

TOOLS BUILT TO LAST

Trick-Tools has the largest selection of hardcore, no-compromise metal fabrication tools and equipment on the planet!

OUR PHILOSOPHY:

We believe that long-lasting, quality tools are not only the best value in the end, but something you can enjoy using that will help you take your fabrication to the next level. The products you see in this catalog are hand picked from top manufacturers around the world. We aren't limited to offering you one tool brand, but choose the best in each category and provide options for the home shop as well as high production manufacturing. Let our Solution Specialists help you determine the best tool for your application. When we help you with a recommendation, we are glad to offer our No Junk Guarantee.

"The bitterness of poor quality is remembered long after the sweetness of low price has faded from memory."

-Aldo Gucci



OUR GUARANTEE:

Here at Trick Tools we believe that our customers deserve lasting value in their tool and equipment purchases. We are constantly searching for high quality, unique and hard to find tools to offer at the best prices possible. Our commitment to you is that we will not offer "cheap junk" anywhere on our website. You, the customer, help us to evaluate our products constantly and as soon as an ongoing quality issue is uncovered we will correct it or discontinue that product immediately. We hope to earn your continued trust.

FAST

SAME DAY SHIPPING

ON IN-STOCK ORDERS BY 3PM (CST)

3-5

ANGLE FINDERS & LEVELS

Digital Levels • Dial Levels • Bend Protractors • Angle Finders • Plane-Of-Bend Indicators •
Torpedo Levels • Digital Protractors • Fractional Calipers



6-9

SAWS

Circular Cold Saws • Portable Metal Cutting Saws • Horizontal Band Saws • Mag Brush •
Mitering Band Saws • Vertical Band Saws • TCT Chop Saws



10-13

GRINDING & SANDING

Belt Grinders • Combination Belt & Disc Grinders • Deburring Machines •
Bench Grinders • Disc Grinders • Knife Making Machines



14-17

WELDING ACCESSORIES

Variable Angle Clamps • Fixed Angle Clamps • Tab and Bracket Holders •
Rotary Welding Positioners • Fixturing Tables • Header Modeling Systems



18-23

METAL SHAPING

English Wheels • Planishing Hammers • Tapered and Straight T-Dollies •
Shrinker/Stretchers • Mallets and Shot Bags • Educational Books and Videos



24-27

BRAKES & SHEARS

Throatless Shears • Straight Brakes • Box & Pan Brakes • Hand Notcher •
Kick Shears • Slip Rolls • Manual & Hydraulic Shears



28-32

IRON WORKERS & PRESSES

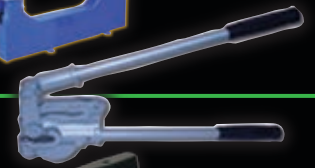
Ironworkers • H-Frame Presses • Press Brakes • Louver Press •
Bench Presses • Dimple Dies • Punch & Flare Tools



33-35

PUNCHING & DRILLING

Sheet Metal Cutters • Drilling Jigs • Hand Punches • Bench Punches •
Mag Drills • Drill Presses • Annular Cutters • Flowdrill



36-39

BEAD FORM TOOLS

Bead Form • Bead Rollers • Rotary Machines •
Portable Expanders • Tubing Swager



40-43

TUBE NOTCHERS

Abrasive Notching Machines • Hole Saws • End Mill Notchers •
Hole Saw Notchers • Pipe Notchers • PipeMasters



44-52

TUBE BENDERS

Design & Layout Software • Rotary Draw Benders • Mandrel Bending Machines •
Hand Bending Machine • Roll Bending Machines • Exhaust Benders



53-54

CNC PLASMA SYSTEMS

Plasma Tube Cutter • CNC Plasma Tables



Terms: We ship UPS and accept Visa, Mastercard, American Express, Discover, and PayPal. Shipments via common carrier must be prepaid and will be FOB point of origin. No returns without prior approval. No returns after 30 days. Products must be in original package in new/unused condition. Returns must be shipped prepaid. A 15% restocking fee will be applied. Any claims for damage or loss must be filed with carrier by purchaser. Prices and specifications subject to change.

Lease Terms: Posted lease prices are based off of the products pricing at the time of printing and a customers best possible credit score. All posted lease pricing is subject to change and is not a guaranteed price. See website for online application and 30 second approval.

WIXEY

DIGITAL ANGLE GAUGE

- Perfect for finding true bevel angles on a saw, track rotation of a tube when tube bending
- Gauge can be "zeroed" at any point
- Features a strong magnetic base
- Accurate to .1 degrees
- Uses single AAA battery
- Backlit display
- Optional base attaches to round tubing or pipe that is 3/4 inch through 2 inch OD



WR300 Digital Angle Gauge Type 2	\$29.99
Digital Angle Gauge and Tube Rotation Bracket Combo.	\$89.98
Tube Rotation Bracket Only (attaches to 3/4"-2" round tube).	\$59.99

ANGLE LEVEL II DIAL LEVEL



- Critical for projects demanding accurate angle measurements
- Angle Level settles smoothly to the angle due to its oil damped, ball bearing movement
- Features a strong magnetic base allowing hands free use on ferrous materials
- Accurate up to 1/10 degree

Angle Level 2 (1/10°) (3.6" x 3.1" includes case)	\$59.95
Angle Level 3 (1/20°) (5.5" x 5", die cast housing w/ carrying case) ...	\$169.95

TUBE ROTATION GAUGE

- Useful in bending and notching to track tube rotation
- Accurate up to 1/10 degree
- The powder coated steel base clamps securely on round tubes
- Great for chassis or exhaust work

ALB Angle Level Base (up to 2" tube)	\$34.95
ALB4 Angle Level Base (1-1/2" - 4" tube)	\$44.95
ALB Combo (Includes Angle Level 2 & ALB) Save \$15!	\$79.90
ALB Combo 4 (Angle Level 2 w/ ALB4 Base for up to 4" OD) Save \$15!	\$89.90

ALB Combo



HUTH

ROTATION GAUGE

- Perfect for large diameter tube bending applications such as exhaust, turbo, and cold air intake systems
- Accurate up to 1 degree
- Features a 0-360 degree range and has a capacity of 1-3/4 - 3 inch OD

996 Clockwise Rotation (Huth bend cards)	\$214.50
976 CC Counter-Clockwise Rotation (Non-Huth bend cards)	\$214.50

WIXEY

DIGITAL CALIPERS

- Displays measurements in inches with fractions or millimeters
- Displays both decimal inches and fractions at the same time
- Constructed of high quality hardened and ground stainless steel components
- Includes carrying case, instruction manual, and additional battery



WR100 Digital Calipers w/ Fractional Readout	\$39.99
--	---------

TOLL FREE ORDER LINE 1-877-826-7268 OR 641-628-3860

DIGI-PAS

DIGITAL LEVEL

- Dual axis color digital display gives high resolution (.01 degrees) measurements of X and Y axis
- The unique design offers v-grooves on the bottom and rear surfaces for working on flat and round surfaces
- Excellent tool for leveling and aligning precision welding tables, fixturing, milling machines, surface grinding, etc.
- Software is available to monitor and record leveling for multiple projects



Digi-Pas DWL-2000XY (module only) \$399.00

DWL-2000XY Software (software only) . . . \$140.00

SMART TOOL

DIGITAL LEVEL



- Accurate to .1 degrees
- Displays degrees, slope %, and pitch (in/ft) with arrows to show the direction to move towards level
- Gauge can be "zeroed" at any point
- Display inverts when the tool is moved beyond 90 degrees
- Battery (9 volt) lasts about 400 hours of use

Digital Smart Tool (module only) **SALE!** \$114.95

CHECKPOINT

TORPEDO LEVELS

- Designed for portability, efficiency, and professional durability
- Made from anodized billet aluminum
- Features multiple precision vials for horizontal, vertical and other varying degrees of measurement
- Incorporates rare earth magnets on flat bottom surface for a secure hold



303



300



327

303 Ultra Mini Mag **SALE!** \$29.99

300 Ultra Mag **SALE!** \$34.99

327 Laser Level **SALE!** \$89.99

WIXEY

DIGITAL PROTRACTOR



WR410

- Range: +/- 180 degrees
- Resolution: 0.1 degrees
- Accuracy: +/- 0.1 degrees
- Auto shutoff for extended battery life
- Legs are 2 inches wide
- Built-in magnets on the edge of the legs
- Legs can be tightened for holding measurement

WR410 Digital Protractor (9" long legs) \$64.99

WR418 Digital Protractor (18" long legs) \$74.99

CKK CREATOR

ANGLE FINDERS

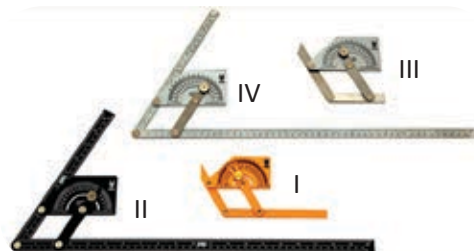
- Find any inside or outside angle between 10 to 360 degrees. Choose from four different models.

Angle Finder I (plastic 6") \$9.95

Angle Finder II (aluminum 20") \$39.95

Angle Finder III (stainless 4") \$59.95

Angle Finder IV (stainless 20") \$79.95



MITTLER BROS.

BEND PROTRACTORS

- These high quality bend protractors will help you duplicate bends that are found in existing parts.
- Easy to set for any degree of bend from 0° to 90°
- Can be used as a bend template or degree indicator
- Inner scale shows degree of bend
- Outer scale shows length of tube consumed in a bend
- Precision CNC engraving
- Anodized aluminum construction



4" Centerline Radius Protractor	\$105.00	7" Centerline Radius Protractor	\$135.00
5" Centerline Radius Protractor	\$115.00	8" Centerline Radius Protractor	\$145.00
6" Centerline Radius Protractor	\$125.00	Complete Set of all five Protractors 4" through 8"	\$525.00

PROLINE

RADIUS CHECK GAUGE

- This robust billet aluminum radius gauge by Proline is a valuable addition to any metal shaper's tool box.
- Great for duplicating contours and assuring consistency in radiused sheet metal parts.
- Provisions for 0, .75, 1, 1.25, 1.5, 2, 3, 4, 6, 12, 24, and 36 inch radii
- Invaluable in choosing the proper hammer, dolly, anvil wheel or planishing die to match your part.
- CNC machined aluminum with durable red anodized finish



Proline Radius Check Gauge	\$36.50
----------------------------------	---------

ARC-MASTER

RADIUS GAUGES



- Proven to speed up complicated calculations and fabrication of bent materials
- Used in applications such as handrails, spiral staircases, aircraft parts, and much more
- Kit includes two versions of the tool to accurately measure inside and outside radius of a piece
- Invaluable companion to any tube bender or slip roll



ArcMaster Large Radius Kit (6" - 144" Range)	\$229.99
ArcMaster Small Radius Kit (2.5" - 30" Range)	\$129.99

TRICK-TOOLS

TUBE BENDER SURVIVAL KIT

- Digital Angle Gauge and Bracket:** Helpful to track rotation of tubing
- AF2:** Use this angle finder to check degree of bend
- TC1:** Tube welding positioner to secure tubes during welding
- Paste Lube:** Use this to save wear on your bender tooling
- Options:** Bend Tech Layout software to assist with part manufacturing

Tube Bender Survival Kit	\$169.95
Tube Bender Survival Kit w/ BT EZ	\$219.95
Tube Bender Survival Kit w/ BT EZ-3D	\$299.95
Tube Bender Survival Kit w/ BT Pro	\$425.95



DAKE

CIRCULAR COLD SAWS

Finance as low as
\$64.00 / Month

- Head rotates 45 degrees right and left of center for miter cutting and 350 model rotates to 90 degrees for slotting.
- Oversized spindle and gear assembly with steel spindle and bronze gear
- Additional ball bearing support of hardened and ground spindle shaft to prevent failure.
- Cam activated vise with gib adjustment and anti-burr arm
- Reliable mechanical coolant pump with flow control adjustment
- 315 & 350 models feature 24v control circuit, E-stop switch, low voltage and thermal protection, optional pneumatic vise.
- 350 model features an adjustable safety clutch to eliminate blade breakage.
- All the Dake saws come with a pedestal, blade, tool kit, coolant, adjustable stop, and service manual.
- 1 year manufacturer's warranty

Cut 250



Scan for Video

Cut 250	10" blade	1.2hp/110v	44 rpm	SALE! \$2,337.50
Super Cut 315	12.5" blade	2.5hp, 110v 1ph	44 rpm	SALE! \$4,037.50
		2.5hp, 220v 3ph	22/44 rpm	SALE! \$4,037.50
Super Technics 350	14" blade	3.5hp, 220/440v 3ph	22/44 rpm	SALE! \$5,461.25

Capacity	Round Solid		Round Tube		Square Tube		Rectangle Tube	
Angle	90°	45°	90°	45°	90°	45°	90°	45°
Cut 250	1-1/4"	1"	2-3/4"	2-3/8"	2-1/2"	2-1/8"	3-7/8" x 1-3/4"	2-1/2" x 1-7/8"
Super Cut 315	2-1/8"	1-3/4"	3-5/8"	3-1/2"	3-1/4"	3-1/8"	4-1/4" x 2-3/4"	3-1/4" x 2-3/4"
Super Technics 350	3-3/8"	3"	4-3/4"	4"	4-1/8"	3-3/8"	6-1/4" x 3-1/2"	3-3/8" x 2-3/4"

SCOTCHMAN

CIRCULAR COLD SAWS

Finance as low as
\$148.00 / Month

- Scotchman Cold Saws provide clean, straight, burr-free cuts, easy miter cuts, and safe operation without sparks or heat.
- Head rotates 45 degrees right and left for miter cutting.
- Slotting operations can be performed with a head that will rotate up to 90 degrees.
- Miter locking pins at 45 degrees left and right provide fast angle selection.
- 7 gallon coolant tank with pump
- Emergency stop button is equipped for operator safety.
- These rugged machines are made to last with hardened and ground bronze gears to provide years of trouble-free service.
- PKPD Series features an air-operated clamp for material vise.
- PKPD Series utilizes a pneumatic power down feed with electric controls.
- PKPD Series uses separate feed controls for rate and pressure.
- 3 year manufacturer's warranty



Model	Blade Size	Motor	RPM	Price
CPO 275 CPO 275 PKPD (Semi-Auto)	11"	2.0hp, 220/440v 3ph 1.5hp, 220/440v 3ph	60	CPO 275: \$5,395.00 CPO 275 PKPD: \$8,695.00
CPO 350 CPO 350 PKPD (Semi-Auto)	14"	2.5hp, 220/440v 3ph 3.0hp, 220/440v 3ph 5.0hp, 220/440v 3ph	44	CPO 350: \$6,195.00 CPO 350 PKPD: \$9,395.00

Capacity	Round Solid		Round Tube		Square Tube		Rectangle Tube	
Angle	90°	45°	90°	45°	90°	45°	90°	45°
CPO 275	1-1/2"	1"	3-3/8"	2-3/4"	3"	2-5/8"	3-1/2" x 2-3/8"	2-5/8" x 2-5/8"
CPO 350	2"	1-3/4"	4-7/8"	4-3/8"	4-1/2"	4"	5-1/2" x 4"	4" x 4"
CPO 275 PKPD	1-1/2"	1"	3-3/8"	2-3/4"	3"	2-5/8"	3-1/2" x 2-3/8"	2-5/8" x 2-5/8"
CPO 350 PKPD	2"	1-3/4"	4-7/8"	4-3/8"	4-1/2"	4"	5-1/2" x 4"	4" x 4"

FOLLOW US ON SOCIAL MEDIA:



Saws

HYDMECH

PORTABLE COLD SAW

- This lightweight bench top cold saw can be easily moved around the shop or taken to the job site.
- Cuts small solids, tubing, and structural shapes
- Head rotates 45 degrees for miter cutting
- Flood coolant and pump
- Standard blade included

Capacity	Round	Square
90°	2-1/2"	2-1/4"
45° Left	2"	1-3/4"

Model Number:	P225
Motor:	1 hp, 110v
Blade Speed (rpm):	50
Blade Size (mm):	225 x 32 x 2
Maximum Blade Size:	9"
Vise Opening Max:	2-3/4"
Weight (lbs.)	83
Price:	\$990.00



FEIN

TCT CHOP SAW

- The Fein Slugger 14 inch Tungsten Carbide Tip blade cuts metal faster and safer than abrasives.
- Very little heat is created during the sawing process and many of the chips created are captured within the tray contained inside the base.
- Will cut stainless, aluminum, steel and more.
- Power is supplied by a 2.4hp, 1,800 watt motor that is low speed, with high torque.
- Durable construction with cast aluminum base means this saw will last under strenuous conditions.

Blade Size	14"
Blade Speed (rpm):	1300
Arbor Size	1"
Mitering Range	45 degrees
Dimensions (H W D)	22" x 22" x 12-3/4"

MCCS14



Scan for Video

MCCS14 14" Chop Saw\$499.95
 MCSL09 14" Chop Saw Blades Starting at \$120.00

FEIN

TCT CIRCULAR SAWS



MCSL09

- The Fein Slugger Metal Cutting Saws cut through almost any type of material effortlessly.
- Lightweight, only 14 or 20 lbs, depending on model
- Cutting depth from 2 or 3-1/4 inches, depending on model
- Overload switch

- Spindle lock for fast easy blade changes
- 45 degree beveling ability increases saws capability and gives the slugger a clear advantage over the competition.
- Laser guide on MCSL09
- High quality construction

MCCS7-1/4 Slugger TCT Circular Saw (110v, 7-1/4" blade included) **SALE!**\$229.95
 MCSL09 TCT Circular Saw (110v, 9" blade included) **SALE!**\$299.95



Scan for Video

FEIN

MAG BRUSH

- Helps pick up filings and chips by the use of a powerful magnet.
- Simply pull the plunger out to release over a bin or waste basket
- Saves time and money in cleanup
- So handy you'll want one by all your machines

Mag Brush (15" length) \$39.95
 Super Mag Brush (36" length) \$79.95



HEM SAW

PORTABLE BAND SAW

- Perfect for the hobbyist needing a lightweight portable saw with large cutting capacity.
- Two speed control aids cutting both ferrous and non-ferrous metals.
- 45 degree swiveling miter head makes miter cuts a breeze.
- Features a powerful 1hp, 110v motor
- Adjustable front band guide
- Optional table for vertical use



782XL Portable Band Saw **SALE!** \$499.00
Vertical Work Table \$134.00



HEM SAW

MITERING HEAD BAND SAW



NG120XL



Finance as low as
\$35.00 / Month

- Perfect for the hobbyist needing a lightweight portable saw with large cutting capacity.
- Variable speed control aids cutting both ferrous and non-ferrous metals.
- Cast construction allows for years of use.
- Reverse blade rotation results in up to 60% faster cuts than similar saws of this size.
- ABS models feature a unique gravity down feed system that allows for hands free cutting.

Model	Capacity	Blade Size	Speeds (fpm)	Motor	Mitering	Weight	Price
NG120XL	4-3/4" Round	56-3/4" x 1/2"	115-260	1.7 hp 110v	60°	39 lbs.	\$1,293.00
NG160	6" Round	68-3/4" x 1/2"	115-260	2.7 hp 110v	45°	77 lbs.	\$1,915.00
NG120ABS	4-3/4" Round	56-3/4" x 1/4"	98.5-262.5	1.7 hp 110v	60°	39 lbs.	\$1,479.00
NG160ABS	6" Round	68-1/4" x 1/4"	98.5-262.5	2.7 hp, 110v	45°	77 lbs.	\$1,915.00

HEM SAW

MITERING HEAD BAND SAW

- This mitering head band saw is excellent for the industrial user needing accurate cuts and large capacity (6-1/4 inch capacity).
- The heavy duty cast iron and steel construction equates to a very durable cutting platform.
- Coolant system keeps blade and material cool during the cutting process.
- Head rotates up to 60 degrees for almost any miter cut.
- An adjustable length stop is included for repeatable cuts.

Femi N215XL (220v 1ph) \$3,776.00



Finance as low as
\$104.00 / Month

DAKE

HORIZONTAL BAND SAWS

- Features a heavy cast bed and housing for accurate and vibration free cuts.
- Low voltage controls, auto shut off and overload protection provide operator safety and machine longevity
- Hydraulic control for downfeed with locking valve
- Re-circulating coolant system
- Rugged gear box with bronze and steel gears
- Saws are covered by Dake's standard 1 year warranty

Model	Capacity	Blade Size	Speeds (fpm)	Motor	Dimensions	Weight
SE712	7" Round	93" x 3/4"	85/130/180/235	3/4 hp 110v	56 x 21 x 39	350 lbs.
SE912	9" Round	103.5" x 1"	98/164/246/328	1 hp 110v	56 x 21 x 41	520 lbs.

SE 712



Finance as low as
\$48.00 / Month

Dake SE 712 Band Saw \$1,750.00
Dake SE 912 Band Saw Starting at \$2,750.00

DAKE MITERING BAND SAW



TRAD 301

- Mitering head band saws rotate up to 60 degrees for almost any miter cut.
- Each machine is equipped with a direct drive system for power and reliability.
- Low voltage controls meet CE standards
- End of cut and blade breakage shut off
- Saws are covered by Dake's standard 1 year warranty

Model	Capacity	Blade Size	Speeds (fpm)	Motor
ZIP22	7" Round	82" x 3/4"	197	1 hp 110v
ZIP29	9.75" Round	96.5" x 1"	105/210	1.5 hp, 220v, 3 ph
TRAD301	10" Round	108.25" x 1"	108/216	2 hp, 220v, 3 ph

Dake ZIP 22 Mitering Band Saw	\$3,250.00
Dake ZIP 29 Mitering Band Saw	\$5,595.00
Dake TRAD 301 Mitering Band Saw	\$9,950.00

ELLIS DUAL MITERING BAND SAW

\$ Finance as low as \$79.00 / Month

- Ellis Saws feature dual mitering capabilities, extremely large cutting capacity, and rugged durability.
- Head miters up to 50 degrees, both left and right, using the built-in protractor.
- Hydraulic control featuring a locking valve controls head feed rate.
- Quick acting vise makes clamping and unclamping quick and easy.



Ellis 1600 SALE!	\$2,895.00
Ellis 1800 SALE!	\$3,495.00
Ellis 2000	\$4,595.00
Ellis 3000	\$4,995.00
Ellis 4000	\$5,995.00

Model	Capacity (90°)	Capacity (45°)	Blade Size	Speeds (fpm)	Motor	Dimensions	Weight
1600	10" round, 11" flat	6.875" round, 7.25" flat	120" x 1"	70/135/250	1 hp 110v	59 x 24 x 47	481 lbs.
1800	11" round, 14" flat	9" round, 9" flat	132" x 1"	70/135/250	1 hp 110v	66 x 29 x 47	640 lbs.
2000	11" round, 11" flat	11" round, 9" flat	144" x 1"	70/135/240	1.5 hp 220v	72 x 34 x 47	800 lbs.
3000	13.5" round, 13" flat	12" round, 10" flat	162" x 1"	80/135/220	2 hp 220v	81 x 394 x 50	1000 lbs.
4000	13.5" round, 13" flat	13.5" round, 13" flat	180" x 1.25"	75/135/195	2 hp 220v	81 x 394 x 50	1000 lbs.

DAKE VERTICAL BAND SAWS



\$ Finance as low as \$179.00 / Month

F-16

- Saws are available up to 41 inch capacity, large enough for any job at any budget.
- Options like blade welders, power feed, and tilt tables are available
- The 14-10 and Trademaster are built in the U.S.A.
- F-16 is assembled in U.S.A.
- Saws are covered by Dake's standard 1 year warranty

Model	Blade Width	Speeds (fpm)	Motor	Throat Cap.	Work Height	Weight
14-10	1/4" - 1/2"	70/140/270/540	1 hp	14"	10"	625 lbs.
F-16	1/8" - 5/8"	60 - 590	1.5 hp	16"	11"	975 lbs.
Trademaster	1/4" - 1"	50 - 500	1.5 hp	19.5"	12"	1,150 lbs.



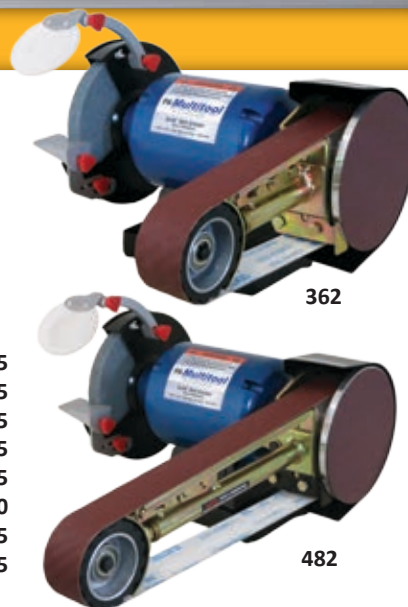
14-10 – tilt table, 4 speeds, high performance at a low price (110/220v 1 ph or 220/440v 3 ph) \$4,995.00
 F-16 – fixed table, variable speed, digital tach, large capacity (220v 1 ph or 3 ph) \$6,495.00
 Trademaster – power feed tilt table with 11" travel, variable speed, work lamp (220/440 3 ph). . . . \$9,425.00

MULTITOOL

BELT GRINDERS

- Available as motorized unit or attachment only to upgrade your existing grinder
- Removes material up to five times faster than with the equivalent grit grinding wheel.
- Multitool features 5 grinding positions: contact wheel, flat platten, slack belt, disc and grinding wheel.
- Belts change in seconds from grinding to sand deburr or polish
- Belt grinder attachments are all available with motor options
- Backed by a 1-year warranty

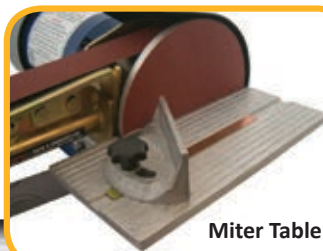
MT362 Multitool Grinder Attachment (2" x 36" belt)	\$219.95
MT362-8 Multitool Grinder (2" x 36" belt, w/ 1 hp grinder)	\$449.95
MT482 Multitool Grinder Attachment (2" x 48" belt)	\$289.95
MT482-8 Multitool Grinder (2" x 48" belt, w/ 1 hp grinder)	\$519.95
MT484 Multitool Grinder Attachment (4" x 48" belt)	\$329.95
90 Degree Tilting Floor Pedestal (includes work rest)	\$149.90
Wall Mount Grinder Pedestal	\$89.95
Disc Grinder Miter Attachment SALE!	\$49.95



Wall Mount Pedestal



Miter Table



Floor Pedestal



Scan for Video

MULTITOOL

DELUXE KIT



- This Kit offers the same performance that Multitool is known for, but offers even more versatility
- Multitool features 5 grinding positions: contact wheel, flat platten, slack belt, disc and grinding wheel
- Deluxe kit includes a 90 degree tilting floor pedestal and horizontal work table
- Backed by a 1-year warranty

Multitool 2" x 36" Belt Grinder Deluxe Kit (includes grinder, pedestal, and work rest)	\$599.95
Multitool 2" x 48" Belt Grinder Deluxe Kit (includes grinder, pedestal, and work rest)	\$669.95



NOTCHHEAD

POLISHING GRIP

- The NotchHead Polishing Grip will grip almost any type of bolt or screw from No. 4 through No. 10 screws and 1/4 inch through 3/8 inch bolts.
- Also great for holding countersinks, small files and more around the shop.
- Never handle a hot bolt again
- Aluminum construction



NotchHead Grip (includes: two collets to cover no. 4 screws through 3/8" bolts)	\$99.95
1/2" Collet for NotchHead Grip	\$34.95



QUALITY TOOLS BACKED BY OUR NO JUNK GUARANTEE

RADIUSMASTER BELT GRINDER



\$ Finance as low as
\$71.00 / Month

- Offers a higher level of performance and convenience, plus greater versatility and durability than any general purpose machine.
- Choose from 7 grinding surfaces including 5 radius wheels, slack belt and platen grinding.
- Tilts on the side to be used as a bobbin grinder, also great for pipe notching.
- Fully sealed bearings
- Belt size: 48 x 2 inch
- 1.5 hp, 110v (overload protected)
- Belt speed: 3,600 feet per minute
- Operator lock-out switch
- 1 year manufacturer's warranty



Scan for Video

RadiusMaster (includes 5 belts & pedestal) **\$2,595.00**
Drive Wheel Tool Rest for RadiusMaster **\$295.95**
Hollow Grinding Jig for RadiusMaster **\$395.95**



HARDCORE 6"x60" BELT GRINDER

\$ Finance as low as
\$75.00 / Month

- Hardcore Belt Grinders are precision machines designed and balanced for vibration free operation.
- Micro adjustments for belt tensioning and tracking control are made quickly and easily.
- This premium unit utilizes a billet aluminum construction.
- 1.5 hp motor, 2,500 RPM
- Variable Speed Motor
- Dimensions (LxWxH): 21"x 22"x 30"
- Belt Dimensions: 6 x 60 inch
- Quick belt change & tracking

Hardcore BGA-6 Belt Grinder (110V/220v 1ph) **\$2,750.00**



\$ Finance as low as
\$48.00 / Month

HARDCORE 2"x72" BELT GRINDER

- Hardcore grinders are popular machines among race car fabricators and knife makers.
- Balanced for vibration free operations
- All adjustments are quick and easy with micro adjustments for belt tensioning and tracking.
- 2 x 72 inch belt
- 8 inch contact wheel
- Billet aluminum construction
- Variable speed option
- 1.5 hp motor

Hardcore DG-12 Disc Grinder (110/220v 1ph, add \$804 for variable speed) **\$1,745.00**

HARDCORE DISC GRINDER

\$ Finance as low as
\$71.00 / Month

- Hardcore Disc Grinders are precision machines designed with aerospace tolerances.
- Balanced for vibration free operations
- Removable work rest adjusts from 45 to 90 degrees
- 1.5 hp motor, 1735 RPM
- Variable Speed Motor
- 12 inch Disc
- Billet aluminum construction

Hardcore DG-12 Disc Grinder **\$2,599.00**



BURR KING

X400 BELT GRINDER

Finance as low as
\$40.00 / Month



X400

- The Burr King X400 features a 2 x 48 inch belt, US made 1 hp motor, heavy cast construction, and all of the precision and smooth running qualities Burr King grinders are known for.
- The design of this grinder allows for grinding at multiple points: contact wheel, slack belt, and platen grinding.
- Precision machined components
- Belt changes are made quickly and easily
- Belt Speed: 8,000 feet per minute
- Perfect angles can be achieved thanks to the included adjustable work rest.
- 1 year manufacturer's warranty
- Made in the U.S.A.

X400-BK Belt Grinder (2" x 48" belt, 1hp, 110v) SALE! \$1,484.85
X400-BK Belt Grinder Deluxe Kit (includes: belt grinder, floor pedestal, and 10 piece belt kit) SALE! \$1,914.19



BURR KING

BELT GRINDERS

482



Finance as low as
\$51.00 / Month

- These popular 3-wheel grinders feature slack contour belt grinding as well as contact wheel and work rest grinding.
- Standard units are wired for 110v, also available in 220v power.
- Precision machined components
- Smooth and powerful operation
- Quick belt change & tracking
- Best quality and widest range of options available
- 1 year manufacturer's warranty
- Made in the U.S.A.

482 Belt Grinder (2" x 48" belt) SALE! Starting at: \$1,859.15
760 Belt Grinder (1-1/2" x 60" belt, 110v) SALE! Starting at: \$2,228.70

BURR KING

BELT GRINDERS

Finance as low as
\$87.00 / Month



- These popular 2-wheel grinders feature slack belt grinding as well as contact wheel and work rest grinding in a frame design that pivots to ideal work positions.
- Up to 8,000 SFPM belt speed standard
- Precision machined components
- Available in variable speed and aggressive single speed, along with two different belt widths.
- Smooth and powerful operation
- 1 year manufacturer's warranty
- Made in the U.S.A.

960-250 Belt Grinder (2-1/2" x 60" belt) SALE! Starting at: \$3,182.50
960-400 Belt Grinder (4" x 60" belt) SALE! Starting at: \$3,243.10

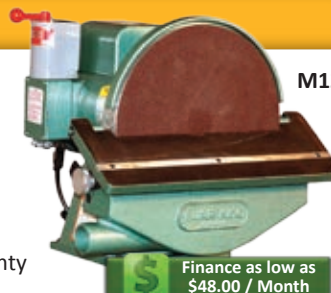
BURR KING

DISC GRINDERS

Finance as low as
\$48.00 / Month



- All Burr King disc grinding machines are constructed using a rugged cast aluminum.
- Burr King disc grinders also feature a cast iron table, precision aluminum discs, and a forward and reverse switch.
- Table tilts 30 degrees in, and up to 45 degrees out
- Table Size: 6 x 17 inch
- Disc Speed RPM: 1,725
- 1 year manufacturer's warranty
- Made in the U.S.A.



M12

Finance as low as
\$48.00 / Month

M12 12" Disc Grinder SALE! \$1,765.10
M12 12" Disc Grinder Variable Speed (170-1,725 RPM) SALE! \$2,837.65
M20 20" Disc Grinder SALE! \$7,281.75
M20VB 20" Disc Grinder Variable Speed (170-1,725 RPM) SALE! \$9,945.55

BURR KING

VIBRATORY BOWLS

3 quart

10 quart

20 quart



- Vibratory Bowls provide an efficient and effortless way to descale, clean, polish, and remove rust from metal parts.
- Vibra King machines feature small to large capacities ranging from benchtop bowls to floor standing chamber units.
- Media kits of many kinds are available for the proper treatment.

3 quart Benchtop Vibratory Bowl	\$421.00
10 quart Benchtop Vibratory Bowl	\$826.00
20 quart Benchtop Vibratory bowl	\$998.00

BURR KING

VIBRA KING CHAMBER

- Vibra King vibratory chambers deliver quiet, high performance deburring, polishing, descaling, and surface conditioning.
- Their heavy duty construction and large size make them ideal for medium to large parts and production runs.
- Can be used in wet or dry processing applications with a variety of materials.

2.5 cubic foot Vibra King Chamber	\$5,662.00
4.5 cubic foot Vibra King Chamber	\$6,500.00
8.5 cubic foot Vibra King Chamber	\$12,041.00



Finance as low as
\$156.00 / Month



3M

AIR BELT FILE



- 3M belt file uses 3M Abrasive Belts for a variety of metalworking applications.
- Popular for use in collision repair for grinding through spot welds in high strength steel.
- Uses belt widths from 1/8 inch up to 3/4 inch and 18-24 inch lengths with optional arms.

3M Abrasive File Belt Sander **SALE!** \$462.99



FEIN

ELECTRIC BELT FILE

- Fein belt file is designed for maximum material removal and constant speed under heavy load.
- Features a variable speed control
- Grinding arm rotates 180 degrees and can be changed out easily with optional arms
- Belts from 3/32 up to 3/4 inch widths are available in a variety of grits.
- **Motor:** 550 Watt Output; **RPM:** 10,000-28,000
- Belt Length: 20-1/2 inch
- Belt Speed 105 ft/sec

Fein BF 10-280E Electric Belt File **SALE!** \$619.65



Finance as low as
\$36.00 / Month

FEIN

PIPE POLISHERS

- Works with all types of ferrous and non-ferrous metals
- Perfect tool to remove weld seams, sand scratches, and polish to a satin or mirror finish.
- Popular in the stainless handrail industry
- Quick belt change & tracking adjustments
- **Motor:** 750 Watt Output
- **RPM:** 2,700-7,000
- Belt width: 1-9/16 inch and 13/16 inch
- Belt Speed 72 ft/sec

RS 10-70E Pipe Polisher Kit SALE	\$1,322.32
RS 12-70E Professional Pipe Polisher Kit (shown) SALE	\$1,737.75

TOLL FREE ORDER LINE 1-877-826-7268 OR 641-628-3860

STRONGHAND MAGNETIC POSITIONERS

MAV120



- Positioning magnets are the perfect accessory for any fabricator.
- These tools feature an on/off switch to make repositioning a breeze.

MAV120 Adjust-O Angle Magnet \$246.75
 MS2-80 6" Dual Switch Magnet (78 lbs. of force) \$120.75
 MS2-90 8" Dual Switch Magnet (150 lbs. of force) \$207.90

MS2-80



TRICK-TOOLS WELDER'S SURVIVAL KIT

This kit features an assortment of our best selling and most useful welding clamps and magnets! Included in this 9 piece kit, you'll find a variety of tools to help you out, no matter what you're welding.

- | | |
|-----------------------------|-------------------------------------|
| (1) Shark Clamp | (1) Multi-Purpose Pliers |
| (1) Corner Magnet Twin Pack | (1) Standard Positioning Magnets |
| (2) Tab and Bracket Holders | (1) Multi Purpose Pliers w/ V- Pads |
| (1) Adjust-O Magnet Square | (1) Clip on V-Pad |

WSK Welder's Survival Kit **SALE** \$164.95



TRICK-TOOLS TUBE WELDING POSITIONERS

TC1



- This tube welding positioner is a great tool for race car builders and tube fabricators
- Can be adjusted to any angle and securely hold parts for tack welding without magnetizing
- This simple tool can save hours of frustration when working with coped tubes.

TC1 Tube Welding Positioner (1"-2" OD) \$38.95
 TC1 Tube Welding Positioner **Buy two and save!!** \$69.90
 TC2 Tube Welding Positioner (2"-3" OD) \$45.95
 TC90 90° Fixed Tube Welding Positioner (1"-2" OD) \$26.00
 TCKit Tube Welding Positioner Kit (Set of 4 includes 2-TC1s, 1-TC90, and 1-TBH) \$119.95

STRONGHAND GROUND MAGNET

- PowerBase Ground Magnet is the perfect solution to slipping or hard to use ground clamps
- Rated up to 500 amps with a holding force of up to 110 lbs
- V-groove base works with flat and round surfaces

Welding Ground Magnet \$92.40

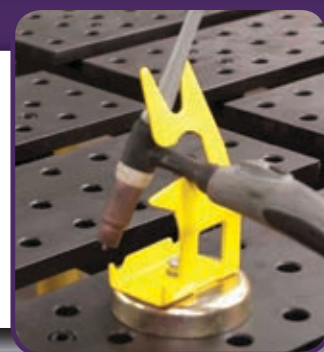


STRONGHAND TORCH HOLDER



- MIG and TIG gun holders provide a great place to hang your welding torch, as well as a place to put nozzle gel.
- Magnetic base allows you to place the holder anywhere on the table.

MRT15 TIG Torch Holder \$20.95
 MRM12 MIG Torch Holder \$27.83
 MRM13 MIG Torch Holder (with Pliers) \$38.33



FOLLOW US ON SOCIAL MEDIA:



BESSEY

WELDING CLAMPS

- Bessey high performance all-steel bar clamps deliver patented features, durability and real-world productivity to make it a must-have tool in today's modern workshop.
- The 2400S Series is made in Germany and comes with a MorPad that tilts to 35 degrees and extends clamp life, even at full capacity.
- SLV Series double force clamps prevent tipping through central positioning on the workpiece.
- SLV clamps feature a long service life due to the special heat resistant pressure plate with a sintered steel insert and the MorPad technology.
- These unique clamps can be reconfigured for a huge variety of unusual clamping applications.

MMS Light Duty Bar Clamp (4" and 8" available) **Starting at \$21.22 ea.**

Drop Forged C-Clamp (4", 6", 8", 10" and 12" available) **Starting at \$29.02 ea.**

2400S Sliding Arm Clamp (8" through 24" available) **Starting at \$123.94 ea.**

SLV Double Force Clamp (39", 60" and 79" available) **Starting at \$165.91 ea.**



2400S Series

SLV Series

NOMAD

WELDING TABLE



- This portable welding table is perfect for home fabricators limited on shop space.
- Heavy 14 ga 20 x 30 inch top with 350 lb load capacity
- Three 1.1 inch slots in the tabletop allow for insertion of clamps
- Tabletop tilts to three positions: Horizontal, 30 degree, and folded
- Height adjustable from 26 to 32 inch
- Includes two heavy casters for portability



Scan for Video

Nomad Welding Table **\$156.75**

Nomad Deluxe Kit **SALE** **\$219.95**

(Includes: Nomad Welding Table, (2) UBV45 Magspring Clamps, (1) MS346C Multi-Angle Magnet, (1) MS346A Mini Magnet, (2) XDV4 Adjustable Magnetic V-Pads)

ROTO-STAR

WELDING POSITIONERS

- Roto Star welding positioners are a must for precision welding.
- Can be ordered with a standard 3 jaw chuck with thru-hole and 250 lbs of capacity, or a surface plate for fixturing work pieces.
- Adjustable from 0 to 90 degrees in 15 degree increments
- Features a 300 amp double grounding system which eliminates feedback during high frequency welding.
- Reversible variable speed control unit and foot pedal for hands free operation

Roto1 (w/ 6" chuck) (add \$400 for variable spd pedal) **\$2,195.00**

Roto1-P (w/ 12" surface plate) (add \$400 for variable spd pedal) **\$1,795.00**

Roto3 (w/ 8" chuck) (add \$400 for variable spd pedal) **\$2,795.00**

Roto3-P (w/ 16" surface plate) (add \$400 for variable spd pedal) **\$2,395.00**

Finance as low as
\$49.00 / Month

Roto1-P



Specifications	Roto Star 1	Roto Star 3
Chuck	6" 3 Jaw	8" 3 Jaw
Max. Swing @ 0	16"	20"
Vertical Weight Cap	200 lbs.	250 lbs.
Horizontal Weight Cap	100 lbs.	150 lbs.
Thru Spindle Cap	1-1/2"	2-1/2"
Spindle Rotation	360°	360°
Spindle Speed	0-15 rpm	0-13 rpm
Voltage	110 or 200v	110 or 200v
Optional Table	12" dia	16" dia

BUILDPRO

FIXTURING TABLES

- The most adaptable welding and fixturing system on the market.
- Features a modular design that allows the precision ground and CNC machined top plates to be reconfigured to extend the width of the table for larger projects.
- Table is easy to set-up and tear down, saving valuable work space.

- Heavy duty leveling feet
- 1-3/4" spacing between plates
- Table flatness of .004 inch/ft
- Hole diameters of .625 inches
- Hole spacing of 2.00 inches
- Plate thickness of .625 inches



Finance as low as
\$91.00 / Month

47" x 38" Standard Table (add \$525 for Nitrided Table)	\$2,205.00
47" x 46" Standard Table (add \$470 for Nitrided Table)	\$2,730.00
78" x 38" Standard Table (add \$1,000 for Nitrided Table)	\$3,300.00
78" x 46" Standard Table (add \$1,010 for Nitrided Table)	\$3,990.00
94" x 46" Standard Table (add \$750 for Nitrided Table)	\$4,550.00

BUILDPRO MAX TABLES

- MAX tables feature a continuous plate tabletop surface with 33% more machined holes than the standard slotted tables, for a maximized work surface.
- Just like the standard BuildPro tables, the MAX series features a modular design, allowing the plates to adapt to your project no matter the size.

- Heavy duty leveling feet
- Continuous plate design
- Table flatness of .004 inch/ft
- Hole diameters of .625 inches
- Hole spacing of 2.00 inches
- Plate thickness of .625 inches

94" x 48" BuildPro MAX Standard Table (add \$900.00 for Nitrided Table) \$4,900.00



Finance as low as
\$135.00 / Month

SIEGMUND

SYSTEM 28

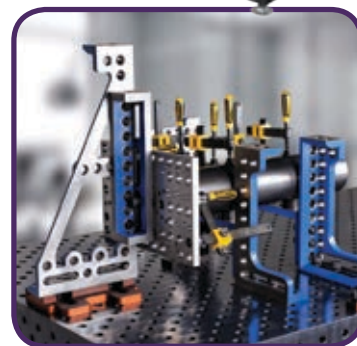
Finance as low as
\$165.00 / Month

- These German constructed tables feature five fixturing surfaces constructed from 1 inch (25mm) thick plate with additional reinforcement underneath the work surface.
- Fixture mounting holes are CNC machined to 28mm diameter, spaced 100mm apart, and have a flatness rating of +/- .0025 inches per foot.
- These tables are constructed from a hardened steel before going through a plasma nitride treatment to achieve a hardness rating of over 750 Vickers (HV) (60.5 Rockwell).
- A wide variety of fixturing components are available.
- See our website for accessory and leg options

47" x 47" System 28 Welding Table	\$5,700.00
78" x 39" System 28 Welding Table	\$6,900.00
94" x 47" System 28 Welding Table	\$8,900.00
78" x 78" System 28 Welding Table	\$12,700.00
118" x 59" System 28 Welding Table	\$12,500.00
157" x 78" System 28 Welding Table	\$19,500.00



System 28 Table



SYSTEM 16

- These German constructed tables feature five fixturing surfaces constructed from 1/2 inch (12mm) thick plate with additional reinforcement underneath the work surface.
- Fixture mounting holes are CNC machined to 16mm diameter, spaced 50mm apart, has a flatness rating of +/- .0025 inches per foot, and a hardness rating of over 750 Vickers (HV).
- See our website for accessory and leg options

47" x 31" System 16 Welding Table	\$2,900.00
47" x 47" System 16 Welding Table	\$3,800.00
78" x 39" System 16 Welding Table	\$5,500.00
95" x 47" System 16 Welding Table	\$7,500.00
118" x 59" System 16 Welding Table	\$9,700.00



System 16 Table

Finance as low as
\$80.00 / Month

ICENGINEWORKS

HEADER MODELING BLOCKS



- Makes modeling custom headers and turbo manifolds easier
- Piece blocks together and rotate to create a model of your custom header
- Just attach the adapter tool to your exhaust flange and start building

1-5/8" Basic Kit (120 pcs)	\$419.99
1-3/4" Basic Kit (135 pcs)	\$419.99
2" Basic Kit (120 pcs)	\$419.99
1-5/8" Pro Kit (240 pcs)	\$774.99
1-3/4" Pro Kit (255 pcs)	\$774.99
2" Pro Kit (240 pcs)	\$799.99

ICENGINEWORKS

TUBE CUTTING JIGS

- Duplicate each section of your plastic blocks in steel tubing with this easy to use jig!
- Aluminum cutting board is designed to be aligned with the fence and slide across the table of a vertical band saw.
- The fabricator can then cut steel tubing that is perfectly perpendicular to the tangent, making an exact replica of the modeling block section.

1-5/8" Cut Tool System	\$599.99
1-3/4" Cut Tool System	\$699.99
1-7/8" Cut Tool System	\$699.99
2" Cut Tool System	\$649.99



ICENGINEWORKS

TACK WELD CLAMPS



- The tack weld clamps from Iccengineworks are perfect for positioning your material segments and eliminating weld and cut adjustments.
- Clamps allow the fabricator to preview and adjust pieces before they are tack welded together.

1-5/8" Exhaust Tack Welding Clamp Set (4 pcs)	\$104.99
1-3/4" Exhaust Tack Welding Clamp Set (4 pcs)	\$104.99
1-7/8" Exhaust Tack Welding Clamp Set (4 pcs)	\$104.99
2" Exhaust Tack Welding Clamp Set (4 pcs)	\$109.99
2-1/2" Exhaust Tack Welding Clamp Set (4 pcs)	\$149.99



ICENGINEWORKS

FULL HEADER SYSTEM

Finance as low as \$38.00 / Month

1-5/8" Pro Full System (includes Pro Modeling Kit, Cut Tool System, Tack Weld Clamp Set)	\$1,399.99
1-3/4" Pro Full System (includes Pro Modeling Kit, Cut Tool System, Tack Weld Clamp Set)	\$1,499.99
2" Pro Full System (includes Pro Modeling Kit, Cut Tool System, Tack Weld Clamp Set)	\$1,499.99

STREET OR STRIP CONCEPT

EXHAUST PURGE PLUG KIT

- Designed specifically for header and turbo manifold manufacturers
- Made from 6061 billet aluminum, they are guaranteed to perform in high heat applications
- Fits 1-1/4 through 1-3/4 OD tubing as well as 1-1/4 and 1-1/2 schedule 40 pipe.
- Barbed fitting not included

Purge Plug Kit \$144.95



EDUCATIONAL BOOKS

- Educational fabricating books from top authors are a great learning aid.
- Books by Tim Remus, Richard Finch, Ron and Sue Fournier, and Bryan Fuller will be referred to over and over again.
- Excellent insight, lots of pictures, and helpful tips will guide you in your journey to be a master metal shaper.



Learning the English Wheel (By William H. Longyard, 144 pages)	\$27.95
Full-bore Welding (By Bryan Fuller and Mark Prosser, 166 pages)	\$24.95
Full-bore Sheet Metal (By Bryan Fuller and Mark Prosser, 143 pages) SALE!	\$24.95
Ultimate Sheet Metal Fabrication (By Tim Remus, 144 pages)	\$24.95
Advanced Sheet Metal Fabrication (By Tim Remus, 144 pages)	\$27.95
Welders Handbook (By Richard Finch, 160 pages)	\$19.95
Metal Fabricator's Handbook (By Ron and Sue Fournier, 175 pages)	\$25.00

EDUCATIONAL VIDEOS



- Ron Covell and Ron Fournier both bring vast knowledge and many years of experience to their viewers.
- Videos cover a variety of topics ranging from gas welding techniques and hammer forming, to the tools required to do the job.

Beading Machine Basics (By Ron Covell, 97 min)	\$40.00
Working with Tubing (By Ron Covell, 95 min)	\$40.00
English Wheel Techniques DVD (By Ron Covell, 86 min)	\$40.00
TIG Welding Basics DVD (By Ron Covell, 70 min)	\$40.00
Advanced TIG Welding DVD (By Ron Covell, 111 min)	\$40.00
Hammerforming Techniques (By Ron Fournier and Ron Covell, 76 min)	\$40.00
Basic Techniques for Working with Steel DVD (By Ron Covell, 100 min)	\$40.00

TRICK-TOOLS CONTOUR GAUGES

- These two styles of contour gauges are the perfect answer for duplicating complicated contours, ensuring the new part is an exact copy of the old.
- The 12 inch sliding pin version helps model complicated shapes
- The 37 inch and 107 inch curve template is great for long panels such as hoods, roof skins, fenders, airplane wings, and more.
- Each saves valuable time on projects and can be used over and over again

12" Contour Gauge with sliding pins	\$79.99
37" Curve Template	\$49.99
107" Curve Template	\$99.99



TRICK-TOOLS BULLSEYE PICKS



- Metal Finishing: Bullseye picks make it easy to accurately repair dents like a professional.
- Return Spring: Allows you to hit quickly, with the advantage of knowing where the pick (or blunt tip) will strike.
- Designed for use in hard-to-reach areas such as around braces, gussets and other blind areas.

15" Reach Bullseye Pick	\$109.95
25" Reach Bullseye Pick	\$119.95



QUALITY TOOLS BACKED BY OUR NO JUNK GUARANTEE

PROLINE METAL SHAPING STATION

- This ProLine metal shaping station is built for the professional metal shaper with the ultimate quality in mind.
- The powder coated base and upright stand are 29 inches tall for a comfortable working height once a tool is installed.
- The deluxe model features a nickel plated tool rack to keep things close at hand as well as an angle adapter for 90 and 45 degree mounting.

Deluxe Shaping Station (includes stand, tool rack, angle adapter, and 3 tooling adapters) \$975.00

ProLine Package Shaping Station SALE! \$1,595.00

(includes stand, tool rack, angle adapter, 3 tooling adapters, barrel mallet, 3 bossing mallets, 12" shot bag and plate, set of tapered T-dollies, radius gauge)



Finance as low as \$44.00 / Month

FOURNIER SLAPPERS



- These slappers are great for forming material over a T-dolly or forming head.
- Their leather face protects the finish of the material and will be useful for a variety of metal shaping applications.

Flat Face Slapper \$49.00

Curved Face Slapper \$49.00

Gentle Face Slapper \$49.00

Slapper Kit (includes three listed above) **SALE!** \$140.00

METALACE MALLET & SHOT BAGS

- These high quality bossing mallets are made from a non-marring plastic and are offered in several sizes so you can select a hammer perfectly suited for the job at hand.
- Our selection of shot bags, or sand bags, is made in the USA using a high quality leather and can be filled with #9 lead shot or silica sand.

Small Bossing Mallet (right) \$36.00

Medium Bossing Mallet (left) \$40.00

Large Bossing Mallet (middle) \$48.00

Bossing Mallet Kit (includes three listed above) **SALE!** \$117.00

6" Round Shot Bag \$20.00

12" Round Shot Bag \$39.00

18" Round Shot Bag \$53.00

18" Rectangle Shot Bag \$65.00



METALACE T-DOLLIES

- Tapered and Straight T-Dollies allow for a variety of custom shapes to be created with consistency.
- Use them by hand, in a vice, or in a metal shaping station and watch your next project go together faster & more easily!



Small Tapered Dolly \$105.00

Medium Tapered Dolly \$115.00

Large Tapered Dolly \$125.00

Small T-Dolly \$23.00

Medium T-Dolly \$29.00

Large T-Dolly \$36.00



LANCASTER

SHRINKER/STRETCHER

- These shrinker/stretcher tools can form curves down to a 3 inch radius in a variety of metals.
- Perfect for forming complicated patch pieces for such areas as rear wheel arches, dog legs, window edges, and trunk edges.
- These hand operated units are made in the U.S.A. by Lancaster.

Shrinker Unit Only	\$185.00
Stretcher Unit Only	\$185.00
Combo Unit (1 body with both sets of jaws)	\$270.00
Combo Unit #2 (both bodies and jaws) SALE!	\$365.00
Replacement Jaws Sets (shrinker or stretcher)	\$120.00



METALACE

SHRINKER/STRETCHER



- Hands free operation allows for better control and feel for your metal work with much faster results.
- Features casters for easy transport around the shop
- Features a working height of 47-1/2 inch and a mild steel capacity of 18 ga.
- Heavy duty return spring means quick action and long life
- Fabricated of heavy wall steel tubing for durability
- 1 year manufacturer's warranty
- Made in the U.S.A.



Shrinker/Stretcher Deluxe Kit (as shown) SALE!	\$689.00
Stand Only	\$349.00

JS TOOLS

SHRINKER/STRETCHER



Scan for Video

- With a 6 inch throat depth, it makes forming compound panels quick and easy
- Shrinker and stretcher jaws swap out in seconds with the included Allen wrench
- Wheel it around the shop and use anywhere because of the included wheeled base
- The KSM155 is capable of forming up to 16 ga. mild steel
- High Quality Swedish import
- 1 year warranty

KSM 155 Pro Shrinker/Stretcher (includes steel shrinker and stretcher jaws)	\$2,900.00
KSM 003 Shrinker Jaws for Aluminum	\$490.00
KSM 004 Stretcher Jaws for Aluminum	\$490.00

Finance as low as \$55.00 / Month



BAILEIGH

SHRINKER/STRETCHER



Finance as low as \$157.00 / Month

- The Baileigh MSS-14H is the most heavy duty powered shrinker/stretcher in our line-up.
- Features a 7 inch throat depth, 14 gauge mild steel, 12 gauge aluminum capacity.
- Foot pedal operation, leaving hands free to guide the work piece.
- MSS-14H features a hydraulic powered down stroke, while the return stroke is assisted by air pressure for quicker operation.
- This system allows for between 30 and 40 strokes per minute.
- Ultra heavy duty construction

MSS-14H Power Shrinker/Stretcher	\$5,695.00
--	------------

METALACE

22B ENGLISH WHEEL



Finance as low as
\$37.00 / Month

- Provides outstanding performance on small jobs like motorcycle tanks, tank covers, seat cowls, and aircraft fillets.
- Use on a bench, clamp in a vise, or use with optional welded stand.
- Capacity of 18 ga. steel and .090 inch soft aluminum
- Throat: 22 inches
- Quick release cam on lower anvil
- Anvil yoke has an adjustable axle support so the anvil wheel can be trued to the upper wheel
- Weight: 73 lbs.
- Standard working height (from bench): 16-1/2 inches
- Standard working height (with opt stand): 45 inches
- Upper wheel: 8 inch dia. x 2 inch wide 1045 alloy steel billet, polished to a high surface finish
- 3.25 inch radius anvil wheel standard



22B Benchtop English Wheel (includes 3.25" R anvil wheel) \$695.00
Discovery Kit (includes 22B, 8.50" R, 3.25" R and flat anvil wheels, plus shot bag, mallet, radius gauge and instruction DVD) . . \$995.00
22B Deluxe English Wheel (includes floor stand with die rack, 1.0", 2.50", 3.25", 5.0", 8.50" radii and flat anvils) \$1,345.00
22B Floor Stand (with die rack) \$200.00

METALACE

30F ENGLISH WHEEL



Finance as low as
\$96.00 / Month



- The Covell Signature Line English Wheel features a 30 inch throat and enough muscle to form up to 12 ga mild steel!
- The retractable handle and casters allow for easy portability
- The 3-leg stance gives a solid base on all floors and utilizes a front-mounted rubber pad for stability.
- Throat: 30 inches
- Quick release cam on lower anvil
- Anvil yoke has an adjustable axle support so the anvil wheel can be trued to the upper wheel
- Standard working height (from bench): 16-1/2 inches
- Standard working height (with opt stand): 45 inches
- Upper wheel: 8 inch dia. x 2 inch wide 1045 alloy steel billet, polished to a high surface finish
- 3.25 inch radius anvil wheel standard
- Made in the U.S.A.



30F Assembled English Wheel (includes 2.5", 3.75", 6.0", 12.0", 24.0" radii and flat anvil wheels) \$2,895.00
Covell Signature Line 30F English Wheel (includes 2.5", 3.75", 6.0", 12.0", 24.0" radii and flat anvil wheels) \$3,495.00

METALACE

44F ENGLISH WHEEL



Finance as low as
\$79.00 / Month

- The Metal Ace 44F English Wheel offers metal shaping capabilities for racing, auto restoration and aircraft rebuilding needs.
- Capacity of 16 gauge steel and 1/8 inch soft aluminum
- Anvil yoke is adjustable on both sides of the axle support so the anvil can be trued to the upper wheel
- Features can be rolled into the center of an 88 inch panel
- Quick release cam on lower anvil
- Includes anvil wheel storage rack
- Upper wheel: 8 inch dia. x 3 inch wide 1045 alloy steel billet, polished to a high surface finish
- Height: 73" • Width: 59" • Throat: 44" • Weight: approx. 350 lbs.
- Made in the U.S.A.



44F Assembled English Wheel (includes 2.5", 3.75", 6.0", 12.0", 24.0" radii and flat anvil wheels) \$2,895.00
44F U-Weld English Wheel Kit \$1,695.00



Finance as low as
\$96.00 / Month

METALACE IMPERIAL 28F

- Constructed of cast iron and featuring a generous 28 inch throat, the MetalAce 28F Imperial English Wheel works for body panels, motorcycle fenders, aircraft parts and more!
- This tough small-frame English Wheel provides metalshaping capabilities for any contour, any job.
- Capacity of 16 gauge steel and 1/8 inch soft aluminum
- Throat: 28 inches
- Quick release cam on lower anvil
- Anvil yoke is adjustable on both sides of the axle support so the anvil can be trued to the upper wheel.
- Standard working height: 48.5 inches
- Upper wheel: 8 inch dia. x 3 inch wide 1045 steel polished to a high surface finish
- Made in the U.S.A.



Scan for Video

Imperial 28F English Wheel \$3,500.00
(includes 2" wide, 1.00", 2.50", 3.25", 5.0", 8.50" and flat radius, anvil wheels)

METALACE IMPERIAL 44F

Finance as low as
\$248.00 / Month

- Constructed with a massive cast iron frame and featuring an immense 44 inch throat, the 44F Imperial is the toughest English Wheel you can buy.
- Capacity of 16 gauge steel and 3/16 inch soft aluminum
- Throat: 44 inches
- Quick release cam on lower anvil
- Anvil yoke is adjustable on both sides of the axle support so the anvil can be trued to the upper wheel.
- Weight: approx. 1,850 lbs.
- Standard working height: 48.5 inches
- Upper wheel: 8 inch dia. x 3 inch wide 1045 steel polished to a high surface finish
- Rigid cast iron frame provides a sturdy, vibration-free platform for your job
- Screw lift and upper anvil wheel rotate 90 degrees for larger panels
- Made in the U.S.A.



Imperial 44F English Wheel \$9,000.00
(includes 3" wide, 2.50", 3.75", 6.0", 12.0", 24.0" and flat radius, anvil wheels)

PROLINE PLANISHING HAMMERS

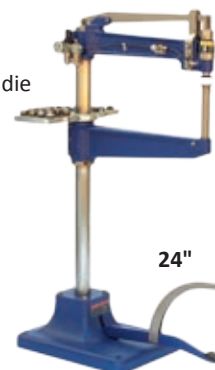
Finance as low as
\$119.00 / Month



- Foot pedal actuation closes die gap and starts air motor simultaneously
- Yoke is 22 inches deep and 12-3/8 inches from the bottom die to the bottom of yoke.
- Includes one 3, 12, and 36 inch radii bottom die, die extraction tool, oil, stainless steel die rack with grommets and regulator.

Portable Planishing Hammer (w/out optional die rack) \$4,345.00

- The lower arm on these cast iron floor models can be lowered to accommodate an optional bottom die holder for deep parts.
- Foot pedal actuation closes die gap and starts air motor simultaneously
- Heavy duty pneumatic motors and sturdy cast iron frames



24" Cast Iron Floor Model Planishing Hammer \$8,295.00
36" Cast Iron Floor Model Planishing Hammer \$12,495.00

MITTLER BROS. PLANISHING HAMMERS

- Excellent beginning hammers to shape steel or aluminum
- Rugged tubular construction
- 4,600 hits per minute @100 psi
- Foot control allows for dual hand control
- 9 radius dies:
Flat, 3/4", 1-1/2", 2", 3", 4", 6", 8", and 12"
- Rear adjuster sets load force and allows for fast die changes

12" Planishing Hammer \$850.00
24" Planishing Hammer \$999.00





Finance as low as
\$181.00 / Month

PROLINE POWER HAMMER

- The ProLine Mini-Max does the work of a large and expensive Pullmax machine without taking up valuable shop space.
- Accepts Pullmax style tooling for shrinking, beading, doming, edge setting, planishing, and more.
- Mild steel capacity: 16 gauge
- Variable Speed
- 1,150 strokes per minute
- Foot control allows for dual hand control
- Includes straight and contour fences
- 1 year warranty



Scan for Video

Mini-Max Variable Speed Power Hammer (110v) \$5,100.00
Mini-Max Deluxe Power Hammer (includes rolling stand, thumbnail shrink dies, 110v) \$6,590.00

BAILEIGH POWER HAMMERS

Finance as low as
\$229.00 / Month



- The Baileigh PH-19 reciprocating power hammer is the little brother of the popular MH-19 Multi-Hammer and uses much of the same tooling.
- The PH-19 is a fixed throw machine similar to a Pullmax and can be used for shrinking, stretching, doming, beading, offsetting and edge turning.
- The PH-19 produces 1700 beats per minute and is available with optional inverter driven variable speed for more precise control in delicate operations.
- Tooling changes out quickly and easily and custom dies can be used for several metal shaping operations.



Scan for Video

Baileigh PH-19 Power Hammer (16 ga capacity, 19" throat) \$8,295.00

- The Baileigh MH-19 and the MH-37HD Multi-Hammers perform functions of a rigid Pullmax machine and a slapping Yoder power hammer.
- Tooling designs and options are endless, but some popular applications are thumbnail shrinking, stretching, flanging, beading, offsetting and louvers.
- The MH-19 and the MH-37HD power hammers feature a 220v single phase motor with an inverter drive that can be adjusted from 0-1500 beats per minute.
- Stroke adjustments can be made on the fly
- The machine also features quick release adjustment handles and a quick change tooling system.



Baileigh MH-19 Power Hammer (16 ga capacity, 19" throat) \$23,395.00
Baileigh MH-37HD Power Hammer (11 ga capacity, 37" throat) \$58,495.50



COVELL ROUNDING OVER DIES

- Covell Rounding-Over dies are great for creating a rounded or radiused edge on sheet metal panels.
- Precision Machined from heat treated steel, these dies can handle up to 16 gauge mild steel
- Designed for the Pexto 622 (see page 36), adapter sleeves are available to fit many other brands of bead roller or rotary machine.

5/16", 1/2", 1", and 1-1/2" dies \$80.00 ea.
300-CVL Complete Set SALE! \$299.00

TRICK-TOOLS CLECO FASTENERS



- Designed for clamping two pieces of sheet metal together
 - Great tools for race car builders, body fabricators, or anyone working with sheet metal.
- 1/8" Cleco Kit, 50 Piece with Pliers \$35.00**
3/16" Cleco Kit, 50 Piece with Pliers \$35.00
Side Grip Cleco Fastener \$3.00 ea.



BEVERLY THROATLESS SHEARS

B-2



- Throatless design lets you turn your work at any angle for straight, curved, and irregular cuts.
- Upper and lower blades are positioned to provide a clean, knurl-free cut, regardless of material thickness.
- Easily cuts mild steel and stainless using tool steel blades
- Drilled for work bench mounting
- SS-2 and SS-3 slitting shears are available for making straight cuts in long sheets of material.

Model	B-1	B-2	B-3	SS-2	SS-3
Capacity (Mild Steel)	14 ga.	10 ga.	3/16"	10 ga.	3/16"
Capacity (Stainless Steel)	18 ga.	14 ga.	10 ga.	14 ga.	10 ga.
Blade Length	4.25"	4.375"	5.375"	3.5"	4.25"
Weight	18 lbs.	36 lbs.	58 lbs.	11 lbs.	25 lbs.



Scan for Video

B-1 Beverly Shear	\$568.00
B-2 Beverly Shear	\$792.00
B-3 Beverly Shear	\$1,145.00
SS-2 Beverly Slitting Shear	\$374.00
SS-3 Beverly Slitting Shear	\$529.00

FEIN SHEARS & NIBBLERS



- FEIN shears and nibblers are suited for quick and warp-free cut-outs in sheet metal.
- Excellent tools for sheet metal shops, race shops, HVAC work, and electrical installation.
- Nibblers utilize a tool free rotating cutting head that can be changed in 45 degree increments.
- FEIN products utilize outstanding ergonomics and compact design for optimal mobility.
- Fein shears feature 4 sided cutting blades for economical, clean, and burr free cuts.
- FEIN CSE model nibbler is specially designed for cutting corrugated sheet metal and features a variable speed motor.



Scan for Video

BLS 1.6x Shear (16 ga. 110v) SALE!	\$895.44
BLS 2.5 Shear (12 ga. 110v) SALE!	\$1,011.36
BLS 3.5 Shear (10 ga. 110v) SALE!	\$1,946.28
BLS 4.2 Shear (8 ga. 110v) SALE!	\$2,357.04
BLK 1.3CSE Variable Speed Nibbler (18 ga. 110v) SALE!	\$659.20
BLK 1.6 Nibbler (16 ga. 110v) SALE!	\$659.20
BLK 3.5 Nibbler (10 ga. 110v) SALE!	\$1,865.64
BLK 5.0 Nibbler (6 ga. 110v) SALE!	\$2,670.36

MIDWEST AVIATION SNIPS

- Aviation snips are great for light sheet metal cutting and trimming
- Useful in race car, heating and cooling, aircraft, and construction work
- Cuts completely to blade tip end which reduces cutting strokes and enables complete and accurate trim cuts.
- The aviation snips require less hand force and stay in adjustment
- Ergonomic handle reduces muscle stress and requires less hand force
- Made in the U.S.A.



Scan for Video

Aviation Snips (left, right, or straight cut) SALE!	\$16.17 ea.
Aviation Snips, 3-piece Set SALE!	\$46.03
Offset Aviation Snips (left, right, or straight cut) SALE!	\$20.85 ea.
Offset Aviation Snips, 2-piece Set (left and right) SALE!	\$39.64

METALACE RADIUS BRAKES

Finance as low as
\$79.00 / Month

- These Radius Brakes are the perfect solution for forming radius bends in mild steel and aluminum.
- Stress cracking of material is eliminated due to the unique design of the apron.
- Especially useful in race car fabrication, as well as automotive and aircraft restoration work.
- 6 radius roller included with 4 ft machine: 1, 2, 3, 4, 5, and 6-5/8 inch OD
- 5 radius rollers included with 6 ft & 8 ft machine: 1, 2, 2-1/2, 3 and 4 inch OD

Model No.	4FT.	6FT	8FT.
Mild Steel Capacity	16 ga. (.063")	16 ga. (.063")	18 ga. (.049")
Aluminum Capacity	.090"	.090"	.063"
Maximum Bend Length	48"	72"	96"
Weight	750 lbs.	850 lbs.	1,090 lbs.



Scan for Video



RB4816

4-Foot Radius Brake	\$3,295.00
6-Foot Radius Brake	\$3,595.00
8-Foot Radius Brake	\$4,295.00
MetalAce Radius Brake Back Gauge	\$195.00

TENNSMITH MANUAL SLIP ROLLS



SR24

- Combines precision-turned and polished high carbon steel rolls with cast iron end frames.
- Features large roll adjusting screws and front handle to lift upper roll for material removal.
- 3-driven roll machines allow for greater traction on hard to bend materials.

SR24, 24" Slip Roll (2 driven rolls)	\$780.00
SR324, 24" Slip Roll (3 driven rolls)	\$945.00
SR36, 36" Slip Roll (2 driven rolls)	\$895.00
SR336, 36" Slip Roll (3 driven rolls)	\$1,045.00
SR42, 42" Slip Roll (2 driven rolls)	\$995.00
SR342, 42" Slip Roll (3 driven rolls)	\$1,150.00
SR48, 48" Slip Roll (3 driven rolls)	\$3,550.00

Model No.	SR24/SR324	SR36/SR336	SR42/SR342	SR48
Capacity (Mild Steel)	20 ga.	22 ga.	24 ga.	16 ga.
Max. Forming Length	24"	36"	42"	49"
Diameter of Rolls	2"	2"	2"	3"
Min. Forming Radius	1"	1"	1"	1-1/2"
Wire Grooves	3/16", 1/4", 5/16"	3/16", 1/4", 5/16"	1/4", 5/16", 3/8"	3/8", 1/2", 5/8"
Ship Weight	190 lbs.	250 lbs.	270 lbs.	775 lbs.

NATIONAL POWERED SLIP ROLLS

Finance as low as
\$186.00 / Month

- National's electric powered Slip Rolls feature 3 inch power rolls designed for simple operation.
- Designed for production rolling of light gauge sheet metal into curved panels.
- The powered rolls are precision turned, ground, and polished high carbon steel.
- All three rolls are power driven and come with a standard forward and reverse drum switch.
- These machines feature a quick release upper roll, positive chain drive, and a HD gear box.
- Available in 110/220v 1ph and 220/440v 3 ph.



NR7216

NR4816 (48" working length, 16 gauge mild steel capacity)	\$6,763.00
NR7216 (72" working length, 16 gauge mild steel capacity)	\$8,220.00

TOLL FREE ORDER LINE 1-877-826-7268 OR 641-628-3860

BOYD-BUILT RACER BRAKE



Finance as low as
\$51.00 / Month

- 7 foot sheet metal brake is ideal for race car bodies, HVAC work, and more.
- Includes 1 inch radius bar for optional radius bending.
- Adjustable tension bars, adjustable counterweights, and plate steel construction make these brakes a great value for a fabricator on a budget.

SPECIFICATIONS	7FT.
Mild Steel Capacity	20 ga.
Aluminum Capacity	.060"
Minimum Flange @ Capacity	5/8"
Weight	495 lbs

Boyd-Built 7ft Racer Brake \$1,995.00

MITTLER BROS. ULTIMATE BOX & PAN BRAKE

- These brakes feature a "3 finger" design, incorporating movable fingers on the bed and apron, as well as the usual upper fingers, perfect for extremely difficult bend combinations.
- Unit ships standard with: 1", 2", 3", 6", 12", 24" Upper Fingers, Bed Fingers, and Apron (leaf).
- Ultimate Box & Pan Brake is capable of creating a 3-1/2 inch depth of box, and has a minimum flange capacity of 1 inch.



Finance as low as
\$89.00 / Month



Scan for Video

Ultimate Box & Pan Brake (48" benchtop, 16 ga capacity) \$3,250.00
48" Floor Stand \$275.00
Ultimate Box & Pan Brake (72" floor, 18 ga capacity) \$5,775.00

MITTLER BROS. ULTIMATE FOOT SHEAR



3000-72-24

Finance as low as
\$164.00 / Month

- Designed with the fabricator in mind, these shears are the most economical way to accurately cut large pieces of material.
- Mittler Shears feature a reversible blade, adjustable blade clearance, adjustable hold down pressure, and a precision fabricated steel construction.

SPECIFICATIONS	3000-52-16	3000-72-24
Mild Steel Capacity	16 ga.	24 ga.
Aluminum Capacity	.080"	.040"
Cutting Length (inches)	52	72
Cutting Width (inches)	52	72
Price	\$3,475.00	\$5,950.00

BAILEIGH MAGNETIC BRAKES

- Baileigh magnetic sheet metal brakes feature nearly endless bending possibilities.
- Capable of forming boxes to almost any depth due to their unlimited finger depth
- Features a stroke angle control that can be set for repeatable bends
- Includes a back gauge, full clamping bar, and box finger set
- 16 ga mild steel capacity
- 220v 1ph power for easy placement



Finance as low as
\$63.00 / Month

BB-4816M (48" working length, 16 gauge mild steel capacity) \$2,295.00
BB-7216M (72" working length, 16 gauge mild steel capacity) \$6,695.00
BB-9616M (96" working length, 16 gauge mild steel capacity) \$7,695.00



QUALITY TOOLS BACKED BY OUR NO JUNK GUARANTEE

TENNSMITH BRAKES & SHEARS

Tennsmith offers a wide variety of quality brakes and shears. These heavy duty units offer industry leading features such as replaceable nose bars, high-chromium blades, and cast frame construction. A wide range of machines covers 4 to 12 foot widths, and 22 gauge through 12 gauge capacity. These U.S.A. made machines feature a 3-year manufacturer's warranty.

MODEL NO.	MILD STEEL CAPACITY	CUTTING LENGTH	PRICE
36 (Foot Shear)	16 ga.	36"	\$2,150.00
36A (Air)	16 ga.	36"	\$4,200.00
52 (Foot)	16 ga.	52"	\$2,860.00
52A (Air)	16 ga.	52"	\$5,360.00
52H (Hydraulic)	16 ga.	52"	\$6,525.00
SK1020 (Hand)	20 ga.	120"	\$10,500.00

52-TEN



Finance as low as \$78.00 / Month

HAND BRAKES



HB121-18

Finance as low as \$150.00 / Month

MODEL NO.	MILD STEEL CAPACITY	BENDING LENGTH	PRICE
S48-22*	22 ga.	48"	\$695.00
HBS48-16*	16 ga.	48"	\$1,295.00
HB48-12	12 ga.	48"	\$3,465.00
HB73-16	16 ga.	73"	\$3,575.00
HB97-18	18 ga.	97"	\$3,780.00
HB97-16	16 ga.	97"	\$4,300.00
HB97-12	12 ga.	97"	\$6,900.00
HB121-18	18 ga.	121"	\$5,460.00
HB121-16	16 ga.	121"	\$6,500.00
HB121-14	14 ga.	121"	\$6,950.00
HB145-18	18 ga.	145"	\$7,300.00

*Benchtop Units- optional floor stand \$235.00

BOX & PAN BRAKES

MODEL NO.	MILD STEEL CAPACITY	BENDING LENGTH	MAX. DEPTH OF BOX	PRICE
U48-22*	22 ga.	48"	3"	\$895.00
HBU48-16*	16 ga.	48"	3"	\$1,465.00
HBU48-12	12 ga.	48"	4"	\$4,095.00
HBU72-16	16 ga.	72"	4"	\$4,595.00

*Benchtop Units- optional floor stand \$235.00



HBU48-12

Finance as low as \$113.00 / Month



F6 48-12

Finance as low as \$148.00 / Month

MODEL NO.	MILD STEEL CAPACITY	BENDING LENGTH	MAX. DEPTH OF BOX	PRICE
F6 48-12	12 ga.	48-1/4"	6"	\$5,395.00
F6 72-12	12 ga.	73"	6"	\$6,495.00
F6 96-12	12 ga.	97"	6"	\$7,995.00
F6 120-14	14 ga.	121"	6"	\$9,595.00

TOLL FREE ORDER LINE 1-877-826-7268 OR 641-628-3860

DAKE

ARBOR PRESSES



- Single Leverage Arbor Presses feature an adjustable shimmed ram cap, adjustable handle, and smooth action gears for precise ram control.
- Up to 3 ton capacity on the largest model

Dake Single Leverage Arbor Press, 1 ton	\$295.00
Dake Single Leverage Arbor Press, 1.5 ton	\$430.00
Dake Single Leverage Arbor Press, 3 ton	\$650.00

RATCHET LEVERAGE

- These Ratchet Leverage Arbor Presses feature a handwheel ram advance and lever counter weight.
- Up to 5 ton capacity on the largest model

1-1/2 Ratchet Leverage Arbor Press, 3 ton	\$925.00
1-1/2B Ratchet Leverage Arbor Press, 3 ton	\$1,450.00
1-1/2C Ratchet Leverage Arbor Press, 3 ton	\$2,595.00
No. 3A Ratchet Leverage Arbor Press, 5 ton	\$2,950.00
No. 4M Ratchet Leverage Arbor Press, 5 ton	\$5,700.00



Scan for Video

COMPOUND LEVERAGE

- The compound leverage mechanism results in a greater pressure applied with minimum effort.
- A sliding pin easily converts from compound to single leverage.
- Up to 5 ton capacity on the largest model

No. 2 Compound Leverage Arbor Press, 6 ton	\$2,300.00
No. 2B Compound Leverage Arbor Press, 6 ton	\$2,300.00
No. 3 Compound Leverage Arbor Press, 12 ton	\$4,500.00
No. 4 Compound Leverage Arbor Press, 12 ton	\$6,950.00
No. 5 Compound Leverage Arbor Press, 15 ton	\$12,800.00

**DAKE**

MANUAL H-FRAME PRESSES

- Hand operated for economical performance
- Rapid ram return starts as soon as the release valve is opened and ram can be stopped at any point.
- Manual H-Frame Presses feature a large diameter polished piston and the hydraulic pressing cylinder can be relocated to the right or left.
- Economically priced and built to last

Dake B10 36" H-Frame Bench Mount Press, 10 ton	\$300.00
Dake F10 H-Frame Bench Mount Press, 10 ton	\$485.00
Dake Force 10 Manual H-Frame Press, 10 ton	\$2,450.00
Dake 25H Hand Hydraulic H-Frame Press, 25 ton	\$3,150.00
Dake 50H Hand Hydraulic H-Frame Press, 50 ton	\$4,195.00
Dake 75H Hand Hydraulic H-Frame Press, 75 ton	\$5,100.00

Finance as low as
\$86.00 / Month

POWERED PRESSES

- The quiet, low speed hydraulic components offer greater efficiency and extremely smooth pressing motion.
- The double-acting cylinder makes ram positioning a breeze, with the 4-way valve hydraulic control.

Dake Force 10DA Electrical H-Frame Press, 10 ton	\$2,950.00
Dake Force 25DA Electrical H-Frame Press, 25 ton	\$3,950.00
Dake Force 50DA Electrical H-Frame Press, 50 ton	\$6,450.00
Dake Force 40 Electrical H-Frame Press, 40 ton	\$9,975.00
Dake Force 70 Electrical H-Frame Press, 70 ton	\$12,575.00
Dake Force 100 Electrical H-Frame Press, 100 ton	\$14,995.00

Finance as low as
\$178.00 / Month

Scan for Video

CHECK OUT WWW.TRICK-TOOLS.COM FOR 8000+ PRODUCTS

EDWARDS IRONWORKERS

Finance as low as
\$146.00 / Month

Jaws IV 25 Ton



- Jaws Jr. 25 ton Ironworker is made for small shops, but offers big capabilities.
- Features two available work stations, incorporating one universal open tooling cavity.

- Both stations operate as a unit
- Lowest price for Ironworker available
- Capable of punching 1 inch holes in 5/16 inch plate

Jaws Jr. 25 ton (110/220v 1 hp 1 ph) \$5,296.00



Jaws IV 55 Ton

Capacities	Jaws IV 40 ton	Jaws IV 50 ton	Jaws IV 55 ton	Jaws V 65 ton	Jaws IV 100 ton
Punch	1" - 1/2"	1" - 5/8"	1-1/16" - 5/8"	1-1/16" - 3/4"	1-1/16" - 1"
Plate Shear	3/8" x 10"	1/2" x 10"	3/8" x 14"	3/8" x 24"	3/4" x 14"
Angle Shear	3" x 1/4"	4" x 1/4"	4" x 1/4"	5" x 3/8"	6" x 1/2"

Jaws IV 40 ton (220v 5 hp 3 ph, add \$300 for 1 ph) \$7,796.00

Jaws IV 50 ton (220v 5 hp 3 ph, add \$300 for 1 ph) \$8,896.00

Jaws IV 55 ton (220v 5 hp 3 ph, add \$300 for 1 ph) \$9,496.00

Jaws V 65 ton (220v 7.5 hp 3 ph, add \$300 for 1 ph) \$16,996.00

Jaws IV 100 ton (220v 7.5 hp 3 ph, add \$300 for 1 ph) \$18,496.00

Hydraulic Accessory Pack up to 60 ton (Required for use of accessories) \$750.00

Hydraulic Accessory Pack 65 ton and up (Required for use of accessories) \$1,000.00

ACCESSORIES

- Utilizes the hydraulic system on Edwards Ironworker
- Hydraulic accessory option required for use of accessories
- Tube Bender Accessory has a 2-1/2 inch x .095 capacity



20 Ton

H-Frame Press Benchtop Accessory, 20 ton \$1,896.00

H-Frame Press Accessory, 40 ton \$3,996.00

12" Press Brake Tooling for 20 ton H-Frame Press \$1,426.00

32" Press Brake Tooling for 40 ton H-Frame Press \$2,856.00

Hydraulic Tubing Bender Accessory \$1,896.00



- Electric/hydraulic Porta Power allows the use of Edwards accessories without the requirement of an Ironworker.
- The 20 ton Horizontal Press makes short work of a variety of complex metal forming operations.

HAT6000

HAT6000 Horizontal Press Accessory, 20 ton \$6,796.00

Electric/hydraulic Porta Power, 3,000 psi \$3,000.00



Finance as low as
\$552.00 / Month

BAILEIGH 42 TON PRESS BRAKE

- This Baileigh Industrial press brake is great for shops of any size.
- Operates on 110 volt power and features a large 42 ton capacity.
- Hands free foot pedal operation and digital read-outs ensure safety and repeatability.
- Includes Multi-Vee bottom die and upper punch
- Handles bump die tooling with it's 2 inch stroke and large 7-3/4 inch open height.
- Mild Steel Capacity: 1/4 inch

Baileigh Hydraulic Press Brake, 42 ton \$19,995.00

SCOTCHMAN IRONWORKERS

Finance as low as
\$176.00 / Month

5014-TM 50 Ton



- This 50 ton Ironworker provides incredible shearing, punching, and notching capabilities.
- Comes standard with seven stations including a punching station, angle and bar shears, and a new rectangular coping station.
- This Ironworker features a unique punching station with a 3-station revolving turret.

5014-TM 50 ton (220v 3 hp 3 ph, add \$440 for 1 ph)\$12,190.00



Porta-Fab 45 Ton

Capacities	Porta-Fab 25 ton	5014-TM 50 ton	6509-24M 65 ton	9012-24M 90 ton	12014-24M 100 ton
Punch	1-1/8" - 1/2"	1" - 5/8"	1-1/16" - 5/8"	1-1/16" - 3/4"	1-1/16" - 1"
Plate Shear	1/2" x 4"	1/2" x 10"	3/8" x 14"	3/8" x 24"	3/4" x 14"
Angle Shear	3" x 5/16"	4" x 1/4"	4" x 1/4"	5" x 3/8"	6" x 1/2"

Porta-Fab 45 ton (110v 2 hp, add \$1,000 for 220v 1ph)\$6,390.00

50514-CM 50 ton (220v 5 hp 3 ph, add \$440 for 1 ph)\$9,550.00

6509-24M 65 ton (220v 5 hp 3 ph, add \$480 for 1 ph)\$17,790.00

9012-24M 90 ton (220v 5 hp 3 ph, add \$480 for 1 ph)\$21,190.00

12012-24M 120 ton (220v 5 hp 3 ph, add \$480 for 1 ph)\$24,890.00

BENCHTOP PRESS BENCHTOP PRESS BRAKE

- Perfect solution for needing to bend small sections of sheet metal and plate steel.
- Its small footprint makes this press a perfect fit for those with limited working space.
- With the optional 4-sided V-die made from 4140 tool steel, tight radius bends can be made in lighter weight materials.
- Uses common 20 ton bottle jack and requires no outside power source
- Ideal for making suspension and body support brackets
- Bottle jack not included



Scan for Video



CAPACITIES

- 20 tons maximum
- 8" in 3/8" mild steel
- 10" in 1/4" mild steel
- 4" in 1/2" mild steel
- 9" in 5/16" mild steel
- 2" in 5/8" mild steel

Benchtop Press Brake\$399.95

4-way V-die (1/4", 1/2", 3/4", and 1" openings)\$199.95

H-frame Press Option\$199.95

MITTLER BROS LOUVER PRESS KIT

Finance as low as
\$47.00 / Month

- This kit includes a 10 ton hydraulic ram, precision slide assembly, die mounting plate, one set of your choice of louver dies, bill of materials, blueprints, and complete instructions for building a 48 inch throat depth press.
- Punches steel or aluminum up to 16 ga.
- Accepts all MB bench press tooling
- Up to 5 inch long louvers



Complete Louver Punch Kit (with choice of one louver punch set)\$1,725.00

Additional 1", 2", or 3" Louver Die\$475.00

Additional 4" or 5" Louver Die\$495.00

Air/Hydraulic Pump w/ 20' Hose & Fitting\$578.00



FOLLOW US ON SOCIAL MEDIA:





MITTLER BROS BENCH PRESS

- This versatile tool is one of the latest offerings from Mittler Brothers and is sure to increase productivity.
- Use it with ironworker tooling or as a heavy duty arbor press.
- 25 inch extra deep throat
- Rugged construction
- Accepts all MB bench press tooling
- Includes a slug ejector and spring loaded center
- Can be used with most common hydraulic pumps

10 Ton Hydraulic Bench Press	\$2,325.00
Floor Stand w/ Casters	\$325.00
Electric/Hydraulic Pump w/ 10' Hose	\$1,675.00

MITTLER BROS BENCH PRESS



Scan for Video

- Fits punch & flare tools
- Rugged construction
- Bronze bushings
- Max capacity: 3 inch dia. punch & flare 16 gauge steel
- 12 inch deep throat
- Can be used as a standard arbor press
- Uses standard punch & dies for round, square, & oblong holes



Standard Bench Press (3 ton)	\$670.00
Hydraulic Bench Press (5 ton)	\$795.00
Air/Hydraulic Pump, Hose and Fitting	\$548.00

MITTLER BROS PRESS ACCESSORIES

- Mittler Bros. Bench Press accessories turn your simple press into a brake, shear, corner notcher, louver press, and so much more!
- Mittler Bros. Bench Press accessories will fit all Mittler bench presses.

Complete Louver Assembly (w/ one die & tooling adapter)	\$775.00
Additional Louver Dies (1", 2", or 3")	\$475.00 ea.
(4" or 5")	\$495.00 ea.
90° Brake Kit	\$195.00
Corner Notcher Kit	\$195.00
Shear Kit	\$195.00
Corner Radius Punch (1/4", 1/2", 3/4", 1")	\$250.00
Shrinker / Stretcher Set	\$315.00

PUNCH & DIES (heat treated tool steel with 1/32" die clearance for material up to 16 ga. mild steel)

3/16" - 1" Punch and Dies	\$90.00 ea.
Dzus Punch and Die Set	\$295.00
Punch & Die Mount Kit	\$155.00



90° Brake



Louver Die



Corner Notcher



Shear



JAMIEY JORDAN SERIES PUNCH & FLARES

- Create unique shaped holes with or without a flare
- Simply drill three pilot holes with included template, and place the tooling and material in a press!

Oval Punch & Flare 3 Piece Set (16 ga steel, .060" aluminum)	\$1,395.00
Triangle Punch & Flare 3 Piece Set (16 ga steel, .060" aluminum)	\$1,395.00
See website for individual sizes	



MITTLER BROS PUNCH & FLARES



- Mittler Bros. Punch & Flare tools can create a smooth hole, with or without a flare in one easy step.
- Drill a pilot hole for the draw bolt, then apply the tool and tighten the bolt.
- Works great in our Mittler Bros. Bench Press with no drilling needed.
- 16 gauge mild steel maximum

1", 1-1/4", 1-1/2", 1-3/4", 2", 2-1/2", 2-5/8", 3" Individual Sizes Starting at \$110.00 ea.
 1300-402 6 Piece Punch & Flare Set (1" to 2-1/2") \$685.00
 1300-403 7 Piece Punch & Flare Set (1" to 3", 2-5/8" not included) \$815.00

MITTLER BROS FLARE TOOLS



- Flare an existing hole in sheet metal panels for improved strength and appearance.
- Use in a Mittler Bros. bench press or by simply using the draw bolt and a standard wrench.
- 16 gauge steel is the maximum thickness.

1/2", 5/8", 3/4", 1", 1-1/4", 1-1/2", 1-3/4", 2", 2-1/2" Individual Sizes .. Starting at \$45.00 ea.
 1300-401 9 Piece Flare Tool Set (1/2" to 2-1/2") \$350.00

MITTLER BROS PUNCH & BEAD TOOLS



- Our Punch & Bead tools can create a smooth hole, with or without a bead in one easy step.
- Simply drill a pilot hole for the draw bolt, then apply the tool and tighten the bolt.
- Works great in our Bench Press with no drilling needed for even faster production.
- 19 gauge steel maximum

1", 1-1/4", 1-1/2", 1-3/4", 2", 2-1/2", 3" Individual Sizes. Starting at \$110.00 ea.
 1300-402-B 6 Piece Punch & Bead Set (1", 1-1/4", 1-1/2", 1-3/4", 2" and 2-1/2") \$685.00
 1300-403-B 7 Piece Punch & Bead Set (1", 1-1/4", 1-1/2", 1-3/4", 2", 2-1/2" and 3")..... \$815.00

JMR PORTABLE DIMPLE DIES

- The JMR Portable Punch and Die Kit is a great way to punch and dimple panels which are too large to fit into a press or are already welded in place.
- This kit will allow you to punch holes and dimple both steel and aluminum.
- Features a 10 Ton hydraulic cylinder
- Useful for working on off road vehicles or job sites where transporting a press is not practical.



DDH105 Standard Hydraulic Kit (includes five piece dimple and punch set with hand pump, ram, and adapters)..... \$795.00
 DDAH105 Air/Hydraulic Kit (includes five piece dimple and punch set with air/hydraulic pump, ram, and adapters) \$995.00
 DDNP105 Dimple Dies, Punches, and Ram Only (does not include pump, hose, or hydraulic fittings) \$745.00



JMR DIMPLE DIES

- JMR Dimple Dies are used to improve the strength and appearance of a panel
- Will flange or flare an existing hole in sheet metal up to .125" 4130 Chrome Moly.
- Each size is self centering, so they work great in a press or Ironworker.
- Precision machined from hardened tool steel for years of use

DD1007 7 Piece Dimple Die Set (1/2", 3/4", 1", 1-1/4", 1-1/2", 1-3/4", and 2").....\$525.00
 DD1005 5 Piece Dimple Die Set (1/2", 1", 1-1/2", 2" and 2-1/2").....\$495.00
 DD1004 4 Piece Dimple Die Set (1/2", 1", 1-1/2", and 2").....\$325.00
 DD1002 2 Piece Dimple Die Set (2-1/2", and 3")\$425.00

ROPER-WHITNEY

HAND PUNCHES

XX



5 Jr

- These Hand Punches by Roper Whitney can save a lot of time over drilling sheet metal and are much more accurate.
- The 5 Jr punch has a standard 1-3/4" throat depth, while the XX has a deep throat configuration to punch up to 3-1/4" from the edge with up to an 1-3/8" flange.
- 1.2 tons of punching power
- XX kit includes: 5/32", 7/32", 9/32", 11/32", 13/32", 15/32", and 17/32" round punch and die
- Optional bench mount base available
- 5 Jr kit includes: 3/32", 1/8", 5/32", 3/16", 7/32", 1/4", and 9/32" punch and die



Scan for Video

5 Jr Hand Punch Kit	\$79.00
5 Jr Bench Mounting Base (not included with kit)	\$29.00
XX Hand Punch Kit	\$249.00
XX Bench Mounting Base (not included with kit)	\$39.00

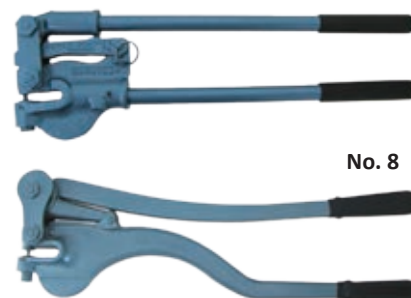
ROPER-WHITNEY

MEDIUM DUTY PUNCHES

- These Roper Whitney Heavy Duty Punches are highly portable and will fit any tool chest.
- The leverage design of these tools assures easy linear operation.

- Two hand linear operation
- Throat Depth: 1.625"
- Throat Height: .313"
- Weight: 17.5 lbs
- No. 7A punch and dies: 1/16" - 7/16"
- No. 8 punch and dies: 1/16" - 1/2"

No. 7A Punch (two hand linear operation)	\$295.00
No. 7A Mounting Base	\$180.00
No. 8 Punch (5 ton capacity, two hand linear operation)	\$395.00
No. 8 Mounting Base	\$120.00
No. 7A and 8 Punch Dies	Starting at \$25.00 ea.



No. 7A

No. 8

ROPER-WHITNEY

BENCH PUNCHES

No. 16



- The Roper Whitney bench punches feature a heavy duty steel frame and are designed to be mounted to a sturdy work bench.
- The No. 16 punch is able to deliver up to 7.3 tons of punching power, while the No. 17 punch is able to generate up to 5 tons of pressure, enough to punch a 1/2 inch hole in 1/8 inch mild steel.
- The die shoe on both tools are adjustable to permit the proper alignment of punches and dies for punching thin sheet metal.

No. 16 Punch (7.3 ton capacity, 3.25" throat depth, 1.75" throat height)	\$495.00
No. 17 Punch (5 ton capacity, 6.5" throat depth, 2.125" throat height)	\$595.00
No. 16 and 17 Punch Dies	Starting at \$32.50 ea.

No. 17



ROPER-WHITNEY

ROTARY PUNCHES

- The Roper Whitney Rotary Style Punches produce impressive amounts of punching power.
- The die shoe on both tools are adjustable to permit the proper alignment of punches and dies for punching thin sheet metal.

No. 10 Punch (7.3 ton capacity, 1.5" throat depth, 1.125" throat height)	\$469.00
No. 10 Mounting Base	\$79.00
No. 12 Punch (7.3 ton capacity, 2.25" throat depth, 2.125" throat height)	\$499.00
No. 12 Mounting Base	\$79.00
No. 20 Punch (20 ton capacity, 2.25" throat depth, 1.625" throat height)	\$529.00



No. 12



No. 20



No. 10

FEIN

SHEET METAL CUTTERS



Scan for Video

- Slugger sheet metal cutters easily outperform standard hole saws by cutting a more accurate hole up to three times faster with far superior tool life.
- These precision ground cutters can be used in a hand drill or drill press and will leave a smooth finish with minimal material deformation.
- Slugger sheet metal cutters are the industry standard for cutting clean holes in sheet metal and plate up to 1/4 inch thick.
- Slugger sheet metal cutters make a great companion to our dimple dies and flare tools.

SMS000 Sheet Metal Cutter Set (includes sizes 5/16", 3/8", 7/16", 1/2", 9/16", 5/8", 3/4" w/ arbor, pilot pin, and carrying case) . \$89.95

SM000VS Sheet Metal Cutter Set (includes sizes 1", 1-1/4", 1-1/2", 1-3/4", 2", w/ two arbors, and carrying case) \$185.00

SM000 Sheet Metal Cutter Set (includes sizes 7/8", 1-1/8", 1-3/8", 1-3/4", 2", 2-1/2" w/ two arbors, and carrying case) \$195.00

FEIN

SLUGGER CUTTERS



- Short Slugger Annular Cutters utilize the same technology as standard cutters, but have a 1/2 inch shank and maximum 3/4 inch depth of cut.
- An optional arbor and lower horsepower requirements make these ideal for use in small mills and drill presses.
- A center punch mark is all that is required to locate and start the spring-loaded pilot pin.

SJS001 ShortSlugger Cutter Set (0.75" depth, 9/16", 11/16", 13/16", 15/16", 1-1/16") \$120.00

SJS000 ShortSlugger Cutter Set (0.75" depth, 1/2", 9/16", 5/8", 11/16", 3/4", 13/16", 7/8", 15/16", 1", 1-1/16") \$175.00

ShortSlugger Arbor Assembly \$35.00



Scan for Video

DRILLING JIGS AND GUIDES



- These drilling jigs and guides are designed to allow the user to drill precise holes in tubing, pipe, and round stock using a portable electric hand drill and/or drill press.



CI-1 Center-It Jig (For drill press use, holds round tube and pipe) \$16.99

Drill-Rite Guide (portable drill use only, fits pipe dimensions: 1/2" - 2-1/2") \$59.95

Tube Drilling Combo (includes Center-It Jig and Drill-Rite Guide). \$69.99

FEIN

FRICTION DRILLING



- Flowdrill exists to provide an inexpensive, high quality replacement for nutserts or weld-on nuts and bungs when working with thin wall material.
- Flowdrill is a solid tungsten carbide tool, which uses friction to form material into a cylindrical or cone shape.
- This formed hole can then be tapped and used for O2 or EGT sensor installations, brackets and tabs, sheet metal fastening, etc.
- Flowdrill bits can be used in drill presses and milling machines.



Flowdrill Starter Kit #1 (1/4", 5/16") \$750.00

Flowdrill Starter Kit #2 (10-32, 1/4", 5/16", 3/8") \$1,025.00

Flowdrill Starter Kit for O2 Sensors (Hole Sizes: M18 x 1.5") \$850.00

Flow2go Portable Flowdrill Kit (up to 5/16" OD) \$1,250.00



Scan for Video



QUALITY TOOLS BACKED BY OUR NO JUNK GUARANTEE

JHM MAG DRILLS

- Mag drills, or magnetic base drills, are great for core drilling holes in heavy steel.
- The electromagnetic base holds these tools in a fixed position while the cutter is fed into the material just like a standard drill press.
- Considerations when choosing a mag drill are maximum hole diameter needed, thickness of material being drilled, and space restrictions (i.e. low profile for truck frame drilling).



JHM USA 5



JHM USA 101



JHM Magforce



JHM Holemaker II

Model No.	Motor	Number of Speeds	Spindle Speed	Drilling Capacity	Spindle Taper	Spindle Travel	Price
JHM ShortSlugger	.75 hp	1	680 rpm	1-3/16"	3/4" Weldon Shank	2-1/2"	\$695.00
JHM Holemaker II	1.75 hp	1	450 rpm	1-3/8"	3/4" Weldon Shank	4-1/4"	\$795.00
JHM USA 101	1.75 hp	1	450 rpm	1-1/2"	3/4" Weldon Shank	2-1/2"	\$995.00
JHM Magforce	1.6 hp	1	450 rpm	1-5/8"	3/4" Weldon Shank	2-1/2"	\$1,195.00
JHM USA 5	1.8 hp	2	330, 660 rpm	2-3/8"	3/4" Weldon Shank	3-5/8"	\$1,495.00



Finance as low as \$90.00 / Month

ELLIS 9400 DRILL PRESS

- The Ellis drill press is one of the most versatile drill presses available.
- Comes standard with power down-feed, infinitely variable speed operation, instantaneous reverse for tapping, and a T-slotted table and base; its value is unsurpassed.
- This extremely durable drill press features a 4 inch diameter column, 3 inch diameter quill, and a 2 hp motor.

Spindle Speeds	Drills to Center	Drilling Capacity	Tapping Capacity	Morse Taper	Spindle Travel	Spindle to Table (max.)	Spindle to Base	Table	Base
0-1200 rpm	18-1/8"	Steel: 1-1/16" Cast Iron: 1-1/4"	3/4"	No. 3	5-3/8"	27-1/4"	46-1/4"	15-7/8"	16-3/8"x 26-5/8"

9400 Drill Press (110v) SALE!	\$3,295.00
Ball Bearing Chuck	\$150.00
Drill Press Vise (4-1/2" Capacity)	\$250.00
Milling Table (11" Crossfeed, 6-1/2" in/out feed).	\$400.00



TB-16V

DAKE DRILL PRESSES

- Dake drill presses are designed for drilling in metal and can be used for a variety of jobs such as tube notching, boring with annular cutters, or forming with our Flowdrill system.
- Variable speed models are powered by a step pulley system or an inverter drive for infinite rpm adjustments.
- The heavy duty column reduces flex while the machined t-slots in the table and base allow for mounting and fixturing for a secure hold on your material.

TB-16V Bench Model Variable Speed Drill Press (110v, Variable Step Pulley) SALE!	\$1,377.50
SB-25V Variable Speed Drill Press (110v, Inverter Drive) SALE!	\$2,327.50
SB-32V Variable Speed Drill Press (110v, Inverter Drive) SALE!	\$2,802.50
SB-250V Variable Speed Drill Press (220v 3ph, Inverter Drive, Power Down Feed) SALE!	\$3,206.25



SB-250V

PEXTO

ROTARY MACHINE

- This Pexto 622 forming machine offers a variety of shapes and capabilities for a combination of uses: beading, crimping, double seaming, turning, burring, wiring, elbow edging, flanging, and flattening.
- The 622 Series is equipped with the addition of a 7 inch deep throat for additional forming capabilities.
- The 622 includes 5 sets of rolls and gauges, or may be ordered without rolls as the 622LR.
- 24 gauge mild steel capacity



622

622 Pexto Rotary Machine (includes Pexto 622, bench mounting base, and rolls) \$995.00
622LR Pexto Rotary Machine (less rolls) \$875.00
Bead Form Boss Roll Set (for tube beading with Pexto 622 or Tennsmith R22 machines) \$179.00

BAILEIGH

HD BEAD ROLLER



Finance as low as \$165.00 / Month

- The BR16E-36 Bead Roller features a 36" deep x 12" high throat - the largest available on the market!
- The bead roller is equipped with a variable speed frequency drive with a foot pedal control, giving the operator unlimited speed adjustment.
- Another unique feature is the quick release upper die that allows the upper roll to be disengaged from the material, allowing the operator to begin or end a design in the middle of a panel.

- Steel Capacity: 16 gauge
- Aluminum Capacity: .065
- Stainless Capacity: 20 gauge
- Throat Depth: 36"
- Throat Height: 12"
- Motor: 1/2 hp 110v

BR-16E-36 Power Bead Roller \$5,995.00
Roll Sets Starting at \$125.00 ea.

MITTLER BROS.

TALL THROAT BEAD ROLLERS



- This new version of the popular Mittler bead roller allows the beading of high crown panels or pan shaped pieces, in addition to flat sheet metal.
- This unit comes standard with a variable speed electric motor and foot pedal controls.

- Variable speed foot control
- Forward/Reverse switch
- 4" tall throat
- Includes 1 standard roll set
- .040" mild steel or .050" aluminum capacity
- Upgraded motor available for 16 ga applications

24" Throat Model (add \$550 for industrial motor) \$925.00
36" Throat Model (add \$525 for industrial motor) \$1,150.00
Standard Roll Sets Starting at: \$100.00
High Crown Roll Sets \$250.00

JAMEY JORDAN SERIES

- Jamey Jordan Tall Throat Bead Rollers feature an adjustable shaft for greater flexibility with bead profiles.
- Allows the beading of high crown panels or shaped pieces, in addition to flat sheet metal.
- This unit comes standard with a variable speed electric motor and foot pedal controls.
- Constructed from plate steel with heat treated gears, 3/4 inch heavy duty shafts, and oillite bushings at the rotation points.
- Capacity is rated for 19 ga steel and .050" aluminum for standard motors and 16 ga steel and .060" aluminum for industrial motors



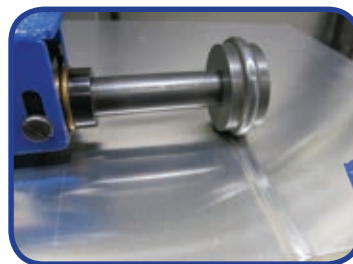
24" Jamey Jordan Series High Throat Bead Roller (add \$545 for industrial motor) \$1,150.00
24" Jamey Jordan Series High Throat Bead Roller Deluxe Kit **SALE!** \$2,294.05
36" Jamey Jordan Series High Throat Bead Roller (add \$480 for industrial motor) \$1,395.00
36" Jamey Jordan Series High Throat Bead Roller Deluxe Kit **SALE!** \$2,468.65

CHECK OUT WWW.TRICK-TOOLS.COM FOR 8000+ PRODUCTS

MITTLER BROS. BEAD ROLLERS

Finance as low as
\$36.00 / Month

- Mittler Bros Bead Rollers are designed to handle .040" mild steel (20 ga.), .050 inch aluminum, or up to 16 ga. steel, .060 inch aluminum with industrial motor upgrade.
- Largest selection of heat treated rolls to choose from
- Adjustable depth of bead
- Variable speed foot control allows for hands free operation
- Oilite bushings at all rotation points for long life
- Heat treated gears for years of trouble free operation
- 1-1/8 inch throat height
- Forward and reverse switch for left or right side operation



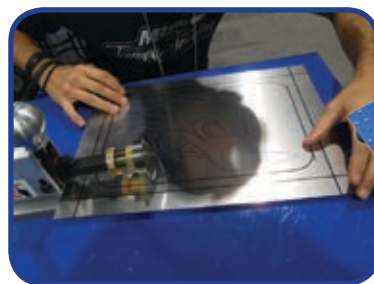
24" Throat Manual Roll	\$595.00
24" Throat Power Roll (add \$555 for industrial motor)	\$840.00
24" Throat Deluxe Kit SALE!	\$1,333.75
(includes 5/16" round bead, 1/16" step, and spoiler rolls, rolling stand, roll holder, and depth stop)	
36" Throat Power Roll (add \$530 for industrial motor)	\$995.00
36" Throat Deluxe Kit SALE!	\$1,484.10
42" Throat Power Roll	\$1,195.00



JAMEY JORDAN SERIES BEAD ROLLERS

Finance as low as
\$59.00 / Month

- The Jamey Jordan Signature Series Bead Roller by Mittler Brothers is perfect for custom built sheet metal panels in street rods, aircraft restorations, and race cars.
 - These machines feature an adjustable upper shaft for greater flexibility with bead profiles, ideal for special effects in metal art.
 - Variable speed foot pedal control, and reversible 110 volt motor
 - Capacity is rated for 16 gauge steel and .060 inch aluminum
 - Options include rolling pedestal, adjustable depth stop, and work table.
- Throat Depth (inches): 24" and 36" Throat Height (inches): 1-1/8"
- 24" Construction: billet aluminum 36" Construction: fabricated steel



24" Aluminum Power Bead Roller (add \$645 for industrial motor)	\$950.00
24" Aluminum Power Bead Roller Deluxe Kit SALE!	\$2,165.00
36" Power Bead Roller (add \$555 for industrial motor)	\$1,195.00
36" Power Bead Roller Deluxe Kit SALE!	\$2,295.00
Work Table for Mittler Bros. Bead Roller	\$225.00
Art Roll Kit (includes: Art Roll, Solid Roll, Solid Groove Roll, and Universal Groove Roll) ..	\$225.00
Art of bead Rolling DVD Vol. 1 (By Jamey Jordan, 35min)	\$25.00
Art of bead Rolling DVD Vol. 2 (By Jamey Jordan, 35min)	\$30.00



TOLL FREE ORDER LINE 1-877-826-7268 OR 641-628-3860

BEAD ROLLS



1/8"-1" Round Bead



1/8"-1" Flat Bead



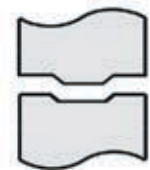
1/8"-1" Round Edge Bead



1/16"-1/4" Step Roll



45 degree Step Roll



45 degree Bead Roll



Full Radius Tank Roll



Tank Roll



Spoiler Roll



Body Line



Shear Roll



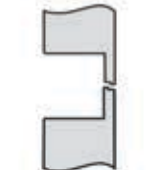
1/8" Pin Stripe



Louver Line



Fender Flare



Art Pattern Roll



30 degree Angle Roll



1/2" Angle Roll 90 degree



Tipping Roll

JAMEY JORDAN ART ROLLS



Stitch



Soft Step



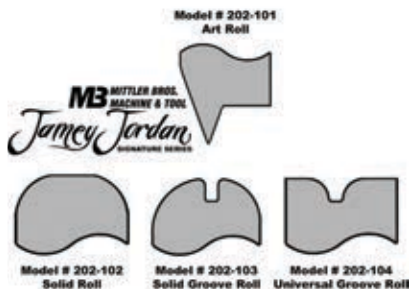
Radius Step



45 degree Step



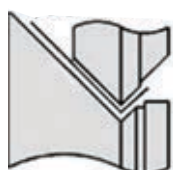
Radius Roll



- These specialty art rolls were developed by metal artist Jamey Jordan to accomplish amazing designs and shapes in aluminum.
- The four included rolls feature nylon lower rolls and a steel upper art roll for creating works of art on sheet metal using a Mittler Brothers bead roller.
- These rolls will work with any standard height Mittler bead roller, but work best on the Jamey Jordan Series bead rollers with an adjustable upper shaft.

Jamey Jordan Art Roll Set\$225.00

HEM ROLLS



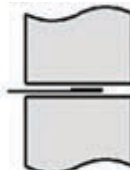
Step 1

Metal is formed 90°



Step 2

Metal is formed 140°



Step 3

Metal is rolled flat

Hem Roll Set

- Make edges on rounded wheel-well openings as well as straight edges stronger, safer and more professional.
- This easy, three-step process creates hem rolls approximately 1/4" deep on steel or aluminum up to .040"
- All rolls are heat-treated for lifetime service.

\$175.00

BEAD FORM FOR TUBING

- Bead Form quickly forms pressure hose beads on all types of tubing and is great for fuel and radiator lines.
- Works on steel, aluminum, copper, or brass
- The hand crank can be removed and replaced with a ratchet and 1/4 inch square socket and can be vice or bench mounted with the included bracket.
- Bead Form also comes in its very own carrying case
- Electric upgrade option is available



Bead Form Jr (5/16"–1/2" OD, designed for .028" wall tubing, produces a bead approximately .025" tall) \$529.00
Bead Form I HD (5/8"–2" OD, designed for .050" wall tubing, produces a bead approx. .050" tall x .185" wide) \$489.00
Bead Form II HD (1-1/2"–4" OD, designed for .050" wall tubing, produces a bead approx. .080" tall x .270" wide) \$489.00
Bead Form III HD (1-1/2"–4" OD, designed for .065" wall tubing, produces a bead approx. .080" tall x .270" wide) \$579.00

BEAD FORM ELECTRIC

Finance as low as \$52.00 / Month

- Features a high quality 1/6 hp gear motor with foot pedal control

Model No.	Minimum ID	Steel Cap.	Aluminum Cap.	Stainless Cap.
BF1HDE	9/16"	.050" Wall	.050" Wall	.050" Wall
BF2HDE	5/8"	.065" Wall	.065" Wall	.050" Wall
BF3E	5/8"	.065" Wall	.065" Wall	.065" Wall



Bead Form Electric Upgrade (utilize your existing bead form tool) \$1,295.00
Electric Bead Form I HD (5/8"–2" OD) \$1,894.00
Electric Bead Form II HD (1-1/2"–4" OD) \$1,894.00
Electric Bead Form III HD (1-1/2"–4" OD, for .065" material) \$1,894.00



HUTH

EXPANDER/SWAGER



Finance as low as \$128.00 / Month

- Tubing expanding capacity is from 1 inch up to 5-1/2 inch ID
- Tube swaging, reducing, and flaring capacity is up to 3 inch OD
- Includes collet holder for 1 inch up to 2-1/2 inch OD tubing, and adjustable collar for expanding 1 inch to 3-1/2 inch tube
- Powerful 5 hp motor, 240v 1 ph (30 amp), or 3 ph (20 amp)
- Portable design includes heavy duty wheels and front swivel caster with brake
- Great for end forming mild steel, aluminum, stainless steel, black pipe, and tubing
- This tubing expander / steel pipe reducer has 25,000 lbs. of expanding power
- Automatic preset expanding system allows precise expanding every time
- Made in the U.S.A.



1673 Expander/Reducer/Swager SALE! \$4,226.50

HUTH

MITEY MATE JR.



- The Mitey Mate Jr is an air powered offspring of Huth's larger 1673 expanding unit.
- Operates off of 80-120 psi of shop air and will produce 17,000 lbs of expanding force.
- Expanding tubing is easy with Huth's Accu-Sizer system, for perfect expansions every time.
- Includes tooling to expand 1-1/2 inch to 2-1/2 inch .065 inch tubing.

Mitey Mate Jr Portable Expander SALE! \$1,250.20

JMR

TUBE NOTCHER



TN1000



Scan for Video

- The JMR Tubing and Pipe Notcher is the highest quality hole saw notcher on the market.
- It is manufactured from bar stock, not plate, to increase strength and has a 1.125 inch induction hardened shaft.
- The TN1000 tube notcher also features a 210 degree range of notch, allowing the fabricator to make a wide variety of notches and has a maximum capacity of 2-1/2 inch OD.
- Angle changes can be made easy due to a Timken™ thrust bearing at the pivot point to increase clamping force while reducing wrench pressure.

TN1000 High Capacity Hole Saw Tubing Notcher \$595.00
TN1000 Hole Saw Tubing Notcher Deluxe Kit (includes floor pedestal, hole saw kit, and notching lube) **SALE!** ... \$749.00
TN1000 Vise Mounting Block (use for mounting in a vise or making your own stand, comes w/ mounting bolts) ... \$19.99

JMR

RACELINE NOTCHER

- The RaceLine Tubing and Pipe Notcher by JMR is designed for the fabricator on a budget, who is looking for a precision made, quality, and fully functional hole saw notcher.
- The notcher is constructed from CNC machined billet aluminum, with heavy duty 1 inch thick arms, and sealed needle bearings to support the 1 inch OD shaft.
- The notcher features 3 inch OD capacity, and can notch anywhere in a 210 degree arc around the end of the tube.
- Offset notches up to 1 inch can also be performed with ease.



Scan for Video

TN300 RaceLine Hole Saw Tube Notcher \$329.00

BAILEIGH

TUBING NOTCHER



TN-250

- The TN-250 tubing notcher is one of the most versatile hole saw notchers on the market today.
- The unique radial vise clamping system allows for clamping tubing from 1 to 2.5 inch OD in any location, including the center of a bend.
- Hole saws are supported on a massive 1-1/4 inch OD shaft, which also includes a replaceable hex insert for attaching to a standard 1/2 inch drive drill.
- Sealed needle bearing shaft supports allow for smooth operation
- 1 inch offset notches can be performed by raising or lowering the cutter assembly.
- Easy mounting: Bolt or clamp it to a table or simply clamp it in a vise
- 230 degree of angle adjustment



Scan for Video

TN-250 Tubing Notcher \$595.00
TN-250 Tubing Notcher Deluxe Kit (includes floor pedestal, hole saw kit, and notching lube) **SALE!** \$749.00

PRO-TOOLS

TUBING NOTCHER

- Built around a heavy duty 1/2 inch thick aluminum base plate with a 1 inch diameter shaft supported on sealed ball bearings, this is one heavy-duty notcher!
- This Pro-Tools notcher will handle 3/4 inch through 2 inch diameter tubing at angles up to 60 degrees, and uses regular bi-metal hole saws.
- The HS-501i can be used in a drill press or attached to a table and used with a standard 1/2 inch drive hand drill.
- This tube and pipe notcher also has an adjustable vise for offset notches.



HSN-501i Hole Saw Tube Notcher \$239.95

MITTLER BROS. TUBING NOTCHER

Finance as low as
\$124.00 / Month

- The MB Ultimate Tubing Notcher has been a favorite in fabrication shops for many years.
- Operation is simple; just clamp your tube in the calibrated swivel vise that allows for accurate and repeatable positioning at any angle and a compound feed table advances tubing into the milling cutter, producing a perfect notch and a perfect fit—every time.
- Extreme angles can be achieved because of the swiveling vise and the finished notch requires very little cleanup or deburring.

Standard Ultimate Tubing Notcher (max capacity 3/4" to 2" tubing, 110v)	\$4,495.00
Variable Speed Ultimate Tubing Notcher (max capacity 3/4" to 2" tubing, 110v)	\$4,995.00
Double Sided Variable Speed Ultimate Tubing Notcher (max capacity 3/4" to 2" tubing, 110v)	\$5,995.00
Offset Vise Option (allows offset notching of tubes)	\$325.00
Upgrade Vise Option (allows notching of tubes up to 2-3/8" OD)	\$300.00
Ultimate Tubing Notcher Stand (cabinet provides space for safe storage of spare cutters)	\$375.00

**V-Block Vise Design
Means Minimum
Set-up Time**

1 HP Standard
(1.5 HP Variable
Speed Optional)

115v Operation
(220v Optional)

Rugged Construction 350 lbs.



Scan for Video

**Calibrated Swivel Vise Allows
ANY Angle Setting. Does NOT Clog with Chips!**

**Lifetime
Sealed Bearings**

**Don't Be Fooled
By Look Alikes!**

**130 RPM Standard
75-250 RPM
Variable Speed**

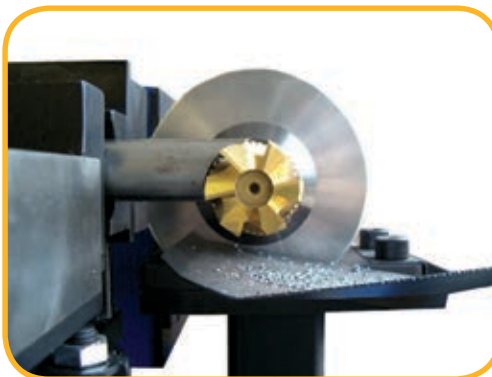
**End Mill Design Allows
Fast Metal Removal**

**Notches up to 2-1/2"
Diameter Tubing**

End Mill Cutters - 1-1/4" Shank

Tubing	Pipe Size	Tin Coated
2-3/8"	2"	\$653.44
2"		\$345.31
1.90"	1-1/2"	\$345.31
1-3/4"		\$324.06
1.66"	1-1/4"	\$313.44
1-5/8"		\$292.19
1-1/2"		\$228.44
1-3/8"		\$265.63
1-1/4"	1"	\$191.25
1-1/8"		\$170.00
1"		\$132.81
1"	High Helix	\$175.00
7/8"		\$116.88
7/8"	High Helix	\$160.00
3/4"		\$85.00
3/4"	High Helix	\$120.00

* Adapter Bushings \$55.00 Each



Offset Vise



Rolling Stand

*(Requires 1" Bushing)
*(Requires 1" Bushing)
*(Requires 1" Bushing)
*(Requires 3/4" Bushing)
*(Requires 3/4" Bushing)
*(Requires 3/4" Bushing)
*(Requires 3/4" Bushing)

BAILEIGH

TUBING NOTCHER



Finance as low as \$220.00 / Month

- Create perfect weld joints in chrome moly, mild steel, stainless steel, and aluminum pipe or tubing with outside diameters of 1 to 3 inch.
- Does not contaminate the weld joint, offering more strength in the weld.
- With unmatched versatility and mobility, the TN-800 pipe notcher is capable of notching up to 60 degree in either direction.
- Cross slide table, angle vise, and V-Jaws can be independently calibrated allowing accurate positioning of straight, angled, or offset notches.
- Quick changeover for different diameters of tube
- Ruggedly built stand with large wheels and casters allows for easy mobility.

TN-800 Tubing Notcher (110v, 1 ph, 15 amp) \$7,995.00



Scan for Video

FEIN

ABRASIVE NOTCHER



GX75

Finance as low as \$38.00 / Month

- The Grit GX75 Dual Speed Belt Grinder is the basis for the GX module system.
- Featuring a 3 x 79 inch belt, 3 x 16.5 inch grinding surface, and an 8 inch front contact wheel, this grinder offers plenty of grinding space for almost any application.
- Fein also offers two separate modules that make this grinder even more versatile.

GRIT MODULES

- The Grit GXR radius grinding module is the perfect solution for tube and pipe notching.
- By attaching the GXR module onto the GX75 belt grinder, you can convert to the ideal platform for precise radius profiles on pipe and round or square stock.
- Standard features include a quick clamping system, traverse carriage, indexed degree table, and depth stop.
- This machine is for precise notching or coping of profiles in tube or pipe from 5/8 to 3 inches.



GXR



GXC

- The Grit GXC Centerless Grinding System by Fein can create the perfect surface finish on round tubing, with a very simple operation.
- The GXC features high process speeds along with an infinitely adjustable feed rate of the material.
- A variety of abrasives are available in order to achieve the right finish whether you are removing mill scale or creating a satin finish on stainless handrail.
- Two types of rail guides are included, brass for rough surfaces, and nylon for more delicate finishes.

GX75 Belt Grinder (220v 3ph or 440v 3ph, add \$271.00 for 2 speed) **SALE!** \$1,391.00
 GXR Pipe Notching Module **SALE!** \$1,544.00
 GXC Centerless Grinding Module **SALE!** \$1,594.00
 3" x 79" Belts (10 Pack) **SALE!** Starting at: \$81.63

FEIN

DEBURRING MACHINE

Finance as low as \$27.00 / Month

- Grit deburring machine is a great addition to any production line.
- Highly effective for deburring pipe, tube, profiles, and flat materials.
- A variety of deburring brushes are available
- Dust collector connection is available
- Standard machine can be bench mounted to an optional pedestal.

GXE Deburring Machine **SALE** \$1,004.00
 Deburring Machine Stand \$415.00
 Wire Brush for Grit Deburring Machine Starting at \$242.50

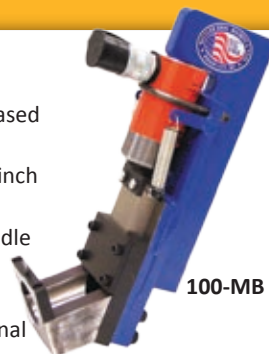


QUALITY TOOLS BACKED BY OUR NO JUNK GUARANTEE

MITTLER BROS. HYDRAULIC NOTCHERS



100-U-MB



100-MB

- The Mittler Brothers Hydraulic Tube Notchers are precision-machined units based on a punch and die design.
- These notchers utilize a ten-ton ram that are capable of notching up to 2-3/8 inch OD tubing and 2 inch Schedule 40 pipe.
- These notchers have a maximum notch angle of 90 degrees and can even handle limited angles when necessary.
- Can be used in a bench vice, fixed stand, or stand with wheels
- Produces a perfect, ready-to-weld notch every time and turns out a professional piece again and again.

100-MB (2 inch OD capacity, Choice of one die) \$749.00
 100-U-MB (2-3/8 inch OD capacity, Choice of one die) \$1,150.00
 Air/Hydraulic Pump, Hose and Fitting \$548.00

IRONWORKER NOTCH TOOLING



- Built to fit in a press or ironworker
- Cutting edges made from A2 and D2 air hardened tool steels
- Requires #1000 series standard housing
- Angle notch units available, call with application
- Larger sizes available as well as punching, slotting or shearing

1000-PTD Notcher Housing (accepts up to 2-1/2" OD) \$265.00
 1001-PTD Notcher Housing (accepts 2-5/8" - 3-1/2" OD) \$930.00
 1000 Series Punches and Dies (one set required for each OD) Starting at: \$423.00 ea.

PIPEMASTER CONTOUR GAUGES

- PipeMasters are the perfect companion to any of our notchers and will easily pay for themselves when fitting tube or pipe together.
- The steel pins contour to the shape desired which can be transferred to the work piece.
- Individual sizes will slip over the tube with a .020 inch clearance or can be used free hand.
- These time savers take away the stress of making complicated notches for your tubular project.



P/N	Tube Size	Price
PT075	3/4"	\$40.00
PT0875	7/8"	\$41.00
PT100	1"	\$42.00
PT1125	1-1/8"	\$43.00
PT125	1-1/4"	\$44.00
PT1375	1-3/8"	\$49.00
PT150	1-1/2"	\$49.00
P125	1-5/8"	\$49.00
PT175	1-3/4"	\$54.00
PT200	2"	\$56.00
PT250	2-1/2"	\$128.00

Call for sizes not shown

P/N	Nominal Pipe Size	Pipe OD	Price
P100	1"	1.315"	\$43.00
P125	1-1/4"	1.660"	\$49.00
P150	1-1/2"	1.900"	\$56.00
P200	2"	2.375"	\$57.00
P250	2-1/2"	2.875"	\$110.00
P300	3"	3.500"	\$115.00
P400	4"	4.500"	\$172.00
P500	5"	5.563"	\$190.00
P600	6"	6.625"	\$292.00



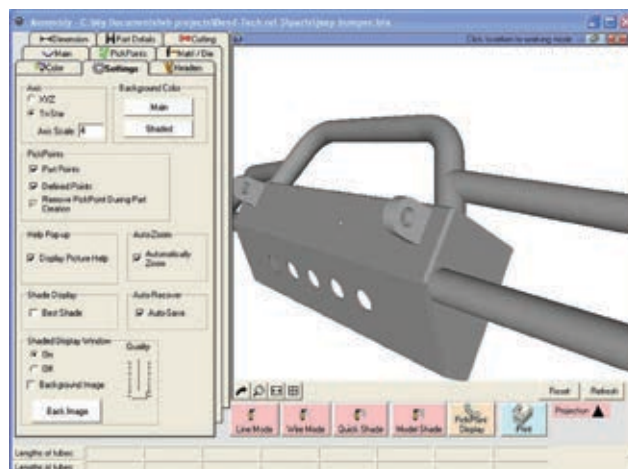
Scan for Video

P-SC PipeMaster Stock Car Kit (1-1/2", 1-3/4") \$103.00
 P-TJ PipeMaster Truck & Jeep Kit (1-3/4", 2") \$110.00
 P-DR PipeMaster Dragster Kit (1-1/2", 1-5/8") \$98.00
 P-PRKit PipeMaster Pro Racer Kit (1", 1-1/4", 1-1/2", 1-3/4", 2") \$245.00
 PT-2Kit PipeMaster Master Builder Kit (11 sizes, 1/8" increments, 3/4"-2" OD) \$553.00
 P-1Kit Nominal Pipe Size Kit (1", 1-1/4", 1-1/2", 2" pipe) \$205.00

BEND-TECH

SHEET METAL SOFTWARE

- **Bend-Tech Sheet Metal** is used for designing sheet metal parts and assemblies.
- This software approaches sheet metal design from an easy to understand 2D perspective, however final product models are presented in full 3D for review.
- Customers who have never used a CAD system before are productive the first time they sit down to use it.
- **Bend-Tech Plate Templates Motorsports Edition (MSP)** is a set of templates designed for the Motorsports industry which includes common washers, tabs, gussets, beadlocks, and mounts.
- With customizable dimensioning, you can pick the style of bracket or tab you are looking for and make it the perfect fit for your unique fabrication project.

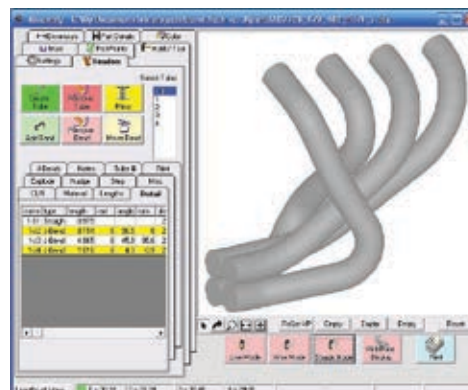
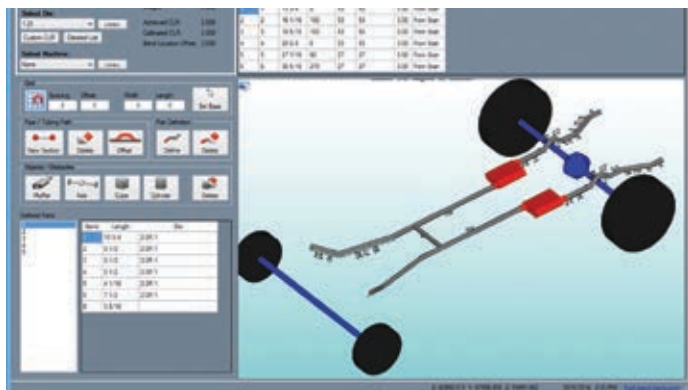


Bend-Tech Sheet Metal Software \$295.00
 Bend-Tech Plate Template Software **SALE!** \$149.00

BEND-TECH

EXHAUST SOFTWARE

- **Bend-Tech HD** is a software tool that removes the trial and error from tube header manufacturing and allows any user to be able to design their own tube headers in minutes.
- Bend-Tech HD provides detailed step-by-step instructions where to cut and rotate each tubular segment.
- Bend-Tech HD is the only product in the world to help you design custom tube headers and break it down to fabrication instructions to use pre-bent mandrel tubing.
- **Bend-Tech Exhaust Design** Software gives you the ability to model critical components of a vehicle (axles, mufflers, gas tanks, etc.), to properly design the exhaust tubing around obstructions.
- Create multiple bends and straight lengths in one part and obtain the cutting and bending instructions to build your creation.



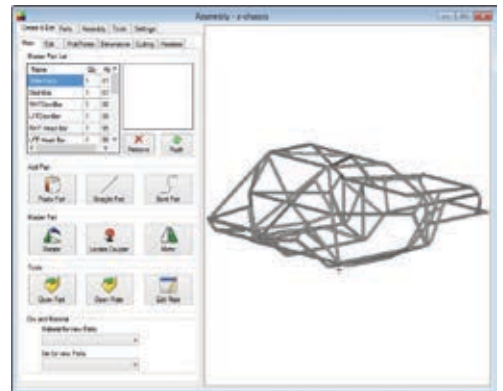
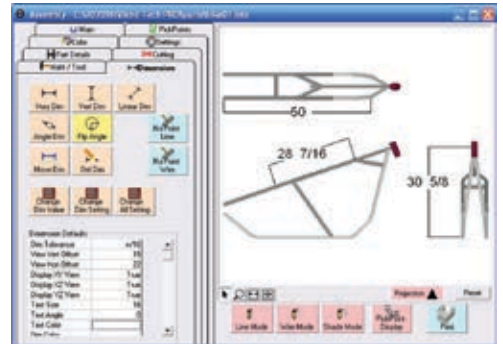
Bend-Tech Header Design Software \$295.00
 Bend-Tech Exhaust Design Software \$295.00

BEND-TECH

TUBE BENDING SOFTWARE

- Bend-Tech offers tube bending software solutions for everyone from the hobbyist to the professional fabricator.
- Using the finished part dimensions, this software calculates how long to cut your tube as well as where to start each bend regardless of your bender type, saving you hours of calculating and reduce wasted material.
- Each version contains several common templates for nearly any application.
- With Bend-Tech SE, users have the option of sketch mode for drawing custom parts as well as X, Y, Z dimensional input.
- You can even view and rotate a three dimensional model of the finished part and watch a simulation of how it will bend on your specific bender.

Features	EZ	EZ-3D	PRO	SE
Designer: Templates Designer: Custom Part 2D Material and Die Libraries Basic Calculation Output Post Bending Cutoff	✓	✓	✓	✓
Designer: Custom Part 3D Rotational Calculations Bend Order Manipulation Bending Simulation		✓	✓	✓
Designer: Assembly Design Dimensioning Profile Cutting (fish-mouthing, coping & mitering) Spring Back Calculator			✓	✓
Designer: XYZ Designer: Reverse Engineering STEP & IGES import/export Advanced Calculation Output Unit Conversion Manufacturability Checking Multiple Dies for Single Part Large Radius Bending (including crowning) Extended Tooling Library Definitions Railing Module Output DXF file of cutting profile				✓
Bend Limit (per part)	6	6	10	100



Bend-Tech EZ	\$69.00
Bend-Tech EZ 3D	\$149.00
Bend-Tech Pro	\$295.00
Bend-Tech SE	\$599.00

Optional modules operate inside Bend-Tech Pro and SE programs.

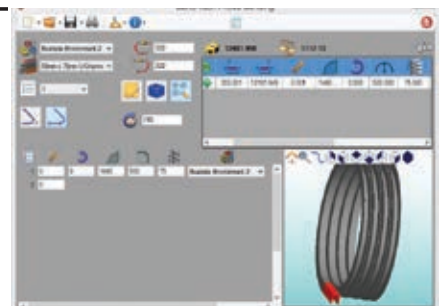
Sheet Metal Module (design sheet metal parts and assemblies) SALE!	\$75.00
Plate Template Module (common motorsports tabs and brackets) SALE!	\$75.00
Header Design Module (design your own exhaust headers) SALE!	\$75.00
Exhaust Design Module (design full exhaust systems around obstructions) SALE!	\$75.00
Handrail Design Module (design handrails around walls and stairs)	\$400.00
SolidWorks Design Module (take a designed tube from SolidWorks and import directly into Bend-Tech)	\$400.00

BEND-TECH

ROLL BENDING SOFTWARE

- Bend-Tech Profile Bending (PB) software has been designed to work with bending machines often referred to as section, large radius, profile or roll bending machines.
- The software will help with the bending of any material profile, even allowing custom profiles to be created by the user.
- Bend-Tech PB software is capable of showing your material cut length, the start and end of bend zones, and gives you an animated graphical representation of a part as it is being created.

Bend-Tech PB (for Roll Bending)..... \$599.00



JMR

MANUAL TUBE BENDERS

- JMR Tube Benders are built with heavy duty material and are sold at an economical price, making them perfect for DIY fabricators or small shop environments.
- Basic and Ultra machines feature a military grade tough-coat finish, heat treated 4140 steel pins, and multiple bending speeds.
- These machines provide enough leverage to bend up to 2 inch round tube by hand, but can also be upgraded to hydraulics for even faster bending.
- Dies are sold separately and available for round and square tubing well as nominal pipe sizes (NPS).



TBM-250R

TBM-250R RaceLine Tubing Bender (uncoated, includes steel degree ring and pointer)	\$295.00
TBM-250 Basic Tubing Bender (includes steel degree ring and pointer)	\$395.00
TBM-250U Ultra Tubing Bender (includes handle, billet aluminum degree ring, and pointer)	\$595.00
Air/ Hydraulic Conversion Kit for JMR Benders	\$795.00

PRO-TOOLS TUBE BENDER



Hydraulic
Deluxe Model

- Pro-Tools Model 105HD Tube Bender features 5/8 inch thick main frame arms and easily bends up to 2 inch OD material by hand.
- Popular for building rock-crawlers, buggies, and many other projects
- Graphite impregnated bushings in the ratchet handle and steel bushings at the main die pivot to reduce friction and eliminate wear.
- Dies are sold separately and available for round and square tubing and nominal pipe sizes (NPS).



MB-105HD



Scan for Video

MB-105HD Manual Tubing Bender (includes steel degree ring and pointer) SALE!	\$299.00
MB-105HD Manual Tubing Bender Deluxe Kit (includes floor pedestal, degree ring and handle) SALE!	\$449.00
MB-105HD Hydraulic Tubing Bender Deluxe Kit (includes rolling pedestal, degree ring, and air/hydraulic package) SALE!	\$1,499.95

JMR

AIR/HYDRAULIC BENDERS

- The JMR TBAH-250 air/hydraulic tube bender is a precision machined unit that offers large capacity, a fast hydraulic system, and unique portability.
- Features nylon/graphite bushings at the pivot points, military grade tough-coat finish, and lifetime warranty billet steel die sets.
- The JMR air/hydraulic pump is easily operated with a foot pedal control and 80-100 psi of air pressure and features a powered cylinder return for faster cycle times and more repeatable zero point.
- Dies are sold separately and available for round and square tubing and nominal pipe sizes (NPS).

TBAH-250 Air/Hydraulic Tubing Bender (includes hydraulic cylinder and pump)	\$995.00
TBAH-250 Air/Hydraulic Deluxe Kit (includes pedestal, degree ring, hydraulics) SALE!	\$1,269.00



Deluxe Model Shown

Finance as low as \$35.00 / Month

Finance as low as \$40.00 / Month

PRO-TOOLS

HYDRAULIC TUBE BENDER



Scan for Video

- The Pro-Tools HB302 is a hydraulic bender designed to bend to 90 degrees in one stroke of the cylinder and can be powered with either an air/hydraulic or electric/hydraulic pump (not included).
- The sliding aluminum follow bar will not scratch or mar pre-finished tubing like stainless and aluminum, which makes this a great machine for handrail work.
- The HB-302s 15 ton hydraulic ram allows this tubing bender to bend up to 2 inch OD material.
- Dies are sold separately and available for round and square tubing and nominal pipe sizes (NPS).

HB-302 One Shot Hydraulic Bender (includes cylinder, no pump)	\$1,463.00
HB-302 One Shot Air/Hydraulic Deluxe Kit (includes rolling pedestal, hydraulics)	\$2,127.00

FOLLOW US ON SOCIAL MEDIA:



JMR

POWERED TUBE BENDERS

TBH-250



Finance as low as
\$82.00 / Month

- The TBH-250U and TB-1000 feature electric/hydraulic power which will operate at approximately 3 times the speed of air/hydraulic power.
- JMR hydraulic benders feature a powered cylinder return for faster cycle times and more consistent zero point for bending accuracy.
- Optional, is a longer cylinder which can perform a 90 degree bend in one stroke!
- Dies are available for round and square tubing as well as nominal pipe sizes (NPS).
- Mild Steel Capacity: 2-1/2" x .120" • 2" schedule 40 nominal pipe capacity
- Dies sold separately
- 110v

TBH-250 Electric/Hydraulic Bender (add \$200 for 90° cylinder) \$2,995.00

TB-1000 Electric/Hydraulic Bender (add \$200 for 90° cylinder) \$1,995.00

TB-1000



Finance as low as
\$55.00 / Month

JMR

METAL FAB STATION

Finance as low as
\$96.00 / Month

- The JMR Fab Station features a 36 x 48 inch slotted steel top surface that accepts threaded T-nuts, just like a drill press or mill would use, for maximum flexibility in workpiece holding.
- The unique receiver hitch style framework beneath the table's surface is intended to mount accessories such as a tubing bender, notcher, bench grinder, vise, or whatever you can dream up.
- Adjustable height mounts allow you to use the table to fixture parts and track tube rotation when bending or notching.

Slotted Fabrication Table \$1,295.00

Fabrication Station (includes: table, tube bender, and tube notcher) **SALE!** \$3,495.00



JMR

TUBE BENDER DIES

These JMR RaceLine Series dies fit all JMR tubing benders and come in several profiles to bend round tubing in mild steel, stainless steel, DOM, 4130 chrome moly and more. These feature an alloy one piece counter-bend die to reduce galling on the tube. If you are unsure of which die you need, please feel free to contact us and we will guide you through the process.

Part No.	Material Size	Center Line Radius	Minimum Wall Thickness	Maximum Degree of Bend	Price
1203100R	1"	3"	.065"	110°	\$115.00
2403100R	1"	3"	.065"	180°	\$155.00
1204125R	1-1/4" (1.250)	4"	.065"	110°	\$195.00
2404125R	1-1/4" (1.250)	4"	.065"	180°	\$245.00
1205150R	1-1/2" (1.500)	5"	.083"	110°	\$225.00
2405150R	1-1/2" (1.500)	5"	.083"	180°	\$285.00
1206150R	1-1/2" (1.500)	6"	.065"	110°	\$235.00
2406150R	1-1/2" (1.500)	6"	.065"	180°	\$305.00
12061625R	1-5/8" (1.625)	6"	.083"	110°	\$255.00
24061625R	1-5/8" (1.625)	6"	.083"	180°	\$315.00
1205175R	1-3/4" (1.750)	5"	.120"	110°	\$235.00
2405175R	1-3/4" (1.750)	5"	.120"	180°	\$310.00
1206175R	1-3/4" (1.750)	6"	.083"	110°	\$250.00
2406175R	1-3/4" (1.750)	6"	.083"	180°	\$325.00
1207200R	2"	7"	.095"	110°	\$325.00
2407200R	2"	7"	.095"	180°	\$410.00

TOLL FREE ORDER LINE 1-877-826-7268 OR 641-628-3860

BAILEIGH

RDB-125 TUBE BENDER

- The RDB-125 tubing and pipe bender is the perfect entry level Baileigh/RMD bender.
- This tubing bender features big capacity for the money, capable of bending 2.5 inch round tube or 2 inch schedule 40 pipe.
- It also features a quick release counter-bend die for easy positioning/removal of the tubing.
- Using a single hydraulic cylinder, the machine is capable of 180 degree of bend without any repositioning of the tooling.
- The industrial grade hydraulics and heavy steel construction mean this machine is built to withstand tough industrial jobs.
- The tooling used on this machine is the same as that used on larger machines in the Baileigh line-up, so future upgrades can be done easily and cost effectively.

RDB-125 Bender (110v)\$4,695.00



BAILEIGH

RDB-175 TUBE BENDER



- The RDB-175 tube and pipe bender features a new programmable bend interface, foot pedal controls, quick tooling changes and a large 2-1/2 inch OD bending capacity.
- The RDB-175 is very fast; with a unique dual hydraulic ram design it can make 180 degree bends in as little as 12 seconds.
- With tooling available for round, pipe, and square materials the RDB-175 is one of the most flexible, fast, and repeatable benders on the market today.
- It also features a quick release counter-bend die for easy positioning/removal of the tubing.
- No tooling required to change forming and pressure dies

- 2-1/2" round .125" wall mild steel capacity
- 2" round .120" wall chrome moly capacity
- 2" schedule 40 pipe capacity
- 2" square .125" wall mild steel capacity
- 9" CLR maximum
- 110v

RDB-175 Bender (110v)\$7,295.00



Scan for Video

BAILEIGH

RDB-250 TUBE BENDER

- The RDB-250 tubing bender is a programmable control machine that allows up to 170 programs with 10 bends per program.
- All bend data, including bend angle, speed, and quantities, as well as length and rotational stops, can be stored in the memory.
- Optional indexing tables give repeatability for both rotation points and length measurements between bends.
- This rotary draw tube bender can bend at speeds up to 9 seconds for a 180 degree bend and can be programmed to bend up to 360 degree, great for solid rod applications.
- The counter die positioner has a numerical counter so repositioning of the counter die is a breeze when recalling bend programs.
- Dies are sold separately and available for round and square tubing well as nominal pipe sizes.
- Made in the U.S.A.

- 2-1/2" OD .125" wall mild steel capacity
- 2" schedule 40 pipe capacity
- 2" square .125" wall mild steel capacity
- 9" CLR maximum
- Optional positioning table
- No tools required for die changes
- Bends pipe, round & square tubing
- On casters for portability
- 220v 1 ph

RDB-250 Bender (220v 1 ph)\$10,495.00

Index Table for RDB-250 Tubing Bender (10 ft table)\$4,095.00



Scan for Video



Shown with optional IDX table





Finance as low as
\$430.00 / Month



BAILEIGH

RDB-325 TUBE BENDER

- The RDB-325 tubing bender is a programmable control machine that can bend up to 3 inch tubing and 2 inch Schedule 80 Pipe.
- This programmable controlled tubing bender allows up to 170 programs with 10 bends per program.
- Optional indexing tables give repeatability for both rotation points and length measurements between bends.
- This rotary draw tube bender can bend at speeds up to 10 seconds for a 180° bend and can be programmed to bend up to 360°, great for solid rod applications.
- The counter die positioner has a numerical counter so repositioning of the counter die is a breeze when recalling bend programs.
- Dies are sold separately and available for round and square tubing well as nominal pipe sizes (NPS).

- 3" OD .095" wall mild steel capacity
- 2" schedule 80 pipe capacity
- 2" square .188" wall mild steel capacity
- 16.5" CLR maximum
- Optional positioning table

- No tools required for die changes
- Bends pipe, round & square tubing
- On casters for portability
- 220v 1 ph



RDB-325 Bender (220v 1 ph) \$15,595.00
Index Table for RDB-325 Tubing Bender (10 ft table) \$4,095.00

BAILEIGH

BENDER DIE PACKAGES

- These Baileigh die packages will help you save money and get you underway on your next bending project.
- These kits are put together for specific projects ranging from handrails to chassis fabrication and are available for bending round, square, and pipe.
- Baileigh dies can be used to bend the specified size in mild steel, stainless steel, DOM, 4130 chrome moly and more.
- Die kits will fit all Baileigh tube benders except the RDB-050.



RT-1B Tubing Kit (OD) (includes 3/4" x 2.5R, 7/8" x 3R, 1" x 3R, 1-1/4" x 4R, and 1-1/2" x 5R) \$2,425.00
Racer's Tubing Kit (OD) (includes 1" x 3R, 1-1/4" x 4R, 1-1/2" x 5R, 1-5/8" x 6R, and 1-3/4" x 7R) \$3,375.00
RP-1B Pipe Kit (Nominal Pipe size) (includes 1/2" x 2.5R, 3/4" x 3R, 1" x 3R, 1-1/4" x 4R, 1-1/2" x 5R) \$2,478.00
Handrail Kit (Nominal Pipe size) (includes 1-1/4" x 3R, 1-1/2" x 3.75R) \$968.00
ST-1B Square Kit (OD) (includes 1/2" x 3R, 3/4" x 3.5R, 1" x 4.5R, 1-1/4" x 5.5R, and 1-1/2" x 6.5R) \$4,305.00



PRO-TOOLS

MANUAL ROLL BENDER

- This manual roll bender by Pro-Tools is capable of rolling tube, pipe, channel, flats, and various box tubing and features a sturdy dual side plate design, allowing for surprisingly large material to be bent at a large radius. (Not for rolling circles.)
- Top roll position is adjusted by means of a lever handle and the lower rolls are fixed.
- Bottom rolls can be dropped in quickly, and the top roll is fixed in place using the keyed shaft on the handle.
- Mild Steel Capacity: 2" x .095"
- Round Aluminum Capacity: 2" x .120"
- Nominal PIPE Capacity: 1-1/2" Schedule 40
- Square Mild Steel Capacity: 2" x .083
- Maximum OD: 2"

M3RB Manual Roll Bender \$900.00
Roll Sets \$299.95 ea.

EAGLE POWERED ROLL BENDERS

Finance as low as
\$121.00 / Month



CP20

- Roll Benders are used for bending tube, angle, or shapes into coils, circles or large arcs using a wide variety of materials.
- Simply adjusting the third roll changes the size of the arc or circle.
- A digital read out allows repeatability for production runs and machines come complete with a universal roll set allowing you to build the correct size die for your material.
- Tube sizes require specific rolls for each OD and we have rolls for any application including CNC controlled. Please call for special applications.
- These benders are great for handrail applications, race car bumpers, and ornamental iron work.
- Lower rolls knurled for optimal traction
- Manual or hydraulic adjustment of top roll
- Rugged frame and heavy duty wide base
- Hardened steel shafts
- Horizontal or vertical operation options
- Drive components supported in roller bearings
- Heavy duty adjustable lateral material guides
- Compact, low maintenance design
- Hardened universal standard rolls
- Motor overload protection

Model	Display	Motor	Speed	Weight
CP20	LED	.44 hp	10	240 lbs.
CP30E	Scale	1.25 hp	9	450 lbs.
CP30	LED	1.25 hp	10.5	550 lbs.
Z402	LED	2.25 hp	14	870 lbs.
CP40	LED	2.5 hp	14	1,400 lbs.

Model	Tube	Square	Solid	Angle
CP20	1-1/4" x .065"	3/4" x .065"	1/2"	3/4" x 1/8"
CP30E	2-3/8" x .065"	1-1/2" x .120"	1-1/4"	1-1/2" x 3/16"
CP30	2-3/8" x .065"	1-1/2" x .120"	1-1/4"	1-1/2" x 3/16"
Z402	2-3/4" x .065"	2" x .120"	1-1/4"	1-1/2" x 1/4"
CP40	2-3/4" x .083"	2" x .125"	1-3/8"	2" x 1/4"



CP30-PR

Finance as low as
\$214.00 / Month



CP40-M

Finance as low as
\$369.00 / Month

- CP20 (bench top model, manual adjustment w/ LED, 220v 3 ph) \$4,395.00
- CP520 (hydraulic positioning w/ LED, auto 9 position repeat, 220v 3 ph) \$9,900.00
- CP30-MS (bench top model, manual adjustment w/ LED, , 220v 1 ph) **SALE!** \$5,650.00
- CP30E-PR (includes stand w/ horizontal/vertical operation, manual adjustment w/ scale, foot pedals, 220v 3 ph) (also in 220v 1ph) **SALE!** ..\$5,990.00
- CP30PR-2V (includes stand w/ horizontal/vertical operation, manual adjustment w/ LED, two speed, foot pedals, 220v 3 ph) (also in 220v 1ph) **SALE!** \$7,365.00
- ZM-402 (manual adjustment w/ LED, foot pedal control, 220v 3 ph) \$10,650.00
- ZH-402 (hydraulic adjustment w/ LED, foot pedal control, 220v 3 ph) \$11,450.00
- CP40-M (manual adjustment w/ LED, foot pedal control, 220v 3 ph) \$13,400.00
- CP40-H2 (hydraulic adjustment w/ LED, foot pedal control, 220v 3 ph) \$15,250.00
- CP40-H (hydraulic adjustment w/ LED, 3 driven rolls, foot pedal control, 220v 3 ph) \$17,950.00
- CP60-H (hydraulic adjustment w/ LED, 3 driven rolls, foot pedal control, 220v 3 ph) \$25,250.00



QUALITY TOOLS BACKED BY OUR NO JUNK GUARANTEE

TRICK-TOOLS HAND BENDER

- The HB1 features heavy duty steel construction for bending custom fuel, brake or hydraulic lines or even small diameter chassis tubing up to 5/8 inch OD.
- Quick setup and simple operation make this bender the right choice for light production, repair, and prototype work.
- Each standard die set is reversible for bending three-times or five-times the diameter of the tube radii and the adjustable bend die allows for easy repositioning and removal of the tube.
 - Rugged CNC machined steel construction
 - Replaceable parts for long service life
 - 3D and 5D bends from each die set
 - Adjustable bend die on lead screw
 - Close bend-to-bend distances
 - Simple set up and operation
 - Pedestal or vice mount

HB1KIT (Hand Bender with 1/4" through 5/8" die sets) **\$699.98**
Deluxe HB1kit (Includes HB1 bender kit, 5 die sets, and pedestal w/die rack) .. **\$799.98**



Deluxe Hand Bender Kit



Scan for Video

HUTH EXHAUST BENDERS

Finance as low as
\$169.00 / Month



HB10

2600HD

- Huth benders provide a fast and versatile option for ram bending tubing, pipe and square and are popular with exhaust shops, as well as industrial applications.
- The HB-10 is Huth's entry level bender, designed to introduce you to Huth quality while showing you incredible profit potential with it's standard features.
- Included in the HB-10 package is the model 1600 bender, and tooling for bending and creating joints for exhaust tubing from 1-1/2 to 3 inch OD.
- Not only is this machine capable of bending up to 3 inch OD material, but it can also expand and reduce tubing, and form exhaust ball joints and slip joints.
 - 220v, 1ph or 3ph power options
 - Available tooling packages
 - Industrial quality
 - Expander/Swager included
- The Huth 2600 industrial duty bender is the most powerful bender of its kind and is designed for large diameter or heavy wall applications that cannot be done on conventional machines.
- It offers a knee pedal control, 7.5 hp unit - enough to provide 85,000 lbs of bending force, and a compact control panel.

HB10 Bender with tooling package SALE! **\$7,957.00**
2600HD Industrial bender, less tooling. **\$9,785.50**

BEN PEARSON EXHAUST BENDER

Finance as low as
\$191.00 / Month

- Ben Pearson Model 3012 has a unique tool post design that allows you to make parts with no interference from the hydraulic cylinder.
- The 3012 offers a knee pedal control along with manual and automatic push buttons
- The Smart Automatic Mode features an adjustable return-to-home position control along with a precise and easy to read depth of bend gauge that increases efficiency and ensures fast and easy transitions between multiple bends.
- The included heavy duty end finishing attachment accommodates 1 to 3 inch tubing in the swager box and from 1-1/4 to 4 inch on the expander.
 - 3" OD mild steel capacity
 - 1-1/2" schedule 40 NPS capacity
 - 2-1/2" square mild steel capacity
 - Available tooling packages
 - 220v, 1ph or 3ph power options



Model 3012 (less tooling) SALE! **\$6,940.80**

TRANSFLUID MANDREL BENDERS

- The German made K Series mandrel benders are the highest quality design and built with space and portability in mind.
- These machines offer hydraulic muscle with digital accuracy offering a tolerance of +/- .1 degree.
- With capacity up to 4 inch stainless and bend radii as tight as 1.5 x diameter in their standard configuration, these machines are as versatile as they are economical.
- Optional accessories include mandrel lubrication, length and rotational stops with the Plane of Bend device, and 500 part storage with the SPS touch screen control. Please call our expert sales staff with all of your bending needs.

DB 2060K

- Bends up to 2-3/8" OD x .236" wall thickness mild steel tubing
- Bending angle up to 180.0 degrees plus 10.0 degrees of springback
- Bending head speed 0.0–90.0 degrees: 8 seconds
- Standard load length: 10 feet (extensions available)
- Minimum centerline radius: 1.5D
- Maximum centerline radius: 6 inches (extensions available)

Finance as low as
\$1,595.00 / Month



- Manual or semi automatic operation (with optional SPS control)
 - Programmable controlled mandrel withdrawal
 - Removable shaft for small bend radius
 - Machine weight: approx. 2,200 lbs
 - Great for handrail and heavy wall pipe and tubing
- Prices start at \$41,890.00**

DB 2076K

- Bends up to 3" OD x .109" wall thickness mild steel tubing
 - Stainless steel tubing up to 3" OD x .065" wall thickness
 - Bending angle up to 180.0 degrees plus 10.0 degrees of springback
 - Bending head speed 0.0–90.0: 8 seconds
 - Standard load length: 10 feet (extensions available)
 - Minimum centerline radius: 1.5D
 - Maximum centerline radius: 6 inches (extensions available)
 - Manual or semi automatic operation (with optional SPS control)
 - Includes boosted pressure die and controlled mandrel withdrawal
 - Machine weight: approx. 2,200 lbs
 - Great for automotive exhaust and headers
- Prices start at \$51,990.00**

DB 20101K

- Bends up to 4" OD x 0.134" wall thickness mild steel tubing
 - Stainless steel tubing up to 4" x .078" wall thickness
 - Bending angle up to 180.0 degrees plus 10.0 degrees of springback
 - Bending head speed: 0.0–90.0: 9 seconds
 - Standard load length: 10 feet
 - Minimum centerline radius: 1.5D (optional boosted pressure die for <1.5D)
 - Maximum centerline radius: 7 inches
 - Manual or semi automatic operation (with optional SPS control)
 - Removable shaft for small bend radius
 - Machine weight: approx. 5,500 lbs.
- Prices start at \$97,620.00**

Finance as low as
\$2,966.00 / Month

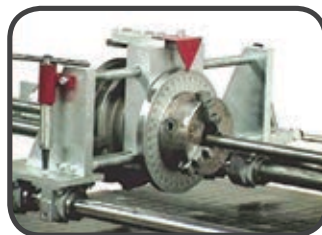


20101K

ACCESSORIES



Mandrel Tooling



Plane of Bend Device



SPS Control



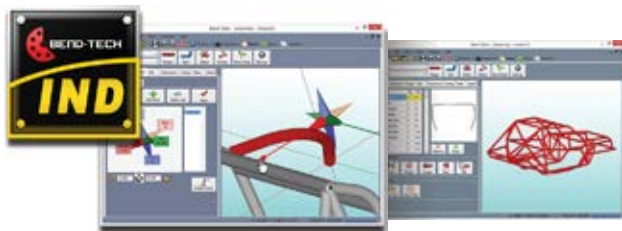
Mandrel Lubrication

CHECK OUT WWW.TRICK-TOOLS.COM FOR 8000+ PRODUCTS

BEND-TECH TUBE CUTTING SYSTEM



Finance as low as
\$411.00 / Month



Bend-Tech INDUSTRIAL: Has the ability to work with your 3D solid model CAD designs. Also includes several tubing designers including our easy-to-use assembly designer.



Bend-Tech Dragon Software: An automated CAM product that understands tubing and will automatically create your cutting, marking and etching paths directly from Bend-Tech Industrial. Bend-Tech Dragon software comes with a nesting ability to allow several parts on the same stock tube.



Plasma cutting: Cuts end profiles, holes, and other contours.



Tool changer: Machine will switch between marker/etcher/plasma/laser pointer automatically depending on your intended tasks.



Tube marking/etching: Bend-Tech Dragon obtains the bending information from the Bend-Tech Industrial software to automatically mark and etch bend angle labels, bend locations and rotations.

Machine Length:

BTD-A148: 148"

(126" of travel in 1 position / unlimited when re-positioned)

BTD-A296: 296"

(270" of travel in 1 position / unlimited when re-positioned)

Tube Size:

0.75" - 3" Diameter (up to 2" using pass through ability of chuck)

Tube Weight:

150lbs maximum

Speed of Cutting:

Varies by material. (.120 wall cuts at 190" per minute)

Plasma torch:

Not included

- Bend-Tech Dragon is a complete solution for tube cutting, etching, and marking combined with the world's most powerful software for tube design and manufacturing.
- Dragon will plasma cut your end profiles, holes, and contours.
- Bend-Tech Dragon will also mark or etch your bending information; including bend angle labeling, bend location line-up marking, and bend rotation line-up marking.
- Dragon can also mark your weldment fit-up locations
- A pass through chuck feeds the tubing and allows for pieces that are longer than the machine to be manufactured.
- The support yoke is designed to guide the tubing even if the material stock is not perfectly straight.
- The easy to understand control panel is built with LED lights to tell the operator exactly what the machine is doing and is designed for the most novice of machine operators.

BTD-A148 (148" table)	\$14,900.00
BTD-A296 (296" table)	\$17,900.00

TORCHMATE

CNC PLASMA TABLES

- The Torchmate 2 x 2, 2 x 4, and 4 x 4 CNC plasma tables are designed to bring CNC cutting capabilities to garage enthusiasts, schools, or small fabrication shops.
- With a small footprint, the system brings CNC technology down to a size that will fit in almost any environment.
- The system is compatible with most plasma cutters and the driver software will accept any .DXF file or G-code.
- With a cutting rate of up to 150 ipm and a resolution of approximately .0006 inches the Torchmate system delivers speed and accuracy previously available to only the largest fabrication shops.
- Torchmate also offers its CAD Lite design software capable of laying out shapes for cutting and exporting the files to the driver software.
- A water table is available to trap dust and sparks created during the cutting process.
- Secondary tooling can be mounted for CNC routing, drilling, milling, and even engraving.

2X2 DELUXE TABLE

- 2' x 2', 2' x 4', or 4' x 4' cutting area
- 13 inch cutting depth (tool dependent)
- 150 ipm cut speed, 200 ipm traverse speed
- Approximately .0006 inch resolution

Computer Requirements

- Windows XP / Vista / Windows 7
- 1 GB processor
- 1 GB ram
- 30 GB hard drive



Finance as low as
\$287.00 / Month



Scan for Video



Finance as low as
\$369.00 / Month

4X4 DELUXE TABLE

- Footprint: 39" x 39" (2' x 2') & 39" x 63" (2' x 4') & 60" x 60" (4' x 4')
- 2 x-axis drive motors and 1 y-axis drive motor
- 2 amp micro-stepping stepper motors
- PC based controls with USB interface
- 5 piece fabricated steel construction
- 110v 15 amp power
- Available with or without water table
- Available with or without Torchmate CADLite design software

Torchmate 2 x 2 CNC Plasma Deluxe Kit	\$7,761.58
(Includes: 2 x 2 CNC Plasma System, 2 x 2 Water Table, CAD and driver software, and arc voltage height control with machine torch holder) Just add plasma and computer!	
Torchmate 2 x 2 CNC Plasma System	\$5,821.28
(Includes: gantry, 2 sides, extruded aluminum rails, hardware, tool mounting bracket, electronics box, cables, driver software, and arc voltage height control with machine torch holder).	
Torchmate 2 x 4 CNC Plasma Deluxe Kit	\$9,340.98
(Includes: 2 x 4 CNC Plasma System, 2 x 4 Water Table, CAD and driver software, and arc voltage height control with machine torch holder) Just add plasma and computer!	
Torchmate 2 x 4 CNC Plasma System	\$6,866.53
(Includes: gantry, 2 sides, extruded aluminum rails, hardware, tool mounting bracket, electronics box, cables, driver software, and arc voltage height control with machine torch holder)	
Torchmate 4 x 4 CNC Plasma Deluxe Kit	\$10,728.04
(Includes 4 x 4 CNC Plasma System, 4 x 4 Water Table, CAD and driver software, and arc voltage height control with machine torch holder) Just add plasma and computer.	
Torchmate 4 x 4 CNC Plasma System	\$7,506.73
(Includes: gantry, 2 sides, extruded aluminum rails, hardware, tool mounting bracket, electronics box, cables, driver software, and arc voltage height control with machine torch holder)	