

MONSTER
PERFORMANCE CAR™
F A C T O R Y • L I N X™
with  SoundGate® technology

MONSTER®
iCruze®
for iPod®

ICRUZE INTERFACE CABLE
MPC FX IM-MB1

INSTALLATION & USER GUIDE

IMPORTANT NOTE:

This cable and/or module is for use in installations that typically have a CD changer installed from the factory or are prewired for one in a non-dash location. It is a complicated installation and professional installation is HIGHLY recommended.

The installation of iCruze® will disconnect and cease the normal operation and function of the factory-installed CD changer, satellite radio, and/or DVD entertainment systems.

This Interface Cable is designed to work with Monster® Factory•Linx™ Interface Module IM-MB1 & Monster Factory•Linx M-Bus Extension Cable. Make certain you have purchased this Interface Module and Extension Cable or your iCruze installation will not function.

The Monster Factory•Linx™ Interface Cable(s) and/or Module(s) enclosed are custom designed for your particular vehicle. Because every vehicle is different, unique adaptors are required to make your iCruze installation and operation function exactly as it was designed. Each is designed and tested to fit correctly and made from the top quality materials for trouble-free operation.

A NOTE FROM THE HEAD MONSTER

Thank you for purchasing the Monster® Factory-Linx™ iCruze®—one of the most exciting products Monster has ever offered. Monster worked closely with the engineers at Apple to design iCruze to give you the most reliable, most complete control of your iPod® through your factory car stereo. iCruze also gives you a direct connection for crystal clear sound quality. And it charges your iPod the entire time you're driving, so when you leave the car your iPod is charged up and ready to go. You'll soon be wondering how you ever got along without your iPod and iCruze in your car.






Noel Lee,
The Head Monster

Monsterously,



A stylized, handwritten signature in dark ink, appearing to read 'Noel Lee'.

Noel Lee,
The Head Monster

LOSS OF CERTAIN EXISTING FUNCTIONS

-  Use and installation of iCruze® requires disconnection and loss of use of any existing factory installed non-integrated CD-changer (i.e. trunk, center console, under seat).
-  iCruze is not compatible with some vehicles that have existing, factory installed integrated CD changers. Typically this is an in-dash CD changer. Call your dealer and ask if your factory stereo has a CD or CD changer port/option on the rear of the stereo. If yes, then it is iCruze compatible.
-  Existing factory installed vehicle features, such as Satellite Radio, DVD entertainment systems, navigation systems and video cameras may be impacted by or cease to function with use and installation of iCruze, if these components were connected to the CD changer port. Check the iCruze in-store selection guide, visit iPodiCruze.com, or call customer service at 1-415-840-2000 (9am–5pm Monday through Friday PT) for more details.

INSTALLATION SAFETY PRECAUTIONS & WARNINGS

-  Monster® is not responsible for any damage to your vehicle while installing iCruze. The wiring and installation of the iCruze requires technical skill. Monster recommends iCruze installation by a MECP certified professional car audio technician. If you choose to install yourself, be aware that specialized car stereo removal tools may be needed and can be found available for purchase on our website iPodiCruze.com.
-  Make sure you have purchased the correct Monster Factory•Linx™ Interface Cable and/or Module. See the iCruze Factory•Linx in-store selection guide or visit iPodiCruze.com to ensure you have everything you need to install iCruze in your car. Double check

the iCruze in-store selection guide, visit iPodiCruze.com, or call customer service at 1-415-840-2000 (9am–5pm Monday through Friday PT) for more details.

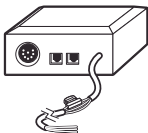
- ⚠ If your factory stereo is protected by an anti-theft code, have the code available so you can use your stereo once re-connected. Consult your car owner's manual or contact your local car dealer for more information.
- ⚠ Before installing iCruze, remove the cable from the negative battery terminal. Failure to do so may cause electrical shock and/or injury.
- ⚠ iCruze is designed to be installed in the dash near the car stereo. Installation elsewhere or in a dusty or moist area may cause problems or product failure.
- ⚠ Many connectors in your car may look the same. Do not force or alter the cable connectors to fit. Failure to do so may damage your vehicle's electronics, cause shock or fire.
- ⚠ While installing iCruze, make sure to avoid sharp edges which can damage wiring. Failure in doing so may cause iCruze to not work or result in a fire.
- ⚠ Do not attempt to take iCruze apart. The internal circuits are static sensitive and contain no user serviceable parts.

IMPORTANT IPOD® FUNCTION NOTES & SAFETY

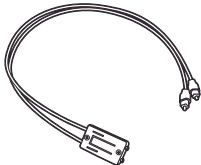
- ⚠ Monster is not responsible for any lost data on your iPod even during normal use of this product.
- ⚠ Monster is not responsible for damage caused to your iPod from misuse.

- ⚠ iCruze® is compatible with iPod® models with dock connector.
- ⚠ You should never leave or store your iPod in your vehicle for an extended amount of time. Failure to do so may damage your iPod from heat, cold and moisture extremes. See your iPod manual for acceptable temperature ranges.
- ⚠ For added safety and security while driving, Monster recommends placing the iPod in your glove box or other stow-away location such as a center console.
- ⚠ Your iPod must have certain firmware for proper iCruze compatibility. Minimum Version 1.2 for iPod Mini, version 1.0 for iPod Photo, iPod nano, iPod video, and version 2.2 for iPod. Visit apple.com/support for more information.
- ⚠ When you unplug the iPod from the iCruze, you will notice that the iPod will display the iCruze logo for a short time which is normal. It will revert back to the usual screen shortly after this time period.
- ⚠ The functions and control of your iPod may differ depending on your radio. iCruze is limited by the available functions of your radio. i.e.— If your radio does not have a shuffle/random this feature will not be available.
- ⚠ iCruze utilizes playlists on your iPod to access music. Be sure to refer to your installation and user guide that came with iCruze for more details on how to optimize your playlist for use with the main iCruze unit.
- ⚠ iCruze is not compatible with Bose audio systems. If your Mercedes-Benz says Bose on the stereo or any of the speaker covers, iCruze is not compatible.

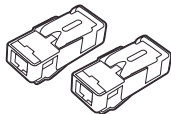
INCLUDED ITEMS



**(1) Monster Performance
Car™ Factory•Linx™
iCruze® Interface Module**
Part # 156823



**(1) Monster Performance
Car Factory•Linx iCruze
Fiber Optic Link**
1999-2004 Mercedes Benz®



**(2) Monster Performance
Car Factory•Linx iCruze
Inline Connector**
Part # 169201

BEFORE YOU BEGIN

Because iCruze® emulates a CD changer, if your vehicle currently has a CD changer installed, it will need to be unplugged for the iCruze to operate. Should you experience a problem, please call Customer Service at 1-415-840-2000 (9am–5pm Monday through Friday PT) to report it.

IMPORTANT: Please completely read and review the installation guide that came with iCruze BEFORE you begin this installation for steps required prior to Interface Cable installation.

INSTALLATION

Review the installation guide that came with iCruze for installation steps required prior to Interface Cable/Module installation.

WARNING:

IT IS NOT RECOMMENDED TO DISCONNECT THE BATTERY ON 1999 AND LATER MERCEDES-BENZ VEHICLES. IN MANY OF THESE VEHICLES, A SPECIAL POWER RETENTION UNIT MUST BE CONNECTED TO THE VEHICLE TO MAINTAIN MEMORY POWER FOR VARIOUS MODULES IN THE VEHICLE. DISCONNECTING THE BATTERY MAY REQUIRE RETURNING THE VEHICLE TO THE DEALERSHIP FOR REPROGRAMMING. BE CAREFUL WHEN CONNECTING THE POWER AND GROUND FOR THE ICRUZE INTERFACE MODULE TO PREVENT SHORTING OUT ANY FACTORY WIRING.

WHEN WORKING WITH THE FIBER OPTIC CABLES USED IN THESE MERCEDES-BENZ VEHICLES, NOTE THAT THEY ARE EASILY DAMAGED. TAKE CARE THAT THE CABLES ARE NOT CRUSHED, KINKED, CUT OR NICKED WHILE WORKING WITH THEM.

THE FACTORY FIBER OPTIC CABLES CAN BE IDENTIFIED BY AN ORANGE/BROWN SEMI-RIGID INSULATION.

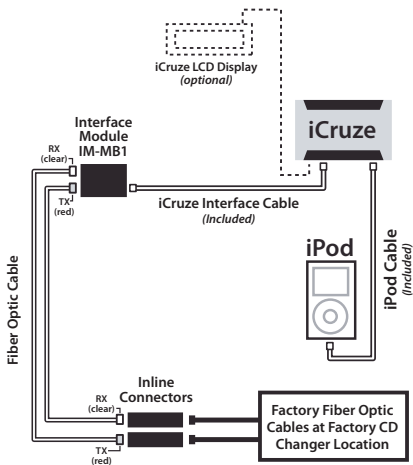
THE FIBER OPTIC CABLES MUST NOT BE BENT IN A RADIUS TIGHTER THAN 1-INCH (2-INCH DIAMETER). DOING THIS WILL PERMANENTLY DAMAGE THE CABLE.

NOTE: The Mercedes fiber optic system is configured as a closed ring. The ring begins at the radio, goes through each component and ends back at the radio. All connections must be complete or the ring is broken and there will be no sound.

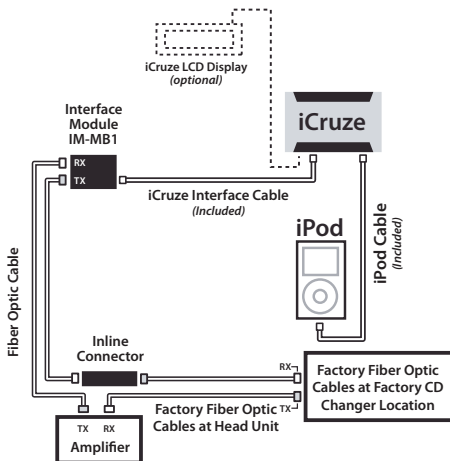
Light enters the factory cables through the clear lens and exits each factory cable through the red lens. The iCruze interface cable has clear lens on the RX cable, and a red lens on the TX cable. Proper connection of the iCruze cable is shown in later diagrams.

iCruze must be connected in the CD changer location because of the sequence of components required by the Mercedes fiber optic system. Locating the iCruze in a different position on the "chain" may cause the entire audio system to stop functioning.

Installation Diagram/ Location Overview



Alternate Configuration



Step 1

Identify the location of the Mercedes CD changer. It does not matter if a CD changer is installed, you need only determine the location where it would be installed. If you do not already have a CD changer, see the chart below and verify you have the correct location by finding the fiber optic connector (a 90 degree connector with two yellow cables) and a second connector with 3 wires. This is where the iCruze® IM-MB1 Interface Module will need to be installed.

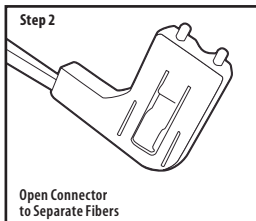
NOTE: If the changer location is the in the trunk area, you will want to purchase an M-Bus extension cable (Monster Performance Car Part # MPC FX MBUS-5M) so the iCruze can be mounted in the dash. If you do not, the included iPod® cable may not reach to the dash area.

FACTORY CD CHANGER LOCATIONS

Model	Year	Changer Mounting Location
C230, C240, C320, C32 AMG	2001-2004	Glovebox
C230 Kompressor	2002-2004	Glovebox
C230 Kompressor	2001	Passenger Side Trunk
C280, C230K	1999-2000	Passenger Side Trunk
CL500, CL600, CL55 AMG	1999-2004	Driver Side Trunk
CLK320, CLK430, CLK500, CLK55 AMG	2003-2004	Glovebox
CLK320, CLK430, CLK55 AMG	1999-2002	Passenger Side Trunk
E300	1999	Driver Side Trunk
E320, E430, E55 AMG	1999-2002	Passenger Side Trunk
G500, G55 AMG	2002-2004	Driver Side Trunk
ML320, ML350, ML430, ML500, ML55 AMG	2003-2004	Passenger Side Trunk
S420, S430, S500, S600, S55 AMG	2000-2003	Driver Side Trunk
SL500, SL600, SL55 AMG	1999-2004	Driver Side Trunk
SLK230, SLK320, SLK32 AMG	1999-2004	Passenger Side Trunk

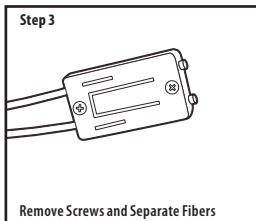
Step 2

If you have a CD changer already installed, it will need to be disconnected now. At the changer location, get the factory fiber optic connector and carefully open it so you can remove the individual fiber optic cables. Inside, one cable will have a red lens on the end and the other a clear lens. Also locate the 3-wire power connector, it will be very close to the fiber connector.



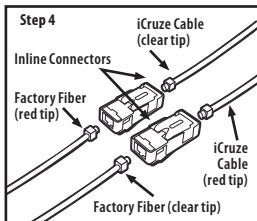
Step 3

Open the iCruze MB1 Interface Module package and remove the Module and the fiber optic cable harness. One end of the harness has a pair of loose fibers and the other end has the fibers joined in a single connector. Remove the screws in the single connector so you may separate the two fibers from the connector.



Step 4

There are a pair of inline fiber optic connectors in the MB1 Interface Module package. These will connect the factory fibers to the iCruze® MB1 Interface Module fibers. Connect the factory fiber with the red lens to one of the inline connectors by lifting the metal tab and inserting the lens. Snap the metal tab down to secure the lens.



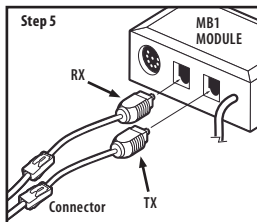
CAUTION: The factory fibers have ends that are shaped differently for red and clear. The inline connectors will accept red at one end and clear at the other. If the red lens does not push in easily, try the other end of the inline connector.

Once the factory red fiber is in one side of the inline connector, connect the CLEAR tipped fiber from the iCruze MB1 Interface Module to the other end of the inline connector. Please verify — red factory fiber to clear iCruze MB2 Interface Module fiber.

Now do the same with the other fibers and inline connector. Clear factory fiber to red iCruze MB1 Interface Module fiber.

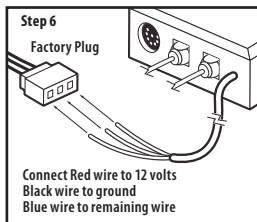
Step 5

The Interface Module fibers should now be connected to the factory fibers. Each end of the fiber now has a black connector that needs to be connected to the iCruze MB1 Interface Module. The fiber connectors are labeled RX and TX. Looking at the Interface Module, the RX fiber plugs into the left port and the TX connector goes into the right port.



Step 6

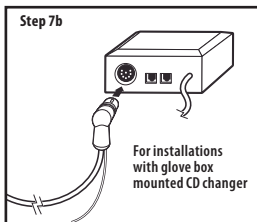
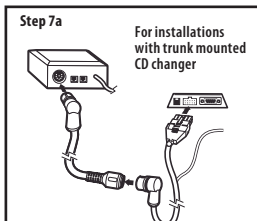
There should also be a 3 wire connector at the factory CD changer location. With a multimeter, verify the power and ground wires. They are typically red for power and black or brown for ground. Connect the power wire to the red wire and ground to the black wire on the iCruze MB2 Interface Module. The remaining factory wire (which is typically blue) connects to the blue wire on the iCruze MB1 Interface Module.



Step 7

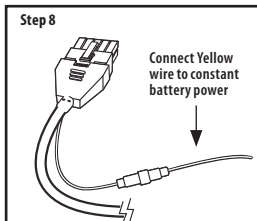
If your CD changer location is the trunk, you will now connect the proper end of your iCruze® M-Bus extension cable to the iCruze MB1 Interface Module and route the remaining end to the dash. The best place to mount the iCruze unit is a convenient, out-of-the-way place under the dash, route the cable to there. Connect the iCruze M-Bus extension cable to the iCruze Interface Cable. Connect the other end of the iCruze Interface Cable to the rectangular port on the iCruze.

If your changer location is the glovebox, connect the iCruze Interface Cable to the round port on the iCruze MB1 Interface Module and the rectangular plug to the iCruze.



Step 8

The iCruze Interface Cable used in Step 7 has a loose yellow wire. Connect the yellow wire to constant, unswitched power. This should be available from the car stereo wire harness, the fusebox and sometimes the cigarette lighter. Consult your car's factory service manual for the location of a wire near where you have chosen

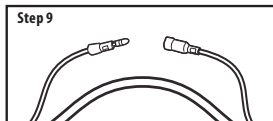


to mount the iCruze unit. (An MECP certified installation professional can also help.)

To prevent cutting the car's wire harness, a T-Tap-type connector is recommended (be certain to use the proper size T-Tap to ensure a reliable connection).

Step 9

On the iCruze Interface Cable there is a blue/white striped wire that goes between both ends of the cable. In the middle is a connector that comes apart. Pull the ends to disconnect them. The female end is not used and can be left alone.



Step 10

Cut off the male "bullet" end and connect it to 12-volt accessory power.

FINAL NOTE

In very rare instances, the factory fiber optic connector is not plugged in the factory radio. The entire audio system will continue to function but the iCruze will not respond. If after a complete installation, you get no sound from iCruze, check to be sure the factory fiber optic connector is plugged into the radio. Power cycle the ignition and radio to ensure a proper reboot if the connector was not plugged into the radio.

INSTALLATION COMPLETE

Refer back to the installation guide that came with iCruze to complete your iCruze installation and for more details on using iCruze functions and features.

OPERATION NOTES

To access iCruze®, press the CD button the radio. If the vehicle has an in-dash CD player and there is a CD present, you will need to press the CD button twice. After the initial installation, let the radio play for at least 30 seconds before selecting the iCruze via the CD button.

CUSTOMER SUPPORT

If you have questions, please try iPodiCruze.com for the latest updates to manuals, products and more. You can also call 1-415-840-2000 (9am–5pm Monday through Friday PT) for assistance.

LIMITED WARRANTY FOR CONSUMERS

United States

Monster Cable Products, Inc. 455 Valley Drive, Brisbane, CA 94005 USA, 1 (415) 840-2000 ("Monster") extends to You this Limited Warranty. Statutory or common law may provide You with additional rights or remedies, which shall not be affected by this Limited Warranty.

DEFINITIONS

"Adequate Use" means use of the Product (i) within a home or dwelling, (ii) for private (as opposed to commercial) purposes, (iii) in conformance with all applicable local, state or federal law, code or regulations (including without limitation building and/or electrical codes), (iv) in accordance with manufacturer recommendations and/or instructions in the materials and documentation that accompany the Product, and (v) with proper electrical grounding.

"Authorized Dealer" means any distributor, reseller or retailer that (i) was duly authorized to do business in the jurisdiction where it sold the Product to You, (ii) was permitted to sell You the Product under the laws of the jurisdiction where You bought the Product, and (iii) sold You the Product new and in its original packaging.

"Formal Warranty Claim" means a claim made in accordance with the section "Formal Warranty Claims" herein.

"Product" means a Product (i) that is listed in the Specifications Table below, (ii) that You bought from an Authorized Dealer new and in its original packaging, and (iii) whose serial number, if any, has not been removed, altered, or defaced.

"Product Defect" means a defect, malfunction, non-conformance to this Limited Warranty, or other inadequacy of the Product that existed at the time when You received the Product from an Authorized Dealer and that causes a failure of the Product to perform in accordance with Monster's documentation accompanying the Product, unless such failure has been caused completely or partly by (a) any use other than Adequate Use, (b) transportation, neglect, negligence misuse or abuse by anyone other than Monster's employees; (c) alteration, tampering, modification, or installation of the product by anyone other than a Monster employee; (d) accident (other than a malfunction that is caused by a Product Defect), including power surges; (e) maintenance or service of the Product by anyone other than a Monster employee; (f) exposure of the Product to heat, bright light, sun, liquids, sand or other contaminants; or (g) acts outside the control of Monster, including without limitation acts of God, fire, storms, earthquake or flood.

"Warranty Period" means the time period during which Monster must have received Your Formal Warranty Claim. The different Warranty Periods related to Product Defects are defined in the Specifications Table below. The Warranty Period commences on the date when You purchased or received (whichever occurs later) the Product from an Authorized Dealer as evidenced by the Authorized Dealer's invoice, sales receipt or packing slip. If You do not have written proof of the date of purchase or receipt, then the Warranty Period commences three (3) months after the date when the Product left Monster's factory

as evidenced by Monster's records. The Warranty Period ends after the time defined in the Specifications Table has expired or after You have transferred ownership of the Product, whichever occurs earlier. Also, You must call Monster and obtain a Return Authorization Number (as described under "How to Make a Claim") within two (2) months after You discover a Product Defect (or should have discovered it, if such Product Defect was obvious).

"You" means the first individual person that purchased the Product in its original packaging from an Authorized Dealer. This Limited Warranty does not apply to persons or entities that bought the Product (i) in used or unpackaged form, (ii) for resale, lease or other commercial use, or (iii) from someone other than an Authorized Dealer.

SCOPE OF THIS LIMITED WARRANTY

PRODUCTS. If a Product contained a Product Defect when You bought it from an Authorized Dealer and Monster receives a Formal Warranty Claim from You within two (2) months after You discover such Product Defect (or should have discovered it, if such Product Defect was obvious) and before the end of the Warranty Period for Product Defects applicable to the affected Product, then Monster will provide You with one of the following remedies: Monster will (1) repair or, at Monster's sole discretion, replace the Product, or (2) refund to You the purchase price You paid to the Authorized Dealer for the affected Product if repair or replacement is not commercially practicable or cannot be timely made. **NOTE: MONSTER DOES NOT ASSUME ANY LIABILITY FOR ANY INCIDENTAL, CONSEQUENTIAL OR INDIRECT DAMAGES UNDER THIS LIMITED WARRANTY. SOME STATES DO NOT ALLOW THE EXCLUSION OR LIMITATION OF INCIDENTAL OR CONSEQUENTIAL DAMAGES, SO THE ABOVE LIMITATION OR EXCLUSION MAY NOT APPLY TO YOU.**

GENERAL PROVISIONS

CHOICE OF LAW/JURISDICTION. This Limited Warranty and any disputes arising out of or in connection with this Limited Warranty ("Disputes") shall be governed by the laws of the State of California, USA, excluding conflicts of law principles and excluding the Convention for the International Sale of Goods. The courts located in the State of California, USA shall have exclusive jurisdiction over any Disputes.

OTHER RIGHTS. THIS LIMITED WARRANTY GIVES YOU SPECIFIC LEGAL RIGHTS, AND YOU MAY ALSO HAVE OTHER RIGHTS, WHICH VARY FROM STATE TO STATE. THIS LIMITED WARRANTY EXTENDS ONLY TO YOU AND CANNOT BE TRANSFERRED OR ASSIGNED. If any provision of this Limited Warranty is unlawful, void or unenforceable, that provision shall be deemed severable and shall not affect any remaining provisions. In case of any inconsistency between the English and other versions of this Limited Warranty, the English version shall prevail.

REGISTRATION. Please register Your Product at www.MonsterCable.com. Failure to register will not diminish Your warranty rights.

SPECIFICATIONS TABLE

PRODUCT MODEL NUMBER	WARRANTY PERIOD FOR PRODUCT
MPC FX IM-MB1	Two (2) Years

FORMAL WARRANTY CLAIM

HOW TO MAKE A CLAIM. (1) Call, or write to, Monster within two (2) months after You discover a Product Defect (or should have discovered it, if such Product Defect was obvious); (2) Give a detailed explanation of how the damage occurred; (3) Obtain a Return Authorization Number; (4) Upon receipt of a claim form (which may be sent to You after You filed Your Formal Warranty Claim), fill out the claim form entirely; (5) Return the Products, shipping prepaid by You (to be refunded if You are entitled to a remedy under the Scope of this Limited Warranty), to Monster for verification of damage, along with a copy of Your original sales receipts and proof of purchase (UPC label or packing slip) for such Products, the completed claim form, and printed Return Authorization Number on the outside of the return package (the claim form will include instructions for return).

TOLL-FREE TELEPHONE NUMBERS. United States: 1-877-800-8989 (toll-free), or 1-415-840-2000.

ADDRESS: Monster Cable Products, Inc. 455 Valley Drive, Brisbane, CA 94005 USA

FURTHER PROCEEDINGS. Monster will determine whether a Product Defect existed. Monster may, at its discretion, direct You to obtain a repair estimate at a service center. If a repair estimate is required, You will be instructed on how to properly submit the estimate and the resulting invoice to Monster for payment. Any fees for repairs may be negotiated by Monster.

TIMING. If You bring a Formal Warranty Claim and fully comply with all terms and conditions of this Limited Warranty, Monster will use its best efforts to provide You with a remedy within thirty (30) days after receipt of Your Formal Warranty Claim (if You reside in the United States - forty-five (45) days if You reside elsewhere), unless obstacles outside Monster's control delay the process.

Ver.12/14/2004 – US ©2006 Monster Cable Products, Inc.

NOTES

NOTES

MONSTER

PERFORMANCE CAR™

455 Valley Drive
Brisbane, CA 94005 USA

Visit us on the Web at
MonsterPerformanceCar.com

Monster iCruze is designed and engineered in the USA,
and manufactured for Monster to its quality specifications.

Made in China.

© 2006 Monster Cable Products, Inc.
455 Valley Drive, Brisbane CA 94005 USA

Monster, Monster Performance Car, Factory•Linx, the Monster Performance Car logo and the product design are the products of registered or unregistered trademarks of Monster Cable Products, Inc. or its subsidiaries in the U.S. and abroad. iCruze and Soundgate are registered and unregistered trademarks of The Putnum Group, Inc. iPod, Apple are trademarks of Apple Computer, Inc. Mercedes-Benz is a trademark of DaimlerChrysler AG Corporation. Images and illustrations shown may vary from actual product. Specifications subject to change without notice.