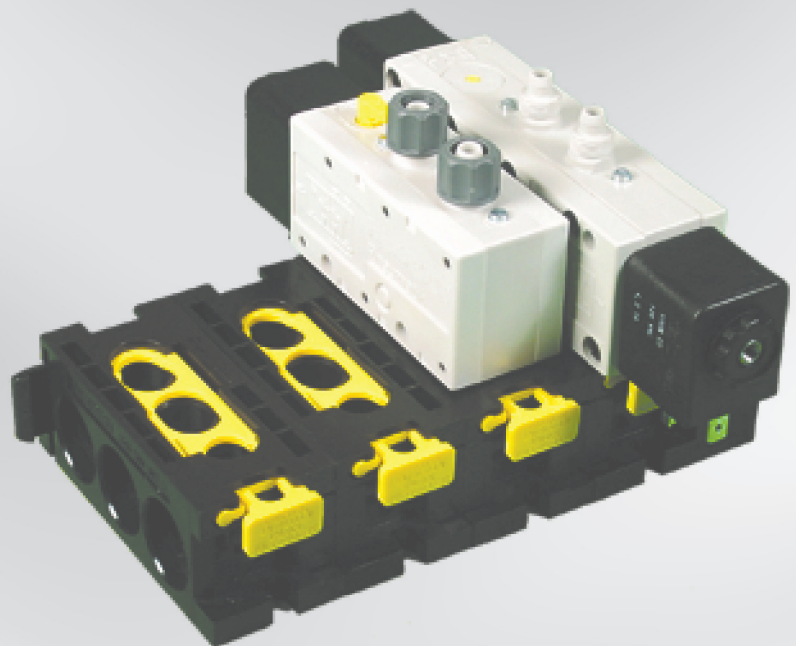


## SERIES 740 VALVES PNEUMATIC DIRECTIONAL CONTROL

**Rexroth**  
Pneumatics



# Series 740 Valves

Specifications and features



## 4 Way / 2 & 3 Position Solenoid & Air Pilot Operated Diaphragm-Poppet Valve

### TECHNICAL DATA:

#### Port Sizes:

Integrated Fittings for 3/8", 5/16", and 8mm tubing  
Push-in fitting styles bodies available for metric tubing only  
(2 position only)

#### Working Pressure:

20 PSI minimum  
150 PSI maximum  
External Pilots not available

#### Flow: $C_v=0.7$ - with Integrated Fittings

( $C_v=1.3$  - comparable flow to threaded part valve)

#### Temperature Range:

Solenoid Valve +5°F to 122°F

Air Pilot +5°F to 140°F

#### Media:

Air (either lubricated or non-lubricated)

#### Materials:

Polyacetal Engineering plastic with Buna N seals and diaphragms

#### Combination Manual Override:

Locking & Non-Locking

### ELECTRICAL DATA:

Standard Voltage (all coils are rated for continuous duty)	Power Consumption	
	Inrush	Holding
24 VAC-50/60 Hz, 110V-50 Hz/120V-60 Hz 220V-50 Hz/240V	6.4 VA	3.7 VA
6, 12, 24 VDC	2.7 W	

Voltage Tolerance:  $\pm 10\%$  (Except for Explosion proof and Intrinsicly safe solenoids.)

NOTE: Electrical connectors must be ordered separately. One per solenoid required. See complete listing on Solenoid Connectors page.

### Recommended Tubing:

Standard 3/8" O.D. x 0.062" wall - poly tubing

\*5/16" O.D. x 0.040 wall - nylon tubing

\*8mm x 1.00mm wall poly tubing

\*Requires optional tube nut kit (R432015289)

Valves designed for 10mm O.D. x 1mm wall poly tubing are also available.

Adapters available: 1/4" O.D. x 0.040 wall - poly tubing.

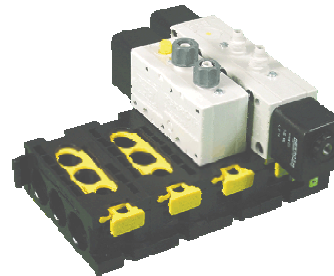
Tube nuts are supplied with each valve for 3/8" x 0.062 wall poly tubing

### Features:

- NEMA 4 Electrical protection
- UL recognized & CSA approved coils version available
- Packaged as a cylinder/valve combination with TaskMaster® cylinders sizes 1 1/2" thru 4". See catalog SC-200.
- Integrated fittings
- Adjustable built-in flow controls in R and S exhausts on two position valves
- Cycle life: 20 to 150 million cycles
- Response time for 24VDC single solenoid valve:  
(at supply pressure 85 psi)  
On (0-77 psi) 18ms or less  
Off (85-8 psi) 32 ms or less

**Standard fittings:**  
Single and double solenoid  
Single and double air pilot

**Push-in fittings:**  
Single and double solenoid  
(Metric tubing only)



# Series 740 Valves

Single and double solenoid, 5/2



## 4 Way / 2 Position Solenoid Operated Diaphragm Poppet Valve

NOTE: All dimensions expressed in  $\frac{IN}{MM}$

NOTE: Electrical connector must be ordered separately. One per solenoid required, see Solenoid Connectors page.

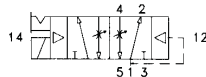
All valves on this page come with 3/8" tube nuts designed to accommodate 3/8" x 0.062" wall poly tubing.

Valves with tube nuts for 5/16" (8mm) tubing, 10mm tubing, and push-in fitting style bodies available.

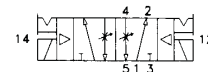
## DOUBLE SOLENOID OPERATED

The external non-locking manual override button may be pushed from one side to the other to select which delivery port is pressurized initially.

## SINGLE SOLENOID WITH AIR SPRING RETURN



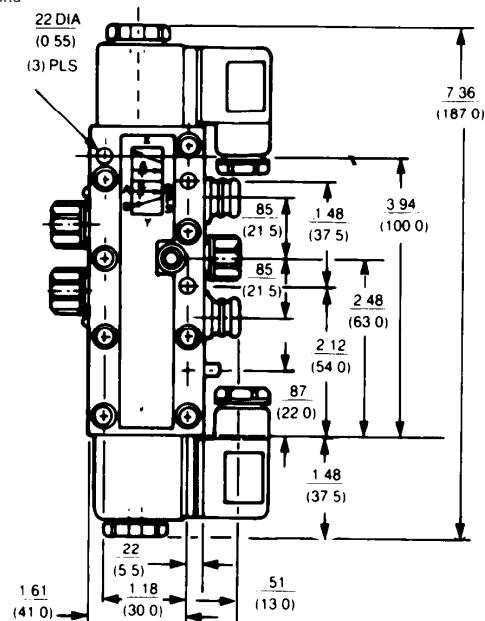
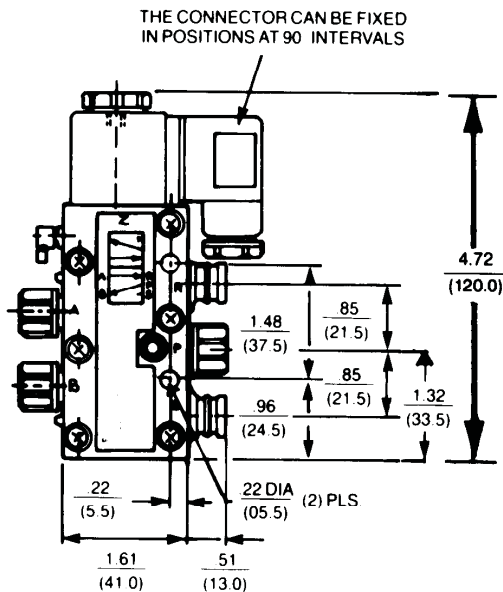
## 2 POSITION



## 2 POSITION

NEW PART NO.	OLD PART NO.	VOLTAGE	NEW PART NO.	OLD PART NO.	VOLTAGE
5727495270	PW-067697-00001	110 VAC 50Hz/120 VAC 60Hz	R432016659	PW-067715-00001	110 VAC 50Hz/120 VAC 60Hz
R432016655	PW-067697-00002	220 VAC 50Hz/240 VAC 60Hz	R432016660	PW-067715-00002	220 VAC 50Hz/240 VAC 60Hz
R432016656	PW-067697-00003	6 VDC	R432016661	PW-067715-00003	6 VDC
R432016657	PW-067697-00004	12 VDC	R432016662	PW-067715-00004	12 VDC
5727490220	PW-067697-00005	24 VDC	R432016663	PW-067715-00005	24 VDC
R432016658	PW-067697-00006	24 VAC 50/60 Hz	R432016664	PW-067715-00006	24 VAC 50/60 Hz
R432002436		without coil	R432002437		without coil

**Unique Manual Override Feature:** Single solenoid valves are equipped with a convertible manual override button. Valve comes standard with *extended locking* override. By snipping tab off of plastic button, override becomes *non-locking extended*. By snipping button at first scored line, it becomes a *flush non-locking* override. By snipping at second scored line, a *flush locking* override is obtained, requiring a screwdriver to actuate.



Typical width of valve: 1.38" (35.0mm)

See next page for U.L. recognized and CSA approved coils.

# Series 740 Valves

Double solenoid 5/3 and U.L. recognized/CSA approved models



## 4 Way / 3 Position, Double Solenoid Operated Diaphragm-Poppet Valve

**NOTE:** Electrical connector must be ordered separately. One per solenoid required, see Solenoid Connectors page.  
All valves on this page come with 3/8" tube nuts designed to accommodate 3/8" x 0.062" wall poly tubing.

NEW PART NO.	OLD PART NO.	DESCRIPTION	SYMBOL
<b>CLOSED CENTER VERSION</b>			
R432016670	PW-067717-00001	110 VAC 50 Hz/120 VAC 60 Hz	
R432016671	PW-067717-00002	220 VAC 50 Hz/240 VAC 60 Hz	
R432016672	PW-067717-00003	6 VDC	
R432016673	PW-067717-00004	12 VDC	
R432016674	PW-067717-00005	24 VDC	
R432016675	PW-067717-00006	24 VAC 50/60 Hz	
R432002438		without coil	
<b>EXHAUST OPEN CENTER VERSION</b>			
R432016665	PW-067716-00001	110 VAC 50 Hz/120VAC 60 Hz	
R432016666	PW-067716-00002	220 VAC 50 Hz/240 VAC 60 Hz	
R432016667	PW-067716-00004	12 VDC	
R432016668	PW-067716-00005	24 VDC	
R432006669	PW-067716-00006	24 VAC 50/60 Hz	
R432002439		without coil	

**Warning:** Do not energize both solenoids at same time or all ports may be pressurized or exhausted.

## 4 Way / 2 Position, Solenoid Operated Valves With U.L. Recognized & CSA Approved Coils

PART NO.	DESCRIPTION
R432034081	5/2 Single Solenoid, w/ 12VDC
R432034082	5/2 Single Solenoid, w/ 24VDC
R432034083	5/2 Single Solenoid, w/ 110VAC 50/60Hz
R432034084	5/2 Double Solenoid, w/ 12VDC
R432034085	5/2 Double Solenoid, w/ 24VDC
R432034086	5/2 Double Solenoid, w/ 110VAC 50/60Hz
R432034087	5/3 Closed Center, w/ 12VDC
R432034088	5/3 Closed Center, w/ 24VDC
R432034089	5/3 Closed Center, w/ 110VAC 50/60Hz
R432034090	5/3 Open Center, w/ 12VDC
R432034091	5/3 Open Center, w/ 24VDC
R432034092	5/3 Open Center, w/ 110VAC 50/60Hz

**These valves do not include solenoid connectors. Order one per solenoid.**

**Dimensions are the same as our standard models.**

# Series 740 Valves

Intrinsically safe solenoid valves, 5/2



## 4 Way 2 Position Intrinsically Safe Solenoid Valves for Hazardous Locations Classes I, II and III Div I Groups A, B, C, D, E, F and G

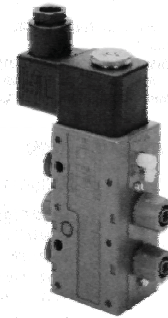
For use in low voltage (24VDC) intrinsically safe applications.  
No other voltage is approved.

Comes with standard non-lighted DIN solenoid connector.

**\* Must be connected to an FM Approved Zener Diode Barrier.**

**Maximum valve pressure is 115 PSI.**

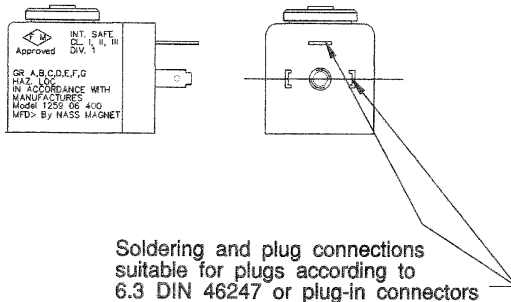
\*FM Approved Barrier Manufacturers:  
Stahl Incorporated—Woburn, MA  
(Request Application Memo #35 and ADV-300.ISSV for Intrinsically Safe Valve information and Stahl Barrier part numbers.)



Single Solenoid Model  
Part No. R432008894  
(old no. P - 028044-00005)

For Dimension, reference standard solenoid models.

## Installation Information

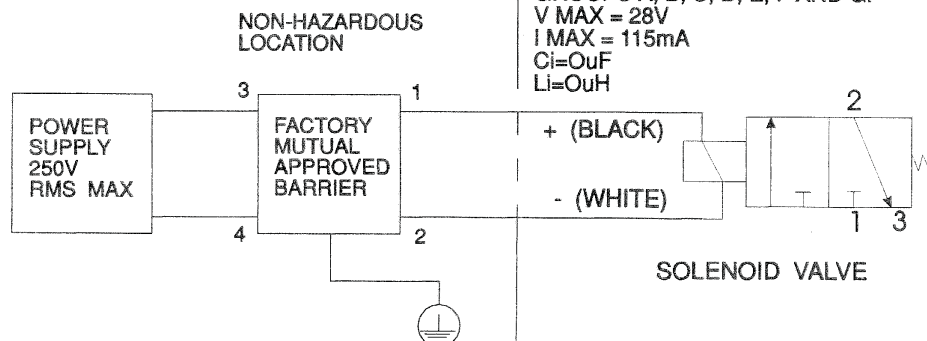


### NOTES:

- (1) Maximum non-hazardous voltage not to exceed 250 V RMS.
- (2) Connect per barrier manufacturer's instructions.
- (3) Connect per ISA RP 12.6 instructions.
- (4) Maximum valve pressure: 115 psi.
- (5) Maximum inductance of solenoid operators when mounted on valve body not to exceed 375 mH.
- (6) Solenoid operator for 3/2 way function normally closed.

HAZARDOUS LOCATION CLASS I, II, & III, DIV. 1  
GROUPS A, B, C, D, E, F AND G.

V MAX = 28V  
I MAX = 115mA  
Ci=OuF  
Li=OuH



# Series 740 Valves

Solenoid valves 5/2 with larger integrated fittings



## 4 Way / 2 Position Solenoid Operated

Standard Series 740 valve with tube nuts for 5/16" (0.040 wall) nylon tubing or 8mm (1mm wall) poly tubing.

Push-in fittings are for 10mm (1mm wall) poly tubing.

NOTE: Electrical connectors must be ordered separately. One per solenoid required, see Solenoid Connectors page.

### 2 Position, Standard fittings

	NEW PART NO.	OLD PART NO.	DESCRIPTION
<b>Single Solenoid</b>	R432016647	PW-027860-00001	110 VAC 50 Hz/120VAC 60 Hz Single Solenoid
	R432016648	PW-027860-00002	220 VAC 50 Hz/240VAC 60 Hz Single Solenoid
	R432016649	PW-027860-00005	24 VDC Single Solenoid
	R432016650	PW-027860-00006	24 VAC 50/60 Hz Single Solenoid
	NEW PART NO.	OLD PART NO.	DESCRIPTION
<b>Double Solenoid</b>	R432016651	PW-027897-00001	110 VAC 50 Hz/120VAC 60 Hz Double Solenoid
	R432016652	PW-027897-00002	220 VAC 50 Hz/240VAC 60 Hz Double Solenoid
	R432030385	PW-027897-00004	12 VDC Double Solenoid
	R432016653	PW-027897-00005	24 VDC Double Solenoid
	R432016654	PW-028797-00006	24 VAC 50/60 Hz Double Solenoid

### 2 Position, Push-in fittings (10mm O.D. tubing)

	NEW PART NO.	OLD PART NO.	DESCRIPTION
<b>Single Solenoid</b>	5727475280	572-747-528-0	220 VAC 50 Hz/240vac 60 Hz Single Solenoid
	5727470220	572-747-022-0	24 VDC Single Solenoid
	5727475302	572-747-530-2	Base Valve - No Solenoid*
	NEW PART NO.	OLD PART NO.	DESCRIPTION
<b>Double Solenoid</b>	5727485280	572-748-528-0	220 VAC 50 Hz/240vac 60 Hz Double Solenoid
	5727480220	572-748-022-0	24 VDC Double Solenoid
	5727485302	572-748-530-2	Base Valve - No Solenoid*

\* Base valves are supplied without coil(s) or connector(s) which must be ordered separately (see later page).

## Series 740 Valve with 10mm Supply and Delivery Ports for higher flow applications—2 Position

Note: Use with 10mm O.D. x 1mm wall poly tubing

NEW PART NO.	OLD PART NO.	DESCRIPTION
R432015405	P-068700-K0000	Single Solenoid
R432015410	P-068704-K0000	Double Solenoid

10mm Valves are supplied without coil(s) or connector(s) which must be ordered separately (see later page).

# Series 740 Valves

Extra corrosion resistant models



## 4 Way / 2 and 3 Position Solenoid Operated Corrosion Resistant Series 740 Valves

All fasteners and exposed metallic parts for the 2-position valves are 300 series stainless steel. The adjustable built-in flow control adjustment screws for the 3-position valves are zinc plated carbon steel, with all other fasteners and exposed metallic parts 300 series stainless steel. These valves are recommended for most daily wash-down applications such as food processing, breweries and dairy plants, or anywhere else that corrosion can be a problem. Dimensions are the same as standard valves.

### CORROSION RESISTANT MODELS

#### 2-POSITION VALVES Without Indicator Lights

New Part Number	Old Part Number	Description
R432015590	P -069294-00001	110VAC-50Hz/120VAC-60Hz Single Sol.
R432015591	P -069294-00002	220VAC-50Hz/240VAC-60Hz Single Sol.
R432015592	P -069294-00004	12 VDC Single Solenoid
R432015593	P -069294-00005	24 VDC Single Solenoid
R432015594	P -069294-00006	24 VAC-50/60Hz Single Solenoid
R432015597	P -069297-00001	110VAC-50Hz/120VAC-60Hz Double Sol.
R432015598	P -069297-00002	220VAC-50Hz/240VAC-60Hz Double Sol.
R432015599	P -069297-00005	24 VDC Double Solenoid

#### 2-POSITION VALVES With Indicator Lights

New Part Number	Old Part Number	Description
R432015613	P -069344-00001	110VAC-50Hz/120VAC-60Hz Single Sol.
R432015614	P -069344-00004	12 VDC Single Solenoid
R432015615	P -069344-00005	24 VDC Single Solenoid
R432015616	P -069344-00006	24 VAC-50/60Hz Single Solenoid
R432015617	P -069345-00001	110VAC-50Hz/120VAC-60Hz Double Sol.
R432015618	P -069345-00002	220V-50Hz/240V-60Hz Double Solenoid
R432015619	P -069345-00005	24 VDC Double Solenoid

#### 3-POSITION VALVES Without Indicator Lights

New Part Number	Old Part Number	Description
R432008644	P -026564-00001	110VAC-50Hz/120VAC-60Hz Closed Ctr.
R432008645	P -026564-00005	12 VDC Closed Center
R432008862	P -027873-00001	110VAC-50Hz/120VAC-60Hz Open Center
R432008863	P -027873-00005	12 VDC Exhaust Open Center

# Series 740 Valves

Air pilot, single and double

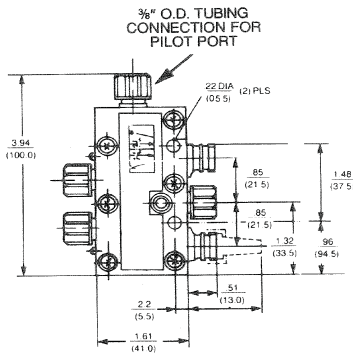
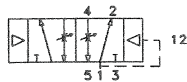


## 4 Way / 2 Position Air Pilot Operated

NOTE: All dimensions expressed in  $\frac{IN}{MM}$

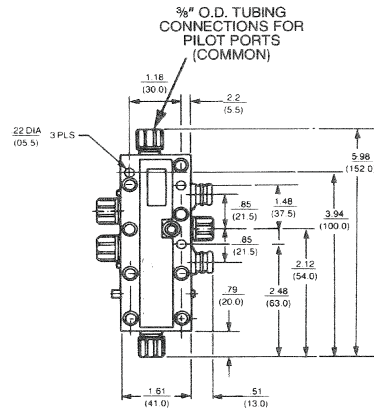
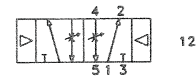
### SINGLE AIR PILOT VALVES

Part No. R432013808  
(old P - 067698-00000)

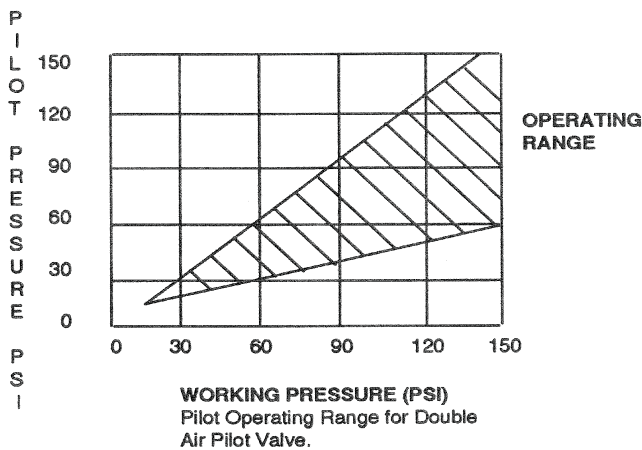


### DOUBLE AIR PILOT VALVES

Part No. R432013810  
(old P - 067700-00000)



Typical width of valve: 1.38" (35.0mm)



#### FOR DOUBLE AIR PILOT

Manual override standard. This unique, external non-locking manual override button for the double air pilot may be pushed from one side to the other to select which delivery port is pressurized.

#### Double Air Bleeder Valve:

Part No. R432008442 (old P - 026125-00000)

#### OPERATION

Exhausting either air pilot port while the opposite port is still pressurized will shift the valve. Valve features stainless steel fasteners for corrosion resistance.



# Series 740 Valves

Manifolds and gang stacking



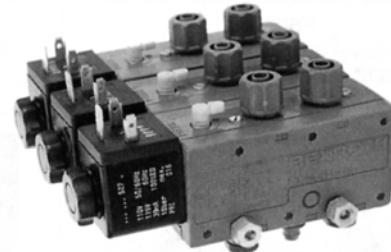
## 4 Way / 2 and 3 Position Manifold Mounts & Gang Stacking

Manifold Mounting, Snap-Together Assembly  
(Factory assembled manifolds also available)



NOTE: All dimensions expressed in  $\frac{IN}{MM}$

### Gang Stacking Arrangement



NEW PART NO.	OLD PART NO.	DESCRIPTION
R432013811	*P -067701-00000	Inlet Segment
R432013812	*P -067702-00000	End Segment
R432013813	*P -067703-00000	Station Segment
R432015880	*P -069881-00000	Single Subbase (Identical to inlet segment except rear cavities are blocked. Used to manifold mount one valve only.)

\* Required O-rings included

**ORDERING EXAMPLE**  
(4 Station Manifold):  
1 - Inlet segment  
1 - End segment  
2 - Station segments

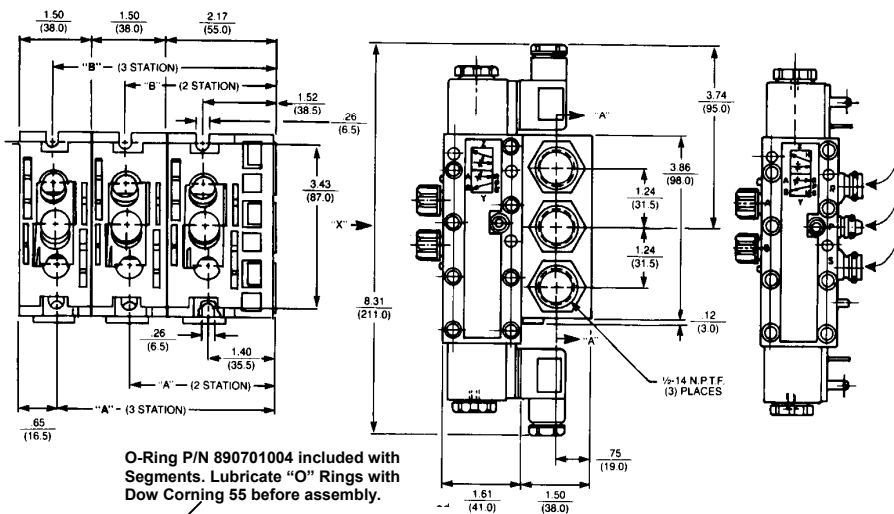
**SHEAR PLUG KNOCKOUT**  
Ganged assembly-common supply pressure obtainable by knockout shear plugs

**Mounting Accessories Kit**  
Part Number R432013852  
Includes O-ring (for sealing between the valve bodies) and an inlet port blanking cap. (Bolts and Nuts are not included).

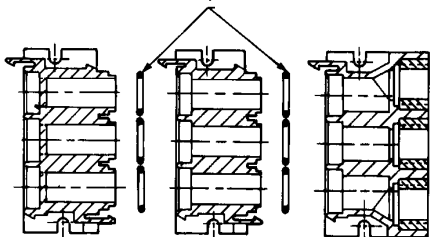
Part No. R432013853  
O-Ring Kit (included with manifold segments)

Stack can be held together and mounted with readily available 1/8" "all thread" material.

### MANIFOLDS - OUTLINE DIMENSIONS



O-Ring P/N 890701004 included with Segments. Lubricate "O" Rings with Dow Corning 55 before assembly.



Manifold End Segment R432013812  
Manifold Station Segment R432013813  
Manifold Inlet Segment R432013811

### MANIFOLD INSTALLATION NOTE:

The first and last segment should always be securely mounted to a plate. If more than five valves are used, every third valve segment should also be securely mounted.

No. of Stations	A	B
2	2.89 (73.5)	3.01 (76.5)
3	4.39 (111.5)	4.51 (114.5)
4	5.89 (149.5)	6.00 (152.5)
5	7.38 (187.5)	7.50 (190.5)
6	8.88 (225.5)	9.00 (228.5)
7	10.37 (263.5)	10.49 (266.5)
8	11.87 (301.5)	11.99 (304.5)
9	13.37 (339.5)	13.48 (342.5)
10	14.86 (377.5)	14.98 (380.5)

NOTE: Yellow lock tab on manifold segments are scored. This allows the end to be broken off (if desired), making it tamper resistant, thus requiring a screwdriver to remove valve.

# Series 740 Valves

Accessories

**AVENTICS**<sup>®</sup>

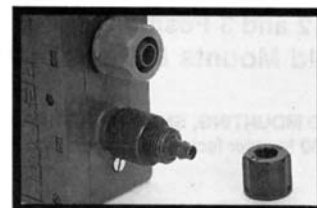
## ACCESSORIES



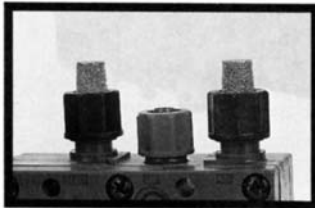
**R432015301**  
Elbow Fitting with nuts for  
3/8" & 5/16" O.D. tubing



**R432015479**  
Reducer Elbow Fitting with nut  
for 1/4" O.D. (.040" wall) tubing



**R432015475**  
Reducer Fitting with nut  
For 1/4" O.D. tubing



**R432013850**  
Exhaust Tube Nut & Silencer  
(2 kits shown)



**8919905502 (3/8", 5/16" or 8 mm)**  
**8919905512 (10 mm)**  
Blanking Cap  
(converts 4-way to 3-way)



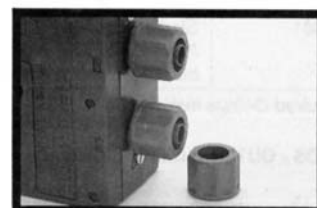
**R432013852**  
Sheer Plug Knockout for  
Stacking



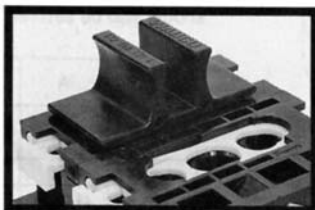
**R432015513**  
Exhaust Fitting Adapter Kit  
(converts the standard exhaust fitting to a  
tube fitting for external piping)



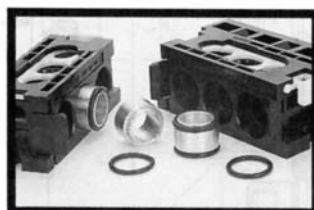
**R432015289**  
Tube Nuts (3 ea.) for 5/16"  
(.040" wall) O.D. nylon tubing  
or 8mm (1mm wall) O.D. poly  
tubing



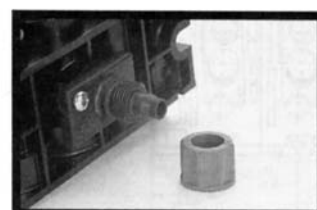
**R432015287**  
Tube Nuts (3 ea.) for 3/8"  
O.D. (.062" wall) poly tubing



**R432015511**  
Manifold Blanking Plate  
(use to block one segment)



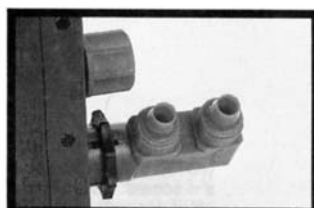
**R432015330**  
Manifold Bushing Kit  
for two supply pressures



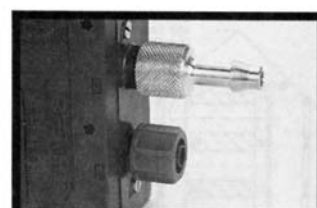
**R432015512**  
Individual Manifold Supply Pres-  
sure Kit-mounts underneath mani-  
fold segment (not included)



**R432015527**  
Double Elbow Fitting for 1/4"  
O.D. tubing



**R432015526**  
Double Elbow Fitting for 3/8" &  
5/16" O.D. tubing



**R432015525**  
Barb Fitting for 1/4" I.D.  
Reinforced Hose

# Series 740 Valves

Repair Kits



## Repair Kits and Parts

Part No.	Old Part No.	Description
R432013884	P -067916-00000	Single Solenoid Body Repair Kit
R432013885	P -067917-00000	Double Solenoid Body Repair Kit (includes 3 position valves also)
R432013854	P -067817-00000	Air Pilot Operator Kit
R432013816	P -067705-K0000	Single Solenoid Body Assembly
R432013814	P -067704-K0000	Double Solenoid Body Assembly
R432015687	P -069541-00000	Solenoid Repair Kit, includes armature, plunger/spring & seal
8994702802	H -899470-02802	Solenoid Retainer Kit
R432013839	P -067782-00000	Valve Latch & Spring
R432013853	P -067816-00000	Valve Manifold Station "O" Ring Kit, (to attach valve to manifold)

## Solenoid Kits

(Includes Armature, Coil, & Mtg. Hardware)

Part No.	Old Part No.	Description
R432015349	P -068648-00000	24 VAC-50/60Hz
R432013840	P -067783-00000	110VAC-50Hz/120VAC-60Hz
R432013841	P -067784-00000	220VAC-50Hz/240VAC-60Hz
R432029180	P -067785-00000	6 VDC
R432013842	P -067786-00000	12 VDC
R432013843	P -067787-00000	24 VDC

## U.L. Recognized & C.S.A. Approved Coils

Part No.	Description
R432034080	12 VDC
R432009779	24 VDC
R432009778	110 VAC-50/60Hz

## Standard Coils

Part No.	Model Number	Description
R432011985	P -048835-00001	110VAC-50Hz/120VAC-60Hz
R432011986	P -048835-00002	220VAC-50Hz/240VAC-60Hz
R432011988	P -048835-00004	12 VDC
R432011989	P -048835-00005	24 VDC
R432011990	P -048835-00006	24 VAC-50/60Hz

## Coils for Corrosion Resistant Valves

Part No.	Model Number	Description
5428457072	H -542845-07072	110VAC-50Hz/120VAC-60Hz
5428457082	H -542845-07082	220VAC-50Hz/240VAC-60Hz
5420507012	H -542050-07012	12 VDC
5450507022	H -542050-07022	24 VDC
5428457022	H -542845-07022	24 VAC-50/60Hz

# NOTICE TO PRODUCT USERS

## 1. WARNING: FLUID MEDIA

AVENTICS pneumatic devices are designed and tested for use with filtered, clean, dry, chemical free air at pressures and temperatures within the specified limits of the device. For use with media other than air or for human life support systems, AVENTICS must be consulted. Hydraulic cylinders are designed for operation with filtered, clean, petroleum based hydraulic fluid; operation using fire-resistant or other special types of fluids may require special packing and seals. Consult the factory.

## 2. WARNING: MATERIAL COMPATIBILITY

Damage to product seals or other parts caused by the use of non-compatible lubricants, oil additives or synthetic lubricants in the air system compressor or line lubrication devices voids the AVENTICS warranty and can result in product failure or other malfunction. See lubrication recommendations below.

**AIR LINE LUBRICANTS!** In service higher than 18 cycles per minute or with continuous flow of air through the device, an air line lubricator is recommended.\* (Do not use line lubrication with vacuum products.) However, the lubricator must be maintained since the oil will wash out the grease, and lack of lubrication will greatly shorten the life expectancy. The oils used in the lubricator must be compatible with the elastomers in the device. The elastomers are normally BUNA-N, NEOPRENE, VITON, SILICONE and HYTREL. AVENTICS recommends the use of only petroleum based oils without synthetic additives, and with an aniline point between 180° F and 210° F.

**COMPRESSOR LUBRICANTS!** All compressors (with the exception of special "oil free" units) pass oil mist or vapor from the internal crankcase lubricating system through to the compressed air. Since even small amounts of non-compatible lubricants can cause severe seal deterioration (which could result in component and system failure) special care should be taken in selecting compatible compressor lubricants.

## 3. WARNING: INSTALLATION AND MOUNTING

The user of these devices must conform to all applicable electrical, mechanical, piping and other codes in the installation, operation or repair of these devices.

**INSTALLATION !** Do not attempt to install, operate or repair these devices without proper training in the technique of working on pneumatic or hydraulic systems and devices, unless under trained supervision.

Compressed air and hydraulic systems contain high levels of stored energy. Do not attempt to connect, disconnect or repair these products when a system is under pressure. Always exhaust or drain the pressure from a system before performing any service work. Failure to do so can result in serious personal injury.

**MOUNTING!** Devices should be mounted and positioned in such a manner that they cannot be accidentally operated.

## 4. WARNING: APPLICATION AND USE OF PRODUCTS

The possibility does exist for any device or accessory to fail to operate properly through misuse, wear or malfunction. The user must consider these possibilities and should provide appropriate safe guards in the application or system design to prevent personal injury or property damage in the event of a malfunction.

## 5. WARNING: CONVERSION, MAINTENANCE AND REPAIR

When a device is disassembled for conversion to a different configuration, maintenance or repair, the device must be tested for leakage and proper operation after being reassembled and prior to installation.

**MAINTENANCE AND REPAIR!** Maintenance periods should be scheduled in accordance with frequency of use and working conditions. All AVENTICS products should provide a minimum of 1,000,000 cycles of maintenance free service when used and lubricated as recommended. However, these products should be visually inspected for defects and given an "in system" operating performance and leakage test once a year. Where devices require a major repair as a result of the one million cycles, one year, or routine inspection, the device must be disassembled, cleaned, inspected, parts replaced as required, rebuilt and tested for leakage and proper operation prior to installation. See individual catalogs for specific cycle life estimates.

## 6. PRODUCT CHANGES

Product changes including specifications, features, designs and availability are subject to change at any time without notice. For critical dimensions or specifications, contact factory.

\*Many AVENTICS pneumatic valves and cylinders can operate with or without air line lubrication; see individual sales catalogs for details.

-Refer to the appropriate service manual for parts and service information, most are available for download from [www.aventics.com/us](http://www.aventics.com/us)

## LIMITATIONS OF WARRANTIES & REMEDIES

AVENTICS warrants its products sold by it to be free from defects in material and workmanship to the following: For twelve months after shipment AVENTICS will repair or replace (F.O.B. our works), at its option, any equipment which under normal conditions of use and service proves to be defective in material or workmanship at no charge to the purchaser. No charge will be made for labor with respect to defects covered by this Warranty, provided that the work is done by AVENTICS or any of its authorized service facilities. However, this Warranty does not cover expenses incurred in the removal and reinstallation of any product, nor any downtime incurred, whether or not proved defective.

All repairs and replacement parts provided under this Warranty policy will assume the identity, for warranty purposes, of the part replaced, and the warranty on such replacement parts will expire when the warranty on the original part would have expired. Claims must be submitted within thirty days of the failure or be subject to rejection.

This Warranty is not transferable beyond the first using purchaser. Specifically, excluded from this Warranty are failures caused by misuse, neglect, abuse, improper operation or filtration, extreme temperatures, or unauthorized service or parts. This Warranty also excludes the use of lubricants, fluids or air line additives that are not compatible with seals or diaphragms used in the products. This Warranty sets out the purchaser's exclusive remedies with respect to products covered by it, whether for negligence or otherwise. Neither, AVENTICS nor any of its affiliates will be liable for consequential or incidental damages or other losses or expenses incurred by reason of the use or sale of such products. Our liability (except as to title) arising out of the sale, use or operation of any product or parts, whether on warranty, contract or negligence (including claims for consequential or incidental damage) shall not in any event exceed the cost of replacing the defective products and, upon expiration of the warranted period as herein provided, all such liability is terminated. THIS WARRANTY IS IN LIEU OF ALL OTHER WARRANTIES, EXPRESS OR IMPLIED, WHETHER FOR MERCHANTABILITY OR FITNESS FOR A PARTICULAR PURPOSE OR OTHERWISE. No attempt to alter, amend or extend this Warranty shall be effective unless authorized in writing by an officer of AVENTICS Corporation.

AVENTICS reserves the right to discontinue manufacture of any product, or change product materials, design or specifications without notice.

**AVENTICS Corporation**

1953 Mercer Road  
Lexington, KY 40514  
Tel 859.254.8031  
Fax 800.489.1488  
[www.aventics.com/us](http://www.aventics.com/us)  
[info.us@aventics.com](mailto:info.us@aventics.com)



**AVENTICS Incorporated**

5515 North Service Rd  
Suite #100  
Burlington, Ontario L7L 6A6  
Tel 905.332.0399  
Fax 905.332.8596  
[www.aventics.com/ca](http://www.aventics.com/ca)  
[info.ca@aventics.com](mailto:info.ca@aventics.com)



Further contacts:

[www.aventics.com/en/contact](http://www.aventics.com/en/contact)

The data specified only serve to describe the product. No statements concerning a certain condition or suitability for a certain application can be derived from our information. The information given does not release the user from the obligation of own judgment and verification. It must be remembered that our products are subject to a natural process of wear and aging.