

# MMS Tote & Platform Lift

## MMS-30

### Service Manual



LIFT PRODUCTS INC  
PO BOX 349  
ELM GROVE WI 53122  
262-521-5720 FAX 262-521-5725  
Toll Free 877-543-8776

Model: MMS-30

S/N \_\_\_\_\_

Customer \_\_\_\_\_

**LIFT PRODUCTS, INC.**

# LIFT PRODUCTS, INC.

## REGISTRATION INFORMATION

(To validate your warranty and receive updated service bulletins, please complete this form)

Date \_\_\_\_\_ Model No. \_\_\_\_\_

How did you first hear of Lift Products?

\_\_\_\_ Magazine Ad (Specify which magazine) \_\_\_\_\_  
\_\_\_\_ Recommended by a dealer (Name of Dealer) \_\_\_\_\_  
\_\_\_\_ Received information in the mail \_\_\_\_\_  
\_\_\_\_ Internet \_\_\_\_\_  
\_\_\_\_ Other (Please specify) \_\_\_\_\_

What factors caused you to choose Lift Products? \_\_\_\_\_

\_\_\_\_\_  
\_\_\_\_\_

Describe how and where products are being used? \_\_\_\_\_

\_\_\_\_\_  
\_\_\_\_\_

Name of person completing this form \_\_\_\_\_

Title \_\_\_\_\_

Company \_\_\_\_\_

Street Address \_\_\_\_\_

City, State, Zip \_\_\_\_\_

Phone \_\_\_\_\_ Fax No. \_\_\_\_\_

Purchased From:

Name of Dealer \_\_\_\_\_

Street Address \_\_\_\_\_

City, State, Zip \_\_\_\_\_

Phone No. \_\_\_\_\_ Fax No. \_\_\_\_\_

Please fax this form to 262-521-5725.

## **CONTENTS**

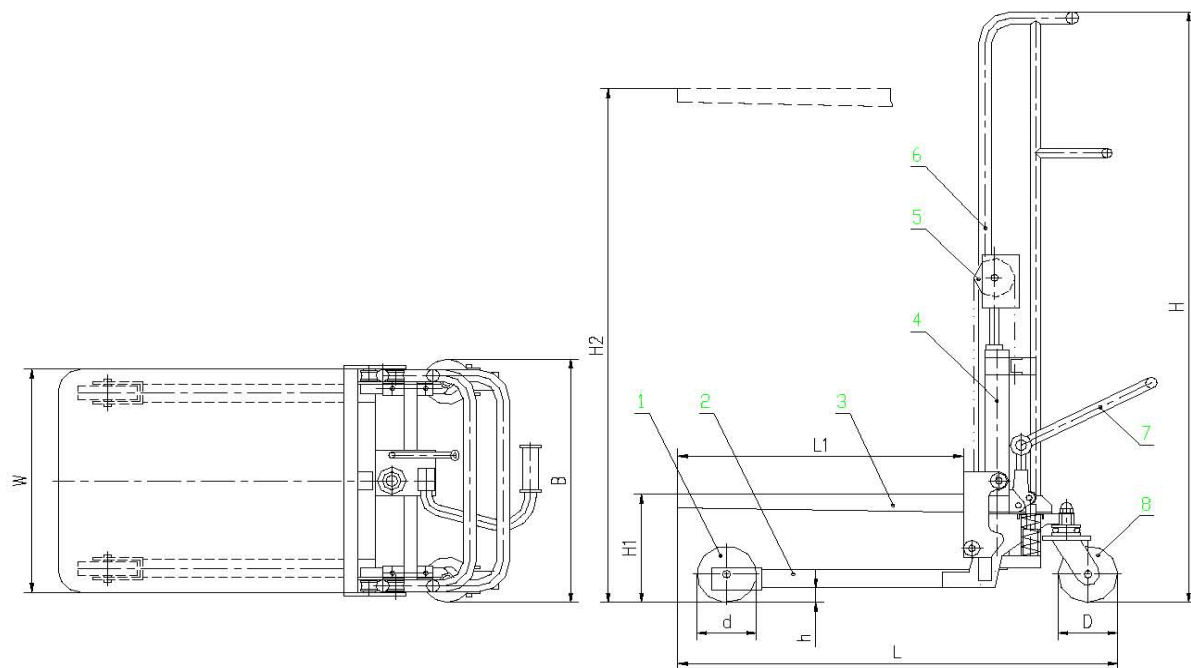
1. External Shape & Parameter Form
2. Names of Parts
3. Assembly and Debug
4. Attention and Warning
5. Operational Instructions
6. Daily Maintenance and Regular Inspection
7. Hydraulic Principle Drawing
8. Display of the Combination
9. Lists of the Parts

Thank you very much for using this series of platform lifts.

This operation manual has a description of the right operational methods to ensure safety and the maintenance methods to extend the use lifetime. The operator shall read carefully and completely understand it before using the platform lift.

This series of platform lifts are mainly used to load, lift and pile goods or take down goods from a certain height on the flat and solid floor. It is widely used in various plants, markets and warehouses.

## 1. External Shape and Parameter Form



Technical parameters of PF series of platform lifts.

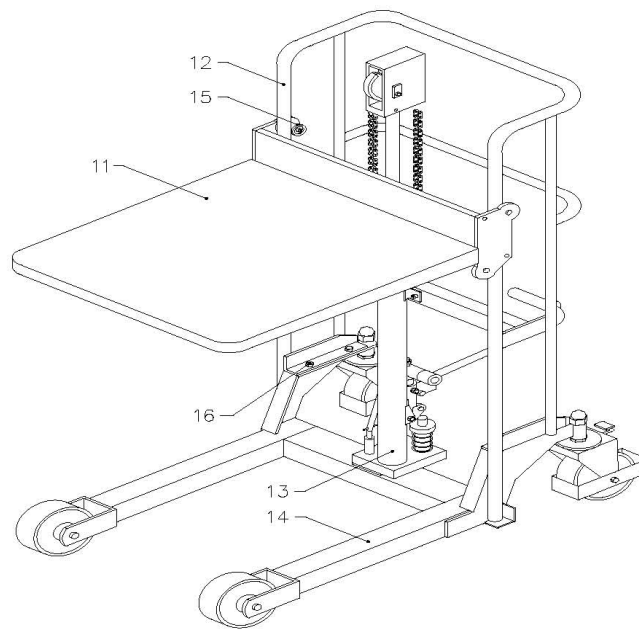
Model		MMS-30
Capacity		880 Lbs.
Table Height	Lowered	8.875"
	Raised	53"
Platform Size (LxW)		25" x 22.75"
Overall Size (LxWxH)		38" x 22.5" x 57.5"
Casters		6"
Pumps to Full Lift		49
Weight		183 Lbs.

## 2. Name of the Parts

1. Front Wheel
2. Chassis Assembly
3. Work Platform
4. Cylinder Assembly
5. Chains and Wheel
6. Slideway Handrail Assembly
7. Footstep Lever
- Back Wheel

## 3. Installation and Debug

The parts are packed when delivered out of the factory. The user can install quickly and easily according to the part numbers in the following order. Please have two 13, 14, or 17 spanners and other necessary tools besides when fixing.



1. Confirm No. 11 is the platform assembly; No. 12, 13 are the handrail and cylinder assembly; No. 14 is the chassis assembly; No. 16 is the connecting bolts (4 sets). Confirm all these are available.
2. On the float floor, put No. 11 the platform on No. 14 the chassis according to the drawing.
3. Make No. 12 handrail go through No. 11 platforms and four rolling wheels 15, till the position of No. 14 chassis angle iron. And also ensure the positioning hole on the bottom of the cylinder pump plate is identical with the positioning bolt of No. 14 chassis cylinder. Connect tightly and deaden No. 12 the handrail and No. 14 chassis with No. 16 the bolts.
4. Connect tightly the bolts of No. 13 cylinder chains and No. 11 platform connecting plates, and use a split safe.
5. The platform lift height after being installed can be adjusted the parameter

6. Make sure all the parts are fixed and the bolts connected tightly and have been adjusted well.
7. When operated without load, the platform lift raised and falls stably and normally.
8. When operated with the rated load, the platform lift rises and falls stably, the foot wheels move flexibly and the brake works effectively.

#### **4. Attention and Warning**

1. The platform lift shall be used on the flat and hard floor.
2. The load shall not exceed the max. load. Transport goods strictly according to the load curved to assure the load balance.

#### **5. Operational Instructions**

1. Lock the brake. And close the falling valve pole.
2. Operate the rising footstep pole to make the platform rise stably to the max. height. Turn open the falling valve pole, and the platforms fall. Turn and close the falling valve pole so that the platforms can stop at any height without sliding down.
3. When the load exceeds 1.2 times of the rated load, the safety valve of the cylinder works so that the platforms cannot rise and the safety of the operation and equipment are assured.
4. When driving the platform lift load, make sure the platforms fall to the lowest position to ensure safety.
5. The falling speed of the platforms is adjustable by adjusting the angle of the positioning ring on the falling valve pole.
6. Don't operate the rising footstep pole quickly. Otherwise, the cylinder will run empty.
7. The falling valve shall be turned open slowly with heavy load to make sure the platforms fall slowly. Otherwise, dangers will happen.
8. When the rising operation or stops at any height are done with heavy loads, the falling pole shall be closed tightly. Otherwise, the platforms will fall.

#### **9. Daily Maintenance and Regular Inspection**

1. Daily check if there are any deformations, looseness or abnormal noises of the connecting bolts, wheels, rolling wheels, lifting chains and wheel, the parts of hydraulic cylinder, moving parts.
2. Daily check if there is any oil leakage of the hydraulic system.
3. Check monthly the wear and tear of the platforms, rolling wheels, chains and wheel.
4. After the lifting cylinder runs for 20 hours accumulative in the beginning. The hydraulic oil shall be charged. Afterwards the oil shall be changed once every 300 hours.

When the accumulated hours are not so much, change the oil once every 18 months.

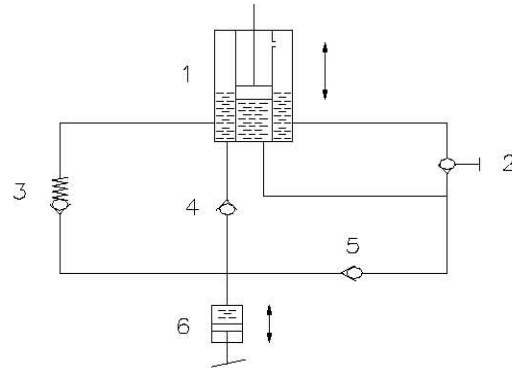
**Please fill in the specified hydraulic oil at the following temperatures listed below:**

*When changing the oil, adjust the pole of the pillar piston to the lowest position. The oil shall be filled to the position of the filling hole.*

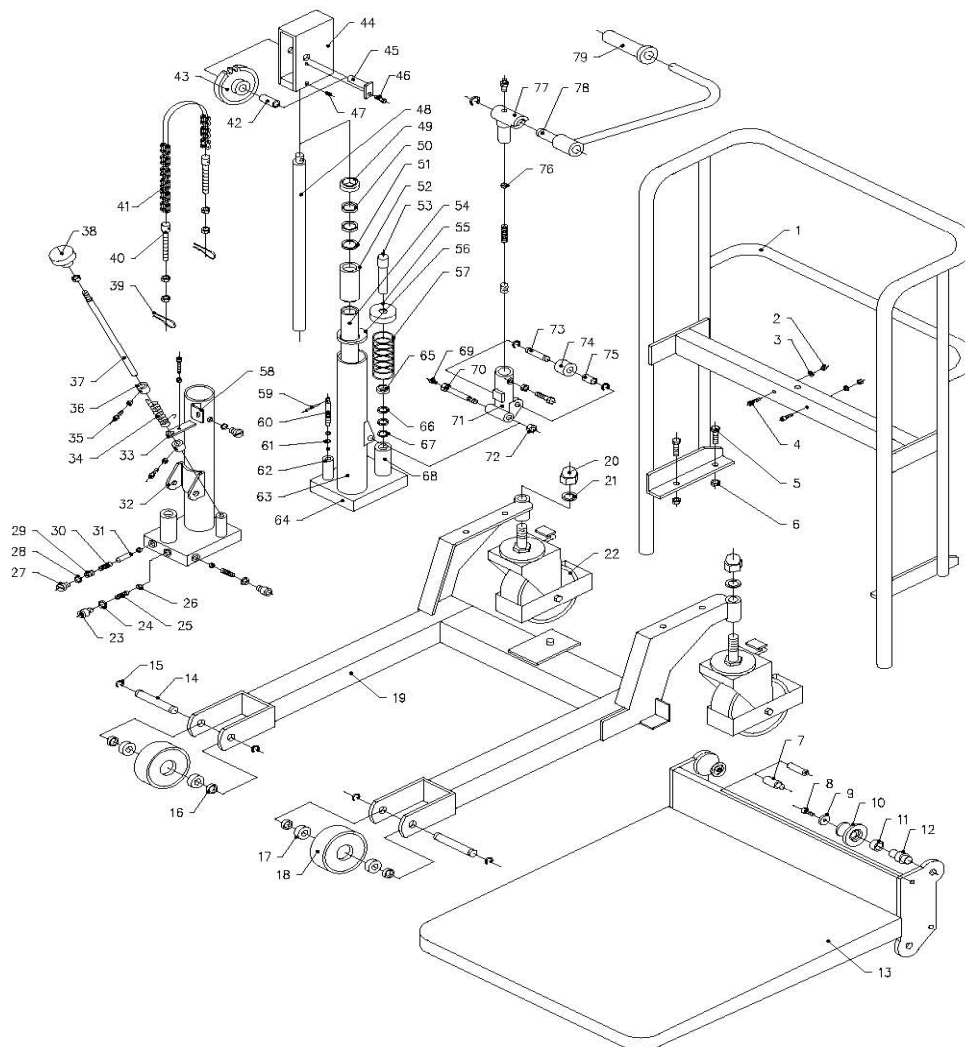
Temperature	Hydraulic Oil
-5°C ~ +45°C	L-HM68 hydraulic oil (equivalent to ISOVG68)
-15°C ~ -5°C	L-HM46 hydraulic oil (equivalent to ISOVG46)

## 7. Hydraulic Principle Drawing

1. Out-pushing Cylinder
2. Turning Lifting and Falling Valve
3. Safety Valve
4. Oil Returning Valve
5. Work Valve
6. Work Cylinder



## 8. Exploded View and Part List



## PARTS LIST FOR MMS-30

NO	Name	QTY	REMARK	NO	NAME	QTY	REMARK
1	Slideway HandRail	1		41	Roller Chains	1	
2	Nut	2		42	Oil-Free Bearing	1	
3	Washer	2		43	Chains & Wheel	1	
4	Internal Hex Bolt	2		44	Chains Cover	1	
5	Hex Bolt	4		45	Chains Axle	1	
6	Nut	4		46	Bolt	1	
7	Spin	4		47	Bolt	1	
8	Hex Bolt	4		48	Piston Pole	1	
9	Washer	4		49	Dust-Proof Ring	1	Damageable
10	Rolling Wheel	4		50	O-Ring	2	Damageable
11	Oil-Free Bearing	4		51	Nylon Shield Ring	1	
12	RB Axle	4		52	Inside Piston Sleeve	1	
13	Fixed Platform	1		53	Pump Pole	1	
14	Front Wheel Axle	2		54	Internal Cylinder	1	
15	Split Shield Ring	4		55	Pump Spring Cover	1	
16	Washer	4		56	Eccentric Sealing	1	
17	Bearing	4		57	Oil Pump Spring	1	
18	Front Wheel	2		58	Fixed Ear	2	
19	Chassis Assembly	1		59	Pillar Spin	1	
20	Lid Nut	2		60	Valve Inner	1	
21	Internal-Teethed	2		61	O-Ring	2	Damageable
22	Back Wheel	2		62	Valve Pole Pipe	1	
23	Internal Hex Bolt	2		63	Outside Cylinder	1	
24	Copper Washer	2		64	Pump Plate	1	
25	Cone Spring	2		65	Dust-Proof Ring	1	Damageable
26	Steel Ball	4		66	O-Ring	2	Damageable
27	Bolt Plug	2		67	Nylon Ring	1	
28	O-Ring	2		68	Pump Glove	1	
29	Bolt	1	Damageable	69	Oil Cup	2	
30	Spring	1		70	Short Axle	1	
31	Short Pin	1		71	Pump Base	1	
32	Base Connecting	1		72	Nut	1	



## PARTS LIST FOR MMS-30

NO	Name	QTY	REMARK	NO	NAME	QTY	REMARK
33	Positioning Plate	1		73	Pump Pin Axle	1	
34	Torsion Spring	1		74	Pump Ring	1	
35	Positioning Bolt	2		75	Oil-Free Bearing	1	
36	Positioning Ring	2		76	Steel Ball	1	
37	Single-Direction	1		77	Axle Sleeve	1	
38	Handle	1		78	Foot Step Lever	1	
39	Split Pin	2		79	Rubber Glove	1	
40	Chains Bolt	2					