

Document Number: 040-00076 <input type="button" value="Form Instructions"/>	Rev	Description	Date	ECO#	
	1	SERVICE MANUAL	2/14/08	00239	
Title	SERVICE MANUAL, MAIN POWER CIRCUIT BREAKER REPLACEMENT				
Operation Description	Sub Assembly				
Standards	Man Occup.	Machine Occup.	Cycle Time	Setup Time	Batch Qty
Equipment List	Equipment	Manufacturer		Qty	
	1- Main Power Circuit Breaker	T3 Motion		1	
	2- 5/32 inch Allen wrench	Any		1	
	3- Small Phillips screwdriver	Any		1	
	4- Heat gun	Any		1	
	5- 7/16 inch wrench	Any		1	
	6- 7/16 inch socket with ratchet	Any		1	
	7- Knife or razor blade	Any		1	
Reference Docs	Document #	Description	Document #	Description	
Related Files					
RESP ENGR	Mark Jones				
ALL TEXT AND GRAPHICS COMPUTER GENERATED, DO NOT REVISE MANUALLY	T3MOTION, INC. PROPRIETARY INFORMATION				
	This document is the sole property of T3MOTION, Inc. The release of data contained in this document and the reproduction of this document in whole or in part, without the written permission of T3MOTION, Inc. is prohibited.			SHEET 1 of 9	

SERVICE MANUAL

Item#	Part #	Description	Qty
1	100-00005	Circuit Breaker	1



Serious electrical shock can occur if precautions are not followed.



- **ALWAYS TURN OFF POWER BREAKER IN GLOVE BOX AND REMOVE POWER MODULES BEFORE PERFORMING ANY ELECTRICAL WORK.**



Power breaker in glove box



Power modules

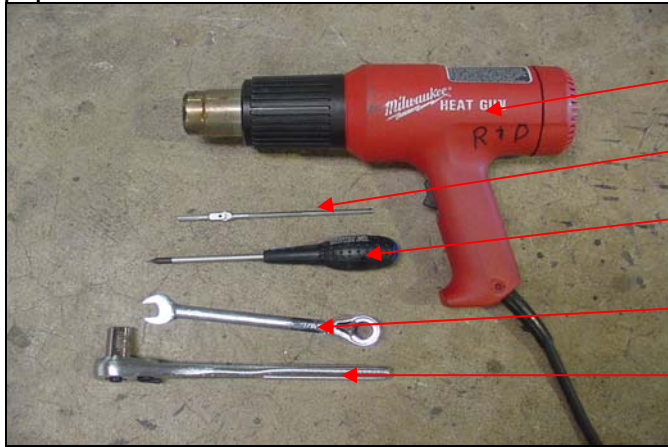
- **ALSO SET THE PARKING BRAKE PRIOR TO ANY WORK.**



Parking brake

WORK INSTRUCTIONS:

- 1.0 Recommended tools for replacing the main power circuit breaker assembly. See equipment table above for the details.



- 4- Heat Gun
- 2- 5/32 Allen wrench
- 3- Small Phillips screwdriver
- 5- 7/16 wrench
- 6- 7/16 socket with ratchet.

- 2.0 With a 5/32 Allen wrench, remove the fastener in the glove box that anchors the power breaker.



- 3.0 Reach through one of the power module openings and loosen the two 7/16 nuts that hold the power cables to the power breaker.



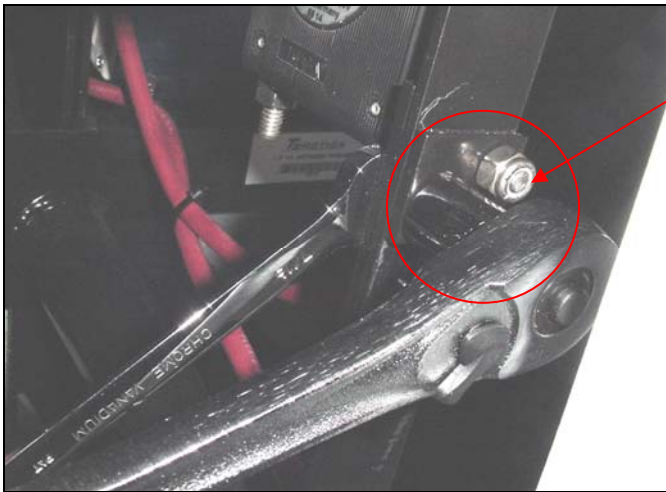
Remove the two nuts and lock washers by hand to avoid dropping them inside the unit.



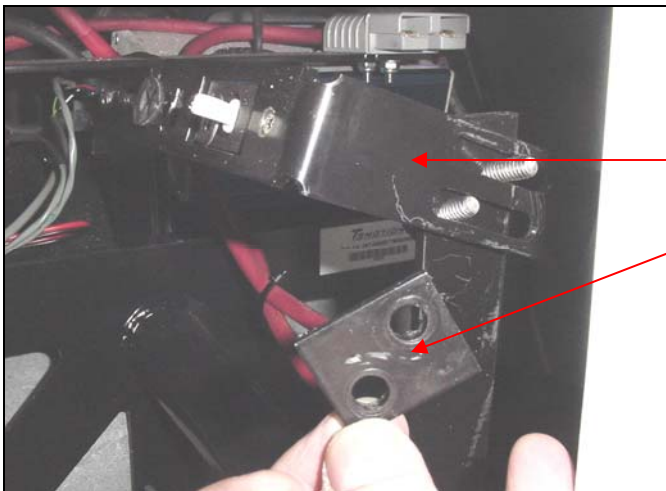
4.0 Slice and remove the heat shrink tubing.



4.1 Using both the 7/16 wrench and 7/16 socket with ratchet, remove the two nylock nuts.

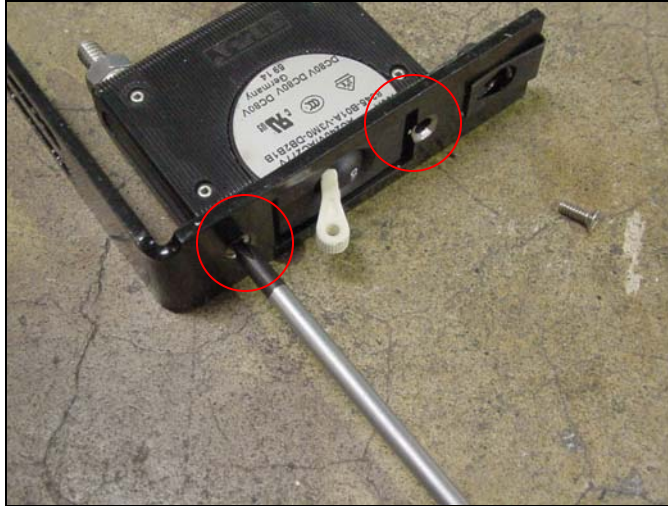


4.2 Remove the mounting plate and twist the breaker switch and mounting bracket to the left as shown then remove. Do not force.



Mounting bracket
Mounting plate

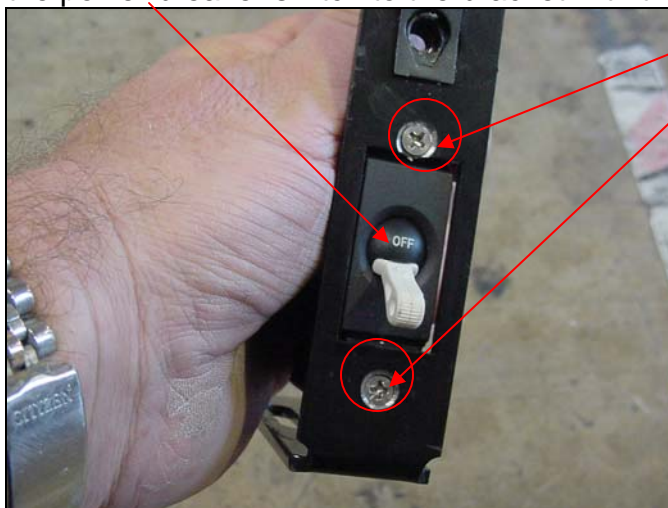
4.3 Remove the two small Phillips head screws that hold the switch to the bracket.



5.0 These are the replacement parts; a power breaker and some heat shrink tubing.



6.0 Mount the power breaker switch to the bracket with the Phillips head screws.



- 6.1 Slide the heat shrink tubing onto the upright part of the frame the switch bracket mounts to.



- 6.2 Install the switch and bracket by putting it over the bolts at an angle.



- 6.3 Then rotating it to the right.



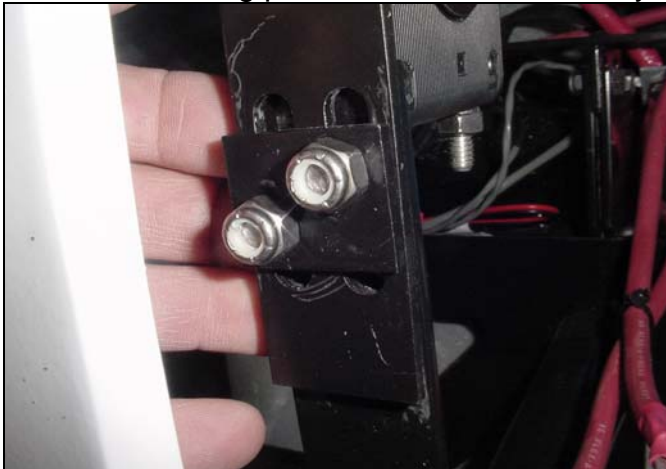
- 6.4 And lining it up. Then slide the switch and bracket up into place in the glove box switch opening.



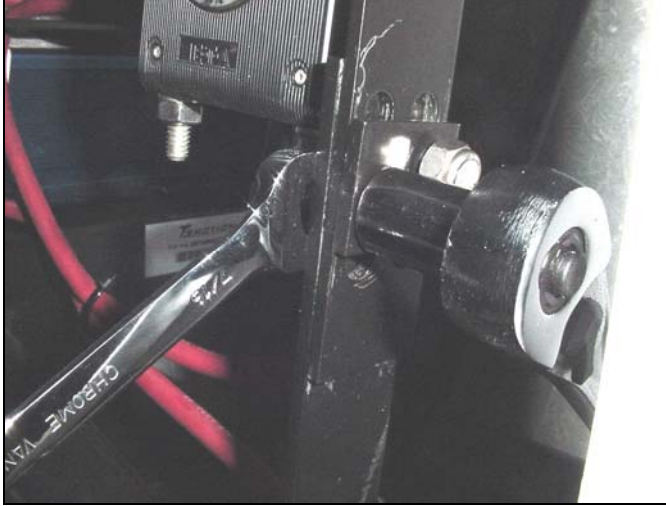
- 6.5 Thread the 5/32 Allen fastener into the bracket and snug it down. Make sure the switch is aligned and does not bind.



- 6.6 Now install the mounting plate and thread the two nylock nuts onto the two bolts.



6.7 And tighten them with both of the 7/16 wrenches you used to remove them.



7.1 Reattach the power cables with the 7/16 nuts and lock washers.



8.0 Slide heat shrink tubing up and over the mounting plate and nuts and using the heat gun, shrink it.

