

Installation

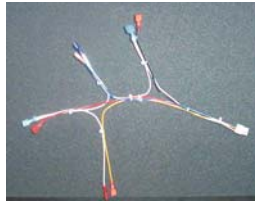
“Louisiana” Main Wire Harness and Control

Retro Fitting Pre 2007 Colonial and Estate models

The “Louisiana” electronic control and main wire harness can be used together to replace the analog control and temperature sensors used in the “Little Louie”, “Kentwood” and “Greenwood” models. The temperature sensors are replaced with pre-programmed software within the new control board.

PARTS SUPPLIED

- 1 - “Louisiana” Control Board and Housing
- 1 - “Louisiana” Main Wire Harness



TOOLS REQUIRED

- Phillips Screwdriver
- Straight Head Screwdriver
- Needle Nose Pliers

Note: Always disconnect power before performing the installation

INSTALLATION STEPS

1. **Unplug grill’s power cord from wall outlet.**
2. **To gain access to the working component area:** (diagram B)
 - locate locking mechanism found on the rear access panel.
 - using a straight screwdriver, turn mechanism “Counter Clockwise” a full turn. (diagram A)
 - rear access should drop open.
3. **Disconnect the control board and box from the left support shelf:** (diagram C)
 - remove the 2 screws holding the board to the shelf bracket.
 - disconnect the control board from the main wire harness by gently pulling apart the plastic moxex connector.
4. **Remove the “Stainless Side Shelf” covering the control and wiring:** (diagram C)
 - remove the 1 or 2 #8/32 phillip head screws attaching the top shelf to the side wall of the grill.
 - slide the top away from the grill, to disconnect from the support shelf.



Installation

“Louisiana” Main Wire Harness and Control

Retro Fitting Pre 2007 Colonial and Estate models

Note: Always disconnect power before performing the installation

INSTALLATION STEPS . . CONT

5. Disconnect existing main wire harness: (dia. C)

- TIP:** The “Little Louie” is a smaller, tighter area, for speed and ease, loosen the mounting screws holding the fan to the frame. (dia. A)
- carefully pull the molex connector through the rubber grommet, (dia. B) located on the side of grill, towards the inside component compartment.
 - carefully disconnect the spade connectors from the auger motor, fan, igniter and the two (2) temperature discs. Hold each connector firmly and wiggle lose.
 - disconnect the spade connectors and the ground wire connection from the power source.

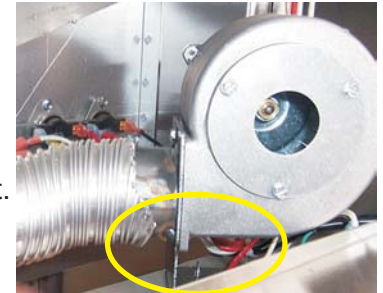


Diagram A

6. Install the new ‘Louisiana’ main wire harness:

Note: The 2 (two) temperature discs are no longer used.
Leave attached to the grill. (dia. D)

- from inside the component area push the molex connector through the rubber grommet out towards the side shelf
- install the spade connectors starting with the igniter, then auger motor, and power cord and ground wire. (see chart below or next page)
- install the new spade connectors to the fan

Little Louie - ensure proper connection, then reinstall fan
Kentwood / Greenwood - it is much easier to access the connection from the bottomside of the grill and from inside the cart or cabinet.



Diagram B

Connection	Wire Color	Lead From
Combustion / Cooling Fan	Blue Double White	Control Board Power Igniter
Auger Feed Motor	Yellow White	Control Board Power/Igniter
Igniter	Red Double White	Control Board Combustion/Cooling Fan Auger Feed Motor
Power Cord	Black Double White	Control Board Control Board Combustion/Cooling Fan

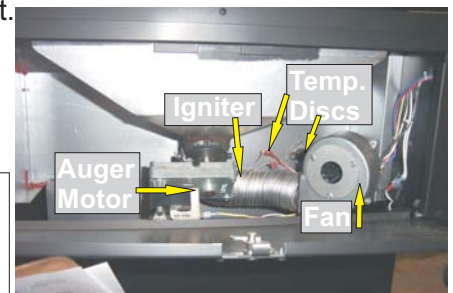


Diagram C



Diagram D

Installation

“Louisiana” Main Wire Harness and Control

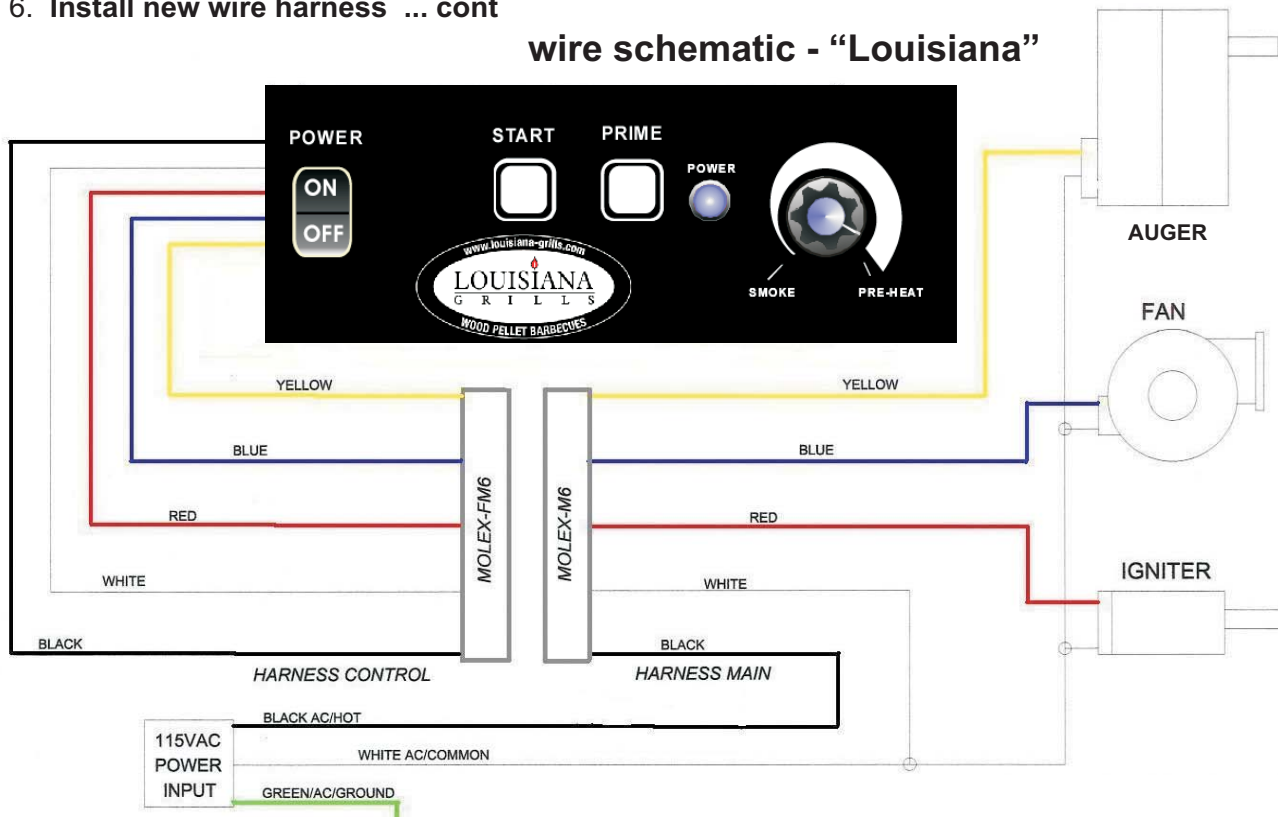
Retro Fitting Pre 2007 Colonial and Estate models

Note: Always disconnect power before performing the installation

INSTALLATION STEPS . . . CONT

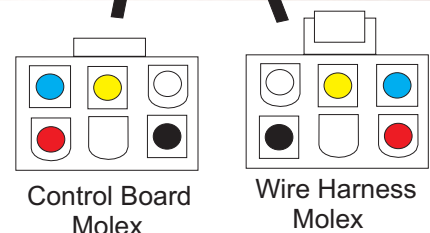
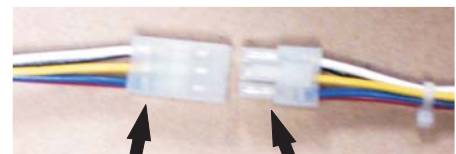
6. Install new wire harness ... cont

wire schematic - “Louisiana”



7. Install the new ‘Louisiana’ Control Board

- reconnect the main wire harness and control board.
When connecting the molex connectors together, check for consistency in the wire colors. eg yellow to yellow ensure the wires are running through the proper plastic hangers.
- re-install the 2 (two) screws mounting the board and protective box to the grill.



8. Test Drive - before replacing all the grilling components.

- reconnect the power cord to a grounded electrical outlet.
- Push the POWER switch to “ON” - the fan should start to run.
- Press and hold the PRIME touch pad - the “Paddle Wheel” should turn.
- Press the START touch pad - igniter should start to glow within 1 to 2 minutes.

9. Ready to “Savor The Flavor”.



Louisiana Control Board

Board Functions

POWER SWITCH

Used to turn power to the smokin grill "ON" and starts the Fan. Used to activate the "SHUT DOWN" of the grill.

START TOUCH PAD

Used to activate the "START UP" mode of the smokin grill. This illuminates the blue POWER LED, turns on the AUTO IGNITER, and starts the FUEL FEED system.



PRIME TOUCH PAD

When touch pad is pressed and held, the FUEL FEED system will turn and feed more wood pellets to the burn grate. This can be used to add more fuel just before opening the grill lid, to help with quicker heat recovery. It can also be used to add more fuel while smoking, to increase the smoke intensity.

POWER LED

Will illuminate blue when the POWER SWITCH is on and the START touch pad has been pushed. Will continue to stay illuminated until the POWER SWITCH has been pushed OFF and the board has completed the automatic 15 minute "SHUT DOWN" mode..

FEED POTENTIOMETER OR TEMPERATURE CONTROL

Used to control the frequency the wood pellet fuel is feed to the burn grate, thus effecting the heat or smoke output. The FEED POTENTIOMETER is **not** active when the smokin grill is in the "7 MINUTE START UP" mode.

HOW THE BOARD WORKS - 101.

Always check the burn pot, burn grate, igniter holes, flame protector, cooking surfaces, hopper and wood pellet fuel before starting or using your smokin grill.

START UP PROCEDURE

Upon turning the POWER to the "ON" position, setting the FEED POTENTIOMETER to the "PRE-HEAT" position, then pressing START touch pad, the board will activate the "START UP" mode. "START UP" will start the cooling fan, the feed system and the igniter. The "START UP" mode is for 7 minutes and the FEED rate is PREDETERMINED by the control software and the igniter will "GLOW" for the entire procedure.

OPERATING MODE

When the "START UP" mode is complete, the FEED POTENTIOMETER is fully functional. The feed system is designed to feed the fuel for 3 seconds then stop feeding at PRESET TIMES managed through the POTENTIOMETER. The "OFF" times range from 25 seconds, for "SMOKE" to 2 seconds for "PRE HEAT". Because the all natural wood pellet fuel is dry and consistent, it is easy to keep a close to constant temperature. Keep in mind that all Louisiana Wood Pellet Grills are designed to operate with the lid closed and that external temperatures, wind, rain and humidity will effect cooking times and heat output.

SHUT DOWN PROCEDURE

When finished "Savoring the Flavor" simply push the POWER switch to the "OFF" position. The control will begin a 15 minute cool down cycle by stopping the FEED system from running, while keeping the FAN running to cool the smokin grill. If you do find more food to grill, you can turn the POWER switch to the "ON" position within the first 3 minutes and the unit will continue to operate as normal. If you miss the 3 minute window, you must go through the START UP PROCEDURE.

Louisiana Control Board

START UP PROCEDURE - Automatic

NOTE: Always check the burn pot, burn grate, igniter holes, flame protector, cooking surfaces hopper and wood pellet fuel before starting or using your smokin grill.

1. Ensure the POWER switch is in the OFF position.
2. Plug the power cord into a 110 Volt grounded outlet. Do not break the ground end off the cord or use a non-grounded plug-in or extension cord.
3. Open the hopper lid. Ensure that there are no foreign objects in the hopper or feed system. Fill the hopper with all natural flavored wood pellets.
4. Turn the FEED control to PREHEAT.
5. Switch the POWER to the "ON" position, then press the START touch pad.



The "START UP" mode will begin.

The FEED system will begin to feed fuel at the preset software rate, the igniter will begin to "glow", and the fan will begin to operate, both to cool the hopper and cause the pellets to burn.

The "START UP" mode is timed to last 7 minutes.

6. Always allow the grill to PREHEAT before adjusting the temperature to the desired output.

START UP PROCEDURE - Manual (if igniter fails)

1. Ensure the POWER switch is in the OFF position.
2. Plug the power cord into a 110 Volt grounded outlet. Do not break the ground end off the cord or use a non-grounded plug-in or extension cord.
3. Open the hopper lid. Ensure that there are no foreign objects in the hopper or feed system. Fill the hopper with all natural flavored wood pellets
4. Remove the cooking grids, flavor guard system and the U shaped flame guard (if equipped with one) to expose the burn grate in the bottom of the unit.
5. Place two generous handfuls of pellets into the burn grate.
6. Squirt gelled fire starter, or other approved pellet starter, into the burn grate over the top of the pellets.
7. Light the starter using a long fireplace match or long lighter.
WARNING: NEVER ATTEMPT TO ADD MORE STARTER INTO A FIRE THAT IS ALREADY BURNING OR INTO A HOT BURNGRATE. YOU COULD EXPERIENCE A BURN BACK AND YOU COULD GET SERIOUSLY BURNT.
8. Allow the STARTER to burn for 3 to 5 minutes.
9. Replace the flame guard (if supplied), the flavor guard and the cooking grids.
10. Follow steps 4 to 6 found in AUTOMATIC.

SHUT DOWN PROCEDURE

1. Allow the grill to run for 5 to 10 minutes before turning OFF. This cooks off any foods that might attract wild life or unwanted visitors.
2. Switch the POWER to the "OFF" position.
3. After the 15 minute "SHUT DOWN" cycle is complete the POWER LED and FAN will turn OFF.