

CONFIDENTIAL

This document contains Nokia confidential material. This material cannot be shared except with persons that have a valid business reason to read this content. You are personally responsible to ensure recipients of this document are aware of information handling guidelines.

Service Manual for L1 and L2

Nokia XL Dual SIM

RM-1030, RM-1042

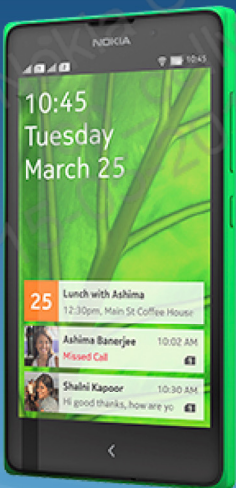
Key features

- Fastlane to Android™ apps
- Dual SIM support
- 5.0" Display
- 1 GHz Dual-core CPU
- 5 MP Camera

Version 1.0

Send feedback

- Recommend Change in KICS
- Rate this page in KICS
- E-mail
careacademy@nokia.com



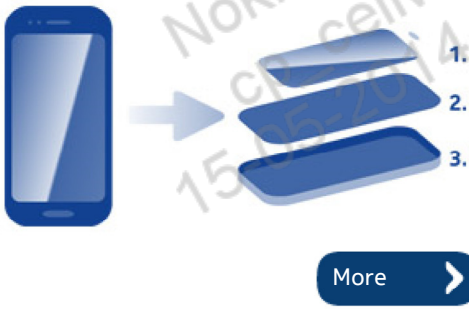
CHECK THE REPAIR POLICY BEFORE PERFORMING ANY MECHANICAL REPAIR ON SERVICE LEVEL 1&2!

Exploded view



More >

Disassembly steps



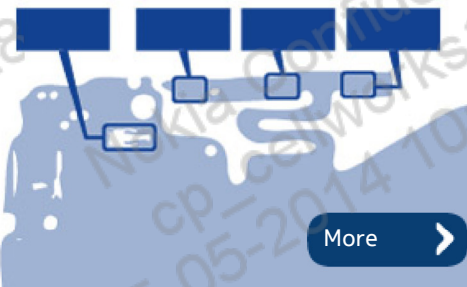
More >

Assembly hints



More >

Solder components



More >

Service devices



More >

Product controls and interfaces



More >

Service concept



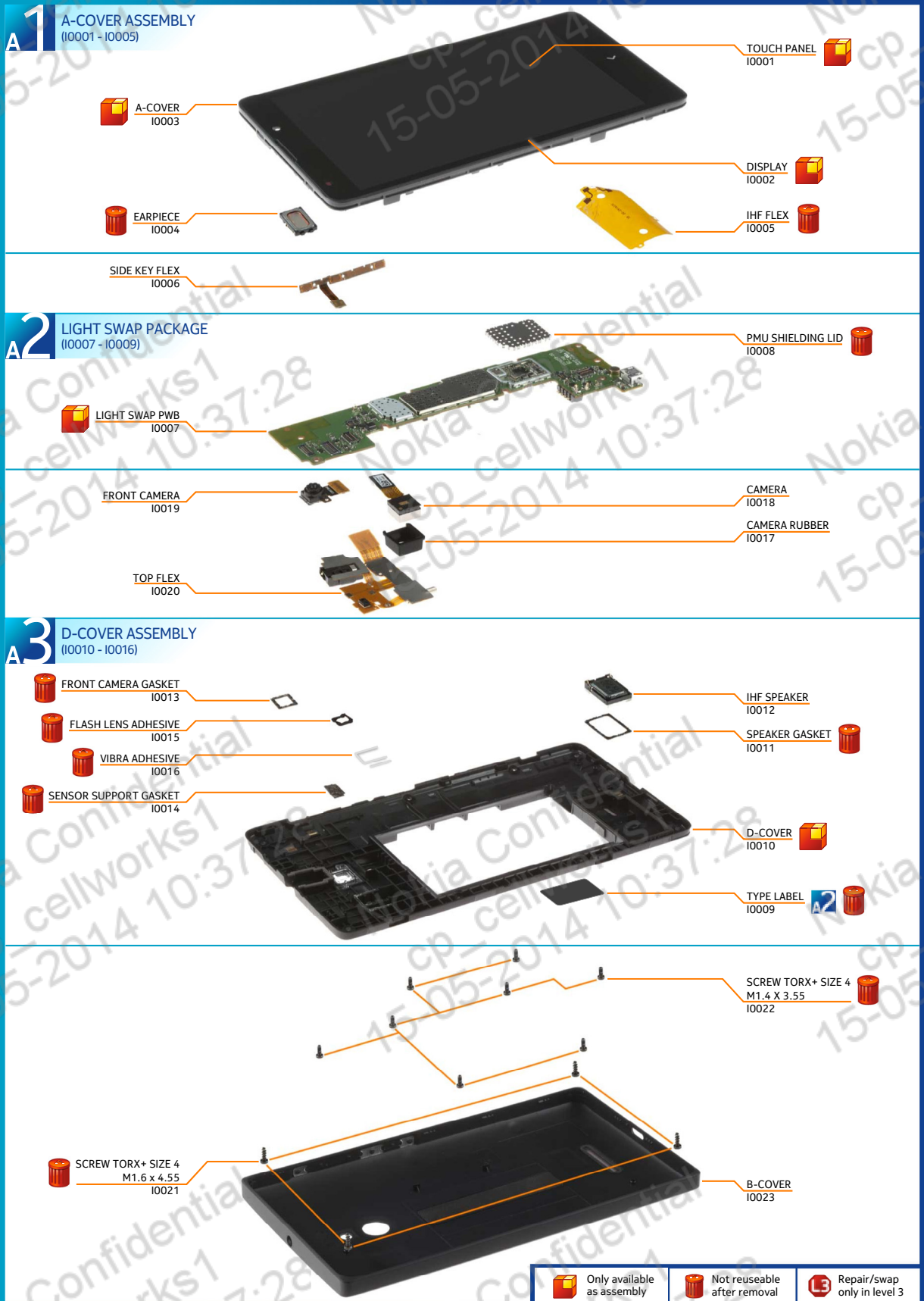
More >

Phone reset



More >

Version	Date	Description
1.0	29.04.2014	First published version





1) For disassembling you need the Nokia Standard toolkit version 2. You will also need an AV jack.



2) Protect the A-COVER with protective film.



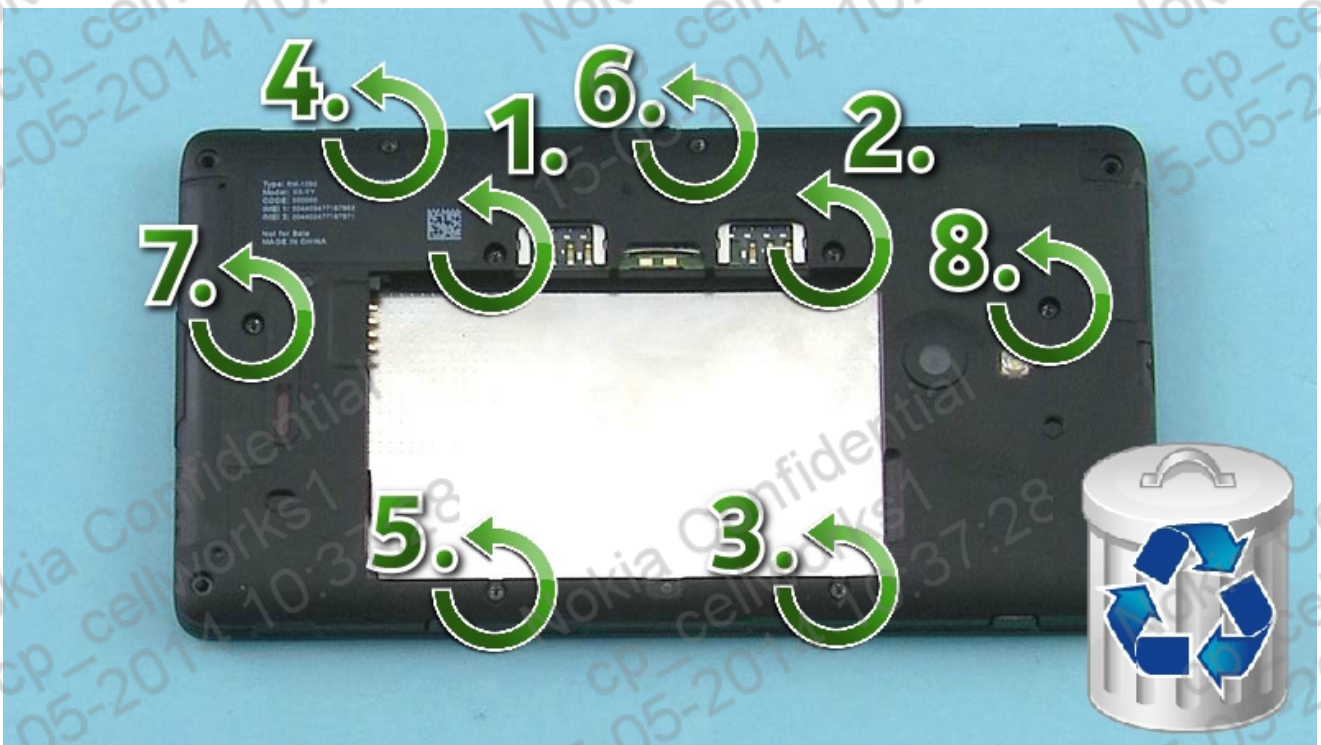
3) Release the B-COVER by pushing down the bottom corners as shown.



4) Remove the B-COVER.



5) Unscrew the four Torx+ size 4 screws in the order shown. Do not use them again. Discard them.



6) Unscrew the eight Torx+ size 4 screws in the order shown. Do not use them again. Discard them.



7) Start releasing the D-COVER by first releasing the two shown clips on the left side of the device with the SRT-6. Start from the top.



8) Then slide the SRT-6 along the bottom end and release the two shown clips.



9) Then open the two shown clips on the right side.



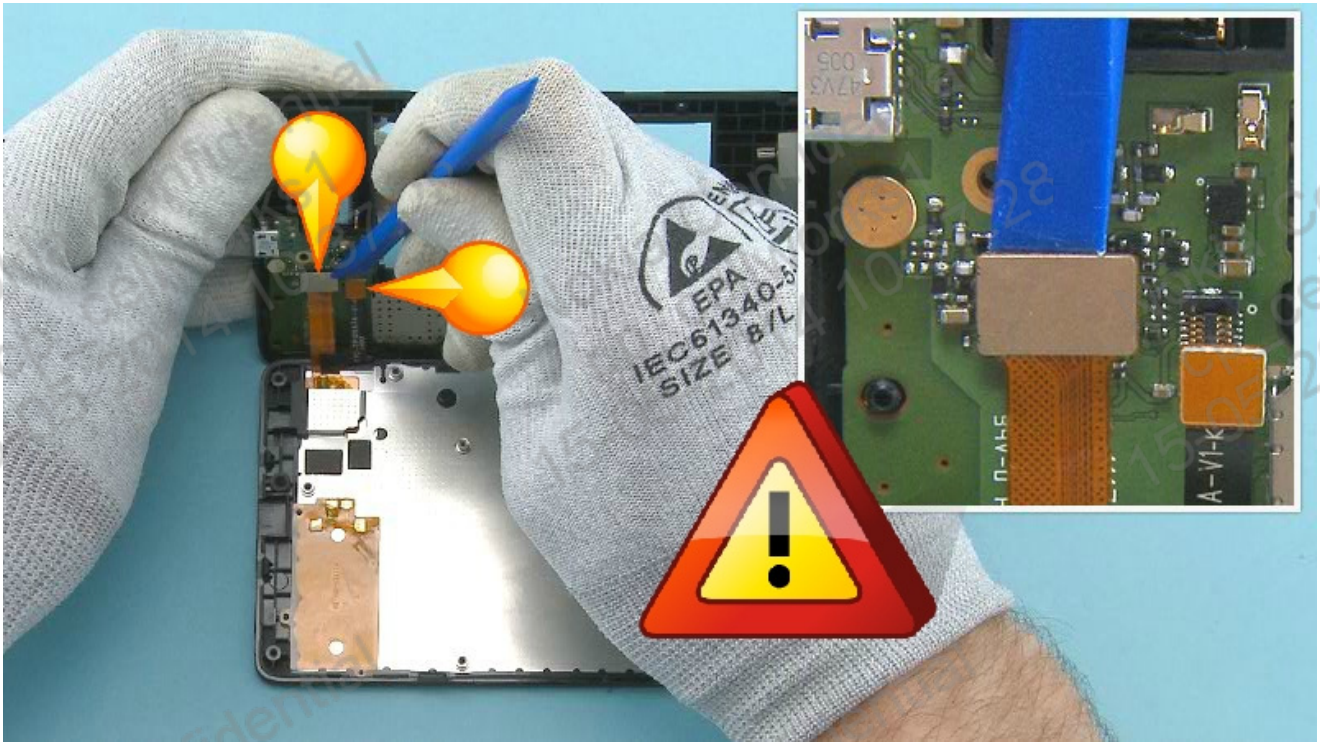
10) Then slide the SRT-6 along the top end and release the three shown clips.



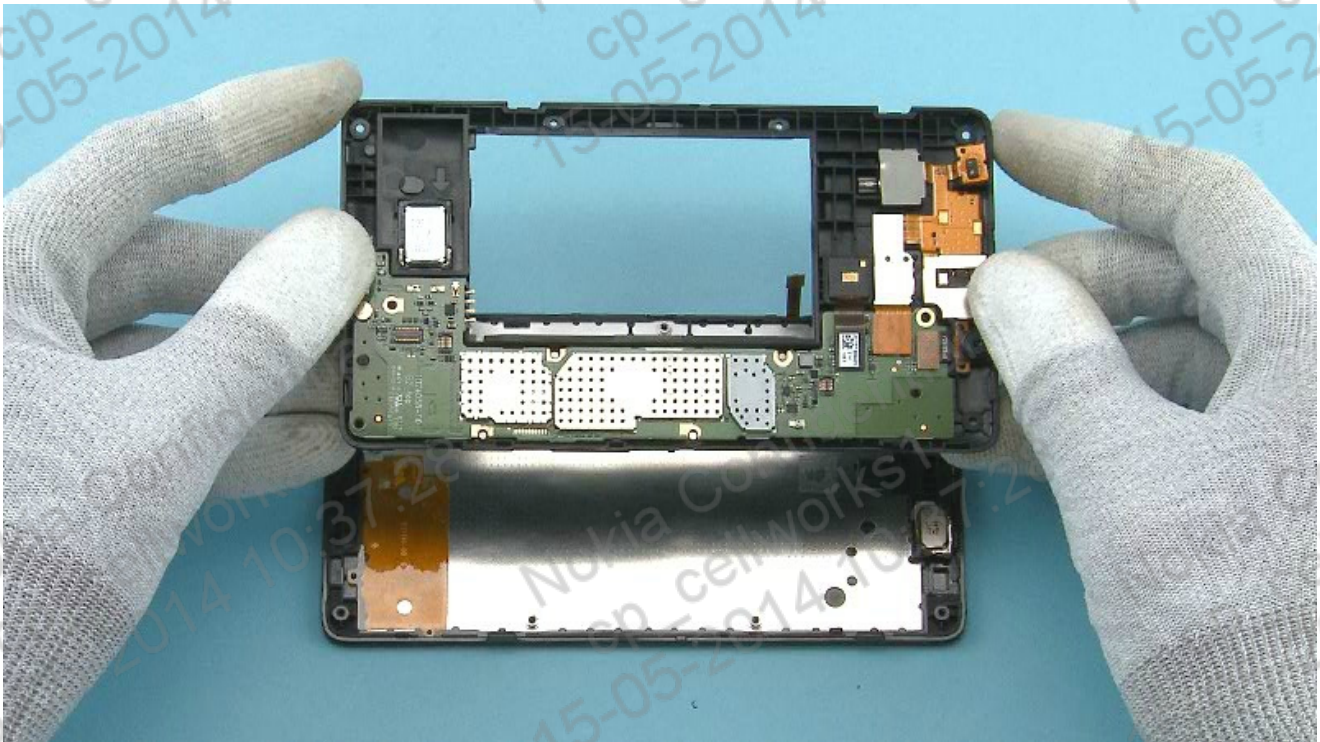
11) Fold open the D-COVER as shown. Be careful not to damage the flexes.



12) Open the SIDE KEY FLEX connector with the SS-93. Be careful not to damage the connector or any components nearby.



13) Open the DISPLAY and TOUCH PANEL connectors. Be careful not to damage the connectors or any components nearby.



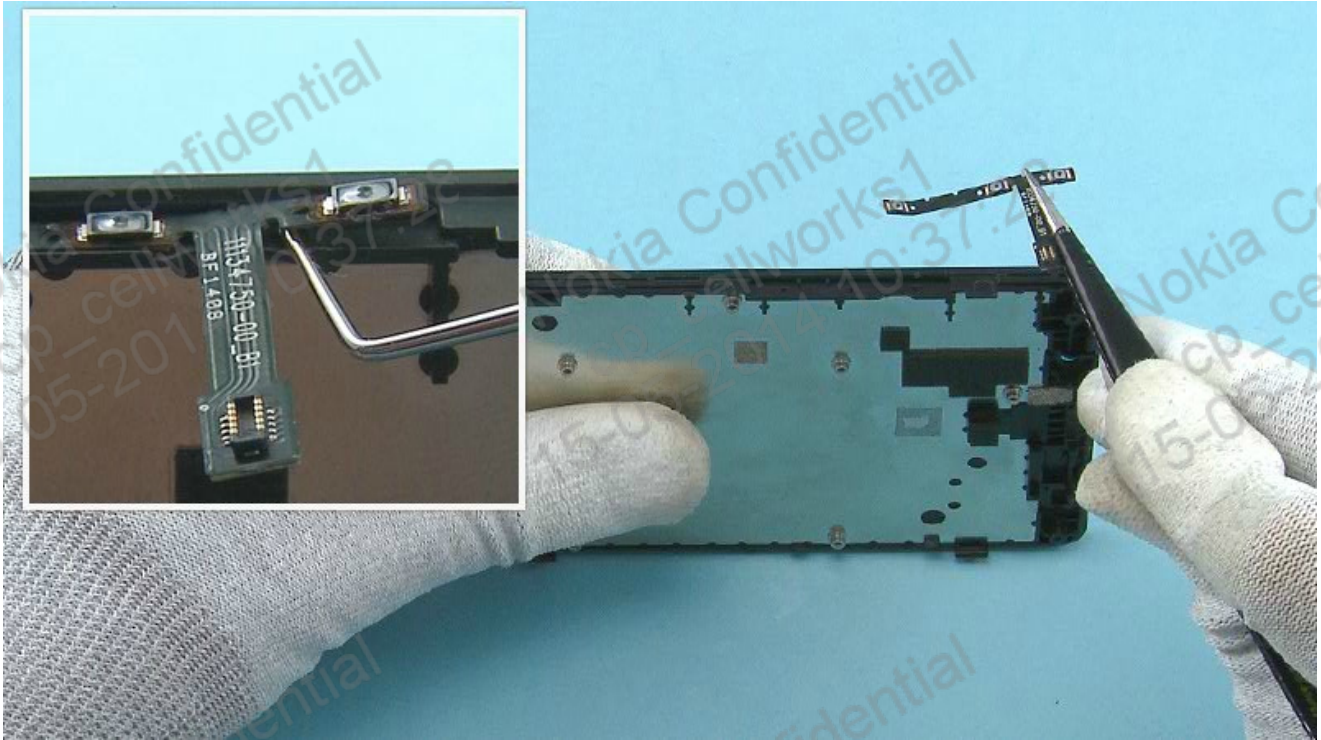
14) Remove the D-COVER.



15) Release one corner of the IHF FLEX with the dental tool and peel it off with tweezers. Be careful not to injure yourself with the sharp end of the dental tool. Do not use the IHF FLEX again. Discard it.



16) Release the EARPIECE with the dental tool and remove it with tweezers. Do not use it again. Discard it.



17) Release one part of the SIDE KEY FLEX with the dental tool and remove it with tweezers.



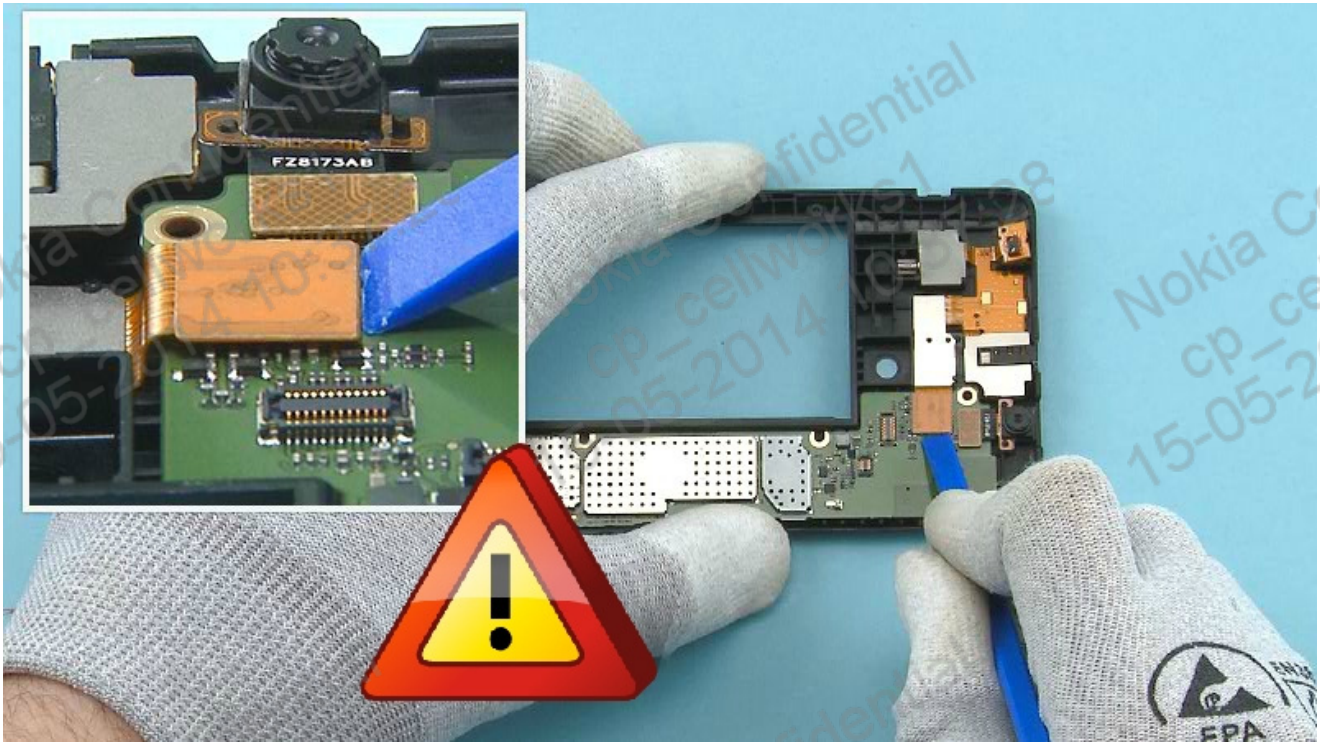
18) Open the CAMERA connector with the SS-93. Be careful not to damage the connector or any components nearby.



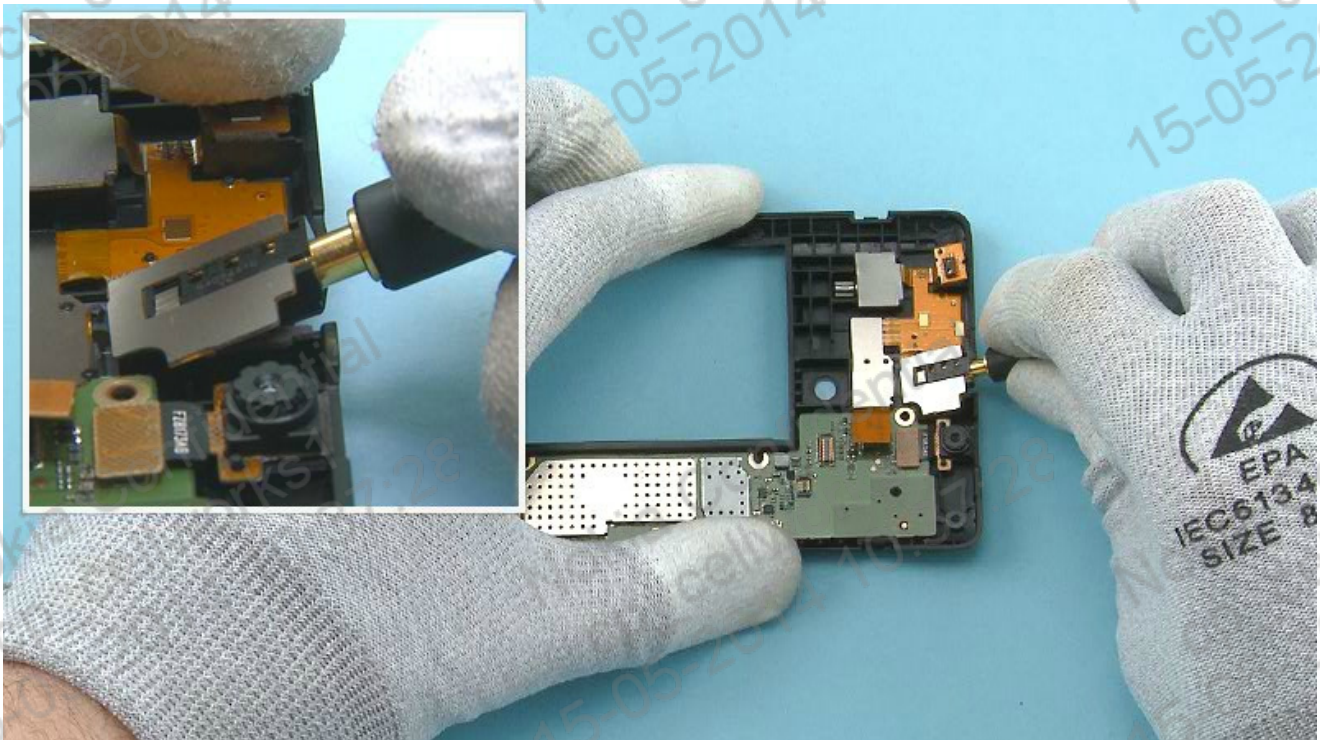
19) Grab the CAMERA RUBBER with tweezers and pull out the CAMERA including the CAMERA RUBBER.



20) Remove the CAMERA RUBBER from the CAMERA with tweezers.



21) Start releasing the TOP FLEX by first opening the TOP FLEX connector with the SS-93. Be careful not to damage the connector or any components nearby.



22) Then release the AV connector with an AV jack.



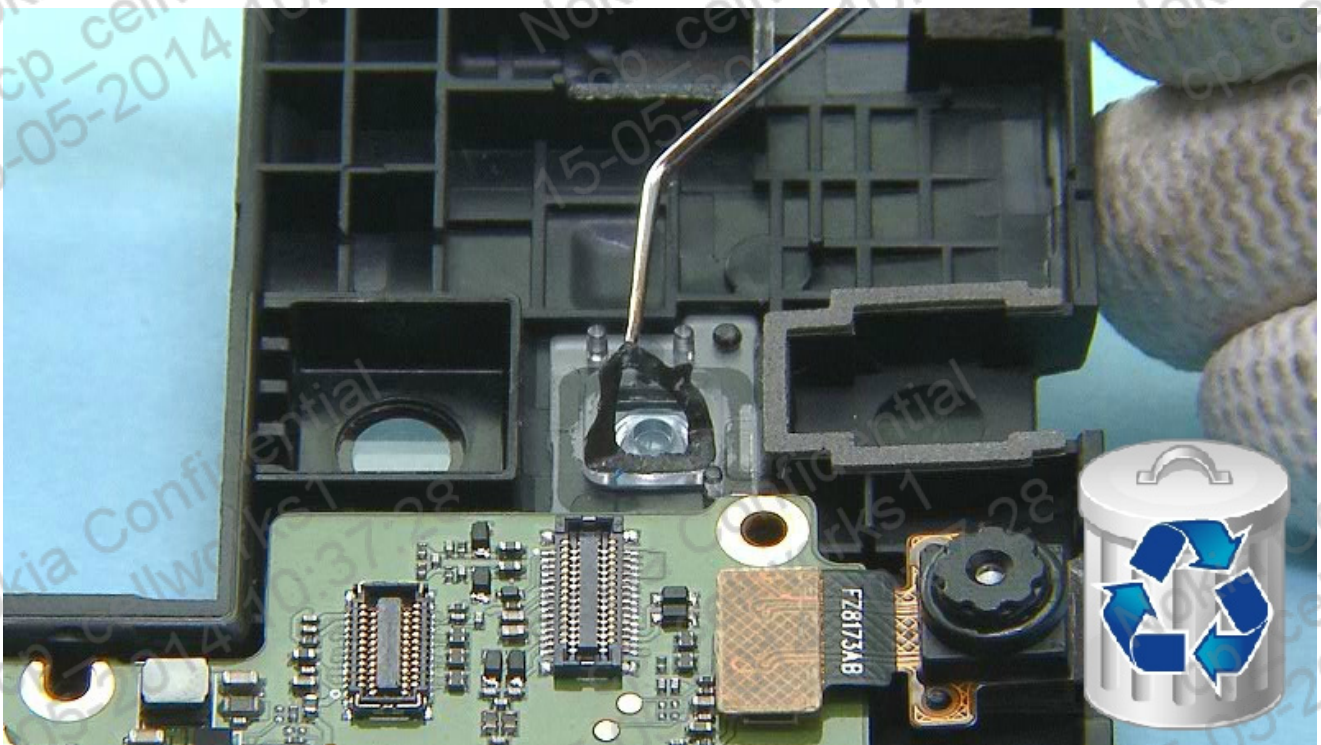
23) Then release the rest of the flex gently with tweezers.



24) Then release the vibra with the SS-93.



25) Finally release the sensor with the dental tool. Remove the TOP FLEX with tweezers.



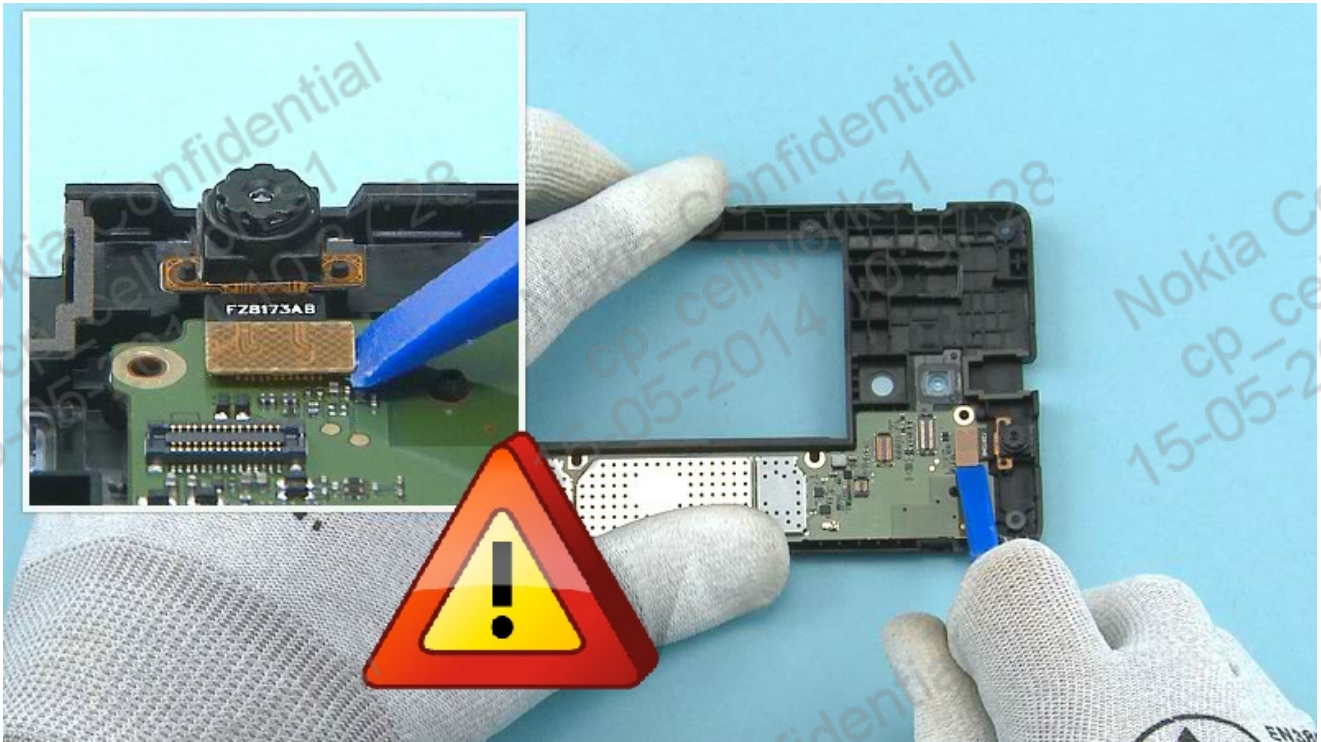
26) Remove and discard the FLASH LENS ADHESIVE with the dental tool.



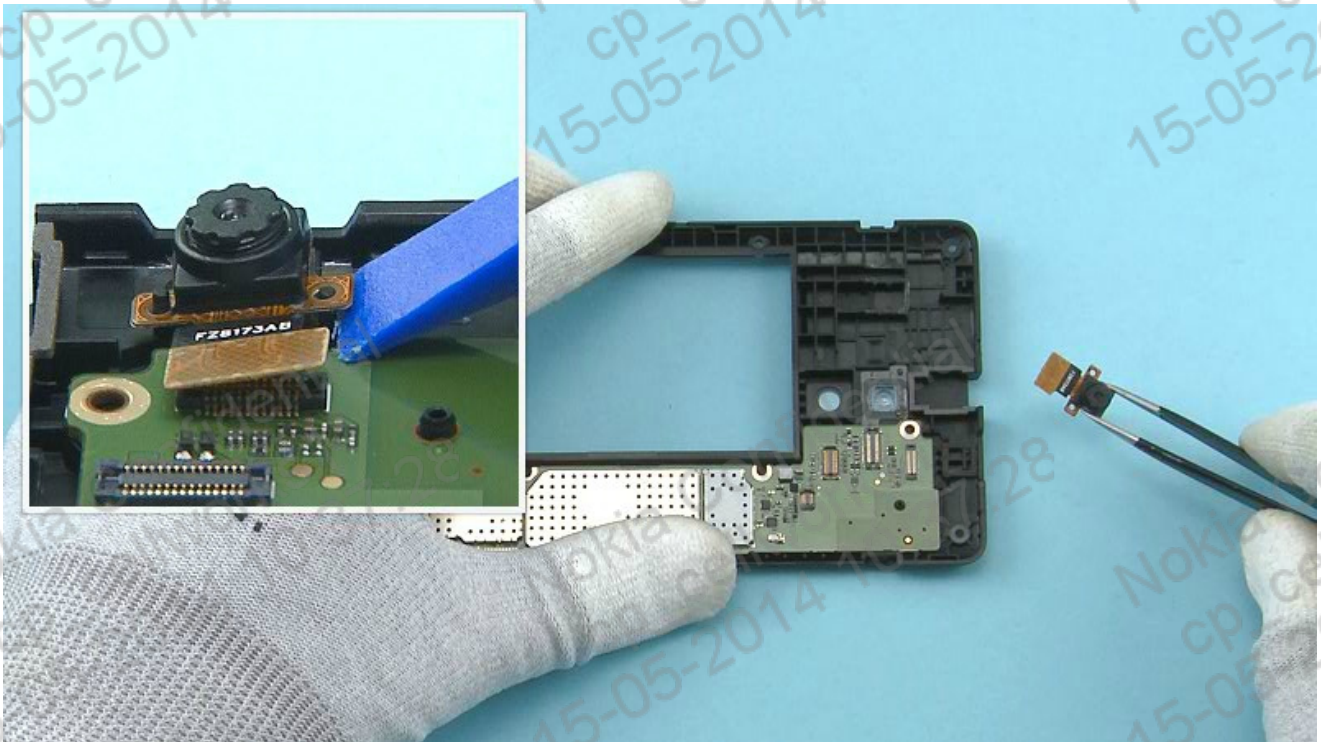
27) Remove and discard the VIBRA ADHESIVE with tweezers.



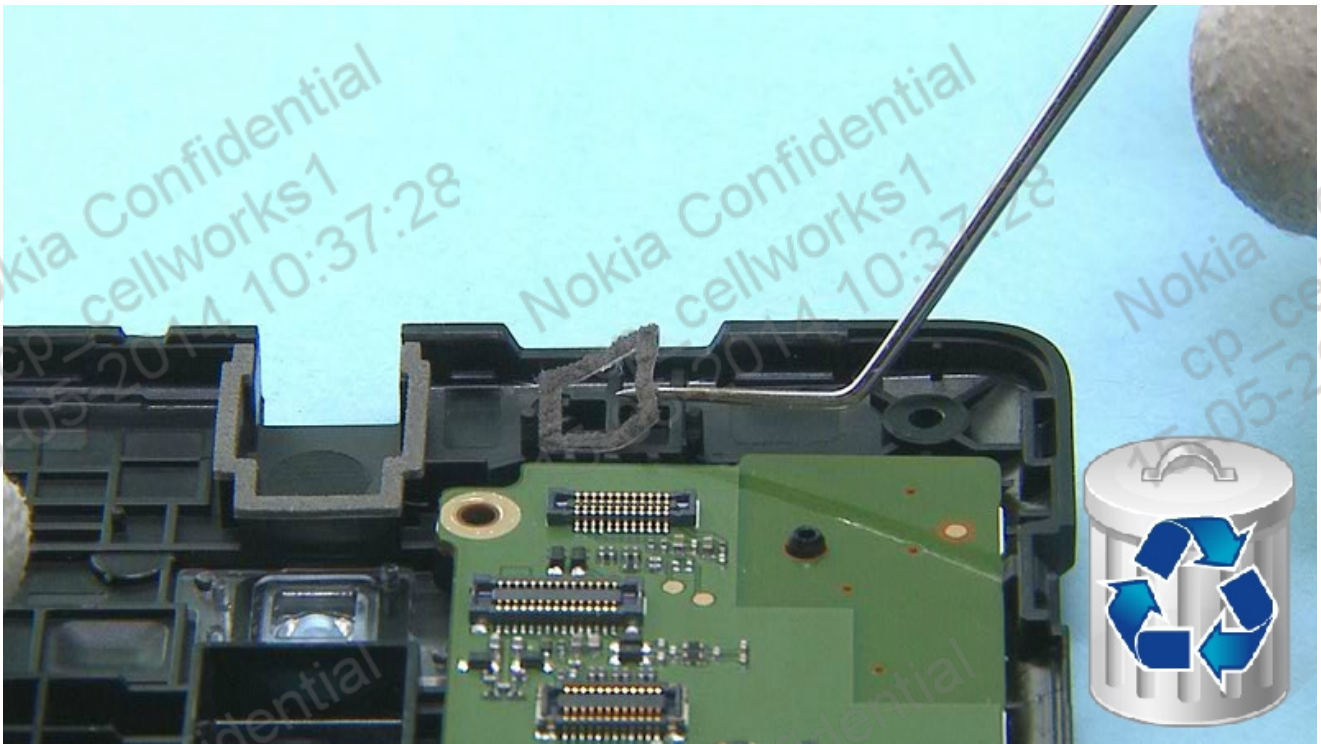
28) Remove and discard the SENSOR SUPPORT GASKET with the dental tool.



29) Open the FRONT CAMERA connector with the SS-93. Be careful not to damage the connector or any components nearby.



30) Release the FRONT CAMERA with the SS-93 and remove it with tweezers.



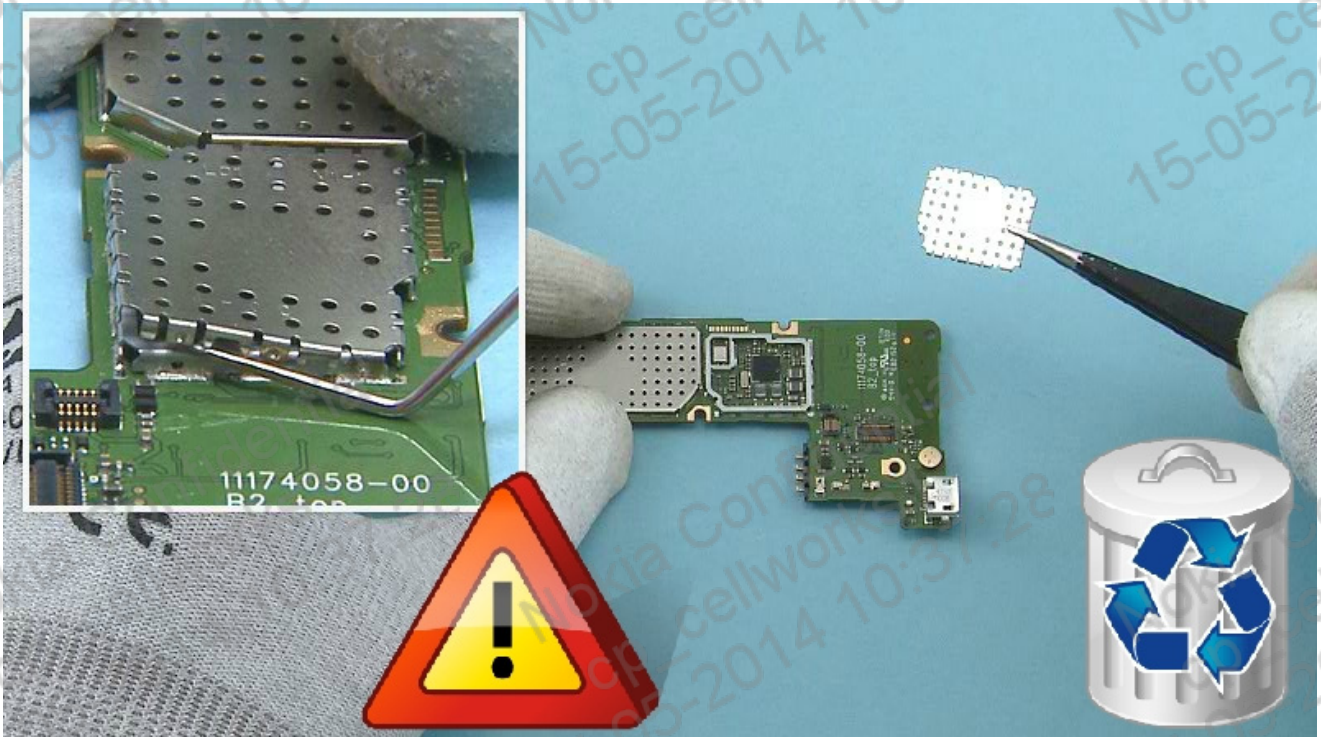
31) Remove and discard the FRONT CAMERA GASKET with the dental tool.



32) Release the three shown clips holding the ENGINE BOARD with the SS-93. Start from the top.



33) Remove the ENGINE BOARD.



34) Release the PMU SHIELDING LID with the dental tool. Be careful not to damage any components nearby. Remove and discard the PMU SHIELDING LID with tweezers.



35) Release the IHF SPEAKER with the sharp end of the SS-93 and remove it with tweezers.



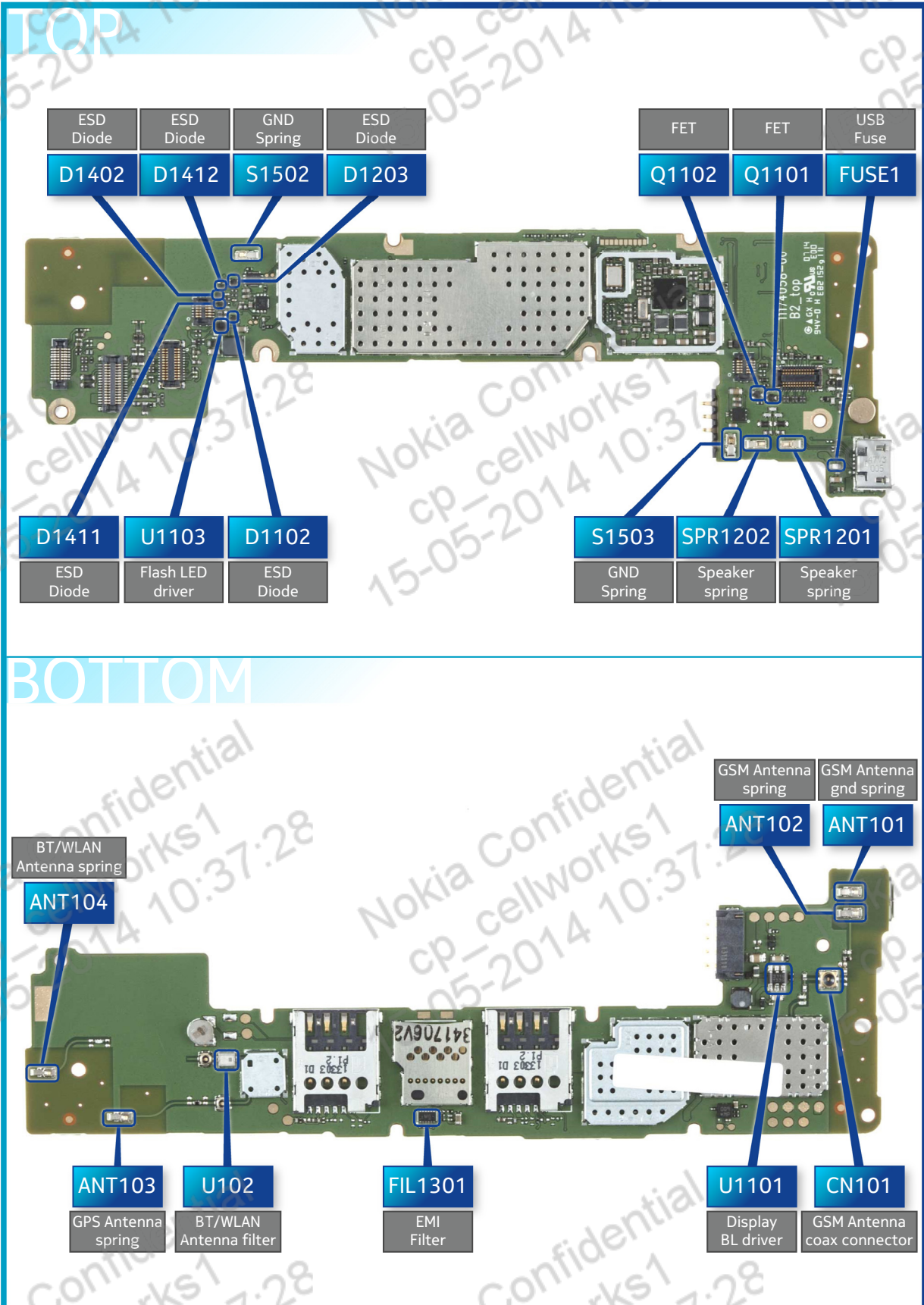
36) Remove and discard the SPEAKER GASKET with the dental tool.



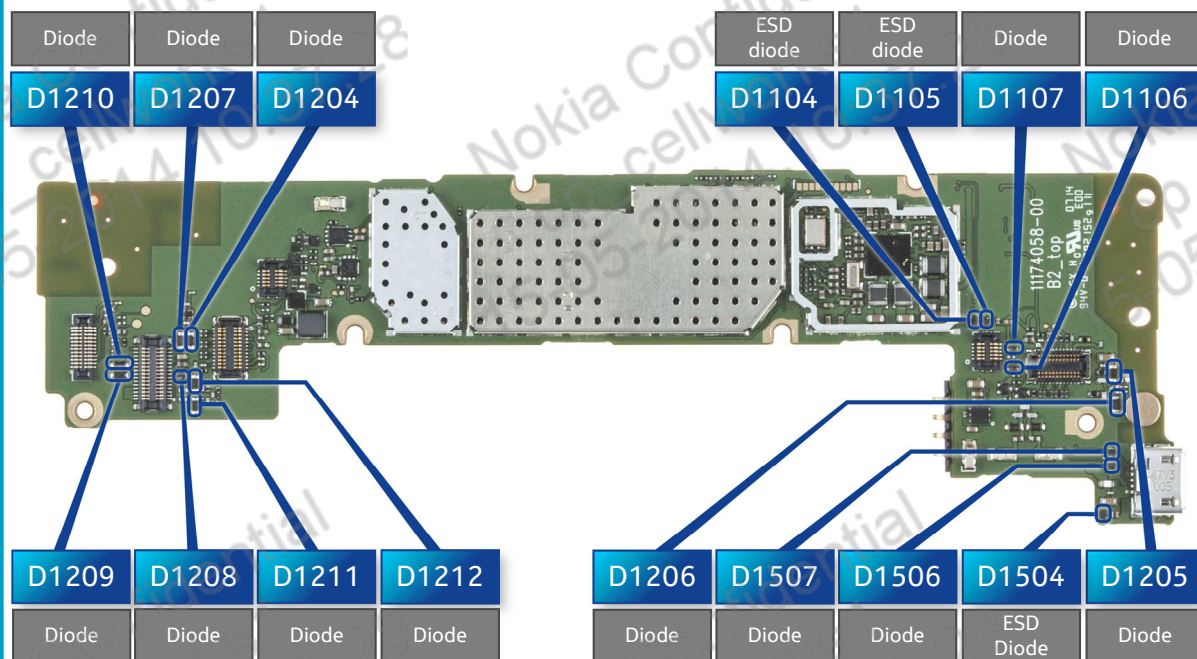
1) Fasten the eight Torx+ size 4 screws in the order shown to the torque of 15 Ncm.



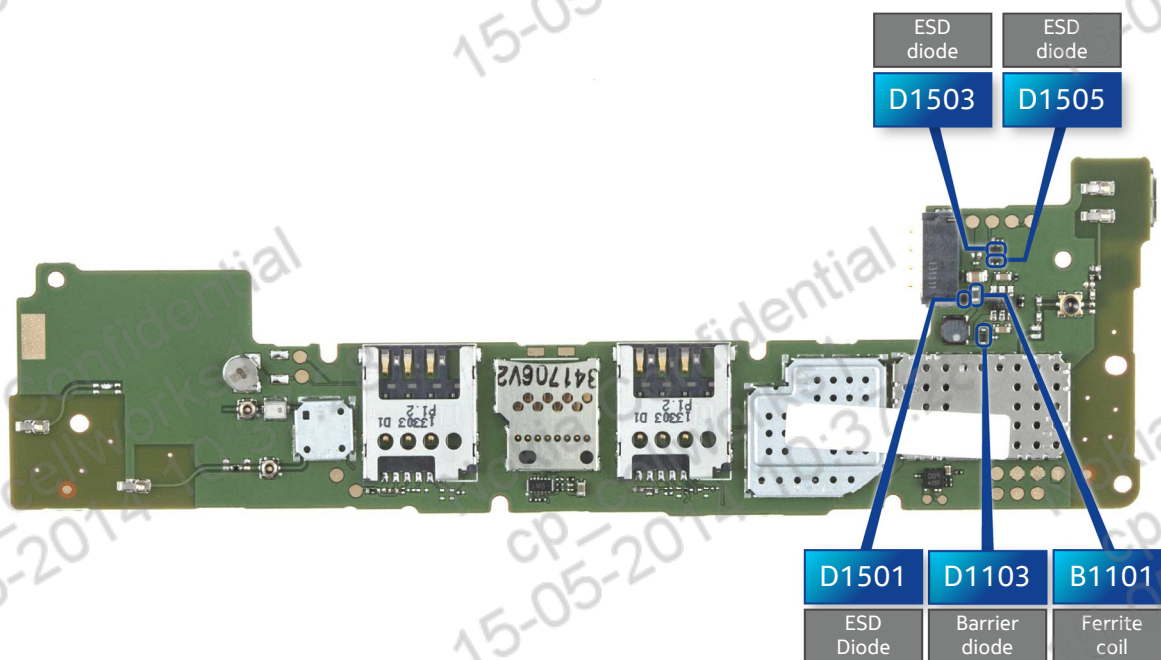
2) Fasten the four Torx+ size 4 screws in the order shown to the torque of 12 Ncm.



TOP



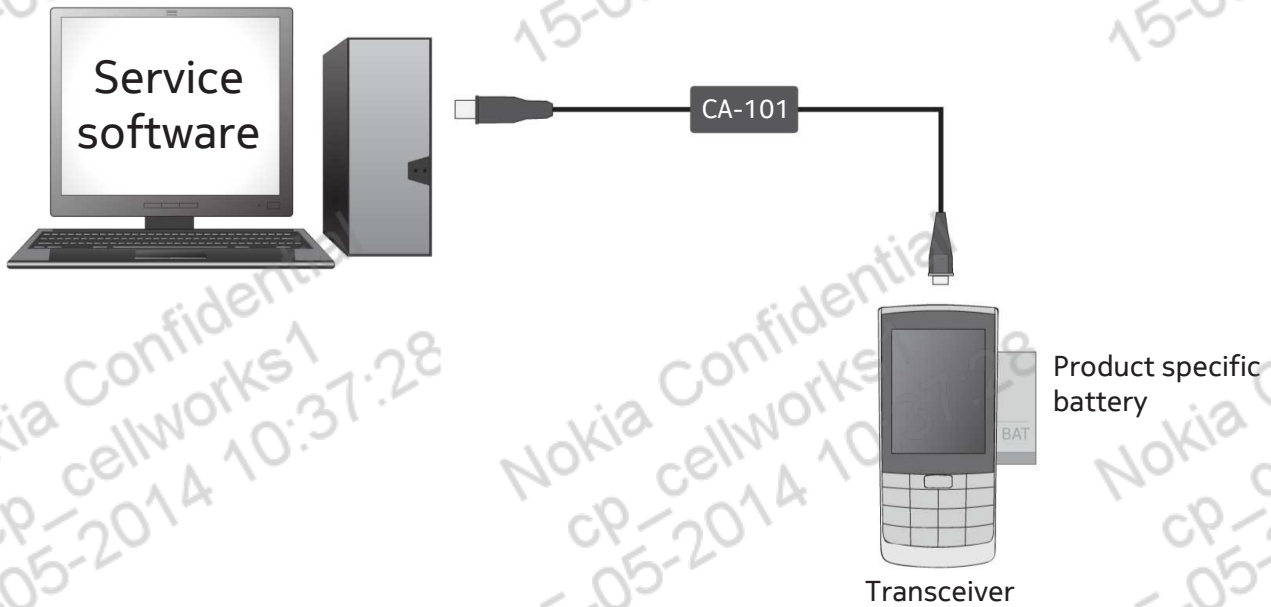
BOTTOM



 <p>AC-20 Travel charger AC-21C + CA-190CD (China)</p>	 <p>BN-02 Battery</p>	 <p>Nokia Standard Toolkit (v2)</p> <p>For more information, refer to the Service Bulletin (SB-011) on Nokia Online. Supplier or manufacturer contacts for tool re-order can be found in “Recommended service equipment” document on Nokia Online.</p>
---	--	---



Flashing concept



Hardware reset

If the phone hardware is jammed, you should first recommend that the consumer performs a hardware reset. The hardware reset does not remove any consumer data.

To perform a hardware reset, remove the battery and wait for one minute before reinserting it. Boot up the phone normally.

