



**SIROCCO**  
L I M I T E D

# “Fire Royal”

## **Models 1000 & 600**

DECORATIVE FUEL EFFECT APPLIANCE, THIS IS A  
**NATURAL GAS** (G20) APPLIANCE FOR USE IN GB AND IE  
ONLY AT A SUPPLY PRESSURE OF 20mbar.

### **USER’S, INSTALLATION AND SERVICE MANUAL REMOTE**

**PLEASE KEEP THESE INSTRUCTIONS IN A SAFE  
PLACE FOR FUTURE REFERENCE**

Our policy is constant development and improvement.  
Strict accuracy of illustrations and specifications is not guaranteed.  
Modifications to design and materials may be necessary subsequent to  
publication.

WINTHER BROWNE  
75 Bilton Way, Enfield, London, EN3 7ER  
Tel.0845 612 1893 Fax 0845 612 1894

## TABLE OF CONTENTS

<b><u>IMPORTANT NOTES</u></b>	<b>3</b>
<b><u>USER'S SECTION</u></b>	<b>4</b>
<u>FUEL EFFECT</u>	4
<u>GAS CONSUMPTION</u>	4
<u>OPERATING INSTRUCTIONS -</u>	4
<u>MANUAL VERSION</u>	4
<u>TO LIGHT THE FIRE</u>	4
<u>SELECT THE BURNER FLAME LEVEL</u>	4
<u>TO TURN OFF</u>	4
<u>CLEANING</u>	4
<u>OPERATING INSTRUCTIONS - REMOTE CONTROL VERSION</u>	5
<u>TO LIGHT THE FIRE</u>	5
<u>TO SELECT THE REQUIRED FLAME LEVEL</u>	5
<u>TO TURN OFF</u>	5
<u>OXYGEN DEPLETION SYSTEM</u>	5
<u>FUEL BED ASSEMBLY</u>	5
<b><u>INSTALLATION SECTION</u></b>	<b>6</b>
<u>1 GENERAL DATA</u>	6
<u>2 GENERAL INSTALLATION REQUIREMENTS</u>	6
<u>3 CHECK CARTON CONTENTS</u>	7
<u>4 THE FIREPLACE</u>	7
<u>5 GAS SUPPLY PIPE</u>	7
<u>6 APPLIANCE INSTALLATION</u>	7
<u>6.5 CHECK FOR GAS SOUNDNESS</u>	8
<u>6.6 FUEL BED ASSEMBLY</u>	8
<u>7 FUNCTIONAL CHECKS</u>	8
<u>8 CHECK FOR SPILLAGE</u>	8
<u>9 FINAL CHECK AND CUSTOMER BREIFING</u>	9
<u>10 SERVICING</u>	9
<u>10.1 TO REMOVE THE BURNER UNIT</u>	9
<u>10.2 TO REMOVE THE PILOT BURNER ASSEMBLY</u>	10
<u>10.3 TO REMOVE THE GAS TAP / FSD / IGNITION UNIT</u>	10
<u>11 MAINTENANCE SPARES</u>	10
<u>12 FAULT FINDING</u>	10

## IMPORTANT NOTES

1. SOFT WALL COVERINGS, (e.g. EMBOSSED VINYLs etc.) WHICH HAVE A RAISED PATTERN, ARE EASILY AFFECTED BY HEAT AND MAY SCORCH OR BECOME DISCOLOURED WHEN CLOSE TO A HEATING APPLIANCE. PLEASE BEAR THIS IN MIND WHEN RE-DECORATING.
2. AS WITH ANY GAS FIRE, THIS APPLIANCE MUST BE INSTALLED BY A COMPETENT PERSON (e.g. IN **GB** A C.O.R.G.I. MEMBER) IN ACCORDANCE WITH THE INSTALLATION INSTRUCTIONS AND THE LATEST EDITION OF THE GAS SAFETY (INSTALLATION AND USE) REGULATIONS OR THE RULES IN FORCE.
3. IF THE FIRE IS INTENDED TO BE INSTALLED TO A FIREPLACE THAT WAS PREVIOUSLY USED FOR BURNING SOLID FUELS THE CHIMNEY MUST BE SWEEPED PRIOR TO INSTALLATION.
4. THE FIRE MUST NOT BE INSTALLED DIRECTLY ONTO CARPETS OR OTHER COMBUSTIBLE MATERIALS.
5. **HOLE IN THE WALL APPLICATIONS.** INSTALLATIONS MUST COMPLY WITH BS; 5871/3 2005. REFER TO 2.10A AND FIG 3. FOR POSITIONING
6. **HEARTH APPLICATIONS.** THE FIRE MUST STAND ON A NON-COMBUSTIBLE HEARTH. THE HEARTH MATERIAL MUST BE A MINIMUM OF 12.5mm THICK. ITS TOP SURFACE SHOULD BE 50mm ABOVE THE FLOOR LEVEL TO DISCOURAGE THE PLACING OF RUGS, CARPETS OR OTHER COMBUSTIBLE MATERIALS OVER IT. THE FINISHED HEARTH LEVEL MUST EXTEND 300mm BEYOND THE VERTICAL FACE OF THE FIREPLACE OPENING FOR BOTH THE 16" AND 18" MODELS. THE MINIMUM WIDTH OF THE HEARTH MUST BE 650mm FOR THE 16" VERSION AND 700mm FOR THE 18" VERSION.
7. THE FIRE MUST NOT BE FITTED AGAINST A COMBUSTIBLE WALL.
8. THE MINIMUM HEIGHT ABOVE THE TOP SURFACE OF THE HEARTH FOR ANY PROJECTION (e.g. SHELF etc.) 150mm DEEP MADE FROM WOOD OR ANY OTHER COMBUSTIBLE MATERIAL IS 766mm. FOR COMBUSTIBLE PROJECTIONS ABOVE 150mm DEPTH ADD 12.5mm TO THE ABOVE CLEARANCE FOR EVERY 25mm OF ADDITIONAL PROJECTION DEPTH.
9. NEVER THROW PAPER OR OTHER MATERIAL ONTO THE FIRE.
10. IT SHOULD BE APPRECIATED THAT ALTHOUGH THIS APPLIANCE CONFORMS TO ALL THE REQUIRED STANDARDS, IT IS A DECORATIVE FUEL EFFECT HEATING APPLIANCE WITH AN OPEN FLAME AND CERTAIN PARTS OF ITS SURFACE WILL BECOME HOT. A SUITABLE GUARD, WHICH COMPLIES WITH THE REQUIREMENTS OF B.S. 8423 IS THEREFORE RECOMMENDED FOR THE PROTECTION OF THE VERY YOUNG, THE ELDERLY OR THE INFIRM. SUCH A GUARD IS ALSO RECOMMENDED FOR THE PROTECTION OF PET ANIMALS.
11. ALWAYS SWITCH THE FIRE OFF AND ALLOW SUFFICIENT TIME FOR IT TO COOL DOWN BEFORE HANDLING ANY COMPONENTS.
12. PLEASE NOTE THAT THIS APPLIANCE RETAINS HEAT FOR A LONG TIME AFTER IT HAS BEEN TURNED OFF.

## PLEASE NOTE

On first lighting your new fire, a slight odour may occur due to its new condition. This is quite normal and will disappear after a few hours use.

After some hours use, the ceramic coal or other ceramic pieces may change colour. This is quite normal.

Type. Due to the nature of this kind of burner, there will be various "popping" and flame noises

not usually associated with ordinary gas fires, these noises are perfectly normal.

The fire has been designed to give years of trouble free service. To maintain its optimum performance, advantage should be taken of the regular servicing and inspection facilities available for gas appliances. Annual servicing is recommended. These instructions are provided to help you in operating the fire and should be kept in a safe place.

## USER'S SECTION

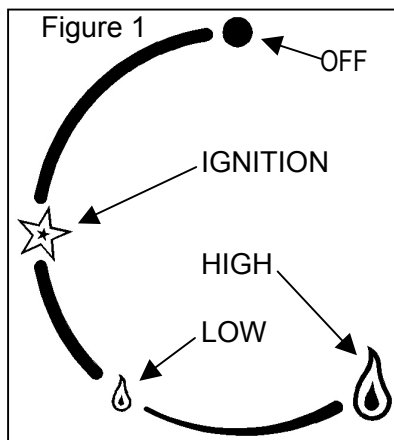
### FUEL EFFECT

This fire in certain models is supplied with ceramic fuel effect pieces to simulate a real fire and a granular bed to provide flame distribution across the bed. These items are safe to handle and they are designed for easy re-fitting after removal.

### Gas consumption

Please refer to the general data on page 6 item 1

### OPERATING INSTRUCTIONS - Manual Version



For your safety, the fire is fitted with a Flame Supervision Device (FSD), which will shut off the gas supply if for any reason the pilot is extinguished. This device incorporates a fixed probe, which senses heat from the pilot burner flame. If the probe is cool, the device will prevent any gas flow unless the control knob is pushed in at the IGNITION position.

If for any reason the flames go out or if the fire has been turned off for any reason, always WAIT FOR 3 MINUTES before attempting to relight.

### TO LIGHT THE FIRE

1. From the off position, SLOWLY push in and turn the control knob anti-clockwise to activate the spark at the IGNITION position.
2. Keep the control knob pressed in at this position for approximately 10 – 20 seconds to allow the Flame Supervision Device to warm.
3. Release the control knob. The pilot should remain lit independently.

### SELECT THE BURNER FLAME LEVEL

NOTE: When first turned on the flames will appear predominately blue. The ceramic bed will take time to warm up.

1. After lighting the pilot as described above, turn the control knob anti-clockwise to the HIGH position. The fire will now ignite.
2. To decrease the amount of flame push the control knob in slightly and turn to the LOW position. The fire can now be used at any desired setting at any position between minimum (LOW) and maximum (HIGH).

### TO TURN OFF

1. Push in and turn the control knob clockwise to the OFF position to extinguish the flames and the pilot flame.
2. If desired the pilot flame can be left on to make it quicker and easier to light the fire. Although the pilot is using gas all the time it is on, the amount used is minimal. To do this turn the control knob to the IGNITION position instead of the OFF position as described above. If the fire is to be switched OFF for long periods, it is recommended that the control knob be turned to the OFF position.

### CLEANING

All cleaning **MUST** be carried out when the fire is cold. NOTE: Heat is retained for some time after the fire is switched OFF. Clean the surround and fender parts with a slightly damp cloth and then dry. Abrasive cleaners should NOT be used.

Normally the fire should only need dusting. Light coatings of soot will usually be burnt off during the normal operation of the fire. If however, particles of mortar from the chimney accumulate these should be removed from the coals and back brick by dismantling them and cleaning with a soft brush

If soot or other foreign matter has become mixed with the granular materials and cannot be removed by hand, remove the contaminated layer and replace with a clean layer. When levelling ensure that none of the granules are pushed into the pilot burner outlet.

If large pieces of debris are found anywhere in the fireplace, the chimney and appliance should be

inspected and serviced by a competent person before further use.

## OPERATING INSTRUCTIONS - Remote Control Version

### TO LIGHT THE FIRE

(Ensure the battery is connected and batteries are also in the handset)

To light the fire, point the handset to the sensor on the front your fire. Push and hold the two buttons together, on the left hand side of the handset. The fire will give out a beep sound and you can release the buttons. After a few seconds you will hear the clicking spark to the pilot light. Once the pilot is lit the fire main burner will come on to the high position (this whole process will take no more than 20 seconds). **Fig 2.**



### TO SELECT THE REQUIRED FLAME LEVEL

To turn down the fire, point the handset to the sensor on your fire then push and hold the minus button (small flame), if you release immediately the flame will go to low if you hold the flame will lower slowly and you can release the button to your desired position.

To turn the fire up, point at the sensor, push the plus button until the desired flame height is reached.

The fire may be left in the standby mode (pilot only) by pressing the small round button on the handset.

### TO TURN OFF

To turn your fire off, point the handset at the sensor and push the top left button. The fire will go out.

### OXYGEN DEPLETION SYSTEM

If the Oxygen Depletion System (ODS) operates, i.e. shuts off the gas supply to the fire, WAIT FOR THREE MINUTES and follow the operating instructions on pages 4 and 5.

The ODS is designed to shut off the gas supply to the burner if the oxygen content of the room falls below a certain level. If it continues to operate then contact your installer to have the fire and flue system checked.

### SERVICING AND MAINTENANCE

If your fire requires servicing or maintenance, please contact your supplier quoting the model name and the serial number. Both of which can be found on the data badge, which is located next to the control knob behind the ash pan cover.

### BATTERY REPLACEMENT

**HAND SET.** USE ALKALINE BATTERIES ONLY (9 Volt PP3)  
IN THE HANDSET

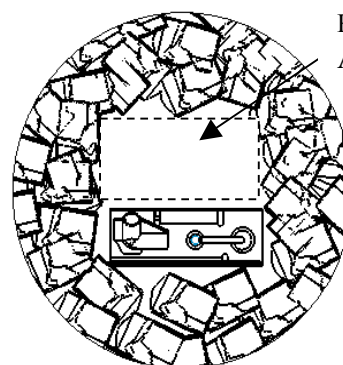
**BATTERIES IN THE UNIT.** THE BATTERY PACK IS LOCATED BEHIND THE GLASS PANEL ON THE RIGHT BOTTOM EDGE OF THE FIRE. PULL THE PACK TO THE SIDE BEING CAREFULL NOT TO DAMAGE THE CABLE IT IS ATTACHED TOO. REPLACE ONLY WITH 6 "AA" ALKALINE BATTERIES

### FUEL BED ASSEMBLY

The granular dispersal compound provided in a plastic bag should be poured into the burner vessel and gently levelled to the lip of the tray. Remove any spilt granules from under or around the burner and particularly from the pilot assembly. ALWAYS ENSURE THAT THE GRANULAR MATERIAL LIES LOOSELY AND IS NOT ALLOWED TO COMPRESS.

**Pebbles or ceramic chippings** The ceramic components come in a sealed plastic bag do not tip onto the burner tray as this will cause dust which could impair the pilot performance. Ensure that the pebbles or chippings are placed evenly in a single layer ensuring there is a gap directly in front of the pilot to ensure correct lighting of the burner.

**FIG 4.**



KEEP THIS  
AREA

## INSTALLATION SECTION

**NO COMPONENT IS MANUFACTURED FROM ASBESTOS OR ASBESTOS RELATED PRODUCTS.**

**THE APPLIANCE DATA BADGE IS LOCATED ON THE PLATE UNDER THE BURNER**

### 1 GENERAL DATA

Gas Type:	NATURAL GAS (G20)	
Inlet Pressure:	20mbar	
Gas Connection:	8mm COMPRESSION	
Pilot Assembly:	NG20/SIT.OP/9022	
Gas Tap Assembly:	PS1383	
Model	1000	600
Maximum Input Gross:	12.5kW	6,5kW
Weight	49Kg	36Kg
Injector	3	1,78

The following are used on the Remote Control version only:

Valve Assembly	ACS2LP
Remote Handset:	EDB2
Battery Type:	9 Volt ALKALINE (PP3) 6 x AA

### 2 GENERAL INSTALLATION REQUIREMENTS

- 2.1 In your own interest and that of safety, it is the law that all gas appliances are installed by competent persons in accordance with the Gas Safety (Installation & Use) Regulations 1994 (as amended) or the rules in force. Failure to install appliances correctly could lead to prosecution.

The Confederation for the Registration of Gas Installers (CORGI) requires its members to work to recognised standards. The installation **MUST** be in accordance with these instructions, all the relevant parts of the current editions of the following British Standards and the relevant British Standard installation specifications and codes of practice and the Building Regulations issued by the Department of the Environment and the Building Standards (Scotland) (Consolidation) Regulations issued by the Scottish Development Department:

BS 5871 : Part 3  
BS 5440 : Parts 1 & 2  
BS 6891  
BS 6461 : Parts 1 & 2  
BS 8303  
BS 4543 : Part 2  
BS 1251

#### Installations in IE

The installation must be carried out by a competent person and installed in

accordance with the current edition of I.S.813 "Domestic Gas Installations" and the current building regulations.

- 2.2 The appliance can be used in the following openings:

A Fireplace recess built from components according to BS 1251 "Open Fireplace Components". The flue should be a class 1 type with a minimum effective height of 3 meters.

The Minimum depth of the opening 310mm. The minimum front width 625mm for model 600 and 1025 for model 1000 the minimum height of 1000 model is 655mm and for the 600 model is 555mm see **Fig 3**.

#### **Royal 1000**

The flue should be a Class 1 type with a minimum effective height of 3 metres.

#### **Royal 600** suitable for Class 1

- 2.3 Suitable flues and minimum flue sizes are
- a) 225mm x 225mm conventional brick built chimney.
  - b) 175mm diameter lined brick or stone flue.
  - c) 200mm diameter factory made insulated flue manufactured to BS 4543.
  - d) 175mm diameter flue pipe (see BS 6461 : part 1 for suitable materials).
- Royal 600 can be used on the above flues
- 2.4 The flue **MUST NOT** be used for any other appliance or application.
- 2.5 Any chimney dampers or restrictors should be removed. If removal is not possible then they **MUST** be fixed in the open position.
- 2.6 If the appliance is intended to be installed to a chimney, which was previously used for solid fuels, then the chimney **MUST** be swept clean prior to installation.
- 2.7 If the fireplace is of the under floor draught type then it **MUST** be sealed to stop any draughts.
- 2.8 **HEARTH APPLICATION.** The appliance **MUST** be mounted on a non-combustible hearth (Note: conglomerate marble hearths are considered as non-combustible). The hearth material **MUST** be at least 12.5mm thick. Its top surface should be 50mm above the floor level to discourage the placing of

rugs or carpets over it. The appliance can be fitted to a purpose made proprietary class "O" – 100°C or 150°C surround.

- 2.9 In particular the finished hearth level **MUST** extend 300mm in front of the vertical face of the fireplace for both the 16" and 18" variants. The minimum width of the hearth is 650mm for the 16" and 700mm for the 18" version.

**THE APPLIANCE MUST NOT STAND ON COMBUSTIBLE MATERIALS OR CARPETS OR BE FITTED TO A COMBUSTIBLE WALL.**

- 2.10 The minimum height above the top surface of the hearth for any projection (e.g. shelf etc.) 150mm deep made from wood or any other combustible material is 766mm. For combustible projections above 150mm depth, add 12.5mm to the above clearance for every 25mm of additional projection depth.

- 2.10.A **HOLE IN THE WALL APPLICATION** The appliance can be used in a no hearth application if the installation complies to BS 5871-3:2005 and appliance is installed so that the height from the base of the fireplace opening to the floor is no less then 300mm as shown in Fig 3

- 2.11 Please note that soft wall coverings (e.g. embossed vinyl's etc.) are easily affected by heat. They may, therefore, scorch or become discoloured when close to a heating appliance. Please bear this in mind when installing.

- 2.12 The appliance **MUST NOT** be installed in any room which contains a bath or shower or where steam is regularly present.

- 2.13 An extractor fan **MUST NOT** be fitted in the same room as the appliance or in any area from which ventilation is taken IF IT IS LIKELY TO AFFECT THE SAFE OPERATION OF THE APPLIANCE. If there is a fan in such a locality, note the spillage test requirements detailed on page 16.

- 2.14 **VENTILATION REQUIREMENTS**  
For use in **GB** purpose-built ventilation is not normally required for 600 model. The **1000** model **REQUIRES** ventilation of min air space 100mm x 100 mm  
For use in **IE** ventilation must be in accordance with IS 813.

- 2.15 It is essential that all decorative fenders have a minimum open area of 50cm<sub>2</sub> to ensure adequate air supply for correct combustion and are approved for use with this appliance.

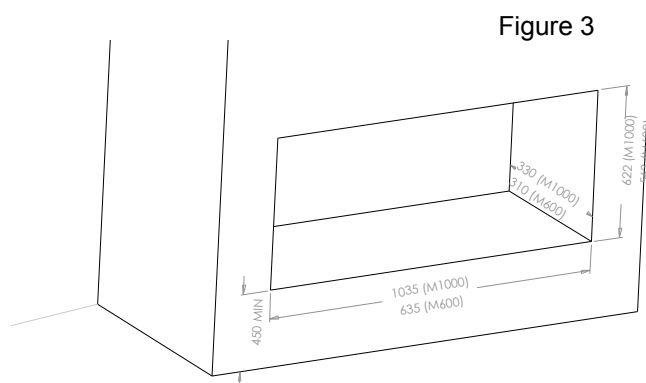
### 3 CHECK CARTON CONTENTS

- ☐ 1 Fire Royal Burner Unit.
- ☐ 1 Set of fuel ceramic pieces
- ☐ 1 Pack of Granular Material
- ☐ 1 Battery pack 6 X AA, 1 X D cell
- ☐ 1 Remote Handset (*Remote Version Only*).
- ☐ 1 Instruction Manual.
- ☐ 1 Gather hood
- ☐ 1 Fixing kit
- ☐ 0 The adapter to 175mm tube is not included

### 4 THE FIREPLACE

#### 4.1 FIREPLACE SIZE

Make sure that the fireplace conforms to the sizes stated in 2.2 of General Installation Requirements (refer to Figure 3).



- 4.2 The fireplace opening should be in good order and have a reasonably flat floor level with the hearth.

- 4.2 After preparing the fireplace, apply a lighted match, paper or smoke match to the chimney opening. Observe the smoke. If there is a definite flow into the opening, continue with the installation. If there is not a definite flow, pre-heat the chimney for a few minutes and re-check. If there is still no definite flow, the chimney may need attention. **DO NOT FIT THE APPLIANCE – SEEK EXPERT ADVICE.**

### 5 GAS SUPPLY PIPE

A restrictor PTP elbow is provided for the gas connection

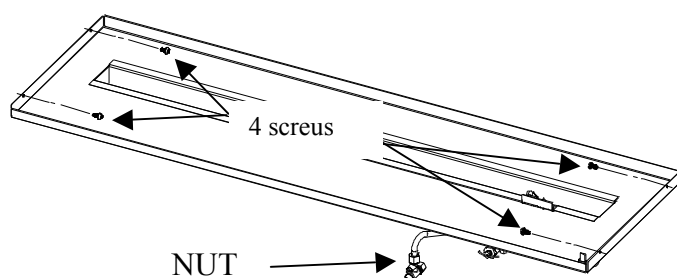
NOTE: The supply pipe must be of rigid durable material. Flexible pipe **MUST NOT** be used.

### 6 APPLIANCE INSTALLATION

- 6.2 Remove the gather hood this is placed in the fire box up side down. Remove the

burner assembly by removing the four screws and disconnecting the nut as shown in Fig 5. Decide on the best position for the gas supply to enter the fire box and remove a knock out hole for the gas pipe. Offer the fire box into the opening and mark the holes in the flange for fixing to the wall. Remove the box and drill and plug the wall with the plugs provided refit the box and secure in place with the screw provided. Now fit the gather hood **FIG 6**, passing it through the fire box front and securing it in fire box with the screws provided ( take care not to scratch or damage the fire box) It may be necessary to remove the canopy to facilitate this. Now connect the gas supply to the Isolation elbow fitted to the fire box. Fit the electronic control box (remote control models only) with the screws provided and fit the burner assembly in reverse order as previously described.

**FIG 5.**



**6.3 Remember to protect the end of the supply pipe when passing through walls, cavities etc, to stop brick dust and debris entering the pipe and causing a blockage. FAILURE TO DO THIS WILL VOID YOUR WARRANTY.**

**6.4 HAVE YOU PURGED THE GAS SUPPLY PIPES?** This is essential to expel any foreign matter that might be blown into the valve assembly, injector, or pilot etc. and cause a blockage.

**6.4** Once the gas supply has been connected and purged then the burner assembly can be refitted in the reverse order to removal

## 6.5 CHECK FOR GAS SOUNDNESS

Turn on the gas supply and check for gas soundness with a suitable leak detection fluid (see BS 6891).

Please check all joints including the pilot assembly.

## 6.6 FUEL BED ASSEMBLY

Refer to the User's section for details

## 7 FUNCTIONAL CHECKS

Remove the pressure test point sealing screw from the isolation elbow and attach a suitable pressure gauge.

Light the pilot and check the correct operation of the burner at all the flame settings. Refer to the Operating instructions on pages 4 and 5.

Check that the inlet gas pressure is as stated on page 6 when the fire is at its highest setting.

Once the fire has been lit for 5 minutes turn the gas OFF at the isolating elbow. After a further 3 minutes turn the gas supply ON again, if the gas has stopped flowing, the Flame Supervision Device (FSD) is operating correctly. Always check that the gas has stopped flowing even if you hear the FSD valve close within the 3-minute period.

Turn OFF the appliance and the gas supply and refit the pressure test point sealing screw. Turn ON the gas supply and check for leaks around the pressure test point sealing screw with a suitable leak detection fluid.

## 8 CHECK FOR SPILLAGE

A SPILLAGE CHECK MUST BE MADE BEFORE THE INSTALLED APPLIANCE IS LEFT WITH THE CUSTOMER. DO THIS TEST WITH ALL THE CERAMICS FITTED AND THE GLASS TRIM IN PLACE. CARRY OUT THE TEST AS FOLLOWS:

- 8.1 Close all doors and windows in the room containing the appliance.
- 8.2 Light the appliance and set to the HIGH setting.
- 8.3 Leave the appliance ON for 5 minutes then light a smoke match. The match should be inserted 10mm below the top of the opening and be pointed upwards at 45° to the horizontal.

Move the smoke match across the opening. The installation is satisfactory if all the smoke is drawn into the chimney.

- 8.4 If all the smoke is not drawn into the chimney, leave the fire alight for a further 10 minutes at the HIGH setting and then repeat the test. If all the smoke is still not drawn into the chimney, inspect the sealing to the fireplace surround. If the sealing is satisfactory DISCONNECT THE APPLIANCE AND SEEK EXPERT ADVICE. Spillage is a flue fault not a fire fault.
- 8.5 Open all internal connecting doors, hatches, etc in the same room as the appliance. Keep all the doors and windows that open to the outside of the building closed. Re-check for spillage as described above. If an extractor fan is fitted in the same room as the appliance or a connecting room, check that spillage does not occur with the fan operating, all doors, and other openings between the fan and the appliance open.

## **9 FINAL CHECK AND CUSTOMER BRIEFING**

- 9.1 Instruct the customer on the full operation of the appliance.
- 9.2 Advise the customer how to assemble the fuel effect as described in these instructions and that any build up of soot can be removed as described in CLEANING on page 4 of these instructions.
- 9.3 Advise the customer that any cleaning MUST be carried out when the appliance is cold.
- 9.4 Advise the customer that some granules will be lost during the life of the appliance due to cleaning etc. and that the surplus granules should be kept in a safe place for replenishment.
- 9.5 Please explain to the customer the purpose of the Oxygen Depletion System (ODS) and in particular the following:
- (a) The ODS system operates if the Oxygen level in the room falls below safe levels usually due to

interruption of the evacuation of combustion products i.e. a blocked chimney etc.

- (b) Describe the restart procedures.  
(c) Point out that on operation of the ODS system they must seek expert advice.

- 9.6 (Remote Control Version Only)  
Instruct the customer how to change the batteries in the remote handset and in the remote receiver.  
USE ALKALINE BATTERIES ONLY
- 9.7 Hand over these instructions to the customer for keeping in a safe place.
- 9.8 Recommend that the appliance and chimney should be inspected and serviced by a competent person annually.

## **10 SERVICING**

TURN OFF THE GAS SUPPLY AND ALLOW TO COOL BEFORE COMMENCING ANY SERVICING. ALWAYS TEST FOR GAS SOUNDNESS AND SPILLAGE AFTER REFITTING THE APPLIANCE. (A LONG BRUSH MAY BE REQUIRED TO REACH SOME JOINTS FOR SOUNDNESS TESTING.)

Check that the appliance is clean and that soot deposits or debris is not blocking the gaps between coals causing an imperfect flame appearance or that stray pieces of granules are not impairing the electrode spark or pilot burner. For removing the pilot burner, refer to section 10.2.

### **10.1 TO REMOVE THE BURNER UNIT**

- (a) Disconnect the appliance from the gas-isolating elbow and remove the four screws (refer to Figure 5 ). The burner tray can now be lifted up and away from the base plate. Take care to protect the pilot head from damage.
- (b) Tip the granular material into a secure bag. We would recommend the replacement of this inexpensive material

- (c) Re-assemble in the reverse order.

## 10.2 TO REMOVE THE PILOT BURNER ASSEMBLY

- (a) Follow 10.1 above to remove the burner tray.
- (b) Disconnect the thermocouple connection from the back of the gas valve.
- (c) Disconnect the 4mm pilot burner tube from the pilot burner assembly.
- (d) Disconnect the electrode lead from the pilot burner assembly.
- (e) Remove the two screws at the front of the pilot burner bracket
- (f) If defective, the whole assembly **MUST** be replaced. **DO NOT** attempt to replace the individual components as this could compromise the operation of the ODS pilot.
- (g) Reassemble in the reverse order.

## 10.3 TO REMOVE THE GAS TAP / FSD / IGNITION UNIT

- (a) Follow 10.1 above to remove the burner tray.
- (b) Disconnect the thermocouple from the tap.
- (c) Disconnect the 4mm pilot burner tube from the tap.
- (d) Disconnect the 8mm burner supply tube from the tap
- (e) Disconnect the 8mm gas inlet tube from the tap.
- (f) Pull off the control knob.
- (g) Remove the retaining nut from the front of the control panel. The tap / FSD / ignition unit can now be removed and exchanged.
- (h) Re-assemble in the reverse order.

## 11 MAINTENANCE SPARES

During servicing and maintenance your appliance may need some replacement parts. Here is a short list of spare parts that are available:

Supplier Ref.	Description	Manufacturers Part No.
	Coals Kit	NA
	Pebbles Kit	CER-PB-ROY-1-SI-3-Z
	Logs Kit	CER-LG-ROY-1-SI-4-Z
	Granule Kit	CER-GR-ROY-1-DA-3-Z
	Remote control valve	VAL-RC-ROY-1-SO-2-A
	Remote Control hand set	VAL-RC-ROY-1-SO-3-A
	Remote control box	VAL-RC-ROY-1-SO-4-A
	Remote control pilot assembly	VAL-RC-ROY-1-SO-5-A
	Remote control receiver	VAL-RC-ROY-1-SO-6-A
	Manual valve	VAL-CV-ROY-1-SG--A

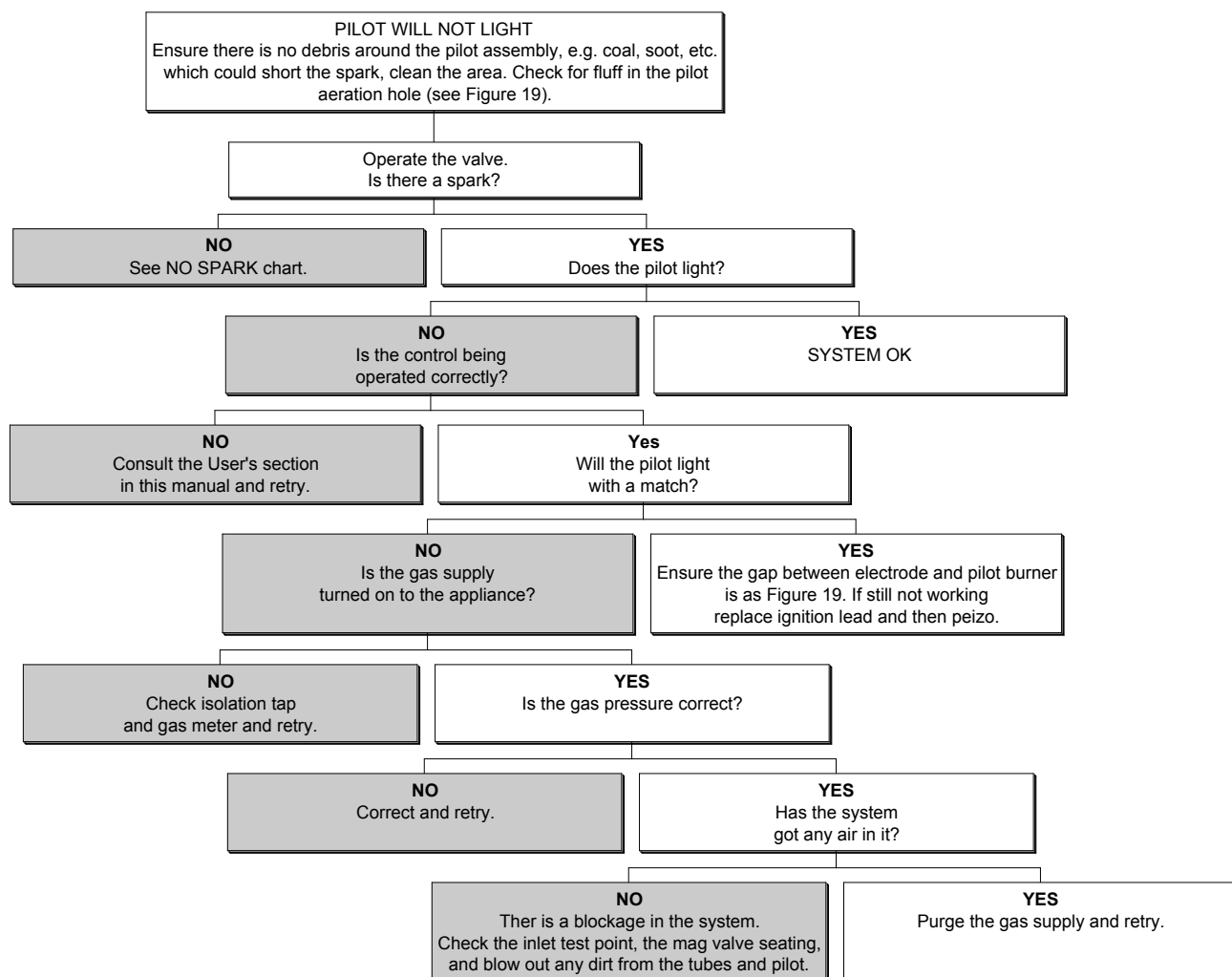
Please contact SIROCCO if other parts are required.

## 12 FAULT FINDING

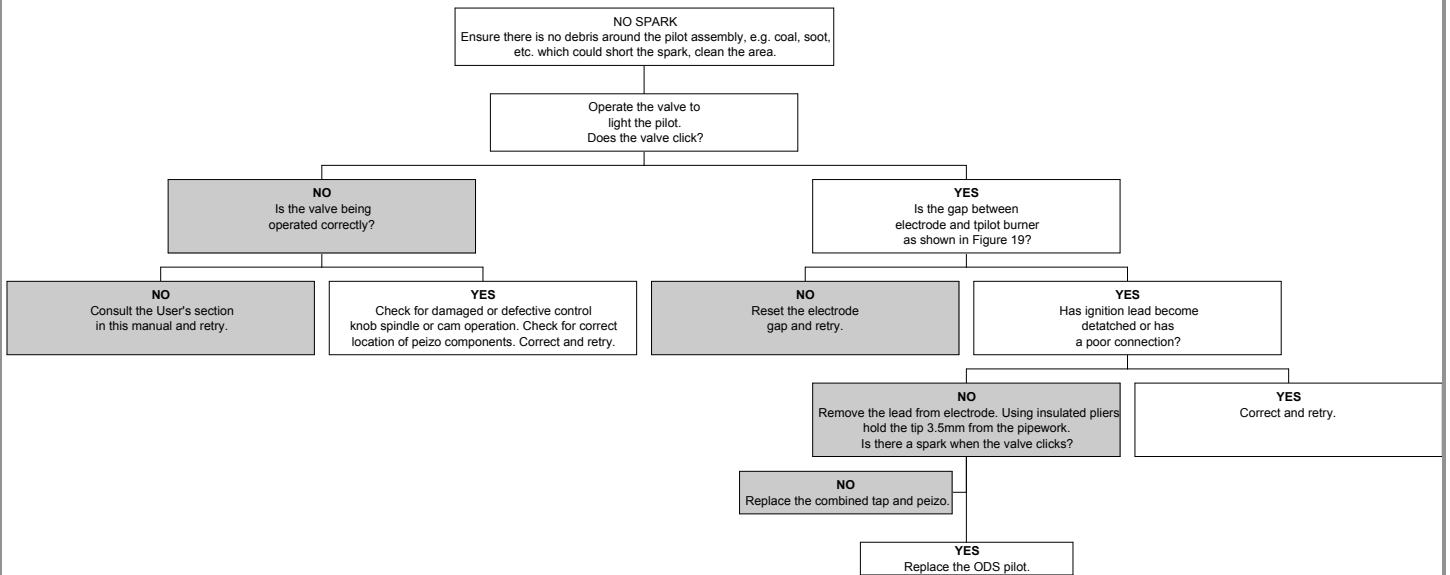
FAULT	CAUSE / POSSIBLE REMEDY
Pilot will not light.	See Ignition Functional Check 1.

No spark.	See Ignition Functional Check 2.
Pilot will not stay lit or fire goes out in use.	See Flame Failure Functional Check.
Uneven flame pattern e.g. flame at one side only.	1. The fuel effect may need adjusting to even the flame pattern.
Blue flames.	1. The fire will burn blue on initial lighting, until sufficient heat is generated causing the flames to burn with a yellow tip. Typically 10 – 20 minutes. 2. Insufficient gas pressure. Check the supply pressure to the appliance.
Low flame height.	1. Insufficient gas pressure. Check the supply pressure to the appliance. 2. The visual effect is controlled by the placement of the fuel effect pieces. Try slight adjustments. See pages 9 – 15.
Popping noises.	1. Some popping noises will always be present. Severe popping may be caused by incorrect gas pressure. Check the supply pressure to the appliance. 2. Incorrect amount of granular material in the burner tray. See section 6.6 3. Try slight adjustments to the fuel effect pieces.

#### IGNITION FUNCTIONAL CHECK 1



## IGNITION FUNCTIONAL CHECK 2



## FLAME FAILURE FUNCTIONAL CHECK

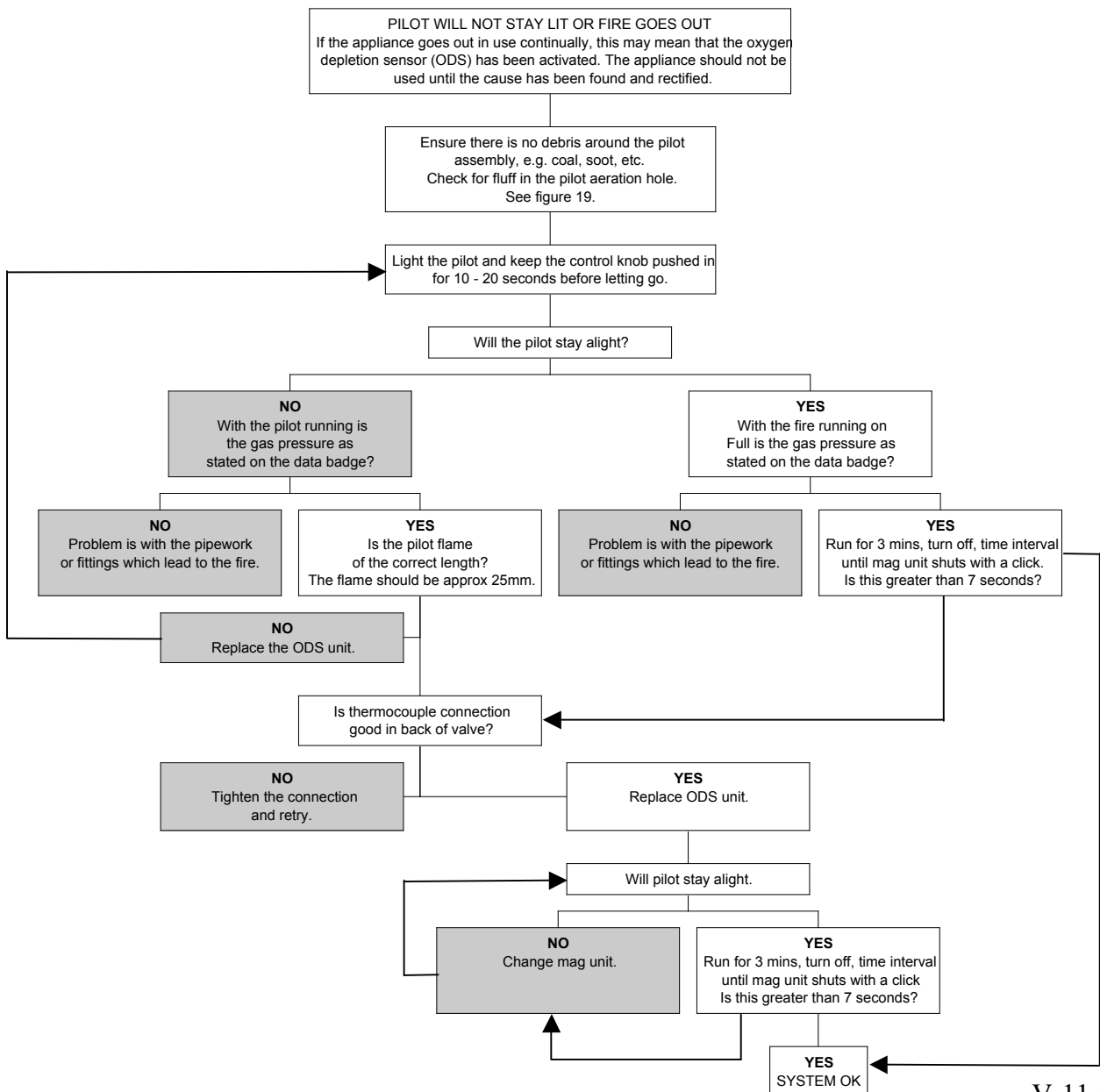


FIG 6

