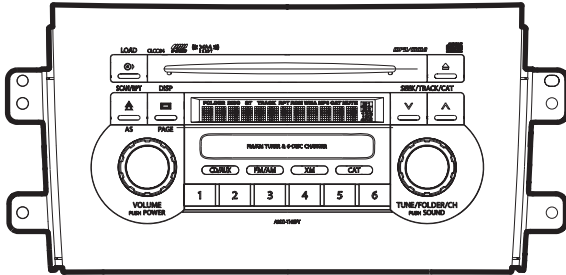


# Service Manual



## SUZUKI Automobile Genuine AM/FM TUNER CD COMBI

Model **PS-2808K-A**  
 (Genuine No.39101-80J40-CZT)  
 ID No.CLCC04

## SPECIFICATIONS

### Radio section

|                               |  |
|-------------------------------|--|
| Tuning system:                | PLL Frequency synthesizer system   |
| Receive range:                | AM 530kHz to 1710kHz<br>FM 87.75MHz to 107.9MHz                            |
| Intermediate frequency:       | AM 1st 10.71 +0.2/-0.2MHz<br>2nd 450 +3/-3kHz<br>FM 10.7 +0.2/-0.2MHz      |
| Quieting sensitivity:         | AM Less than 39dBu<br>(at 20dB S/N)<br>FM Less than 15dBu<br>(at 30dB S/N) |
| Auto tuning stop sensitivity: | AM 42 +6/-6dBu<br>FM 24 +6/-6dBu   |
| FM Separation:                | More than 20dB   |

### CD section

|             |                           |
|-------------|---------------------------|
| Disc:       | 12cm Disc                 |
| Separation: | More than 55dB            |
| S/N ratio:  | More than 70dB(JIS-A)     |
| Distortion: | Less than 0.3%(20kHz-LPF) |

### MP3/WMA section

|                    |                                      |
|--------------------|--------------------------------------|
| MP3 sampling rate: | 11.025kHz to 48kHz                   |
| MP3 bit rate:      | 8kbps to 320kbps/VBR                 |
| WMA bit rate:      | 48kbps to 192kbps                    |
| Logical format:    | ISO9660 level 1,2<br>JOLIET or Romeo |

### General

|                      |   |
|----------------------|---|
| Rated Voltage :      | DC 13.2V  |
| Quiting Output:      | More Than 12Wx4 (10% Dist.)<br>More Than 16Wx4 (Max Output) |
| Back-up consumption: | Less than 5mA   |
| Dimensions(mm):      | 248.4(W)x141.5(H)x176.9(D)                                  |
| Weight:              | approx.1.8kg  |

## NOTE

- \* We cannot supply PWB with component parts in principle. When a circuit on PWB has failure, please repair it by component parts base. Parts which are not mentioned in service manual are not supplied.
- \* Specifications and design are subject to change without notice for further improvement.
- \* WMA is the abbreviation of Windows Media Audio, an audio file format developed by Microsoft Corporation.
- \* This product includes technology owned by Microsoft Corporation and cannot be used or distributed without a license from MSLGP.

## COMPONENTS

|              |         |
|--------------|---------|
| PS-2808K-A   |         |
| 1. Main unit | ----- 1 |

## To engineers in charge of repair or inspection of our products.

Before repair or inspection, make sure to follow the instructions so that customers and Engineers in charge of repair or inspection can avoid suffering any risk or injury.

1. Use specified parts.
 

The system uses parts with special safety features against fire and voltage. Use only parts with equivalent characteristics when replacing them.

The use of unspecified parts shall be regarded as remodeling for which we shall not be liable. The onus of product liability (PL) shall not be our responsibility in cases where an accident or failure is as a result of unspecified parts being used.
2. Place the parts and wiring back in their original positions after replacement or re-wiring.
 

For proper circuit construction, use of insulation tubes, bonding, gaps to PWB, etc, is involved. The wiring connection and routing to the PWB are specially planned using clamps to keep away from heated and high voltage parts. Ensure that they are placed back in their original positions after repair or inspection.

If extended damage is caused due to negligence during repair, the legal responsibility shall be with the repairing company.
3. Check for safety after repair.
 

Check that the screws, parts and wires are put back securely in their original position after repair. Ensure for safety reasons there is no possibility of secondary problems around the repaired spots.

If extended damage is caused due to negligence of repair, the legal responsibility shall be with the repairing company.
4. Caution in removal and making wiring connection to the parts for the automobile.
 

Disconnect the battery terminal after turning the ignition key off. If wrong wiring connections are made with the battery connected, a short circuit and/or fire may occur. If extensive damage is caused due to negligence of repair, the legal responsibility shall be with the repairing company.
5. Cautions in soldering
 

Please do not spread liquid flux in soldering.

Please do not wash the soldering point after soldering.
6. Cautions in soldering for chip capacitors
 

Please solder the chip capacitors after pre-heating for replacement because they are very weak to heat.

Please do not heat the chip capacitors with a soldering iron directly.
7. Cautions in handling for chip parts.
 

Do not reuse removed chips even when no abnormality is observed in their appearance. Always replace them with new ones. (The chip parts include resistors, capacitors, diodes, transistors, etc).

Please make an operation test after replacement.
8. Cautions in handling flexible PWB
 

Before working with a soldering iron, make sure that the iron tip temperature is around 270°C. Take care not to apply the iron tip repeatedly (more than three times) to the same patterns. Also take care not to apply the tip with force.

9. Turn the unit OFF during disassembly and parts replacement.
 

Recheck all work before you apply power to the unit.
10. Cautions in checking that the optical pickup lights up.
 

The laser is focused on the disc reflection surface through the lens of the optical pickup. When checking that the laser optical diode lights up, keep your eyes more than 30cms away from the lens. Prolonged viewing of the laser within 30cms may damage your eyesight.
11. Cautions in handling the optical pickup
 

The laser diode of the optical pickup can be damaged by electrostatic charge caused by your clothes and body. Make sure to avoid electrostatic charges on your clothes or body, or discharge static electricity before handling the optical pickup.
- 11-1. Laser diode
 

The laser diode terminals are shorted for transportation in order to prevent electrostatic damage. After replacement, open the shorted circuit. When removing the pickup from the mechanism, short the terminals by soldering them to prevent this damage.
- 11-2. Actuator
 

The actuator has a powerful magnetic circuit. If a magnetic material is put close to it. Its characteristics will change. Ensure that no foreign substances enter through the ventilation slots in the cover.
- 11-3. Cleaning the lens
 

Dust on the optical lens affects performance.

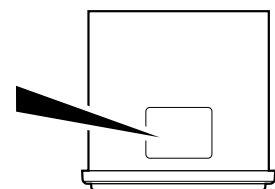
To clean the lens, apply a small amount of isopropyl alcohol to lens paper and wipe the lens gently.

## CAUTIONS

Use of controls, adjustments, or performance of procedures other than those specified herein, may result in hazardous radiation exposure.

The compact disc player should not be adjusted or repaired by anyone except properly qualified service personnel.

|  |  |
|--|--|
| <b>Clarion</b>   |  |
| MODEL NO.  |  |
| 12V (-) GROUND   |  |
| SERIAL NO.   |  |
| MANUFACTURED   |  |
|  |  |
| THIS DEVICE COMPLIES WITH PART 15 OF THE FCC RULES. OPERATION IS SUBJECT TO THE FOLLOWING TWO CONDITIONS: (1) THIS DEVICE MAY NOT CAUSE HARMFUL INTERFERENCE AND (2) THIS DEVICE MUST ACCEPT ANY INTERFERENCE RECEIVED, INCLUDING INTERFERENCE THAT MAY CAUSE UNDESIRABLE OPERATION. |  |
| THIS PRODUCTION COMPLIES WITH DHS RULES 21 CFR SUBCHAPTER J APPLICABLE AT DATE OF MANUFACTURE.   |  |
| FREQUENCY RANGE  |  |
| AM: 530 KHz - 1710 KHz   |  |
| FM: 87.75 MHz - 107.9 MHz  |  |
| CLARION Co., Ltd.  |  |
| 50 KAMITODA, TODA SHI, SAI TAMA KEN, JAPAN   |  |
| PART No.   |  |



# EXPLANATION OF IC

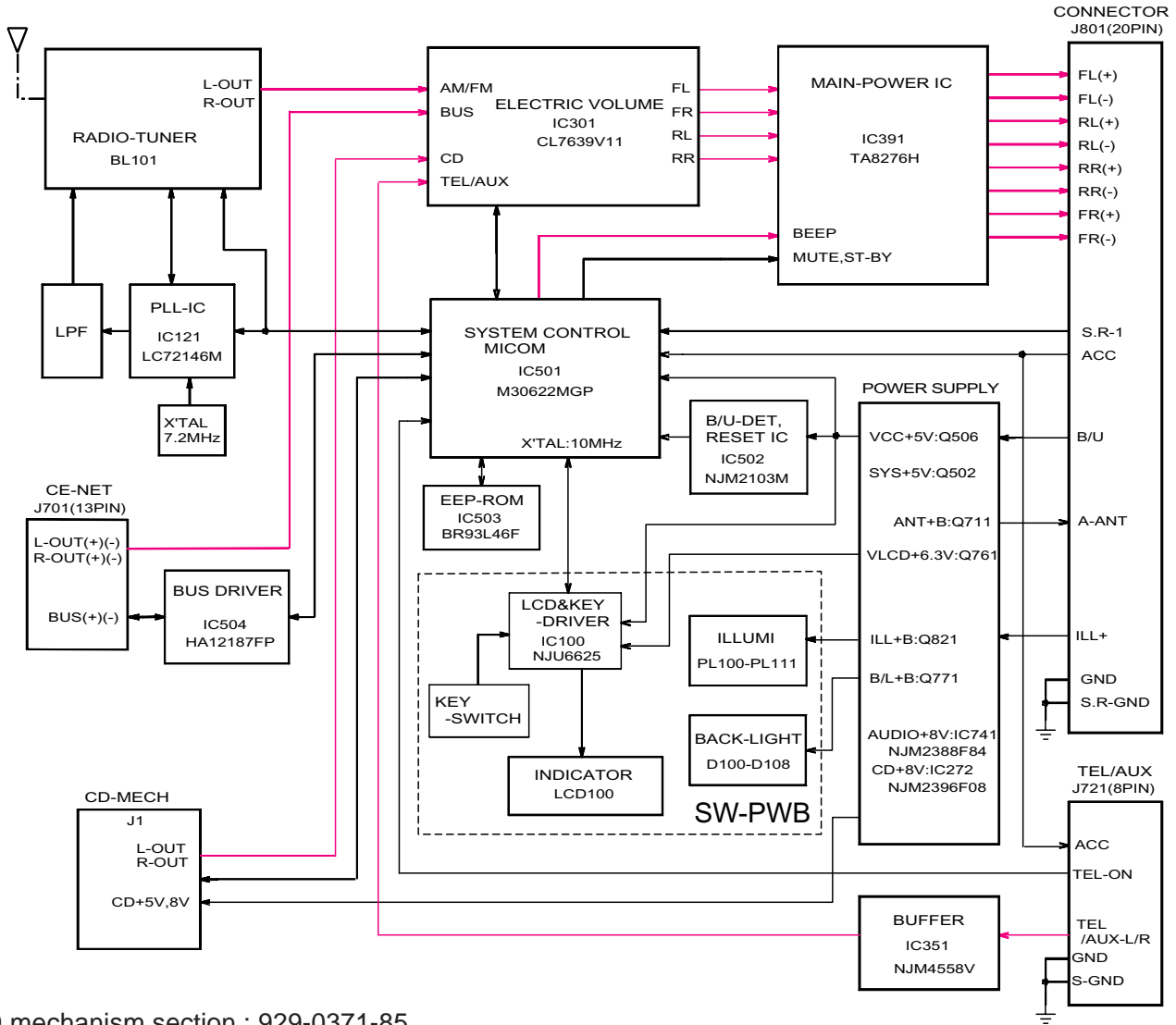
052-3196-21 M30622MGP-E22GP System Controller

## Terminal Description

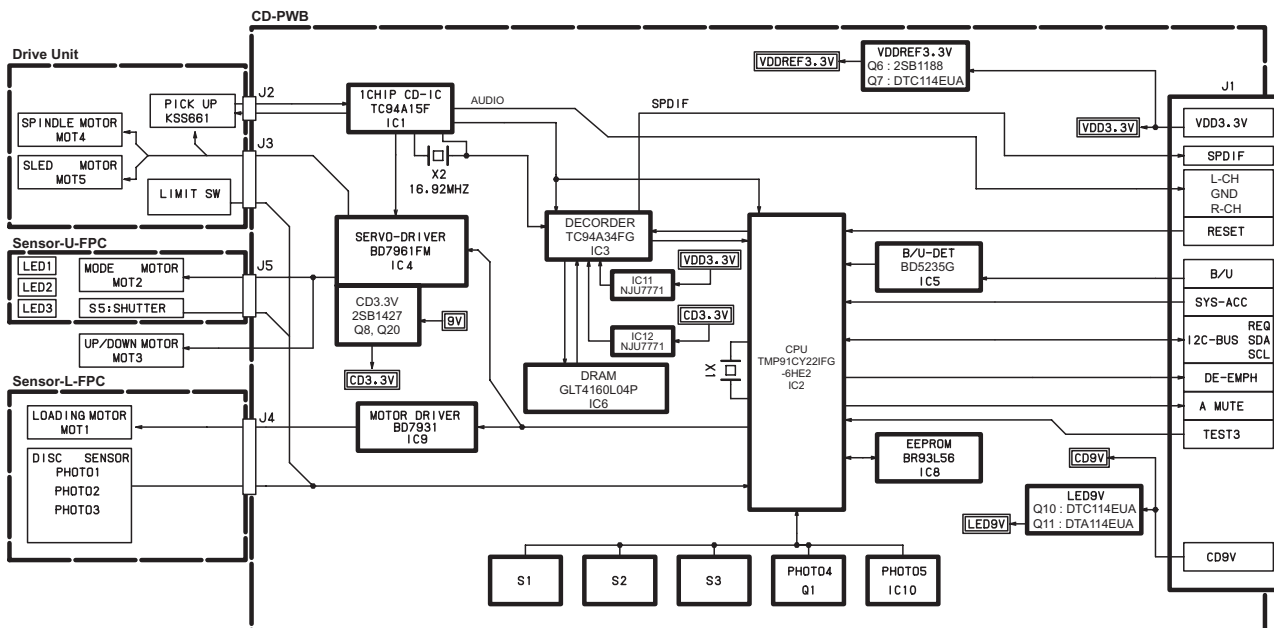
|                       |  |                    |  |
|-----------------------|--|--------------------|--|
| pin 1: PLL CK         | : O : PLL clock pulse output.                                  | pin 61: CD CS      | : O : Chip select signal output to the CD mechanism.   |
| pin 2: PLL DO         | : O : PLL serial data output.                                  | pin 62: GND        | : - : Ground.  |
| pin 3: PLL CE         | : O : PLL chip enable signal output.                           | pin 63: CD WAKEUP  | : O : Wakeup signal output to the CD mechanism.  |
| pin 4: NU             | : O : Not in use.  | pin 64: CD RESET   | : O : Reset pulse output to the CD mechanism.  |
| pin 5: NU             | : O : Not in use.  | pin 65: LCD RESET  | : O : Reset pulse output to the LCD.   |
| pin 6: BYTE           | : IN : Data length selection(8bit/16bit).                      | pin 66: LCD CS     | : O : Chip select signal output to the LCD driver.   |
| pin 7: CN VSS         | : IN : Connect to VSS via a resistor.                          | pin 67: LCD CK     | : O : Clock pulse output to the LCD driver.  |
| pin 8: ANT-ON / TP    | : O : Antenna-ON signal output, and the test signal output.    | pin 68: LCD DATA   | : I/O : Serial data input/output for the LCD driver.   |
| pin 9: BL CONT        | : O : Back light control signal output.                        | pin 69: LCD REQ    | : IN : The key interrupt request signal input from the LCD driver.   |
| pin 10: RESET         | : IN : Reset signal input.                                     | pin 70: VOL 1 L    | : IN : Volume control pulse input from the rotary encoder.   |
| pin 11: X out         | : O : Crystal connection.                                      | pin 71: VOL 2 L    | : IN : Volume control pulse input from the rotary encoder.   |
| pin 12: VSS           | : - : Negative voltage supply.                                 | pin 72: GIX REQ    | : IN : 6CD Request signal input.   |
| pin 13: X in          | : IN : Crystal connection.                                     | pin 73: NU         | : O : Not in use.  |
| pin 14: VDD           | : - : Positive voltage supply.                                 | pin 74: VOL 1 R    | : IN : Volume control pulse input from the rotary encoder.   |
| pin 15: NMI           | : IN : Nonmaskable interrupt. Connect to VDD via a resistor.   | pin 75: VOL 2 R    | : IN : Volume control pulse input from the rotary encoder.   |
| pin 16: ACC DET       | : IN : ACC detection signal input.                             | pin 76: NU         | : O : Not in use.  |
| pin 17: BU DET        | : IN : Backup detection signal input.                          | pin 77: NU         | : O : Not in use.  |
| pin 18: Speed Pulse   | : IN : Speed pulse input.                                      | pin 78: NU         | : O : Not in use.  |
| pin 19: BL ON         | : O : Back light ON command output.                            | pin 79: NU         | : O : Not in use.  |
| pin 20: EQ S ACTIVE   | : IN : H = When changing the soft-ware.                        | pin 80: NU         | : O : Not in use.  |
| pin 21: EQ DATA       | : O : EQ serial data output.                                   | pin 81: NU         | : O : Not in use.  |
| pin 22: VOL EQ CK     | : O : Clock pulse output to the volume IC or the equalizer IC. | pin 82: NU         | : O : Not in use.  |
| pin 23: VOL DATA      | : O : Serial data output to the volume IC.                     | pin 83: SEL 1      | : IN : L = 1CD, H = 6CD.   |
| pin 24: BEEP          | : O : Beep out.  | pin 84: SEL 2      | : IN : Fixed to L.   |
| pin 25: 27pin connect | : IN : Connect to 27pin.                                       | pin 85: SEL 3      | : IN : L = YT4, H = YY3.   |
| pin 26: LCD IC VLCD   | : O : LCD-bias-voltage ON-signal output.                       | pin 86: SEL 4      | : IN : L = Without EQ.   |
| pin 27: Ce-NET RX     | : IN : Serial data input from the Ce-NET.                      | pin 87: POWER SW   | : IN : Power switch ON signal input.   |
| pin 28: Ce-NET TX     | : O : Serial data output to the Ce-NET.                        | pin 88: CD LOAD    | : IN : CD loding detection signal input.   |
| pin 29: FLASH TX      | : O : Flash memory Serial data output.                         | pin 89: CD EJECT   | : IN : CD eject switch signal input.   |
| pin 30: FLASH RX      | : IN : Flash memory Serial data input.                         | pin 90: NU         | : O : Not in use.  |
| pin 31: FLASH CK      | : IN : Flash memory Clock.                                     | pin 91: NU         | : O : Not in use.  |
| pin 32: ILL ON        | : IN : Illumination ON signal input.                           | pin 92: NU         | : O : Not in use.  |
| pin 33: GIX SDA       | : O : 6CD serial data output.                                  | pin 93: S REMOCON  | : IN : Steering wheel remote controller input.   |
| pin 34: GIX SCL       | : O : 6CD serial clock output.                                 | pin 94: A VSS      | : - : Analog ground.   |
| pin 35: SYS ON        | : O : System ON signal output.                                 | pin 95: AUX/TEL ON | : IN : AUX/TEL ON signal input.  |
| pin 36: AMP ON        | : O : Audio power amplifier ON signal output.                  | pin 96: Vref       | : - : Reference voltage.   |
| pin 37: AMP MUTE      | : O : Muting signal output to the Audio power amplifier.       | pin 97: A VCC      | : - : Positive voltage supply for the internal analog section.   |
| pin 38: TEL KEY OUT   | : O : L = Tel Key ON.  | pin 98: SD/ST      | : IN : At receiving the FM station, this port detects the stereo signal. At seeking or scanning, this port detects the station detection signal. |
| pin 39: SYS ACC       | : O : ACC detect signal output.                                | pin 99: NU         | : O : Not in use.  |
| pin 40: CATS TP OUT   | : O : For CATS test.   | pin100: PLL DI     | : IN : PLL serial data input.  |
| pin 41: CD ON         | : O : CD ON signal output.                                     |                    |  |
| pin 42: NU            | : O : Not in use.  |                    |  |
| pin 43: NU            | : O : Not in use.  |                    |  |
| pin 44: FLASH CE      | : IN : Flash memory Chip enable.                               |                    |  |
| pin 45: NU            | : O : Not in use.  |                    |  |
| pin 46: EEP CK        | : O : EEP-ROM clock pulse out.                                 |                    |  |
| pin 47: EEP CS        | : O : EEP-ROM chip select signal out.                          |                    |  |
| pin 48: EEP DO        | : O : Serial data output to EEP-ROM.                           |                    |  |
| pin 49: EEP DI        | : IN : Serial data input from EEP-ROM.                         |                    |  |
| pin 50: GIX SYS ACC   | : O : 6CD SYS ACC output. L = Power off.                       |                    |  |
| pin 51: GIX RESET     | : O : 6CD Reset output. L = Reset.                             |                    |  |
| pin 52: NU            | : O : Not in use.  |                    |  |
| pin 53: NU            | : O : Not in use.  |                    |  |
| pin 54: NU            | : O : Not in use.  |                    |  |
| pin 55: NU            | : O : Not in use.  |                    |  |
| pin 56: CD CK         | : O : CD Clock Pulse output.                                   |                    |  |
| pin 57: CD SI         | : IN : Serial data input from the CD mechanism.                |                    |  |
| pin 58: CD SO         | : O : Serial data output to the CD mechanism.                  |                    |  |
| pin 59: CD SRQ        | : IN : SRQ input from the CD mechanism.                        |                    |  |
| pin 60: VDD           | : - : Positive voltage supply.                                 |                    |  |

# BLOCK DIAGRAM

## Main section

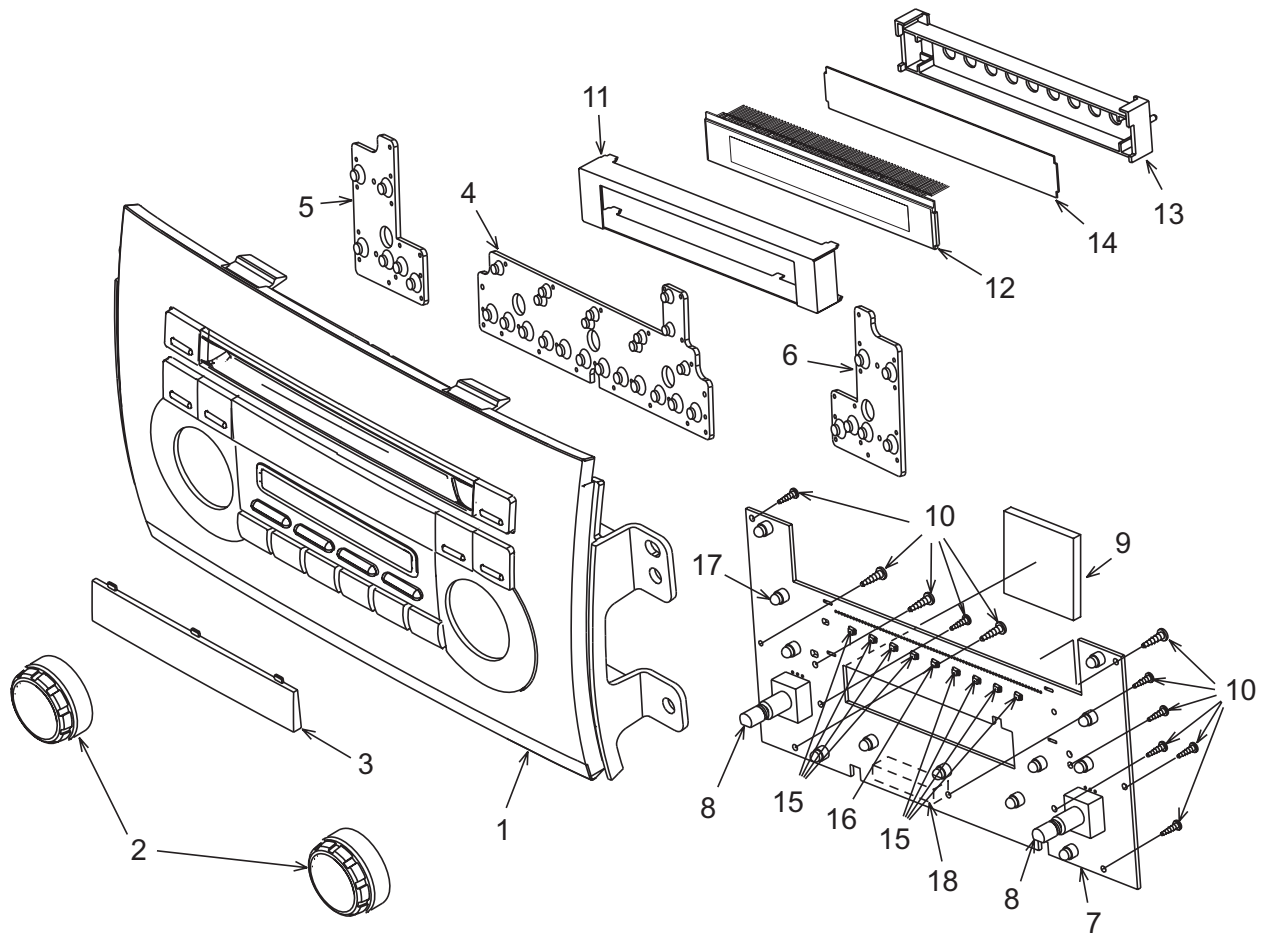


CD mechanism section : 929-0371-85



# EXPLODED VIEW/PARTS LIST

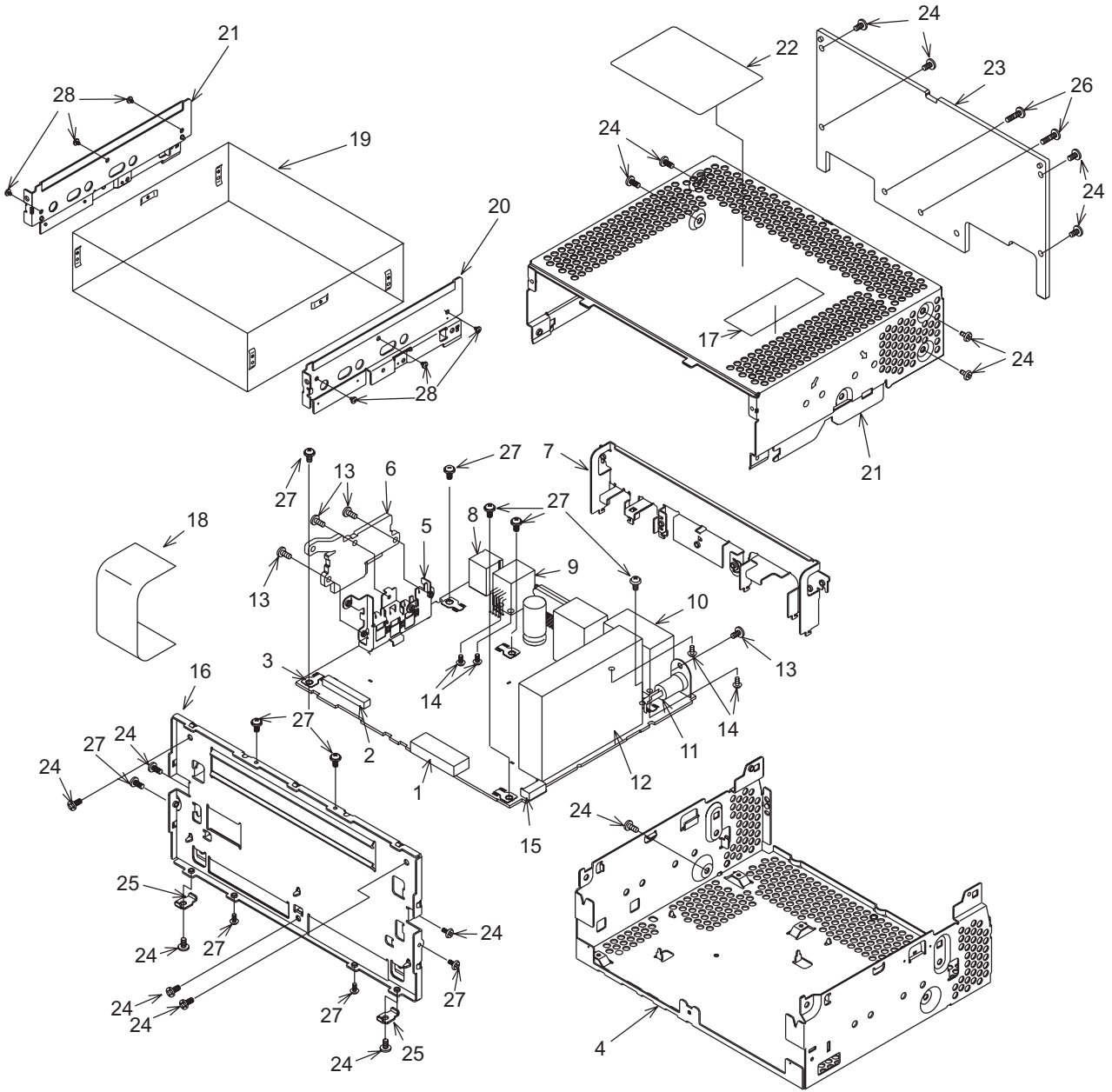
Escutcheon section



Clamping torque value of a screw is 0.2 +0.04/-0.04 Newton meter.

| NO. | PART NO.    | DESCRIPTION        | Q'TY | NO. | PART NO.    | DESCRIPTION            | Q'TY |
|-----|-------------|--------------------|------|-----|-------------|------------------------|------|
| 1   | 940-8120-11 | ESCUTCHEON ASSY    | 1    | 10  | 716-0778-51 | P-TITE SCREW (2x6)     | 11   |
| 2   | 947-0602-00 | KNOB ASSY          | 2    | 11  | 331-4264-00 | LCD COVER              | 1    |
| 3   | 371-5854-10 | DIAL COVER         | 1    | 12  | 379-1362-51 | INDICATOR (LCD)        | 1    |
| 4   | 345-5589-00 | RUBBER SW (CENTER) | 1    | 13  | 335-7705-00 | LCD HOLDER             | 1    |
| 5   | 345-5590-00 | RUBBER SW (LEFT)   | 1    | 14  | 335-7929-00 | COLOR FILTER           | 1    |
| 6   | 345-5591-00 | RUBBER SW (RIGHT)  | 1    | 15  | 001-7048-91 | DIODE RED              | 8    |
| 7   | -----       | Switch PWB         | 1    | 16  | 001-7087-90 | DIODE RED              | 1    |
| 8   | 016-0014-12 | VR W/SHAFT         | 2    | 17  | 017-0420-43 | PL LAMP (14V 40mA RED) | 12   |
| 9   | 345-6006-00 | PROTECTOR          | 2    | 18  | 074-3013-74 | OUTLETSOCKET           | 1    |

Main section



Clamping torque value of a screw is 0.4 +0.08/-0.08 Newton meter.

| NO. | PART NO.    | DESCRIPTION           | Q'TY |
|-----|-------------|-----------------------|------|
| 1   | 076-0662-74 | PLUG(26P)             | 1    |
| 2   | 074-1237-69 | OUTLET SOCKET         | 1    |
| 3   | 073-0762-90 | TERMINAL              | 5    |
| 4   | 311-1919-02 | LOWER CASE            | 1    |
| 5   | 331-4126-00 | TR HOLDER             | 1    |
| 6   | 313-1966-00 | SUB HEAT SINK         | 1    |
| 7   | 331-4127-00 | REAR PLATE            | 1    |
| 8   | 074-1194-00 | OUTLET SOCKET         | 1    |
| 9   | 074-1302-08 | OUTLET SOCKET         | 1    |
| 10  | 074-4007-20 | OUTLET SOCKET         | 1    |
| 11  | 092-0702-00 | ANT-RECEPT            | 1    |
| 12  | 941-0221-70 | TUNER PACK            | 2    |
| 13  | 714-2606-8B | MACHINE SCREW(M2.6x6) | 4    |
| 14  | 778-3006-00 | TAP-SCREW(3x6)        | 4    |
| 15  | 076-0717-09 | PLUG                  | 1    |

| NO. | PART NO.    | DESCRIPTION            | Q'TY |
|-----|-------------|------------------------|------|
| 16  | 309-0819-10 | ES PLATE               | 1    |
| 17  | 285-1960-00 | GUIDE LABEL            | 1    |
| 18  | 816-4024-50 | FLAT WIRE              | 1    |
| 19  | 929-0371-85 | CD-MECH-MODULE         | 1    |
| 20  | 331-4091-10 | CD BRKT(L)             | 1    |
| 21  | 331-4092-10 | CD BRKT(R)             | 1    |
| 22  | 310-1826-00 | UPPER CASE             | 1    |
| 23  | 286-6224-25 | SETPLATE               | 1    |
| 24  | 313-1962-00 | HEAT SINK              | 1    |
| 25  | 714-2606-8B | MACHINE SCREW(M2.6x6)  | 16   |
| 26  | 331-4193-20 | SU-PLATE               | 2    |
| 27  | 714-2610-89 | MACHINE SCREW(M2.6x10) | 2    |
| 28  | 716-0878-50 | IT SCREW(M2.6x5)       | 11   |
| 29  | 716-3552-00 | IT SCREW(M2.3x2.5)     | 6    |

# ELECTRICAL PARTS LIST

## Switch PWB section (B1)

| REF No. | PART No.    | DESCRIPTION            | REF No. | PART No.    | DESCRIPTION   | REF No. | PART No.    | DESCRIPTION               |
|---------|-------------|------------------------|---------|-------------|---------------|---------|-------------|---------------------------|
| C100    | 168-1042-78 | 16V 0.1uF              | D115    | 001-0516-90 | MA111         | R110    | 119-4711-15 | 1/10W 470 ohm             |
| C101    | 168-1042-78 | 16V 0.1uF              | D116    | 001-0516-90 | MA111         | R111    | 119-4711-15 | 1/10W 470 ohm             |
| C102    | 168-1042-78 | 16V 0.1uF              | IC100   | 051-6084-00 | NJU6625FG1-03 | R112    | 119-8211-15 | 1/10W 820 ohm             |
| C103    | 168-1042-78 | 16V 0.1uF              | J100    | 074-3013-74 | 24P           | R113    | 119-8211-15 | 1/10W 820 ohm             |
| C104    | 168-1042-78 | 16V 0.1uF              | L100    | 010-3406-66 | 22uH J        | R114    | 119-7511-15 | 1/10W 750 ohm             |
| C105    | 178-1052-78 | 1uF                    | PL100   | 017-0420-43 | 14V 40mA RED  | R116    | 119-0000-05 | 1/10W 0 ohm JW            |
| D100    | 001-7048-91 | RFR1112H-22 C,D<br>RED | PL101   | 017-0420-43 | 14V 40mA RED  | R117    | 119-0000-05 | 1/10W 0 ohm JW            |
| D101    | 001-7048-91 | RFR1112H-22 C,D<br>RED | PL102   | 017-0420-43 | 14V 40mA RED  | R121    | 119-4341-15 | 1/10W 430k ohm            |
| D102    | 001-7048-91 | RFR1112H-22 C,D<br>RED | PL104   | 017-0420-43 | 14V 40mA RED  | R122    | 119-0000-05 | 1/10W 0 ohm JW            |
| D103    | 001-7048-91 | RFR1112H-22 C,D<br>RED | PL105   | 017-0420-43 | 14V 40mA RED  | R123    | 119-0000-05 | 1/10W 0 ohm JW            |
| D104    | 001-7087-90 | RBR1112H C,D,E<br>RED  | PL106   | 017-0420-43 | 14V 40mA RED  | R125    | 119-0000-05 | 1/10W 0 ohm JW            |
| D105    | 001-7048-91 | RFR1112H-22 C,D<br>RED | PL107   | 017-0420-43 | 14V 40mA RED  | R126    | 119-0000-05 | 1/10W 0 ohm JW            |
| D106    | 001-7048-91 | RFR1112H-22 C,D<br>RED | PL108   | 017-0420-43 | 14V 40mA RED  | R128    | 119-1021-15 | 1/10W 1k ohm              |
| D107    | 001-7048-91 | RFR1112H-22 C,D<br>RED | PL109   | 017-0420-43 | 14V 40mA RED  | R129    | 119-1021-15 | 1/10W 1k ohm              |
| D108    | 001-7048-91 | RFR1112H-22 C,D<br>RED | PL110   | 017-0420-43 | 14V 40mA RED  | R131    | 119-0000-05 | 1/10W 0 ohm JW            |
| D113    | 001-0516-90 | MA111                  | PL111   | 017-0420-43 | 14V 40mA RED  | R132    | 119-0000-05 | 1/10W 0 ohm JW            |
| D114    | 001-0516-90 | MA111                  | R100    | 119-5611-15 | 1/10W 560 ohm | R200    | 119-1841-15 | 1/10W 180k ohm            |
|         |             |                        | R101    | 119-4711-15 | 1/10W 470 ohm | R201    | 119-1841-15 | 1/10W 180k ohm            |
|         |             |                        | R102    | 119-4711-15 | 1/10W 470 ohm | R202    | 119-1841-15 | 1/10W 180k ohm            |
|         |             |                        | R103    | 119-5611-15 | 1/10W 560 ohm | R203    | 119-1841-15 | 1/10W 180k ohm            |
|         |             |                        | R104    | 119-4711-15 | 1/10W 470 ohm | TH100   | 002-0306-90 | SC20-3J153                |
|         |             |                        | R105    | 119-4711-15 | 1/10W 470 ohm | TM100   | 073-0778-90 | TERMINAL                  |
|         |             |                        | R106    | 119-5611-15 | 1/10W 560 ohm | VR100   | 016-0014-12 | VR W/SHAFT                |
|         |             |                        | R107    | 119-4711-15 | 1/10W 470 ohm | VR101   | 016-0014-12 | VR W/SHAFT                |
|         |             |                        | R108    | 119-4711-15 | 1/10W 470 ohm | PWB     | 039-2920-00 | PWB(WITHOUT<br>COMPONENT) |
|         |             |                        | R109    | 119-5611-15 | 1/10W 560 ohm |         |             |                           |

## Main PWB section (B2)

| REF No. | PART No.    | DESCRIPTION | REF No. | PART No.    | DESCRIPTION | REF No. | PART No.    | DESCRIPTION      |
|---------|-------------|-------------|---------|-------------|-------------|---------|-------------|------------------|
| ANT101  | 092-0702-00 | ANT-RECEPT  | C306    | 178-1052-78 | 1uF         | C395    | 168-1032-55 | 0.01uF K         |
| BL101   | 941-0221-70 | TUNER PACK  | C309    | 168-2232-55 | 0.022uF K   | C396    | 163-1053-65 | 50V 1uF          |
| C103    | 168-2232-55 | 0.022uF K   | C310    | 168-2232-55 | 0.022uF K   | C397    | 042-1624-00 | 4700 16V         |
| C104    | 188-1073-28 | 10V 100uF   | C311    | 188-2253-68 | 50V 2.2uF   | C398    | 163-1063-35 | 16V 10uF         |
| C105    | 168-1042-78 | 16V 0.1uF   | C312    | 188-2253-68 | 50V 2.2uF   | C399    | 163-1053-65 | 50V 1uF          |
| C106    | 168-1042-78 | 16V 0.1uF   | C313    | 188-2253-68 | 50V 2.2uF   | C501    | 168-1042-78 | 16V 0.1uF        |
| C107    | 188-1073-28 | 10V 100uF   | C314    | 188-2253-68 | 50V 2.2uF   | C502    | 188-4763-18 | 6.3V 47uF        |
| C108    | 168-1042-78 | 16V 0.1uF   | C318    | 168-1522-55 | 1500pF K    | C503    | 168-1032-55 | 0.01uF K         |
| C109    | 168-2232-55 | 0.022uF K   | C319    | 168-1522-55 | 1500pF K    | C504    | 168-1032-55 | 0.01uF K         |
| C111    | 168-2232-55 | 0.022uF K   | C322    | 188-1063-38 | 16V 10uF    | C505    | 168-1032-55 | 0.01uF K         |
| C112    | 168-4745-79 | 0.47uF Z    | C323    | 188-1063-38 | 16V 10uF    | C506    | 168-1042-78 | 16V 0.1uF        |
| C113    | 168-5632-78 | 16V 0.056uF | C324    | 188-1073-28 | 10V 100uF   | C507    | 188-1053-68 | 50V 1uF          |
| C114    | 168-5632-78 | 16V 0.056uF | C325    | 168-1042-78 | 16V 0.1uF   | C509    | 168-1022-55 | 1000pF K         |
| C121    | 166-1501-50 | 15pF CH     | C326    | 188-1053-68 | 50V 1uF     | C510    | 168-1022-55 | 1000pF K         |
| C122    | 188-4763-38 | 16V 47uF    | C327    | 188-1053-68 | 50V 1uF     | C511    | 168-1042-78 | 16V 0.1uF        |
| C123    | 168-1022-55 | 1000pF K    | C328    | 188-2253-68 | 50V 2.2uF   | C512    | 168-1032-55 | 0.01uF K         |
| C124    | 042-1458-90 | 50V 1uF LN  | C329    | 188-2253-68 | 50V 2.2uF   | C513    | 189-1073-29 | 10V 100uF        |
| C125    | 166-1501-50 | 15pF CH     | C330    | 168-2222-55 | 2200pF K    | C514    | 168-1042-78 | 16V 0.1uF        |
| C126    | 166-1011-50 | 100pF CH    | C331    | 168-2222-55 | 2200pF K    | C515    | 166-1011-50 | 100pF CH         |
| C127    | 166-1011-50 | 100pF CH    | C332    | 178-3342-78 | 0.33uF      | C516    | 188-1063-38 | 16V 10uF         |
| C128    | 166-1011-50 | 100pF CH    | C333    | 178-3342-78 | 0.33uF      | C517    | 042-0559-00 | 0.1F 5.5V        |
| C129    | 166-1011-50 | 100pF CH    | C334    | 166-4711-50 | 470pF CH    | C722    | 168-1042-78 | 16V 0.1uF        |
| C130    | 168-2232-55 | 0.022uF K   | C335    | 166-4711-50 | 470pF CH    | C731    | 172-1041-15 | 0.1uF            |
| C131    | 188-4763-38 | 16V 47uF    | C346    | 188-1073-28 | 10V 100uF   | C732    | 188-1053-68 | 50V 1uF          |
| C132    | 166-1811-50 | 180pF CH    | C352    | 168-1042-78 | 16V 0.1uF   | C741    | 043-0328-90 | 0.1uF            |
| C133    | 168-1042-78 | 16V 0.1uF   | C353    | 042-1562-15 | 10V 220uF   | C744    | 188-1073-28 | 10V 100uF        |
| C160    | 168-1042-78 | 16V 0.1uF   | C354    | 166-2201-50 | 22pF CH     | C761    | 188-1063-38 | 16V 10uF         |
| C212    | 188-4763-38 | 16V 47uF    | C355    | 166-2201-50 | 22pF CH     | C762    | 188-1063-38 | 16V 10uF         |
| C222    | 168-1042-78 | 16V 0.1uF   | C356    | 166-1007-50 | 10pF CH     | C771    | 188-1073-28 | 10V 100uF        |
| C241    | 168-2232-55 | 0.022uF K   | C357    | 166-1007-50 | 10pF CH     | C772    | 188-1063-38 | 16V 10uF         |
| C243    | 188-4763-38 | 16V 47uF    | C358    | 188-1063-38 | 16V 10uF    | C791    | 188-4756-58 | 35V 4.7uF        |
| C244    | 168-1042-78 | 16V 0.1uF   | C359    | 188-1063-38 | 16V 10uF    | C792    | 168-1042-78 | 16V 0.1uF        |
| C245    | 168-1042-78 | 16V 0.1uF   | C360    | 188-1063-38 | 16V 10uF    | C811    | 172-1041-15 | 0.1uF            |
| C274    | 189-2273-29 | 10V 220uF   | C361    | 188-1063-38 | 16V 10uF    | C821    | 188-1063-38 | 16V 10uF         |
| C276    | 043-0328-90 | 0.1uF       | C391    | 168-1042-78 | 16V 0.1uF   | CCT501  | 050-0140-54 | 1/32W 1k ohm x4J |
| C301    | 178-1052-78 | 1uF         | C392    | 168-1042-78 | 16V 0.1uF   | CCT504  | 050-0140-54 | 1/32W 1k ohm x4J |
| C302    | 178-1052-78 | 1uF         | C393    | 168-1042-78 | 16V 0.1uF   | CCT505  | 050-0140-54 | 1/32W 1k ohm x4J |
| C305    | 178-1052-78 | 1uF         | C394    | 168-1042-78 | 16V 0.1uF   | D391    | 001-0516-90 | MA111            |

| REF No. | PART No.    | DESCRIPTION      | REF No. | PART No.    | DESCRIPTION     | REF No. | PART No.    | DESCRIPTION     |
|---------|-------------|------------------|---------|-------------|-----------------|---------|-------------|-----------------|
| D505    | 001-0516-90 | MA111            | R101    | 119-0000-05 | 1/10W 0 ohm JW  | R503    | 119-4721-15 | 1/10W 4.7k ohm  |
| D506    | 001-2403-90 | M1F60            | R102    | 119-0000-05 | 1/10W 0 ohm JW  | R504    | 119-4721-15 | 1/10W 4.7k ohm  |
| D507    | 001-4301-25 | HZU4.7B1         | R103    | 119-1041-15 | 1/10W 100k ohm  | R510    | 119-4721-15 | 1/10W 4.7k ohm  |
| D508    | 001-0466-90 | S5688B           | R104    | 119-2221-15 | 1/10W 2.2k ohm  | R511    | 119-4721-15 | 1/10W 4.7k ohm  |
| D509    | 001-0504-36 | S5689B           | R105    | 119-3911-15 | 1/10W 390 ohm   | R512    | 119-4721-15 | 1/10W 4.7k ohm  |
| D701    | 001-0424-31 | MA4180           | R106    | 119-2221-15 | 1/10W 2.2k ohm  | R513    | 119-4721-15 | 1/10W 4.7k ohm  |
| D702    | 001-0424-31 | MA4180           | R107    | 116-1001-15 | 1/4W 10 ohm     | R514    | 119-1021-15 | 1/10W 1k ohm    |
| D703    | 001-0424-31 | MA4180           | R108    | 119-2231-15 | 1/10W 22k ohm   | R515    | 119-1041-15 | 1/10W 100k ohm  |
| D711    | 001-0466-90 | S5688B           | R109    | 119-5121-15 | 1/10W 5.1k ohm  | R516    | 119-1041-15 | 1/10W 100k ohm  |
| D712    | 001-0466-90 | S5688B           | R111    | 166-8201-50 | 82pF CH         | R517    | 116-1001-15 | 1/4W 10 ohm     |
| D731    | 001-0466-90 | S5688B           | R121    | 119-0000-05 | 1/10W 0 ohm JW  | R520    | 119-4731-15 | 1/10W 47k ohm   |
| D761    | 001-0504-39 | HZS7B2L          | R122    | 119-3321-15 | 1/10W 3.3k ohm  | R521    | 119-4731-15 | 1/10W 47k ohm   |
| D771    | 001-0347-43 | MA40482LTA       | R123    | 119-4721-15 | 1/10W 4.7k ohm  | R522    | 119-4731-15 | 1/10W 47k ohm   |
| D772    | 001-0347-25 | MA4047LTA        | R124    | 119-2221-15 | 1/10W 2.2k ohm  | R527    | 119-4721-15 | 1/10W 4.7k ohm  |
| D801    | 001-0592-00 | RM4Z             | R125    | 119-1021-15 | 1/10W 1k ohm    | R528    | 032-0140-66 | 1/10W 220 ohm F |
| D851    | 001-4301-68 | HZU18B1          | R127    | 119-5631-15 | 1/10W 56k ohm   | R529    | 119-1031-15 | 1/10W 10k ohm   |
| IC121   | 051-6201-90 | LC72146M         | R128    | 119-4731-15 | 1/10W 47k ohm   | R530    | 119-1041-15 | 1/10W 100k ohm  |
| IC241   | 051-3367-90 | NJU7780U1-33-TE2 | R130    | 119-2221-15 | 1/10W 2.2k ohm  | R531    | 119-1031-15 | 1/10W 10k ohm   |
| IC272   | 051-3334-00 | NJM2396F0        | R131    | 119-1031-15 | 1/10W 10k ohm   | R532    | 119-4721-15 | 1/10W 4.7k ohm  |
| IC301   | 051-5042-91 | CL7639V11        | R132    | 119-1031-15 | 1/10W 10k ohm   | R533    | 119-4721-15 | 1/10W 4.7k ohm  |
| IC351   | 051-3034-90 | NJM4558V         | R133    | 119-2221-15 | 1/10W 2.2k ohm  | R534    | 119-1021-15 | 1/10W 1k ohm    |
| IC391   | 051-2040-00 | TA8276H          | R134    | 119-2221-15 | 1/10W 2.2k ohm  | R535    | 119-1031-15 | 1/10W 10k ohm   |
| IC501   | 052-3196-21 | M30622MGP-E22GP  | R135    | 119-1031-15 | 1/10W 10k ohm   | R536    | 119-2221-15 | 1/10W 2.2k ohm  |
| IC502   | 051-0869-58 | NJM2103M         | R242    | 119-4731-15 | 1/10W 47k ohm   | R537    | 119-1031-15 | 1/10W 10k ohm   |
| IC503   | 051-9400-29 | BR93L46F-W       | R243    | 119-1021-15 | 1/10W 1k ohm    | R538    | 119-1031-15 | 1/10W 10k ohm   |
| IC504   | 051-6600-58 | HA12187FP        | R245    | 119-3331-15 | 1/10W 33k ohm   | R539    | 119-1031-15 | 1/10W 10k ohm   |
| IC741   | 051-3369-00 | NJM2388F8        | R246    | 119-4731-15 | 1/10W 47k ohm   | R540    | 119-4731-15 | 1/10W 47k ohm   |
| J241    | 074-1237-69 | 19PIN            | R248    | 119-1041-15 | 1/10W 100k ohm  | R541    | 119-5621-15 | 1/10W 5.6k ohm  |
| J701    | 074-1194-00 | 13PIN            | R250    | 119-3331-15 | 1/10W 33k ohm   | R542    | 119-2231-15 | 1/10W 22k ohm   |
| J721    | 074-1302-08 | 8PIN             | R253    | 119-4731-15 | 1/10W 47k ohm   | R544    | 119-4731-15 | 1/10W 47k ohm   |
| J801    | 074-4007-20 | 20PIN            | R255    | 119-3331-15 | 1/10W 33k ohm   | R545    | 119-6831-15 | 1/10W 68k ohm   |
| L101    | 010-2003-04 | 30uH             | R256    | 119-0000-05 | 1/10W 0 ohm JW  | R546    | 119-1021-15 | 1/10W 1k ohm    |
| L102    | 010-6009-76 | 22uH J           | R258    | 119-4731-15 | 1/10W 47k ohm   | R547    | 119-1021-15 | 1/10W 1k ohm    |
| L103    | 010-6009-76 | 22uH J           | R271    | 119-4731-15 | 1/10W 47k ohm   | R548    | 119-1031-15 | 1/10W 10k ohm   |
| L121    | 010-6009-76 | 22uH J           | R273    | 119-0000-05 | 1/10W 0 ohm JW  | R549    | 119-3341-15 | 1/10W 330k ohm  |
| L501    | 010-6009-76 | 22uH J           | R301    | 119-1021-15 | 1/10W 1k ohm    | R550    | 032-0140-22 | 1/10W 68k ohm F |
| L502    | 010-6009-76 | 22uH J           | R302    | 119-1021-15 | 1/10W 1k ohm    | R551    | 032-0140-00 | 1/10W 56k ohm F |
| L801    | 010-8026-00 | 210uH            | R305    | 119-1021-15 | 1/10W 1k ohm    | R552    | 117-6821-15 | 1/8W 6.8k ohm   |
| P501    | 076-0662-74 | 24P              | R306    | 119-1021-15 | 1/10W 1k ohm    | R553    | 119-4731-15 | 1/10W 47k ohm   |
| P503    | 076-0717-09 | 9P               | R309    | 119-1021-15 | 1/10W 1k ohm    | R554    | 119-4731-15 | 1/10W 47k ohm   |
| Q121    | 190-1298-00 | 2SA1298          | R310    | 119-1021-15 | 1/10W 1k ohm    | R555    | 119-5621-15 | 1/10W 5.6k ohm  |
| Q122    | 190-1298-00 | 2SA1298          | R311    | 119-5631-15 | 1/10W 56k ohm   | R556    | 119-1021-15 | 1/10W 1k ohm    |
| Q123    | 190-1298-00 | 2SA1298          | R312    | 119-5631-15 | 1/10W 56k ohm   | R557    | 119-2231-15 | 1/10W 22k ohm   |
| Q241    | 125-0021-91 | DTA114EUA        | R313    | 119-5631-15 | 1/10W 56k ohm   | R558    | 119-2231-15 | 1/10W 22k ohm   |
| Q242    | 125-2027-91 | DTC114EUA        | R314    | 119-5631-15 | 1/10W 56k ohm   | R559    | 119-1021-15 | 1/10W 1k ohm    |
| Q243    | 193-0601-00 | 2SD601A          | R319    | 119-1031-15 | 1/10W 10k ohm   | R560    | 119-1021-15 | 1/10W 1k ohm    |
| Q244    | 192-4116-00 | 2SC4116          | R320    | 119-1221-15 | 1/10W 1.2k ohm  | R561    | 119-1021-15 | 1/10W 1k ohm    |
| Q245    | 125-2027-91 | DTC114EUA        | R321    | 119-1031-15 | 1/10W 10k ohm   | R562    | 119-1021-15 | 1/10W 1k ohm    |
| Q246    | 125-0021-91 | DTA114EUA        | R322    | 119-1221-15 | 1/10W 1.2k ohm  | R563    | 119-0000-05 | 1/10W 0 ohm JW  |
| Q247    | 125-2027-91 | DTC114EUA        | R323    | 119-0000-05 | 1/10W 0 ohm JW  | R564    | 119-1021-15 | 1/10W 1k ohm    |
| Q248    | 198-3018-00 | 2SK3018          | R324    | 119-0000-05 | 1/10W 0 ohm JW  | R566    | 119-1021-15 | 1/10W 1k ohm    |
| Q249    | 198-3018-00 | 2SK3018          | R325    | 119-0000-05 | 1/10W 0 ohm JW  | R568    | 119-4731-15 | 1/10W 47k ohm   |
| Q391    | 125-2027-91 | DTC114EUA        | R326    | 119-0000-05 | 1/10W 0 ohm JW  | R569    | 119-4731-15 | 1/10W 47k ohm   |
| Q392    | 192-4116-00 | 2SC4116          | R351    | 119-8211-15 | 1/10W 820 ohm   | R572    | 119-4731-15 | 1/10W 47k ohm   |
| Q502    | 190-1736-00 | 2SA1736          | R352    | 119-1021-15 | 1/10W 1k ohm    | R573    | 119-4731-15 | 1/10W 47k ohm   |
| Q503    | 192-4116-00 | 2SC4116          | R353    | 032-0140-50 | 1/10W 10k ohm F | R701    | 116-1211-15 | 1/4W 120 ohm    |
| Q504    | 192-4116-00 | 2SC4116          | R354    | 032-0140-50 | 1/10W 10k ohm F | R702    | 116-6801-15 | 1/4W 68 ohm     |
| Q505    | 192-4116-00 | 2SC4116          | R355    | 032-0140-50 | 1/10W 10k ohm F | R703    | 119-2231-15 | 1/10W 22k ohm   |
| Q506    | 193-2118-50 | 2SD2118F5 R,S    | R356    | 032-0140-50 | 1/10W 10k ohm F | R704    | 119-2231-15 | 1/10W 22k ohm   |
| Q701    | 192-4116-00 | 2SC4116          | R357    | 032-0140-50 | 1/10W 10k ohm F | R711    | 116-2221-15 | 1/4W 2.2k ohm   |
| Q711    | 190-1736-00 | 2SA1736          | R358    | 032-0140-50 | 1/10W 10k ohm F | R712    | 117-1031-15 | 1/8W 10k ohm    |
| Q712    | 192-4116-00 | 2SC4116          | R359    | 032-0140-50 | 1/10W 10k ohm F | R713    | 116-2221-15 | 1/4W 2.2k ohm   |
| Q761    | 193-1664-00 | 2SD1664 P,Q,R    | R360    | 032-0140-50 | 1/10W 10k ohm F | R714    | 119-1031-15 | 1/10W 10k ohm   |
| Q762    | 125-0021-91 | DTA114EUA        | R391    | 119-5631-15 | 1/10W 56k ohm   | R715    | 119-3321-15 | 1/10W 3.3k ohm  |
| Q763    | 125-2027-91 | DTC114EUA        | R392    | 119-1221-15 | 1/10W 1.2k ohm  | R726    | 119-1021-15 | 1/10W 1k ohm    |
| Q771    | 193-2118-00 | 2SD2118F5 Q,R,S  | R393    | 119-2221-15 | 1/10W 2.2k ohm  | R731    | 116-5621-15 | 1/4W 5.6k ohm   |
| Q773    | 192-4116-00 | 2SC4116          | R394    | 119-2221-15 | 1/10W 2.2k ohm  | R732    | 116-4721-15 | 1/4W 4.7k ohm   |
| Q775    | 192-4116-00 | 2SC4116          | R395    | 119-2221-15 | 1/10W 2.2k ohm  | R761    | 032-0092-56 | 1/8W 22k ohm F  |
| Q776    | 125-0021-91 | DTA114EUA        | R396    | 119-2221-15 | 1/10W 2.2k ohm  | R762    | 119-1541-15 | 1/10W 150k ohm  |
| Q777    | 125-2027-91 | DTC114EUA        | R397    | 119-1031-15 | 1/10W 10k ohm   | R763    | 032-0092-51 | 1/8W 1k ohm F   |
| Q791    | 192-4116-00 | 2SC4116          | R398    | 119-4731-15 | 1/10W 47k ohm   | R764    | 119-1221-15 | 1/10W 1.2k ohm  |
| Q792    | 192-4116-00 | 2SC4116          | R399    | 119-4731-15 | 1/10W 47k ohm   | R772    | 119-2231-15 | 1/10W 22k ohm   |
| Q821    | 190-1736-00 | 2SA1736          | R400    | 119-1031-15 | 1/10W 10k ohm   | R773    | 116-1021-15 | 1/4W 1k ohm     |
| Q822    | 192-4116-00 | 2SC4116          | R502    | 119-4721-15 | 1/10W 4.7k ohm  | R774    | 119-2231-15 | 1/10W 22k ohm   |



| REF No. | PART No.    | DESCRIPTION    | REF No. | PART No.    | DESCRIPTION    | REF No. | PART No.    | DESCRIPTION            |
|---------|-------------|----------------|---------|-------------|----------------|---------|-------------|------------------------|
| R779    | 116-1821-15 | 1/4W 1.8k ohm  | R821    | 116-1031-15 | 1/4W 10k ohm   | TM502   | 073-0762-90 | TERMINAL               |
| R780    | 117-1821-15 | 1/8W 1.8k ohm  | R822    | 119-1031-15 | 1/10W 10k ohm  | TM801   | 073-0762-90 | TERMINAL               |
| R781    | 119-0000-05 | 1/10W 0 ohm JW | R823    | 119-1031-15 | 1/10W 10k ohm  | TM802   | 073-0762-90 | TERMINAL               |
| R791    | 119-0000-05 | 1/10W 0 ohm JW | R824    | 116-2221-15 | 1/4W 2.2k ohm  | X121    | 061-1066-00 | CRYSTAL 7.2MHZ         |
| R792    | 116-4721-15 | 1/4W 4.7k ohm  | R825    | 116-2221-15 | 1/4W 2.2k ohm  | X501    | 060-1533-90 | CSTCE10M0G52-RO        |
| R794    | 119-1831-15 | 1/10W 18k ohm  | R904    | 119-0000-05 | 1/10W 0 ohm JW | PWB     | 039-2765-02 | PWB(WITHOUT COMPONENT) |
| R795    | 119-4721-15 | 1/10W 4.7k ohm | SUP101  | 060-0122-20 | DSP-141N-S00B  |         |             |                        |
| R796    | 116-5611-15 | 1/4W 560 ohm   | TH711   | 002-0318-01 | 1206L035YRT    |         |             |                        |
| R801    | 119-0000-05 | 1/10W 0 ohm JW | TM101   | 073-0762-90 | TERMINAL       |         |             |                        |
| R802    | 119-0000-05 | 1/10W 0 ohm JW | TM501   | 073-0762-90 | TERMINAL       |         |             |                        |

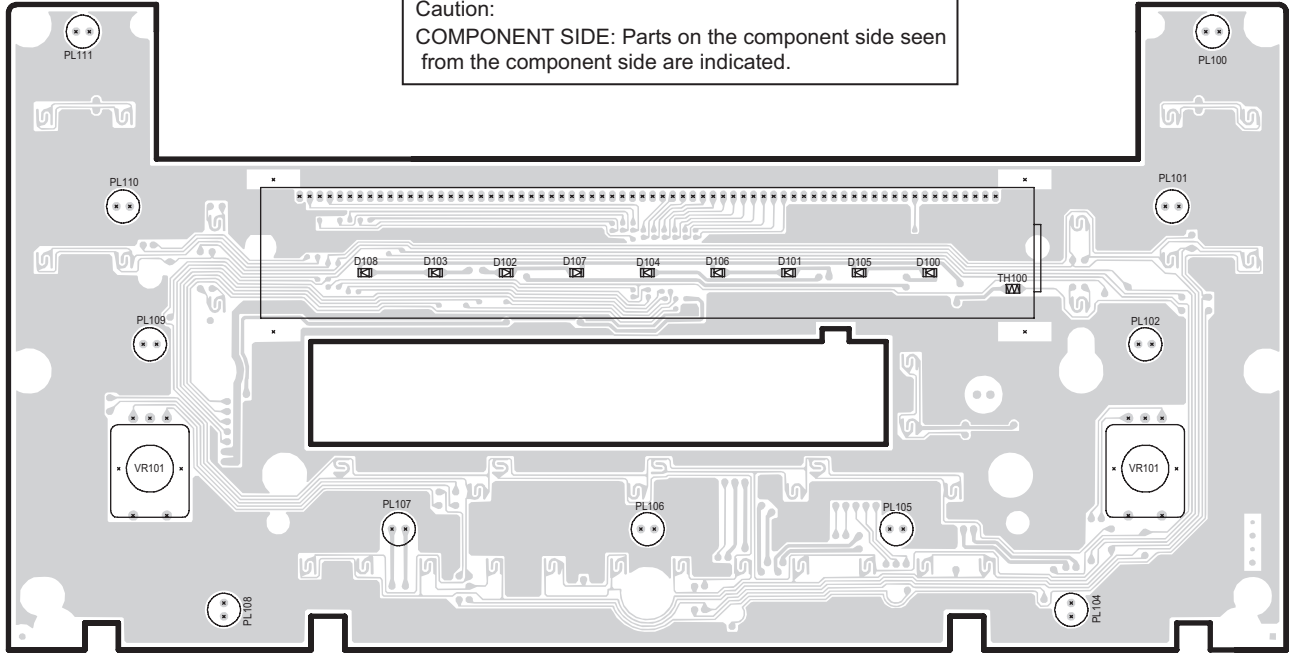
# PRINTED WIRING BOARD

SW PWB(B1) section

# DRAFT

## COMPONENT SIDE

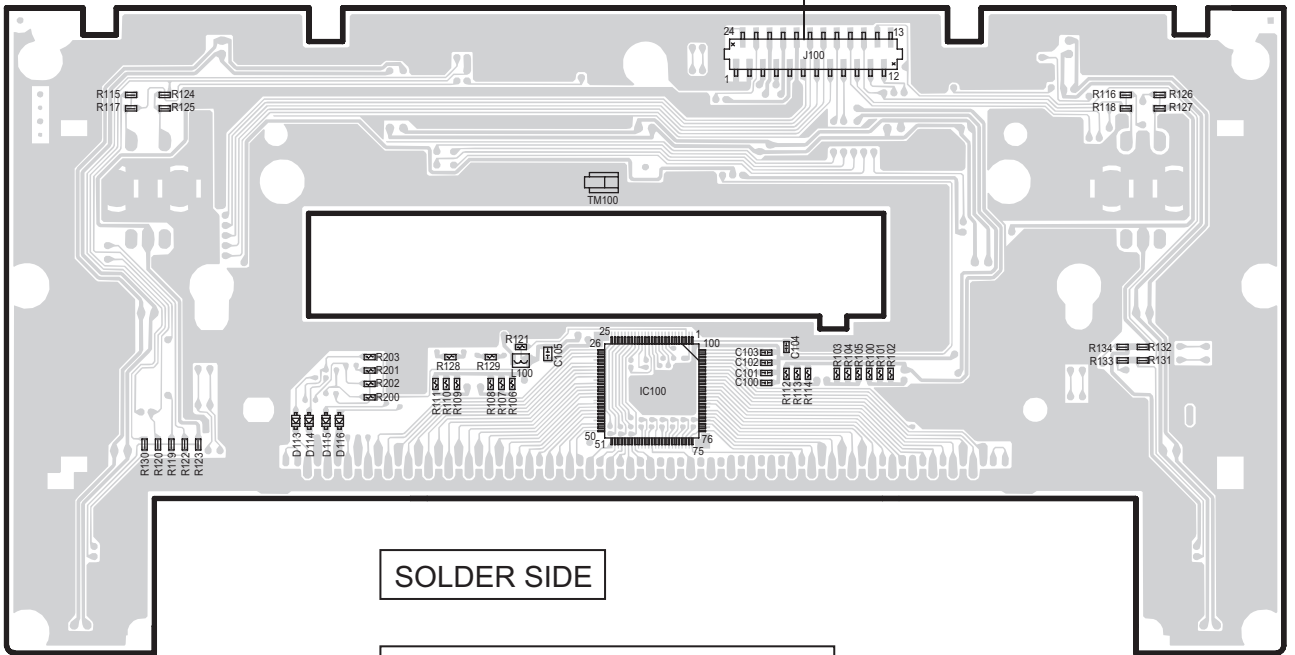
Caution:  
COMPONENT SIDE: Parts on the component side seen from the component side are indicated.



To P501 of Main PWB(B1)

## SOLDER SIDE

Caution:  
SOLDER SIDE: Parts on the solder side seen from the solder side are indicated.



# PRINTED WIRING BOARD

Main PWB(B2) section

13P (Ce-NET)

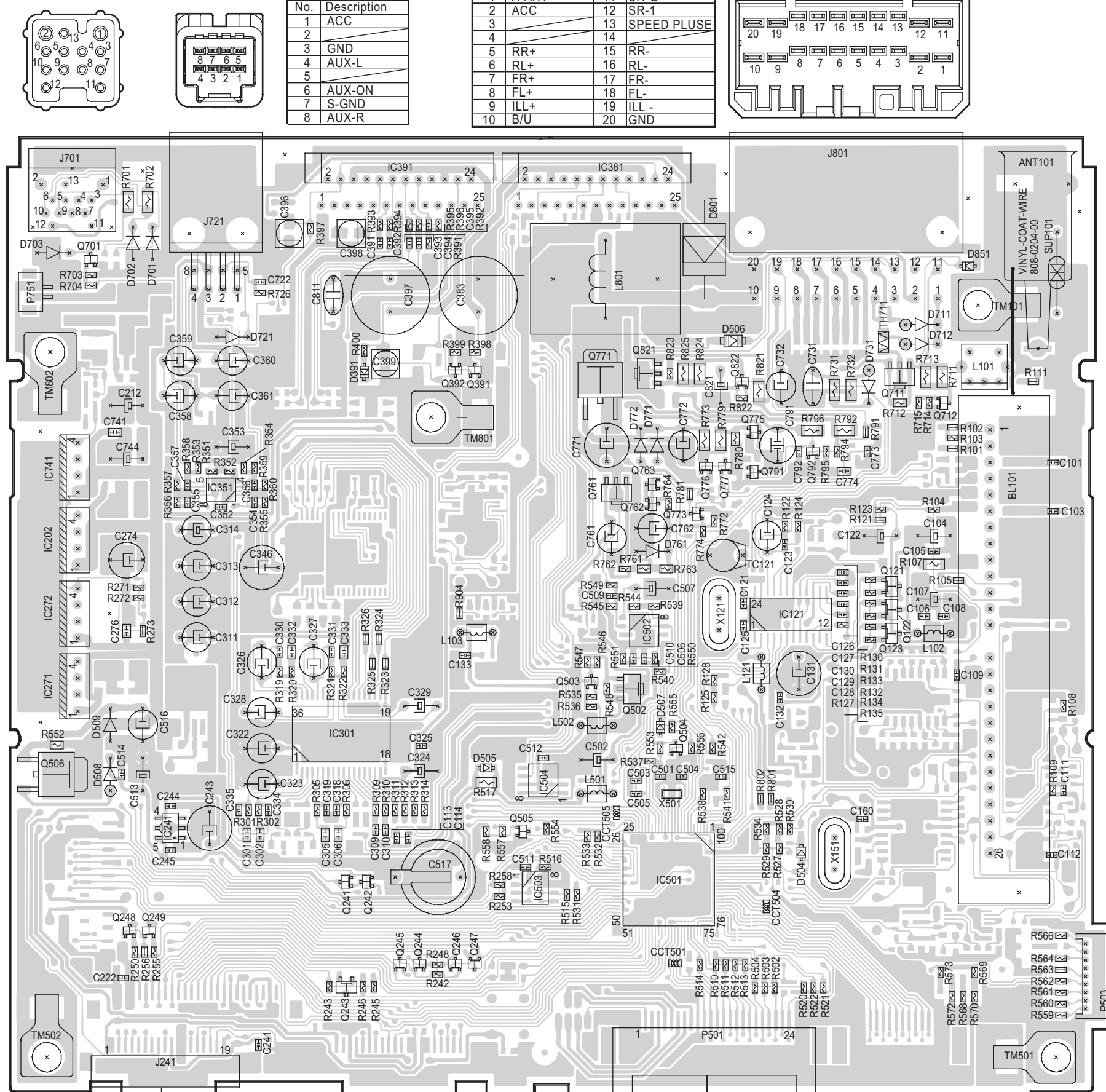
| No. | Description | No. | Description |
|-----|-------------|-----|-------------|
| 1   | GND         | 8   | R-ch(-)     |
| 2   | B/U +14V    | 9   | SYS-ACC     |
| 3   | L-ch(+)     | 10  | BUS(-)      |
| 4   |             | 11  | L-ch(-)     |
| 5   |             | 12  | ILL +14V    |
| 6   | BUS(+)      | 13  |             |
| 7   | R-ch(+)     |     |             |

J721

| No. | Description |
|-----|-------------|
| 1   | ACC         |
| 2   |             |
| 3   | GND         |
| 4   | AUX-L       |
| 5   |             |
| 6   | AUX-ON      |
| 7   | S-GND       |
| 8   | AUX-R       |

J801

| No. | Description | No. | Description |
|-----|-------------|-----|-------------|
| 1   | A-ANT       | 11  | SR-G        |
| 2   | ACC         | 12  | SR-1        |
| 3   |             | 13  | SPEED PLUSE |
| 4   |             | 14  |             |
| 5   | RR+         | 15  | RR-         |
| 6   | RL+         | 16  | RL-         |
| 7   | FR+         | 17  | FR-         |
| 8   | FL+         | 18  | FL-         |
| 9   | ILL+        | 19  | ILL -       |
| 10  | B/U         | 20  | GND         |



| IC    | Q                 |
|-------|-------------------|
| IC381 | IC391             |
|       | Q701              |
|       | Q721              |
|       | Q751              |
|       | Q391 Q392 Q752    |
|       | Q711Q771 Q821Q822 |
|       | Q712              |
|       | Q775              |
|       | Q774 Q792Q791     |
|       | Q156 Q777 Q776    |
|       | Q157 Q763         |
|       | Q772 Q761         |
| IC351 | IC741             |
| IC371 | Q762              |
|       | Q773              |
| IC341 | Q155              |
| IC202 | Q121              |
| IC831 | Q122              |
| IC121 | Q123              |
| IC502 | Q503              |
| IC272 | Q502              |
| IC201 | Q504              |
| IC181 | Q506 Q158         |
| IC271 | Q152 Q153         |
| IC301 | Q505              |
| IC504 | Q151 Q159         |
| IC241 | Q242 Q241         |
| IC152 | IC151             |
| IC501 | Q248 Q249         |
| IC503 | Q154              |
| IC151 | Q244 Q245         |
|       | Q246Q247          |
|       | Q243              |

COMPONENT SIDE

Caution:  
COMPONENT SIDE: Parts on the component side seen from the component side are indicated.

To page XX  
J1 of CD PWB  
CD changer module

To J100 of Switch PWB(B2)  
To page XX

J801

| No. | Description | No. | Description |
|-----|-------------|-----|-------------|
| 1   | A-ANT       | 11  | SR-G        |
| 2   | ACC         | 12  | SR-1        |
| 3   |             | 13  | SPEED PLUSE |
| 4   |             | 14  |             |
| 5   | RR+         | 15  | RR-         |
| 6   | RL+         | 16  | RL-         |
| 7   | FR+         | 17  | FR-         |
| 8   | FL+         | 18  | FL-         |
| 9   | ILL+        | 19  | ILL -       |
| 10  | B/U         | 20  | GND         |

J721

| No. | Description |
|-----|-------------|
| 1   | ACC         |
| 2   |             |
| 3   | GND         |
| 4   | AUX-L       |
| 5   |             |
| 6   | AUX-ON      |
| 7   | S-GND       |
| 8   | AUX-R       |

13P (Ce-NET)

| No. | Description | No. | Description |
|-----|-------------|-----|-------------|
| 1   | GND         | 8   | R-ch(-)     |
| 2   | B/U +14V    | 9   | SYS-ACC     |
| 3   | L-ch(+)     | 10  | BUS(-)      |
| 4   |             | 11  | L-ch(-)     |
| 5   |             | 12  | ILL +14V    |
| 6   | BUS(+)      | 13  |             |
| 7   | R-ch(+)     |     |             |

SOLDER SIDE

Caution:  
SOLDER SIDE: Parts on the solder side seen from the solder side are indicated.

