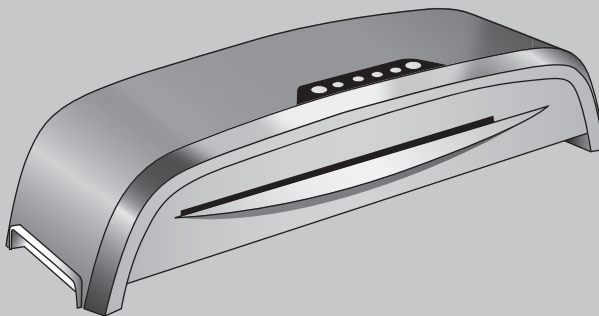


Fellowes

Office Laminator

Neptune™ 125



E Please read these instructions before use.

F Lire ces instructions avant utilisation.

S Lea estas instrucciones antes del usarlo.

fellowes.com



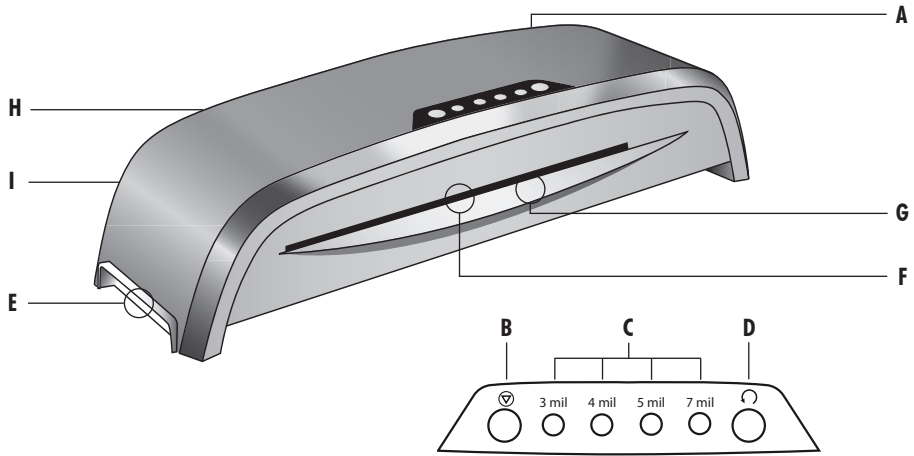
INDEX

LAMINATOR CONTROLS / QUICK START GUIDE	3
ENGLISH	4-7
FRANCAIS	8-11
ESPAÑOL	12-15

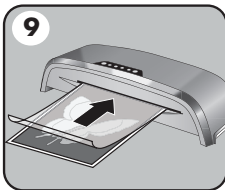
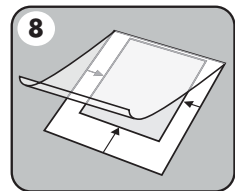
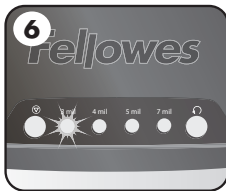
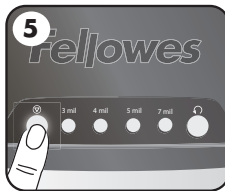
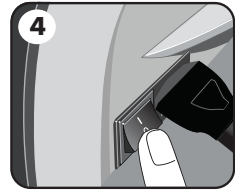
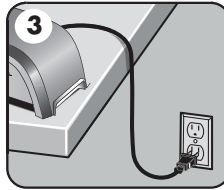
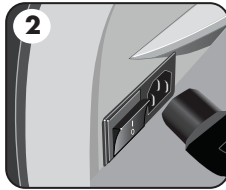
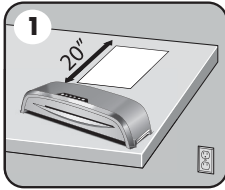




LAMINATOR CONTROLS



QUICK START GUIDE



ENGLISH E

CAPABILITIES

Performance

Entry width	12.5" / 317mm
Min pouch thickness	3 Mil. (per side)
Max pouch thickness	7 Mil. (per side)
Estimated heat-up time	4 minutes
Cool down time	30-60 minutes
Lamination speed	approx. 20"/min (fixed speed)
Number of rollers	4
Ready indication	Light & beep
Reverse function	Yes
Clear Path / Anti-jam engine	Yes
LED interface	Yes
Power Save / Auto shut-off	Yes (60 mins)
Photo-capable	Yes

Carrier-free	Yes
--------------	-----

Carry handles	Yes
---------------	-----

Technical Data

Voltage / Frequency / Current(Amps)	110-120V AC; 60Hz; 5A
-------------------------------------	-----------------------

Wattage	550 Watts
---------	-----------

Dimensions (HxWxD)	4.9" x 22" x 9"
--------------------	-----------------

Net weight	14.3lbs / 6.5 kg
------------	------------------

Laminating capacity (max document thickness)	0.03"
----------------------------------------------	-------

IMPORTANT SAFETY INSTRUCTIONS



CAUTION: Please read before use and keep for future reference.

When laminating;

- plug the machine into an easily accessible socket.

- to prevent electrical shock - do not use the appliance close to water, do not spill water on the appliance, power cord or wall socket.

DO ensure the machine is on a stable surface.

DO test laminate scrap sheets and set the machine before final laminations.

DO remove staples and other metal articles prior to laminating.

DO keep the machine away from heat and water sources.

DO turn off the machine after each use.

DO unplug the machine when not in use for an extended period.

DO use pouches designed for use at the appropriate settings.

DO keep away from pets, while in use.

DO NOT leave the power cord in contact with hot surfaces.

DO NOT leave power cord hanging from cupboards or shelves.

DO NOT use appliance if the power cord is damaged.

DO NOT attempt to open or otherwise repair the machine.

DO NOT exceed the machines quoted performance.

DO NOT allow minors to use this machine.

DO NOT laminate sharp or metal objects (eg: staples, paper clips).



DO NOT laminate heat-sensitive documents (eg: tickets, ultrasounds etc).

DO NOT laminate with self-adhesive pouches (which require a cold setting).

DO NOT laminate an empty pouch.



LAMINATOR CONTROLS

A	On/off switch	F	Pouch / document entry slot
B	Standby button & LED 	G	Entry support shelf
C	Pouch selection buttons (3, 4, 5, 7 Mil.)	H	Pouch / document exit
D	Reverse button & LED 	I	Cooling system vents
E	Carry handles		

FEATURES & TIPS



'System-Check' function

When switched on, the machine performs a 'System-Check' function. The control panel lights quickly flash in sequence to check their operation.



'Safe Start' function

When switched on, the machine has a default 'Safe Start' function which starts to warm-up at the 3 Mil. setting. You may select other temperature settings as required.



'Reverse' function

To eject the laminating pouch during use, press and hold down the reverse button until the pouch has ejected from the machine.



'Power Save' function

If the machine is not active for 60 minutes, the 'Power Save' function will place the machine into standby mode. To operate the machine, press the 'standby' button.

- Always put the item to be laminated into the appropriate sized pouch.
- This machine does not need a carrier to laminate.
- Always test laminate with a similar size and thickness before final process.
- If required, trim excess material from around the item after lamination and cooling.
- For best results, use Fellowes® brand laminating pouches: Enhance 3 Mil, Capture 5 Mil, Protect 7 Mil.
- When working with different pouch thickness' (temperature settings) it is recommended to start first with the thinnest pouches.

SETTING UP THE LAMINATOR

1. Ensure the machine is on a stable surface. Check that there is enough clear space behind the machine to allow items to pass through freely.
2. Connect the supplied power cord to the machine.
3. Plug the machine in to an easily accessible main socket.





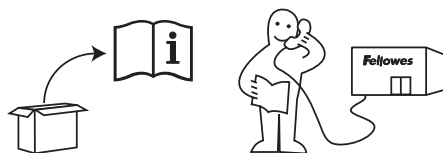
HOW TO LAMINATE

4. Switch the power on.
5. Turn the machine 'On' using the 'standby' button.
6. The default setting is 3 Mil. thickness, if laminating different thickness pouches choose between 4, 5 or 7 Mil. pouch thickness as required. The selected button will flash red during warm-up or cool-down periods.
7. When the selected temperature is reached, the flashing light will change from flashing red to solid green color and a signal will sound.
8. Place the document into the open pouch. Ensure the document is centered against the sealed edge. Use the appropriate pouch size for the document.
9. Ensure the pouch enters the machine sealed edge first. Keep the pouch straight and centered within the slot, not on an angle. Use the entry markings as a guide.
10. Upon exit, the laminated pouch is hot and soft. To prevent jamming remove the pouch immediately. Place pouch on to a flat surface to cool.
11. To eject a pouch, press and hold down the reverse button until the pouch is ejected from the front of the machine. The Standby button will flash and the alert will sound.

NEED HELP?

Let our experts help you with a solution. You'll find the numbers for your nearest service center on the back cover of this manual.

Customer Service: www.fellowes.com



WORLDWIDE WARRANTY

Fellowes warrants all parts of the laminator to be free of defects in material and workmanship for 2 years from the date of purchase by the original consumer. If any part is found to be defective during warranty period, your sole and exclusive remedy will be repair or replacement, at Fellowes' option and expense, of the defective part. This warranty does not apply in cases of abuse, mishandling or unauthorized repair. Any implied warranty, including that of merchantability or fitness for particular purpose, is hereby limited in duration to the appropriate warranty period set forth above. In no event shall Fellowes be liable for any consequential or incidental damages attributable to this product. This warranty gives you specific legal rights. You may have other legal rights that vary from this warranty. The duration, terms and conditions of this warranty are valid worldwide, except where different limitations, restrictions or conditions may be required by local law. For more details or to obtain services under this warranty, please contact Fellowes or your dealer.

PRODUCT REGISTRATION

Thank you for purchasing a Fellowes product. Please visit www.fellowes.com/register to register your product and benefit from product news, feedback and offers. Product details can be found listed on the rating plate positioned on the rear side or underside of the machine.





TROUBLESHOOTING

Problem	Possible cause	Solution
No 'red' power on LED	Machine is not switched on	Switch on machine at rear next to plug inlet and at the wall socket
Ready light does not come on after a long period	Machine is in a hot or humid area	Move the machine to a cooler and dry area
Pouch does not completely seal the item	Item may be too thick to laminate	Pass through the machine again
	Temperature setting may be incorrect	Check pouch thickness is correctly selected and pass through again
Pouch has waves or bubbles	Temperature setting may be incorrect	Check pouch thickness is correctly selected and pass through again
Pouch is lost in the machine	Pouch is jammed	Select reverse button and pull out the item by hand
Jamming	Pouch was used 'open end' first	
	Pouch was not centered on entry	
	Pouch was not straight upon entry	
	Empty pouch was used	
Pouch is damaged after lamination	Damaged rollers or adhesive on rollers	Pass cleaning sheet (Fellowes #5320603) through the machine to test and clean rollers

STORAGE & CLEANING

Switch off the machine at the wall. Allow the machine to cool.

The outside of the machine can be cleaned with a damp cloth. Do not use solvents or flammable materials to polish the machine.

Cleaning sheets can be used with the machine. When the machine is warm – run the sheets through the machine to clean any residue off the rollers.

For optimum performance, it is recommended that cleaning sheets (Fellowes #5320603) are used with the machine regularly.





Useful Phone Numbers

FCC CLASS B NOTICE

Note: This equipment has been tested and found to comply with the limits for a Class B digital device, pursuant to part 15 of the FCC Rules. These limits are designed to provide reasonable protection against harmful interference in a residential installation. This equipment generates, uses and can radiate radio frequency energy and, if not installed and used in accordance with the instructions, may cause harmful interference to radio communications. However, there is no guarantee that interference will not occur in a particular installation. If this equipment does cause harmful interference to radio or television reception, which can be determined by turning the equipment off and on, the user is encouraged to try to correct the interference by one or more of the following measures:

- Reorient or relocate the receiving antenna.
- Increase the separation between the equipment and receiver.
- Connect the equipment into an outlet on a circuit different from that to which the receiver is connected.
- Consult the dealer or an experienced radio/TV technician for help.

CANADA CLASS B NOTICE - AVIS CANADA, CLASSE B

This Class B digital apparatus complies with Canadian ICES-003.

Cet appareil numérique de la classe B est conforme à la norme NMB-003 du Canada.

MODIFICATIONS

Any modifications made to this device that are not approved by Fellowes may void the authority granted to the user by the FCC and/or by Industry Canada to operate this equipment.

Toutes modifications apportées à ce dispositif et non approuvées par Fellowes annuleront le droit accordé à l'utilisateur par le FCC et/ou par Industrie Canada de faire fonctionner cet équipement.

Fellowes

Australia	+61-3-8336-9700
Benelux	+31-(0)-76-523-2090
Canada	+1-905-475-6320
Deutschland	+49-(0)-5131-49770
España / Portugal	+ 34 902 33 55 69
France	+33-(0)-1-78-64-91-00
Italia	+39-71-730041

Japan	+81-(0)-3-5496-2401
Korea	+82-(0)-2-3462-2844
Malaysia	+60-(0)-35122-1231
Polska	+48-(22)-771-47-40
Russia	+7-(495)-228-14-03
Singapore	+65-6221-3811
United Kingdom	+44-(0)-1302-836836
United States	+1-630-893-1600



1789 Norwood Avenue, Itasca, Illinois 60143-1095 • USA • 630-893-1600

fellowes.com

Australia	Canada	Deutschland	France	Japan	Polska	United Kingdom
Benelux	China	España	Italia	Korea	Singapore	United States

© 2009 Fellowes, Inc. Part No. 403843-2