



INSTRUCTIONS

-J04656

REV. 2011-12-12

CHROME REAR SADDLEBAG GUARD KIT

GENERAL

Kit Number

49282-09B

Models

For model fitment information, see the P&A Retail Catalog or the Parts and Accessories section of www.harley-davidson.com (English only).

Additional Parts Required

WARNING

The rider's safety depends upon the correct installation of this kit. Use the appropriate service manual procedures. If the procedure is not within your capabilities or you do not have the correct tools, have a Harley-Davidson dealer perform the installation. Improper installation of this kit could result in death or serious injury. (00333a)

NOTE

This instruction sheet references service manual information. A service manual for your model motorcycle is required for this installation and is available from a Harley-Davidson dealer.

Kit Contents

See Figure 3 and Table 1.

REMOVAL

1. Remove saddlebags from motorcycle following the instructions in the service manual.
2. See Figure 3. Remove grab strap screw and washer (G). Remove grab strap (H). Remove seat following the instructions in the service manual.
3. If equipped, remove seat bumper (O) and screw (N).
4. Remove left and right side covers (located in front of saddlebags) by removing screw from bottom of side cover. Save hardware and side covers for final assembly.
5. Support muffler assembly with a block of wood or other suitable method.
6. See Figure 3. Remove the screws (F) securing saddlebag support to muffler supports.
7. Remove bolt (J) and nut (M). Save bolt (J) for installation. Discard nut (M).
8. Remove screws (B, K and C) and nut (E). Save screws (B and C) for installation. Discard nut (E) and screw (K).
9. Remove stud receptacle (I) and save for installation.

10. See Figure 1. Remove antenna bracket (1), mounting fasteners (2), antenna mounting nut (5), washer (4) and antenna adapter (3). Save the antenna and hardware, discard the bracket.
11. Remove support (D) and discard.
12. Repeat Steps 1 through 9 for other side.

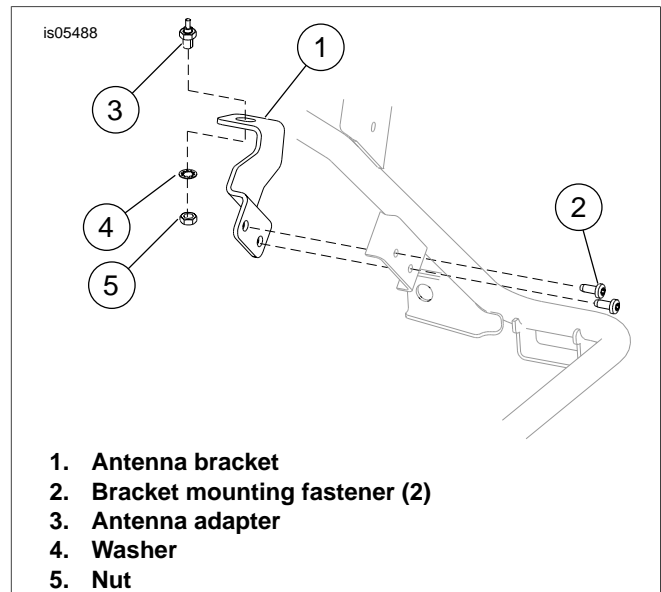


Figure 1. Remove Antenna and Bracket

INSTALLATION

1. See Figure 3. Install the rear saddlebag support mounting screw (B) through the air suspension bracket (A) and saddlebag support (7). Install screw finger-tight.
2. Install bolt (J) and nut (10). Tighten finger-tight.
3. Install stud receptacle (I) into saddlebag support (7).
4. See Figure 2. Install antenna bracket with hardware (removed earlier).
5. Install new forward saddlebag guard (1 or 2) onto saddlebag support (7).
6. Install screw (4) and nut (3). Tighten finger-tight.
7. Secure forward saddlebag guard with upper bolt (5) and lower bolt (C) with nut (6). Tighten finger-tight.
8. Tighten the forward guard upper screw (5) to 32-36 ft-lbs (43-49 Nm).
9. Tighten the lower screw (C) and nut (6) to 32-36 ft-lbs (43-49 Nm).

10. Tighten saddlebag support screw (4) and nut (3) to 70-100 **in-lbs** (8-11 Nm).
11. Tighten the rear saddlebag support mounting screw (B) to 15-20 ft-lbs (20-27 Nm).
12. Tighten fender bracket screw (J) and nut (10) to 15-20 ft-lbs (20-27 Nm).
13. Install muffler with screws (F) and remove wooden support. Tighten screws to 96-144 **in-lbs** (10.8-16.3 Nm).
14. Repeat all steps for opposite side of vehicle.
15. Install seat and grab strap (H). Tighten grab strap screw (G) to 12-15 ft-lbs (16.3-20.3 Nm).
16. Install left and right side covers with original hardware.
17. Install saddlebags with the original hardware following the instructions in the service manual.

⚠ WARNING

The front and/or rear guard(s) can provide limited leg and cosmetic vehicle protection under unique circumstances. (Fall over while stopped, very slow speed slide.) It is not made or intended to provide protection from bodily injury in a collision with another vehicle or any other object. (00022a)

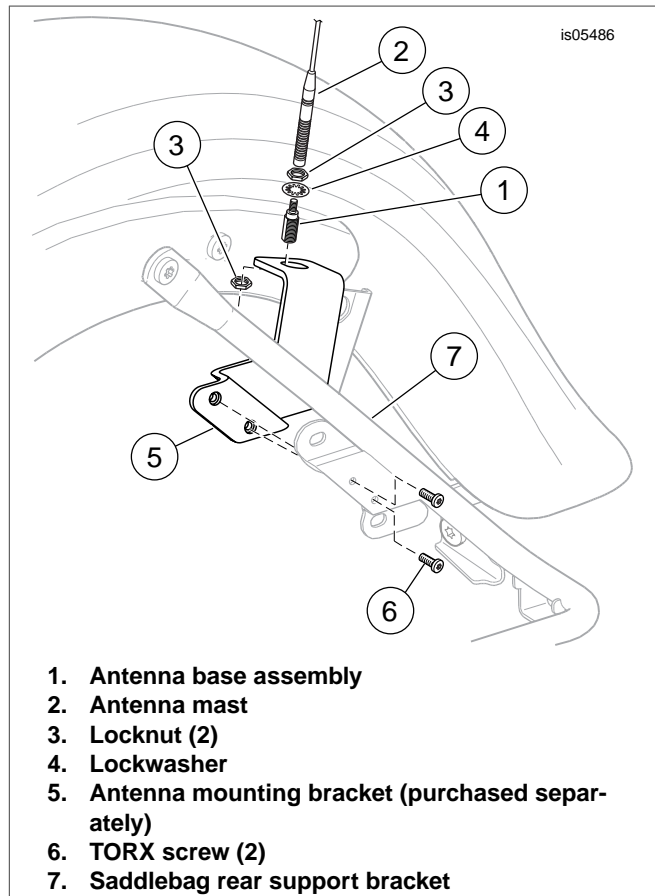


Figure 2. Antenna Mounting Bracket

SERVICE PARTS

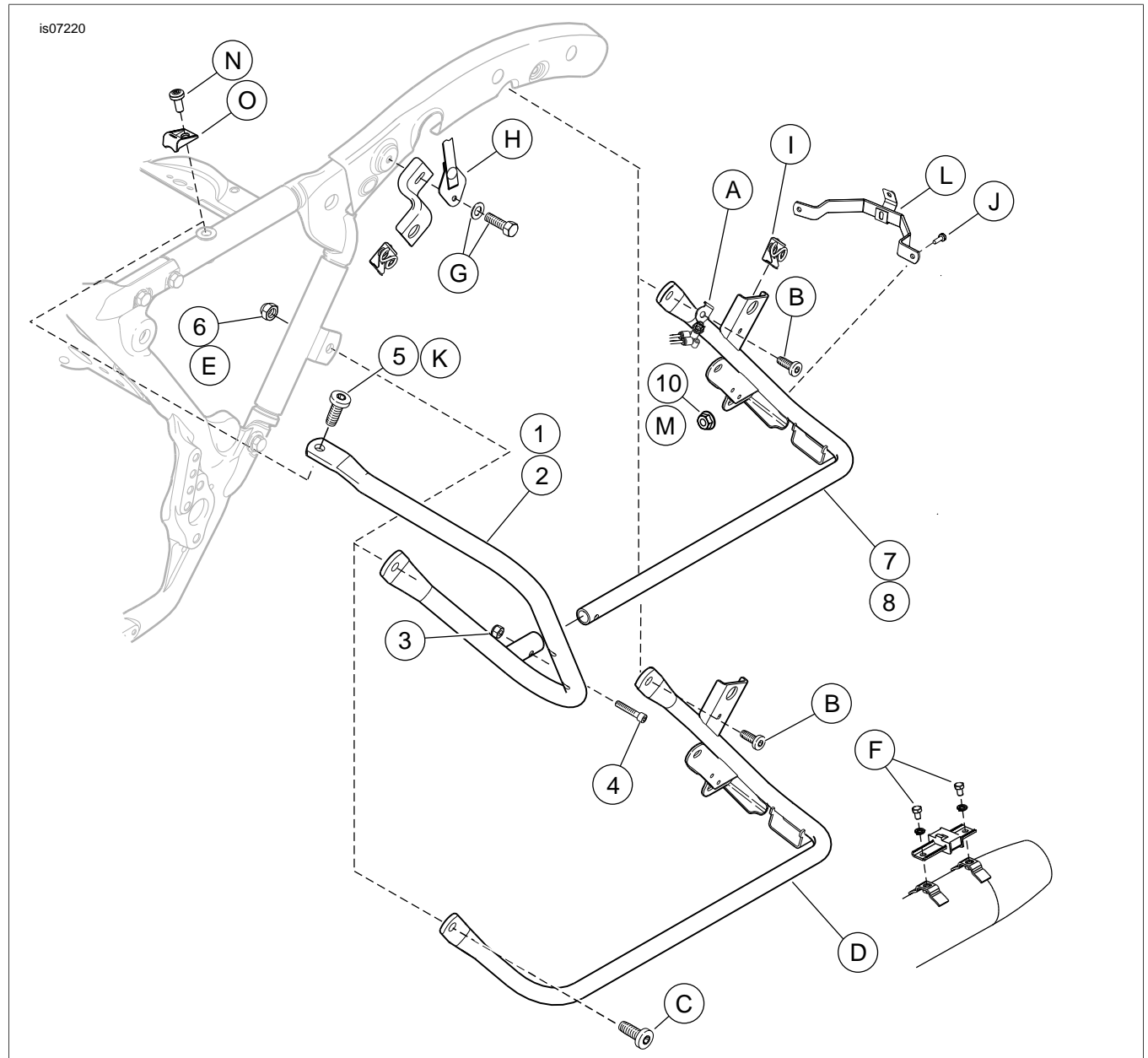


Figure 3. Service Parts: Saddlebag Guard Kit (Left Side Shown)

Table 1. Service Parts Table

Item	Description (Quantity)	Part Number
1	Forward guard, right	49176-09
2	Forward guard, left	49187-09
3	Locknut, 1/4-20	7686
4	Screw, 1/4-20	3601
5	Screw, TORX	4924
6	Locknut, 3/8-16	7601
7	Saddlebag support, left	49194-09
8	Saddlebag support, right	90781-09
9	Antenna bracket (not shown)	76516-09
10	Nut	7531

Table 1. Service Parts Table

Item	Description (Quantity)	Part Number
Items mentioned in text, but not included in kit:		
A	Air suspension mounting bracket	
B	Rear saddlebag support mounting screw	
C	Lower saddlebag guard screw	
D	Saddlebag support	
E	Lower saddlebag guard nut	
F	Muffler screw (2)	
G	Grab strap mounting hardware	
H	Grab strap	
I	Stud receptacle	
J	Stock screw	
K	Stock screw	
L	Stock fender bracket	
M	Nut	
N	Screw (2)	
O	Seat bumper (2)	