



Applies To: **2006 Ridgeline** – From VIN 2HJYK1...6H500001 thru 2HJYK1...6H521114
2007 Ridgeline – From VIN 2HJYK1...7H500001 thru 2HJYK1...7H550722

April 15, 2008

Diagnosing and Repairing Water Leaks

(Supersedes 07-082, dated November 28, 2007, to update the information marked by the black bars)
 (Replaces 05-045, *Water Leak at Right Front Floor*, dated November 17, 2005, and 06-016, *Water Leak Near the Right Rear Door*, dated April 11, 2006.)

SYMPTOM

There is a strong damp odor in the passenger's compartment and/or the carpet is wet.

PROBABLE CAUSE

Improperly applied seam sealer is causing one or more water leaks.

CORRECTIVE ACTION

Apply seam sealer where it is missing. **It is not necessary to cut apart the body panels.**

NOTE: Replace any carpet or insulation material that has been wet.

2006:

Repair Procedure A:

Lower cowl/A-pillar
 From VIN 2HJYK1...6H500001 thru
 2HJYK1...6H503867

Repair Procedure B:

Upper cowl/A-pillar
 From VIN 2HJYK1...6H500001 thru
 2HJYK1...6H517911

Repair Procedure C:

Lower corner of windshield/A-pillar
 From VIN 2HJYK1...6H500001 thru
 2HJYK1...6H519293

Repair Procedure D:

C-pillar
 From VIN 2HJYK1...6H500001 thru
 2HJYK1...6H551855

Repair Procedure E:

Rear roof trim grommet at C-pillar
 From VIN 2HJYK1...6H500001 thru
 2HJYK1...6H555666

Repair Procedure F:

A-pillar insulator drain hole
 From VIN 2HJYK1...6H500001 thru
 2HJYK1...6H521114

2007:

Repair Procedure G:

Under middle of rear window
 From VIN 2HJYK1...7H500001 thru
 2HJYK1...7H510756

Repair Procedure H:

Under cowl at A-pillar (gaps in sealer, or poor adhesion of sealer to painted body)
 From VIN 2HJYK1...7H500001 thru
 2HJYK1...7H550722

REQUIRED MATERIALS

NOTE: Once an Ultrapro tube is opened, the contents begins to dry. Each tube can be used to repair only one vehicle.

3M Ultrapro Urethane Seam Sealer*, requires 3M caulking gun (repairs one vehicle):
 3M P/N 051135-08360

3M Ultrapro Autobody Sealant*, requires standard caulking gun (repairs one vehicle):
 3M P/N 051135-08300

3M Brushable Seam Sealer* (repairs five vehicles):
 3M P/N 051135-08656

*Either one of the sealers or the sealant can be used to seal a seam.

3M Urethane Windshield Adhesive, use only for REPAIR PROCEDURE G (repairs one vehicle):
 3M P/N 051135-08693

PARTS INFORMATION

Replace these parts if the rear roof trim is removed:

Roof Grommet B (six required):
 P/N 91506-SJC-A01, H/C 7985096

Roof Grommet A:
 P/N 91505-SJC-A01, H/C 7985088

Cowl Top Clip (seven required):
 P/N 90602-SX0-003, H/C 4634838

C-Pillar Outer Trim Clip A (three required):
 P/N 91502-SCV-A00, H/C 7291792

WARRANTY CLAIM INFORMATION

In warranty: The normal warranty applies.

OP#	Description	FRT
8570A1	Seal the seam. Repair Procedure A.	1.0
	Seal the seam. Repair Procedure B.	1.0
8240A7	Seal the seam. Repair Procedure C.	1.0
81302B	Seal the seam. Repair Procedure D.	0.5
8420A1	Clean the grommet sealing area. Repair Procedure E.	0.5
848004	Drill a drain hole. Repair Procedure F.	0.5
8320A1	Remove, and reinstall the rear window. Repair Procedure G.	2.5
8410A9	Seal the seam. Repair Procedure H.	6.7

Failed Part: P/N 04636-SJC-A90ZZ
H/C 7924772

Defect Code: 07407

Symptom Code: 05905

Skill Level: Repair Technician

Out of warranty: Any repair performed after warranty expiration may be eligible for goodwill consideration by the District Parts and Service Manager or your Zone Office. You must request consideration, and get a decision, before starting work.

DIAGNOSIS

1. Interview the customer to get as much information as possible. Strong odors in the interior of the vehicle can be caused by a water leak. To determine where the repair is needed, listen carefully to how the customer describes the symptom.
2. Procedures A, B, and C are for repairs on the *outside front* of the vehicle. Procedures D, E, and G are for repairs on the *outside rear* of the vehicle. Procedures F and H are for repairs on the *inside front* of the vehicle.

Based on the customer's descriptions of where the dampness or odor is, and the VIN ranges shown in **CORRECTIVE ACTION**, use the appropriate information below to help determine which repair procedure to do (repair procedures are for both the driver's and the passenger's side). More than one repair may be needed.

- Remove the front inner fender, and spray water inside the fenderwell. Check the floor on the inside of the vehicle. If water enters the vehicle onto the floor, do **REPAIR PROCEDURE A** and/or **B**.

- Remove the fender as shown in the photo. Spray water on the lower left corner of the windshield. If water enters the interior of the vehicle, go to **REPAIR PROCEDURE C**. (Do not confuse this procedure with **REPAIR PROCEDURE F**.)



Remove the fender.

- Spray water on the C-pillar. If there is water on the right rear floor or the right rear seat belt is wet, do **REPAIR PROCEDURE D**.
- If there is water on the rear floor, do **REPAIR PROCEDURE E** and/or **G**.
- If water is entering the vehicle at the A-pillar clip, do **REPAIR PROCEDURE F**.
- If water is entering the vehicle through the seam sealer at the junction of the A-pillar and the underside of the cowl, do **REPAIR PROCEDURE H**.

Once your diagnosis is complete, do the needed repairs. After speaking with the customer, if you cannot diagnose the problem using the information in step 2, this service bulletin does not apply. Continue looking for other sources of the leak.

REPAIR PROCEDURE A

1. Remove the inner fender:
 - Refer to page 20-178 of the *2006–2008 Ridgeline Service Manual*, or
 - Online, enter keyword **FENDER**, and select **Front Inner Fender Replacement** from the list.
2. Inspect the seam sealer on the lower A-pillar behind the inner fender for gaps or incomplete sealing.



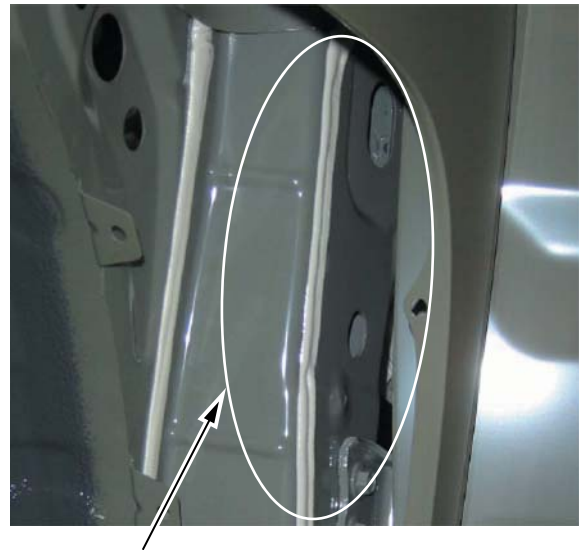
Inspect the seam sealer on the lower A-pillar behind the inner fender.

3. Apply sealer/sealant where it is missing.
4. Reinstall all removed parts.

REPAIR PROCEDURE B

1. Remove the inner fender:
 - Refer to page 20-178 of the *2006–2008 Ridgeline Service Manual*, or
 - Online, enter keyword **FENDER**, and select **Front Inner Fender Replacement** from the list.
2. Inspect the sealer on the upper A-pillar between the front door hinges for gaps or incomplete sealing.

3. Apply sealer/sealant where it is missing.



Inspect the seam sealer on the upper A-pillar between the front door hinges.

4. Reinstall all removed parts.

REPAIR PROCEDURE C

1. Check for missing sealer between the A-pillar and the cowl near the lower corner of the windshield. (Procedures C and F are different. See step 2 of DIAGNOSIS.)

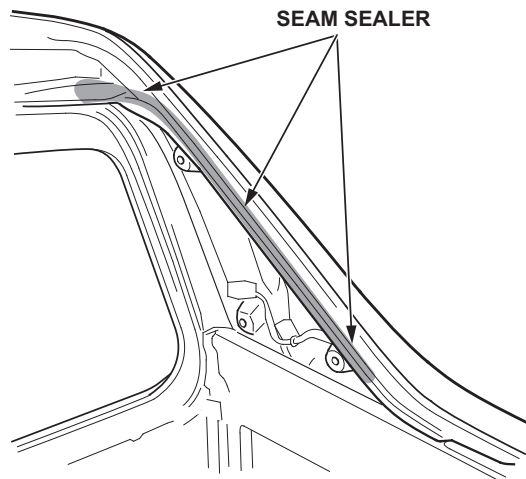


Check for missing sealer between the A-pillar and cowl next to the lower corner of the windshield.

2. Apply sealer/sealant where it is missing.
3. Reinstall all removed parts.

REPAIR PROCEDURE D

1. Remove the right-side bed rail trim:
 - Refer to page 20-134 of the *2006-2008 Ridgeline Service Manual*, or
 - Online, enter keyword **BED RAIL**, and select **Pickup Bed Rail Trim Replacement** from the list.
2. Remove the top-right TORX bolt from the front bed panel:
 - Refer to page 20-136 of the service manual, or
 - Online, enter keyword **FRONT BED PANEL**, and select **Front Bed Panel Removal/Installation** from the list.
3. Lay a protective cover (towel or blanket) on the roof near the rear roof trim. Remove the trim, and lay it on the cover (you don't need to disconnect the electrical connectors):
 - Refer to page 20-150 of the service manual, or
 - Online, enter keyword **ROOF TRIM**, and select **Rear Roof Trim Replacement** from the list.
4. Remove the C-pillar outer trim and the cargo area front light:
 - Refer to page 20-135 of the service manual, or
 - Online, enter keyword **C-PILLAR**, and select **C-pillar Outer Trim Replacement** from the list.
5. Apply 3M Brushable Seam Sealer to the area shown.



6. Reinstall all parts in the reverse order of removal (use new clips and grommets).
7. If needed, dry the interior carpet, the pad, the seat belt, and the seat.

REPAIR PROCEDURE E

1. Remove the rear roof trim:
 - Refer to page 20-175 of the *2006-2008 Ridgeline Service Manual*, or
 - Online, enter keywords **ROOF TRIM**, and select **Rear Roof Trim Replacement** from the list.
2. Remove the roof trim grommet, and check for seam sealer underneath it. Clean any sealer that may be keeping the grommet from sealing to the body.

Check for seam sealer underneath the roof trim grommet.



3. Reinstall all parts in the reverse order of removal, and use new clips and grommets for the rear roof trim.

REPAIR PROCEDURE F

1. Remove these parts:
 - Passenger's kick panel:
 - Refer to page 20-59 of the *2006-2008 Ridgeline Service Manual*, or
 - Online, enter keyword **KICK**, and select **Interior Trim Removal/Installation - Door Areas** from the list.
 - Glove box:
 - Refer to page 20-84 of the service manual, or
 - Online, enter keyword **GLOVE**, and select **Glove Box Removal/Installation** from the list.
2. Remove the three VTM-4 controller attachment bolts.

3. Using a pry tool, detach the wire harness clips at the locations shown, then move the VTM-4 controller out of the way.



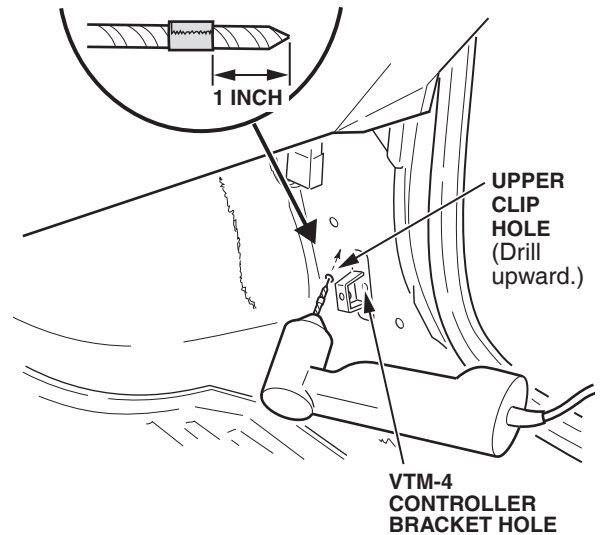
WIRE HARNESS CLIPS
(Detach in two places.)

4. Using a chisel, remove the exposed black clip near the controller bracket.

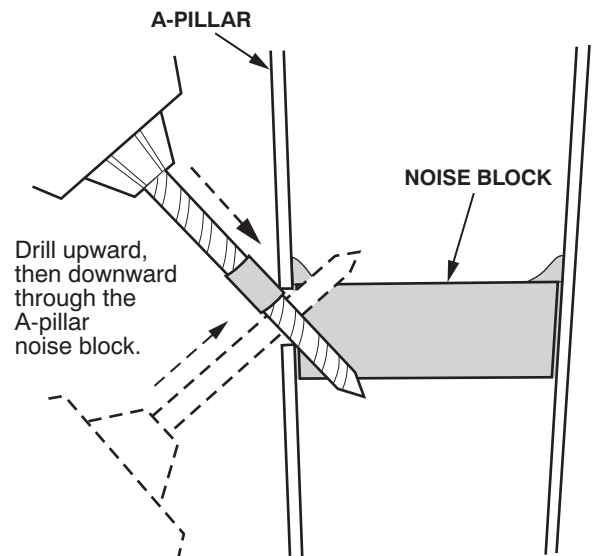


CLIP

5. Drill a new drain hole where you removed the clip:
 - Wrap a piece of tape around a 3/16 inch drill bit 1 inch from the end.
 - Position the drill so the bit is pointing at an upward angle, and drill a hole into the A-pillar noise block.



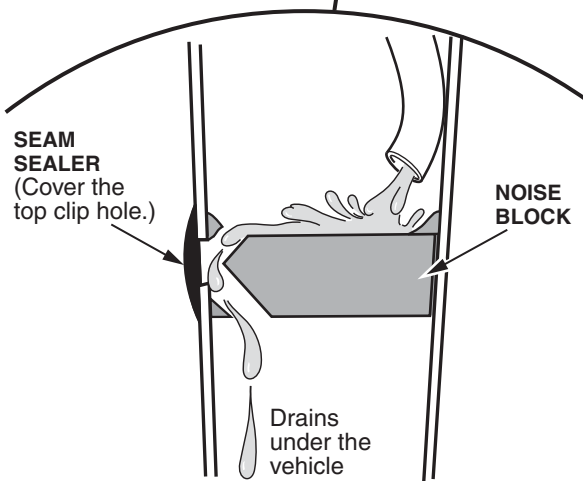
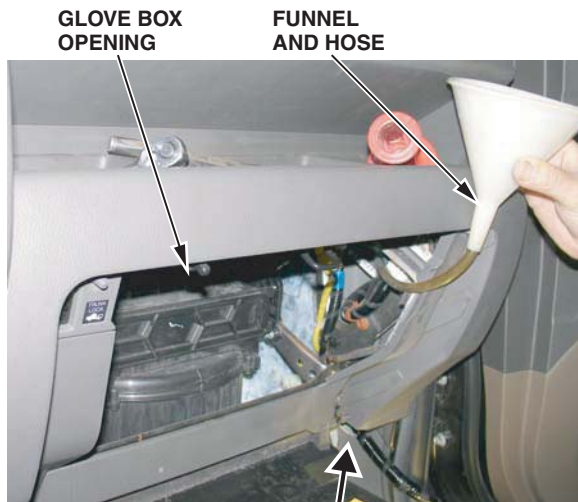
- Reposition the drill so the bit is pointing at a downward angle, and drill a second hole into the noise block.



6. To prevent rusting, apply primer to any surface area cut with the drill bit.
7. Clean the area around the clip hole and the hole under the VTM-4 controller bracket with isopropyl alcohol.
8. Coat the clip hole and the open hole under the VTM-4 controller bracket with seam sealer, and let it to dry for about 15 minutes. Use 3M Brushable Seam Sealer or equivalent.

NOTE: Do not fill the drilled hole with seam sealer. It will block the flow of water.

9. To verify the repair, pour about 3 to 4 oz. (100 ml) of water inside the A-pillar using a funnel and hose. The water should drain out through the bottom of the A-pillar below the passenger compartment floor.



10. Reinstall the VTM-4 controller, the glove box, and the passenger's kick panel.

REPAIR PROCEDURE G

Remove the rear window, and reinstall it (**be sure the window and the frame are properly positioned**). Be sure to reinstall all parts in the reverse order of removal, and use new clips and grommets for the rear roof trim:

- Refer to page 20-37 of the *2006–2008 Ridgeline Service Manual*, or
- Online, enter keywords **REAR WINDOW**, and select **Rear Window Replacement** from the list.

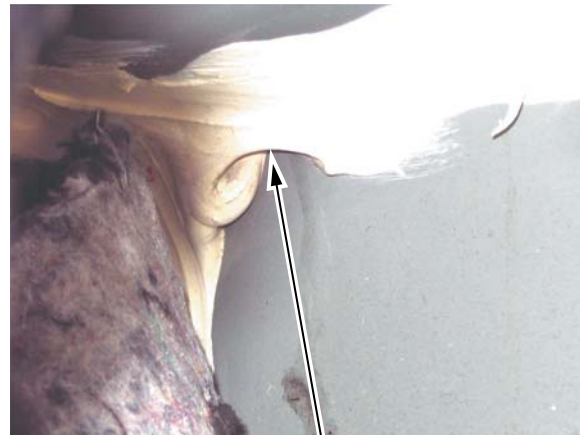
REPAIR PROCEDURE H

1. Remove the front seats:
 - Refer to page 20-97 of the Service Manual, or
 - Online, enter keywords **SEAT REMOVAL**, and select **Front Seat Removal/Installation** from the list.
2. Remove the instrument panel:
 - Refer to page 20-81 of the *2006–2008 Ridgeline Service Manual*, or
 - Online, enter keywords **INSTRUMENT PANEL**, and select **Instrument Panel Removal/Installation** from the list.
3. Remove the insulation from the area shown below.



Remove the insulation from this area.

4. Check for missing sealer under the instrument panel, where the cowl area on the left and right sides meet the A-pillar.



Check for missing sealer.

5. Apply sealer to any areas where there are gaps or where it is missing.
6. Reinstall all removed parts.