



# INSTRUCTIONS

-J04704

REV. 2008-08-18

## VRSCF RIGID SADDLEBAGS

### GENERAL

#### Kit Number

91172-09

#### Models

For model fitment information, see the P&A retail catalog or the Parts and Accessories section of [www.harley-davidson.com](http://www.harley-davidson.com) (English only).

#### WARNING

**Do not exceed saddlebag weight capacity. Put equal weight in each bag. Too much weight in saddlebags can cause loss of control, which could result in death or serious injury. (00383a)**

#### NOTE

Maximum saddlebag weight capacity is **10 pounds (4.5 kg)**.

#### Tools and Supplies Required

Loctite® 243 Threadlocker and Sealant - Blue (H-D Part Number 99642-97) is required for the proper installation of this kit.

#### WARNING

**The rider's safety depends upon the correct installation of this kit. Use the appropriate service manual procedures. If the procedure is not within your capabilities or you do not have the correct tools, have a Harley-Davidson dealer perform the installation. Improper installation of this kit could result in death or serious injury. (00333a)**

#### NOTE

*This instruction sheet references service manual information. A service manual for this model motorcycle is required for this installation and is available from a Harley-Davidson Dealer.*

#### Kit Contents

See Figure 5 and Table 1.

### PREPARATION

#### WARNING

**To prevent accidental vehicle start-up, which could cause death or serious injury, remove main fuse before proceeding. (00251b)**

1. Refer to the service manual and follow the instructions given to remove the main fuse.
2. Remove the rider seat and passenger pillion per the instructions in the service manual.

3. See Figure 1. Remove the four rear fender mounting bolts (1) and washers (2), and the passenger grab strap (3). If necessary, move the ECM to better access the fender mounting bolts.

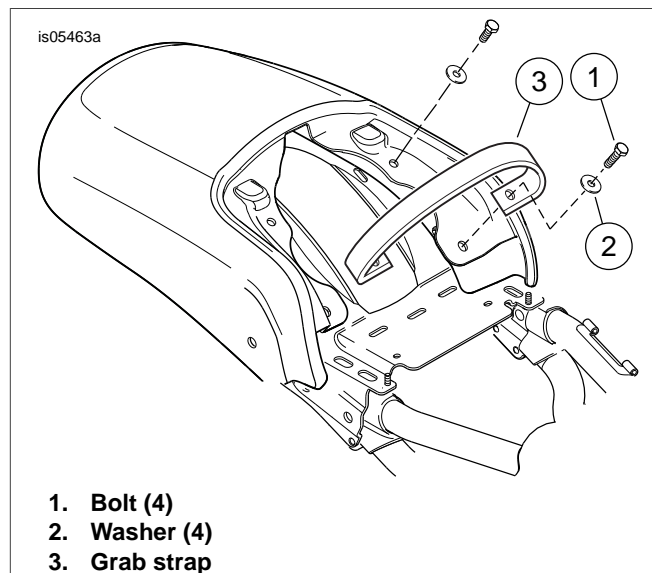


Figure 1. Fender Mounting Bolts

4. Disconnect the six-way tail lamp socket housing and four-way turn signal lamp socket housing from the vehicle main harness following the instructions in the service manual. Disconnect the two-way license-plate illuminator socket housing from the tail lamp harness.
5. **If a luggage rack, sissy bar upright or both have been mounted on the rear fender**, remove the two screws and washers, and two carriage bolts and nuts that secure the luggage rack bracket to the seat pan.

#### NOTE

*The rack and/or upright will remain attached to the rear fender when the fender is removed.*

6. Remove the rear fender from the seat pan by lifting upward and sliding the fender back.
7. **If a center-mounted license bracket is installed**, it can remain attached to the seat pan.

**If a side-mounted license bracket is installed:**

- a. Remove the license plate from the vehicle (if installed), and set aside for later installation.
- b. See Figure 2. Remove the two bolts (8) holding the side license-plate bracket (1) to the seat pan (9).
- c. Remove the license-plate adjuster bracket (2) carriage bolt (3), washer (4) and lock nut (5), and the license-plate illuminator (6) and screws (7) from the bracket.
- d. The original equipment (OE) license-plate bracket (1), screws (7) and bolts (8) can be discarded. Set the remaining items aside for installation to the **new** side license-plate bracket.

8. Remove and discard the rear side reflectors (10).

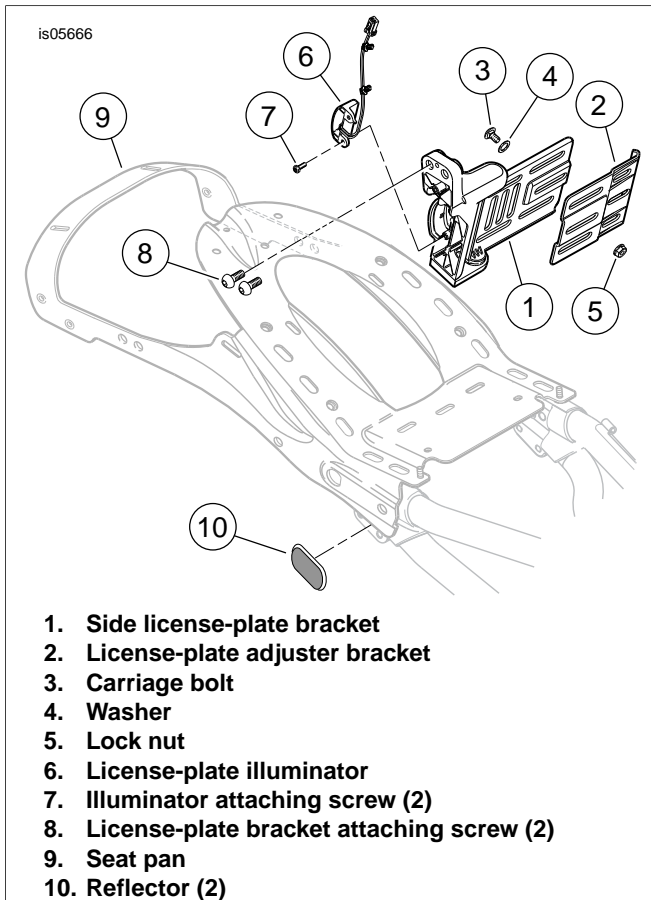
**If a center-mounted license bracket is installed,** remove the reflectors from the license bracket sides. Remove any residual adhesive from the bracket.

**If a side-mounted license bracket is installed,** remove the reflectors from the upper frame just forward of the shock absorbers. Remove any residual adhesive from the reflector mounting area on the frame.

**NOTE**

Access to the shock absorber adjustment collar is more difficult with the saddlebags in place.

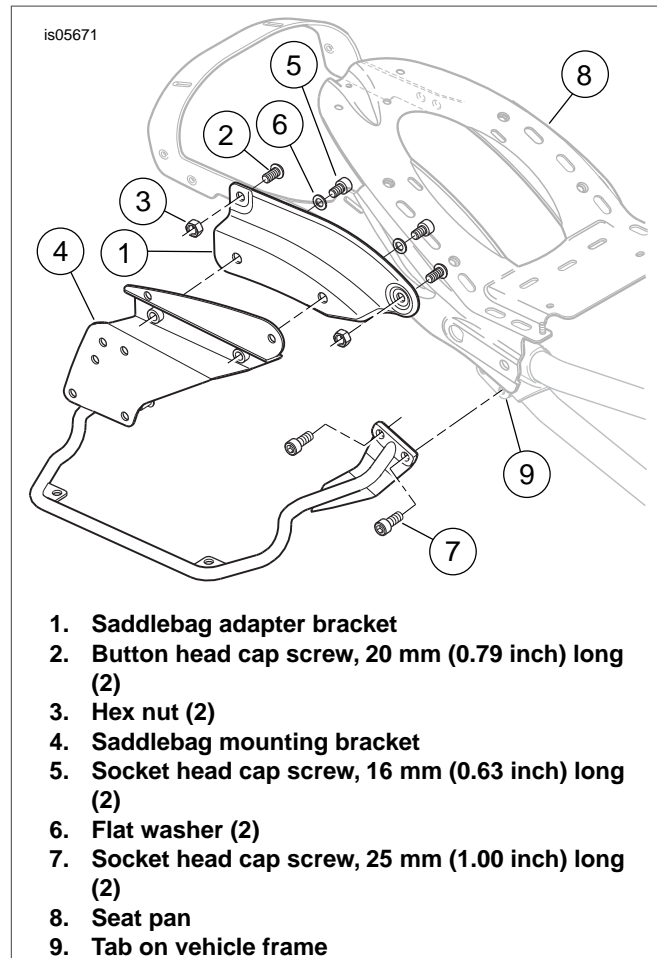
9. Adjust the rear suspension preload, if desired, per the instructions in the service manual.



**Figure 2. Original Equipment License Plate Bracket**

**SADDLEBAG BRACKET INSTALLATION**

1. See Figure 3. Obtain the right-side saddlebag adapter bracket (1), two M10 x 20 mm (0.79 inch) long button head cap screws (2) and two M10 hex nuts (3) from the kit.
2. Apply a few drops of Loctite 243 - Blue to the screw threads.  
Attach the adapter bracket to the outside of the seat pan (8) with the screws and nuts, and tighten to 47.5 Nm (35 ft-lbs).
3. Repeat steps 1 and 2 for the left-side saddlebag adapter bracket.
4. Obtain the right-side saddlebag mounting bracket (4), two M10 x 16 mm (0.63 inch) long hex socket head cap screws (5), two M10 x 25 mm (1.00 inch) long hex socket head cap screws (7) and two M10 flat washers (6) from the kit.
5. Apply a few drops of Loctite 243 - Blue to the threads of the two **shorter** screws (5).  
Attach the saddlebag mounting bracket to the saddlebag adapter bracket (1) with the short screws and flat washers, but do not fully tighten.



**Figure 3. Saddlebag Bracket Installation**

6. Apply a few drops of Loctite 243 - Blue to the threads of the two **longer** screws (7).  
Attach the saddlebag mounting bracket to the tab (9) on the vehicle frame just forward of the shock absorber. Alternately tighten all four screws to 24.4 Nm (18 ft-lbs).

- Repeat steps 4 through 6 for the left-side saddlebag mounting bracket.

- If a center-mounted license bracket is installed on the fender, the side-mount license-plate relocation kit (13) can be discarded.**

See Figure 5. **If a side-mounted license bracket was installed on the vehicle:**

- Obtain the side-mount license-plate relocation kit (13) from the saddlebag kit, and the license-plate adjuster bracket (A) carriage bolt (B), washer (C), lock nut (D) and license-plate illuminator (E) removed earlier.
- Apply a few drops of Loctite 243 - Blue to the threads of the three M8 screws (17), and install the license-plate bracket (14) to the inboard side of the left saddlebag mounting bracket (5).  
Tighten the screws to 13.6 Nm (10 ft-lbs).
- Apply a few drops of Loctite 243 - Blue to the threads of the two M4 screws (16). Insert the screws through the illuminator (E) and the tab on the license-plate bracket (14), and thread into the illuminator cover (15) as shown. Seat the lens securely to the bracket tab, but **DO NOT** overtighten.
- Install the adjuster bracket (A) with the carriage bolt (B), washer (C) and lock nut (D). Install the license plate (if removed). Tighten the lock nut securely.

#### NOTE

*When installing the rear fender, verify that the three wiring harnesses and connectors are routed through the low spot in the seat pan to make sure there is adequate clearance between the rear fender and the seat pan.*

- Install the rear fender and passenger grab strap per the instructions in the service manual, taking care to correctly route the harness.
- If a luggage rack, sissy bar upright or both are mounted on the rear fender, secure the luggage rack bracket to the seat pan with the two screws and washers, and two carriage bolts and nuts removed earlier.**  
Tighten the nuts and screws to 7-9 Nm (62-80 in-lbs).
- Connect the six-way tail lamp socket housing and four-way turn signal lamp socket housing to the vehicle main harness following the instructions in the service manual. Connect the two-way license-plate illuminator socket housing to the pin housing on the tail lamp harness.  
Stow the harnesses and connectors to make sure they are not damaged and remain clear of the rear tire.
- Install the passenger pillion per the instructions in the service manual.
- If installing a gas shock seat strut kit (22) to the rider seat, follow the instructions in that kit.**  
**If NOT installing a gas shock seat strut kit, install the rider seat per the instructions in the service manual.**

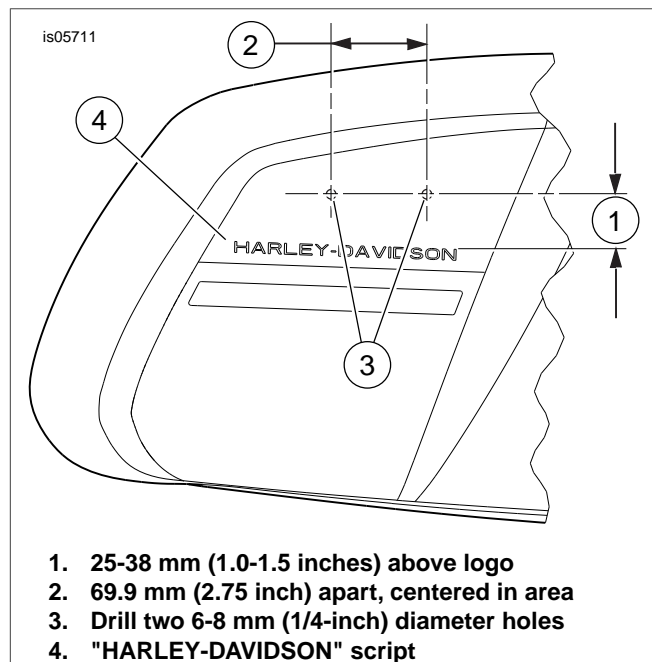
**ALL installations:** Close the seat.

## WARNING

**After installing seat, pull upward on seat to be sure it is locked in position. While riding, a loose seat can shift causing loss of control, which could result in death or serious injury. (00070b)**

## SADDLEBAG REFLECTOR INSTALLATION

- Obtain the right-side saddlebag (1) and a reflector kit (18).
- See Figure 4. Place the saddlebag on a smooth, clean surface so that the "Harley-Davidson" script (4) on the side of the bag is facing upward.
- Measure and mark as shown (1 and 2) with a paint pen or marker to identify the drilling locations (3).
- Carefully drill two 6-8 mm (1/4 inch) diameter holes through the soft outer surface and the hard inner saddlebag tub. Remove any burrs and debris.
- See Figure 5. Insert the posts on the reflector mount (19) through the drilled holes, and fasten with two push nuts (21).
- Clean the recesses of the reflector mount with isopropyl alcohol to remove any oils or debris.
- Remove the liner from the adhesive backing of the reflector (20). Carefully position the reflector to the mount, and press firmly into place, holding the reflector in position with steady pressure for a few moments.
- Repeat Steps 1 through 7 with the left-side saddlebag.



**Figure 4. Reflector Position on Saddlebag**

## SADDLEBAG INSTALLATION

1. Obtain twelve M8 x 16 mm (0.63 inch) long screws (3) from the kit.
2. Apply a few drops of Loctite 243 - Blue to the threads of six screws, and install the right-side saddlebag (1) to the saddlebag mounting bracket (4).

Tighten the screws to 13.6 Nm (10 ft-lbs).

3. Repeat Step 2 for the left-side saddlebag.

## RETURN TO SERVICE

1. Verify that the ignition/key switch is turned to the OFF position.

Refer to the service manual and follow the instructions given to install the main fuse.

## SERVICE PARTS

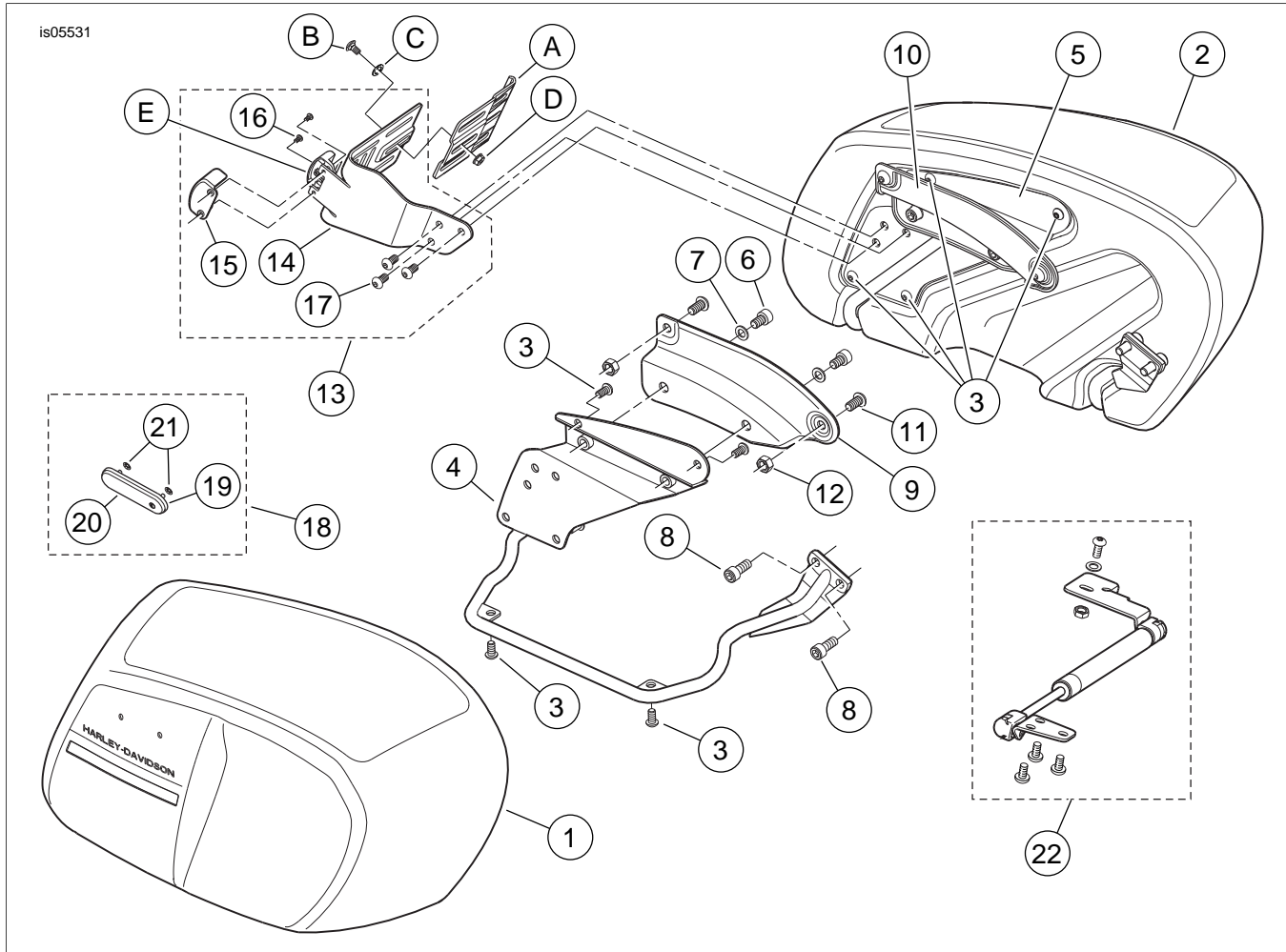


Figure 5. Service Parts, VRSCF Rigid Saddlebags

## SERVICE PARTS

Table 1. Service Parts Table

Item	Description (Quantity)	Part Number
1	Saddlebag, right side	91182-09
2	Saddlebag, left side	91183-09
3	Hex socket button head cap screw, M8 x 16 mm (0.63 inch) long (12)	3145M
4	Bracket, saddlebag mounting (right)	Not sold separately
5	Bracket, saddlebag mounting (left)	Not sold separately
6	Hex socket head cap screw, M10-1.5 x 16 mm (0.63 inch) long (4)	4642M
7	Flat washer, M10, heat treated (4)	6812
8	Hex socket head cap screw, M10-1.5 x 25 mm (1.00 inch) long (4)	3701M
9	Bracket, saddlebag adapter (right)	Not sold separately
10	Bracket, saddlebag adapter (left)	Not sold separately
11	Hex socket button head cap screw, M10-1.5 x 20 mm (0.79 inch) long (4)	4639M
12	Hex nut, M10-1.5 (4)	7440M
13	Side-mount license plate relocation kit (includes items 14 through 17)	60926-09
14	• Bracket, license plate	Not sold separately
15	• Cover, license plate illuminator	Not sold separately
16	• Button head hex socket screw, M4 x 10 mm (0.39 inch) long (2)	Not sold separately
17	• Hex socket button head cap screw, M8 x 16 mm (0.63 inch) long (3)	3145M
18	Reflector kit (2) (includes items 19 through 21)	59480-04
19	• Reflector mount	Not sold separately
20	• Reflector (red)	Not sold separately
21	• Push nut (2)	Not sold separately
22	Gas Shock Seat Strut Kit	91359-09
<b>Items mentioned in text, but not included in kit:</b>		
A	Original equipment (OE) license-plate adjuster bracket	
B	OE license-plate bracket carriage bolt	
C	OE flat washer	
D	OE flanged lock nut	
E	OE license-plate illuminator	