

Dental- Information

Sirona Dental Systems – Fabrikstraße 31 – D-64625 Bensheim

June 2010

The topics in this issue:

GENERAL

- Public holiday in June 2010 Page 2

TREATMENT CENTERS

- TENEO: extended firmware version 5.0 now available Page 3
- All-round comfort: the new CARL and PAUL stools Page 4
- TENEO: main shut-off valve has been modified Page 8
- Updated TENEO service manual Page 8
- C8 stool to be discontinued Page 9
- C1, model 94: discontinuation of spare parts Page 10
- Maintenance of our treatment centres is mandatory Page 10

HANDPIECES

- T1 LINE/T1 CLASSIC/SIROPure: new external spray clip Page 11

HYGIENE SYSTEMS

- DAC UNIVERSAL: heating element Page 12
- DAC UNIVERSAL: design changes Page 13
- DAC UNIVERSAL: new accessories Page 13
- DAC UNIVERSAL: new software version Page 14
- DAC PROFESSIONAL: new vacuum pump Page 15
- NITRADEM DIRECT CONNECT: new accessories Page 15

IMAGING SYSTEMS

- GALILEOS, ORTHOPHOS XG and HELIODENT^{Plus}: indication of the dose area product Page 16

CAD/CAM SYSTEMS

- Pairing of the H&W wireless modules under Windows 7 64 bit Page 17
- CEREC Bluecam: scratch-resistant prism Page 17
- New TiBase products Page 18
- Straumann CARES material pack for inLab V3.65 Page 18
- inLab 3D: software upgrade V3.80 Page 19

GENERAL

Public holiday in June 2010

We would like to remind you that we will be closed for business on:

4 June 2010

However, you can still contact the Customer Service Centre between 8.00 a.m. and 4.00 p.m. on this day (the relevant phone and fax numbers are shown on the last page of this issue of "Dental-Information"). Please note that delivery delays may occur in isolated cases.

We will also be closed on

3 June 2010 (Corpus Christi)

On this public holiday, the Customer Service Centre will not be available, nor will it be possible to make any deliveries. Please allow for this in your forward planning.

We apologize for any inconvenience caused.

Kind regards,
The Customer Service Centre

TREATMENT CENTRES

TENEO: extended firmware version 5.0 now available

We have modified the firmware for the TENEO treatment centres. The new version 5.0 will be introduced as from the middle of June.

Important note:

When updating the TENEO firmware to version 5.0, you must also update the SIUCOM plus software (Version V1.3.55) and the DUMC software (Version V1.3.1) on the treatment centre computer(s).

As from mid June, the software updates can be downloaded from the Sirona website:

www.sirona.com → DEALER AREA → PRODUCT INFO → Treatment Centres

Compared with Version 4.2, the following changes/improvements have been made:

- **Support for the ApexLocator option**
Version 5.0 supports the ApexLocator option in combination with the corresponding installation kits and retrofit kits.
- **Adjusting the headrest to the patient's height while the treatment centre is in motion**
Pressing the headrest in/out key on the EasyTouch touchscreen or the headrest control panel no longer halts the movement of the chair. This means that adjustments can be made efficiently while the chair is still in motion.
- **Configuration of the X-ray viewer key on the assistant's element**
In the Setup program, the Bell or Hash function can be assigned user-independently to the X-ray viewer key.
- **Cursor position in program "0"**
When the cursor mode is activated, the cursor jumps automatically to the headrest in/out function when program position "0" is reached (applies only if a motor-driven headrest is fitted). This supports hands-free operation analogous to that realized in the C-series treatment centres.
- **Optimized swivelling function of the cuspidor bowl for TENEO units not fitted with armrests**
The cuspidor bowl swivels towards the rinsing position while the chair is still in motion. This results in added convenience for the patient.

- **Additional file systems**

The range of files/file systems has been extended to include the following:

- Medin: WIZARD CD Plus
- VDW: FlexMaster
- Komet: AlphaKite and EasyShape
- DentsplyMaillefer: ProTaper, GT Series X and PathFile
- KentDental: CMA
- SybronEndo: Twisted Files
- FKG: BioRaCe, RaCe und D-RaCe
- Guidance Endo: V-Taper

The complete list of modifications compared with version 4.2 is contained in the version descriptions included with the software.

We have also updated the CD containing the TENEO PC software (REF. 62 27 842). Among other improvements, the CD contains a service-friendly import function for the configuration of third-party applications (video applications).

All-round comfort: the new CARL and PAUL stools

As from July, Sirona will offer two new stools:

- CARL targeted at the medium price segment
- PAUL for the lower price segment

Two versions of the CARL stool are available: CARL Manual and CARL Manual Plus with foot ring.



CARL Manual

CARL Manual Plus

PAUL

PAUL with foot ring

The key features of the CARL and PAUL stools are as follows:

CARL	PAUL
Circular seat cushion with comfortable upholstery	
360° release mechanism: simple height adjustment via an easily accessible release ring underneath the entire circumference of the seat cushion	Simple height adjustment via a laterally mounted release lever
Backrest infinitely rotatable through 360°; can be used as an armrest or lumbar support	Backrest rotatable through approx. 90°; can be used as an armrest or lumbar support
CARL Manual Plus: foot ring compensates for differences in height between dentist and assistant	Optional foot ring (chrome-plated) compensates for differences in height between dentist and assistant

As is the case with the HUGO stool, the CARL and PAUL stools are available at no extra charge with either a long gas spring or a short gas spring, thus catering for tall users and short users respectively:

Height of user in cm*	Gas spring
150 – 180	Short gas spring
170 – 205	Long gas spring

*These figures can vary from user to user!

Ordering details

The CARL and PAUL stools are available separately or in combination with a treatment centre:

1a) CARL as a separate stool

Like the HUGO stool, the CARL stool is available in two different versions catering for tall users and short users respectively:

Designation	REF.	EUR, excl. VAT	Pr. Gr.
CARL stool	63 13 253		01
CARL for users in the height range 1.70 – 2.05 m	62 04 056*		
CARL for users in the height range 1.50 – 1.80 m	62 04 064*		
CARL Manual with 360° manual release ring	62 53 202*	890.00	
CARL Manual with 360° manual release ring and foot ring	62 53 210*	990.00	

In addition, a colour must be selected – either from the current range of colours or from the range of colours valid until April 2009 (= older treatment centres).

1b) PAUL as a separate stool

Like the C8 stool, the Paul stool is available in the following colours:

Colour	PAUL for users in the height range 1.70 – 2.05 m		PAUL for users in the height range 1.50 – 1.80 m	
	REF.	EUR, excl. VAT	REF.	EUR, excl. VAT
Pacific	63 12 891	530.00	63 12 768	530.00
Aubergine	63 12 909	530.00	63 12 776	530.00
Marble	63 12 917	530.00	63 12 784	530.00
Carbon	63 12 925	530.00	63 12 792	530.00
Cotto	63 12 933	530.00	63 12 800	530.00
Amber	63 12 941	530.00	63 12 818	530.00
Ginger	63 12 958	530.00	63 12 826	530.00
Chestnut	63 12 966	530.00	63 12 834	530.00
Spring	63 12 974	530.00	63 12 842	530.00
Melon	63 12 982	530.00	63 12 859	530.00
Sunset	63 12 990	530.00	63 12 867	530.00
Lagoon	63 13 006	530.00	63 12 875	530.00
White	63 15 787	530.00	63 15 639	530.00
Smoky blue	63 15 795	530.00	63 15 647	530.00
Planet blue	63 15 803	530.00	63 15 654	530.00
Deep-sea blue	63 15 811	530.00	63 15 662	530.00
Lime green	63 15 829	530.00	63 15 670	530.00
Mint green	63 15 837	530.00	63 15 688	530.00
Ginkgo green	63 15 852	530.00	63 15 696	530.00
Sand	63 15 860	530.00	63 15 704	530.00
Sahara yellow	63 15 878	530.00	63 15 712	530.00
Mango	63 15 886	530.00	63 15 720	530.00
Terracotta	63 15 894	530.00	63 15 738	530.00
Garnet red	63 15 902	530.00	63 15 746	530.00
Cocoa	63 15 910	530.00	63 15 753	530.00
Anthracite	63 15 928	530.00	63 15 761	530.00
Black	63 15 936	530.00	63 15 779	530.00

Optional foot ring for the PAUL stool

The foot ring is available as an optional extra for the PAUL stool:

Designation	REF.	EUR, excl.	Pr.
Foot ring	63 12 354	100.00	01

2. Orders in combination with a new treatment centre

The CARL stool is available as follows with a new treatment centre:

As is the case with the HUGO stool, the first step is to choose the required stool height:

Designation	REF.
Chair for users in the height range 1.70 – 2.05 m	62 04 056*
Chair for users in the height range 1.50 – 1.80 m	62 04 064*

Following this, you select the required stool version:

Treatment centre/ CARL version	1 st CARL stool		2 nd CARL stool	
	REF.	EUR, excl. VAT	REF.	EUR, excl. VAT
TENEO in combination with “Comfort” package				
CARL Manual	62 53 202*	No additional charge/price reduction	62 53 202*	No additional charge/price reduction
CARL Manual Plus	62 53 210*	No additional charge/price reduction	62 53 210*	No additional charge/price reduction
TENEO with CARL as a separate option				
CARL Manual	62 53 202*	890.00	62 53 202*	890.00
CARL Manual Plus	62 53 210*	990.00	62 53 210*	990.00
M1⁺				
CARL Manual	62 53 236*	Price reduction 200.00	62 53 236*	Price reduction 200.00
CARL Manual Plus	62 53 244*	Price reduction 200.00	62 53 244*	Price reduction 200.00

C3⁺, C4⁺, C5⁺				
CARL Manual	62 53 236*	Price reduction 200.00	62 53 202*	890.00
CARL Manual Plus	62 53 244*	Price reduction 200.00	62 53 210*	990.00
C8⁺				
CARL Manual	62 53 202*	890.00	62 53 202*	890.00
CARL Manual Plus	62 53 210*	990.00	62 53 210*	990.00
PAUL stool	Depending on colour (see above)	530.00	Depending on colour (see above)	530.00
Foot ring for PAUL stool	63 12 354	100.00	63 12 354	100.00

* These REF. numbers are for ordering purposes only. They do not appear in the order documents or delivery documents.

It is also possible to order the CARL and PAUL stools without upholstery:

Designation	REF.	EUR, excl. VAT
CARL stool without upholstery	62 53 228*	Price reduction 160.00
PAUL stool without upholstery for users in the height range 1.70 – 2.05 m	63 13 014	370.00
PAUL stool without upholstery for users in the height range 1.50 – 1.80 m	63 12 883	370.00

Orders for the PAUL and CARL stools will be accepted/confirmed as from the middle of June. Deliveries will commence as from the middle of July.

TENEO: main shut-off valve has been modified

In isolated cases, leaks have occurred in the **main shut-off valve (REF. 61 94 877)** in the chair base. A modified version of the valve has been introduced as from chair serial number 3104 (treatment centre serial number 101316). The modified valve can be identified on the basis of its serial number (≥ 4000). Our spare parts inventory was adjusted with effect from 3 May 2010.

If you still have stocks of main shut-off valves with serial numbers < 4000 , we request you to scrap these valves. If you submit a single order by 31 July 2010 together with the relevant proof of delivery (on or after 1 September 2009), you will receive modified main shut-off valves (REF. 61 94 877) free of charge.

Updated TENEO service manual

We have revised and updated the **TENEO service manual (REF. 61 94 430)**. The service manual has been extended to cover technical modifications to the TENEO treatment centre, including the NAA module for the newly integrated ApexLocator function.

Available for downloading as of now, the TENEO service manual provides valuable support for service technicians.

C8 stool to be discontinued

The C8 stool has been discontinued. Remaining stocks will be sold off. The following items are affected:

Designation	REF.
C8 stool, Marble	62 42 916
C8 stool, Carbon	62 42 924
C8 stool, Amber	62 42 932
C8 stool, Chestnut	62 42 940
C8 stool, Spring	62 42 957
C8 stool, Sunset	62 42 965
C8 stool, Lagoon	62 42 973
C8 stool, Pacific	62 43 054
C8 stool, Aubergine	62 43 062
C8 stool, Cotto	62 43 070
C8 stool, Ginger	62 43 088
C8 stool, Melon	62 43 096
C8 stool, Sand	61 72 717
C8 stool, Mint green	58 79 163
C8 stool, Planet blue	58 79 189
C8 stool, Smoky blue	58 79 197
C8 stool, White	58 79 205
C8 stool, Black	58 79 213
C8 stool, Sahara yellow	58 79 312
C8 stool, Mango	58 79 320
C8 stool, Deep-sea blue	58 79 338
C8 stool, Lime green	58 79 346
C8 stool, Ginkgo green	61 72 709
C8 stool, Anthracite	61 20 773
C8 stool, Garnet red	61 20 781
C8 stool, Cocoa	61 20 799
C8 stool, Terracotta	61 20 807
C8 stool, Arctic green	58 79 288
C8 stool, Grey	58 79 304
C8 stool, Steel blue	58 79 171

C1, model 94: discontinuation of spare parts

The following spare parts have been discontinued by our suppliers and are unavailable with immediate effect:

Designation	REF.
Hose set for dentist's element	14 34 484
Slide for dentist's element	41 89 622

Note: The C1, model 96, and the C1⁺ are not affected.

Maintenance of our treatment centres is mandatory

We would like to remind you once again that, as manufacturer of medical devices, we are obliged to specify measures for the safe operation of our products. Alongside safety checks, preventive maintenance makes a major contribution to the safety of a dental treatment centre. As is the case with a motor vehicle, a treatment centre must be regularly maintained by service technicians who have been trained and authorized by the manufacturer. For some time now, our operating instructions have contained information about mandatory maintenance procedures.

Preventive maintenance not only increases safety, but also makes a decisive contribution to maximizing the service life and maintaining the value of a treatment centre.

We request you to inform your customers about maintenance-related issues when treatment centres are handed over to users.

HANDPIECES

T1 LINE/T1 CLASSIC/SIROPure: new external spray clip

Since 1 June 2010, a new external spray clip has been available. If required, the clip can be attached to the handpiece to facilitate additional cooling at the preparation site.



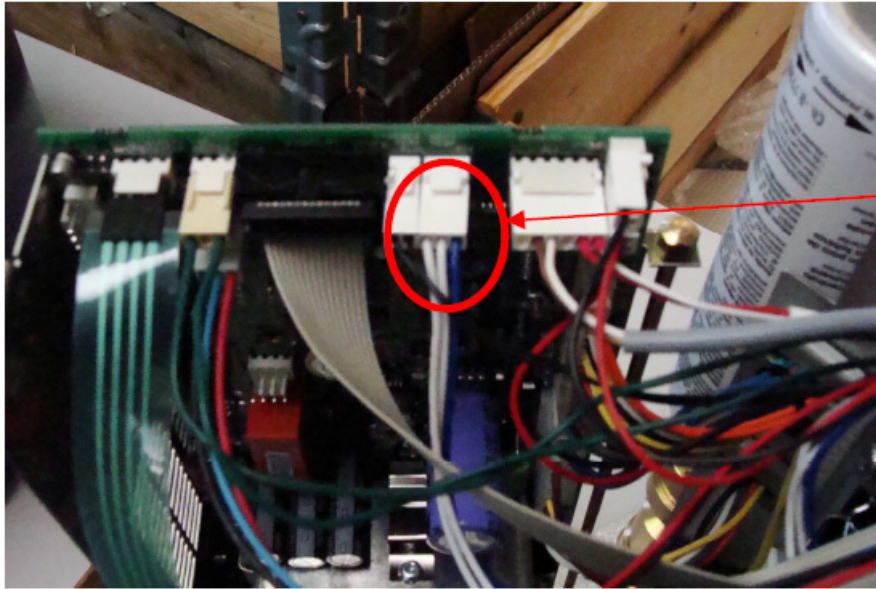
The REF. number and price have remained unchanged.

Designation	REF.	EUR, excl. VAT	Pr. Gr.
Spray clip H for handpieces	41 74 079	15.50	55

HYGIENE SYSTEMS

DAC UNIVERSAL: heating element

As from serial number 104653, the DAC UNIVERSAL has been equipped with a new heating element. The new heating element has a built-in fuse, as well as a new integrated thermo sensor. This sensor can be identified by the white and blue wires.



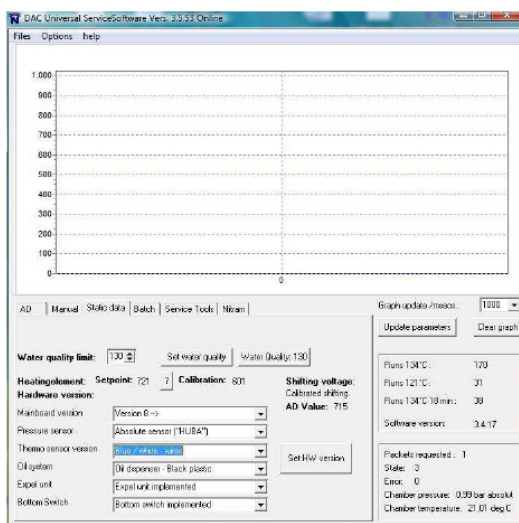
Also available as a spare part, the new heating element is backwardly compatible with all existing DAC UNIVERSAL units. The spare part REF. number (60 80 522) remains unchanged.

When an old heating element is replaced by a new heating element, it is also necessary to update the software:

Serial number 100000 – 103999: update with software version 3.3.20 (see below)

Serial number 104000 – 104653: update with software version 3.4.17

In addition, the thermo sensor must be set to “White and blue wires” in the service software 3.5.53.



DAC UNIVERSAL: design changes

(1) As from serial number 103739, the DAC UNIVERSAL will be equipped with foam plate for the steam pump mounting. The function of this foam plate is to prevent direct contact between the steam pump and the base plate. The new mounting and foam plate cannot be deployed in DAC UNIVERSAL units with serial numbers <103739 due the different drill holes for the fastening screws.

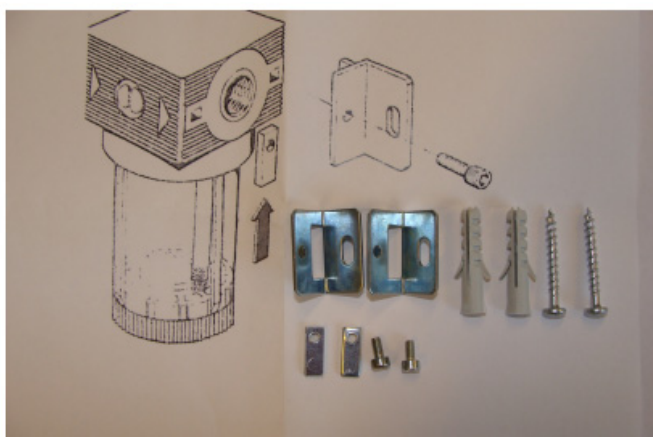
(2) As from serial number 104663, a new material (Viton) has been used for the pistons of valves 4 and 8. The spare part REF. of the new valve piston is 63 09 541. This REF. number has already been included in the DAC UNIVERSAL WRAPPED READY spare parts list, which can be ordered/downloaded via the Sirona Dealer Area.

(3) The cover plate (REF. 63 08 451) for the safety ring for the DAC UNIVERSAL without WRAPPED READY function (serial number <103999) is no longer available separately. The cover plate can be ordered together with the complete safety ring (REF. 60 79 151).



DAC UNIVERSAL: new accessories

(1) With immediate effect, a new wall mounting bracket (REF. 63 09 509) is available for the DAC UNIVERSAL air filter. This REF. number has already been included in the DAC UNIVERSAL WRAPPED READY spare parts list, which can be ordered/downloaded via the Sirona Dealer Area.



(2) A new water filter (REF. 63 12 214) is available for installation in the water supply line of the DAC UNIVERSAL. This REF. number has already been included in the DAC UNIVERSAL WRAPPED READY spare parts list, which can be ordered/downloaded via the Sirona Dealer Area.



DAC UNIVERSAL: new software version

A new software version (3.3.20) is available for the DAC UNIVERSAL without WRAPPED READY function (serial number <103999).

The new software version 3.3.20 can be installed on the DAC UNIVERSAL together with service software 3.5.53. We recommend that this new software version is installed whenever repairs and/or annual maintenance procedures are carried out on DAC UNIVERSAL units with serial numbers <103999. In the case of units without the expel function (serial number <100999), the expel function must be deactivated via the service software.

The installation file for software version 3.3.20 is available upon request from Ms Annette Carlson Bracher (acb@nitramdental.dk; Tel: +45 87 4390 77).

The following modifications have been implemented in the new software version 3.3.20:

- (1) Adjustment of the heating curve during sterilization.
- (2) Prior to each external wash, water is fed into the chamber for 36 seconds (previously: 30 seconds). This prevents a possible error 97 (no water during external wash) when the lid + basket is used.
- (3) Modification of the input power transformer to prevent the fuse from blowing.
- (4) Control of the new heating element (see above) and adjustment of the settings for the heating element calibration.
- (5) Adjustment of the water feed into the chamber in connection with Check & Clean water test.

DAC PROFESSIONAL: new vacuum pump

As from serial number 5022, the DAC PROFESSIONAL will be equipped with a new vacuum pump which is easier to repair and replace than its predecessor.

The new vacuum pump is also available as a spare part (REF. 63 14 707) and supersedes the two previously available pumps (REF. 61 26 416 and REF. 61 45 143).

NITRADEM DIRECT CONNECT: new accessories

With immediate effect, the NITRADEM DC hose set is available as a spare part (REF. 63 14 483). The hose set is still included in each NITRADEM DC complete set (REF. 62 59 852). It is no longer supplied together with the filter (REF. 61 98 431).



IMAGING SYSTEMS

GALILEOS, ORTHOPHOS XG and HELIODENT^{Plus}: indication of the dose area product

According to the German Expert Guidelines ("SV-RiLi"), as amended on 9 January 2009, all newly installed panoramic CT and CBVT units must display the dose area product, with effect from 1 July 2010. The indication of the dose area product is likewise mandatory in France (also for intraoral X-ray generators).

As from July 2010, new versions of the ORTHOPHOS XG and GALILEOS firmware will support the display of the dose area product – either directly on the X-ray unit, or via the SIDEXIS software and the X-ray logbook. The firmware update can be downloaded free of charge from the Sirona Dealer Area.

The dose area product is expressed in mGycm^2 . Overlays (e.g. in connection with panoramic programs) are taken into consideration. In the event that radiation is interrupted, the maximum possible dose area product is displayed.

In the case of the ORTHOPHOS XG units, the dose area product is displayed on the Multipad or Easypad after the X-ray has been acquired. It is not possible to display this information on the Remote Control. The GALILEOS units transmit the dose area product to the SIDEXIS software, where it is displayed together with the additional image information. In the case of the HELIODENT^{Plus} intra-oral X-ray unit, the dose area product is indicated on the display.

CAD/CAM SYSTEMS

Pairing of the H&W wireless modules under Windows 7 64 bit

The following aspects must be borne in mind when the Höft & Wessel wireless modules are operated under Windows 7 64:

1. Unfortunately, the software for pairing the radio modules (available on the installation CD) does NOT run under Win 7 64 bit.
2. However, the software can be installed on a different laptop/PC, which is then used to pair the wireless modules.
3. Following this, the paired wireless modules will operate without any problems in combination with the Windows 7 64 bit PC.

CEREC Bluecam: scratch-resistant prism

The prism of the CEREC Bluecam may become scratched, despite careful handling. For this reason, we now offer a prism tube equipped with protective sapphire glass. The only material capable of scratching the sapphire glass prism is diamond (e.g. as used in dental instruments and tooth jewellery).

The CEREC Bluecam prism tube with protective sapphire glass is available as a spare part:

Designation	REF.	EUR, excl. VAT.	Pr. Gr.
CEREC Bluecam prism tube, sapphire	62 62 153	1,400.00	16

Reduced prices for replacement graphics cards

Designation	REF.	EUR, excl. VAT	Pr. Gr.
Graphics card HA – H_, replacement	62 24 468	349.00	57
Graphics card KA, replacement	62 60 280	349.00	57
Graphics card LA, replacement	63 02 165	349.00	57

New replacement graphics card

Designation	REF.	EUR, excl. VAT	Pr. Gr.
Graphics card L_ (1GB), replacement	63 06 235	349.00	57

New TiBase products

Since 1 June 2010, new TiBase products have been available for four additional implant systems (see table). These new TiBases can be selected directly in the inLab 3D software V3.80.

TiBase		Compatible with			
Designation	REF.	Implant system		Size	Block
B C 3.4	63 08 048	Biomet 3i [®]	Certain [®]	3.4 mm	inCoris ZI
B C 4.1	63 08 097		Certain [®]	4.1 mm	inCoris ZI meso L
B C 5.0	63 08 121		Certain [®]	5.0 mm	inCoris ZI meso L
S BL 3.3	63 08 154	Straumann [®]	Bone Level [®] NC	3.3 mm	inCoris ZI meso L
S BL 4.1	63 08 337		Bone Level [®] RC	4.1 mm	inCoris ZI meso L
NB NA 4.5	63 08 188	Nobel Biocare [®]	Nobel Active [®]	4.5 mm	inCoris ZI meso L
NB NA 5.0	63 08 253		Nobel Active [®]	5.0 mm	inCoris ZI meso L
MI 3.5/5.0	63 08 295	Medentika [®] Implant	M-Implant	3.5/5.0 mm	inCoris ZI meso L

A precondition for selecting these TiBases for design purposes is the installation of inLab 3D **V3.80**. The following details apply to all TiBase products:

Designation	EUR, excl. VAT	Pr. Gr.
TiBase ~	65.00	68

Straumann CARES material pack for inLab V3.65

Since 1 June 2010, a new material pack for Straumann CARES customers has been available in the Sirona inLab download area. Following the installation of this material pack, the inLab software V3.65 provides full support for the Straumann Bone Level and Straumann Tissue Level prosthetic platforms.

inLab 3D: software upgrade V3.80

The new Version V3.80 opens up new possibilities for inLab users (see below). inLab 3D V3.80 can be installed under Windows Vista 32 bit, as well as under Windows 7 64 bit.



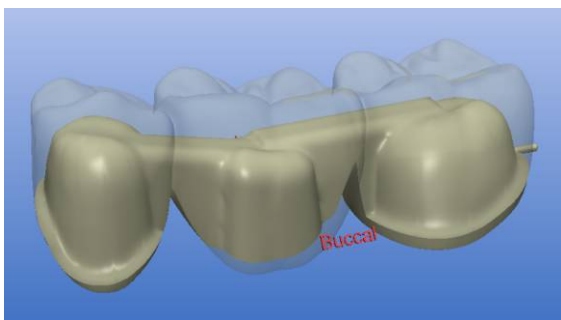
New Biogeneric design modes

The new Biogeneric design modes are now available for crowns, veneers and anatomically sized bridges, as well as for inlays and onlays. The “Biogeneric” design mode is especially useful when a tooth adjacent to the preparation is available for biogeneric analysis purposes. If this is not the case, the “Biogeneric Reference” mode enables the user to choose any tooth of the same type (i.e. posterior tooth or anterior tooth) for analysis purposes. In contrast to the CEREC 3D V3.80 software, the “Biogeneric” design mode also allows the user to choose a preferred tooth morphology. This is useful with regard to edentulous jaws and in cases where a suitable reference tooth is not available.

Merz Artegral: The Merz Artegral database is no longer available in the new software version. However, the Merz Artegral blocks can still be selected in the block selection menu and milled on the MC XL.

New “Multilayer” design mode

For the first time, dental technicians are now in a position to produce anatomically sized permanent bridges exclusively with the aid of CAD/CAM technology. In the new “Multilayer” design mode, the user begins by designing an anatomically sized bridge. This design can then be automatically separated into two components: the framework core; and the facing. Allowance is made for the minimum wall thicknesses of the materials. In addition, the software ensures that the two components fit together perfectly (i.e. without undercuts) after milling and sintering have been carried out.



Multilayer bridge with an automatically generated framework core

Various materials can be used for the production of the two components. Depending on the chosen materials, the two components can be joined together in various different ways. The material manufacturers' instructions provide detailed information about the various joining techniques.

Optimized “Correlation“ design mode

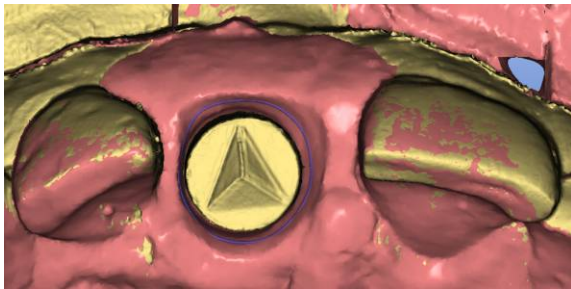
In the “Correlation” design mode, the new inLab 3D software generates morphologically plausible reconstructions of those areas which cannot be copied.

Integration of inEos Blue

The inEos Blue scanner can now be controlled directly via the new inLab software. All the functions of the inEos Blue operating software V3.70 have been fully integrated.

Integrated abutment software

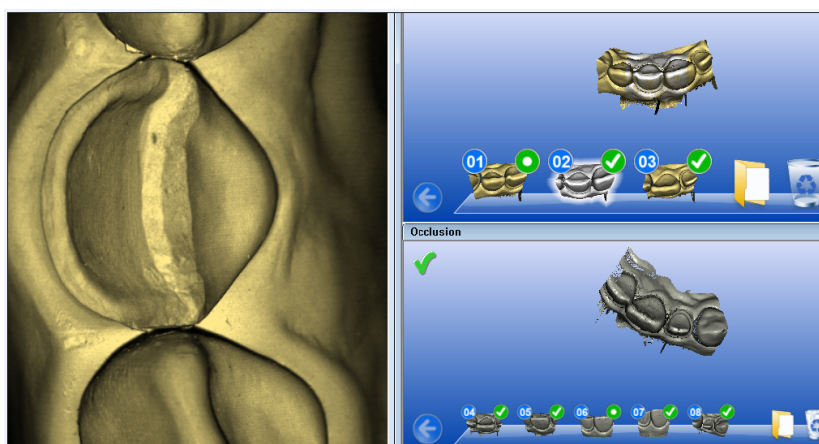
Compared with the previous version of InLab 3D, the previously separate abutment design functions have now been fully integrated. The anatomical prosthetic proposal is generated biogenetically – i.e. is extrapolated from an adjacent tooth. It is now possible to design abutments on the basis of scans acquired by the inEos Blue.



inEos Blue scan, including gum mask (shown here in red), for an abutment design

All images captured from an occlusal/incisal perspective

The anterior teeth and veneer preparations are now captured from an incisal perspective. It is no longer necessary to acquire images from the labial direction.



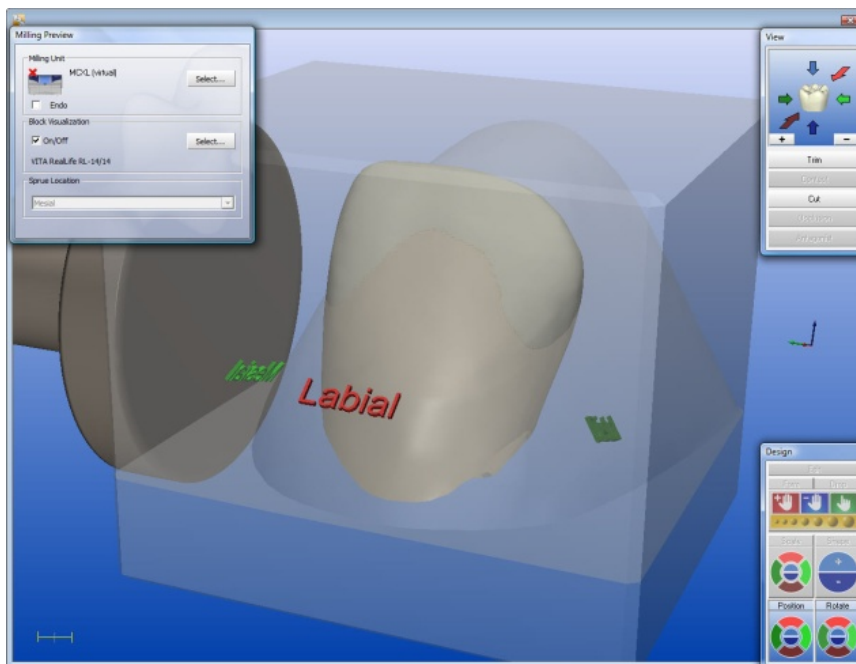
Orientation of images and model in the case of a veneer restoration

Thin veneers

The minimum thickness for veneers has been reduced to 300 µm. These restorations, however, have to be machined on the MC XL milling unit.

New materials

The following new materials are available: Vita RealLife polychromatic blocks (MC XL only) for aesthetic anterior restorations; and Ivoclar TelioCAD for temporary restorations. In the milling preview, the user can deploy the “Position” and “Rotation” tools in order to accurately monitor the dentine-enamel transition.



Positioning of the restoration in the milling preview

Intensity image when inputting the preparation margin

In contrast to V3.65, the user no longer has to toggle between the “Intensity” and “High Resolution” modes (CTRL+H followed by spacebar) when inputting the preparation margin. The available views are now activated simply by pressing the spacebar.

Sirona customer services

■ Sirona online service:

The Dealer Area and the Online Shop can be accessed via the Sirona website:

<http://partner.sirona.com/>

This provides a convenient way to order products, determine the status of your orders, obtain detailed technical information, and research parts/material numbers and prices.

Online Shop Hotline (for queries relating to the Online Shop):

Tel.: +49 (0) 62 51/16 -16 21 (German) -16 31 (English)
 -16 41 (French) -16 51 (Italian)
 -16 61 (Spanish)

Alternatively, you can send an e-mail to: onlineshop@sirona.com

■ Sirona Customer Service Centre

For information beyond the scope of our online service, you are welcome to contact our Customer Service Centre:

Telephone:

+49 (0) 62 51/16-16 16

Product service

E-mail: product.service@sirona.de

Fax: +49 (0)62 51/16-18 18

Technical support

Order service

E-mail: order.service@sirona.de

Fax: +49 (0)6251/16-17 17

Fax: +49 (0)6251/16-17 27

Product orders/correspondence

Spare parts

Returned goods service

E-mail: return.service@sirona.com

Fax: +49 (0)6251/16-17 37

Returned goods