



Commercial Refrigerator & Freezer Service Manual

**Sandwich Salad Unit
Under counter Refrigerator &
Freezer**

**Model No.: TUR-28SD
TUR-48SD
TST-28SD
TST-48SD
TUF-28SD
TUF-48SD**

TABLE OF CONTENTS

1. FEATURE CHART

- 1-1. FRONT VIEW / SIDE VIEW (TUR-28SD)
- 1-2. FRONT VIEW / SIDE VIEW (TUR-48SD)
- 1-3. FRONT VIEW / SIDE VIEW (TST-28SD)
- 1-4. FRONT VIEW / SIDE VIEW (TST-48SD)
- 1-5. FRONT VIEW / SIDE VIEW (TUF-28SD)
- 1-6. FRONT VIEW / SIDE VIEW (TUF-48SD)

2. WIRING DIAGRAM

- 2-1. TUR-28SD
- 2-2. TUR-48SD
- 2-3. TST-28SD
- 2-4. TST-48SD
- 2-5. TUF-28SD
- 2-6. TUF-48SD

3. PART DETAILS

- 3-1. COMPRESSOR COMPARTMENT
- 3-2. DOOR
- 3-3. REFRIGERATION COMPARTMENT

4. MAIN COMPONENTS

5. TEMPERATURE CONTROL INSTRUCTION

- 5-1. HOW TO USE THE TEMPERATURE CONTROL
- 5-2. FUNCTION TABLE

6. PART LIST

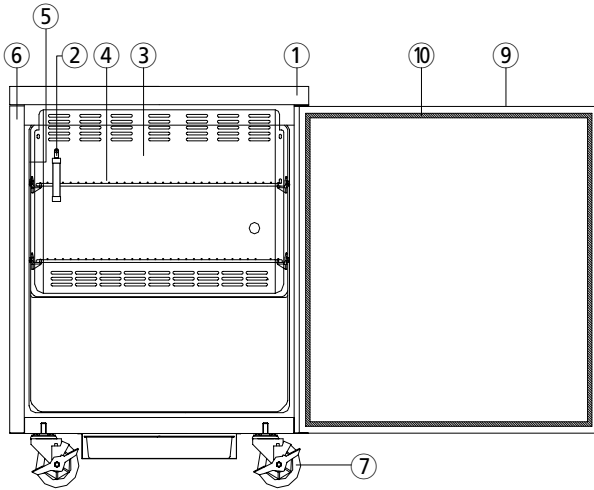
7. REPLACEMENT OF MAIN COMPONENTS

- 7-1. REPLACING DOOR
- 7-2. REFRIGERATION COMPARTMENT PARTS
- 7-3. COMPRESSOR COMPARTMENT PARTS
- 7-4. TERMINAL BOX PARTS
- 7-5. REPLACE DOOR SWITCH AND POWER SWITCH

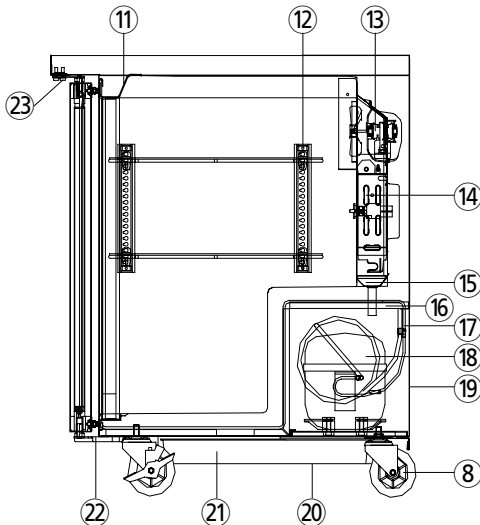
1. FEATURE CHART

1-1. FRONT VIEW/SIDE VIEW (TUR-28SD)

FRONT VIEW



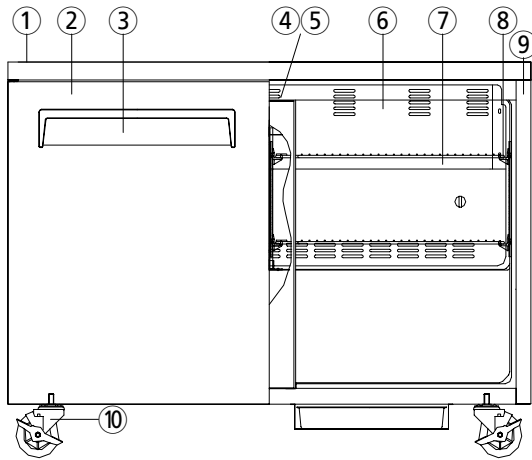
SIDE VIEW



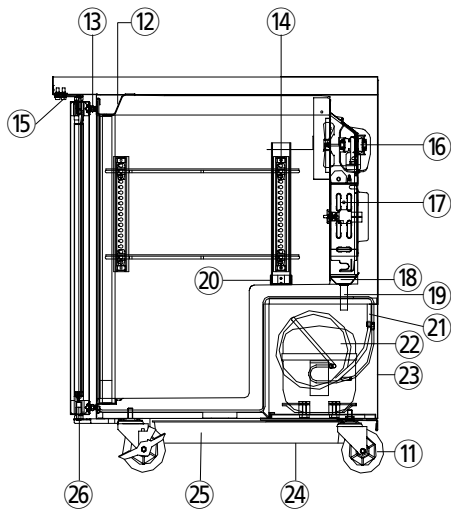
- 1 COUNTER TOP
- 2 THERMOMETER
- 3 LOUVER
- 4 SHELF
- 5 SHELF STANDARD
- 6 CABINET
- 7 CASTOR (with Brake)
- 8 CASTOR
- 9 DOOR
- 10 DOOR GASKET
- 11 LINER
- 12 SHELF CLIP
- 13 EVAPORATOR FAN MOTOR
- 14 EVAPORATOR COIL
- 15 EVAPORATOR DRAIN PAN
- 16 DRAIN HOSE
- 17 SUCTION LINE
- 18 COMPRESSOR
- 19 REAR GRILL
- 20 DRAIN PAN HOUSING
- 21 DRAIN PAN
- 22 DOOR HINGE BOTTOM
- 23 DOOR HINGE TOP

1-2. FRONT VIEW/SIDE VIEW (TUR-48SD)

FRONT VIEW



SIDE VIEW

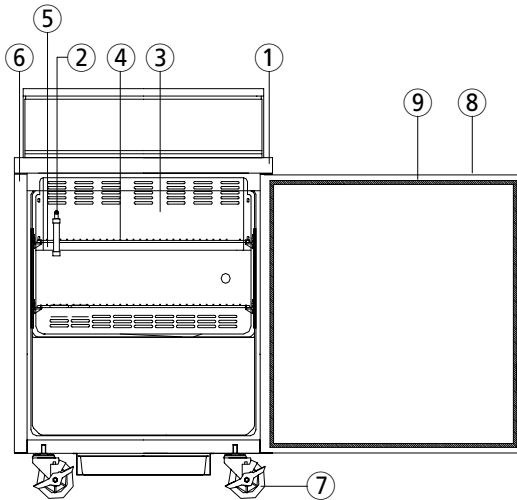


- 1 COUNTER TOP
- 2 DOOR
- 3 DOOR HANDLE
- 4 SUPPORTER MIDDLE (A)
- 5 SUPPORTER MIDDLE (B)
- 6 LOUVER
- 7 SHELF (R)
- 8 SHELF STANDARD
- 9 CABINET
- 10 CASTOR (with Brake)
- 11 CASTOR
- 12 LINER
- 13 DOOR GASKET
- 14 SHELF CLIP
- 15 DOOR HINGE TOP
- 16 EVAPORATOR FAN MOTOR
- 17 EVAPORATOR COIL
- 18 EVAPORATOR DRAIN PAN
- 19 DRAIN HOSE
- 20 SHELF STANDARD RETAINER
- 21 SUCTION LINE
- 22 COMPRESSOR
- 23 REAR GRILL
- 24 DRAIN PAN HOUSING
- 25 DRAIN PAN
- 26 DOOR HINGE BOTTOM

FEATURE CHART

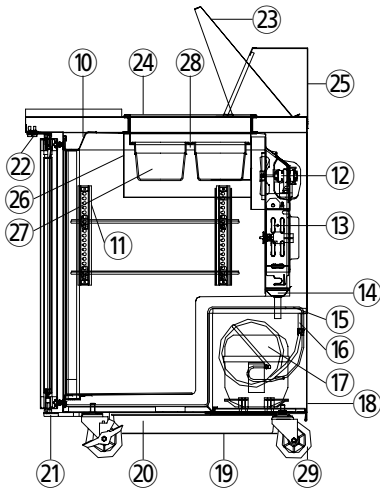
1-3. FRONT VIEW/SIDE VIEW (TST-28SD)

FRONT VIEW



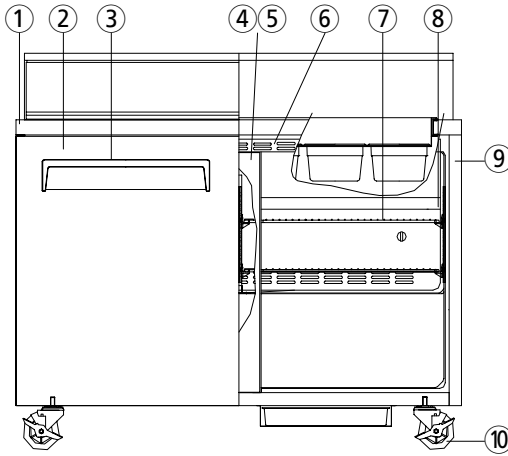
- 1 COUNTER TOP
- 2 THERMOMETER
- 3 LOUVER
- 4 SHELF
- 5 SHELF STANDARD
- 6 CABINET
- 7 CASTOR (with Brake)
- 8 DOOR
- 9 DOOR GASKET
- 10 LINER
- 11 SHELF CLIP
- 12 EVAPORATOR FAN MOTOR
- 13 EVAPORATOR COIL
- 14 EVAPORATOR DRAIN PAN
- 15 DRAIN HOSE
- 16 SUCTION LINE
- 17 COMPRESSOR
- 18 REAR GRILL
- 19 DRAIN PAN HOUSING
- 20 DRAIN PAN
- 21 DOOR HINGE BOTTOM
- 22 DOOR HINGE TOP
- 23 HOOD LID
- 24 PAN SUPPORTER
- 25 HOOD
- 26 PAN DUCT
- 27 PAN
- 28 PAN SUPPORT BAR
- 29 CASTOR

SIDE VIEW

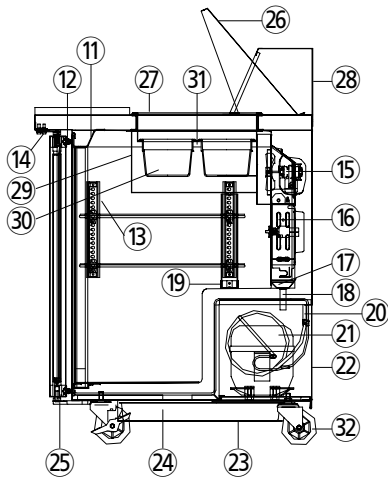


1-4. FRONT VIEW/SIDE VIEW (TST-48SD)

FRONT VIEW



SIDE VIEW

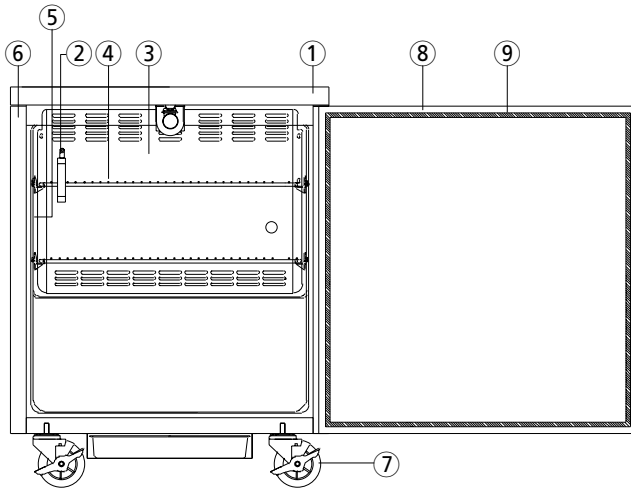


- 1 COUNTER TOP
- 2 DOOR
- 3 DOOR HANDLE
- 4 SUPPORTER MIDDLE (A)
- 5 SUPPORTER MIDDLE (B)
- 6 LOUVER
- 7 SHELF (RIGHT)
- 8 SHELF STANDARD
- 9 CABINET
- 10 CASTOR (with Brake)
- 11 LINER
- 12 DOOR GASKET
- 13 SHELF CLIP
- 14 DOOR HINGE TOP
- 15 EVAPORATOR FAN MOTOR
- 16 EVAPORATOR COIL
- 17 EVAPORATOR DRAIN PAN
- 18 DRAIN HOSE
- 19 SHELF STANDARD RETAINER
- 20 SUCTION LINE
- 21 COMPRESSOR
- 22 REAR GRILL
- 23 DRAIN PAN HOUSING
- 24 DRAIN PAN
- 25 DOOR HINGE BOTTOM
- 26 HOOD LID
- 27 PAN SUPPORTER
- 28 HOOD
- 29 PAN DUCT
- 30 PAN
- 31 PAN SUPPORT BAR
- 32 CASTOR

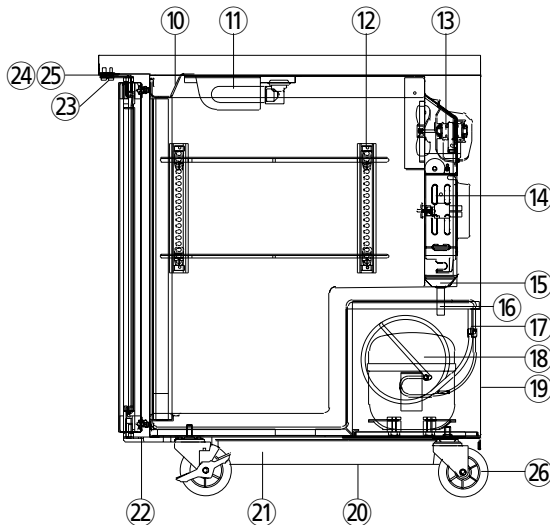
FEATURE CHART

1-5. FRONT VIEW/SIDE VIEW (TUF-28SD)

FRONT VIEW



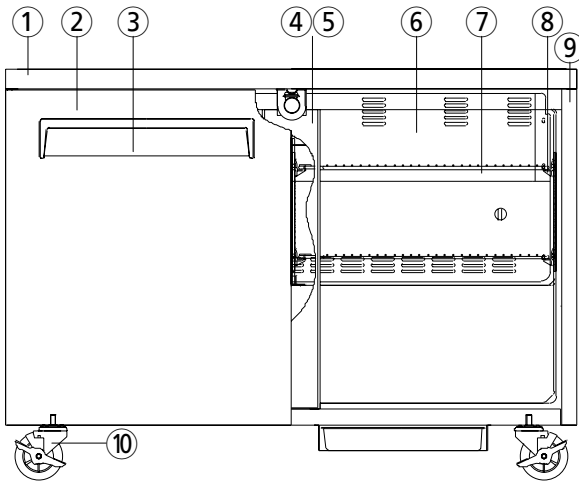
SIDE VIEW



- 1 COUNTER TOP
- 2 THERMOMETER
- 3 LOUVER
- 4 SHELF
- 5 SHELF STANDARD
- 6 CABINET
- 7 CASTOR (with Brake)
- 8 DOOR
- 9 DOOR GASKET
- 10 LINER
- 11 LAMP
- 12 SHELF CLIP
- 13 EVAPORATOR FAN MOTOR
- 14 EVAPORATOR COIL
- 15 EVAPORATOR DRAIN PAN
- 16 DRAIN HOSE
- 17 SUCTION LINE
- 18 COMPRESSOR
- 19 REAR GRILL
- 20 DRAIN PAN HOUSING
- 21 DRAIN PAN
- 22 DOOR HINGE BOTTOM
- 23 DOOR HINGE TOP
- 24 DOOR SWITCH
- 25 POWER SWITCH
- 26 CASTOR

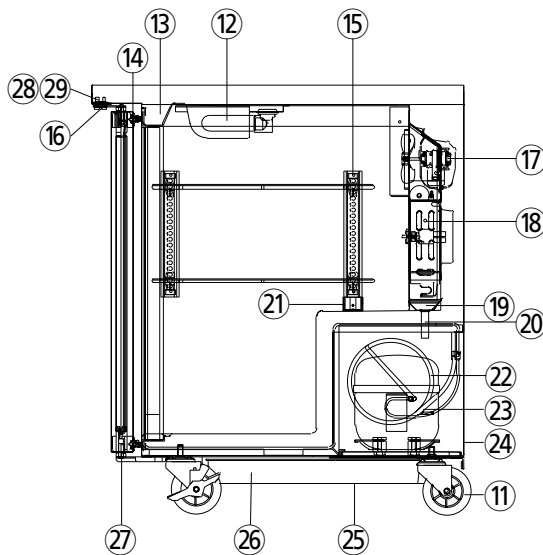
1-6. FRONT VIEW/SIDE VIEW (TUF-48SD)

FRONT VIEW



- 1 COUNTER TOP
- 2 DOOR
- 3 DOOR HANDLE
- 4 SUPPORTER MIDDLE (A)
- 5 SUPPORTER MIDDLE (B)
- 6 LOUVER
- 7 SHELF (R)
- 8 SHELF STANDARD
- 9 CABINET
- 10 CASTOR (with Brake)

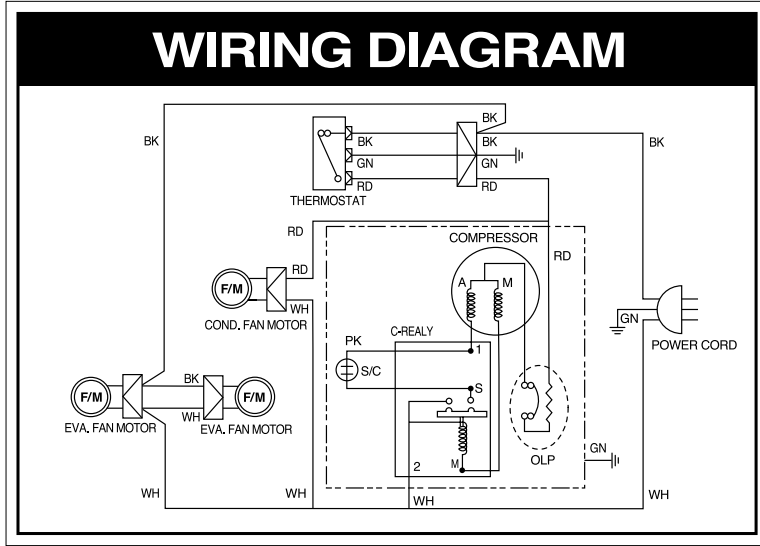
SIDE VIEW



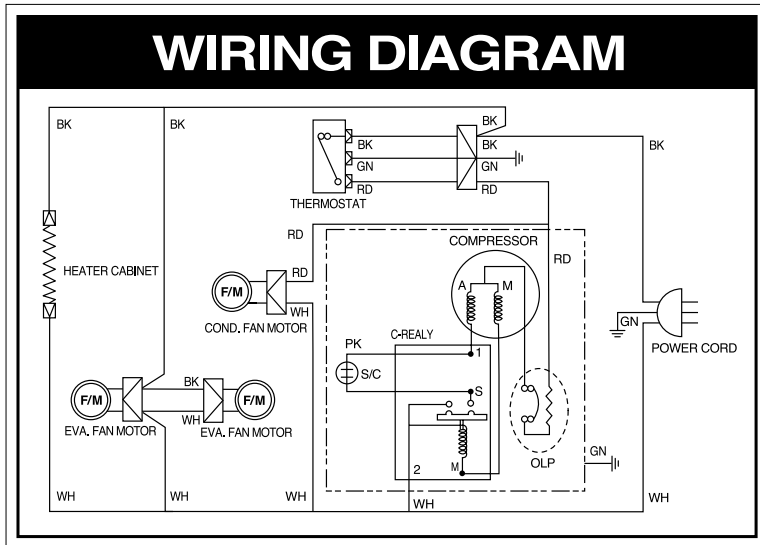
- 11 CASTOR
- 12 LAMP
- 13 LINER
- 14 DOOR GASKET
- 15 SHELF CLIP
- 16 DOOR HINGE TOP
- 17 EVAPORATOR FAN MOTOR
- 18 EVAPORATOR COIL
- 19 EVAPORATOR DRAIN PAN
- 20 DRAIN HOSE
- 21 SHELF STANDARD RETAINER
- 22 SUCTION LINE
- 23 COMPRESSOR
- 24 REAR GRILL
- 25 DRAIN PAN HOUSING
- 26 DRAIN PAN
- 27 DOOR HINGE BOTTOM
- 28 DOOR SWITCH
- 29 POWER SWITCH

2. WIRING DIAGRAMS

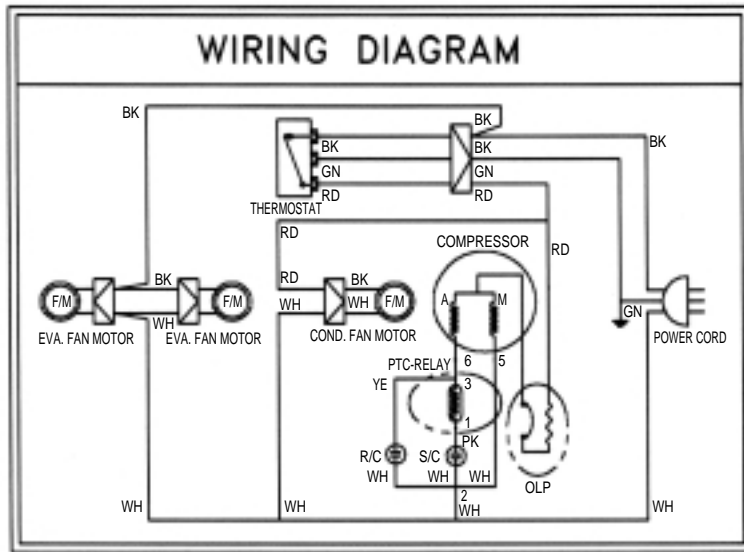
2-1. TUR-28SD



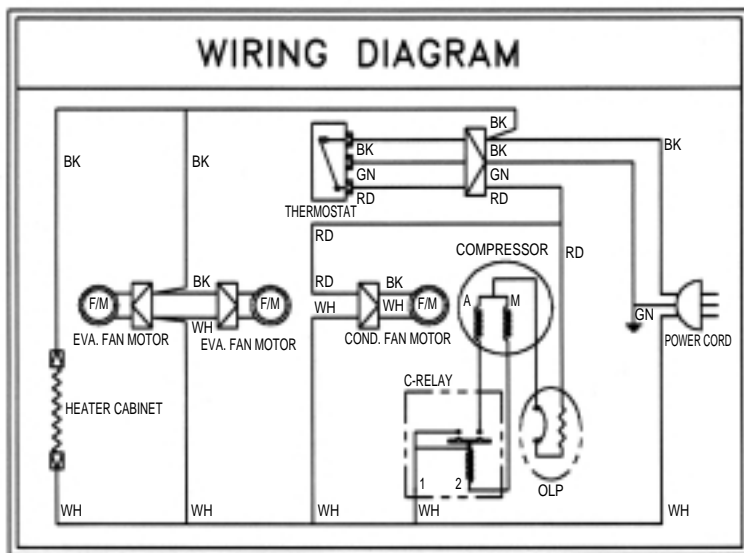
2-2. TUR-48SD



2-3. TST-28SD

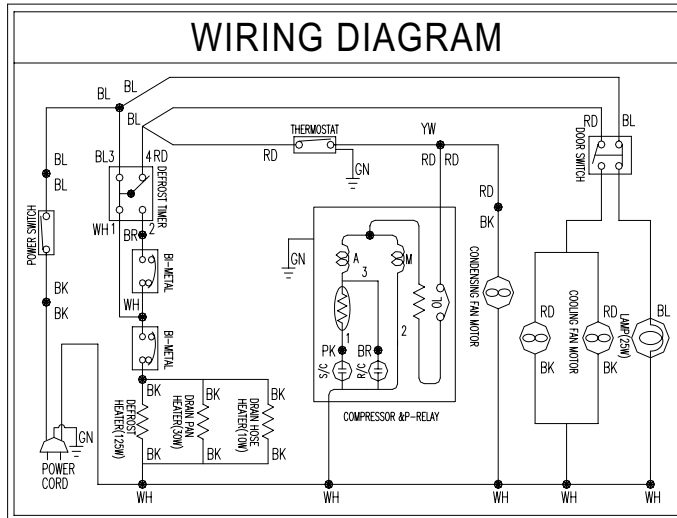


2-4. TST-48SD

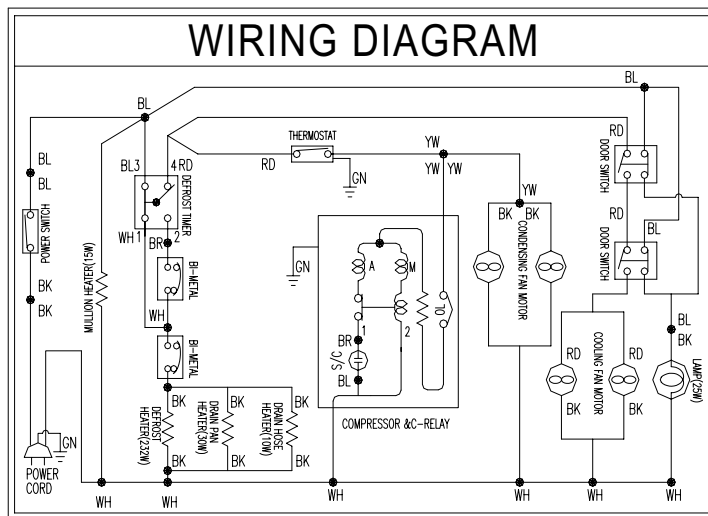


WIRING DIAGRAMS

2-5. TUF-28SD

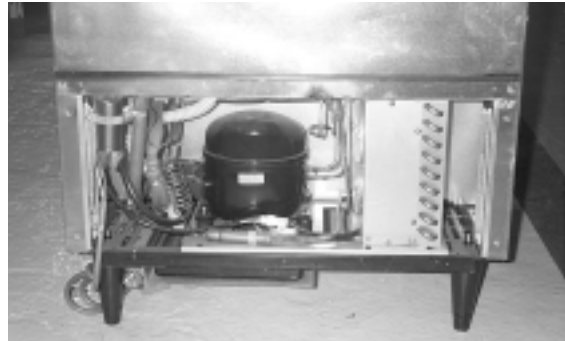
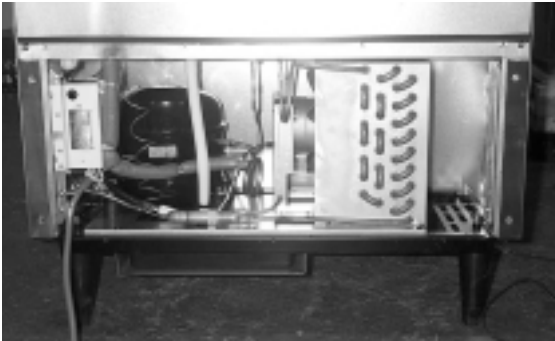


2-6. TUF-48SD

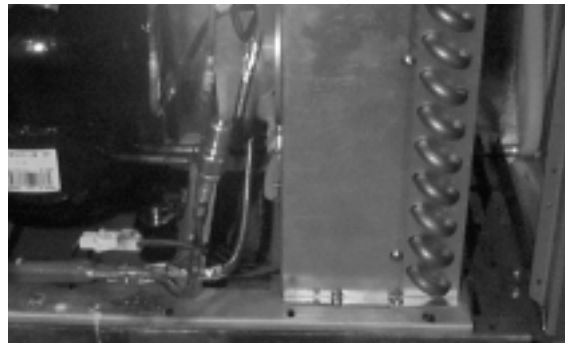
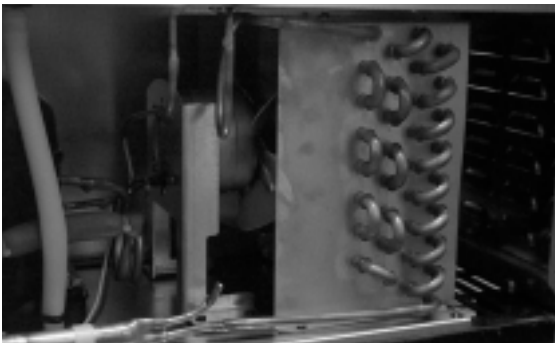


3. PART DETAILS

3-1. COMPRESSOR COMPARTMENT



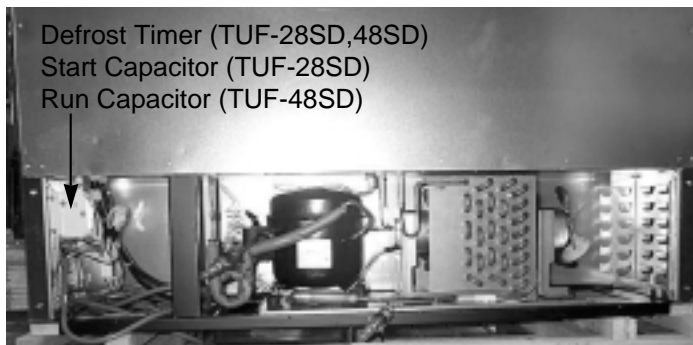
CONDENSING UNIT ASSEMBLY



CONDENSER FAN MOTOR ASSEMBLY

TST-28SD,48SD

TUF-28SD



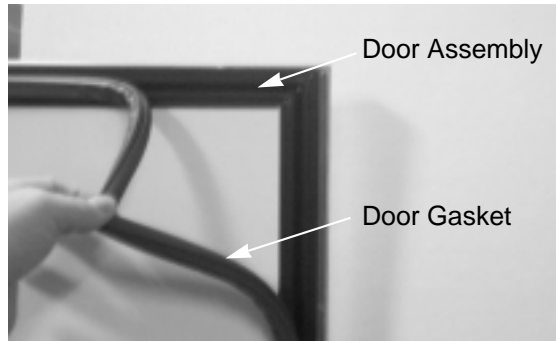
Defrost Timer (TUF-28SD,48SD)
Start Capacitor (TUF-28SD)
Run Capacitor (TUF-48SD)

CONDENSING UNIT ASSEMBLY

TUF-48SD

3. PART DETAILS

3-2. DOOR

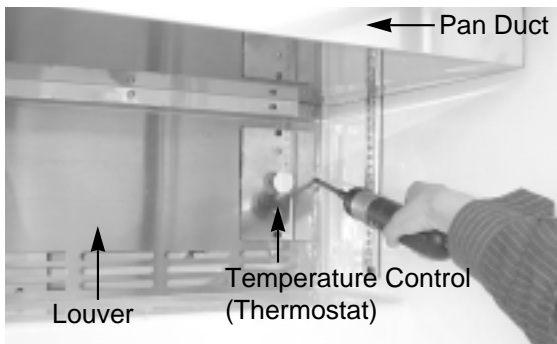


Door Assembly

Door Gasket

DOOR GASKET

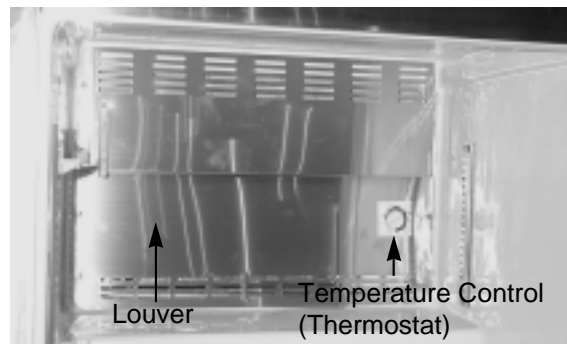
3-3. REFRIGERATION COMPARTMENT



Pan Duct

Louver

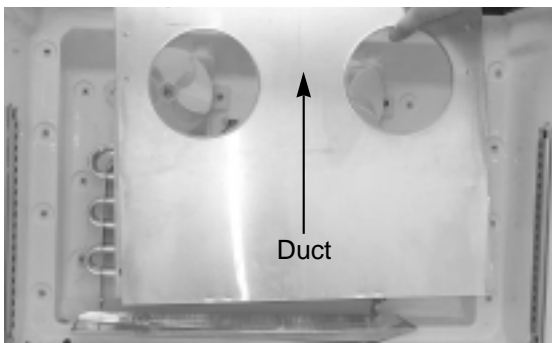
Temperature Control (Thermostat)



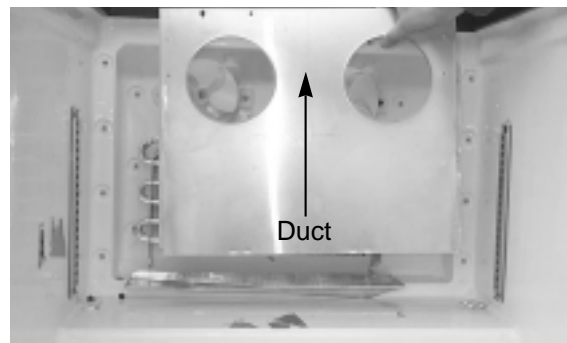
Louver

Temperature Control (Thermostat)

LOUVER



Duct

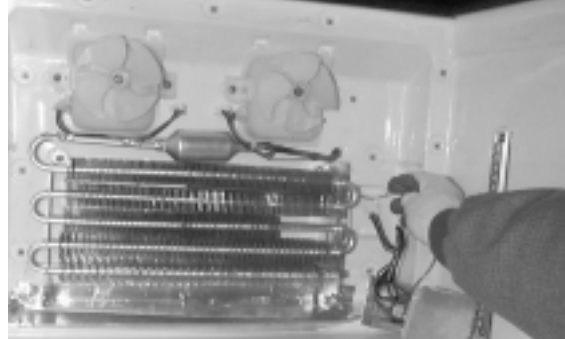
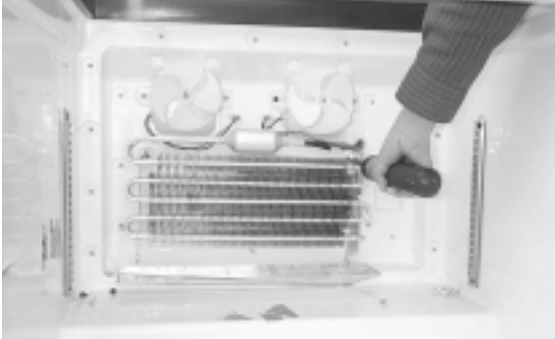


Duct

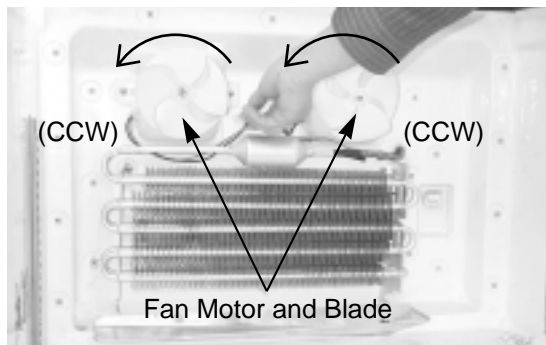
DUCT

TST-28SD,48SD

**TUR-28SD,48SD
TUF-28SD,48SD**



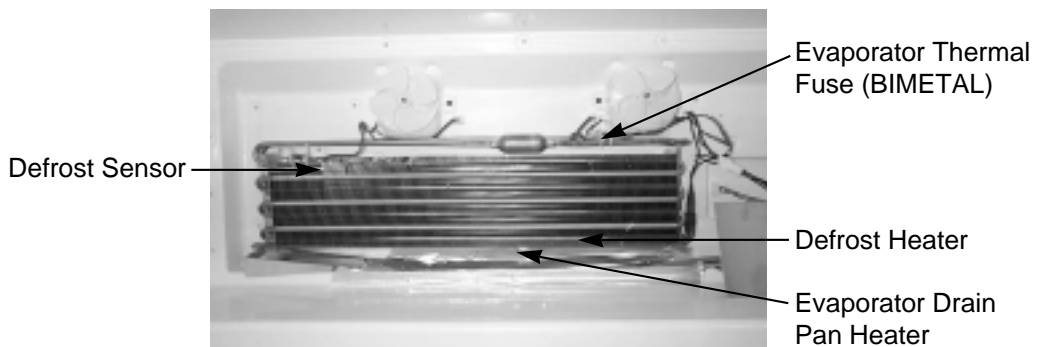
EVAPORATOR COIL



EVAPORATOR COIL FAN MOTOR

TST-28SD,48SD

TUF-28SD,48SD



FREEZER EVAPORATOR COIL

TUF-28SD,48SD

PART DETAILS



**TST-28SD,48SD
TUF-28SD,48SD**



TUR-28SD,48SD

THERMOSTAT

4. MAIN COMPONENTS

1. COMPRESSOR

MODEL	PART NAME	PART NO.	HORSE POWER	CAPACITY	TYPE OF MOTOR	INPUT	MAKER
TUR-28SD TUR-48SD	HCH23YE-1	3957223G10	1/4 HP	773 BTU/h (195 Kcal/h)	CSIR	-	DAEWOO
TST-28SD TUF-28SD	HBL27YE-1	3952127G10	1/3 HP	896 BTU/h (226 Kcal/h)	CSR	-	DAEWOO
TST-48SD	SK6A1C-H2Y	3020014540	1/3 HP	4,288 BTU/h (1,080 Kcal/h)	RSIR	-	SAMSUNG
TUF-48SD	AEZ2415Z	30200N4400	1/3 HP	1,459 BTU/h (368 Kcal/h)	CSIR	-	TECUMSEH (FRANCE)

2. COMPRESSOR RELAY, OVERLOAD

MODEL	RELAY	PART NO.	OVERLOAD	PART NO.	MAKER	NOTE
TUR-28SD TUR-48	C-090C	3817910400	4TM-783RHB	3817908600	DAEWOO	
TST-28 TUF-28	S068	3017906900	4TM-783SHB	3817910600	DAEWOO	
TST-48	MTRP0052-02	-	4TM-811XHB	-	SAMSUNG	
TUF-48	3ARR12KP(+479)		MRP24A1K	-	TECUMSEH(FRANCE)	Comp.Assembly

3. COMPRESSOR CAPACITOR

MODEL	STARTING	PART NO.	RUNNING	PART NO.	MAKER	NOTE
TUR-28SD TUR-48SD	200V 100 μ F	401RD35050	-	-	DAEWOO	Comp.Assembly
TST-28SD TUF-28SD	200V 100 μ F	401RD35050	230V 10 μ F	100EL15130	DAEWOO	
TST-48SD	-	-	-	-	-	
TUF-48SD	160V 250 μ F	-	-	-	TECUMSEH(FRANCE)	Comp.Assembly

4. CONDENSER FAN MOTOR

MODEL	PART NAME	PART NO.	POLE	INPUT	TYPE	BLADE (NUMBER)	MAKER
TUR-28SD TUR-48SD TST-28SD TST-48SD TUF-28SD TUF-48SD	IS-4420DWSN-2A	3963328120	4P	47W	Shaded Pole Induction	AL 5	SUNGSHIN

MAIN COMPONENTS

5. EVAPORATOR FAN MOTOR

MODEL	PART NAME	PART NO.	POLE	INPUT	TYPE	BLADE (NUMBER)	MAKER
TUR-28SD TUR-48SD TST-28SD TST-48SD TUF-28SD	DAI6152DEB	3963228120	2P		Shaded Pole Induction	NA-66 4	DAEYOUNG

6. DEFROST HEATER

MODEL	PART NAME	PART NO.	SPEC.	MAKER
TUF-28SD TUF-48SD	SHEATHED HEATER	30228M2002 30228M2102	300W 450W	SANGDO

7. LAMP BULB

MODEL	PART NAME	PART NO.	NUMBER	WATTS	CURRENT	TYPE	MAKER
TUF-28SD TUF-48SD	120V/60Hz	302236L0100	1	25W	-	-	-

8. POWER SWITCH (ROCKER SWITCH)

MODEL	TYPE	PART NO.	RATING	MAKER
TUF-28SD TUF-48SD	POWER SWITCH	30281A0600	125V/6A	DAESUNG

9. TEMPERATURE CONTROL (THERMOSTAT)

MODEL	PART NAME	PART NO.	SPEC.	MAKER
TUR-28SD TUR-48SD	GNF-105D-01A	30283M0300	NORMAL	SHINHAN
TST-28SD	GNF-105D-04A	30283M0400	NORMAL	SHINHAN
TST-48SD	GNF-105D-01A	30283M0500	NORMAL	SHINHAN
TUF-28SD TUF-48SD	GNF-106D-06A	30283D0700	NORMAL	SHINHAN

10. DEFROST TIMER

MODEL	TYPE	PART NO.	DEFROST CYCLE	MAKER
TUF-28SD TUF-48SD	TMDE807UB9	30281M0210	8 HOURS	SCD

11. DEFROST SENSOR

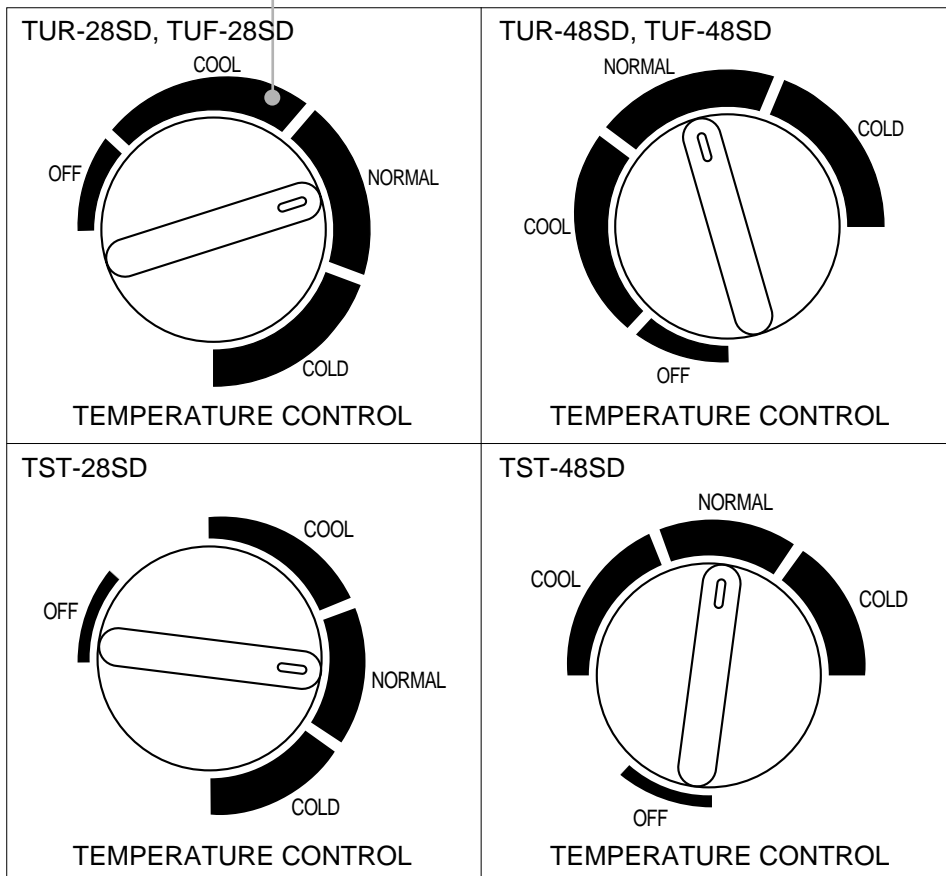
MODEL	TYPE	PART NO.	DEFROST CYCLE	MAKER
TUF-28SD TUF-48SD	PST3A	3018121300	OPEN 48.2 ± 6°F	PACIFIC

5. TEMPERATURE CONTROL INSTRUCTIONS

5-1. HOW TO USE THE TEMPERATURE CONTROL

- Indicates temperature level setting.

- Temperature can be controlled by the user.
- Factory setting is at 'NORMAL'. Settings can be changed by Dial Knob.



CONTROLLER INSTRUCTIONS

5-2. FUNCTION TABLE

No	Function	Controlled Part	Description																		
1-1	Temperature Control (GNF-105D-01A) Model: TUR-28SD TUR-48SD TST-48SD	Compressor Evap. Fan Motor Cond. Fan Motor	<p>1. The temperature can be changed by turning the dial knob. 2. Compressor is automatically turned on and off by thermostat.</p> <p>■ Cut in and out temperature chart.</p> <table border="1"> <thead> <tr> <th>No.</th> <th>Cool</th> <th>Normal</th> <th>Cold</th> </tr> </thead> <tbody> <tr> <td>Cut in</td> <td>41</td> <td>38.3</td> <td>36.5</td> </tr> <tr> <td>Cut Out</td> <td>19.4</td> <td>15.8</td> <td>13.1</td> </tr> </tbody> </table>	No.	Cool	Normal	Cold	Cut in	41	38.3	36.5	Cut Out	19.4	15.8	13.1						
No.	Cool	Normal	Cold																		
Cut in	41	38.3	36.5																		
Cut Out	19.4	15.8	13.1																		
1-2	Temperature Control (GNF-105D-04A) Model: TST-28SD	Compressor Evap. Fan Motor Cond. Fan Motor	<p>1. The temperature can be changed by turning the dial knob. 2. Compressor is automatically turned on and off by thermostat.</p> <p>■ Cut in and out temperature chart.</p> <table border="1"> <thead> <tr> <th>No.</th> <th>Cool</th> <th>Normal</th> <th>Cold</th> </tr> </thead> <tbody> <tr> <td>Cut in</td> <td>41</td> <td>38.3</td> <td>36.5</td> </tr> <tr> <td>Cut Out</td> <td>16.7</td> <td>13.1</td> <td>9.5</td> </tr> </tbody> </table>	No.	Cool	Normal	Cold	Cut in	41	38.3	36.5	Cut Out	16.7	13.1	9.5						
No.	Cool	Normal	Cold																		
Cut in	41	38.3	36.5																		
Cut Out	16.7	13.1	9.5																		
1-3	Temperature Control (GNF-106D-06A) Model: TUF-28SD,48SD	Compressor Cond. Fan Motor	<p>1. The temperature can be changed by turning the dial knob. 2. Compressor is automatically turned on and off by thermostat.</p> <p>■ Cut in and out temperature chart.</p> <table border="1"> <thead> <tr> <th>No.</th> <th>Cool</th> <th>Normal</th> <th>Cold</th> </tr> </thead> <tbody> <tr> <td>Cut in</td> <td>3°F</td> <td>-1°F</td> <td>-3°F</td> </tr> <tr> <td>Cut Out</td> <td>-9.5°F</td> <td>-13°F</td> <td>-15°F</td> </tr> </tbody> </table> <p>3. When the door opened, the evaporator fan motor stop and lamp turn on.</p>	No.	Cool	Normal	Cold	Cut in	3°F	-1°F	-3°F	Cut Out	-9.5°F	-13°F	-15°F						
No.	Cool	Normal	Cold																		
Cut in	3°F	-1°F	-3°F																		
Cut Out	-9.5°F	-13°F	-15°F																		
2	Defrost Function (Off Cycle) Model: TUR-28SD TUR-48SD TST-28SD TST-48SD	Compressor Evap. Fan Motor Cond. Fan Motor	<p>1. Defrost function is not in this model. 2. When the compressor is turned off, the 'natural defrost function' is started.</p> <p>■ Natural defrost step</p> <table border="1"> <thead> <tr> <th>Comp</th> <th>EVA.-fan</th> <th>CON-fan</th> </tr> </thead> <tbody> <tr> <td>Off</td> <td>On</td> <td>Off</td> </tr> </tbody> </table>	Comp	EVA.-fan	CON-fan	Off	On	Off												
Comp	EVA.-fan	CON-fan																			
Off	On	Off																			
3	Defrost Function Model: TUF-28SD TUF-48SD	Compressor Evap. Fan Motor Cond. Fan Motor	<p>1. If it reaches defrost cycle time, the defrost heater comes on. 2. Defrost function terminates when D-sensor's temperature gets to above 48.2°F (9°C). 3. Defrost step</p> <table border="1"> <thead> <tr> <th></th> <th>Defrost</th> <th>Pause</th> </tr> </thead> <tbody> <tr> <td>Comp</td> <td>Off</td> <td>Off</td> </tr> <tr> <td>F-fan</td> <td>Off</td> <td>Off</td> </tr> <tr> <td>C-fan</td> <td>Off</td> <td>Off</td> </tr> <tr> <td>Heater</td> <td>On</td> <td>Off</td> </tr> <tr> <td>Max time</td> <td>-</td> <td>9 min</td> </tr> </tbody> </table>		Defrost	Pause	Comp	Off	Off	F-fan	Off	Off	C-fan	Off	Off	Heater	On	Off	Max time	-	9 min
	Defrost	Pause																			
Comp	Off	Off																			
F-fan	Off	Off																			
C-fan	Off	Off																			
Heater	On	Off																			
Max time	-	9 min																			

6. PARTS LIST FOR SALAD & UNDERCOUNTER MODEL

Part name	Part Code	Description	Model					
			TST-28	TST-48	TUR-28	TUR-48	TUF-28	TUF-48
Cabinet								
CABINET ASSEMBLY	30200M0300		1				1	
CABINET ASSEMBLY	30203M0100			1				1
CABINET ASSEMBLY	30200M3200				1			
CABINET ASSEMBLY	30200M3300					1		
CASTOR	30265L0300	WITH BRAKE	2	2	2	2	2	2
CASTOR	30265L0400		2	2	2	2	2	2
Door								
DOOR ASSEMBLY	30200M1100	STS+URT	1		1		1	
DOOR ASSEMBLY(LEFT)	30200M1000	STS+URT		1		1		1
DOOR ASSEMBLY(RIGHT)	30200M1100	STS+URT		1		1		1
DOOR GASKET	30223M0100	PVC-S		2		2		2
DOOR GASKET	30223M0200	PVC-S	1		1		1	
BUSHING BOTTOM	30207H1000	NA-66	2	4	2	4	2	4
DOOR HINGE TOP ASSEMBLY(L)	30229M0100	STS304		1		1		1
DOOR HINGE TOP ASSEMBLY(R)	30229M0200	STS304	1	1	1	1	1	1
DOOR HINGE BOTTOM ASSEMBLY(L)	30229M0300	STS304		1		1		1
DOOR HINGE BOTTOM ASSEMBLY(R)	30229M0400	STS304	1	1	1	1	1	1
DOOR HINGE SPRING	30251M0100	HSW-3 / ø 0.102" (Diameter)	1	2	1	2	1	2
COMPRESSOR COMPARTMENT								
CONDENSER COIL	30200M7200	CU	1					
CONDENSER COIL	30200M7300	CU		1				1
CONDENSER COIL	30200M3100	CU			1	1	1	
SUCTION LINE	30200M7000	CU	1					
SUCTION LINE	30200M7100	CU		1				
SUCTION LINE	30266M1200	CU				1		
SUCTION LINE	30244M3001	CU			1		1	
SUCTION LINE	30224M3101	CU						1
COMPRESSOR BASE	30203M3302						1	
COMPRESSOR BASE	30203M1800							1
COMPRESSOR BASE	30203M1010	SBHG / 0.063"(Thickness)				1		
COMPRESSOR BASE	30203M1610	SBHG / 0.063"(Thickness)	1					
COMPRESSOR BASE	30203M1710	SBHG / 0.063" (Thickness)		1				
COMPRESSOR RUN CAPACITOR	400EL15130	230V/10µF	1				1	

PARTS LIST FOR SALAD & UNDERCOUNTER MODEL

Part name	Part Code	Description	Model					
			TST-28	TST-48	TUR-28	TUR-48	TUF-28	TUF-48
COMPRESSOR START CAPACITOR	401RD35050	230V/100µF	1		1	1	1	
DRAIN PAN	30211A0202	HIPS	1	1	1	1	1	1
CONDENSER FAN MOTOR HARNESS	30227M1610		1		1			
CONDENSER FAN MOTOR HARNESS	30227M1710			1		1		
CONDENSER FAN MOTOR BRACKET	30206M0100	SPG / 0.039" (Thickness)			4	4		
COMPRESS CUSHION RUBBER	4034E29060	NR	4	4	4	4	4	4
COMPRESSOR	3020014540	SK6A1C-H2Y		1				
COMPRESSOR	3952127G10	HBL27YE-1	1				1	
COMPRESSOR	3957223G10	HCH23YE-1-N			1	1		
COMPRESSOR	30200N4400	AEZ2415Z						1
POWER CORD	30213A1001	125V/15A	1	1	1	1	1	1
REAR GRILL	30214M3700	SWRM-B / ø 0.079" (Diameter)	1		1		1	
REAR GRILL	30214M3800	SWRM-B / ø 0.079" (Diameter)		1		1		1
COMPRESSOR DRYER	30236M0200	XH-9 / 30g					1	1
COMPRESSOR DRYER	30268M0200	XH-9 / 30g	1	1	1	1		
DOOR GASKET BASE	30222M0900	PVC-S	1		1		1	
DOOR GASKET BASE	30222M1000	PVC-S		1		1		1
DRAIN PAN HOUSING	30225M0800	SBHG / 0.039" (Thickness)	1	1			1	
DRAIN PAN HOUSING	30225M0500	SBHG / 0.039" (Thickness)			1	1		1
DRAIN HOSE	3023200200	PVC-S / 15.75"	1	1			1	
DRAIN HOSE	30232M0210	PVC-S			1	1		1
CONDENSER FAN MOTOR	3963328120	4420DSN-2A	1	1	1	1	1	1
CONDENSER FAN BLADE	30218F0200	AL / ø 6.890" (Diameter)	1	1	1	1	1	2
CONNECTING PIPE	30244A0501	DUCT1		1				
CAPILIARY TUBE(B)	30266M1000	DUCT1		1				
CONNECTING PIPE (HOT PIPE AND COMPRESSOR)	30266M1200	DUCT1	1			1		
CONNECTING PIPE (HOT PIPE AND COMPRESSOR)	30266M1300	DUCT1		1				
CONNECTING PIPE (SUCTION(B) AND COMPRESSOR)	30266M3000	DUCT1			1		1	
CONNECTING PIPE (COMPRESSOR AND CONDENSER)	30266M3403	DUCT1			1	1	1	1
CONNECTING PIPE (HOT PIPE AND CONDENSER)	30266M0600	DUCT1			1	1		
CONNECTING PIPE (HOT PIPE AND CONDENSER)	30244M1600	DUCT1	1	1				

PARTS LIST FOR SALAD & UNDERCOUNTER MODEL

Part name	Part Code	Description	Model					
			TST-28	TST-48	TUR-28	TUR-48	TUF-28	TUF-48
THERMO-SENSER INSERTING TUBE	30244M1901	DUCT1	1	1	1	1		
COMPRESSOR HARNESS ASSEMBLY	30227M1610	783RHBZZ-52,S090	1		1			
COMPRESSOR HARNESS ASSEMBLY	30227M1710	783RHBZZ-52,S090		1		1		
COMPRESSOR HARNESS ASSEMBLY	30227M2302	Including Harness					1	
COMPRESSOR HARNESS ASSEMBLY	30227M2401	Including Harness						1
REFRIGERATION COMPARTMENT								
CUTTING BOARD	30241M0033	LD-PE / 0.49" (Thickness)	1					
CUTTING BOARD	30241M0043	LD-PE / 0.49" (Thickness)		1				
MULLION HEATER	30228M0300	15W		1		1		1
CUSHION SPACER	3021500500	NR	2	2	2	2	2	2
DUCT	30269M0103	AL / 0.024" (Thickness)			1			
DUCT	30269M0303	AL / 0.024" (Thickness)				1		
DUCT	30269M0604	AL / 0.024" (Thickness)	1				1	
DUCT	30269M0702	AL / 0.024" (Thickness)		1				
DUCT	30269M0800	AL / 0.024" (Thickness)						1
PAN DUCT	30269M0402	SUS304-2B / 0.024" (Thickness)	1					
PAN DUCT	30269M0503	SUS304-2B / 0.024" (Thickness)		1				
EVAPORATOR FAN BLADE	3011802400	CCW / ø4.33" (Diameter)	2	2	2	2	2	2
EVAPORATOR FAN MOTOR HOUSING(B)	4017Z32244	ABS	2	2	2	2	2	2
EVAPORATOR FAN MOTOR HOUSING(C)	4017Z32233	ABS	2	2	2	2	2	2
DUCT FIXTURE(F)	30220M0800	STS304	2	2				
LOUVER FIXTURE LEFT	30220M0400	SUS304-2B / 0.024" (Thickness)			1			
LOUVER FIXTURE LEFT	30220M0700	SUS304-2B / 0.024" (Thickness)				1		
LOUVER FIXTURE LEFT	30220M2500	SUS304-2B / 0.024" (Thickness)	1					
LOUVER FIXTURE LEFT	30220M2700	SUS304-2B / 0.024" (Thickness)		1				
LOUVER FIXTURE RIGHT	30220M0500	SUS304-2B / 0.024" (Thickness)			1			
LOUVER FIXTURE RIGHT	30220M0600	SUS304-2B / 0.024" (Thickness)				1		
LOUVER FIXTURE RIGHT	30220M2600	SUS304-2B / 0.024" (Thickness)	1					
LOUVER FIXTURE RIGHT	30220M2800	SUS304-2B / 0.024" (Thickness)		1				
SHELF STANDARD	30220M0300	SUS304 / 0.031" (Thickness)	4	6	4	8	4	8
SHELF STANDARD	30220M2300	SUS304 / 0.031" (Thickness)		2				
SHELF CLIP	30220L0900	NA6 / 16PCS	4	8	8	16	8	16
THERMOSTAT FIXTURE	30220M2100	SPG / 0.039" (Thickness)	1	1				

PARTS LIST FOR SALAD & UNDERCOUNTER MODEL

Part name	Part Code	Description	Model					
			TST-28	TST-48	TUR-28	TUR-48	TUF-28	TUF-48
EVAPORATOR DRAIN PAN	30225M0300	AL	1		1		1	
EVAPORATOR DRAIN PAN	30225M0400	AL		1		1		1
PAN SUPPORT BAR	30225M0700	STS-304-4B / 0.028" (Thickness)	2	5				
LID HANDLE	30266P0100		1	1				
THERMOSTAT HARNESS	30227M0600		1	1	1	1		
MULLION INSULATOR	30233M0200	F-PS / 1.14"x4.53"x25.16"		1		1		1
LOUVER	30214M3203	STS304 / 0.028" (Thickness)	1					
LOUVER	30214M3303	STS304 / 0.028" (Thickness)		1				
LOUVER	30214M4601						1	
LOUVER	30214M4502							1
LOUVER TOP	30214M3500	STS304 / 0.028" (Thickness)	1					
LOUVER TOP	30214M3600	STS304 / 0.028" (Thickness)		1				
EVAPORATOR-FAN MOTOR	3963339700	CCW / DA1-6152DEB	2	2	2	2	2	2
PAN	30211M0100	PC	6	12				
SHELF	30278M0300		1		2		2	
SHELF (LEFT)	30278M0200			1		2		2
SHELF (LEFT/BOTTOM)	30278M0500			1				
SHELF (RIGHT)	30278M0400			1		2		2
SHELF (RIGHT/BOTTOM)	30278M0600			1				
SHELF (BOTTOM)	30278M0700		1					
CUTTING BOARD FITTING SCREW	7S105A0565		2	2				
HOOD LID FIXING NUT	30260M0200	STS / 0.157"	4	4				
MULLION PLASTIC	30253M0601	ABS		1		1		1
MULLION STAINLESS INSERT	30253M0500	STS304 / 0.028" (Thickness)		1		1		1
PAN SUPPORT FRAME	30253M1100	SUS304 / 0.039" (Thickness)	1					
PAN SUPPORT FRAME	30253M1200	STS304 / 0.039" (Thickness)		1				
THERMOMETER	30283G0410	S3511-91(MILJOCO)	1	1	1	1	1	1
TEMPERATURE CONTROL	30283M0300	GNF 105D-01A		1	1	1		
TEMPERATURE CONTROL	30283M0600	GNF 105D-04A	1					
TEMPERATURE CONTROL	30283M0700	GNF 106D-06D					1	1
DEFROST HEATER	30228M2002	300W					1	
EVAPORATOR THERMAL FUSE (BIMETAL)	30272L0400	PST-3					1	1
HOOD LID FIXING BOLT	700540808	M4X8, TRS	4	4				
DEFROST SENSOR	3018121300	PST-3A					1	1
DEFROST HEATER	30228M2102	450W						1

PARTS LIST FOR SALAD & UNDERCOUNTER MODEL

Part name	Part Code	Description	Model					
			TST-28	TST-48	TUR-28	TUR-48	TUF-28	TUF-48
FIXTURE LOVER TOP	30200T1310		2	2				
EVAPORATOR COIL	30270M1011	CU	1		1			
EVAPORATOR COIL	30270M1111	CU		1		1		
EVAPORATOR COIL	30270M1200	CU					1	
EVAPORATOR COIL	30270M1300	CU						1

7. REPLACEMENT OF MAIN COMPONENTS

7-1. REPLACING DOOR

A. Unscrew the door hinge top



B. Lift the door

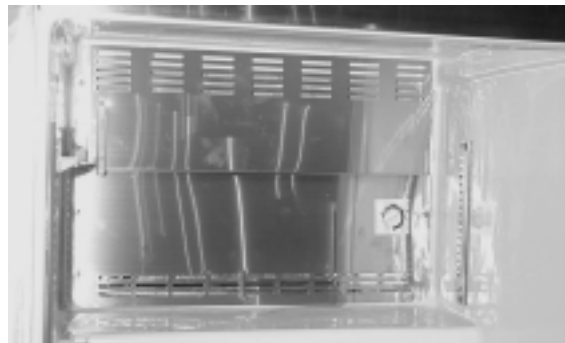


7-2. REFRIGERATION COMPARTMENT PARTS

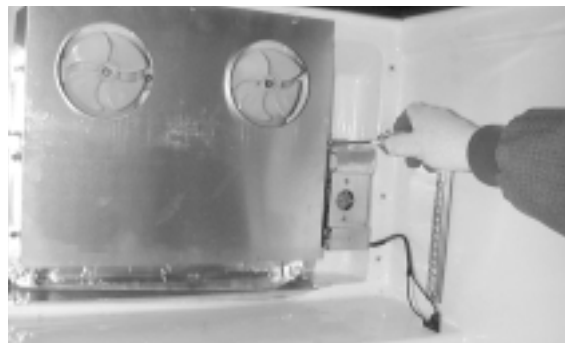
A. Disassemble pan duct



B. Disassemble louver



C. Disassemble thermostat & sensor

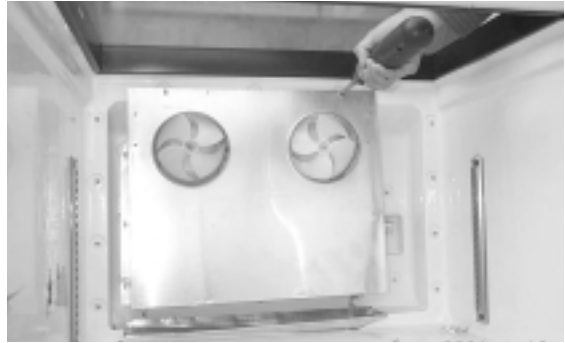
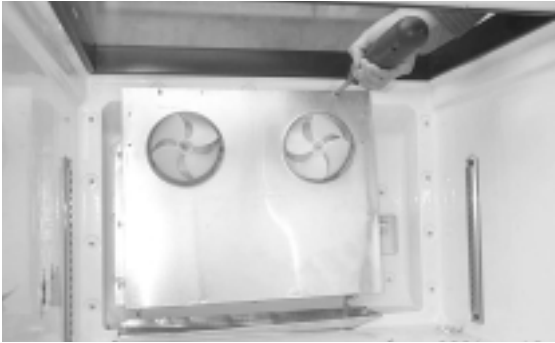


**TST-28SD,48SD
TUF-28SD,48SD**

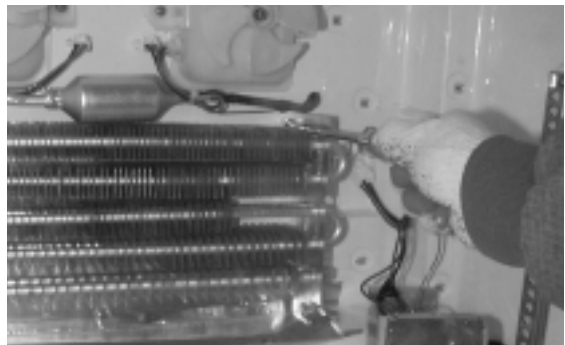
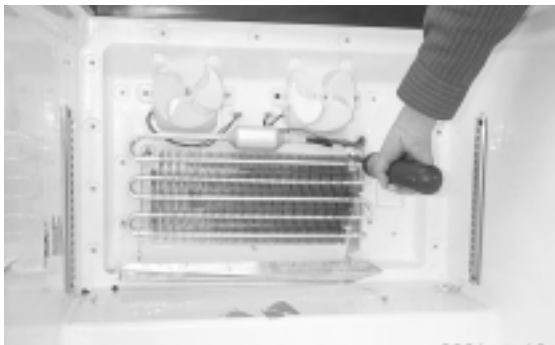
TUR-28SD,48SD

REPLACEMENT OF MAIN COMPONENTS

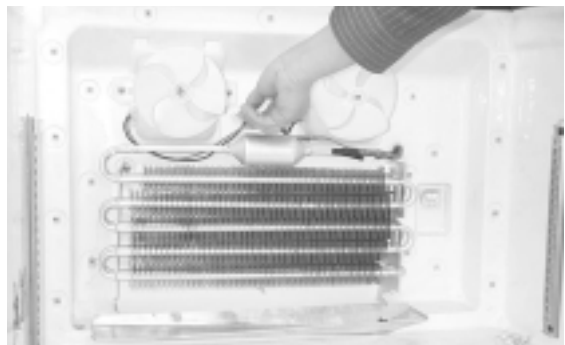
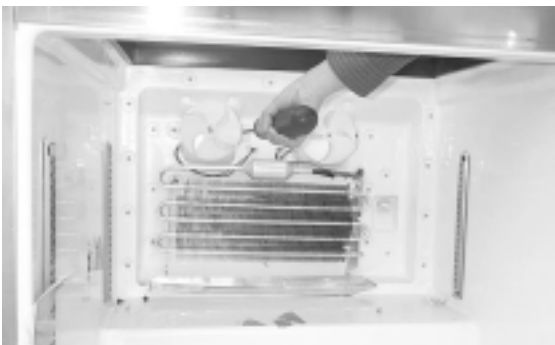
D. Disassemble duct



E. Disassemble evaporator coil



F. Disassemble evaporator fan motor

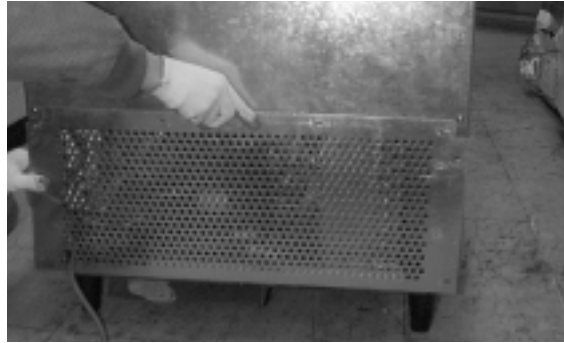
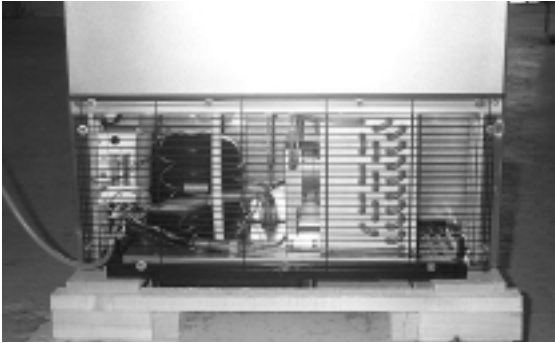


TST-28SD,48SD

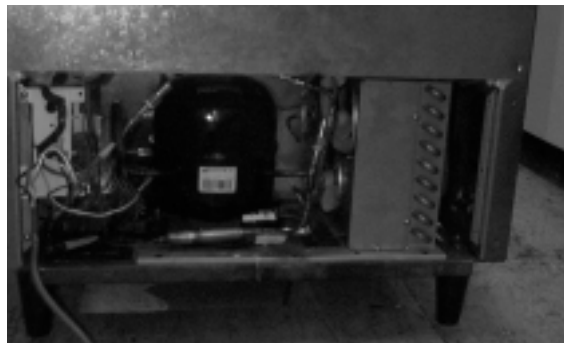
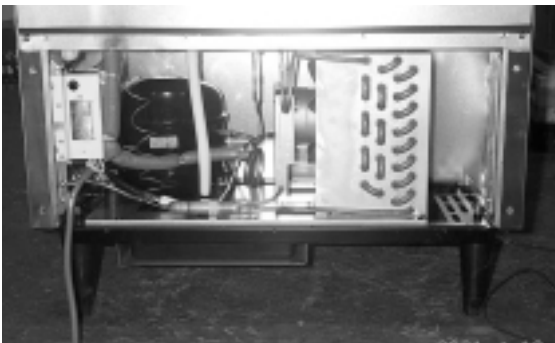
TUR-28SD,48SD

7-3. COMPRESSOR COMPARTMENT PARTS

A. Disassemble rear grill



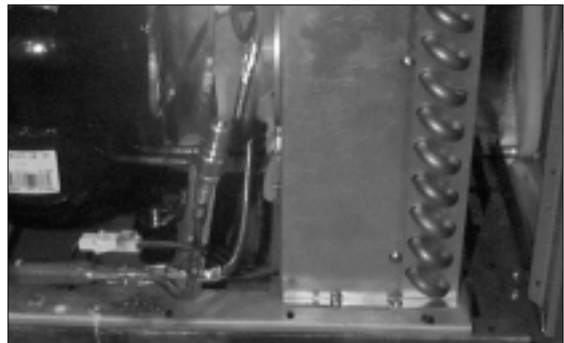
B. Disassemble condensing unit



C. Disassemble condenser fan motor



TST-28SD,48SD



TUR-28SD,48SD

REPLACEMENT OF MAIN COMPONENTS



PULL OUT THE CONDENSING UNIT



DISCONNECT THE CONNECTORS



**UNSCREW C-FAN MOTOR ASSEMBLY
SECURING SCREWS LOCATED TOP AND
BOTTOM FRONT SIDE, AND BACK SIDE**

TST-28SD,48SD



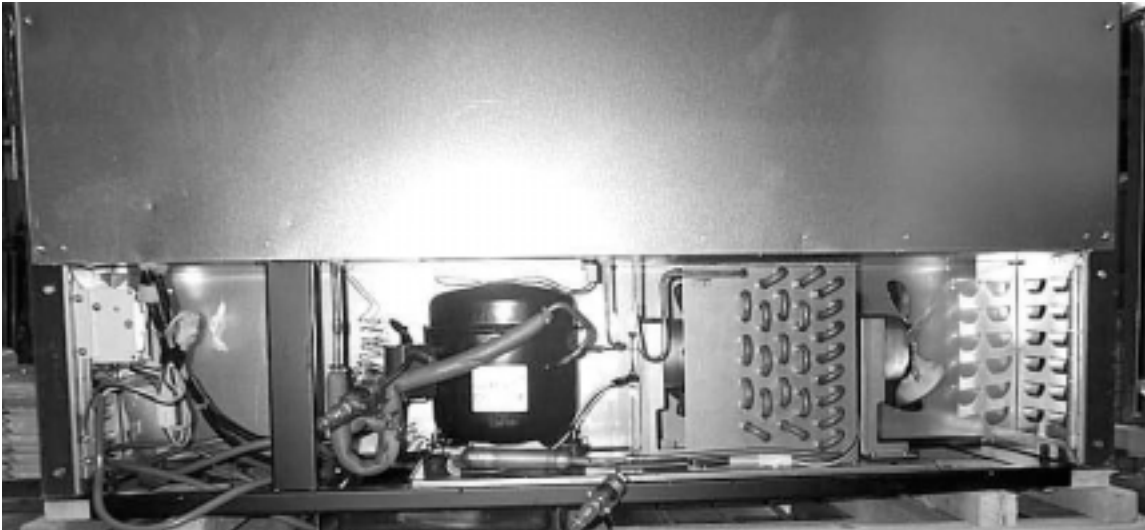
PULL OUT C-FAN MOTOR ASSEMBLY

TUR-28SD,48SD

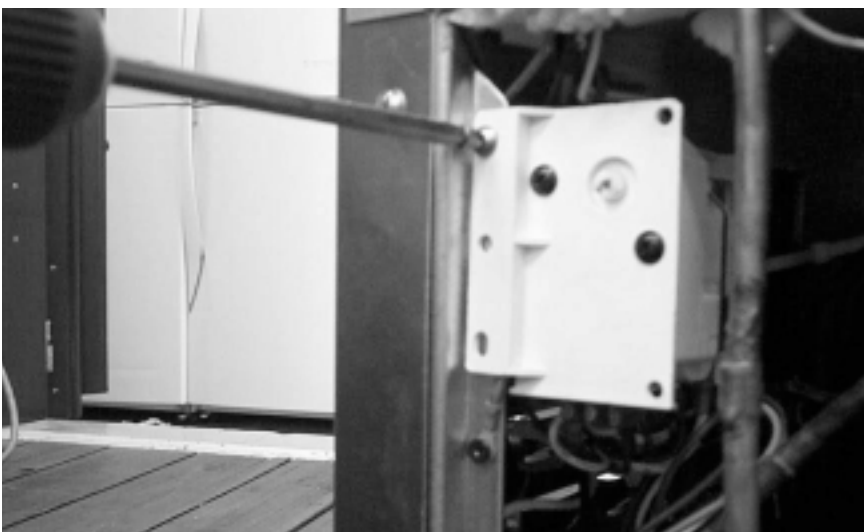
7-4. TERMINAL BOX PARTS

- Defrost Timer (TUF-48SD,28SD)
- Start Capacitor (TUF-28SD)
- Run Capacitor (TUF-48SD)

A. Remove rear grill

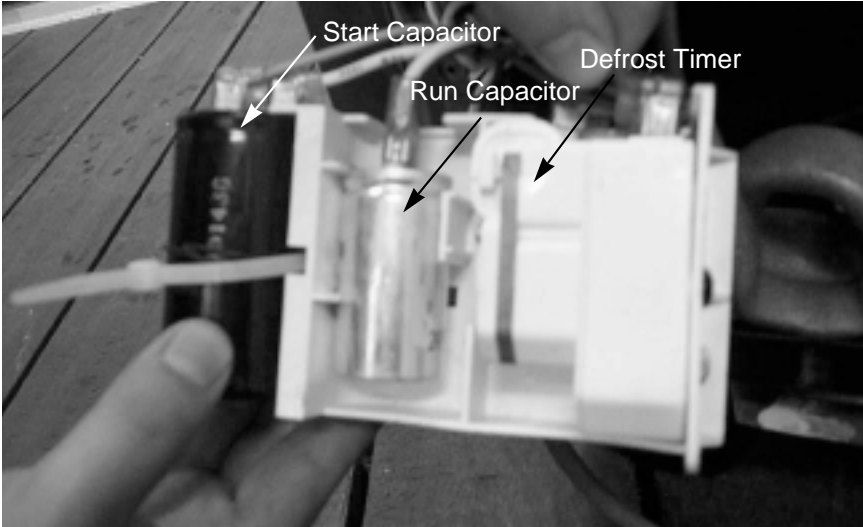


B. Uncrew the terminal box

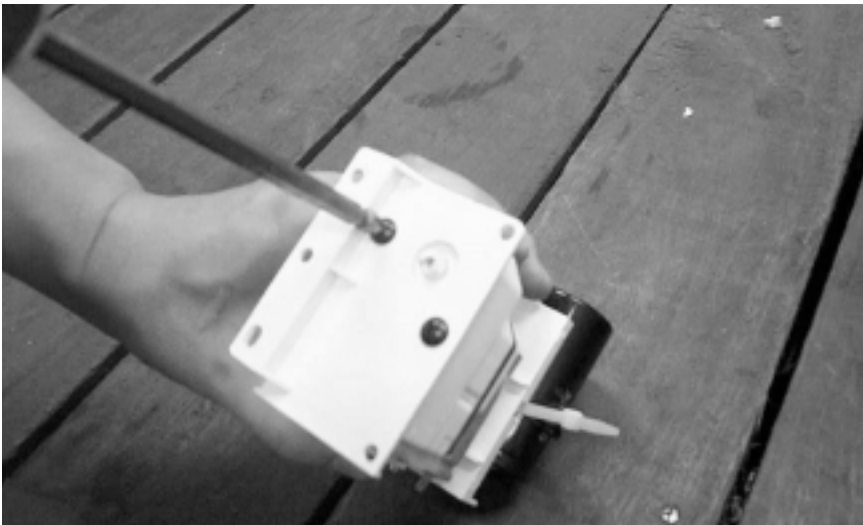


REPLACEMENT OF MAIN COMPONENTS

C. Disconnect the receptales and connectors



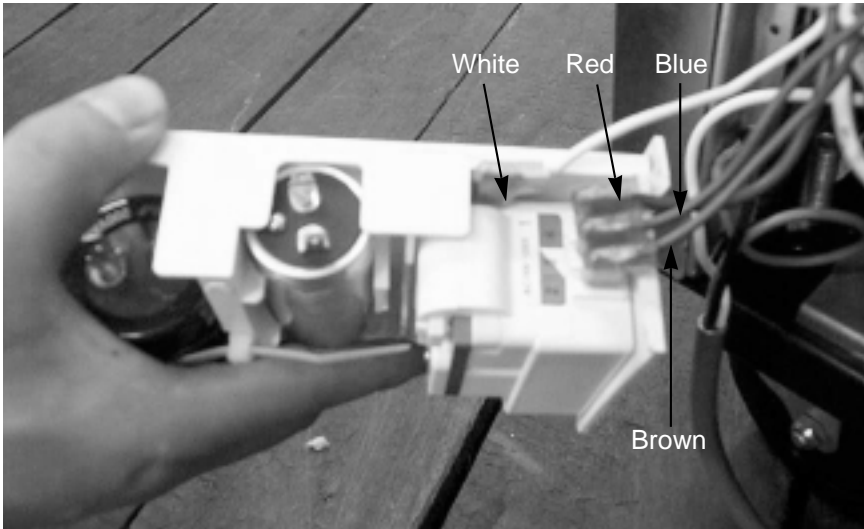
D. Remove defrost timer



REPLACEMENT OF MAIN COMPONENTS

E. Replace the defrost timer.

F. Connect the receptacles to match in same color.



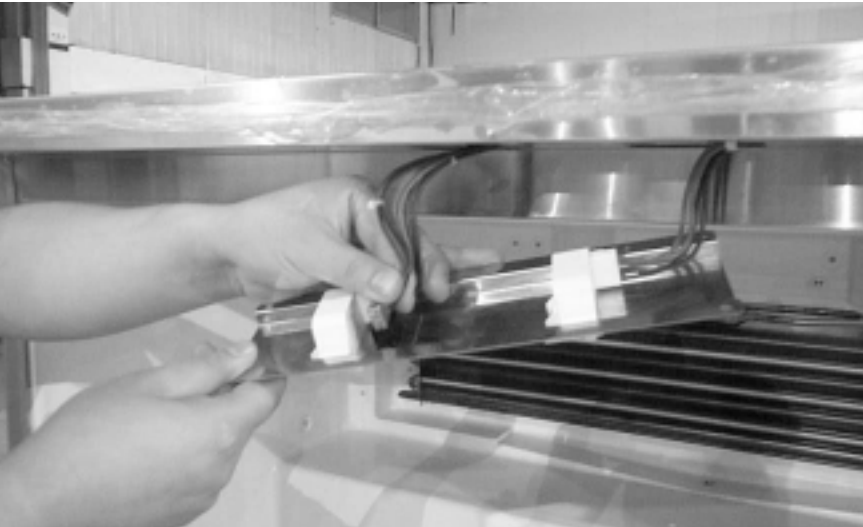
REPLACEMENT OF MAIN COMPONENTS

7-5. REPLACE DOOR SWITCH AND POWER SWITCH (TUF-48SD, 28SD)

A. Disassemble door switch bracket



- B. Disconnect receptacle and connector.**
- C. Replace door switch or power switch.**



ABOUT THIS MANUAL

VISION CREATIVE, INC.

571 526

16

		TEL	
MODEL	TUR, TST, TUF - 28SD/48SD()		
BUYER			
	1	2002.7.15	6 2002.9.4
	2	2002.7.19	7 2002.9.13
	3	2002.8.16	8 2002.10.2
	4	2002.8.20	9 2002.10.18
	5	2002.8.22	10 2002.10.21
	(2002.10.23)		
MEMO	(2002.10.18) - (SD) (2002.10.21) - 5,6,7,20,22,23 - (2002.10.22) - 3,4,7,22 - (2002.10.23) - 7 - (2003.4.17) - 8,15,16,19,20,21,22,23 (2003.4.21) - 2,3,4,6,8,15,16,18,23 (2003.4.22) - 2,3,4,5,6,7,8,16 (2003.4.23) - 8p (2003.4.23) - Han		

VISION

TEL: 757 - 9340 FAX: 774 - 1039