



INSTRUCTIONS

-J02371

REV. 4-23-04

Kit Numbers 69063-03, 69147-03, 69153-03, 69337-03, 69338-03, and 69339-03

BULLET-STYLE TURN SIGNAL RETROFIT KIT

General

These Bullet-Style Turn Signal retrofit kits fit all **1994** and later Touring models, and **1996** and later Softail models FLSTC/I and FLSTN.

These kits are available in the following styles:

LENS/ BULB TYPE:	FOR:	PART NO.
Amber Lens, Clear Bulb	Domestic	69063-03
Clear Lens, Amber Bulb	Domestic	69147-03
Smoked Lens, Amber Bulb	Domestic	69153-03
Amber Lens, Clear Bulb	HDI	69337-03
Clear Lens, Amber Bulb	HDI	69338-03
Smoked Lens, Amber Bulb	HDI	69339-03

When installing Amber Lens Turn Signal Retrofit Kit 69063-03 on a vehicle that also has an Auxiliary Brake Light/ Turn Signal Kit (Part Number 91699-99A) installed, Red Bullet Turn Signal Trim Ring Kit (Part Number 69736-02) must be installed in place of the Amber rear lenses. This kit is available separately from your Harley-Davidson dealer.

The other Bullet-Style Turn Signal retrofit kits **are not** compatible with the Auxiliary Brake Light/ Turn Signal Kit.

See the Service Parts illustration on the last page of these instructions for kit contents.

NOTE

This instruction sheet references Service Manual information. A Service Manual for your model motorcycle is required for this installation and is available from your Harley-Davidson Dealer.

Installation

⚠ WARNING

To prevent accidental vehicle start-up, which could cause death or serious injury, disconnect battery cables (negative cable first) before proceeding. (00048A)

⚠ WARNING

Disconnect negative (-) battery cable first. If positive (+) cable should contact ground with negative (-) cable connected, the resulting sparks can cause a battery explosion, which could result in death or serious injury. (00049A)

1. Refer to the Service Manual and follow the instructions given to remove the seat and disconnect the battery cables, negative cable first.

Removing the Original Front Turn Signal Lamps

2. **For Touring models:** Refer to TURN SIGNAL LAMPS: FRONT TURN SIGNAL LAMP: REMOVAL in the appropriate Service Manual to access the AMP MULTILOCK front turn signal connector [31] and disassemble the turn signals from the vehicle.

For Softail models: Refer to TURN SIGNALS/ RUNNING LIGHTS: LAMP REPLACEMENT in the appropriate Service Manual to access the AMP MULTILOCK front turn signal connector [31] and disassemble the turn signals from the vehicle.

For all models: Save all lamp mounting hardware.

3. Note the location of all tie straps, so the new wiring can be attached in the same locations.
4. Pull apart the pin and socket halves of the front turn signal connector [31].

NOTE

Record the color of each wire, its origin (left or right lamp) and which cavity it was in before removing the terminals from the socket (lamp-side) half of the connector.

5. See Figure 1. Remove the wires and terminals from the socket housing [31B]. Attach a length of strong, flexible mechanic's wire to each terminal.

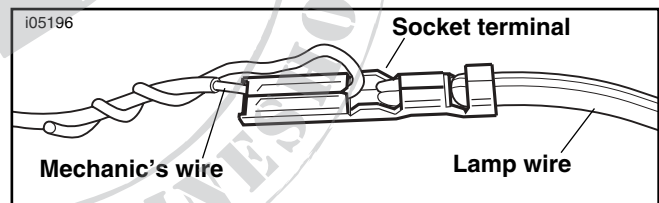


Figure 1. Mechanic's Wire

NOTE

Use of the mechanic's wires will aid in the installation of the new turn signal lamps. Some tips:

- The mechanic's wire should be strong enough to pull the terminals and lamp wires through the conduit without breaking.
- The wires should be long enough to ensure that the free ends are not lost in the conduit.
- See Figure 1. Feed each mechanic's wire through the opening in a socket terminal, then loop back, twisting the end until tightly wound around the longer strand.
- Pull the lamp wires from one lamp at a time through the conduit.
- Once the lamp wires and attached terminals are free of the conduit, unfasten the mechanic's wires from the terminals before discarding the lamps.

6. Pull the lamp wires and terminals, along with the mechanic's wires, through the conduit to free the original lamps from the motorcycle. Leave the mechanic's wires in the conduit. Discard the lamps.

Installing the New Front Turn Signal Lamps

1. Attach a mechanic's wire to each terminal on the new bullet-style front turn signal lamps.
2. Pull the mechanic's wires, along with the terminals and lamp wires from one lamp at a time back through the conduit. Mark the wires to identify their origin (left or right lamp) after they've been pulled all the way through the conduit.

NOTE

If it becomes too difficult to insert the new lamp wires through the conduit, the wires can be routed alongside the conduit, then bound securely with tie straps from the kit.

3. Obtain the new socket housing from the kit. Insert each terminal from the new lamps into the numbered cavity of the new connector to match the original lamp connections.
4. Connect the new socket housing to the front turn signal connector pin housing [31A].
5. Re-attach the wiring to the motorcycle with tie straps from the kit.
6. **For Touring models:** Refer to TURN SIGNAL LAMPS: FRONT TURN SIGNAL LAMP: INSTALLATION in the appropriate Service Manual to assemble the new front turn signals to the vehicle.
For Softail models: Refer to TURN SIGNALS/ RUNNING LIGHTS: LAMP REPLACEMENT in the appropriate Service Manual to assemble the new front turn signals to the vehicle.

Removing the Original Rear Turn Signal Lamps

1. **For Touring models:** Refer to TURN SIGNAL LAMPS: REAR TURN SIGNAL LAMP: REMOVAL in the appropriate Service Manual to disconnect the left [18] and right [19] rear turn signal connectors, and disassemble the turn signals from the vehicle.

For Softail models: Refer to TURN SIGNALS/ RUNNING LIGHTS: LAMP REPLACEMENT in the appropriate Service Manual to disconnect the left [18] and right [19] rear turn signal connectors, and disassemble the turn signals from the vehicle.

For all models: Save all lamp mounting hardware.

2. Note the location of any tie straps, so the new wiring can be attached in the same locations.

Installing the New Rear Turn Signal Lamps

1. **For Touring models:** Refer to TURN SIGNAL LAMPS: REAR TURN SIGNAL LAMP: INSTALLATION in the appropriate Service Manual to assemble the new turn signals to the vehicle, and re-connect the rear turn signal connectors.
For Softail models: Refer to TURN SIGNALS/ RUNNING LIGHTS: LAMP REPLACEMENT in the appropriate Service Manual to assemble the new turn signals to the vehicle, and re-connect the rear turn signal connectors.
2. Re-attach the wiring to the motorcycle with tie straps from the kit, if originally installed.

⚠ WARNING

Connect positive (+) battery cable first. If positive (+) cable should contact ground with negative (-) cable connected, the resulting sparks can cause a battery explosion, which could result in death or serious injury. (00068)

3. Connect the battery cables, positive cable first.
4. Refer to the Service Manual, and follow instructions to install the seat.

⚠ WARNING

After installing seat, pull upward on front of seat to be sure it is in locked position. While riding, a loose seat can shift causing loss of control, which could result in death or serious injury. (00070)

⚠ WARNING

Be sure that all lights and switches operate properly before operating motorcycle. Low visibility of rider can result in death or serious injury. (00316a)

5. Start the motorcycle and make sure that all four turn signals function properly.



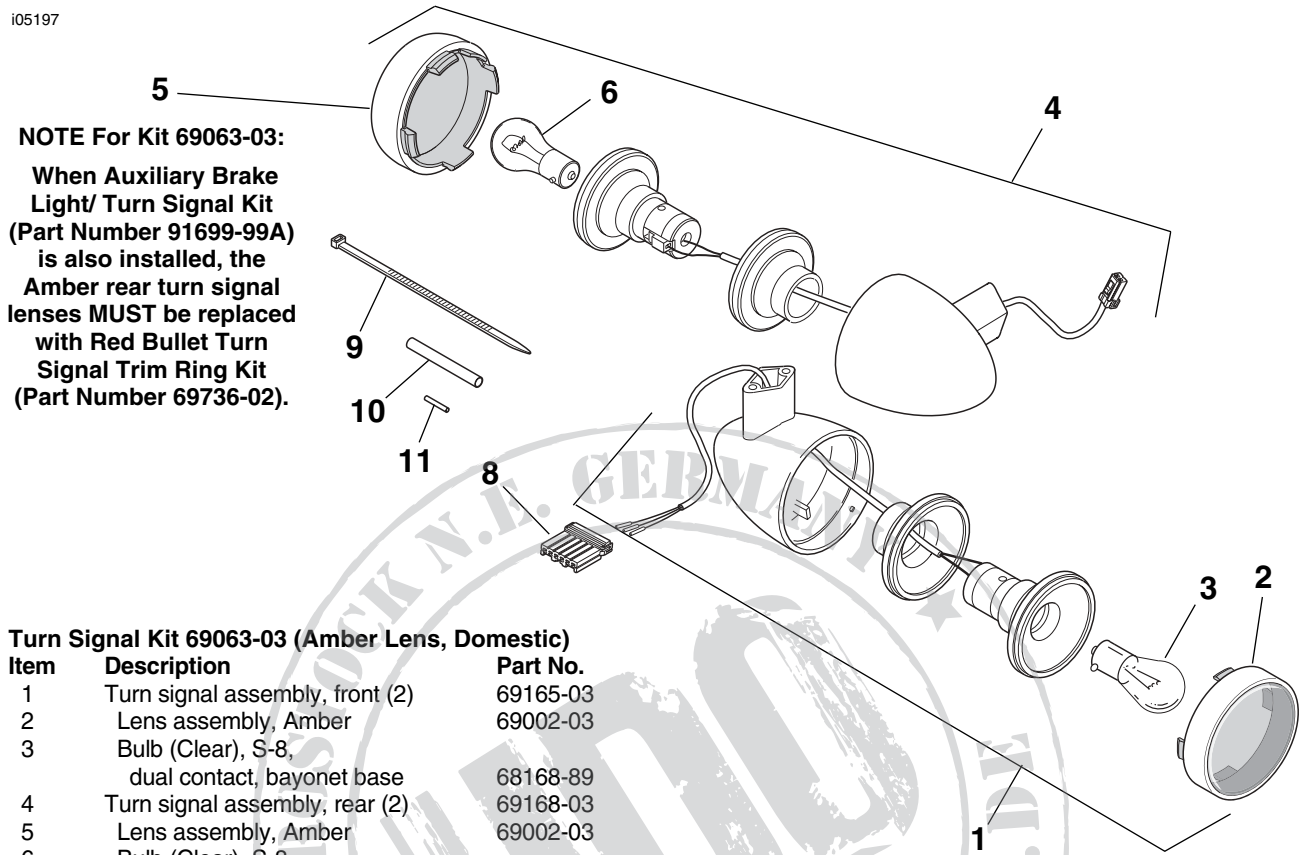
Service Parts

Part No. 69063-03 & others

Date 4/04

Bullet-Style Turn Signal Kit

105197



NOTE For Kit 69063-03:

When Auxiliary Brake Light/ Turn Signal Kit (Part Number 91699-99A) is also installed, the Amber rear turn signal lenses MUST be replaced with Red Bullet Turn Signal Trim Ring Kit (Part Number 69736-02).

Turn Signal Kit 69063-03 (Amber Lens, Domestic)

Item	Description	Part No.
1	Turn signal assembly, front (2)	69165-03
2	Lens assembly, Amber	69002-03
3	Bulb (Clear), S-8, dual contact, bayonet base	68168-89
4	Turn signal assembly, rear (2)	69168-03
5	Lens assembly, Amber	69002-03
6	Bulb (Clear), S-8, single contact, bayonet base	68572-64B

Turn Signal Kit 69147-03 (Clear Lens, Domestic)

Item	Description	Part No.
1	Turn signal assembly, front (2)	69201-03
2	Lens assembly, Clear	69004-03
3	Bulb (Amber), S-8, dual contact, bayonet base	69331-02
4	Turn signal assembly, rear (2)	69202-03
5	Lens assembly, Clear	69004-03
6	Bulb (Amber), S-8, single contact, bayonet base	69330-02

Turn Signal Kit 69338-03 (Clear Lens, HDI)

Item	Description	Part No.
1	Turn signal assembly, front (2)	69342-03
2	Lens assembly, Clear	69004-03
3	Bulb (Amber), S-8, (E-approved) single contact, bayonet base	69348-03
4	Turn signal assembly, rear (2)	69343-03
5	Lens assembly, Clear	69004-03
6	Bulb (Amber), S-8, (E-approved) single contact, bayonet base	69348-03

Turn Signal Kit 69153-03 (Smoked Lens, Domestic)

Item	Description	Part No.
1	Turn signal assembly, front (2)	69203-03
2	Lens assembly, Smoked	69021-03
3	Bulb (Amber), S-8, dual contact, bayonet base	69331-02
4	Turn signal assembly, rear (2)	69204-03
5	Lens assembly, Smoked	69021-03
6	Bulb (Amber), S-8, single contact, bayonet base	69330-02

Turn Signal Kit 69339-03 (Smoked Lens, HDI)

Item	Description	Part No.
1	Turn signal assembly, front (2)	69344-03
2	Lens assembly, Smoked	69021-03
3	Bulb (Amber), S-8, (E-approved) single contact, bayonet base	69348-03
4	Turn signal assembly, rear (2)	69345-03
5	Lens assembly, Smoked	69021-03
6	Bulb (Amber), S-8, (E-approved) single contact, bayonet base	69348-03

Turn Signal Kit 69337-03 (Amber Lens, HDI)

Item	Description	Part No.
1	Turn signal assembly, front (2)	69340-03
2	Lens assembly, Amber	69002-03
3	Bulb (clear), S-8, (E-approved) single contact, bayonet base	68163-84
4	Turn signal assembly, rear (2)	69341-03
5	Lens assembly, Amber	69002-03
3	Bulb (clear), S-8, (E-approved) single contact, bayonet base	68163-84

Common Parts for All Kits

Item	Description	Part No.
7	Turn signal wiring kit	69207-03
8	Housing, socket (6-way)	73156-96BK
9	Strap, cable (8)	10065
10	Tube, heat shrink (10)	67113-83
11	Connector (10)	70581-73