



1-888-571-9193
www.HeatDemon.com



Instructions for Motorcycle Grip Heater Kit for Harley

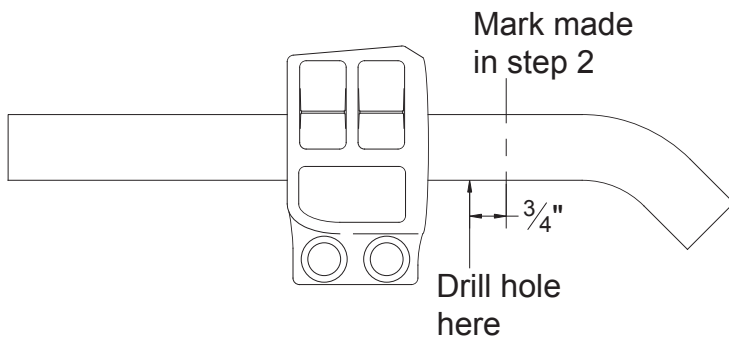
Part Numbers: 211055, 211056, 212055 & 212056

Items Required for Installation

- Drill with a 5/16" Bit
- Grip Glue Rated for 250°F (If Desired)

Need installation help? Call us at (888) 571-9193 or visit YouTube.com/HeatDemon for instructional videos.

Before Kit Installation

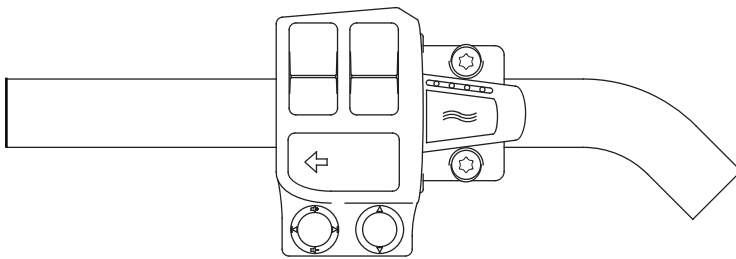


1. Disconnect the battery leads, negative first.
2. Mark the inside edge of each perch mount clamp as shown in the diagram.
3. Remove the perch mount clamp you wish to replace with the controller, the brake and clutch housing assemblies and grips.
4. On the side the controller will be mounted on, drill a 5/16" hole on the bottom side of the handlebar 3/4" from the mark made in Step 2 as shown in the diagram.

Note: Some handlebars may have an existing hole. If so, skip this step and continue to Step 6.

5. De-burr the hole and install the included rubber grommet into the hole drilled in Step 4.
6. Route the included 7 ft power wire internally from the center of the handlebar and out the left side of the handlebar.

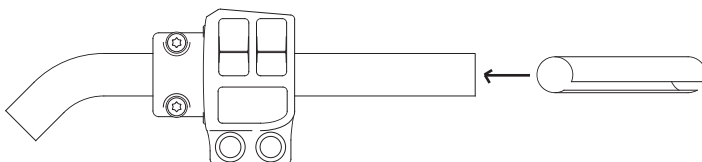
Controller Installation



Note: The Heat Demon controller will replace one perch mount clamp.

1. Route the controller wires through the rubber grommet and out the left side of the handlebar. If necessary, use the included coiled wire snake.
2. Re-install the brake or clutch housing assemblies, along with the perch mount clamp not being replaced. Use the marks made in Step 2 in previous section for alignment.
3. Mount the controller using the stock bolts and make sure not to pinch any wires.

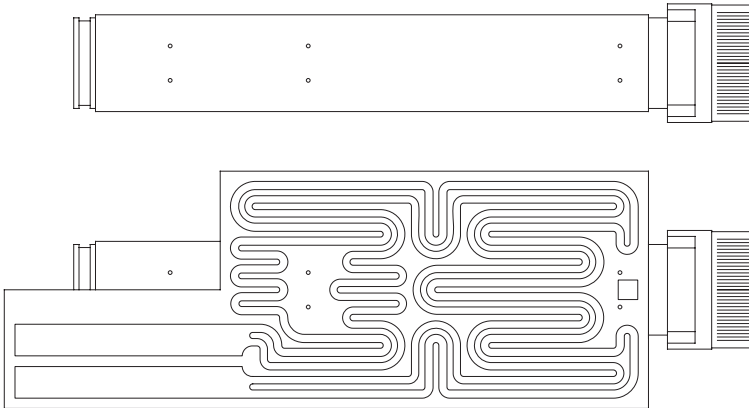
Throttle-Side Heater Installation (Motorcycles without Electronic Throttle)



Note: Please see Page 2 for throttle-side heater installation instructions for motorcycles with electronic throttle.

1. Route the throttle-side heater wires through the handlebar and out of the left side using the included coiled wire snake.
2. Insert the throttle-side heater completely into the handlebar.

Throttle-Side Heater Installation (Motorcycles with Electronic Throttle)



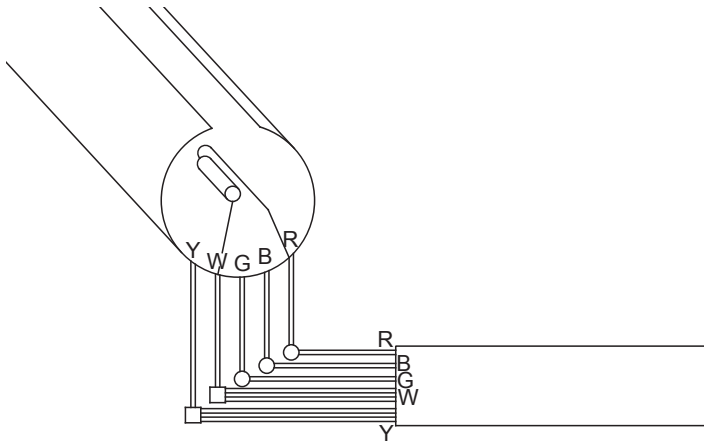
Note: For handlebars with an inner diameter of 0.875" and larger, use the rolled-aluminum two-wire heater.

1. Remove the throttle sensor from the handlebar according to your model's service manual.
2. Wrap the **rolled aluminum heater** around the throttle sensor.
3. Route the throttle-side heater wires through the handlebar and out of the left side using the included coiled wire snake.
4. Insert the heater and sensor back into the handlebar, making sure not to damage the heater.

Note: For handlebars with an inner diameter smaller than 0.875", use the flexible two-wire heater.

1. Remove the throttle sensor from the handlebar according to your model's service manual.
2. Remove the release paper from the **flexible heater** and adhere it to the throttle sensor as shown in the diagram.
3. Insert the heater and sensor back into the handlebar, making sure not to damage the heater.

Clutch-Side Heater Installation



- Red 3 Wire Connector
- Yellow 2 Wire Connector

1. Make connections as shown in the diagram, using the included red and yellow push-button connectors. Make sure to completely crush the push-button connectors.
2. Fold the excess wires inside of the clutch side heater and insert completely into the handlebar.
3. Using the included red tap connectors, connect the other end of the 7ft power cable to an accessory circuit; red to positive, black to negative.
4. Reconnect the battery leads. With the vehicle and controller on, you should start to feel heat in approximately 5-10 minutes.
5. Re-install the grips. If desired, apply a thin coat of grip glue to the inside of the grips before pushing on the handlebar.

Warranty & Damage

This Heat Demon product has a five year limited warranty.

The warranty does not cover:

- Products worn by use;
- Tampering or misuse of the product, including operation outside of design specifications;
- Damages made to products installed incorrectly, including shorting or pinched wires;
- Damages caused by crashes or natural disasters.

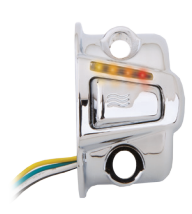
Because Heat Demon does not have any control over the connection and use of the product, or any other related electronics, no liability will be assumed nor accepted for damage resulting from the use of the product. In no case shall liability exceed the product's original cost.



Steering Wheel



Seat Heaters



Grip Heaters



Visit www.HeatDemon.com for more Heat Demon products.