

VIDEOJET EXCEL[®]

2000 Series Illustrated Parts Breakdown

P/N 361068-01
Rev AE 05/02

Please place this Illustrated Parts Breakdown in the Chapter 9 and Chapter 10 location in your Service Manual. It has been removed to allow for frequent picture and part number updates.



800-843-3610 • www.videojet.com • info@videojet.com

Videojet Technologies Inc. • 1500 Mittel Boulevard
Wood Dale IL • 60191-1073 • USA
Phone: 630-860-7300 • Fax: 630-616-3623

For additional information, contact your local Marsh product distributor at:

SORIM

15 BP 687 ABIDJAN 15 - R.C.I
TEL : +225-21-75-89-05
FAX : +225-21-27-14-64
MAIL : sorim@aviso.ci

DISTRIBUTEUR EXCLUSIF – AFRIQUE DE L'OUEST

©Copyright 2002 by **Videojet Technologies Inc.**
All rights reserved. No part of this book may be reproduced
or utilized in any form or by any means, electronic or mechanical, including photocopying,
recording or by any information storage and retrieval system, without written permission.

Inquires should be addressed to **Videojet Technologies Inc.**
Wood Dale, IL 60191

Videojet Printer Compliance Information

Safety

For all customers

This equipment is UL listed in the U.S.A., CSA certified in Canada, and certified by TUV Product Service for safety in the European Union. It meets the requirements of the low voltage directive in the European Union.

Electromagnetic Compatibility

For customers in the U.S.A.

This equipment has been tested and found to comply with the limits for a Class A digital device, pursuant to Part 15 of the FCC Rules. These limits are designed to provide reasonable protection against harmful interference when the equipment is operated in a commercial environment. This equipment generates, uses, and can radiate radio frequency energy and, if not installed and used in accordance with the instruction manual, may cause harmful interference to radio communications. Operation of this equipment in a residential area is likely to cause harmful interference in which case the user will be required to correct the interference at his own expense.

For customers in Canada

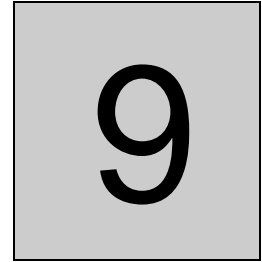
This Class A digital apparatus meets all requirements of the Canadian Interference-Causing Equipment Regulations.

Pour la clientèle du Canada

Cet appareil de la classe A respecte toutes les exigences du Règlement sur la matériel brouilleur du Canada.

For customers in the European Union

This printer complies with all requirements of the Electromagnetic Compatibility directive of the European Union. All Videojet accessories designed to be used with this printer maintain this compliance. If non-Videojet accessories are attached to the printer, it is the sole and full responsibility of the customer to ensure that they meet the requirements of this directive. Attaching non-compliant accessories may increase the risk of injury, and cause the printer to exceed the limits of the Electromagnetic Compatibility directive.



Illustrated Parts Breakdown

In this chapter you will find:

- Complete illustrations of the products assemblies
- Itemized listing of the components associated with each drawing
- Part numbers for available assemblies and components

Refer to page 9-2 for a chapter-level Table of Contents.

Chapter 9 Contents

| | |
|---|------------|
| Introduction | 9-3 |
| Parts Lists | 9-3 |
| "SP" Part Numbers | 9-3 |
| Replacement Parts Illustrations | |
| Generic EXCEL [®] Printer, Sheet 1 | 9-4 |
| Generic EXCEL [®] Printer, Sheet 2 | 9-5 |
| Generic EXCEL [®] Printer, Sheet 2 (continued)..... | 9-6 |
| Generic EXCEL [®] Printer Sheet 3..... | 9-7 |
| Control Board | 9-11 |
| EXCEL [®] Hydraulic/Pneumatic Assembly, Sheet 1 | 9-14 |
| EXCEL [®] Hydraulic/Pneumatic Assembly, Sheet 2..... | 9-15 |
| Ink Cylinder and Switch Assembly | 9-18 |
| Ink Module Assembly..... | 9-20 |
| Cap and Stem Assembly | 9-22 |
| Air Manifold Assembly | 9-24 |
| Input Air Manifold Assembly..... | 9-26 |
| Gauge Door Assembly..... | 9-28 |
| Printhead Assembly | 9-30 |
| Printhead Assembly Detail | 9-31 |
| Cable and Duct Assembly | 9-33 |
| Cable and Duct Assembly Detail..... | 9-34 |
| | |
| <i>EXCEL 2000 Opaque Printer ONLY</i> | |
| EXCEL 2000 Opaque Circulator Pump Assembly..... | 9-36 |
| EXCEL 2000 Opaque Circulator Pump Manifold Assembly..... | 9-37 |
| | |
| <i>Note: If you received this IPB as a replacement IPB, you may have an older style ink module assembly. To order replacement parts for this older style ink module, refer to the page number shown below. If you received this IPB with your printer, or if your printer is an EXCEL 2000 Opaque, disregard this section.</i> | |
| | |
| EXCEL 2000 Ink Module Assembly (Older Models ONLY)..... | 9-39 |

Introduction

This chapter contains all part numbers necessary to order EXCEL 2000 and the EXCEL 2000 Opaque printer replacement parts and assemblies.

For part numbers relating to the EXCEL 2000 Auto Flush Assembly, please refer to the Auto Flush Addendum.

Parts Lists

This illustrated parts breakdown is presented in disassembled order. Detail parts are shown below their respective upper level assemblies whenever possible.

The parts lists follow the illustration for a particular assembly and represent the field replaceable components of that assembly. The number listed in the quantity column is the number of the specific part required to complete the assembly and may not reflect the quantity needed for the entire system.

Bills of materials are divided into four columns. The item numbers refer to the identification number located on the drawing. The part number is the **VIDEOJET** part number, used to identify the part for ordering. The part description column lists each part name, and the quantity column lists the quantity of that part used in that particular assembly.

Illustrations are shown before the parts list for each assembly. Some assembly illustrations require more than one page.

If you received this IPB as a replacement IPB, refer to the Table of Contents on the previous page to ensure that you refer to the correct ink module assembly.

“SP” Part Numbers

Where a part number is designated “SP”, it is a specially packaged repair or replacement part. Be sure to refer to the “SP” when ordering parts from **VIDEOJET** that are marked “SP” in the parts list.

Note: Order parts by part number and not item number. The item number column refers to the unique callout for the illustration for each list.

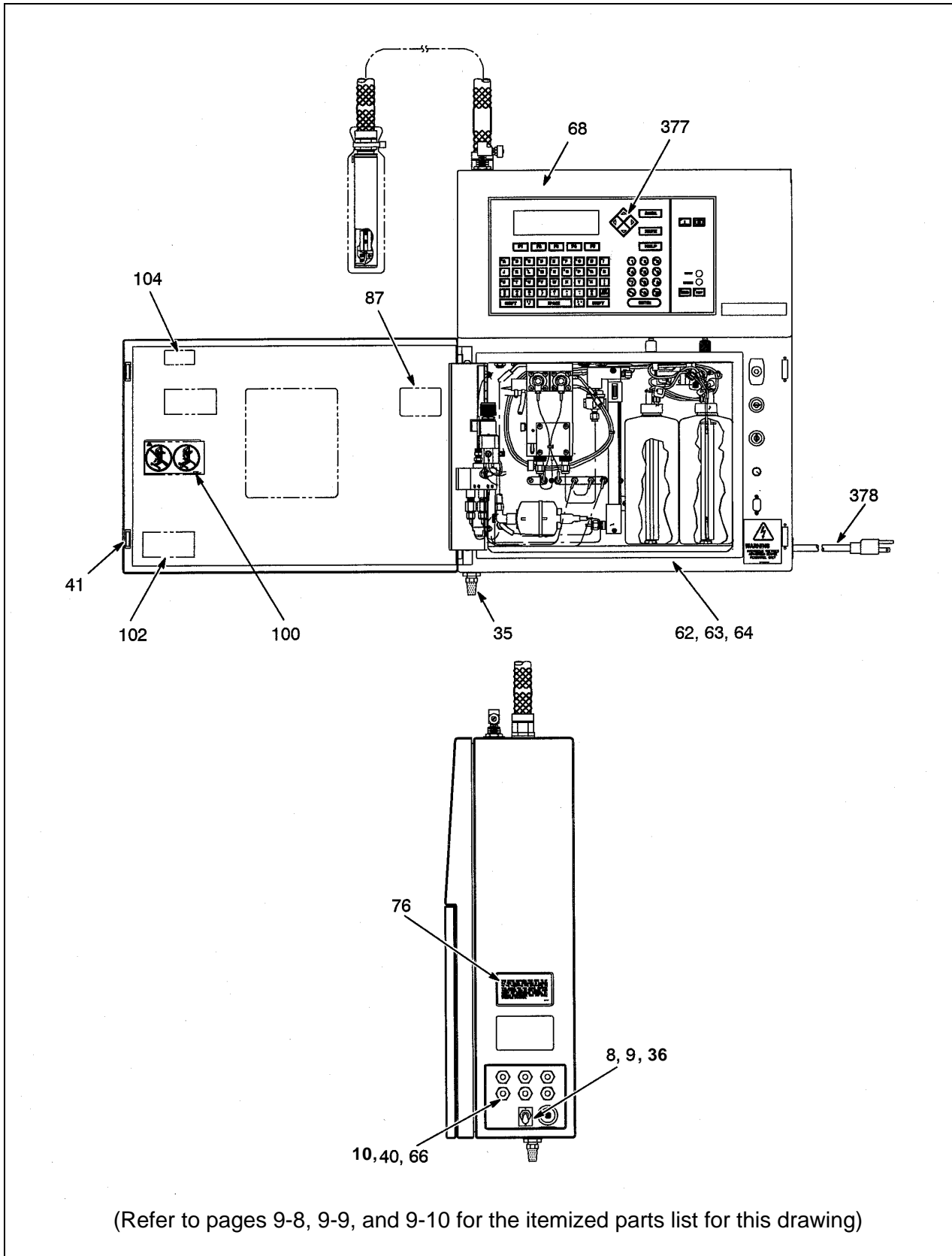


Figure 9-1. Generic EXCEL® Printer, Sheet 1

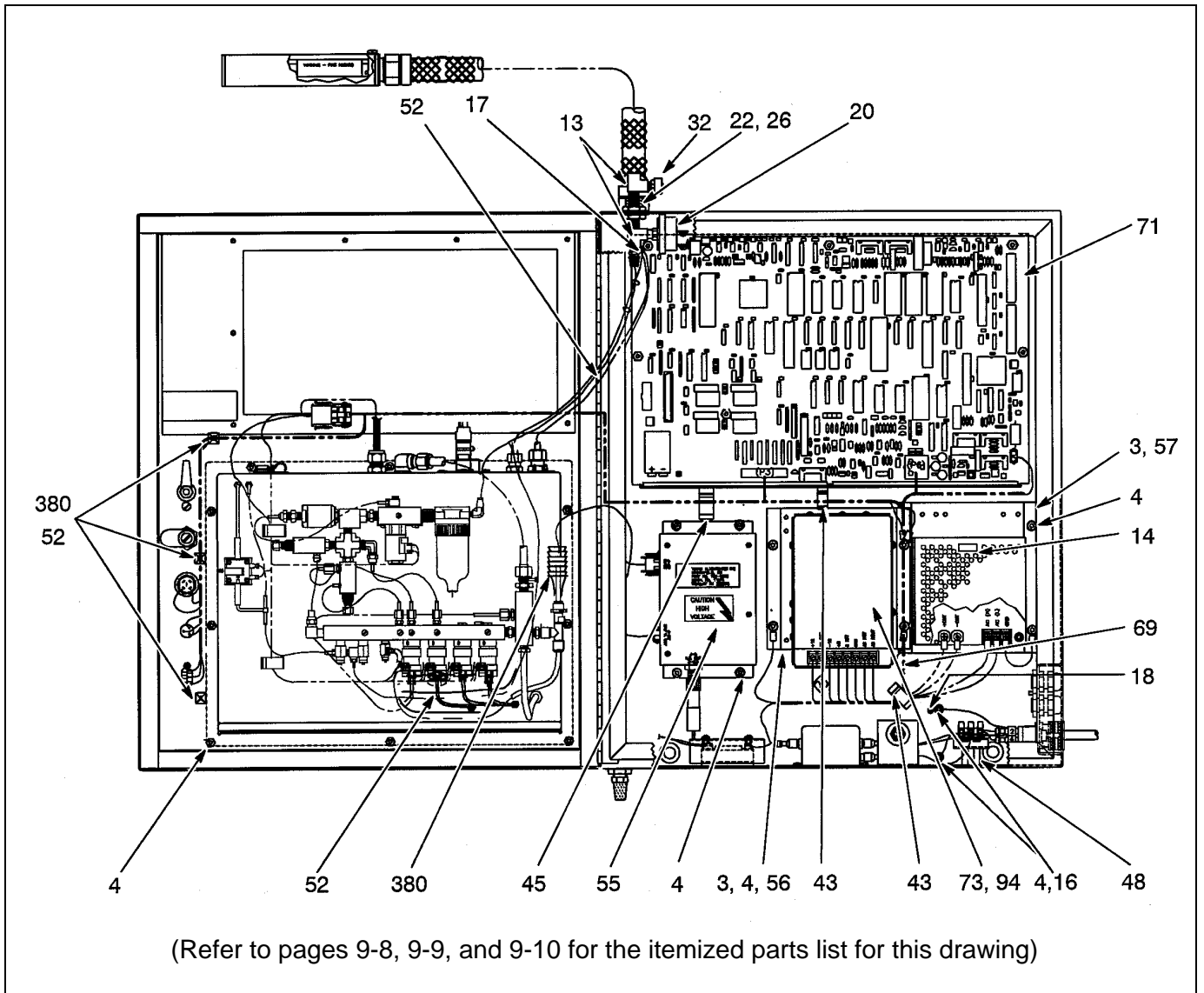


Figure 9-2. Generic EXCEL® Printer, Sheet 2

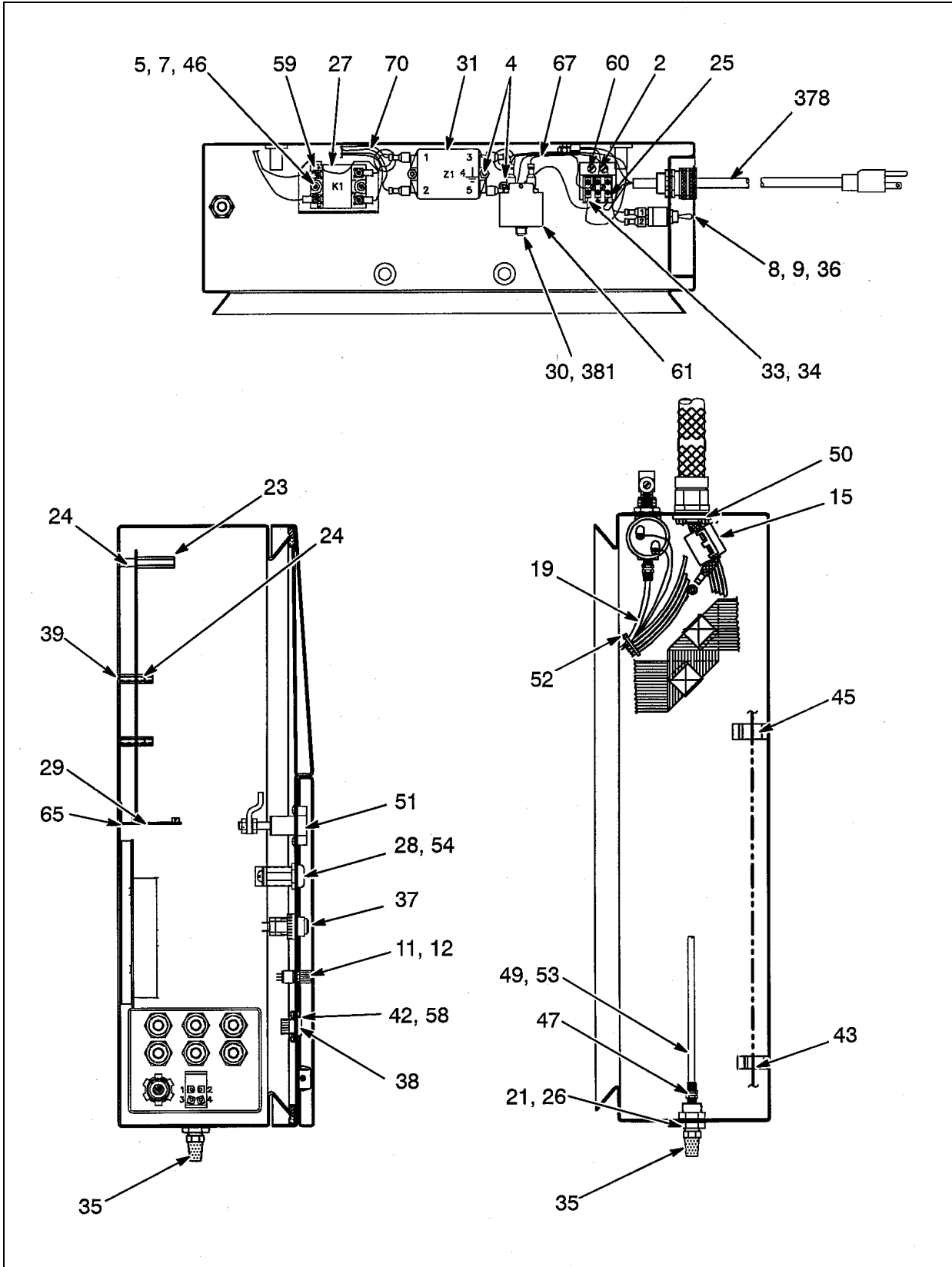


Figure 9-3. Generic EXCEL® Printer, Sheet 2 (continued)

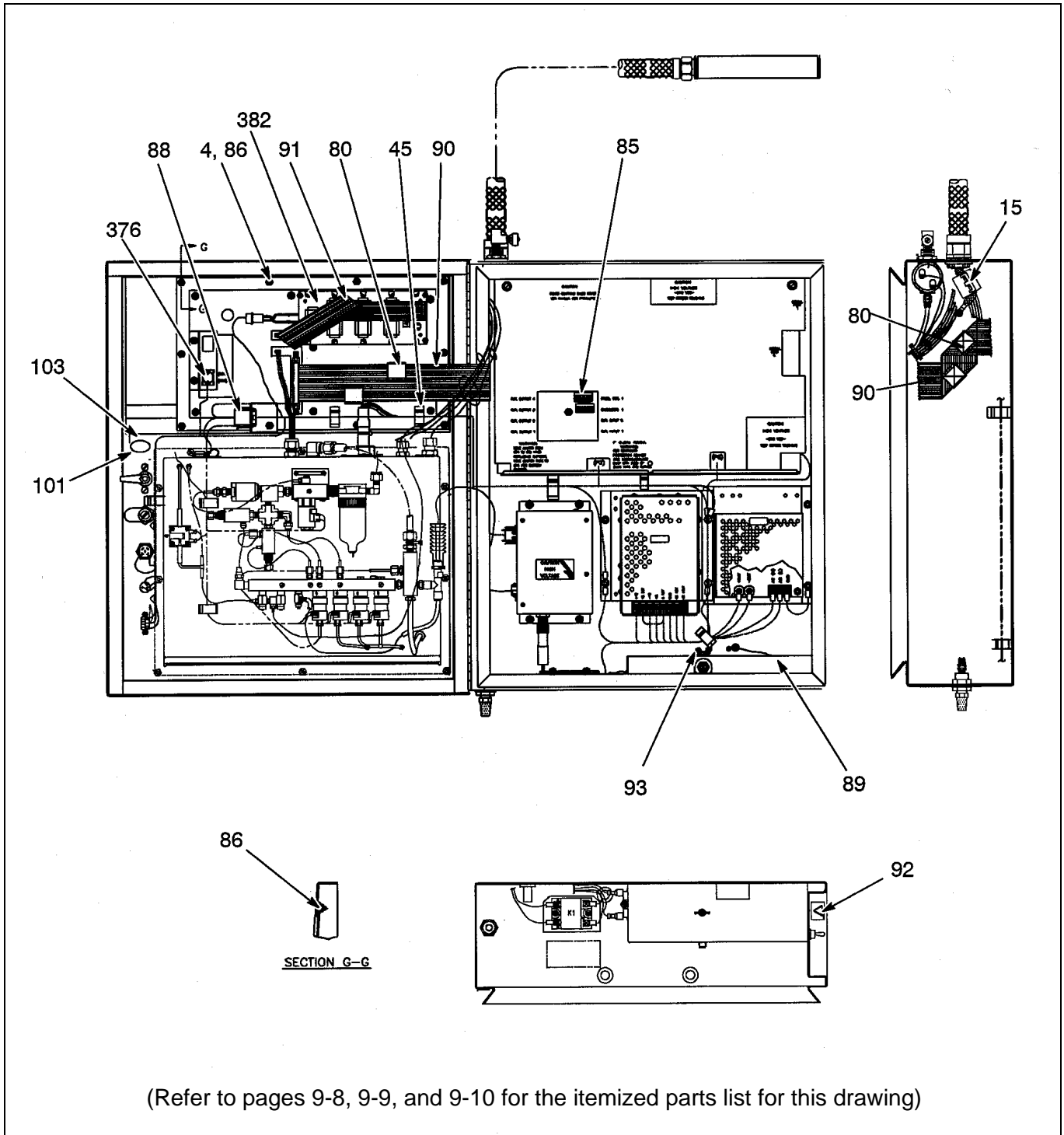


Figure 9-4. Generic EXCEL[®] Printer, Sheet 3

| Complete EXCEL 2000 Printer Parts List (Refer to Figure 9-1, Figure 9-2, Figure 9-3, and Figure 9-4) | | | |
|---|--------------------|--|-----------------|
| Item | Part Number | Description | Quantity |
| 2 | 001661 | SCREW, MACH, PNHD, PHLP, 8-32 5/16 *OB | 2 |
| 3 | 001681 | SCREW, MACH, SEMS EXT, 6-32 1/4 LG | 8 |
| 4 | 014811 | NUT, KEPS, 8-32 | 44 |
| 5 | 100319 | SCREW, MACH, PNHD, POZ, 8-32 1/4 LG | 6 |
| 7 | 190726 | WASHER, FLAT, .0299 .182 ID | 2 |
| 8 | 200162 | SWITCH, FACE PLATE, .468, "I/O" | 1 |
| 9 | 209025 | SWITCH, TOGGLE, DPST, METAL, VDE | 1 |
| 10 | 209083 | GASKET | 6 |
| 11 | 205820 | O RING, 0.238 ID, BUTYL, LG STEM | 2 |
| 12 | 201987 | KNOB, BLACK PLASTIC, 1/2" | 1 |
| 13 | 202129 | FITTING, PIPE, STRT T, BRSS, 1/8 NPT | 2 |
| 14 | SP209077 | POWER SUPPLY, 12VDC, 100-240, 60W | 1 |
| 15 | 207251 | FERRITE CASE | 1 |
| 16 | 202976 | WASHER, LOCK EXT. #8 | 3 |
| 17 | 209184 | EA FITTING, TUBE, ML CNNCTR, 1/4 O.D. | 1 |
| 18 | 360414 | LABEL, GROUND DECAL | 1 |
| 19 | 203777 | TUBING, POLYETHYLENE, 1/4 OD | 1.21 FT. |
| 20 | SP204447 | SWITCH, PRESSURE, ML CONN, 60 PSIG | 1 |
| 21 | 374529 | FITTING, BULKHEAD, 1/4 NPT 1L | 2 |
| 22 | 204478 | FITTING, BULKHEAD, 1/8 NPT 1L | 1 |
| 23 | 204508 | STANDOFF, HEX, THRD 8-32 1-1/2 L | 3 |
| 24 | 209456 | STANDOFF, HEX, 8-32 5/8 LG BRASS | 6 |
| 25 | 204826 | SCREW, MACH, PNHD, PHLP, 4-40 5/8 LG | 2 |
| 26 | 204922 | WASHER, PLAIN, FIBRE, .755 ID | 4 |
| 27 | SP205295 | RELAY, SOLID STATE, AC, 250 VRMS 10 AM | 1 |
| 28 | 209326 | LOCK, CAM KEYED | 1 |
| 29 | 205511 | GUIDE, PCB CARD, 8 LG, FOR 1/16 THK | 4 |
| 30 | 207551 | CIRCUIT BREAKER, SINGLE POLE, 250 VAC | 1 |
| 31 | 205931 | FILTER, POWER LINE, RFI/EMI, 115/250 V | 1 |
| 32 | 206010 | VALVE, RELIEF, 1/8 NPT, .98 OVRAL LG | 1 |
| 33 | 206036 | BLOCK, TERMINAL, 3 POS, 10MM CTRS | 1 |
| 34 | 206037 | LABEL, STRIP, MARKING, L, N | 1 |
| 35 | 206041 | MUFFLER, AIR, PNEUMATIC EXHAUST | 1 |
| 36 | 209096 | BOOT, TOGGLE, SWITCH, M12 X 0.75MM T | 1 |
| 37 | 209327 | SWITCH, KEYLOCK, IP65 KEYBOARD | 1 |

| Complete EXCEL 2000 Printer Parts List (continued) (Refer to Figure 9-1, Figure 9-2, Figure 9-3, and Figure 9-4) | | | |
|---|--------------------|--|-----------------|
| Item | Part Number | Description | Quantity |
| 38 | 206048 | CAP, NON THREADED, 9 PIN 'D', BLACK | 1 |
| 39 | 206059 | SPACER, 5/16 OD X 11/64 ID X 5/8 LG | 3 |
| 40 | 206061 | FITTING, NUT AND SLEEVE, 1-11/32 LGTH | 6 |
| 41 | 206062 | MAGNET, PERMANENT, DOOR CATCH | 3 |
| 42 | 206063 | SCREW, MACH, PNHD, SLTD, 4-40 1/4 LG | 2 |
| 43 | 206143 | CLAMP, CABLE, .5 X 1 X .520 HI, BLACK | 2 |
| 44 | 206144 | CABLE, CLAMP, .625 X 1.25 X .780 HI | 1 |
| 45 | 206146 | CLAMP, CABLE, 0.5 X 1.250 X .690 HIGH | 3 |
| 46 | 206226 | SPACER, HEX, THREADED, 8-32 1 L | 2 |
| 47 | 210853 | TUBE CLAMP | 2 |
| 48 | 206299 | STANDOFF, ROUND THRD 8-32 X 3/4 L | 2 |
| 49 | 210852 | CORRUGATED TUBE | 1 |
| 50 | 206996 | NUT, LOCK, 1/2 CONDUIT, ZNC PLATED | 1 |
| 51 | 207270 | LATCH, VISE ACTION, WEATHER SEALED | 1 |
| 52 | 250077 | TIE, CABLE | 17 |
| 53 | 204498 | TUBING, POLYETHYLENE, 1/4 OD | 2.2 FT. |
| 54 | 351716 | GASKET, LOCK | 1 |
| 55 | SP355026 | POWER SUPPLY, DUAL H.V. | 1 |
| 56 | 355058 | BRACKET, POWER SUPPLY, TRPL OUTPUT | 1 |
| 57 | 355059 | BRACKET, POWER SUPPLY, AUX, 12V | 1 |
| 58 | 355121 | GASKET, CONNECTOR | 1 |
| 59 | 355123 | COVER, RELAY | 1 |
| 60 | 355135 | BRACKET, MOUNTING, BLOCK, TERMINAL, AS | 1 |
| 61 | 355137 | BRACKET, MOUNTING, CIRCUIT BREAKER, AS | 1 |
| 62 | 375031 | GASKET, SIDE, FLUIDS PAN | 2 |
| 63 | 375032 | GASKET, BOTTOM, FLUIDS PAN | 1 |
| 64 | 375033 | GASKET, TOP, FLUIDS PAN | 1 |
| 65 | 355143 | SHELF, SUPPORT | 1 |
| 66 | 355148 | PLUG, FITTING, BULKHEAD | 6 |
| 67 | 355317 | HARNESS, CONTROL, A.C. | 1 |
| 68 | 375010 | CABINET, IP65, ASSEMBLY | 1 |
| 69 | 356165 | HARNESS, D.C. AND SIGNAL | 1 |
| 70 | 356225 | HARNESS, DISTRIBUTION, A.C. | 1 |
| 71 | SP375xxx-xx | PCB, CONTROLLER, ASSY, (Refer to Control Board Chart on page 9-12.) | 1 |
| 73 | SP207415 | POWER SUPPLY, TRIPLE OUTPUT, DC SWITCH | 1 |

| Complete EXCEL 2000 Printer Parts List (continued) (Refer to Figure 9-1, Figure 9-2, Figure 9-3, and Figure 9-4) | | | |
|---|--------------------|--|-----------------|
| Item | Part Number | Description | Quantity |
| 76 | 207182 | LABEL, FCC COMPLIANCE, BLK PRNTNG | 1 |
| 80 | 202348 | CLAMP, CABLE FLAT, PLASTIC, 26-30 AWG | 4 |
| 85 | 206008 | BLOCK, TERMINAL, 5 POS PLUG, SCRW TP | 2 |
| 86 | 206188 | WASHER, PLAIN, .174 ID, SST | 10 |
| 87 | 353111 | PLATE, PATENT | 1 |
| 88 | 375027 | BRACKET, CONNECTOR | 1 |
| 89 | 355139 | COVER, A.C. | 1 |
| 90 | 355314 | HARNESS, INTERFACE, KEYBOARD, ASSY | 1 |
| 91 | 355315 | HARNESS, CONTROLLER, DISPLAY, ASSY | 1 |
| 92 | 356273 | LABEL, ATTENTION | 1 |
| 93 | 203634 | NUT, WING, 8-32 | 1 |
| 94 | 355327 | JUMPER, POWER SUPPLY | 1 |
| 100 | 371172 | LABEL, WARNING, ANTI-TIP, STAND, XL | 1 |
| 101 | 390572 | <i>EXCEL 2000 OPAQUE PRINTER ONLY:</i> BRACKET, INTERLOCK | 1 |
| 102 | 390578 | <i>EXCEL 2000 OPAQUE PRINTER ONLY:</i> CIRCULATOR PUMP LABEL | 1 |
| 103 | 390581 | <i>EXCEL 2000 OPAQUE PRINTER ONLY:</i> CIRCULATOR PUMP MAGNETIC SWITCH AND HARNESS | 1 |
| 104 | 212754 | <i>EXCEL 2000 OPAQUE PRINTER ONLY:</i> ACTUATOR MAGNET | 1 |
| 376 | SP205604 | LAMP, INCADESCENT, 14V PRD | 2 |
| 377 | SP375005-01 | KEYBOARD AND MOUNTING PLATE, XL, ENG, PKD | 1 |
| 377 | SP375005-02 | KEYBOARD AND MOUNTING PLATE, XL, FRN, PKD | 1 |
| 377 | SP375005-03 | KEYBOARD AND MOUNTING PLATE, XL, GER, PKD | 1 |
| 377 | SP375005-04 | KEYBOARD AND MOUNTING PLATE, XL, SPN, PKD | 1 |
| 377 | SP375005-05 | KEYBOARD AND MOUNTING PLATE, XL, POR, PKD | 1 |
| 377 | SP375005-06 | KEYBOARD AND MOUNTING PLATE, XL, JAP, PKD | 1 |
| 377 | SP375005-08 | KEYBOARD AND MOUNTING PLATE, XL, ITA, PKD | 1 |
| 377 | SP375005-09 | KEYBOARD AND MOUNTING PLATE, XL, DUT, PKD | 1 |
| 377 | SP375005-16 | KEYBOARD AND MOUNTING PLATE, XL, FIN, PKD | 1 |
| 377 | SP375005-17 | KEYBOARD AND MOUNTING PLATE, XL, SWD, PKD | 1 |
| 377 | SP375005-18 | KEYBOARD AND MOUNTING PLATE, XL, DAN, PKD | 1 |
| 378 | 375047-01 | POWER CORD, U.S.120V | 1 |
| 378 | 375047-02 | POWER CORD, 8 PLUG, EUROPEAN | 1 |
| 380 | 208305 | CABLE TIE MOUNT | 3 |
| 381 | 209219 | PLATE, PRESS TO RESET | 1 |
| 382 | SP356164 | DISPLAY, PCB, BACKLIT | 1 |

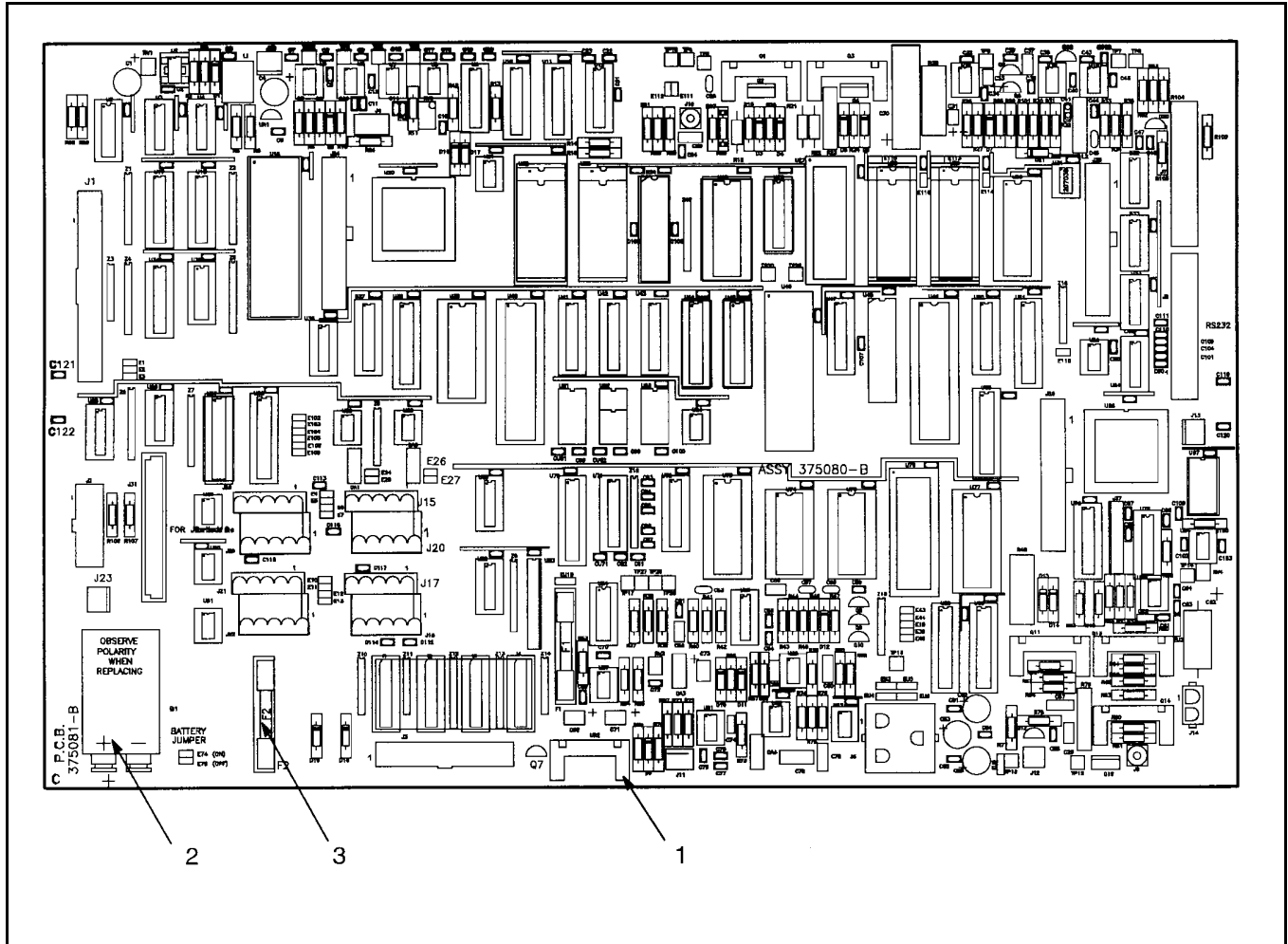


Figure 9-5. Control Board

| Control Board (Refer to Figure 9-5) | | | |
|-------------------------------------|-------------|---|----------|
| Item | Part Number | Description | Quantity |
| 1 | SP375080 | PCB, VERSION 6, ASSY-GENERIC BOARD WITHOUT SOFTWARE | 1 |
| 2 | 207156 | BATTERY, 9.0V, ALKALINE | 1 |
| 3 | 200163 | FUSE, NORMAL BLO, .05A 250V | 2 |

Note: Refer to the following page for a listing of all control boards available for ordering.

| EXCEL 2000 Control Boards | | | |
|---|-----------------------------|---|-------------------------------|
| Type 1 Printer Software: Two Serializers and the capacity for 56 messages with up to 128 character message length. | | | |
| EXCEL 2000 Printer | | EXCEL 2000 Printer with Auto Flush | |
| Board Part Number | Description/Language | Board Part Number | Description/Language |
| SP375600-01 | Type 1/US English | SP375610-01 | Type 1/US English, Auto Flush |
| SP375600-02 | Type 1/French | SP375610-02 | Type 1/French, Auto Flush |
| SP375600-03 | Type 1/German | SP375610-03 | Type 1/German, Auto Flush |
| SP375600-04 | Type 1/Spanish | SP375610-04 | Type 1/Spanish, Auto Flush |
| SP375600-05 | Type 1/Portuguese | SP375610-05 | Type 1/Portuguese, Auto Flush |
| SP375600-08 | Type 1/Italian | SP375610-08 | Type 1/Italian, Auto Flush |
| SP375600-09 | Type 1/Dutch | SP375610-09 | Type 1/Dutch, Auto Flush |
| SP375600-16 | Type 1/Finnish | SP375610-16 | Type 1/Finnish, Auto Flush |
| SP375600-17 | Type 1/Swedish | SP375610-17 | Type 1/Swedish, Auto Flush |
| SP375600-18 | Type 1/Danish | SP375610-18 | Type 1/Danish, Auto Flush |
| SP375600-19 | Type 1/Greek | SP375610-19 | Type 1/Greek, Auto Flush |
| SP375600-21 | Type 1/UK English | SP375610-21 | Type 1/UK English, Auto Flush |

| Type 2: Printer Software: One Serializer and the capacity for 224 messages with up to 62 character message length. | | | |
|---|-----------------------------|---|-------------------------------|
| EXCEL 2000 Printer | | EXCEL 2000 Printer with Auto Flush | |
| Board Part Number | Description/Language | Board Part Number | Description/Language |
| SP375605-01 | Type 2/US English | SP375615-01 | Type 2/US English, Auto Flush |
| SP375605-02 | Type 2/French | SP375615-02 | Type 2/French, Auto Flush |
| SP375605-03 | Type 2/German | SP375615-03 | Type 2/German, Auto Flush |
| SP375605-04 | Type 2/Spanish | SP375615-04 | Type 2/Spanish, Auto Flush |
| SP375605-05 | Type 2/Portuguese | SP375615-05 | Type 2/Portuguese, Auto Flush |
| SP375605-08 | Type 2/Italian | SP375615-08 | Type 2/Italian, Auto Flush |
| SP375605-09 | Type 2/Dutch | SP375615-09 | Type 2/Dutch, Auto Flush |
| SP375605-16 | Type 2/Finnish | SP375615-16 | Type 2/Finnish, Auto Flush |
| SP375605-17 | Type 2/Swedish | SP375615-17 | Type 2/Swedish, Auto Flush |
| SP375605-18 | Type 2/Danish | SP375615-18 | Type 2/Danish, Auto Flush |
| SP375605-19 | Type 2/Greek | SP375615-19 | Type 2/Greek, Auto Flush |
| SP375605-21 | Type 2/UK English | SP375615-21 | Type 2/UK English, Auto Flush |

EXCEL 2000 Opaque Control Boards

Type 1: Two Serializers and the capacity for 56 messages with up to 128 character message length.

| Board Part Number | Description/Language |
|-------------------|---------------------------|
| SP375620-01 | Type 1/US English, Opaque |
| SP375620-02 | Type 1/French, Opaque |
| SP375620-03 | Type 1/German, Opaque |
| SP375620-04 | Type 1/Spanish, Opaque |
| SP375620-05 | Type 1/Portuguese, Opaque |
| SP375620-08 | Type 1/Italian, Opaque |
| SP375620-09 | Type 1/Dutch, Opaque |
| SP375620-16 | Type 1/Finnish, Opaque |
| SP375620-17 | Type 1/ Swedish, Opaque |
| SP375620-08 | Type 1/Danish, Opaque |
| SP375620-19 | Type 1/Greek, Opaque |
| SP375620-21 | Type 1/UK English, Opaque |

Type 2: One Serializer and the capacity for 224 messages with up to 62 character message length.

| Board Part Number | Description/Language |
|-------------------|---------------------------|
| SP375625-01 | Type 2/US English, Opaque |
| SP375625-02 | Type 2/French, Opaque |
| SP375625-03 | Type 2/German, Opaque |
| SP375625-04 | Type 2/Spanish, Opaque |
| SP375625-05 | Type 2/Portuguese, Opaque |
| SP375625-08 | Type 2/Italian, Opaque |
| SP375625-09 | Type 2/Dutch, Opaque |
| SP375625-16 | Type 2/Finnish, Opaque |
| SP375625-17 | Type 2/Swedish, Opaque |
| SP375625-18 | Type 2/Danish, Opaque |
| SP375625-19 | Type 2/Greek, Opaque |
| SP375625-21 | Type 2/UK English, Opaque |

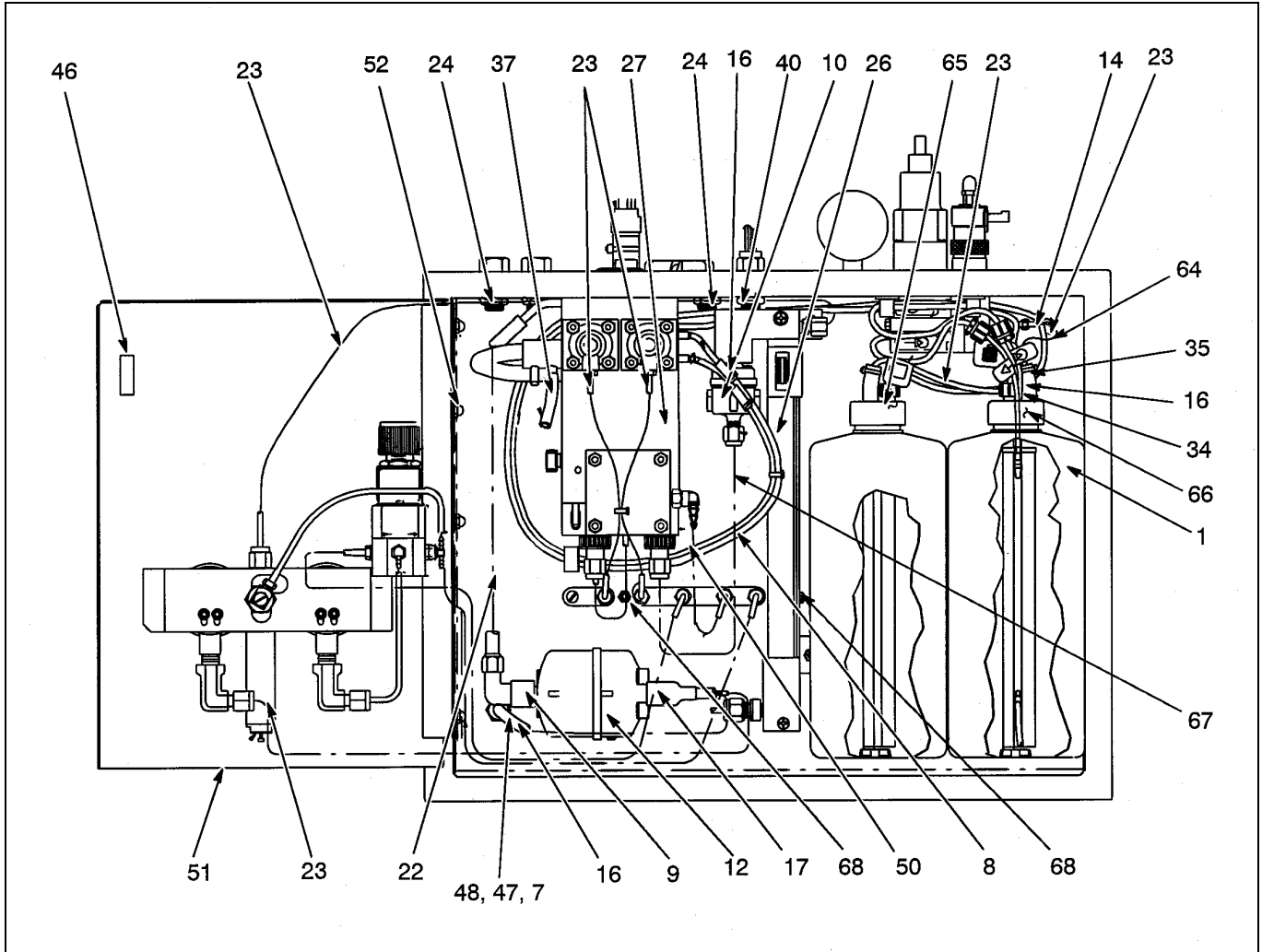


Figure 9-6. EXCEL[®] Hydraulic/Pneumatic Assembly, Sheet 1

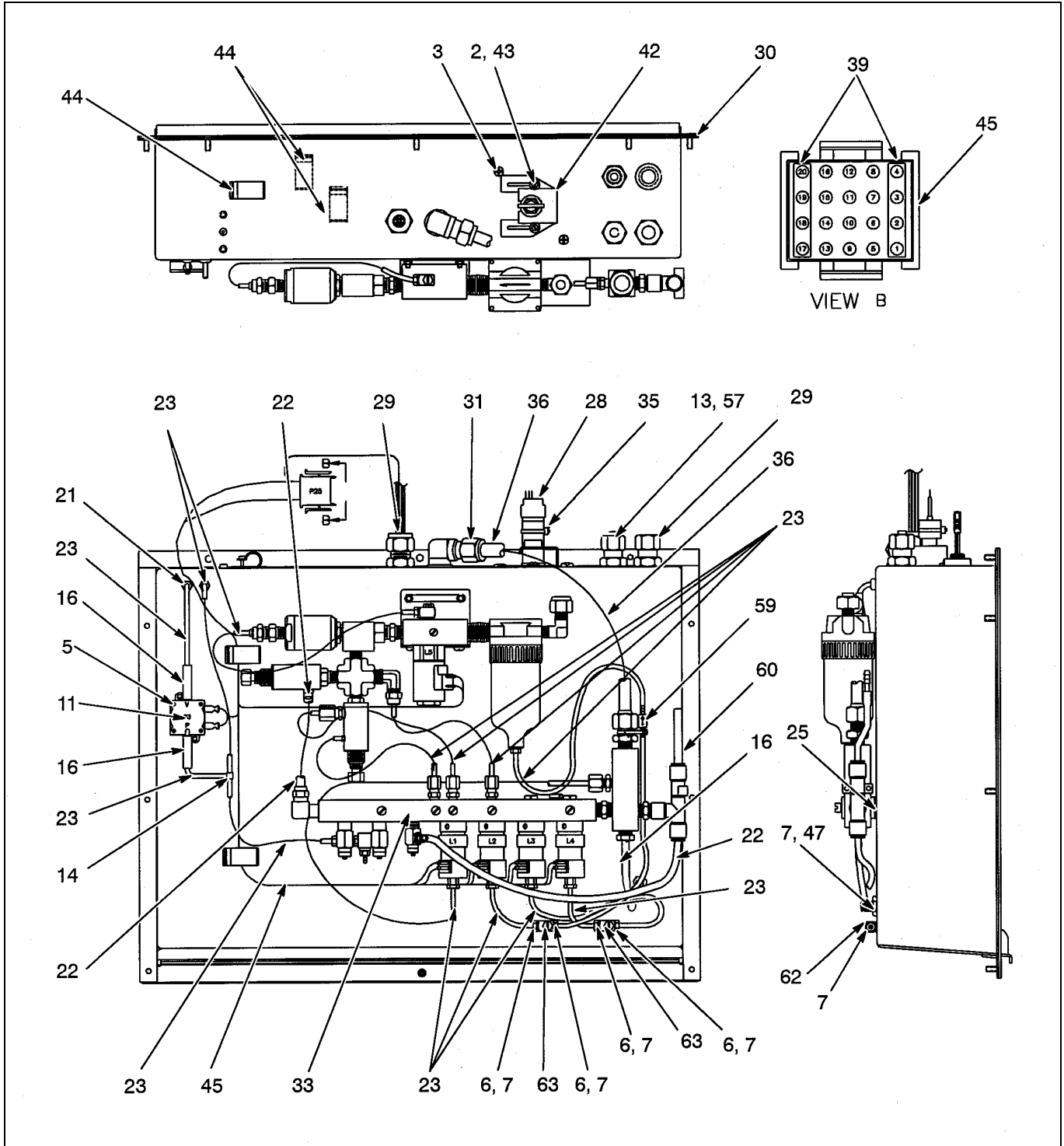


Figure 9-7. EXCEL[®] Hydraulic/Pneumatic Assembly, Sheet 2

| Hydraulic/Pneumatic Pan Assembly (Refer to Figure 9-6 and Figure 9-7) | | | |
|--|--------------------|--|-----------------|
| Item | Part Number | Description | Quantity |
| 1 | 090073 | BOTTLE (1 QT.) | 2 |
| 2 | 201576 | SCREW, MACH, 2A THD X 5/16 LG 4-40 | 2 |
| 3 | 100319 | SCREW, MACH, PNHD, POZ, 8-32 1/4 LG | 6 |
| 4 | 100326 | NUT, HEX, 10-32 | 2 |
| 5 | 209200 | MOUNTING CLIP W/2-SIDED TAPE | 1 |
| 7 | 212599 | GASKET, 3/16 ID | 48 |
| 8 | 202549 | TUBING, TEFLON, 1/16 ID | 3.42 FT. |
| 9 | 203303 | FITTING, TUBE, FML ELBOW, 1/4 OD | 1 |
| 10 | SP375007-01 | FILTER, INK, 20 MICRON ABSOLUTE | 1 |
| 11 | 204446 | SWITCH, PRESSURE, SPST | 15 |
| 12 | 204667 | FILTER, DISPOSABLE, 3 MICRON | 1 |
| 13 | 205986 | FITTING, TUBE, STRAIGHT, 1/4 DIA | 1 |
| 14 | 205987 | FITTING, TUBE, BARBED, 1/16 ID, "T" | 2 |
| 16 | 204615 | TUBING, EXTRUDED, 1/8 ID X 1/4 OD | 1.71 FT. |
| 17 | 205999 | TUBING, EXTRUDED, 3/16 ID X .313 OD, SLCN | .08 LG. |
| 19 | SP355151 | MANIFOLD, INPUT AIR | 1 |
| 21 | 250496 | GROMMET, RUBBER, .125 ID | 2 |
| 22 | 206889 | TUBING, EXTRUDED, .170 ID X .250 OD | 4.19 FT. |
| 23 | 251413 | TUBING, PLASTIC, 1/8 OD | 39.12 FT. |
| 24 | 205981 | FITTING, PIPE, LOCK NUT, 1/8 NPT, BRASS | 3 |
| 25 | 355074 | GASKET, MANIFOLD | 1 |
| 26 | SP390589 | INK CYLINDER AND SWITCH ASSEMBLY <i>(Refer to Figure 9-8 on page 9-18)</i> | 1 |
| 27 | | INK MODULE ASSEMBLY <i>(Refer to Figure 9-9 on Page 9-20, or to Figure 9-21 on Page 9-39)</i> | 1 |
| 28 | SP356038 | CAP AND STEM, MODULE, INK, ASSY <i>(Refer to Figure 9-10 on page 9-22)</i> | 1 |
| 29 | 206948 | FITTING, TUBE, STRAIGHT, 3/8 DIA | 1 |
| 30 | 371715 | PAN, FLUIDS, ASSY | 1 |
| 31 | 201199 | FITTING, TUBE, MALE ELBOW, 3/8 OD | 1 |
| 33 | SP375038 | MANIFOLD, ONE POSITION | 1 |
| 34 | 374637 | BARB, FILTER CAP, MALE LUER LOCK TO 1/8 BARB | 2 |
| 35 | 250077 | TIE CABLE | 1 |
| 36 | 203344 | TUBING, POLYETHYLENE, 3/8 OD | 1 |
| 37 | 356148 | TUBE, COUPLING | 1 |
| 39 | 205953 | JUMPER, COMMON, BAR 4 CRT. | 2 |

Hydraulic/Pneumatic Pan Assembly (continued) (Refer to Figure 9-6 and Figure 9-7)

| Item | Part Number | Description | Quantity |
|------|-------------|---|----------|
| 40 | 206765 | FITTING, PIPE, LOCK NUT, 1/4 NPSL | 2 |
| 42 | 356037 | BRACKET, SUPPORT, SW, REED | 1 |
| 43 | 193756 | WASHER, FLAT, 0.031 x 0.125 ID | 1 |
| 44 | 206143 | CLAMP, CABLE, 0.625 X 0.125 X 0.780 OD | 1 |
| 45 | 355316 | HARNESS, HYDRAULIC, ASSY | 1 |
| 46 | 206407 | PLATE, STRIKER, DOOR, ADHSV | 1 |
| 47 | 201867 | FITTING, TUBE, BARB, 1/8 ID | 2 |
| 48 | 201871 | FITTING, TUBE, BULKHEAD UNION | 1 |
| 50 | 204499 | TUBE, TEFLON, .032 ID X .125 OD | 3 FT. |
| 51 | SP374535 | DOOR, GAUGE, ASSY | 1 |
| 52 | 206417 | NUT, ACORN, 8-32, STNLS STL | 4 |
| 54 | 101234 | CLAMP, HOSE | 1 |
| 57 | 209449 | CAP, .25 OD X .50 LONG | 1 |
| 59 | 209051 | RESTRICTOR ORIFICE | 1 |
| 60 | 204496 | TUBING, EXTRUDED, 0.170 ID X 250 OD, BLACK | 2.2 FT. |
| 63 | 205983 | FITTING, TUBE, ADJ T M/MFL 10-32 | 2 |
| 64 | 212645 | FITTING, TUBE, 1/16 BARBED ELBOW | 1 |
| 65 | SP374551 | BOTTLE FILTER (MAKE-UP) | 1 |
| 66 | SP374551 | EXCEL 2000 PRINTER ONLY: BOTTLE FILTER (INK) | 1 |
| | SP374802 | EXCEL 2000 OPAQUE PRINTER ONLY: BOTTLE FILTER (INK) | 1 |
| 67 | 390593 | TUBE, TRANSFER .032 ID | 1 |
| | 390592 | TUBE, TRANSFER .067 ID | 1 |
| 68 | 208759 | NUT, HEX MACHINE SCREW, 8-32, WAXED | 2 |

| <i>In bag of items included with printer:</i> | | | |
|---|--------|---|---------|
| | 186514 | KEY, HEX, .050 | 1 |
| | 186975 | KEY, HEX, 5/16, SHORT ARM | 1 |
| | 203343 | TUBING, POLYETHEYLENE, 1/8 OD | .83 FT. |
| | 355269 | MAGNIFIER, LOUPE SUB, ASSY | 1 |
| | 374813 | EXCEL 2000 OPAQUE PRINTER ONLY: PUMP, CIRCULATOR, FLUSHING LINE ASSY. | 3 FT. |

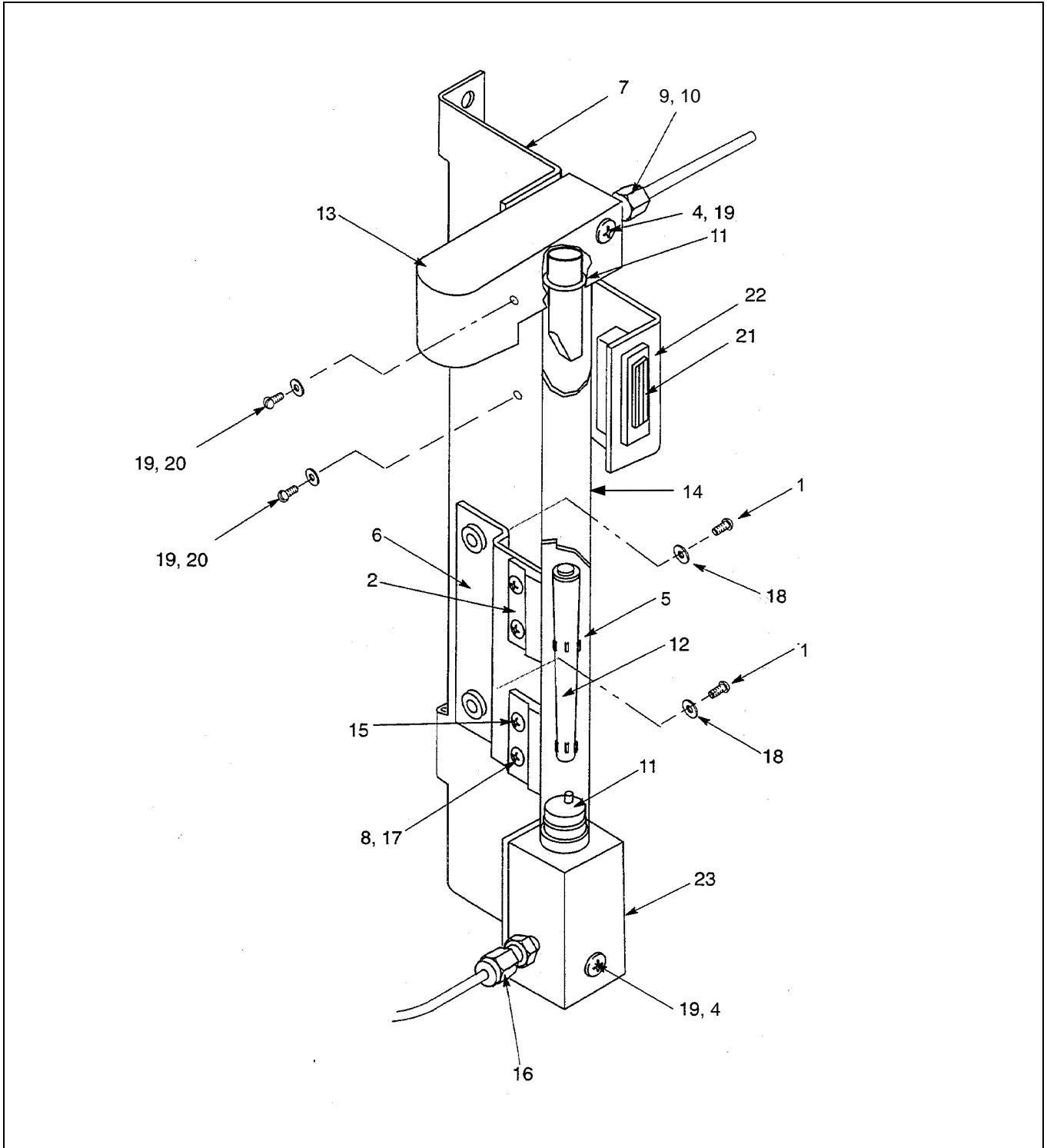


Figure 9-8. Ink Cylinder and Switch Assembly (SP390589)

| Complete Ink Cylinder and Switch Assembly (SP390589) (Refer to Figure 9-8) | | | |
|---|--------------------|---------------------------------------|-----------------|
| Item | Part Number | Description | Quantity |
| 1 | 100319 | SCREW, MACH, PNHD, POZ, 8-32 1/4 LG | 2 |
| 2 | 356168-01 | SWITCH, PRESSURE TANK, S4, ASSY | 1 |
| 4 | 205886 | SCREW, MACH, PNHD, POZ, 6-32 1-1/8 LG | 2 |
| 5 | 205811 | TUBING, TEFLON, .500 ID | .63 FT. |
| 6 | 355094 | BRACKET, SWITCH, ASSY | 1 |
| 7 | 356003 | BRACKET, MOUNTING, TANK, PRESS, ASSY | 1 |
| 8 | 110213 | SCREW, MACH, PNHD, POZ, 4-40 5/16 LG | 4 |
| 9 | 204476 | FITTING CONNECTOR, TBNG, 10-32 1/8 TB | 1 |
| 10 | 212599 | GASKET, 3/16 ID | 1 |
| 11 | 205819 | O RING, .364 ID | 2 |
| 12 | SP355034 | FLOAT, PRESSURE TANK, ASSEMBLY | 1 |
| 13 | SP390586 | CAP, O-RING, PRESSURE TANK | 1 |
| 14 | 356008 | SHIELD, PRESSURE TANK | 1 |
| 15 | 356168-02 | SWITCH, PRESSURE TANK, S5, ASSY | 1 |
| 16 | 203473 | FITTING, TUBE, ML CNNCTR, 1/8 OD | 1 |
| 17 | 193499 | WASHER, FLAT, .025 X .125 ID | 4 |
| 18 | 190341 | WASHER, FLAT, .032 X .203 ID | 2 |
| 19 | 201160 | WASHER, FLAT, .153 ID | 4 |
| 20 | 100357 | SCREW, MACH, PNHD, POZ, 6-32 1/4 LG | 2 |
| 21 | 206062 | MAGNET, PERMANENT, DOOR CATCH | 1 |
| 22 | 355290 | BRACKET, MAGNET, WELDMENT | 1 |
| 23 | SP356007 | CAP, SUB, RESTRICTOR, ASSY | 1 |

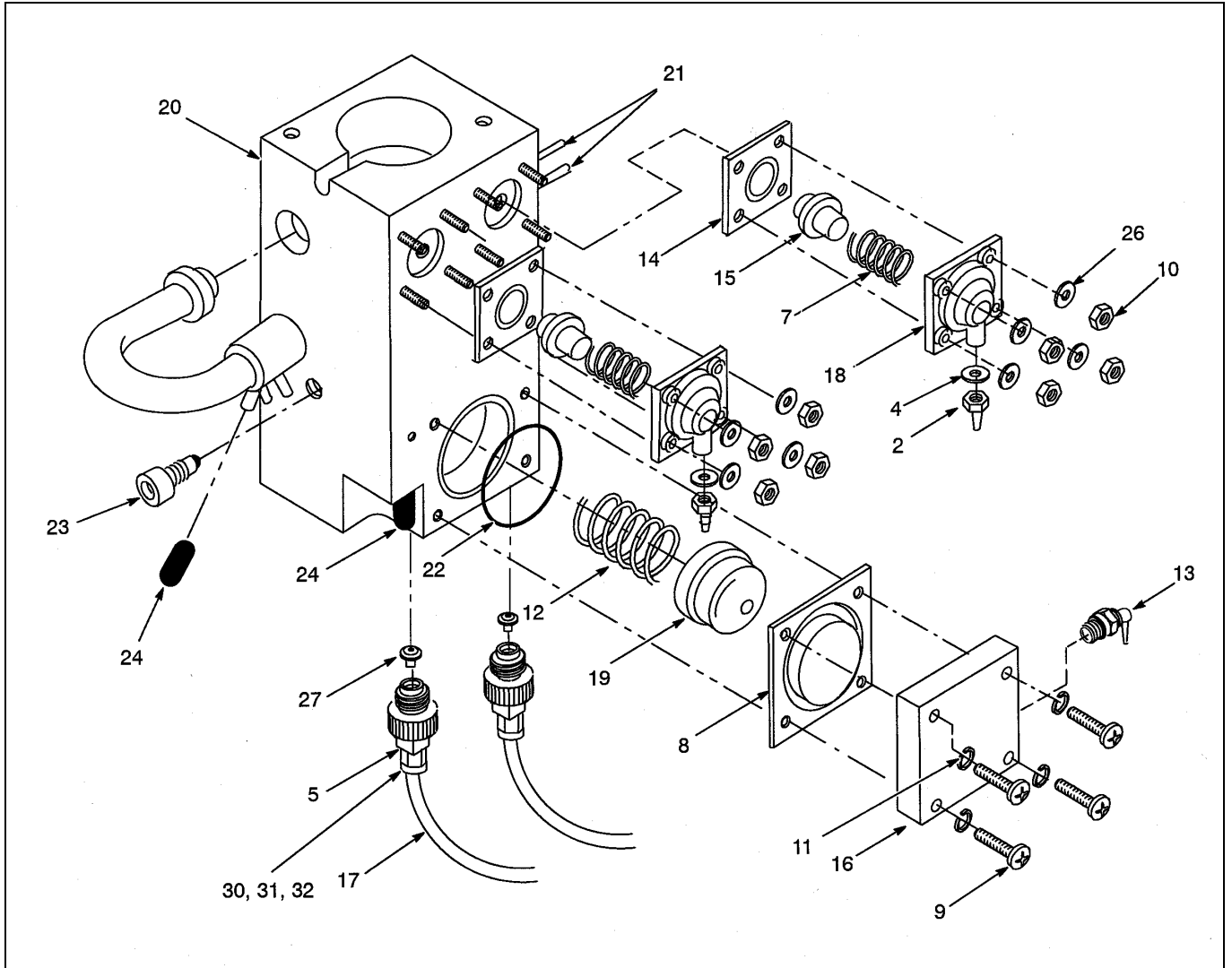


Figure 9-9. Ink Module Assembly (P/N SP390579)

| Ink Module Assembly (SP390579) (Refer to Figure 9-9) | | | |
|---|----------|----------------------------------|----------|
| 2 | 209160 | FITTING, TUBE | 2 |
| 4 | 212599 | GASKET SEAL EP | 2 |
| 5 | 374809 | FITTING, CHECK VALVE | 2 |
| 7 | SP355342 | SPRING COMPRESSION | 2 |
| 8 | SP207016 | DIAPHRAGM, ROLLING, 2.00 IN. SQ. | 1 |
| 9 | 205826 | SCREW, 8-32X .87 | 4 |
| 10 | 208760 | NUT, MACH SCREW | 8 |
| 11 | 206430 | WASHER, LOCK, | 4 |
| 12 | SP205978 | SPRING, COMPRESSION, 2-1/2 LG | 1 |
| 13 | 208302 | SWIVEL, BARBED, ELBOW, FITTING | 1 |
| 14 | SP355611 | DIAPHRAGM, VALVE, ADDER | 2 |
| 15 | 355609 | PUSHER, ADDER | 2 |
| 16 | 355046 | CAP, DOMED | 1 |
| 17 | 202549 | TUBING, TEFLON | 3.25 IN. |
| 18 | 355606 | CAP, ADDER VALVE | 2 |
| 19 | 375003 | PISTON, PUMP | 1 |
| 20 | 390590 | INK MODULE | 1 |
| 21 | 206728 | TUBING, EXTRUDED (QUANTITY OF 2) | .25 IN. |
| 22 | 207015 | O RING, 1.540 I | 1 |
| 23 | SP374563 | PLUG, DRAIN | 1 |
| 24 | 206840 | CAP, NON TREADED | 2 |
| 26 | 193499 | WASHER, FLAT | 8 |
| 27 | 207407 | VALVE, COMBINATION | 2 |
| 30 | 203322 | TUBE, FERRULE, FRONT | 2 |
| 31 | 203323 | TUBE, FERRULE, BACK | 2 |
| 32 | 203324 | TUBE, NUT | 2 |

Note: The complete ink module assembly comes with the cap and stem assembly, P/N SP356038 (refer to Page 9-22).

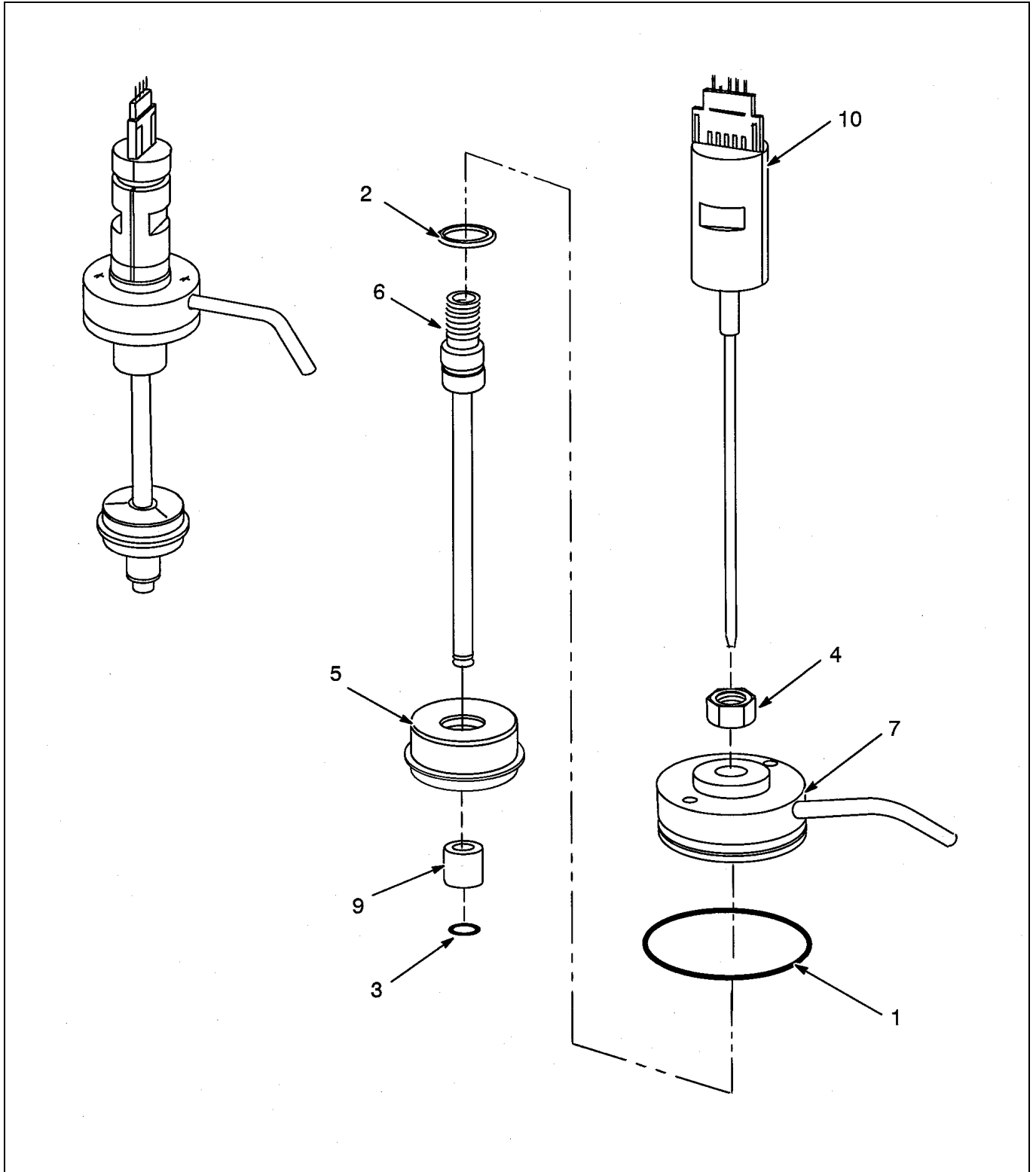


Figure 9-10. Cap and Stem Assembly (P/N SP356038)

| Complete Cap and Stem Assembly (P/N SP356038) (Refer to Figure 9-10) | | | |
|---|--------------------|----------------------------------|-----------------|
| Item | Part Number | Description | Quantity |
| 1 | 205816 | O RING, 1.234 ID, BUTYL | 1 |
| 2 | 205820 | O RING, .238 ID, BUTYL, LG STEM | 1 |
| 3 | 205821 | O RING, .145 ID, BUTYL, SM STEM | 1 |
| 4 | 001834 | NUT, HEX, JAM, 5/16-24 | 1 |
| 5 | SP355037 | FLOAT, BUFFER, ASSY | 1 |
| 6 | 355042 | STEM, LONG (3.594 X .17 DIA) | 1 |
| 7 | 356039 | CAP AND INSERT, INK MODULE, ASSY | 1 |
| 9 | 355109 | SPACER, MODULE FLOAT | 1 |
| 10 | 355114 | PCB, REED SW. SUPPORT | 1 |

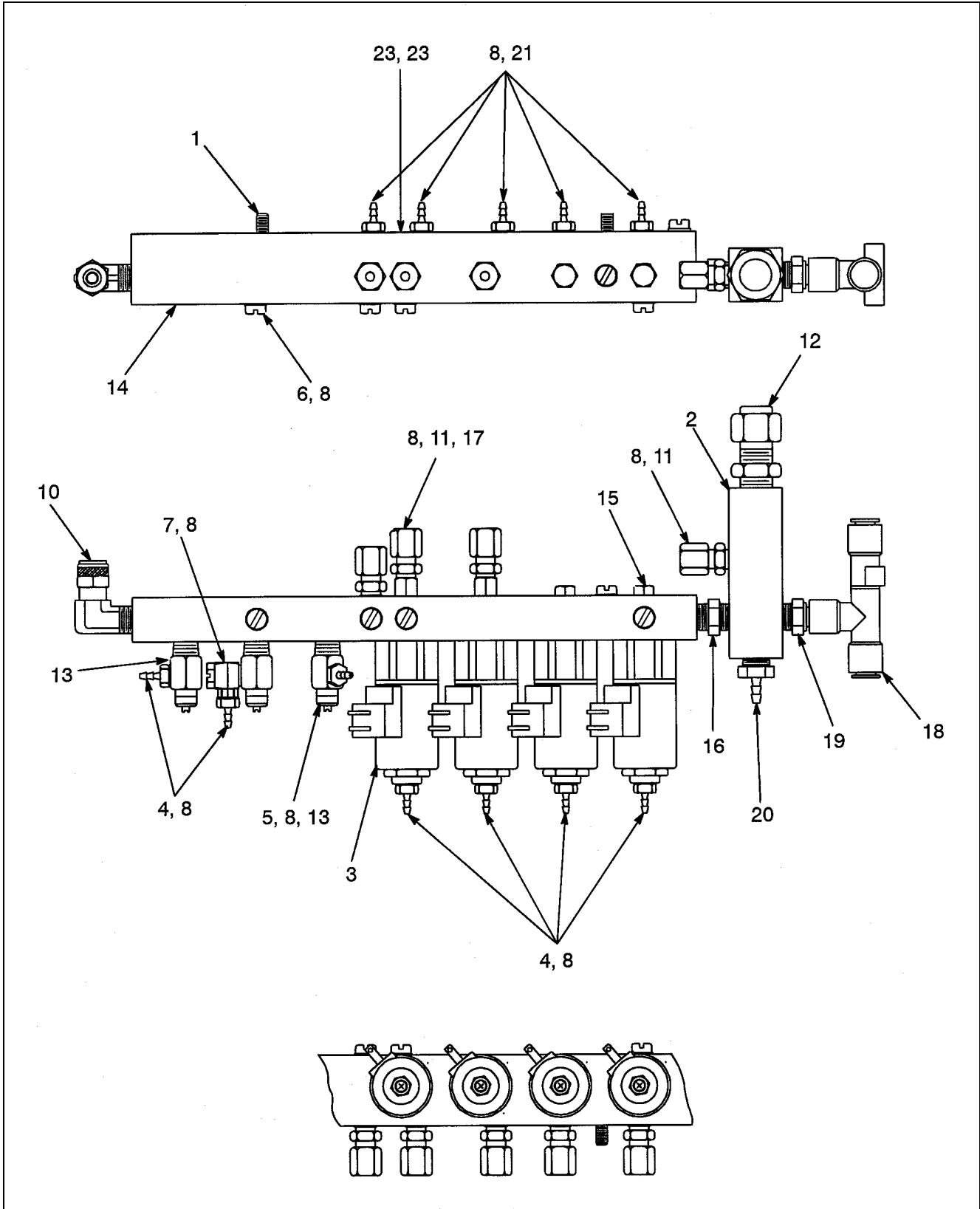


Figure 9-11. Air Manifold Assembly (P/N 375038)

| Air Manifold Assembly (P/N 375038) (Refer to Figure 9-11) | | | |
|--|--------------------|---|-----------------|
| Item | Part Number | Description | Quantity |
| 1 | 130036 | SCREW, SET, HEX, 8-32 1/2 LG | 2 |
| 2 | SP371612 | MANIFOLD, SUB, ASSY | 1 |
| 4 | 201844 | FITTING, TUBE, BARB, 1/16 X 10-32 M | 6 |
| 5 | 201867 | FITTING, TUBE, BARB, 1/8 ID | 1 |
| 6 | 201868 | FITTING, TUBE, PLUG, 5/32 | 6 |
| 7 | 201870 | FITTING, TUBE, ELBOW, ADJ, 10-32 | 1 |
| 8 | 212599 | GASKET, 3/16 ID | 48 |
| 10 | 209183 | FITTING, TUBE, MALE ELBOW, 1/4 OD | 1 |
| 11 | 204476 | FITTING CONNECTOR, TUBING, 10-32 1/8 TUBE | 9 |
| 12 | 201864 | FITTING, TUBE, MALE CONNECTOR, 1/8 NPT | 1 |
| 13 | 210606 | VALVE, NEEDLE, ADJ, 1/8-27 NPT, MALE | 3 |
| 14 | 355073 | MANIFOLD, AIR | 1 |
| 15 | 208199 | FITTING, STUD, VALVE, N.C. | 2 |
| 16 | 210865 | FITTING, PIPE, NIPPLE, STL, 1/8 NPT | 1 |
| 17 | 208200 | FITTING, STUD, VALVE | 2 |
| 18 | 208267 | ASPIRATOR, AIR, 26 IN HG MAX | 1 |
| 19 | 209053 | FITTING, ADAPTER, TUBE | 1 |
| 20 | 201383 | FITTING, TUBE, BARB .125 ID | 1 |
| 22 | 374611 | O-RING .029 ID EPDM | 1 |
| 23 | 374610 | ORIFICE BLEED 6-32, .0016 | 1 |
| 24 | SP206429 | SOLENOID | 4 |

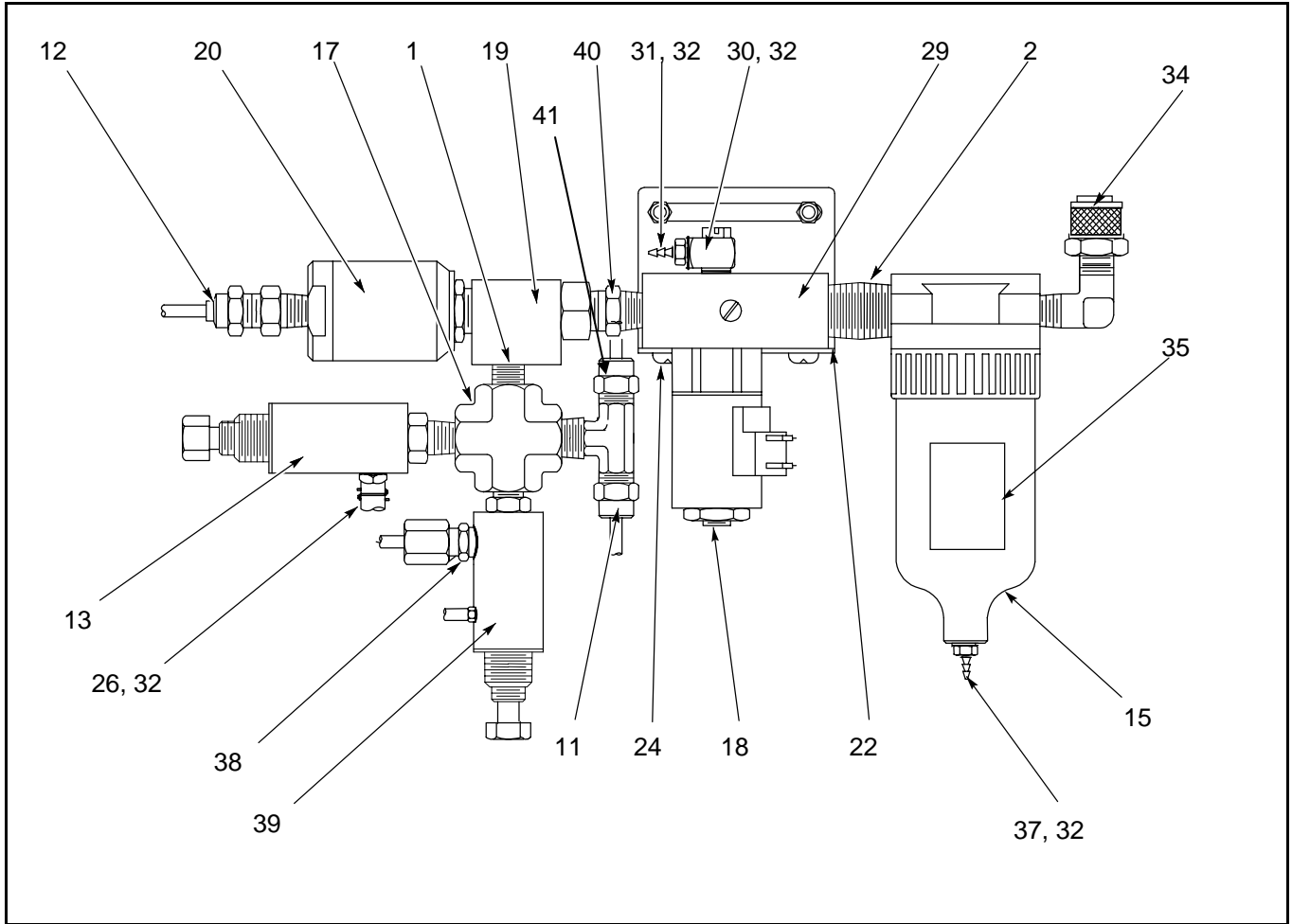


Figure 9-12. Input Air Manifold Assembly (P/N 355151)

| Input Air Manifold Assembly (P/N 355151) (Refer to Figure 9-12) | | | |
|--|--------------------|---|-----------------|
| Item | Part Number | Description | Quantity |
| 1 | 201296 | FITTING, PIPE, .125 | 1 |
| 2 | 201297 | FITTING, PIPE, .250 | 1 |
| 11 | 209027 | FITTING, TUBE, MALE "T" ELBOW, 1/8 OD | 1 |
| 12 | 203292 | FITTING, TUBE, MALE CONNECTOR, 1/8 OD | 1 |
| 13 | 205995 | REGULATOR, AIR, ADJ, 10-32 1/8-27 NPT | 2 |
| 15 | 203808 | FILTER, AIR, .03 MICRON, W/HOUSING | 1 |
| 17 | 205979 | FITTING, PIPE, CROSS, FEMALE, 1/8 NPT | 1 |
| 18 | SP205991 | VALVE, SOLENOID, 3 WAY, 12V DC, NC | 1 |
| 19 | 205992 | VALVE, POPPET, AIR/WATER/OIL, 2 WAY | 1 |
| 20 | 205993 | ACCESSORY, VALVE, AIR PILOT OP, 15-32 | 1 |
| 22 | 355054 | BRACKET, MANIFOLD | 1 |
| 24 | 110246 | SCREW, MACH, PNHD, POZ, 8-32 5/16 LG | 2 |
| 26 | 201867 | FITTING, TUBE, BARB, 1/8 ID | 1 |
| 28 | 371718 | BRACKET, MANIFOLD | 1 |
| 29 | 374543 | MANIFOLD, ONE POSITION | 1 |
| 30 | 201807 | FITTING, TUBE ELBOW | 3 |
| 31 | 201844 | FITTING, TUBE, BARB 1/16 X 10-32 M | 1 |
| 32 | 212599 | GASKET, 3/16 ID | 2 |
| 34 | 209182 | FITTING, TUBE, ML ELBOW, 1/4 OD | 1 |
| 35 | 203115 | FILTER | 1 |
| 37 | 371623 | FITTING, BARB | 1 |
| 38 | 204476 | FITTING CONNECTOR, TUBING, 10-32 1/8 TUBE | 2 |
| 39 | 374609 | REGULATOR, TRANSFER 10-32 1/8-27 NPT | 1 |
| 40 | 201865 | FITTING, PIPE, NIPPLE, 1/8 NPT | 1 |
| 41 | 343393 | EXCEL 2000 OPAQUE ONLY: PLUG | 1 |

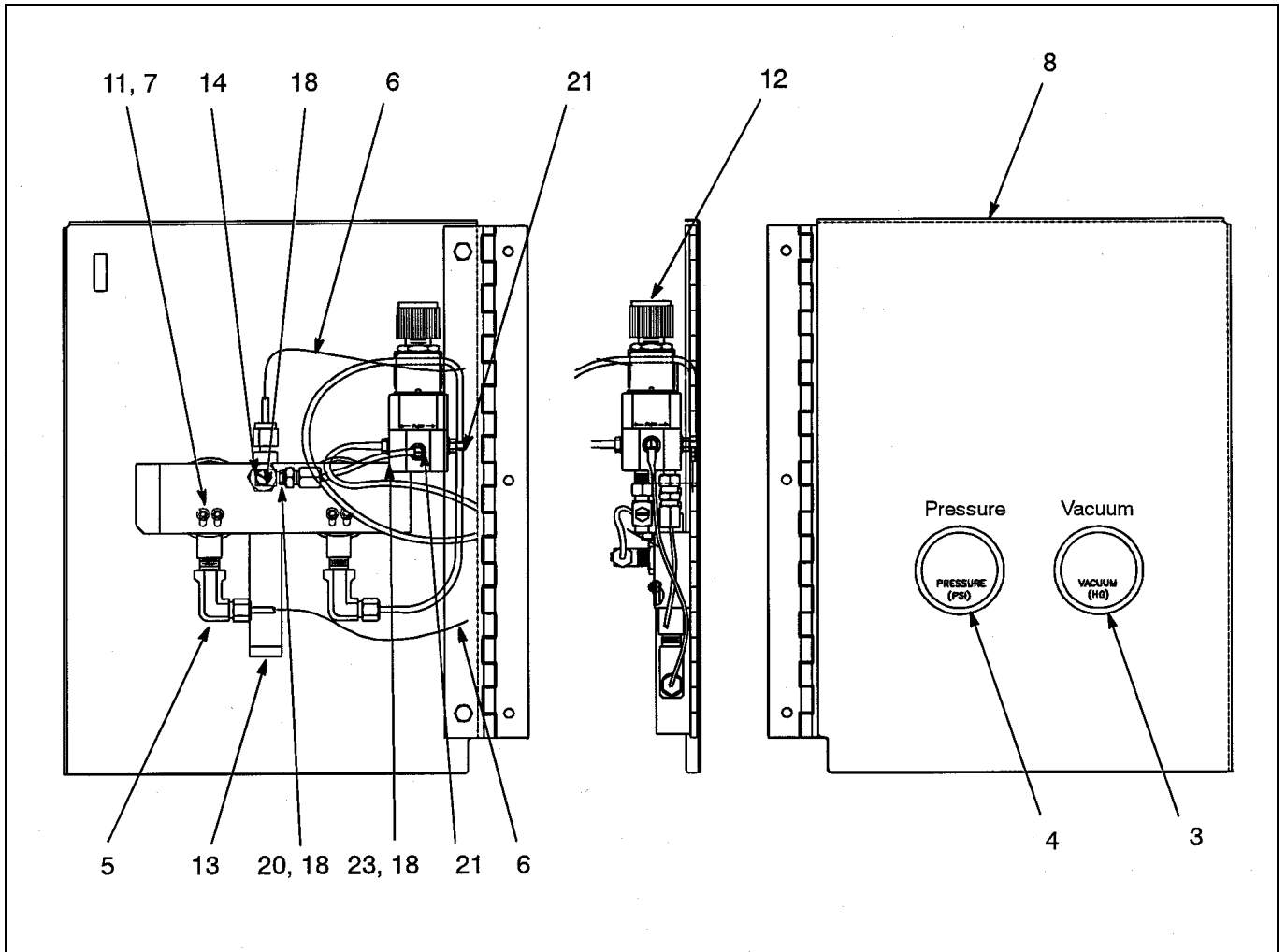
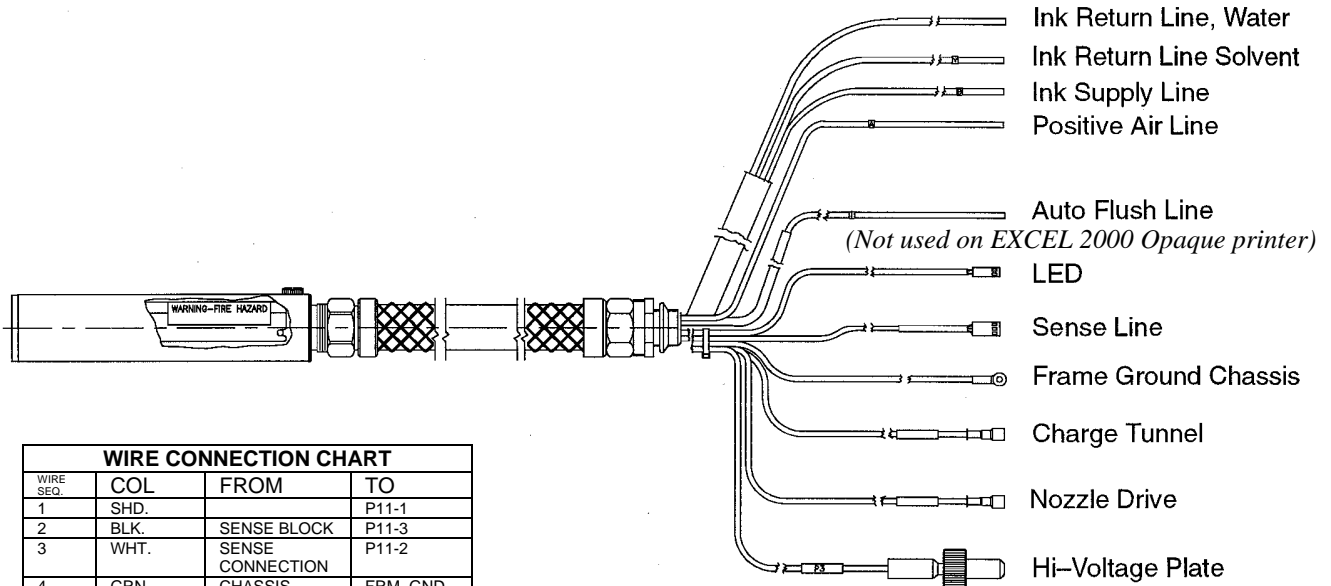


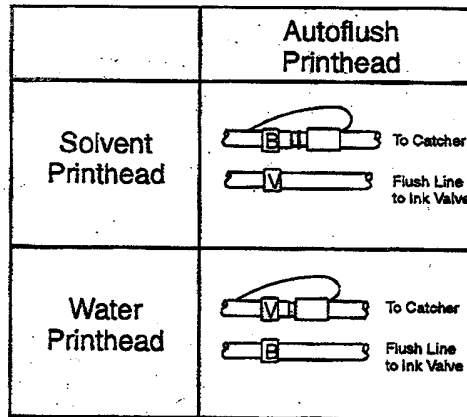
Figure 9-13. Gauge Door Assembly (SP374535)

| Gauge Door Assembly (SP374535) (Refer to Figure 9-13) | | | |
|--|--------------------|--|-----------------|
| Item | Part Number | Description | Quantity |
| 3 | 209152 | GAUGE, VACUUM, 0-30 HG, BTM MNT | 1 |
| 4 | 209151 | GAUGE, PRESSURE, 0-100 PSIG, 1/8 NP | 1 |
| 5 | 206318 | FITTING, TUBE, ELBOW 1/8 O.D. | 2 |
| 6 | 251413 | TUBING, PLASTIC, 1/8 OD | 3 |
| 7 | 207112 | NUT, HEX, 4-40 .062 HIGH | 4 |
| 8 | 374541 | DOOR, GAUGE, SST, WELDMNT | 1 |
| 11 | 193499 | WASHER, FLAT, .025 X .125 ID | 8 |
| 12 | SP370682 | REGULATOR, PRESSURE, ASSY | 1 |
| 13 | SP356015 | TRAP, ASSY | 1 |
| 14 | 205981 | FITTING, PIPE, LOCK NUT 1/8 NPT, BRASS | 1 |
| 17 | 201870 | FITTING, ELBOW | 1 |
| 18 | 212599 | GASKET, 3/16 ID | 2 |
| 20 | 204476 | FITTING, CONNECTOR | 1 |
| 21 | 208302 | BARBED SWIVEL ELBOW | 1 |
| 22 | 208303 | BARB TEE | 1 |
| 23 | 209160 | STAINLESS STEEL BARB | 1 |

| Printhead Assemblies | |
|----------------------|--------------------------------------|
| PART NO: | DESCRIPTION |
| SP390520-01 | PRINTHEAD, WASH DN, 1-3 LINE, AF, W |
| SP390520-02 | PRINTHEAD, WASH DN, 1-3 LINE, AF, S |
| SP390585 | PRINTHEAD, WASH DN, 1-3 LINE, OPAQUE |
| 375055 | 2000 Printhead Cover, 1-3 Line |
| 375094 | Cover Printhead Washdown |



| WIRE CONNECTION CHART | | | |
|-----------------------|-------|------------------|--------------|
| WIRE SEQ. | COL | FROM | TO |
| 1 | SHD. | | P11-1 |
| 2 | BLK. | SENSE BLOCK | P11-3 |
| 3 | WHT. | SENSE CONNECTION | P11-2 |
| 4 | GRN. | CHASSIS GROUND | FRM. GND. |
| 5 | COAX. | CHARGE TUNNEL | P9 |
| 6 | CLEAR | TB2-2 | P10 |
| 7 | SHD | TB2-1 | |
| 8 | | | |
| 9 | BLK. | LED-C | P12-2 |
| 10 | RED | LED-1 | P12-1 |
| 11 | WHT. | H.V. PLATE | P3 |
| 12 | - | FITTING | CABINET GND. |



NOTE: The Auto Flush line is not used on the EXCEL 2000 Opaque printer.

- NOTES:
- 1) PRESSING HIGH VOLTAGE PLATE FIRMLY AGAINST GAGE, P/N 186976. TIGHTEN SCREWS WHICH HOLD PLATE TO ARM. PLATE SHOULD "JUST TOUCH" THE SURFACE OF THE GAGE.
 - 2) FOR SOLVENT VERSION CONNECT INK RETURN LINE "B" TO CABLE & DUCT ASSEMBLY RETURN TUBE USING BARB FITTING, ITEM 164. LINE "B" FITS SMALLER BARB OF FITTING AS SHOWN IN DETAIL "E."
 - 3) FOR WATER BASE VERSION CONNECT INK RETURN LINE "V" TO CABLE & DUCT ASSEMBLY RETURN TUBE USING BARB FITTING, ITEM 164. LINE "V" FITS LARGER BARB OF FITTING AS SHOW IN DETAIL "E."

Figure 9-14. Printhead Assembly

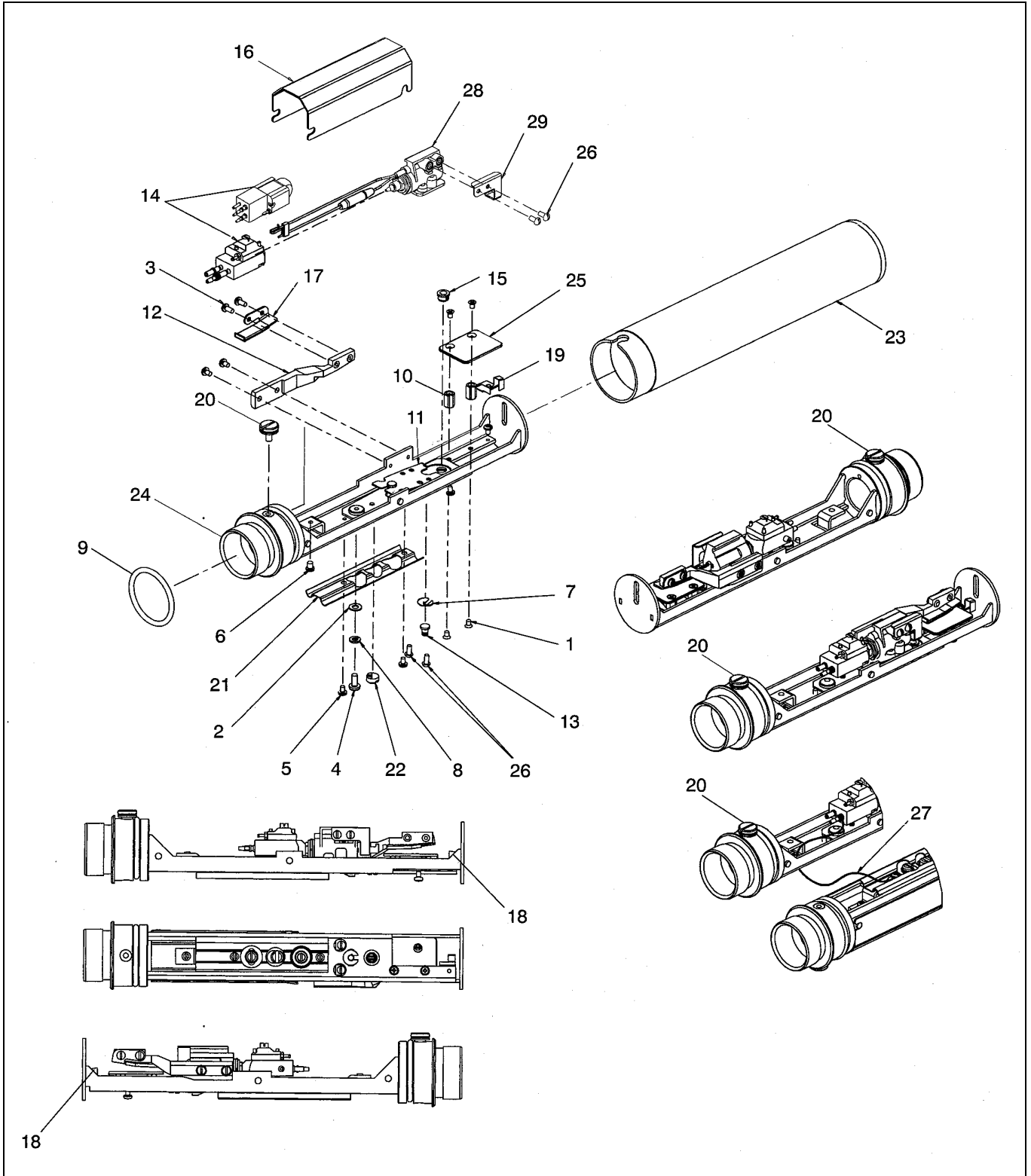


Figure 9-15. Printhead Assembly Detail

| Printhead Assembly Detail (Refer to Figure 9-15) | | | |
|---|--------------------|---|-----------------|
| Item | Part Number | Description | Quantity |
| 1 | 112700 | SCREW, MACH, FLT HD, PHIL, 2-56 | 4 |
| 2 | 193499 | WASHER, FLAT, .025 X .125ID | 1 |
| 3 | 201397 | SCREW, MACH, PNHD, SLTD, 2-56, 3/16 LG | 2 |
| 4 | 201613 | SCREW, MACH, PNHD, SLTD, 2-56, 3/16 LG | 1 |
| 5 | 202505 | SCREW, MACH, PNHD, SLTD, 2-56, 1/8 LG | 6 |
| 6 | 202770 | SCREW, MACH, PNHD, SLTD, 4-40, 1/8 LG | 1 |
| 7 | 206221 | RING, RETAINING, PRONG-LOCK, .125 ID | 1 |
| 8 | 206313 | WASHER, LOCK, SPLIT RING, #4, .115 ID | 1 |
| 9 | 209705 | O-RING, I, .055 ID, EPDM | 1 |
| 10 | 355182 | STAND-OFF, GROUND PLATE | 2 |
| 11 | 355186 | PLATFORM WELDMENT ASSEMBLY | 1 |
| 12 | 355199 | ARM ASSY, H.V. PLATE 7 DEGREE | 1 |
| 13 | 355220 | PIVOT, PLATFORM | 1 |
| 14 | SP371019 | <i>EXCEL 2000 PRINTER ONLY:</i> CONTROL VALVE, INK/AUTO FLUSH ASSY. | 1 |
| | SP355198 | <i>EXCEL 2000 OPAQUE PRINTER ONLY:</i> CONTROL VALVE, INK ASSY. | 1 |
| 15 | 355974 | CLIP, LED | 1 |
| 16 | 356664 | COVER, CHASSIS, UHS | 1 |
| 17 | 356725 | H.V. PLATE ASSY | 1 |
| 18 | SP356858 | CATCHER, GULLET, PLASTIC | 1 |
| 19 | 356859 | STRAP, GROUNDING | 1 |
| 20 | 370068 | SCREW, SHOULDER, M3 | 1 |
| 21 | 374514 | CLIP, RETAINER | 1 |
| 22 | 374530 | ECCENTRIC-HORIZONTAL ADJUST | 1 |
| 23 | 375055 | COVER, 1-3 LINE PH | 1 |
| 24 | 390517 | DECK, WASH DOWN PRINT HD | 1 |
| 25 | 390039 | GROUND PLATE, 1.09 LG | 1 |
| 26 | 204563 | SCREW, MACH, RND HD, 2-56 X 3/16" LG | 1 |
| 27 | 363022 | WIRE, GROUND, 24GA, GREEN, ASSY | 1 |
| 28 | SP371675 | NOZZLE, 66μ, ASSEMBLY | 1 |
| 29 | 390019 | CHARGE TUNNEL, .368 LONG | 1 |

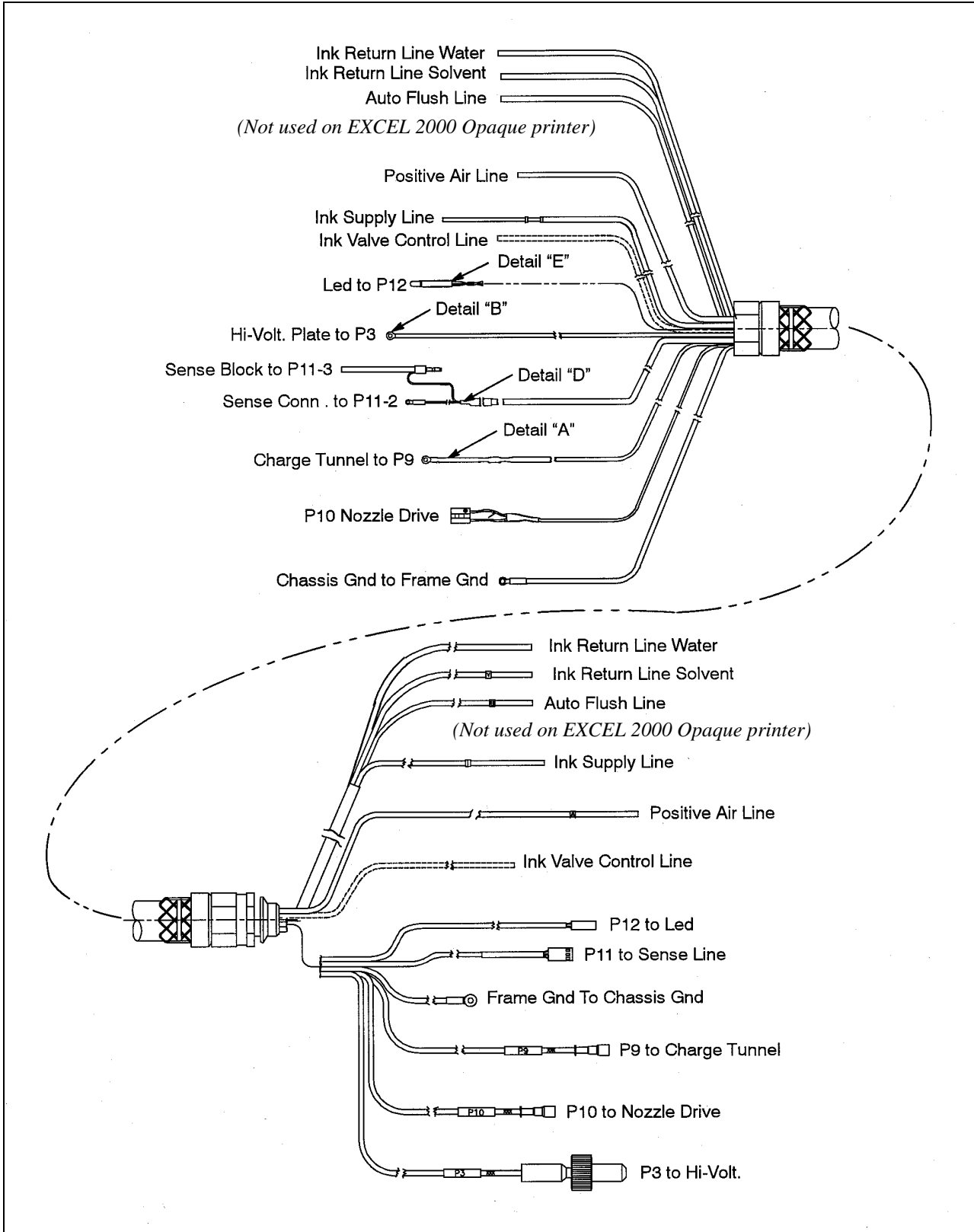


Figure 9-16. Cable and Duct Assembly

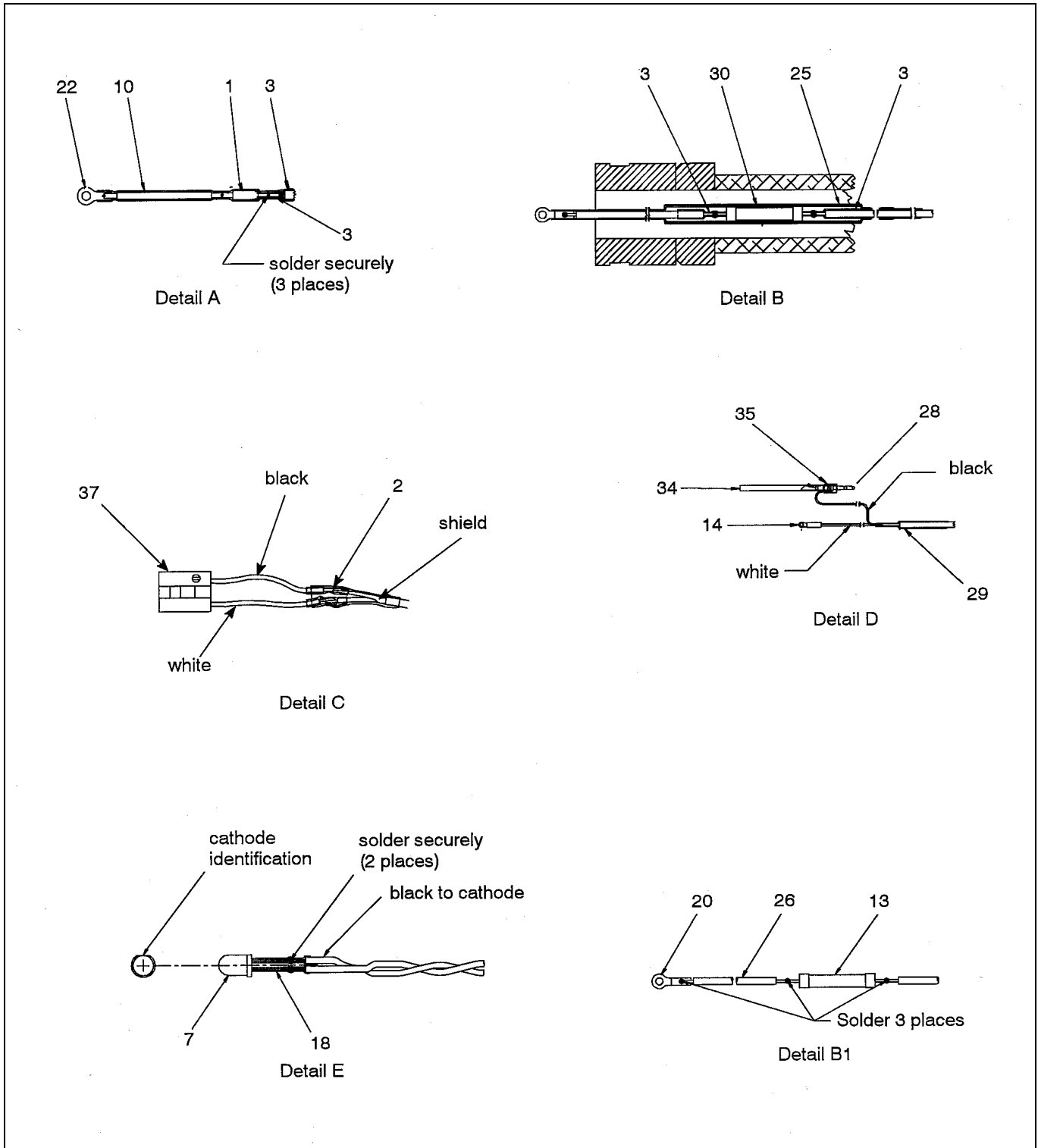


Figure 9-17. Cable and Duct Assembly Detail

| Cable and Duct Assembly - Parts List (Refer to Figure 9-16 and Figure 9-17) | | | |
|--|--------------------|--|-----------------|
| Item | Part Number | Description | Quantity |
| 1 | 200419 | RESISTOR, FCF, 10K OHM 1/4W | 1 |
| 2 | 200785 | TUBING, SHRINK, .125 ID | 1 |
| 3 | 206174 | TUBING, SHRINK, .125 ID, BLACK | 1 |
| | 202549 | TUBING, TEFLON, 1/16 ID – INK SUPPLY LINE | 23 |
| | 203339 | TUBING, POLYALLOMER, 1/8 OD – POSITIVE AIR LINE | 23 |
| 7 | 203592 | L.E.D., RED, SOLID STATE, T1 PKG | 1 |
| | 212367 | MARKER, `A` | 1 |
| | 212364 | MARKER, `I` | 1 |
| 10 | 204414 | WIRE, INSULATED, 20 GA, WHITE | 0 |
| | 212757 | TUBING, PTFE .053 ID – AUTO FLUSH LINE | 23 |
| 13 | 204864 | RESISTOR, FMA, 10M OHM 1.5 W | 1 |
| 14 | 206217 | TERMINAL, RING, #2, 26-22 AWG | 1 |
| | 212368 | MARKER, `V` | 1 |
| | 206214 | TUBING, TEFLON, .053 ID X .085 OD – INK RETURN LINE, SML – SOLVENT | 23 |
| 18 | 205509 | TUBING, SHRINK | .0625 |
| 20 | 343242 | LUG, TERMINAL | 1 |
| 21 | 206220 | TERMINAL, RING, #4, 26-22 AWG | 1 |
| 22 | 343244 | TERMINAL, LUG | 1 |
| | 343416 | FITTING, LINE, INK | 1 |
| | 206173 | TUBING, SHRINK, .187 ID, BLACK | 1 |
| 26 | 206213 | WIRE, HIGH VOLTAGE, 13 KVDC, 22 AWG | 1 |
| 28 | 356704 | FITTING, BARB, RETURN LINE | 1 |
| 29 | 201143 | TUBING, SHRINK, .125 ID | 0.12 |
| 30 | 205257 | TUBING, TEFLON, .144 ID | 0.21 |
| 33 | 212366 | MARKER, `B` | 1 |
| 34 | 251413 | TUBING, PLASTIC, 1/8 OD – INK RETURN LINE, LRG – WATER | 23.43 |
| 35 | 201027 | TUBING, SHRINK, .187 ID | 0.04 |
| 36 | 203668 | GASKET, .5 ID | 1 |
| 37 | 374532 | CONNECTOR, 2-PIN MALE W/LATCH | 1 |

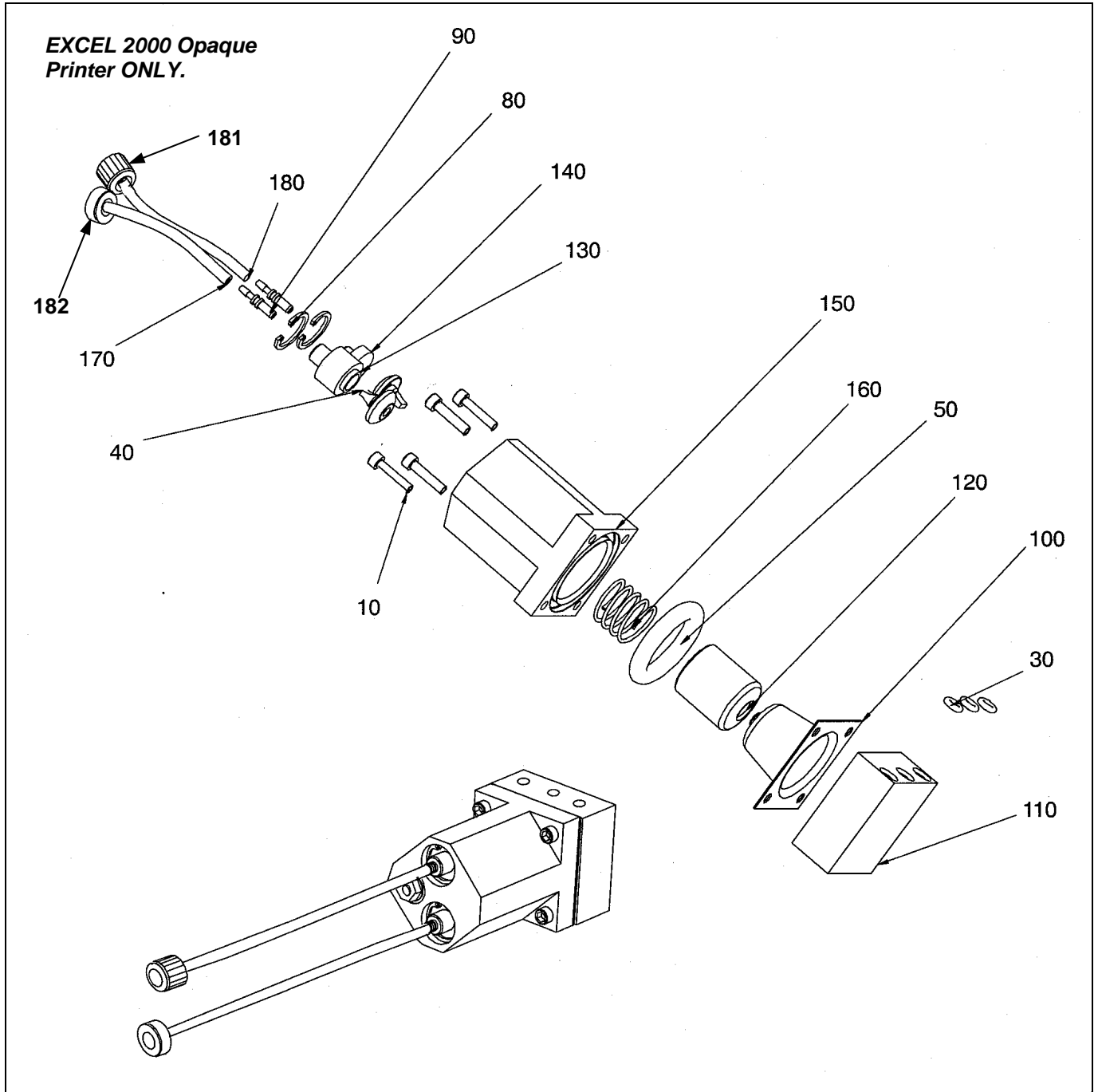


Figure 9-19. Circulator Pump Assembly (SP390591)

**EXCEL 2000 Opaque
Printer ONLY.**

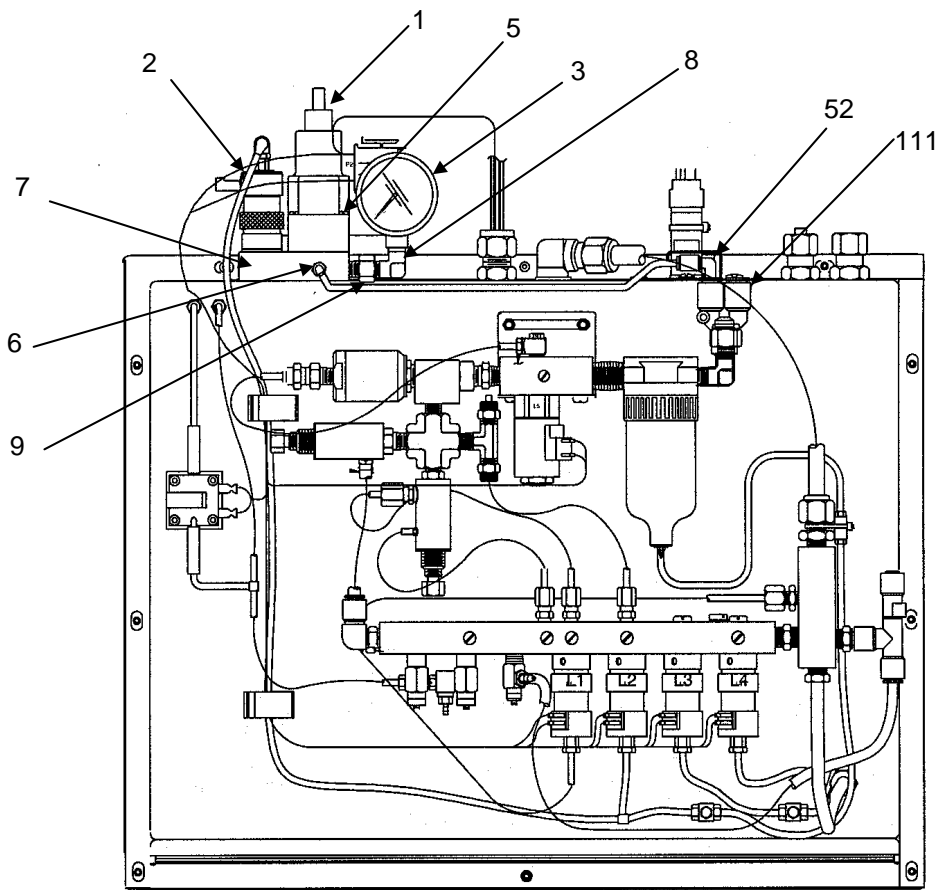


Figure 9-20. Circulator Pump Manifold Assembly

| Circulator Pump Assembly (SP390591) (Refer to Figures 9-19 and 9-20) | | | |
|---|--------------------|--------------------------------------|-----------------|
| Item | Part Number | Description | Quantity |
| 1 | 208266 | CIRCULATOR PUMP PRESSURE REGULATOR | 1 |
| 2 | 205991 | SOLENOID VALVE | 1 |
| 3 | 209151 | CIRCULATOR PUMP PRESSURE GAUGE | 1 |
| 5 | 208345 | SCREW, M2 X .5 X 30 PHILLIPS | 4 |
| 6 | 208302 | SWIVEL, BARB FITTING | 1 |
| 7 | 374719 | BLOCK, MOUNTING | 1 |
| 8 | 206420 | FITTING, ELBOW | 1 |
| 9 | 201865 | FITTING NIPPLE | 1 |
| 10 | 014310 | SCREW, CAP, HEX SOCKET, 4-40 X ½, LG | 4 |
| 30 | 202097 | O-RING, .114 ID | 3 |
| 40 | 207407 | VALVE, CHECK, DUCKBILL | 2 |
| 50 | 207883 | O-RING, .987 ID, EPDM | 1 |
| 52 | 213085 | FITTING, TUBE, REDUCER ELBOW | 1 |
| 80 | 210707 | RING, INTERNAL, RETAINING, ½ | 2 |
| 90 | 355922 | BARB, PRESS-IN, #14 | 2 |
| 100 | 371002 | DIAPHRAGM, ROLLING | 1 |
| 110 | 371010 | CAP, DOMED | 1 |
| 111 | 212769 | FITTING, TUBE, PLUG IN "Y" | 1 |
| 120 | 371011 | PISTON | 1 |
| 130 | 371766 | PLUG, TOP | 1 |
| 140 | 371767 | PLUG, BOTTOM | 1 |
| 150 | 371768 | BODY, PUMP, CIRCULATOR | 1 |
| 160 | 371003 | SPRING, COMPRESSION | 1 |
| 170 | 206214 | TUBING, PLASTIC, .06 ID | 6.0 IN. |
| 180 | 206214 | TUBING, PLASTIC, .06 ID | 6.0 IN. |
| 181 | 212815 | LUER LOCK BARB FITTING | 1 |
| 182 | 212816 | LUER LOCK BARB FITTING | 1 |

Older Style EXCEL 2000 Ink Module Assembly
(refer to Page 9-3 for additional information).

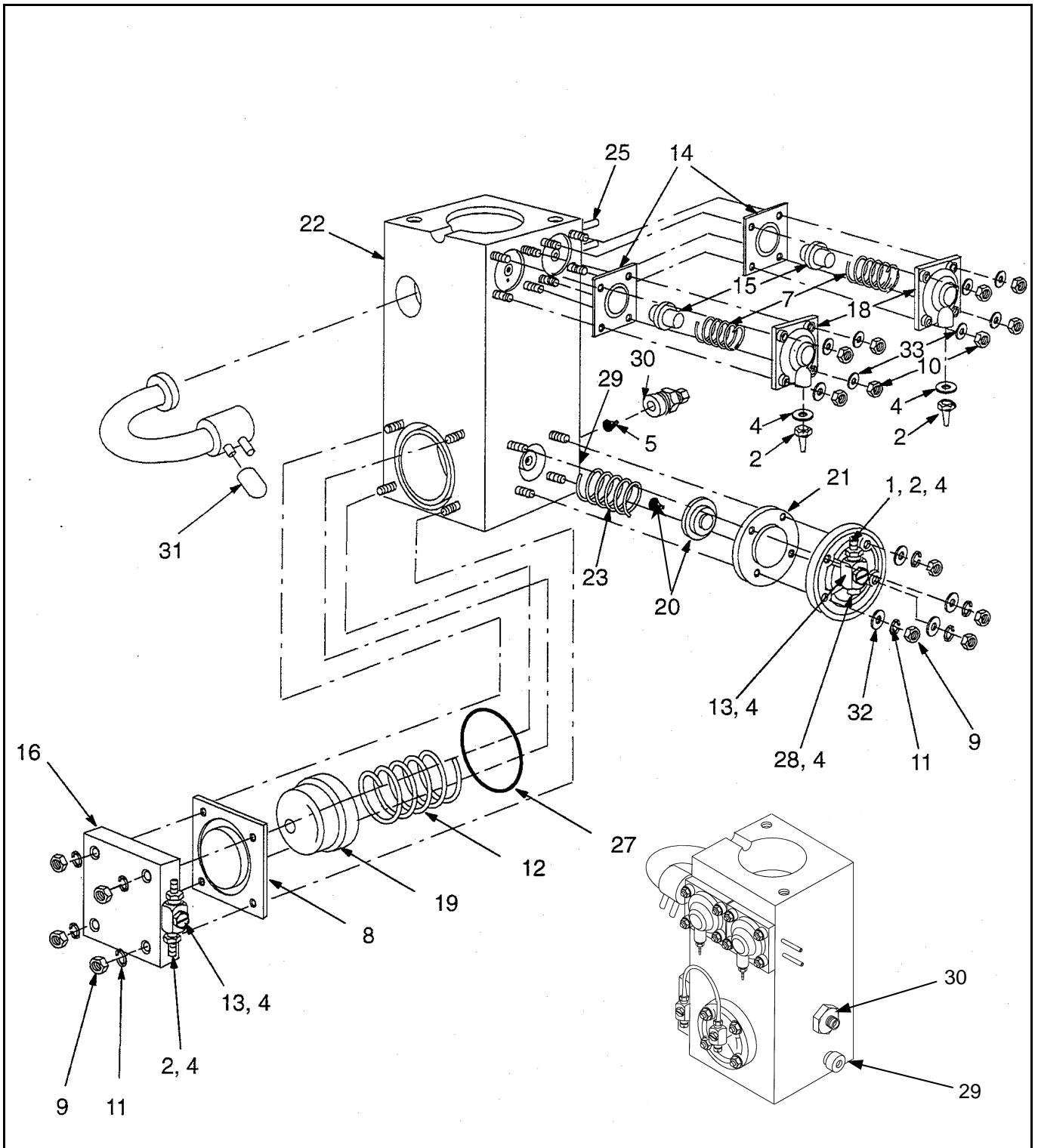


Figure 9-21. Ink Module Assembly

| Component Parts For Older Style Ink Module Assembly (refer to Figure 9-21) | | | |
|---|--------------------|--|-----------------|
| Item | Part Number | Description | Quantity |
| 2 | 201844 | FITTING, TUBE, BARB, 1/16 X 10-32 M, BRASS | 5 |
| 3 | 206312 | ADHESIVE, SEALANT LOCTITE 569 | AS REQUIRED |
| 4 | 212599 | GASKET, 3/16 ID | 8 |
| 5 | 207407 | VALVE, COMBINATION, .470/.460 DIA (DUCK) | 1 |
| 7 | SP355342 | SPRING, COMPRESSION, .375 FREE LENGTH | 2 |
| 8 | SP207016 | DIAPHRAGM, ROLLING, 2.00 IN. SQ. | 1 |
| 9 | 208759 | NUT, HEX, MACHINE SCREW, 8-32, WAXED | 8 |
| 10 | 208760 | NUT, HEX, MACHINE SCREW, 4-40, WAXED | 8 |
| 11 | 206430 | WASHER, LOCK, SPLIT RING, #8, .040 THK | 8 |
| 12 | SP205978 | SPRING, COMPRESSION, 2-1/2 LG | 1 |
| 13 | 205983 | FITTING, BARBED, SWIVEL, TEE | 2 |
| 14 | SP355611 | DIAPHRAGM, VALVE, ADDER | 2 |
| 15 | 355609 | PUSHER, ADDER VALVE | 2 |
| 16 | 355046 | CAP, DOMED (1.25 DIA PUMP, ALUMINUM) | 1 |
| 17 | 355605 | CAP, SUCTION VALVE | 1 |
| 18 | 355606 | CAP, ADDER VALVE-MOLDED | 2 |
| 19 | 375003 | PISTON, PUMP | 1 |
| 20 | 355961 | PISTON, SUCTION VALVE ASSEMBLY | 1 |
| 21 | SP355610 | DIAPHRAGM, VALVE, SUCTION | 1 |
| 22 | | <i>NOT AVAILABLE – (If required, you must upgrade to newer style ink module assembly. See note below).</i> | |
| 23 | SP355088 | SPRING, COMPRESSION, .88 FREE LENGTH | 1 |
| 25 | 206728 | TUBING, EXTRUDED, .062 ID X .125 OD | 0.42 ft |
| 26 | 203212 | ADHESIVE, SEALANT LOCTITE 242 | AS REQUIRED |
| 27 | 207015 | O RING, 1.540 ID, EPDM | 1 |
| 28 | 201868 | FITTING, TUBE, PLUG 5/32 | 1 |
| 29 | SP374653 | DRAIN PLUG | 1 |
| 30 | 209278 | FITTING, TUBE, 1/8 X 5/8-18, SPECIAL | 1 |
| 31 | 206840 | CAP, NON-THREADED, 5/32 ID, EPDM | 2 |
| 32 | 190341 | WASHER, FLAT, .032 X .203 ID | 8 |
| 33 | 193499 | WASHER, FLAT, .025 X .125 ID | 8 |
| 35 | SP209278 | CHECK VALVE ASSEMBLY (INCLUDES ITEMS 30 AND 5) | 1 |

Note: If you would like to purchase the entire ink module assembly, you should order the newer style ink module assembly, refer to page 9-20.

10

Accessories and Spare Parts

In this chapter you will find:

- Accessories that are available for use with the EXCEL 2000 printer.
- Items included in the EXCEL 2000 Spare Parts Kit.
- Information on how to order accessories, parts and supplies.

Refer to page 10-2 for a chapter-level Table of Contents.

Chapter 10 Contents

| | |
|---|--------------|
| Ordering Accessories, Parts and Supplies | 10-3 |
| How to Order..... | 10-3 |
| For Technical Assistance..... | 10-3 |
| Accessories | 10-4 |
| Overview | 10-4 |
| Printhead Stands | 10-4 |
| Printer Stand and Accessories..... | 10-4 |
| Voltage Regulators and Conditioners | 10-4 |
| Product Detectors | 10-5 |
| Shaft Encoder (with Cable) | 10-5 |
| Alert Light | 10-5 |
| Air Accessories..... | 10-6 |
| Programmable Counter..... | 10-6 |
| Manual Transport | 10-6 |
| External Five-gallon Make-up Fluid Supply | 10-6 |
| Remote Service Module | 10-6 |
| Serial Interface Kit..... | 10-7 |
| SureShot Accessory Kit..... | 10-7 |
| Additional Accessories | 10-7 |
| Spare Parts and the Spare Parts Kits | 10-8 |
| Spare Parts Kit for EXCEL 2000 Printer..... | 10-8 |
| Spare Parts Kit for EXCEL 2000 Opaque Printer | 10-10 |
| Supplies | 10-12 |

Ordering Accessories, Parts and Supplies

How to Order

For your convenience, replacement parts, fluids, and accessories can be ordered from **VIDEOJET** by telephone, by fax, or through our Internet ordering service. Please have the following information available to ensure quick, easy, and accurate service.

- Your customer number
- Your name and telephone number
- Your P.O. (Purchase Order) number
- Your preferred method of delivery
- The part number and quantity of all items required

To Order by Telephone 1-800-843-3610

Call **VIDEOJET** at **1-800-843-3610** and speak to one of our Customer Service Representatives. Telephone hours are 7:00 a.m. to 7:00 p.m., Monday through Friday (Central Standard or Daylight Time). In emergencies, please contact our 24-hour Technical Assistance Department at the same telephone number.

To Order by Fax 1-800-582-1343 (USA) 630-616-3629 (Int'l)

Fax your order to **VIDEOJET** at **1-800-582-1343**. Fax orders can be sent 24 hours a day, 7 days a week. Our international fax number is **630-616-3629**.

To Order over the Internet www.videojet.com

Contact **VIDEOJET** at www.videojet.com. Web orders can be placed 24 hours a day, 7 days a week. You can also view invoice status, and payment and sales order history on this site.

For Technical Assistance

For technical assistance, contact **VIDEOJET** at **1-800-843-3610** (for customers within the United States). Outside the U.S., contact your **VIDEOJET** distributor or subsidiary for assistance. Technical assistance is available 24 hours a day, 7 days a week.

Videojet Technologies Inc.
1500 Mittel Boulevard
Wood Dale, IL 60191-1073, U.S.A.

Accessories

Overview

This section contains the part numbers of **VIDEOJET** accessories.

Printhead Stands

| Description | Part Number |
|--|-------------|
| Printhead Stand, Adjustable Articulating Arm | 800013 |
| Printhead Stand Assembly, Adjustable | 343840 |
| Extra Arm Assembly (for P/N 343840) | 343879 |

Printer Stand and Accessories

| Description | Part Number |
|-------------------------------------|------------------------|
| Mobile Floor Stand, Painted | 371185-01 |
| Mobile Floor Stand, Stainless Steel | 371185-02 |
| Stationary Floor Stand, Painted | 371155 |
| Wall Mount Brackets, Painted | 355452 |
| 1-1/2 inch Caster Kit (Wheels) | 371722 (Quantity 4) |

Voltage Regulators and Conditioners

| Description | Part Number |
|---------------------------------------|-------------|
| Power Conditioner, 120 VAC/2 AMP Unit | 356841-02 |

Product Detectors

| Description | Part Number |
|--|--------------------|
| Proximity | 375085-01 |
| Retro-reflective | 375085-02 |
| Fiber Optic, 0.125" (3.17 mm) | 375085-03 |
| Fiber Optic, 0.046" (1.17 mm) | 375085-04 |
| Fiber Optic, 0.125" (3.17 mm), through-beam | 375085-05 |
| Fiber Optic/Proximity, Registration Marks | 375085-06 |
| Retro-reflective Fiber Optic, Transparent Objects | 375085-07 |
| Metal | 343885 |

Shaft Encoder (with Cable)

| Description | Part Number |
|---|--------------------|
| Environmental Sealed Encoder, 1800 ppr (3/8 Shaft) | 375065-01 |
| Encoder w/ Marker Pulse, 1800 ppr (1/2 Shaft) | 375065-02 |

Alert Light

| Description | Part Number |
|--------------------|--------------------|
| Alert Light | 360900-01 |

Air Accessories

| Description | Part Number |
|----------------------------------|-------------|
| Compressed Air Filtration System | 370930 |
| Air Filter Replacement | 212785 |
| Air Pressure Booster | 356805 |
| Maintenance Kit for Air Booster | 356830 |
| 120v Compressor, Portable | 353072-01 |
| 220v Int'l Assy. | 353072-02 |
| Air Gun Kit | 370177 |
| Air Drier & Bracket Kit | 374751 |

Programmable Counter

| Description | Part Number |
|-----------------------|-------------|
| Programmable Counter | 356844 |
| Enclosure for Counter | 207539 |

Manual Transport

| Description | Part Number |
|------------------|-------------|
| Manual Transport | 368090 |

External Five-gallon Make-up Fluid Supply

| Description | Part Number |
|---|-------------|
| External Five-gallon Make-up Fluid Supply | 353975-02 |

Remote Service Module

| Description | Part Number |
|---------------------------------------|-------------|
| Remote Nozzle Drive Adjustment Module | 355484 |

Serial Interface Kit

| Description | Part Number |
|------------------------------|-------------|
| Serial Interface Kit (Cable) | 375066 |

SureShot Accessory Kit

| Description | Part Number |
|------------------------|-------------|
| SureShot Accessory Kit | 374945 |

Additional Accessories

| Description | Part Number |
|---|-------------|
| Wire Marking Fixture | AP100021 |
| Washdown Printhead Cover | 375094 |
| RAM Battery Back-up for V6 Printer Control PCB | 375097 |
| Wash Bottle | 202047 |
| Service Tray* | 355495 |
| Printhead Bracket, for Service Tray* | 355497 |

*For a complete service tray assembly, you must order P/N 355495 and P/N 355497 together.

Spare Parts and the Spare Parts Kits

Spare Parts Kit

One Spare Parts Kit consisting of normal maintenance items for the EXCEL 2000 Series printers is available through **VIDEOJET**. Each item included in the Spare Parts Kit is also available separately. Individual items can be ordered by referring to the corresponding part number shown below.

There are different spare parts kits depending on your model of EXCEL 2000 Series printer.

- For the EXCEL 2000 printer Spare Parts Kit, please refer to the list below.
- For the EXCEL 2000 Opaque printer Spare Parts Kit, please refer to the list beginning on page 10-10.

Contents of Spare Parts Kit for EXCEL 2000 Printer with and without Auto Flush (P/N 390521):

| Description | Part Number | Qty. |
|--|-------------|------|
| Ink Pressure Regulator Assembly | SP370682 | 1 |
| Nozzle, 66 micron | SP371675 | 1 |
| Filter, Bottle | SP370551 | 2 |
| Holder, Magnifier Assy. | 355257 | 1 |
| Bracket, Holder, Printhead Assy. | 355262 | 1 |
| “O” Ring | SP206582 | 1 |
| Diaphragm, Rolling & “O” Ring Pdk. | SP207016 | 1 |
| Pump Spring Pkd. | SP205978 | 1 |
| Bleed Tube, Pkd. | 356539 | 1 |
| Diaphragm, Adder Valve, Pkd. | SP355611 | 2 |
| Tube, Transfer, Ink Module, 0.03 ID, Assy. | 390593 | 1 |
| Tube, Transfer, Ink Module, 0.06 ID Assy. | 375592 | 1 |
| Tool, Bottle, Wash, 250ML | 202047 | 1 |
| Screw, M3 x 8MM, w/Special Head | 370068 | 1 |

| Description | Part Number | Qty. |
|---------------------------------------|-------------|------|
| Spring, Adder Valve, Pkd. | SP355342 | 1 |
| Solenoid, Packaged | SP206429 | 1 |
| Service Tray* | 355495 | 1 |
| Printhead Bracket for Service Tray | 355497 | 1 |
| Gauge, Spacing, Plate, H.V. | 390072 | 1 |
| Ink Valve Ass., AF, PKD. Ass. | SP371019 | 1 |
| Flow meter, PC-70/PI, Pkd. | 356230 | 1 |
| Cylinder, Graduated, 50 ML, Prplyene. | 209914 | 1 |
| Relay, Solid State, AC, 250VRMS, 10AM | SP205295 | 1 |
| Key, Hex, 0.050 | 186514 | 1 |
| Filter, Ink, Absolute, 20U | 375007-01 | 1 |
| Filter, Disposable, 3 micron | 204667 | 1 |
| Fitting, Tube, MI. connctr., 1/8 OD | 203473 | 1 |
| Switch, Pressure, Spst. | SP204446 | 1 |
| Piston, Pump | 375003 | 1 |
| Switch, Press. | 209200 | 1 |
| “O” Ring, 1.055 ID, EPDM | 209705 | 1 |
| Reduran Hand Cleaner | SP212321 | 1 |
| Lamp, Incandescent, 14V T, 1-3/4 | SP205604 | 1 |
| Valve, Combination (Duck Bill) | 207407 | 2 |
| Wire, Gnd, Cleaning | 370092 | 1 |

*For complete service tray assembly, you must order P/N 355495 and P/N 355497

**Contents of Spare Parts Kit for the EXCEL
2000 Opaque Printer (P/N 390584):**

| Description | Part Number | Qty. |
|---------------------------------------|-------------|------|
| Ink Bottle Filter | SP374802 | 1 |
| Filter, Bottle | SP370551 | 1 |
| Holder, Magnifier Assy. | 355257 | 1 |
| Bleed Tube Packaged | 356539 | 1 |
| Nozzle, 66 Micron | SP371675 | 1 |
| Filter, Disposable | 204667 | 2 |
| Catcher, Plastic | SP356858 | 1 |
| Valve, Ink, Packaged | SP355198 | 1 |
| Solenoid, Packaged | SP206429 | 1 |
| Cylinder, Graduated, 25 ML, Prplyene. | 205416 | 1 |
| Tool, Bottle | 202047 | 1 |
| *Service Tray | 355495 | 1 |
| *Printhead Bracket for Service Tray | 355497 | 1 |
| Flowmeter, PC-7 | 356230 | 1 |
| Lamp, Incandescent, 14V T, 1-3/4 | SP205604 | 1 |
| Reduran Hand Cleaner | 212321 | 1 |
| Valve, Combination | 207407 | 4 |
| Key, Hex, 0.050 | 186514 | 1 |
| Switch, Pressure | SP204446 | 1 |
| Relay, Solid State, AC, 250VRMS, 10AM | SP205295 | 1 |
| Ink Pressure Regulator Assembly | SP370682 | 1 |
| Diaphragm, Rolling | SP207016 | 1 |
| Spring, Compression | 205978 | 1 |
| Diaphragm, Adder Valve | SP355611 | 2 |
| Spring, Adder Valve, Pkd. | SP355342 | 1 |

| Description | Part Number | Qty. |
|----------------------|--------------------|-------------|
| Piston, Pump | 375003 | 1 |
| O Ring | 207015 | 1 |
| Filter, Ink, 20U | 375007-01 | 1 |
| HV Gap Gauge | 390072 | 1 |
| Fitting, Check Valve | 374809 | 2 |
| Cap & Stem | SP356038 | 1 |
| Tube, Xfr, Ink | 390592 | 1 |
| Plug Drain, Kit | SP374563 | 1 |
| Switch, Pressure | SP204447 | 1 |
| Key, Hex, 5/16, S | 186975 | 1 |
| Pump, Circulator | 374813 | 1 |

*For complete service tray assembly, you must order P/N 355495 and P/N 355497.

Supplies

A variety of **VIDEOJET** inks, make-up fluids and cleaning solutions suitable for your particular application are available through **VIDEOJET**.

Refer to *Ordering Accessories, Parts and Supplies* on page 10-3 for information on obtaining **VIDEOJET** supplies from **VIDEOJET**.