

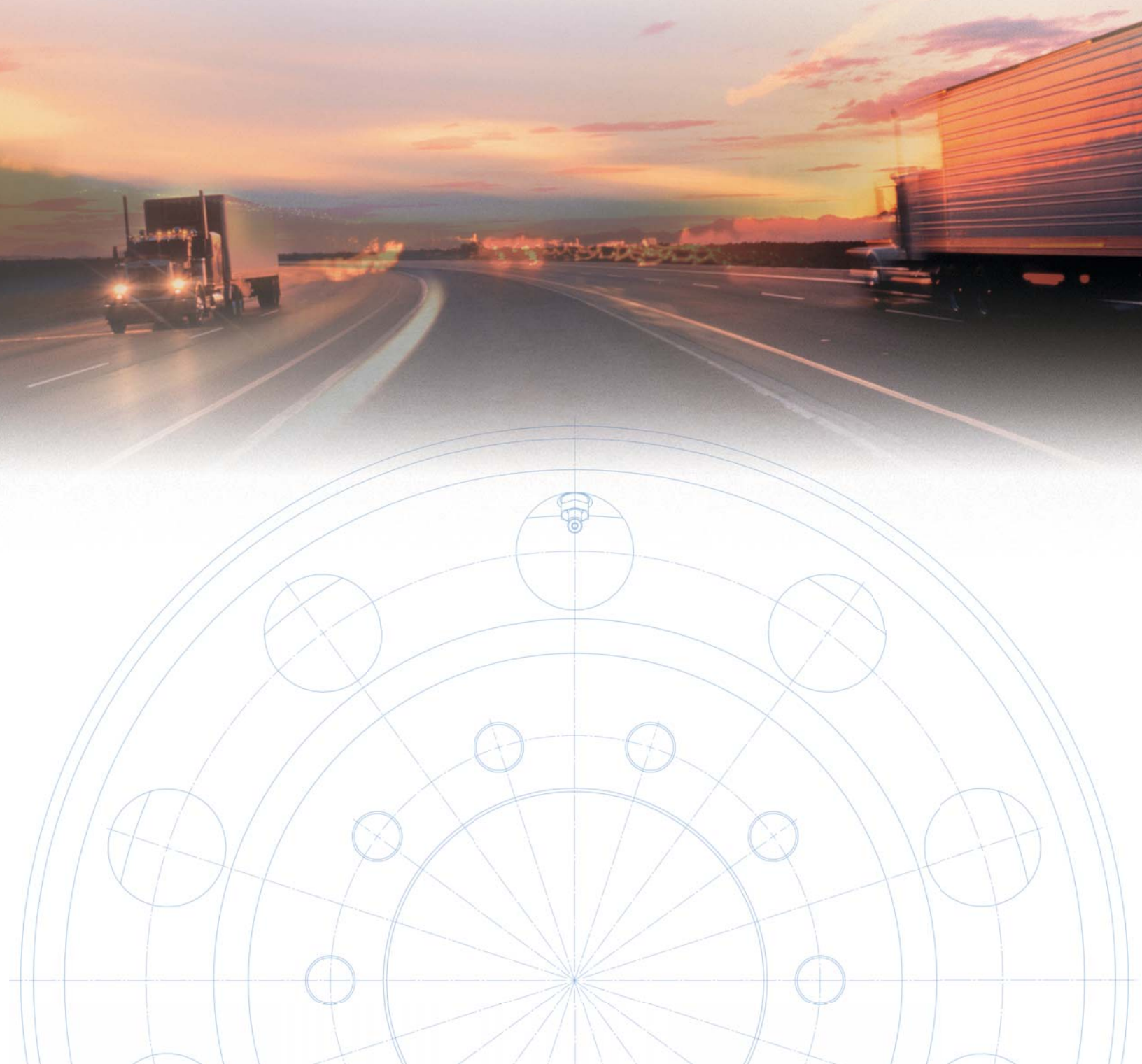
# ACCESSORY PRODUCTS CATALOG



---

Driving Your Bottom Line.™

---



# Table of Contents

## Heavy Duty Trucks - Chrome Accessories

One-Piece Hub Cover System .....	2
Alcoa Wheel Kits .....	3 - 5
Alcoa Hug-A-Lug® Nut Covers.....	5 - 6
Wheel Cap Nuts (Fasteners) .....	7 - 8

## Heavy Duty Trucks - Maintenance

Valve Stems .....	9
Valve Stem Extension Stabilizers .....	10
Valve Stem Extension Stabilizer Kits .....	11
Valve Stem Extensions .....	11
Double Seal Valve Cap.....	12
Air Chuck and Service Gauges .....	12

## Light Duty Trucks - Wheel Accessories

Wheel Cap Nuts (Fasteners) .....	13
Two-Piece Flange Nuts .....	13
Flange Nut Covers .....	14
Alcoa Hug-A-Lug® Nut Covers.....	14
Aluminum Axle End Covers .....	15 - 16
Wheel Hub Cover System Kit for 19.5" Wheels .....	17
Wheel Hub Cover System Kit for Medium Duty Wheels .....	17

## Alcoa Wheel Service Manual

This limited warranty should be used in conjunction with the Alcoa Wheel Service Manual. The Wheel Service Manual contains important safety information and warnings, and failure to read and understand this information may result in serious injury or death. The limited warranty is included with the Wheel Service Manual, but may appear elsewhere. If you do not have copies of the Wheel Service Manual, you may obtain copies free of charge from Alcoa Wheel Products, 1600 Harvard Avenue, Cleveland, Ohio 44105, (800) 242-9898 and on the Web at [www.alcoawheels.com](http://www.alcoawheels.com).

## Ordering Your Alcoa Accessories

Please place your order by calling 800-242-9898 between 9 a.m. and 5 p.m. EST.

If you have fitment questions, please call 800-242-9898, and a customer service representative will assist you with compiling your order.

## Warranty

This warranty covers all wheel accessories listed in this Accessory Products Catalog and all other wheel accessories sold and/or manufactured by Alcoa ("Wheel Accessories").

Alcoa warrants Wheel Accessories to be free from any manufacturing defects for two (2) years from the date of purchase. If a Wheel Accessory is defective at any time during the above described warranty period, the Wheel Accessory shall be returned along with the original receipt and a brief description of the defect to Alcoa Wheel and Transportation Products, 3320 Gilchrist Rd., Mogadore, Ohio 44260. Upon confirmation that the Wheel Accessory is defective, Alcoa, at its option, shall either replace the defective Wheel Accessory or issue a refund. Alcoa shall have no other liability for breach of warranty. For more information regarding warranty coverage or procedures, please call 800-242-9898 option # 1 to speak with an Alcoa representative.

This warranty is limited to the original consumer purchaser of the Wheel Accessory and expires immediately upon transfer of the Wheel Accessory to another individual or entity. Alcoa does not warrant against defects that are caused by misuse or abuse of the Wheel Accessory. ADDITIONALLY, ALCOA HEREBY DISCLAIMS ANY AND ALL IMPLIED WARRANTIES, INCLUDING, BUT NOT LIMITED TO ANY WARRANTIES OF MERCHANTABILITY OR FITNESS FOR A PARTICULAR PURPOSE. ALCOA IS NOT RESPONSIBLE FOR ANY INCIDENTAL OR CONSEQUENTIAL DAMAGES CAUSED BY THE WHEEL ACCESSORIES. Some states do not allow the exclusion or limitations of incidental or consequential damages, so the above limitations or exclusion may not apply to you. This warranty gives you specific legal rights, and you may also have other rights, which vary from state to state. Nothing in this warranty shall be construed as superseding or adding to any Alcoa warranty for truck wheels, light truck wheels, auto wheels or other products.



1600 Harvard Ave.  
Cleveland, OH 44105  
800-242-9898  
[www.alcoawheels.com](http://www.alcoawheels.com)



### One-Piece Hub Cover System for 10-Hole, 285.75mm, 22.5" and 24.5" Wheels

Part No.	Description	Wheel Type	Finish
086100S	Front Axle Kit includes: Two front covers and one removal tool. Use a short handle rubber mallet for application.	Hub Piloted	Chrome
087100S	Rear Axle Kit includes: Two rear covers and one removal tool. Use a short handle rubber mallet for application.	Hub Piloted	Chrome
000800	Removal Tool		

#### It's a One-Piece Wonder

- Reduces parts inventory for the dealership
- Reduces installation time: 1 part vs. 11 for fleets or owner operators
- Patented On-Off Attachment System
- On-Off Removal for hub lube and DOT inspection
- Available for Alcoa 14" wheels
- Two-year warranty





### Front Steer Wheel Hub Cover Kits for 10-Hole 22.5" and 24.5" Wheels

Part No.	Description/Application	Wheel Type	Nut Cover
076155	Kit includes: one hub cover, 10 screw-on Hug-A-Lugs <sup>®</sup> with clamps and one wrench. Application: Cover is secured by screwing the 001551 onto inner clamp. Inner clamp is placed on stud threads.	Ball Seat	001551 1.5"
076185*	Kit includes: one hub cover, 10 screw-on Hug-A-Lugs <sup>®</sup> and one wrench. Application: Cover is secured by screwing the 001851 directly into stud threads.	Hub Piloted	001851 33mm
076188	Kit includes: one hub cover, 10 screw-on Hug-A-Lugs <sup>®</sup> with clamps and one wrench. Application: Cover is secured by screwing the 001881 onto inner clamp. Inner clamp is placed on stud threads.	Hub Piloted	001881 33mm

\* Requires a minimum of 4 threads per stud.

For technical assistance with identifying  
the correct product for your  
heavy duty truck, call 800.242.9898



### Rear Drive Wheel Cover Kits for 10-Hole 22.5" and 24.5" Wheels

Part No.	Description/Application	Wheel Type	Nut Cover
077155	Kit includes: one hub cover, 10 screw-on Hug-A-Lugs® with clamps and one wrench. Application: Cover is secured by screwing the 001551 onto inner clamp. Inner clamp is placed on stud threads.	Stud Piloted	001551 1.5"
077185*	Kit includes: one hub cover, 10 screw-on Hug-A-Lugs® and one wrench. Application: Cover is secured by screwing the 001851 directly onto stud threads.	Hub Piloted	001851 33mm
077188	Kit includes: one hub cover, 10 screw-on Hug-A-Lugs® with clamps and one wrench. Application: Cover is secured by screwing the 001881 onto inner clamp. Inner clamp is placed on stud threads.	Hub Piloted	001881 33mm

\* Requires a minimum of 4 threads per stud.



## Hub Covers

Part No.	Description	Finish
076100	Front Axle Cover for Interlocking Hub Cover System	Chrome
077100	Rear Axle Cover for Interlocking Hub Cover System	Chrome

## Hub Cover System Cap Nut Cover Wrenches

Part No.	Description
000500	Cap Nut Cover Wrench for Ball Seat Hug-A-Lugs®
000600	Cap Nut Cover Wrench for Hub Piloted Hug-A-Lugs®



## Hug-A-Lug® Nut Covers for 33mm Hex Two-Piece Flange Nuts (Hub-Pilot Wheels)

Part No.	Description	For Heights	Finish
001851	For 33mm Hex Two-Piece Flange Nut for Trucks (screw-on)	27-31mm	Chrome
001881	For 33mm Hex Two-Piece Flange Nut for Trucks with clamps	27-31mm	Chrome
000188	Black Interlocking Clamp (replacement)	27-31mm	Black
000888	Off White Interlocking Clamp (replacement)	27-31mm	Off white



## Hug-A-Lug® Nut Covers for 1.5" Hex Nut (Ball-Seat, Stud Located Wheels)

Part No.	Description	Finish
001551	For 1.5" Hex Ball Seat Nut, with clamps	Chrome
000155	White Interlocking Clamps (replacements)	White
000555	Gray Interlocking Clamps (replacements)	Gray



### Hug-A-Lug® Nut Covers for 1.5" Hex Nut (Ball-Seat, Stud Located Wheels)



Part No.	Description	Finish
001501	For 1.5" Hex Stud-pilot Nut	Chrome

### Hug-A-Lug® Two-Piece Nut Covers for 33mm Hex Flange Nuts (Hub-Pilot Wheels)



Part No.	Description	For Heights	Finish
001801	For 33mm Hex Flange Nut for Buses	.886" - 1.0"	Chrome
001811	For 33mm Hex Flange Nut for Trucks	27-31mm	Chrome

### Hug-A-Lug® Nut Covers for 1.5" Hex Two-Piece Flange Nuts (Hub-Pilot Wheels)

Part No.	Description	For Heights	Finish
001821	For 1.5" Hex Flange Nut for Trucks	1.4375"	Chrome
001831	For 1.5" Hex Flange Nut for Buses	.875"	Chrome

### Hug-A-Lug® Nut Covers (10 Pack)

Part No.	Description
001503	Hug-A-Lugs Nut Covers for 1.5" Hex Ball Seat Cap Nuts
001813	Hug-A-Lugs Nut Covers for 33mm Hex Flange Nuts

## Wheel Cap Nuts (Fasteners) Outer Cap Nuts (Ball Seat Wheels)

Part No.	Description
599601 (5996L)	1 1/8" x 16 cap nut – mounts standard single wheels and wide base wheels to 1 1/8" studs and provides additional 1/8" hex height. Also mounts outer dualed wheel to 1 1/8" inner cap nut. *
599602 (5996R)	

\* Order Part No. 599601 for left thread applications.  
Order Part No. 599602 for right thread applications.



599601 (5996L)

Part No.	Description
599501 (5995L)	3/4" x 16 cap nut – mounts standard single wheels and wide base wheels to 3/4" studs. *
599502 (5995R)	

\*Order Part No. 599501 for left thread applications.  
Order Part No. 599502 for right thread applications.



599502 (5995R)

## Inner Cap Nuts (Ball Seat Wheels)

Part No.	Description
598801 (5988L)	For use with standard length studs (1.31" to 1.44" stud standoff) or longer studs not to exceed 1.88" stud standoff. Full external threads, counter bore 5/16" deep at open end. For use with aluminum inner and outer wheels. Prevents stud from bottoming out in cap nut. *
598802 (5988R)	

\* Order Part No. 598801 for left thread applications.  
Order Part No. 598802 for right thread applications.



598801 (5988L)

Part No.	Description
789601 (7896L)	Inner thread 3/4" x 16, outer thread 1 1/8" x 16. For use with steel inner dual wheels and aluminum outer dual wheel with 1.31" to 1.44" stud standoff. *
789602 (7896R)	

\* Order Part No. 789601 for left thread applications.  
Order Part No. 789602 for right thread applications.



789601 (7896L)



## Wheel Cap Nuts (Fasteners) Outer Cap Nuts (For Two-Piece Flange Nuts - Hub Piloted Wheels)

Part No.	Description
039874	Two-piece, 26.25mm height, 33mm hex, M22 x 1.5mm, RH thread flange nut. Mounts single and dual aluminum wheels to wheel centering hubs. Right-hand threads used on both sides of vehicle. Refer to Alcoa Wheel Service Manual for minimum stud standouts for single and dual wheel applications.



Part No.	Description
430632	Two-piece, 50mm height, 33mm hex, M22 x 1.5mm, RH thread, sleeved cap nut. Mounts single aluminum wheels, with 32mm bolt holes, to wheel centering hubs with stud standouts less than 1.71" (43.5mm). Right-hand threads used on both sides of vehicle.



Part No.	Description
430732	Two-piece, 78.5mm height, 33mm hex, M22 x 1.5mm, RH thread, sleeved cap nut. Mounts dual aluminum wheels, with 32mm bolt holes, to wheel centering hubs with stud standouts less than 2.85" (72mm). Right-hand threads used on both sides of vehicle.



Part No.	Description
578032	Dacromet coated. Two-piece, 36.25mm height, 33mm hex, M22 x 1.5mm, RH thread, sleeved cap nut. Mounts single aluminum wheels, with 32mm bolt holes, to wheel centering hubs with stud standouts less than .98" (25mm). Right-hand threads used on both sides of vehicle.



578632	Dacromet coated. Two-piece, 50mm height, 33mm hex, M22 x 1.5mm, RH thread, sleeved cap nut. Mounts single aluminum wheels, with 32mm bolt holes, to wheel centering hubs with stud standouts less than 1.71" (43.5mm). Right-hand threads used on both sides of vehicle.
--------	--

578732	Dacromet coated. Two-piece, 78.5mm height, 33mm hex, M22 x 1.5mm, RH thread, sleeved cap nut. Mounts dual aluminum wheels, with 32mm bolt holes, to wheel centering hubs with stud standouts less than 2.85" (72mm). Right-hand threads used on both sides of vehicle.
--------	--

578032



## Grommet Seal Valve Stems

Part No.	Valve TR No.	A Height	Bend Angle	B Length
005520	552	1.26"	—	—
005530	553	2.31"	—	—
005533	553C	.93"	45°	1.38"
005535	553E	.98"	75°	1.38"
005544	554D	.98"	60°	1.94"
005554	555D	.98"	60°	2.6"
005555	555E	.98"	75°	2.6"
007007	70MS-7	1.38"	7°	1.12"

### Grommet Seal Valve Stem Features:



- Longer Sealing Life
- Greater Corrosion Resistance
- Larger Sealing Surface
- Hex Recess in Base for Easy Install
- Grommet has Better Temperature Range and Tear Resistance

### If it's not an Alcoa aluminum wheel, it's just an aluminum wheel.

- Alcoa invented aluminum wheels over 60 years ago.
- Alcoa controls the whole production process – from mining through refining, smelting, forging and machining.
- We offer a complete product line in the industry.
- We have global presence and are standard position on more OEMs than any other brand.
- We have a proprietary one-piece forging process that creates wheels strong enough for M-1 tanks, 747 jets and your fleet.



## Valve Stem Extension Stabilizers

**Part No. 002125**



Fits wheel size: 19.5"  
Hand Hole Diameter: 1.50"  
Hole Position: Center

**Part No. 002126**



Fits wheel size: 19.5"  
Hand Hole Diameter: 1.50"  
Hole Position: Off-Center

**Part No. 002127**



Fits wheel size: 22.5 x 9.0  
Hand Hole Diameter: 1.50"  
Hole Position: Center

**Part No. 002225**



Fits wheel size: 22.5"  
Hand Hole Diameter: 2.00"  
Hole Position: Center

**Part No. 002227**



Fits wheel size: 22.5"  
Hand Hole Diameter: 2.50"  
Hole Position: Center

**Part No. 002245**



Fits wheel size: 24.5"  
Hand Hole Diameter: 2.19"  
Hole Position: Off-Center

**Part No. 002246**



Fits wheel size: Peterbilt  
Hand Hole Diameter: Oval  
Hole Position: Center  
For wheels purchased before year 2000

**Part No. 002247**



Fits wheel size: 24.5"  
Hand Hole Diameter: 2.375"  
Hole Position: Off-Center

**Part No. 002248**



Fits wheel size:  
Freightliner Stylized  
Hand Hole Diameter: 1 5/16" x 3.5"  
Hole Position: Off-Center

**Part No. 008864**



Fits wheel size: 22.5" & 24.5"  
Hand Hole Diameter: 2.50"  
Hole Position: Off-Center

**Part No. 008964**



Fits wheel size: Prevost  
Hand Hole Diameter: 2.00"  
Hole Position: Off-Center

**Part No. 027245**



Fits wheel size: 24.5"  
Hand Hole Diameter: 2.70"  
Hole Position: Off-Center



125392

## Valve Stem Extension Stabilizer Kits

Part No.	Description	Stabilizer (2)	Extensions (2)
125392	For 19.5" wheels with 1.5" diameter hand hole, valve stem diameter 0.33", center hole	002125	000392
126392	For 19.5" wheels with 1.5" diameter hand hole, valve stem diameter 0.33", off-center hole	002126	000392
127392	For 22.5" x 9" wheels with 1.5" diameter hand hole, valve stem diameter 0.33", center hole	002127	000392
225392	For 22.5" wheels with 2.00" diameter hand hole, valve stem diameter 0.33", center hole	002225	000392
227392	For 22.5" wheels with 2.50" diameter hand hole, valve stem diameter 0.33", center hole	002227	000392
245392	For 24.5" wheels with 2.19" diameter hand hole, valve stem diameter 0.33", off-center hole	002245	000392
246392	For Peterbilt stylize oval hand hole wheels (before year 2000)	002246	000392
247392	For 24.5" wheels with 2.38" diameter hand hole, valve stem diameter 0.33", off-center hole	002247	000392
864392	For 88367X with 2.50" diameter hand hole, valve stem diameter 0.33", off-center hole	008864	000392
927245	For 98367X wheels with 2.50" diameter hand hole, valve stem diameter 0.33", off-center hole	027245	000392

Each stabilizer kit contains 2 stabilizers and 2 extensions.



000392

## Valve Stem Extensions

Part No.	Description	Collar Type	Effective Length
000392	Truck Extension	Long 1"	5 1/8"

Adding air to the inside wheel when you have dual applications can be a real struggle - unless you know about Alcoa's valve stem extensions and stabilizers. These unique products are what smart drivers use to make this job a snap. The extension is supported by a soft yet stable grommet that fits snugly into the handhold so that, when you need to check the pressure or add air, it's as easy to do on the inside positions as on the outside tires. Stop fighting with your dualies, and get genuine Alcoa valve stem extensions and stabilizers.



### Valve Cap

Part No.	Description
001009	Double seal valve cap seals at the top of the cap which prevents dirt and water from penetrating the cap, eliminating the chances of clogged air passages due to ice and debris. Allows for inflation and deflation of the tire without removing the cap. A great time saver.
000633	Valve cap remover makes it easy to remove and install valve caps on inside dual wheels. Designed for aluminum wheels with small hand holes, it comes with a protective sleeve to prevent scratching. Also works great at removing tight or cross-threaded caps. Positive hole while valve is serviced. Keeps cap in tool.



### Air Chucks

Part No.	Description
003500	A new design offers greater durability and is more user friendly on the straight-on and 30° reverse angle chuck. This 6" long chuck finished with an attractive black polyurethane coating has 1/4" NPT female threads.
003700	A special air chuck with a straight-on connection and a 180° reverse chuck allows easier access to valves located in tight, hard-to-reach places. The 003700 is 6" long and has 1/4" NPT female threads.

### Service Gauges

Part No.	Calibration	Incre.	Bar	Chuck Style	Finish
001605	10-150 PSI	2 PSI	Nylon	Straight-on 30° reverse	Black Polyurethane
001805	10-150 PSI	2 PSI	Nylon	Straight-on 180° reverse	Chrome



The grip on these gauges allows a positive grip during inclement weather conditions and serves as a protective cushion should the gauge be inadvertently dropped. Can be used on all dual foot truck service gauges.

## Wheel Cap Nuts (Fasteners) 60° Cone Seat Cap Nuts (For Stud Located 16"x7" Wheels)

Part No.	Thread Size	Hex	Torque
005014	M14 x 1.5mm	7/8"	100 - 110 ft. lbs.
005916	9/16" x 20 tpi	7/8"	120 - 140 ft. lbs.



005014

Each lug nut has specific inner threads for each application with universal outside threads to accept the Alcoa chrome-plated nut cover. (See Hug-A-Lug® Part Nos. 000078 and 000079)

## Two-Piece Flange Nuts (For Hub Piloted 16"x6" Wheels & some RV Wheels)

Part No.	Thread Size	Hex	Torque
039913	M14 x 2.0mm (internal thread)	1.050"	140 ft. lbs.
039946	5/8" x 18 tpi (internal thread)	1.050"	150 ft. lbs.
139698	M14 x 1.5mm (internal thread)	1.050"	140 ft. lbs.
139987	9/16" x 18 tpi (internal thread)	1.050"	140 ft. lbs.



139698

Each lug nut has specific inner threads for each application with universal outside threads to accept the Alcoa chrome-plated nut cover. (See Hug-A-Lug® Part No. 019001)

### One-Piece Forged Strength

Our one-piece design eliminates welds that concentrate stress where fatigue cracks can start. Forging also aligns the metal grain in a uniform direction along the contours of the wheel, increasing strength.

### Withstands Tough Terrain

Alcoa forged aluminum wheels are four times stronger than steel wheels in crush tests. That's why we also use this technology to produce wheels for M-1 tanks and 747 jets.

### Smooth Ride

Precision machined to ensure a smoother, truer ride for both you – and your cargo. This is why most 18-wheelers ride Alcoa aluminum wheels.

### Better Handling

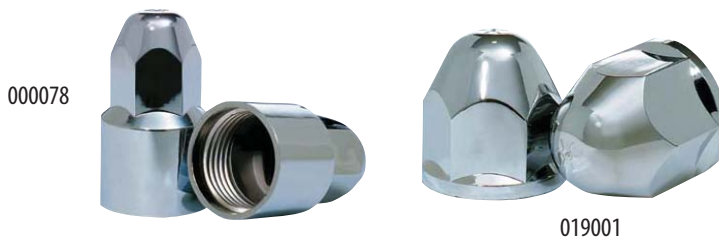
Aluminum weighs less than steel, lowering the suspension's unsprung weight, which allows faster suspension response, a smoother ride and improved traction when cornering.

## Flange Nut Covers

Part No.	Description	Thread Size
000200	30mm Hex Flange Nut	M20 x 1.5"
000220	33mm Hex Flange Nut	M22 x 1.5"



Requires a minimum of 3 threads protruding through lug nut.  
Black spacer not applicable with short lug nut.



## Hug-A-Lug® Nut Covers (For 16" and 19" Wheels)

Part No.	Description	For Heights	Fits Nut	Finish
000078*	2.125" Tall	.96"	60° Cone	Chrome
000079*	1.525" Tall	.96"	60° Cone	Chrome
019001**	Hug-A-Lug®	1 1/16"	2-Piece Flange	Chrome

\* Fits Alcoa Part No. xx5xxx Nuts

\*\* Fits Alcoa Part No. x39xxx Nuts

### Long Lasting

We believe in our wheels. They have passed rigorous OEM testing. That's why we offer a Five-Year Limited Warranty. Naturally corrosion-resistant. No sandblasting, priming or paint – ever.

## Forged Strength.



## Aluminum Axle End Covers

**Part No. 001611\***



Height: 1.125" straight  
For Dodge/Ford dualie applications  
Bolt Pattern: 8 x 6.50

**Part No. 001612\***



Height: 4.750" straight  
For Dodge/Ford dualie applications  
Bolt Pattern: 8 x 6.50

**Part No. 001613\***



Height: 3.50" straight  
For Dodge/Ford dualie applications  
Bolt Pattern: 8 x 6.50

**Part No. 001681\***



Height: 4.750" straight with  
3.50" open end  
For Dodge/Ford dualie applications  
Bolt Pattern: 8 x 6.50

**Part No. 003167**



Height: 4.700" straight  
Hub bores: 5.150"  
Bolt Pattern: 8 x 6.50

**Part No. 003267**



Height: 2.000" straight  
Hub bores: 5.150"  
Bolt Pattern: 8 x 6.50

**Part No. 003611\***



Height: 1.125" straight  
For Chevy dualie applications  
Bolt Pattern: 8 x 6.50

**Part No. 003612\***



Height: 4.750" straight  
For Chevy dualie applications  
Bolt Pattern: 8 x 6.50

**Part No. 003613\***



Height: 3.50" straight  
For Chevy dualie applications  
Bolt Pattern: 8 x 6.50

**Part No. 004167**



Height: 4.000" straight  
Hub bores: 5.150"  
Bolt Pattern: 8 x 6.50

**Part No. 004610\***



Height: 1.50" straight with 3.50"  
open end  
For Ford applications  
Hub bores: 4.93"  
Bolt Pattern: 8 x 170mm

**Part No. 005267**



Height: 2.000" straight  
Hub bores: 4.250"  
Bolt Pattern: 5 x 5.50 & 8 x 6.50



## Aluminum Axle End Covers

**Part No. 006167**



Height: 4.000" straight with 3.750" open end  
Hub bores: 4.250"  
Bolt Pattern: 5 x 5.50 & 6 x 5.50

**Part No. 008167**



Height: 4.650" straight with 4.500" open end  
Hub bores: 5.150"  
Bolt Pattern: 8 x 6.50

**Part No. 009167**



Height: 3.094" straight  
Hub bores: 3.295"  
Bolt Patterns: 5 x 4.50,  
5 x 4.75, 5 x 5.00 & 6 x 4.50

**Part No. 009267**



Height: 2.00" straight  
Hub bores: 3.295"  
Bolt Patterns: 5 x 4.50,  
5 x 4.75, 5 x 5.50 & 6 x 5.50

**Part No. 011911\***



Height: 1.63" straight  
Hub bores: 5.250" & 5.460"  
Bolt Pattern: 10 x 7.25

**Part No. 011912\***



Height: 5.53" straight  
Hub bores: 5.250" & 5.460"  
Bolt Pattern: 10 x 7.25

**Part No. 021000**



Height: .750" straight  
Hub bores: 6.343"  
Bolt Pattern: 6 x 205mm

**Part No. 022000**



Height: 3.937" straight  
Hub bores: 6.343"  
Bolt Pattern: 6 x 205mm

\* Mounts from the front



## Wheel Hub Cover System Kit for 19.5" Wheels

Part No.	Wheel Size	Bolt Circle	Package Includes
001102	19.5" x 6" Hub Pilot	8 x 225mm	1 Front
001103	19.5" x 6" Hub Pilot	8 x 225mm	1 Rear
110203	19.5" x 6" Hub Pilot	8 x 225mm	2 Fronts, 2 Rears

Application: Snaps on over lugnuts and center hub.



## Wheel Hub Cover System Kit for Medium Duty Trucks, Buses and Trailers

Part No.	Description	Bolt Circle	Package Includes
008201	Front hub cover kit for 30mm hex flange nuts	8 x 275mm	1 front hub cover, 8 lug nut covers (000220)
008202	Rear hub cover kit for 30mm hex flange nuts	8 x 275mm	1 rear hub cover, 8 lug nut covers (000200)
082012	For 30mm hex flange nuts	8 x 275mm	2-008201, 2-008202 32-000200
008221	Front hub cover kit for 33mm hex flange nuts	8 x 275mm	1 front hub cover, 8 lug nut covers (000220)
008222	Rear hub cover kit for 33mm hex flange nuts	8 x 275mm	1 rear hub cover, 8 lug nut covers (000220)
082122	For 33mm hex flange nuts; steers	8 x 275mm	2-008221, 16-000220
082133	For 33mm hex flange nuts; drivers	8 x 275mm	2-008222, 16-000220

Application: Place cover over hub and secure with nut cover.





Alcoa Wheel and Transportation Products  
Headquarters  
1600 Harvard Ave.  
Cleveland, OH 44105  
(800) 242-9898  
[www.alcoawheels.com](http://www.alcoawheels.com)

© Alcoa, Inc.

**We Love to Accessorize Trucks.  
We Can't Get Enough of It.**

