

---

# Contents

Revision History.....	1
General.....	1
Brief Introduction.....	2
Software Specification.....	4
Circuit Description.....	14
CPU Pins.....	19
Part List 1.....	22
Adjustment Description.....	36
Trouble-shooting Chart.....	40
Disassembly and Assembly for Repair.....	42
Exploded View.....	44
Part List 2.....	45
Packing.....	47
PC Board View.....	48
Block Diagram.....	50
Level Diagram.....	51
Schematic Diagram.....	52
Description of TC-700 Desktop Charger.....	84
Specifications.....	87

## **Revision History**

<b>Edition</b>	<b>Release Date</b>	<b>Revised Content</b>
8130070000000	2005/09/22	Initial release
8130070000010	2006/7/1	1) 2-Tone/5-Tone, add HDC1200 and HDC2400™ 2) Update schematic diagram and part list 3) Update exploded view, part list and diagram for disassembly and assembly

## **General**

### **Manual Scope**

This manual is intended for use by experienced technicians familiar with similar types of communication equipment. It contains all service information required for the equipment and is current as of the publication date.

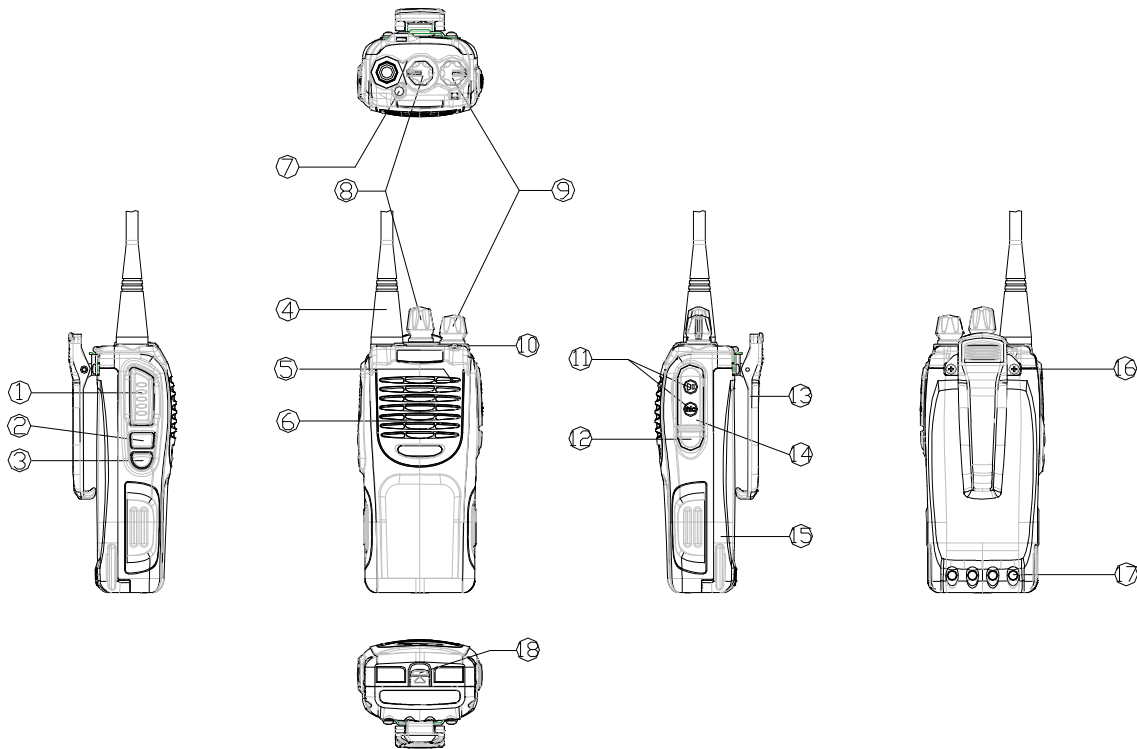
### **User Safety Information**

The following precautions are recommended for personnel safety:

- DO NOT transmit until all RF connectors are verified secure and any open connectors are properly terminated.
- SHUT OFF and do not operate this equipment near electrical blasting caps or in an explosive atmosphere.
- When in vehicles with an airbag, do not place a portable radio in the area over an airbag or in the airbag deployment area.
- Do not expose the radio to direct sunlight for a long time nor place it close to a heating source.
- Do not use any portable radio with a damaged antenna. If a damaged antenna comes into contact with your skin, a minor burn may result.
- When transmitting with a portable radio, hold the radio in a vertical position with its microphone about 5 centimeters away from your mouth.
- If you wear a portable radio on your body, be sure to keep the antenna at least 2.5 centimeters away from your head or body when transmitting.
- This equipment should be serviced by a qualified technician only.

## **Brief Introduction**

### **Control Knob and Function Key**



**(1) PTT Key (Push-To-Talk Key)**

Select transmit/receive mode. Press and hold PTT, radio operates in transmit mode. Release PTT, radio returns to receive mode.

**(2) SK1 Key**

Side Key1, programmable key

**(3) SK2 Key**

Side Key2, programmable key

**(4) Antenna**

**(5) Microphone**

**(6) Speaker**

**(7) TK Key**

Top Key, programmable

**(8) Channel Selector Knob**

Rotate the knob to select Channel1 to 16

**(9) Power/Volume Control Knob**

Rotate the Power/Volume Control Knob clockwise to turn the radio on; fully counter clockwise to turn the radio off. Increase or decrease volume by adjusting the volume control accordingly.

**(10) LED Indicator**

Red LED glows while transmitting; green LED glows while receiving; red LED flashes when the battery voltage is low.

**(11) External Jack****(12) Earplug Cover Screw****(13) Earplug Cover****(14) Belt Clip****(15) Battery****(16) Belt Clip Screw****(17) Charging Connector****(18) Release Button**

## Software Specification

### Specification:

#### ◆ Conventional Mode

1. Mechanical Knob (16 channels)  
VHF:136~174MHz  
UHF:300~350MHz, 350~390MHz, 400~450MHz 420~470MHz, 440~490MHz, 470~520MHz
2. Channel Spacing: 25/20/12.5KHz (Wide/Medium/Narrow bandwidth compatible)
3. Step: 2.5/5/6.25KHz
4. LED Indicator: Red/Green
5. 3 Programmable Function Keys
6. CTCSS/CDCSS Encode & Decode
7. DTMF Encode
8. 2-Tone (2-Tone version) / 5-Tone (5-Tone version)
9. HDC2400™ Encode & Decode
10. HDC1200 Encode & Decode
11. Squelch Mode:
  - 1) Carrier
  - 2) CDCSS/CTCSS
  - 3) Optional Signalling
  - 4) CTCSS/CDCSS AND 2-Tone/5-Tone/ HDC2400™/HDC1200
  - 5) CTCSS/CDCSS OR 2-Tone/5-Tone/ HDC2400™/HDC1200
12. Scan
13. Time-Out-Timer (TOT)
14. Rent
15. Battery Save
16. Emergency
17. PTT ID
18. Busy Channel Lockout & Busy Tone Lockout

### Description

#### 1. User Mode

This mode is for normal operation.

#### 2. All Reset Mode

Firstly ground the SELF point, and then turn the power on while holding down TK key for 2 seconds. The radio enters all reset mode with green LED flashing twice. Turn the channel selector knob to the

selected channel and press PTT, the radio data is all reset (All clone modes will be automatically activated when All Reset is completed). Frequency settings are shown as follows:

Selected Channel	Frequency Band(MHz)	F1 (MHz)	F2 (MHz)	F3 (MHz)	F4 (MHz)	F5 (MHz)
1	136~174 (V)	TX1:136 RX1:136.1	TX2:145.5 RX2:145.6	TX3:155 RX3:155.1	TX4:164.5 RX4:164.6	TX5:174 RX5:173.9
2	400~450 (U1)	TX1:400 RX1:400.1	TX2:412.5 RX2:412.6	TX3:425 RX3:425.1	TX4: 437.5 RX4:437.6	TX5:450 RX5:449.9
3	440~490 (U2)	TX1:440 RX1:440.1	TX2:452.5 RX2:452.6	TX3:465 RX3:465.1	TX4:477.5 RX4:477.6	TX5:490 RX5:489.9
4	420~470 (U3)	TX1:420 RX1:420.1	TX2:432.5 RX2:432.6	TX3:445 RX3:445.1	TX4:457.5 RX4:457.6	TX5:470 RX5:469.9
5	470~520 (U4)	TX1:470 RX1:470.1	TX2:482.5 RX2:482.6	TX3:495 RX3:495.1	TX4:507.5 RX4:507.6	TX5:520 RX5:519.9
6	350~390 (U5)	TX1:350 RX1:350.1	TX2:360 RX2:360.1	TX3:370 RX3:370.1	TX4:380 RX4:380.1	TX5:390 RX5:389.9
7	300~350 (U6)	TX1:300 RX1:300.1	TX2:312.5 RX2:310.1	TX3:325 RX3:320.1	TX4:337.5 RX4:330.1	TX5:350 RX5:339.9
8	400-470 (UW(1))	TX1:400 RX1:400.1	TX2:417.5 RX2:417.6	TX3:435 RX3:435.1	TX4:453.5 RX4:453.6	TX5:470 RX5:470.1
9	450-520 (UW(2))	TX1:450 RX1:450.1	TX2:467.5 RX2:467.6	TX3:485 RX3:485.1	TX4:502.5 RX4:502.6	TX5:520 RX5:520.1

Channel data is shown as follows:

Channel	RX Frequency (MHZ)	TX Frequency (MHZ)	Signaling	Power	Channel Spacing
1	RX1	TX1	None	H	25KHZ
2	RX3	TX3	None	H	25KHZ
3	RX5	TX5	None	H	25KHZ
4	RX1	RX1	None	LO	20KHZ
5	RX3	RX3	None	LO	20KHZ
6	RX5	RX5	None	LO	20KHZ
7	RX1	RX1	None	LO	12.5KHZ
8	RX3	RX3	None	LO	12.5KHZ
9	RX5	RX5	None	LO	12.5KHZ
10	RX3	RX3	67HZ	LO	25KHZ
11	RX3	RX3	254.1HZ	LO	25KHZ
12	RX3	RX3	023	LO	25KHZ
13	RX3	RX3	754	LO	25KHZ
14	RX3	RX3	2-TONE	LO	25KHZ
15	RX3	RX3	5-TONE	LO	25KHZ
16	RX3	RX3	None	LO	25KHZ

**3. Wireless Clone Mode**

Select wireless clone from optional functions in programming software, turn the power on while holding down PTT and SK1 key simultaneously for 2 seconds, then the source and target radios enter wireless clone mode with orange LED flashing one time (After the source and target radios are turned on and stay in the same channel, hold down PTT on the source radio to begin cloning) . During cloning, the LED of the source radio glows red and that of the target radio glows green. The target radio flashes green and two Beeps are heard in case of successful cloning, it flashes red in case of cloning failure.

**4. User Wired Clone Mode**

Select Wired Clone from optional functions in programming software, turn the power on while holding down PTT and SK2 key simultaneously for 2 seconds, then the source radio enters user wired clone mode with orange LED flashing twice. Then directly turn the target radio on. Hold down PTT on the source radio to begin cloning. During cloning, the LED of the source radio glows red and that of the target radio glows green. The LED of the source radio goes out in case of successful cloning, it flashes red in case of cloning failure.

**5. Manual Adjust Mode**

Manual adjustment is performed to adjust frequency deviation, power, sensitivity, squelch, etc.

**Note:** Prior to entry for mode startup, select Manual Adjust Mode from optional functions in programming software.

## Manual Adjust Mode Description

**(1) Enter the manual adjust mode**

Turn the power on by holding down TK and SK2 key simultaneously for 2 seconds, then the radio enters manual adjust mode with red LED flashing twice.

**(2) Channel number on the channel selector knob**

Each channel on the channel selector knob is defined as a setting item. 25KHz bandwidth and low frequency (F1) is set on the next channel each time the Channel Selector Knob is rotated.

**(3) SK2 key**

Used to set the frequency. 1 point tuning adjusts center frequency; 3 point tuning adjusts F1, F3, F5; 5 point tuning adjusts F1-F5.

The frequency toggles from low frequency to high frequency. Green LED flashes once when F1 is selected.

**(4) TK key**

Use to toggle the channel bandwidth among 25 KHz, 20 KHz and 12.5 KHz. Red LED flashes once when the bandwidth is 25 KHz.

**(5) PTT/SK1**

PTT→Increase

SK1→Decrease

PTT/SK1 is pressed to adjust upward/downward. Red LED glows indicating the maximum adjust value and green LED indicating the minimum value. Hold down the key to increase/decrease the adjustment value continuously.

Press PTT key to save the BATT LOW, and SQL settings, then green LED glows once.

**(6) Select adjustment item group**

The first group of adjustment items is selected when the radio enters the manual adjust mode.

Turn to CH16 and press PTT key to enter the next group. Press it again to return to the first group.

Orange LED flashes once when the first group of adjustment items is selected and flashes twice when the second group is selected.

**(7) Frequency Setting**

5 point tuning (MHz) TX: { TX1, TX2, TX3, TX4, TX5 }  
RX: { RX1, RX2, RX3, RX4, RX5 }

3 point tuning (MHz) TX: { TX1, TX3, TX5 }  
RX: { RX1, RX3, RX5 }

1 point tuning (MHz) TX: { TX3 }  
RX: { RX3 }



First Group of Adjustment Items				
Channel No.	Adjustment Item	Remarks		
		25KHz	20KHz	12.5KHz
1	TX power LOW	5 point tuning		
2	CDCSS PLL balance	3 point tuning (wideband)		
3	CDCSS deviation	3 point tuning (wideband)	1 point tuning	1 point tuning (narrowband)
4	CTCSS deviation LOW (67Hz)	3 point tuning (wideband)	1 point tuning	1 point tuning (narrowband)
5	CTCSS deviation CENTER (136.5Hz)	3 point tuning (wideband)	1 point tuning	1 point tuning (narrowband)
6	CTCSS deviation HIGH (254.1Hz)	3 point tuning (wideband)	1 point tuning	1 point tuning (narrowband)
7	AK2346 audio deviation (TX)	3 point tuning (wideband)	1 point tuning	1 point tuning (narrowband)
8	2 TONE deviation	1 point tuning (wideband)	1 point tuning	1 point tuning (narrowband)
9	DTMF deviation	1 point tuning (wideband)	1 point tuning	1 point tuning (narrowband)
10	MSK deviation	3 point tuning (wideband)	1 point tuning	1 point tuning (narrowband)
11	TX power HIGH	5 point tuning		
12	TX voltage LOW	1 point tuning		

Second Group of Adjustment Items				
Channel No.	Adjustment Item	Remarks		
		25KHz	20KHz	12.5KHz
1	RX sensitivity	5 point tuning		
2	AK2346 volume (RX)	1 point tuning (wideband)	1 point tuning	1 point tuning (narrowband)
3	Squelch level 3 (OPEN)	5 point tuning (wideband)	1 point tuning	1 point tuning (narrowband)
4	Squelch level 3 (SQUELCH)	5 point tuning (wideband)	1 point tuning	1 point tuning (narrowband)
5	Squelch level 9 (OPEN)	5 point tuning (wideband)	1 point tuning	1 point tuning (narrowband)
6	Squelch level 9 (SQUELCH)	5 point tuning (wideband)	1 point tuning	1 point tuning (narrowband)
7	RX voltage LOW	1 point tuning		

**6. PC Adjust Mode**

Select test mode from programming items in programming software and then begin adjustment.

# Circuit Description

## 1. Power Supply

Power supply of the radio is derived from the battery, which supplies battery B+ after passing through fuse 3A and then feeds through power switch. The power supplies voltage for three AVRs. IC504 supplies 5V (M5V) voltage for the control circuit. And IC503 supplies 5V (C5V) voltage for the shared circuit. IC502 supplies voltage for the transmit/receive circuit. In transmit mode, T5C becomes low voltage and Q502 is turned on to supply 5V (T5v) voltage for the transmit circuit. In receive mode, R5C becomes low voltage and Q504 is turned on to supply 5V (R5V) voltage for the receive circuit.

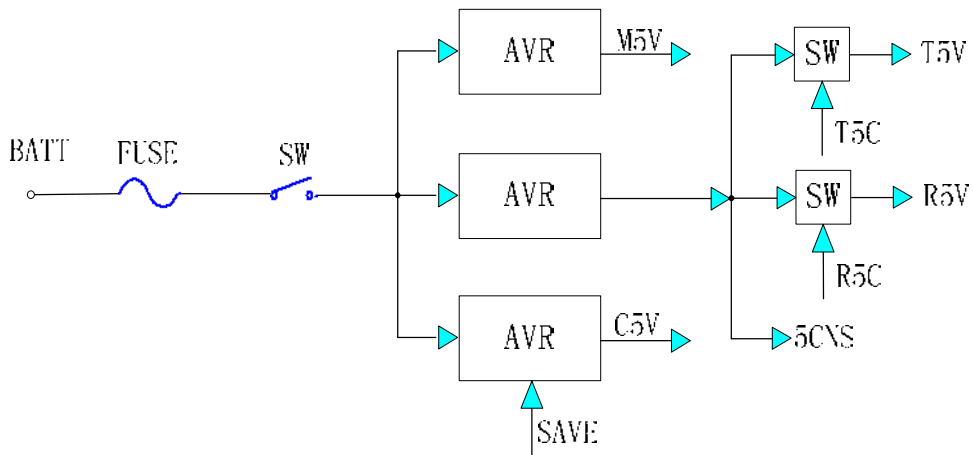


Fig. 1 Power Supply Block Diagram

## 2. PLL Frequency Synthesizer

PLL circuit generates the first local oscillator signal for reception and RF signal for transmission.

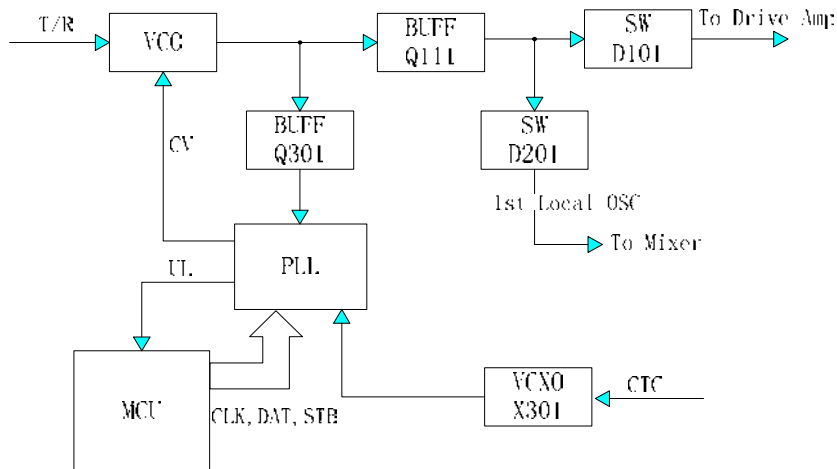


Fig.2 PLL Block Diagram

**1) PLL Circuit**

Step frequency of PLL can be 2.5 KHz, 5.0 KHz or 6.25 KHz. A 16.8MHz reference oscillator signal is divided at IC301 by a counter to generate a 2.5 KHz, 5.0 KHz or 6.25 KHz reference frequency. Output signal from VCO is buffer amplified by Q301 and divided at IC301 by a frequency divider. The divided signal is compared with 2.5 KHz, 5.0 KHz or 6.25 KHz reference signal in the phase comparator of IC301. The output signal from phase comparator is filtered through a low pass filter to generate a level D.C., and the level D.C. controls oscillator frequency by controlling VCO.

**2) VCO**

The operating frequency is generated by Q302 in transmit mode and by Q307 in receive mode. Operating frequency generate a control voltage by phase comparator to control varactor diodes so that the oscillator frequency is consistent with the MCU preset frequency(D301、 D302、 D303 and D304 in transmit mode, and D307、 D308、 D309 and D310 in receive mode). T/R pin is set high level in receive mode, and low level in transmit mode. The output from Q302 and Q307 is amplified by Q304 and sent to buffer amplifier.

**3) Unlock Detector**

An unlock condition appears if low level appears at MUXOUT pin of IC301. Transmission is forbidden if this condition is detected by microprocessor.

**3. Receiver**

The receiver utilizes double conversion superheterodyne (UHF)/(VHF).

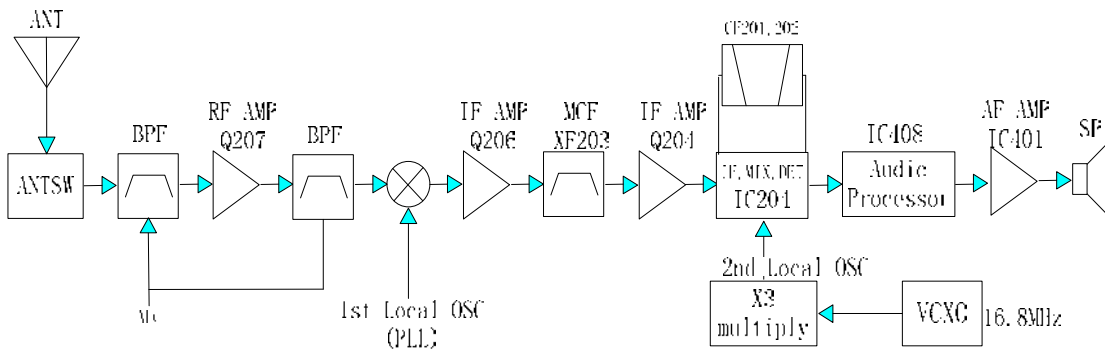


Fig. 3 Receiver Section Configuration

**1) Front-end RF Amplifier**

The signal from antenna is amplified at RF amplifier (Q207) after passing through a transmit/receive circuit and a band pass filter. Before passing the first mixer, the amplified signal is filtered through another band pass filter to remove unwanted signals.

**2) First Mixer**

The signal from RF amplifier is mixed with the first local from PLL frequency synthesizer circuit at the first mixer (IC202) to create a 49.95MHz first IF signal. The first IF signal is then fed through a crystal filter (XF203) to further remove unwanted signals.

**3) IF Amplifier**

The first IF signal is amplified by Q206 before passing through crystal filter and by Q204 after crystal filter and then enters IF processing chip IC204. The signal from IC204 is mixed with the second oscillator signal again in IC204 to create a 450 KHz second IF signal. The second IF signal then passes through a 450KHz ceramic filter (wideband: CF201, narrowband: CF202) to eliminate unwanted signals before it is amplified and detected in IC204.

**4) Narrowband/Wideband Switch Circuit**

Pin WCON and NCON of IC500 outputs wideband (high level) and narrowband (low level) controlling signal respectively to turn on corresponding diode-connector, and to choose ceramic filter CF201 (wideband) or CF202 (narrowband) to filter useless spurious signal.

**5) AF Amplifier**

The resulting AF signal from IC204 enters base band processing chip IC408. The processed AF signal is then amplified by an AF power amplifier (IC401) to drive the speaker.

**4. Transmitter**

**1) AF and Signaling**

AF signal from the microphone is amplified and low-pass-filtered in IC402 before it enters base band processing chip IC408, which also enters CTC/CDC/DTMF/2-Tone/5-Tone etc signaling generated by CPU. The IC408 processed mixing signal enters VCO for direct FM modulation (see fig.5).

**2) RF Power Amplifier**

The transmit signal from VCO buffer amplifier (Q111) is amplified by Q101 and Q102. The amplified signal is then amplified by the power amplifier Q103 and Q104 (including a two-stage FET amplifier) to create 4.0W (UHF)/5.0W (VHF) RF power (see Fig. 6).

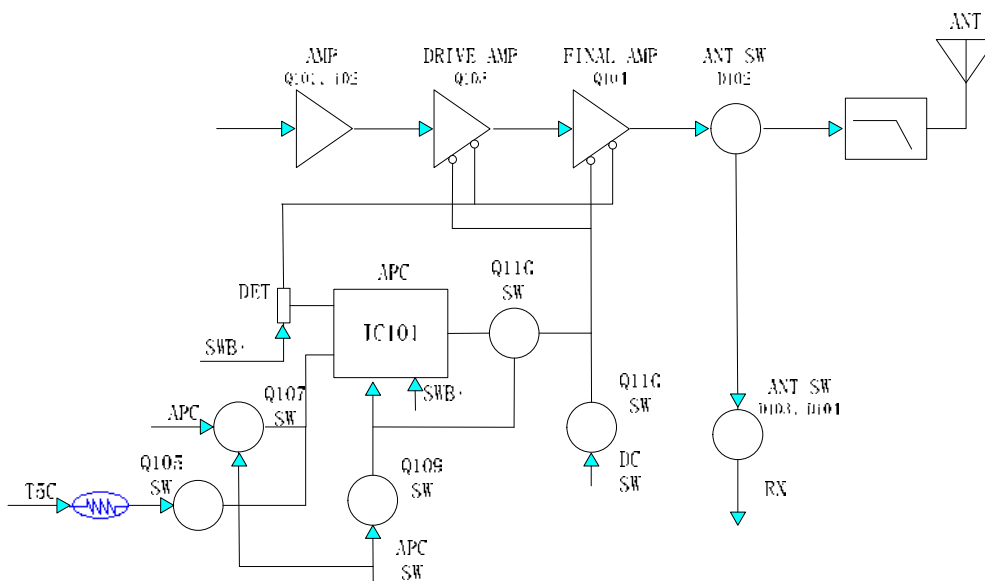


Fig. 4 APC System



**3) MSK**

**Transmit:** MSK signal produced by base band processing IC enters VCO together with AF signal for modulation.

**Receive:** MSK input of demodulating IC is sent to AK2346 for demodulation after being amplified. The demodulated signal is then sent to MCU for decoding.

**4) AF**

**Transmit:** AF signal from MIC enters base band processed IC for amplification, pre-emphasis etc. after being amplified. And then it enters VCO for modulation.

**Receive:** Demodulated AF signal enters the base band processing IC for amplification, de-emphasis etc. after being amplified. And then it enters AF power amplifier driven speaker.

Base band processed chip provides functions for processing signal as amplifying, filtering, emphasizing, scrambling, companding, and amplitude limiting.

**6. Control System**

The IC500 CPU operates at 9.8304 MHz.

The block diagram of MCU control system is shown as following:

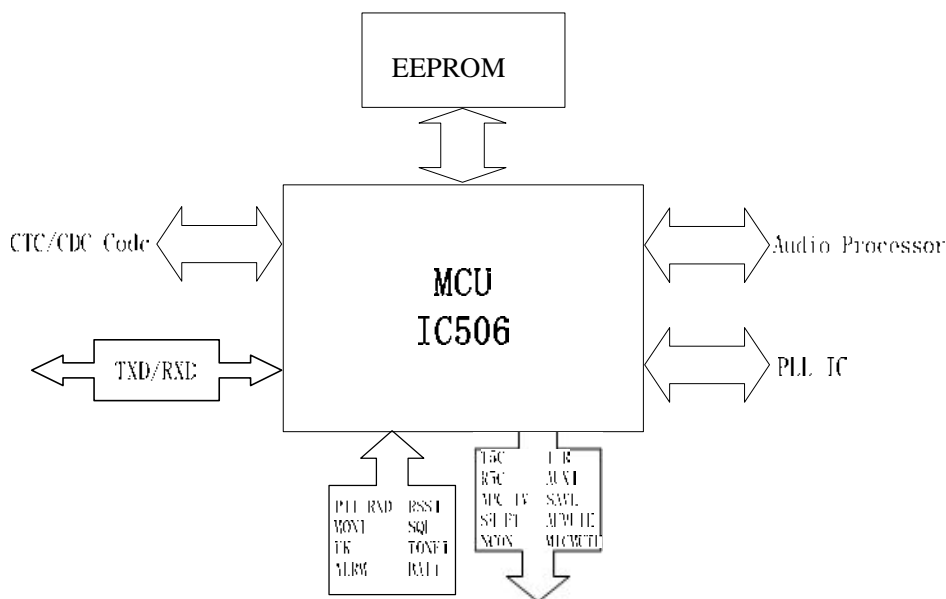


Fig.6 MCU Block Diagram

Circuit in this section is mainly comprised of MCU, EEPROM etc.

MCU control circuit accomplishes the following functions: accomplish the reset initialization according to the programmed feature of the radio when power on; detect keying signal and monitor battery voltage; send necessary frequency data to PLL according to encode of the channel; switch and control transmit/receive according to the signal input from PTT; turn on/off the mute circuit according to the input signaling decode signal and squelch level signal; output control signal to control the light/off of LED; control signaling process IC to perform tasks.

**CPU Pins**

**1. CPU pins are as follows:**

No.	MCU Port Name	Port Name	Input/Output	Features
1	P94/DA1	APC/TV	O	Automatic Power Control
2	P93/DA0	TONEO	O	DTMF/2-5Tone/Beep tone output/ ALARM tone output
3	P92/TB2IN	NC	O	NC
4	P91		O	
5	P90	SHIFT	O	Clock beat-frequency
6	BYTE	BYTE	I	
7	CNVSS	CNVSS	I	
8	P87/XCIN		O	
9	P86/XCOUT		O	
10	RESET	RESET	I	Input low level to enter all reset mode
11	XOUT	XOUT	O	Crystal oscillator output pin
12	VSS	GND	I	GND
13	XIN	XIN	I	Crystal oscillator output pin
14	VCC	VCC	I	VCC
15	P85/NMI	NMI	I	
16	P84/INT2	AFCK	I	2346 TCLK
17	P83/INT1	AUX1	O	Indication for external scrambler
18	P82/INT0	AFRDF	I	2346 RDF
19	P81		O	
20	P80	PTTCO	O	PTTCO
21	P77	NC	O	
22	P76/TA3O	CTCOUT	O	CTC_OUT (PWM) TO VCO
23	P75	NC	O	
24	P74/TA2O	CTC_PLL	O	CTC_PLL (PWM)
25	P73	AUX2	COM5	Indication for receive/transmit status
26	P72/TA1O	1/2OSC	O	
27	P71/RxD2/TB5IN	TONEI	O	
28	P70/TxD2			
29	P67/TxD1	TXD	O	Serial date output.
30	P66/RxD1	RXD	I	Serial date input.
31	P65		I	
32	P64		O	
33	P63/TxD0		I	COM4 MANDOWN Input Pin
34	P62/RxD0		O	COM3



35	P61			COM1
36	P60			COM2
37	P57/RDY	EEDAT	I/O	EEPROM DATA, data input/output.
38	P56/ALE	EECLK	O	EEPROM CLK
39	P55/HOLD			
40	P54/HLDA	AFDIR	O	AK2346 DIR
41	P53/BLCK	AFSCK	O	2346 SCLK
42	P52/RD	NC	O	
43	P51/BHE	AFDT	O	2346 TDATA
44	P50/WR	WE	I	
45	P47/CS3	CODIO	I/O	Common data control (AK2346 DATA).
46	P46/CS2			
47	P45/CS1	SAVE	O	SAVE, power save control
48	P44/CS0	R5C	O	R5C Rx circuit power supply control
49	P43/A19	T5C	O	T5C Tx circuit power supply control
50	P42/A18			
51	P41/A17			
52	P40/A16			
53	P37/A15			
54	P36/A14			
55	P35/A13			
56	P34/A12			
57	P33/A11			
58	P32/A10			
59	P31/A9			
60	Vcc	VCC	I	VCC
61	P30/A8	NCON	O	Narrowband control
62	Vss	GND	I	GND
63	P27/A7	AFCO	O	AFCO
64	P26/A6	WCON	O	Wideband control
65	P25/A5	LEDR	O	Red light control: H, lit; L, out
66	P24/A4	LEDG	O	Green light control: H, lit; L, out
67	P23/A3	EN2	I	EN2
68	P22/A2	EN4	I	EN4
69	P21/A1	EN3	I	EN3
70	P20/A0	EN1	I	EN1
71	P17/INT5			
72	P16/INT4	AFMUTE		

73	P15/INT3			
74	P14	TK	I	Top Key
75	P13	DC-Switch	O	
76	P12	PLL_UL	I	PLL unlock detect
77	P11	PLL_STB	O	PLL strobe output
78	P10	MICMUTE	O	MICMUTE
79	P07/D7	Option1	I	Programming cable detect.
80	P06/D6	PLL_DATA	O	PLL date input
81	P05/D5	PLL_CLK	O	PLL clock output
82	P04/D4	T/R	O	Receive/transmit control
83	P03/D3	APC-Switch	O	
84	P02/D2	PTT	I	PTT
85	P01/D1	SK1	I	Side Key1
86	P00/D0	SK2	I	Side Key2
87	P107/AN7		I	MIC signal input
88	P106/AN6	BATT	I	BATT, battery voltage detect
89	P105/AN5	BATTSEL	I	Battery detect
90	P104/AN4	NC	I	
91	P103/AN3	SELF	I	Reset mode control: ground this pin to enter reset mode.
92	P102/AN2	RSSI	I	RSSI detect pin
93	P101/AN1	SQL	I	Squelch level input
94	AVSS	GND	I	A/D conversion power supply input.
95	P100/AN0	CTCIN	I	CTCSS output
96	VREF	VCC	I	A/D conversion reference voltage
97	AVCC	VCC	I	A/D conversion power supply input.
98	P97		O	
99	P96		O	
100	P95		O	

**TC-700 Part List 1**

**TC-700 VHF Part List1**

No	P/N	Description	Qty	Ref. No.	Print No.
1	3101051500020	Chip resistor 0402 15PF J 50V	1	C100	B3G
2	3101051020010	Chip resistor 0402 1000PF K 50V	1	C101	B3F
3	3101051500020	Chip resistor 0402 15PF J 50V	1	C102	B3F
4	3101051800010	Chip resistor 0402 18PF J 50V	1	C103	B4F
5	3101051020010	Chip resistor 0402 1000PF K 50V	1	C104	B4F
6	3101051510000	Chip resistor 0402 150PF(±5%)(50V)	1	C105	B4F
7	3101051020010	Chip resistor 0402 1000PF K 50V	1	C106	B4E
8	3101051020010	Chip resistor 0402 1000PF K 50V	1	C107	B4E
9	3101051020010	Chip resistor 0402 1000PF K 50V	1	C108	B4F
10	3101051040060	Chip resistor 0402 0.1UF K 10V	1	C109	B3F
11	3101051020010	Chip resistor 0402 1000PF K 50V	1	C110	B4F
12	3101061020000	Chip resistor 0603 1000PF K 50V	1	C111	B3E
13	3101051040060	Chip resistor 0402 0.1UF K 10V	1	C112	B4E
14	3101051050000	Chip resistor 0402 1UF Z 6.3V	1	C113	B4E
15	3101051020010	Chip resistor 0402 1000PF K 50V	1	C114	B4E
16	3101054710010	Chip resistor 0402 470PF K 50V	1	C115	B3D
17	3101051020010	Chip resistor 0402 1000PF K 50V	1	C116	B4E
18	3101062210000	Chip resistor 0603 220PF J 50V	1	C117	B4E
19	3101051020010	Chip resistor 0402 1000PF K 50V	1	C118	B5E
20	3101060300010	Chip resistor 0603 3PF B 50V	1	C119	B5D
21	3101051020010	Chip resistor 0402 1000PF K 50V	1	C120	B4D
22	3101051030020	Chip resistor 0402 0.01UF K 25V	1	C121	B4D
23	3101051040060	Chip resistor 0402 0.1UF K 10V	1	C122	B4C
24	3101061050060	Chip resistor 0603 1UF K 10V	1	C123	B3C
25	3101051020010	Chip resistor 0402 1000PF K 50V	1	C124	B3C
26	3101061590010	Chip resistor 0603 1.5PF B 50V	1	C125	B4C
27	3101061010010	Chip resistor 0603 100PF J 50V	1	C126	B4C
28	3101062000000	Chip resistor 0603 20PF J 50V	1	C127	B4C
29	3101061000000	Chip resistor 0603 10PF J 50V	1	C130	B4C
30	3101068200000	Chip resistor 0603 82PF J 50V	1	C131	B4C
31	3101054710010	Chip resistor 0402 470PF K 50V	1	C132	T4E
32	3101051020010	Chip resistor 0402 1000PF K 50V	1	C133	B4C
33	3101062700010	Chip resistor 0603 27PF J 50V	1	C134	B4B
34	3101061020000	Chip resistor 0603 1000PF K 50V	1	C135	B4B
35	3101061200000	Chip resistor 0603 12PF J 50V	1	C136	B4B
36	3101061000000	Chip resistor 0603 10PF J 50V	1	C137	B4B
37	3101062200010	Chip resistor 0603 22PF J 50V	1	C138	B4B
38	3101060900010	Chip resistor 0603 9PF B 50V	1	C139	B4B
39	3101062000000	Chip resistor 0603 20PF J 50V	1	C140	B4B
40	3101061200000	Chip resistor 0603 12PF J 50V	1	C141	B4B
41	3101061000000	Chip resistor 0603 10PF J 50V	1	C142	B4B
42	3101054700010	Chip resistor 0402 47PF J 50V	1	C144	B3B
43	3101054710010	Chip resistor 0402 470PF K 50V	1	C145	B5F
44	3101061050060	Chip resistor 0603 1UF K 10V	1	C146	T3B
45	3101051030020	Chip resistor 0402 0.01UF K 25V	1	C147	B3D
46	3101054710010	Chip resistor 0402 470PF K 50V	1	C148	B3D
47	3101054710010	Chip resistor 0402 470PF K 50V	1	C149	T3B
48	3104074750030	Ta-capacitor 0805 4.7UF M 10V	1	C150	T4F
49	3101051010030	Chip resistor 0402 100PF J 50V	1	C152	T5E

**TC-700 Part List 1**

**TC-700 VHF Part List1**

No	P/N	Description	Qty	Ref. No.	Print No.
50	3101054710010	Chip resistor 0402 470PF K 50V	1	C153	T4F
51	3101054710010	Chip resistor 0402 470PF K 50V	1	C154	T4E
52	3101051020010	Chip resistor 0402 1000PF K 50V	1	C155	B3G
53	3101051020010	Chip resistor 0402 1000PF K 50V	1	C156	B3G
54	3101051000020	Chip resistor 0402 10PF D 50V	1	C157	B3G
55	3101051020010	Chip resistor 0402 1000PF K 50V	1	C158	B3G
56	3101051040060	Chip resistor 0402 0.1UF K 10V	1	C159	B3G
57	3101062200010	Chip resistor 0603 22PF J 50V	1	C161	B4D
58	3101051020010	Chip resistor 0402 1000PF K 50V	1	C201	B2F
59	3101050400010	Chip resistor 0402 4PF B 50V	1	C202	B2F
60	3101051800010	Chip resistor 0402 18PF J 50V	1	C203	B2F
61	3101051800010	Chip resistor 0402 18PF J 50V	1	C204	B2F
62	3101051030020	Chip resistor 0402 0.01UF K 25V	1	C205	B2F
63	3101051040060	Chip resistor 0402 0.1UF K 10V	1	C206	B1H
64	3101051800010	Chip resistor 0402 18PF J 50V	1	C207	B2F
65	3101051040060	Chip resistor 0402 0.1UF K 10V	1	C208	B1H
66	3101054710010	Chip resistor 0402 470PF K 50V	1	C209	B2G
67	3101051020010	Chip resistor 0402 1000PF K 50V	1	C210	B2G
68	3101052210010	Chip resistor 0402 220PF J 50V	1	C211	B2G
69	3101054710010	Chip resistor 0402 470PF K 50V	1	C212	B2G
70	3101051040060	Chip resistor 0402 0.1UF K 10V	1	C213	B2G
71	3101051040060	Chip resistor 0402 0.1UF K 10V	1	C214	B1H
72	3101051040060	Chip resistor 0402 0.1UF K 10V	1	C215	B2H
73	3101051030020	Chip resistor 0402 0.01UF K 25V	1	C219	B2G
74	3104071060010	Ta-capacitor 0805 10UF M 6.3V	1	C220	B2G
75	3101061050060	Chip resistor 0603 1UF K 10V	1	C221	T1G
76	3101051820000	Chip resistor 0402 1800PF K 50V	1	C222	T1G
77	3101051040060	Chip resistor 0402 0.1UF K 10V	1	C224	B2F
78	3101058200000	Chip resistor 0402 82PF J 50V	1	C225	B1G
79	3101051030020	Chip resistor 0402 0.01UF K 25V	1	C226	T1G
80	3101051040060	Chip resistor 0402 0.1UF K 10V	1	C227	T1G
81	3101053300000	Chip resistor 0402 33PF J 50V	1	C228	B1G
82	3101051040060	Chip resistor 0402 0.1UF K 10V	1	C229	B1G
83	3101051030020	Chip resistor 0402 0.01UF K 25V	1	C230	B1G
84	3101051040060	Chip resistor 0402 0.1UF K 10V	1	C231	T1H
85	3101050400010	Chip resistor 0402 4PF B 50V	1	C233	B1F
86	3101051030020	Chip resistor 0402 0.01UF K 25V	1	C236	B1E
87	3101051030020	Chip resistor 0402 0.01UF K 25V	1	C237	B1E
88	3101051020010	Chip resistor 0402 1000PF K 50V	1	C238	B1E
89	3101051030020	Chip resistor 0402 0.01UF K 25V	1	C239	B1E
90	3101058200000	Chip resistor 0402 82PF J 50V	1	C240	B1E
91	3101051030020	Chip resistor 0402 0.01UF K 25V	1	C241	B2E
92	3101051030020	Chip resistor 0402 0.01UF K 25V	1	C243	B2D
93	3101052700000	Chip resistor 0402 27PF J 50V	1	C244	B2D
94	3101051800010	Chip resistor 0402 18PF J 50V	1	C245	B2D
95	3101051000020	Chip resistor 0402 10PF D 50V	1	C246	B2D
96	3101051200020	Chip resistor 0402 12PF J 50V	1	C247	B2D
97	3101051010030	Chip resistor 0402 100PF J 50V	1	C248	B3D
98	3101051200020	Chip resistor 0402 12PF J 50V	1	C249	B2D

**TC-700 Part List 1**

**TC-700 VHF Part List1**

No	P/N	Description	Qty	Ref. No.	Print No.
99	3101051030020	Chip resistor 0402 0.01UF K 25V	1	C250	B3D
100	3101053300000	Chip resistor 0402 33PF J 50V	1	C251	B2D
101	3101051010030	Chip resistor 0402 100PF J 50V	1	C252	B3C
102	3101051030020	Chip resistor 0402 0.01UF K 25V	1	C253	B2C
103	3101051020010	Chip resistor 0402 1000PF K 50V	1	C256	B2C
104	3101051040060	Chip resistor 0402 0.1UF K 10V	1	C257	B2B
105	3101051510000	Chip resistor 0402 150PF(±5%)(50V)	1	C258	B3B
106	3101051020010	Chip resistor 0402 1000PF K 50V	1	C259	B3C
107	3101051040060	Chip resistor 0402 0.1UF K 10V	1	C261	B3C
108	3101051020010	Chip resistor 0402 1000PF K 50V	1	C262	B3C
109	3101054700010	Chip resistor 0402 47PF J 50V	1	C263	B3B
110	3101051010030	Chip resistor 0402 100PF J 50V	1	C264	B3B
111	3101051000020	Chip resistor 0402 10PF D 50V	1	C265	B3B
112	3101051020010	Chip resistor 0402 1000PF K 50V	1	C266	B3B
113	3101051500020	Chip resistor 0402 15PF J 50V	1	C267	B3B
114	3101050400010	Chip resistor 0402 4PF B 50V	1	C268	B1E
115	3101051500020	Chip resistor 0402 15PF J 50V	1	C270	B3B
116	3101051010030	Chip resistor 0402 100PF J 50V	1	C273	B3B
117	3101051020010	Chip resistor 0402 1000PF K 50V	1	C301	B4I
118	3101051000020	Chip resistor 0402 10PF D 50V	1	C302	B4I
119	3101051000020	Chip resistor 0402 10PF D 50V	1	C303	B3I
120	3101051030020	Chip resistor 0402 0.01UF K 25V	1	C304	B3H
121	3101065600000	Chip resistor 0603 56PF J 50V	1	C305	B3G
122	3101062200010	Chip resistor 0603 22PF J 50V	1	C306	B3H
123	3101060590010	Chip resistor 0603 0.5PF B 50V	1	C307	B3G
124	3101060600010	Chip resistor 0603 6PF B 50V	1	C308	B4H
125	3101060900010	Chip resistor 0603 9PF B 50V	1	C309	B3H
126	3101051020010	Chip resistor 0402 1000PF K 50V	1	C310	B4G
127	3101061030010	Chip resistor 0603 0.01UF K 25V	1	C311	B3G
128	3101060590010	Chip resistor 0603 0.5PF B 50V	1	C312	B4G
129	3101063300000	Chip resistor 0603 33PF J 50V	1	C313	B3G
130	3101051020010	Chip resistor 0402 1000PF K 50V	1	C314	B4G
131	3101054710010	Chip resistor 0402 470PF K 50V	1	C315	B5G
132	3104071060010	Ta-capacitor 0805 10UF M 6.3V	1	C316	B5G
133	3101054710010	Chip resistor 0402 470PF K 50V	1	C317	B5G
134	3101051020010	Chip resistor 0402 1000PF K 50V	1	C318	B5G
135	3101063300000	Chip resistor 0603 33PF J 50V	1	C319	B5H
136	3101061000000	Chip resistor 0603 10PF J 50V	1	C320	B4G
137	3101063690000	Chip resistor 0603 3.6PF B 50V	1	C321	B4G
138	3101060500010	Chip resistor 0603 5PF B 50V	1	C322	B4G
139	3101060400010	Chip resistor 0603 4PF B 50V	1	C323	B4G
140	3101061030010	Chip resistor 0603 0.01UF K 25V	1	C324	B4H
141	3101060590010	Chip resistor 0603 0.5PF B 50V	1	C325	B4G
142	3104071040010	Ta-capacitor 0805 0.1UF M 20V	1	C326	B4I
143	3104072250010	Ta-capacitor 0805 2.2UF M 10V	1	C327	B5I
144	3101072240000	Chip resistor 0805 0.22UF K 25V	1	C328	B5I
145	3101051010030	Chip resistor 0402 100PF J 50V	1	C329	B4I
146	3101051000020	Chip resistor 0402 10PF D 50V	1	C330	B3J
147	3101051020010	Chip resistor 0402 1000PF K 50V	1	C331	B4J

**TC-700 Part List 1**

**TC-700 VHF Part List1**

No	P/N	Description	Qty	Ref. No.	Print No.
148	3101051020010	Chip resistor 0402 1000PF K 50V	1	C332	B4J
149	3101051040060	Chip resistor 0402 0.1UF K 10V	1	C334	B4J
150	3101051000020	Chip resistor 0402 10PF D 50V	1	C335	B3J
151	3104074750030	Ta-capacitor 0805 4.7UF M 10V	1	C336	B5J
152	3101051040060	Chip resistor 0402 0.1UF K 10V	1	C337	B5J
153	3101051040060	Chip resistor 0402 0.1UF K 10V	1	C338	B5I
154	3101051010030	Chip resistor 0402 100PF J 50V	1	C339	B5I
155	3101051010030	Chip resistor 0402 100PF J 50V	1	C340	B5J
156	3101051010030	Chip resistor 0402 100PF J 50V	1	C341	B5J
157	3104071060010	Ta-capacitor 0805 10UF M 6.3V	1	C342	B3I
158	3101054710010	Chip resistor 0402 470PF K 50V	1	C343	B3I
159	3104074750030	Ta-capacitor 0805 4.7UF M 10V	1	C344	B3I
160	3101051040060	Chip resistor 0402 0.1UF K 10V	1	C345	B2I
161	3101051020010	Chip resistor 0402 1000PF K 50V	1	C346	B3I
162	3101051020010	Chip resistor 0402 1000PF K 50V	1	C347	B2I
163	3101051030020	Chip resistor 0402 0.01UF K 25V	1	C348	B2I
164	3101061020000	Chip resistor 0603 1000PF K 50V	1	C349	B2H
165	3101066800000	Chip resistor 0603 68PF J 50V	1	C351	B2H
166	3101063000010	Chip resistor 0603 30PF J 50V	1	C352	B2G
167	3104071050010	Ta-capacitor 0805 1UF M 16V	1	C354	B3G
168	3101051040060	Chip resistor 0402 0.1UF K 10V	1	C356	B4G
169	3101051030020	Chip resistor 0402 0.01UF K 25V	1	C357	B5G
170	3101051020010	Chip resistor 0402 1000PF K 50V	1	C358	B4I
171	3101051500020	Chip resistor 0402 15PF J 50V	1	C359	B4I
172	3101052200010	Chip resistor 0402 22PF J 50V	1	C360	B4I
173	3101052200010	Chip resistor 0402 22PF J 50V	1	C361	B4I
174	3101054710010	Chip resistor 0402 470PF K 50V	1	C362	B5I
175	3101052230000	Chip resistor 0402 0.022UF K 16V	1	C401	T1F
176	3101054700010	Chip resistor 0402 47PF J 50V	1	C402	T1E
177	3101051050000	Chip resistor 0402 1UF Z 6.3V	1	C403	T1E
178	3101051040060	Chip resistor 0402 0.1UF K 10V	1	C404	T1E
179	3101051040060	Chip resistor 0402 0.1UF K 10V	1	C405	T1E
180	3101051020010	Chip resistor 0402 1000PF K 50V	1	C406	T1E
181	3101052240010	Chip resistor 0402 0.22UF Z 10V	1	C407	T1F
182	3101051020010	Chip resistor 0402 1000PF K 50V	1	C409	B2J
183	3101055630000	Chip resistor 0402 0.056UF K 10V	1	C410	B3K
184	3104071060010	Ta-capacitor 0805 10UF M 6.3V	1	C412	T2B
185	3101054710010	Chip resistor 0402 470PF K 50V	1	C413	T1F
186	3101102260010	Chip resistor 1206 22uF +80%/-20% 10V	1	C415	T1F
187	3101051040060	Chip resistor 0402 0.1UF K 10V	1	C416	T1E
188	3101051040060	Chip resistor 0402 0.1UF K 10V	1	C417	T2E
189	3104071060010	Ta-capacitor 0805 10UF M 6.3V	1	C418	T2F
190	3101051030020	Chip resistor 0402 0.01UF K 25V	1	C419	T2F
191	3101054700010	Chip resistor 0402 47PF J 50V	1	C420	T1E
192	3101051830000	Chip resistor 0402 0.018UF K 16V	1	C421	B2J
193	3101052230000	Chip resistor 0402 0.022UF K 16V	1	C422	T1D
194	3101054710010	Chip resistor 0402 470PF K 50V	1	C423	T1E
195	3101051530000	Chip resistor 0402 0.015UF K 16V	1	C424	B2J
196	3101051050000	Chip resistor 0402 1UF Z 6.3V	1	C425	B3J

**TC-700 Part List 1**

**TC-700 VHF Part List1**

No	P/N	Description	Qty	Ref. No.	Print No.
197	3101054710010	Chip resistor 0402 470PF K 50V	1	C426	B3K
198	3101054730000	Chip resistor 0402 0.047UF K 10V	1	C427	T1E
199	3101051820000	Chip resistor 0402 1800PF K 50V	1	C430	B3J
200	3101051040060	Chip resistor 0402 0.1UF K 10V	1	C432	B3J
201	3101054700010	Chip resistor 0402 47PF J 50V	1	C444	B2I
202	3101061050060	Chip resistor 0603 1UF K 10V	1	C445	B2I
203	3101056830000	Chip resistor 0402 0.068UF K 6.3V	1	C446	B4J
204	3101052220010	Chip resistor 0402 2200PF K 50V	1	C447	B4K
205	3101051230000	Chip resistor 0402 0.012UF K 16V	1	C448	B4J
206	3101053930000	Chip resistor 0402 0.039UF K 10V	1	C449	B4K
207	3101051030020	Chip resistor 0402 0.01UF K 25V	1	C450	B4K
208	3101052210010	Chip resistor 0402 220PF J 50V	1	C451	B4K
209	3104074750030	Ta-capacitor 0805 4.7UF M 10V	1	C452	B4K
210	3101051040060	Chip resistor 0402 0.1UF K 10V	1	C458	B1K
211	3101051040060	Chip resistor 0402 0.1UF K 10V	1	C459	T1J
212	3101055620010	Chip resistor 0402 5600PF K 25V	1	C460	T1J
213	3101051030020	Chip resistor 0402 0.01UF K 25V	1	C461	T1J
214	3101051020010	Chip resistor 0402 1000PF K 50V	1	C462	T1J
215	3101051040060	Chip resistor 0402 0.1UF K 10V	1	C463	T1J
216	3104074750030	Ta-capacitor 0805 4.7UF M 10V	1	C464	T1K
217	3101051030020	Chip resistor 0402 0.01UF K 25V	1	C465	T1K
218	3101051050000	Chip resistor 0402 1UF Z 6.3V	1	C467	B2I
219	3101051040060	Chip resistor 0402 0.1UF K 10V	1	C469	B2J
220	3104072260010	Ta-capacitor 0805 22UF M 6.3V	1	C470	B2J
221	3101052200010	Chip resistor 0402 22PF J 50V	1	C471	B1J
222	3101052200010	Chip resistor 0402 22PF J 50V	1	C472	B1K
223	3101051510000	Chip resistor 0402 150PF(±5%)(50V)	1	C473	B2K
224	3101052730000	Chip resistor 0402 0.027UF K 16V	1	C474	B2K
225	3101054740000	Chip resistor 0402 0.47UF Z 6.3V	1	C475	B2K
226	3101053300000	Chip resistor 0402 33PF J 50V	1	C476	B2K
227	3101055610000	Chip resistor 0402 560PF K 50V	1	C477	B2K
228	3104071050010	Ta-capacitor 0805 1UF M 16V	1	C478	B3K
229	3104071050010	Ta-capacitor 0805 1UF M 16V	1	C479	B3K
230	3101052220010	Chip resistor 0402 2200PF K 50V	1	C480	B3K
231	3101053300000	Chip resistor 0402 33PF J 50V	1	C481	B3K
232	3104074750030	Ta-capacitor 0805 4.7UF M 10V	1	C483	B2I
233	3101051040060	Chip resistor 0402 0.1UF K 10V	1	C484	B3K
234	3101054720000	Chip resistor 0402 4700PF K 50V	1	C485	B4J
235	3101051030020	Chip resistor 0402 0.01UF K 25V	1	C486	B4K
236	3104074750030	Ta-capacitor 0805 4.7UF M 10V	1	C487	B2K
237	3101061050060	Chip resistor 0603 1UF K 10V	1	C489	B3J
238	3101051050000	Chip resistor 0402 1UF Z 6.3V	1	C490	T1H
239	3101051050000	Chip resistor 0402 1UF Z 6.3V	1	C491	B3J
240	3101051830000	Chip resistor 0402 0.018UF K 16V	1	C492	B2J
241	3101051530000	Chip resistor 0402 0.015UF K 16V	1	C493	B2J
242	3101051050000	Chip resistor 0402 1UF Z 6.3V	1	C495	T1H
243	3101051050000	Chip resistor 0402 1UF Z 6.3V	1	C496	T2D
244	3101051020010	Chip resistor 0402 1000PF K 50V	1	C497	B5K
245	3101054710010	Chip resistor 0402 470PF K 50V	1	C498	B1B

**TC-700 Part List 1**

**TC-700 VHF Part List1**

No	P/N	Description	Qty	Ref. No.	Print No.
246	3101054710010	Chip resistor 0402 470PF K 50V	1	C499	T1C
247	3101051020010	Chip resistor 0402 1000PF K 50V	1	C512	T2K
248	3101051500020	Chip resistor 0402 15PF J 50V	1	C514	T4K
249	3101052700000	Chip resistor 0402 27PF J 50V	1	C515	T3K
250	3101052700000	Chip resistor 0402 27PF J 50V	1	C516	T4K
251	3101051020010	Chip resistor 0402 1000PF K 50V	1	C517	B2A
252	3101054710010	Chip resistor 0402 470PF K 50V	1	C518	B1B
253	3104071060010	Ta-capacitor 0805 10UF M 6.3V	1	C519	T1I
254	3101061050060	Chip resistor 0603 1UF K 10V	1	C520	T1I
255	3101054710010	Chip resistor 0402 470PF K 50V	1	C521	T1I
256	3101054710010	Chip resistor 0402 470PF K 50V	1	C522	T1J
257	3101051040060	Chip resistor 0402 0.1UF K 10V	1	C523	T1J
258	3101054710010	Chip resistor 0402 470PF K 50V	1	C524	T1I
259	3101051050000	Chip resistor 0402 1UF Z 6.3V	1	C525	T4K
260	3104071060010	Ta-capacitor 0805 10UF M 6.3V	1	C526	T5J
261	3101054710010	Chip resistor 0402 470PF K 50V	1	C527	T4K
262	3101054710010	Chip resistor 0402 470PF K 50V	1	C528	T2B
263	3101054710010	Chip resistor 0402 470PF K 50V	1	C529	T2B
264	3104074750030	Ta-capacitor 0805 4.7UF M 10V	1	C530	T2B
265	3101051050000	Chip resistor 0402 1UF Z 6.3V	1	C531	T2G
266	3101051050000	Chip resistor 0402 1UF Z 6.3V	1	C532	T2H
267	3101054710010	Chip resistor 0402 470PF K 50V	1	C533	T2H
268	3101054710010	Chip resistor 0402 470PF K 50V	1	C535	T3H
269	3104071060010	Ta-capacitor 0805 10UF M 6.3V	1	C536	T3H
270	3101054710010	Chip resistor 0402 470PF K 50V	1	C537	T3H
271	3101051020010	Chip resistor 0402 1000PF K 50V	1	C538	T5J
272	3101051030020	Chip resistor 0402 0.01UF K 25V	1	C539	T3A
273	3101051030020	Chip resistor 0402 0.01UF K 25V	1	C540	T3A
274	3101051030020	Chip resistor 0402 0.01UF K 25V	1	C541	T3A
275	3101051030020	Chip resistor 0402 0.01UF K 25V	1	C542	T3A
276	3101051030020	Chip resistor 0402 0.01UF K 25V	1	C545	T3I
277	3101051020010	Chip resistor 0402 1000PF K 50V	1	C546	T3K
278	3101051020010	Chip resistor 0402 1000PF K 50V	1	C558	B4A
279	3101051050000	Chip resistor 0402 1UF Z 6.3V	1	C559	T2G
280	3101051040060	Chip resistor 0402 0.1UF K 10V	1	C601	T2E
281	3101052210010	Chip resistor 0402 220PF J 50V	1	C602	T1C
282	3101052210010	Chip resistor 0402 220PF J 50V	1	C603	T1C
283	3101051010030	Chip resistor 0402 100PF J 50V	1	C605	T2C
284	3101051010030	Chip resistor 0402 100PF J 50V	1	C607	T2D
285	3101051030020	Chip resistor 0402 0.01UF K 25V	1	C608	T1F
286	3101051040060	Chip resistor 0402 0.1UF K 10V	1	C609	T1F
287	3101054710010	Chip resistor 0402 470PF K 50V	1	C610	T1G
288	3801045030170	Ceramic filter CFWKA450KGFA—R0	1	CF202	B1I
289	3005051020010	Array resistor 0402 1K*4 J 1/16W*4	1	CP505	T2J
290	3005051020000	Array resistor 0402 1K*2 J 1/16W*2	1	CP506	T4J
291	3005051020000	Array resistor 0402 1K*2 J 1/16W*2	1	CP507	T3K
292	3005051020000	Array resistor 0402 1K*2 J 1/16W*2	1	CP509	T2I
293	3005051020000	Array resistor 0402 1K*2 J 1/16W*2	1	CP511	T2J
294	3005051020000	Array resistor 0402 1K*2 J 1/16W*2	1	CP512	T2J



**TC-700 Part List 1**

**TC-700 VHF Part List1**

No	P/N	Description	Qty	Ref. No.	Print No.
295	3005051020000	Array resistor 0402 1K*2 J 1/16W*2	1	CP514	T4J
296	3005051020000	Array resistor 0402 1K*2 J 1/16W*2	1	CP516	T4I
297	3005051020000	Array resistor 0402 1K*2 J 1/16W*2	1	CP517	T4K
298	3005051020010	Array resistor 0402 1K*4 J 1/16W*4	1	CP518	T3I
299	3005051020010	Array resistor 0402 1K*4 J 1/16W*4	1	CP519	T3I
300	3005051020000	Array resistor 0402 1K*2 J 1/16W*2	1	CP524	T4I
301	3005051020010	Array resistor 0402 1K*4 J 1/16W*4	1	CP525	T4I
302	3005051020010	Array resistor 0402 1K*4 J 1/16W*4	1	CP526	T4J
303	3303020100080	Switch diode MA2S07700L	1	D101	B3F
304	3303020100070	Switch diode MA2Z07700L	1	D102	B4C
305	3303020100080	Switch diode MA2S07700L	1	D103	B4B
306	3303020100080	Switch diode MA2S07700L	1	D104	B4B
307	3303020100080	Switch diode MA2S07700L	1	D201	B3F
308	3303030100010	Switch diode DAN222(TL)	1	D202	B1H
309	3303030100010	Switch diode DAN222(TL)	1	D203	B1H
310	3304060300040	Varactor HVC362	1	D206	B3D
311	3304060300040	Varactor HVC362	1	D207	B3C
312	3304060300040	Varactor HVC362	1	D208	B3C
313	3304060300040	Varactor HVC362	1	D209	B3B
314	3304060300040	Varactor HVC362	1	D210	B3B
315	3304060300010	Varactor HVC376BTRF-E	1	D301	B3H
316	3304060300010	Varactor HVC376BTRF-E	1	D302	B3H
317	3304060300010	Varactor HVC376BTRF-E	1	D303	B3H
318	3304060300010	Varactor HVC376BTRF-E	1	D304	B3H
319	3304040200000	Varactor BB179	1	D305	B3G
320	3303020100020	Switch diode MA2S11100L	1	D306	B5G
321	3304060300000	Varactor HVC375BTRF-E	1	D307	B5H
322	3304060300000	Varactor HVC375BTRF-E	1	D308	B5G
323	3304060300000	Varactor HVC375BTRF-E	1	D309	B5H
324	3304060300000	Varactor HVC375BTRF-E	1	D310	B5H
325	3303020100020	Switch diode MA2S11100L	1	D311	B5I
326	3303030300000	Rectifier diode RB706F(40T106)	1	D402	B4K
327	3303030300000	Rectifier diode RB706F(40T106)	1	D406	T1F
328	3303020100060	Switch diode MA3J74200L	1	D410	B4J
329	3399990000110	Diode ISR154-400	1	D501	B1B
330	3303010500190	Switch diode 1SS373(TPH3)	1	D502	T1I
331	3303010500190	Switch diode 1SS373(TPH3)	1	D503	T2H
332	3303020100020	Switch diode MA2S11100L	1	D504	T4K
333	3307110100070	LED KPT-1608SRC super bright red	1	D505	T1A
334	3307110100080	LED KPT1608-SGC super bright green	1	D506	T1A
335	4099000000050	Fuse 046602.5NR 2.5A/32V	1	F501	T2A
336	3605008005070	Operational amplifier NJM2904V	1	IC101	T4E
337	3609030005620	Dedicated IC HSMS-2827	1	IC202	B3E
338	3603002005440	IF processing IC TA31136FN(EL)	1	IC204	B2G
339	3604025004350	PLL ADF4111BRU	1	IC301	B4I
340	3605017005540	Operational amplifier TDA2822D	1	IC401	T2E
341	3605002057290	Operational amplifier TC75W51FU(TE12L)	1	IC402	T1E
342	3605002057290	Operational amplifier TC75W51FU(TE12L)	1	IC404	B2I
343	3605002057290	Operational amplifier TC75W51FU(TE12L)	1	IC405	B4K

**TC-700 Part List 1**

**TC-700 VHF Part List1**

No	P/N	Description	Qty	Ref. No.	Print No.
344	3605002057290	Operational amplifier TC75W51FU(TE12L)	1	IC407	T1J
345	3613034001060	Baseband processing IC AK2346 Two-way Radio Audio	1	IC408	B2J
346	3612031004430	Memory AT24C32AN-10SI-2.7	1	IC501	T2K
347	3608015000000	Power supply managing IC (regulator) XC6201P502PR	1	IC502	T2B
348	3608020005750	Power supply managing IC TK11250CM VOLTAGE REG	1	IC503	T1I
349	3608015000000	Power supply managing IC (voltage regulator) XC6201P	1	IC504	T3H
350	3619006005220	Low voltage detecting IC R3111N451C	1	IC505	T4K
351	3610045000010	SCM M30624FGPGP#U5C 16-BIT	1	IC506	T3J
352	4301080000020	Touch switch TC-700 emergency (SKRTLAE010)	1	K503	T4A
353	3210306180000	Multi-layer inductor 0603 18nH	1	L100	B4F
354	3210306270000	Multi-layer inductor 0603 27nH	1	L101	B3E
355	3210306820000	Multi-layer inductor 0603 82nH	1	L102	B4F
356	3210306820000	Multi-layer inductor 0603 82nH	1	L103	B4E
357	3221506601000	Chip ferrite bead 0603 600Ω±25%	1	L104	B4F
358	3213212102000	Multi-layer inductor 1008 1uH	1	L105	B3E
359	3221507221000	Chip ferrite bead 0805 220Ω±25%	1	L106	B3D
360	3210306270000	Multi-layer inductor 0603 27nH	1	L107	B4E
361	3212312222010	Multi-layer inductor 1008 2.2uH	1	L108	B4C
362	3231351680000	Air-coil inductor E2-0.35*1.6*8TR	1	L109	B4D
363	3221507600000	Chip ferrite bead 0805 60Ω±25%	1	L110	B3C
364	3231301030000	Air-coil inductor E2 0.3*1.0*3TL	1	L111	B5D
365	3231351640000	Air-coil inductor E2-0.35*1.6*4TL	1	L112	B4C
366	3231351670000	Air-coil inductor E2-0.35*1.6*7TR	1	L113	B5B
367	3231351660000	Air-coil inductor E2-0.35*1.6*6TR	1	L114	B5B
368	3210209102010	Framework inductor 1210 1uH	1	L115	T5B
369	3231351680000	Air-coil inductor E2-0.35*1.6*8TR	1	L116	B4B
370	3210306101000	Multi-layer inductor 0603 100nH	1	L117	B3G
371	3231351630000	Air-coil inductor E2-0.35*1.6*3TR	1	L118	B4C
372	3231351660000	Air-coil inductor E2-0.35*1.6*6TR	1	L119	B4B
373	3210305390000	Multi-layer inductor 0402 39nH	1	L202	B2F
374	3210306150000	Multi-layer inductor 0603 15nH	1	L203	B2D
375	3214307151000	Inductor 0805 150nH(Q)	1	L204	B1E
376	3214307151000	Inductor 0805 150nH(Q)	1	L205	B2E
377	3231301250000	Air-coil inductor E2-0.30*1.2*5TL	1	L206	B3D
378	3231301250000	Air-coil inductor E2-0.30*1.2*5TL	1	L207	B3D
379	3210306150000	Multi-layer inductor 0603 15nH	1	L208	B2C
380	3215107680000	Framework inductor 0805 68nH	1	L209	B3C
381	3231321050000	Air-coil inductor E2 0.32*1.0*5TR	1	L211	B3B
382	3231301250000	Air-coil inductor E2-0.30*1.2*5TL	1	L212	B3B
383	3210306270000	Multi-layer inductor 0603 27nH	1	L301	B4I
384	3213306682000	Multi-layer inductor 0603 6.8uH	1	L302	B3H
385	3210108390000	Multi-layer inductor 1206 39nH	1	L304	B3G
386	3210306101000	Multi-layer inductor 0603 100nH	1	L305	B4G
387	3210306270000	Multi-layer inductor 0603 27nH	1	L306	B4G
388	3221506601000	Chip ferrite bead 0603 600Ω±25%	1	L307	B4G
389	3213306682000	Multi-layer inductor 0603 6.8uH	1	L308	B5G
390	3213306682000	Multi-layer inductor 0603 6.8uH	1	L309	B5H
391	3210108330000	Framework inductor 1206 33nH	1	L310	B4H
392	3221506601000	Chip ferrite bead 0603 600Ω±25%	1	L311	B3G

**TC-700 Part List 1**

**TC-700 VHF Part List1**

No	P/N	Description	Qty	Ref. No.	Print No.
393	3213306682000	Multi-layer inductor 0603 6.8uH	1	L313	B4G
394	3221506601000	Chip ferrite bead 0603 600Ω±25%	1	L314	B5I
395	3213212561000	Multi-layer inductor 1008 0.56uH	1	L315	B3I
396	3221506601000	Chip ferrite bead 0603 600Ω±25%	1	L316	B4J
397	3210406331000	Multi-layer inductor 0603 330nH	1	L317	B2I
398	3210406331000	Multi-layer inductor 0603 330nH	1	L318	B2G
399	3210406331000	Multi-layer inductor 0603 330nH	1	L319	B2G
400	3213306682000	Multi-layer inductor 0603 6.8uH	1	L320	B3H
401	3213306682000	Multi-layer inductor 0603 6.8uH	1	L321	B3G
402	3210306680000	Multi-layer inductor 0603 68nH	1	L322	B4I
403	3221506601000	Chip ferrite bead 0603 600Ω±25%	1	L401	T1D
404	3221507221000	Chip ferrite bead 0805 220Ω±25%	1	L501	B2B
405	3210306221000	Multi-layer inductor 0603 220nH	1	L502	T4J
406	3210306221000	Multi-layer inductor 0603 220nH	1	L503	T3I
407	3210306221000	Multi-layer inductor 0603 220nH	1	L504	T4K
408	3401002000990	Transistor 2SC5108-Y(TE85L)	1	Q101	B4F
409	3406001000090	Transistor 2SC4988FRTR	1	Q102	B4E
410	3502010000390	FET 2SK3475(TE12L.F)VHF and UHF band Amplifier	1	Q103	B3E
411	3502010000490	FET 2SK3476(TE12L.Q)	1	Q104	B4D
412	3403008000030	Transistor DTC114TE	1	Q105	B5F
413	3503020000030	FET 2SK1824-T1	1	Q107	T4F
414	3403008000010	Transistor DTC114EE(TL)	1	Q108	T4F
415	3403008000010	Transistor DTC114EE(TL)	1	Q109	T4F
416	3403007000070	Transistor DTA144EE	1	Q110	T4F
417	3401002000990	Transistor 2SC5108-Y(TE85L)	1	Q111	B3G
418	3403007000070	Transistor DTA144EE	1	Q201	B1F
419	3401002000990	Transistor 2SC5108-Y(TE85L)	1	Q204	B1G
420	3403007000000	Transistor DTA114EE(TL)	1	Q205	T1H
421	3408002000000	Transistor 2SC3356-R	1	Q206	B1E
422	3418001000010	Transistor AT-41511	1	Q207	B2B
423	3401002000990	Transistor 2SC5108-Y(TE85L)	1	Q301	B4I
424	3499000000140	Transistor 2SK508-K52-T1B-A	1	Q302	B4H
425	3503010000010	FET 2SJ243-T1	1	Q303	B4G
426	3401002000990	Transistor 2SC5108-Y(TE85L)	1	Q304	B4G
427	3499000000150	(dedicated) Transistor UMC4N(TR)	1	Q305	B4G
428	3403003000060	Transistor 2SC4617TLS	1	Q306	B5G
429	3499000000140	Transistor 2SK508-K52-T1B-A	1	Q307	B4H
430	3401002000990	Transistor 2SC5108-Y(TE85L)	1	Q308	B2I
431	3401002000290	Transistor 2SC4116(GR)	1	Q401	B3K
432	3499000000180	Transistor UFMMT717	1	Q403	T2F
433	3503020000030	FET 2SK1824-T1	1	Q404	T2F
434	3403008000070	Transistor DTC144EE(TL)	1	Q405	T3F
435	3403007000000	Transistor DTA114EE(TL)	1	Q406	T1H
436	3403008000010	Transistor DTC114EE(TL)	1	Q407	T1H
437	3503020000030	FET 2SK1824-T1	1	Q409	B3J
438	3403008000070	Transistor DTC144EE(TL)	1	Q501	T4K
439	3410001000020	Transistor 2SA1745	1	Q502	T2G
440	3503010000010	FET 2SJ243-T1	1	Q503	T1I
441	3503010000010	FET 2SJ243-T1	1	Q504	T1I

**TC-700 Part List 1**

**TC-700 VHF Part List1**

No	P/N	Description	Qty	Ref. No.	Print No.
442	3403008000070	Transistor DTC144EE(TL)	1	Q505	T2I
443	3403008000010	Transistor DTC114EE(TL)	1	Q506	T1B
444	3403008000010	Transistor DTC114EE(TL)	1	Q507	T1B
445	3001053320000	Chip resistor 0402 3.3KΩ J 1/16W	1	R101	B3F
446	3001054730000	Chip resistor 0402 47KΩ J 1/16W	1	R102	B4F
447	3001053310010	Chip resistor 0402 330Ω J 1/16W	1	R103	B4F
448	3001052200000	Chip resistor 0402 22Ω J 1/16W	1	R104	B4F
449	3001056810000	Chip resistor 0402 680Ω J 1/16W	1	R105	B4F
450	3001053920010	Chip resistor 0402 3.9KΩ J 1/16W	1	R106	B4F
451	3001052200000	Chip resistor 0402 22Ω J 1/16W	1	R107	B4E
452	3001053310010	Chip resistor 0402 330Ω J 1/16W	1	R108	B4E
453	3001061800000	Chip resistor 0603 18Ω J 1/10W	1	R109	B3F
454	3001054700000	Chip resistor 0402 47Ω J 1/16W	1	R111	B4E
455	3001051030000	Chip resistor 0402 10KΩ J 1/16W	1	R112	B4E
456	3001054730000	Chip resistor 0402 47KΩ J 1/16W	1	R113	B4E
457	3001070000000	Chip resistor 0805 0Ω J 1/8W	1	R114	B4E
458	3001064700000	Chip resistor 0603 47Ω J 1/10W	1	R115	B5E
459	3001063320000	Chip resistor 0603 3.3KΩ J 1/10W	1	R116	B5E
460	3001055620000	Chip resistor 0402 5.6KΩ J 1/16W	1	R117	B5E
461	3001054720000	Chip resistor 0402 4.7KΩ J 1/16W	1	R118	B3G
462	3001062710000	Chip resistor 0603 270Ω J 1/10W	1	R121	B3C
463	3001062710000	Chip resistor 0603 270Ω J 1/10W	1	R122	B3C
464	3001053910000	Chip resistor 0402 390Ω J 1/16W	1	R123	B5E
465	3001053320000	Chip resistor 0402 3.3KΩ J 1/16W	1	R124	B5F
466	3099080398000	Chip resistor 1206 0.39Ω J 1/4W	1	R125	T4B
467	3099080398000	Chip resistor 1206 0.39Ω J 1/4W	1	R126	T4B
468	3099080398000	Chip resistor 1206 0.39Ω J 1/4W	1	R127	T4B
469	3001051540000	Chip resistor 0402 150KΩ F 1/16W	1	R134	T4E
470	3001051540000	Chip resistor 0402 150KΩ F 1/16W	1	R135	T4E
471	3001051540000	Chip resistor 0402 150KΩ F 1/16W	1	R136	T5E
472	3001051540000	Chip resistor 0402 150KΩ F 1/16W	1	R137	T5E
473	3001051540000	Chip resistor 0402 150KΩ F 1/16W	1	R138	T5F
474	3001051540000	Chip resistor 0402 150KΩ F 1/16W	1	R139	T4F
475	3001051030000	Chip resistor 0402 10KΩ J 1/16W	1	R141	T4E
476	3001051050020	Chip resistor 0402 1MΩ J 1/16W	1	R142	T4E
477	3001061840000	Chip resistor 0603 180KΩ J 1/10W	1	R143	T4F
478	3001052220000	Chip resistor 0402 2.2KΩ J 1/16W	1	R144	T4F
479	3001054730000	Chip resistor 0402 47KΩ J 1/16W	1	R145	T5F
480	3001051040010	Chip resistor 0402 100KΩ J 1/16W	1	R146	T4F
481	3001050000000	Chip resistor 0402 0Ω J 1/16W	1	R147	T5F
482	3001053320000	Chip resistor 0402 3.3KΩ J 1/16W	1	R148	B3G
483	3001055620000	Chip resistor 0402 5.6KΩ J 1/16W	1	R149	B3G
484	3001052710010	Chip resistor 0402 270Ω J 1/16W	1	R150	B3G
485	3001053320000	Chip resistor 0402 3.3KΩ J 1/16W	1	R151	B3G
486	3001051000000	Chip resistor 0402 10Ω J 1/16W	1	R152	B3G
487	3001051030000	Chip resistor 0402 10KΩ J 1/16W	1	R201	B2F
488	3001051520000	Chip resistor 0402 1.5KΩ J 1/16W	1	R203	B1G
489	3001052230010	Chip resistor 0402 22KΩ J 1/16W	1	R204	B1H
490	3001054720000	Chip resistor 0402 4.7KΩ J 1/16W	1	R205	B1H

**TC-700 Part List 1**

**TC-700 VHF Part List1**

No	P/N	Description	Qty	Ref. No.	Print No.
491	3001052230010	Chip resistor 0402 22KΩ J 1/16W	1	R206	B1H
492	3001052230010	Chip resistor 0402 22KΩ J 1/16W	1	R207	B1H
493	3001052230010	Chip resistor 0402 22KΩ J 1/16W	1	R208	B1H
494	3001054720000	Chip resistor 0402 4.7KΩ J 1/16W	1	R209	B1H
495	3001052720000	Chip resistor 0402 2.7KΩ J 1/16W	1	R211	B2G
496	3001051040010	Chip resistor 0402 100KΩ J 1/16W	1	R212	B2G
497	3001054720000	Chip resistor 0402 4.7KΩ J 1/16W	1	R213	B2G
498	3001051000000	Chip resistor 0402 10Ω J 1/16W	1	R214	B2G
499	3001054730000	Chip resistor 0402 47KΩ J 1/16W	1	R215	T1H
500	3001053320000	Chip resistor 0402 3.3KΩ J 1/16W	1	R216	T1G
501	3001051820000	Chip resistor 0402 1.8KΩ J 1/16W	1	R217	B1F
502	3001051040010	Chip resistor 0402 100KΩ J 1/16W	1	R218	T1H
503	3001052720000	Chip resistor 0402 2.7KΩ J 1/16W	1	R219	B1G
504	3001056840000	Chip resistor 0402 680KΩ J 1/16W	1	R220	B1G
505	3101061030010	Chip resistor 0603 0.01UF K 25V	1	R221	T1G
506	3001051010000	Chip resistor 0402 100Ω J 1/16W	1	R222	B1G
507	3001051010000	Chip resistor 0402 100Ω J 1/16W	1	R223	B1E
508	3001052210000	Chip resistor 0402 220Ω J 1/16W	1	R225	B1E
509	3001052700000	Chip resistor 0402 27Ω J 1/16W	1	R226	B1E
510	3001056820000	Chip resistor 0402 6.8KΩ J 1/16W	1	R227	B1E
511	3001051020010	Chip resistor 0402 1KΩ J 1/16W	1	R228	B1E
512	3001052220000	Chip resistor 0402 2.2KΩ J 1/16W	1	R229	B1E
513	3001052710010	Chip resistor 0402 270Ω J 1/16W	1	R230	B1E
514	3001051800000	Chip resistor 0402 18Ω J 1/16W	1	R231	B2E
515	3001052710010	Chip resistor 0402 270Ω J 1/16W	1	R232	B2E
516	3001051040010	Chip resistor 0402 100KΩ J 1/16W	1	R234	B3D
517	3001051040010	Chip resistor 0402 100KΩ J 1/16W	1	R235	B3C
518	3001052790000	Chip resistor 0402 2.7Ω J 1/16W	1	R236	B2B
519	3001054320000	Chip resistor 0402 4.3KΩ J 1/16W	1	R237	B3C
520	3001051230000	Chip resistor 0402 12KΩ J 1/16W	1	R238	B3B
521	3001056820000	Chip resistor 0402 6.8KΩ J 1/16W	1	R239	B2B
522	3001051040010	Chip resistor 0402 100KΩ J 1/16W	1	R240	B3B
523	3001051040010	Chip resistor 0402 100KΩ J 1/16W	1	R241	B3D
524	3001051040010	Chip resistor 0402 100KΩ J 1/16W	1	R242	B3B
525	3001055110000	Chip resistor 0402 510Ω J 1/16W	1	R251	B3C
526	3001056830000	Chip resistor 0402 68KΩ J 1/16W	1	R252	B2G
527	3001051040010	Chip resistor 0402 100KΩ J 1/16W	1	R253	B3C
528	3001050000000	Chip resistor 0402 0Ω J 1/16W	1	R254	T1G
529	3001051010000	Chip resistor 0402 100Ω J 1/16W	1	R301	B3I
530	3001052240000	Chip resistor 0402 220KΩ J 1/16W	1	R302	B3I
531	3001050000000	Chip resistor 0402 0Ω J 1/16W	1	R303	B3G
532	3001053910000	Chip resistor 0402 390Ω J 1/16W	1	R304	B4H
533	3001051010000	Chip resistor 0402 100Ω J 1/16W	1	R305	B4G
534	3001051540020	Chip resistor 0402 150KΩ J 1/16W	1	R307	B4G
535	3001051010000	Chip resistor 0402 100Ω J 1/16W	1	R308	B4G
536	3001052200000	Chip resistor 0402 22Ω J 1/16W	1	R309	B4G
537	3001051040010	Chip resistor 0402 100KΩ J 1/16W	1	R310	B4G
538	3001051020010	Chip resistor 0402 1KΩ J 1/16W	1	R311	B4G
539	3001054720000	Chip resistor 0402 4.7KΩ J 1/16W	1	R312	B5G

**TC-700 Part List 1**

**TC-700 VHF Part List1**

No	P/N	Description	Qty	Ref. No.	Print No.
540	3001054720000	Chip resistor 0402 4.7KΩ J 1/16W	1	R313	B3G
541	3001053910000	Chip resistor 0402 390Ω J 1/16W	1	R314	B4G
542	3001050000000	Chip resistor 0402 0Ω J 1/16W	1	R315	B4I
543	3001052220000	Chip resistor 0402 2.2KΩ J 1/16W	1	R316	B4I
544	3001051020010	Chip resistor 0402 1KΩ J 1/16W	1	R317	B4I
545	3001050000000	Chip resistor 0402 0Ω J 1/16W	1	R318	B4I
546	3001050000000	Chip resistor 0402 0Ω J 1/16W	1	R319	B4I
547	3001054720000	Chip resistor 0402 4.7KΩ J 1/16W	1	R320	B4I
548	3001051030000	Chip resistor 0402 10KΩ J 1/16W	1	R321	B4J
549	3001054740000	Chip resistor 0402 470KΩ J 1/16W	1	R322	B3G
550	3001051010000	Chip resistor 0402 100Ω J 1/16W	1	R335	B3I
551	3001051030000	Chip resistor 0402 10KΩ J 1/16W	1	R336	B5J
552	3001051840000	Chip resistor 0402 180KΩ J 1/16W	1	R337	B3I
553	3001059130000	Chip resistor 0402 91KΩ F 1/16W	1	R338	B3I
554	3001051240000	Chip resistor 0402 120KΩ J 1/16W	1	R339	B3I
555	3001051000000	Chip resistor 0402 10Ω J 1/16W	1	R344	B2I
556	3001052240000	Chip resistor 0402 220KΩ J 1/16W	1	R345	B2I
557	3001051010000	Chip resistor 0402 100Ω J 1/16W	1	R346	B2I
558	3001051030000	Chip resistor 0402 10KΩ J 1/16W	1	R347	B4I
559	3001051000000	Chip resistor 0402 10Ω J 1/16W	1	R348	B4J
560	3001051000000	Chip resistor 0402 10Ω J 1/16W	1	R349	B5I
561	3001051000000	Chip resistor 0402 10Ω J 1/16W	1	R350	B5I
562	3001051540020	Chip resistor 0402 150KΩ J 1/16W	1	R351	B5I
563	3001051020010	Chip resistor 0402 1KΩ J 1/16W	1	R352	B5I
564	3001051040010	Chip resistor 0402 100KΩ J 1/16W	1	R400	T1G
565	3001052730000	Chip resistor 0402 27KΩ J 1/16W	1	R401	T1E
566	3001050000000	Chip resistor 0402 0Ω J 1/16W	1	R402	T1F
567	3001051040010	Chip resistor 0402 100KΩ J 1/16W	1	R403	T1F
568	3001050000000	Chip resistor 0402 0Ω J 1/16W	1	R404	B3K
569	3001051020010	Chip resistor 0402 1KΩ J 1/16W	1	R405	B3K
570	3001051030000	Chip resistor 0402 10KΩ J 1/16W	1	R407	B3K
571	3001054740000	Chip resistor 0402 470KΩ J 1/16W	1	R408	T1E
572	3001051530000	Chip resistor 0402 15KΩ J 1/16W	1	R409	B3J
573	3001055620000	Chip resistor 0402 5.6KΩ J 1/16W	1	R410	T1E
574	3001054790000	Chip resistor 0402 4.7Ω J 1/16W	1	R411	T1E
575	3001054790000	Chip resistor 0402 4.7Ω J 1/16W	1	R412	T2E
576	3001054730000	Chip resistor 0402 47KΩ J 1/16W	1	R414	T2F
577	3001054710000	Chip resistor 0402 470Ω J 1/16W	1	R415	T2B
578	3001051820000	Chip resistor 0402 1.8KΩ J 1/16W	1	R416	T2B
579	3001051020010	Chip resistor 0402 1KΩ J 1/16W	1	R417	T3F
580	3001051030000	Chip resistor 0402 10KΩ J 1/16W	1	R418	T2F
581	3001053330010	Chip resistor 0402 33KΩ J 1/16W	1	R419	B2I
582	3001052220000	Chip resistor 0402 2.2KΩ J 1/16W	1	R420	T2F
583	3001051830000	Chip resistor 0402 18KΩ J 1/16W	1	R421	B1I
584	3001051830000	Chip resistor 0402 18KΩ J 1/16W	1	R422	B1I
585	3001050000000	Chip resistor 0402 0Ω J 1/16W	1	R424	B2I
586	3001051240000	Chip resistor 0402 120KΩ J 1/16W	1	R425	T1E
587	3001051030000	Chip resistor 0402 10KΩ J 1/16W	1	R426	B3K
588	3001056820000	Chip resistor 0402 6.8KΩ J 1/16W	1	R427	B3J

**TC-700 Part List 1**

**TC-700 VHF Part List1**

No	P/N	Description	Qty	Ref. No.	Print No.
589	3001051040010	Chip resistor 0402 100KΩ J 1/16W	1	R428	B2J
590	3001051040010	Chip resistor 0402 100KΩ J 1/16W	1	R429	T1J
591	3001051040010	Chip resistor 0402 100KΩ J 1/16W	1	R430	T1J
592	3001052230010	Chip resistor 0402 22KΩ J 1/16W	1	R431	T1J
593	3001051030000	Chip resistor 0402 10KΩ J 1/16W	1	R432	T1J
594	3001052230010	Chip resistor 0402 22KΩ J 1/16W	1	R433	T1J
595	3001051830000	Chip resistor 0402 18KΩ J 1/16W	1	R438	T1E
596	3001052240000	Chip resistor 0402 220KΩ J 1/16W	1	R439	B2I
597	3001051030000	Chip resistor 0402 10KΩ J 1/16W	1	R440	T1E
598	3001058230000	Chip resistor 0402 82KΩ J 1/16W	1	R441	B2I
599	3001051030000	Chip resistor 0402 10KΩ J 1/16W	1	R442	B3K
600	3001054730000	Chip resistor 0402 47KΩ J 1/16W	1	R443	B2I
601	3001050000000	Chip resistor 0402 0Ω J 1/16W	1	R444	B2I
602	3001052230010	Chip resistor 0402 22KΩ J 1/16W	1	R445	B4J
603	3001051840000	Chip resistor 0402 180KΩ J 1/16W	1	R446	B4J
604	3001051840000	Chip resistor 0402 180KΩ J 1/16W	1	R447	B4J
605	3001051040010	Chip resistor 0402 100KΩ J 1/16W	1	R448	B4K
606	3001053940000	Chip resistor 0402 390KΩ J 1/16W	1	R449	B4K
607	3001058230000	Chip resistor 0402 82KΩ J 1/16W	1	R450	B4K
608	3001051830000	Chip resistor 0402 18KΩ J 1/16W	1	R451	B4K
609	3001051830000	Chip resistor 0402 18KΩ J 1/16W	1	R452	B4K
610	3001050000000	Chip resistor 0402 0Ω J 1/16W	1	R453	B3K
611	3001051010000	Chip resistor 0402 100Ω J 1/16W	1	R454	T1D
612	3001050000000	Chip resistor 0402 0Ω J 1/16W	1	R455	T2D
613	3001051000000	Chip resistor 0402 10Ω J 1/16W	1	R456	T2E
614	3001050000000	Chip resistor 0402 0Ω J 1/16W	1	R457	B3K
615	3001052230010	Chip resistor 0402 22KΩ J 1/16W	1	R458	B3J
616	3001054720000	Chip resistor 0402 4.7KΩ J 1/16W	1	R459	T1J
617	3001052230010	Chip resistor 0402 22KΩ J 1/16W	1	R460	B3K
618	3001051030000	Chip resistor 0402 10KΩ J 1/16W	1	R461	T1K
619	3001051050020	Chip resistor 0402 1MΩ J 1/16W	1	R462	T1K
620	3001051030000	Chip resistor 0402 10KΩ J 1/16W	1	R463	T1J
621	3001051540000	Chip resistor 0402 150KΩ F 1/16W	1	R464	T1K
622	3001051540000	Chip resistor 0402 150KΩ F 1/16W	1	R465	T1K
623	3001051020010	Chip resistor 0402 1KΩ J 1/16W	1	R466	T1J
624	3001051030000	Chip resistor 0402 10KΩ J 1/16W	1	R467	T1J
625	3001051020010	Chip resistor 0402 1KΩ J 1/16W	1	R468	T1C
626	3001051030000	Chip resistor 0402 10KΩ J 1/16W	1	R469	T1H
627	3001056830000	Chip resistor 0402 68KΩ J 1/16W	1	R470	B2K
628	3001051030000	Chip resistor 0402 10KΩ J 1/16W	1	R471	B2K
629	3001055630000	Chip resistor 0402 56KΩ J 1/16W	1	R472	B2K
630	3001055630000	Chip resistor 0402 56KΩ J 1/16W	1	R473	B2K
631	3001051050020	Chip resistor 0402 1MΩ J 1/16W	1	R474	B2J
632	3001051040010	Chip resistor 0402 100KΩ J 1/16W	1	R475	B2K
633	3001051030000	Chip resistor 0402 10KΩ J 1/16W	1	R476	B2K
634	3001052240000	Chip resistor 0402 220KΩ J 1/16W	1	R477	B2K
635	3001053330010	Chip resistor 0402 33KΩ J 1/16W	1	R478	B2K
636	3001055130010	Chip resistor 0402 51KΩ J 1/16W	1	R479	B2K
637	3001051030000	Chip resistor 0402 10KΩ J 1/16W	1	R480	B3K

**TC-700 Part List 1**

**TC-700 VHF Part List1**

No	P/N	Description	Qty	Ref. No.	Print No.
638	3001053340000	Chip resistor 0402 330KΩ J 1/16W	1	R481	B3K
639	3001051030000	Chip resistor 0402 10KΩ J 1/16W	1	R482	B3J
640	3001051230000	Chip resistor 0402 12KΩ J 1/16W	1	R483	B3J
641	3001052230010	Chip resistor 0402 22KΩ J 1/16W	1	R484	B3I
642	3001051030000	Chip resistor 0402 10KΩ J 1/16W	1	R485	B3J
643	3001051040010	Chip resistor 0402 100KΩ J 1/16W	1	R486	T1H
644	3001051030000	Chip resistor 0402 10KΩ J 1/16W	1	R487	B4J
645	3001054730000	Chip resistor 0402 47KΩ J 1/16W	1	R488	B4J
646	3001051030000	Chip resistor 0402 10KΩ J 1/16W	1	R489	B4J
647	3001054720000	Chip resistor 0402 4.7KΩ J 1/16W	1	R490	B4K
648	3001051840000	Chip resistor 0402 180KΩ J 1/16W	1	R492	B3J
649	3001051040010	Chip resistor 0402 100KΩ J 1/16W	1	R493	B3J
650	3001052230010	Chip resistor 0402 22KΩ J 1/16W	1	R494	B2J
651	3001050000000	Chip resistor 0402 0Ω J 1/16W	1	R495	B3J
652	3001054720000	Chip resistor 0402 4.7KΩ J 1/16W	1	R496	T1H
653	3001050000000	Chip resistor 0402 0Ω J 1/16W	1	R497	T1H
654	3001051530000	Chip resistor 0402 15KΩ J 1/16W	1	R498	B2J
655	3001052730000	Chip resistor 0402 27KΩ J 1/16W	1	R499	T1E
656	3001054730000	Chip resistor 0402 47KΩ J 1/16W	1	R502	T2K
657	3001050000000	Chip resistor 0402 0Ω J 1/16W	1	R504	T5I
658	3001054730000	Chip resistor 0402 47KΩ J 1/16W	1	R506	T5J
659	3001054730000	Chip resistor 0402 47KΩ J 1/16W	1	R507	T2J
660	3001051030000	Chip resistor 0402 10KΩ J 1/16W	1	R508	T2J
661	3001050000000	Chip resistor 0402 0Ω J 1/16W	1	R510	T3K
662	3001051020010	Chip resistor 0402 1KΩ J 1/16W	1	R512	T4I
663	3001054730000	Chip resistor 0402 47KΩ J 1/16W	1	R515	T1I
664	3001051040010	Chip resistor 0402 100KΩ J 1/16W	1	R516	T4K
665	3001051030000	Chip resistor 0402 10KΩ J 1/16W	1	R517	T4K
666	3001050000000	Chip resistor 0402 0Ω J 1/16W	1	R519	T1I
667	3001054720000	Chip resistor 0402 4.7KΩ J 1/16W	1	R520	T2G
668	3001052240000	Chip resistor 0402 220KΩ J 1/16W	1	R521	T2H
669	3001051020010	Chip resistor 0402 1KΩ J 1/16W	1	R522	T2H
670	3001053340000	Chip resistor 0402 330KΩ J 1/16W	1	R523	T2H
671	3001054730000	Chip resistor 0402 47KΩ J 1/16W	1	R525	T3H
672	3001054730000	Chip resistor 0402 47KΩ J 1/16W	1	R526	T4H
673	3001054730000	Chip resistor 0402 47KΩ J 1/16W	1	R527	T4H
674	3001054730000	Chip resistor 0402 47KΩ J 1/16W	1	R528	T3H
675	3001052210000	Chip resistor 0402 220Ω J 1/16W	1	R530	T1A
676	3001051810010	Chip resistor 0402 180Ω J 1/16W	1	R531	T1A
677	3001051020010	Chip resistor 0402 1KΩ J 1/16W	1	R532	T3I
678	3001051020010	Chip resistor 0402 1KΩ J 1/16W	1	R533	T3I
679	3001051020010	Chip resistor 0402 1KΩ J 1/16W	1	R534	T3I
680	3001054730000	Chip resistor 0402 47KΩ J 1/16W	1	R535	T5J
681	3001054730000	Chip resistor 0402 47KΩ J 1/16W	1	R536	T5J
682	3001054730000	Chip resistor 0402 47KΩ J 1/16W	1	R538	T5J
683	3001054730000	Chip resistor 0402 47KΩ J 1/16W	1	R539	T4H
684	3001052240000	Chip resistor 0402 220KΩ J 1/16W	1	R548	B4A
685	3001054730000	Chip resistor 0402 47KΩ J 1/16W	1	R549	T2G
686	3001051020010	Chip resistor 0402 1KΩ J 1/16W	1	R550	T2J



**TC-700 Part List 1**

**TC-700 VHF Part List1**

No	P/N	Description	Qty	Ref. No.	Print No.
687	3001051020010	Chip resistor 0402 1KΩ J 1/16W	1	R551	T4J
688	3001051020010	Chip resistor 0402 1KΩ J 1/16W	1	R553	T2I
689	3001051020010	Chip resistor 0402 1KΩ J 1/16W	1	R555	T4J
690	3001054730000	Chip resistor 0402 47KΩ J 1/16W	1	R556	T2I
691	3001051040010	Chip resistor 0402 100KΩ J 1/16W	1	R557	T2I
692	3001054730000	Chip resistor 0402 47KΩ J 1/16W	1	R558	T3K
693	3001051040010	Chip resistor 0402 100KΩ J 1/16W	1	R559	T4K
694	3001051020010	Chip resistor 0402 1KΩ J 1/16W	1	R560	T2I
695	3001054730000	Chip resistor 0402 47KΩ J 1/16W	1	R561	T3K
696	3001051020010	Chip resistor 0402 1KΩ J 1/16W	1	R563	T4I
697	3001051020010	Chip resistor 0402 1KΩ J 1/16W	1	R565	T3K
698	3001051020010	Chip resistor 0402 1KΩ J 1/16W	1	R566	T3K
699	3001050000000	Chip resistor 0402 0Ω J 1/16W	1	R590	B3K
700	3001058220000	Chip resistor 0402 8.2KΩ J 1/16W	1	R601	T1G
701	3001051020010	Chip resistor 0402 1KΩ J 1/16W	1	R603	T2F
702	3001051010000	Chip resistor 0402 100Ω J 1/16W	1	R604	T2F
703	3001051010000	Chip resistor 0402 100Ω J 1/16W	1	R605	T1A
704	3001051000000	Chip resistor 0402 10Ω J 1/16W	1	R606	T2A
705	3001051020010	Chip resistor 0402 1KΩ J 1/16W	1	R607	T2F
706	3001050000000	Chip resistor 0402 0Ω J 1/16W	1	R608	T1G
707	3001050000000	Chip resistor 0402 0Ω J 1/16W	1	R609	T1G
708	3244599189000	Transmission coil 4BLH(020984189)	1	T201	B3E
709	3244599189000	Transmission coil 4BLH(020984189)	1	T202	B2E
710	3102992000040	Trimmer capacitor 3.2*2.5*1.25mm 10P 55V	1	TC301	B3H
711	3102992000040	Trimmer capacitor 3.2*2.5*1.25mm 10P 55V	1	TC302	B4H
712	3003994730000	Thermistor 0603 47KΩ J	1	TH101	B5D
713	3003992220000	Thermistor 0603 2.2KΩ J	1	TH301	B3I
714	3002996830000	Trimmer resistor 68KΩ	1	VR1	T2I
715	3701016850010	TXCO 16.8MHz 5V	1	X301	B3I
716	3702368630020	Crystal 3.6864MHz	1	X402	B1J
717	3701098340010	Crystal 9.8304MHz	1	X501	T3K
718	3802499540070	Crystal filter 49.95MHz 15KHz	1	XF203	B1F
719	3399990000080	Zener diode EDZ6.8(TE61)	1	ZD101	T4F
720	3399990000080	Zener diode EDZ6.8(TE61)	1	ZD401	T1C
721	3399990000080	Zener diode EDZ6.8(TE61)	1	ZD402	T1C
722	3399990000080	Zener diode EDZ6.8(TE61)	1	ZD404	T2C
723	3399990000080	Zener diode EDZ6.8(TE61)	1	ZD405	T1C
724	3399990000080	Zener diode EDZ6.8(TE61)	1	ZD407	T2D
725	4100700100100	TC-700V RF PCB FR4 1.2T/6L/4P 01	1		

**TC-700 Part List 1**

**TC-700 U(2) Part List1**

No	P/N	Part Description	Qty	Ref. No.	Print No.
1	3101052200010	Chip capacitor 0402 22PF J 50V	1	C100	B3G
2	3101054710010	Chip capacitor 0402 470PF K 50V	1	C101	B3F
3	3101054710010	Chip capacitor 0402 470PF K 50V	1	C104	B4F
4	3101050700010	Chip capacitor 0402 7PF B 50V	1	C105*	B4F
5	3101054710010	Chip capacitor 0402 470PF K 50V	1	C106	B4E
6	3101054710010	Chip capacitor 0402 470PF K 50V	1	C107	B4E
7	3101054710010	Chip capacitor 0402 470PF K 50V	1	C108	B4F
8	3101051040060	Chip capacitor 0402 0.1UF K 16V	1	C109	B3F
9	3101060600010	Chip capacitor 0603 6PF B 50V	1	C110*	B4F
10	3101064710000	Chip capacitor 0603 470PF K 50V	1	C111	B3E
11	3101051040060	Chip capacitor 0402 0.1UF K 16V	1	C112	B4E
12	3101054710010	Chip capacitor 0402 470PF K 50V	1	C113	B4E
13	3101051020010	Chip capacitor 0402 1000PF K 50V	1	C114	B4E
14	3101054710010	Chip capacitor 0402 470PF K 50V	1	C115	B3D
15	3101061020000	Chip capacitor 0603 1000PF K 50V	1	C117	B4E
16	3101051020010	Chip capacitor 0402 1000PF K 50V	1	C118	B5E
17	3101054710010	Chip capacitor 0402 470PF K 50V	1	C120	B4D
18	3101051030020	Chip capacitor 0402 0.01UF K 25V	1	C121	B4D
19	3101051040060	Chip capacitor 0402 0.1UF K 16V	1	C122	B4C
20	3101061050060	Chip capacitor 0603 1UF K 10V	1	C123	B3C
21	3101054710010	Chip capacitor 0402 470PF K 50V	1	C124	B3C
22	3101062000000	Chip capacitor 0603 20PF J 50V	1	C125*	B5D
23	3101062000000	Chip capacitor 0603 20PF J 50V	1	C126*	B5C
24	3101062490000	Chip capacitor 0603 2.4PF B 50V	1	C127*	B4C
25	3101050600010	Chip capacitor 0402 6PF B 50V	1	C129*	B5C
26	3101062490000	Chip capacitor 0603 2.4PF B 50V	1	C130*	B4C
27	3101061010010	Chip capacitor 0603 100PF J 50V	1	C131	B4C
28	3101054710010	Chip capacitor 0402 470PF K 50V	1	C132	T4E
29	3101054710010	Chip capacitor 0402 470PF K 50V	1	C133	B4C
30	3101060500010	Chip capacitor 0603 5PF B 50V	1	C134*	B4B
31	3101064710000	Chip capacitor 0603 470PF K 50V	1	C135	B4B
32	3101060100010	Chip capacitor 0603 1PF B 50V	1	C136*	B4B
33	3101060100010	Chip capacitor 0603 1PF B 50V	1	C137	B4B
34	3101060500010	Chip capacitor 0603 5PF B 50V	1	C138*	B4B
35	3101061590010	Chip capacitor 0603 1.5PF B 50V	1	C139	B4B
36	3101060300010	Chip capacitor 0603 3PF B 50V	1	C140*	B4B
37	3101060100010	Chip capacitor 0603 1PF B 50V	1	C141	B4B
38	3101061590010	Chip capacitor 0603 1.5PF B 50V	1	C142*	B4B
39	3101050400010	Chip capacitor 0402 4PF B 50V	1	C144	B4B
40	3101054710010	Chip capacitor 0402 470PF K 50V	1	C145	B5F
41	3101061050060	Chip capacitor 0603 1UF K 10V	1	C146	T3B
42	3101051030020	Chip capacitor 0402 0.01UF K 25V	1	C147	B3D
43	3101054710010	Chip capacitor 0402 470PF K 50V	1	C148	B3D
44	3101054710010	Chip capacitor 0402 470PF K 50V	1	C149	T3B
45	3104074750030	Ta-capacitor0805 4.7UF M 10V	1	C150	T4F
46	3101051010030	Chip capacitor 0402 100PF J 50V	1	C152	T5E
47	3101054710010	Chip capacitor 0402 470PF K 50V	1	C153	T4F
48	3101054710010	Chip capacitor 0402 470PF K 50V	1	C154	T4E
49	3101054710010	Chip capacitor 0402 470PF K 50V	1	C155	B3G
50	3101054710010	Chip capacitor 0402 470PF K 50V	1	C156	B3G

**TC-700 Part List 1**

**TC-700 U(2) Part List1**

No	P/N	Part Description	Qty	Ref. No.	Print No.
51	3101050600010	Chip capacitor 0402 6PF B 50V	1	C157	B3G
52	3101054710010	Chip capacitor 0402 470PF K 50V	1	C158	B3G
53	3101051040060	Chip capacitor 0402 0.1UF K 16V	1	C159	B3G
54	3101062700010	Chip capacitor 0603 27PF J 50V	1	C161*	B4D
55	3101060600010	Chip capacitor 0603 6PF B 50V	1	C164*	B4C
56	3101054710010	Chip capacitor 0402 470PF K 50V	1	C201	B2F
57	3101050400010	Chip capacitor 0402 4PF B 50V	1	C202*	B3F
58	3101051200020	Chip capacitor 0402 12PF J 50V	1	C203*	B2F
59	3101050700010	Chip capacitor 0402 7PF B 50V	1	C204*	B2F
60	3101054710010	Chip capacitor 0402 470PF K 50V	1	C205	B2F
61	3101051040060	Chip capacitor 0402 0.1UF K 16V	1	C206	B1H
62	3101051040060	Chip capacitor 0402 0.1UF K 16V	1	C208	B1H
63	3101054710010	Chip capacitor 0402 470PF K 50V	1	C209	B2G
64	3101051020010	Chip capacitor 0402 1000PF K 50V	1	C210	B2G
65	3101055600000	Chip capacitor 0402 56PF J 50V	1	C211*	B2G
66	3101054710010	Chip capacitor 0402 470PF K 50V	1	C212	B2G
67	3101051040060	Chip capacitor 0402 0.1UF K 16V	1	C213	B2G
68	3101051040060	Chip capacitor 0402 0.1UF K 16V	1	C214	B1H
69	3101051040060	Chip capacitor 0402 0.1UF K 16V	1	C215	B2H
70	3101051030020	Chip capacitor 0402 0.01UF K 25V	1	C219	B2G
71	3104071060010	Ta-capacitor0805 10UF M 6.3V	1	C220	B2G
72	3101061050060	Chip capacitor 0603 1UF K 10V	1	C221	T1G
73	3101051820000	Chip capacitor 0402 1800PF K 50V	1	C222	T1G
74	3101051040060	Chip capacitor 0402 0.1UF K 16V	1	C224	B2F
75	3101058200000	Chip capacitor 0402 82PF J 50V	1	C225	B1G
76	3101051030020	Chip capacitor 0402 0.01UF K 25V	1	C226	T1G
77	3101051040060	Chip capacitor 0402 0.1UF K 16V	1	C227	T1G
78	3101053300000	Chip capacitor 0402 33PF J 50V	1	C228	B1G
79	3101051040060	Chip capacitor 0402 0.1UF K 16V	1	C229	B1G
80	3101051030020	Chip capacitor 0402 0.01UF K 25V	1	C230	B1G
81	3101051040060	Chip capacitor 0402 0.1UF K 16V	1	C231	T1H
82	3101050400010	Chip capacitor 0402 4PF B 50V	1	C233	B1F
83	3101051030020	Chip capacitor 0402 0.01UF K 25V	1	C236	B1E
84	3101051030020	Chip capacitor 0402 0.01UF K 25V	1	C237	B1E
85	3101051020010	Chip capacitor 0402 1000PF K 50V	1	C238	B1E
86	3101051030020	Chip capacitor 0402 0.01UF K 25V	1	C239	B1E
87	3101058200000	Chip capacitor 0402 82PF J 50V	1	C240	B1E
88	3101051030020	Chip capacitor 0402 0.01UF K 25V	1	C241	B2E
89	3101057590000	Chip capacitor 0402 7.5PF(±0.1pF)(50V)	1	C243	B2D
90	3101050900000	Chip capacitor 0402 9PF B 50V	1	C244*	B2D
91	3101050400010	Chip capacitor 0402 4PF B 50V	1	C245*	B2D
92	3101051030020	Chip capacitor 0402 0.01UF K 25V	1	C246	B3D
93	3101050700010	Chip capacitor 0402 7PF B 50V	1	C247*	B2D
94	3101050900000	Chip capacitor 0402 9PF B 50V	1	C248*	B2D
95	3101051040060	Chip capacitor 0402 0.1UF K 16V	1	C251	B2C
96	3101051010030	Chip capacitor 0402 100PF J 50V	1	C252	B3C
97	3101051010030	Chip capacitor 0402 100PF J 50V	1	C253	B2C
98	3101051040060	Chip capacitor 0402 0.1UF K 16V	1	C254	B2B
99	3101050500010	Chip capacitor 0402 5PF B 50V	1	C255*	B3B
100	3101051200020	Chip capacitor 0402 12PF J 50V	1	C256*	B3B

**TC-700 Part List 1**

**TC-700 U(2) Part List1**

No	P/N	Part Description	Qty	Ref. No.	Print No.
101	3101050400010	Chip capacitor 0402 4PF B 50V	1	C257*	B3B
102	3101051010030	Chip capacitor 0402 100PF J 50V	1	C258	B3B
103	3101051200020	Chip capacitor 0402 12PF J 50V	1	C259*	B3B
104	3101050800000	Chip capacitor 0402 8PF B 50V	1	C260*	B3B
105	3101051040060	Chip capacitor 0402 0.1UF K 16V	1	C264	B3C
106	3101051010030	Chip capacitor 0402 100PF J 50V	1	C265	B3C
107	3101050400010	Chip capacitor 0402 4PF B 50V	1	C268*	B1E
108	3101054710010	Chip capacitor 0402 470PF K 50V	1	C301	B4I
109	3101050300000	Chip capacitor 0402 3PF B 50V	1	C302	B4I
110	3101051000020	Chip capacitor 0402 10PF J 50V	1	C303	B3I
111	3101051020010	Chip capacitor 0402 1000PF K 50V	1	C304	B4H
112	3101062200010	Chip capacitor 0603 22PF J 50V	1	C305*	B3H
113	3101060300010	Chip capacitor 0603 3PF B 50V	1	C306*	B3H
114	3101060590010	Chip capacitor 0603 0.5PF B 50V	1	C307	B3G
115	3101060300010	Chip capacitor 0603 3PF B 50V	1	C308*	B3G
116	3101062490000	Chip capacitor 0603 2.4PF B 50V	1	C309*	B3G
117	3101060300010	Chip capacitor 0603 3PF B 50V	1	C310*	B4H
118	3101054710010	Chip capacitor 0402 470PF K 50V	1	C311	B4G
119	3101060590010	Chip capacitor 0603 0.5PF B 50V	1	C312	B4G
120	3101060600010	Chip capacitor 0603 6PF B 50V	1	C313	B3G
121	3101054710010	Chip capacitor 0402 470PF K 50V	1	C314	B4G
122	3101054710010	Chip capacitor 0402 470PF K 50V	1	C315	B5G
123	3104074750030	Ta-capacitor0805 4.7UF M 10V	1	C316	B5G
124	3101054710010	Chip capacitor 0402 470PF K 50V	1	C317	B5G
125	3101051020010	Chip capacitor 0402 1000PF K 50V	1	C318	B5G
126	3101065600000	Chip capacitor 0603 56PF J 50V	1	C319	B5H
127	3101061500010	Chip capacitor 0603 15PF J 50V	1	C320	B5H
128	3101060500010	Chip capacitor 0603 5PF B 50V	1	C321*	B4H
129	3101064790010	Chip capacitor 0603 4.7PF B 50V	1	C322*	B4H
130	3101061000000	Chip capacitor 0603 10PF J 50V	1	C323	B4G
131	3101051020010	Chip capacitor 0402 1000PF K 50V	1	C324	B4G
132	3101060590010	Chip capacitor 0603 0.5PF B 50V	1	C325	B4G
133	3104071040010	Ta-capacitor0805 0.1UF M 20V	1	C326	B4I
134	3104071050010	★Ta-capacitor0805 1UF M 16V	1	C327	B5I
135	3104071040010	Ta-capacitor0805 0.1UF M 20V	1	C328	B5I
136	3101051010030	Chip capacitor 0402 100PF J 50V	1	C329	B4I
137	3101051000020	Chip capacitor 0402 10PF J 50V	1	C330	B3I
138	3101051020010	Chip capacitor 0402 1000PF K 50V	1	C331	B4J
139	3101051020010	Chip capacitor 0402 1000PF K 50V	1	C332	B4J
140	3101051040060	Chip capacitor 0402 0.1UF K 16V	1	C334	B4J
141	3101051000020	Chip capacitor 0402 10PF J 50V	1	C335	B3J
142	3104074750030	Ta-capacitor0805 4.7UF M 10V	1	C336	B5J
143	3101051040060	Chip capacitor 0402 0.1UF K 16V	1	C337	B5J
144	3101051040060	Chip capacitor 0402 0.1UF K 16V	1	C338	B5I
145	3101051010030	Chip capacitor 0402 100PF J 50V	1	C339	B5J
146	3101051010030	Chip capacitor 0402 100PF J 50V	1	C340	B5J
147	3101051010030	Chip capacitor 0402 100PF J 50V	1	C341	B5J
148	3104071060010	Ta-capacitor0805 10UF M 6.3V	1	C342	B3I
149	3101054710010	Chip capacitor 0402 470PF K 50V	1	C343	B3I
150	3104074750030	Ta-capacitor0805 4.7UF M 10V	1	C344	B3I

**TC-700 Part List 1**

**TC-700 U(2) Part List1**

No	P/N	Part Description	Qty	Ref. No.	Print No.
151	3101051040060	Chip capacitor 0402 0.1UF K 16V	1	C345	B2I
152	3101051020010	Chip capacitor 0402 1000PF K 50V	1	C347	B2I
153	3101051030020	Chip capacitor 0402 0.01UF K 25V	1	C348	B2I
154	3101061020000	Chip capacitor 0603 1000PF K 50V	1	C349	B2H
155	3101066800000	Chip capacitor 0603 68PF J 50V	1	C351	B2H
156	3101063000010	Chip capacitor 0603 30PF J 50V	1	C352	B2H
157	3104071050010	★Ta-capacitor0805 1UF M 16V	1	C354	B3G
158	3101051040060	Chip capacitor 0402 0.1UF K 16V	1	C355	B4G
159	3101051040060	Chip capacitor 0402 0.1UF K 16V	1	C356	B4G
160	3101051030020	Chip capacitor 0402 0.01UF K 25V	1	C357	B3G
161	3101054710010	Chip capacitor 0402 470PF K 50V	1	C358	B4I
162	3101051000020	Chip capacitor 0402 10PF J 50V	1	C359	B4I
163	3101050500010	Chip capacitor 0402 5PF B 50V	1	C360	B4I
164	3101050500010	Chip capacitor 0402 5PF B 50V	1	C361	B4I
165	3101054710010	Chip capacitor 0402 470PF K 50V	1	C362	B5I
166	3101052230000	Chip capacitor 0402 0.022UF K 16V	1	C401	T1F
167	3101054700010	Chip capacitor 0402 47PF J 50V	1	C402	T1E
168	3101051050000	Chip capacitor 0402 1UF K 6.3V	1	C403	T1E
169	3101051040060	Chip capacitor 0402 0.1UF K 16V	1	C404	T1E
170	3101051040060	Chip capacitor 0402 0.1UF K 16V	1	C405	T1E
171	3101051020010	Chip capacitor 0402 1000PF K 50V	1	C406	T1E
172	3101052240010	Chip capacitor 0402 0.22UF Z 10V	1	C407	T1F
173	3101054700010	Chip capacitor 0402 47PF J 50V	1	C408	B3K
174	3101051020010	Chip capacitor 0402 1000PF K 50V	1	C409	B2J
175	3101054740000	Chip capacitor 0402 0.47UF Z 6.3V	1	C410	B3K
176	3104071060010	Ta-capacitor0805 10UF M 6.3V	1	C412	T2C
177	3101054710010	Chip capacitor 0402 470PF K 50V	1	C413	T1E
178	3101102260010	Chip capacitor 1206 22uF +80%/-20% 10V	1	C415	T1F
179	3101051040060	Chip capacitor 0402 0.1UF K 16V	1	C416	T1E
180	3101051040060	Chip capacitor 0402 0.1UF K 16V	1	C417	T2E
181	3104071060010	Ta-capacitor 0805 10UF M 6.3V	1	C418	T2F
182	3101051030020	Chip capacitor 0402 0.01UF K 25V	1	C419	T2F
183	3101054700010	Chip capacitor 0402 47PF J 50V	1	C420	T1E
184	3101051830000	Chip capacitor 0402 0.018UF K 16V	1	C421	B2J
185	3101052230000	Chip capacitor 0402 0.022UF K 16V	1	C422	T1D
186	3101054710010	Chip capacitor 0402 470PF K 50V	1	C423	T1E
187	3101051530000	Chip capacitor 0402 0.015UF K 16V	1	C424	B2J
188	3101051050000	Chip capacitor 0402 1UF K 6.3V	1	C425	B3J
189	3101054710010	Chip capacitor 0402 470PF K 50V	1	C426	B3K
190	3101053330000	Chip capacitor 0402 0.033UF K 16V	1	C427	T1E
191	3101051820000	Chip capacitor 0402 1800PF K 50V	1	C430	B3J
192	3101051040060	Chip capacitor 0402 0.1UF K 16V	1	C432	B3J
193	3101054700010	Chip capacitor 0402 47PF J 50V	1	C444	B2I
194	3101061050060	Chip capacitor 0603 1UF K 10V	1	C445	B2I
195	3101056830000	Chip capacitor 0402 0.068UF K 6.3V	1	C446	B4J
196	3101052220010	Chip capacitor 0402 2.2nF K 50V	1	C447	B4K
197	3101051230000	Chip capacitor 0402 0.012UF K 16V	1	C448	B4J
198	3101053930000	Chip capacitor 0402 0.039UF K 10V	1	C449	B4K
199	3101051030020	Chip capacitor 0402 0.01UF K 25V	1	C450	B4K
200	3101052210010	Chip capacitor 0402 220PF K 50V	1	C451	B4K

**TC-700 Part List 1**

**TC-700 U(2) Part List1**

No	P/N	Part Description	Qty	Ref. No.	Print No.
201	3104074750030	Ta-capacitor0805 4.7UF M 10V	1	C452	B4K
202	3101051040060	Chip capacitor 0402 0.1UF K 16V	1	C458	B1K
203	3101051040060	Chip capacitor 0402 0.1UF K 16V	1	C459	T1J
204	3101055620010	Chip capacitor 0402 5600PF K 25V	1	C460	T1J
205	3101051030020	Chip capacitor 0402 0.01UF K 25V	1	C461	T1J
206	3101051020010	Chip capacitor 0402 1000PF K 50V	1	C462	T1J
207	3101051040060	Chip capacitor 0402 0.1UF K 16V	1	C463	T1J
208	3104074750030	Ta-capacitor0805 4.7UF M 10V	1	C464	T1K
209	3101051030020	Chip capacitor 0402 0.01UF K 25V	1	C465	T1K
210	3101051050000	Chip capacitor 0402 1UF K 6.3V	1	C467	B2I
211	3101051040060	Chip capacitor 0402 0.1UF K 16V	1	C469	B2J
212	3104071560020	Ta-capacitor0805 15UF M 6.3V	1	C470	B2J
213	3101052200010	Chip capacitor 0402 22PF J 50V	1	C471	B1J
214	3101052200010	Chip capacitor 0402 22PF J 50V	1	C472	B1K
215	3101051510000	Chip capacitor 0402 150PF(±5%)(50V)	1	C473	B2K
216	3101052730000	Chip capacitor 0402 0.027UF K 16V	1	C474	B2K
217	3101054740000	Chip capacitor 0402 0.47UF Z 6.3V	1	C475	B2K
218	3101053300000	Chip capacitor 0402 33PF J 50V	1	C476	B2K
219	3101055610000	Chip capacitor 0402 560PF K 50V	1	C477	B2K
220	3104071050010	★Ta-capacitor0805 1UF M 16V	1	C478	B3K
221	3104071050010	★Ta-capacitor0805 1UF M 16V	1	C479	B3K
222	3101052220010	Chip capacitor 0402 2.2nF K 50V	1	C480	B3K
223	3101053300000	Chip capacitor 0402 33PF J 50V	1	C481	B3K
224	3104074750030	Ta-capacitor0805 4.7UF M 10V	1	C483	B2I
225	3101051040060	Chip capacitor 0402 0.1UF K 16V	1	C484	B3J
226	3101054720000	Chip capacitor 0402 4700PF K 50V	1	C485	B4J
227	3101051030020	Chip capacitor 0402 0.01UF K 25V	1	C486	B4K
228	3104074750030	Ta-capacitor0805 4.7UF M 10V	1	C487	B2K
229	3101061050060	Chip capacitor 0603 1UF K 10V	1	C489	B3J
230	3001050000000	Chip resistor 0402 0Ω J 1/16W	1	C490	B3K
231	3101051050000	Chip capacitor 0402 1UF K 6.3V	1	C491	B3J
232	3101051830000	Chip capacitor 0402 0.018UF K 16V	1	C492	B2J
233	3101051530000	Chip capacitor 0402 0.015UF K 16V	1	C493	B2J
234	3101051040060	Chip capacitor 0402 0.1UF K 16V	1	C495	T1H
235	3101051050000	Chip capacitor 0402 1UF K 6.3V	1	C496	T2D
236	3101051020010	Chip capacitor 0402 1000PF K 50V	1	C497	B5K
237	3101054710010	Chip capacitor 0402 470PF K 50V	1	C498	B1B
238	3101054710010	Chip capacitor 0402 470PF K 50V	1	C499	T1C
239	3101051020010	Chip capacitor 0402 1000PF K 50V	1	C512	T2K
240	3101051500020	Chip capacitor 0402 15PF J 50V	1	C514	T4K
241	3101052700000	Chip capacitor 0402 27PF J 50V	1	C515	T3K
242	3101052700000	Chip capacitor 0402 27PF J 50V	1	C516	T4K
243	3101051020010	Chip capacitor 0402 1000PF K 50V	1	C517	B2A
244	3101054710010	Chip capacitor 0402 470PF K 50V	1	C518	B1B
245	3104071060010	Ta-capacitor 0805 10UF M 6.3V	1	C519	T1I
246	3101061050060	Chip capacitor 0603 1UF K 10V	1	C520	T1I
247	3101054710010	Chip capacitor 0402 470PF K 50V	1	C521	T1I
248	3101054710010	Chip capacitor 0402 470PF K 50V	1	C522	T1J
249	3101051040060	Chip capacitor 0402 0.1UF K 16V	1	C523	T1J
250	3101054710010	Chip capacitor 0402 470PF K 50V	1	C524	T1I

**TC-700 Part List 1**

**TC-700 U(2) Part List1**

No	P/N	Part Description	Qty	Ref. No.	Print No.
251	3101051050000	Chip capacitor 0402 1UF K 6.3V	1	C525	T4K
252	3104071060010	Ta-capacitor 0805 10UF M 6.3V	1	C526	T4J
253	3101054710010	Chip capacitor 0402 470PF K 50V	1	C527	T4K
254	3101054710010	Chip capacitor 0402 470PF K 50V	1	C528	T2B
255	3101054710010	Chip capacitor 0402 470PF K 50V	1	C529	T2B
256	3104074750030	Ta-capacitor0805 4.7UF M 10V	1	C530	T2B
257	3101051050000	Chip capacitor 0402 1UF K 6.3V	1	C531	T2G
258	3101051050000	Chip capacitor 0402 1UF K 6.3V	1	C532	T2H
259	3101054710010	Chip capacitor 0402 470PF K 50V	1	C533	T2H
260	3101054710010	Chip capacitor 0402 470PF K 50V	1	C535	T2H
261	3104071060010	Ta-capacitor 0805 10UF M 6.3V	1	C536	T3H
262	3101054710010	Chip capacitor 0402 470PF K 50V	1	C537	T3H
263	3101051020010	Chip capacitor 0402 1000PF K 50V	1	C538	T5J
264	3101051030020	Chip capacitor 0402 0.01UF K 25V	1	C539	T3A
265	3101051030020	Chip capacitor 0402 0.01UF K 25V	1	C540	T3A
266	3101051030020	Chip capacitor 0402 0.01UF K 25V	1	C541	T3A
267	3101051030020	Chip capacitor 0402 0.01UF K 25V	1	C542	T3A
268	3101051030020	Chip capacitor 0402 0.01UF K 25V	1	C545	T3I
269	3101051020010	Chip capacitor 0402 1000PF K 50V	1	C546	T3K
270	3101051020010	Chip capacitor 0402 1000PF K 50V	1	C558	B4A
271	3101051050000	Chip capacitor 0402 1UF K 6.3V	1	C559	T2G
272	3101051040060	Chip capacitor 0402 0.1UF K 16V	1	C601	T2D
273	3101052210010	Chip capacitor 0402 220PF K 50V	1	C602	T1C
274	3101052210010	Chip capacitor 0402 220PF K 50V	1	C603	T1C
275	3101051010030	Chip capacitor 0402 100PF J 50V	1	C605	T2C
276	3101051010030	Chip capacitor 0402 100PF J 50V	1	C607	T2C
277	3101051030020	Chip capacitor 0402 0.01UF K 25V	1	C608	T1F
278	3101051040060	Chip capacitor 0402 0.1UF K 16V	1	C609	T1F
279	3101054710010	Chip capacitor 0402 470PF K 50V	1	C610	T1G
280	3801045030170	Ceramic filter 450KHz±4.5KHz	1	CF202	B1I
281	3005051020010	Array resistor 0402 1K*4 J 1/16W*4	1	CP505	T2J
282	3005051020000	Array resistor 0402 1K*2 J 1/16W*2	1	CP506	T4J
283	3005051020000	Array resistor 0402 1K*2 J 1/16W*2	1	CP507	T3K
284	3005051020000	Array resistor 0402 1K*2 J 1/16W*2	1	CP509	T2I
285	3005051020000	Array resistor 0402 1K*2 J 1/16W*2	1	CP511	T2J
286	3005051020000	Array resistor 0402 1K*2 J 1/16W*2	1	CP512	T2J
287	3005051020000	Array resistor 0402 1K*2 J 1/16W*2	1	CP514	T4J
288	3005051020000	Array resistor 0402 1K*2 J 1/16W*2	1	CP516	T4I
289	3005051020000	Array resistor 0402 1K*2 J 1/16W*2	1	CP517	T4K
290	3005051020010	Array resistor 0402 1K*4 J 1/16W*4	1	CP518	T3I
291	3005051020010	Array resistor 0402 1K*4 J 1/16W*4	1	CP519	T3I
292	3005051020000	Array resistor 0402 1K*2 J 1/16W*2	1	CP524	T4I
293	3005051020010	Array resistor 0402 1K*4 J 1/16W*4	1	CP525	T4I
294	3005051020010	Array resistor 0402 1K*4 J 1/16W*4	1	CP526	T4J
295	3303020100080	Switch diode MA2S07700L 1.7*0.8mm	1	D101	B3F
296	3303020100070	Switch diode MA2Z07700L	1	D102	B4C
297	3303020100080	Switch diode MA2S07700L 1.7*0.8mm	1	D103	B4B
298	3303020100080	Switch diode MA2S07700L 1.7*0.8mm	1	D104	B4B
299	3303020100080	Switch diode MA2S07700L 1.7*0.8mm	1	D201	B3F
300	3303030100010	Switch diode DAN222(TL)	1	D202	B1H

**TC-700 Part List 1**

**TC-700 U(2) Part List1**

No	P/N	Part Description	Qty	Ref. No.	Print No.
301	3303030100010	Switch diode DAN222(TL)	1	D203	B1H
302	3304060300050	Varactor HVC350BTRF-E	1	D206	B2D
303	3304060300050	Varactor HVC350BTRF-E	1	D207	B2D
304	3399990000260	Diode HSM88ASTR-E	1	D208	B3B
305	3304060300050	Varactor HVC350BTRF-E	1	D209	B3B
306	3304060300050	Varactor HVC350BTRF-E	1	D210	B3B
307	3304060300050	Varactor HVC350BTRF-E	1	D301	B3H
308	3304060300050	Varactor HVC350BTRF-E	1	D302	B3H
309	3304060300050	Varactor HVC350BTRF-E	1	D303	B3H
310	3304060300050	Varactor HVC350BTRF-E	1	D304	B3H
311	3304040200000	Varactor BB179	1	D305	B3G
312	3303020100020	Switch diode MA2S11100L	1	D306	B5G
313	3304060300050	Varactor HVC350BTRF-E	1	D307	B5G
314	3304060300050	Varactor HVC350BTRF-E	1	D308	B5H
315	3304060300050	Varactor HVC350BTRF-E	1	D309	B5H
316	3304060300050	Varactor HVC350BTRF-E	1	D310	B5H
317	3303020100020	Switch diode MA2S11100L	1	D311	B5I
318	3303030300000	Schottky diode RB706F-40(T106)	1	D402	B4K
319	3303030300000	Schottky diode RB706F-40(T106)	1	D406	T1F
320	3303020100060	Switch diode MA3J74200L	1	D410	B4J
321	3399990000110	Diode ISR154-400	1	D501	B1B
322	3303010500190	Switch diode 1SS373(TPH3.F)	1	D502	T1I
323	3303010500190	Switch diode 1SS373(TPH3.F)	1	D503	T2H
324	3303020100020	Switch diode MA2S11100L	1	D504	T4K
325	3307110100070	LED KPT-1608SRC super bright red	1	D505	T1A
326	3307110100080	LED KPT-1608SGC super bright green	1	D506	T1A
327	4099000000060	Fuse SMD FUSE 0603/3.0A/32V	1	F501	T2A
328	3605008005070	Operational amplifier NJM2904V	1	IC101	T4E
329	3609030005620	Dedicated IC HSMS-2827	1	IC202	B3E
330	3603002005440	IF processing IC TA31136FNG(EL.HZ) 455MHz	1	IC204	B2G
331	3604025004350	PLL ADF4111BRUZ	1	IC301	B4I
332	3605017005540	Operational amplifier 1.7V TDA2822D	1	IC401	T2E
333	3605002057290	Operational amplifier TC75W51FU(TE12.F)	1	IC402	T1E
334	3605002057290	Operational amplifier TC75W51FU(TE12.F)	1	IC404	B2I
335	3605002057290	Operational amplifier TC75W51FU(TE12.F)	1	IC405	B4K
336	3605002057290	Operational amplifier TC75W51FU(TE12.F)	1	IC407	T1J
337	3613034001060	Base-band processing IC AK2346-E	1	IC408	B2J
338	3612031004430	Memory AT24C32AN-10SU-2.7	1	IC501	T2K
339	3608015000000	Power managing IC (voltage regulator) XC6201P502PR	1	IC502	T2B
340	3608020005750	Power managing IC TK11250CM-G 5.0V VOLTAGE REGULAT	1	IC503	T1I
341	3608015000000	Power managing IC (voltage regulator) XC6201P502PR	1	IC504	T3H
342	3619006005220	Low voltage detecting IC R3111N451C-TR-F	1	IC505	T4K
343	3610045000010	SCM M30624FGPGP#U5C	1	IC506*	T3J
344	4301080000020	Touch switch TC-700 emergency (SKRTLAE010)	1	K503	T4A
345	3210305180000	Multi-layer inductor 0402 18nH	1	L102*	B4F
346	3210305150010	Multi-layer inductor 0402 15nH	1	L103*	B4F
347	3221506601000	Chip ferrite bead 0603 600Ω±25%	1	L104	B4F
348	3213212102000	Multi-layer inductor 1008 1uH	1	L105	B4E
349	3221507221000	Chip ferrite bead 0805 220Ω±25%	1	L106	B3D
350	3001060000000	Chip resistor 0603 0Ω J 1/10W	1	L107*	B4E



**TC-700 Part List 1**

**TC-700 U(2) Part List1**

No	P/N	Part Description	Qty	Ref. No.	Print No.
351	3210107221000	Framework inductor 0805 220nH	1	L108	B4C
352	3231351680000	Air-core inductor E2-0.35*1.6*8TR	1	L109	B4D
353	3221507600000	Chip ferrite bead 0805 60Ω±25%	1	L110	B3D
354	3231351640000	Air-core inductor E2-0.35*1.6*4TL	1	L112*	B4B
355	3231351640000	Air-core inductor E2-0.35*1.6*4TL	1	L113*	B5B
356	3231351630000	Air-core inductor E2-0.35*1.6*3TR	1	L114*	B5B
357	3210209102010	Framework inductor 1210 1uH	1	L115	T5B
358	3231301340000	Air-core inductor E2 0.3*1.3*4TR	1	L116*	B4B
359	3210305220000	Multi-layer inductor 0402 22nH	1	L117*	B3G
360	3210305150010	Multi-layer inductor 0402 15nH	1	L201*	B2F
361	3210305150010	Multi-layer inductor 0402 15nH	1	L202*	B2F
362	3214307151000	Inductor 0805 150nH(Q)	1	L204	B1D
363	3214307151000	Inductor 0805 150nH(Q)	1	L205	B2E
364	3231351640000	Air-core inductor E2-0.35*1.6*4TL	1	L206*	B3D
365	3231351640000	Air-core inductor E2-0.35*1.6*4TL	1	L207*	B3D
366	3214307220010	Inductor 0805 22nH	1	L208*	B2C
367	3214307181000	Inductor 0805 180nH(Q)	1	L209	B2C
368	3214307220010	Inductor 0805 22nH	1	L210*	B2B
369	3231301250000	Air-core inductor E2-0.30*1.2*5TL	1	L211	B3B
370	3231301250000	Air-core inductor E2-0.30*1.2*5TL	1	L212	B3B
371	3210306180000	Multi-layer inductor 0603 18nH	1	L301	B4I
372	3213306332000	Multi-layer inductor 0603 3.3uH	1	L302	B3H
373	3213306332000	Multi-layer inductor 0603 3.3uH	1	L303	B3H
374	3214307220010	Inductor 0805 22nH	1	L304*	B3H
375	3210306220000	Multi-layer inductor 0603 22nH	1	L305*	B4G
376	3210306470000	Multi-layer inductor 0603 47nH	1	L306*	B3G
377	3221506601000	Chip ferrite bead 0603 600Ω±25%	1	L307	B4G
378	3213306332000	Multi-layer inductor 0603 3.3uH	1	L308	B5G
379	3213306332000	Multi-layer inductor 0603 3.3uH	1	L309	B5H
380	3210108230010	Framework inductor 1206 23nH	1	L310*	B4H
381	3221506601000	Chip ferrite bead 0603 600Ω±25%	1	L311	B3H
382	3210106101000	Framework inductor 0603 100nH±2%	1	L312	B4H
383	3213306332000	Multi-layer inductor 0603 3.3uH	1	L313	B4G
384	3221506601000	Chip ferrite bead 0603 600Ω±25%	1	L314	B4I
385	3213212561000	Multi-layer inductor 1008 0.56uH	1	L315	B3I
386	3221506601000	Chip ferrite bead 0603 600Ω±25%	1	L316	B4J
387	3210406331000	Multi-layer inductor 0603 330nH	1	L317	B2I
388	3210406331000	Multi-layer inductor 0603 330nH	1	L318	B2H
389	3210406331000	Multi-layer inductor 0603 330nH	1	L319	B2H
390	3213306332000	Multi-layer inductor 0603 3.3uH	1	L320	B4H
391	3210106101000	Framework inductor 0603 100nH±2%	1	L321	B4G
392	3210306180000	Multi-layer inductor 0603 18nH	1	L322	B4I
393	3221506601000	Chip ferrite bead 0603 600Ω±25%	1	L401	T1D
394	3221507221000	Chip ferrite bead 0805 220Ω±25%	1	L501	B2B
395	3210306221000	Multi-layer inductor 0603 220nH	1	L502	T4K
396	3210306221000	Multi-layer inductor 0603 220nH	1	L503	T3I
397	3210306221000	Multi-layer inductor 0603 220nH	1	L504	T4K
398	3401002000990	Transistor 2SC5108-Y(TE85L.F)	1	Q101	B4F
399	3406001000090	Transistor 2SC4988FRTR-E NPN	1	Q102	B4E
400	3502010000390	FET 2SK3475(TE12L.F)VHF and UHF band Amplifier	1	Q103	B3E

**TC-700 Part List 1**

**TC-700 U(2) Part List1**

No	P/N	Part Description	Qty	Ref. No.	Print No.
401	3502010000490	2SK3476(TE12L.Q)	1	Q104	B4D
402	3403008000030	Transistor DTC114TE	1	Q105	B5F
403	3503020000030	FET 2SK1824-T1-A	1	Q107	T5F
404	3403008000010	Transistor DTC114EE(TL)	1	Q108	T4F
405	3403008000010	Transistor DTC114EE(TL)	1	Q109	T4F
406	3403007000070	Transistor DTA144EE	1	Q110	T4F
407	3401002000990	Transistor 2SC5108-Y(TE85L.F)	1	Q111	B3G
408	3403007000070	Transistor DTA144EE	1	Q201	B1G
409	3401002000990	Transistor 2SC5108-Y(TE85L.F)	1	Q204	B1G
410	3403007000000	Transistor DTA114EE(TL)	1	Q205	T1H
411	3408002000000	Transistor 2SC3356-R-A	1	Q206	B1E
412	3418001000010	Transistor AT-41511-TR1G	1	Q207	B2B
413	3401002000990	Transistor 2SC5108-Y(TE85L.F)	1	Q301	B3I
414	3499000000140	Transistor 2SK508-K52-T1B-A	1	Q302	B3G
415	3503010000010	FET 2SJ243-T1-A	1	Q303	B4G
416	3401002000990	Transistor 2SC5108-Y(TE85L.F)	1	Q304	B3G
417	3499000000150	Transistor UMC4(NTR)	1	Q305	B4G
418	3403003000060	Transistor 2SC4617TLS	1	Q306	B5G
419	3499000000140	Transistor 2SK508-K52-T1B-A	1	Q307	B4H
420	3401002000990	Transistor 2SC5108-Y(TE85L.F)	1	Q308	B2I
421	3401002000290	Transistor 2SC4116-GR(T5L.F.H)	1	Q401	B3K
422	3499000000180	Transistor UFMMT717	1	Q403	T2E
423	3503020000030	FET 2SK1824-T1-A	1	Q404	T1F
424	3403008000070	Transistor DTC144EE(TL)	1	Q405	T2F
425	3403007000000	Transistor DTA114EE(TL)	1	Q406	T1H
426	3403008000010	Transistor DTC114EE(TL)	1	Q407	T1H
427	3503020000030	FET 2SK1824-T1-A	1	Q409	B3J
428	3403008000070	Transistor DTC144EE(TL)	1	Q501	T4K
429	3410001000020	Transistor 2SA1745	1	Q502	T2G
430	3503010000010	FET 2SJ243-T1-A	1	Q503	T1I
431	3503010000010	FET 2SJ243-T1-A	1	Q504	T1I
432	3403008000070	Transistor DTC144EE(TL)	1	Q505	T1I
433	3403008000010	Transistor DTC114EE(TL)	1	Q506	T1B
434	3403008000010	Transistor DTC114EE(TL)	1	Q507	T1B
435	3001053320000	Chip resistor 0402 3.3KΩ J 1/16W	1	R101	B3F
436	3001054730000	Chip resistor 0402 47KΩ J 1/16W	1	R102	B4F
437	3001053310010	Chip resistor 0402 330Ω J 1/16W	1	R103	B4F
438	3001052200000	Chip resistor 0402 22Ω J 1/16W	1	R104	B4F
439	3001056810000	Chip resistor 0402 680Ω J 1/16W	1	R105	B4F
440	3001051520000	Chip resistor 0402 1.5KΩ J 1/16W	1	R106	B4F
441	3001052200000	Chip resistor 0402 22Ω J 1/16W	1	R107	B4E
442	3001053310010	Chip resistor 0402 330Ω J 1/16W	1	R108	B4E
443	3001061000000	Chip resistor 0603 10Ω J 1/10W	1	R109	B3F
444	3001060000000	Chip resistor 0603 0Ω J 1/10W	1	R110	B3E
445	3001054700000	Chip resistor 0402 47Ω J 1/16W	1	R111	B4E
446	3001056820000	Chip resistor 0402 6.8KΩ J 1/16W	1	R112	B4E
447	3001054730000	Chip resistor 0402 47KΩ J 1/16W	1	R113	B4E
448	3001070000000	Chip resistor 0805 0Ω J 1/8W	1	R114*	B4E
449	3001064700000	Chip resistor 0603 47Ω J 1/10W	1	R115	B5E
450	3001064730000	Chip resistor 0603 47KΩ J 1/10W	1	R116	B5E

**TC-700 Part List 1**

**TC-700 U(2) Part List1**

No	P/N	Part Description	Qty	Ref. No.	Print No.
451	3001054730000	Chip resistor 0402 47KΩ J 1/16W	1	R117	B5E
452	3001053320000	Chip resistor 0402 3.3KΩ J 1/16W	1	R118	B3G
453	3001070000000	Chip resistor 0805 0Ω J 1/8W	1	R120	B4C
454	3001062710000	Chip resistor 0603 270Ω J 1/10W	1	R121	B3C
455	3001062710000	Chip resistor 0603 270Ω J 1/10W	1	R122	B3C
456	3001053910000	Chip resistor 0402 390Ω J 1/16W	1	R123	B5E
457	3001053320000	Chip resistor 0402 3.3KΩ J 1/16W	1	R124	B5F
458	3099080398000	Chip resistor 1206 0.39Ω J 1/4W	1	R125	T4B
459	3099080398000	Chip resistor 1206 0.39Ω J 1/4W	1	R126	T4B
460	3099080398000	Chip resistor 1206 0.39Ω J 1/4W	1	R127	T4B
461	3001051540000	Chip resistor 0402 150KΩ F 1/16W	1	R134	T4E
462	3001051540000	Chip resistor 0402 150KΩ F 1/16W	1	R135	T4E
463	3001051540000	Chip resistor 0402 150KΩ F 1/16W	1	R136	T5E
464	3001051540000	Chip resistor 0402 150KΩ F 1/16W	1	R137	T5E
465	3001051540000	Chip resistor 0402 150KΩ F 1/16W	1	R138	T5F
466	3001051540000	Chip resistor 0402 150KΩ F 1/16W	1	R139	T5F
467	3001051030000	Chip resistor 0402 10KΩ J 1/16W	1	R141	T5E
468	3001051050020	Chip resistor 0402 1MΩ J 1/16W	1	R142	T4E
469	3001061840000	Chip resistor 0603 180KΩ J 1/10W	1	R143*	T4F
470	3001052220000	Chip resistor 0402 2.2KΩ J 1/16W	1	R144	T4F
471	3001054730000	Chip resistor 0402 47KΩ J 1/16W	1	R145	T5F
472	3001051040010	Chip resistor 0402 100KΩ J 1/16W	1	R146*	T4F
473	3001050000000	Chip resistor 0402 0Ω J 1/16W	1	R147	T5F
474	3001053320000	Chip resistor 0402 3.3KΩ J 1/16W	1	R148	B3G
475	3001055620000	Chip resistor 0402 5.6KΩ J 1/16W	1	R149	B3G
476	3001052710010	Chip resistor 0402 270Ω J 1/16W	1	R150	B3G
477	3001053320000	Chip resistor 0402 3.3KΩ J 1/16W	1	R151	B3G
478	3001051000000	Chip resistor 0402 10Ω J 1/16W	1	R152	B3G
479	3001051030000	Chip resistor 0402 10KΩ J 1/16W	1	R201	B2F
480	3001051800000	Chip resistor 0402 18Ω J 1/16W	1	R202*	B3F
481	3001051520000	Chip resistor 0402 1.5KΩ J 1/16W	1	R203	B1G
482	3001052230010	Chip resistor 0402 22KΩ J 1/16W	1	R204	B1H
483	3001054720000	Chip resistor 0402 4.7KΩ J 1/16W	1	R205	B1H
484	3001052230010	Chip resistor 0402 22KΩ J 1/16W	1	R206	B1H
485	3001052230010	Chip resistor 0402 22KΩ J 1/16W	1	R207	B1H
486	3001052230010	Chip resistor 0402 22KΩ J 1/16W	1	R208	B1H
487	3001054720000	Chip resistor 0402 4.7KΩ J 1/16W	1	R209	B1H
488	3001052720000	Chip resistor 0402 2.7KΩ J 1/16W	1	R211	B2F
489	3001058230000	Chip resistor 0402 82KΩ J 1/16W	1	R212	B2G
490	3001054720000	Chip resistor 0402 4.7KΩ J 1/16W	1	R213	B2G
491	3001051000000	Chip resistor 0402 10Ω J 1/16W	1	R214	B2G
492	3001054730000	Chip resistor 0402 47KΩ J 1/16W	1	R215	T1H
493	3001053320000	Chip resistor 0402 3.3KΩ J 1/16W	1	R216	T1G
494	3001051820000	Chip resistor 0402 1.8KΩ J 1/16W	1	R217	B1G
495	3001051040010	Chip resistor 0402 100KΩ J 1/16W	1	R218	T1H
496	3001052720000	Chip resistor 0402 2.7KΩ J 1/16W	1	R219	B1G
497	3001056840000	Chip resistor 0402 680KΩ J 1/16W	1	R220	B1G
498	3101061030010	Chip capacitor 0603 0.01UF K 25V	1	R221	T1G
499	3001051010000	Chip resistor 0402 100Ω J 1/16W	1	R222	B1G
500	3001051010000	Chip resistor 0402 100Ω J 1/16W	1	R223	B1E

**TC-700 Part List 1**

**TC-700 U(2) Part List1**

No	P/N	Part Description	Qty	Ref. No.	Print No.
501	3001052210000	Chip resistor 0402 220Ω J 1/16W	1	R225	B1E
502	3001052700000	Chip resistor 0402 27Ω J 1/16W	1	R226	B1E
503	3001056820000	Chip resistor 0402 6.8KΩ J 1/16W	1	R227	B1E
504	3001051020010	Chip resistor 0402 1KΩ J 1/16W	1	R228	B1E
505	3001052220000	Chip resistor 0402 2.2KΩ J 1/16W	1	R229	B1E
506	3001052710010	Chip resistor 0402 270Ω J 1/16W	1	R230	B2E
507	3001051800000	Chip resistor 0402 18Ω J 1/16W	1	R231	B2E
508	3001052710010	Chip resistor 0402 270Ω J 1/16W	1	R232	B2E
509	3001050000000	Chip resistor 0402 0Ω J 1/16W	1	R233	B2D
510	3001051040010	Chip resistor 0402 100KΩ J 1/16W	1	R234	B2D
511	3001051040010	Chip resistor 0402 100KΩ J 1/16W	1	R235	B2D
512	3001050000000	Chip resistor 0402 0Ω J 1/16W	1	R236	B2B
513	3001054320000	Chip resistor 0402 4.3KΩ J 1/16W	1	R237	B3C
514	3001051230000	Chip resistor 0402 12KΩ J 1/16W	1	R238	B3B
515	3001056820000	Chip resistor 0402 6.8KΩ J 1/16W	1	R239	B2B
516	3001051040010	Chip resistor 0402 100KΩ J 1/16W	1	R240	B3B
517	3001051040010	Chip resistor 0402 100KΩ J 1/16W	1	R241	B2D
518	3001051040010	Chip resistor 0402 100KΩ J 1/16W	1	R242	B3B
519	3001055110000	Chip resistor 0402 510Ω J 1/16W	1	R251	B3C
520	3001058230000	Chip resistor 0402 82KΩ J 1/16W	1	R252	B2G
521	3001050000000	Chip resistor 0402 0Ω J 1/16W	1	R254	T1G
522	3001051020010	Chip resistor 0402 1KΩ J 1/16W	1	R301	B4I
523	3001051540020	Chip resistor 0402 150KΩ J 1/16W	1	R302	B3I
524	3001051510000	Chip resistor 0402 150Ω J 1/16W	1	R304	B4H
525	3001051010000	Chip resistor 0402 100Ω J 1/16W	1	R305	B4G
526	3001052240000	Chip resistor 0402 220KΩ J 1/16W	1	R307*	B4G
527	3001051010000	Chip resistor 0402 100Ω J 1/16W	1	R308	B4G
528	3001052790000	Chip resistor 0402 2.7Ω J 1/16W	1	R309	B4G
529	3001051040010	Chip resistor 0402 100KΩ J 1/16W	1	R310	B4G
530	3001051020010	Chip resistor 0402 1KΩ J 1/16W	1	R311	B4G
531	3001054720000	Chip resistor 0402 4.7KΩ J 1/16W	1	R312	B5G
532	3001054730000	Chip resistor 0402 47KΩ J 1/16W	1	R313	B3G
533	3001051810010	Chip resistor 0402 180Ω J 1/16W	1	R314	B5G
534	3001050000000	Chip resistor 0402 0Ω J 1/16W	1	R315	B4I
535	3001052220000	Chip resistor 0402 2.2KΩ J 1/16W	1	R316	B4I
536	3001052720000	Chip resistor 0402 2.7KΩ J 1/16W	1	R317	B4I
537	3001055610000	Chip resistor 0402 560Ω J 1/16W	1	R318	B4I
538	3001055610000	Chip resistor 0402 560Ω J 1/16W	1	R319	B4I
539	3001054720000	Chip resistor 0402 4.7KΩ J 1/16W	1	R320	B4I
540	3001051030000	Chip resistor 0402 10KΩ J 1/16W	1	R321	B4J
541	3001054730000	Chip resistor 0402 47KΩ J 1/16W	1	R322*	B3G
542	3001051030000	Chip resistor 0402 10KΩ J 1/16W	1	R336	B5J
543	3001051840000	Chip resistor 0402 180KΩ J 1/16W	1	R337	B3I
544	3001059130000	Chip resistor 0402 91KΩ F 1/16W	1	R338	B3I
545	3001051240000	Chip resistor 0402 120KΩ J 1/16W	1	R339	B3I
546	3001051000000	Chip resistor 0402 10Ω J 1/16W	1	R344	B2I
547	3001052240000	Chip resistor 0402 220KΩ J 1/16W	1	R345	B2I
548	3001051010000	Chip resistor 0402 100Ω J 1/16W	1	R346	B2I
549	3001051030000	Chip resistor 0402 10KΩ J 1/16W	1	R347	B4I
550	3001051000000	Chip resistor 0402 10Ω J 1/16W	1	R348	B4J

**TC-700 Part List 1**

**TC-700 U(2) Part List1**

No	P/N	Part Description	Qty	Ref. No.	Print No.
551	3001051000000	Chip resistor 0402 10Ω J 1/16W	1	R349	B5I
552	3001051000000	Chip resistor 0402 10Ω J 1/16W	1	R350	B5I
553	3001051540000	Chip resistor 0402 150KΩ F 1/16W	1	R351	B5I
554	3001051020010	Chip resistor 0402 1KΩ J 1/16W	1	R352	B5I
555	3001051020010	Chip resistor 0402 1KΩ J 1/16W	1	R400	T2F
556	3001052730000	Chip resistor 0402 27KΩ J 1/16W	1	R401	T1E
557	3001050000000	Chip resistor 0402 0Ω J 1/16W	1	R402	T1F
558	3001051040010	Chip resistor 0402 100KΩ J 1/16W	1	R403	T1F
559	3001050000000	Chip resistor 0402 0Ω J 1/16W	1	R404	B3K
560	3001051020010	Chip resistor 0402 1KΩ J 1/16W	1	R405	B3K
561	3001051030000	Chip resistor 0402 10KΩ J 1/16W	1	R407	B3K
562	3001051050020	Chip resistor 0402 1MΩ J 1/16W	1	R408	T1E
563	3001051530000	Chip resistor 0402 15KΩ J 1/16W	1	R409	B3J
564	3001054720000	Chip resistor 0402 4.7KΩ J 1/16W	1	R410	T1E
565	3001054790000	Chip resistor 0402 4.7Ω J 1/16W	1	R411	T1E
566	3001054790000	Chip resistor 0402 4.7Ω J 1/16W	1	R412	T2E
567	3001054730000	Chip resistor 0402 47KΩ J 1/16W	1	R414	T2F
568	3001054710000	Chip resistor 0402 470Ω J 1/16W	1	R415	T2B
569	3001051820000	Chip resistor 0402 1.8KΩ J 1/16W	1	R416	T2C
570	3001051020010	Chip resistor 0402 1KΩ J 1/16W	1	R417	T3F
571	3001051030000	Chip resistor 0402 10KΩ J 1/16W	1	R418	T2F
572	3001053330010	Chip resistor 0402 33KΩ J 1/16W	1	R419	B2I
573	3001052220000	Chip resistor 0402 2.2KΩ J 1/16W	1	R420	T2E
574	3001051830000	Chip resistor 0402 18KΩ J 1/16W	1	R421	B2I
575	3001051830000	Chip resistor 0402 18KΩ J 1/16W	1	R422	B2I
576	3001050000000	Chip resistor 0402 0Ω J 1/16W	1	R424	B2J
577	3001051540020	Chip resistor 0402 150KΩ J 1/16W	1	R425	T1E
578	3001051030000	Chip resistor 0402 10KΩ J 1/16W	1	R426	B3K
579	3001056820000	Chip resistor 0402 6.8KΩ J 1/16W	1	R427	B3J
580	3001051040010	Chip resistor 0402 100KΩ J 1/16W	1	R428	B2J
581	3001051040010	Chip resistor 0402 100KΩ J 1/16W	1	R429	T1J
582	3001051040010	Chip resistor 0402 100KΩ J 1/16W	1	R430	T1J
583	3001052230010	Chip resistor 0402 22KΩ J 1/16W	1	R431	T1J
584	3001051030000	Chip resistor 0402 10KΩ J 1/16W	1	R432	T1J
585	3001052230010	Chip resistor 0402 22KΩ J 1/16W	1	R433	T1J
586	3001051010000	Chip resistor 0402 100Ω J 1/16W	1	R434	T1A
587	3001051000000	Chip resistor 0402 10Ω J 1/16W	1	R435	T2A
588	3001051020010	Chip resistor 0402 1KΩ J 1/16W	1	R436	T2F
589	3001052730000	Chip resistor 0402 27KΩ J 1/16W	1	R437*	B3J
590	3001051830000	Chip resistor 0402 18KΩ J 1/16W	1	R438	T1E
591	3001052240000	Chip resistor 0402 220KΩ J 1/16W	1	R439	B2I
592	3001051530000	Chip resistor 0402 15KΩ J 1/16W	1	R440	T1E
593	3001058230000	Chip resistor 0402 82KΩ J 1/16W	1	R441	B2I
594	3001051030000	Chip resistor 0402 10KΩ J 1/16W	1	R442	B3K
595	3001053330010	Chip resistor 0402 33KΩ J 1/16W	1	R443	B2I
596	3001050000000	Chip resistor 0402 0Ω J 1/16W	1	R444	B2I
597	3001052230010	Chip resistor 0402 22KΩ J 1/16W	1	R445	B4J
598	3001051840000	Chip resistor 0402 180KΩ J 1/16W	1	R446	B4J
599	3001051840000	Chip resistor 0402 180KΩ J 1/16W	1	R447	B4J
600	3001051040010	Chip resistor 0402 100KΩ J 1/16W	1	R448	B4K

**TC-700 Part List 1**

**TC-700 U(2) Part List1**

No	P/N	Part Description	Qty	Ref. No.	Print No.
601	3001053940000	Chip resistor 0402 390KΩ J 1/16W	1	R449	B4K
602	3001058230000	Chip resistor 0402 82KΩ J 1/16W	1	R450	B4K
603	3001051830000	Chip resistor 0402 18KΩ J 1/16W	1	R451	B4K
604	3001051830000	Chip resistor 0402 18KΩ J 1/16W	1	R452	B4K
605	3001050000000	Chip resistor 0402 0Ω J 1/16W	1	R453	B3K
606	3001051010000	Chip resistor 0402 100Ω J 1/16W	1	R454	T1D
607	3001050000000	Chip resistor 0402 0Ω J 1/16W	1	R455	T2D
608	3001051000000	Chip resistor 0402 10Ω J 1/16W	1	R456	T1D
609	3001050000000	Chip resistor 0402 0Ω J 1/16W	1	R457	B3K
610	3001052230010	Chip resistor 0402 22KΩ J 1/16W	1	R458	B3J
611	3001054720000	Chip resistor 0402 4.7KΩ J 1/16W	1	R459	T1J
612	3001051530000	Chip resistor 0402 15KΩ J 1/16W	1	R460	B3K
613	3001051030000	Chip resistor 0402 10KΩ J 1/16W	1	R461	T1K
614	3001051050020	Chip resistor 0402 1MΩ J 1/16W	1	R462	T1K
615	3001051030000	Chip resistor 0402 10KΩ J 1/16W	1	R463	T1J
616	3001051540020	Chip resistor 0402 150KΩ J 1/16W	1	R464	T1K
617	3001051540020	Chip resistor 0402 150KΩ J 1/16W	1	R465	T1K
618	3001051020010	Chip resistor 0402 1KΩ J 1/16W	1	R466	T1J
619	3001051030000	Chip resistor 0402 10KΩ J 1/16W	1	R467	T1J
620	3001051020010	Chip resistor 0402 1KΩ J 1/16W	1	R468	T1C
621	3001051030000	Chip resistor 0402 10KΩ J 1/16W	1	R469	T1H
622	3001056830000	Chip resistor 0402 68KΩ J 1/16W	1	R470	B3K
623	3001051030000	Chip resistor 0402 10KΩ J 1/16W	1	R471	B2K
624	3001055630000	Chip resistor 0402 56KΩ J 1/16W	1	R472	B2K
625	3001055630000	Chip resistor 0402 56KΩ J 1/16W	1	R473	B2K
626	3001051050020	Chip resistor 0402 1MΩ J 1/16W	1	R474	B2J
627	3001051040010	Chip resistor 0402 100KΩ J 1/16W	1	R475	B2K
628	3001051030000	Chip resistor 0402 10KΩ J 1/16W	1	R476	B2K
629	3001053330010	Chip resistor 0402 33KΩ J 1/16W	1	R477	B2K
630	3001052730000	Chip resistor 0402 27KΩ J 1/16W	1	R478	B2K
631	3001055130010	Chip resistor 0402 51KΩ J 1/16W	1	R479	B3K
632	3001051030000	Chip resistor 0402 10KΩ J 1/16W	1	R480	B3K
633	3001053340000	Chip resistor 0402 330KΩ J 1/16W	1	R481	B3K
634	3001051830000	Chip resistor 0402 18KΩ J 1/16W	1	R482*	B3J
635	3001051530000	Chip resistor 0402 15KΩ J 1/16W	1	R483*	B3J
636	3001053930000	Chip resistor 0402 39KΩ J 1/16W	1	R484	B3I
637	3001054720000	Chip resistor 0402 4.7KΩ J 1/16W	1	R485	B3J
638	3001051040010	Chip resistor 0402 100KΩ J 1/16W	1	R486	T1H
639	3001051030000	Chip resistor 0402 10KΩ J 1/16W	1	R487	B4J
640	3001054730000	Chip resistor 0402 47KΩ J 1/16W	1	R488	B4J
641	3001051030000	Chip resistor 0402 10KΩ J 1/16W	1	R489	B4J
642	3001054720000	Chip resistor 0402 4.7KΩ J 1/16W	1	R490	B4K
643	3101051050000	Chip capacitor 0402 1UF K 6.3V	1	R491	T1H
644	3001053940000	Chip resistor 0402 390KΩ J 1/16W	1	R492	B3J
645	3001051040010	Chip resistor 0402 100KΩ J 1/16W	1	R493	B3J
646	3001052230010	Chip resistor 0402 22KΩ J 1/16W	1	R494	B2J
647	3001050000000	Chip resistor 0402 0Ω J 1/16W	1	R495	B3J
648	3001054720000	Chip resistor 0402 4.7KΩ J 1/16W	1	R496	T1H
649	3001050000000	Chip resistor 0402 0Ω J 1/16W	1	R497	T1H
650	3001051530000	Chip resistor 0402 15KΩ J 1/16W	1	R498	B2J

**TC-700 Part List 1**

**TC-700 U(2) Part List1**

No	P/N	Part Description	Qty	Ref. No.	Print No.
651	3001052230010	Chip resistor 0402 22KΩ J 1/16W	1	R499	T1E
652	3001054730000	Chip resistor 0402 47KΩ J 1/16W	1	R502	T2K
653	3001050000000	Chip resistor 0402 0Ω J 1/16W	1	R504	T5J
654	3001054730000	Chip resistor 0402 47KΩ J 1/16W	1	R506	T5J
655	3001054730000	Chip resistor 0402 47KΩ J 1/16W	1	R507	T2J
656	3001051030000	Chip resistor 0402 10KΩ J 1/16W	1	R508	T2J
657	3001050000000	Chip resistor 0402 0Ω J 1/16W	1	R510	T3K
658	3001051020010	Chip resistor 0402 1KΩ J 1/16W	1	R512	T4I
659	3001054730000	Chip resistor 0402 47KΩ J 1/16W	1	R515	T1I
660	3001051040010	Chip resistor 0402 100KΩ J 1/16W	1	R516	T4K
661	3001051030000	Chip resistor 0402 10KΩ J 1/16W	1	R517	T4K
662	3001050000000	Chip resistor 0402 0Ω J 1/16W	1	R519	T1I
663	3001054720000	Chip resistor 0402 4.7KΩ J 1/16W	1	R520	T2G
664	3001052240000	Chip resistor 0402 220KΩ J 1/16W	1	R521	T2H
665	3001051020010	Chip resistor 0402 1KΩ J 1/16W	1	R522	T2H
666	3001053340000	Chip resistor 0402 330KΩ J 1/16W	1	R523	T2H
667	3001054730000	Chip resistor 0402 47KΩ J 1/16W	1	R525	T3H
668	3001054730000	Chip resistor 0402 47KΩ J 1/16W	1	R526	T4H
669	3001054730000	Chip resistor 0402 47KΩ J 1/16W	1	R527	T4H
670	3001054730000	Chip resistor 0402 47KΩ J 1/16W	1	R528	T3H
671	3001052210000	Chip resistor 0402 220Ω J 1/16W	1	R530	T1A
672	3001051810010	Chip resistor 0402 180Ω J 1/16W	1	R531	T1A
673	3001051020010	Chip resistor 0402 1KΩ J 1/16W	1	R534	T3I
674	3001054730000	Chip resistor 0402 47KΩ J 1/16W	1	R535	T5J
675	3001054730000	Chip resistor 0402 47KΩ J 1/16W	1	R536	T5J
676	3001054730000	Chip resistor 0402 47KΩ J 1/16W	1	R538	T5J
677	3001054730000	Chip resistor 0402 47KΩ J 1/16W	1	R539	T4H
678	3001052240000	Chip resistor 0402 220KΩ J 1/16W	1	R548	B4A
679	3001054730000	Chip resistor 0402 47KΩ J 1/16W	1	R549	T2G
680	3001051020010	Chip resistor 0402 1KΩ J 1/16W	1	R550	T2J
681	3001051020010	Chip resistor 0402 1KΩ J 1/16W	1	R551	T4J
682	3001051020010	Chip resistor 0402 1KΩ J 1/16W	1	R553	T2I
683	3001051020010	Chip resistor 0402 1KΩ J 1/16W	1	R555	T4J
684	3001054730000	Chip resistor 0402 47KΩ J 1/16W	1	R556	T2I
685	3001051040010	Chip resistor 0402 100KΩ J 1/16W	1	R557	T2I
686	3001054730000	Chip resistor 0402 47KΩ J 1/16W	1	R558	T3K
687	3001051040010	Chip resistor 0402 100KΩ J 1/16W	1	R559	T4K
688	3001051020010	Chip resistor 0402 1KΩ J 1/16W	1	R560	T2I
689	3001054730000	Chip resistor 0402 47KΩ J 1/16W	1	R561	T3K
690	3001051020010	Chip resistor 0402 1KΩ J 1/16W	1	R563	T1I
691	3001051020010	Chip resistor 0402 1KΩ J 1/16W	1	R565	T3K
692	3001051020010	Chip resistor 0402 1KΩ J 1/16W	1	R566	T3K
693	3001058220000	Chip resistor 0402 8.2KΩ J 1/16W	1	R601	T1G
694	3001051020010	Chip resistor 0402 1KΩ J 1/16W	1	R603	T2F
695	3001051010000	Chip resistor 0402 100Ω J 1/16W	1	R604	T1D
696	3244599189000	Transmission coil 4BLH(020984189)	1	T201	B3E
697	3244599189000	Transmission coil 4BLH(020984189)	1	T202	B2E
698	3102992000040	Trimmer capacitor 3.2*2.5*1.25mm 10P 55V	1	TC301	B3H
699	3102992000040	Trimmer capacitor 3.2*2.5*1.25mm 10P 55V	1	TC302	B5H
700	3003994730000	Thermistor 0603 47KΩ J 100mW	1	TH101	B5D

# TC-700 Part List 1

## TC-700 U(2) Part List1

No	P/N	Part Description	Qty	Ref. No.	Print No.	Remark
701	3003992220000	Thermistor 0603 2.2KΩ J 100mW	1	TH301	B3I	
702	3002996830000	Trimmer resistor (2*2) 68KΩ(+25%)	1	VR1	T2I	
703	3701016850010	TXCO 16.8MHz 5V	1	X301	B3I	
704	3702368630020	Crystal 3.6864MHz	1	X402	B1J	
705	3701098340010	Crystal 9.8304MHz	1	X501	T3K	
706	3802499540070	Crystal filter 49.95MHz ±7.5kHz	1	XF203	B1F	
707	3399990000080	Zener diode EDZ6.8(TE61)	1	ZD101	T4F	
708	3399990000080	Zener diode EDZ6.8(TE61)	1	ZD401	T1C	
709	3399990000080	Zener diode EDZ6.8(TE61)	1	ZD402	T1C	
710	3399990000080	Zener diode EDZ6.8(TE61)	1	ZD404	T2C	
711	3399990000080	Zener diode EDZ6.8(TE61)	1	ZD405	T1C	
712	3399990000080	Zener diode EDZ6.8(TE61)	1	ZD407	T2C	
713	4100700100500	TC-700U RF PCB FR4 1.2T/6L/4P 03	1			



## Adjustment Description

Adjust the radio by PC programming software or by manual adjustment. In manual adjustment mode, the adjustment method is shown as follows: (Refer to “Software Specification” for the manual adjustment mode)

### Required Test Instrument

Radio Communication Test Set	1 set
Scanner	1 set
3A/10V Power Supply	1 set
Digital Voltmeter	1 set
3A Ammeter	1 set

### Adjustment

#### 1. Adjustment in user mode

Firstly ground the SELF point, turn on the power by holding down TK for 2 seconds, and then the radio enters reset mode with green LED flashing twice. Turn the channel selector knob to the selected channel and press PTT, the radio data is all reset (All clone modes will be automatically activated when reset is completed). Refer to All Reset Mode in Software Specification for more details:

#### VCO

Item	Condition	Measurement		Adjustment		Specification /Remarks		
		Test Instrument	Terminal	Parts	Method			
1. Setting	Power supply voltage							
2. Transmit VCO lock voltage	1. CH: TX high	Digital Voltmeter	CV	TC301	3.9V±0.1V			
	2. TX Low			TC302	Check	>0.5V		
3. Receive VCO lock voltage	1. CH: RX high						3.9V±0.1V	
	2. RX low						Check	>0.5V

#### 2. Manual Adjust Mode Description

##### (1) Enter the manual adjust mode

Turn the power on by holding down TK and SK2 key simultaneously for 2 seconds, the radio enters manual adjust mode with red LED flashes twice. (TK: Top key; SK1: Side key1; SK2: Side key2)

##### (2) Channel number on the channel selector knob

Each channel number on the channel selector knob is defined a setting item. The bandwidth is 25 KHz and low frequency (F1) each time the channel selector knob is rotated.

**(3) SK2 key**

Used to set the frequency. 1 point tuning is used to adjust center frequency, 3 point tuning adjusts F1, F3, F5 and 5 point tuning adjusts F1-F5. The frequency toggles from low frequency to high frequency. Green LED flashes once when F1 is selected.

**(4) TK key**

Use to toggle the channel bandwidth among 25 KHz, 20 KHz and 12.5 KHz. Red LED flashes once when the bandwidth is 25 KHz.

**(5) PTT/SK1**

PTT→Increase

SK1→Decrease

PTT/SK1 is pressed to adjust upward/downward. Red LED glows indicating the maximum adjust value and green LED indicating the minimum value. Hold down the key to increase/decrease the adjust value continuously.

Press PTT key to save the BATT LOW and SQL settings, then green LED glows once.

**(6) Select adjustment item group**

The first group of adjustment item is selected when the radio enters the manual adjust mode.

Turn to CH16 and press PTT key to enter the next group. Press again to return to the first group.

Orange LED flashes once when the first group is selected. Orange LED flashes twice when the second group is selected.

**(7) Frequency Setting (can be set via programming software)**

5 point tuning (MHz) TX: { TX1, TX2, TX3, TX4, TX5}

RX: { RX1, RX2, RX3, RX4, RX5}

3 point tuning (MHz) TX: { TX1, TX3, TX5}

RX: { RX1, RX3, RX5}

1 point tuning (MHz) TX: { TX3}

RX: { RX3}

**3. Adjustment Method**

Turn the power on by holding down TK and SK2 key simultaneously for 2 seconds, the radio enters manual adjust mode with red LED flashes twice. Refer to Manual Adjust Mode in TC-700 Software Specification for more details.

**(1) Transmitter**

Item		Condition	Test Instrument	Method	Purpose
Group 1	Adjust a channel	Enter the adjust mode; Turn to CH1; TX mode.	Radio Communication Test Set; TX Test	Adjust VR1	Frequency Error ≤100Hz
	1. TX power Low	Enter the adjust mode. Turn to CH1. Adjust at 5 point (wideband).	Radio Communication Test Set  TX TEST HPF: 20HZ LPF: 300HZ	PTT key (increase) SK1 key (decrease)	Adjust power to: 1W±0.1W
	2. CDCSS balance	Enter the adjust mode. Turn to CH3. Adjust at 3 point (wideband), 1 point (medium band) and 1 point (narrowband) respectively.		PTT key (increase) SK1 key (decrease)	No adjustment
	3. CDCSS deviation	Enter the adjust mode. Turn to CH3. Adjust at 3 point (wideband), 1 point (medium band) and 1 point (narrowband) respectively.		PTT key (increase) SK1 key (decrease)	Adjust deviation to 750Hz (wideband), 600Hz (medium band) and 400Hz (narrowband) respectively.
	4. CTCSS (67.0Hz) deviation Low	Enter the adjust mode. Turn to CH4. Adjust at 3 point (wideband), 1 point (medium band) and 1 point (narrowband) respectively.		PTT key (increase) SK1 key (decrease)	
	5. CTCSS (136.5Hz) deviation Center	Enter the adjust mode. Turn to CH5. Adjust at 3 point (wideband), 1 point (medium band) and 1 point (narrowband) respectively.		PTT key (increase) SK1 key (decrease)	

Group 1	6. CTCSS (254.1Hz) deviation High	Enter the adjust mode. Turn to CH6. Adjust at 3 point (wideband), 1 point (medium band) and 1 point (narrowband) respectively.		PTT key (increase) SK1 key (decrease)	
	7. AK2346 Transmit Audio Deviation	Enter the adjust mode. Turn to CH7. Adjust at 3 point (wideband), 1 point (medium band), 1 point (narrow band).	Radio Communication Test Set HPF: 20Hz LPF: 15KHz 1KHz 120mV	PTT key (increase) SK1 key (decrease)	Adjust deviation to 4KHz (wideband), 3.2KHz (medium band) and 2KHz (narrowband) respectively.
	8. 2 Tone deviation	Enter the adjust mode. Turn to CH8. Adjust at 1 point (wideband), 1 point (medium band), 1 point (narrow band).	Radio Communication Test Set TX Test HPF: 20Hz LPF: 15KHz No modulation signal.	PTT key (increase) SK1 key (decrease)	Adjust deviation to 3.2KHz (wideband), 2.5KHz (medium band) and 1.8KHz (narrowband) respectively.
	9. DTMF deviation	Enter the adjust mode. Turn to CH9. Adjust at 1 point (wideband), 1 point (medium band), and 1 point (narrow band).		PTT key (increase) SK1 key (decrease)	Adjust deviation to 3.2KHz (wideband), 2.5KHz (medium band) and 1.8KHz (narrowband) respectively.
	10. MSK deviation	Enter the adjust mode. Turn to CH10. Adjust at 3 point (wideband), 1 point (medium band), 1 point (narrow band).		PTT key (increase) SK1 key (decrease)	Adjust deviation to 3.2KHz (wideband), 2.5KHz (medium band) and 1.8KHz (narrowband) respectively.

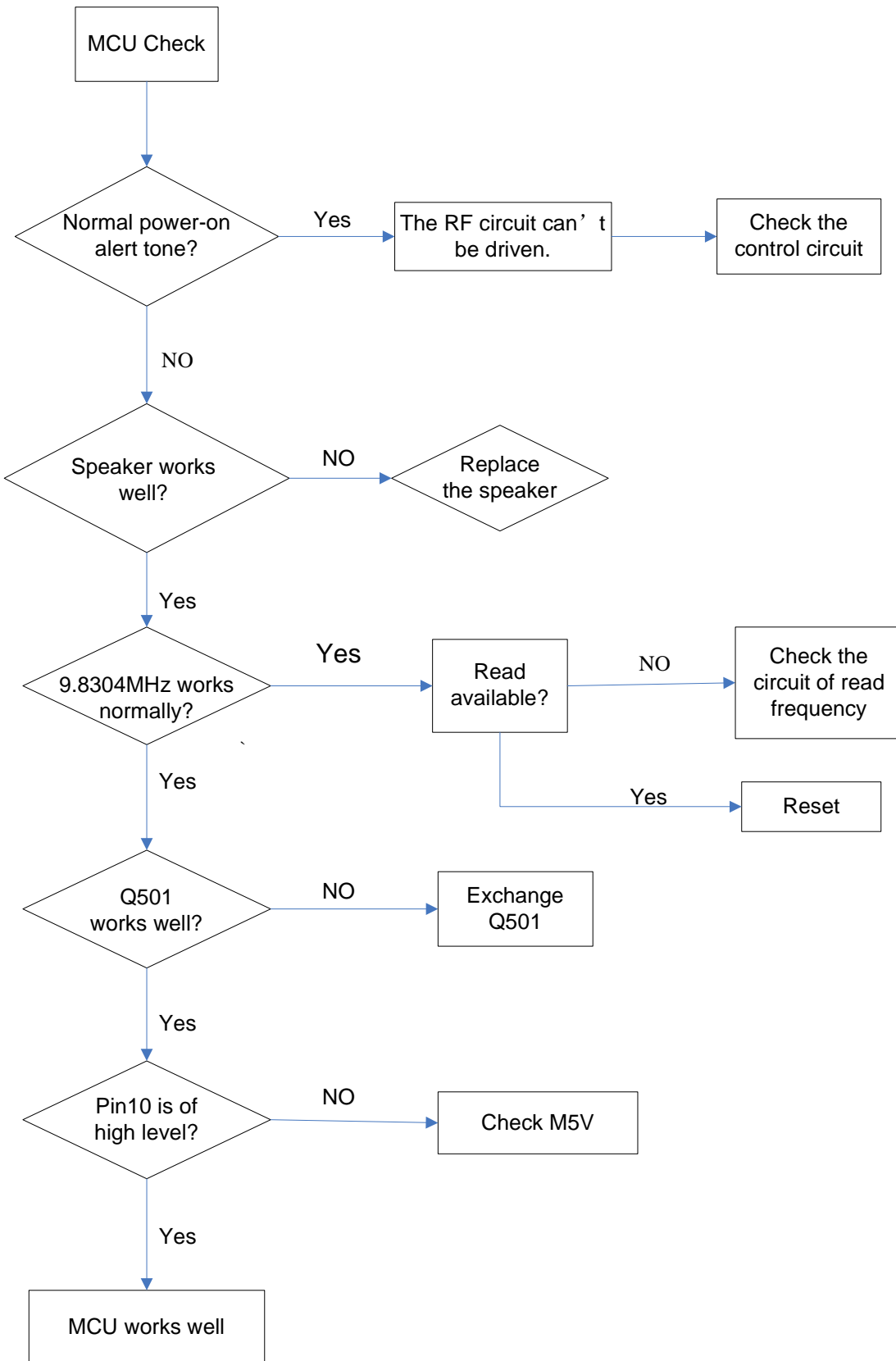
Group 1	11. TX power HIGH	Enter the adjust mode. Turn to CH13. Adjust at 5 point (wideband).	Radio Communication Test Set TX TEST	PTT key (increase) SK1 key (decrease)	Adjust power to 5W(4W)±0.1W VHF: 5W, UHF: 4W
	12. TX voltage Low	Enter the adjust mode. Turn to CH14. Adjust at 1 point (wideband).		Save	Adjust voltage to 5.8V,press PTT to save

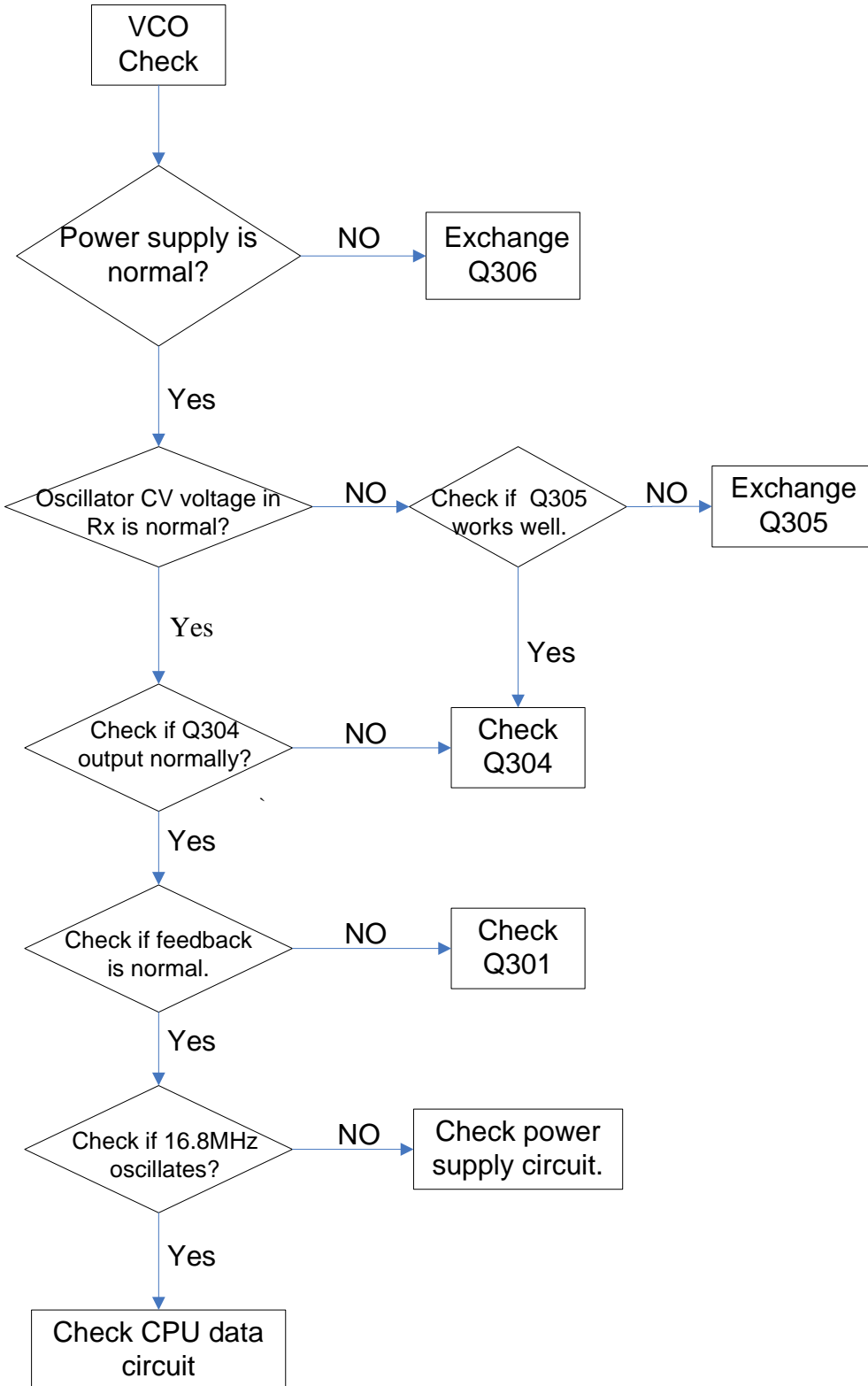
**Receiver**

Item		Condition	Test Instrument	Method	Purpose
Group 2	1. RX sensitivity	Enter the adjust mode. Turn to CH1. Adjust at 5 point (wideband).	Radio Communication Test Set RX TEST HPF: 300HZ LPF: 3KHZ	PTT key SK1 key	Adjust level to 119dBm. SINAD≥12dB
	2. AK2346 RX volume	Enter the adjust mode. Turn to CH2. Adjust 1 point at wideband, medium band and narrowband respectively.		PTT key (Increase) SK1 key (Decrease)	When Max. volume is set, adjust AC level to 1W (16Ω), single input 2.5V, dual input 5V
	3. Squelch Level 3 (OPEN)	Enter the adjust mode. Turn to CH3. Adjust at 5 point (wideband), 1 point (medium band) and 1 point (narrowband) respectively.		Save	Adjust level to -123dBm, press PTT to save
	4. Squelch Level 3 (SQUELCH)	Enter the adjust mode. Turn to CH4. Adjust at 5 point (wideband), 1 point (medium band) and 1 point (narrowband) respectively.		Save	Adjust level to -125dBm, press PTT to save
	5. Squelch Level 9 (OPEN)	Enter the adjust mode. Turn to CH5. Adjust at 5 point (wideband), 1 point (medium band) and 1 point (narrowband) respectively.		Save	Adjust level to -117dBm, press PTT to save
	6. Squelch Level 9 (SQUELCH)	Enter the adjust mode. Turn to CH6. Adjust at 5 point (wideband), 1 point (medium band) and 1 point (narrowband) respectively.		Save	Adjust level to -119dBm, press PTT to save
	7. RX voltage Low	Enter the adjust mode. Turn to CH7. Adjust at 1 point (wideband).		Save	Adjust power supply voltage to 6.3V, press PTT to save

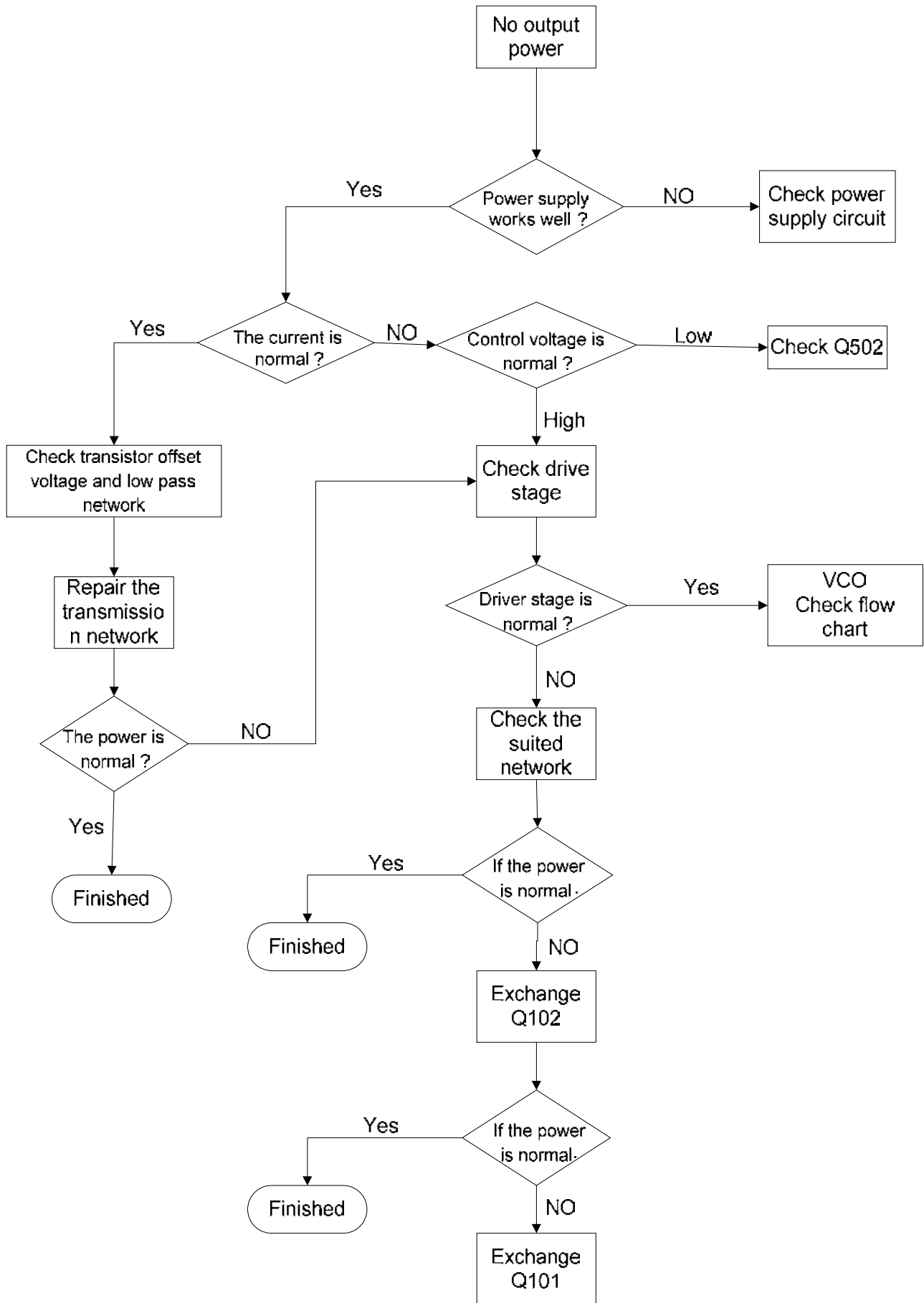
Note: AF deviation of the receiver is 3KHz (wideband), 2.5KHz(medium band) and 1.5KHz (narrowband)

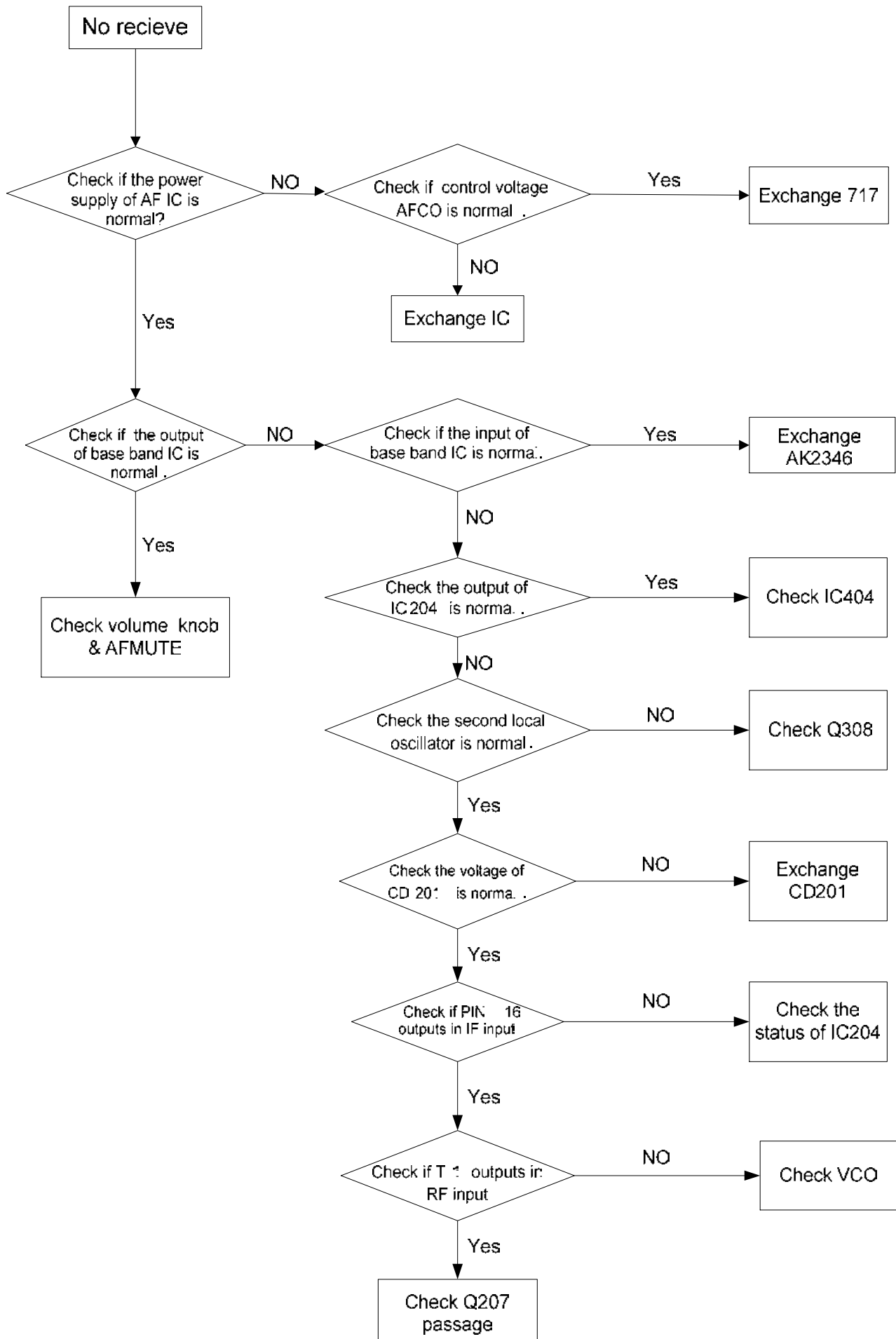
**Trouble-shooting Chart**











## Disassembly and Assembly for Repair

### 1. Remove the case assembly from the chassis (as shown in Fig. 1)

1. Remove the volume knob and channel knob ①.
2. Remove the two screws ②.
3. Lift the both sides of chassis from the case assembly ③.

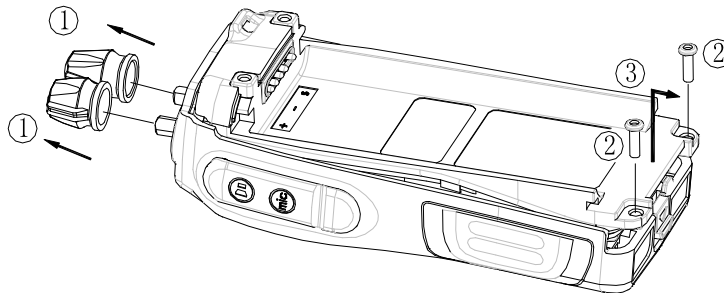


Fig. 1

### 2. Remove the speaker (as shown in Fig. 2)

1. Remove the three screws on the fixing ring of the speaker ④ and take out the fixing ring ⑤.  
Note: be careful not to snap the speaker's lead wire.
2. Take out the speaker and water-proof gasket ⑥.

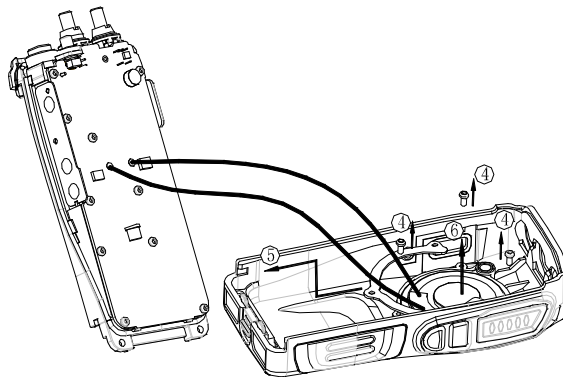


Fig. 2

### 3. Removing the Tx-Rx unit from the chassis (as shown in Fig. 3)

1. Loosen the nut on channel switch ⑦ and that on volume switch ⑧, and remove earphone holder ⑨.
2. Remove the screw ⑩ on the PTT key board.
3. Remove the ten screws ⑪ fixing the control board.
4. Remove the solder of the antenna terminal with a soldering iron ⑫.

5. Remove the solder of the positive and negative terminal on the battery's connector with a soldering iron (13).
6. Lift and remove the main unit board (14) from the chassis.

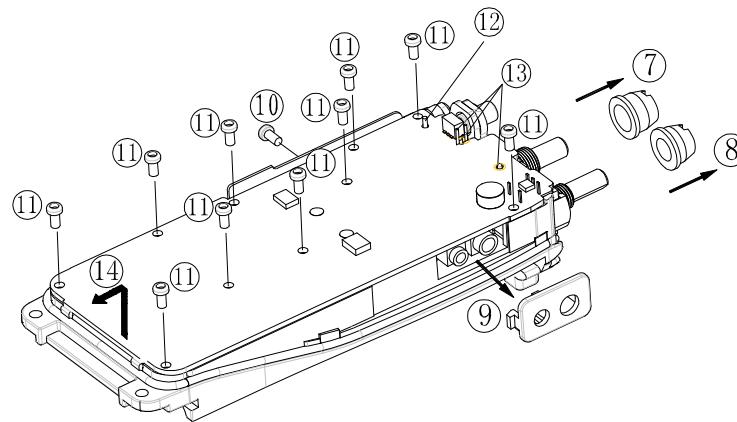


Fig. 3

**Cautions for assembly:**

**4. Attaching the case assembly and chassis (as shown in Fig. 4, 5 & 6)**

1. Make sure the water-proof packing attached to the circumference of the chassis is securely inserted in the groove of the chassis ①.
2. Attach speaker and its water-proof ring to the corresponding place on the chassis ②.

**Note:** ensure the speaker and the ring is securely inserted.

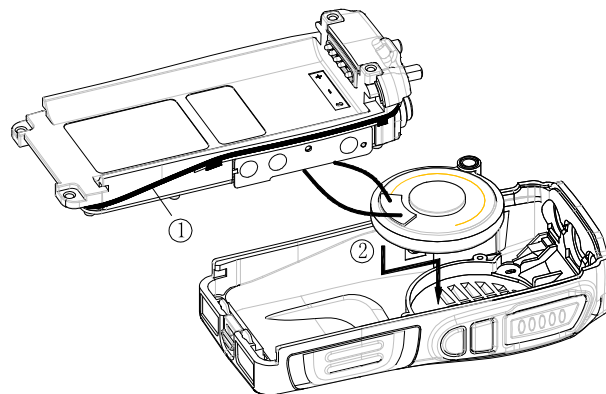


Fig. 4

3. Press the stainless fixing ring on the water-proof packing of the speaker, and attach the screw ③.
4. Insert the upper part of the chassis into the case assembly ④.  
**Note:** Make sure the speaker lead wire does not press on the microphone magnetic core.
5. Press downward the chassis ⑤, enabling the chassis and the case to fit together.  
**Note:** If the packing of the SP/MIC does not come to the correct position after attaching the chassis to the case assembly, reposition the packing with your fingers.

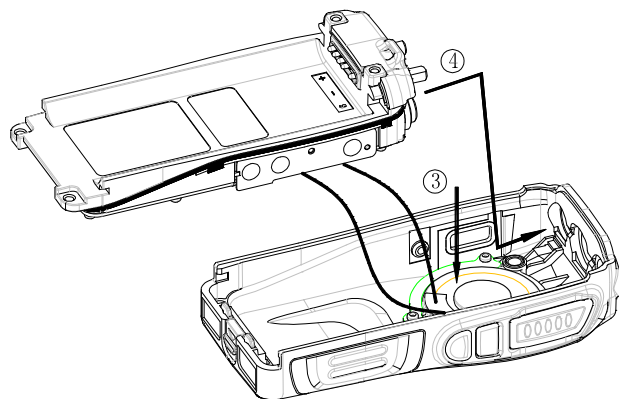


Fig. 5

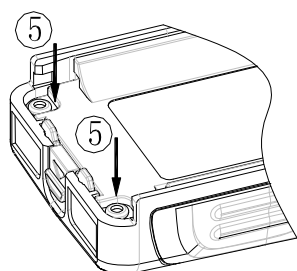
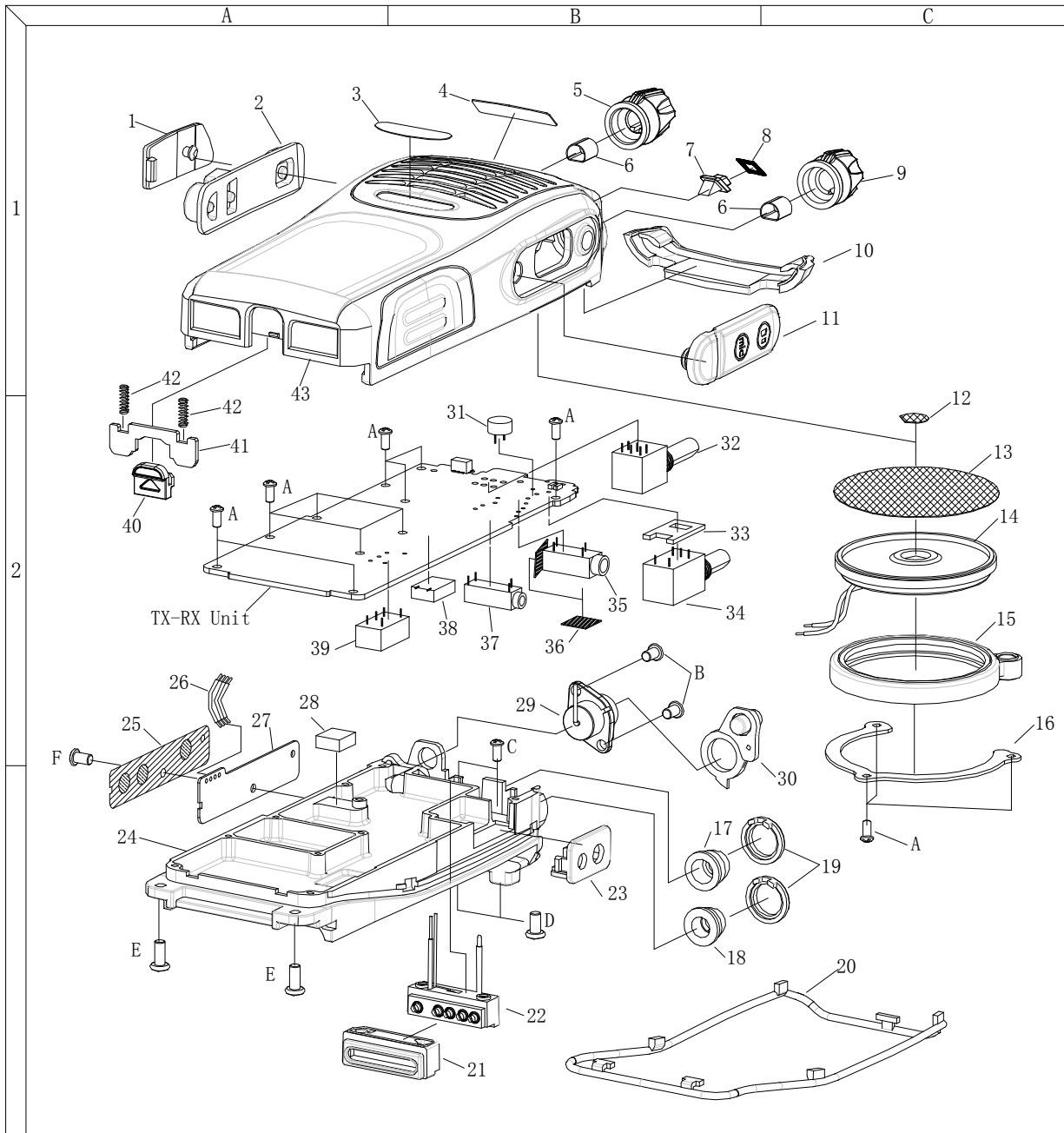


Fig. 6

**Exploded View**



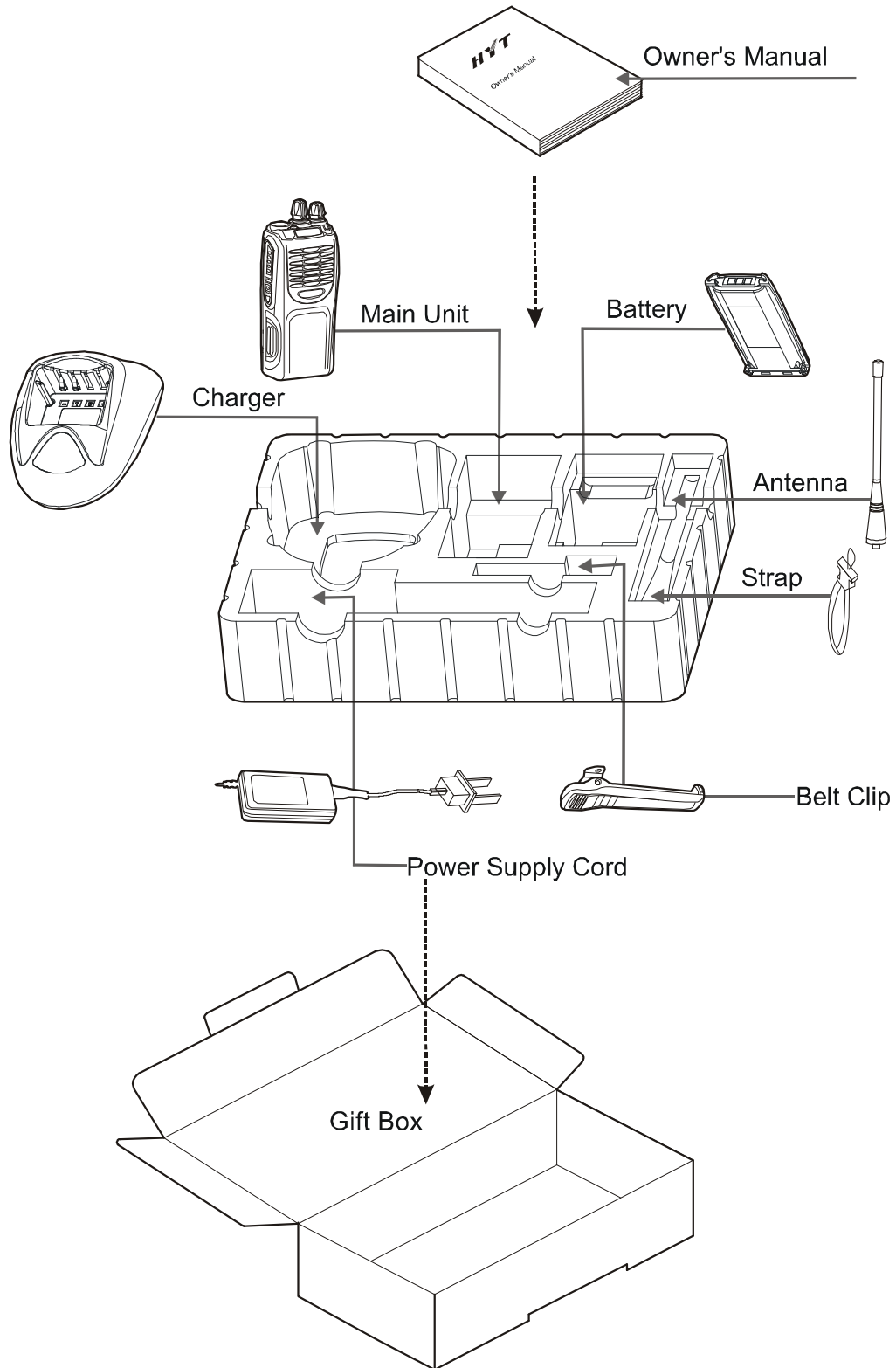
**TC-700 Part List 2**

No.	P/N	Part Description	Qty
1	6000135000000	TC-700S PTT key cover Black	1.00
2	6100068000000	TC-700S PTT silica rubber key Black	1.00
3	8600700500000	TC-700 Model label	1.00
4	8600700500100	HYT-LOGO Logo	1.00
5	6000076000020	TC700 Knob (encoder)	1.00
6	6201006000000	TC2088 Inner liner knob	2.00
7	6000136000000	TC-700S Light guide	1.00
8	750700S000000	TC700S Light guide 3M (9448) adhesive paper	1.00
9	6000077000020	TC700 Knob (volume)	1.00
10	6000134000000	TC-700S Rear cover (main unit)	1.00
11	6000138000000	TC-700S Dust-proof cover	1.00
12	7400051000000	TC700S Mic mesh	1.00
13	7400054000000	Speaker mesh	1.00
14	5001040000000	Speaker 16Ω 1W D: 40mm	1.00
15	6100066000000	TC-700S Water-proof gasket (speaker)	1.00
16	6201078000000	TC-700S Stainless fixing ring (speaker)	1.00
17	7207005400000	Nut M7.0*5.4mm	1.00
18	7206004200000	Nut M6.0*4.2mm	1.00
19	6100069000000	TC-700S Water-proof gasket (volume knob)	2.00
20	6100065000000	TC-700S Water-proof gasket (main unit)	1.00
21	6100070000000	TC-700S Water-proof gasket (battery connector)	1.00
22	5202003100010	TC-700S 3P battery connector socket	1.00
23	6000137000000	TC-700S Mic holder Black	1.00
24	6300016000000	TC-700S Aluminum chassis	1.00
25	7300001000000	TC700S PTT metal dome (3-key)	1.00
26	4210047000000	TC-700 Key board connection cable 47mm	0.50
27	4100700101100	TC-700S PT PCB FR4 0.6T/2L	1.00
28	7500114000000	TC500 Gap pad	1.00
29	4400000000000	SMA-type MSMA1551D5-001-NT3G-50 connector Male	1.00
30	6100067000000	TC-700S Antenna water-proof gasket	1.00
31	5002110000020	Mic cover CZII-T6027P-C33 -60dB±3dB φ6.0*2.27	1.00
32	4304030000010	Gray-code encoder switch	1.00
33	7500044000000	TC700 Volume switch pad 1.0mm-thick	1.00
34	4302020000040	Volume switch TC3000 TP76N17N 15F(A103)	1.00
35	5205000000280	Speaker jack HSJ1456-010320	1.00
36	7400023000010	TC-500 PVC sheet 0.2mm-thick	2.00
37	5205000000190	Earpiece jack HSJ1650-010020	1.00
38	3920450300000	Demodulator plug-in 450KHz±4kHz	1.00

39	3801045030090	Ceramic filter 450KHz±6.0KHz	1.00
40	6000128000000	TC-700 Battery latch Black	1.00
41	6201078000000	TC-700S Battery latch baffle 1.2mmSUS304	1.00
42	7000036000000	TC-700S Spring $\Phi 0.35 \times \Phi 2.3 \times 10\text{mm}$	2.00
43	6000133000000	TC-700S Main unit front case Black	1.00
A	7101904020020	Self-tapping ST1.9*4.0mm	13.00
B	7102504000300	Machine screw M2.5*4.0mm Ultra-thin cross-head	2.00
C	7102004520000	Self-tapping ST2.0*4.5mm pan head	2.00
D	7103006001000	Machine screw M3.0*6.0mm pan head	2.00
E	7102508000000	Machine screw M2.5*8.0mm Hex wobbler	2.00
F	7102004020050	Self-tapping ST2.0*4.0mm cross recessed pan head	1.00



**Packing**



## Description of TC-700 Desktop Charger

### I . General Description

The charger is developed & designed for TC-700 wireless series. The charger adopts bq2000T—a programmable multi-chemistry fast-charge management IC.

The charger is for fast-charge management of nickel cadmium (Ni-Cd), nickel metal-hydride (Ni-MH), or lithium-ion (Li-Ion) batteries in single or multi-chemistry applications.

High-frequency switching controller for efficient and simple charge design, provides over 90% efficiency rating.

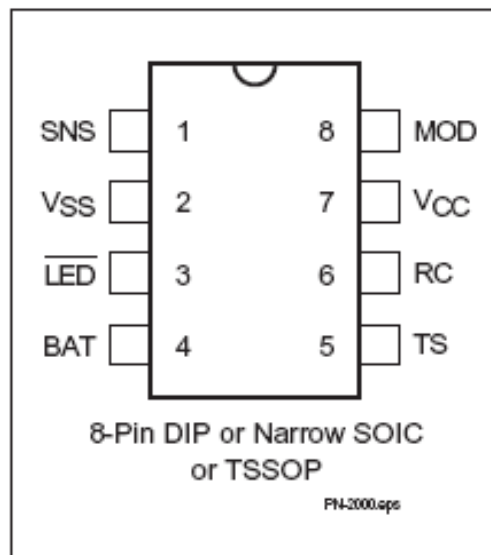
### II . General description of bq2000T functions

The bq2000T detects the battery chemistry and proceeds with the optional charging and termination algorithms. This process eliminates undesirable undercharged or overcharged conditions and allows accurate and safe termination of fast charge.

Depending on the chemistry, the bq2000T provides a number of charge termination criteria:

- Peak voltage detection (PVD) (for NiCd and NiMH)
- Minimum charging current (for Li-Ion)
- Maximum temperature
- Maximum charge time

### Pin Connections



**Pin Names and Descriptions:****SNS:** Current-sense input

Enables the bq2000T to sense the battery current via the voltage developed on this pin by an external sense-resistor connected in series with the battery pack.

**Vss:** System ground**LED:** Charge-status output

Open-drain output that indicates the charging status by turning on, turning off, or flashing an external LED.

**BAT:** Battery-voltage input

Battery-voltage sense input. A simple resistive divider, across the battery terminals, generates this input.

**TS:** Temperature-sense input

Input for an external battery-temperature monitoring circuit. An external resistive divider network with a negative temperature-coefficient thermistor sets the lower and upper temperature thresholds.

**RC:** Timer-program input

RC input used to program the maximum charge-time, hold-off period, and trickle rate during the charge cycle, and to disable or enable top-off charge.

**Vcc:** Supply-voltage input**MOD:** Modulation-control output

Push-pull output that controls the charging current to the battery. MOD switches high to enable charging current to flow and low to inhibit charging current flow.

## Charge Termination

### 1. Maximum Charge Time (NiCd, NiMH, and Li-Ion)

The bq2000T sets the maximum charge-time through pin RC. With the proper selection of external resistor and capacitor, various time-out values may be achieved. Figure II shows a typical connection.

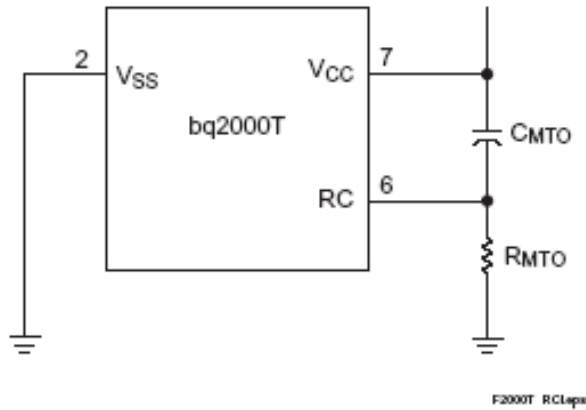


Figure II Typical Connection for the RC Input

### 2. Maximum Temperature (NiCd, NiMH, and Li-Ion)

During fast charge, the bq2000T compares the battery temperature to an internal high-temperature cutoff threshold,  $V_{TCO}$ . As shown in Figure III, high-temperature termination occurs when voltage at pin TS is less than this threshold.

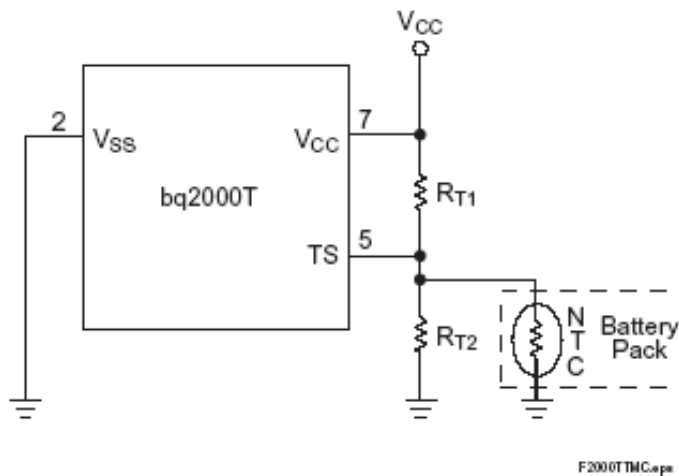


Figure III Temperature Monitoring Configuration

### 3. Peak Voltage Detection (Ni-Cd, Ni-MH battery) (PVD)

bq2000T adopts PVD method to stop the charging of Ni-Cd and Ni-MH batteries. It continuously samples the voltage of BAT pin which reflects the voltage of the whole battery. Bq2000T begins PVD function if this voltage is less than the maximum sampling voltage 3.8mv (PVD). As shown in Fig. IV, the resistor-divider between the anode of the battery clip and Vss pin determines the voltage of BAT pin.

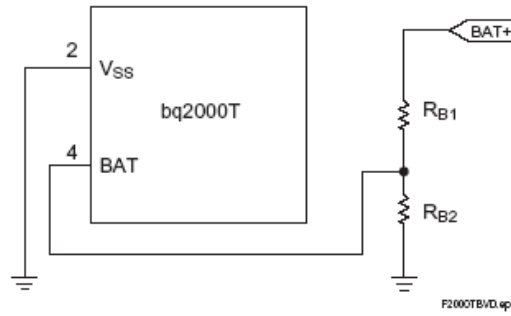


Figure IV Battery Voltage Divider

For Li-Ion battery packs, the resistor values  $R_{B1}$  and  $R_{B2}$  are calculated by the following equation:

$$\frac{R_{B1}}{R_{B2}} = \left( N * \frac{V_{CELL}}{V_{MCV}} \right) - 1$$

Where N is the number of cells in series. The end-to-end input impedance of this resistive divider network should be at least 200KΩ and no more than 1MΩ.

A NiCd or NiMH battery pack consisting of N series-cells may benefit by the selection of the  $R_{B1}$  value to be N-1 times larger than the  $R_{B2}$  value.

In a mixed-chemistry design, a common voltage divider is used as long as the maximum charge voltage of the nickel-based pack is below that of the Li-Ion pack. Otherwise, different scaling is required.

#### 4. Charge Current Control

The bq2000T controls the charge current through the MOD output pin. The current-control circuit supports a switching-current regulator with frequencies up to 500kHz. The bq2000T monitors charge current at the SNS input by the voltage drop across a sense-resistor,  $R_{SNS}$ , in series with the battery pack. See Figure V for a typical current-sensing circuit.  $R_{SNS}$  is sized to provide the desired fast-charge current ( $I_{MAX}$ ).

If the voltage at the SNS is lower than  $V_{SNSLO}$  or higher than  $V_{SNSHI}$ , the bq2000T switches the MOD output high to pass charge current to the battery. When the SNS voltage is less than  $V_{SNSL}$  or greater than  $V_{SNSHI}$ , the bq2000T switches the MOD output low to shut off charging current to the battery.

$$I_{MAX} = \frac{0.05}{R_{SNS}}$$

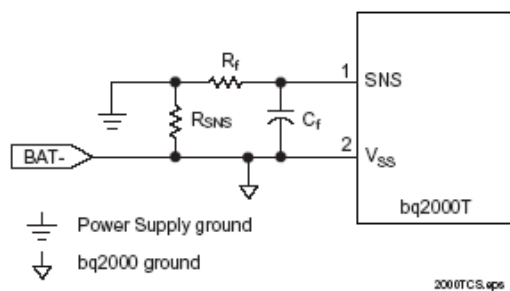


Figure V Current-Sensing Circuit

### **III. Specifications**

#### **1. Output voltage and current**

Input:  $12 \pm 3V$  1000mA

Output: 8-12V 20~1000mA

(Input: 12V 1000mA DC

Output: 800mA DC)

#### **2. Charging current**

##### 1) Li-ion battery

Fast charging current:  $800 \pm 200mA$

Minimum charging current:  $75 \pm 20mA$

##### 2) Ni-MH battery

Fast charging current:  $850 \pm 100 mA$

Supplementary charging current:  $65 \pm 10mA$

Trickle charging current: 25~35mA

### **IV. Charging process and indicator**

#### **1. Li-ion battery**

- 1) Constant-current charging: charging current is  $800 \pm 200mA$  and the indicator turns red. The battery switches to constant voltage charging when the voltage rises to  $8.4 \pm 0.1V$ .
- 2) Constant voltage charging: with  $8.4 \pm 0.1V$  voltage and indicator turns red.
- 3) Completed: battery voltage:  $8.4 \pm 0.1V$ ; the minimum charging current drops to  $75 \pm 20mA$ ; LED indicator turns green.

#### **2. Ni-MH battery**

- 1) Fast charge: current:  $850 \pm 100mA$ ; LED indicator: red; switch to supplementary charging when rate of temperature rise  $dT/dt=0.9 \sim 1/min$  or the temperature rises to  $50^{\circ}C$ .
- 2) Supplementary charging: charging current:  $65 \pm 10mA$ ; LED indicator: green; switch to trickle charging if the supplementary charging time reaches or exceeds MTO.
- 3) Trickle charging: charging current: 25~35mA; LED indicator: green.Specifications

## Specifications

<b>General</b>	
Frequency Range	VHF: 136-174MHz UHF:300-350MHz,350-390MHz, 400-450MHz, 420-470MHz 440-490MHz,470-520MHz
Number of Channels	16
Channel Spacing	25 /20/12.5 KHz
Operating Voltage	7.4 V
Battery Life	About 14 hours (5-5-90 duty cycle)
Operating Temperature Range	-30℃ — +60℃
Dimensions and Weight	119 mm×54mm×34mm、 315 g
<b>Receiver</b>	
Reference Sensitivity	0.25/0.35 μV
Adjacent Channel Selectivity	70/60dB
Intermodulation Rejection	65dB
Spurious Response	70dB
Audio Power Output	1W
Frequency Stability	±2.5 ppm
<b>Transmitter</b>	
RF Power Output	5W/2W/1W (VHF) 4W/2W/1W (UHF)
Spurious and Harmonics	-36dBm<1GHz -30dBm>1GHz
Modulation Limitation	± 5/4/3kHz
FM Noise	45/40dB
Audio Distortion	≤5%
Frequency Stability	±2.5 ppm

The specifications are tested according to EIA-603 and are subject to change without notice due to enhancement in technology.