



## WARNING

Thank you for purchasing a Sensor Espio™ swimming pool alarm.  
This swimming pool alarm complies with the NF P90-307/AI French standard.

Sensor Espio™ is not intended as a substitute for the watchfulness of parents and/or responsible adults, which remains the essential factor for the protection of children under the age of five.

This alarm is a protective device which signals a danger (or danger risk). A responsible adult must take quick action within 3 minutes after the alarm triggers. “Responsible adult” means an adult person who is aware of the danger, who can swim, and who is capable of giving help in the pool.

In no event can your retailer or the manufacturer of the alarm system be held responsible for any person or animal falling or drowning. In no event must the installation of your alarm system reduce your vigilance or replace active monitoring of the swimming pool and the area around it.

Check that the Sensor Espio™ siren can be heard from inside your home.  
You must always check that the alarm can be heard from the residence/living quarters. Depending on the layout of the residence/living quarters in relation to the swimming pool, it may be necessary to move the safety, alarm and failure signals so they can be heard from the dwelling/living quarters. This must be checked during installation. Should it be necessary to supplement your immersion detector with a remote siren, fit in a Sensor Domo™ remote sound alarm. **CONTACT YOUR RETAILER FOR ADVICE.**

Regularly check the water level in your pool, especially when the weather is very hot, or rainy, or if it has been windy for several days. The immersion level must imperatively be as recommended). If this instruction is not complied with, your fall detector will not work properly

Warning must be given that the pool and surrounding area are under electronic surveillance.

The remote control and magnet must imperatively be kept out of the reach of children.

The performance as defined in standard NF P90-307/AI is not guaranteed beyond wind levels greater than those specified in this standard.

---



## CONTENTS

<b>Contents of the package</b> .....	<b>2</b>
<b>How does Sensor Espio™ work ?</b> .....	<b>3</b>
<b>Installing Sensor Espio™</b> .....	<b>4</b>
<b>Precautions for use</b> .....	<b>4</b>
<b>Tools required</b> .....	<b>5</b>
<b>a) inserting the batteries</b> .....	<b>6</b>
<b>b) choice of location</b> .....	<b>7</b>
<b>c) existing pool: set up of the attachment and temporary installation</b> .....	<b>8</b>
<b>c') pool under construction: set up of the attachment and temporary installation</b> ..	<b>9</b>
<b>d) installation tests</b> .....	<b>10</b>
<b>e) existing pool: final attachment of Sensor Espio™</b> .....	<b>12</b>
<b>e') pool under construction: final attachment of Sensor Espio™</b> .....	<b>15</b>
<b>f) validation tests</b> .....	<b>17</b>
<b>Using Sensor Espio™</b> .....	<b>19</b>
<b>Precautions for use</b> .....	<b>19</b>
<b>Daily use</b> .....	<b>20</b>
<b>Wind Mode</b> .....	<b>22</b>
<b>Using the magnet</b> .....	<b>22</b>
<b>Other functions</b> .....	<b>23</b>
<b>Replacing the batterie</b> .....	<b>24</b>
<b>Replacing the remote control battery</b> .....	<b>27</b>
<b>I have a problem with my fall detector</b> .....	<b>28</b>
<b>Frequently asked questions</b> .....	<b>29</b>
<b>Safety advices related to the alarm</b> .....	<b>30</b>
<b>Monthly tests</b> .....	<b>35</b>

---

**This guide allows you to:**

- understand Sensor Espio™'s working principle;
- place and fasten Sensor Espio™ according to your pool characteristics;
- carry out periodical tests with Sensor Espio™.

In order to benefit from the warranty related to your pool alarm, carry out the monthly tests mentioned on the validation sheet included. Complete, sign and return this testing sheet to the manufacturer, within the 7 days following the purchase of your fall detector in the T envelope provided for this purpose. In case of negligence or if testing sheet is not collected, Sensor Espio™'s warranty won't be effective.

## Contents of the package



Despite the careful attention we pay to the quality of our products and their packaging, we ask you to check its contents.

- 1 Sensor Espio™ (1)
- 4 alkaline batteries LR20 1,5V(2)
- 1 “existing pool” attachment support (3)
- 1 “pool under construction” attachment support (4)
- 1 “existing pool” rubber protection (5)
- 1 fastening kit (screws, rawplugs, front screw cover, magnet key-rings, wedge, wedging foam pad) (6)
- 1 remote control (battery included - 3V DL2032) (7)
- 1 conformity declaration sheet
- 1 test validation sheet for the guarantee
- The terms of guarantee at the end of this guide
- 1 Sensor Domo (if selected)





## How does Sensor Espio™ work?

Thanks to its embarked technology, Sensor Espio™ monitors permanently the pool. In case of an immersion or a fall in the pool, Sensor Espio™ sets off its powerful siren (according to option).

You must switch Sensor Espio™ to disarmed mode before swimming. After swimming Sensor Espio™ automatically switches to armed mode as soon as the pool is still enough (see “using Sensor Espio™” p.19)

## Sensor Espio™ main signals

Principles :

<b>Status</b>	<b>Signal</b>	
	<b>sound /</b>	<b>visual</b>
<b>ARMED</b> Sensor Espio™ monitors the pool	1 long high-pitched beep after pressing the grey button of the remote	
<b>DISARMED</b> Sensor Espio™ doesn't monitor the pool	5 short high-pitched beeps after maintaining pressure on the red and the grey button	
Sensor Espio™ is in re-activation phase	1 short high-pitched beep after pressing the grey button	
Sensor Espio™ is in OFF mode	15 high-pitched beeps (see p.23)	 tous voyants éteints
Sensor Espio™ exits test mode	Specific tone (see p.23)	—

Failure signals :

<b>Status</b>	<b>Sound signal</b>	
	<b>With remote control</b>	<b>Periodic</b>
<b>Batteries low</b>	4 short, low-pitched beeps	1 short, low-pitched beep every minute
<b>Malfunction</b> Return to the after-sales service	—	2 short, low-pitched beeps every minute

## Installing Sensor Espio™

### INSTALLATION PRECAUTIONS

**Make absolutely sure that Sensor Espio™ is vertical when handled, with the battery compartment down.**

If the device is turned upside down, with the battery compartment up, or if it is dropped in the swimming pool during handling, you must imperatively allow it to dry with the battery compartment down for at least 1 hour, and then check that it is working properly.

This alarm system is only suited to swimming pools meeting the two following conditions at the location of the alarm system:

- a water depth of 60cm minimum.
- a distance between the underside of the coping and the waterline between 8,5 and 20 cm.

Make sure that the water of your pool is clear and pure before installing your device.

For bigger distances, use a specific Sensor Espio™ extension.

**Ask your retailer for advice.**

You are reminded that the French act No 2003-9 dated 3 January 2003 on swimming pool safety requires that a device be installed permanently throughout the year. Your retailer or MG International cannot be held liable in the event of drowning after the removal or complete stopping of your alarm system for whatever reason.

Should you restart your alarm system after a long period, perform the tests described in page 17. **In case of a problem, contact your retailer immediately.**

The only authorized operation on the device once it is installed is changing the battery.

Do not use an electric drill to install your device.

Some robot cleaners of the diving robot type are incompatible with fall detection systems.

Results defined in the NF P90-307/A1 Standard are not guaranteed with winds higher than those described in that standard.

During the first 30 minutes, after the first activation of your device with the remote control, you are in « Test mode ». For more information on this mode, please see page 23.


## Tools required for installation:

- 1 Pozi screwdriver
- 1 drill with concrete bit Ø8mm
- 4 1,5-litre bottles
- 1 cutter
- 1 pen
- 1 tape measure

Your fall detector must be installed in calm weather on a still pool.

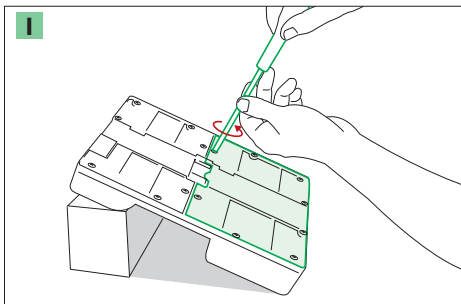
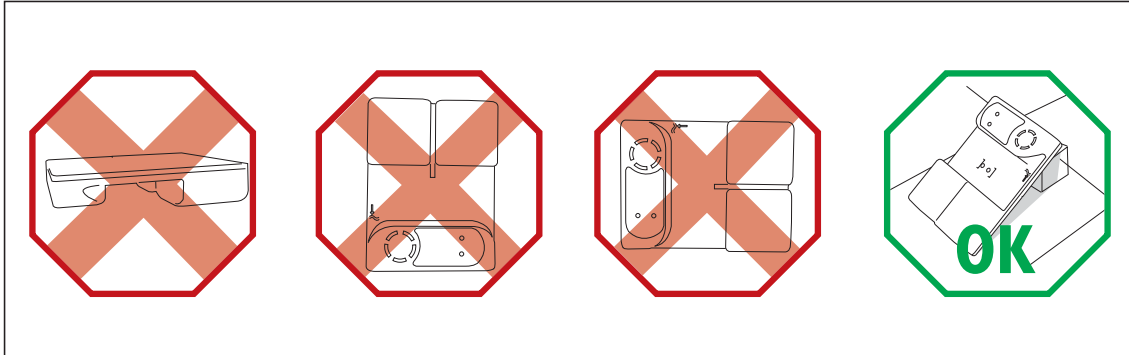
The installation of Sensor Espio™ is done in 6 steps:

- a) inserting the batteries
- b) choice of location
- c) existing pool: set up of the attachment and temporary installation  
or
- c') pool under construction: set up of the attachment and temporary installation
- d) Installation tests
- e) Existing pool: final attachment of Sensor Espio™  
or
- e') Pool under construction: final attachment of Sensor Espio™
- f) Validation tests.

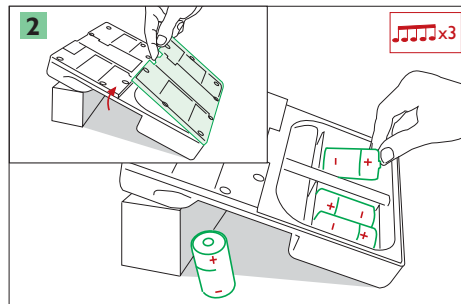
 The pool water must be clear and clean.

**a) inserting the batteries**

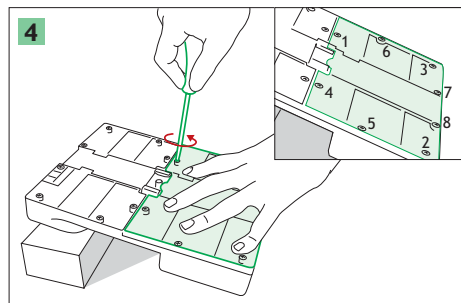
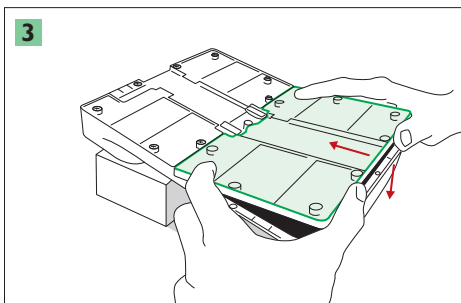
**!** Make absolutely sure that Sensor Espio™ is vertical when handled, with the battery compartment down.



**1** Place Sensor Espio™ on a prop, as shown. Unscrew the battery compartment screws.



**2** Make sure the polarity is respected. Validation sound signal.



**3** To ensure waterproofing, start by pressing the seal on the superior inner wall of the cover, then shut the top down and keep pressing on it. Screw according to the tightening sequence given.

**!** Sensor Espio™ is in complete stop (see page 23)

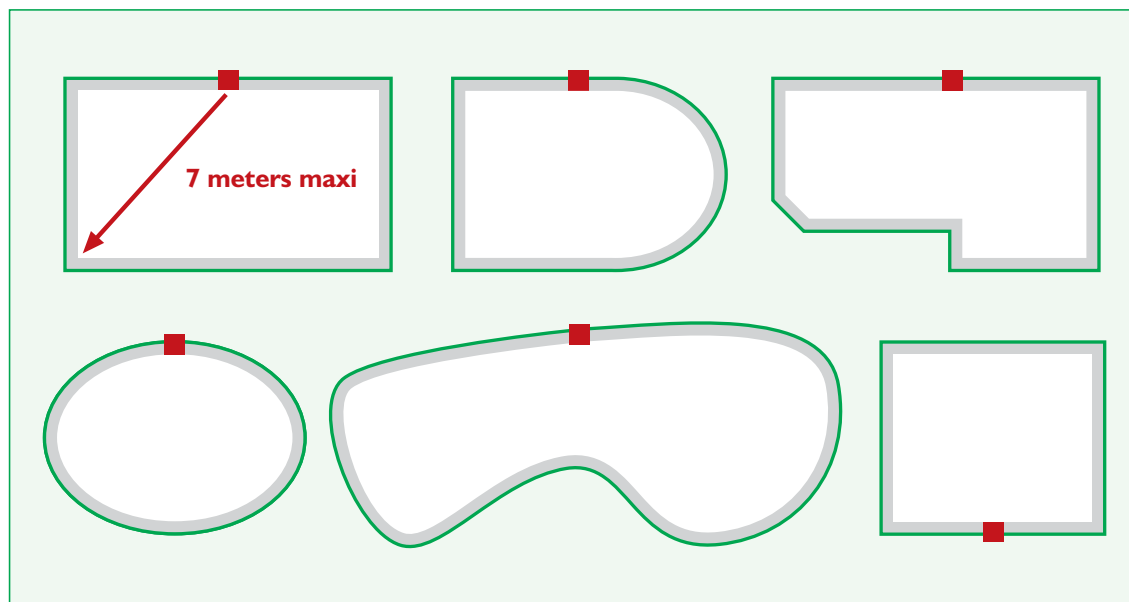
## b) choice of location

Sensor Espio™ must be positioned in the centre of the long side (position recommended for rectangular swimming pools) and against a flat wall in your pool. If your pool does not correspond to the configurations shown below, **ask your retailer for advice.**

- ❗ **Ensure that the central unit is more than one meter away from the filtration system (return fittings, waste plug, skimmer, vacuum fittings, etc.) or waterfall or any other device that may disturb the pool at this place.**

- ❗ Your immersion detector has been designed and configured in compliance with the NF P90-307/A1 standard, and can be used in pools with maximum dimensions of 10 x 5 meters. Your immersion detector must not be further than 7 meters from all possible fall locations.

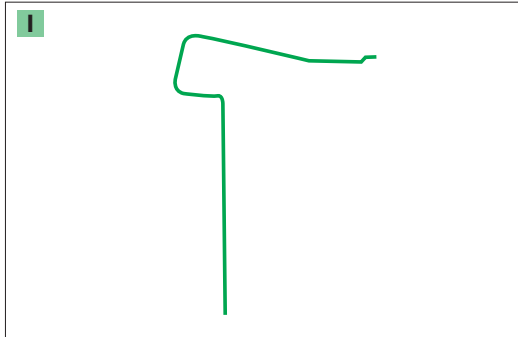
In the case of a larger swimming pool, or one that is of a particular shape, **ask your retailer for advice.**



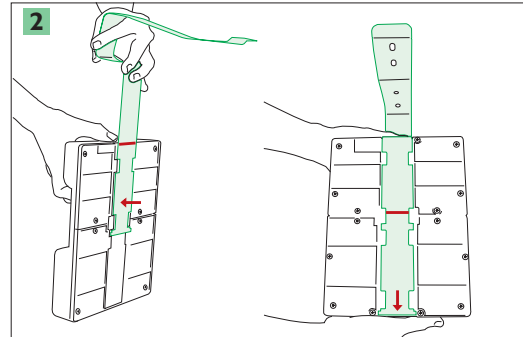


**c) existing pool: set up of the attachment and temporary installation.**

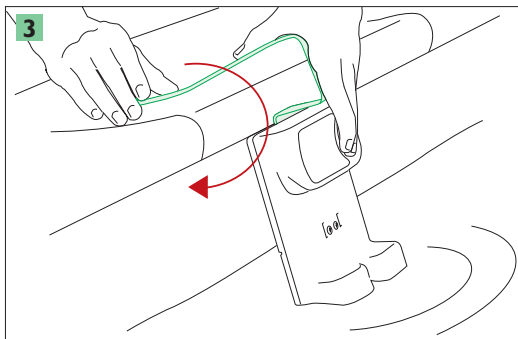
**!** Make absolutely sure that Sensor Espio™ is vertical when handled, with the battery compartment down.



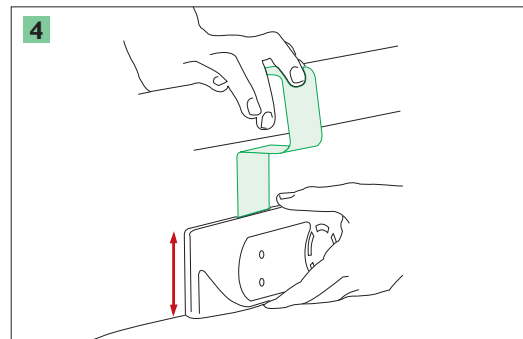
**1**  
Attachment support suitable for coping on existing pool.



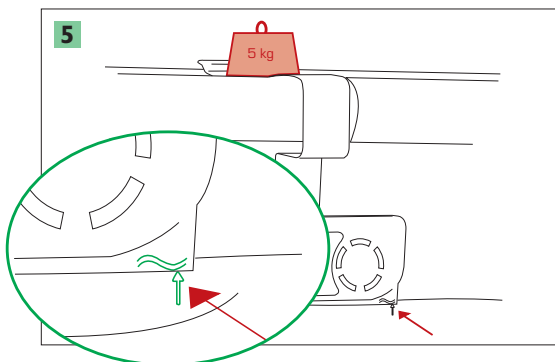
**2**  
Position the attachment on the line and slide it down to the stop.



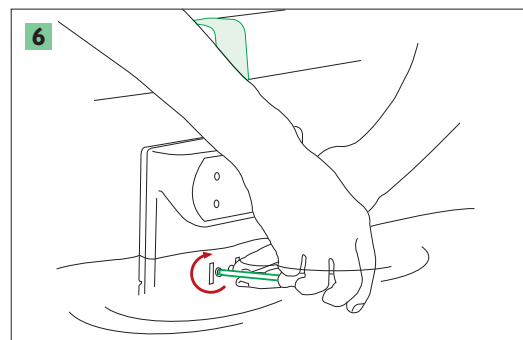
**3**  
Sensor Espio™ must be fully flat against the wall. Adjust the attachment support if need be. If there is a gap between the attachment support and the coping, put the wedging foam pad in it (cut it down to size if need be).



**4**  
Slide Sensor Espio™ on its support in order to make absolutely sure that the water level is on the level mark.



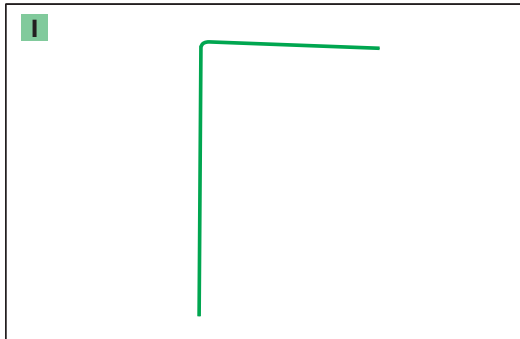
**5**  
Immersion level mark.



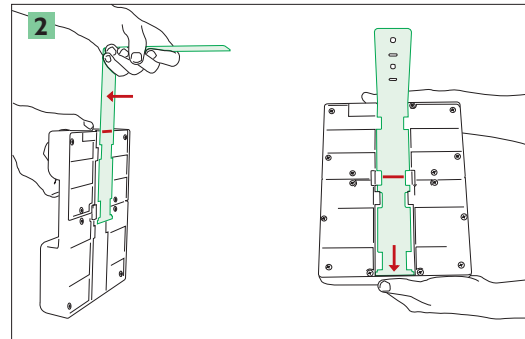
**6**  
Tighten gently in order to maintain Sensor Espio™ on its support.

**c') pool under construction: set up of the attachment and temporary installation**

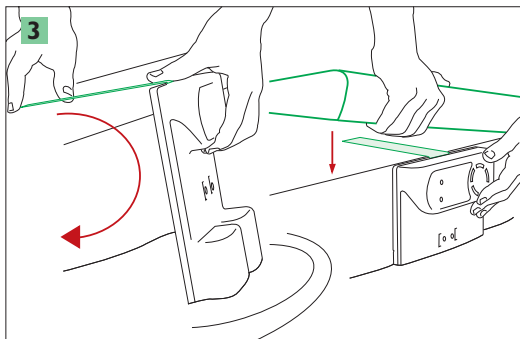
**!** Make absolutely sure that Sensor Espio™ is vertical when handled, with the battery compartment down.



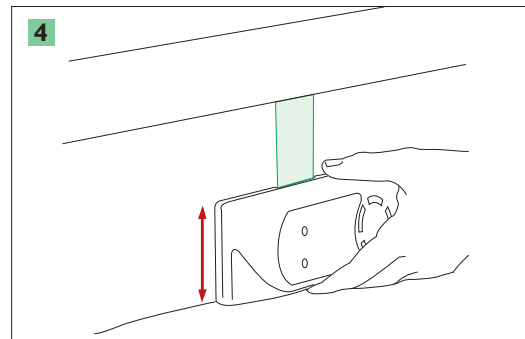
Attachment support suitable for coping on pool under construction.



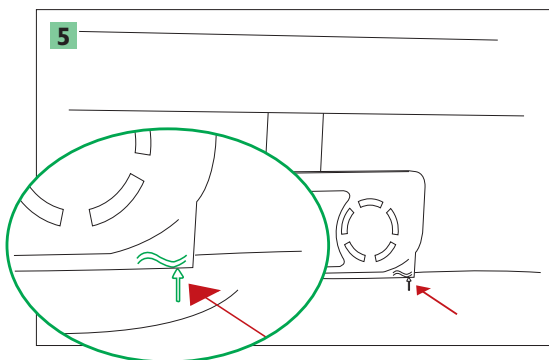
Position the attachment on the line and slide it down to the stop.



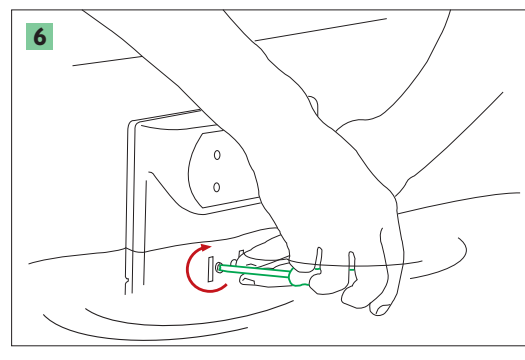
Sensor Espio™ must be fully flat against the wall. Adjust the attachment support if need be.



Slide Sensor Espio™ on its support in order to make absolutely sure that the water level is on the level mark.



Immersion level mark.



Tighten gently in order to maintain Sensor Espio™ on its support.

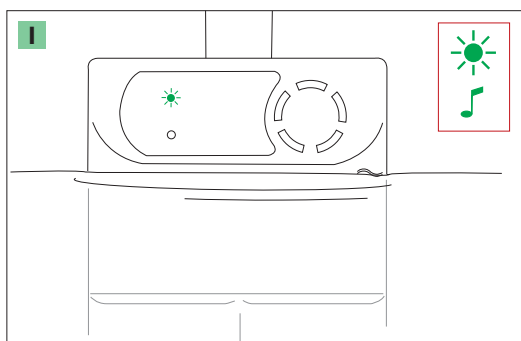
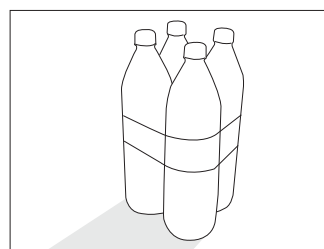
## d) installation tests

For these tests, Sensor Espio™ must be in ARMED mode (**green indicator light flashing**). If such is not the case, press the grey button on your remote control.

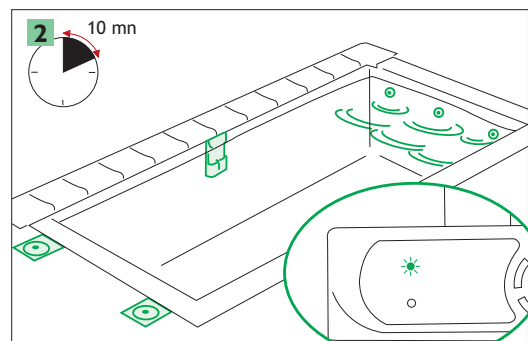
⚠ If in spite of this, the indicator light does not switch to green, this means that the pool is not still enough. You must imperatively wait until your pool is still before carrying out the tests. During the first 30 minutes of activation, the siren will sound for short time at low volume. For more information regarding the 'Test mode », see page 23.

⚠ It is necessary to wait for around 10 minutes (even if the light is green) so that your immersion detector can analyse its environment and stabilize itself (green light). It's only after this period that you'll be able to perform the tests mentioned hereafter.

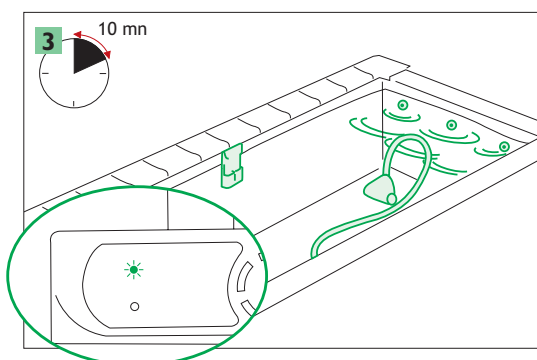
Prepare a 6 kg weight by tying together four 1.5 litre water bottles, as shown below. To do so, use adhesive tape to stick together 4 full bottles of water of 1,5l each, as indicated hereafter. To get the 6-kilo weigh back from the pool, we advise you to tie a rope around one bottleneck.



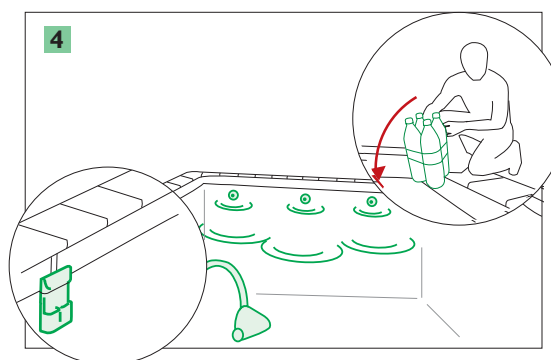
Sensor Espio™ is monitoring.



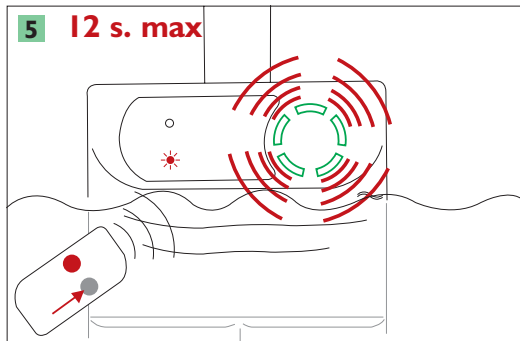
Filtration system on for 10 minutes Sensor Espio™ is monitoring.



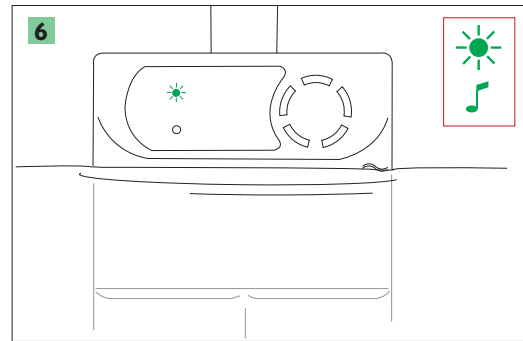
Filtration and robot cleaner on for 10 minutes, Sensor Espio™ is monitoring.



Filtration and robot cleaner on for 10 minutes, from the spot furthest away from Sensor Espio™, drop the 6 kilo weight from the top of the coping.



The siren must go off less than 20 seconds after the fall. Stop the alarm by pressing the grey button on your remote control.



Wait for the automatic restart (green light flashing)

**You must perform those additional fall tests from different spots of your pool (from the stairs also) as indicated below:**

❗ After simulating a fall, it is necessary to wait for the automatic rearming of your immersion detector before you perform another simulation. Depending on the wind strength and your pool agitation, rearming can take more than 10 minutes.

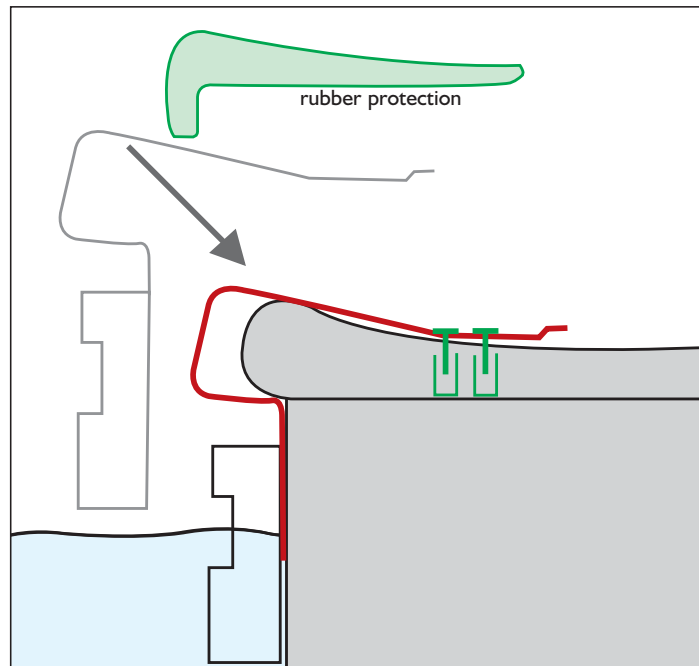
❗ During those tests, your device will exit “Test Mode” and your immersion detector’s siren will sound at full volume. If you want, you can reactivate the “Test Mode” for another 30 minutes. To do so, please see page 23.

If one of these tests fails:

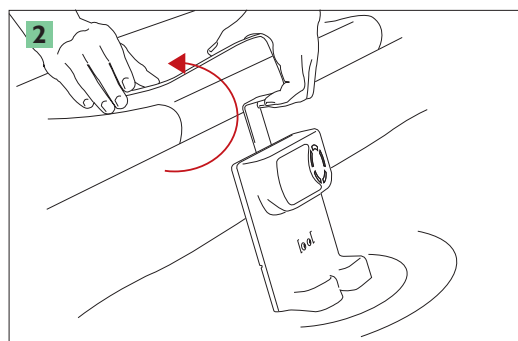
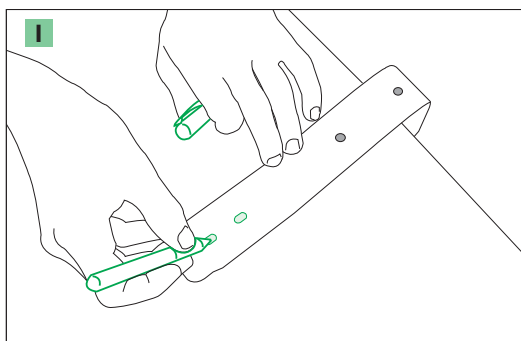
- look up page 29 (frequently asked questions)
- ask your retailer for advice
- ❗ • contact MG International’s technical support service : 0891 025 026 (0,22€/min)
- ask your questions to our technical support team by indicating all details to: [infoconso@aquasensor.com](mailto:infoconso@aquasensor.com)



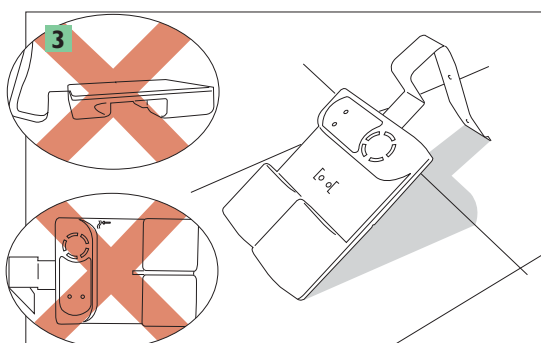
### e) existing pool: final attachment of Sensor Espio™



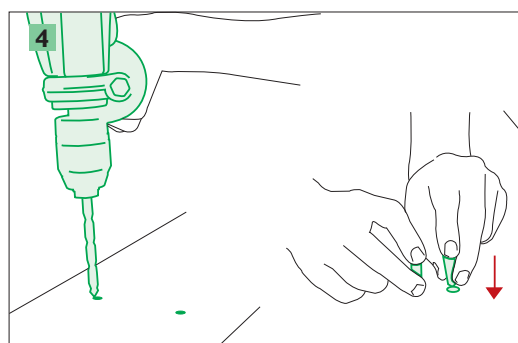
- ❗ Sensor Espio™ must imperatively be flat against the wall of the pool.  
To make sure this is the case, you might have to put the attachment support slightly out of shape so that it fits snugly against the coping.
- ❗ Put Sensor Espio™ in complete stop (see page 23) so that it can be handled freely during its final installation.



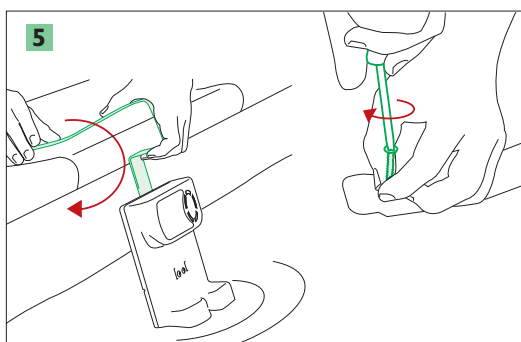
Make absolutely sure that Sensor Espio™ is vertical when handled, with the battery compartment down.



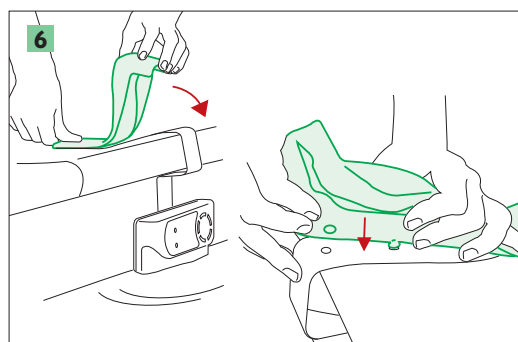
It is essential that Sensor Espio™ be handled and positioned as shown.



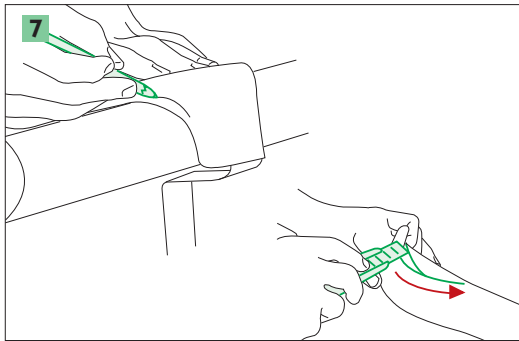
Drill the 2 holes with a Ø8mm bit and put in the two 2 rawplugs.



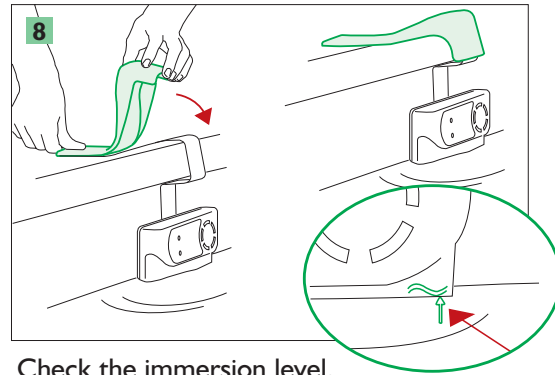
Clip the attachment support on the coping again. If there is a gap between the attachment support and the coping, put the wedging foam pad in it (cut it down to size if need be). Tighten the 2 screws.



Fit the protection for the attachment support.



If need be, cut the protection down to size using a craft knife.



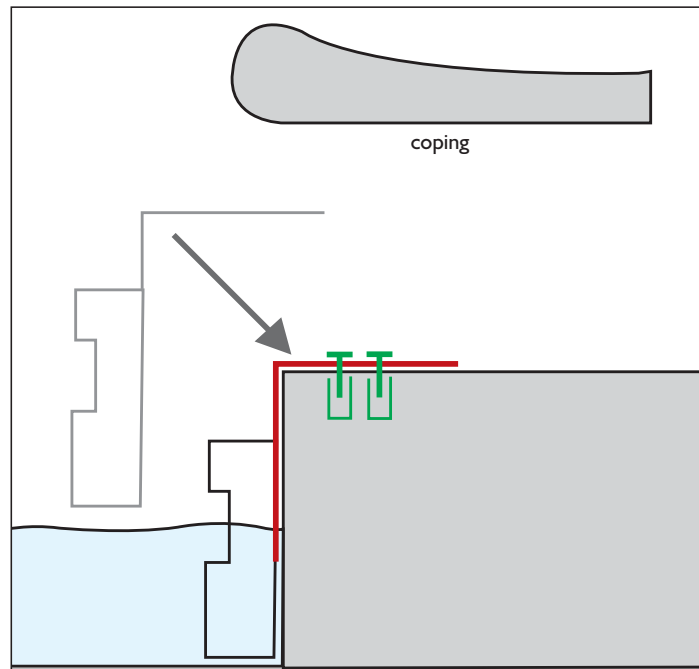
Check the immersion level.

⚠ Regularly check the water level in your pool, especially when the weather is very hot, or rainy, or if it has been windy for several days. The immersion level must imperatively be as recommended (+/- 2cm). If this instruction is not complied with, your fall detector will not work properly.

⚠ Sensor Espio™ exits test mode after 30 minutes and informs pool owner by a specific sound.

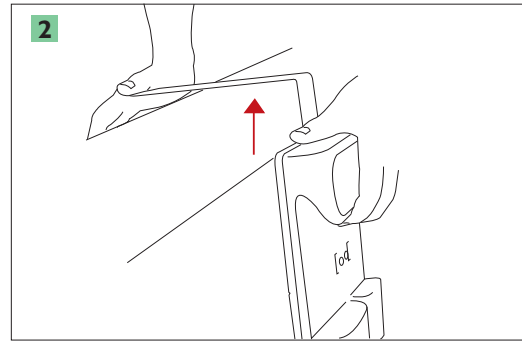
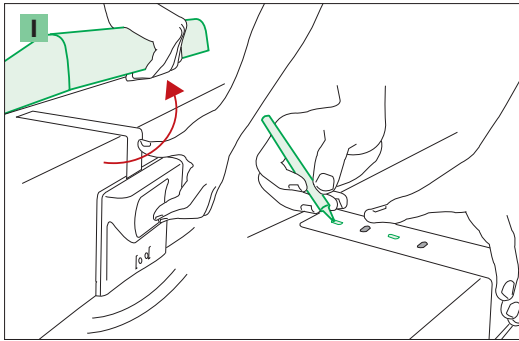
When the final attachment is done, you must proceed validation tests. (see page 17).

### e) pool under construction: final attachment of Sensor Espio™

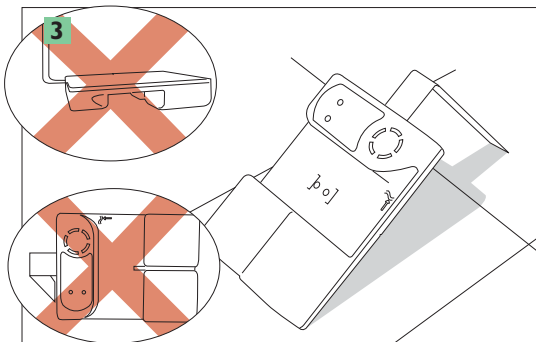


- ❗ Fasten the attachment support as your pool is being built, and imperatively before the coping is laid.
- ❗ Sensor Espio™ must imperatively be flat against the wall of the pool. To make sure this is the case, you might have to put the attachment support slightly out of shape.

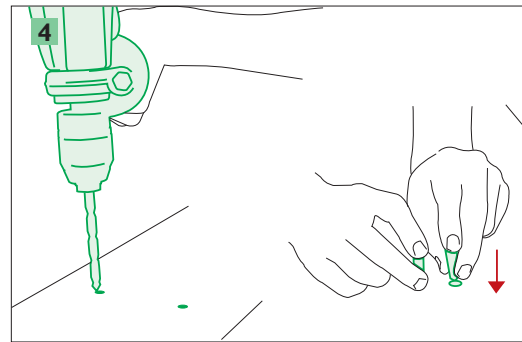




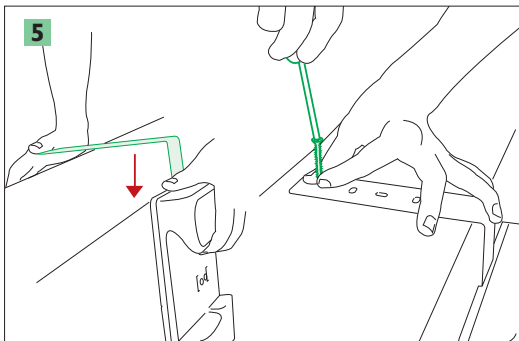
Make absolutely sure that Sensor Espio™ is vertical when handled, with the battery.



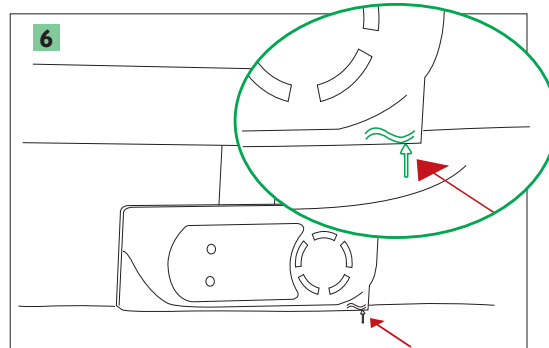
It is essential that Sensor Espio™ be handled and positioned as shown.




Drill the 2 holes with a Ø 0,31in bit and put in the two 2 rawplugs.




Tighten the 2 screws and replace the coping.



Check the immersion level.

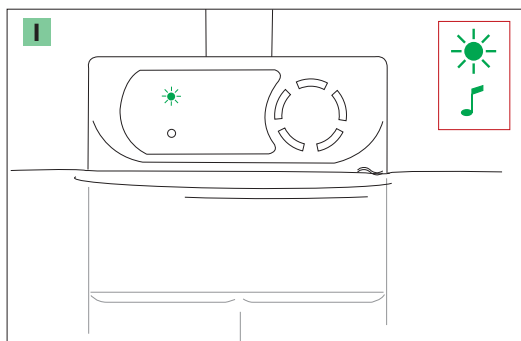
 Sensor Espio™ exits « Test Mode » after 30 minutes and informs you with a specific tone. When the final attachment is done, you must imperatively perform validation tests (see page 17)

 Regularly check the water level in your pool, especially when the weather is very hot, or rainy, or if it has been windy for several days. The immersion level must imperatively be as recommended (+/- 2cm). If this instruction is not complied with, your fall detector will not work properly.

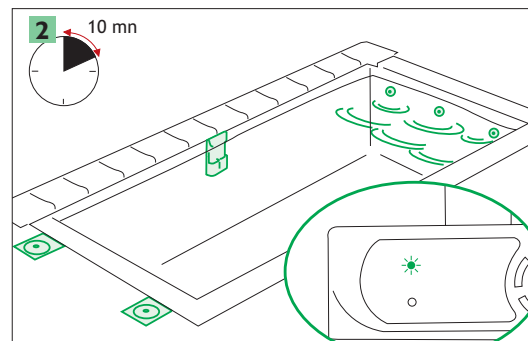
## f) validation tests

For these tests, Sensor Espio™ must be in ARMED mode (**green indicator light flashing**). If such is not the case, press the grey button on your remote control.

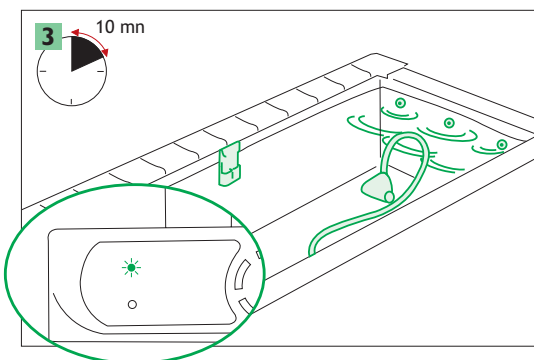
- ❗ If in spite of this, the indicator light does not switch to green, this means that the pool is not still enough.
- ❗ During installation, your device will exit “Test Mode” and your immersion detector’s siren will sound at full volume. If you want, you can reactivate the ‘Test Mode” for another 30 minutes. To do so, please see page 23



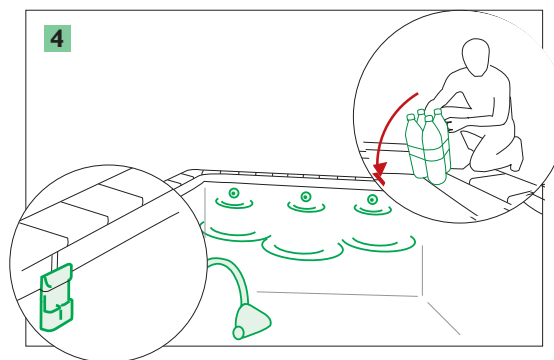
Sensor Espio™ is monitoring.



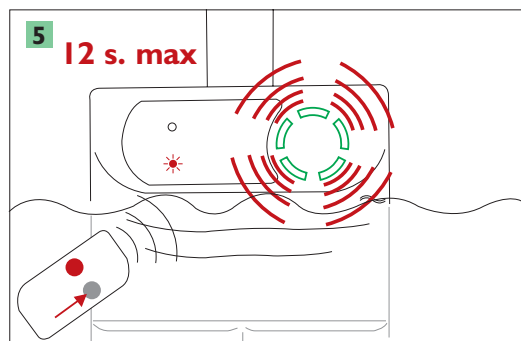
Filtration system on for 10 minutes Sensor Espio™ is monitoring.



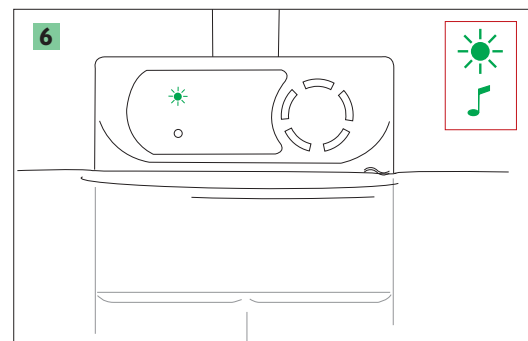
Filtration and robot cleaner on for 10 minutes, Sensor Espio™ is monitoring.



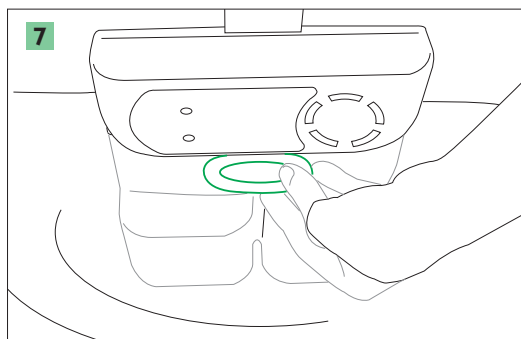
Filtration and robot cleaner on for 10 minutes, from the spot furthest away from Sensor Espio™, drop the 6 kilo weight from the top of the coping.



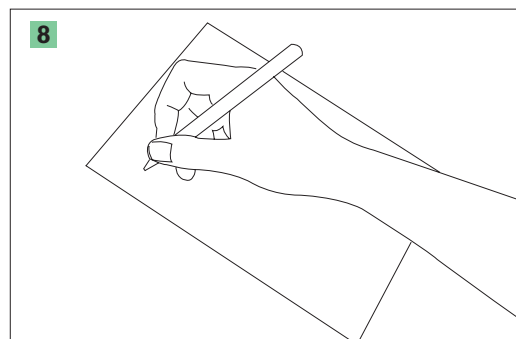
The siren must go off less than 12 seconds after the fall. Stop the alarm by pressing the grey button on your remote control.



Wait for the automatic restart (**green light flashing**) then repeat the tests from different spots .



Fit the screw cover.



Fill in the test validation sheet and send it back to manufacturer in the T envelope.

**!** During installation, your device will exit “Test Mode” and your immersion detector’s siren will sound at full volume. If you want, you can reactivate the “Test Mode” for another 30 minutes. To do so, please see page 23.

**!** **After a fall or one action from you, Sensor Espio™ is not monitoring any longer! It will automatically restart its monitoring after a few minutes. During this time, utmost vigilance must be required from parent/responsible adult.**

If one of these tests fails:

- look up page 29 (frequently asked questions)
- ask your retailer for advice
- !** • contact MG International’s technical support service : 0891 025 026 (0,22€/min)
- ask your questions to our technical support team by indicating all details to: [infoconso@aquasensor.com](mailto:infoconso@aquasensor.com)

### **Your immersion detector is now activated (green indicator light flashing)**

- Make sure that you are no longer in TESTS mode: the siren must be at full volume (100dB)
- **You must always perform additional fall tests at different locations in the pool** (including steps); the siren will go off loudly. If you do not stop it manually by moving the magnet over the swimmer symbol, the siren will sound for 1 minute and 30 seconds.
- Check that the alarm can be heard from the residence/living quarters. If such is not the case, install in the residence/living quarters the optional Sensor Domo™ remote siren available at your retailer’s.

## USING SENSOR ESPIO

### PRECAUTIONS FOR USE

**The remote control and magnet must imperatively be kept out of the reach of children.**

**Make absolutely sure that Sensor Espio™ is vertical when handled, with the battery compartment down.**

Certain rough weather conditions (strong winds, storms, etc.) and the use of certain powerful cleaning equipment can cause untimely alarm triggering.

Your alarm system will not operate if the water in the probe is frozen or the surface of the pool is frozen. It is hard to know when the water is frozen in the tube. If unsure, check that the alarm works.

When cleaning the outside of your fall detector, do not use any high-pressure cleaning apparatus, abrasive brush and/or other implements which might scratch or damage your fall detector.

To ensure proper operation of your device, please keep the water in your pool pure and clean at all times (in particular, to avoid the formation of algae inside the probe).

You are reminded that the French act No 2003-9 dated 3 January 2003 on swimming pool safety requires that a device be installed permanently throughout the year. Your retailer or MG International cannot be held liable in the event of drowning after the removal or complete stopping of your alarm system for whatever reason.

Should you restart your alarm system after a long period, perform the tests described page 17. In case of a problem, **contact your retailer immediately.**

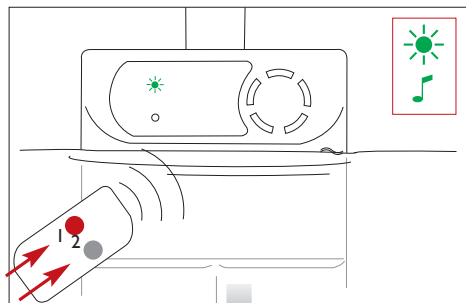
The only authorized operation on the device once it is installed is changing the battery.

Regularly check that your Sensor Espio™ is working properly by performing the tests mentioned in this guide (see page 17 and 35).

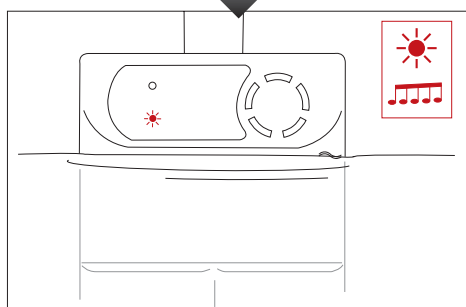
Some robot cleaners of the diving robot type are incompatible with fall detection systems.

The user who put the system in complete stop must be aware that utmost human vigilance has to take over.

## I WANT TO HAVE A SWIM



While Sensor Espio™ is in "ARMED" mode, keep the red button on the remote control pressed and press the grey button for confirmation within three seconds.



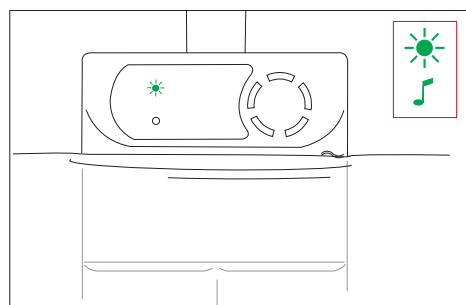
**The RED light of Sensor Espio™ comes on.**

Sensor Espio™ automatically switches to ARMED mode as soon as the pool is sufficiently still (automatic restart). The automatic restart can take place 10 to 15 minutes after the end of the swim, depending on the disturbance in the pool and the wind conditions.

**⚠ DURING THIS TIME, YOUR POOL IS NOT PROTECTED. UTMOST VIGILANCE IS REQUIRED FROM THE PARENT/RESPONSIBLE ADULT.**

Sensor Espio™ is no longer monitoring, the red light is flashing.

## REMISE EN ROUTE AUTOMATIQUE



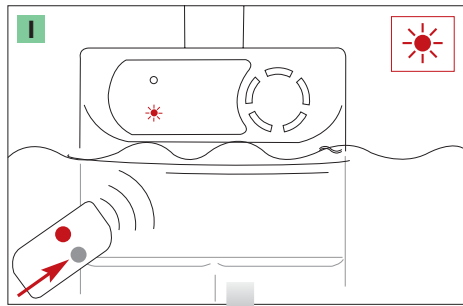
Sensor Espio™ checks the disturbance conditions of the pool at all times.

As soon as Sensor Espio™ considers that your pool has become still again, after a swim or strong disturbance (strong wind, swim jet system...), it switches to ARMED mode and the GREEN light flashes.

**Your pool is now protected.**

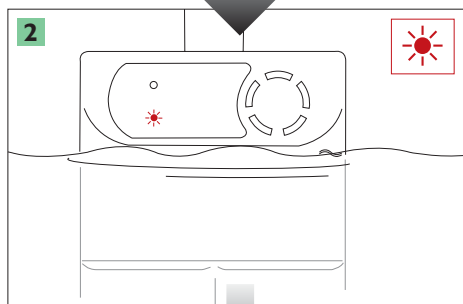
Sensor Espio™ is monitoring.

## MANUAL RESTART



After your swim, you can indicate to Sensor Espio™ that the pool is not being used, so that monitoring is resumed faster. You are then in one of the three situations described below:

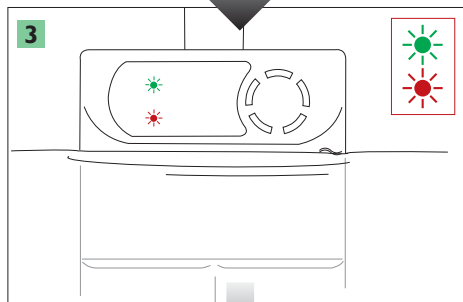
- **Pool very disturbed:** restart in 4 stages (steps 1-2-3 and 4)
- **Pool disturbed:** restart in 3 stages (steps 1-3 and 4)
- **Still pool:** restart in 2 stages (steps 1 and 4)



**1** Press the grey button on the remote control when leaving the pool.

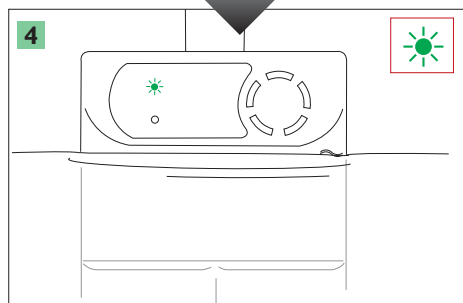
**2** Sensor Espio™ considers that your pool is very disturbed. In this case, your fall detector acknowledges your request by emitting a short, high-pitched beep, but cannot resume monitoring immediately. Its red indicator light flashes.

**⚠ DURING THIS TIME, YOUR POOL IS NOT PROTECTED. UTMOST VIGILANCE IS REQUIRED FROM THE PARENT/RESPONSIBLE ADULT.**



**3** Sensor Espio™ considers that your pool is disturbed and that its detection is disrupted. It indicates this by a short, high-pitched beep. Its green and red indicator lights flash in turn. It is in reactivation phase. Your fall detector will resume monitoring gradually, and as soon as possible.

**⚠ DURING THIS TIME, THE UTMOST VIGILANCE IS REQUIRED FROM THE PARENT/RESPONSIBLE ADULT.**



**4** Sensor Espio™ considers that your pool is still. It resumes monitoring by emitting a long, high-pitched beep. Its green indicator light flashes.


**Your pool is now protected.**

## TOO MUCH WIND

In some cases, in the presence of rough weather conditions (strong wind, heavy rain, thunderstorm...), your fall detector is liable to interrupt its monitoring function. Its red indicator light flashes.

As soon as wind gusts slow down, Sensor Espio™ will automatically rearm and its green light will flash.

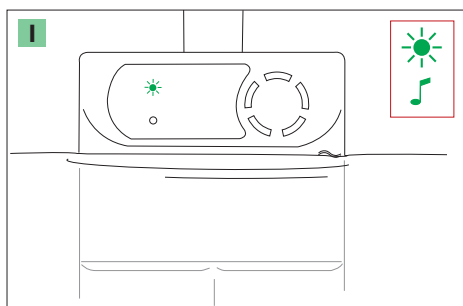
**YOU MUST BE PARTICULARLY VIGILANT WHEN THE WEATHER IS ROUGH.**

 Warning: The performance of Sensor Espio™ is not guaranteed beyond wind levels higher than those specified in standard NF P90-307/A1.

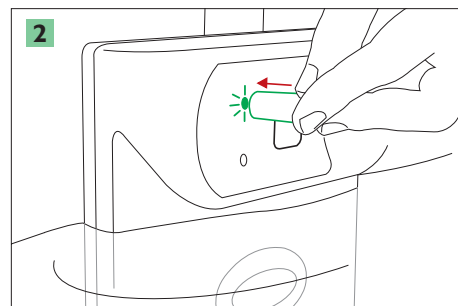
## USING THE MAGNET

### I WANT TO HAVE A SWIM

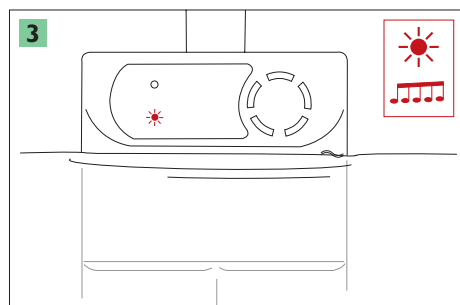
The magnet replaces the remote control, should it be lost or out of order.



Sensor Espio™ is monitoring.



Place the magnet on the green light as shown.



Sensor Espio™ is no longer monitoring!

 You can also perform a manual restart by placing the magnet on the green light.

## OTHER FUNCTIONS

### “TEST MODE”

This mode allows you to perform the installation and monthly tests without disturbing you or the neighbourhood. In this mode, the siren sounds only for a short time and at a low volume.

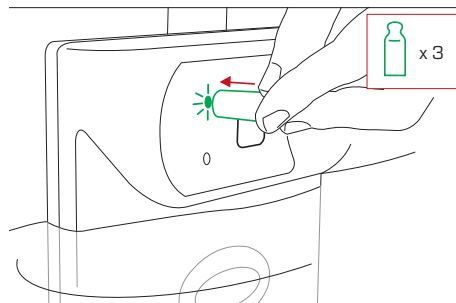
The test mode lasts for 30 minutes.

- ❗ The start and stop of the test mode are indicated by a specific tune.

This mode is automatically activated when batteries are installed.

Warning: When you place the magnet on the green light, the device first reacts as described above in the “using the magnet” section.

- ❗ You must keep the magnet on the light to have sound validation (indicated by a loud beep) and flashing of the red indicator light.



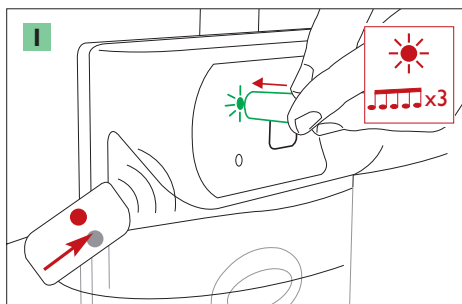
To switch in and out the test mode manually, place the magnet on the green indicator light until sound validation (loud beep) and fast flashing of the red indicator light. Repeat this operation three times.

### “COMPLETE STOP”

You are reminded that the French act No 2003-9 dated 3 January 2003 on swimming pool safety requires that a device be installed permanently throughout the year. Your retailer or MG International cannot be held liable in the event of drowning after the removal or complete stopping of your alarm system for whatever reason.

- ❗ Be careful, according to the regulation, the pool must be secured all year long.
- ❗ Do not put Sensor Espio™ in complete stop unless you have another safety system that complies with the Standard.

In complete stop mode, all Sensor Espio™ indicator lights are off.



Place the magnet on the green indicator light until you obtain sound validation (indicated by a loud beep) and fast flashing of the red indicator light, then press the grey button on the remote control for confirmation. The red indicator light remains on during the confirmation sound signal (15 short beeps).

- ❗ To reactivate Sensor Espio™ press the grey button.



## Replacing the batteries

Sensor Espio™ gives a low-battery alert by:

- 1 low pitched beep every minute,
- 1 low pitched beep at each change of status (I want to have a swim, Automatic restart, Manual restart,...).

In this case, the 4 D alkaline batteries must be replaced with new batteries of the same type as soon as possible.

For practical safety reasons, we advise you to replace the batteries at the start of the season. The use-by dates are given on the alkaline batteries. Be responsible, and take the old batteries back to your retailer instead of throwing them away.

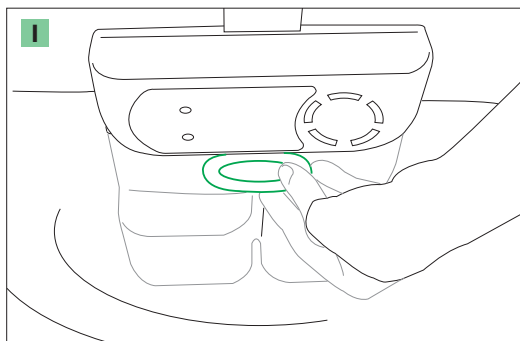
### Procedure:

Put Sensor Espio™ in complete stop (see page 23).

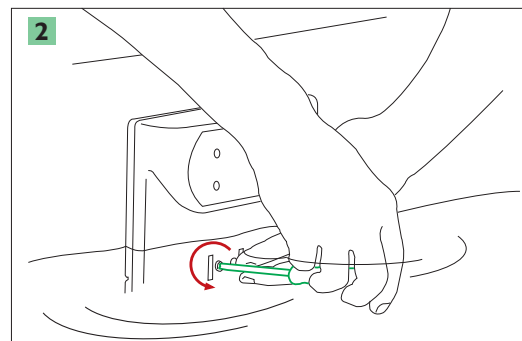
**Make absolutely sure that Sensor Espio™ is vertical when handled, with the battery compartment down.**

**When you put Sensor Espio™ in complete stop, please take all the necessary steps to secure the access to your pool.**

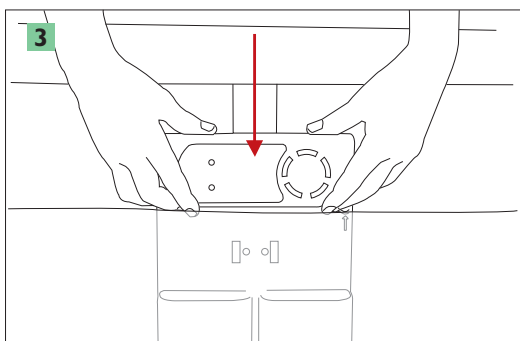
**DURING THIS TIME, YOUR POOL IS NOT PROTECTED. UTMOST VIGILANCE IS REQUIRED FROM THE PARENT/RESPONSIBLE ADULT.**



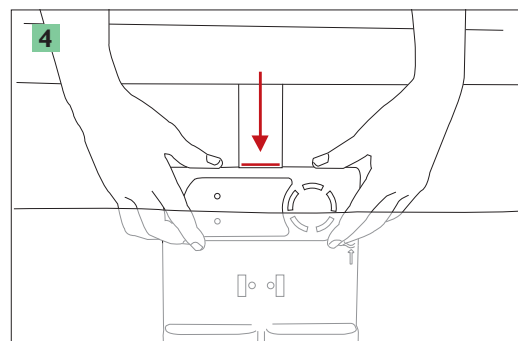
1 Remove the screw cover (if any) using a flat screwdriver.



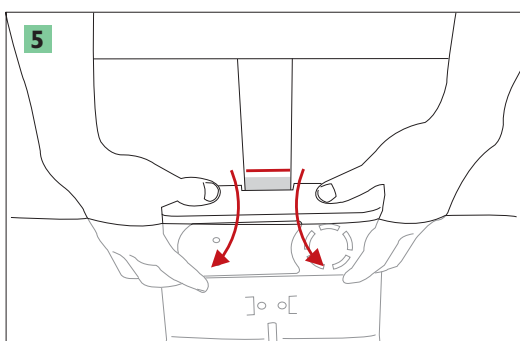
2 Unscrew the 2 front screws.



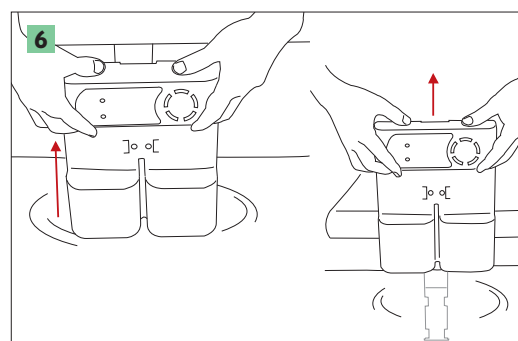
Slide Sensor Espio™ downwards along its support.



Bring Sensor Espio™ up to the attachment support stop.



Remove Sensor Espio™ from its attachment support.

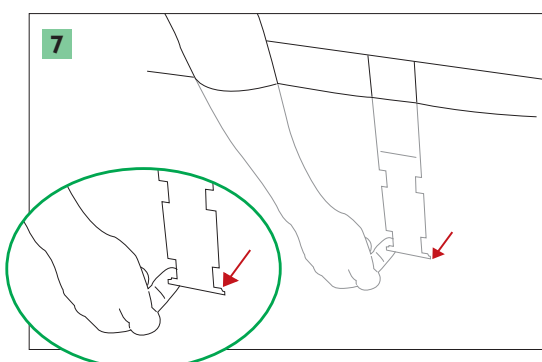


Take Sensor Espio™ out of the water, taking care to keep it vertical.

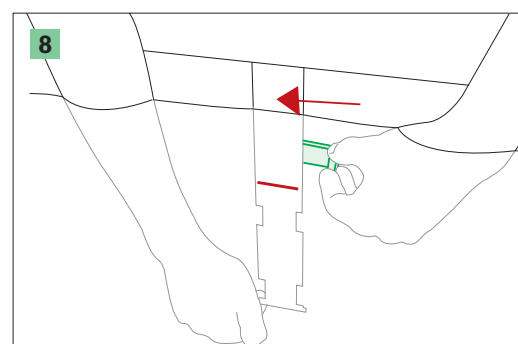
Replace the batteries as per the procedure described in page 6.

**⚠ Remove any trace of moisture on the cover and in the compartment before inserting the new batteries.**

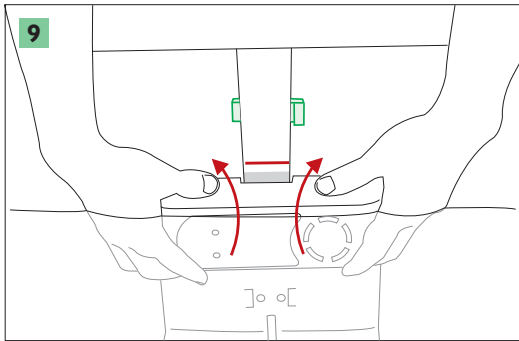
Once the batteries have been inserted, please replace your fall detector at its location in the swimming pool as follows:



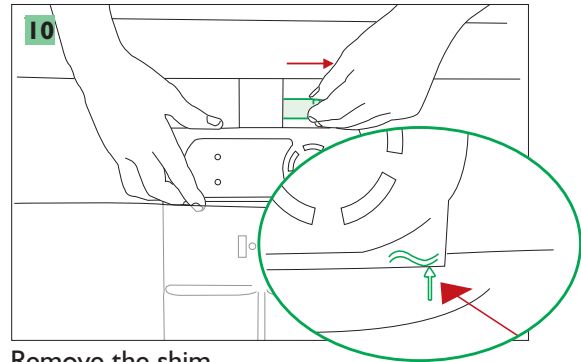
Move the attachment support away from the wall by grabbing it by the end.



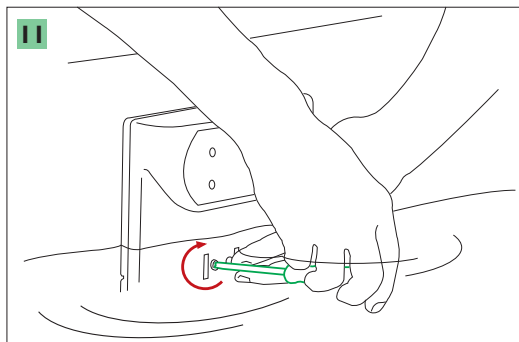
You must insert the shim supplied 2 in above the mark, between the wall of the pool and the attachment support.



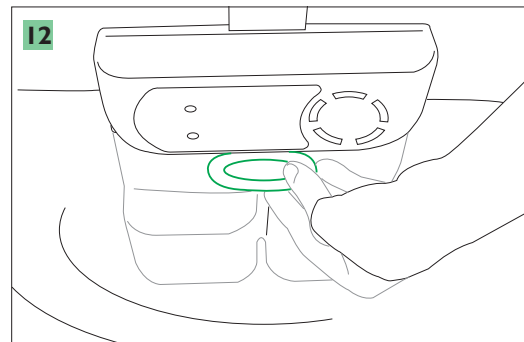
**9** Position the top of Sensor Espio™ opposite the mark on the attachment support. Slide it upwards on the attachment support.



**10** Remove the shim. Adjust Sensor Espio™ on its support in order to respect the immersion level.



**11** Screw the 2 front screws.



**12** Clip on the screw cover.

**!** During the first 30 minutes of activation, the siren will sound for short time at low volume. For more information regarding the 'Test mode », see page 23

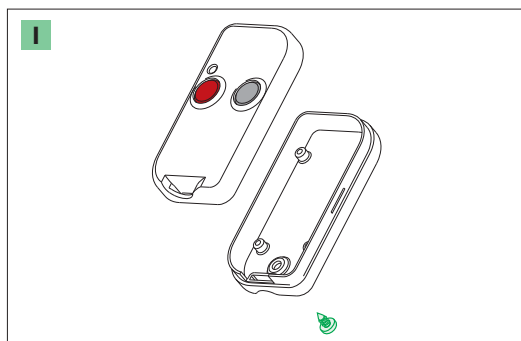
**Perform the validation tests again for a last check (see page 17).**

**!** Regularly check the water level in your pool, especially when the weather is very hot, or rainy, or if it has been windy for several days. The immersion level must imperatively be as recommended (+/- 2cm). If this instruction is not complied with, your fall detector will not work properly.

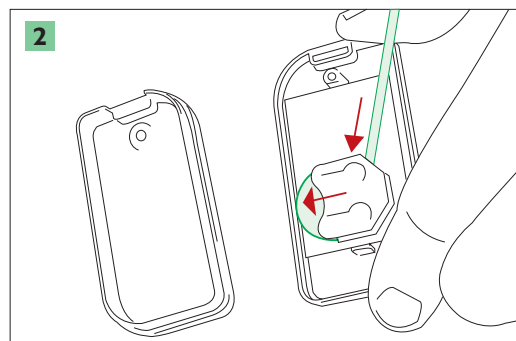
## Replacing the remote control battery

When the battery is too low, the remote control indicates this with:

- either fast flashing of the red indicator light for 3 seconds;
- or the light stays off.



Unscrew the screw under the base.



Carefully take the old battery out using a screwdriver. Replace it with a new one (ref. 3V DL2032)

## I have a problem with my fall detector

### 2 REGULAR BEEPS ARE HEARD

Sensor Espio™ indicates that there is an operating problem by emitting 2 short, low-pitched beeps every minute.

In this case, your immersion detector needs to be sent back to our After-Sales Service. Send your device back, with a copy of your purchase invoice, and giving your details, to After-Sales Service at the address below:

MG International - SAV Sensor Espio  
Z.I. Athélia II  
220 impasse du Serpolet  
13600 La Ciotat - France

### I CANNOT FIND THE CAUSE OF MY PROBLEM

Your device does not emit the 2 beeps as described above, and you cannot understand where the problem comes from.

In this case, please contact by phone (0 891 025 026 – 0,22€/min), by e-mail (infoconso@aquasensor.com) or by mail the MG International After-Sales Service:

Please provide a clear description of the problem encountered, so that your device can be processed quickly. Please also provide our technicians with your details and a sketch of your pool, including its dimensions (length, width, depth, recess if any) as well as the location of the return fittings, vacuum fittings, skimmer, and any other piece of equipment which might create disturbances, such as, for instance, a swim jet. Show the location of the fall detector on the edge of your pool.

This information will help our technicians to better understand the problem with your device, and to quickly find a solution.

## Frequently asked questions

**Q1.** During the test phase with filtering or filtering + robot cleaner, the siren goes off accidentally, or your fall detector switches from monitoring mode (green light flashing) to non-monitoring mode (red light flashing)?

- Make sure that your fall detector is further than 1 meter away from the filtration system (return fittings, waste plug, skimmer, vacuum fittings, etc.) or waterfall or any other device that may disturb the pool at this place.
- Check the immersion depth of your fall detector. Rectify it if required (see page 12 and 14)
- Perform the installation and validation tests under favorable weather conditions.
- Your fall detector is not suited to your type of pool. Ask your retailer or the after-sales service for advice: (0891 025 026 – 0,22€/min)
- Your robot cleaner is not compatible with your fall detector. Either it causes an event similar or identical to the fall of a child (see NF P90-307/A1), or it is too powerful. Contact your retailer for advice.
- If none of these conditions seems to you to be the cause of the malfunction, ask your retailer for advice or contact our technical support (0891 025 026 – 0,22€/min).

**Q2.** When the 6kg weight is dropped during the test phase, your fall detector takes longer than 12 seconds to set off the siren, or does not set it off at all?

- The dimensions of your pool are greater than 10 x 5 meters, or your pool is of a particular shape. A single fall detector is not sufficient. Contact your retailer for advice.
- Your fall detector is not positioned at the recommended location. The fall occurs beyond its 7 meters detection range. Position it at the recommended location (see page 6).
- If none of these conditions seems to you to be the cause of the malfunction, ask your retailer for advice or contact our technical support (0891 025 026 – 0,22€/min).

For any other malfunction, ask your retailer for advice or contact our technical support (0891 025 026 – 0,22€/min).

## Legal information

The French Act No. 2003-9 and its implementing order No. 2003-1389 were passed in order to fight against the growing number of accidents and drowning incidents in private swimming pools for individual or collective use.

These laws set the following provisions:

Starting from January 1, 2004, any new, non-enclosed, in-ground private swimming pool for individual or collective use must be equipped with a standardized safety system.

As of this date, the builder or installer of such a swimming pool must provide the owner with a technical sheet indicating the system chosen.

Owners of non-enclosed in-ground private swimming pools for individual or collective use, installed before January 1, 2004, must have equipped their swimming pool with a standardized safety system by January 1, 2006.

If the dwelling is rented seasonally, a standardized safety system must be installed before May 1, 2004.

The importance of active monitoring by parents must be underlined.

## SAFETY ADVICE RELATED TO THE ALARM

This alarm system is not a replacement for common sense or individual responsibility. Its purpose is not to be a replacement for vigilance by a parent or responsible adult, which remains the essential factor in protecting children under the age of 5.

This alarm is a protective device which signals a danger (or danger risk). A responsible adult must take quick action within 3 minutes after the alarm triggers.

Any user who shuts off the system must be aware that surveillance by a person must take over from the system.

You must take action when the failure signal sounds are heard.

The greatest vigilance by the parent/responsible adult is necessary between the end of the swim and reactivation of the alarm system.

Switch off the swim jet at the end of the swim, to allow the reactivation of the alarm system.

The performance as defined in standard NF P90-307/A1 is not guaranteed beyond wind levels greater than those specified in this standard.

In no event must the installation of the alarm system reduce your vigilance or replace active monitoring of the swimming pool and the area around it.

This alarm system, like any other safety device or equipment, is an additional tool which is useful in the event of a momentary lack of surveillance.

## GENERAL SAFETY ADVICE

**You alone are responsible for your children's safety!**

**The risk is greatest when children are less than five years old.**

**Accidents don't just happen to other people!**

**Be prepared, and tackle it!**

### ***Monitor and act!***

- children must be constantly supervised from nearby.
- nominate one adult as responsible for safety.
- increase monitoring when there are many people using the pool.
- teach your children to swim as early as possible.
- wet back of neck, arms and legs before entering the water.
- learn the steps that save lives, especially those for children.
- prohibit diving and jumping in the presence of small children.
- prohibit running and playing around the pool.
- do not allow a child who does not swim well to enter the pool without a life jacket or vest, or unaccompanied.
- do not leave toys near or in an unattended pool.
- constantly maintain clear and pure water.
- store water treatment products out of reach of children.
- some counter-current swimming systems do not allow the immersion detection system to be reactivated automatically.
- some cleaning robots like diving robot are incompatible with immersion detection systems.
- in order to prevent access to the pool by children under five when the failure signal has triggered, take all the required measures until the device is repaired.
- the only authorized operation is to change the batteries and fuses at the beginning of the season.

### ***Be prepared!***

- telephone accessible near the pool to not leave your children unattended while you phone.
- life-buoy and pole near the pool.

### ***In the event of accident***

- remove the child from the water as quickly as possible.
- immediately call the emergency services and follow the instructions they give you.
- replace wet clothes with warm blankets.



## WARRANTY AND AFTER SALES SERVICE

**Your immersion detector is guaranteed for 2 years (detection unit and optional remote wireless siren).**

**Ensure that children or animals are not present during installation of your device.**

### WARRANTY COVER

MG International or its retailers shall provide the purchaser of this product (Sensor Espio™) with the services presented below.

MG International, distributor of Sensor Espio™ warrants Sensor Espio™ against any defects in materials and workmanship during the period stipulated below, beginning from the date of first purchase:

- Sensor Espio™ central units 2 years parts and labor
- Remote wireless siren: 2 years parts and labor

Any of the consumables (e.g. batteries, dehydrating sachets, magnets, etc.) included in the original Sensor Espio™ packaging that prove defective due to a defect in materials or workmanship shall be replaced free of charge during a period of 90 days, starting from the date of purchase.

**If the user customer sells or transfers ownership or use of Sensor Espio™ in any manner whatsoever during the warranty period, the warranty shall be considered void, since no warranty of correct installation or transport can be given by the final user, particularly as regards the full respect of the validation sheets.**

**It is expressly indicated that this clause is opposable to the new owner.**

For the contractual parts and labour warranty to be applied, all the following conditions must be met:

- Installation in compliance with the applicable product documentation or carried out by a professional installer
- Installation tests performed and test validation sheet completed, signed and sent back to MG International by mail, within 7 days after purchase (postmark taken as proof).
- Ownership of a copy of the purchase invoice.
- Non deterioration of the components of your alarm system through misuse, breakage, and more generally, through the fault of the user.
- Regular maintenance of the siren and the unit (check of operating status of unit by regular tests and monthly update of service manual).
- Immersion tests performed regularly (once per month). Do not hesitate to inform your retailer in the event of failures.
- Compliance with installation instructions.

### SHOULD A REPAIR BE NECESSARY

**In case of failure by Sensor Espio™ the customer must make sure that the problem encountered is not due to a faulty installation, non-compliance with the installation and operation guide, or to maintenance. If, after return to After-Sales Service, no defect in materials or workmanship is established by the technicians, MG International reserves the right to invoice the After-Sales Service's costs.**

**If Sensor Espio™ proves to malfunction due to a defect in materials or workmanship during the warranty period, MG International shall either replace or repair the device, ONLY ON CONDITION THAT the customer produces a copy of original purchase.**

If this proof of purchase is not produced, MG International reserves the right to refuse to carry out a service, or to invoice the costs of maintenance for all work carried out.

**In case of technical difficulties with Sensor Espio™ the customer must immediately contact the retailer as a priority, or MG International. if this is unsuccessful.**

**For any call, the customer must be able to describe the problem in detail so that the retailer or an after-sales service representative can determine whether a repair is required. The customer must provide the serial number, the date and precise place of purchase (town, name and address of retailer).**

**In any correspondence the customer must clearly describe the problem and provide the serial number, the date and precise place of purchase, and clearly write his contact details.**

**MG International reserves the right to replace the repairable parts with new or refurbished parts.**

In case of equipment or parts being immobilized for more than 7 days in the workshop or at home, the warranty shall be extended by the amount of time it is immobilized. This time limit shall start from the day either of acceptance by the MG International approved repairer or of the request for intervention.

During the immobilization period, it shall be left to the discretion of the retailer to offer a temporary replacement device. Neither the retailer nor MG International are obliged to provide a replacement on a systematic basis for the device in the event of immobilization. Be sure to increase active personal monitoring of your pool during this period.

#### **WARRANTY EXCLUSIONS**

The warranty does not apply to products on which the original identification marks have been removed or modified and does not apply to defects or failures resulting from an accident, negligence or misuse; non compliance with the user's manual, a failure or defect in the electrical supply; in an external electrical circuit; lightning; the use of parts not supplied by MG International; prolonged immersion having degraded components; an unusual physical or electrical constraint; modification, adjustment, repair, maintenance or installation of a part by any other party than MG International or its approved subcontractors and retailers or due to any other cause which, at MG International's discretion, does not result from a defect in materials and workmanship .

**This warranty is given in lieu of all other expressed or implied warranty, and the liability of MG International hereby shall be only limited to the repair of Sensor Espio™ or to the replacement of the aforementioned product.**

**MG International shall, in particular, not be required to replace or repair Sensor Espio™ if they are defective for the reasons given in this section. IN NO EVENT OR CIRCUMSTANCES shall MG International be held responsible for any other costs, charges, expenses, losses or damages (indirect or otherwise), of any kind whatsoever. In addition, in the event that the device be returned or sent to MG International with modifications, damage of any kind or removal of components, MG International shall be permitted to refuse to warrant the device, and shall in no event be required to repair or replace it.**

**In no event may your retailer, the distributor or the manufacturer of this alarm system be held responsible for any child, dependant person, adult or animal falling or drowning. In no event must the installation of the alarm system reduce your vigilance or replace active personal monitoring of the swimming pool and the pool area.**

This warranty constitutes MG International's sole responsibility with regard to the products and services supplied pursuant to this warranty. MG International shall carry out no other obligation, duty or responsibility, whether contractual, extracontractual (including responsibility for negligence) or other towards the customer.

It should be noted that certain rough weather conditions may destabilize your Sensor Espio™ (false alarms).

In these conditions check that your child does not go near the pool. Avoid turning your immersion detector off for a long period of time.

MG International has only an obligation of means (to supply to the customer a device in working order, with no defects in materials and workmanship).

MG International cannot be held responsible for any child, adult or animal whatsoever falling or drowning.

Monitoring by parents remains the best safety solution for children.

**SENSOR ESPIO™ IS NOT A REPLACEMENT FOR COMMON SENSE OR INDIVIDUAL RESPONSIBILITY.**

**ITS PURPOSE IS NOT TO BE A REPLACEMENT FOR RESPONSIBILITY AND VIGILANCE BY A PARENT AND/OR RESPONSIBLE PERSON, WHICH REMAIN THE ESSENTIAL FACTOR IN PROTECTING CHILDREN AND DEPENDANT PERSONS.**

No clause in this warranty affects the user's statutory rights.

## Monthly tests

In order to check the proper operation of your Sensor Esprio™, it is essential that verification tests be carried out on a monthly basis (see p. 17) and that the results be recorded in the form below. In the event of malfunction, inform your retailer immediately and take the necessary measures to prevent access to your pool, and monitor it.

Retailer contact details .....  
Serial number of device .....  
Date of purchase .....

- 1. tests performed on .....  
successful  - not successful
- 2. tests performed on .....  
successful  - not successful
- 3. tests performed on .....  
successful  - not successful
- 4. tests performed on .....  
successful  - not successful
- 5. tests performed on .....  
successful  - not successful
- 6. tests performed on .....  
successful  - not successful
- 7. tests performed on .....  
successful  - not successful
- 8. tests performed on .....  
successful  - not successful
- 9. tests performed on .....  
successful  - not successful
- 10. tests performed on .....  
successful  - not successful
- 11. tests performed on .....  
successful  - not successful
- 12. tests performed on .....  
successful  - not successful

- 13. tests performed on .....  
successful  - not successful
- 14. tests performed on .....  
successful  - not successful
- 15. tests performed on .....  
successful  - not successful
- 16. tests performed on .....  
successful  - not successful
- 17. tests performed on .....  
successful  - not successful
- 18. tests performed on .....  
successful  - not successful
- 19. tests performed on .....  
successful  - not successful
- 20. tests performed on .....  
successful  - not successful
- 21. tests performed on .....  
successful  - not successful
- 22. tests performed on .....  
successful  - not successful
- 23. tests performed on .....  
successful  - not successful
- 24. tests performed on .....  
successful  - not successful

Emergency phone numbers (to be learnt by heart and displayed near the pool)

- Fire brigade: 18
- Emergency medical service: 15
- European emergency number: 112 (from all phones)
- Regional treatment centers in case of poisoning: Angers (Center and Pays de la Loire regions) - Bordeaux (Aquitaine and Poitou-Charentes regions) Lille (Haute-Normandie, Nord-Pas-de-Calais and Picardie regions) – Lyons (Auvergne, Rhône-Alpes regions) - Marseilles (Corsica, Languedoc-Roussillon, Provence-Alpes-Côte d'Azur and Réunion regions) - Nancy (Burgundy, Champagne-Ardenne and Lorraine regions) - Paris (Ile-de-France and West Indies-Guiana regions) Rennes (Basse-Normandie and Brittany regions) - Strasbourg (Alsace and Franche-Comté regions) Toulouse (Limousin and Midi-Pyrénées regions)

Immersion time and survival rate

Immersion time	Survival rate
1 minute	95 %
2 minutes	80 %
3 minutes	65 %
4 minutes	25 %
5 minutes	1 %

Figures provided by the French Department of Civil Protection and used as reference in standards and official laws.

There is no zero risk.

Only active monitoring by you, combined with passive monitoring by your immersion detector can give a high level of safety.

In no event must the installation of this alarm system reduce your vigilance or replace active monitoring of the swimming pool and the area around it.

Speed of intervention after the alarm is triggered is decisive.  
Never go too far if your child is playing near the pool.

Guidelines on resuscitations and first aid procedures are available in many emergency centers or associations.  
You can also contact your state health insurance office to attend first aid courses.



**Product reference:**

Sensor Espio™ (ESP007 - M)







A series of horizontal lines for writing, starting from the top and extending down to a green line near the bottom of the page.