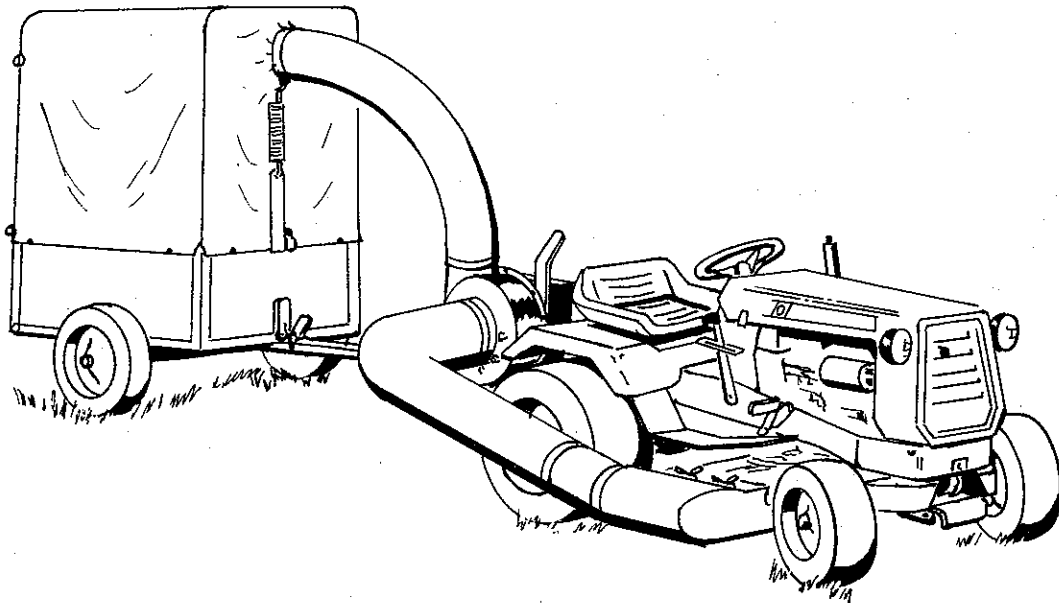


Mfr's No. 173

# HOMELITE®

P.T.O. Driven Vacuum Collector  
for T-10, T-12, T-15 & T-16 Tractors

No. LM-16001-73



## Assembly Instructions and Parts List

- |  |                        |
|--|------------------------|
| <b>High Capacity Trailer Frame and Cover</b> | <b>No. LM-09905-31</b> |
| <b>Low Profile Trailer Frame and Cover</b>   | <b>No. LM-09906-24</b> |
| <b>Roving Nozzle</b>                         | <b>No. LM-09904-47</b> |

# Safety □□□

- Know the controls and how to stop quickly-READ THE OWNER'S MANUAL.
- Do not allow children to operate vehicle. Do not allow adults to operate it without proper instruction.
- Do not carry passengers. Keep children and pets a safe distance away.
- Clear work area of objects which might be picked up and thrown.
- Disengage all attachment clutches and shift into neutral before attempting to start engine (motor).
- Disengage power to attachments and stop engine (motor) before leaving operator position.
- Disengage power to attachment(s) and stop engine (motor) before making any repairs or adjustments.
- Disengage power to attachments when transporting or not in use.
- Take all possible precautions when leaving vehicle unattended; such as disengaging power-take-off, lowering attachments, shifting into neutral, setting parking brake, stopping engine and removing key.
- Do not stop or start suddenly when going uphill or downhill. Mow up and down the face of steep slopes; never across the face.
- Reduce speed on slopes and in sharp turns to prevent tipping or loss of control. Exercise extreme caution when changing direction on slopes.
- Stay alert for holes in terrain and other hidden hazards.
- Use care when pulling loads or using heavy equipment.
  - A. Use only approved drawbar hitch points.
  - B. Limit loads to those you can safely control.
  - C. Do not turn sharply. Use care when backing.
  - D. Use counterweight(s) or wheel weights when suggested in owner's manual.
- Watch out for traffic when crossing or near roadways.
- When using any attachments never direct discharge of material toward bystanders nor allow anyone near vehicle while in operation.
- Handle gasoline with care -- it is highly flammable.
  - A. Use approved gasoline container.
  - B. Never remove cap or add gasoline to a running or hot engine or fill fuel tank indoors. Wipe up spilled gasoline.
  - C. Open doors if engine is run in garage -- exhaust fumes are dangerous. Do not run engine (motor) indoors.
- Keep vehicle and attachments in good operating condition and keep safety devices in place.
- Keep all nuts, bolts, and screws tight to be sure equipment is in safe working condition.
- Never store equipment with gasoline in the tank inside a building where fumes may reach an open flame or spark.
- Allow engine to cool before storing in any enclosure.
- To reduce fire hazard keep engine free of grass, leaves or excessive grease.
- Vehicle and attachment should be stopped and inspected for damage after striking a foreign object and the damage should be repaired before restarting and operating the equipment.
- Do not change engine governor settings or overspeed engine.
- When using vehicle with mower:
  - (1) Mow only in daylight or in good artificial light.
  - (2) Never make a cutting height adjustment while engine (motor) is running if operator must dismount to do so.
  - (3) Shut engine (motor) off when removing grass catcher and/or unclogging chute.
  - (4) Check blade mounting bolts for proper tightness at frequent intervals.
- Check grass catcher bags frequently for wear or deterioration. Replace with new bags for safety protection.

## WARRANTY

We warrant this HOMELITE product to be free from defects in material or workmanship under normal use and service, except that we make no warranty, express or implied, with respect to tires, engines, generators or voltage regulators (which usually are warranted by their respective manufacturers) nor with respect to any unit which after sale by HOMELITE has been altered in any way without HOMELITE'S express consent. Our obligation under this warranty is limited to replacing, without charge any part which is proven defective within one year (30 days if the unit is used for commercial, rental or municipal purposes) from date of purchase, if returned to us, with transportation charges prepaid, at a HOMELITE branch office or to a dealer whom we have authorized to make the replacement.

THIS WARRANTY IS IN LIEU OF ALL OTHER WARRANTIES, EXPRESS OR IMPLIED, OF MERCHANTABILITY, FITNESS FOR A PARTICULAR PURPOSE, PERFORMANCE OR OTHERWISE AND IN NO EVENT SHALL HOMELITE BE LIABLE FOR ANY INCIDENTAL, SPECIAL OR CONSEQUENTIAL DAMAGES.

**HOMELITE**  
a division of Textron Inc.

## HOMELITE P.T.O. Driven Vacuum Collector

The HOMELITE PTO Driven Vacuum Collector requires two accessories for its operation. These are a) a HOMELITE dump cart and b) either one of two available cart covers. Not required, but available as an option, is a roving nozzle for the vacuum collector. The assembly instructions and parts lists for the PTO Driven Vacuum Collector, the two cart covers and the roving nozzle are contained in this book. The instructions and parts list for the dump cart will be found packaged with the car.

## Assembly

### Mounting the Vacuum Collector

1. Install the drive pulley on the tractor PTO shaft using a  $3/16 \times 3/16 \times 1$ " key. Secure the pulley with the set screw provided. Install the three belt stops on the tractor frame. The  $7/16-14 \times 1-1/4$ " capscrew provided for the upper belt stop, replaces the original cap screw on the tractor (Figure 1).

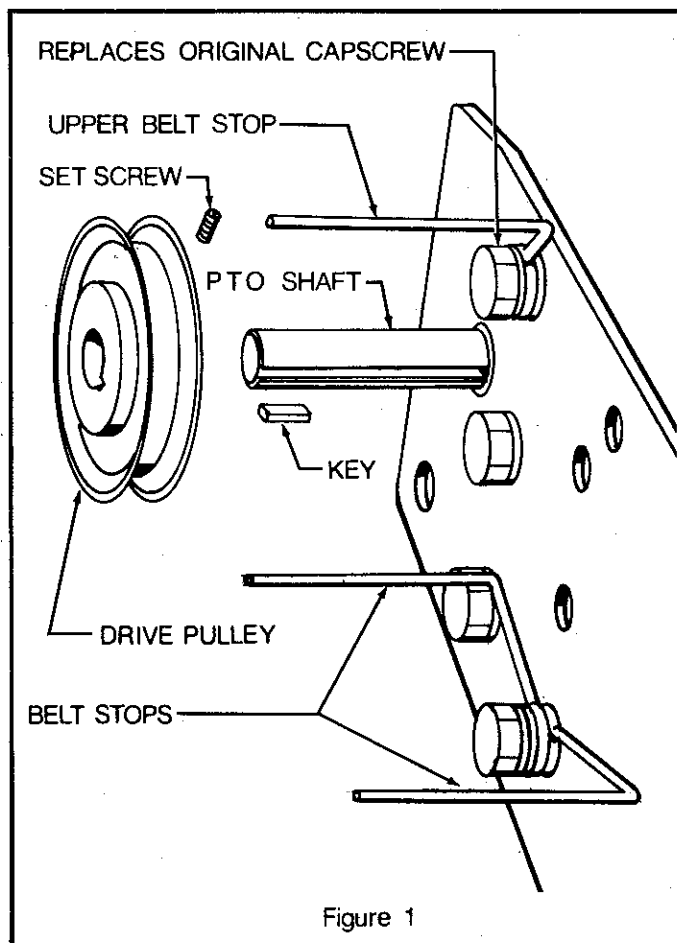


Figure 1

2. Install the lift shaft on the rear of the tractor using the two set collars. Secure the set collars with the two  $5/16-18$  set screws provided (Figure 2).
3. Place the hooks on the upper arms of the support assembly over the lift shaft. Align the holes in the lower arm of the support assembly with the holes in the tractor frame. Secure with two pins and two quick pins. (Figure 2)

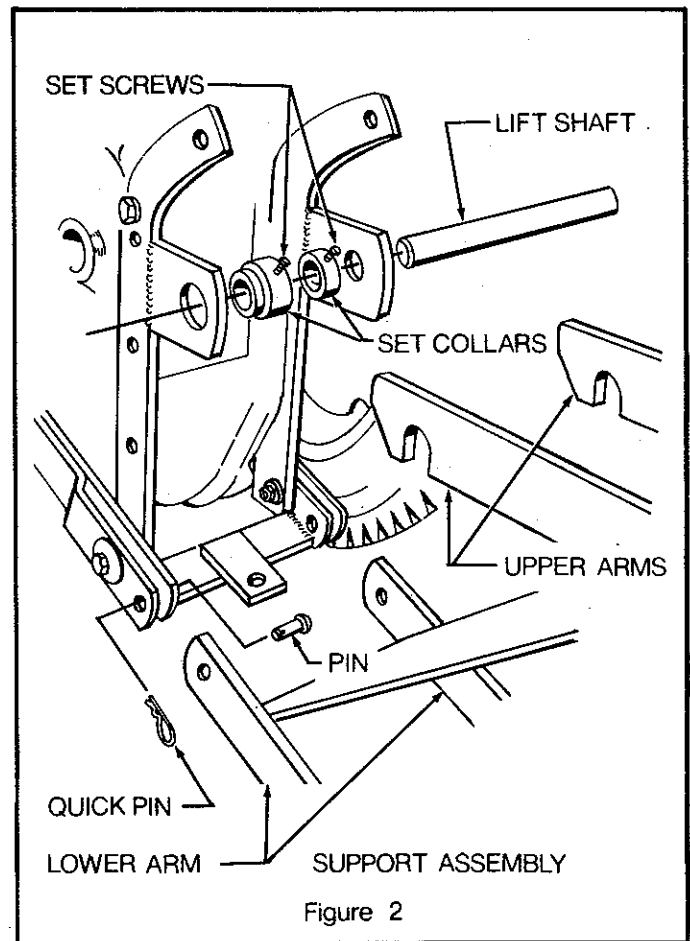


Figure 2

4. Move the PTO lever forward to the disengaged position. Install the drive belt over the drive pulley. Align the drive pulley with the pulleys in the belt drive cover. Check to insure that the belt is properly seated in the four pulleys. Adjust the belt stops as shown (Figure 3).

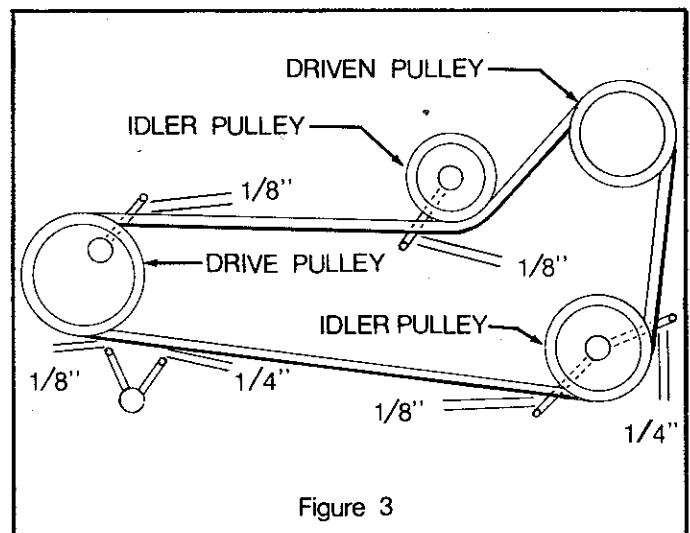


Figure 3

5. Attach the deflector to the blower housing with two  $3/8$ " self tapping screws (Figure 4).
6. Place the 6" diameter hose over the deflector and blower housing and secure with the smaller of the hose clamps using one  $1/4-20 \times 2$ " machine screw, lockwasher and hex nut (Figure 4).

- Mount one end of the 7" hose to the hose flange using one of the larger hose clamps and one 1/4-20 x 2" machine screw, lockwasher and hex nut (Figure 4).
- Slide the hose flange into the slots in the blower housing (Figure 4).

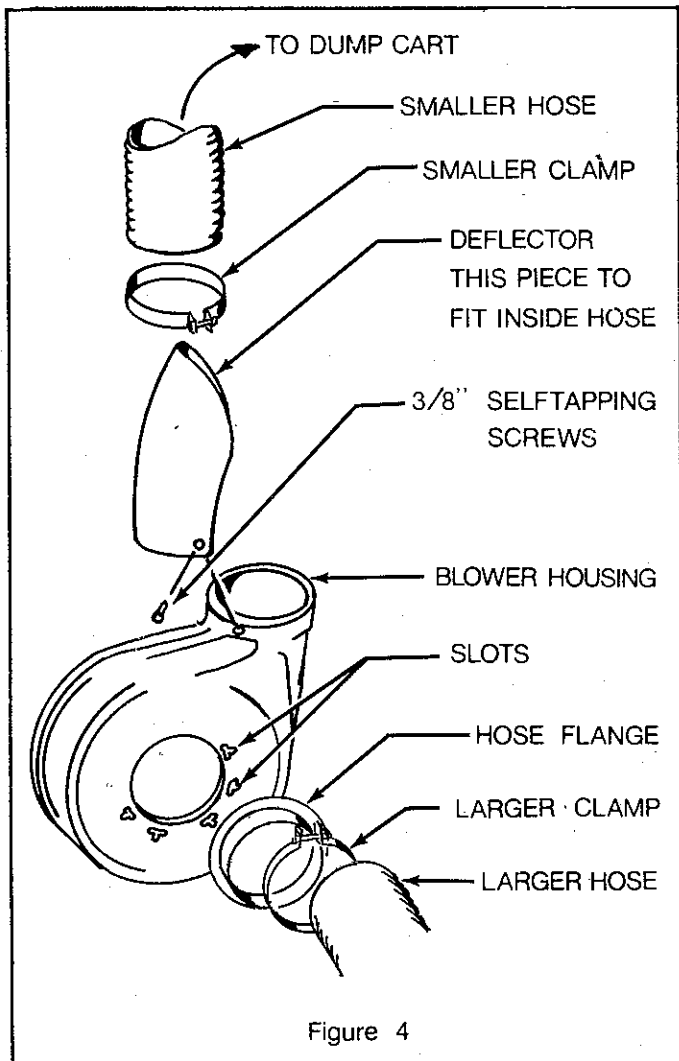


Figure 4

- Install the hose extension in the other end of the 7" hose. Secure with the other large hose clamp and one 1/4-20 x 2" machine screw, lockwasher and hex nut (Figure 5).

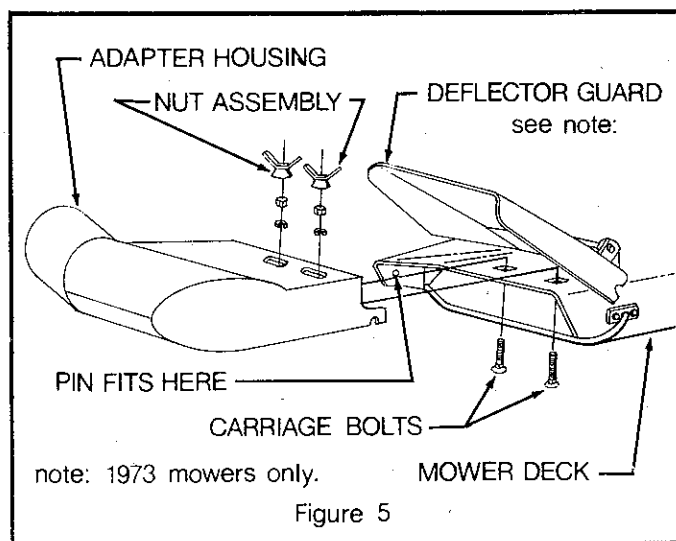


Figure 5

NOTE: 1973 mowers 42" and 48" are equipped with a deflector shield. To mount the adapter on these mowers, raise the mower to full height and remove the two carriage bolts holding the deflector in the position. Lift the deflector to a vertical position and install the adapter following assembly instructions No. 10 and No. 11. After this is done, fold the deflector shield down so that it rests on top of the adapter housing (Figure 6).

- Raise the mower to full height. Install the two 3/8-16 x 1" carriage bolts through the holes in the mower deck from underneath. Secure with two 3/8" lock washers and two 3/8-16 hex nuts (Figure 6).
- Insert the pin on the rear edge of the vacuum collector adapter through the hole in the rear edge of the mower deck. Locate the two large holes in the top of the adapter over the carriage bolts in the mower deck. Secure with the two nut assemblies (Figure 6).
- Slide the hose extension over the adapter discharge pipe (Figure 5).

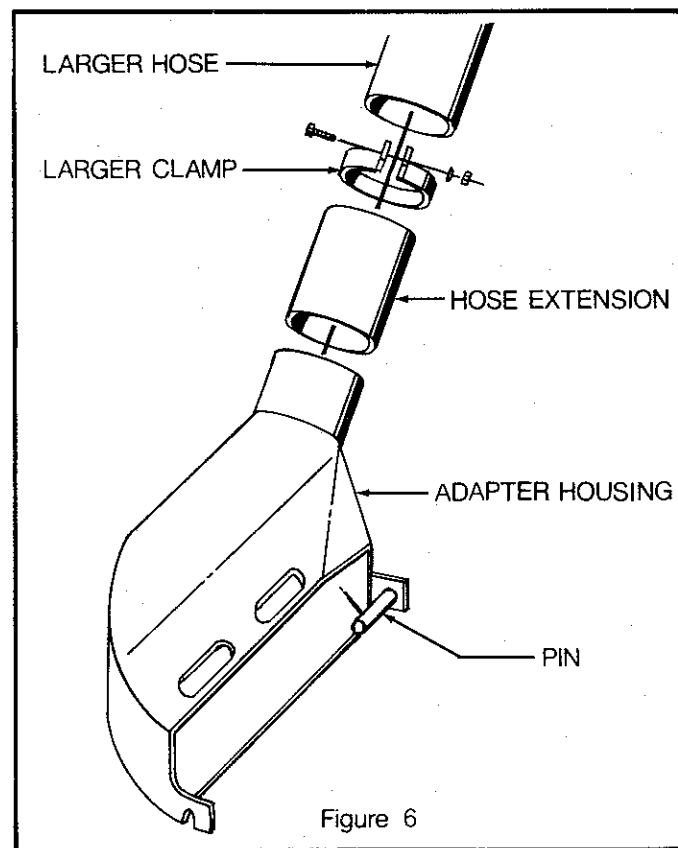
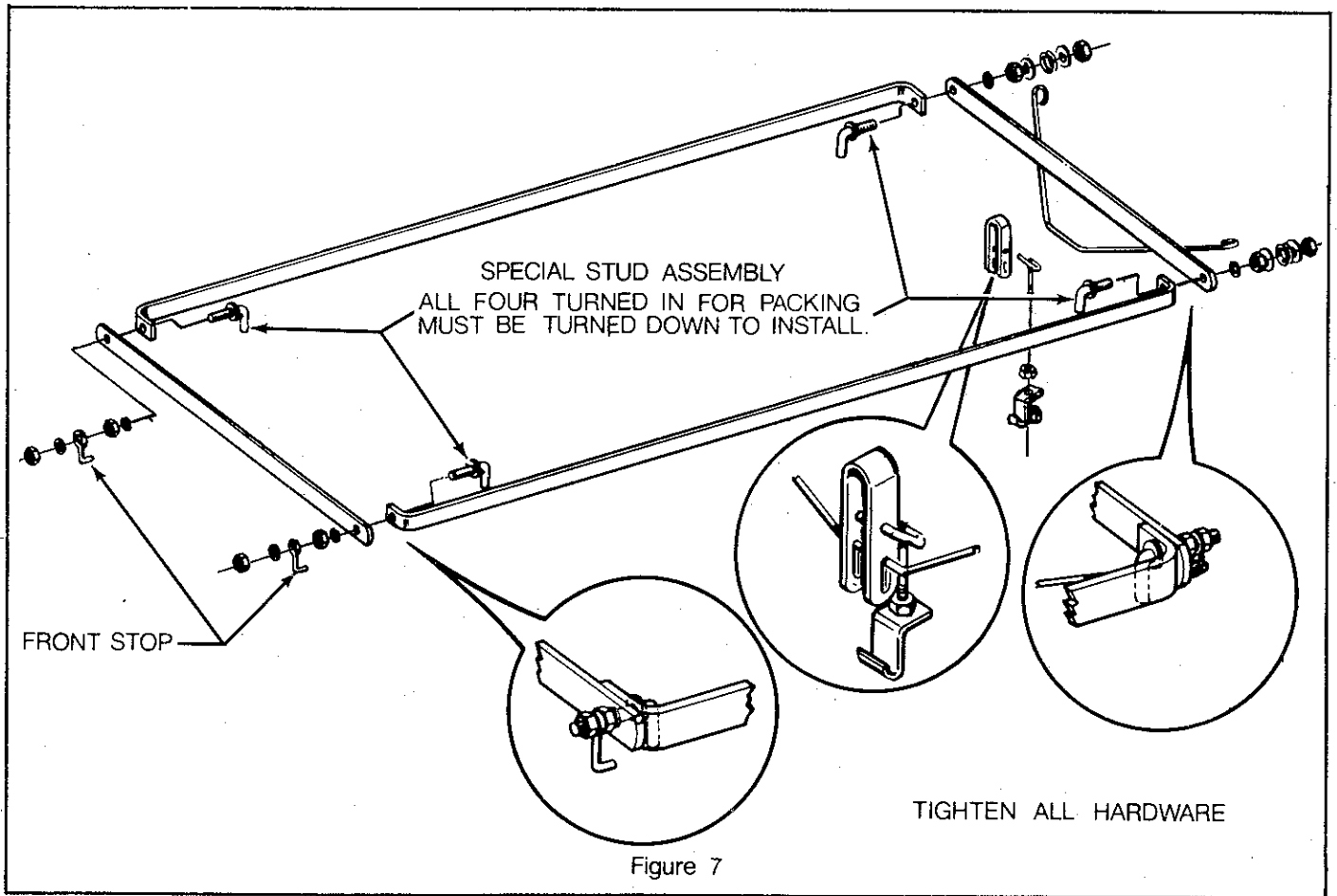


Figure 6

### Mounting the High Capacity and Low Profile Trailer Frames and Covers

There are two covers available for the HOMELITE dump cart for use with the HOMELITE vacuum collector system. These are the low profile trailer frame and cover and the high capacity trailer frame and cover. Both covers come preassembled to their frames.

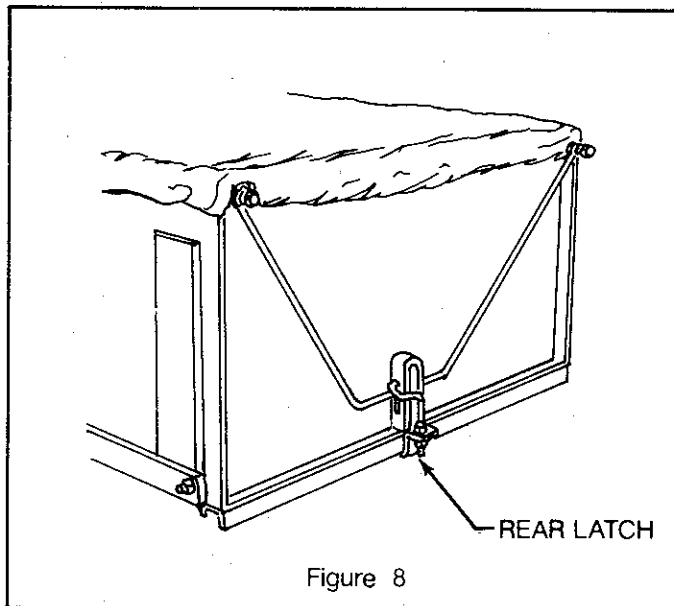
The low profile trailer frame and cover is assembled as follows:



1. Install the front stops on the cover front frame (the end with the hose sleeve). The special studs are inserted from the inside (Figure 7).

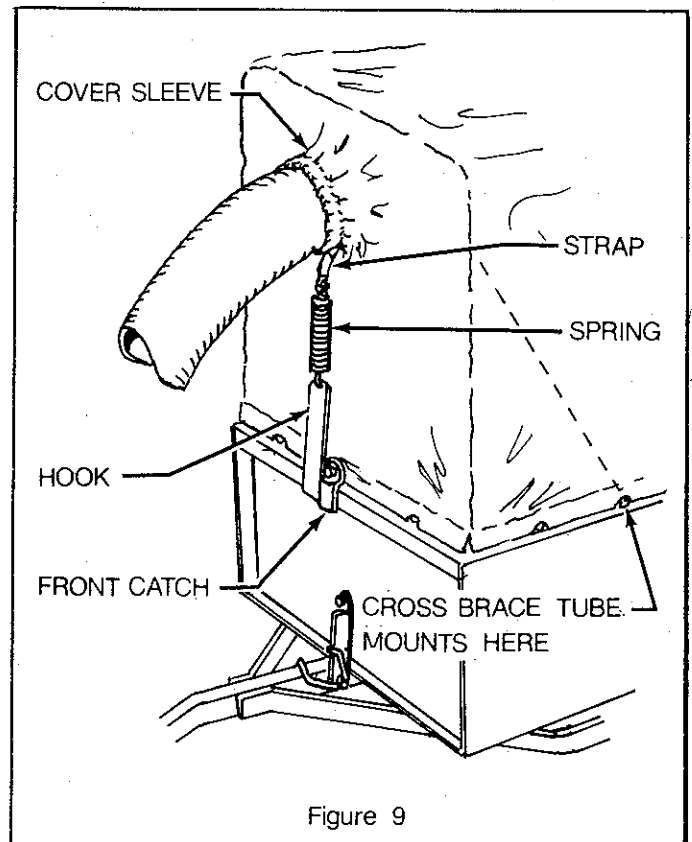
The high capacity trailer frame and cover is assembled to the dump cart as follows:

1. Remove the tailgate from the dumpcart.

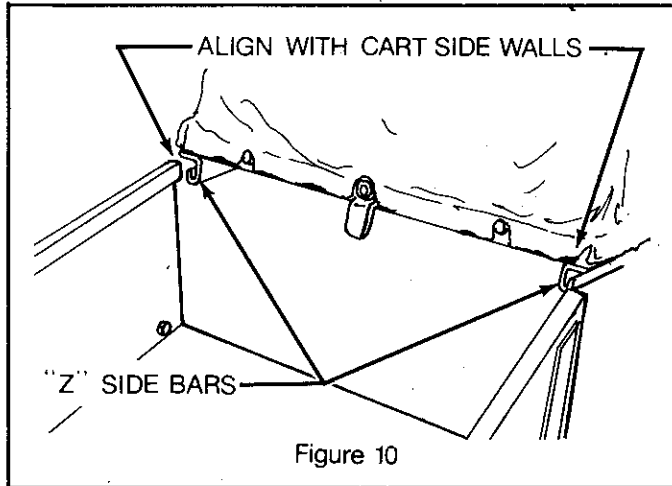


2. Lay the assembly on the cart with the canvas side flaps inside the cart. Engage the front stops over the box front edge, then pull the rear latch down and hook it under the box rear edge (Figure 8).

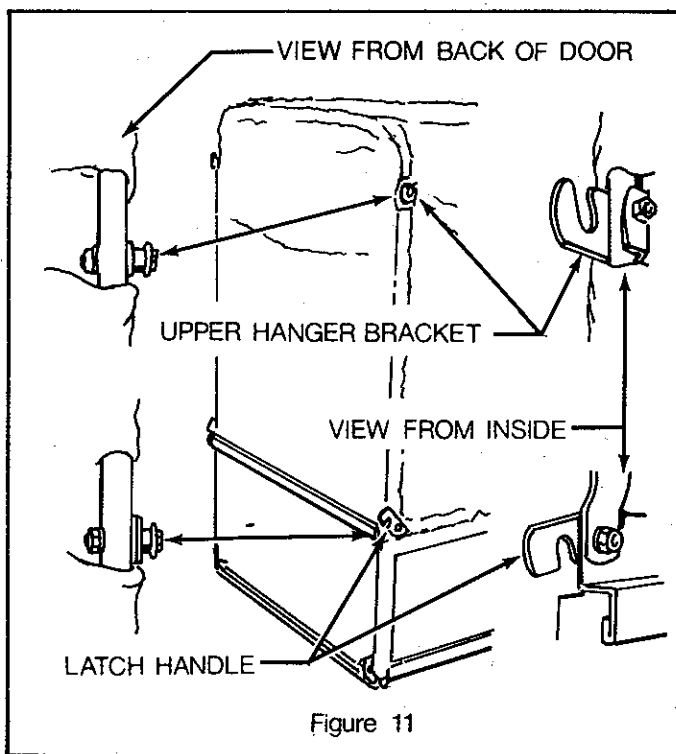
3. Place the 6" diameter hose in the cover sleeve and secure by tightening the strap in the sleeve.



2. Install the front catch using a 3/8-16 x 1" capscrew, flatwasher and locknut. Tighten the locknut so that it will hold securely but still allow the catch to pivot. (Figure 9).
3. Unfold the canvas and frame assembly so that the front and rear uprights are in a vertical position. Align the side "Z" bars with the cart side wall upper edges and slide the assembly forward onto the cart (Figure 10). Be sure that the front of the cover frame is toward the front of the cart. Turn the front catch down over the front edge of the cart.



4. Secure the four crossbrace tubes with the hardware attached (Figure 9).
5. Install the rear door catches (Figure 11.)

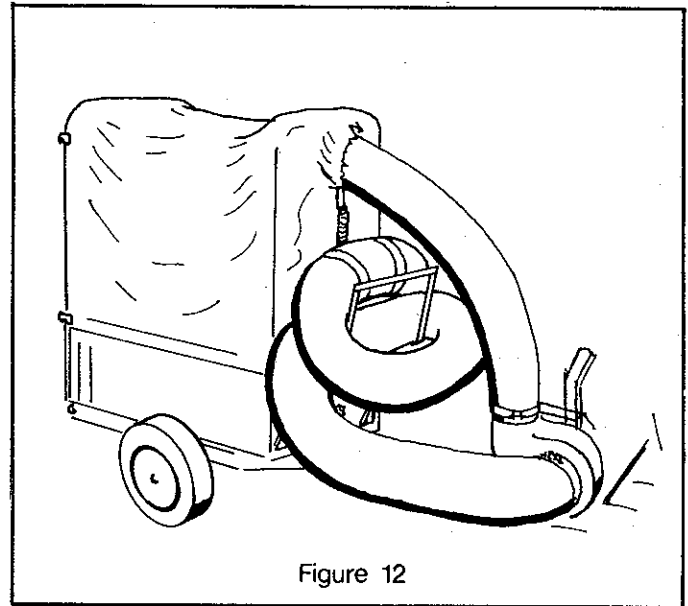


6. Engage the upper door frame side capscrews in the upper hanger brackets and push the bottom edge into place in the box bed. Engage the rear latches to the lower door frame side capscrews (Figure 11).

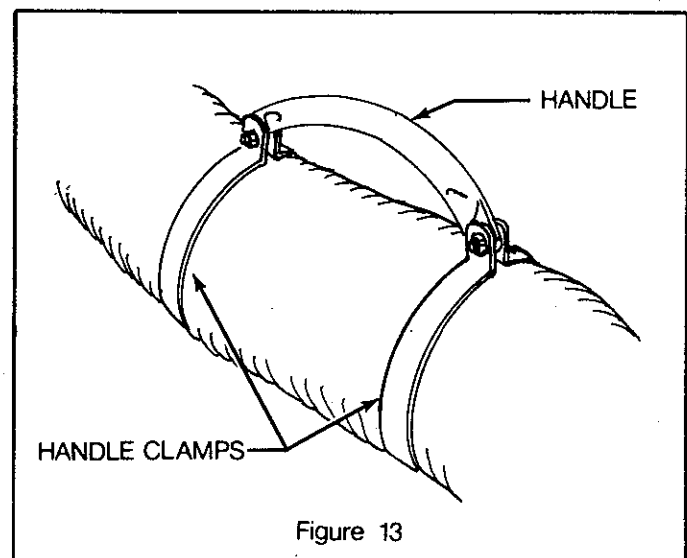
7. Place the 6" diameter hose in the cover sleeve and tighten the strap in the sleeve (Figure 9).
8. Secure one end of the spring to the strap in the cover sleeve by knotting the end of the strap to the spring. Insert the other end of the spring through the hole in the end of the hook. Then place the hook over the lip on the front of the dump cart body (Figure 9).

### Mounting the Roving Nozzle

The roving nozzle attaches to the blower inlet in place of the hose from the mower. For storage a rack is provided for installation on the front of the dump cart (Figure 12.)



1. Install the hose flange and a hose clamp on the plain end of the hose. Secure with one 1/4-20 x 3" machine screw, lockwasher and hex nut (Figure 4).
2. Install the hose handle clamps the desired distance from the pickup end of the hose and attach the handle. (Figure 13).



3. Attach the flanged end of the roving nozzle to the blower housing, seating the flange fully in the slots (Figure 4).
4. The storage rack is assembled and hung on the front of the cart. No hardware for mounting is required. (Figure 14).
5. Periodically check the hoses and blower housing to insure grass clippings have not accumulated which will affect the flow of grass to the dump cart.
6. Unzip the zipper on the canvas cover during normal operation to provide an air release in the cart enclosure. During some operations it may be desirable to have the zipper in the half closed or fully closed position.
7. After using, clean out grass in neck of hose and dump cart.

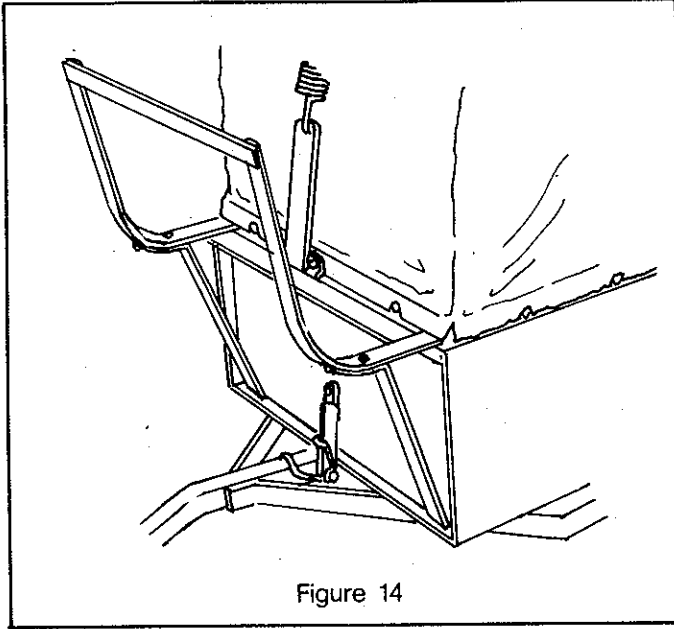


Figure 14

## Operation

1. Check to insure that the hoses are securely fastened to the blower housing, mower adapter and trailer cover sleeve.
2. Ground speed and throttle adjustment for the vacuum collector will vary according to the type of work being done. When making a shallow cut of fairly dry grass, a faster ground speed (third or fourth gear on manual transmission tractors) and lower throttle setting can be used. When collecting wet, thick or heavy material, use a slower ground speed (first or second gear on manual transmission tractors) and run the engine at near full or full throttle. This will produce increased vacuum.
3. When picking up leaves and tall grass, raise the mower to the highest cutting position. A second pass can then be made with the mower at a lower setting to complete the job.
4. In wet and extremely high grass, it may be necessary to pick up only half of the mower width to prevent the hoses from becoming clogged with grass.

**Caution:** Before disconnecting any hoses or performing any maintenance or adjustment work, be sure that the tractor engine is off and the tractor parking brake is engaged. Do not operate unit if either one or both hoses are not connected to the blower assembly.

## Trouble Shooting

If leaves and grass are not being picked up, check the following:

1. Run the engine at full throttle and use a slow ground speed (first gear or manual transmission tractors).
2. Check all hose connections to be sure they are tight.
3. Check hoses and blower housing to be sure they have not become plugged with grass or leaves.

If the hoses become plugged, check the following:

1. Grass may be too high or wet, use only half the mower width.
2. Use a slow ground speed and run the engine at full throttle (first gear on manual transmission tractors).
3. Raise the mower to full height for the first pass, lower it to make a second pass.

### After each use

Be sure to clean out the hoses and cart thoroughly, especially at the cover sleeve connection.

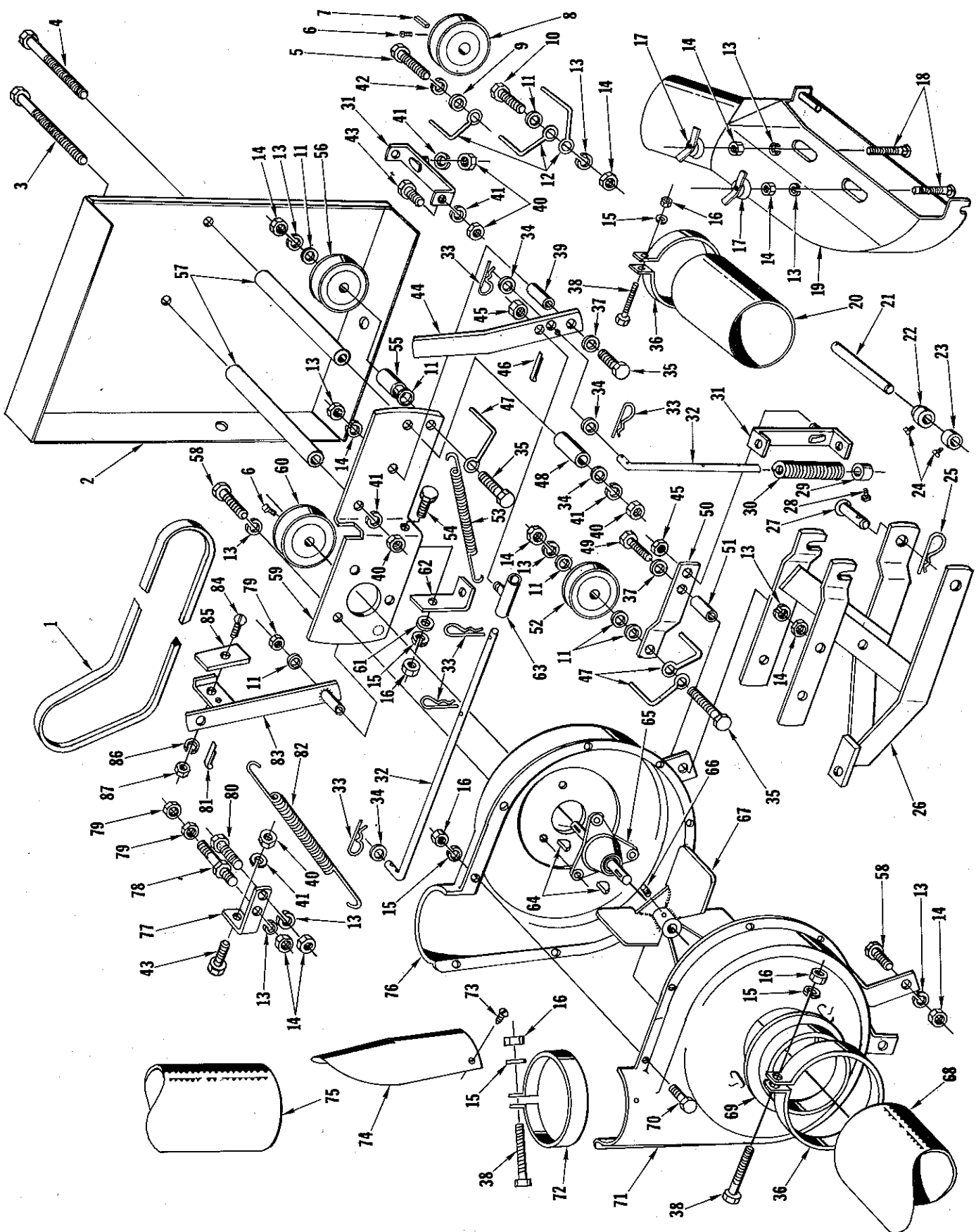
### Storage

Remove the door on the high capacity cart cover or the entire low profile cover and place it where air will circulate around it. This will prevent rotting of the fabric.

**HOMELITE®**

A Textron  
DIVISION

PORT CHESTER, NEW YORK, U.S.A. 10573

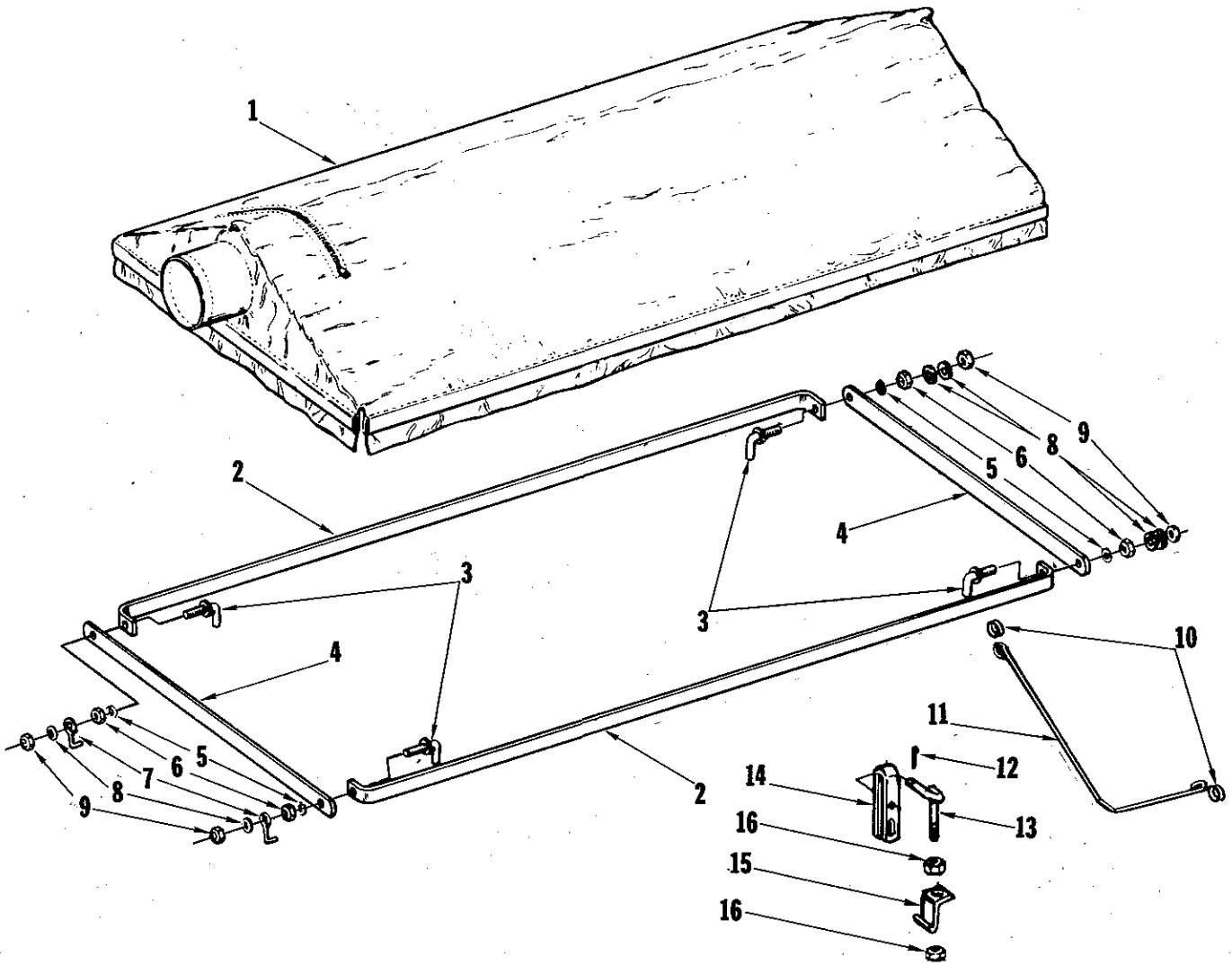




# P.T.O. Driven Vacuum Collector

No.	Description	Part No.	Qty.	No.	Description	Part No.	Qty.
1	"V" BELT-drive	LM-01650-48	1	47	STOP-belt	LM-16059-62	3
2	COVER-belt drive	LM-16056-59	1	48	SPACER	LM-01561-49	1
3	SCREW-cap, 5/16-18 x 2	LM-09193-55	1	49	SCREW-cap, 3/8-16 x 3	LM-09166-07	1
4	SCREW-cap, 5/16-18 x 4	LM-09221-04	1	50	ARM-idler	LM-16058-14	1
5	SCREW-cap, 7/16-14 x 1-1/4	LM-09234-71	1	51	PIVOT-idler arm	LM-16058-15	1
6	SCREW-set, 5/16-18' x 1/2 sq. hd. cup. pt.	LM-09287-21	2	52	PULLEY	LM-01010-96	1
7	KEY-parallel, flat, 3/16 x 3/16 x 1	LM-09058-50	1	53	SPRING-tension	LM-16028-94	1
8	PULLEY	LM-01642-02	1	54	SCREW-cap, 1/4-20 x 1	LM-09173-96	1
9	WASHER-flat, 7/16	LM-09184-30	1	55	SPACER	LM-16104-16	1
10	SCREW-cap, 3/8-16 x 1-1/8	LM-09193-58	1	56	PULLEY-idler	LM-01083-86	1
11	WASHER-flat, 13/32 x 7/8	LM-09249-40	7	57	SPACER-hood (R. H.)	LM-01065-77	2
12	STOP-belt	LM-16060-14	3	58	SCREW-cap, 3/8-16 x 1	LM-09077-31	5
13	WASHER-lock, 3/8	LM-09169-65	14	59	BRACKET ASSEMBLY-idler support	LM-16083-46	1
14	NUT-hex, 3/8-16	LM-09169-50	11	60	PULLEY	LM-16028-81	1
15	WASHER-lock, 1/4	LM-09169-64	13	61	WASHER-flat, 1/4	LM-09182-64	1
16	NUT-hex, 1/4-20	LM-09166-22	13	62	CLIP-baffle	LM-01081-86	1
17	NUT ASSEMBLY	LM-01230-60	2	63	GUIDE ASSEMBLY-rod	LM-16043-19	1
18	BOLT-carriage	LM-07030-07	2	64	KEY-Woodruff, 3/16 x 3/4	LM-09051-23	2
19	ADAPTER-vacuum collector	LM-16056-87	1	65	FLANGE ASSEMBLY-shaft & bearing	LM-01230-87	1
20	EXTENSION-hose	LM-01231-17	1	66	SCREW-set, 5/16-18 x 5/16 cup pt.	LM-09286-91	1
21	SHAFT-lift	LM-16076-87	1	67	FAN ASSEMBLY	LM-01230-15	1
22	COLLAR-set	LM-16075-53	1	68	HOSE-intake	LM-01742-65	1
23	COLLAR-set	LM-80210-10	1	69	FLANGE-hose	LM-01231-11	1
24	SCREW-set, 5/16-18 x 3/8	LM-09287-09	2	70	SCREW-cap, 1/4-20 x 1/2	LM-09082-95	9
25	PIN-quick	LM-81610-45	2	71	HOUSING ASSEMBLY-inlet half	LM-16057-97	1
26	SUPPORT ASSEMBLY-blower housing	LM-16074-53	1	72	CLAMP-hose	LM-01230-67	1
27	PIN	LM-01550-37	2	73	SCREW-self-tapping, #10 x 3/8	LM-09198-04	2
28	SCREW-set, 1/4-20 x 5/16	LM-09038-07	1	74	DEFLECTOR	LM-01231-07	1
29	COLLAR-set	LM-81910-22	1	75	HOSE-exhaust	LM-01742-64	1
30	SPRING-compression	LM-16024-05	1	76	HOUSING ASSEMBLY-blower half	LM-16058-00	1
31	GUIDE ASSEMBLY-rod	LM-01584-06	2	77	BRACKET-cover	LM-16056-60	1
32	ROD-control	LM-16098-11	2	78	STUD	LM-01083-72	1
33	PIN-quick	LM-01067-87	5	79	NUT-hex lock, 3/8-16	LM-09234-28	3
34	WASHER-flat, 11/32 x 7/8	LM-09284-74	4	80	SCREW-cap, 3/8-16 x 1-1/4	LM-09174-00	1
35	SCREW-cap, 3/8-16 x 1-1/2	LM-09193-61	3	81	PIN-cotter, 3/16 x 1	LM-09184-58	1
36	CLAMP-hose	LM-01230-65	2	82	SPRING-tension	LM-16033-48	1
37	WASHER-flat, 13/32 x 1-1/2	LM-09243-56	2	83	LEVER ASSEMBLY-brake	LM-16059-61	1
38	SCREW-machine, 1/4-20 x 2	LM-09174-56	3	84	SCREW-machine, #10-24 x 5/8	LM-09262-67	1
39	SPACER-pivot	LM-16062-33	1	85	BRAKE-sheave	LM-16105-90	1
40	NUT-hex, 5/16-18	LM-09173-72	5	86	WASHER-lock, #10	LM-09173-65	1
41	WASHER-lock, 5/16	LM-09173-56	5	87	NUT-hex, #10-24	LM-09162-21	1
42	WASHER-lock, 7/16	LM-09181-99	1				
43	SCREW-cap, 5/16-18 x 3/4	LM-09173-97	2		Accessory		
44	LEVER-PTO	LM-16058-10	1				
45	NUT-hex lock, 5/16-18	LM-09233-62	2		PAINT-black (12 oz. spray can)	22772	
46	PIN-cotter, 3/32 x 3/4	LM-09184-47	1				

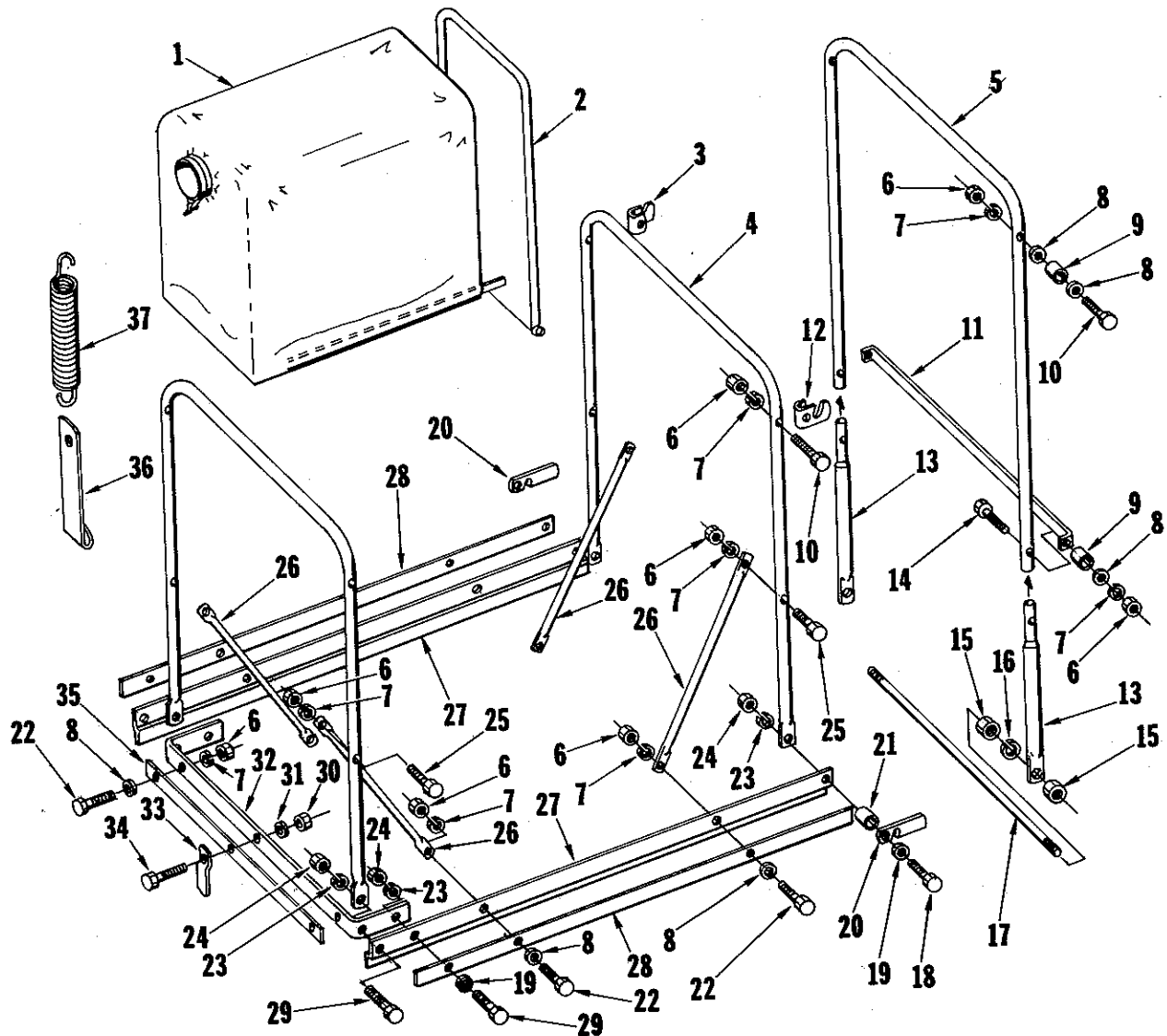
# Low Profile Trailer frame & Cover



No.	Description	Part No.	Qty.
1	COVER	LM-01231-36	1
2	SIDE MEMBER-frame	LM-01231-30	2
3	STUD ASSEMBLY-special	LM-01231-32	4
4	END BRACKET-frame	LM-01231-31	2
5	WASHER-lock, 5/16	LM-09173-56	4
6	NUT-hex, 5/16-18	LM-09173-72	4
7	STOP	LM-01231-34	2
8	WASHER-flat, 5/16	LM-09176-42	8
9	NUT-hex lock, 5/16-18	LM-09180-05	4
10	LINK-repair	LM-01701-34	2
11	BAIL	LM-01700-03	1
12	PIN-cotter, 1/8 x 1	LM-09184-52	1
13	ROD-latch	LM-01700-01	1
14	LEVER	LM-01700-02	1
15	LATCH	LM-01700-00	1
16	NUT-hex lock, 3/8-16	LM-09180-06	2

ALWAYS FURNISH MODEL AND SERIAL NUMBER WHEN ORDERING PARTS.

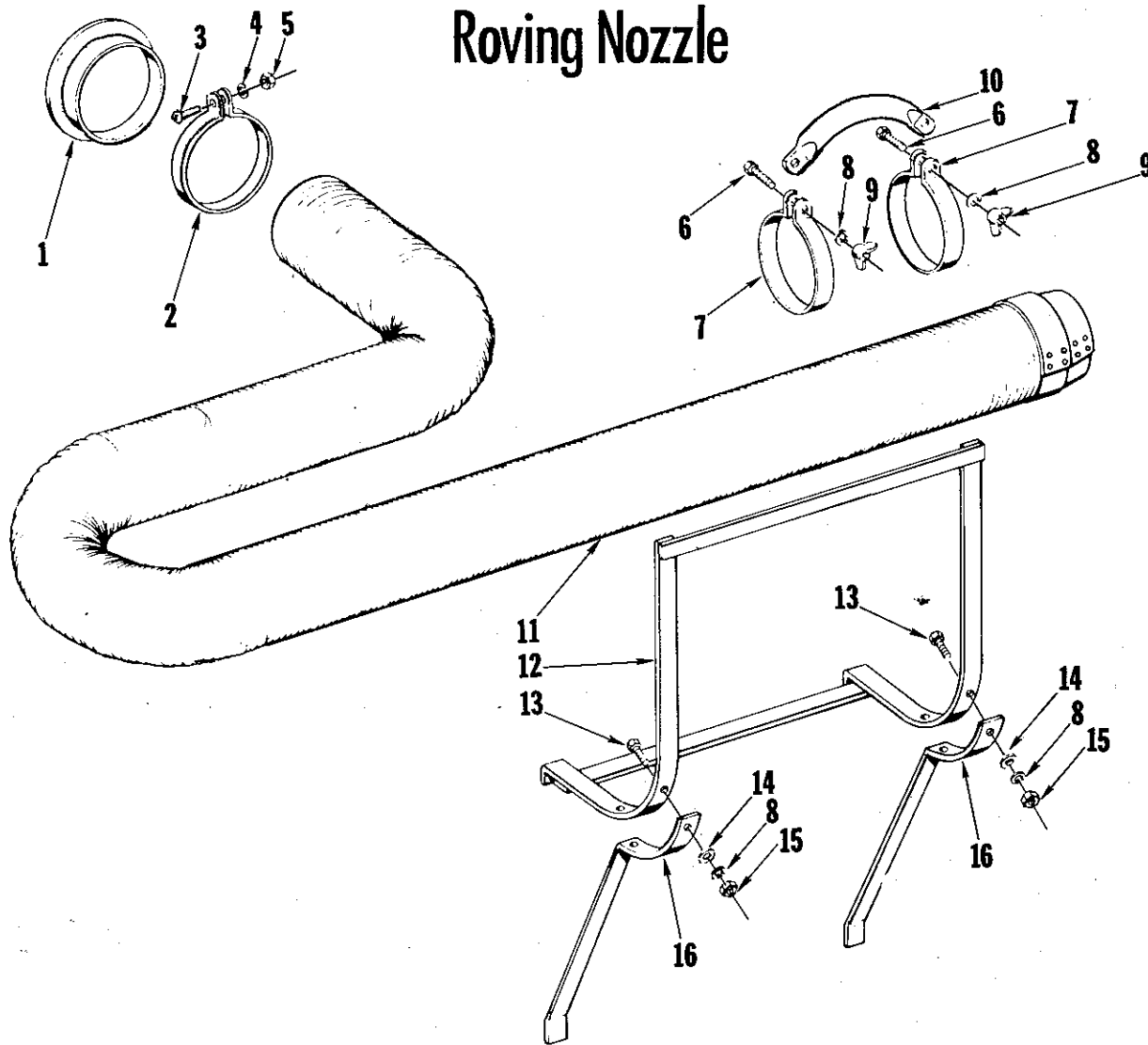
# High Capacity Trailer Frame & Cover



No.	Description	Part No.	Qty.	No.	Description	Part No.	Qty.
1	HOOD-cart	LM-01230-49	1	20	LATCH-rear, door	LM-01230-40	2
2	COVER-door	LM-01230-51	1	21	SPACER	LM-01561-50	2
3	CATCH-door, (R. H.)	LM-01230-47	1	22	SCREW-cap, 1/4-20 x 3/4	LM-09160-19	6
4	UPRIGHT-front, rear	LM-01230-38	2	23	WASHER-lock, 5/16	LM-09173-56	6
5	DOOR-rear, top	LM-01230-46	1	24	NUT-hex, 5/16-18	LM-09173-72	6
6	NUT-hex, 1/4-20	LM-09166-22	16	25	SCREW-cap, 1/4-20 x 1-1/4	LM-09082-97	4
7	WASHER-lock, 1/4	LM-09169-64	16	26	TUBE-crossbrace	LM-01726-52	4
8	WASHER-flat, 1/4	LM-09173-77	12	27	BAR-side	LM-01230-36	2
9	SPACER	LM-01230-45	4	28	STRIP-hold-down, side	LM-01230-52	2
10	SCREW-cap, 1/4-20 x 1-1/2	LM-09182-40	4	29	SCREW-cap, 5/16-18 x 1	LM-09164-31	4
11	BAR-door, rear	LM-01230-44	1	30	NUT-hex lock, 3/8-16	LM-09180-06	1
12	CATCH-door (L. H.)	LM-01230-48	1	31	WASHER-flat, 3/8	LM-09173-78	1
13	TUB E-door, rear	LM-01230-42	2	32	BAR-front	LM-01230-37	1
14	SCREW-cap, 1/4-20 x 1-3/4	LM-09193-16	2	33	BRACKET	LM-01120-60	1
15	NUT-hex, 1/2-13	LM-09169-51	4	34	SCREW-cap, 3/8-16 x 1	LM-09077-31	1
16	WASHER-lock, 1/2	LM-09169-66	2	35	STRIP-hold-down, front	LM-01230-53	1
17	ROD-door, rear	LM-01230-43	1	36	HOOK	LM-01231-35	1
18	SCREW-cap, 5/16-18 x 7/8	LM-09193-19	2	37	SPRING	LM-81110-47	1
19	WASHER-flat, 5/16	LM-09176-42	4				

ALWAYS FURNISH MODEL AND SERIAL NUMBER WHEN ORDERING PARTS.

# Roving Nozzle



No.	Description	Part No.	Qty.
1	FLANGE-hose	LM-01231-11	1
2	CLAMP-hose	LM-01230-65	1
3	SCREW-machine, 1/4-20 x 3	LM-09258-26	1
4	WASHER-lock, 1/4	LM-09169-64	1
5	NUT-hex, 1/4-20	LM-09166-22	1
6	SCREW-cap, 5/16-18 x 3/4	LM-09173-97	2
7	CLAMP-hose	LM-01231-28	2
8	WASHER-lock, 5/16	LM-09173-56	6
9	NUT-wing, 5/16-18	LM-09184-68	2
10	HANDLE-hose	LM-01231-29	1
11	HOSE ASSEMBLY	LM-01231-27	1
12	CARRIER ASSEMBLY-hose	LM-01231-22	1
13	SCREW-cap, 5/16-18 x 7/8	LM-09193-19	4
14	WASHER-flat, 5/16	LM-09176-42	2
15	NUT-hex, 5/16-18	LM-09173-72	4
16	SUPPORT-carrier	LM-01231-25	2

ALWAYS FURNISH MODEL AND SERIAL NUMBER WHEN ORDERING PARTS.

**HOMELITE®**

A **Textron** DIVISION, PORT CHESTER, N.Y. 10573