



**AKRON<sup>®</sup>**  
**ECHOCARDIOGRAPHY**  
**COUCH**

Models  
7242

**SERVICE MANUAL**

794-010

---

## **General Maintenance including Gas Strut**

---

*It is recommended that the following checks and adjustments are carried out at minimum of twice a year and more frequently if the couch is in constant use.*

1. The framework of the couch is of steel construction and coated with an epoxy paint finish. This is resistant to most cleaning substances.
2. The major pivot points need to be lubricated sparingly with oil. Care should be taken to keep oil away from the upholstery.
3. All nuts should be checked and tightened where necessary. Care should be taken not to over tighten the nuts on the pivot points as this may cause them to bind.
4. Air tubes should be checked to ensure that they are not pinched.

5. **Disconnect the mains supply and check the following;**

Note: - all electrical should be carried out by a suitably qualified person.

Electric cables and mains plug should be inspected for damage and replaced where necessary. In addition, electrical safety checks for earth continuity (class I equipment only) and earth leakage checks should also be carried out.

The correct value fuse of 5 amps and ASTA approved to BS1362 MUST be used.

6. The upholstered top is manufactured using fire retardant vinyl. This tends to go brittle if oil or grease (including body oils) are left on it. The upholstery should be cleaned with warm soapy water after use. The use of detergents is not recommended although a suitable sterilisation fluid is acceptable. Use of a couch cover or towel will help prolong the life of the upholstery.
7. Woodscrews, used to secure the upholstery, should be checked and tightened or replaced where necessary.
8. The hinge pins on the head and foot sections should be checked to ensure that they have not moved within the hinge tubes. Ensure Circlip is located fully in groove in pin. If the Circlip is not located correctly push firmly into groove to secure pin.
9. Gas strut controls should be checked for a small amount of clearance between the operating flap and the release pin, throughout the range of movement. Should clearance be inadequate, or the top sinks whilst in use, the following adjustments should be made; firmly grasp the body of the strut and rotate in an anti-clockwise direction. Check for clearance and repeat as necessary.

Should the gas strut fail to operate, refer to the above adjustment but rotate in a clockwise direction.

---

**Manufacturers Details**


---

Huntleigh Healthcare  
 Akron Products Division  
 1 Farthing Road  
 Ipswich  
 Suffolk  
 IP1 5AP  
 England

Tel. (0) 1473 461042  
 Fax. (0) 1473 462924

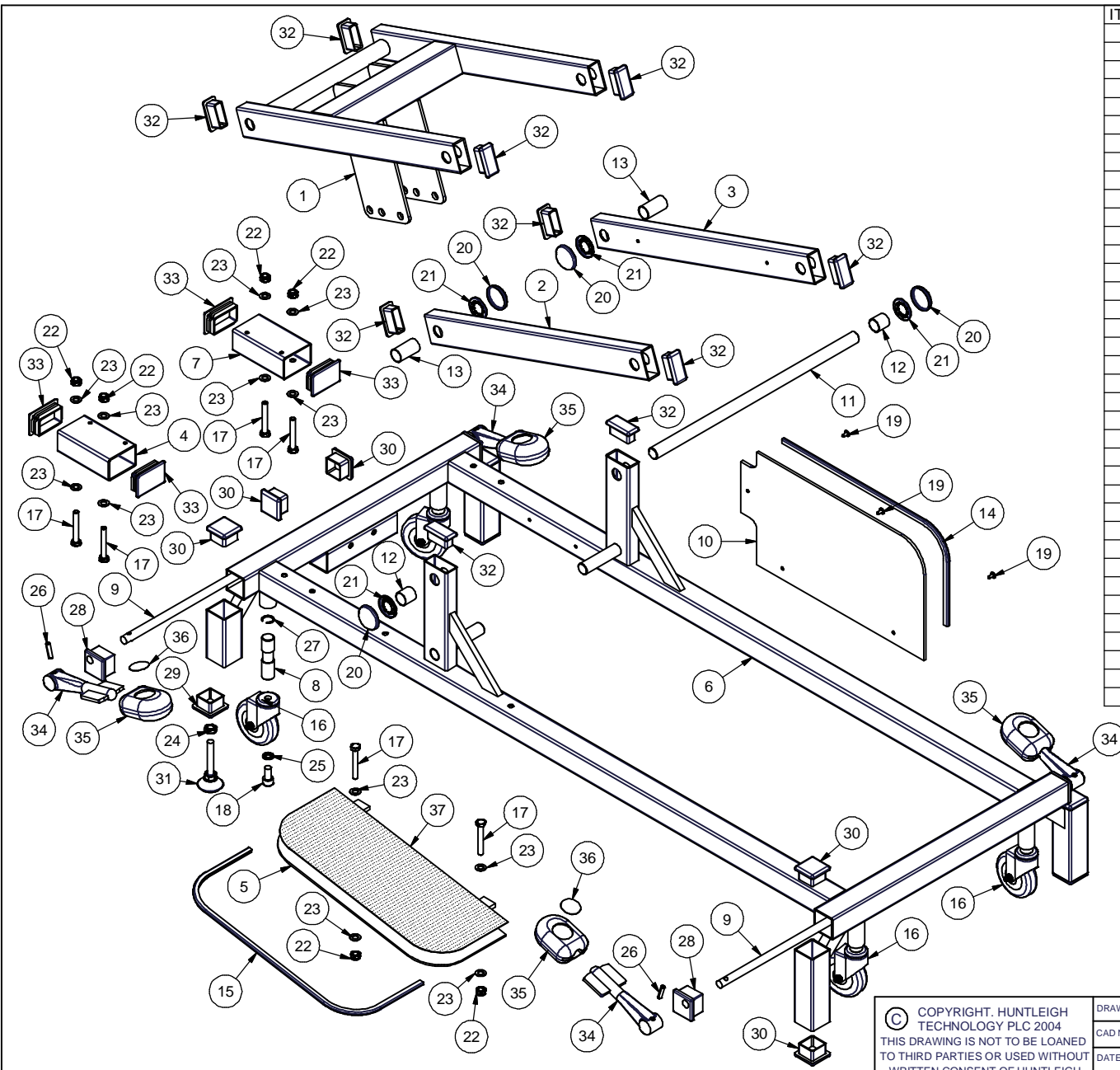
Huntleigh Healthcare, Akron Products Division  
 A Member of the Huntleigh Technology PLC Group of Companies  
 © Huntleigh Technology PLC 2005.

---

**Revision History**


---

DOCUMENT	ISSUE	DCN No.	SIGNED	DATE
All Pages	1	-	P. Hammond	23/10/98
2M3265Z	2	889	P. Hammond	01/12/98
2M3266Z 2M3267Z	3	893	P. Hammond	08/12/98
2M5502Z	4	896	P. Hammond	28/01/99
2M5502Z	5	907	G. Mullenger	27/07/99
2M5502Z	6	908	G. Mullenger	08/10/99
2M3266Z 2M3267Z	7	930	G. Mullenger	29/03/00
2M3265Z	8	980	J. Barker	01/11/01
2M5502Z A7291	9	998	J. Barker	10/05/02
2M3265Z	10	1043	J. Barker	13/01/03
2M5502Z 2M3265Z	11	1070	J. Barker	23/09/03
2M5502Z	12	1101	J. Barker	31/03/04
2M3265Z	13	1117	J. Barker	07/10/04
2M5502Z	14	1112	J. Barker	10/12/04



ITEM	QTY	PART No.	ISSUE No.	DESCRIPTION
1	1	3A2081Z	4	H Section
2	1	3A2085Z	0	Link Bar
3	1	3A3262Z	0	Drilled Link Bar
4	1	3A3652Z	0	LH Control Unit Mounting Member
5	1	3A3653Z	1	Footplate
6	1	3A3654Z	3	Echocardiology Base Frame
7	1	3A3660Z	0	RH Control Unit Mounting Member
8	4	3A9406Z	0	Short Wheel Plunger
9	2	3E0112Z	2	Wheel Cam
10	1	3F3659Z	0	Foot Guard
11	1	3G2089Z	2	437mm Pivot Pin
12	2	3G2092Z	1	22mm Spacer Sleeve
13	2	3G3213Z	0	40.5mm Spacer Sleeve
14	1	3J3661Z	0	Rubber Trim (490mm)
15	1	3J3662Z	0	Rubber Trim (625mm)
16	4	5H0402A	0	3" Castor
17	6	5J7865A	0	M8x55 Hex Ht Bolt
18	4	5J8058R	0	M10x20 Socket Head Set screw
19	3	5K0305R	0	No 8x3/8 Posi Flange Head Screw
20	4	5L0707L	0	3/4 Grey End Cap
21	4	5L0906Z	0	3/4 Open Starlock
22	6	5L3119C	0	M8 Nyloc Nut
23	12	5L3162K	0	M8 Washer Flat Form B
24	1	5L3319A	0	M10 Half Nut
25	4	5L3351K	0	M10 Spring Washer
26	4	5M0408C	0	1/4"x1" Seloc Pin
27	4	5M4296S	0	1700x19 Spring Ring
28	4	5N3737M	0	40x40 Moulded End Cap
29	1	5N3737V	0	40x40x2.5mm Insert
30	9	5N3737Y	0	40x40x2.4mm Insert
31	1	5N3782U	0	10mm Foot Adjustment Stud
32	10	5N3944Z	0	50x25x2.5 Grey Insert
33	4	5N4137Y	0	60x40x3 Insert
34	4	5T0028Z	1	Nylon Foot Rubber
35	4	5T3200Z	0	Pedal Rubber
36	4	5U1066Z	1	Pedal Sticker
37	1	5Y5600Z	0	Resilient Anti-Slip

CHECKLIST				
<b>DCL166</b>				

© COPYRIGHT, HUNTLEIGH TECHNOLOGY PLC 2004 THIS DRAWING IS NOT TO BE LOANED TO THIRD PARTIES OR USED WITHOUT WRITTEN CONSENT OF HUNTLEIGH AKRON LIMITED	DRAWN GMullenger CAD NO 2M3265Z DATE 06/08/2004 CHECKED & APPROVED	1 FARTHING ROAD IPSWICH, SUFFOLK IP1 5AP, ENGLAND TEL: +44(0)1473 461042 FAX: +44(0)1473 462924 www.huntleigh-akron.com	REVISION STATUS				
			ISSUE	5	6	7	8
			DATE	8/01	11/02	7/03	8/04
			DCN	980	1043	1070	1117
TITLE <b>Echocardiology Base Frame Module</b>		ASSEMBLY <b>2M3265Z</b>			ISSUE <b>8</b>		



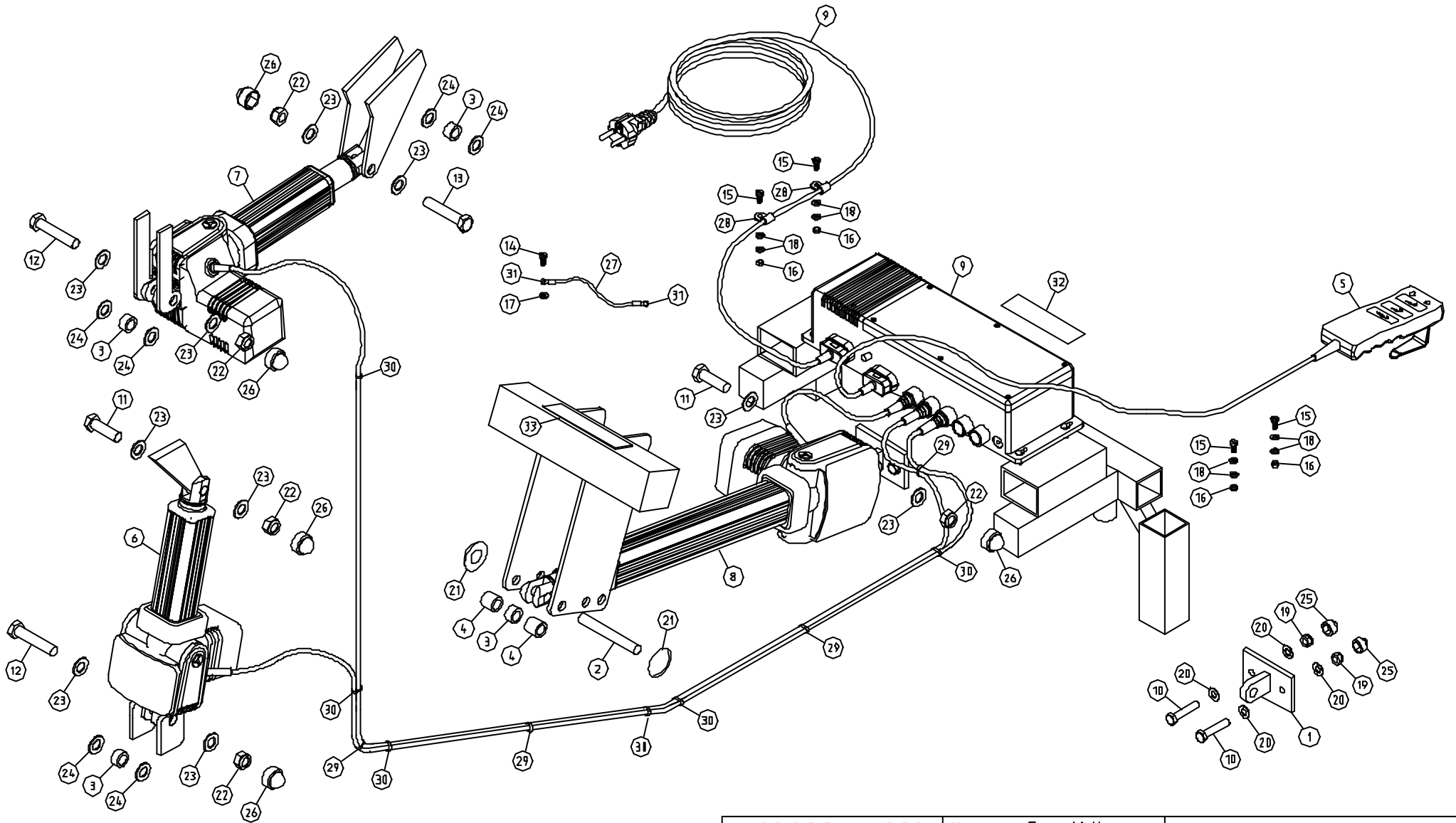
**PARTS LIST**

**230v TRIPLE MAGNETIC RAM KIT FOR ECHOCARDIOLOGY  
WITH BATTERY BACKUP**

2M3266Z – Issue 04

Reference Number	Description	Quantity	Part Number	Issue Status
1	Motor Mounting Bracket	1	3A2006Z	0
2	Ram Fixing Pin	1	3A2088Z	0
3	10mm Spacer	4	3G9434Z	0
4	10mm Spacer	2	3G9437Z	0
5	Magnetic Handswitch	1	5F4800Z	0
6	MAX10-B100295A161M0-000	1	5F8100Z	0
7	MAX10-B100295A202M0-000	1	5F8200Z	0
8	MAX30-A200415A04200-000	1	5F8300Z	0
9	230v/24v Magnetic Control Box	1	5F8500Z	0
10	M8 x 60mm Hex Bolt	2	5J7866A	0
11	M12 x 50mm Hex Bolt	2	5J8264A	0
12	M12 x 60mm Hex Bolt	2	5J8266A	0
13	M12 x 65mm Hex Bolt	1	5J8267A	0
14	No.10 x 1/2" Pan Head Screw	1	5K0407X	0
15	M5 x 20mm Pan Head Screw	4	5K1137N	0
16	M5 Nyloc Nut	4	5L2819C	0
17	5mm Shakeproof Washer	1	5L2855K	0
18	M5 Flat Washer	8	5L2865K	0
19	M8 Nyloc Nut	2	5L3119C	0
20	M8 Flat Washer	4	5L3162K	0
21	12mm Starlock Capped	2	5L3503Z	0
22	M12 Nyloc Nut	5	5L3519C	0
23	M12 Flat Washer	10	5L3562K	0
24	M12 Nylon Washer	6	5L3577X	0
25	M8 Nut Cap	2	5N0028X	0
26	M12 Nut Cap	5	5N0030X	0
27	Earth Wire 1.5mm	0.12	5S0216Z	0
28	P Clip	2	5S0310Z	0
29	Cable Tie	4	5S0315Z	0
30	Push Mounted Cable Tie	6	5S0318Z	0
31	5mm Crimped Eyelet	2	5S0335Z	0
32	Huntleigh Akron Label	1	5U1006Z	2
33	Serial Number Label	1	760.43	1

Issue	1	2	3	4
Date	9/97	4/98	12/98	3/00
E.C.N.	-	855	893	930



© COPYRIGHT - HUNTLEIGH  
 TECHNOLOGY PLC. 2000  
 THIS DRAWING IS NOT TO BE  
 REPRODUCED OR LOANED TO  
 THIRD PARTIES OR USED WITH  
 OUT WRITTEN CONSENT OF HUNTLEIGH  
 AKRON LTD.

DRAWN Gary Mullenger  
 DATE 23/3/00  
 AutoCAD No. 2M3266Z  
 CHECKED  
 APPROVED



1 FARTHING ROAD  
 IPSWICH IP1 5AP  
 ENGLAND  
 TEL: +44 1011473 749544  
 FAX: +44 1011473 463096

TITLE:  
**280v Echo Triple Magnetic Ram Kit**  
 ASSEMBLY: **2M3266Z**

ISSUE	1	2	3	4
DATE	10/97	3/98	12/98	3/00
ECN No.	-	855	893	930



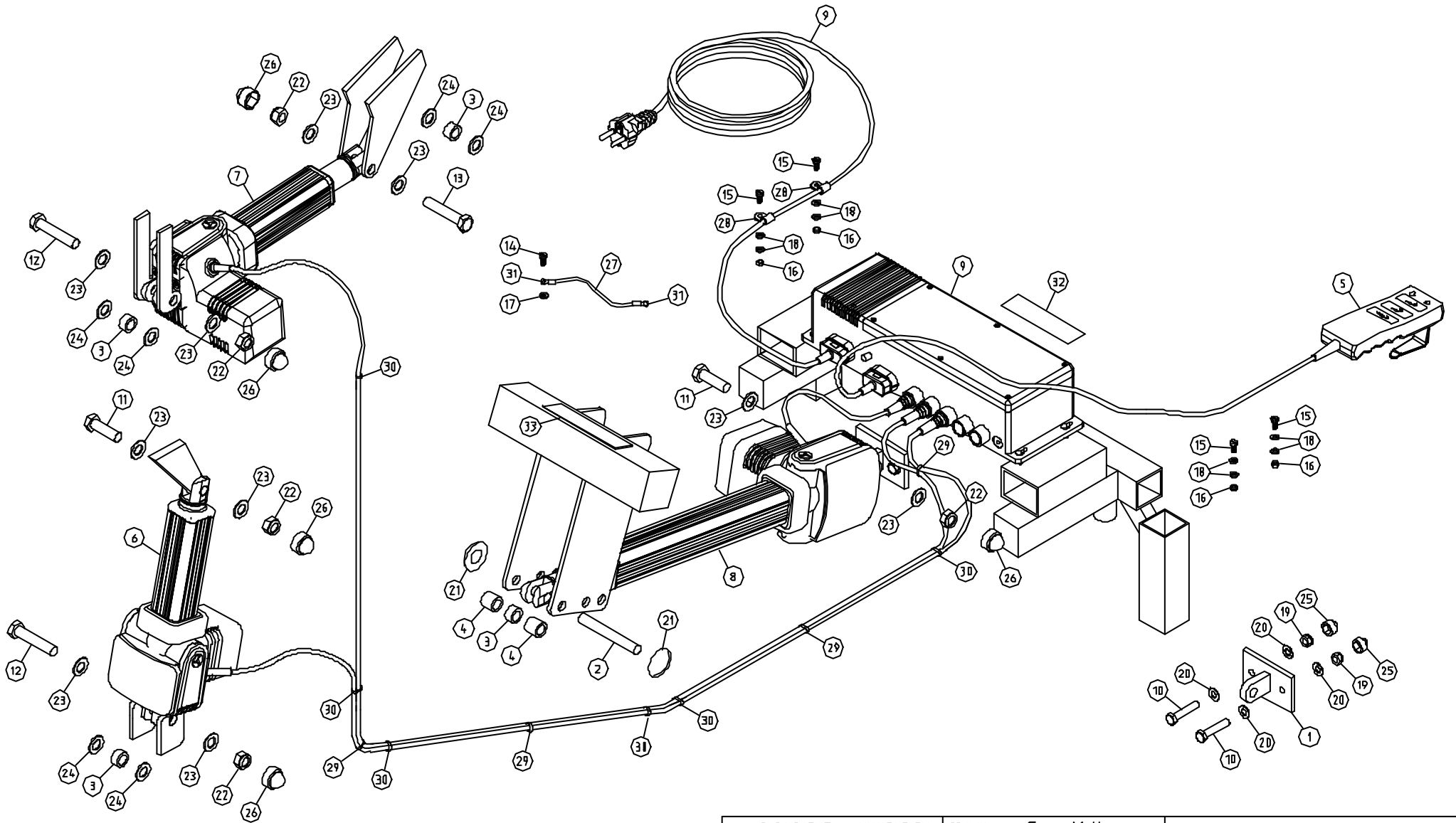
**PARTS LIST**

**115v TRIPLE MAGNETIC RAM KIT FOR ECHOCARDIOLOGY  
WITH BATTERY BACKUP**


2M3267Z – Issue 04

Reference Number	Description	Quantity	Part Number	Issue Status
1	Motor Mounting Bracket	1	3A2006Z	0
2	Ram Fixing Pin	1	3A2088Z	0
3	10mm Spacer	4	3G9434Z	0
4	20mm Spacer	2	3G9437Z	0
5	Magnetic Handswitch	1	5F4800Z	0
6	MAX10-B100295A161M0-000	1	5F8100Z	0
7	MAX10-B100295A202M0-000	1	5F8200Z	0
8	MAX30-A200415A04200-000	1	5F8300Z	0
9	115v/24v Magnetic Control Box	1	5F8400Z	0
10	M8 x 60mm Hex Bolt	2	5J7866A	0
11	M12 x 50mm Hex Bolt	2	5J8264A	0
12	M12 x 60mm Hex Bolt	2	5J8266A	0
13	M12 x 65mm Hex Bolt	1	5J8267A	0
14	No.10 x 1/2" Pan Head Screw	1	5K0407X	0
15	M5 x 20mm Pan Head Screw	4	5K1137N	0
16	M5 Nyloc Nut	4	5L2819C	0
17	5mm Shakeproof Washer	1	5L2855K	0
18	M5 Flat Washer	8	5L2865K	0
19	M8 Nyloc Nut	2	5L3119C	0
20	M8 Flat Washer	4	5L3162K	0
21	12mm Starlock Capped	2	5L3503Z	0
22	M12 Nyloc Nut	5	5L3519C	0
23	M12 Flat Washer	10	5L3562K	0
24	M12 Nylon Washer	6	5L3577X	0
25	M8 Nut Cap	2	5N0028X	0
26	M12 Nut Cap	5	5N0030X	0
27	Earth Wire 1.5mm	0.12	5S0216Z	0
28	P Clip	2	5S0310Z	0
29	Cable Tie	4	5S0315Z	0
30	Push Mounted Cable Tie	6	5S0318Z	0
31	5mm Crimped Eyelet	2	5S0335Z	0
32	Huntleigh Akron Label	1	5U1006Z	2
33	Serial Number Label	1	760.49	1

Issue	1	2	3	4
Date	9/97	4/98	12/98	3/00
E.C.N.	-	855	893	930



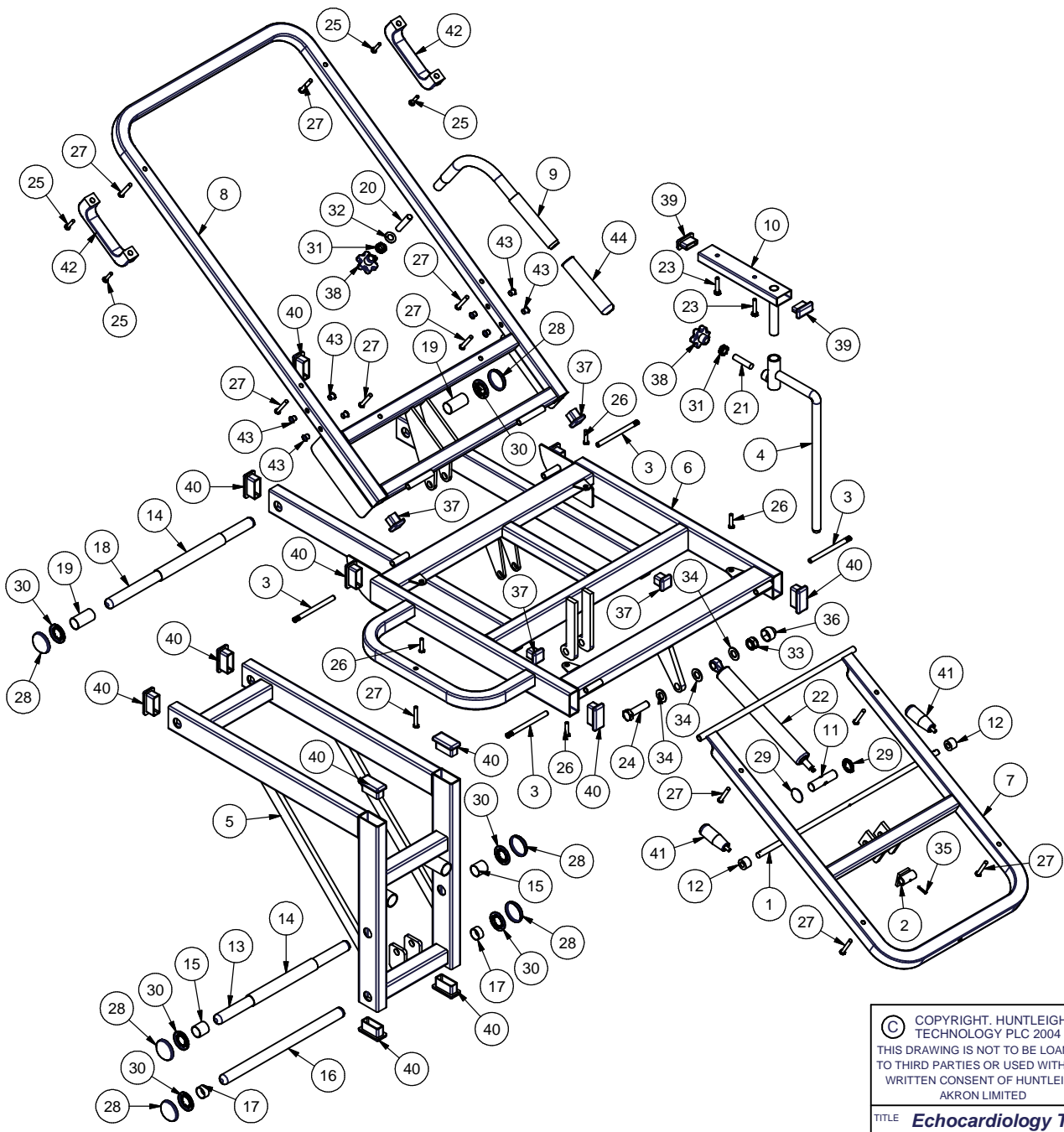
© COPYRIGHT - HUNTLEIGH TECHNOLOGY PLC. 2000  
 THIS DRAWING IS NOT TO BE REPRODUCED OR LOANED TO THIRD PARTIES OR USED WITHOUT WRITTEN CONSENT OF HUNTLEIGH AKRON LTD.  
 DRAWN Gary Mullenger  
 DATE 23/3/00  
 AutoCAD No. 2M3267Z  
 CHECKED  
 APPROVED


 1 FARTHING ROAD  
 IPSWICH IP1 5AP  
 ENGLAND  
 TEL: +44 1011473 749544  
 FAX: +44 1011473 463096

TITLE:  
**115v Echo Triple Magnetic Ram Kit**  
 ASSEMBLY: **2M3267Z**

ISSUE	1	2	3	4
DATE	10/97	3/98	12/98	3/00
ECN No.	-	855	893	930



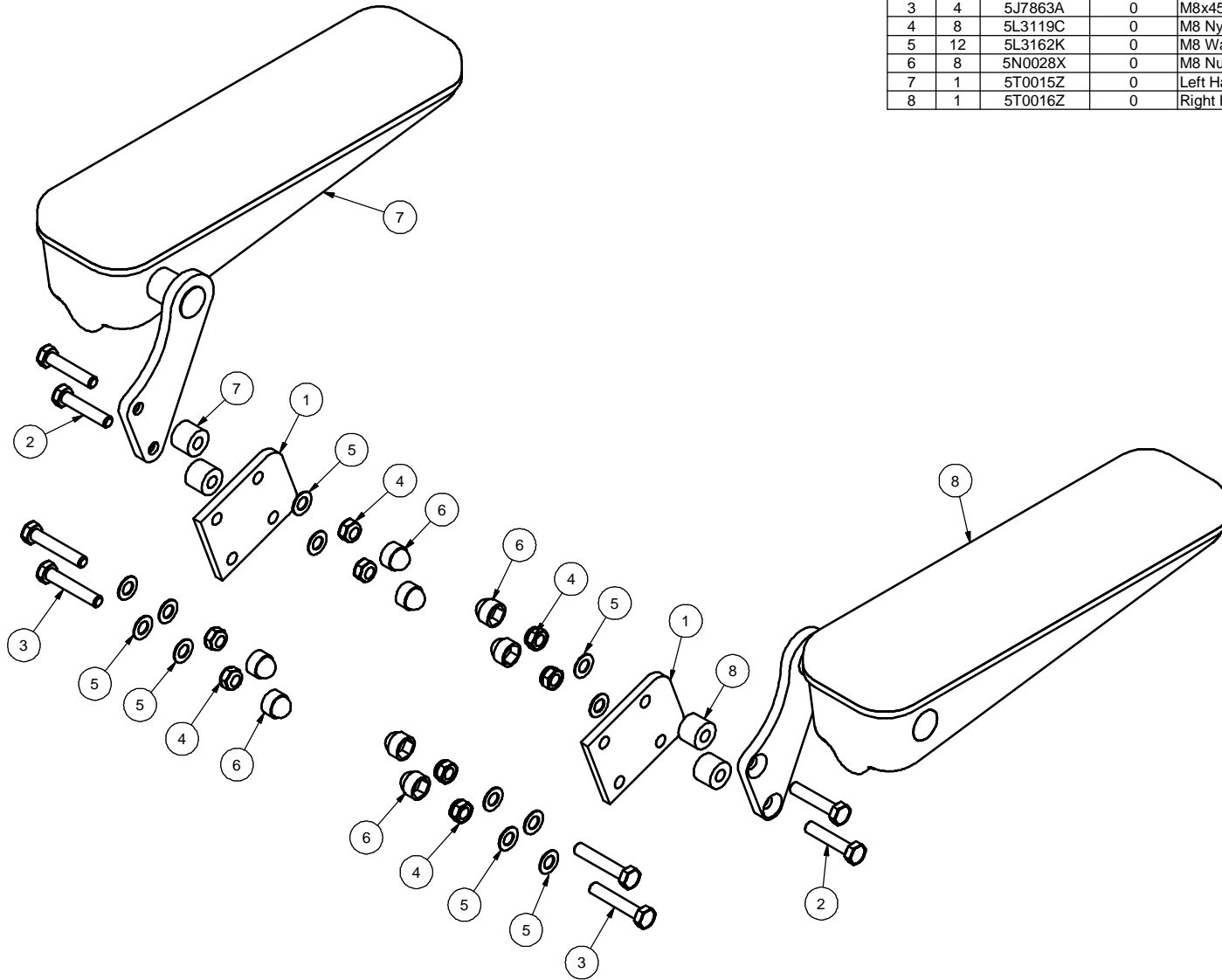


ITEM	QTY	PART No.	ISSUE No.	DESCRIPTION
1	1	3A0816Z	3	Gas Strut Operating Rod
2	1	3A2087Z	1	Gas Strut Release Flap
3	4	3A3181Z	2	Hinge Pin
4	1	3A3222Z	1	Leg Support
5	1	3A3602Z	7	Mid Frame Assembly
6	1	3A3651Z	3	Echocardiology Tilt Frame
7	1	3A3655Z	0	Echocardiology Foot Frame
8	1	3A3656Z	4	Echocardiology Backrest
9	1	3A3663Z	1	Arm Support Handle
10	1	3A3698Z	0	Echocardiology Support Arm
11	1	3A9040Z	1	Trunnion
12	2	3A9425Z	0	Collar
13	1	3G2090Z	2	335mm Pivot Pin
14	2	3G2091Z	0	161.5mm Spacer Sleeve
15	2	3G2092Z	1	22mm Spacer Sleeve
16	1	3G3211Z	2	306mm H Section Pivot Pin
17	2	3G3212Z	1	10.5mm Spacer Sleeve
18	1	3G3604Z	2	369mm Pivot Pin
19	2	3G3605Z	0	42mm Spacer Sleeve
20	1	3G3664Z	1	M10x50 Brass Studding
21	1	3G4431Z	0	M10x42 Brass Stud
22	1	5G3000Z	0	400N Locking Gas Strut
23	2	5J7660N	0	M6x30 Set Screw Hex Ht
24	1	5J8262A	0	M12x40mm Hex Bolt
25	4	5K1138U	0	M5x25 Pan Head Set Screw
26	4	5K1238U	0	M6x25 Pan Head Set Screw
27	11	5K1241U	0	M6x40 Pan Head Set Screw
28	6	5L0707L	0	3/4 Grey End Cap
29	2	5L0803Z	0	5/8 Capped Starlock
30	6	5L0906Z	0	3/4 Open Starlock
31	2	5L3319A	0	M10 Half Nut
32	1	5L3362K	0	M10 Washer Flat Form B
33	1	5L3519C	0	M12 Nyloc Nut
34	3	5L3562K	0	M12 Washer Flat Form B
35	1	5M0206A	0	1/8"x3/4" Seloc Pin
36	1	5N0058X	0	M12 White Nut Cap
37	4	5N0909E	0	1 x1 x 16G Insert
38	2	5N1082N	0	1-1/4 x M10 Knob
39	2	5N1107E	0	1 1/2"x3/4"x16G Insert
40	12	5N1409Z	0	2 x 1 x 10-14G Insert
41	2	5N1680R	0	Black Threaded Handle
42	2	5N2097R	0	Black Handle
43	8	5N2100M	0	8.5mm Grey Insert
44	1	5T1000Z	0	7/8 Handgrip Sleeve

CHECKLIST  
**DCL166**

© COPYRIGHT, HUNTLEIGH TECHNOLOGY PLC 2004 THIS DRAWING IS NOT TO BE LOANED TO THIRD PARTIES OR USED WITHOUT WRITTEN CONSENT OF HUNTLEIGH AKRON LIMITED	DRAWN	G Mullenger	 1 FARTHING ROAD IPSWICH, SUFFOLK IP1 5AP, ENGLAND TEL: +44(0)1473 461042 FAX: +44(0)1473 462924 www.huntleigh-akron.com	REVISION STATUS				
	CAD NO	2M5502Z		ISSUE	8	9	10	11
	DATE	25/03/2004		DATE	3/02	7/03	3/04	6/04
	CHECKED & APPROVED			DCN	998	1070	1101	1112
TITLE <b>Echocardiology Top Frame</b>			ASSEMBLY <b>2M5502Z</b>			ISSUE <b>11</b>		

ITEM	QTY	PART No.	ISSUE No.	DESCRIPTION
1	2	3F2096Z	2	Arm Rest Mounting Plate
2	4	5J7862A	0	M8x40 Hex Ht Bolt
3	4	5J7863A	0	M8x45 Hex Ht Bolt
4	8	5L3119C	0	M8 Nyloc Nut
5	12	5L3162K	0	M8 Washer Flat Form B
6	8	5N0028X	0	M8 Nut Cap
7	1	5T0015Z	0	Left Hand 100mm Arm Rest
8	1	5T0016Z	0	Right Hand 100mm Arm Rest



© COPYRIGHT. HUNTLEIGH TECHNOLOGY PLC 2002 THIS DRAWING IS NOT TO BE LOANED TO THIRD PARTIES OR USED WITHOUT WRITTEN CONSENT OF HUNTLEIGH AKRON LIMITED	DRAWN GMullenger	 1 FARTHING ROAD IPSWICH, SUFFOLK IPI 5AP, ENGLAND TEL: +44(0)1473 461042 FAX: +44(0)1473 462924 www.huntleigh-akron.com	REVISION STATUS			
	CAD NO A7291		DATE 28/02/02	ISSUE 1	ISSUE 2	DATE 09/96
CHECKED & APPROVED			DCN -	998		
TITLE <b>Fold Down Arm Rest Module</b>			ASSEMBLY <b>A7291</b>		ISSUE <b>2</b>	



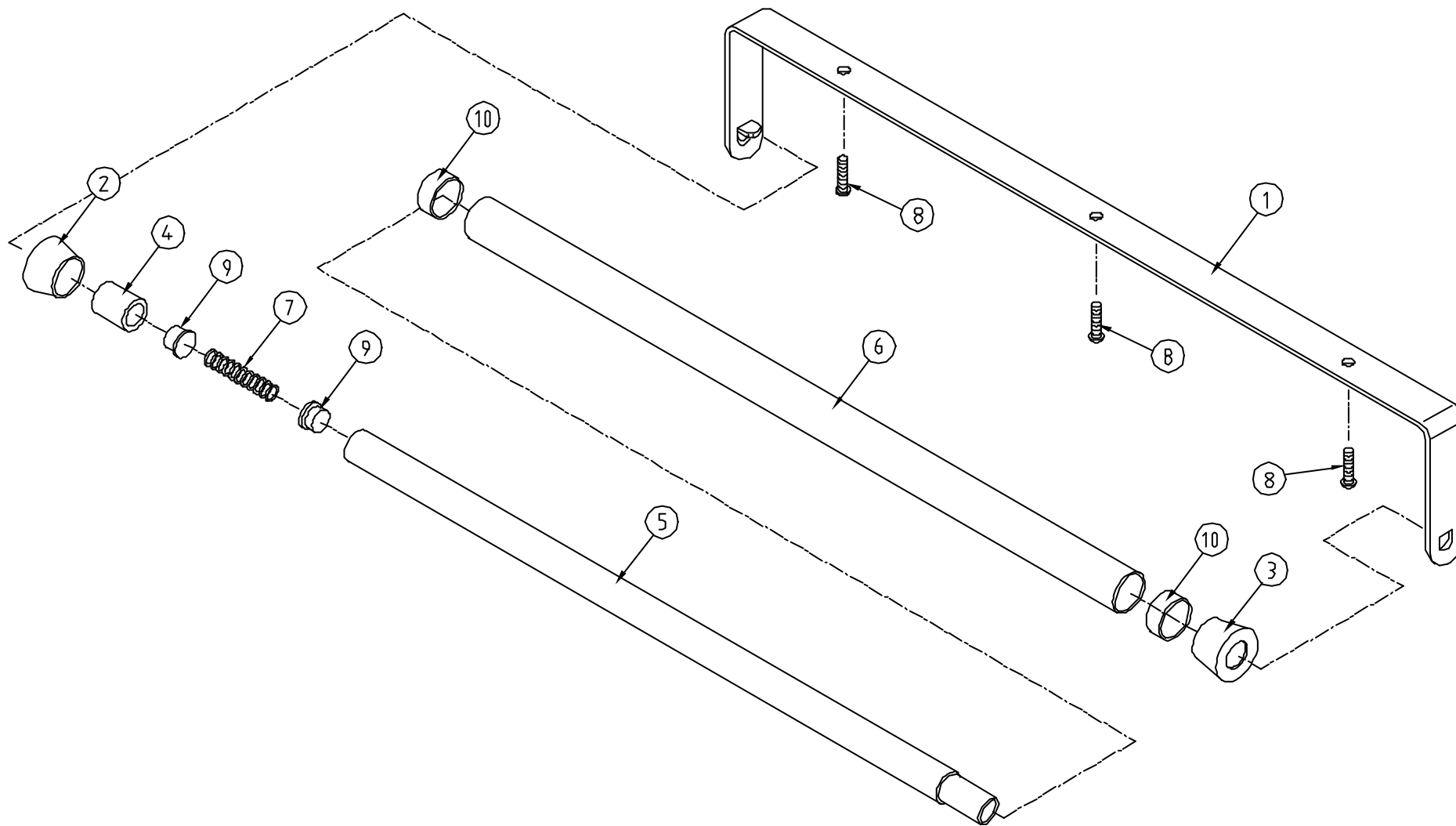
**PARTS LIST**


**PAPER ROLL HOLDER**

A7292 – Issue 02

Reference Number	Description	Quantity	Part Number	Issue Status
1	Paper Roll Holder Frame	1	3A3630Z	1
2	End Cap with 12.7mm Hole	1	3F3632Z	0
3	End Cap with 15.875mm Hole	1	3F3633Z	0
4	Spacer (15.5mm)	1	3G3620Z	0
5	Paper Roll Tube	1	3G3621Z	0
6	Paper Roll Sleeve	1	3G3634Z	0
7	Spring 40 x 8.5 x 0.8	1	5G4400Z	0
8	M6 x 25mm Pan Head Screw	3	5K1238U	0
9	End Cap <sup>3</sup> / <sub>8</sub> " I.D.	2	5N0300L	0
10	Low Shrink Temperature	0.01	5S0333Z	0

Issue	1	2	
Date	11/96	11/97	
E.C.N.	-	848	



© COPYRIGHT - HUNTLEIGH TECHNOLOGY PLC. 1996 THIS DRAWING IS NOT TO BE REPRODUCED OR LOANED TO THIRD PARTIES OR USED WITHOUT WRITTEN CONSENT OF HUNTLEIGH AKRON LTD.	DRAWN <i>Simon Rees</i>	 1 FARTHING ROAD IPSWICH IP1 5AP ENGLAND TEL: +44 1011473 749544 FAX: +44 1011473 463096					
	DATE <i>0-11-96</i>						
	AutoCAD No. <i>7292</i>						
	CHECKED APPROVED						
TITLE: <i>Sprung Paper Roll Holder &amp; Frame</i>			ISSUE	<i>1</i>	<i>2</i>		
		DATE	<i>11-96</i>	<i>10/97</i>			
		ECN No.	<i>~</i>	<i>848</i>			
		ASSEMBLY: <i>+7292</i>					