

Valu-Clean®

Technical Manual



Hood-Type Dishwasher

Models Included:
VC1000

October, 2003

Valu-Clean Manual P/N 113566 Rev. A

P.O. Box 4982
Winston-Salem, NC 27115
336/661-1559 Fax: 336/661-1979

2674 N. Service Road
Jordan Station, Ontario, Canada L0R 1S0
905/562-6630 Fax: 905/562-5422

valu-clean.com

Complete the information below so it will be available for quick reference.

Model Number _____ Serial Number _____

Voltage and Phase _____

Valu-Clean Service Agency _____ Phone _____

Valu-Clean Parts Source _____ Phone _____

Valu-Clean (Canada)

National Service Department

Phone: 1 (905) 562-4195

Phone: 1 (336) 661-1559

1 (800) 263-5798

Fax: 1 (905) 562-4618

Valu-Clean (U.S.A.)

National Service Department

Fax: 1 (336) 661-1979

We strongly recommend that you Fax your orders.

NOTE: When calling to order parts, be sure to have the model number, serial number, voltage of your machine.



Model and Serial number located on the right side of the control cabinet.

Revision History

Revision Date	Revised Pages	Serial Number Effectivity	Comments
8/01/02	—		First issue of manual and replacement parts
10/13/03	iii	—	Added new figure number
10/13/03	16-17	—	Added corner configuration instructions

Revision History (Cont)

CONTENTS

	Page
REVISION HISTORY.....	i
SAFETY SYMBOLS	v
GENERAL SPECIFICATIONS	1
INSTALLATION	2
Electrical Connections	2
Water Connections	3
Drain Connections	3
Ventilation.....	3
Chemical Connections	4
INITIAL START-UP	5
OPERATION	5
DAILY CLEANING.....	6
MAINTENANCE	7
TROUBLESHOOTING.....	8
REPLACEMENT PARTS	11
ELECTRICAL SCHEMATICS	29

LIST OF FIGURES

Figure 1 — Door Assembly	12
Figure 2 — Wash/Rinse Assembly	14
Figure 3 — Corner Conversion.....	16
Figure 4 — Drain/Pump Assembly.....	18
Figure 5 — Pump Assembly.....	20
Figure 6 — Piping Assembly	22
Figure 7 — Control Panel.....	24
Figure 8 — Control Cabinet	26

**THIS PAGE
INTENTIONALLY
LEFT BLANK**

Safety Symbols

- The following symbols appear throughout this manual alerting you to potential hazards. Statements associated with each symbol are printed in *italics*.



WARNING:

Warning statements indicate any condition or practice that could result in personal injury or possible loss of life.



CAUTION:

Caution statements indicate any condition or practice which, if not strictly observed or remedied, could result in damage to or destruction of the equipment.



NOTE:

Note statements indicate any condition or practice which, if observed, will help in the safe completion of a task.

General Safety Rules

- **The following general safety rules must be observed in addition to the specific cautions and warnings presented in this manual.**
- Operators should use caution when loading and unloading wares from the equipment.
- **Operators must NOT bypass a safety interlock or control(s) to operate the dishwasher.**
- **The service and maintenance instructions contained in this manual are intended for qualified service personnel.** These instructions assume that you are trained in basic electricity and mechanical theory. If you are not a trained technician, then do not attempt to adjust or repair the equipment as serious personal injury or damage to the equipment may result.

**THIS PAGE
INTENTIONALLY
LEFT BLANK**

GENERAL SPECIFICATIONS

About this manual

All information, illustrations and specifications contained in this manual are based upon the latest product information available at the time of publication. Valu-Clean constantly improves its products and reserves the right to make changes at any time or to change specifications or design without notice and without incurring any obligation.

Organization of Manual

This manual is divided into seven parts:

- General Specifications
- Installation
- Daily Operation
- Cleaning and Maintenance
- Troubleshooting
- Replacement Parts, contains parts diagrams and parts list.
- Electrical Schematics

NOTE:

Unless noted otherwise, dimensions, capacities, temperatures, etc., given in this manual are U.S. Customary Measures and the Metric Equivalent of the U.S. customary measures.

Model

The VC1000 model is a low temperature (140°F/60°C) sanitizing model for use with a hypochlorite (Chlorine) based sanitizer at a minimum concentration of 50PPM or to your local codes, in the final rinse. The dishwasher includes three chemical dispenser pumps located in the control cabinet on the top of the machine.

Standard Equipment

- Automatic Operation
- Common utility connections
- Balanced door lift system
- Interchangeable upper and lower spray arms
- Door safety switch
- Field convertible to corner model
- De-lime switch in control cabinet
- 1-hp drip-proof pump motor

INSTALLATION

Unpack the dishwasher



CAUTION:

Care should be taken when lifting the machine to prevent damage.



NOTE:

The installation of your machine must meet all applicable health and safety codes.

1. Immediately after unpacking the machine, inspect for any shipping damage. If damage is found, save the packing material and contact the carrier immediately.
2. Remove the dishwasher from the skid. Move the machine to its permanent location.
3. Machine must be placed on a sound self-draining floor.
4. Level the machine (if required) by placing a level on the top of the machine and adjusting the feet. Level the machine from front-back and side to side.



Electrical Connections



WARNING:

Electrical grounding connections must comply with all applicable Electrical Codes.



WARNING:

When working on the dishwasher, disconnect the electric service and place a tag at the disconnect switch to indicate work is being done on that circuit.

1. A qualified electrician must compare the electrical power supply with the machine electrical specifications before connecting to the incoming service through a fused disconnect switch.
2. The electrical supply is single phase. The machine must be installed on 15A single phase breaker.
3. A knock out is provided at the left rear corner of the control cabinet (as viewed from the front) for electrical service connection or connection will be made from the plug (depending on how the machine was ordered). A fused disconnect switch or circuit breaker (supplied by others) is required to protect the power supply circuit.
4. Single phase incoming wire connections are made at the machine's main terminal block. The main terminal block is located in the control cabinet on the back wall and to the left side of cabinet.

INSTALLATION (CONT.)

Plumbing Connections



NOTE:

Plumbing connections must comply with all applicable sanitary and plumbing codes.

Water Connections

1. VC1000 dishwashers require a single, hot water supply.
2. The hot water connection to the dishwasher is at the 1/2" NPT Female "Y" strainer.
3. The connection is made from the top rear of the dishwasher.
4. The recommended minimum water temperature is 140°F/60°C.
5. A manual shut-off valve for water (supplied by others) should be installed in the supply line to allow for servicing of the machine. The shut-off valve should be the same size or larger than the supply line.
6. **Install a pressure reducing valve (PRV) in the water supply line if flow pressure exceeds 20-22 PSI/138-151.8kPa.**

Drain Connections

1. The dishwasher is a gravity drain machine equipped with 1-1/2" O.D. hose connection point.
2. The maximum drain flow rate is 15 gallons/min-56.8 liters/min.
3. Drain height for the dishwasher must not exceed 11" (280mm) above the floor level.
4. The drain connection is made to the dishwasher by connecting to the tail piece located on the bottom of the drain pan.

Ventilation



NOTE:

Ventilation must comply with local sanitary and plumbing codes.



CAUTION:

*Exhaust air **should not** be vented into a wall, ceiling, or concealed space of a building. Condensation can cause damage.*

INSTALLATION (CONT.)

Chemical Pumps



NOTE:

Consult a qualified chemical supplier for your chemical needs.

1. Prime switches are located on the right hand side of the control cabinet.

Peristaltic Pump

To prime the peristaltic pump:

1. Insert pump inlet hose into the detergent container.
2. Close machine door and turn power switch to “ON” position.
3. Allow wash tank to fill up then press detergent pump prime switch to prime inlet and outlet hose.
4. Stop priming when detergent reaches machine.

INITIAL START-UP

Complete the installation

After the plumbing and electrical connections are made, follow the steps below to complete the installation of your dishwasher.

1. Remove the protective covering from the exterior of the machine.
2. Remove any foreign material from the inside of the machine.
3. Make sure dishwasher power is off.
4. Turn the main water supply on.
5. Turn main power on at the main power service disconnect switch.
6. Install the pump suction filter.
7. Make sure that the overflow seats securely in the tank bottom.
8. Make sure doors are fully closed.
9. Turn power switch to the "ON" position.
10. Press and hold the fill switch until water overflows into the lower drain screen.

OPERATION

Operation and Use

1. Before washing make sure that:
 - wall mounted on/off switch is switched on;
 - water supply is open and water pressure is present;
 - pump suction filter is installed in proper location;
 - overflow tube is inserted in drain;
 - rotating spray arms move freely;
 - rinse, detergent and sanitizer containers are full;
2. Scrap and preflush all items to be washed. Load items into the rack.
Do not overload the rack. Wash only one layer of silverware in a rack.
3. Open the door and insert the rack into machine. Close door.
4. Machine starts automatically. **CYCLE** light glows green.
5. Remove rack when the **CYCLE** light goes out.

DAILY CLEANING

Cleaning your machine is the best maintenance that you can provide. Components that are not regularly flushed and cleaned do not perform well. The following schedules are the minimum requirements necessary for the proper performance of your machine. Intervals should be shortened whenever your machine is faced with abnormal conditions, hard water or multiple shifts. Before carrying out the cleaning operations, turn off the main disconnect switch for the equipment.

Cleaning Schedule

Every 2 Hours or After Each Meal Period

1. Press the drain switch and hold to drain wash tank. When all the water has drained, release the switch.
2. Turn dishwasher and wall switch OFF.
3. Flush the interior with fresh water.
4. Remove scrap wash pump inlet screen. Rinse thoroughly to make sure that it is clean. Do not bang or beat it on the side of sink or other hard objects as this will eventually cause it to break or bend thus causing it to not fit or work properly.
5. Reinstall the pump scrap screen.
6. Clean spray arm nozzles as needed.
7. Remove scrap screen from bottom of the drain pan. Rinse thoroughly to remove all debris.
8. Replace scrap screen at the bottom of the drain pan.

Frequently check and clean the nozzles. Blocked nozzles will prevent the machine from cleaning properly. To clean the wash/rinse arms:

1. Undo the thumbscrew which hold the arms in place.
2. Turn and remove the end caps.
3. Flush arms with water, use a toothpick or paperclip (if necessary) to clear the nozzles.
4. Do not beat the arms on anything to clean nozzles.
5. Replace end caps.
6. Replace arms back into machine.

Every 8 Hours or at the End of the Day

1. Drain the machine and turn the power switch off..
2. Flush interior with fresh water.
3. Clean drain scrap screen and pump intake screen, as described above.
4. Clean spray arms and nozzles.
5. Thoroughly clean the exterior of the machine.
DO NOT HOSE DOWN WITH WATER.
6. Reassemble the machine.
7. Leave doors open to aid in drying the interior of machine.



CAUTION:

Do not leave water in wash tank overnight.

MAINTENANCE

Before carrying out any maintenance operations, turn off the main disconnect switch for the equipment.

Do not use corrosive products such as sodium hypochlorite (bleach), acids, steel wool or steel brushes to clean the inside and the outside of machine.

The presence of calcium and magnesium salt in water can compromise machine performance. Ask a qualified chemical person to remove the deposits periodically.

Stainless steel surfaces should be cleaned well in order to avoid some oxidation risks, or chemical reactions.

Deliming

Your dishwasher should be delimed regularly depending on the mineral content of your water. Inspect the machine interior for mineral deposits and use a deliming solution for the best cleaning results.



NOTE:

Consult your chemical supplier for an appropriate deliming solution.



WARNING:

Deliming solutions or other acids must not come in contact with household bleach (sodium hypochlorite) or any chemicals containing chlorine, iodine, bromine, or fluorine. Mixing will cause hazardous gases to form.

Skin contact with deliming solutions can cause severe irritation and possible chemical burns. Consult your chemical supplier for specific safety precautions.

Deliming Process

1. Remove all dishes from machine.
2. Remove chemical pick-up tubes from their containers.
3. Place each tube in a container of fresh water and prime the chemical lines for several minutes to thoroughly flush chemical from the lines. Leave the pick-up tubes out of their containers.
4. Drain machine by holding the drain toggle switch until empty. Fill machine with water only by the fill toggle switch. Run 1 cycle to rinse the inside of the machine then drain by holding the drain toggle switch. Refill the machine by holding the fill toggle switch.
5. Spray interior walls with deliming solution and let sit for 5 to 10 minutes depending on the amount of build-up. Add deliming solution to wash tank. Do not let chemicals sit for longer than 15 minutes.
6. Close door, run on the automatic cycle.
7. Repeat steps 3-5 if necessary.
8. Repeat Step 4.
9. Refill the machine and run an additional cycle at least two more times. Drain and refill the machine after each cycle to thoroughly flush any deliming solution from the interior of the machine.
10. Flip the power switch to OFF. Leave doors open to aid in drying overnight. Deliming process is now complete.

TROUBLESHOOTING

In order to find the cause of a breakdown or abnormal operating condition in your dishwasher please ensure that:

1. All switches are ON
2. Drain overflow tube is in place and seated
3. Wash pipe and rinse nozzles are clean
4. Spray arms are in their proper positions
5. Pump inlet screen is properly positioned
6. Detergent, sanitizer and rinse additive dispensers are adequately filled
8. Doors are fully closed.

If a problem still exists, use the following table for troubleshooting

CONDITION	CAUSE	SOLUTION
Cycle will not start	Door not closed.....	Make sure doors are fully closed
	Door safety switch faulty	Contact your service agency
	Main switch off.....	Check disconnect
Low or no water	Main water supply is turned off	Turn on house water supply
	Drain/overflow tube is not in place and seated	Clean, replace and seat drain tube as needed.
	Faulty fill valve.....	Contact your chemical supplier.
Continuous water filling	Fill valve will not close	Clean or replace
Any motor not running	Defective contactor	Contact your chemical supplier
	Defective motor	Contact your chemical supplier
Wash tank water temperature is low when in use	Incoming water temperature at machine too low	Raise temperature to 140°F/60°C
	Defective thermometer	Check or replace
	Defective solenoid valve.....	Check or replace
Arms not rotating	Rinse nozzles not clean.....	Clean
	Bearings worn	Replace
	Water supply pressure low	Check incoming water pressure
Insufficient pumped spray pressure	Clogged pump intake screen.....	Clean
	Clogged spray pipe	Clean
	Low water level in tank	Check drain and overflow tube, timer may need adjustment, contact chemical supplier
	Defective pump seal	Contact service agent
Insufficient rinse or no rinse	Faulty pressure reducing valve	Clean or replace
	Improper setting on pressure reducing valve.....	Set flow pressure to 20-22 psi [138-151 kPa]
	Clogged rinse nozzle and/or pipe	Clean with paper clip/delime
	Improper water line size	Have installer change to proper size 1/2" NPT

TROUBLESHOOTING (CONT)

CONDITION	CAUSE	SOLUTION
Low final rinse temperature	Low incoming water	Check valve to be sure it is clean and operating.
	Defective thermometer	Check for proper setting or replace
Machine leaking	Leaking at chemical hose	Replace hoses
	Pump seal leaking	Replace seal
	Leaking at pump hose.....	Contact your chemical supplier
	Leaking at doors	Check to make sure that doors are fully closed
Water splashing out door	Nozzles/End caps missing	Replace caps
	Wash nozzles blocked	Clean
	Arms not rotating	Replace bearings
	Door handle twisted (pass through) ..	Adjust or replace handle
Poor washing results	Detergent dispenser not operating properly.....	Contact detergent supplier
	Insufficient detergents.....	Contact detergent supplier
	Food Soil concentration too high in wash tank	Prescrap dishes thoroughly
	Wash water temperature too low	See condition "Wash Tank Water Temperature" above
	Wash arm clogged.....	Clean
	Improperly scraped dishes	Check scraping procedures
	Ware improperly placed in rack	Use proper racks. Do not overload racks
	Improperly cleaned equipment	Unclog wash sprays and rinse nozzles to maintain proper pressure and flow conditions. Overflows must be open. Keep wash water as clean as possible.

**THIS PAGE
INTENTIONALLY
LEFT BLANK**

REPLACEMENT PARTS

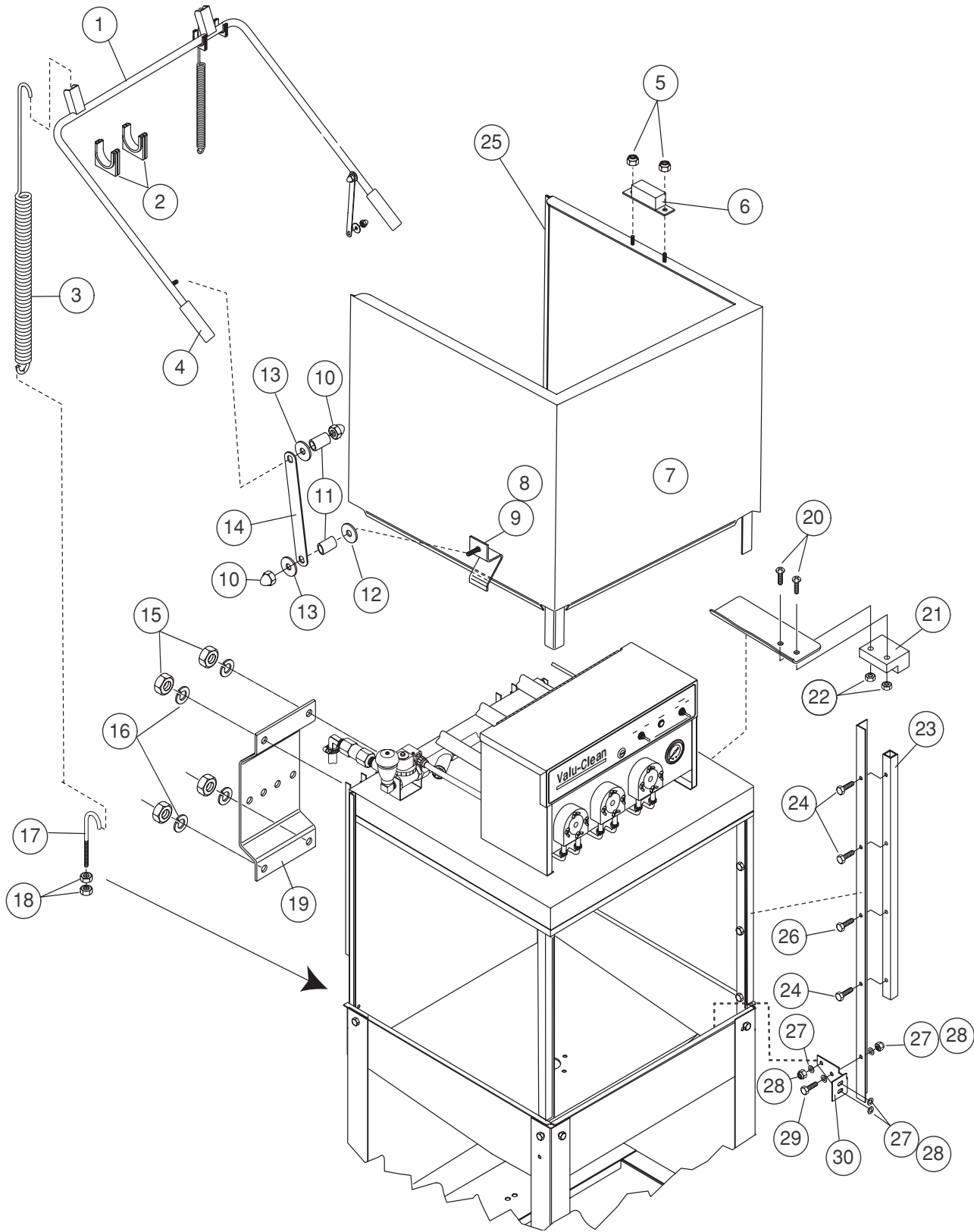


Figure 1-
Door Assembly

DOOR ASSEMBLY

Fig. 1 Item No.	Part No.	Part Description	Qty
1	0510458	DOOR HANDLE, VC1000	1
2	0510456	DOOR HANDLE BUSHING	4
3	0510459	SPRING, DOOR VC1000	1
4	0510460	GRIP, DOOR HANDLE	2
5	107965	NUT, GRIP 8-32 W/NYLON INSERT	2
6	111439	MAGNET, PERMANENT	1
7	W333052	DOOR, VC1000 WELD ASSY	1
8	0710488	DOOR STOP WELDMENT	2
9	107893	SHOCK ABSORBER (NOT SHOWN)	2
10	0509274	NUT, ACORN 5/16-18 SST	4
11	0510456	BUSHING, DOOR HANDLE.....	4
12	0310490	WASHER, 0.313 X 1.00 16 GAUGE SST	2
13	102376	WASHER, FLAT 5/16 X 3/4 X 1/16.....	4
14	W1554	LINKAGE, DOOR HANDLE.....	2
15	0501539	NUT, HEX 1/4-20 SST	4
16	0501501	LOCK WASHER 1/4"	4
17	0510492	J BOLT, 5/16-18 UNC X 5"	2
18	100154	NUT, PLAIN 5/16-18	4
19	W333257	SUPPORT, REAR HOSE/CABLE	1
20	104883	SCREW, 6-32 X 3/8 ROUND HEAD.....	2
21	111090	HAMLIN REED SWITCH	1
22	108954	NUT, GRIP 6-32 W/NYLON INSERT	2
23	W1539	WEARSTRIP, DOOR VC1000	2
24	0509439	SCREW, 10-32 X 1/4 HEX HEAD.....	8
25	0510457	CLIP ON WEARSTRIP	2
26	0508665	SCREW, 10-32 X 5/8 HEX WASHER HEAD	2
27	0501478	WASHER 17/64 ID X 9/16 OD 18GA	8
28	107967	NUT, GRIP 1/4-20 W/NYLON INSERT	2
29	0501419	BOLT, 1/4-20 X 1/2 HEX HEAD	4
30	W1542	BRACKET, PILLAR RH SUPPORT	1
	W15425	BRACKET, PILLAR LH SUPPORT	1
31	W1560	REMOVABLE TRACK GUIDE CORNER CONVERSION(NOT SHOWN)	A/R
32	W1557	TRACK WELDED ASSEMBLY (NOT SHOWN).....	A/R

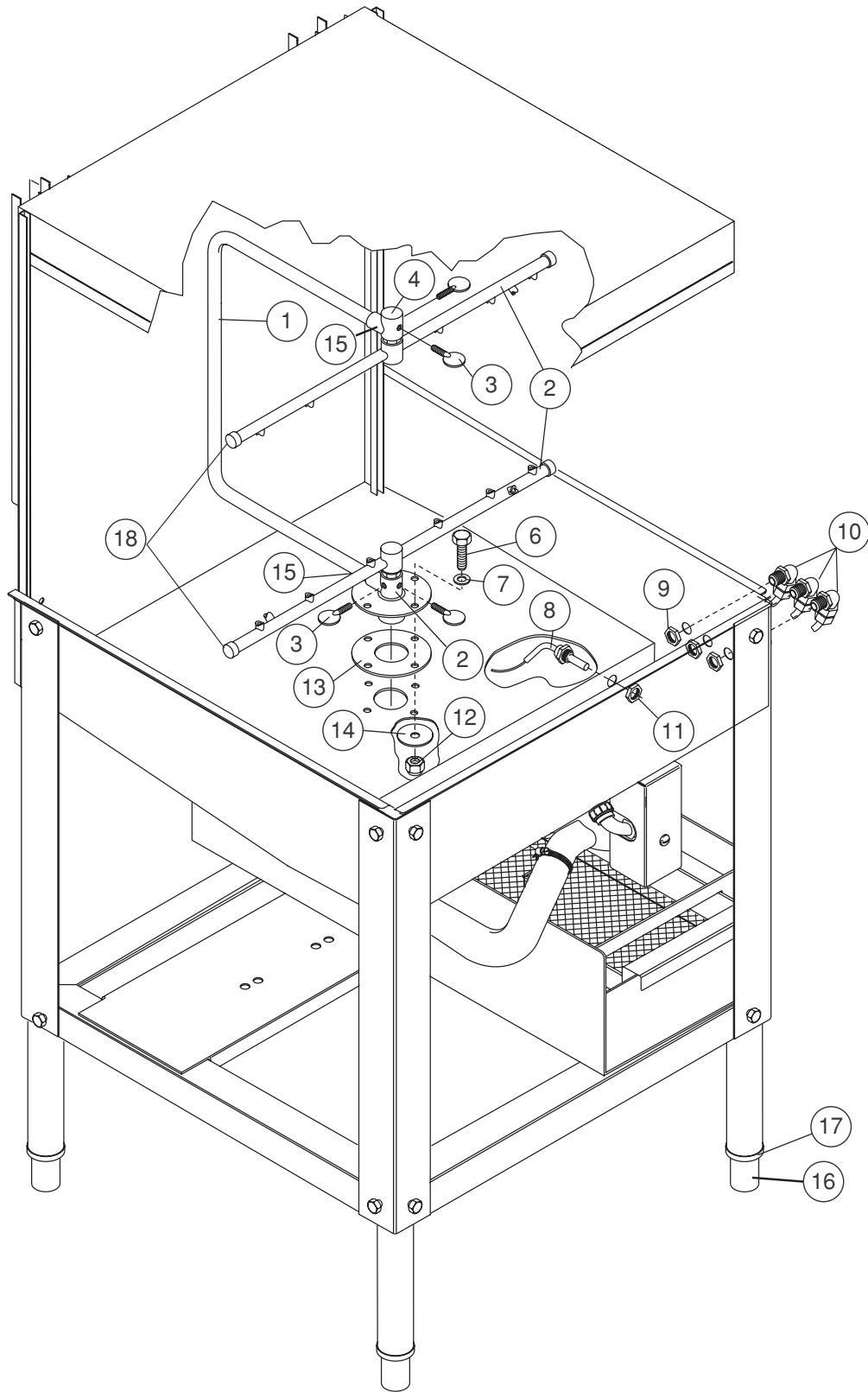


Figure 2-
wash/rinse assembly

WASH/RINSE ASSMEBLY

Fig. 2 Item No.	Part No.	Part Description	Qty
1	W333242	WASH TUBE, 25MM SS VC1000	1
2	0510420	SPRAYARM COMPLETE	2
3	0510495	SCREW, THUMB 5/16-18	4
4	0510484	UPPER WASHARM HUB	1
5	0510483	LOWER WASHARM HUB	1
6	100735	BOLT 1/4-20 X 5/8 HEX HEAD	4
7	0501478	WASHER 17/64 ID X 9/16 OD 18GA	4
8	107440	THERMOMETER 8' FLANGE	1
9	0510512	POLY NUT, 1/4 NPT	3
10	0509989	ELBOW 1/4 TUBE X W1/4 MPT COMP POLY	3
11	201029	LOCKNUT 1/2" NP	1
12	107967	NUT, GRIP 1/4-20 W/NYLON INSERT	4
13	0510489	GASKET, LOWER HUB	1
14	0300823	WASHER 9/32ID X 1"OD	4
15	0501395	SCREW SOCKET 1/4-20 X 5/16	2
16	113098	FOOT INSERT	4
17	B501381	RING, POSI GRIP LOCKING	4
18	0510534	WASH ARM END CAP	4
19	0510536	WASH ARM BEARING REBUILD KIT (NOT SHOWN)	A/R
20	0510535	BEARING ASSEMBLY WASH ARM (NOT SHOWN)	A/R

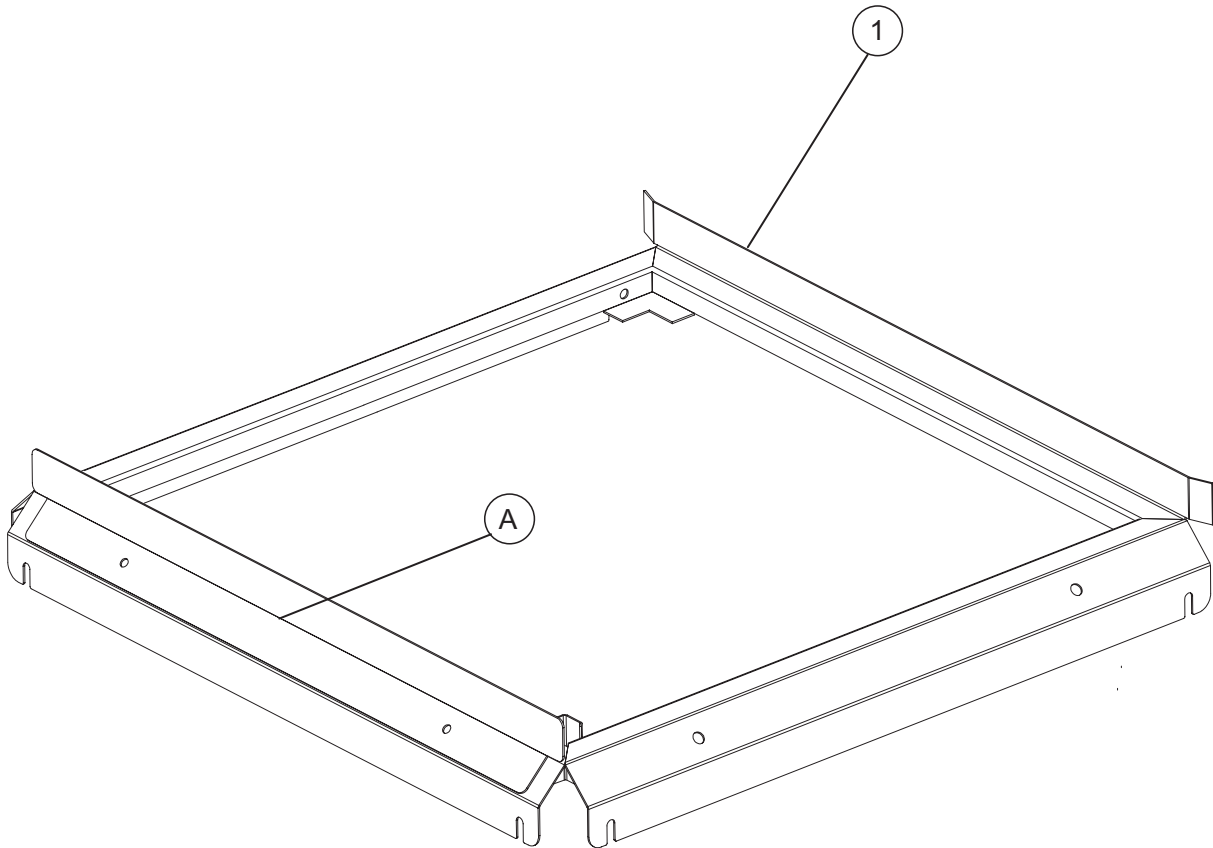


Figure 3 -
Corner Track Conversion

CORNER TRACKS CONVERSION

Fig. 2 Item No.	Part No.	Part Description	Qty
1	W1557	Rack Slide VC1000, Assy	1

CORNER CONVERSION INSTRUCTIONS

Remove existing screws from front rack slide guide (a) and move to either side. Install with existing screws. Corner conversion is now complete.

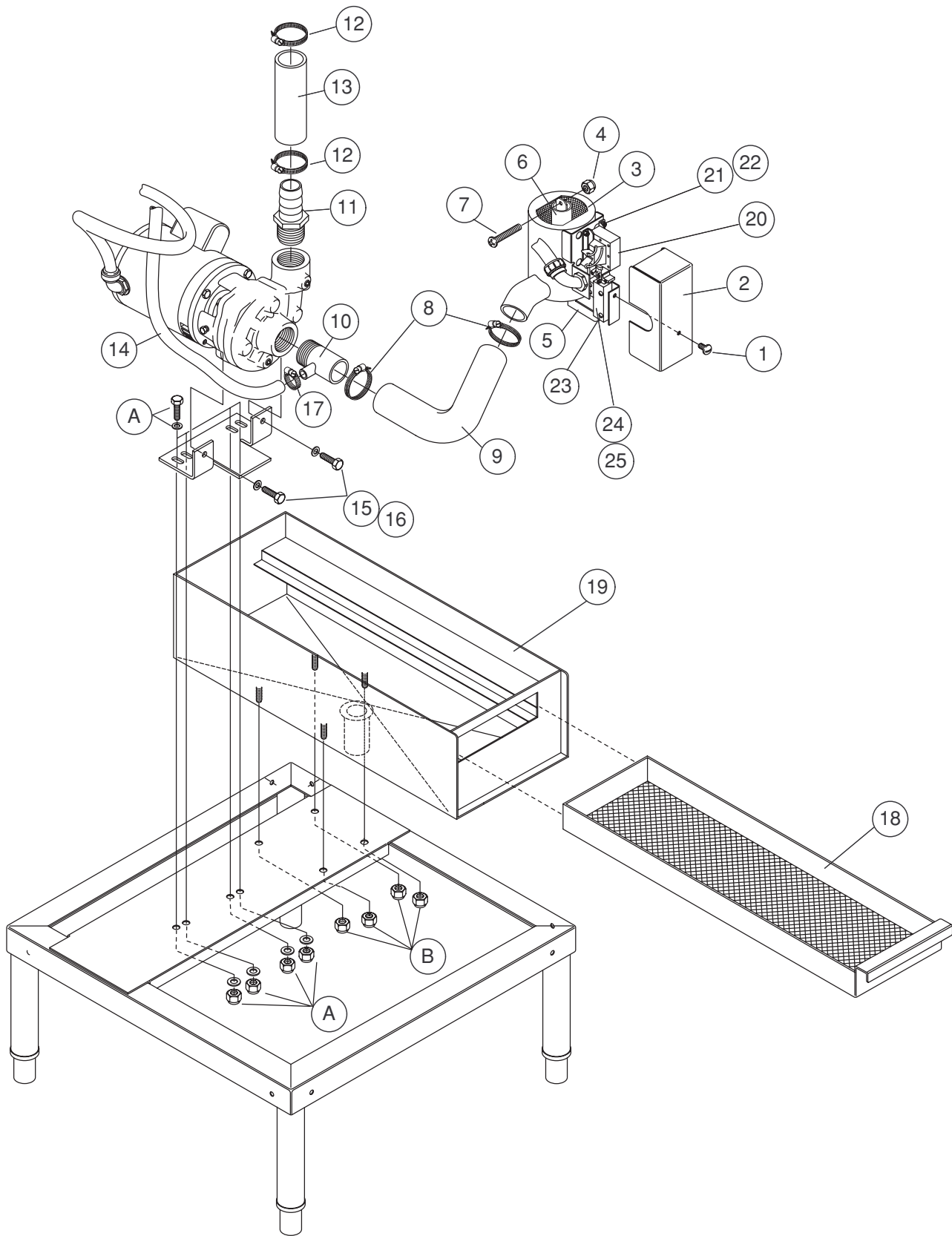


Figure 4-
Drain/Pump Assembly

DRAIN/PUMP ASSMEBLY

Fig. 4 Item No.	Part No.	Part Description	Qty
1	0501412	SCREW, 10-32 X 3/8 TRUSS HEAD.....	1
2	0310479	COVER, SOLENOID	1
3	0510417	SCREEN, PUMP INLET	1
4	107965	NUT, GRIP 8-32 W/NYLON INSERT	1
5	0310491	DRAIN STOPPER LIFT BRACKET	1
6	0710496	ASSY, DRAIN BALL/OVERFLOW	1
--	0510497	DRAIN BALL OVERFLOW TUBE.....	A/R
7	0508667	SCREW, RH 8-32 X 7/8 SS	1
8	104165	CLAMP, HOSE M40.....	2
9			
10	0710474	PUMP INLET HOSE NIPPLE	1
11	0510421	PUMP DISCHARGE FITTING	1
12	0502571	HOSE CLAMP DISCHARGE	2
13	0509235	HOSE, 1.25 ID X 1.625 OD BRAIDED PVC.....	6ft
14	0502665	TUBING, 1/2" X 3/4" INNER BRAID.....	5ft
15	100739	BOLT 5/16-18 X 3/4 HEX HEAD	4
16	100826	WASHER, FLAT 5/16ID.....	8
17	0503679	CLAMP, SS GEAR TYPE 7/16	1
18	W333009	FILTER BASKET/DRAIN SCREEN	1
19	W333002	DRAIN PAN WELD	1
20	0510400	SOLENOID 120V 60HZ.....	1
21	0510493	BOLT, CARRIAGE 10-24 X 1/2 (FOR DRAIN SOLENOID)	4
22	0510494	LOCKNUT, 10-24 W/NYLON INSERT	4
23	0501423	SCREW, RH 10-32 X 1-1/4	4
24	0310477	SOLENOID LIFT STOP (GUIDE SOLENOID, SMALL)	1
25	0310478	GUIDE, SOLENOID LIFT (LONG)	1
26	0501406	SCREW, SLOT RH 8-32 X 1/2(NOT SHOWN)	1
27	107965	NUT, GRIP 8-32 W/NYLON INSERT	4
A	100739	BOLT 5/16-18 X 3/4 HEX HEAD	4
	100826	WASHER, FLAT 5/16ID.....	8
	109009	NUT, GRIP 5/16 W/NYLON INSERT	4
B	107967	NUT, GRIP 1/4-20 W/NYLON INSERT	4
9	109578	HOSE, DISCHARGE	1
10	0510421	PUMP DICHARGE FITTING	1
11	108528	HOSE BARB 1/2 X 1/2	
12			
13	0509235	HOSE, 1.25ID X .620 OD BRAIDED	A/R
14			
15			
16			
17			
18			
19	W333009	FILTER BASKET/DRAIN SCREEN	1

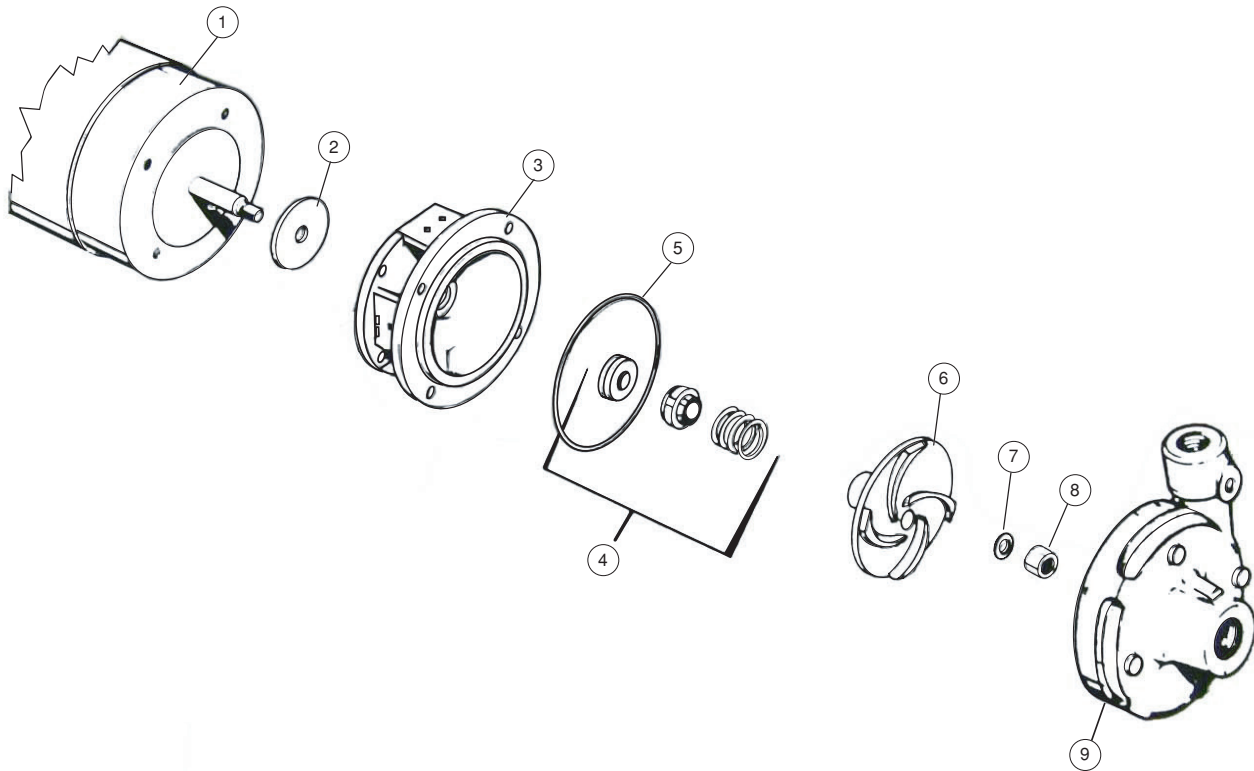


Figure 5-
Pump Assembly

PUMP ASSMEBLY

Fig. 5 Item No.	Part No.	Part Description	Qty
1	0510525	PUMP, MOTOR VC1000	1
2	0510526	FLINGER, WASHER	1
3	0510527	ADAPTER IRON	1
4	0510529	SEAL 5/8 BN-CM.....	1
5	0510528	CASE GASKET	1
6	0510530	IMPELLER BRONZE 3-7/8	1
7	0510531	WASHER "P" IMPELLER	1
8	0510532	IMPELLER NUT	1
9	0501533	VOLUTE	1

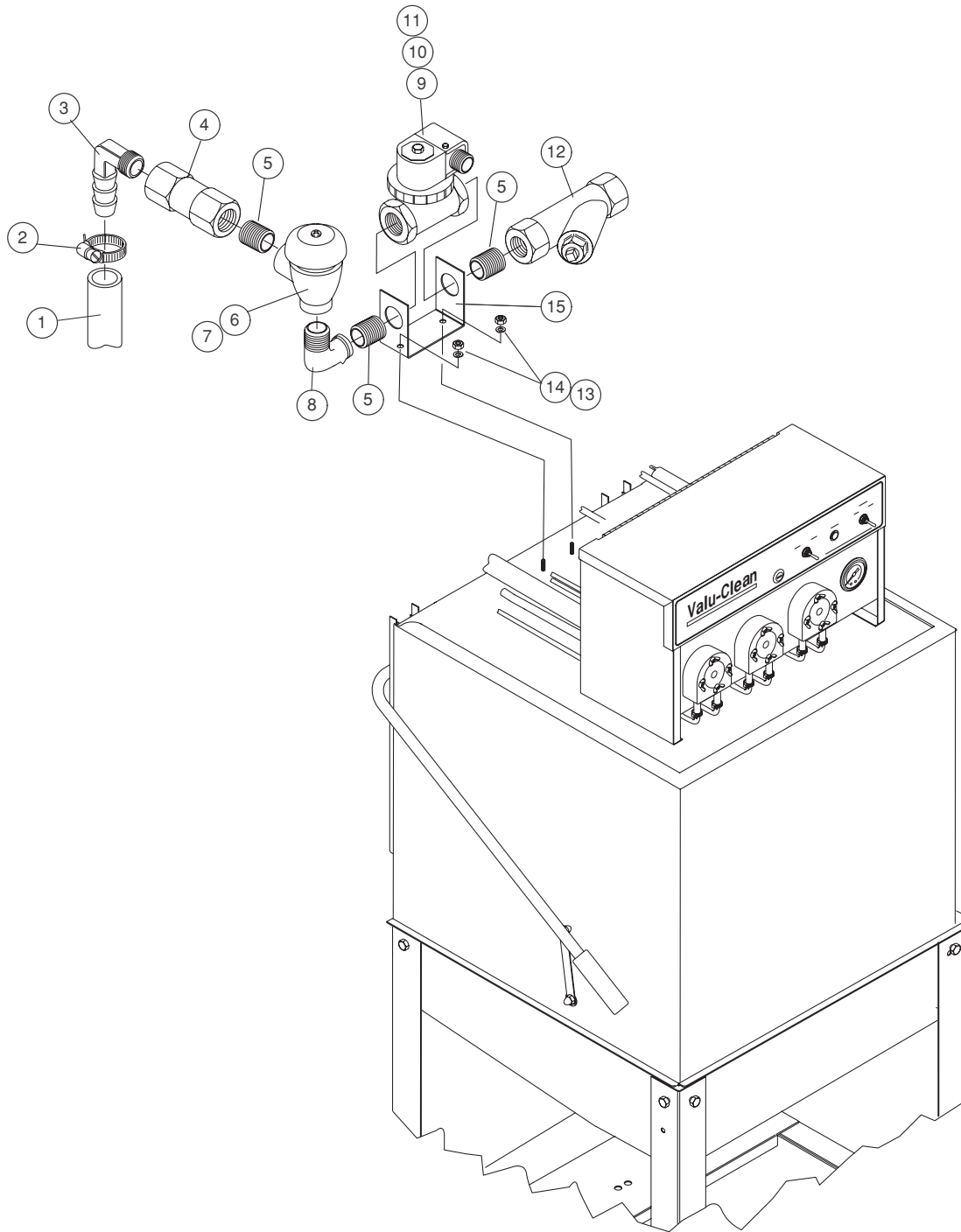


Figure 6-
Piping Assembly

PIPING ASSEMBLY

Fig. 6 Item No.	Part No.	Part Description	Qty
1	0502665	TUBING 1/2 X 3/4 INNER BRAID.....	A/R
2	0503679	CLAMP, GEAR SST TYPE 7/16.....	1
3	108528	HOSE BARB 1/2 X 1/2 90°	1
4	0510416	CHECK VALVE 1/2"	1
5	100209	NIPPLE, 1/2" CLOSE BRASS	3
6	113220	VACUUM BREAKER BRASS 1/2".....	1
7	113221	REPAIR KIT 1/2" VACUUM BREAKER	1
8	0509938	ELBOW, 1/2" FORGED 90°	1
9	109886	VALVE, 1/2"	1
10	108516	COIL, VALVE	1
11	109902	REPAIR KIT, VALVE 1/2"	1
12	104421	LINE STRAINER 1/2"	1
13	0501539	NUT, PLAIN 1/4-20	2
14	0501501	LOCKWASHER 1/4	2
15	0310422	BRACKET, PLUMBING VC1000	1

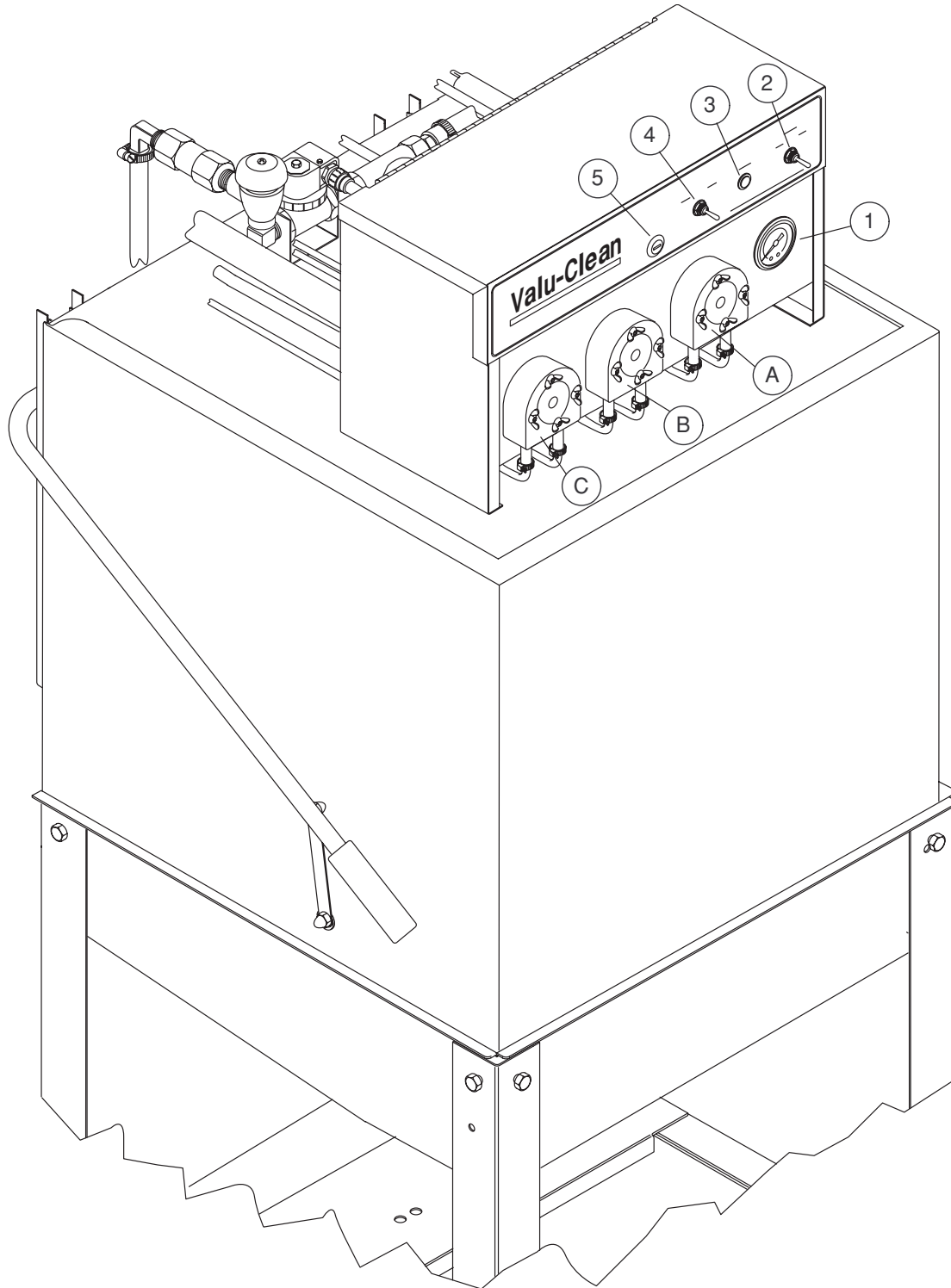


Figure 7-
Control Panel

CONTROL PANEL

Fig. 7 Item No.	Part No.	Part Description	Qty
1	107440	THERMOMETER, FLANGE 8FT	1
2	0501398	TOGGLE SWITCH ON-OFF	1
3	0508551	LAMP , GREEN NEON 125VAC.....	1
4	0510399	TOGGLE SWITCH MOMENTARY VC1000	1
5	B500394R	LOCK, CABINET REWORKED	1

CHEMICAL PUMPS

A	RINSE AID PUMP		
	109829	PUMP, PERISTALLIC	1
	108194	TUBE 3/16ID X 3/8OD (INCLUDED IN 109829, NOT SHOWN)	1
	0501518	TIE, NYLON.....	2
	0502666	TUBING, 1/8ID X 1/4OD PVC BEVERAGE	A/R
	0306363	TUBE, STIFFNER 3/8 ID X 11-7/8 LONG (NOT SHOWN)	1
	0501869	STRAINER (CHEMICAL BOTTLE)(NOT SHOWN)	1
	0505483	LABEL RINSE AID	1
B	SANTIZING PUMP		
	109829	PUMP, PERISTALLIC	1
	108194	TUBE 3/16ID X 3/8OD (INCLUDED IN 109829, NOT SHOWN)	1
	0501518	TIE, NYLON.....	2
	0502666	TUBING, 1/8ID X 1/4OD PVC BEVERAGE	A/R
	0306363	TUBE, STIFFNER 3/8 ID X 11-7/8 LONG (NOT SHOWN)	1
	0501869	STRAINER (CHEMICAL BOTTLE)(NOT SHOWN)	1
	0503694	LABEL SANITIZER.....	1
C	DETERGENT PUMP		
	109829	PUMP, PERISTALLIC	1
	108194	TUBE 3/16ID X 3/8OD (INCLUDED IN 109829, NOT SHOWN)	1
	0501518	TIE, NYLON.....	2
	0502666	TUBING, 1/8ID X 1/4OD PVC BEVERAGE	A/R
	0306363	TUBE, STIFFNER 3/8 ID X 11-7/8 LONG (NOT SHOWN)	1
	0501869	STRAINER (CHEMICAL BOTTLE)(NOT SHOWN)	1
	0503695	LABEL DETERGENT	1

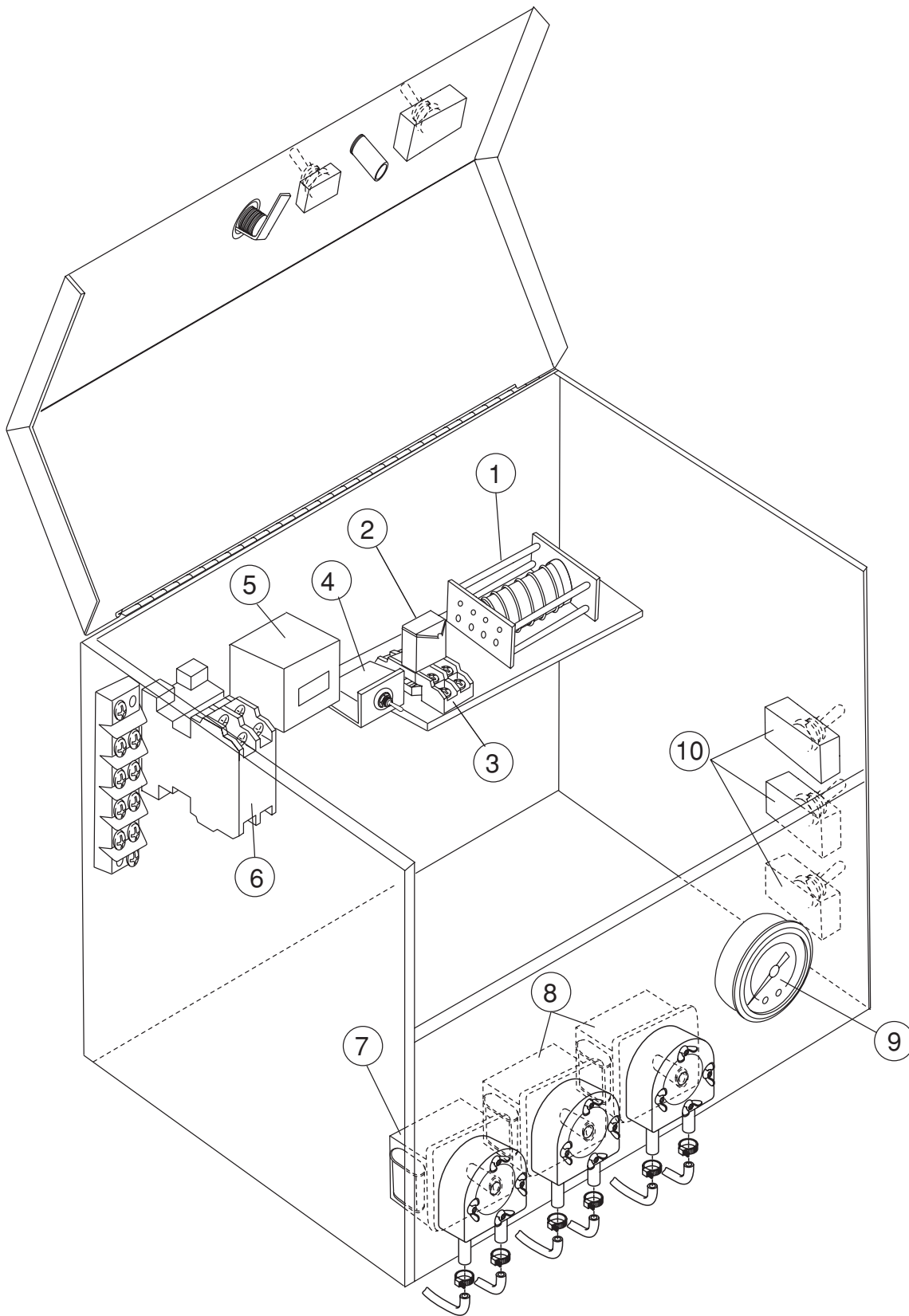


Figure 8-
Control Cabinet

CONTROL CABINET

Fig. 8 Item No.	Part No.	Part Description	Qty
1	0510397	TIMER ASSEMBLY	1
2	111068	RELAY 120VAC 2PDT	1
3	111036	SOCKET, RELAY	1
4	0501373	TOGGLE SWITCH	1
5	0509296	COUNTER, 120VAC NON-RESET	1
6	107369	CONTACTOR, 2POLE 120V	1
7	0503757	MOTOR, PUMP DRIVE	1
8	108299	MOTOR REDUCER 35RPM	2
9	107440	THERMOMETER, FLANGE 8FT	1
10	0510399	TOGGLE SWITCCH	3

**THIS PAGE
INTENTIONALLY
LEFT BLANK**

ELECTRICAL SCHEMATICS