

Bench Scale Bases

★ ★ ★ *American* ★ ★ ★

SCALE & EQUIPMENT CO., Inc.

SELECTED SCHEMATICS AND PARTS LISTS

Many parts available online. Please call
800-225-2623 for prompt service on other parts.

Installation/Service Manual

IMPORTANT

*This equipment must be routinely checked
for proper operation and calibration.
Application and usage will determine the frequency
of calibration required for safe operation.*

Table of Contents

Introduction	5
Diamond Base Bench Scales	6
Diamond Base Specs	6
Signal Cable Connections	6
Scale Setup.....	7
Overload Stop Adjustment	7
Cleaning Instructions	8
Torque Specification	8
Drawings and Parts List	10-11
Torsion Bases.....	13
Torsion Base Specs	13
Leveling the Scale	13
Signal Cable Connections	13
Overload Stop Adjustments	13
Torque Specs	13
Drawings and Parts List	14-15
3600 Series QDT Bases	16
3600 Base Specs	16
Leveling the Scale	16
Signal Cable Connections	16
Replacing the Loadcell.....	16
Overload Stop Adjustments	17
Torque Specs	17
Drawings and Parts List	18-23
3700 Series Bases	
3700 Base Specs	25
Leveling the Scale	25
Signal Cable Connections	25
Overload Stop Adjustments	25
Torque Specs	25
Assy Drawings/ Parts, Outline Drawings	26-46

Pages are numbered consecutively beginning with the cover page.

This page left intentionally blank.

Introduction

Weigh-Tronix bench scales are divided into three types:

- Diamond series bench scale analog bases
- Torsion series bench scale analog bases
- 3600 series bench scale Quartzell bases
- 3700 series bench scale analog bases

This manual is divided into major sections dealing with each of these bench scale base types. There is some information which applies to all of the bases. This information is given below.

Weigh-Tronix bench scale bases are available in stainless steel for use in sanitary or hostile environments and in painted carbon steel for use at less demanding sites. The Weigh-Tronix weight sensor is potted to provide corrosion resistance and to permit cleaning. A built-in bubble level and adjustable feet provide convenience in leveling the scale.

Place the scale on a flat, rigid, vibration-free surface. For the diamond series or torsion series bench scales, lift the scale platform straight up, removing it from the frame. Figure 1 shows the diamond series scale. Figure 2 shows the torsion series bench scale. See Figure 3 for the 3600 series and Figure 4 for the 3700 series. Loosen each leveling-foot lock nut, as required. Adjust the leveling feet until the bubble level shows that the frame is level. All leveling feet must be in firm contact with the mounting surface. Make sure that the weight sensor signal cable is routed properly and will not interfere with platform movement. Tighten each leveling foot lock nut as required.

Diamond Base Bench Scales

Diamond Base Specs

Platform Dimensions		Capacity		Weigh Bar
Inches	Centimeters	lb	kg	Output (mV/V)
14 x 14	35.56 x 35.56	30	13.61	0.6
18 x 18	45.72 x 45.72	50	22.68	1.0
18 x 24	45.72 x 60.96	100/200	50/100	1.0
20 x 20	50.80 x 50.80	100	45.35	1.0
24 x 24	60.96 x 60.96	200	90.70	1.0

Torque spec is 55 ft lbs for the mounting bolts

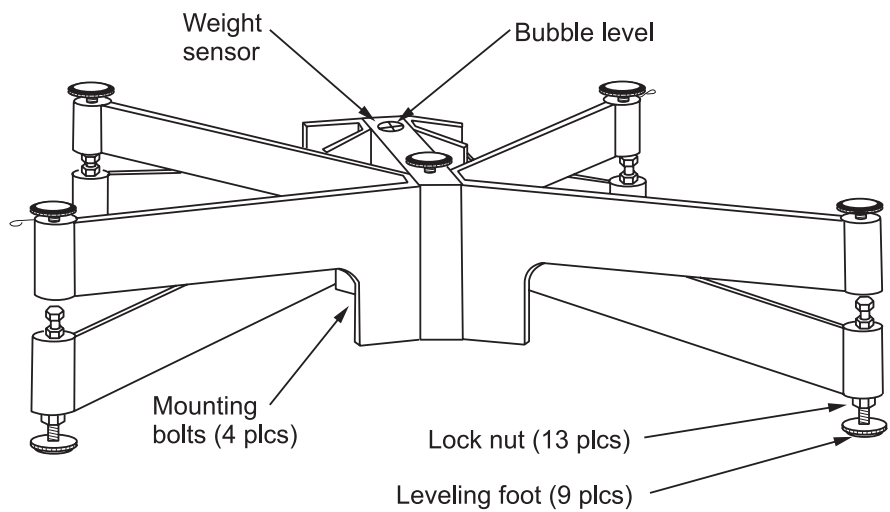


Figure 1
Platform Leveling Adjustments

Signal Cable Connections

Terminal (NEMA IV)	Wire Color	Description	Desktop Connections
1	GRN	+Excitation	B
2	YEL*	+Sense	F
3	WHT	+Output	C
4	WHT/ORN	Shield (Gnd)	G
5	RED	-Output	A
6	BLU*	-Sense	E
7	BLK	-Excitation	D

*Note
Pins 1 and 2, and 6 and 7 are jumpered together when connected to a single cell analog base.

Scale Setup

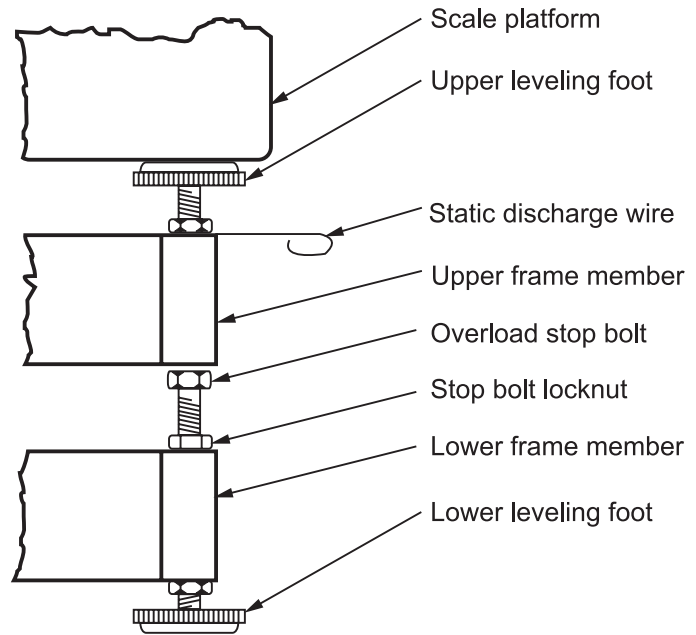


Figure 2
Overload stop adjustments

Overload stop adjustment

The overload stop bolts must be readjusted if either the weight sensor or any of the frame members are replaced. To adjust the overload stop bolts, refer to Figure 2 and proceed as follows:

1. Lift the scale platform straight up off the frame, then replace it upside down on the five upper leveling feet. Adjust the height of the outer four to evenly support the platform. Adjust the center foot so there is a small gap (about the thickness of a sheet of paper) between it and the platform. Tighten all five lock nuts when adjustments are complete

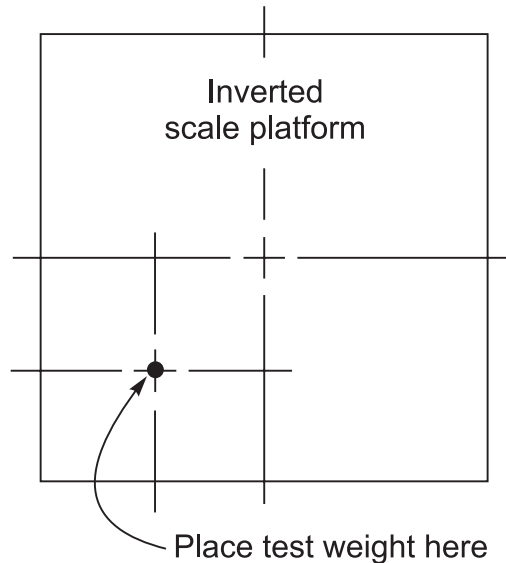


Figure 3
Test weight placement for overload
stop bolt adjustment

2. Refer to Figure 3 and place a test weight 102% of capacity in the center of one quadrant of the inverted platform. The weight indicator should display a reading above capacity.
3. Refer to Figure 2 and loosen the stop bolt lock nut corresponding to the quadrant supporting the test weight. Adjust the overload stop bolt so that it contacts the upper frame member and the weight indicator reads less than the applied test weight. Tighten the stop bolt lock nut.
4. Repeat steps 2 and 3 for each of the remaining corners of the scale.
5. Remove the test weight and place the scale platform upright on the upper leveling feet. Be sure that the two static discharge wires extend straight out from the upper frame members. These static discharge wires must contact the inside corners of the platform when it is in place.
6. Place 100% of capacity on the scale to verify correct operation in each corner and center of the platform.

Cleaning Instructions

Lift the platform straight up off the frame. Thoroughly clean the frame but do NOT apply steam or high-pressure hot water directly to the Weigh Bar. Ensure no debris remains in the overload stop gaps. Thoroughly clean the platform and then place it back onto the frame.

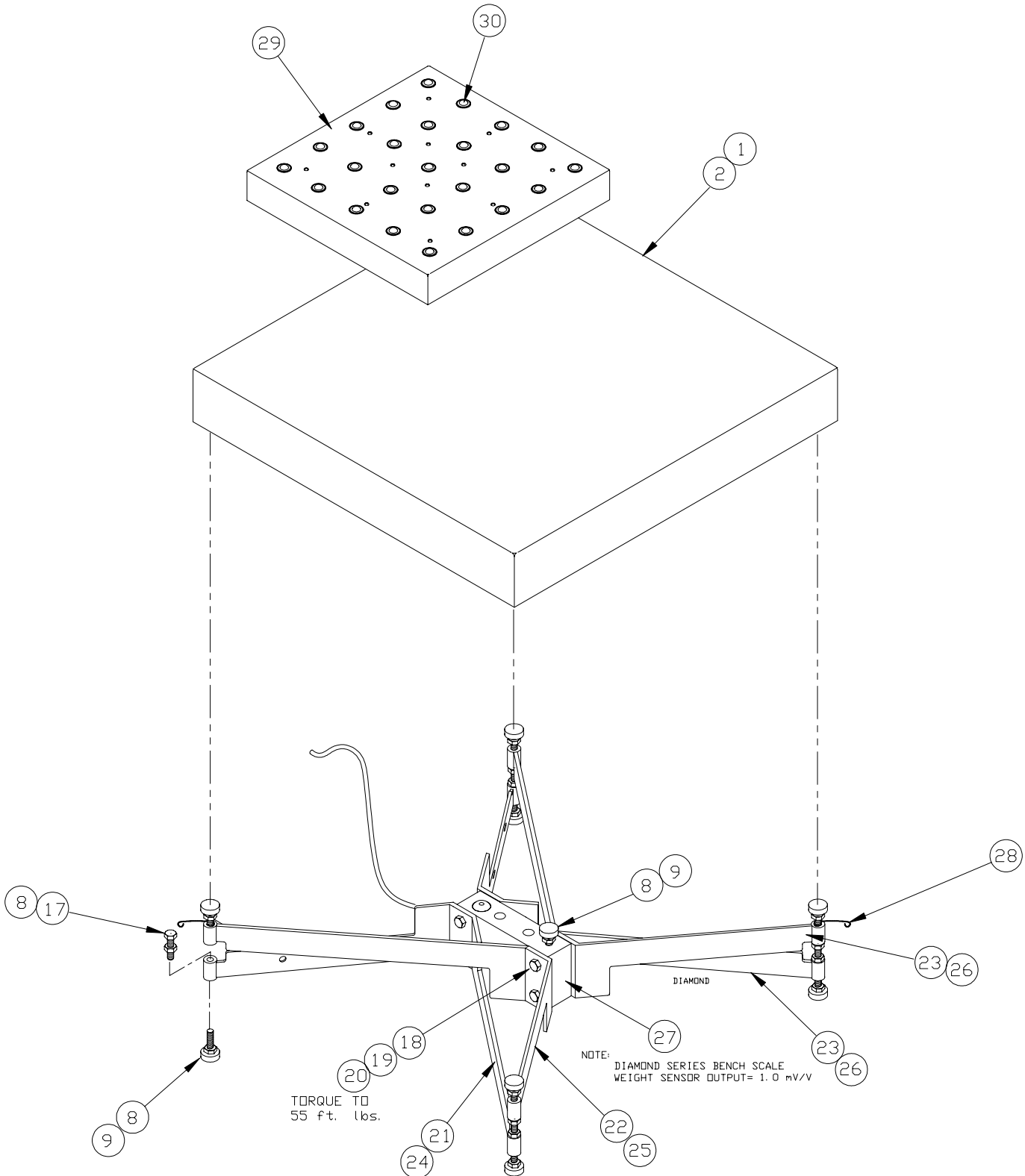
Torque Specification

The torque specification for the weight sensor mounting bolts is 55 ft lbs.

This page left intentionally blank.

DIAMOND SERIES BASES

MODEL 2020-100 (stainless) , 100 lb / 45 kg cap. , 20 "x 20" Deck
MODEL 2424-200 (stainless) , 200 lb / 90 kg cap. , 24 "x 24" Deck
ASSEMBLY



DIAMOND SERIES BASES PARTS LIST

ITEM NO.	DESCRIPTION	W-T P/N	QTY
1	Deck, Standard 20" X 20" (stainless)	21325-0038	1
2	Deck, Standard 24" X 24" (stainless)	21325-0046	1
8	Jam Nut, .31" - 18	14497-0217	13
9	Foot .31" - 18 x 1.00" (incl. jam nut)	53296-0010	9
17	Bolt, .31" X 1.00" L	14527-0187	4
18	Bolt, .44" X 2.75" L	17889-0448	4
19	Lock Washer, .44"	14474-0222	4
20	Nut, .44"	14471-0233	4
21	Spider(stainless)Left, 20 X 20 Deck w/ Cable Mounting Studs	21332-0039	1
22	Spider(stainless)Left, 20 x 20 Deck w/o Cable Mounting Studs	21332-0013	1
23	Spider(stainless)Right (20 x 20 Deck)	21332-0021	2
24	Spider(stainless)Left (24 x 24 Deck) w/ Cable Mounting Studs	21333-0038	1
25	Spider(stainless)Left (24 x 24 Deck) w/o Cable Mounting Studs	21333-0012	1
26	Spider(stainless)Right (24 x 24 Deck)	21333-0020	2
27	Weight Sensor Assy, 30 lb.14 x 14 Deck (10' cable w/tinned end)	49098-0067	1
	Weight Sensor Assy, 30 lb.14 x 14 Deck (10' cable w/connector)	49099-0025	1
	Weight Sensor Assy, 50 lb,18 x 18 Deck (10' cable w/tinned end)	49698-0067	1
	Weight Sensor Assy, 50 lb,18 x 18 Deck (10' cable w/connector)	49699-0025	1
	Weight Sensor Assy, 100 lb,20 x 20 Deck (10' cable w/tinned end)	49098-0075	1
	Weight Sensor Assy, 100 lb,20 x 20 Deck (10' cable w/connector)	49099-0033	1
	Weight Sensor Assy, 200 lb,20 x 20 Deck (10' cable w/tinned end)	49098-0083	1
	Weight Sensor Assy, 200 lb,20 x 20 Deck (10' cable w/connector)	49099-0041	1
	Weight Sensor Assy, 100 lb,18 x 24 Deck (10' cable w/tinned end)	49098-0075	1
	Weight Sensor Assy, 100 lb,18 x 24 Deck (10' cable w/connector)	49099-0033	1
	Weight Sensor Assy, 200 lb,18 x 24 Deck (10' cable w/tinned end)	49098-0083	1
	Weight Sensor Assy, 200 lb,18 x 24 Deck (10' cable w/connector)	49099-0041	1
	Weight Sensor Assy, 100 lb,24 x 24 Deck (10' cable w/tinned end)	49098-0075	1
	Weight Sensor Assy, 100 lb,24 x 24 Deck (10' cable w/connector)	49099-0033	1
	Weight Sensor Assy, 200 lb,24 x 24 Deck (10' cable w/tinned end)	49098-0083	1
	Weight Sensor Assy, 200 lb,24 x 24 Deck (10' cable w/connector)	49099-0041	1
28	Ground Spring	20850-0025	2
29	Ball Top Shroud Ass'y 20 x20 Stainless (optional)	50695-0062	1
	Ball Top Shroud Ass'y 24 x24 Stainless (optional)	50695-0088	1
30	Ball Units, Stainless (Qty of 25 for all, except 14 x14 base which is 16)	48594-0027	

Note:

The above list reflects the "most commonly requested" parts for *stainless* version Bases only.
Parts needed for Diamond Bench Scale Bases other than those listed,
Call Weigh-Tronix Service 800-458-7062

Note:

Items 8 & 9 make up the foot with jam nut assembly PN 53296-0010

This page left intentionally blank.

Torsion Bases

Torsion Base Specs

Platform Dimensions inches(cm)	Capacity	
	lb	kg
8.75 x 8.75 (22.23 x 22.23)	6	3
8.75 x 8.75 (22.23 x 22.23)	12	6
12 x 14 (30.5 x 35.6)	30	15
12 x 14 (30.5 x 35.6)	60	30
12 x 14 (30.5 x 35.6)	100	45

Torque spec is 80 in. lbs for the loadcell mounting bolts

Leveling the scale

Use the leveling feet and the level bubble to level the scale platform. When the scale is level, tighten the jam nuts up against the scale base.

Signal Cable Connections

Terminal	Wire Color	Description
1	Red	+Excitation
2	Red/White	+Sense
3	Green	+Output
4	Green/Yellow	Shield (Gnd)
5	White	-Output
6	Black/White	-Sense
7	Black	-Excitation

Overload Stop Adjustment

The overload stop adjustment comes preset from the factory. No field adjustment is required.

Torque Specs

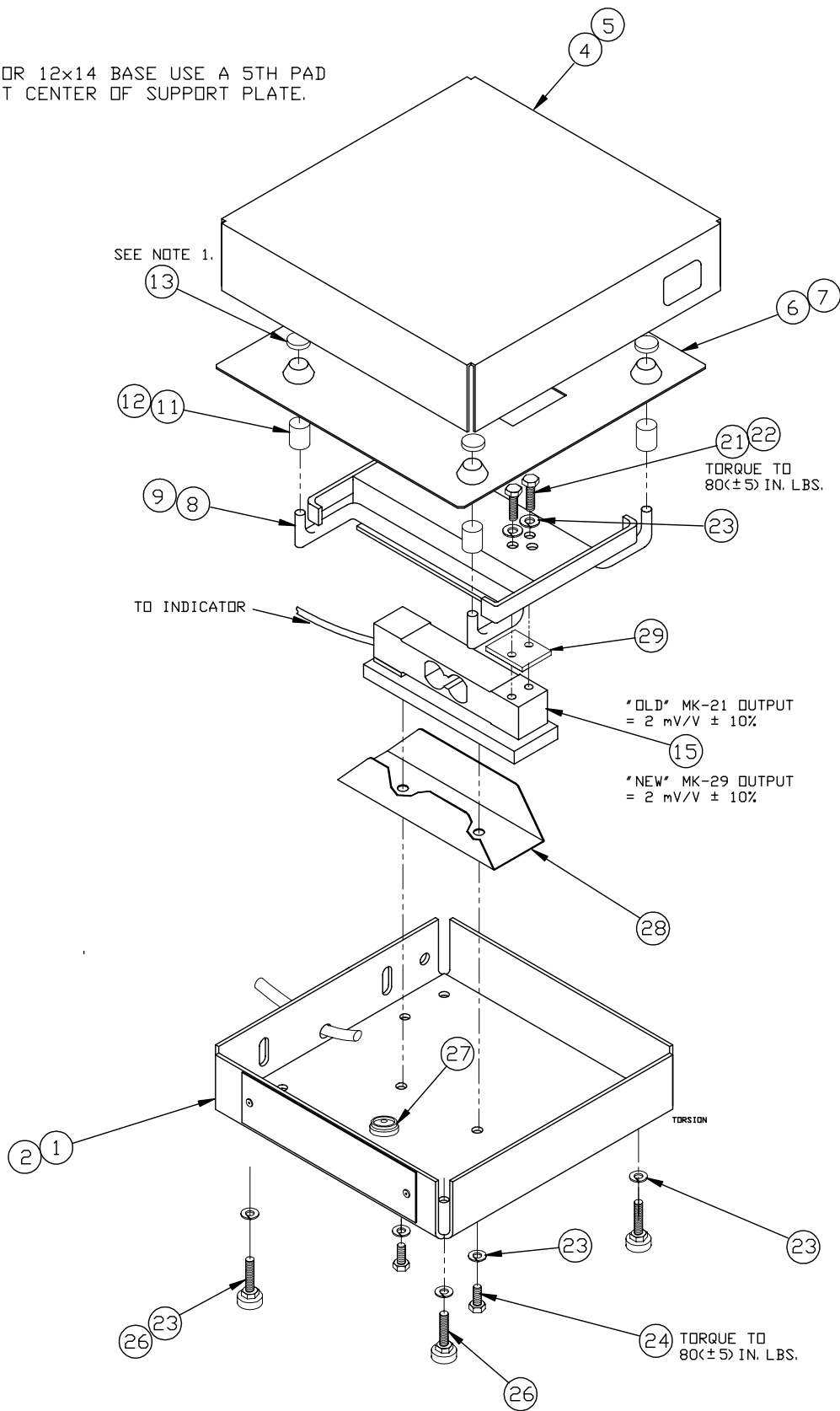
Weigh-Tronix specifies a torque of 80 (± 5) in. lbs. on the loadcell mounting bolts.

TORSION BASES STAINLESS

6 lb, 12 lb / 9" x 9" BASE
 30 lb, 60 lb, 100 lb / 12" x 14" BASE
ASSEMBLY

NOTES:

1. FOR 12x14 BASE USE A 5TH PAD AT CENTER OF SUPPORT PLATE.



TORSION BASES STAINLESS PARTS LIST

ITEM NO.	DESCRIPTION	W-T P/N	QTY
1	Base, 9" X 9"	1071-08063	1
2	Base, 12" X 14"	1071-08356	1
4	Shroud, 9" X 9"	1076-09428	1
5	Shroud, 12" X 14"	1076-08357	1
6	Support Plate (9" X 9" Base)	1069-08070	1
7	Support Plate (12" X 14" Base)	1069-01899	1
8	Load Bridge Assy (9" X 9" Base)	7066-08064	1
9	Load Bridge Assy (12" X 14" Base)	7066-08353	1
11	Bumper Support (9" X 9" Base)	1075-00243	4
12	Bumper Support (12" X 14" Base)	7075-00027	4
13	Pad	1075-00262	5
15	Load Cell Kits <i>(each kit includes tinned cable ends and splash guard, item 28)</i>		
	MK-29 Load Cell Kit w/ 10' cable, 15 lb (7 Kg), 9 x 9 Base	53240-0017	1
	MK-29 Load Cell Kit w/ 10' cable, 30 lb (15 Kg), 12 x14 Base	53240-0025	1
	MK-29 Load Cell Kit w/ 10' cable, 60 lb (30 Kg), 12 x14 Base	53240-0033	1
	MK-29 Load Cell Kit w/ 10' cable, 100 lb (60 Kg), 12" x 14" Base	53240-0041	1
21	Capscrew, .25"-20 X .75" L	14527-0039	2
22	Capscrew, .25"-20 X 1.00" L	14527-0034	2
23	Lockwasher, .25"	14474-0198	6
24	Capscrew, .25"-28 X .50" L	1007-02668	2
26	Foot Assy W/ Jamnut	7029-00150	4
27	Level Bubble	1083-00095	1
28	Splash Guard (MK-29)	53238-0010	1
29	Spacer	53236-0013	1

3600 Series QDT Bases

3600 Base Specs

Platform Dimensions		Capacity	
Inches	Centimeters	lb	kg
12 x 14*	30.5 x 35.6	10	5
12 x 14*	30.5 x 35.6	50	25
12 x 14*	30.5 x 35.6	100	50
12 x 14*	30.5 x 35.6	150	80
18 x 18	45.7 x 45.7	200	110
18 x 18	45.7 x 45.7	300	160

*Torque spec is 90 in. lbs for the Quartzell® mounting bolts. All others are 40 ft. lbs.

Leveling the scale

Use the leveling feet to level the scale platform. When the scale is level, tighten the jam nuts up against the scale base.

Signal Cable Connections

Terminal (NEMA IV)	W-T Wire Color	Description
1	Red	7.5 volts
2	Blue	REC B
3	Yellow	XMT B
4	—	NOT USED
5	Black	GRND
6	—	NOT USED
7	Green	XMT A
8	White	REC A
Shell	Drain wire	SHIELD

Replacing the Quartzell®

1. Remove the scale shroud and load bridge pad.
2. Place your hand on the load bridge, near the two flat head screws or 9/16" bolts that hold the load bridge to the Quartzell®. Gently loosen the two screws or bolts with a torque wrench. **DO NOT USE A "T" HANDLE ALLEN WRENCH.** Doing so may cause damage to the crystals in the Quartzell®. This damage is not covered by warranty. Remove the screws or bolts, remove the load bridge and the Quartzell® spacer.

3. Set the scale on its side and remove the screws or bolts holding the Quartzell® to the scale base.
4. Unplug the Quartzell® and reinstall the new Quartzell®.
5. Install the bottom bolts or screws and torque them to 90 in. lbs. (± 5) for the screws and 40 ft. lbs for the bolts. Set the scale on its feet. Reassemble the spacer and the load bridge. Torque the screws to 90 in. lbs. (± 5) and the bolts to 40 ft. lbs.
6. Put the load bridge pad and shroud back on the scale.

Overload Stop Adjustments

1. Place 102% of full scale capacity over each of the corners of the scale, one at a time.
2. Adjust each screw until the displayed weight starts to go down. Do this for all corners. The center stop is normally preset at the factory. No field adjustment is required.
3. Recalibrate the scale. Refer to the indicator Service Manual.

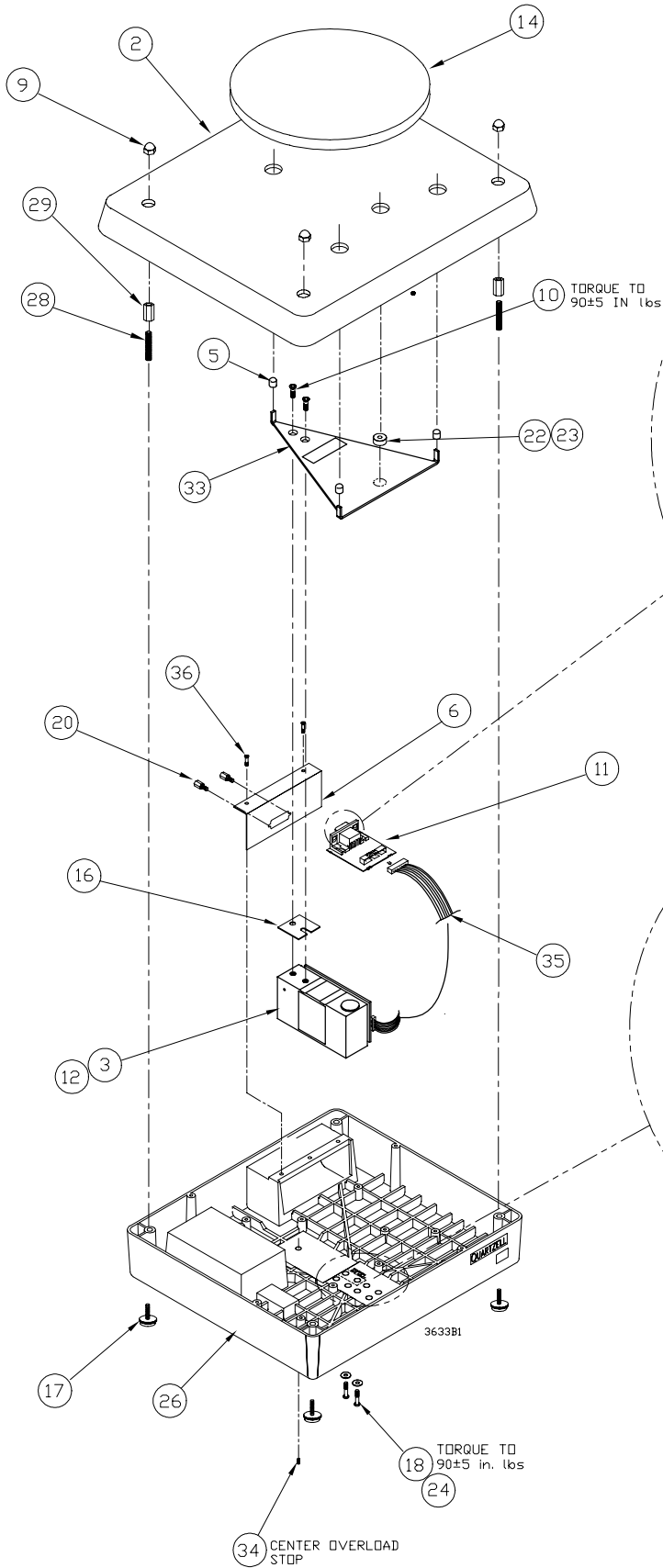
Torque Specs

Weigh-Tronix specifies a torque of 90 (± 5) in. lbs. on the Quartzell mounting bolts of the 10 lb capacity base and 40 ft. lbs. on the other capacities.

3633T QDT BENCH BASE

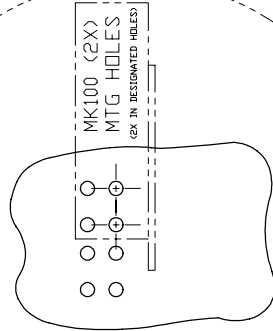
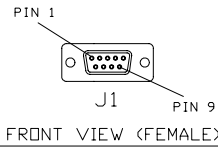
10 lb/5 kg cap. , 12" x 14" BASE

ASSEMBLY



INTERFACE PC BD I/O CONNE-
CTOR PIN IDENTIFICATION

PIN NO.	"INDICATOR" SIGNAL
J1-7	XMT A
J1-3	XMT B
J1-8	REC A
J1-2	REC B
J1-1	+7.5 V
J1-5	GROUND
SHELL	SHIELD



ENLARGED FOR CLARITY
VIEWED FROM FRONT
OF SCALE

3633B1

3633T QDT BENCH BASE

10 lb/5 kg cap. , 12" x 14" BASE

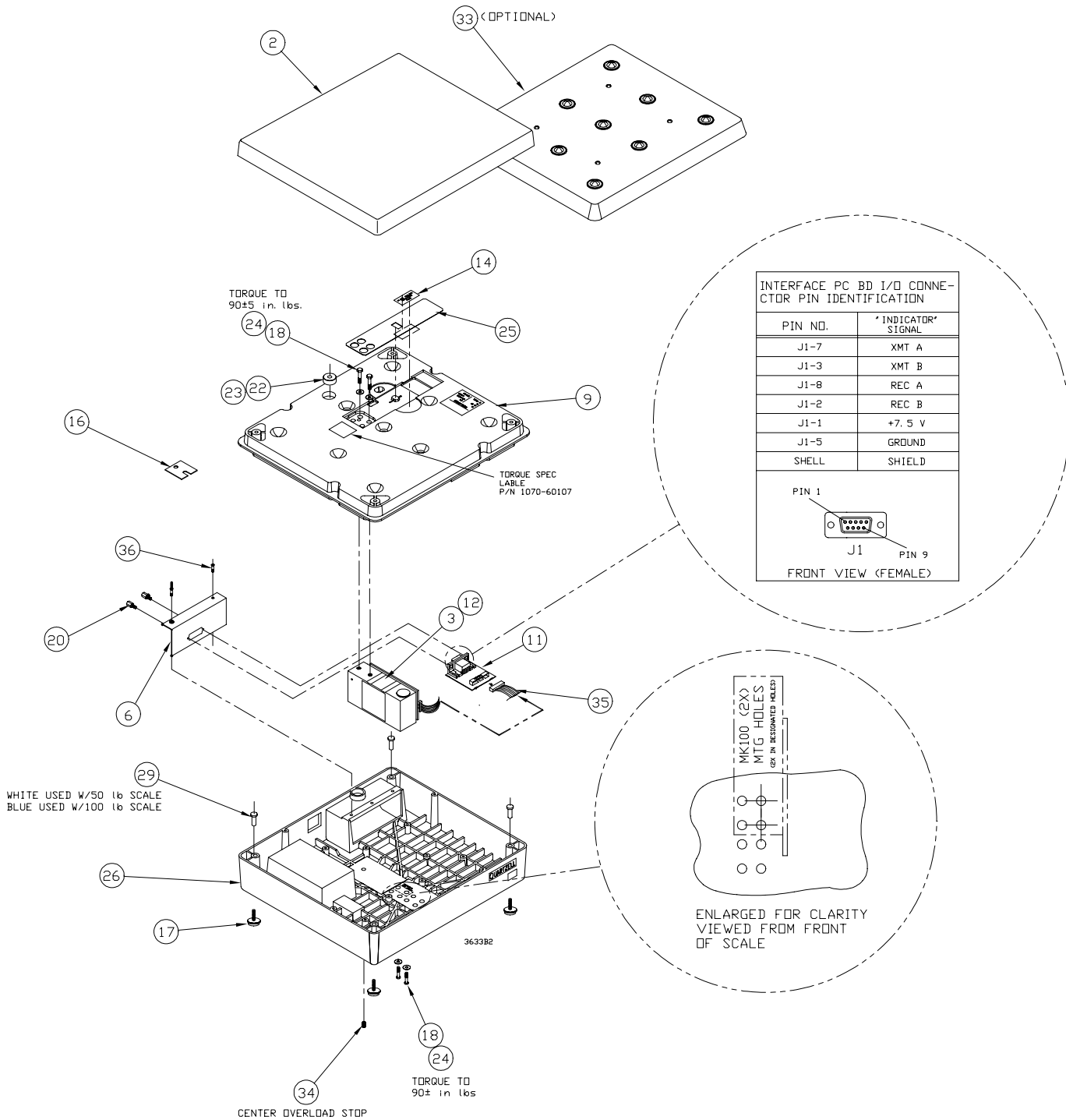
PARTS LIST

ITEM NO.	DESCRIPTION	W-T P/N	QTY
1	Remote Indicator I/O Intfc Cable Assy <i>(not shown)</i> (call W-T sales / service for length options)	-----	---
	Quartzell Base to WI-130 cable assy	49385-xxxx	1
	Quartzell Base to PC-810 cable assy	49386-xxxx	1
2	Shroud (10 lb.)	1076-14894	1
3	Quartzell Assy, Smart II <i>(no longer available)</i>	N/A	N/A
	Quartzell Assy, Smart III <i>(no longer available)</i>	N/A	N/A
	Quartzell Assy, Smart IV	7153-16523-05	1
5	Vinyl Cap	1051-13968	3
6	I/O Connector Mtg Bracket	1067-14635-04	1
9	Acorn Nut, # 10	1028-16157	4
10	Screw, Flat Head, Hex Soc, 1/4-20 x 1.00"L	1018-11594	2
11	Interface Pc Board	7405-15686	1
12	Eprom (Quartzell pc bd) Smart II <i>(no longer available)</i>	N/A	N/A
	Eprom (Quartzell pc bd) Smart III <i>(no longer available)</i>	N/A	N/A
	Eprom (Quartzell pc bd) Smart IV	1150-16263	1
14	Platter	1076-14738	1
16	Aluminum Spacer	1043-13977	1
17	Foot	7075-16213	4
18	Capscrew, 1/4 x .1.00"L	1007-15463	2
20	Standoff,m/f #4 x 3/16 HEX x .19"L	1044-01085	2
22	Level Bubble	1083-00095	1
23	Adhesive Tape for Bubble	1045-13049	1
24	Flat Washer, 1/4"	1029-00099	2
26	Base	7069-16183-02	1
28	Slotted Stud, 1/4-20 x 2.00"L	1015-14427	4
29	Shroud Spacer	1043-14426	4
33	Loadbridge	1066-16179	1
*34	Screw, Hex Socket (overload stop)	1011-04367	1
35	Cable Assy (Quartzell-to-intfc pc bd)	7140-14118	1
36	Screw,#6-32 x .25"L	1009-10039	2

* Center overload stops only. Stops are preset at factory and require no adjustments.

3633T QDT BENCH BASE

50 lb/25kg, 100 lb/50kg, 150 lb/80kg cap , 12" x 14" *BASE*
ASSEMBLY



3633T QDT BENCH BASE

50 lb/25kg, 100 lb/50kg, 150 lb/80kg cap , 12" x 14" BASE

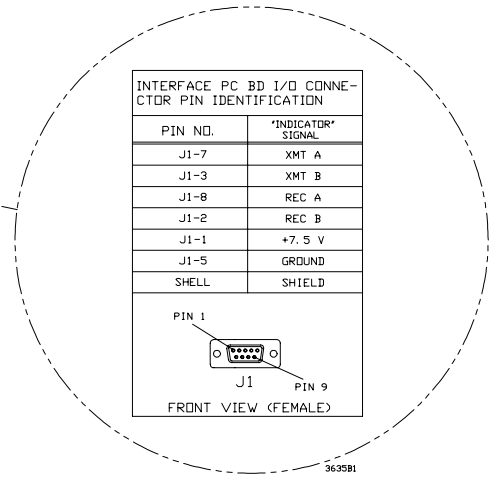
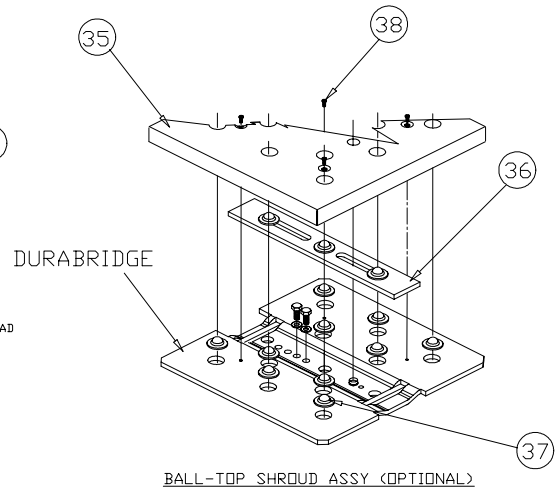
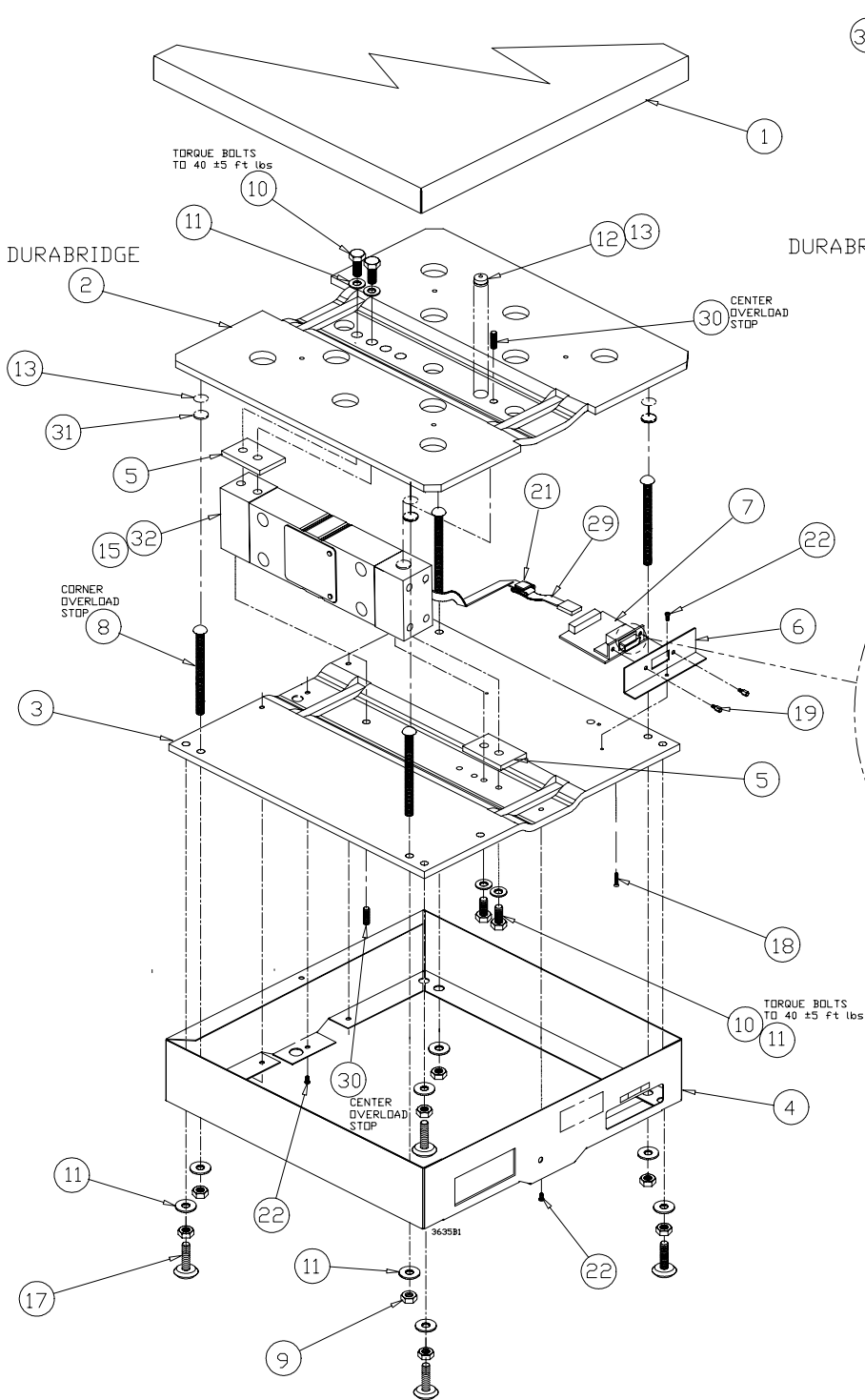
PARTS LIST

ITEM NO.	DESCRIPTION	W-T P/N	QTY
1	Remote Indicator I/O Intfc Cable Assy (<i>not shown</i>) (call W-T sales / service for length options)	-----	---
	Quartzell Base to WI-130 cable assy	49385-xxxx	1
	Quartzell Base to PC-810 cable assy	49386-xxxx	1
2	Shroud (flat top)	1076-14742	1
3	Quartzell Assy (50 lb/25kg, 100 lb/50kg, 150 lb/80 cap.) Smart II & III (<i>N/A</i>)	<i>N/A</i>	<i>N/A</i>
	Quartzell Assy (50 lb/25kg, kg cap.) Smart IV-85	7153-16523-25	1
	Quartzell Assy (100 lb/50kg cap.) Smart IV-85	7153-16523-50	1
	Quartzell Assy (150 lb/80kg cap.) Smart IV-85	7153-16523-80	1
6	I/O Connector Mtg Bracket	1067-14635-04	1
9	Loadbridge	1066-15993	1
11	Interface Pc Board	7405-15686	1
12	Eprom (Quartzell pc bd) Smart II & III (<i>not available</i>)	<i>N/A</i>	<i>N/A</i>
	Eprom, (All Capacities) Quartzell pc bd Smart IV	1150-16263	1
14	Sealing Cover Label	1070-60103	1
15	SCREW, #6 x .38"L	1009-05758	4
17	Foot	7075-16213	4
18	Capscrew, 1/4 x .100"L	1007-02617	4
20	Standoff,m/f #4 x 3/16HEX x .19"L	1044-01085	2
22	Level Bubble	1083-00095	1
23	Adhesive Tape (for bubble)	1045-13049	1
24	Flat Washer, 1/4"	1029-80008	4
25	Access/Security Cover	1069-15766	1
26	Base	7069-15278	1
29	Load Stop Pin (50 lb./25 kg)	1090-16074-32	4
	Load Stop Pin (100 lb./50 kg)	1090-16074-50	4
33	Ball Top Shroud (optional)	7076-15118	1
*34	Screw, Locking Hex Socket (overload stop)	1011-04367	1
35	Cable Assy (Quartzell-to-Intfc pc bd)	7140-14118	1
36	Screw,#6-32 x .25"L	1009-10039	2

* Item 34 is preset at factory. No field adjustment required.

3635T QDT BENCH BASE

100 / 250 lb cap. , 18" x 18" BASE
ASSEMBLY



3635T QDT BENCH BASE
 200 lb / 110 kg, 300 lb/160 kg cap. , 18" x 18" BASE
PARTS LIST

ITEM NO.	DESCRIPTION	W-T P/N	QTY
1	Shroud	1076-15050	1
2	Durabridge	7066-15056	1
3	Durabridge Base	7071-15057	1
4	Scale Enclosure	7069-15165	1
5	Spacer	1043-15054	2
6	I/O Connector Mounting Bracket	1067-15725	1
7	Interface Pc Board	7405-15686	1
8	Carriage Bolt, 3/8" x 3.50"L (overload stop)	1019-15195	4
9	Jam Nut, 3/8"	1022-00241	4
10	Cap Screw, 3/8" x 1.00"L (GR8)	1007-02308	4
11	Flat Washer, 3/8"	1029-00093	12
12	Level Bubble	1083-00095	1
13	Adhesive Tape (used for bubble & spacer pads)	1045-13049	5
15	Eprom (Quartzell pc. bd.) Smart III <i>(Not Available)</i>	N/A	N/A
	Eprom (Quartzell pc. bd.) Smart IV	1150-16263	1
16	Remote Indicator I/O Intfc Cable Assy <i>(not shown)</i> (call W-T sales / service for length options)	—————	———
	Quartzell Base to WI-130 cable assy	49385-xxxx	1
	Quartzell Base to PC-810 cable assy	49386-xxxx	1
17	Foot Assy w/ Jam Nut	7075-13082	4
18	Sealing Screw, #6 x .50"L	1001-02162	1
19	Standoff, m/f #4 x 3/16HEX x .19"L	1044-01085	2
21	Cable Clamp	1074-00205	1
22	Screw, #6-32 x .38"L	1009-05758	2
29	Cable Assy (Quartzell-to-Intfc. pc. bd.)	7140-14118	1
*30	Set Screw, 1/4 x .38"L (overload stop)	1011-04367	2
31	Spacer	1043-12751	4
32	Quartzell Assy , (200 lb, 300 lb) Smart III <i>(Not Available)</i>	N/A	N/A
	Quartzell Assy, (200 lb/110 kg) Smart IV-85	7153-16523-110	1
	Quartzell Assy, (300 lb/165 kg) Smart IV-85	7153-16523-165	1
35	Ball Top Shroud (optional)	1076-15066	1
36	Ball Retainer	1069-15068	1
37	Transfer Ball	1049-15072	13
38	Screw, #10-32 x .50"L	1006-03193	4

* Preset at factory, no adjustment required.

This page left intentionally blank.

3700 Series Bases

3700 Base Specs

Platform Dimensions		Capacity	
Inches	Centimeters	lb	kg
10 x 10*	25.4 x 25.4	10	5
12 x 14	30.5 x 35.6	25	12
12 x 14	30.5 x 35.6	50	25
12 x 14	30.5 x 35.6	100	50
18 x 18**	45.7 x 45.7	300	160

* Torque spec is 90 in. lbs for the loadcell mounting bolts.
** Torque spec is 40 ft. lbs.
All others are 95 in. lbs.

Leveling the scale

Use the leveling feet to level the scale platform. When the scale is level, tighten the jam nuts up against the scale base.

Signal Cable Connections

Terminal (NEMA IV)	Wire Color	Description
1	Green	+Excitation
2	—	+Sense
3	White	+Output
4	Drain wire	Shield (Gnd)
5	Red	-Output
6	—	-Sense
7	Black	-Excitation

Overload Stop Adjustments

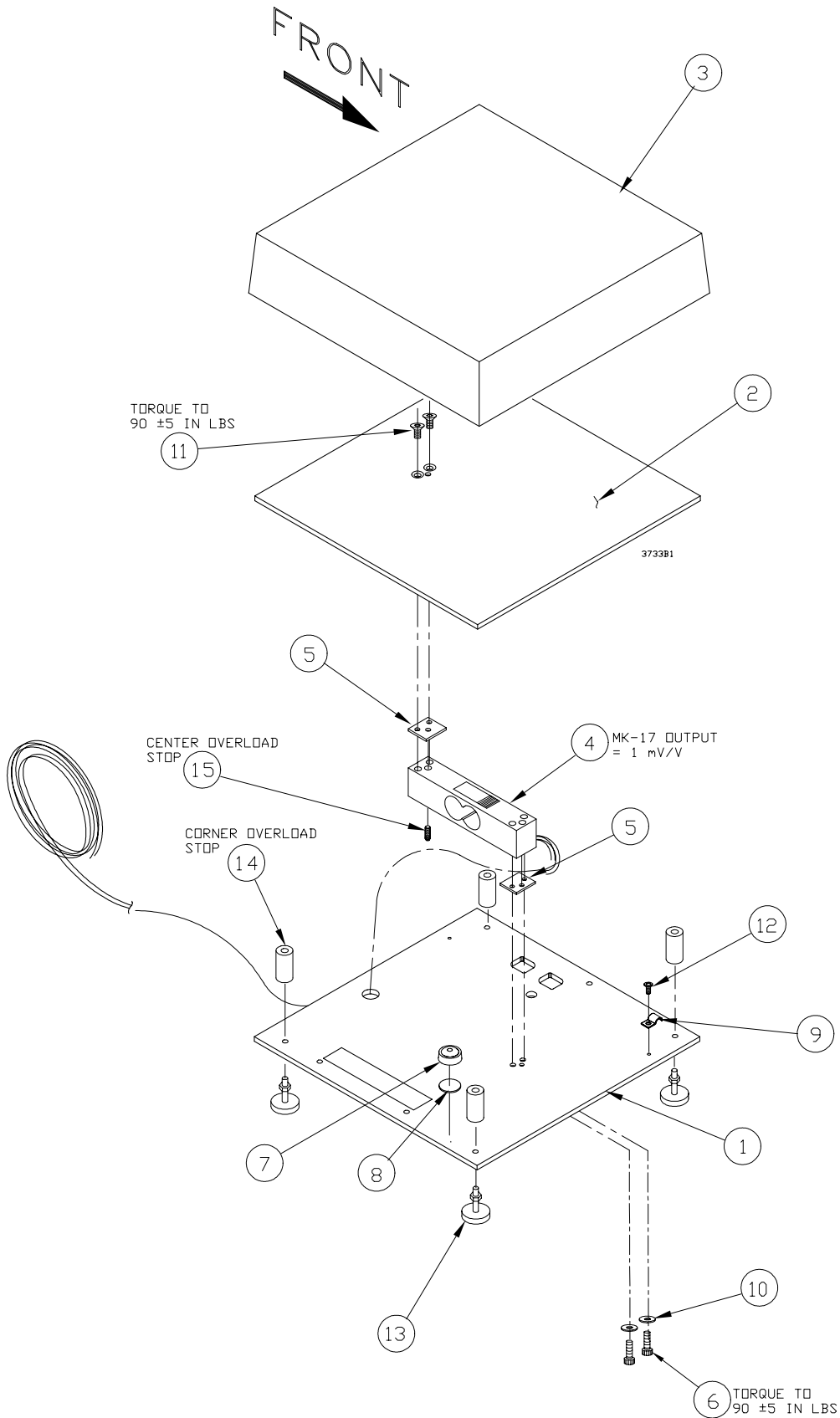
1. Place 102% of full scale capacity over one of the corners of the scale.
2. Adjust each screw until the displayed weight starts to go down. Do this for all for corners and the center stop.
3. Recalibrate the scale. Refer to the indicator Service Manual.

Torque Specs

Weigh-Tronix specifies a torque of 90 (± 5) in. lbs. on the loadcell mounting bolts.

3733 BENCH BASE

10 lb/5 kg cap. , 10" x 10" BASE
ASSEMBLY



3733 BENCH BASE
 10 lb/5 kg cap. , 10" x 10" BASE
PARTS LIST

ITEM NO.	DESCRIPTION	W-T P/N	QTY
1	Base, 10" x 10"	1069-14676	1
2	Loadbridge	1066-08889	1
3	Shroud, 10" x 10"	1076-08887	1
4	Weight Sensor, 10 lb / 7½ kg (MK27)	7154-16355-07	1
5	Spacer	1043-08890	2
6	Capscrew, 1/4 x .5/8"L	1007-00128	2
7	Level Bubble	1083-00095	1
8	Adhesive Tape for Bubble	1045-13049	1
9	Cable Clamp 1/4"	1074-00392	1'
10	Flat Washer, 1/4"	1029-80008	2
11	Flat Head, HX SOC Screw, 1/4-20 x 5/8"L	1007-00813	2
12	Screw, #6-32 x .25"L	1009-10039	1
13	Leveling Foot	7075-15475-02	4
14	Nylon Spacer	1043-10409	4
*15	Setscrew, 1/4 x 5/8L (overload stop)	1011-02412	1

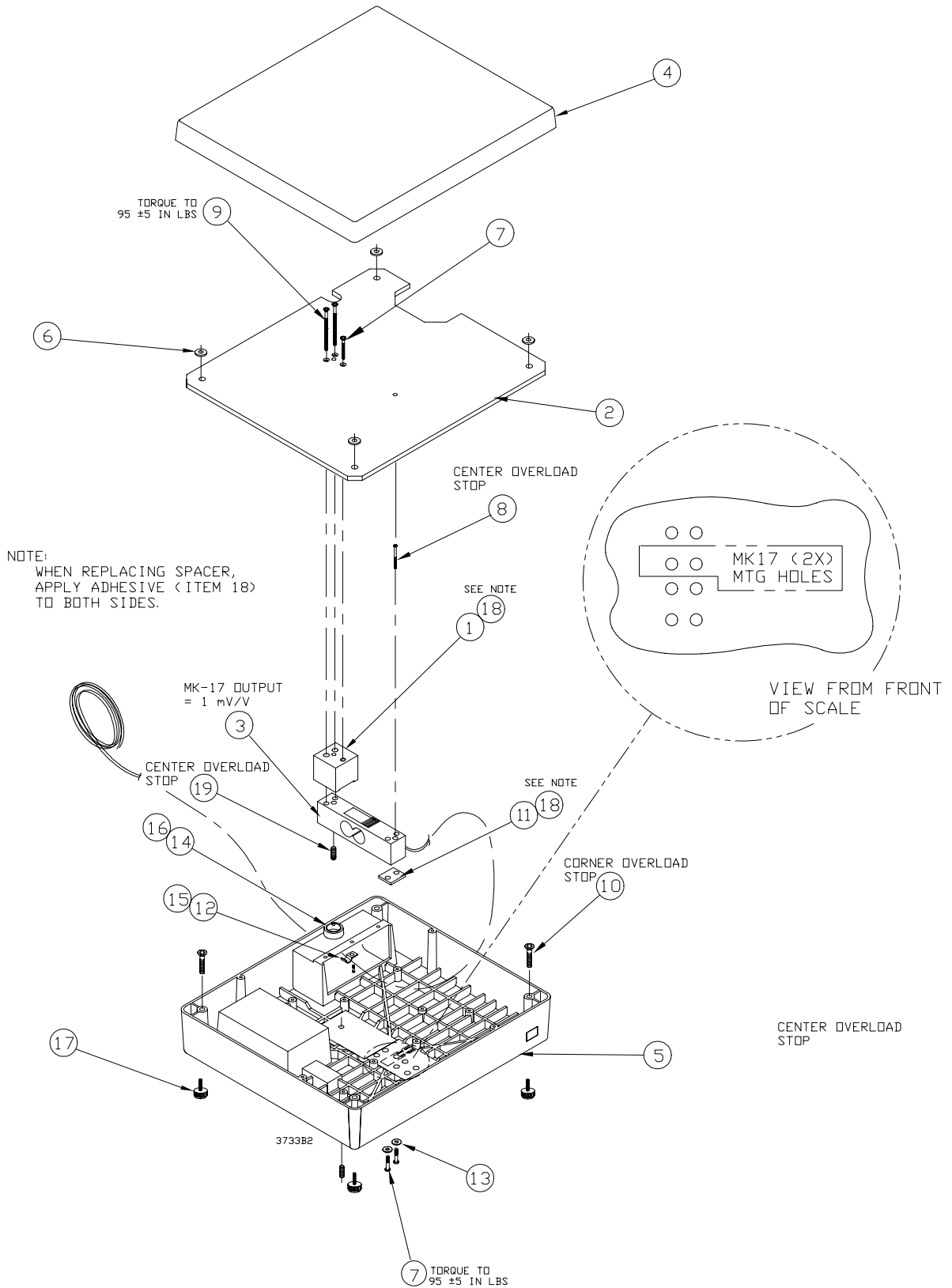
* Preset at factory, no adjustment required.

3733 BENCH BASE

25 lb/12 kg, 50 lb/25 kg, 100 lb/50 kg cap.

12" x 14" BASE

ASSEMBLY



3733 BENCH BASE

25 lb/12 kg, 50 lb/25 kg, 100 lb/50 kg cap.

12" x 14" BASE

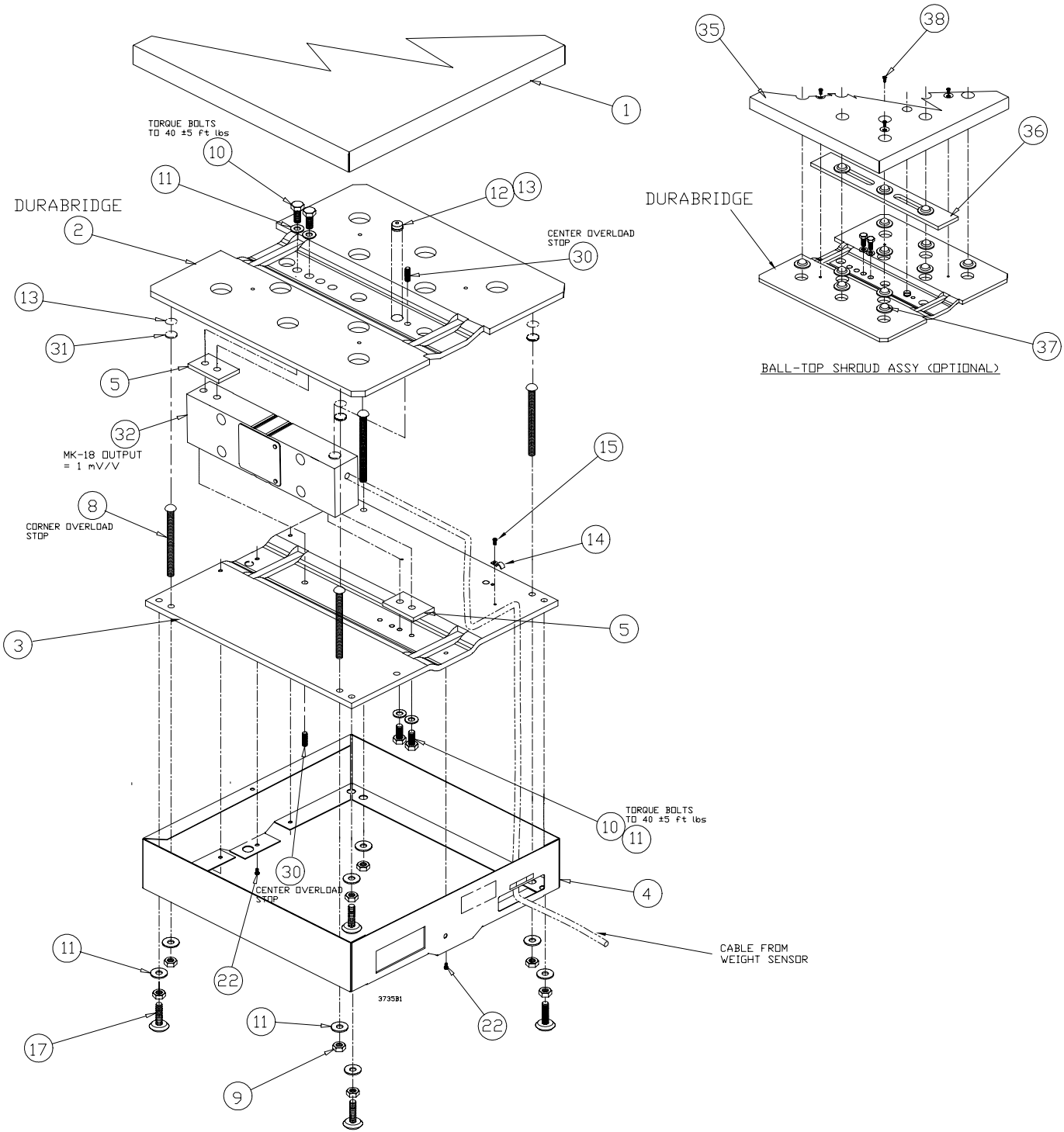
PARTS LIST

ITEM NO.	DESCRIPTION	W-T P/N	QTY
1	Top Spacer	1043-14714	1
2	Loadbridge	1066-14713	1
3	Weight Sensor, 25 lb / 15 kg (MK27)	7154-16355-15	1
	Weight Sensor, 50 lb / 30 kg (MK27)	7154-16355-30	1
	Weight Sensor, 100 lb / 50 kg (MK28)	7154-16355-50	1
4	Shroud, 12" x 14"	1076-14742	1
5	Base, 12" x 14"	1069-15278-02	1
6	Dampener Pad	1075-14716	4
7	Capscrew, 1/4 -20 x 1.00"L	1007-15463	2
*8	Flat Head Screw, 1/4 x 1 3/4"L (center stop)	1018-15132	1
9	Flat Head HxSoc Screw, 1/4-20 x 2.00"L	1007-15147	2
10	Flat Head Screw, 1/4 x 1.00"L (corner stop)	1018-11594	4
11	Bottom Spacer	1043-09522	1
12	Screw,#6-32 x 3/8"L	1009-05758	1
13	Flat Washer, 1/4"	1029-00099	2
14	Adhesive Tape for Bubble	1045-13049	1
15	Cable Clamp 1/4"	1074-00392	1
16	Level Bubble	1083-00095	1
17	Leveling Foot	7075-15475-02	4
18	Adhesive , (cyanoacrylate)	1045-09103	4 ml
*19	Setscrew, 1/4 x5/8L (center stop)	1011-02412	1

* Preset at factory, no adjustment required.

3735 BENCH BASE

300 lb / 160 kg cap. , 18" x 18" BASE
ASSEMBLY



3735 BENCH BASE

300 lb / 160 kg cap. , 18" x 18" BASE

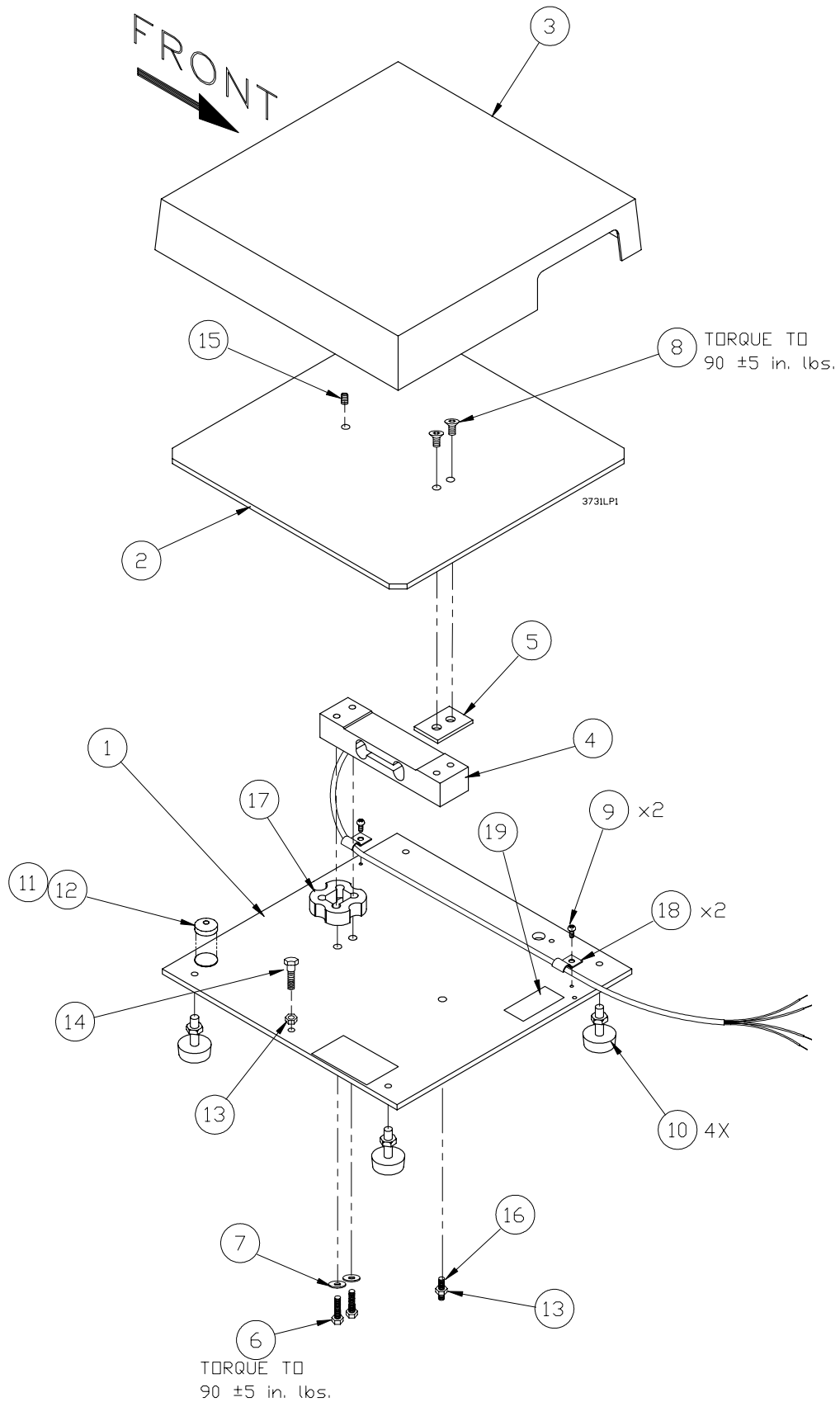
PARTS LIST

ITEM NO.	DESCRIPTION	W-T P/N	QTY
1	Shroud	1076-15050	1
2	Durabridge	7066-15056	1
3	Durabridge Base	7071-15057	1
4	ScaleEnclosure	7069-15165	1
5	Spacer	1043-15054	2
8	Carriage Bolt, 3/8" x 3 1/2"L (corner overload stop)	1019-15195	4
9	Jam Nut, 3/8"	1022-00241	4
10	Cap Screw, 3/8" x 1.00"L (GR8)	1007-02308	4
11	Flat Washer, 3/8"	1029-00093	12
12	Level Bubble	1083-00095	1
13	Adhesive Tape (used for bubble & spacer pads)	1045-13049	5
14	Cable Clamp	1074-00392	1
15	Screw, #6-32 x 1/4" L	1009-10039	1
17	Foot Assy w/ Jam Nut	7075-13082	4
22	Screw,#6-32 x 3/8"L	1009-05758	2
*30	Set Screw, 1/4 x 3/8"L (center overload stop)	1011-04367	2
31	Spacer	1043-12751	4
32	Weight Sensor , MK 28 (300 lb / 160 kg)	7154-16355-160	1
35	Ball Top Shroud (optional)	1076-15066	1
36	Ball Retainer	1069-15068	1
37	Transfer Ball	1049-15072	13
38	Screw, #10-32 x 1/2"L	1006-03193	4

* Preset at factory, no adjustment required.

3731LP BENCH BASE

10 lb/5 kg, 25 lb/12kg, 50 lb/25 kg cap. , 10" x 10" BASE
ASSEMBLY



3731LP BENCH BASE

10 lb/5 kg, 25 lb/12kg, 50 lb/25 kg cap. , 10" x 10" BASE

PARTS LIST

ITEM NO.	DESCRIPTION	W-T P/N	QTY
1	Base, 10" x 10"	1069-16439	1
2	Loadbridge	1066-16440	1
3	Shroud, 10" x 10"	1076-14678	1
4	Weight Sensor, 10 lb / 7.5 kg (MK27)	7154-16355-07	1
	Weight Sensor, 25 lb / 15 kg (MK27)	7154-16355-15	1
	Weight Sensor, 50 lb / 30 kg (MK27)	7154-16355-30	1
5	Spacer	1043-09522	1
6	Cap Screw, M6 x 25mm L	1007-16256	2
7	Flat Washer, 1/4"	1029-80008	2
8	Flat Head, HX SOC Screw, M6 x 20mm L	1007-16414	2
9	Screw,#6-32 x .25"L	1009-10039	1
10	Leveling Foot Assy	7075-10256	4
11	Level Bubble	1083-00095	1
12	Adhesive Tape for Bubble	1045-13049	1
13	Jam Nut	14497-0209	2
14	Cap Screw, 1/4 x 1.5" L (<i>overload stop</i>)	1007-02686	1
*15	Set Screw, 1/4 x .25" L (<i>overload stop</i>)	1011-14128	1
16	Set Screw, 1/4 x .875" L (<i>overload stop</i>)	1011-16456	1
17	Spacer	1043-16261-02	1
18	Cable Clamp	1074-00392	2
19	Color Code Label	55136-0019	1

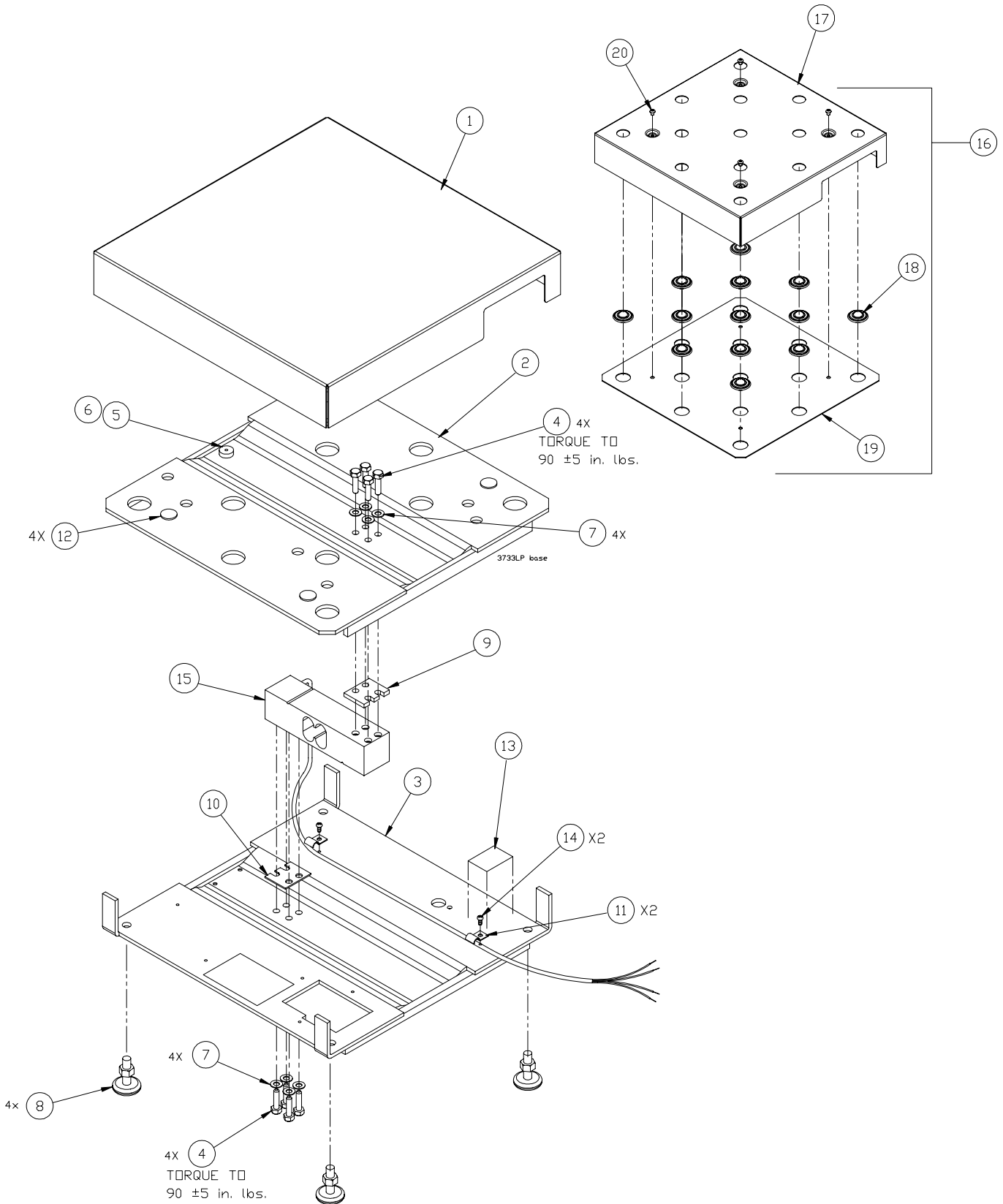
* Preset at factory, no adjustment required.

3733LP BENCH BASE

100 lb/50 kg, 250 lb/125 kg cap.

14" x 14" BASE

ASSEMBLY



3733LP BENCH BASE

100 lb/50 kg, 250 lb/125 kg cap.

14" x 14" BASE

PARTS LIST

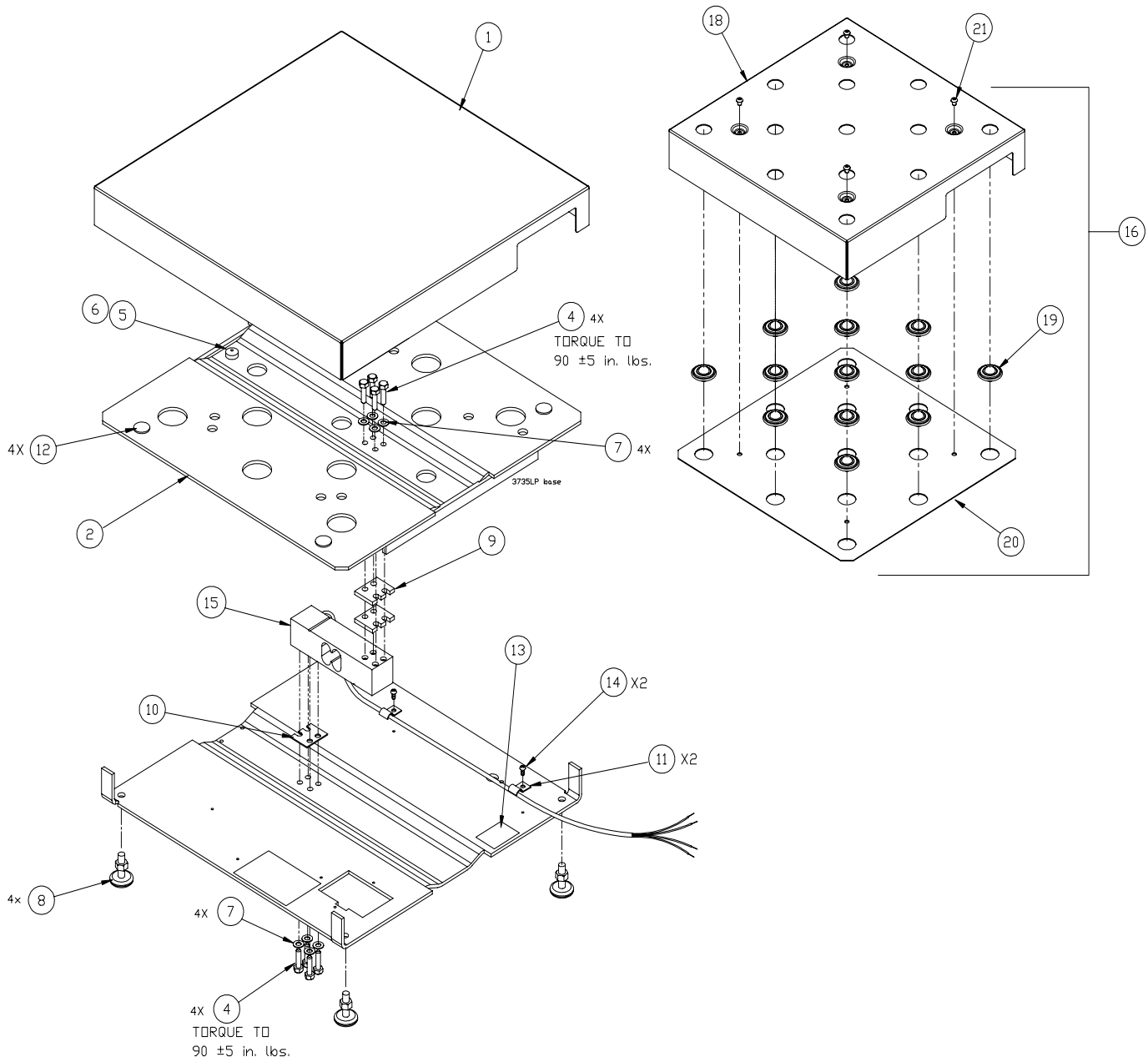
ITEM NO.	DESCRIPTION	W-T P/N	QTY
1	Shroud, SS, 14" x 14"	55996-0018	1
2	Loadbridge, 100 lb	55982-0014	1
	Loadbridge, 250 lb (<i>shown in illustration</i>)	55982-0022	1
3	Base, 100 lb	55981-0015	1
	Base, 250 lb (<i>shown in illustration</i>)	55981-0023	1
4	Bolt, HX , M6 x 20mm L	54004-1548	8
5	Level Bubble	1083-00095	1
6	Adhesive Tape for Bubble	1045-15177	1
7	Flat Washer, 1/4"	1029-80008	8
8	Foot Assy	7075-13082	4
9	Spacer, .19" thk.	1043-15830-04	1
10	Spacer, .063" thk.	1043-15830-03	1
11	Clamp	1074-00392	2
12	Adhesive Pad	AH302900	4
13	Color Code Label	55136-0019	1
14	Screw, #6-32 x .25"L	1009-10039	2
15	Weight Sensor, 100 lb / 50 kg (MK28)	7154-16355-50	1
	Weight Sensor, 250 lb / 125 kg (MK28)	7154-16355-150	1
16	Ball Top Shroud Assy (<i>optional</i>)	56019-0019	1
17	Ball Top Shroud (14" x 14")	55998-0016	1
18	Ball Unit	48594-0019	13
19	Retainer Plate	56007-0013	1
20	Screw	1006-02039	4

3735LP BENCH BASE

100 lb/50 kg, 250 lb/125 kg cap.

18" x 18" BASE

ASSEMBLY



3735LP BENCH BASE

100 lb/50 kg, 250 lb/125 kg cap.

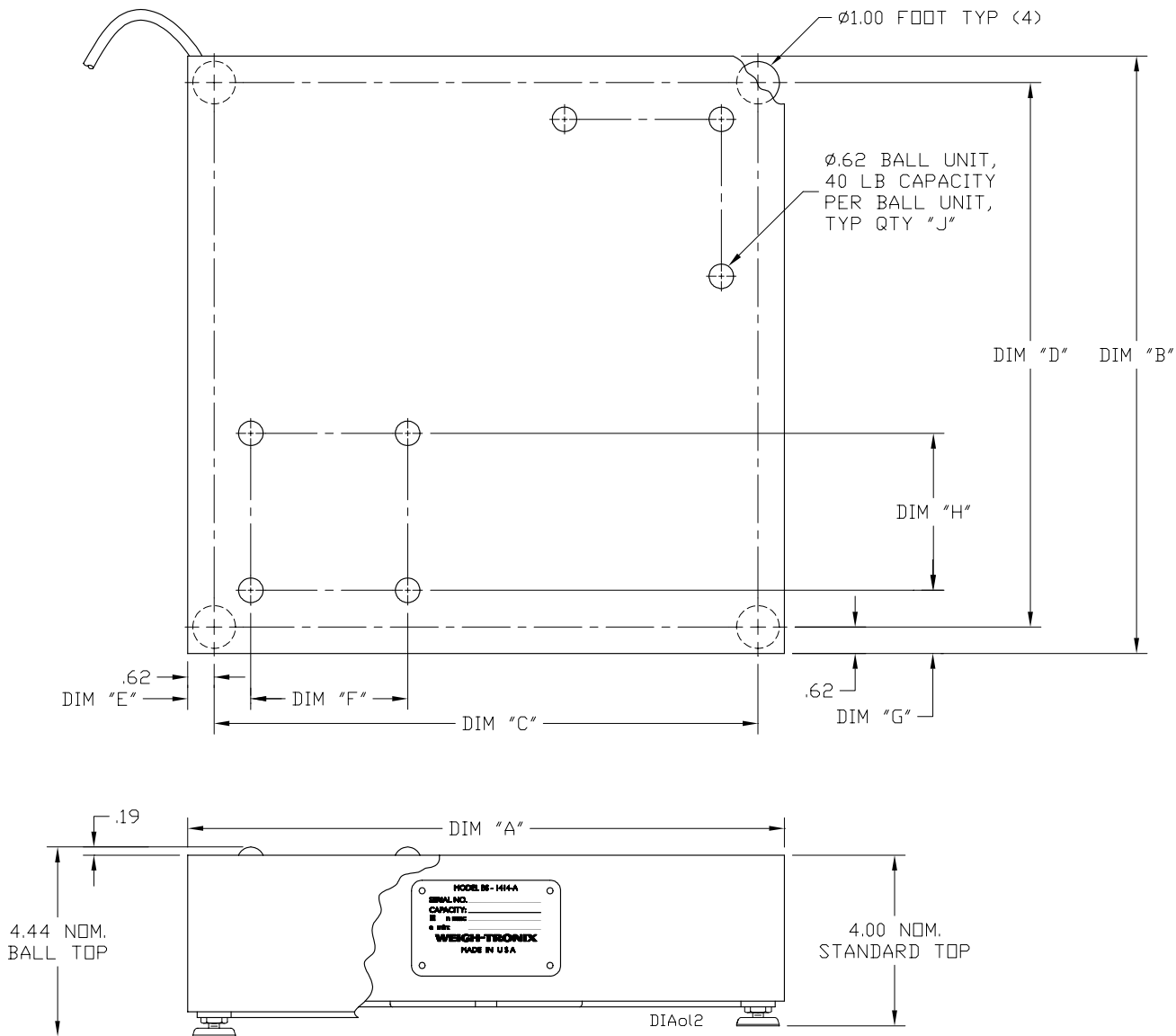
18" x 18" BASE

PARTS LIST

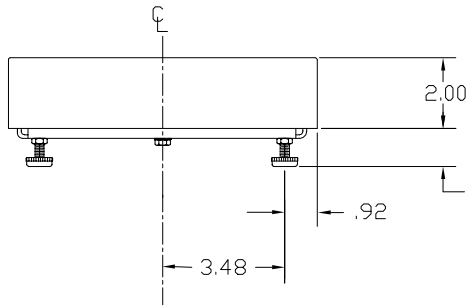
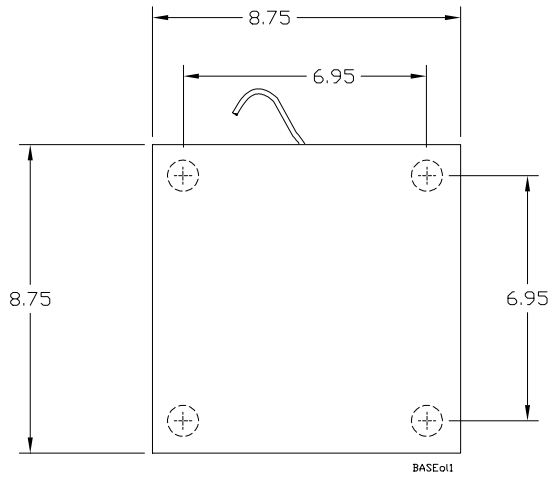
ITEM NO.	DESCRIPTION	W-T P/N	QTY
1	Shroud, SS, 14" x 14"	55997-0017	1
2	Loadbridge, 100 lb	55984-0012	1
	Loadbridge, 250 lb (<i>shown in illustration</i>)	55984-0020	1
3	Base, 100 lb	55983-0013	1
	Base, 250 lb (<i>shown in illustration</i>)	55983-0021	1
4	Bolt, HX , M6 x 20mm L	54004-1548	4
5	Level Bubble	1083-00095	1
6	Adhesive Tape for Bubble	1045-15177	1
7	Flat Washer, 1/4"	1029-80008	8
8	Foot Assy	7075-13082	4
9	Spacer, .19" thk.	1043-15830-04	2
10	Spacer, .063" thk.	1043-15830-03	1
11	Clamp	1074-00392	2
12	Adhesive Pad	AH302900	4
13	Color Code Label	55136-0019	1
14	Screw, #6-32 x .25"L	1009-10039	2
15	Weight Sensor, 100 lb / 50 kg (MK28)	7154-16355-50	1
	Weight Sensor, 250 lb / 125 kg (MK28)	7154-16355-150	1
16	Ball Top Shroud Assy	56019-0019	1
17	Bolt, HX , M6 x 30mm L	54004-1563	4
18	Shroud (18" x 18")	55999-0015	1
19	Ball Unit	1049-15072	13
20	Ball Retainer Plate	56023-0013	1
21	Screw	1006-02039	4

Diamond Series Outline Dimension Drawing

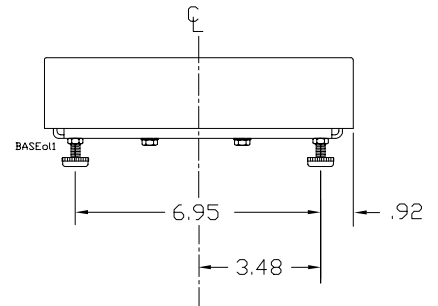
DIAMOND SERIES-- "BENCH BASES" DATA CHART									
NOMINAL SIZE	DIM "A"	DIM "B"	DIM "C"	DIM "D"	BALL PATTERN DIM'S (OPTIONAL)				
					DIM "E"	DIM "F" (TYP.)	DIM "G"	DIM "H" (TYP.)	QTY "J"
14 X 14	14.00	14.00	12.75	12.75	1.48	3.68	1.48	3.68	16
18 X 18	18.00	18.00	16.75	16.75	1.50	3.75	1.50	3.75	25
18 X 24	18.00	24.00	16.75	22.75	1.50	3.75	2.00	5.00	25
20 X 20	20.00	20.00	18.75	18.75	2.00	4.00	2.00	4.00	25
24 X 24	24.00	24.00	22.75	22.75	2.00	5.00	2.00	5.00	25



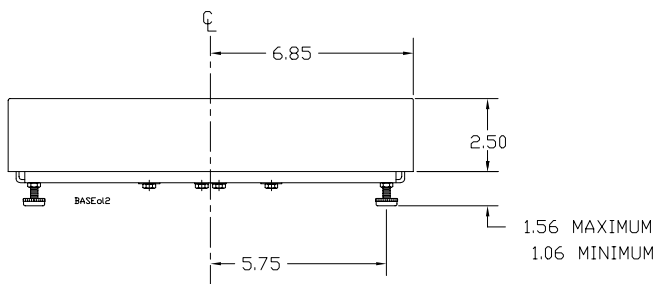
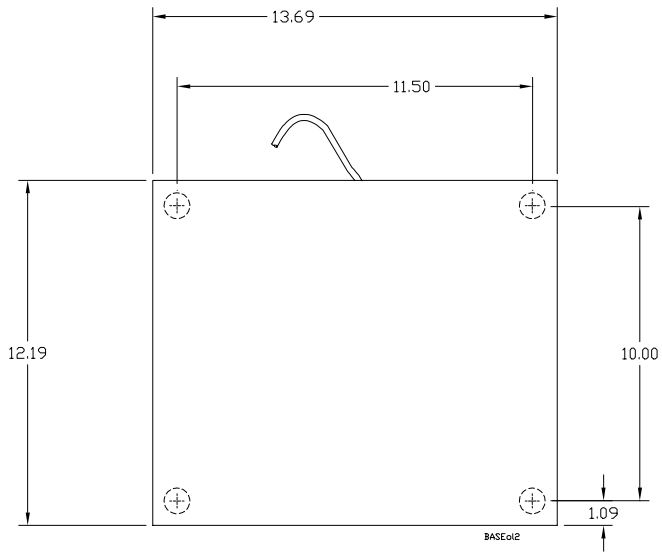
Torsion Base Outline Dimension Drawing



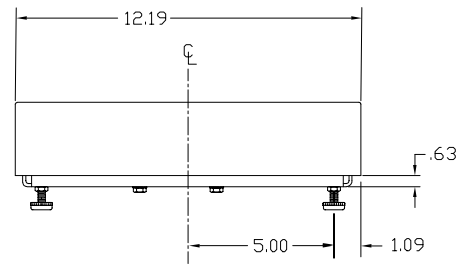
TORSION BASE, 9" x 9"
(FRONT VIEW)



TORSION BASE, 9" x 9"
(SIDE VIEW)

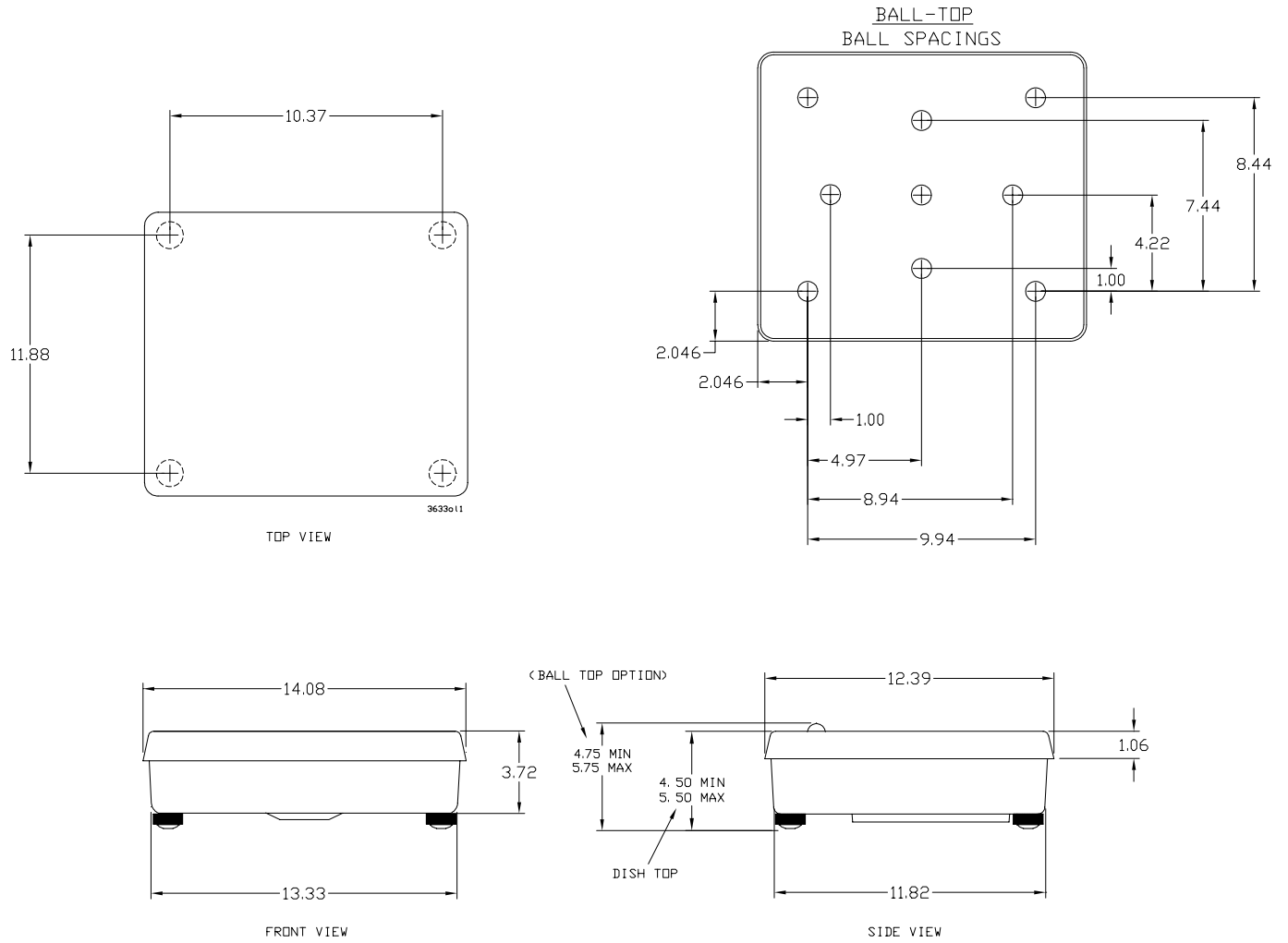


TORSION BASE, 12" x 14"
(FRONT VIEW)

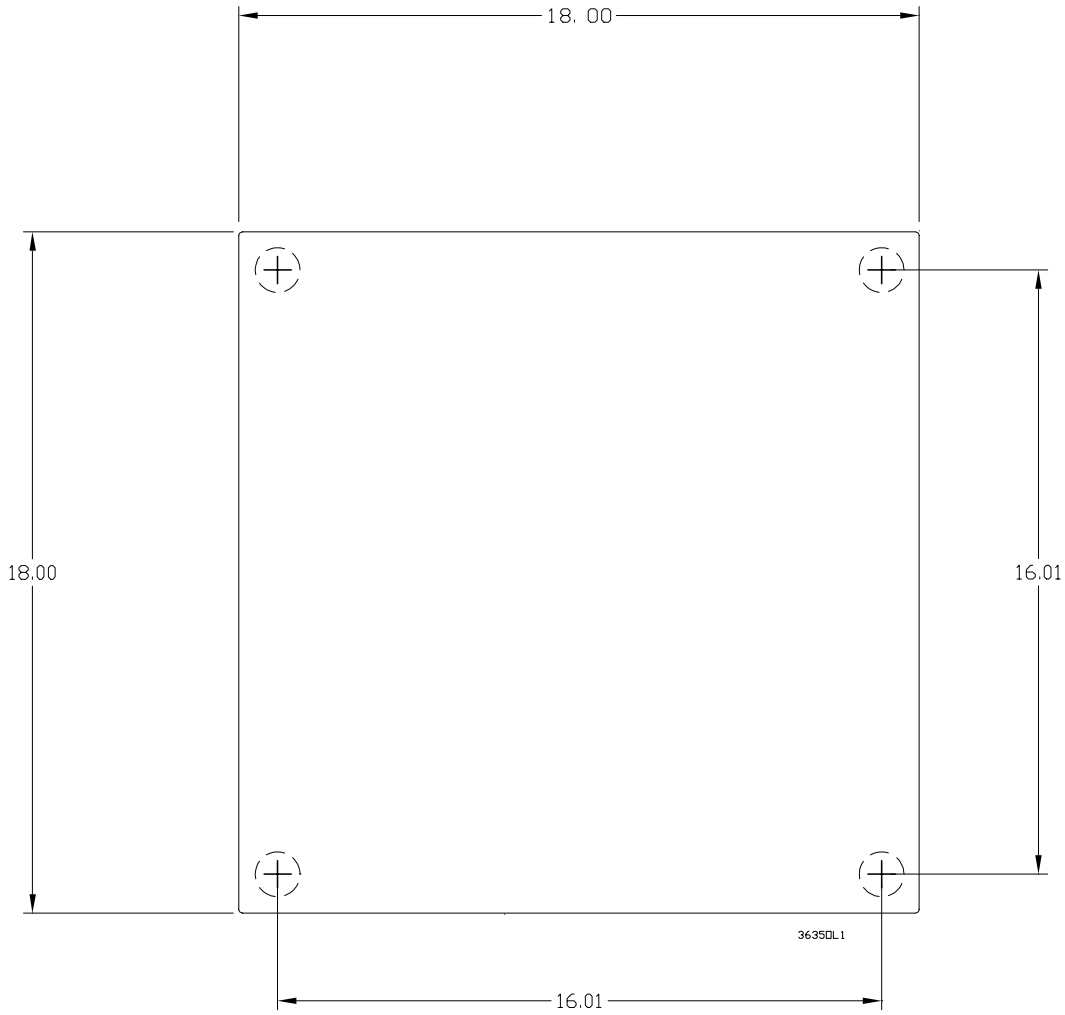


TORSION BASE, 12" x 14"
(SIDE VIEW)

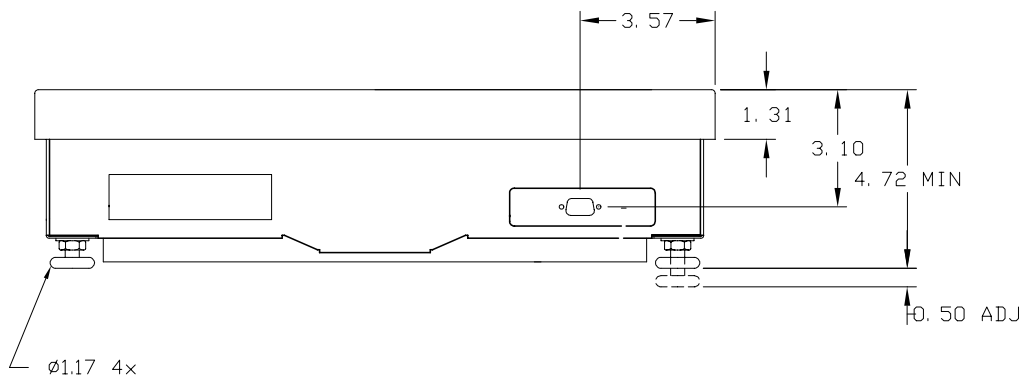
3633T QDT Series Outline Dimension Drawing



3635 QDT and 3735 Outline Dimension Drawing



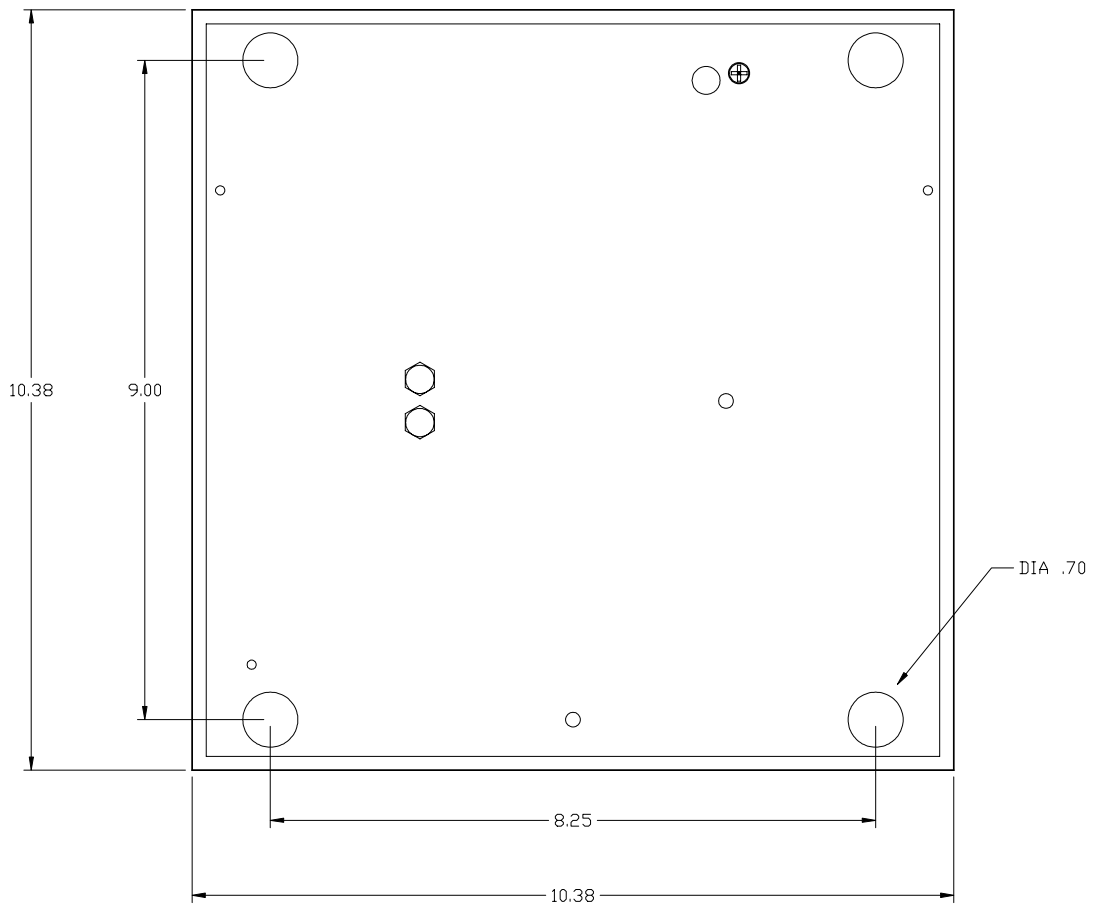
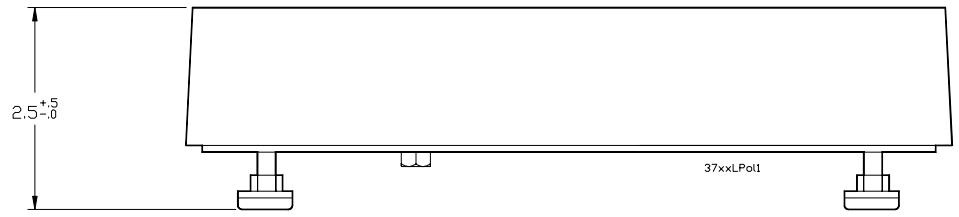
TOP VIEW



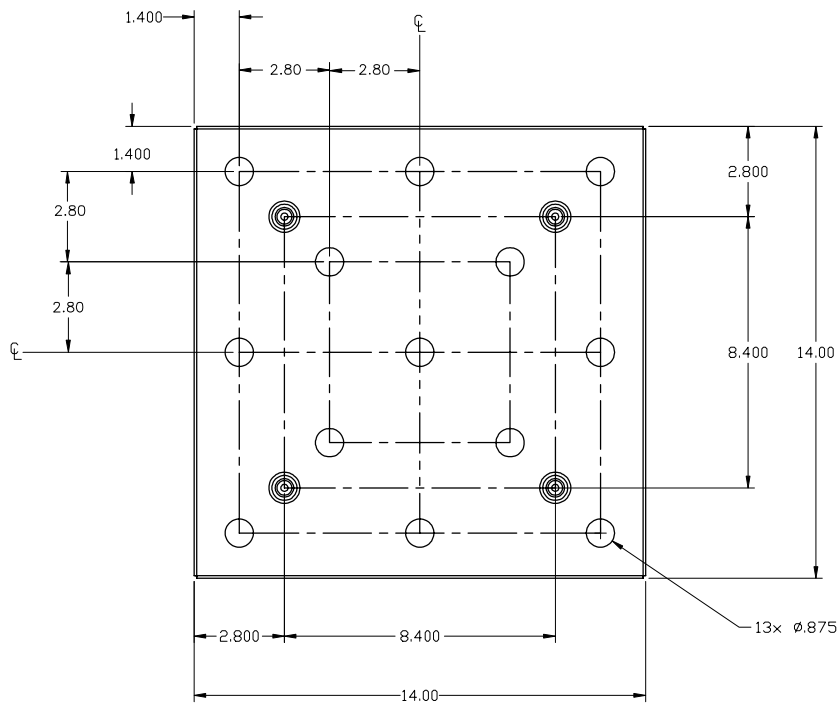
REAR VIEW

This page left intentionally blank.

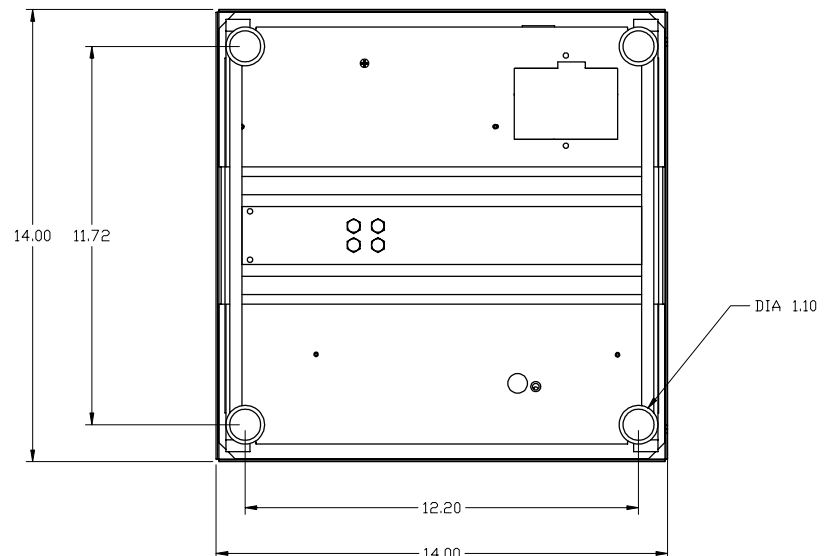
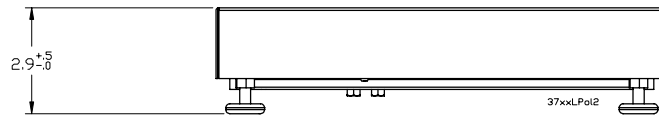
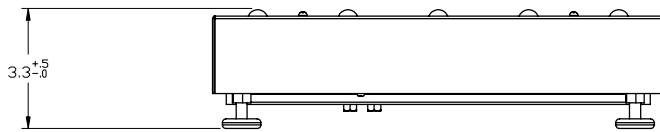
37xxLP Series Bases Dimensional Outline Drawings



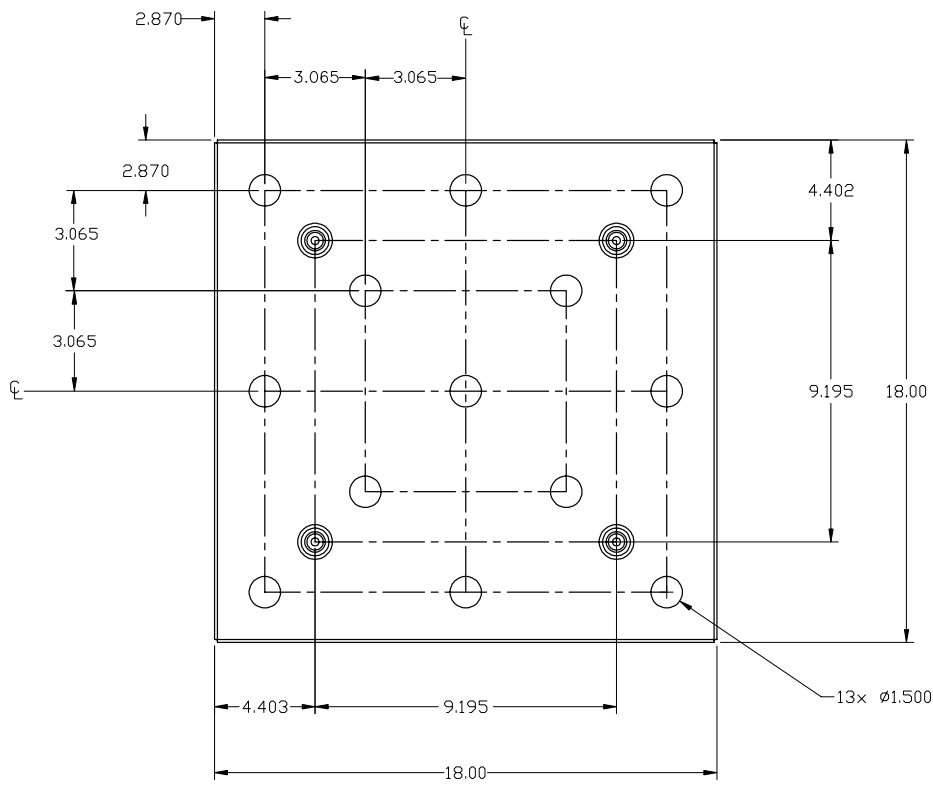
3731LP 10" x 10" BENCH BASE



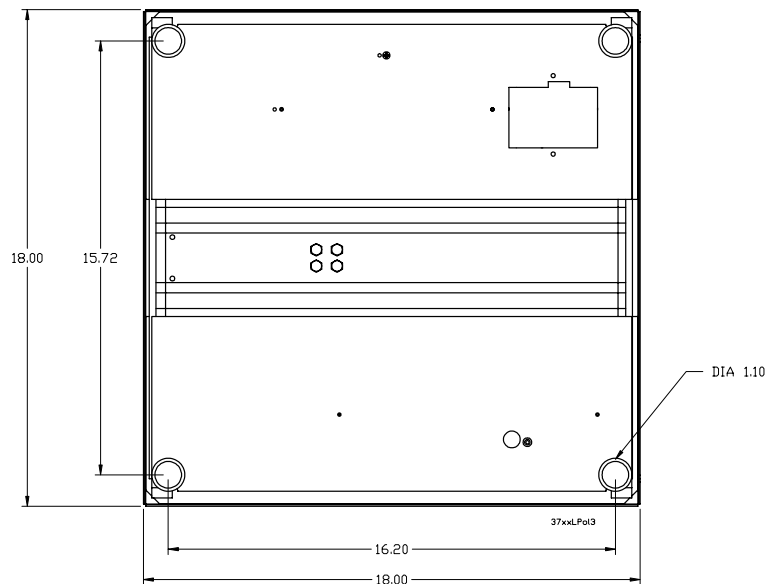
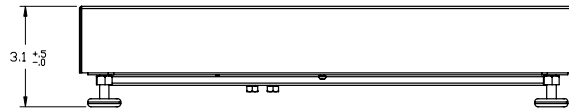
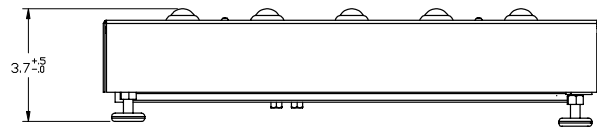
BALL TOP VERSION



3733LP 14" x 14" BENCH BASE



BALL TOP VERSION



3735LP 18" x 18" BENCH BASE

This page left intentionally blank.

Avery Weigh-Tronix



Avery Weigh-Tronix USA

1000 Armstrong Dr.
Fairmont, MN 56031 USA
Telephone: 507-238-4461
Facsimile: 507-238-4195
e-mail: industrial@weigh-tronix.com
www.wtxweb.com

Avery Weigh-Tronix UK

Foundry Lane
Smethwick, West Midlands
England B66 2LP
Tel: +44 870 90 34343
Fax: +44 121 224 8183
Email: info@awtxglobal.com
Web site: www.averyweigh-tronix.com

Avery Weigh-Tronix Canada, ULC

217 Brunswick Boulevard
Pointe Claire, QC H9R 4R7 Canada
Telephone: 514-695-0380
Toll free: 800-561-9461
Facsimile: 514-695-6820
www.weigh-tronix.ca