

MANUAL OF THE MACHINE

MODEL 2800

This book is provided to help you to easily understand the overall structure of the machine and operate it without much technical training. It also contains valuable tips on minor trouble-shooting.

In order for you to make best use of your new unit, you are recommended to read carefully through this book.

CONTENTS

● SPECIFICATIONS _____	2
● SAFETY INSTRUCTIONS _____	3
● MACHINE STRUCTURE _____	4
● HOW TO LOAD STRAP _____	5
● OPERATION _____	6
○ OPERATION PANEL	
○ BATTERY'S CHARGE	
● HOW TO ADJUST STRAP AMOUNT IN POOL BOX _____	7
● OPERATIVE INSTRUCTIONS _____	8
● INTERNAL ADJUSTS AND CONTROLS _____	9
○ THERMICAL MOTOR BREAKER	
○ HEATER TEMPERATURE SELECTOR	
○ BELT ADJUST	
○ LIMIT SWITCH	
● DIAGRAMS _____	12
● SCHEMES _____	13
● GUIDE TIPS ON TROUBLE-SHOOTING _____	14
● MACHINE GROUPS _____	15

SPECIFICATIONS

NOTE: Machine specifications may vary according to costumers order.
The followings are for the standard type.

MACHINE DIMENSIONS

1170 mm. WIDTH

915 mm. DEPTH

2600 mm. HEIGHT

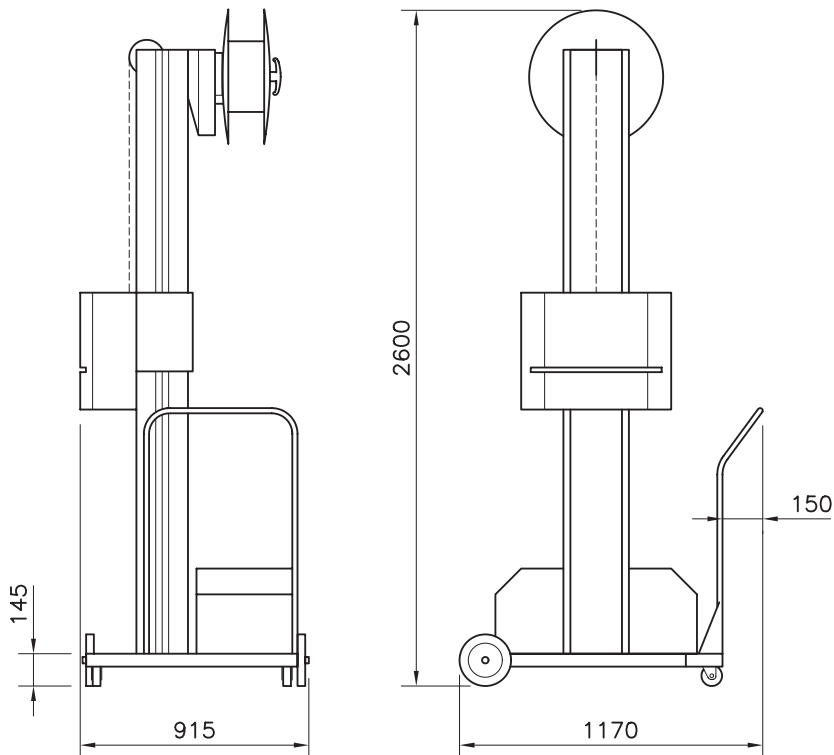
MACHINE WEIGHT: 350 Kg.

STRAP WIDTH: 6-16 mm.
(Strap width have to be adjusted in factory)

STRAPPING SPEED: 2 Sec. / cycle

VOLTAGE REQUIREMENTS: 220 V / 240 V 50 / 60 Hz. Single phase

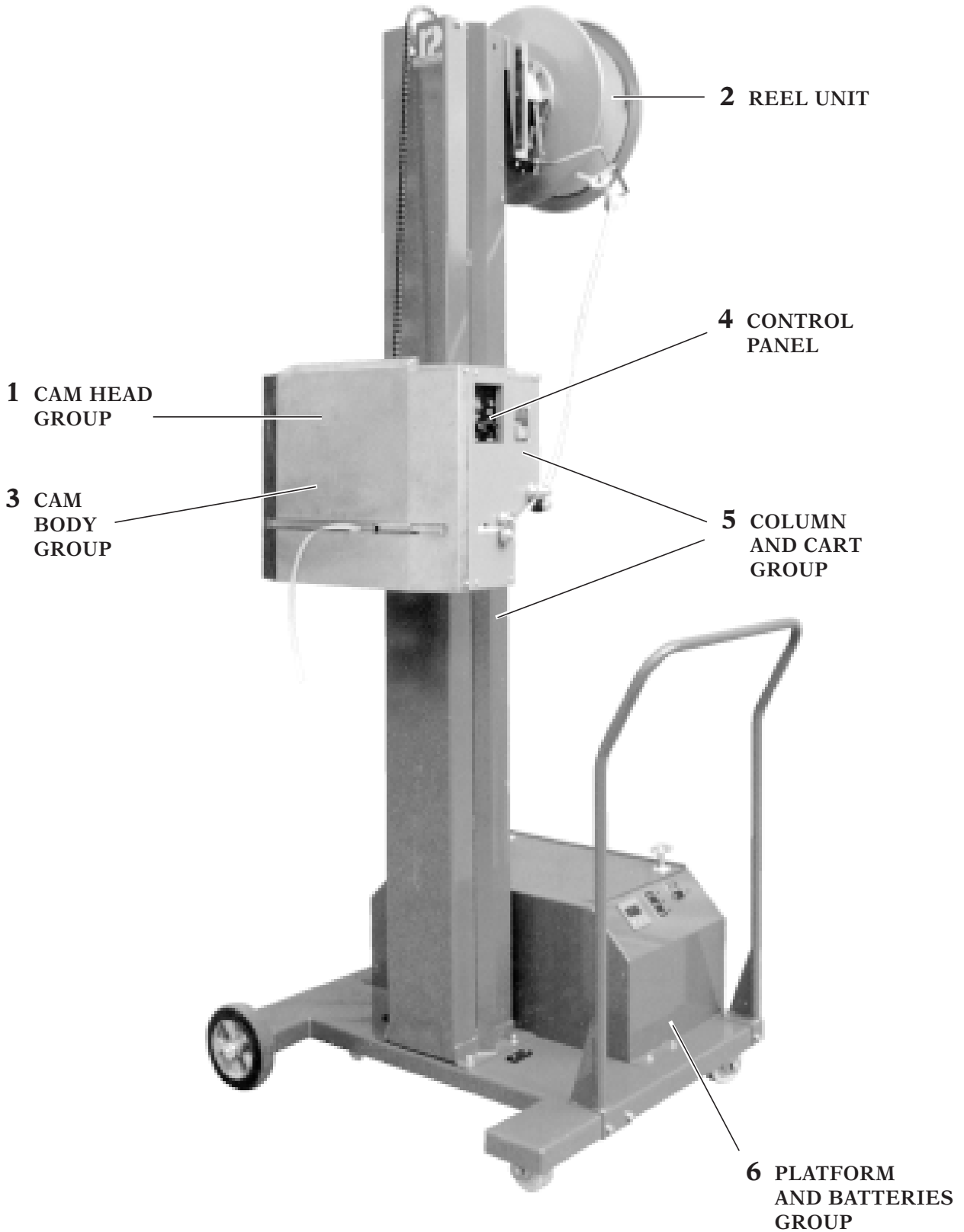
POWER CONSUMPTION: 1 Kw.



SAFETY INSTRUCTIONS

- Read all service manual before start to operating the equipment.
- Read the converter and charging adjuncted manuals.
- Always disconnect the strap cam head from the battery's group if you have to adjustment or manipulate it. Failure to do so may cause personal injury.
- Always keep the converter before any manipulation with the batteries group.
- Do not rise on the machine under any concept.
- Do not park or work with the machine in slopping floor if it is biggest that 2 degrees.
- Do not work with the machine if the battery's charging is turned on.
- Keep adequate working space around the machine at any time.
- Do not attempt to alter the machine design.

MACHINE STRUCTURE



SET UP INSTRUCTIONS

The machine is packed in two pallets:

- The one contains the Platform and the Reel Unit.
- The other contains the Column and the Cam Head group.

The instructions for its set up:

1. Take out the Platform group from the pack.
2. Set up the Handle on the Platform (Fig. 1).
3. Set up the Pinion Chain in the Column group (Fig. 2).
4. Set up the Column in the Platform group (Fig. 3).
5. Set up the Reel group in the Column (Fig. 4).

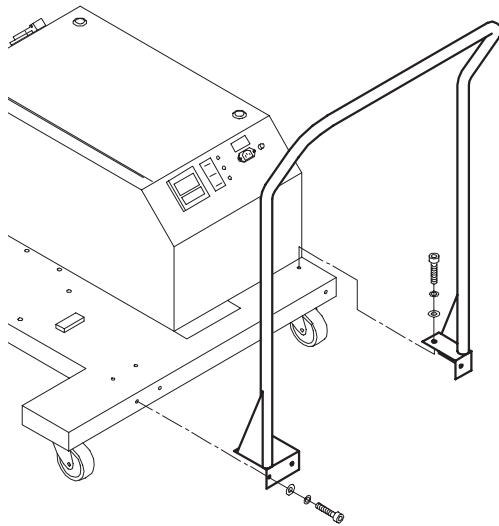


Fig. 1

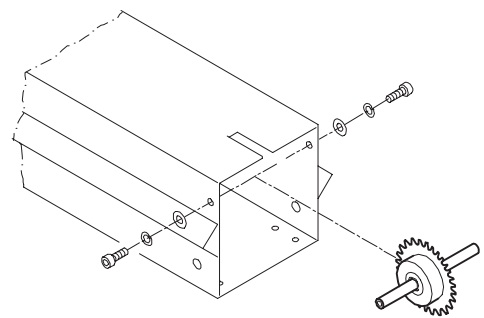


Fig. 2

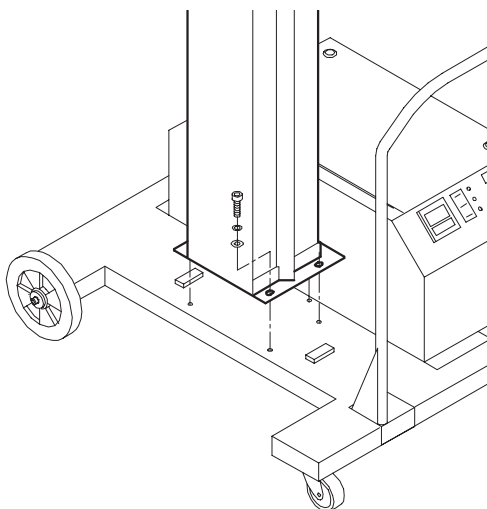


Fig. 3

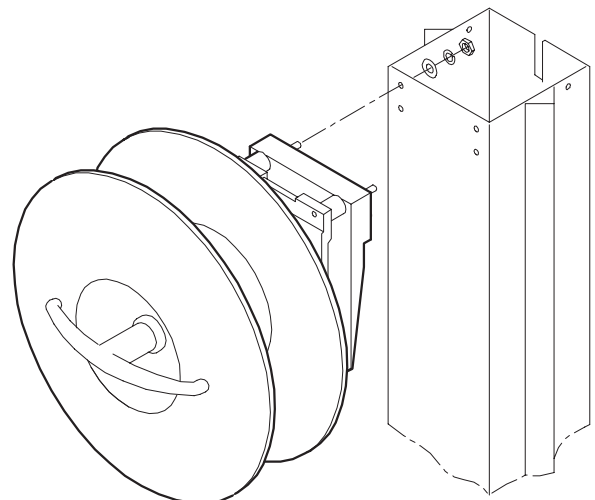
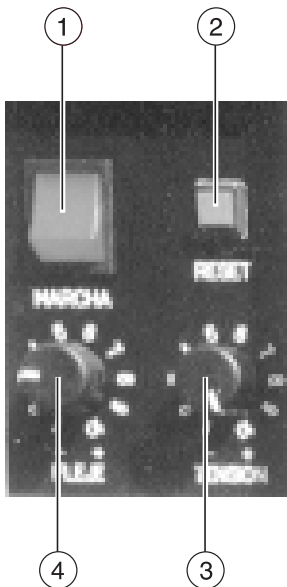


Fig. 4

OPERATION

OPERATION PANEL



① START SWITCH:

When the machine works the lamp lights and it can start the operation. The cam head motor and the heater are working. The motor will stop by itself in 25 seconds if no body use it because so it will reserve the energy.

② THE CAM HEAD SWITCH:

When it is pushed, the control unit returns to the original position. Use it when the cam head way suffers some problem.

③ ELECTRICAL SELECTOR:

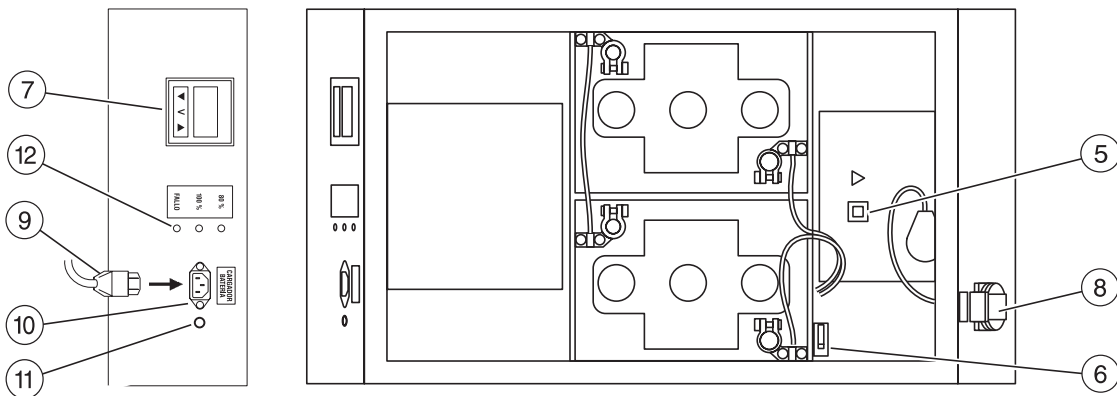
The strap tension can be modified turning the switch to the position 1 “-” or 10 “+”.

④ THE STRAP EXIT SELECTOR:

The longitude of the strap is determined by the timer that has a scale from 1 to 10.

⑤ START SWITCH:

The converter doesn't work if the switch is on the “OFF” position. Put the number ⑤ switch on the “REMOTE” position. When the Batteries Group will be close it will start by the micro ⑥, it will activate the voltage adjusting dial ⑦ in the frontal panel and the machine will be connected at 220 V tension by the power that arrives to the external connector ⑧ on the body.



THE BATTERIES CHARGING

The batteries group cover has to be open during the recharging process because it needs ventilation.

Connect the plug ⑨ in the base ⑩ (Batteries Charging) and the other cable extreme to the net. The feed works with 220 - 240 V. When it is connected the lamp light ⑪ and the charging lamps ⑫ start to light on and off during 15 seconds for start the charging process. The batteries will be charged when the lamp will show the 100 %.

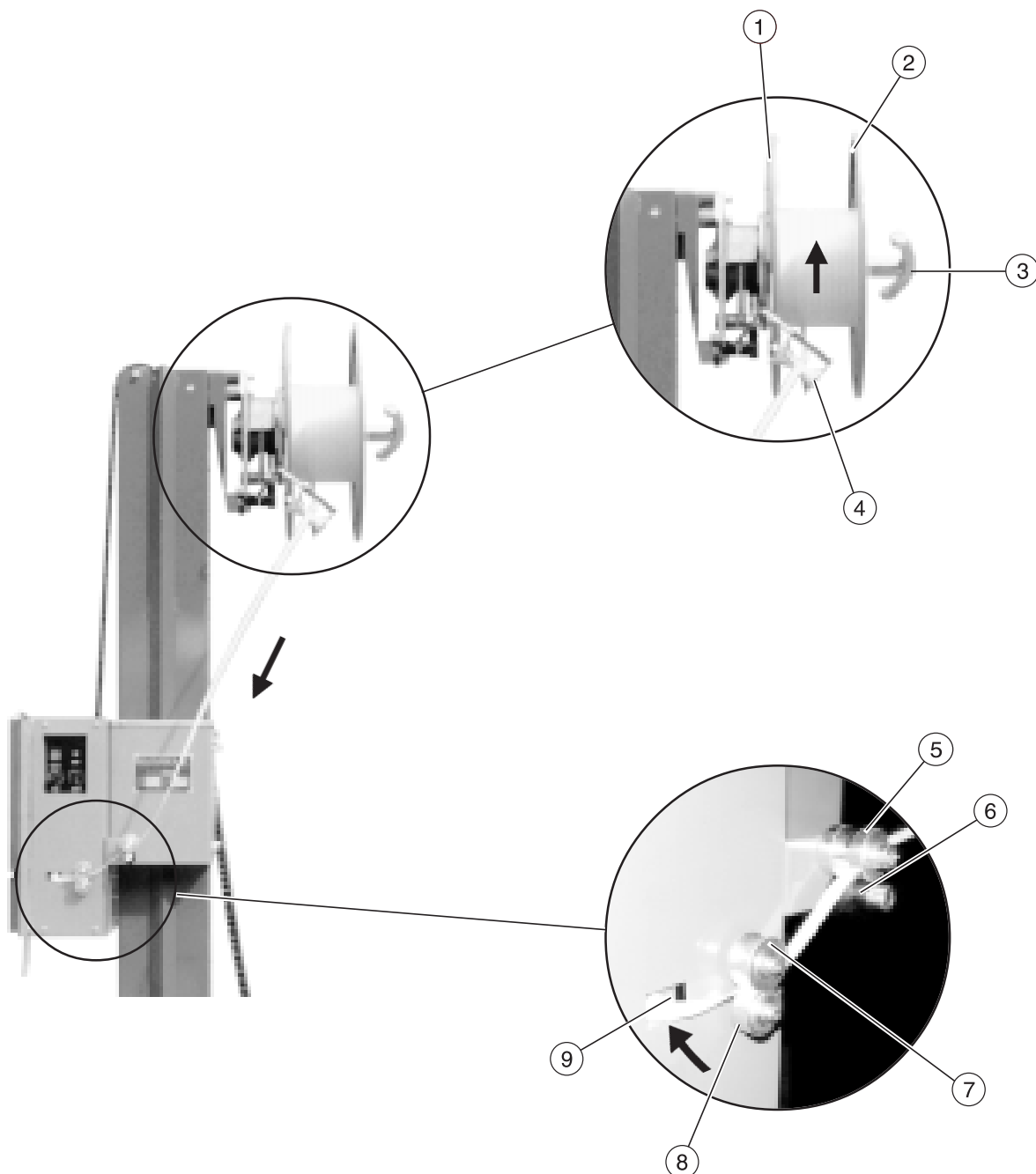
To preserve the batteries we recommend recharge them when the voltage panel show ⑨ between 11 and 11,5 V.

Read all manual's charging and batteries before works with them.

HOW TO ADJUST THE STRAP

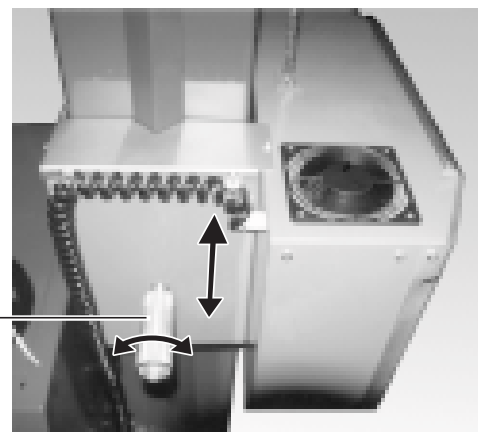
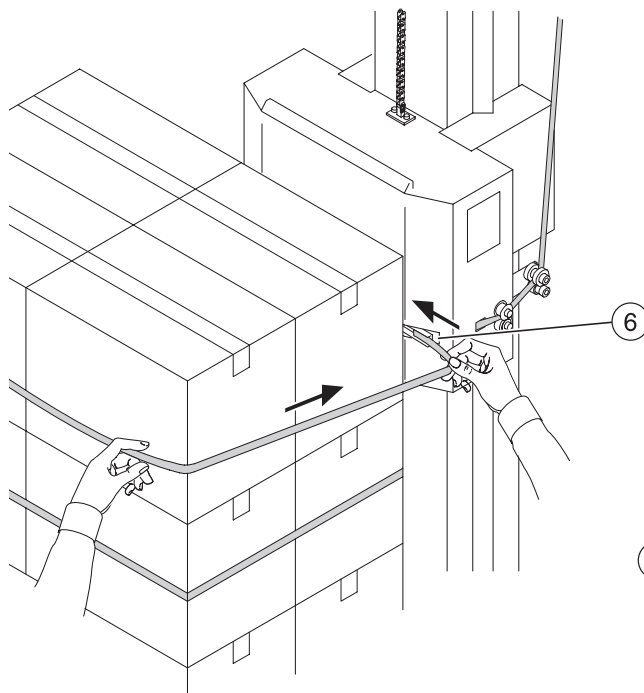
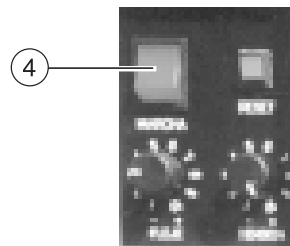
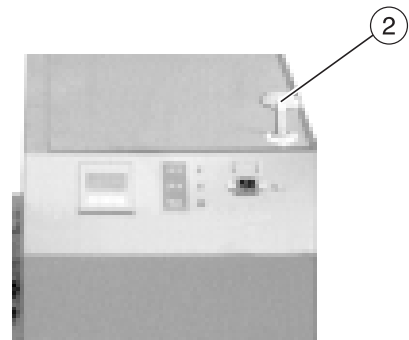
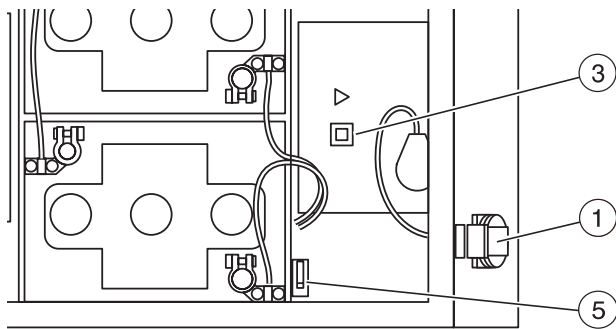
To adjust the strap operate light follow:

1. Place the strap coil with the adhesive strings into the reel ① so the reel will turn in the arrow direction, then place the external plate ② near to the strap coil, press down with the forward switch ③ and cut the subject film.
2. Pass the finish of the strap between the guide reel ④, stretch out it and pass between the reels ⑤ / ⑥ and ⑦ / ⑧, and fold and pass between the lower reel ⑨ till come out of the machine.



OPERATIVE INSTRUCTIONS

1. The machine can operate with ordinary tension in 220 V or by autonomous batteries in the external position ①. For starts the autonomous group open the cover with the key “▲” ② turn on the convertor switch ③ in the “REMOTE” position, never at the “ON” position because it cancel the security micro function ⑤ in the Batteries group and, at the finish, close back the cover.
2. Turn the power supply switch on ④.
3. Wait 2 minutes before strapping because the heater has to be hot.
4. Approximate the machine to the pallet, take the strap end put it around the pallet and put it into the right guide ⑥ until the start cycle micro is activated by it self. The machine strain the strap and weld it, then the pallet will be freed automatically.
5. The strapping cam head is blockaded by the taken handle ⑦; if turn to left, it will be blockaded and you can move the cam head vertically, and you can put it at the strapping place. Turning to right the handle the reel will blockaded.



INTERNAL ADJUSTS AND CONTROLS

THERMICAL MOTOR BREAKER

It is incorporated into the internal motor. If it has an electrical surcharge or too high temperature, the thermal switch will turn off by itself and cut the electrical current that goes to the motor. Later it will turn back on when the temperature will be correct.

Fuses:

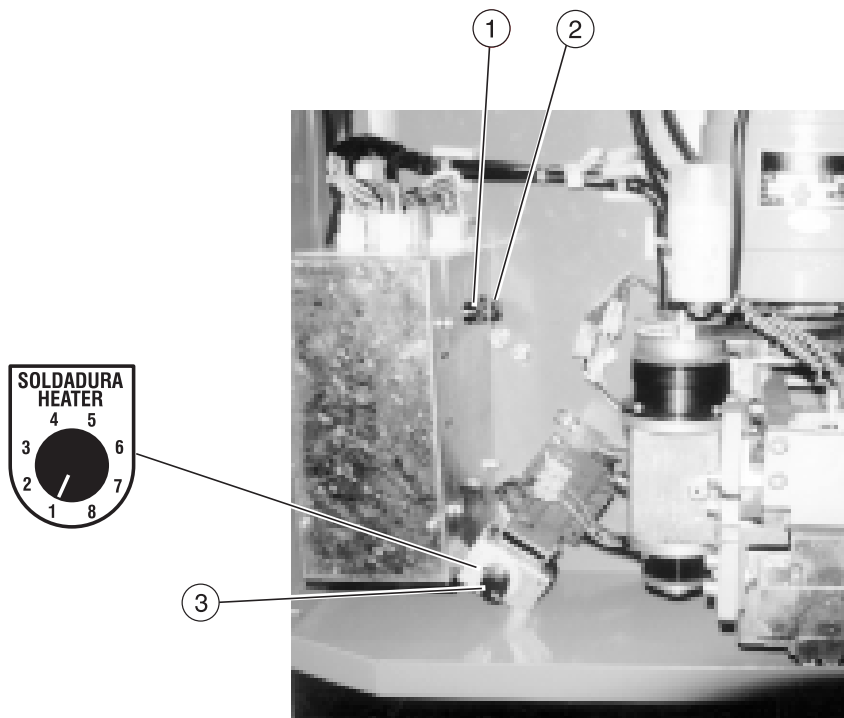
- ① General operative fuse: 10 Amp.
- ② Operative fuse of the integrate circuit: 2 Amp.

HEATER TEMPERATURE SELECTOR

This selector ③ checks the join heater temperature. This temperature depends on the strap thickness or the environment temperature.

The selector allow adjust the heater temperature when the environment is too cold or hot. Check the join quality and adjust the heater temperature adequately.

Turning to selector to the high worths, the heater voltage and temperature will increase.



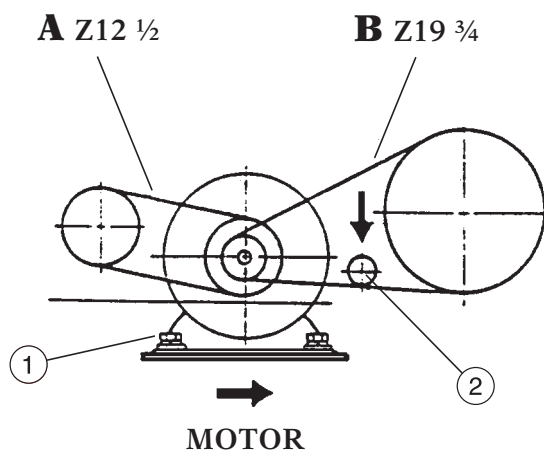
BELT ADJUST

A Belt

Slacken the 4 screws ①, move the motor to right to obtain the adequate tension and squeeze the screws.

B Belt

Slacken the tensioning fix nut ②, push down against the belt and squeeze another time the nut.



LIMIT SWITCH

Its place and functions are explained lower.

Initial limit switch cycle LS1:

It's place under the slide table. This limit switch actives when the strap extreme that is inserted handly into the RH strap, touch the lever ① connected to the LS1. With it activation start the strap cycle.

Pick up limit switch LS2:

It's placed in the front angle, on the right side of the control unit.

This limit switch actives by the tension and inversion cam.

LS2 serve for stop the cam and start the strap pick up and tension.

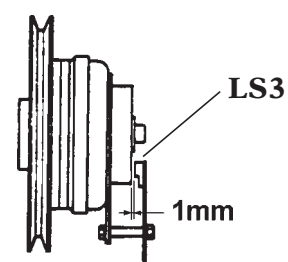
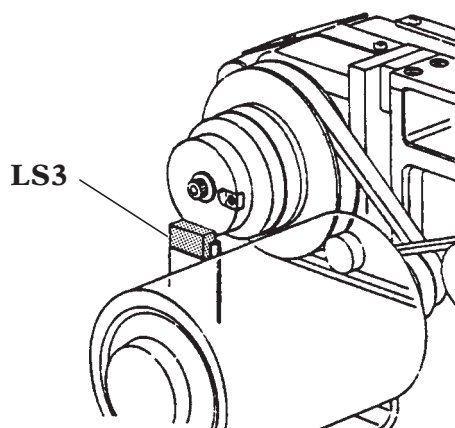
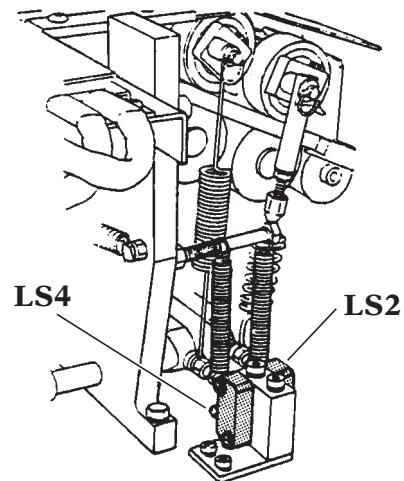
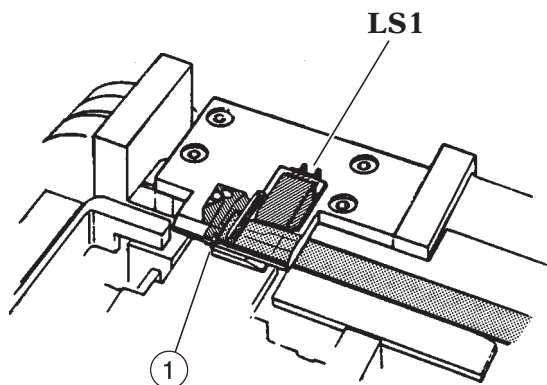
Tension stop limit switch LS3:

It's placed in the right extreme of the control unit aligned with the finish of the magnetic clutch alternating the operation with the clutch diminish speed. LS3 stop the strap reverse feed and connect back the control unit.

Launch or strap exit limit switch LS4:

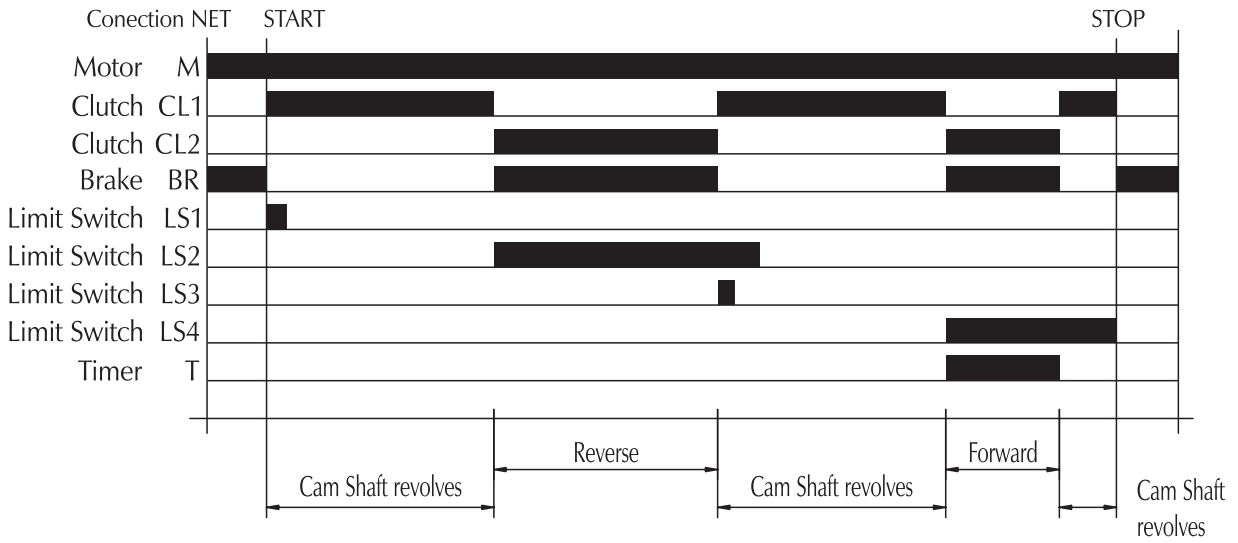
It's placed in the front angle of the right command of the control unit, just on the left side of the LS2. This switch active by the launch cam.

LS4 allow desconnect the control unit and advance a predetermined strap length.

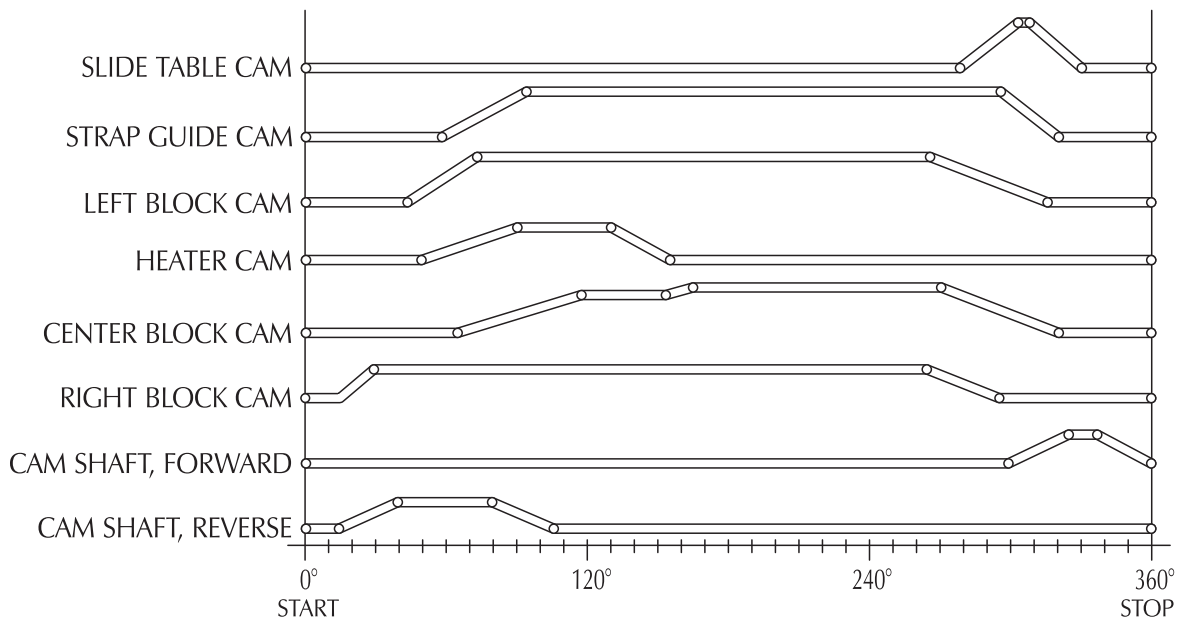


Vista final

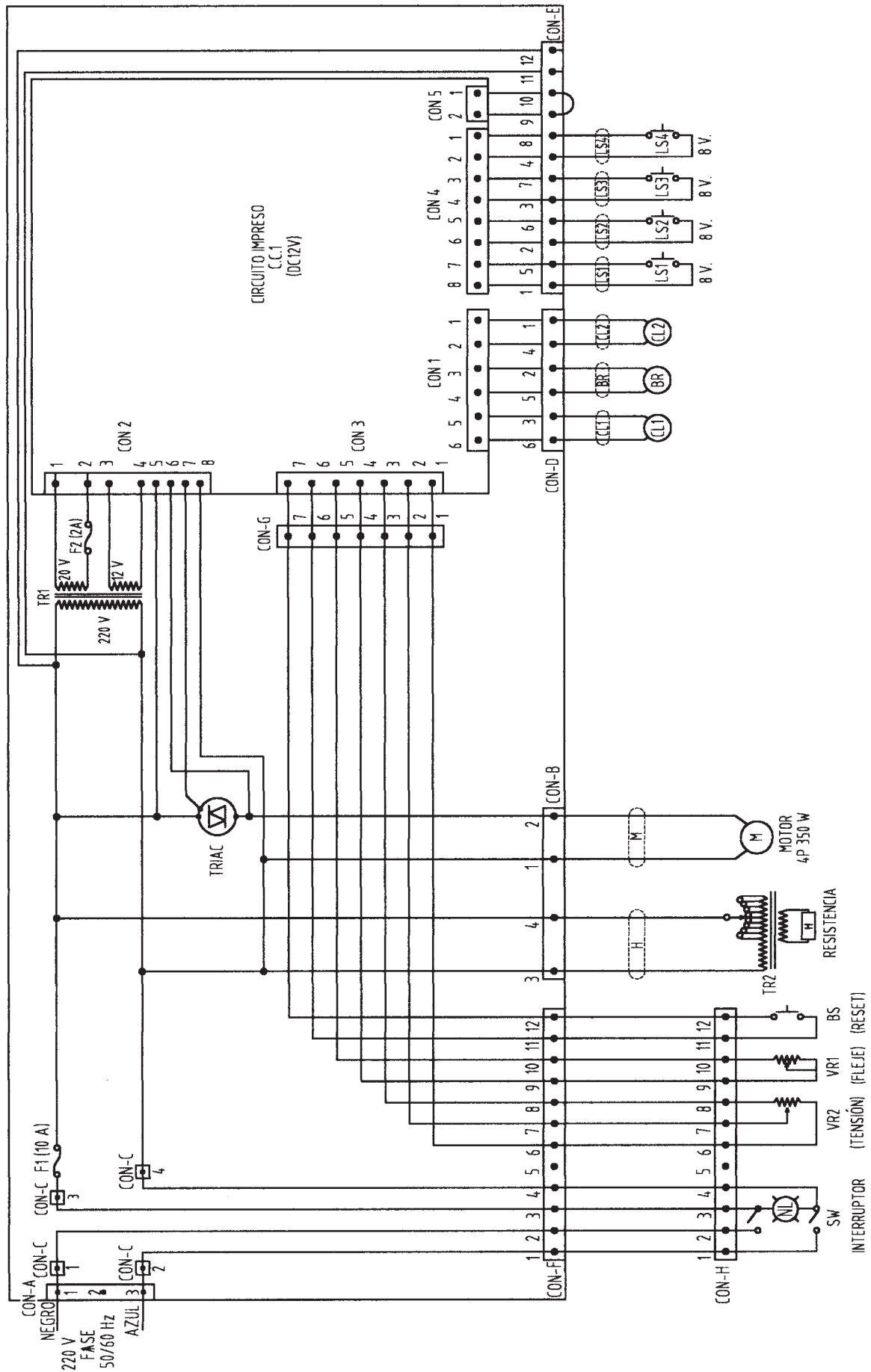
TIMES CYCLE DIAGRAM



ANGLE CAMS DIAGRAM



SCHEMATIC WIRING DIAGRAM



LITTLE TROUBLE-SHOOTING GUIDE

MOTOR DOES NOT WORK

Problem	Cause	Action
Pilot lamp is not on	Poor contact within Power Supply Switch or at plug	Repair or replace switch or plug
	Electricity does not flow to the outlet	Check electric power supply
	Break in the power cord	Repair or replace power cord
Pilot lamp is on	Fuse (F1) is burned out	Replace F1 (10 AMP)
	Motor breaker has popped up	Wait the motor will start by itself
	Energy conserving circuit is in operation	Insert strap into HR strap guide

MOTOR WORKS

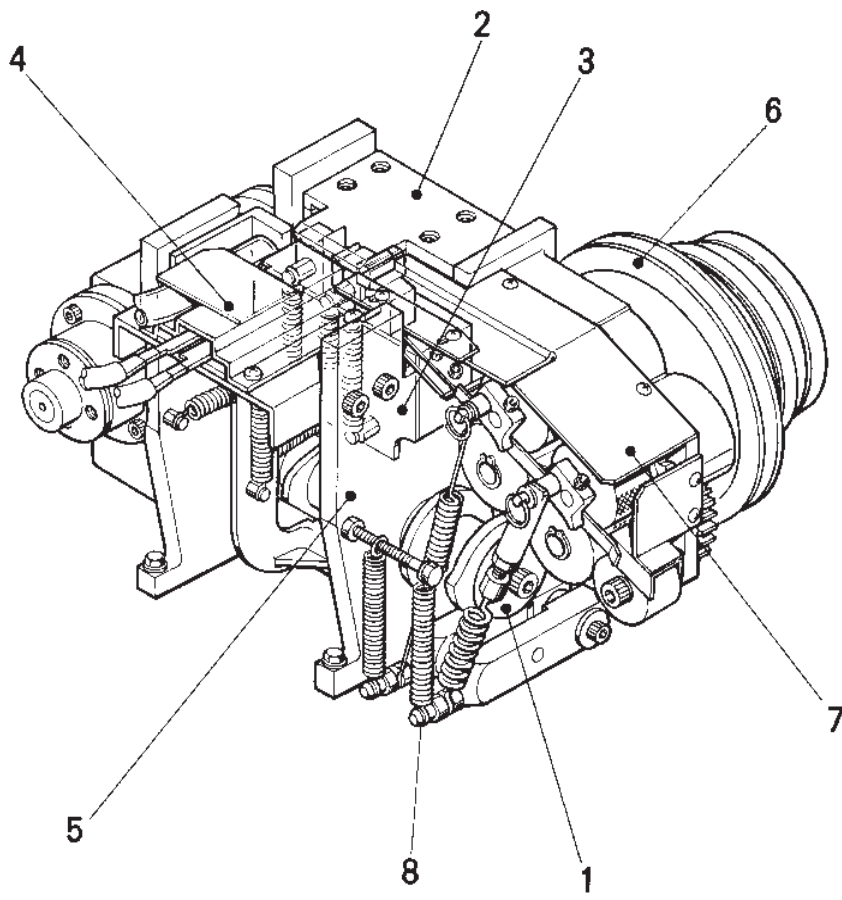
Problem	Cause	Action
Starting is faulty	Fuse (F2) is burned out	Replace with another one of identical amp (2 AMP)
	Faulty operation of Striker	Clean Striker. Adjust Striker Bracket Pin
	Limit switch (LS1) defective	Replace LS1
Reversing is faulty	Excessive separation with magnet (LS3)	Adjust
	Limit switch (LS3) defective	Replace LS3
	V-Belt Slipping. Pulley or gear Loose	Adjust V-Belt. Tighten pulley or gear set screw
Feeding is faulty	Limit switch (LS4) defective	Replace LS4
	V-Belt Slipping. Pulley or gear Loose	Adjust V-Belt. Tighten pulley or gear set screw
	Defective strap power dial	Replace
	Defective launch springy n° 1808	Replace
Tensioning is Faulty	Improper setting of Tension Dial	Adjust tension dial
	Insufficient pull of Reverse Roller Springy	Increase springy tension by adjusting Roll End
	Defective springy n° 1809	Replace
Sealing is faulty	Dust on or around Heater tongue	Clean heat sealing head
	Heater temperature too high or too low	Adjust Heater temperature
	Heater broken or Heater terminal loose	Replace damaged Heater Reconnect Heater terminal
Reel revolution is faulty	Strap coil is backward on reel	Remove strap coil. Reinstall correctly
	Brake pad is worn out	Replace Brake Pad
	Loose or stretch brake springy	Graduate the springy AUTO-1128
	Brake springy disconnected / defective	Reattach or replace Brake Springy
The cam revolves in the incessantly	Pushing reset the cam stops. (LS2) is defective	Check the LS2 and replace is necessary
	Pushing reset the cam revolves. (LS4) is defective	Check the LS4 and replace is necessary

MACHINE GROUPS

PARTS LIST AND COMPONENTS

1	CAM HEAD GROUP	16
1-1A	CAM GROUP	18
1-1B	GEAR GROUP	20
1-2	SLIDE TABLE GROUP	22
1-3	PRESS GROUP	24
1-4	HEATER GROUP	26
1-5	RIGHT MAIN FRAME GROUP	28
1-6	TENSION GROUP	30
1-7A	FEED GROUP	32
1-7B	UPPER STRAP GUIDE.....	34
1-7C	LOWER STRAP GUIDE	36
1-8	LAUNCH AND REVERSE GROUP	38
2	REEL GROUP	40
3	CAM BODY GROUP	42
4-1	OPERATION PANEL GROUP.....	44
4-2	CONTROL GROUP	46
4-3	ELECTRIC GROUP.....	48
5	COLUMN AND REEL GROUP	50
6	PLATFORM AND BATTERIES GROUP	52

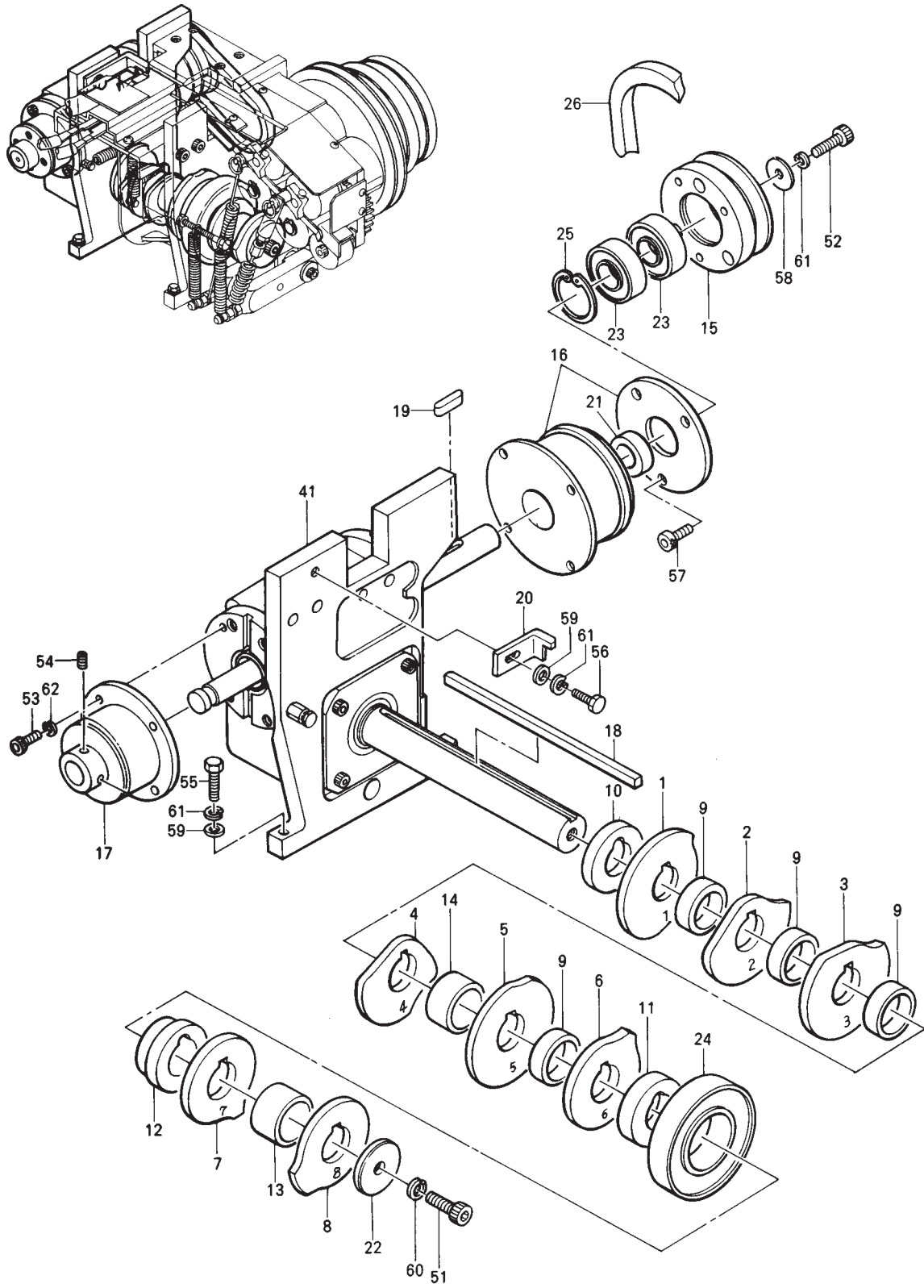
1 CAM HEAD GROUP



1 CAM HEAD GROUP

Nº	Reference	Description	Unit	Remarks
1		Cam group / Gear mission	1	see page 21
2		Slide table group	1	see page 23
3		Press group	1	see page 25
4		Join group	1	see page 27
5		Right control frame group	1	see page 29
6		Tension group	1	see page 31
7		Feed group	1	see page 33
8		Launch and reverse group	1	see page 39

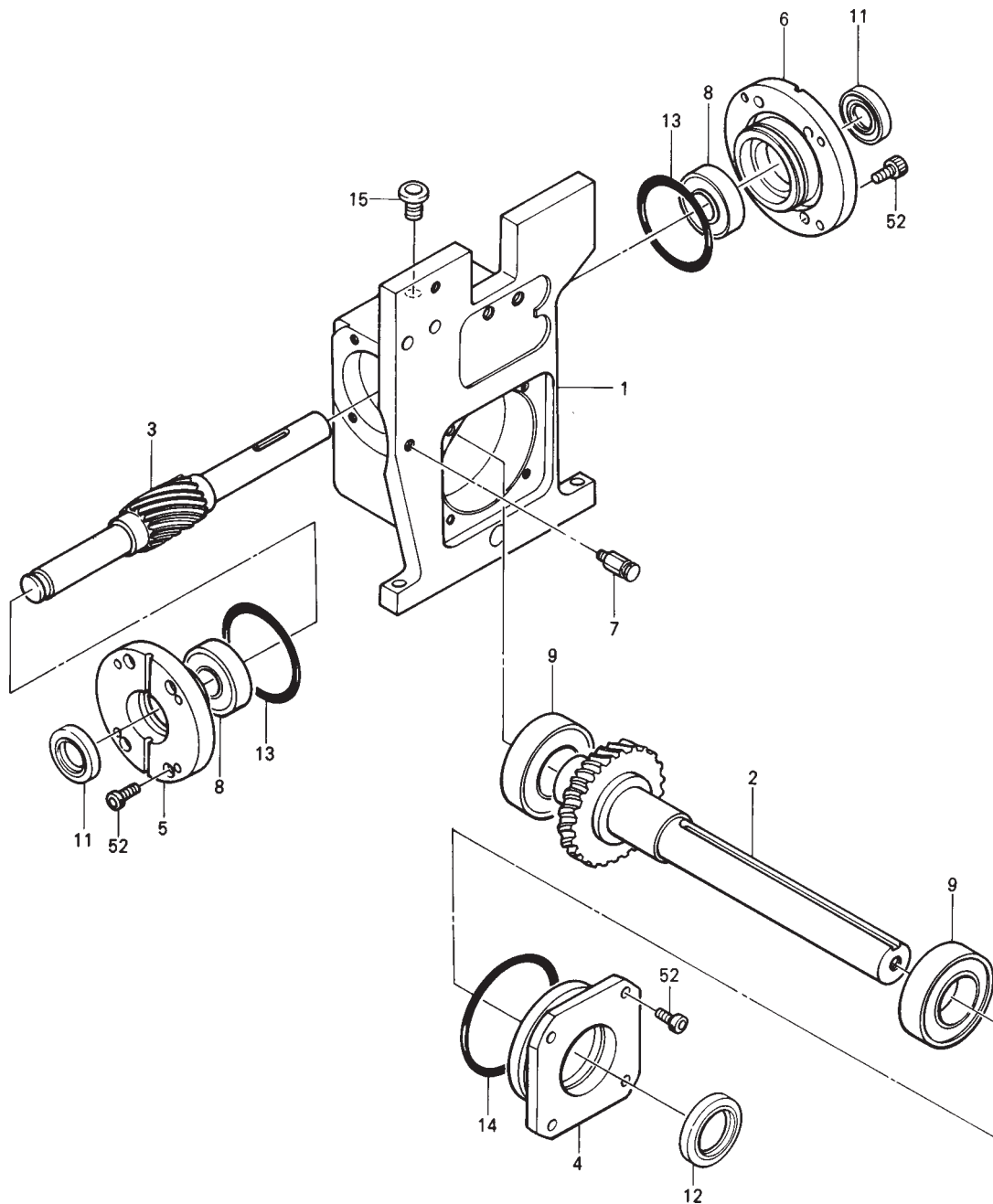
1-1A CAM GROUP



1-1A CAM GROUP

Nº	Reference	Description	Unit	Remarks
1	SEMI1101	Strap guide cam	1	
2	SEMI1102	Left block cam	1	
3	SEMI1103	Join cam	1	
4	SEMI1104	Center block cam	1	
5	SEMI1105	Right block cam	1	
6	SEMI1106	Slide table cam	1	
7	SEMI1107	Feed cam	1	
8	SEMI1108	Reverse tension cam	1	
9	SEMI1109	Collar 30 x 24,8 x 9,5	4	
10	SEMI1110	Collar 27 x 22,1 x 6,75	1	
11	SEMI1111	Collar 27 x 22,1 x 9	1	
12	SEMI1112	Collar 27 x 22 x 14,5	1	
13	SEMI1113	Collar 30 x 24,8 x 18,5	1	
14	SEMI1114	Collar 30 x 24,8 x 15,5	1	
15	SEMI1115	Pulley (gear box)	1	
16	SEMI1116	Magnetic clutch	1	
17	SEMI1117	Magnetic brake	1	
18	SEMI1118	Key 5 x 5 x 80,5	1	
19	SEMI1119	Key 5 x 5 x 22	1	
20	SEMI1120	Left strap guide	1	
21	SEMI1121	Clutch collar 20 x 15,2 x 6,75	1	
22	SEMI1122	Cam shaft end plate	1	
23	SEMI1123	Ball bearing	2	6002 2RS
24	SEMI1124	Ball bearing	1	6005 ZZ
25	SEMI1125	Stop ring H-32	1	
26	SEMI1126	B-Belt	1	Z 12 1/2"
41		Gear mission bracket	1	see 1-1B
51	SEMI1151	HBS, M8 x 20	1	
52	SEMI1152	HBS, M6 x 20	1	
53	SEMI1153	HBS, M4 x 10	8	
54	SEMI1154	HBS, M5 x 6	2	
55	SEMI1155	HB, M6 x 30	2	
56	SEMI1156	HB, M6 x 16	1	
57	SEMI1157	PMS, M4 x 8	3	
58	SEMI1158	PW, M6	1	
59	SEMI1159	PW, M6	3	
60	SEMI1160	SW, M8	1	
61	SEMI1161	SW, M6	4	
62	SEMI1162	SW, M4	8	

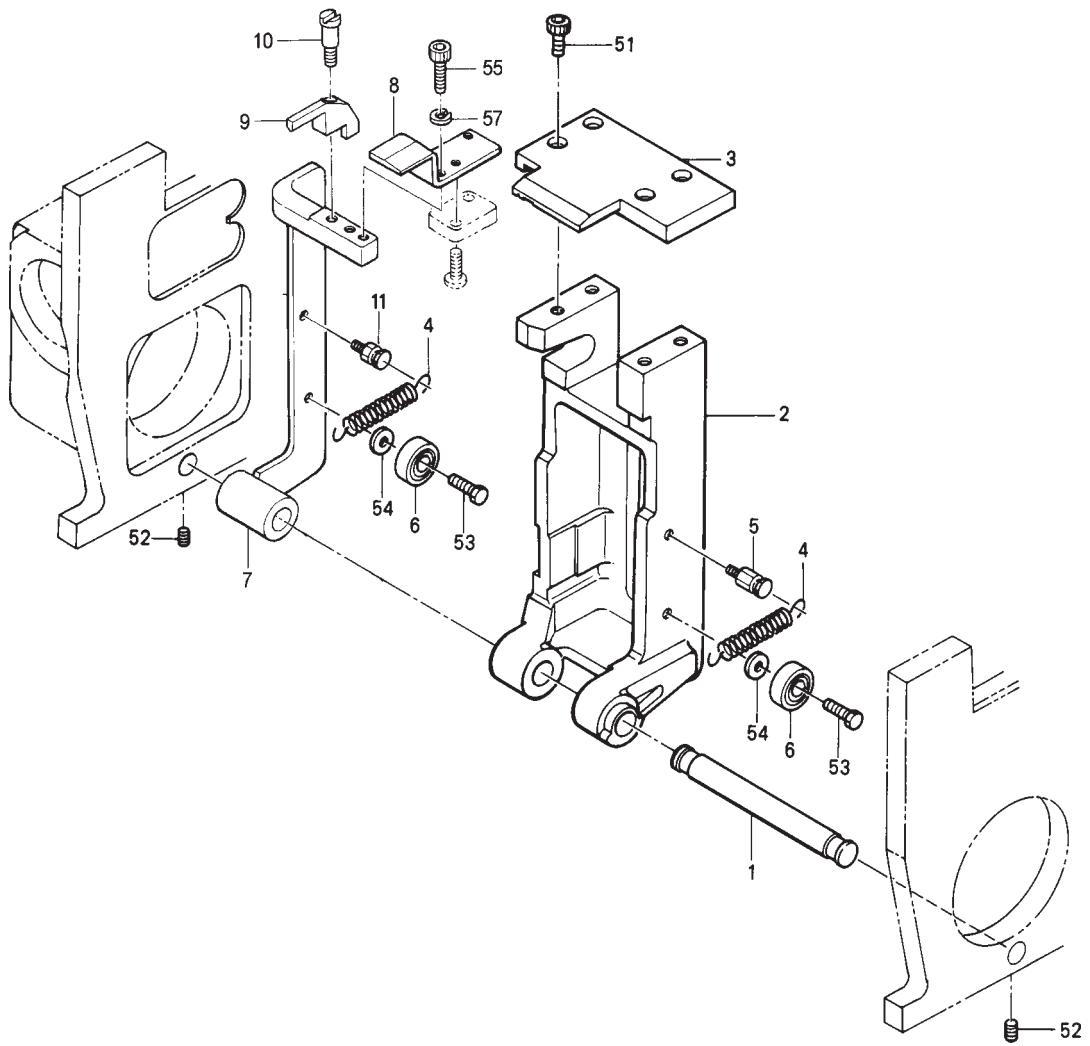
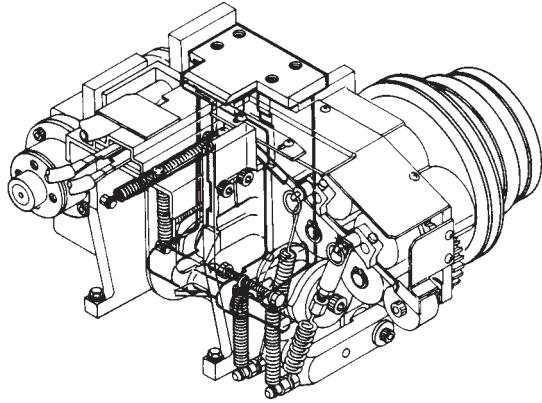
1-1B GEAR GROUP ASS'Y



1-1B GEAR GROUP ASS'Y

Nº	Reference	Description	Unit	Remarks
1	SEMI1127	Left Control frame	1	
2	SEMI1128	Worm wheel	1	
3	SEMI1129	Worm gear	1	
4	SEMI1130	Bearing case	1	
5	SEMI1131	Bearing case (Brake side)	1	
6	SEMI1132	Bearing case (Clutch side)	1	
7	SEMI1133	Heater guide springy hook	1	
8	SEMI1134	Ball bearing	2	6202 ZZ
9	SEMI1135	Ball bearing	2	6205
11	SEMI1136	Oil seal	2	
12	SEMI1137	Oil seal	1	
15	SEMI1140	Oil plug	1	
52	SEMI1163	HBS, M5 x 12	12	

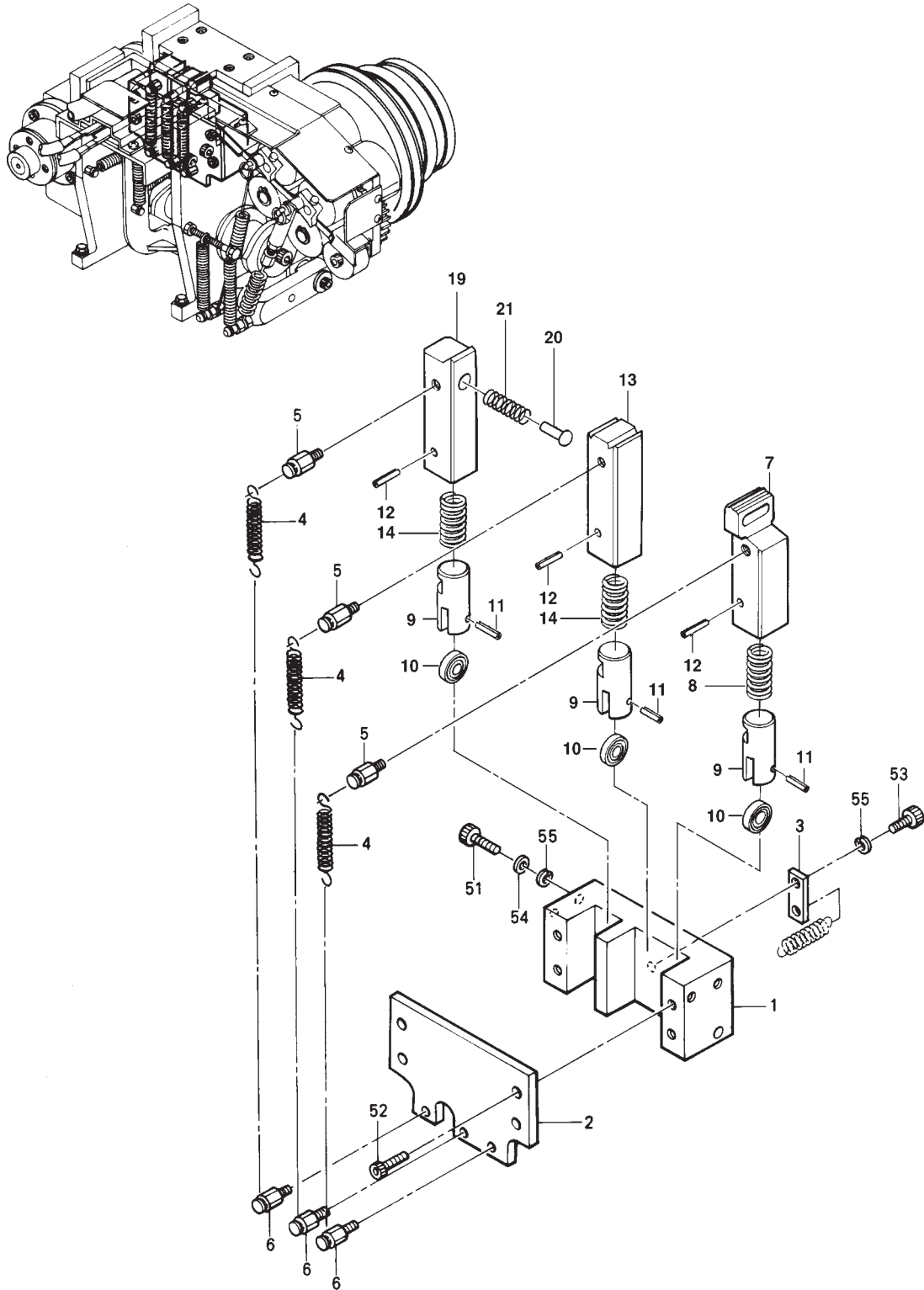
1-2 SLIDE TABLE GROUP



1-2 SLIDE TABLE GROUP

Nº	Reference	Description	Unit	Remarks
1	SEMI1201	Slide table shaft	1	
2	SEMI1202	Slide table	1	
3	SEMI1203	Slide table	1	
4	SEMI1204	Slide table springy	2	
5	SEMI1205	Springy hook	1	
6	SEMI1206	Ball bearing	2	626 ZZ
7	SEMI1207	Strap guide arm bracket	1	
8	SEMI1208	Strap guide	1	
9	SEMI1209	Striker	1	
10	SEMI1210	Striker pin	1	
11	SEMI1211	Springy hook	1	
51	SEMI1251	HBS, M6 x 15	4	
52	SEMI1252	HSS, M6 x 6	2	
53	SEMI1253	HB, M6 x 15	2	
54	SEMI1254	PW, M6	2	
55	SEMI1255	HBS, M4 x 12	2	
57	SEMI1257	SW, M4	2	

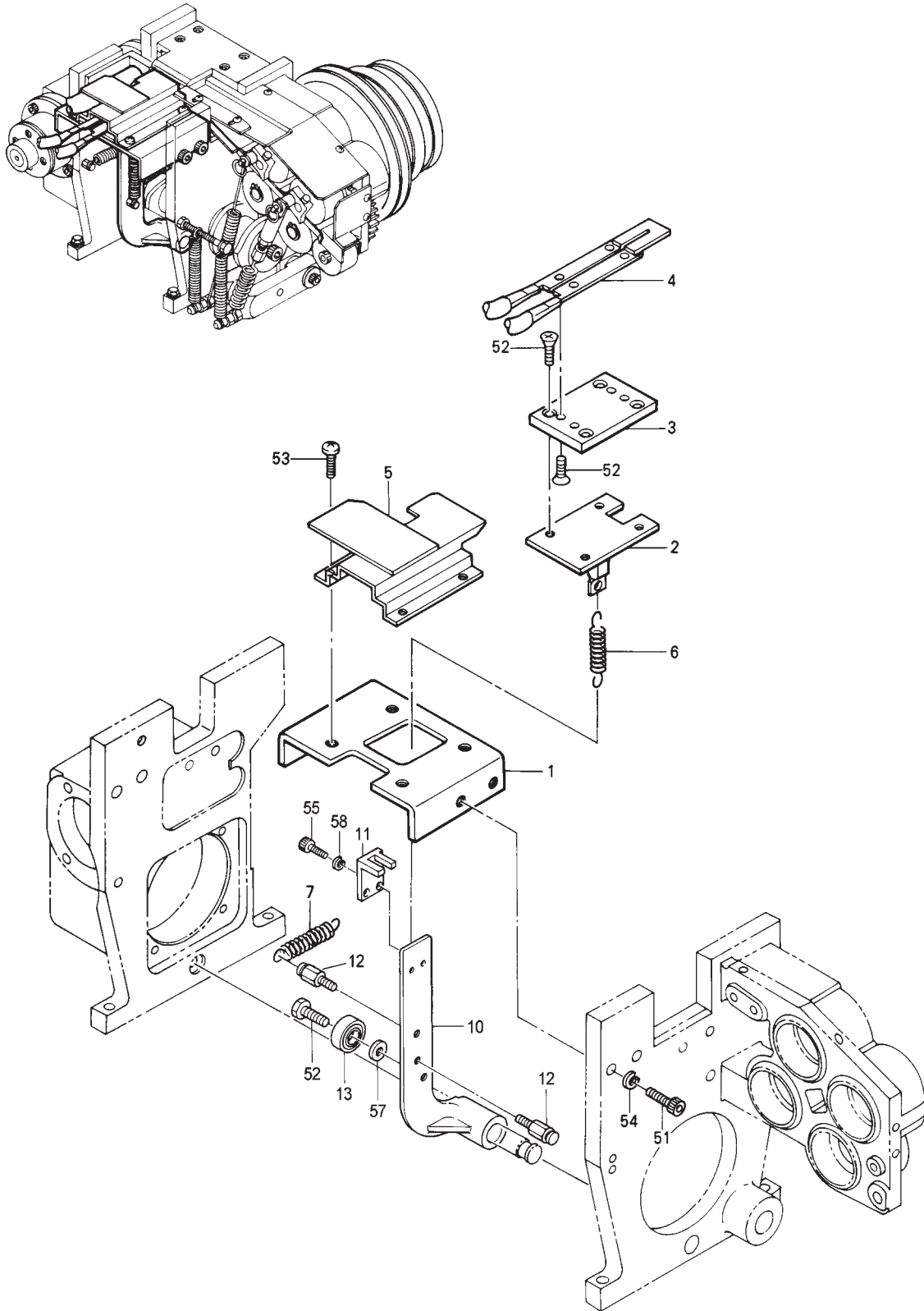
1-3 PRESS GROUP



1-3 PRESS GROUP

Nº	Reference	Description	Unit	Remarks
1	SEMI1301	Guide box	1	
2	SEMI1302	Front plate	1	
3	SEMI1303	Link plate springy	1	
4	SEMI1304	Block tension springy	3	
5	SEMI1305	Springy hook	3	
6	SEMI1306	Springy hook	3	
7	SEMI1307	Right block bracket	1	
8	SEMI1308	Block springy	1	
9	SEMI1309	Followe shaft	3	
10	SEMI1310	Ball bearing	3	635 ZZ
11	SEMI1311	Springy pin	3	
12	SEMI1312	Springy pin	3	
13	SEMI1313	Center block	1	
14	SEMI1314	Block springy	2	
19	SEMI1319	Left block	1	
20	SEMI1320	Pushing shaft	1	
21	SEMI1321	Pushing shaft springy	1	
51	SEMI1351	HBS, M6 x 25	5	
52	SEMI1352	HBS, M6 x 20	4	
53	SEMI1353	HBS, M6 x 10	1	
54	SEMI1354	PW, M6	5	
55	SEMI1355	SW, M6	6	

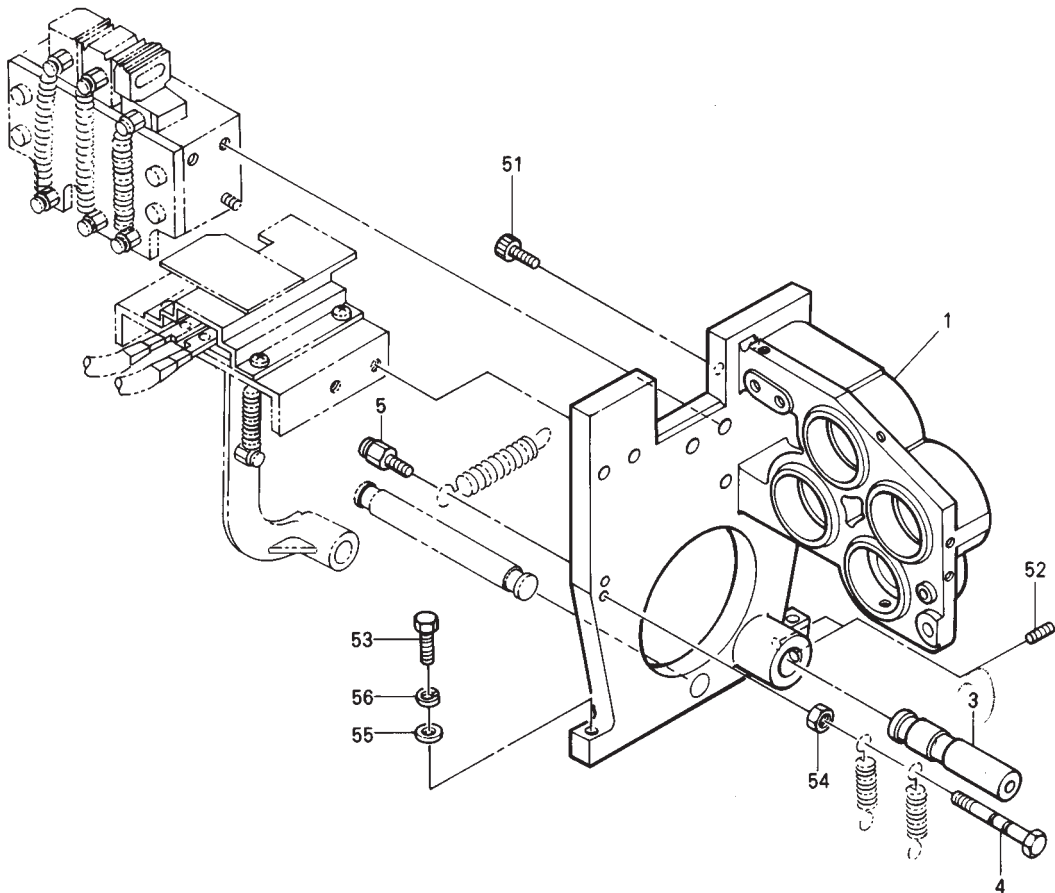
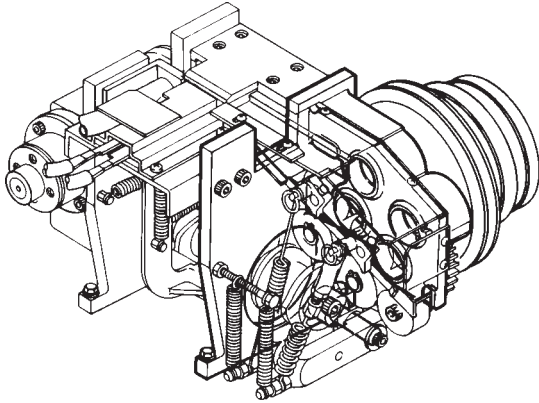
1-4 HEATER GROUP



1-4 HEATER GROUP

Nº	Reference	Description	Unit	Remarks
1	281401	Heater slide base	1	
2	SEMI1402	Heater base	1	
3	SEMI1403	Asbestos pad	1	
4	281404	Heater	1	
5	SEMI1405	Heater cover	1	
6	SEMI1406	Heater tension springy	1	
7	SEMI1407	Heater crank springy	1	
10	SEMI1410	Heater arm	1	
11	SEMI1411	Heater guide	1	
12	SEMI1412	Springy hook	2	
13	SEMI1413	Ball bearing	1	626 ZZ
51	SEMI1451	HBS, M6 x 20	4	
52	SEMI1452	FMS, M4 x 8	8	
53	SEMI1453	TMS, M4 x 8	4	
54	SEMI1454	SW, M6	4	
55	SEMI1455	HBS, M5 x 12	2	
56	SEMI1456	HB, M6 x 15	1	
57	SEMI1457	PW, M6	1	
58	SEMI1458	SW, M5	2	

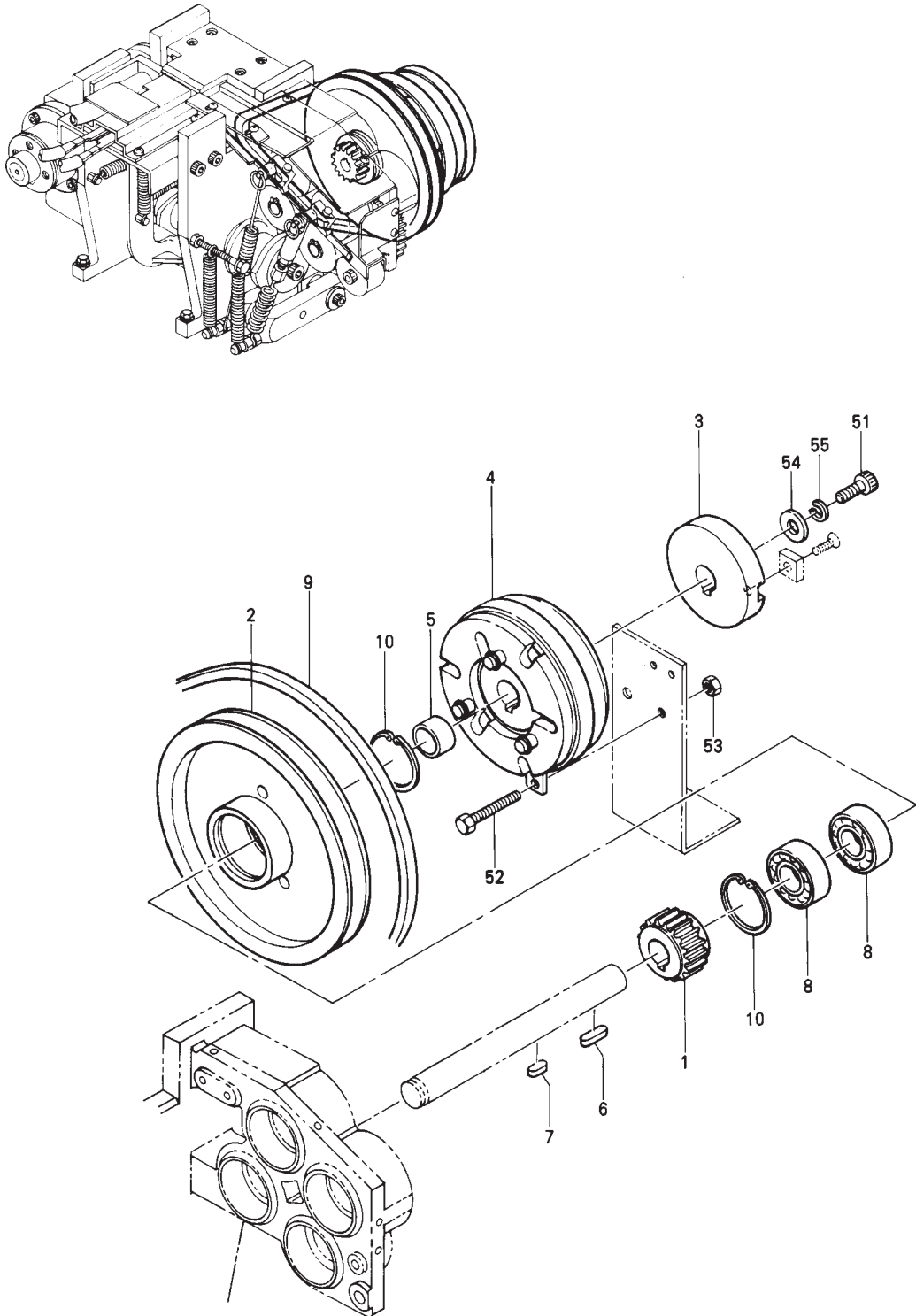
1-5 RIGHT MAIN FRAME GROUP



1-5 RIGHT MAIN GRAME GROUP

Nº	Reference	Description	Unit	Remarks
1	SEMI1501	Right control frame	1	
3	SEMI1503	Follower lever shaft	1	
4	SEMI1504	Hold springy hook	1	
5	SEMI1505	Springy hook	1	
51	SEMI1551	HBS, M6 x 15	2	
52	SEMI1552	HSS, M6 x 8	2	
53	SEMI1553	HB, M6 x 30	2	
54	SEMI1554	HN, M6	1	
55	SEMI1555	PW, M6	2	
56	SEMI1556	SW, M6	2	

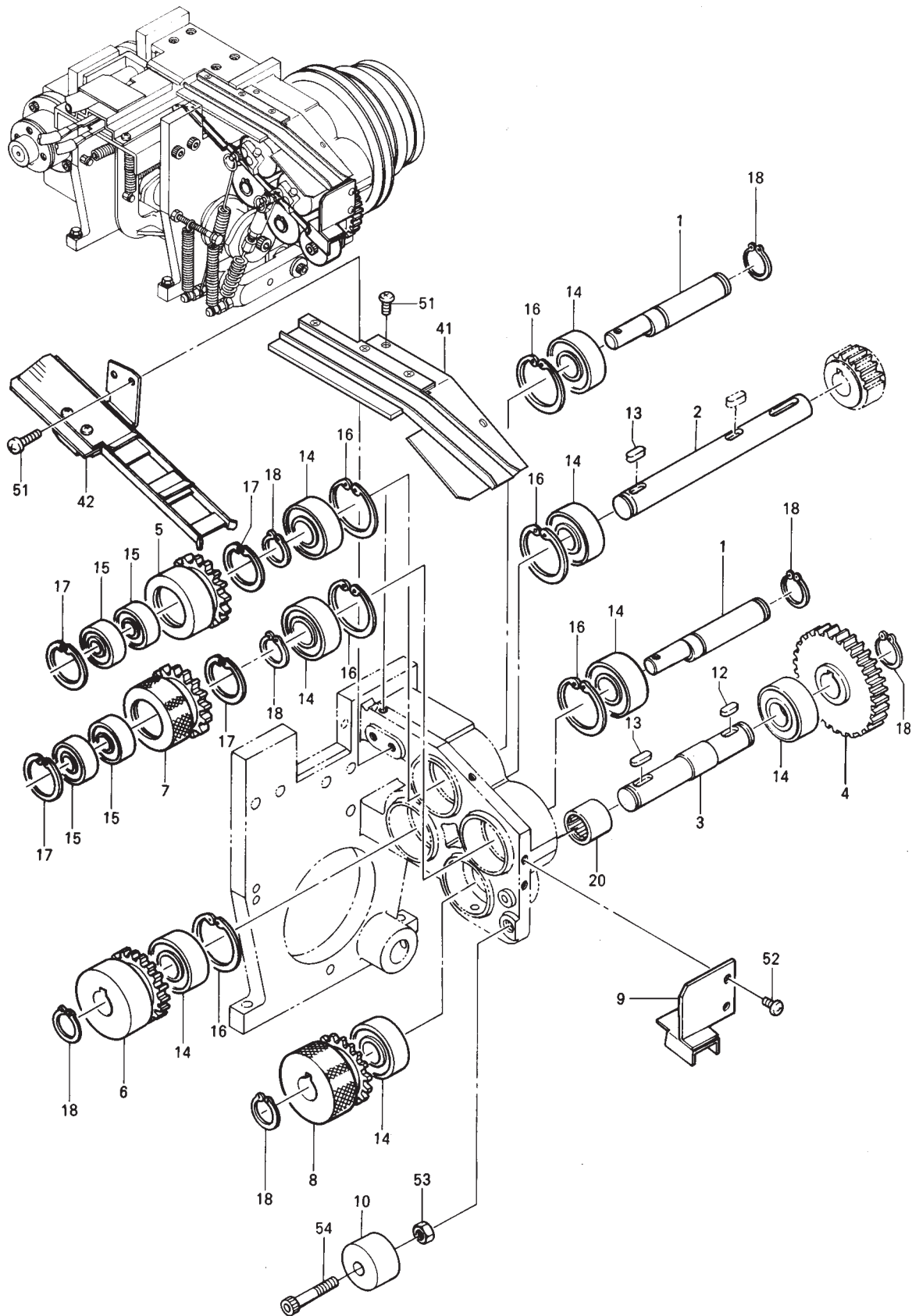
1-6 TENSION GROUP



1-6 TENSION GROUP

Nº	Reference	Description	Unit	Remarks
1	SEMI1601	Feed gear	1	
2	SEMI1602	Clutch pulley	1	
3	SEMI1603	Magnet holder	1	
4	281604	Magnetic clutch	1	
5	SEMI1605	Clutch collar	1	
6	SEMI1606	Key 5 x 5 x 22	1	
7	SEMI1607	Key 5 x 5 x 14	1	
8	SEMI1608	Ball bearing	2	6002 2RS
9	SEMI1609	V-Belt	1	Z 19 3/4"
10	SEMI1610	Seeger	2	
51	SEMI1651	HBS, M6 x 12	1	
52	SEMI1652	HB, M5 x 30	1	
53	SEMI1653	HN, M5	1	
54	SEMI1654	PW, M6	1	
55	SEMI1655	SW, M6	1	

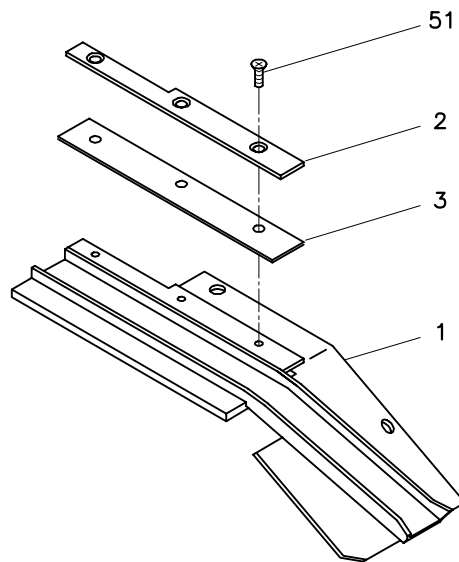
1-7A FEED GROUP



1-7A FEED GROUP

Nº	Reference	Description	Unit	Remarks
1	SEMI1701	Feed upper shaft	2	
2	SEMI1702	Feed lower shaft A	1	
3	SEMI1703	Feed lower shaft B	1	
4	SEMI1704	Feed gear	1	
5	SEMI1705	Feed upper roller	1	
6	SEMI1706	Feed lower roller	1	
7	SEMI1707	Reverse upper roller	1	
8	SEMI1708	Reverse lower roller	1	
9	SEMI1709	Strap guide	1	
10	SEMI1710	Guide roller	1	
11	SEMI1711	Guide roller shaft	1	
12	SEMI1712	Key 5 x 5 x 9	1	
13	SEMI1713	Key 5 x 5 x 14	2	
14	SEMI1714	Ball bearing	8	6202 ZZ
15	SEMI1715	Ball bearing	4	6000 ZZ
16	SEMI1716	Stop ring	6	
17	SEMI1717	Stop ring	4	
18	SEMI1718	Stop ring	7	
20	SEMI1720	One-way bearing	1	HF 1616
41		Right strap guide bracket	1	see 1-7B
42		Feed shooter bracket	1	see 1-7C
51	SEMI1751	TMS, M4 x 8	5	
52	SEMI1752	TMS, M4 x 6	2	
53	SEMI1753	HBS, M8 x 40	1	
54	SEMI1754	HN, M8	1	

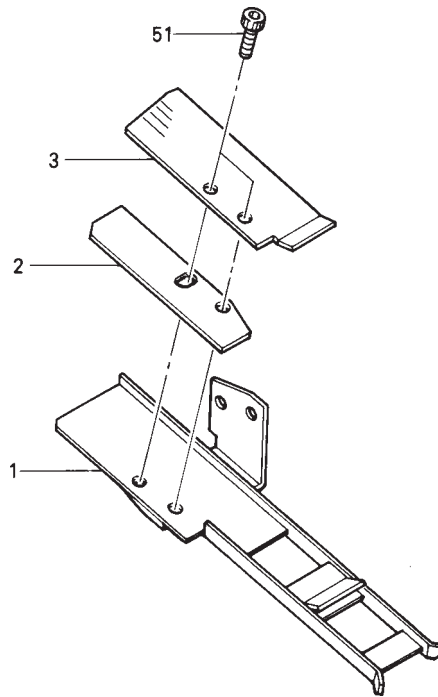
1-7B UPPER STRAP GUIDE



1-7B UPPER STRAP GUIDE

Nº	Reference	Description	Unit	Remarks
1	281721	Right strap guide plate	1	
2	281722	Upper plate	1	
3	281723	Plastic joint	1	
51	281751	FMS, M3 x 8	3	

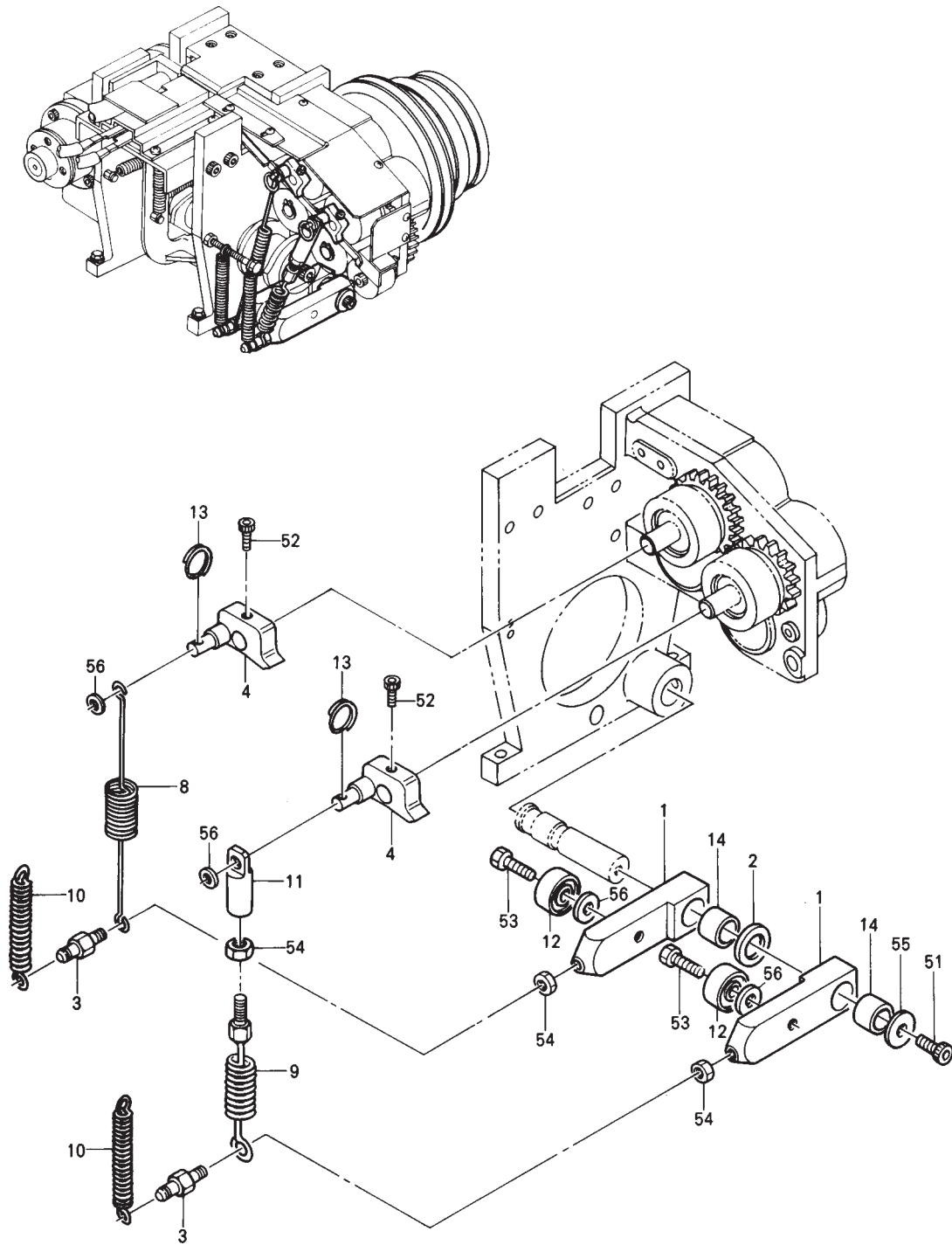
1-7C LOWER STRAP GUIDE



1-7C LOWER STRAP GUIDE

Nº	Reference	Description	Unit	Remarks
1	SEMI1723	Feed shooter lower guide	1	
2	SEMI1724	Feed shooter guide	1	
3	SEMI1725	Feed shooter plate	1	
51	SEMI1756	HBS, M4 x 10	2	

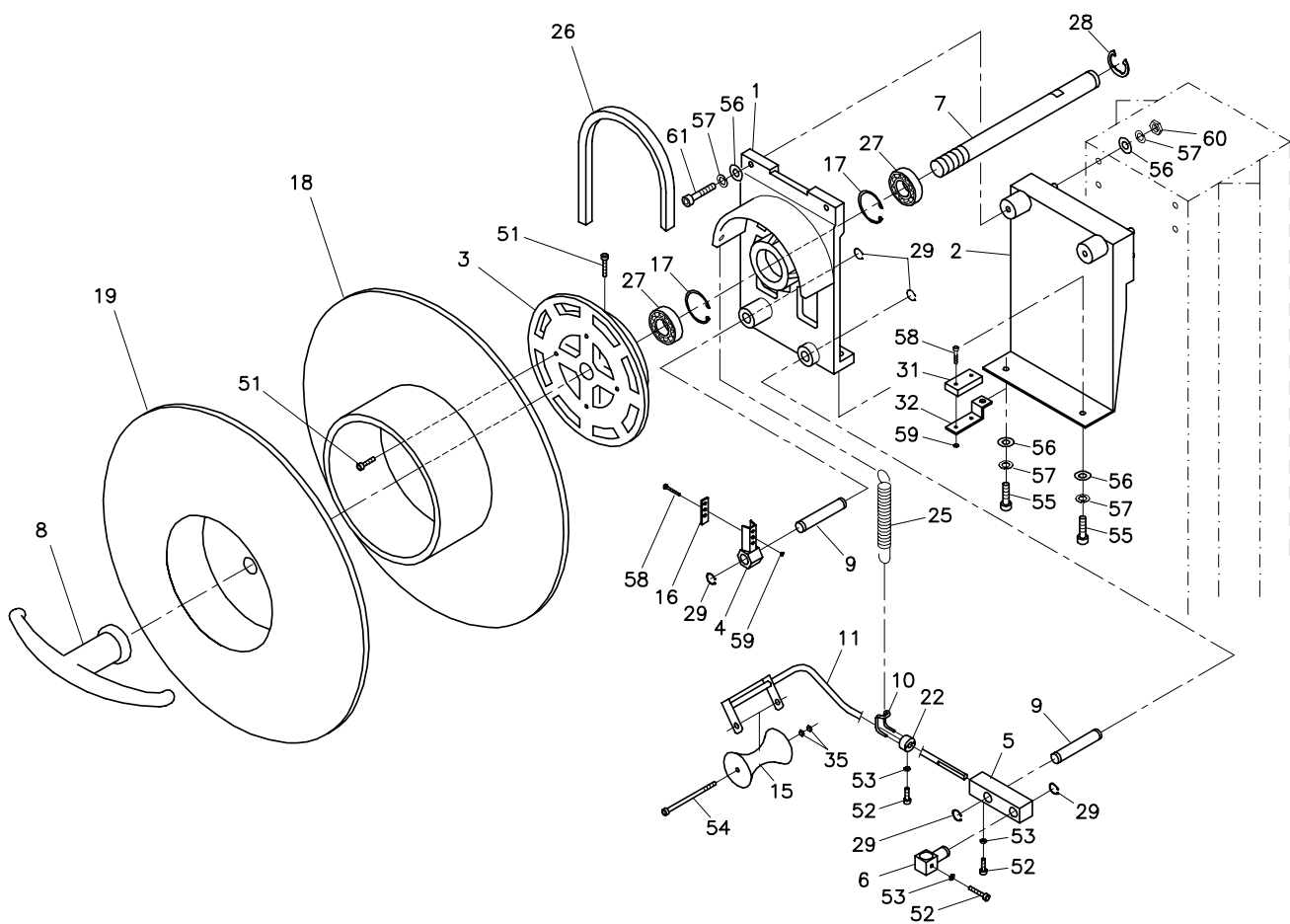
1-8 LAUNCH AND REVERSE GROUP



1-8 LAUNCH AND REVERSE GROUP

Nº	Reference	Description	Unit	Remarks
1	SEMI1801	Follower lever	2	
2	SEMI1802	Follower lever shaft spacer	1	
3	SEMI1803	Bolt rod end	2	
4	SEMI1804	Feed action link	2	
8	SEMI1808	Feed roller springy	1	
9	SEMI1809	Reverse roller springy	1	
10	SEMI1810	Action bar springy	2	
11	SEMI1811	Rod end	1	
12	SEMI1812	Ball bearing	2	626 ZZ
13	SEMI1813	Action link ring	2	
14	SEMI1814	Metal bushing	2	PAP 1515 P10
51	SEMI1851	HBS, M6 x 15	1	
52	SEMI1852	HSS, M6 x 6	2	
53	SEMI1853	HB, M6 x 20	2	
54	SEMI1854	HN, M6	3	
55	SEMI1855	PW, M6	1	
56	SEMI1856	PW, M6	4	

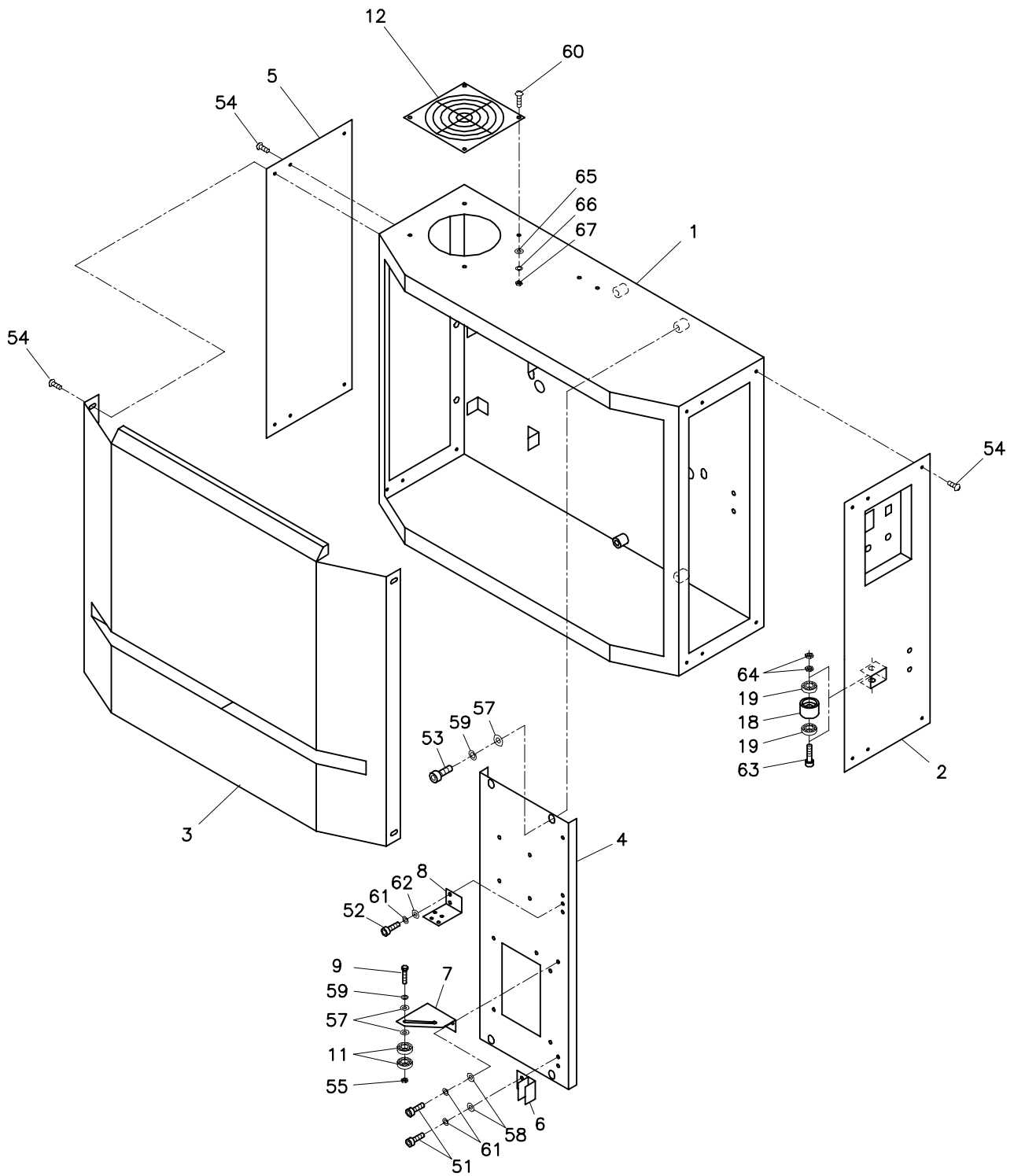
2 REEL GROUP



2 REEL GROUP

Nº	Reference	Description	Unit	Remarks
1	LAT1101	Reel group bracket	1	
2	281102	Reel base bracket	1	
3	AUT1103	Reel brake pulley	1	
4	AUT1104	Belt brake bracket	1	
5	AUT1105	Tension brake bracket	1	
6	AUT1106	Belt brake tensor	1	
7	AUT1107	Reel shaft	1	
8	AUT1108	Reel nut	1	
9	AUT1109	Bracket shaft	2	
10	AUT1110	Adjust springy hook	1	
11	281111	Brake arm	1	
15	281115	Strap guide roller	1	
16	AUT1116	Belt bracket plate	1	
18	AUT1118	Lower plate	1	
19	AUT1119	Reel support plate	1	
21	AUT1121	Friction collar	2	PAP 1525 P10
22	AUT1122	Brake springy regulator	1	
25	AUT1125	Brake arm springy	1	
26	AUT1126	Brake belt	1	
27	AUT1127	Balls roll	2	6205 ZZ
31	281131	Brake stick limit	1	
32	281132	Limit bracket	1	
34	AUT1134	Friction collar	1	PAP 1515 P10
51	AUT1151	HBS, M6 x 16	6	
52	AUT1152	HBS, M6 x 20	4	
53	AUT1153	HN, M6	6	
54	AUT1154	HBS, M6 x 100	1	
55	AUT1155	HBS, M8 x 20	2	
56	AUT1156	PW, M8	8	
57	AUT1157	SW, M8	8	
58	AUT1158	PMS, M4 x 20	5	
59	AUT1159	HN, M4	5	
60	AUT1160	HN, M8	4	
61	AUT1161	HBS, M8 x 35	2	

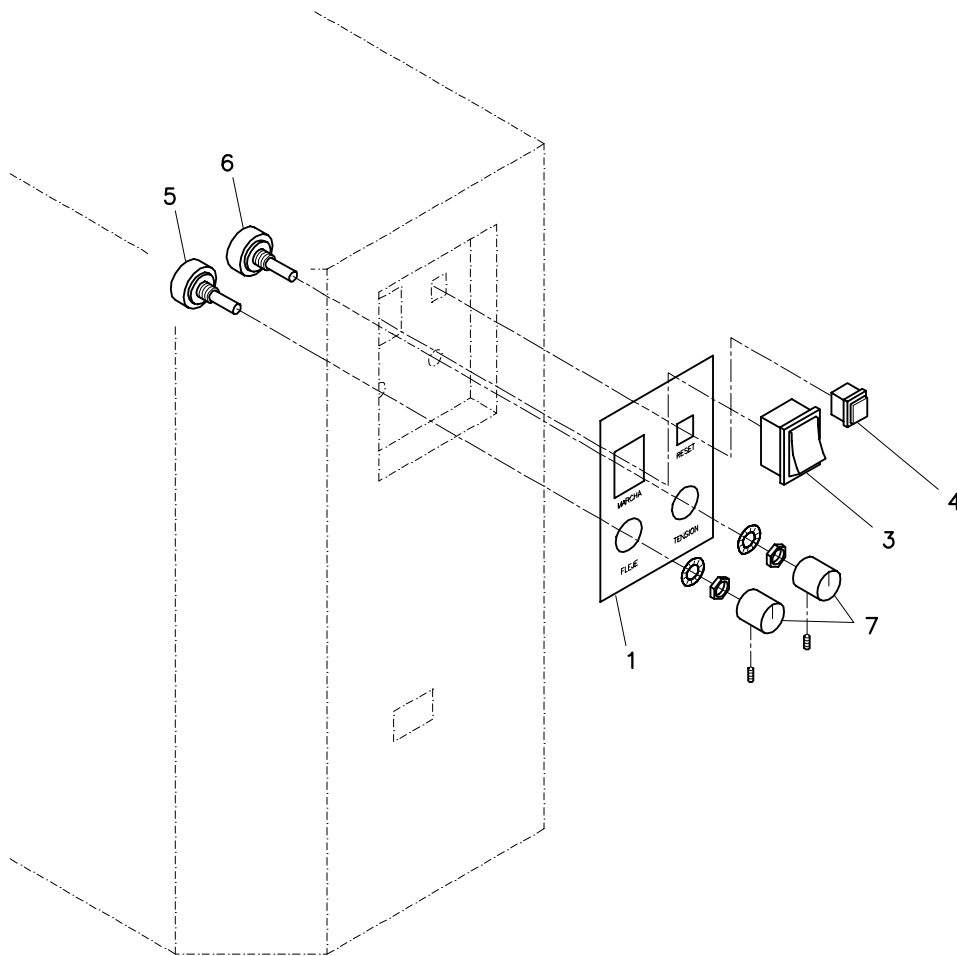
3 CAM BODY GROUP



3 CAM BODY GROUP

Nº	Reference	Description	Unit	Remarks
1	283001	Body	1	
2	283002	Right body	1	
3	283003	Front body	1	
4	283004	Cam base	1	
5	283005	Left plate	1	
6	SEMI3006	Micros separator	1	
7	SEMI3007	Tensor belt bracket	1	
8	SEMI3008	Bracket (LS3)	1	
9	SEMI3009	Adjust bearing screw	1	
11	SEMI3011	Balls bearing	2	608 ZZ
12	283012	Grille	1	
18	282018	Strap centralizer roller	1	
19	282019	Balls bearing	2	626 ZZ
51	SEMI3051	HBS, M6 x 20	4	
52	SEMI3052	HBS, M5 x 12	2	
53	SEMI3053	HBS, M8 x 20	4	
54	SEMI3054	TMS, M5 x 10	12	
55	SEMI3055	HN, M8	1	
57	SEMI3057	PW, M8	3	
58	SEMI3058	PW, M6	4	
59	SEMI3059	SW, M8	5	
60	SEMI3060	TMS, M4 x 15	4	
61	SEMI3061	SW, M5	2	
62	SEMI3062	PW, M5	2	
63	SEMI3063	HBS, M6 x 45	1	
64	SEMI3064	HN, M6	2	
65	SEMI3065	PW, M4	4	
66	SEMI3066	SW, M4	4	
67	SEMI3067	HN, M4	4	

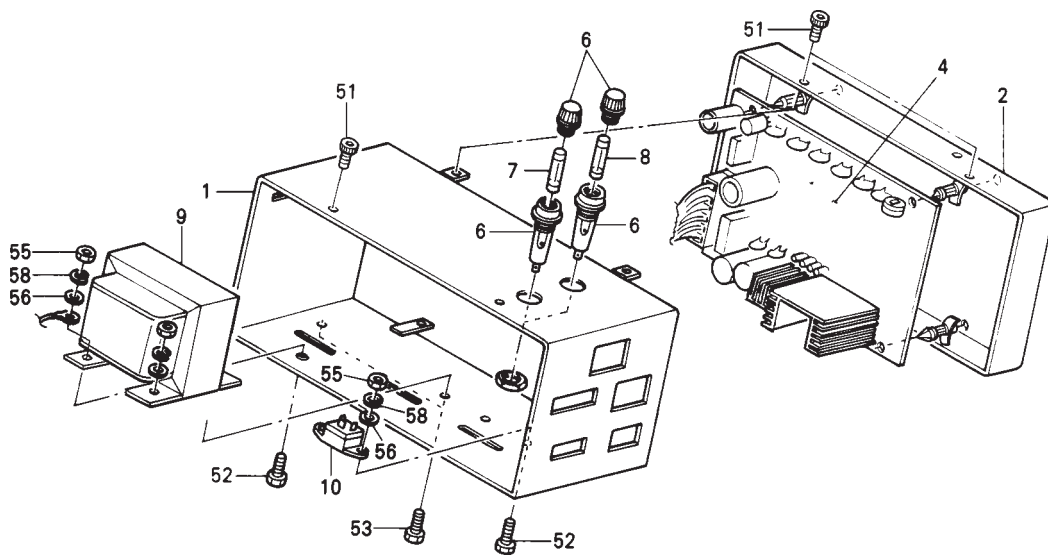
4-1 OPERATION PANEL GROUP



4-1 OPERATION PANEL GROUP

Nº	Reference	Description	Unit	Remarks
1	284001	Operation panel	1	
3	SEMI4003	Switch	1	
4	SEMI4004	Push button	1	
5	SEMI4005	Variable heater	1	
6	SEMI4006	Variable heater	1	
7	SEMI4007	Variable heater button	2	

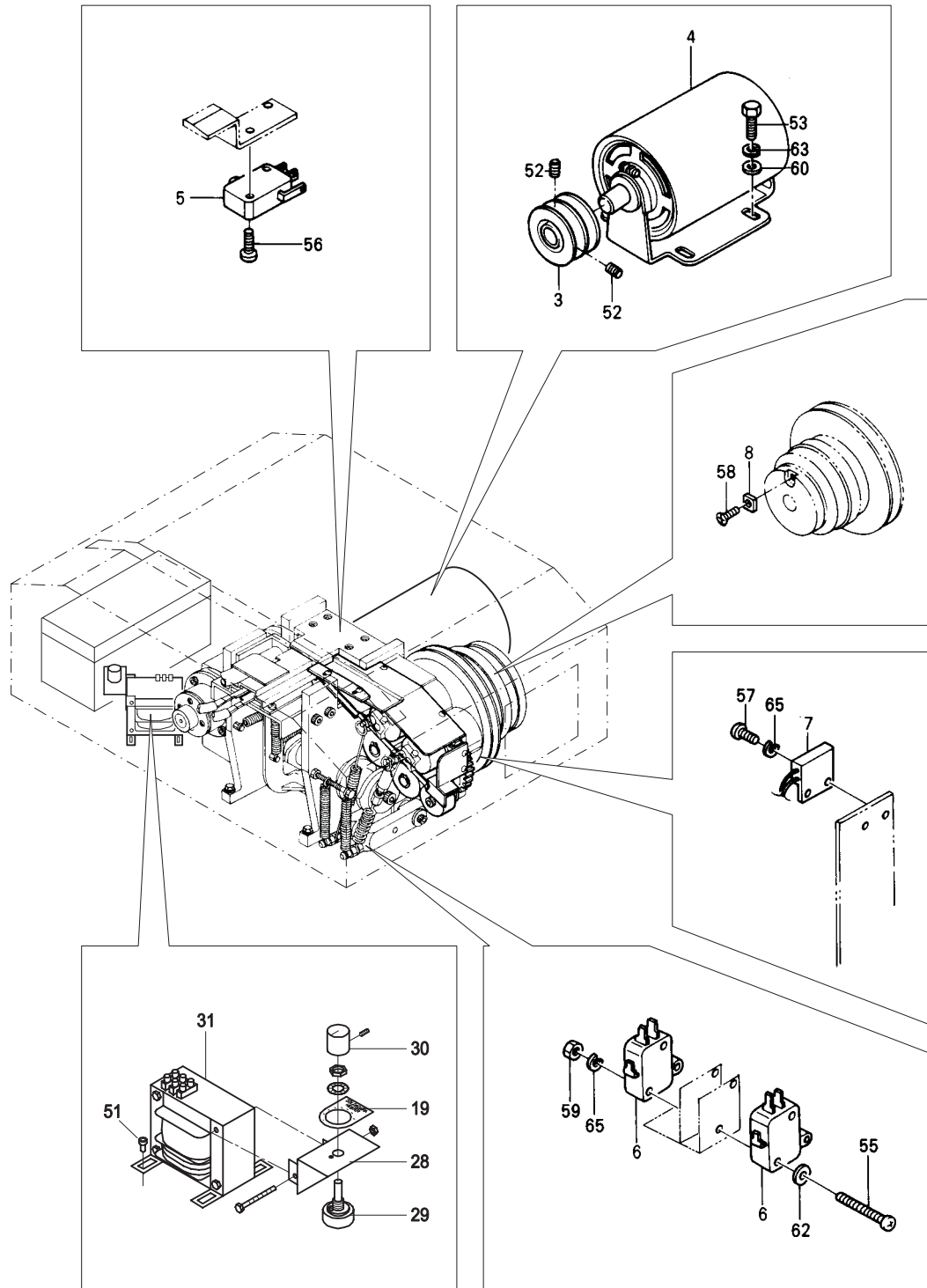
4-2 CONTROL GROUP



4-2 CONTROL GROUP

Nº	Reference	Description	Unit	Remarks
1	SEMI4008	Cover	1	
2	SEMI4009	cover plate	1	
4	SEMI4011	IC board	1	
6	SEMI4013	Fuse bracket	2	
7	SEMI4014	Fuse	1	10 A.
8	SEMI4015	Fuse	1	2 A.
9	SEMI4016	Handling transformer	1	220/240 V, 2 A.
10	SEMI4017	Triac	1	
51	SEMI4051	HBS, M4 x 6	8	
52	SEMI4052	HB, M4 x 10	2	
53	SEMI4053	HB, M4 x 8	4	
55	SEMI4055	HN, M4	6	
56	SEMI4056	PW, M4	6	
58	SEMI4058	SW, M4	6	

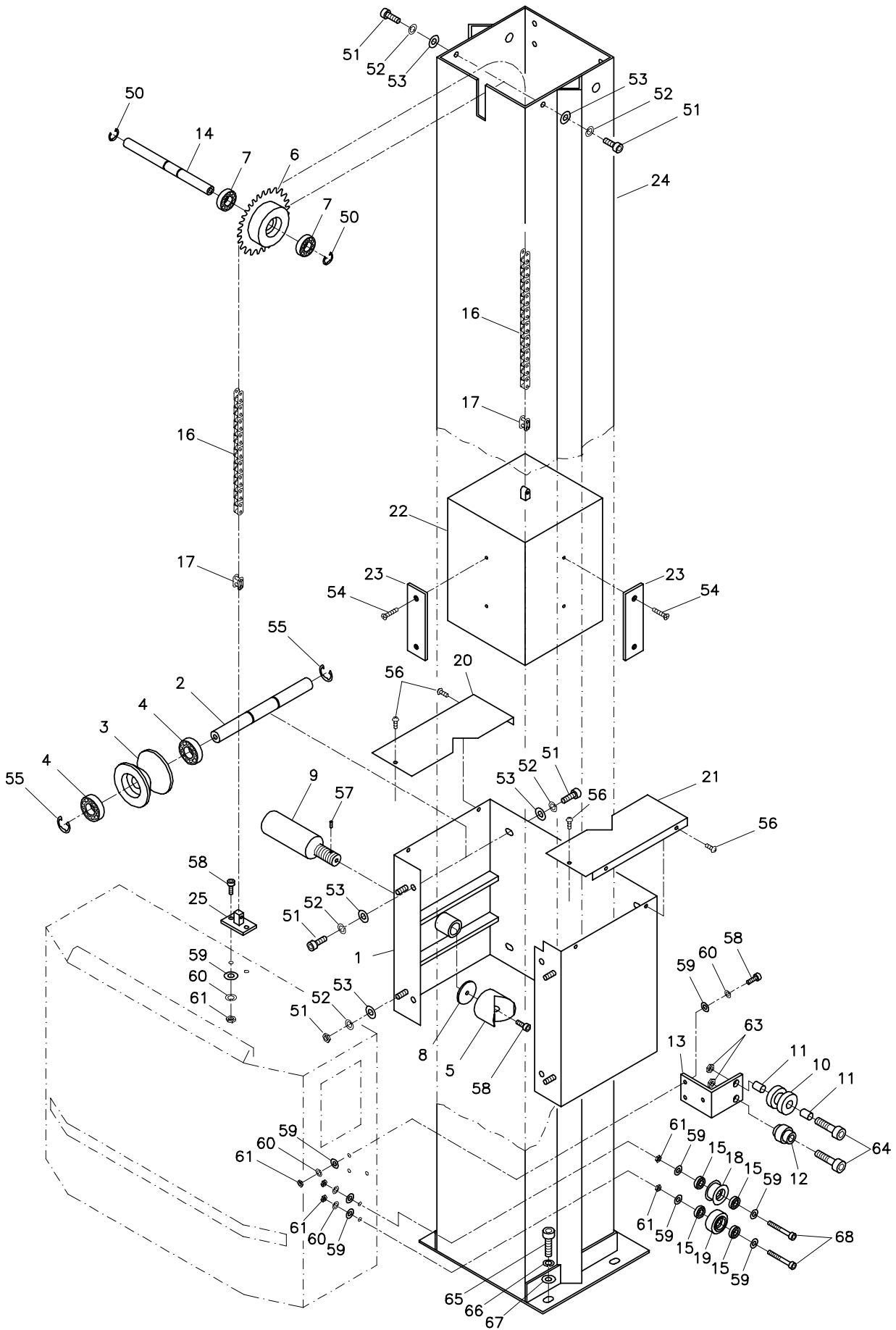
4-3 ELECTRIC GROUP



4-3 ELECTRIC GROUP

Nº	Reference	Description	Unit	Remarks
2	SEMI4019	Selector body	1	
3	SEMI4020	Motor pulley	1	
4	SEMI4021	Mono phasic motor	1	220/240 V 0,33 CV
5	SEMI4022	Micro	1	
6	SEMI4023	Micro	2	
7	SEMI4024	Magnetic switch	1	
8	SEMI4025	Magnet	1	
11	SEMI4028	Selector bracket squad	1	
12	SEMI4029	Selector	1	
13	SEMI4030	Operation selector button	1	
14	SEMI4031	Join transformator	1	220/240 V
51	SEMI4059	HBS, M4 x 10	4	
52	SEMI4060	HSS, M5 x 10	2	
53	SEMI4061	HB, M6 x 20	4	
55	SEMI4063	PMS, M3 x 25	4	
56	SEMI4064	PMS, M3 x 15	2	
57	SEMI4065	PMS, M3 x 10	2	
59	SEMI4067	HN, M3	4	
60	SEMI4068	PW, M6	4	
62	SEMI4070	PW, M3	4	
63	SEMI4071	SW, M6	4	
65	SEMI4073	SW, M3	6	

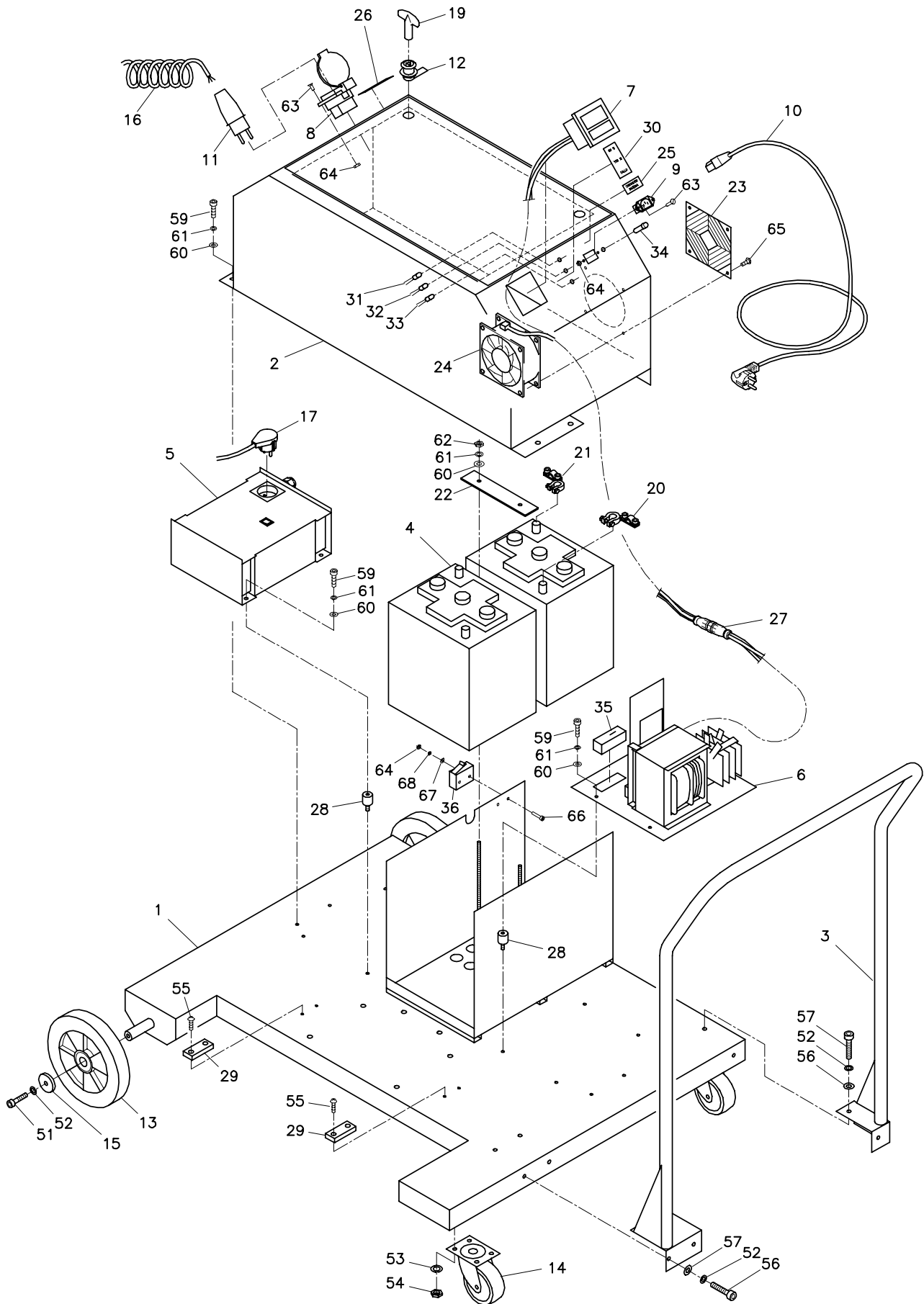
5 COLUMN AND REEL GROUP



5 COLUMN AND REEL GROUP

Nº	Reference	Description	Unit	Remarks
1	285001	Cart	1	
2	285002	Cart wheels shafts	4	
3	285003	Cart wheels	4	
4	285004	Wheels bearing	8	6004 Z
5	285005	Nylon break	1	
6	285006	Counterbalance pinion	1	Z 28 1/2"
7	285007	Pinion bearing	2	6202 ZZ
8	285008	Brake nut	1	
9	285009	Brake handle	1	
10	285010	Strap guide roller	1	
11	285011	Friction collar	2	PAP 1212 P10
12	285012	Strap roller	1	
13	285013	Roller bracket	1	
14	285014	Pinion chain shaft	1	
15	285015	Roller bearing	4	626 ZZ
16	285016	Chain	1	1/2"
17	285017	Chain hook	2	
18	285018	Female roller	1	
19	285019	Male roller	1	
20	285020	Left plate	1	
21	285021	Right plate	1	
22	285022	Counterbalance	1	
23	285023	Nilon plate	4	
24	285024	Column	1	
25	285025	Chain hook bracket	1	
51	SEMI5051	HBS, M8 x 20	10	
52	SEMI5052	SW, M8	14	
53	SEMI5053	PW, M8	14	
54	SEMI5054	PMS, 5 x 15	8	
55	SEMI5055	SELLER 15 Ø	8	
56	SEMI5056	PMS, 5 x 10	8	
57	SEMI5057	HSS, 5 x 5	1	
58	SEMI5058	HBS, 6 x 20	6	
59	SEMI5059	PW, M6	14	
60	SEMI5060	SW, M6	12	
61	SEMI5061	HN, M6	12	
62	SEMI5062	HN, M8	4	
63	SEMI5063	HN, M12	2	
64	SEMI5064	HBS, M12 x 55	2	
65	SEMI5065	HBS, M16 x 25	6	
66	SEMI5066	SW, 10	6	
67	SEMI5067	PW, 10	6	
68	SEMI5068	HBS, M6 x 45	2	

6 PLATFORM AND BATTERIES GROUP



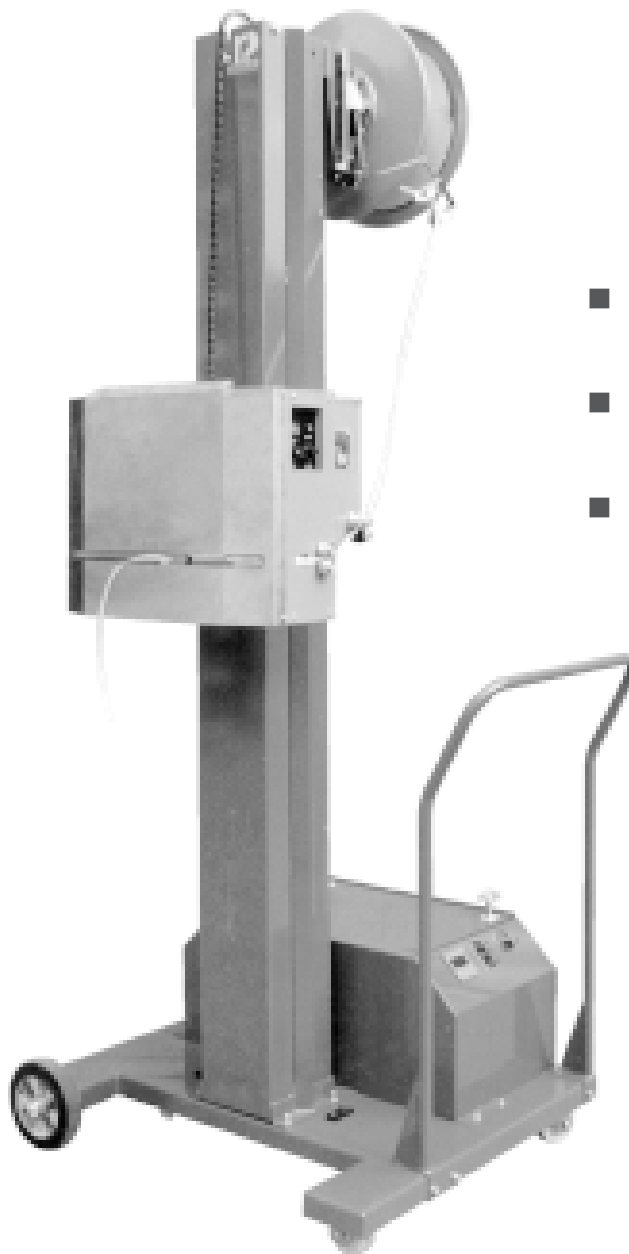
6 PLATFORM AND BATTERIES GROUP

Nº	Reference	Description	Unit	Remarks
1	286001	Platform	1	
2	286002	Batteries cover plate	1	
3	286003	Handle bracket	1	
3	286004	Batteries	2	
5	286005	Converter	1	
6	286006	Charging	1	
7	286007	Voltmeter	1	
8	286008	Monophasic base	1	
9	286009	Batteries charging base	1	
10	286010	Batteries charging plug	1	
11	286011	Straight monophasic switch	1	
12	286012	Lock	2	
13	286013	200 Ø whells	2	
14	286014	Revolving whells	2	
15	286015	Limit whells nuts	2	
16	286016	Stretch cable	1	
17	286017	Monophasic switch	1	
19	286019	Key	1	
20	286020	Battery terminal +	2	
21	286021	Battery terminal -	2	
22	286022	Fixation batteries plate	1	
23	286023	Grille	1	
24	286024	Ventilator	1	
25	286025	Batteries charging plate	1	
26	286026	220 V plate	1	
27	286027	Aerial connector	1	
28	286028	Shock absorber	8	
29	286029	Cart limit rubber	2	
30	286030	Charge etiquette 80 - 100 - Failure	1	
31	286031	Yellow led 80 % charge	1	
32	286032	Green led 100 % charge	1	
33	286033	Red led - Failure	1	
34	286034	Batteries charging neon LI	1	
35	286035	32 Amp. Fuse 14 x 51 FI	1	
36	286036	Limit switch	1	
51	SEMI1251	HBS, M8 x 20	2	
52	SEMI1252	SW, RM8	9	
53	SEMI1253	SW, RM10	8	
54	SEMI1254	HN, RM10	8	
55	SEMI1255	PMS, M4 x 16	4	
56	SEMI1256	PW, RM8	7	
57	SEMI1257	HB, M8 x 15	7	
59	SEMI1259	HBS, M6 x 16	14	
60	SEMI1260	SW, RM6	16	
61	SEMI1261	PW, RM6	16	
62	SEMI1262	HN, RM6	2	
63	SEMI1263	FMS, M4 x 10	6	
64	SEMI1264	HN, RM4	8	
65	SEMI1265	PMS, M5 x 15	4	
66	SEMI1266	HBS, M4 x 30	2	
67	SEMI1267	PW, M4	2	
68	SEMI1268	SW, M4	2	



SEMI-AUTOMATIC HORIZONTAL STRAPPING MACHINE

MODEL 2800



- INSTRUCTIONS MANUAL
- PRODUCT EXPLODED VIEW
- SPARE PARTS LIST