



Control modules for efficient heating

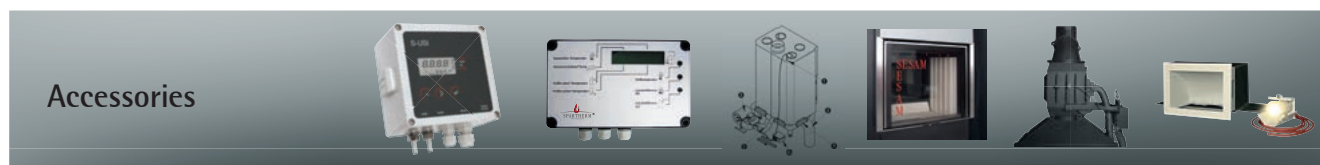
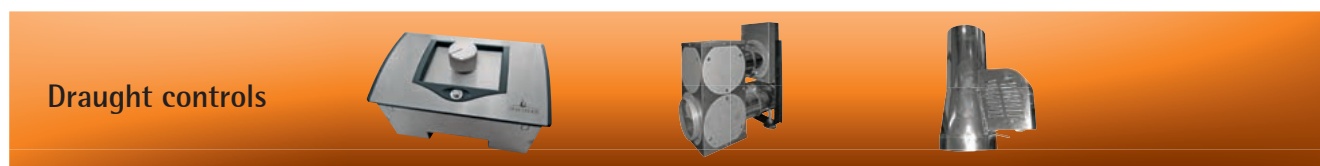


.....
Simple, intelligent and comfortable heating.

Content

- Combustion controls | S-Thermatik 4
- Draught controls | S-Kamatik 10
- Accessories | S-USI · Hydro Control · S-Vent · S-ESAM · S-Air 1 · S-AirBox14

SPARTHHERM offers practical solutions.



Until not so very long ago, heating systems in homes were of simple design. One fuel, one burner – more was not needed. As a consequence of the development of energy prices and the growing ecological awareness, isolated single solutions can be found only rarely today. They have been replaced by combinations of different heating systems, in each case tailored to the individual life situation, the location of the house and the style in which it is built.

Simple, intelligent and comfortable heating.

Control and regulation as a contribution to environmental protection?

The higher the required heating load, the more important is the control of combustion. Electronic control improves efficiency, makes combustion economic and, in addition, adds comfort by the time saved for heating. Besides, fuel is also saved.

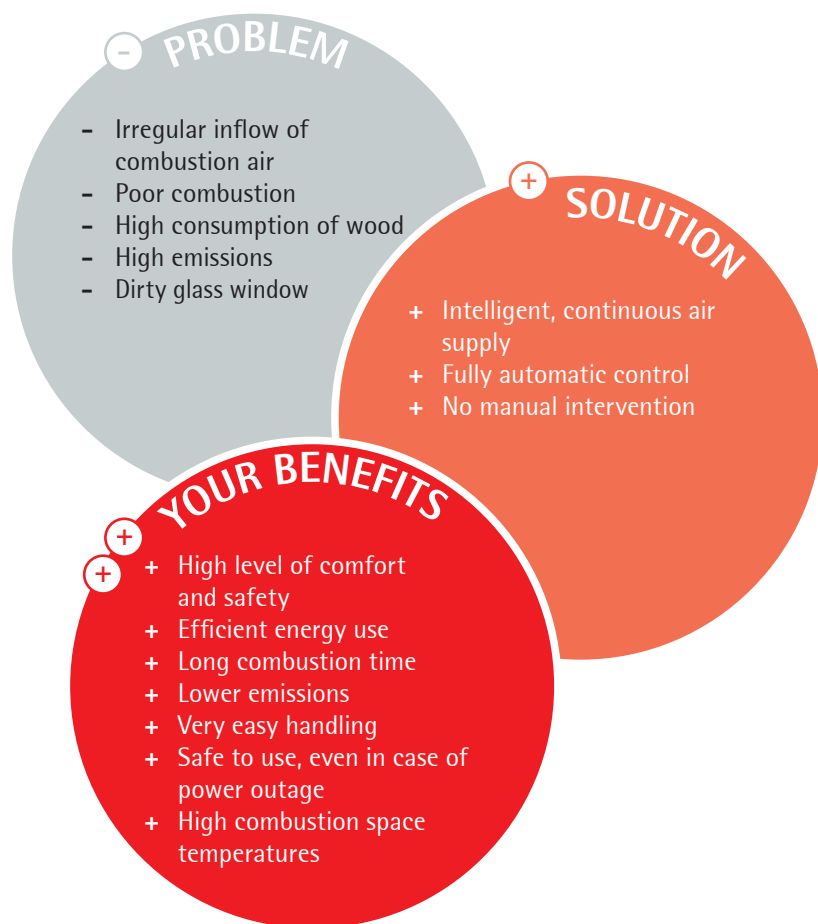
Whatever the application, whether smoke outlet, combustion process or other comfortable solutions – SPARTHERM has the optimum solution for you in any case – because we are on fire for you.



Combustion control | **S-Thermatik**

S-Thermatik · S-Thermatik Pro · S-Thermatik Global · S-Thermatik Mini

The automatic system, which supplies just as much air as is needed, controls the combustion to ensure that the process is clean and the fire perfect.

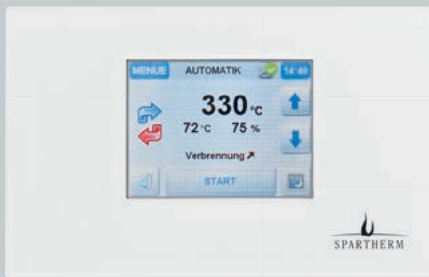


Poor combustion is the source of many problems. The easy-to-handle appliances from SPARTHERM not only put you in control of these problems, you also enjoy a number of benefits in line with our motto:

Simple, intelligent and comfortable heating.

Features of S-Thermatik

- Automatic control of the air supply by combustion air dispenser integrated in the fireplace.
- Different distribution of primary and secondary air inside the unit – instead of simply throttling the flow of combustion air. No simple throttle in the intake socket.
- Fireplace specific combustion parameters are pre-programmed. Simply select your fireplace in the menu and rely to receive optimum air control for best wood combustion. This is preset in the factory.
- If power should fail the air can be controlled manually by a lever.
- Access to all control components through the combustion chamber.
- Simply, clearly designed and large display.



White

IMPROVED



Black



Stainless steel



Stainless steel,
arched

S-Thermatik Pro scope of supply

- Full colour display with plain text display and touch screen
- Connecting lines
- Exhaust gas temperature sensor (thermocouple NiCr-Ni type K) with 5m connecting cable
- Terminal box with control and mains feed



IMPROVED

S-Thermatik Global scope of supply

- Full colour display with plain text display and touch screen
- Connecting lines
- Exhaust gas temperature sensor (thermocouple NiCr-Ni type K) with 5m connecting cable
- Terminal box with control and wall power supply
- Combustion air throttle with actuator
- Door contact switch

S-Thermatik Pro

The professional combustion control with extensive additional functions.

S-Thermatik Pro takes over the optimum control of primary and secondary air during combustion and thereby ensures optimum combustion. Combustion can also be controlled manually at the air control lever at any time, e.g., if power fails.

Preassembled at the fireplace

- Actuator with magnetic clutch in the separate combustion air socket (SVS) (order SVS socket separately)
- Door contact switch

S-Thermatik Pro functions

- 2 additional temperature inputs for thermocouples NiCr-Ni (type K)
- 3 additional temperature inputs for PT1000, e.g., for display of the buffer reservoir
- 3 additional relay outputs for controlling pumps, extractor hoods, etc.
- 3 additional servo outputs for controlling throttle positions and valves
- **NEW:** Multiple-language user surface
- **NEW:** Active control to prevent overheating of the fireplace
- **NEW:** Selection option, the user can select the combustion power between normal, high and low

Retrofitting is not possible. Please always order together with the fireplace. Or order the installation kit in advance.

Flush frame optionally available for arched display

S-Thermatik Global

The compact universal combustion control system for any fireplace.

S-Thermatik Global, the combustion control system with motorized supply air throttle. Suitable for Spartherm fireplaces without wheel-type air dispenser. Actuator with spring return. The supply air throttle opens in case of power failure.

S-Thermatik Global functions

S-Thermatik Global has the same additional functions as S-Thermatik Pro.

If S-Thermatik Global is ordered for a Spartherm fireplace, the associated door contact switch is installed at the fireplace.

- **NEW:** Multiple-language user surface
- **NEW:** Active control to prevent overheating of the fireplace
- **NEW:** Selection option, the user can select the combustion power between normal, high and low

S-Thermatik Global can be retrofitted.

Flush frame optionally available for arched display

S-Thermatik

The traditional combustion control.

The combustion control sets the required combustion air flow automatically during the combustion process. Combustion can be controlled manually at the air lever at any time. In case of power failure the combustion air setting of the fireplace can be adjusted manually with the "cold hand" as usual.

Preassembled at the fireplace:

- Actuator with magnetic clutch in the separate combustion air socket (SVS) (order SVS socket separately)
- Door contact switch

Additional functions of S-Thermatik

- 1 additional temperature input for thermocouples NiCr-Ni (type K).
- Display for information only, the measured temperature has no effect on the combustion control.

Retrofitting is not possible. Please always order together with the fireplace.

Flush frame optionally available

S-Thermatik Mini

The low-priced but highly efficient combustion control system, only for stoves.

Combustion air setting is automatic or by hand. The setting can be changed at the rotary knob at any time. In automatic mode, the lighting of the fire and the piling up of wood are detected by the door contact switch. Combustion progress is monitored and controlled by the exhaust temperature sensor.

There is no external display. Automatic mode is indicated by a lamp (illuminated logo) and can also be seen by the movement of the air throttle.

Detachable audible signal for wood pile-up interval.

Retrofitting is not possible. Please always order together with the fireplace.



S-Thermatik scope of supply

- Control unit with display and flush-mounted socket
- Connecting lines
- Exhaust temperature sensor (thermocouple NiCr-Ni type K) with 5 m connecting line
- Terminal box with mains feed (230 V)



S-Thermatik Mini scope of supply

- Exhaust temperature sensor and door contact switch
- Actuator with mechanical unlock function
- Control with power supply unit
- Indicator lamp integrated in the bottom door of the stove
- Operation and service manual

S-Thermatik – Pro / Mini / Global applications

	S-Thermatik			
		Pro	Mini	Global
Fireplace inserts				
Arte 1 Vh	-	-	-	-
Arte Bh	-	-	-	-
Arte BRh	yes	yes	-	-
Arte BRh + Thermobox	yes	yes	-	-
Arte BRh + Aquabox	yes	yes	-	-
Arte BRh + Helix	-	-	-	-
Arte Uh 50	-	-	-	-
Arte Uh 70	-	-	-	-
Arte Uh 90	-	-	-	-
Arte Xh / X-FD	-	-	-	yes
Arte 3RLh 100	yes	yes	-	-
Arte 3RLh 80	yes	yes	-	-
Arte 3RLh 60	yes	yes	-	-
Stove cassette small	-	-	-	-
Stove cassette large	-	-	-	-
Mini 2L / 2Lh / 2R / 2Rh	yes	yes	-	-
Mini 2L / 2Lh / 2R / 2Rh + Helix	yes	yes	-	-
Mini 2L / 2Lh / 2R / 2Rh + Thermobox	yes	yes	-	-
Mini 2L / 2Lh / 2R / 2Rh + Aquabox	yes	yes	-	-
Mini R 1V / R 1Vh	yes	yes	-	-
Mini Z1 (7kW)	yes	yes	-	-
Mini Z1 (7kW) + Helix	yes	yes	-	-
Mini Z1 (7kW) + Thermobox	yes	yes	-	-
Mini Z1 (10kW) + NSHF	yes	yes	-	-
Mini Z1 H ₂ O	yes	yes	-	-
Mini Z1 H ₂ O XL	yes	yes	-	-
Mini Sh	-	-	-	yes
Mini S-FDh	yes	yes	-	-
Mini M1 G2	-	-	-	-
Mini M1 G3	-	-	-	-
Mini M1 G4	-	-	-	-
Mini M1 GL / GR	-	-	-	-
Mini M2 G2	-	-	-	-
Mini M2 G3	-	-	-	-
Mini M2 G4	-	-	-	-
Mini M2 GL / GR	-	-	-	-
Speedy M / Mh / MR / MRh	yes	yes	-	-
Speedy M / Mh / MR / MRh + Helix	-	-	-	-
Speedy M / Mh / MR / MRh + Thermobox	yes	yes	-	-
Speedy M / Mh / MR / MRh + Aquabox	yes	yes	-	-
Speedy M / Mh / MR / MRh + NSHF	yes	yes	-	-
Speedy K / Kh / R / Rh / 1V / 1Vh	yes	yes	-	-

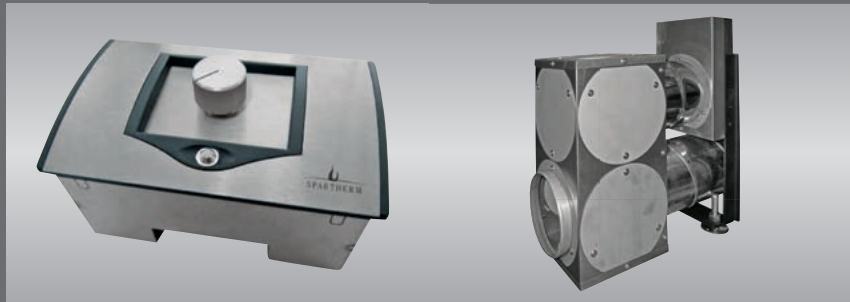
	S-Thermatik			
		Pro	Mini	Global
Speedy K / Kh / R / Rh / 1V / 1Vh + Helix	yes	yes	-	-
Speedy K / Kh / R / Rh / 1V / 1Vh + Thermobox	yes	yes	-	-
Speedy K / Kh / R / Rh / 1V / 1Vh + Aquabox	yes	yes	-	-
Speedy K / Kh / R / Rh / 1V / 1Vh + NSHF	yes	yes	-	-
Speedy Ph	yes	yes	-	-
Speedy E / Eh	yes	yes	-	-
Speedy MDRh	yes	yes	-	-
Speedy MDRh + Helix	-	-	-	-
Speedy MDRh + Thermobox	-	-	-	-
Speedy MDRh + Aquabox	-	-	-	-
Speedy RDRh	-	-	-	-
Varia 1V / 1Vh	yes	yes	-	-
Varia 1V / 1Vh + Helix	yes	yes	-	-
Varia 1V / 1Vh + Thermobox	yes	yes	-	-
Varia 1V / 1Vh + Aquabox	yes	yes	-	-
Varia FD / FDh	yes	yes	-	-
Varia FD / FDh + Helix	-	-	-	-
Varia FD / FDh + Thermobox	-	-	-	-
Varia FD / FDh + Aquabox	-	-	-	-
Varia 2L / 2Lh / 2 LRh / 2R / 2Rh / 2RRh	yes	yes	-	-
Varia 2L / 2Lh / 2 LRh / 2R / 2Rh / 2RRh + Thermobox	yes	yes	-	-
Varia 2L / 2Lh / 2 LRh / 2R / 2Rh / 2RRh + Helix	yes	yes	-	-
Varia 2L / 2Lh / 2 LRh / 2R / 2Rh / 2RRh + Aquabox	yes	yes	-	-
Varia 2L-55h / 2R-55h	yes	yes	-	-
Varia 2L-100h / 2R-100h	yes	yes	-	-
Varia 2L-100h / 2R-100h + Helix	-	-	-	-
Varia 2L-100h / 2R-100h + Thermobox	-	-	-	-
Varia Ah	yes	yes	-	-
Varia AFDh	yes	yes	-	-
Varia AFDh + Helix	yes	yes	-	-
Varia Ch / 3RL / 3RLh	yes	yes	-	-
Varia C 45h	yes	yes	-	-
Varia M60h GET	yes	yes	-	-
Varia 2Lh / 2Rh 55 GET	yes	yes	-	-
Varia M 80h	-	-	-	-
Varia M 100h	-	-	-	-

	S-Thermatik			
		Pro	Mini	Global
Varia S / Sh / SRh / Eh	-	-	-	yes
Varia B / Bh / Beh	-	-	-	yes
Varia B-120	-	-	-	yes
Varia B-FDh	-	-	-	yes
Varia Ah H ₂ O	yes	yes	-	-
Varia AFD / AFDh H ₂ O	yes	yes	-	-
Varia 1V H ₂ O	yes	yes	-	-
Varia 1V H ₂ O XL	yes	yes	-	-
Varia 1V H ₂ O XXL	yes	yes	-	-
Varia 2Lh / 2Rh H ₂ O	yes	yes	-	-
New basic stove door GOT -T3 1V, round, prism	-	-	-	yes

Classic tiled stoves				
Nova E H ₂ O / Nova E H ₂ O + NSFH	yes	yes	-	-
Nova F Air	yes	yes	-	-
Renova A H ₂ O	yes	yes	-	-
Renova B Air	yes	yes	-	-

stoves ambiente				
a1 / a1 RLU	-	-	yes	-
a2 / a2 RLU	-	-	yes	-
a3 / a3 RLU	-	-	yes	-
a4 / a4 RLU	-	-	yes	-
a4 H ₂ O	-	-	yes	-
a5	-	-	-	-
a7	-	-	-	-
a8	-	-	-	-

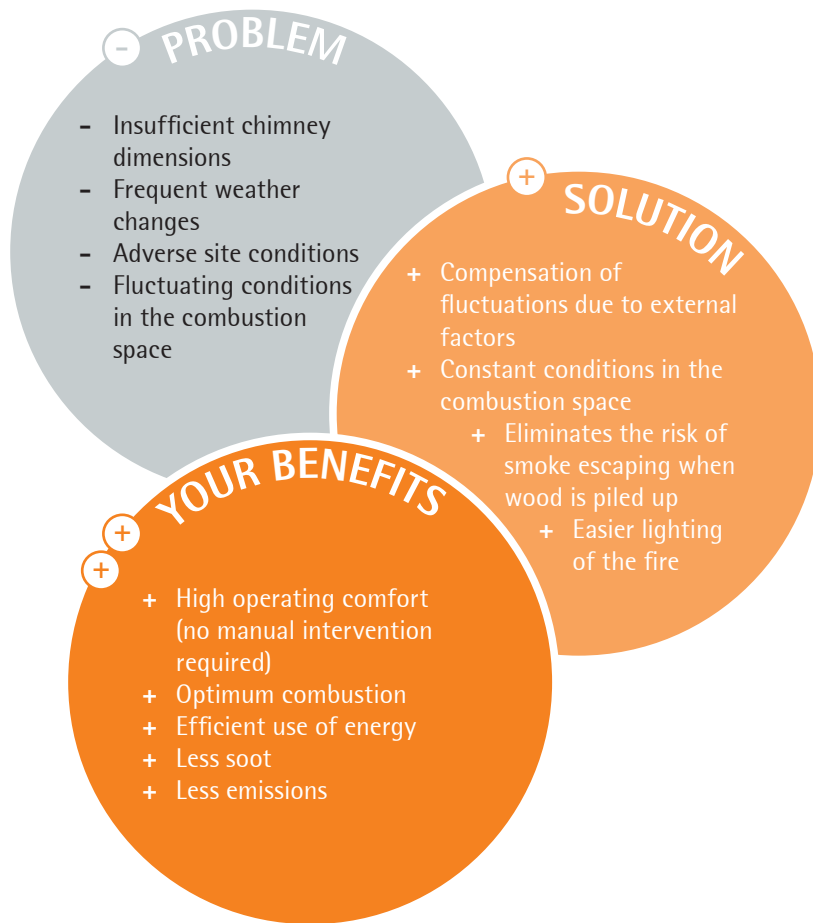
	S-Thermatik			
		Pro	Mini	Global
stoves selection				
Piko H ₂ O	-	-	yes	-
Senso M H ₂ O	-	-	yes	-
Senso S, L	-	-	yes	-
Stovo S, M, L	-	-	yes	-
Sino L	-	-	yes	-
Passo S, L	-	-	yes	-
Passo XS, M	-	-	-	-
Piko S, M, L	-	-	-	-
Trias L	-	-	-	-
Piu L	-	-	-	-
Cubo S, M, L	-	-	-	-



Draught control | **S-Kamatik**

S-Kamatik · S-Kamatik Plus · S-Kamatik Pro II

Economical and environmentally compatible heating with automatic draught control.



The state of the building and external weather conditions are only two causes affecting combustion. Our devices compensate these fluctuations in line with our motto:

Simple, intelligent and comfortable heating.

Draught under complete control

- Stove draught has been discussed vehemently for a couple of years. The new S-Kamatik is SPARTHERM's answer to this issue.
- If you can control the underpressure in the chimney, you control the fire and the economy of heating. And you also benefit the environment. The drive for ever new combustion space geometries makes the fireplace ever more dependent on the ideal stove draught in the range from 12-20 Pascal.
- So far, in addition to calculating a sufficient stove draught, the only remedy against poor draught was the installation of a throttle or the expensive and time-consuming service-fitting of an electrical chimney fan.

Now, S-Kamatik controls the stove draught.

- Available as S-Kamatik, S-Kamatik Plus and S-Kamatik PRO II.



S-Kamatik PRO II

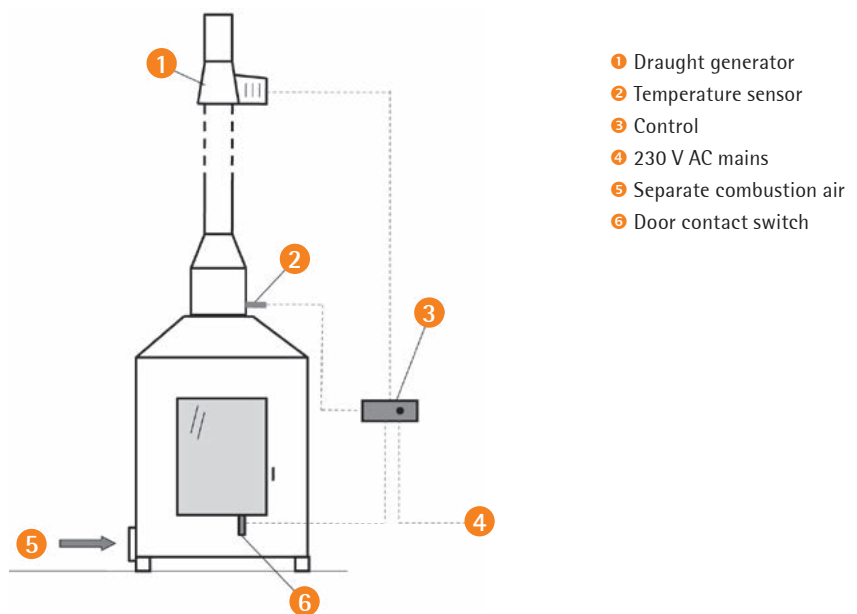
The automatic draught generator control.

- Draught generator additionally installed on the chimney, compensates poor draught in the starting phase, during adverse weather or generally poor draught
- Reduces the emission of smoke when piling up wood because the door contact switch causes increased updraught of flue gases in the pile-up phase
- Electronic compensation of the draught by draught generator and extraneous air throttle to keep the draught in a pre-defined range.
- Assists the start of „cold“ stainless steel chimneys at the outer wall by draught generator and door contact switch

Retrofitting is not possible. Please always order together with the fireplace.

S-Kamatik PRO II scope of supply

- Draught generator
- Door contact switch
- S-Kamatik Pro II control, incl. temperature sensor
- Mains feed



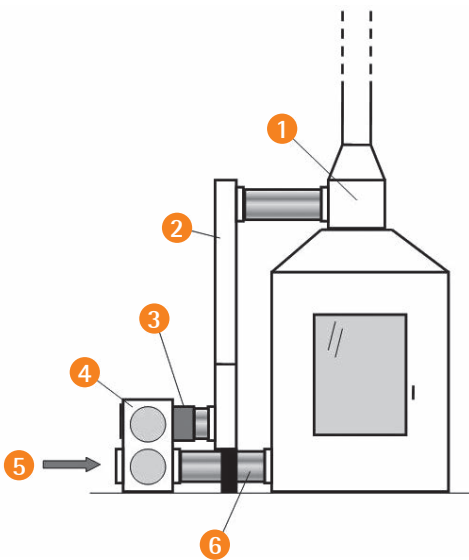
- ❶ Draught generator
- ❷ Temperature sensor
- ❸ Control
- ❹ 230 V AC mains
- ❺ Separate combustion air
- ❻ Door contact switch

S-Kamatik

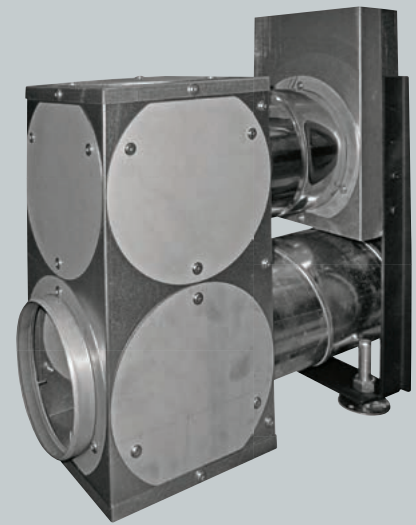
The draught limiter.

- Patented extraneous air throttle integrated in the fireplace for reliable draught in the predefined range
- Reasonable and cost-efficient solution when the negative pressure in the chimney is high
- Entry of extraneous air in the chimney by combination with the separate combustion air
- No soiling of the glass door due to high suction pressure
- Clean combustion at high temperatures and best efficiency

Retrofitting is not possible. Please always order together with the fireplace.



- ❶ Bypass connection socket
- ❷ Thrust module
- ❸ Secondary air throttle
- ❹ Outside air module
- ❺ Separate combustion air
- ❻ VA flexible pipe



S-Kamatik scope of supply

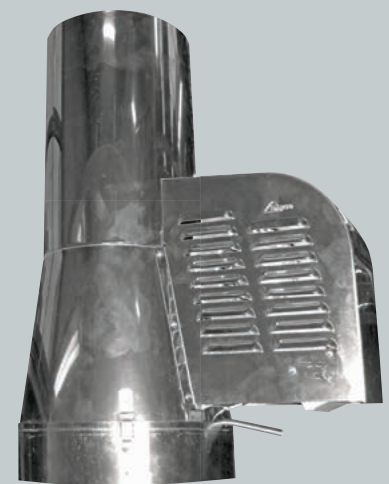
- Secondary air connection socket
- Outside air module
- Thrust module for altitude compensation
- Bypass connection socket
- VA flexible pipe
- Clips

S-Kamatik Plus

The draught generator.

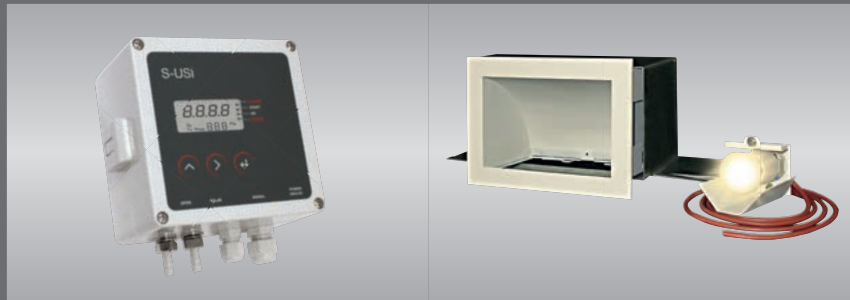
- A draught generator mounted on top of low-draught chimneys or where ambient conditions are poor (e.g., on hillsides)
- Constant draught can be controlled as required
- Available both as \varnothing 150 mm and \varnothing 200 mm flue pipe slip-on version or as flat chimney head version
- Cleaning by chimneysweep without removal of the draught generator

Retrofitting is possible.



S-Kamatik Plus scope of supply

- Speed regulator with control buttons
- Draught generator with 3 m connection line with fall arrester
- Installation and operation manual



Accessories |

S-USI · Hydro Control · S-Vent · S-ESAM · S-Air 1 · S-AirBox

Accessories for clever integration.

S-USI

Spartherm negative pressure switching interface

See next page for more details



When ventilation systems and fireplaces are used at the same time it can happen that dangerous flue gases enter the room with the fireplace. Our S-USI monitors your safety continuously in line with our motto:

Simple, intelligent and comfortable heating.

PROBLEM

- Dangerous negative pressure causes flue gas to enter the room in which the stove is set up
- The safety risk cannot be calculated
- Malfunction of the apartment ventilation system

SOLUTION

- + Automatic monitoring of ambient conditions
- + Automatic turning off of ventilation systems if a malfunction occurs

YOUR BENEFITS

- + Safety due to the parallel operation of ventilation systems and fireplaces
- + Confidence in automatic function
- + Safety DIBt-tested and approved by the competent building authorities

Our clever accessories can be integrated extremely well and take care of

- Reliable safety in operation
- Comfortable operation
- Eye-catcher
- Environmentally compatible heating



S-USI scope of supply

- S-USI (incl. fasteners)
- Silicone tube
- Angle measuring adapter
- Tubular pressure gauge
- Temperature sensor with installation kit

S-USI

Spartherm negative pressure switching interface.

S-USI is a safety monitoring device where malfunctions are possible during the parallel operation of ventilation systems and room air sealed fireplaces. The S-USI does not perform a regulating function, it is a safety module. **S-USI safety is DIBt-tested and approved by the competent building authorities (Z85. 1-12).**

In appropriate situations when the ventilation system fails, S-USI prevents the escape of dangerous volumes of flue gas in the room in which the stove is installed. The negative pressure in the connecting tube to the chimney in relation to the ambient space (=room in which installed, or combined air) is monitored constantly while the stove is in use.

If the fireplace is out of use, S-USI remains disabled. A tested flue gas thermostat generates the start signal for wood log fired stoves. This device must only be used in combination with fireplaces approved by Spartherm. S-USI cannot be used for open fireplaces.

Optional: S-USI as flush-mounted solution



RLU approvals

Our room air sealed fireplaces are an additional safety advantage. For an overview of the DIBt-approved models, see the table below.

Fireplaces	Door hinge	DIBt approval No.
Mini S RLU 51-4S	Left	Z-43.12-316
Mini S RLU 51-4S	Right	Z-43.12-316
Mini R1V RLU 51-4S	Left	Z-43.12-316
Mini R1V RLU 51-4S	Right	Z-43.12-316
Mini R1V RLU 57-4S	Left	Z-43.12-316
Mini R1V RLU 57-4S	Right	Z-43.12-316
Mini Z1 RLU 51-4S (7kW)	Left	Z-43.12-316
Mini Z1 RLU 51-4S (7kW)	Right	Z-43.12-316
Mini Z1 RLU 57-4S (7kW)	Left	Z-43.12-316
Mini Z1 RLU 57-41 (7kW)	Right	Z-43.12-316
Varia FD RLU 51-4S	Left	Z-43.12-316
Varia FD RLU 51-4S	Right	Z-43.12-316
Varia 2L RLU 51-4S	Right	Z-43.12-316
Varia 2R RLU 51-4S	Left	Z-43.12-316
Varia 1V S RLU 51-4S	Left	Z-43.12-316
Varia 1V S RLU 51-4S	Right	Z-43.12-316
Varia 1V XL H ₂ O RLU 51-4S	Right	Z-43.11-322
Varia 1V XL H ₂ O RLU 51-4S	Left	Z-43.11-322
Varia 1V XXL H ₂ O RLU 51-4S	Right	Z-43.11-322
Varia 1V XXL H ₂ O RLU 51-4S	Left	Z-43.11-322
Varia 1V XS H ₂ O RLU 51-4S	Right	Z-43.11-322
Varia 1V XS H ₂ O RLU 51-4S	Left	Z-43.11-322
Mini Z1 RLU 51 H ₂ O-4S	Left	Z-43.11-322
Mini Z1 RLU 51 H ₂ O-4S	Right	Z-43.11-322
Mini Z1 RLU 51 H ₂ O XL-4S	Left	Z-43.11-322
Mini Z1 RLU 51 H ₂ O XL-4S	Right	Z-43.11-322

		DIBt approval No.
Speedy 1V 51-4S	Left	Z-43.12-316
Speedy 1V 51-4S	Right	Z-43.12-316
Speedy 1V 57-4S	Left	Z-43.12-316
Speedy 1V 57-4S	Right	Z-43.12-316
Varia 1V 51-4S	Left	Z-43.12-316
Varia 1V 51-4S	Right	Z-43.12-316
Varia 1V 57-4S	Left	Z-43.12-316
Varia 1V 57-4S	Right	Z-43.12-316
Varia AS-4S-2		Approval application filed
Varia ASFD-4S-2		Approval application filed

Stoves selection	
Senso S RLU	Z-43.12-278
Cubo S RLU	Z-43.12-320
Cubo M RLU	Z-43.12-320
Cubo L RLU	Z-43.12-320
Piko S RLU	Z-32.12-320
Piko M RLU	Z-43.12-320
Piko L RLU	Z-43.12-320

Stoves ambiente	
ambiente a1 / a2 / a3 / a4 RLU	Z-43.12-244
S-KI	Z-43.12-159

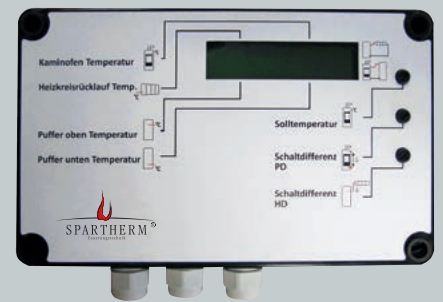
Hydro Control

Integration of water-heating fireplaces made easy.

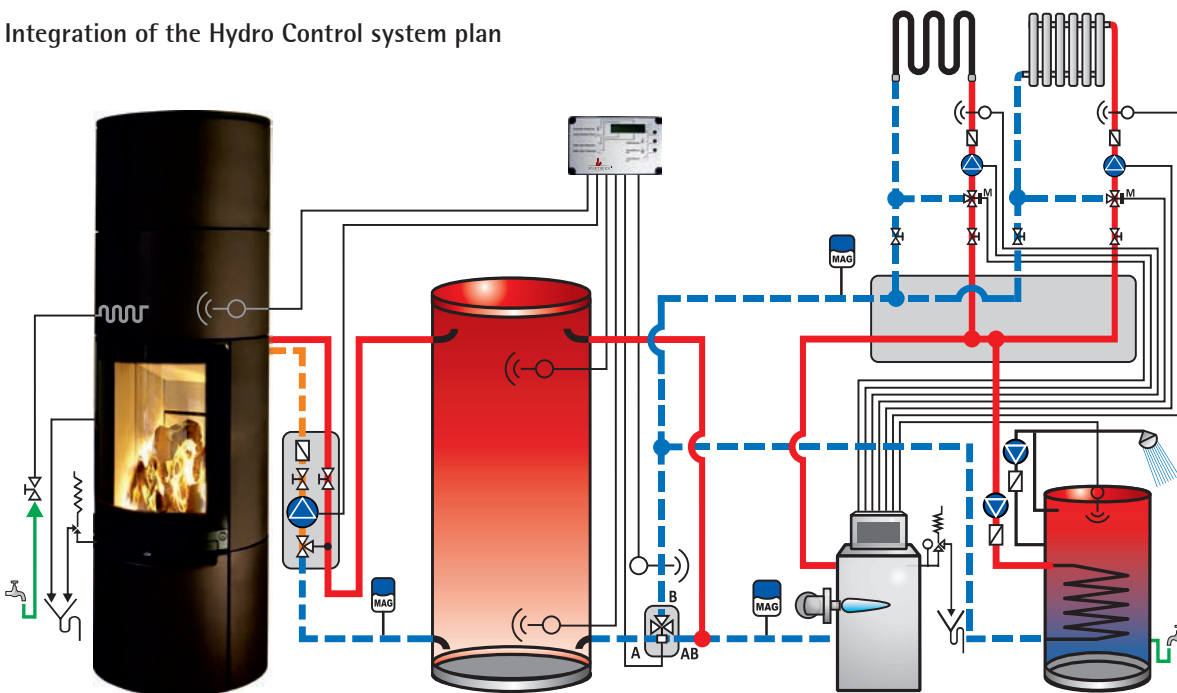
Electronic control for buffer reservoir charging/discharging (bivalent control) for integration of water-heating solid fuel energy producers in hot water heating systems. Controller in surface-mounted box with LC display for temperatures and status.

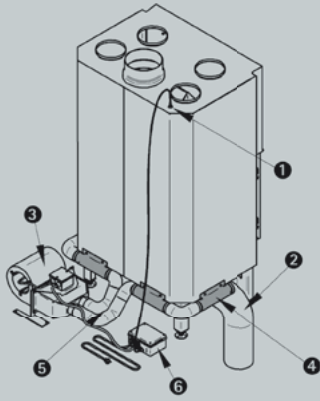
Benefits

- Simple integration of water-heating solid fuel fireplaces in heating systems
- Ideal for service-fitting/expansion of available heating systems
- High system efficiency – maximum reservoir discharge by permanent temperature compensation between heating circulation system and reservoir
- No intervention with the weather-controlled heating system control necessary



Integration of the Hydro Control system plan





S-Vent scope of supply

- 1 flexible aluminium pipe, 5 m
- 1 control unit, incl. handheld transmitter
- 1 air blower with mounting flange
- 2 locking plates
- 4 Injection tubes
- Screws and clamps

S-Vent

Modular forced convection.

- For use with many Spartherm fireplaces
- Flexible installation depending on the conditions on site
- Forced convection connection and external combustion air supply possible
- Natural convection is maintained because the warm air jacket is open downward
- Improves convection air heating output up to 75%
- Automatic turn-on/turn-off with different blower speeds

Warm air can be transported to several rooms, which improves the output of the warm air heating system.

1 Temperature sensor / 2 Separate combustion air / 3 Blower unit / 4 Injection tube max. 4 tubes / 5 Flexible aluminium pipe / 6 Control unit

Retrofitting is not possible.



S-ESAM scope of supply

- Stove insert with pre-assembled drive
- Control box with plug-in connection lines
- Radio remote control unit
- Operation and installation instructions

S-ESAM

Electric sliding door with mechanical drive for 1Vh serial units.

Automatic window lift, remote control (Open-Stop-Close). An external switch can be connected, interface relay makes integration in BUS technical house equipment possible. Integrated freewheel, the closed window can be opened (lifted) manually at any time.

Retrofitting is not possible.

Our fireplaces and stoves have always complied with strictest national and international standards. Just meeting a standard is not SPARTHERM philosophy. We focus on innovation and offer you future-proof combustion technologies.

S-Airbox

The Spartherm system for clean air.

The S-AirBox filters ultrafine particles from the flue gas. It is set up directly on the stove insert. S-AirBox also provides a reheating surface which improves the efficiency and also the convection air volume.

Benefits

- High degree of separation with compact design
- No intervention with the chimney system
- Simple to clean by the user
- No cost for service contract or chimney sweep
- No removal of filter components
- Very safe operation because Airbox is set up directly on the flue gas collector of the fireplace.

This is what you can expect of your Airbox

- Reduction of ultrafine particulate in flue gas by > 60% for rated heat output up to 22kW
- Manual switchover to filter mode by moving the flue throttle
- Temperature-controlled turn-on/turn-off of the filter
- Visual display of the operating status

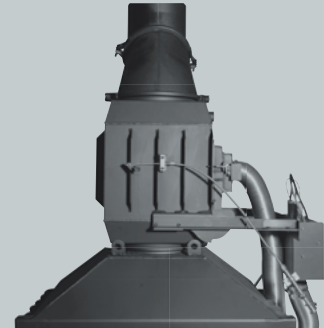
The S-Airbox can be retrofitted.

S-Air 1

Convection air grille design.

- Ventilation grille and lamp in one unit
- Suitable as supply air or recirculating air grille
- Available in three colour finishes (white, graphite, nero) and two sizes (small, medium)
- Attractive heating chamber concept
- Modern design

Optionally available: Illumination set



S-Air 1 scope of supply

- Design grille with splay springs
- Flush mounting frame

Design specifications and design, finish and/or weight data in this booklet can change as design revisions take place.



.....
Simple, intelligent and comfortable heating.

Spartherm Feuerungstechnik GmbH
Maschweg 38 · D-49324 Melle, Germany
Tel. +49 (0) 5422-9441-0 · Fax +49 (0) 5422-9441-14
info@spartherm.com · www.spartherm.com