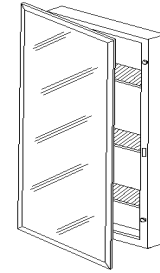


# MODEL 235 SERIES SURFACE MOUNTED FRAMELESS MIRROR MEDICINE CABINETS



Standard builder models - for surface installation -  
Frameless plate mirror swing doors

## FEATURES

- Surface-mounted installation
- Easy to clean, one piece, heavy gauge steel construction
- Plate glass pencil edge mirror
- Rust resistant
- Full piano hinge
- Adjustable shelves  
235P22WH = 2 shelves  
235P26WH = 3 shelves
- Reversible for left-hand or right-hand door opening
- Includes mounting hardware

## TYPICAL SPECIFICATION

Medicine cabinet shall be Broan-NuTone Storage Solutions 235 Series.

Surface mounted medicine cabinet shall be fabricated of heavy gauge steel construction finished in powder coat white paint after forming.

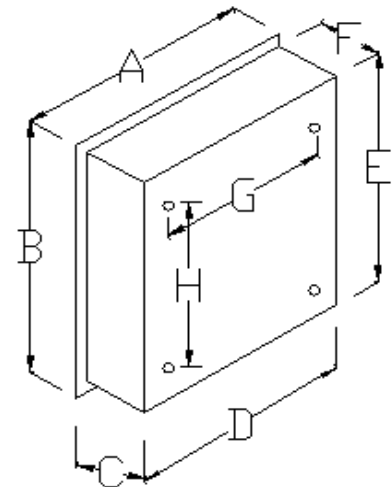
Cabinet shall have full piano hinge and a magnetic door catch.

Each cabinet shall include two, or more, adjustable metal pre-painted shelves.

Cabinet shall be reversible for left-hand or right-hand installation.

Pencil edge plate mirror shall be 3/16" thick.

MODEL NO.	OVERALL SIZE			BODY SIZE				
	A	B	C	D	E	F	G	H
235P22WH	16	22	5	15-1/2	21-1/2	4-1/2	11	11-5/8
235P26WH	16	26	5	15-1/2	25-1/2	4-1/2	11	11-5/8



Broan-NuTone Storage Solutions LP 501 S. Wilhite Street, Cleburne, TX 76031 (1-800-325-8351)

REFERENCE	QTY.	REMARKS	Project
			Location
			Architect
			Engineer
			Contractor
			Submitted by Date