



Control Valves - Fleck, Autotrol, Clack, AquaMatic & Others

Product Index	Page
Fleck 2510 & 1500 Control Valves.....	9-3
Fleck 4650 Hot Water Control Valve.....	9-3
Fleck 5600, 6700 & ProFlo Control Valves.....	9-4
Fleck Designer Covers, By-Pass Valves, Yokes & Residential Flow Controls.....	9-5
Fleck 9000 and 9100 Control Valves and Tank Yokes.....	9-6
Fleck 9500 1-1/2" Control Valves.....	9-7
Fleck 2750 1" Control Valves.....	9-7
Fleck 7000 1-1/4" Control Valves and Accessories.....	9-7
Fleck 2850 1-1/2" Control Valves.....	9-8
Fleck 2900 2" Control Valves.....	9-8
Fleck 3150 2" Control Valves.....	9-8
Fleck 3900 3" Control Valves.....	9-8
Fleck Commercial Flow Controls.....	9-9
Fleck 3200NXT Electronic Valves and Accessories.....	9-10
Fleck Valve Tools and Lubricant.....	9-11
Fleck Powerheads.....	9-11
Fleck Literature and Service Manuals.....	9-11 – 9-12
Autotrol LOGIX Series Control Valves.....	9-13
Autotrol 255 Series Control Valves.....	9-14
Autotrol Performa Series Valves.....	9-14
Autotrol Accessories.....	9-15
Autotrol Literature and Service Manuals.....	9-16
"C-Series" Residential Control Valves.....	9-17
"C-Series" Residential Controls Accessories.....	9-18
Clack WS1.5EE, WS2EE, & WS2H Commercial Control Valves.....	9-19
Clack WS3 Control Valves, Commercial Accessories.....	9-20
AquaMatic Diaphragm Valves, Ejectors, Parts Kits.....	9-21 – 9-23
Erie Controls, Dema Solenoid Valves.....	9-24



[illegible]

9-2

Fleck 2510, 2510 Manual, 1500 & 4650 Control Valves

PART NUMBER

DESCRIPTION

Suggested Retail



FLECK
Pentair Water



FL2510/16-0.0



FL2510/16-SXT-0.0



FL2510MS-0.0
SHOWN W/BYPASS



FL15/16M-0.0



FL46/16-0.0-HW

Fleck 2510 Automatic Valves

Fully-adjustable, 5-cycle controls deliver controlled upflow backwash, downflow brining, slow rinse, rapid rinse, brine refill and service. Noryl valve body. Continuous flow rates up to 19 gpm. Backwash capacity handles up to 16" diameter softeners, 16" diameter filters. Meter- or timer- initiated regeneration. Environmental backplates. Yokes, by-passes, covers and backwash flow control assemblies sold separately.

FLECK 2510 METER VALVES

Meter-initiated regeneration for maximum salt efficiency. Standard meter range: 125 – 2,125 gals. Extended meter range: 625 – 10,625 gals. available. 24 K label provided.

FL2510/16M-0.0	3/4" Meter Valve	\$623.00
FL2510/16M-0.0-ER	3/4" Extended Range Meter Valve	\$646.00
* FL2510/16M-0.0-24V	3/4" Meter Valve, 24 Volt	\$627.00

FLECK 2510 TIMER VALVES

Stocked with 12-day timers, 7-day are available on special order.

FL2510/16-0.0	3/4" Timer Valve	\$460.00
FL2510/16-0.0-24V	3/4" Timer Valve, 24 Volt	\$430.00
FL2510/16F-0.0	3/4" Filter Valve with PVC Inj.	\$475.00
FL2510/16F-0.0-24V	3/4" Filter Valve with PVC Inj., 24 Volt	\$475.00
FL2510F-0.0	3/4" Filter, Flat Cap	\$433.00
FL2510F-0.0-24V	3/4" Filter, Flat Cap, 24 Volt	\$433.00

FLECK 2510 SXT ELECTRONIC VALVES

FL2510/16M-SXT-0.0	3/4" Electronic Meter Valve	\$700.00
FL2510/16-SXT-0.0	3/4" Electronic Timer Valve	\$534.00
FL2510F-SXT-0.0	3/4" Elec. Backwash Valve	\$495.00

Fleck Manual Valves with Cover

Top-mounted manual softener or filter valves. Lever- actuated. Includes injector and plastic cover. Backwash flow control assembly sold separately.

FL2510MS-0.0	3/4" Softener Valve	\$254.00
FL2510MF-0.0	3/4" Filter Valve	\$246.00

Fleck 1500 Valves

Fully-adjustable, 5-cycle controls deliver controlled upflow backwash, downflow brining, slow rinse, rapid rinse, brine refill and service. Solid brass valve body. Continuous flow rates up to 17 gpm. Backwash capacity handles up to 14" diameter softener tanks, 10" diameter for filter applications. Meter or timer initiated regeneration. Valve screws directly in the mineral tank and inlet and outlet are 3/4" FIPT. Available as a top or side mount. Stainless steel backplates. Designer covers and backwash flow control assemblies sold separately.

FL15/16M-0.0	3/4" Meter	\$833.00
FL15/16-0.0	3/4" Timer	\$612.00
FL15F-0.0	3/4" Filter	\$649.00
FL15/16-SM-0.0	3/4" Side Mount Timer	\$631.00
FL15-SMF-0.0	3/4" Side Mount Filter	\$577.00

NOTE: Fleck 1500 Valves come with standard o-rings to fit Structural tanks. Park mineral tanks require an oval o-ring.

Fleck 4650 Automatic Hot Water Valve

The 4650 control combines a rugged, lead-free brass body with the time-tested "L"-style powerhead with a 12-day clock. Handles water temps up to 180. Backwash capacity handles up to 12" diameter tanks. Cover and backwash flow control buttons sold separately. Uses standard 5600 style yokes and bypasses. For hot water use, choose special 5600 hot water bypass or brass yokes only.

FL46/16-0.0-HW	3/4" Timer Valve, Hot Water	\$631.00
----------------	-----------------------------	----------

* Non-Stock Items. See "Terms and Conditions" for details.

Fleck 5600 & 6700XTR Control Valves

PART NUMBER

DESCRIPTION

Suggested Retail



Fleck 5600 Valves

Combines rugged, glass-reinforced Noryl construction with modular design which makes disassembly quick and easy. Seven cycles with adjustable brine flow is efficient and reliable. Flow rates up to 20 gpm. Backwash capacity handles up to 12" diameter softeners, 10" diameter filters. Choose from a wide range of options, including standard or "L" backplates, meter- or timer-initiated regeneration, 3/4" and 1" yokes, by-pass valves, etc. Backwash flow control button sold separately. A 24k label provided with meter valves.



5600 "L" BACK METER



FL56/16M-0.0



5600 SXT CONTROL

FLECK 5600 VALVES WITH "L" BACKPLATES

FL56L/16M-0.0	3/4" "L" Meter Valve	\$547.00
FL56L/16MU-0.0	3/4" "L" Meter Upflow Valve	\$643.00
FL56L/16M-0.0-24V	3/4" "L" Meter Valve, 24 Volt	\$580.00
FL56L/16M-ER-0.0	3/4" "L" Meter Valve, Ext. Range	\$570.00
FL56L/16-0.0	3/4" "L" Time Clock Valve	\$382.00
FL56L/16-0.0-24V	3/4" "L" Time Clock Valve, 24 volt	\$415.00
FL56LF-0.0	3/4" "L" Filter Valve, Flat Cap	\$361.00
FL56LF-0.0-24V	3/4" "L" Filter Valve, Flat Cap, 24 Volt	\$394.00

FLECK 5600 VALVES WITH STANDARD BACKPLATES

FL56/16M-0.0	3/4" Meter Valve	\$547.00
FL56/16M-0.0-24V	3/4" Meter Valve, 24 Volt	\$580.00
FL56/16-0.0	3/4" Time Clock Valve	\$382.00
FL56/16-0.0-24V	3/4" Time Clock Valve, 24 Volt	\$415.00
FL56/16F-0.0	3/4" Filter Valve with PVC Inj.	\$394.00
FL56/16F-0.0-24V	3/4" Filter Valve with PVC Inj., 24 Volt	\$429.00
FL56F-0.0	3/4" Filter Valve, Flat Cap	\$378.00
FL56F-0.0-24V	3/4" Filter Valve, Flat Cap, 24 Volt	\$412.00

FLECK 5600 SXT ELECTRONIC VALVES

FL56/16M-SXT-0.0	3/4" Electronic Meter Valve	\$590.00
FL56/16M-SXT-0.0-SF	3/4" Electronic Meter Valve-SoftFlo	\$590.00
FL56/16MU-SXT-0.0	3/4" Electronic Meter Upflow Valve	\$687.00
FL56/16-SXT-0.0	3/4" Electronic Time Clock Valve	\$429.00
FL56/16-SXT-0.0-PE	3/4" Elec. Time Clock w/Chlorine Resis. Seals	\$486.00
FL56F-SXT-0.0	3/4" Elec. Filter Valve, Flat Cap	\$427.00

Fleck 6700XTR Valves

The residential 6700XTR offers a two-line, sixteen character LCD backlit display for easy entering of master, diagnostic, and user programming. No need to memorize codes or letters to program or read screens! Time of day is maintained during power failures, offering peace of mind and steady, treated water as needed. The polycarbonate cover is UV-stable, flame retardant, and protects against moisture, dust, and dirt.

FL67/16M-XTR-0.0	3/4" Electronic Meter Valve	\$719.00
FL67/16MU-XTR-0.0	3/4" Electronic Meter Upflow Valve	\$801.00

Fleck ProFlo SXT Valves

The Fleck ProFlo SXT features a fully adjustable, 5-cycle control delivering upflow backwash, downflow brining, slow rinse, rapid rinse, brine refill, and downflow service. Easy programming options increase efficiency, saves salt and water. Strong, durable valve body, with a weather-resistant enclosure. Available in demand regeneration or time clock versions with capabilities of regenerating up to 16" diameter softeners and filter. Timed brine refill with soft water. Super capacitor for keeping time of day during power outage.

FL50/16MU-SXT-0.0	3/4" Meter Valve, Upflow	\$700.00
FL50/16M-SXT-0.0	3/4" Meter Valve	\$667.00
FL50F-SXT-0.0	3/4" Filter Valve	\$473.00



FL67/16M-XTR-0.0



FL50/16M-SXT-0.0

* Non-Stock Items. See "Terms and Conditions" for details.

Fax Nelsen in OH - 888.544.8780, AZ - 602.442.0447 or FL - 813.712.2274

All prices and products subject to change without notice. ©2011 Nelsen Corporation



Fleck Control Valve Accessories

PART NUMBER

DESCRIPTION

Suggested Retail



FLEC-DG

Fleck Environmental Covers for Environmental Backplates

For use with our Fleck 2510, 1500, 2750, 2850 and 2900 control valves.

FLEC-DG	Environmental Cover, Dark Grey	\$39.40
---------	--------------------------------	---------



FL25DC-DG

Fleck Designer Covers For Stainless Steel Backplates

For use with the Fleck 9100 and 9000 mechanical meter control valves and older-style valves with stainless steel backplates.

FL25DC-DG	Dark Grey	\$42.80
FL25DC-B/B	Blue	\$42.80
FL25DC-LG/DG	Light Grey/Dark Grey	\$42.80
FL25DC-A/A	Almond	\$42.80



FL50PY

Fleck Covers For 5600 Valves

FL56DC-DG	"L-Back" Dark Grey	\$23.20
FL56C-G	Standard, Dark Grey	\$9.90
FL56DC-SB	"L-Back" Smoke Black	\$124.00



FL50P-90AC

Fleck Covers For 9000 and 9100 SXT Valves

FL91/90SXT-DG	Designer Cover w/Window, Dark Grey	\$43.10
---------------	------------------------------------	---------



FL56-07SY

Fleck By-Pass Valves and Yokes

FL50-07PY	Yoke, 3/4" Plastic MIPT	\$12.30
FL50P-90AC	Yoke, 3/4" Plastic MIPT, 90°	\$14.15
FL50-10PY	Yoke, 1" Plastic MIPT	\$12.30
FL56-07Y	Yoke, 3/4" Stainless FIPT	\$36.70
FL56-10Y	Yoke, 1" Stainless FIPT	\$61.50
FL56-12YT	Yoke, 1-1/4" Brass FIPT	\$66.25
FL56-12CT	Yoke, 1-1/4" Copper Tube	\$66.25
FL56-07SY	Sweat Yoke, 3/4"	\$81.00
FL56-07SAY	Sweat Angle Yoke, 3/4"	\$81.00
FL50P	Plastic By-Pass Base Only	\$43.10
FL56-07B	By-Pass, 3/4" FIPT Stainless Steel	\$81.00
FL56-10B	By-Pass, 1" FIPT Stainless Steel	\$89.75



FL56-07Y



FL56-07B

Fleck Residential Backwash Flow Control Assemblies

Flow control assemblies include flow control housing and flow button. These assemblies are used on 2510, 1500 and ProFlo control valves. Indicate GPM.

FL25BW-*. *	Backwash Flow Control Assm.	\$15.95
-------------	-----------------------------	---------

Flow control housing less flow button for 7000 control valves. Indicate GPM.

FL70BW-0.0-07	3/4" Flow Control Elbow Housing	\$7.00
FL70BW-0.0-10	1" Straight Flow Control Housing	\$15.90



FL70BW-0.0-07



FL25BW-*. *

Fleck Residential Backwash Flow Control Buttons

Flow control buttons are used on 5600, 6600, 6700, 7000 and 9000 control valves. Indicate GPM when ordering.

BUTTON-*. *	Backwash Flow Control Button	\$2.90
-------------	------------------------------	--------



FLOW BUTTONS

* Non-Stock Items. See "Terms and Conditions" for details.

Fleck 9000 & 9100 Control Valves

PART NUMBER

DESCRIPTION

Suggested Retail



FL90/16M-0.0

Fleck 9000 Meter Valves Less Tank Yokes

Perfect for light commercial/heavy residential systems that require twin-tank conditioning capabilities. Five-cycle control delivers controlled upflow backwash, downflow brining, slow rinse, rapid rinse and timed brine refill, ALL performed with conditioned water. The most salt-efficient valve available because you don't need to program in a reserve.

Regenerates immediately when needed, as often as every 90 minutes if required.

Continuous flow rates up to 18 gpm on 3/4" valves, 21 gpm on 1" valves. Handles up to 16" softeners, up to 12" filters depending on filter media. Covers, backwash flow control buttons and tank yokes sold separately.

FL90/16M-0.0	3/4" Meter	\$1,190.00
FL90/16M-0.0-24V	3/4" Meter, 24 Volt	\$1,215.00
FL90/16M-1-0.0	1" Meter	\$1,699.00
FL90/16M-1-0.0-24v	1" Meter, 24 Volt	\$1,725.00
FL90/16M-SXT-0.0	3/4" Meter, Electronic	\$1,389.00
FL90N/16M-0.0	3/4" Meter, Plated	\$1,246.00



9000 1" CONTROL VALVE

Tank Yokes For 9000 Meter Valves

For connecting 9000 twin tanks together.

FL90Y	Yoke Only, 1" Solder (Each)	\$68.25
-------	-----------------------------	---------

BRASS AND COPPER

FL90Y-6	6" Brass/Copper Yoke	\$87.75
FL90Y-8.5	8-1/2", 6-12" Tanks	\$89.75
FL90Y-10.5	10-1/2", 14" Tanks	\$95.00
FL90Y-12.5	12-1/2", 16" Tanks	\$98.50

NICKEL PLATED

FL90NY-6	6" Plated Yoke	\$96.00
FL90NY-8.5	8-1/2", 6-12" Tanks	\$98.00
FL90NY-10.5	10-1/2", 14" Tanks	\$103.00
FL90NY-12.5	12-1/2", 16" Tanks	\$108.00



9000 10-1/2" TANK YOKE

Fleck 9100 Meter Valves less Tank Yoke

The 9100 incorporates the time-tested design of the 9000 in a rugged, glass-reinforced Noryl, twin-tank control valve. Perfect for light commercial/heavy residential systems that require twin-tank conditioning capabilities. Six-cycle control regenerates with soft water immediately when needed keeping the system clean for optimum operating efficiency.

Regenerates as often as every 90 minutes if required. Continuous flow rates up to 18 gpm on 3/4" valves, 21 gpm on 1" valves. Handles up to 16" softeners, up to 12" filters depending on filter media. Covers, backwash flow buttons and tank yokes sold separately.



FL91/16M-0.0

FL91/16M-0.0	3/4" Meter	\$773.00
FL91/16M-0.0-24V	3/4" Meter, 24 Volt	\$793.00
FL91/16M-SXT-0.0	3/4" Meter, Electronic	\$1,051.00
FL91/16M-1-0.0	1" Meter	\$1,179.00

Tanks Yokes For 9100 Meter Valves

For connecting 9100 twin tanks together.

FL91Y-9	Yoke Only, 6" - 9" Tanks	\$43.50
FL91Y-12	Yoke Only, 10" - 12" Tanks	\$43.50
FL91Y-16	Yoke Only, 13" Tanks and Larger	\$51.50



9100 TANK YOKE

* Non-Stock Items. See "Terms and Conditions" for details.

Fax Nelsen in OH - 888.544.8780, AZ - 602.442.0447 or FL - 813.712.2274

All prices and products subject to change without notice. ©2011 Nelsen Corporation



Fleck 9500, 2750 & 7000 Control Valves

PART NUMBER

DESCRIPTION

Suggested Retail



9500 SXT CONTROL VALVE

Fleck 9500 1-1/2" Meter Valves Less Covers and D.L.F.C.

The commercial version of the 9000 valve. Twin-tank design means that soft water is available at all times. Five-cycle control delivers controlled upflow backwash, downflow brining, slow rinse, rapid rinse and timed brine refill, are all performed with conditioned water. The most salt-efficient valve available because you don't need to program in a reserve. Regenerates immediately when needed, as often as every 90 minutes if required. Continuous flow rates up to 41 gpm, 49 gpm peak. Handles softeners up to 24" in diameter, up to 16" filters depending on filter media. Prices include soldered tank yoke for 14" and 16" tanks. Order designer cover separately.

FL950/16M-0.0	1-1/2" with 1-1/2" Meter	\$4,242.00
FL950/17M-3C-0.0	1-1/2" with 1-1/2" Meter, 3C Inj.	\$4,283.00
FL950/17M-4C-0.0	1-1/2" with 1-1/2" Meter, 4C Inj.	\$4,283.00
* FL950/17M-4C-0.0-SXT	SXT with Electronic 1-1/2" Meter, 4C Inj.	\$3,376.00
* FL950/17M-4C-0.0-XT	XT Time Clock w/Elec. 1-1/2" Meter, 4C Inj.	\$3,764.00



2750 TIME CLOCK VALVE

Fleck 2750 1" Valves Less Covers and D.L.F.C.

Suitable for large residential/light commercial applications. Flow rates up to 26 gpm. Backwash capacity handles up to 24" softeners, 21" filters. Fully-adjustable cycles. One-inch piping. Environmental backplates.

FL275/16-0.0	1" Time Clock with 1600 B.V.	\$751.00
FL275/16M-3/4-0.0	3/4" Meter with 1600 B.V.	\$967.00
FL275/16M-0.0	1" Meter with 1600 B.V.	\$1,961.00
FL275/17-0.0	1" Time Clock with 1700 B.V.	\$820.00
FL275/17M-0.0	1" Meter with 1700 B.V.	\$5,075.00
* FL275/17M-0.0-XT	XT Time Clock w/1" Elec Meter & 1700 Brine	\$1,368.00
FL275F-0.0	1" Filter, Flat Cap	\$701.00



7000 CONTROL VALVE

Fleck 7000 1-1/4" Valves Less Covers and D.L.F.C.

The new 7000 control valve offers the highest service and backwash flows available for residential and light commercial applications. Manufactured from a durable fiber reinforced polymer and features a series of optional high flow accessories. Standard flow rates of 27.7 gpm with a maximum backwash rate of 7.4 gpm and with a high flow piston a flow rate of 35.8 gpm and maximum backwash rate of 15.8 gpm. Plumbing connections in 1" and 1-1/4" NPT PVC.

FL70/16-0.0	1-1/4" Time Clock	\$470.00
FL70/16M-0.0	1-1/4" with 1-1/4" Meter	\$557.00
FL70F-0.0	1" Filter, Flat Cap	\$446.00
FL70/16-0.0-HF	1-1/4" Time Clock, High Flow	\$544.00
FL70/16M-0.0-HF	1-1/4" with 1-1/4" Meter, High Flow	\$631.00



FL70P

7000 VALVE ACCESSORIES

Connectors are priced singularly, sold in pairs only.

FL70P	Plastic By-Pass Base Only, 7000 Valve	\$59.75
FL70-E90-SINGLE	90 Degree Elbows, Each	\$45.90
FL70-07PVC-SINGLE	Connectors, 3/4" NPT Plastic QC, Each	\$5.50
FL70-10PVC-SINGLE	Connectors, 1" NPT Plastic QC, Each	\$3.30
FL70-12PVC-SINGLE	Connectors, 1-1/4" NPT Plastic QC, Each	\$3.30
FL70-0710CT-SINGLE	Connectors, 3/4" x 1" Brass Sweat, Each	\$60.50
FL70-1012CT-SINGLE	Connectors, 1 - 1-1/4" Brass Sweat, Each	\$35.40
FL70-1215CT-SINGLE	Connectors, 1-1/4 - 1-1/2" Brass Sweat, Each	\$35.40
FL70C-G	Fleck 7000 Cover, Grey	\$50.20



FL70-E90



FL70-1012CT

FL70-10PVC

* Non-Stock Items. See "Terms and Conditions" for details.

Fleck 2850, 2900, 3150 & 3900 Control Valves

PART NUMBER

DESCRIPTION

Suggested Retail



FL285/17M-1.5-3C

Fleck 2850 1-1/2" Valves Less Covers and D.L.F.C.

A 1-1/2" top mounted control valve ideal for smaller-size commercial/industrial applications. Fully-adjustable, 5-cycle regeneration. Solid brass valve body. Continuous flow rate of 51 gpm with up to a 49 gpm backwash rate. Up to 30" softener tanks, 24" filters. Timer- or meter-initiated regeneration. Environmental backplates.

FL285/16-0.0	1-1/2" Time Clock	\$1,279.00
* FL285/16M-1-0.0	1-1/2" w/1" Meter	\$2,489.00
* FL285/16M-1.5-0.0	1-1/2" w/1-1/2" Meter	\$2,680.00
FL285/17-3C-0.0	1-1/2" Time Clock w/3C Inj.	\$1,346.00
FL285/17-4C-0.0	1-1/2" Time Clock w/4C Inj.	\$1,346.00
FL285/17M-1-0.0	1-1/2" with 1" Meter	\$2,557.00
FL285/17M-1.5-3C	1-1/2" with 1-1/2" Meter & 3C Inj.	\$2,748.00
FL285/17M-1.5-4C	1-1/2" with 1-1/2" Meter & 4C Inj.	\$2,748.00
FL285/17M-1.5-3C-XT	XT Time Clock w/Elec 1-1/2" Meter & 3C Inj.	\$1,890.00
FL285F-0.0	1-1/2" Filter w/Cover	\$1,229.00



FL29/17-3C-0.0

Fleck 2900 2" Valves w/Covers Less D.L.F.C.

Incorporates two time-tested, hydraulically-balanced pistons to independently pilot service flow and regeneration. Suitable for use with single or multiple tank systems. Continuous flow rates up to 106 gpm. Solid brass body. Up to 30" softener tanks, 16" iron filters or 21" carbon filters.

FL29/16-0.0	2" Time Clock	\$1,803.00
FL29/16M-0.0	2" w/2" Meter	\$3,326.00
FL29/17-3C-0.0	2" Time Clock w/3C Injector	\$1,867.00
FL29/17-4C-0.0	2" Time Clock w/4C Injector	\$1,867.00
FL29/17M-3C-0.0	2" with 2" Meter	\$3,390.00
FL29/17M-4C-0.0	2" with 2" Meter	\$3,390.00
FL29/17M-4C-0.0-XT	XT Time Clock w/2" Electronic Meter	\$3,638.00



FL315/18-0.0

Fleck 3150 2" Valves w/Covers Less D.L.F.C.

Fully-adjustable, 5-cycle control with versatile top or side mounting. Backwash capacity up to 42" tanks with top mount or 60" tanks with side mount. Solid brass construction.

FL315/18-0.0	2" Time Clock	\$3,005.00
FL315/18M-2-0.0	2" w/2" Meter	\$4,483.00
FL315/18-SM-0.0	2" Side Mount Time Clock	\$2,892.00
FL315/18M-2SM-0.0	2" Side Mount w/2" Meter	\$4,370.00
FL315F-0.0	2" Filter	\$2,820.00
FL315F-SM-0.0	2" Side Mount Filter	\$2,707.00



FL39/18-0.0

Fleck 3900 3" Valves w/Covers Less D.L.F.C.

Designed for single or multi-tank installations. Continuous flow rates up to 210 gpm, peak flow rates up to 271 gpm. Backwash rates up to 90 gpm. Use on softener tanks up to 60" diameter, filters up to 42". Sidemount configured valve does not include the sidemount adapter, order separately.

FL39/18-0.0	3" Time Clock	\$6,090.00
FL39/18M-3-0.0	3" w/3" Meter	\$8,768.00
* FL39/18-SM-0.0	3" Side Mount Time Clock	\$5,799.00
* FL39/18M-3SM-0.0	3" Side Mount w/3" Meter	\$8,478.00
* FL39F-0.0	3" Filter	\$5,906.00
* FL39F-SM-0.0	3" Side Mount Filter	\$5,616.00

* Non-Stock Items. See "Terms and Conditions" for details.

PART NUMBER

DESCRIPTION

Suggested Retail



FC07

Flow Controls

These simple to install valves provide an easy, efficient way to control water flow. MIPT threads, brass construction. Other sizes for 3/8" through 6", .25 through 280 gallons per minute are available. Specify flow rate 2 – 10 gpm.

FC07-*. *	3/4" Flow Control, MIPT x MIPT	\$29.10
-----------	--------------------------------	---------

Stainless Steel Flow Controls

Stainless steel flow control available in 3/4" and 1" with FIPT threads. Flow rates from 5 to 20 gallons per minute. Provides an accurate and reliable liquid flow control between 30 and 120 psi.



SSFC07-7.0

SSFC07-5.0	3/4" Flow Control, FIPTx FIPT	\$53.00
SSFC07-7.0	3/4" Flow Control, FIPTx FIPT	\$53.00
SSFC07-8.0	3/4" Flow Control, FIPTx FIPT	\$53.00
SSFC07-10.0	3/4" Flow Control, FIPTx FIPT	\$53.00

SSFC10-5.0	1" Flow Control, FIPTx FIPT	\$78.25
SSFC10-7.0	1" Flow Control, FIPTx FIPT	\$78.25
SSFC10-8.0	1" Flow Control, FIPTx FIPT	\$78.25
SSFC10-10.0	1" Flow Control, FIPTx FIPT	\$78.25
SSFC10-12.0	1" Flow Control, FIPTx FIPT	\$80.00
SSFC10-15.0	1" Flow Control, FIPTx FIPT	\$80.00
SSFC10-20.0	1" Flow Control, FIPTx FIPT	\$80.00

Fleck Backwash Flow Controls

FLECK BRASS FLOW CONTROLS FOR 2750 VALVES

Available with 1.0 to 10.0 gpm flow washers. Specify correct washer when ordering.

FL60365-**. *	3/4"x1/2", 2-10 gpm	\$28.20
---------------	---------------------	---------

FLECK BRASS FLOW CONTROL

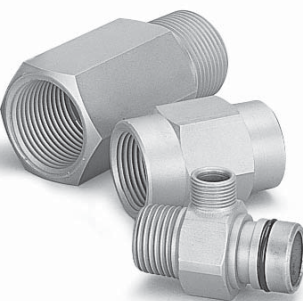
FL60701-25	1" 25.0 gpm F x F	\$102.00
------------	-------------------	----------

Commercial 2" Backwash Flow Controls for Fleck Valves

For Fleck valves with 2" drain line opening.

DLFC20-00	2" Flow Control Housing (L/Buttons)	\$205.00
-----------	-------------------------------------	----------

BUTTON-10.0	10 gpm Flow Button	\$4.95
BUTTON -12.0	12 gpm Flow Button	\$6.85
BUTTON-15.0	15 gpm Flow Button	\$6.85
BUTTON -20.0	20 gpm Flow Button	\$6.85
BUTTON -25.0	25 gpm Flow Button	\$6.85



FLOW CONTROLS



DLFC20-00

* Non-Stock Items. See "Terms and Conditions" for details.

Fleck 3200NXT Controls & Accessories

PART NUMBER

DESCRIPTION

Suggested Retail



3200NXT
CONTROLLER



3214NXT
CONTROLLER



2900 NXT CONTROL VALVE



3900 NXT CONTROL VALVE



FL3200-2-ELEC



FL3200-2-ELEC-PL

Fleck 3200NXT Electronic Valves

The Fleck 3200NXT Network Controller uses on-board communications capabilities to link multiple valves via standard off-the-shelf CAT3, CAT5 or better cables for a variety of system types. Features include an intuitive 2x16 full text backlit LCD display, three programming levels, user friendly interface, capacitor power backup and a host of other options.

Additionally, using a simple programming sequence, any of the following system types may be configured in the field.

SYSTEM 4 TIME CLOCK – Single tank, no meter. Choose one control valve.

SYSTEM 4 METER DELAYED – Single tank with one meter. Delayed regeneration. Choose one control valve, one electronic meter and one meter cable.

SYSTEM 4 METER IMMEDIATE – Single tank with one meter. Immediate regeneration. Choose one control valve, one electronic meter and one meter cable.

SYSTEM 5 INTERLOCK – Two, three or four valves with one meter on each valve. Interlock regeneration – when one valve goes into regeneration, the valve will lock out the remaining valves until valve is finished regenerating. Choose two, three or four valves, an equal number of electronic meters and meter cables.

SYSTEM 6 SERIES – Two, three or four valves with one remote electronic meter. Series regeneration – when the lead valve goes into regeneration, then the next valve inline will follow in sequence based on the amount of valves in system. Choose two, three or four valves, one electronic meter and one meter cable.

SYSTEM 7 ALTERNATING – Two valves with one remote electronic meter. Alternating regeneration – one valve in stand by, one in service. Choose two valves, one electronic meter and one meter cable.

SYSTEM 9 ALTERNATING – Two, three or four valves with one meter on each valve. Alternating regeneration – one valve in stand by the remaining in service. Choose two, three or four valves, an equal number of electronic meters and meter cables.

SYSTEM 14 – The Demand Flow system can be programmed to bring multiple units to the Service position and back to Stand-by based upon system flow demands.

Fleck 3200NXT Electronic Commercial Control Valves

All control valves include a communication phone cable kit and “no hard water bypass” piston except where noted. A “hard water bypass” piston may be required for System 4 applications.

FL29/17-3C-0.0-NXT	2" Valve w/3C Inj. 1700 B.V.	\$2,212.00
FL29/17-4C-0.0-NXT	2" Valve w/4C Inj. 1700 B.V.	\$2,212.00
FL29/17-HWBP-NXT	2" Valve w/4C Inj. - Hard Water Bypass	\$2,212.00
FL29/17-4C-0.0-NXT14	2" Valve w/4C Inj. - 3214 NXT	\$2,212.00
FL39/18-0.0-NXT	3" Valve w/1800 B.V.	\$6,412.00

Fleck Brass 3200NXT Electronic Water Meters & Cables

FL3200-1-ELEC	1" Electronic Meter	\$1,040.00
FL3200-2-ELEC	2" Electronic Meter	\$1,372.00
FL3200-3-ELEC	3" Electronic Meter	\$2,169.00
FL3200CABLE-35	35" Elec Meter Cable	\$37.60
FL3200CABLE-96	96" (8 ft) Elec Meter Cable	\$41.90
FL3200CABLE-300	300" (25 ft) Elec Mtr Cable	\$89.50

Fleck Plastic 3200NXT Electronic Water Meter

FL3200-2-ELEC-PL	2" Plastic Body Electronic Meter	\$701.00
------------------	----------------------------------	----------

Fleck Remote Reset Water Meters

FL275-1RM	1" .7 to 40 gpm	\$1,892.00
FL285-1.5RM	1-1/2" 1.50 to 75 gpm	\$2,115.00
FL310-2RM	2" 3 to 150 gpm	\$1,990.00
FL390-3RM	3" 7 to 300 gpm	\$3,082.00

* Non-Stock Items. See “Terms and Conditions” for details.

Fleck Tools, Dow #7, Fleck Powerheads, Fleck Literature



FLECK
Pentair Water

PART NUMBER

DESCRIPTION

Suggested Retail

Fleck Valve Tools

Specialized tools for repairing Fleck valves.

FL11098	2500 Seal Stuffer
FL13061	2500 Seal Puller
FL12682	2900, 3100, 3150 Puller
FL12683	2900, 3100, 3150 Stuffer
FL12763	5600, 9000 Stuffer
FL16516	2850/9500 Stuffer Assm.
FL17623	2850/9500 Puller Tool Assm.
FL60460	Meter Checker Kit
FL12874	Seal Hook
FL13759	Fleck DLFC Retainer Tool

\$88.00
\$100.00
\$434.00
\$434.00
\$141.00
\$359.00
\$359.00
\$21.70
\$24.30
\$14.00



FL11098



FL13061



FL60460



DOW-7



FL56M-PH



FL90-M-PH

Dow Corning #7 Release Agent

Petroleum base lubricants will cause swelling of o-rings and seals. The use of other lubricants may attack plastic Noryl. It is recommended that Dow Corning silicone grease be used as a lubricant for all Fleck control valves.

DOW-7	Dow #7 Release Compound, 5.3 oz. Tubes
-------	--

\$33.90

Fleck Powerheads

FL2510M-PH	Powerhead, 2510 Meter
FL2510T-PH	Powerhead, 2510 Timer
FL2510M-EPH	Powerhead, 2510 Meter Environmental Backplate
FL2510T-EPH	Powerhead, 2510 Timer Environmental Backplate
FL2510T-EPH-24V	Powerhead, 2510 Timer Env Backplate, 24 Volt
FL56M-PH	Powerhead, 5600 Meter
FL56T-PH	Powerhead, 5600 Timer
FL56F-PH	Powerhead, 5600 Filter
FL56LM-PH	Powerhead, 5600 L Meter
FL56LT-PH	Powerhead, 5600 L Timer
FL56LF-PH	Powerhead, 5600 L Filter
FL56SXT-PH	Powerhead, 5600 Electronic
FL50M-PH	Powerhead, 5000 Meter Kit, Incl. Turbine
FL50FT-PH	Powerhead, 5000 Timer
FL67M-PH	Powerhead, 6700 Electronic
FL100E-PH	Powerhead, 100E Meter
FL90M-PH	Powerhead, 9000 Meter
FL91M-PH	Powerhead, 9100 Meter

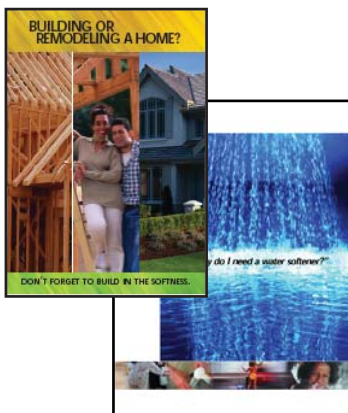
\$247.00
\$247.00
\$247.00
\$247.00
\$247.00
\$200.00
\$200.00
\$200.00
\$200.00
\$200.00
\$200.00
\$354.00
\$292.00
\$292.00
\$469.00
\$444.00
\$474.00
\$400.00

Fleck Controls

LITERATURE SHEETS

FL40089	Consumer Brochure, 2510
FL40710	Pentair Posters-Set of Three
FLECK-CB	Fleck Consumer Brochure
FLECK-CV	Control Valve Brochure
FLECK-RPL	Residential Product Line Broc.
FLECK-CPL	Commercial Product Line Broc.
FL40826	Residential Brochure, 9100
FL40827	Commercial Brochure, 9100
FL40828	Consumer Brochure, 7000
FL40829	Consumer Brochure, 5600
FL40832	Builder Brochure

\$2.50
\$85.00
\$3.80
\$
\$3.80
\$1.90
\$2.50
\$2.50
\$2.50
\$2.50
\$4.20



* Non-Stock Items. See "Terms and Conditions" for details.



Call Nelsen Toll-Free in OH - 800.362.9686, AZ - 866.445.4299 or FL - 866.712.6796

All prices and products subject to change without notice. ©2011 Nelsen Corporation

Fleck Literature & Service Manuals

PART NUMBER

DESCRIPTION

Suggested Retail



SPECIFICATION SHEETS

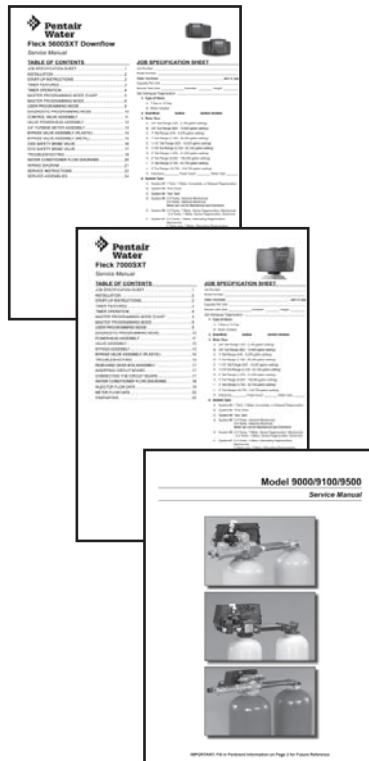
Features and specifications on individual Fleck Valves.

FL2510-SP	Spec. Sheet, 2510	\$1.90
FL4650HW-SP	Spec. Sheet, 4650 Hot Water	\$1.90
FL5000-SP	Spec. Sheet, ProFlo Downflow	\$1.90
FL5600-SP	Spec. Sheet, 5600 Time Clock	\$1.90
FL5600SXT-SP	Spec. Sheet, 5600 SXT	\$1.90
FL100-SP	Spec. Sheet, TwinFlo 100	\$1.90
FL9000-SP	Spec. Sheet, 9000	\$1.90
FL9100-SP	Spec. Sheet, 9100	\$1.90
FL9500-SP	Spec. Sheet, 9500	\$1.90
FL2750-SP	Spec. Sheet, 2750	\$1.90
FL7000-SP	Spec. Sheet, 7000	\$1.90
FL2850-SP	Spec. Sheet, 2850	\$1.90
FL2900-SP	Spec. Sheet, 2900	\$1.90
FL3150-SP	Spec. Sheet, 3150	\$1.90
FL3900-SP	Spec. Sheet, 3900	\$1.90
FLMETER-SP	Spec. Sheet, Meters	\$1.90
FLSOFTFLO-SP	Spec. Sheet, SoftFlo Cabinet	\$1.90
FL3200NXT-SP	Spec. Sheet, 3200 NXT Controller	\$1.90
FL3214NXT-SP	Spec. Sheet, 3214 NXT Controller	\$1.90

SERVICE MANUALS

Installation instructions, parts lists, troubleshooting guides, etc.

FL2510-SM	Service Manual, 2510	\$4.45
FL15/25M-SM	Service Manual, 1500/2500 Meter	\$4.45
FL15/25T-SM	Service Manual, 1500/2500 Timer	\$4.45
FL1500MAN-SM	Service Manual, 1500/2500 Man.	\$4.45
FL4650HW-SM	Service Manual, 4650 Hot Water	\$4.45
FL5600-SM	Service Manual, 5600 Timer and Meter	\$4.45
FL5600SXT-SM	Service Manual, 5600 SXT	\$4.45
FL6600D-SM	Service Manual, 6600 Downflow	\$4.45
FL6600U-SM	Service Manual, 6600 Upflow	\$4.45
FL6700D-SM	Service Manual, 6700 Downflow	\$4.45
FL6700U-SM	Service Manual, 6700 Upflow	\$4.45
FL5000D-SM	Service Manual, 5000 Downflow	\$4.45
FL5000U-SM	Service Manual, 5000 Upflow	\$4.45
FL100E-SM	Service Manual, TwinFlo 100E	\$4.45
FL8500-SM	Service Manual, 8500	\$4.45
FL90/91/95-SM	Service Manual, 9000	\$4.45
FL2750-SM	Service Manual, 2750	\$4.45
FL7000-SM	Service Manual, 2850	\$4.45
FL2850-SM	Service Manual, 2850	\$4.45
FL2900-SM	Service Manual, 2900	\$4.45
FL2930-SM	Service Manual, 2930	\$4.45
FL3130-SM	Service Manual, 3130	\$4.45
FL3900-SM	Service Manual, 3900	\$4.45
FL3150-SM	Service Manual, 3150	\$4.45
FLMETER-SM	Service Manual, Remote Meters	\$4.45
FL3200NT-SM	Service Manual, 3200 NT Controller	\$4.45



* Non-Stock Items. See "Terms and Conditions" for details.

Fax Nelsen in OH - 888.544.8780, AZ - 602.442.0447 or FL - 813.712.2274

All prices and products subject to change without notice. ©2011 Nelsen Corporation





25740-H00-LOG



PERFORMA WITH LOGIX CONTROLLER



Autotrol Logix Series Controlled Valves

The Logix Controller is unrivaled in simplicity and is easier to program than any other electronic controller on the market today. The Logix Controller is factory-programmed with complete salt tables and operational parameters. The resin volume is set, then only the time of day, day of the week, hardness and the salt amount needs to be set. 12 Volt AC Adapter.

The Logix 740 time clock – This simple time clock controller gives the installer the option of a 7-day (day of the week) or up to a 99-day regeneration frequency setting. The 740 can also be used for either a softener or filter application (with adjustable backwash time). Includes a remote regeneration signal input. This controller is great for residential and light commercial applications up to 3 ft3 of resin.

The Logix 742 time clock – This control has been enhanced for C&I applications. The 742 offers fully-programmable cycle times, salt setting in 1-pound increments, as well as the Maintenance Interval™ feature. This controller will work on all GE Water Technologies valves from the three quarter-inch 255 all the way up to the six inch AquaMatic valve-nest system.

The Logix 760 demand controller – This economy model demand control will set a new standard for simple and efficient controllers. The 760 includes single programming, with a 28-day variable reserve feature and the ability to change the time of regeneration. This cost-effective controller is a great for residential and light commercial applications up to 3 ft3 of resin.

The Logix 762 demand controller – This control has been enhanced for C&I applications. The 762 offers fully-programmable cycle times, salt setting in 1-pound increments, as well as the Maintenance Interval™ feature. This controller will work on all GE Water Technologies valves from the three quarter-inch 255 all the way up to the six inch AquaMatic valve-nest system.

**** Order Backwash Control separately.

Autotrol 255 Valves w/Logix Controllers

25740-H00-LOG	255 Valve w/740 Time Clock	\$388.00
25742-H00-LOG	255 Valve w/742 Enhanced Time Clock	\$437.00
25760-H00-LOG	255 Valve w/760 Demand Control	\$562.00
25762-H00-LOG	255 Valve w/762 Enhanced Demand Control	\$613.00

Autotrol 268 Performa Valves w/Logix Controllers

26874-J00-LOG	268 Performa w/740 Time Clock	\$411.00
268742-J00-LOG	268 Performa w/742 Enhanced Time Clock	\$461.00
268760-J00-LOG	268 Performa w/760 Demand Control	\$630.00
268762-J00-LOG	268 Performa w/762 Enhanced Demand Control	\$681.00

Autotrol 263 Performa Filter Valve w/Logix Controller

263740F-00-LOG	263 Filter w/740F Time Clock	\$427.00
263742F-00-LOG	263 Filter w/742F Enhanced Time Clock	\$478.00

Autotrol 268 Performa FA Filter Valve w/Logix Controller

268FA74-J00-LOG	268FA Performa Filter w/740 Time Clock	\$427.00
-----------------	--	----------

Logix Injector Assemblies

AT1035731	Injector Assm. "F", Peach, 7" Tank	\$10.70
AT1035732	Injector Assm. "G", Tan, 8" Tank	\$10.70
AT1035733	Injector Assm. "H", Lt. Purple, 9" Tank	\$10.70
AT1035734	Injector Assm. "J", Lt Blue, 10 and 12" Tank	\$10.70
AT1035735	Injector Assm. "K", Pink, 13" Tank	\$10.70
AT1035736	Injector Assm. "L", Orange, 14" Tank	\$10.70

* Non-Stock Items. See "Terms and Conditions" for details.

Autotrol 255 & Performa Valves w/460i Controller

PART NUMBER

DESCRIPTION

Suggested Retail



Autotrol
Pentair Water



255/460

Autotrol 255/460i Electronic Demand Control L/Manifold

Designed to monitor water usage and regenerate at just the right time to maximize efficiency while minimizing salt and water consumption. The Autotrol's 460i Electronic Demand Control is the "intelligent" water conditioning choice. The 255 Valve features a rugged, robust, re-engineered design that uses less water, runs quieter and lasts longer. A good system paired with the 460i Control provides conditioning efficiency that automatically adjusts to water demands and ensures continuous conditioned water with substantial savings on both salt and water. Includes a Cover, Sight Glass Air Check, Turbine meter, Long Rinse Cam and is CSA Approved.

**** Order Backwash Control separately.

2546-BB00-CE	3/4" Electronic w/Air Check	\$610.00
2546-BC00-CE	3/4" Electronic w/Air Check	\$621.00
2546-BC00-CE-XL	3/4" Electronic w/Long Rinse	\$624.00

Performa 268 Softener Control Less Tube Adapters

Designed for large residential and light commercial flow rates and applications, the five-cycle Performa control valve features a service flow rate up to 25 gpm, timer or demand controlled, and adjustable salt-dial. Handles up to 14" tanks. The controls do not include nuts, gasket and adapters. Covers are not included with the 440 and 460 timer controls.

26846-BB09-LE	1" Electronic	\$704.00
---------------	---------------	----------

Performa Cv Filter Controls Less Tube Adapters

The 3-cycle Performa Cv 263 Filter Valve is a high-performance filter featuring a Cv of 5.0, allowing it to be used on carbon filter in the range of 21 to 24-inch tanks and multi-media filter application in the range of 16 to 18-inch tank. Available with the 742 or the 762 Control. Does not include backwash flow control, nuts, gaskets or adapters.

263742-CV-FTC-LE6	1" Electronic Time Clock Filter	\$478.00
263762-CV-FM-LE6	1" Electronic Metered Filter	\$697.00

Performa Cv Conditioner Controls Less Tube Adapters

The Performa Cv Conditioner Valve is a rugged 5-cycle commercial control with standard down-flow co-current regenerant. It's a full 1-inch control valve, specially ported to achieve higher performance flows, up to 25gpm and a backwash rates of 20 gpm capable of backwashing up to 21" tanks. Available with the 742 time clock controller or 762 demand controller. Does not include backwash flow control, nuts, gaskets or adapters.

278742-CVDM-LE6	1" Electronic Time Clock Filter	\$525.00
278762-CVDM-LE6	1" Electronic Demand Meter Softener	\$654.00

Autotrol Backwash Controls

AT1000209	Control for 7" Tanks	\$15.70
AT1000210	Control for 8" Tanks	\$15.70
AT1000211	Control for 9" Tanks	\$15.70
AT1000212	Control for 10" Tanks	\$15.70
AT1000213	Control for 12" Tanks	\$15.70
AT1000214	Control for 13" Tanks	\$17.10
AT1000215	Control for 14" Tanks	\$17.10



AT1000209



AT1000214

* Non-Stock Items. See "Terms and Conditions" for details.

Fax Nelsen in OH - 888.544.8780, AZ - 602.442.0447 or FL - 813.712.2274

All prices and products subject to change without notice. ©2011 Nelsen Corporation



PART NUMBER	DESCRIPTION	Suggested Retail
-------------	-------------	------------------

Autotrol Manifolds



AT51

AT51	Stainless, 3/4" FIPT for 255 Valves	\$35.00
AT52	Stainless, 1" FIPT for 255 Valves	\$52.00
AT5A	Noryl, 3/4" FIPT for 255 Valves	\$17.45
AT1234254	Noryl, 1" MNPT for 255 Valves	\$26.60



AT5A

Autotrol By-Pass Valves

SELECT a Tube Adapter Kit below.

AT256	For 155 and 255 Valves	\$46.00
AT1265	For 268 and 263 Valves	\$65.00



AT256



AT1265

Tube Adapter Kits for By-Pass Valves

All kits include sets of adapters, gaskets, and durez nuts.

AT07-CT	3/4" Copper Tube Adptr Kits	\$28.75
AT10-CT	1" Copper Tube Adptr Kits	\$31.00
AT12-CT	1-1/4" Copper Tube Adptr Kits	\$39.00
AT07-PVC	3/4" PVC Tube Adptr Kits	\$34.00
AT10-PVC	1" PVC Tube Adptrs Kits	\$33.00

Autotrol 460i Retrofit Kit

Everything needed to convert an Autotrol timer valve to an electronic valve. Includes Novram 460 electronic timer, turbine assembly, hardware accessories and cover.

AT460I	Electronic Retrofit Kit	\$411.00
--------	-------------------------	----------



AT07-CT



AT07-PVC

Autotrol Valve Covers

ATI-LID-CF	"I" Lid Cover 400 Series Controlled Valves, Closed Face, Single Spring	\$16.00
ATLOG-LID-DG	Cover for Logix Valve, Dark Gray	\$10.00
ATLOG-LID-OUT-A	Outdoor Cover w/Face Shield, Almond	\$16.00



ATI-LID-CF

Autotrol Replacement Timers

AT1040534	460i Timer	\$383.00
AT1051019	940 Timer (255 Valve)	\$176.00
AT3033149	263/440iHV Timer, 59 Minute	\$171.00



ATLOG-LID-DG



460I TIMER

* Non-Stock Items. See "Terms and Conditions" for details.

Autotrol Literature & Service Manuals

PART NUMBER

DESCRIPTION

Suggested Retail

Autotrol Literature and Service Manuals

BROCHURE

Features and benefits of water softeners.

AT1204230	Residential Valve Overview	\$3.45
D-1447	Autotrol Deionizer, Brochure	\$1.70

HOMEOWNER BROCHURES

Quality You Can Feel Brochures

AT1228454	255-440/460i Series	\$4.45
AT1225150	Performa, 440i/460i Series	\$4.45
AT1226480	ReadySoft	\$4.35
AT1255604	Logix Controllers	\$4.45

SPECIFICATION SHEETS

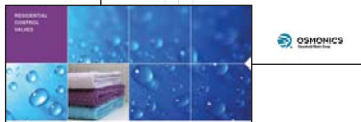
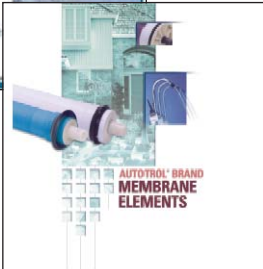
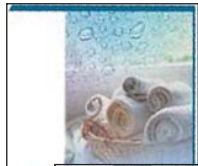
Features and specifications on individual Autotrol Controls.

AT1017949	Spec. Sheet, 255/460i	\$1.75
AT1223491	Spec. Sheet, Performa - 460i	\$1.75

SERVICE MANUALS

Installation instructions, parts lists, troubleshooting guides, etc.

AT1017810	Service Manual, 168	\$2.65
AT1017811	Service Manual, 163/440	\$2.65
AT1017812	Service Manual, 168FA	\$2.65
AT1017947	Service Manual, 255/460i	\$2.65
AT1017948	Service Manual, 460i	\$2.65
AT1018075	Service Manual, 255	\$2.65
AT1222945	Service Manual, Performa Valve	\$2.65
AT1227756	Service Manual, Performa Valve W/960 Control	\$2.65
LOGIX MANUAL	Service Manual, LOGIX Controller	\$5.70
AT3000440	Service Manual, 742/762 Controls	\$5.70



* Non-Stock Items. See "Terms and Conditions" for details.

Fax Nelsen in OH - 888.544.8780, AZ - 602.442.0447 or FL - 813.712.2274

All prices and products subject to change without notice. ©2011 Nelsen Corporation



"C-Series" Residential Control Valves

PART NUMBER

DESCRIPTION

Suggested Retail

"C-Series" Control Valves must be purchased within a completed softener or filter system, however Controls may be purchased as a Field Replacement or to retrofit existing equipment only.



1" "C-SERIES" "TC" CONTROL VALVE



1" "C-SERIES" "CS" CONTROL VALVE



1" "C-SERIES" "EE" CONTROL VALVE



1-1/4" "C-SERIES" CONTROL VALVE

Nelsen "C-Series" Electronic Residential Control Valves

This versatile electronic control valve series features a solid state microprocessor available in 1" and 1-1/4" has the backwash and brining ability up to 21" tanks. A 12 volt AC adapter provides safe operation for the reliable and proven DC drive motor. A variety of valve configurations are available with additional features.

1" Time Clock Valve

Features 10 selectable pre-programmed regeneration cycles with up to 99 days between regeneration and a double backwash feature. Stores system configuration and operation date in non-volatile memory. Post treated water brine refill.

CL10T-0.0-SC	1" Time Clock Softener Valve	\$385.00
CL10TBF-0.0-SC	1" Backwash Only Valve	\$374.00

1" Valves with "CS" Board Controller

A "C-Series" control equipped with the "CS" electronic control board offers 66 pre-programmed regeneration cycles with upflow or downflow regeneration, and pre or post treated water regenerant refill. A coin cell lithium battery provides back-up with an 8 hour carry over.

CL10MCS-0.0	1" Metered Softener Valve	\$520.00
CL10FCS-0.0	1" Backwash Only Valve	\$476.00

Valves with "EE" Board Controller

The "C-Series" control equipped with the "EE" electronic control board is a 6-cycle control with fully adjustable cycle times delivering controlled backwash, downflow brining/slow rinse, second backwash, fast rinse, refill and downflow service. Four methods to initiate regeneration; meter immediate, meter delayed, time clock delayed or pressure differential.

CL10E-0.0-SC	1" Time Clock Softener Valve	\$486.00
CL10EM-0.0-SC	1" Metered Softener Valve	\$520.00
CL10EUM-0.0-SC	1" Upflow Metered Softener Valve	\$540.00
CL10EBF-0.0-SC	1" Backwash Only Valve	\$476.00

1-1/4" Valves with "EE" Board Controller

The "C-Series" control equipped with the "EE" electronic control board is a 6-cycle control with fully adjustable cycle times delivering controlled backwash, downflow brining/slow rinse, second backwash, fast rinse, refill and downflow service with flow rates of 34 gpm and backwash capabilities of 32 gpm. Four methods to initiate regeneration; meter immediate, meter delayed, time clock delayed or pressure differential. A coin cell lithium battery offers back-up with a 8 hour carry over. The 12-volt output AC adapter provides safe and easy installation. Reliable and proven DC drive. Economical stainless steel optional meter assembly.

CL12EM-0.0	1-1/4" Metered Softener Valve	\$623.00
CL12EBF-0.0	1-1/4" Filter Valve	\$572.00

* Non-Stock Items. See "Terms and Conditions" for details.

"C-Series" Accessories

PART NUMBER

DESCRIPTION

Suggested Retail



C-BYPASS



C07-CT

C10-CT



C0710-PVC



C10-PVC



C-WRENCH



COVER-A

COVER-W



INJECTORS



CINJ-SCREEN



CINJ-PLUG

Tube Adapter Kits for By-Pass Valves

C-BYPASS	By-Pass Assembly	\$46.00
C07-CT	3/4" Brass Sweat Adapters	\$24.60
C10-CT	1" Brass Sweat Adapters	\$31.30
C12-CT	1-1/4" Brass Sweat Adapters	\$97.50
C1215-CT	1-1/4" x 1-1/2" Brass Sweat Adapters	\$97.50
C10-PVC	1" PVC Male NPT Elbow Adapters	\$12.65
C10S-PVC	1" PVC Male NPT Straight Adapters	\$18.00
C10-90-PVC	1" 90° Bypass Vertical Adapters	\$24.70
C12S-PVC	1-1/4" PVC Male NPT Straight Adapters	\$19.40
C0710-PVC	3/4" x 1" PVC Solvent Elbow Adapters	\$12.65
C0710-PVC	3/4" x 1" PVC Solvent Elbow Adapters	\$12.65
C1215-PVC	1-1/4" & 1-1/2" PVC Solvent Assembly	\$27.00

3/4" FLOW CONTROL WASHERS

WASHER07-0.7	3/4" DLFC Washer, 0.7 gpm	\$3.70
WASHER07-1.0	3/4" DLFC Washer, 1.0 gpm	\$3.70
WASHER07-1.3	3/4" DLFC Washer, 1.3 gpm	\$3.70
WASHER07-1.7	3/4" DLFC Washer, 1.7 gpm	\$3.70
WASHER07-2.2	3/4" DLFC Washer, 2.2 gpm	\$3.70
WASHER07-2.7	3/4" DLFC Washer, 2.7 gpm	\$3.70
WASHER07-3.2	3/4" DLFC Washer, 3.2 gpm	\$3.70
WASHER07-4.2	3/4" DLFC Washer, 4.2 gpm	\$3.70
WASHER07-5.3	3/4" DLFC Washer, 5.3 gpm	\$3.70
WASHER07-6.5	3/4" DLFC Washer, 6.5 gpm	\$3.70
WASHER07-7.5	3/4" DLFC Washer, 7.5 gpm	\$3.70
WASHER07-9.0	3/4" DLFC Washer, 9.0 gpm	\$3.70
WASHER07-10.0	3/4" DLFC Washer, 10.0 gpm	\$3.70

Valve Wrench

Handy universal wrench removal of injector cover, DLFC, meter and fitting assembly nuts, as well as drive cap assembly to access the piston and seals.

C-WRENCH	Universal wrench for C-Series valve	\$20.00
----------	-------------------------------------	---------

Weather Tight Covers

For "C" Series Controls installed outside and NOT under cover the weather cover must be used for warranty to be valid.

COVER-W	Weather Cover, White	\$21.00
COVER-A	Weather Cover, Almond	\$21.00

Injector Assemblies and Screen

CINJ-SCREEN	Injector Screen	\$3.35
CINJ-PLUG	Injector Assem. "Z" Plug	\$2.45
CINJ-A	Injector Assem. "A" - Black	\$7.20
CINJ-B	Injector Assem. "B" - Brown	\$7.20
CINJ-C	Injector Assem. "C" - Violet	\$7.20
CINJ-D	Injector Assem. "D" - Red	\$7.20
CINJ-E	Injector Assem. "E" - White	\$7.20
CINJ-F	Injector Assem. "F" - Blue	\$7.20
CINJ-G	Injector Assem. "G" - Yellow	\$7.20
CINJ-H	Injector Assem. "H" - Green	\$7.20
CINJ-I	Injector Assem. "I" - Orange	\$7.20
CINJ-J	Injector Assem. "J" - Light Blue	\$7.20
CINJ-K	Injector Assem. "K" - Light Green	\$7.20

* Non-Stock Items. See "Terms and Conditions" for details.



Clack Commercial Control Valves must be purchased within a completed softener or filter system. Controls may also be purchased as a Field Replacement or to retrofit existing equipment only.

Clack WS1.5EE Control Valves

The Clack WS1.5EE control valve is a 1.5" top mount control valve suited for mid-size commercial/industrial applications featuring fully adjustable cycle times with a 6-cycle control delivering controlled backwash, downflow brining/slow rinse, second backwash, fast rinse, refill with downflow service. This Lead Free brass valve body has service flow rates of 60 gpm and a backwash of 50 gpm and post treated water regenerant refill. The solid state microprocessor with easy access front panel settings displays time of day, days until next regeneration, volume remaining, current flow rate and total volume used (Totalizer). Four methods to initiate regeneration; meter immediate, meter delayed, time clock delayed or pressure differential. Optional double backwash feature offers optimum regeneration, cleaning ability and efficiency. A coin cell lithium battery offers back-up with a 8 hour carry over. The 12-volt output AC adapter provides safe and easy installation. Reliable and proven DC drive. Economical stainless steel optional meter assembly.



CL15EE-0.0-SC



CL-15-EM

CL-WS15EE-0.0-SC	1-1/2" Timeclock Softener Valve	\$1,433.00
CL15EBF-0.0	1-1/2" Filter Valve	\$1,412.00

FOR WS1.5EE METERED CONTROL - ADD 1.5" METER ASSEMBLY

CL-15-EM	WS1.5 Meter Assembly Male x Female NPT	\$663.00
----------	--	----------

Clack WS2EE Control Valves

The Clack WS2EE control valve is a 2" top mount control valve suited for mid-size commercial/industrial applications featuring fully adjustable cycle times with a 6-cycle control delivering controlled backwash, downflow brining/slow rinse, second backwash, fast rinse, refill with downflow service. This Lead Free brass valve body has service flow rates of 125 gpm and a backwash of 85 gpm and post treated water regenerant refill. The solid state microprocessor with easy access front panel settings displays time of day, days until next regeneration, volume remaining, current flow rate and total volume used (Totalizer). Four methods to initiate regeneration; meter immediate, meter delayed, time clock delayed or pressure differential. Optional double backwash feature offers optimum regeneration, cleaning ability and efficiency. A coin cell lithium battery offers back-up with a 8 hour carry over. The 12-volt output AC adapter provides safe and easy installation. Reliable and proven DC drive. Economical stainless steel optional meter assembly.

The WS2EE/QC valve features the "Quick Connect" for tanks with a 6" flange top opening giving the valve the ability to swivel 360 degrees in place. The WS2EE/QC also features a 2" distributor pilot and can be configured for side-mount applications. Requires the flange adapter listed below. "



CL20EE-0.0-SC



CL20EE/QC-0.0-SC
(SHOWN IN SIDE MOUNT
CONFIGURATION)

CL-WS2EE-0.0-SC	WS2EE 2" Time Clock Softener Valve	\$2,107.00
CL-WS2-QC-0.0-SC	WS2EE/QC 2" Time Clock Softener Valve	\$2,107.00

FOR WS2EE METERED CONTROL - ADD 2" METER ASSEMBLY

CL-2-EM	WS2 Meter Assembly Male x Female NPT	\$663.00
---------	--------------------------------------	----------

FOR WS2EEQC CONTROL - ADD STAINLESS STEEL FLANGE ASSEMBLY

CL-WS2H/2QC-FLNG	WS2H/2QC 6" Flange Base Assembly	\$364.00
------------------	----------------------------------	----------



CL-WS2H/2QC-FLNG

Clack WS2H Control Valves

The Clack WS2H (heavy) control valve is a 2" top or side mount control valve suited for commercial/industrial applications with 9-cycle fully adjustable cycle sequences and fully adjustable cycle times and a 1-28 days override feature. This Lead Free brass valve body has service flow rates of 125 gpm and a backwash of 125 gpm with pre or post treated water regenerant refill. A built-in internal flow meter comes standard in all valves. The solid state microprocessor with easy access front removable POD settings displays Time of Day, Current Flow Rate, Totalizer and Volume/Days until Regeneration. Four methods to initiate regeneration; meter immediate, meter delayed, time clock delayed or pressure differential. Optional double backwash feature offers optimum regeneration, cleaning ability and efficiency. The capacitor provides back-up with up to 24 hour carry over. The 20-volt output AC adapter provides safe and easy installation with a reliable and proven DC drive.



CL-WS2H-0.0-SC

CL-WS2H-0.0-SC	2" Heavy Metered Softener Valve	\$4,698.00
----------------	---------------------------------	------------

* Non-Stock Items. See "Terms and Conditions" for details.

Clack WS3 Control, Clack Commercial Accessories

PART NUMBER

DESCRIPTION

Suggested Retail



CL-WS3-0.0-SC



CL-3-EM



CL-WS3-FLANGE



CL-DLFC-100



CL-DLFC-75



CL-DLFC-150



CLACK 3" MAV VALVE



CL-SYS-BOARD

Clack WS3 Control Valves

The Clack WS3 control valve is a 3" top or side mount control valve suited for commercial/ industrial applications with 9-cycle fully adjustable cycle sequences and fully adjustable cycle times and a 1-28 days override feature. This Lead Free brass valve body has service flow rates of 250 gpm and a backwash of 220 gpm with pre or post treated water regenerant refill. The solid state microprocessor with easy access front removable POD settings displays Time of Day, Current Flow Rate, Totalizer and Volume/Days until Regeneration. Four methods to initiate regeneration; meter immediate, meter delayed, time clock delayed or pressure differential. Optional double backwash feature offers optimum regeneration, cleaning ability and efficiency. The capacitor provides back-up with up to 24 hour carry over. The 20-volt output AC adapter provides safe and easy installation with a reliable and proven DC drive. Economical stainless steel meter assembly is optional.

CL-WS3-0.0-SC	3" Time Clock Softener Valve	\$5,785.00
---------------	------------------------------	------------

FOR WS3 METERED CONTROL - ADD 3" METER ASSEMBLY

CL-3-EM	WS3 3" Meter Assembly Fx F NPT	\$2,258.00
---------	--------------------------------	------------

Clack Tank Adapter Assemblies

The tank adapter assembly is required for the WS2QC, WS2H and WS3 control valve to be fitted to the tank.

CL-WS2H/2QC-4	WS2H/2QC 4" Base Assembly	\$216.00
CL-WS2H/2QC-FLNG	WS2H/2QC 6" Flange Base Assembly	\$364.00
CL-WS2H/2QC-SIDE	WS2H/2QC 2" Side Mount Base Assembly NPT	\$530.00
CL-WS3-FLANGE	WS3 6" Flange Base Assembly	\$397.00
CL-WS3-SIDE	WS3 Side Mount Base Assembly NPT	\$764.00

Clack Flow Controls

CL-DLFC-75	Drain Elbow 3/4" Male Assembly	\$7.15
CL-DLFC-100	Drain Fitting 1" Male NPT w/o Silencer	\$37.00
CL-DLFC-150	DLFC Assembly 1.5 MNPT x 1.5 FNPT (No DLFC Buttons)	\$181.00
CL-DLFC-300	WS3 DLFC Assembly NPT	\$491.00
WASHER10-10.0	DLFC Button - 10.0 gpm	\$9.10
WASHER10-13.0	DLFC Button - 13.0 gpm	\$9.10
WASHER10-15.0	DLFC Button - 15.0 gpm	\$9.10
WASHER10-17.0	DLFC Button - 17.0 gpm	\$9.10
WASHER10-20.0	DLFC Button - 20.0 gpm	\$9.10
WASHER10-25.0	DLFC Button - 25.0 gpm	\$9.10

Clack MAV (Motorized Alternating Valve)

The Clack MAV (Motorized Alternating Valve) allows for the WS Control Valve to be configured with No Hard Water Bypasses, Separate Source regeneration, or Twin Tank Operation. 8 foot communication cable included with each MAV valve. Optional lengths are available and listed below.

CL-MAV-15	WS15 1.5" No Hard Water Bypass Valve	\$632.00
CL-MAV-20	WS2 2" No Hard Water Bypass Valve	\$870.00
CL-MAV-30	WS3 3" No Hard Water Bypass Valve NPT	\$1,930.00

WS2H/WS3 MULTI TANK (3 OR 4) SYSTEM BOARD

CL-SYS-BOARD	WS2H/ WS3 PC System Board	\$456.00
--------------	---------------------------	----------

COMMUNICATION CORD

CL-COM-12	WS2H/3 System Comm Cord, 12' Red	\$22.20
CL-COM-24	WS2H/3 System Comm Cord, 24' Blue	\$40.00
CL-COM-36	WS2H/3 System Comm Cord, 36' Yellow	\$55.00

* Non-Stock Items. See "Terms and Conditions" for details.

Fax Nelsen in OH - 888.544.8780, AZ - 602.442.0447 or FL - 813.712.2274

All prices and products subject to change without notice. ©2011 Nelsen Corporation



AquaMatic "V42 Series" Metal Diaphragm Valves



The AquaMatic V42 Series valves are constructed of cast iron and are designed for air and water applications. A separate control chamber protects the diaphragm from line fluids and extends cycle life. Reinforced diaphragm of Buna N or Viton materials are pre-formed and stress relieved to maximize responsiveness and product life. The valve is highly serviceable even while in line. A variety of options are available such as spring-assist open, spring-assist closed, flow control limit stop, poppet position indicator, and high temperature EP or Viton seals. All AquaMatic Diaphragm valves are rated at 125 PSI @ 140° F.

For normally closed valves please call for the add-on amount.

Cast Iron Diaphragm Valves - Normally Open



CAST IRON
DIAPHRAGM VALVE

V42B-0000-00000	3/4" Cast Iron, Threaded, N.O.	\$154.00
V42C-0000-00000	1" Cast Iron, Threaded, N.O.	\$154.00
V42D-0000-00000	1 1/4" Cast Iron, Threaded, N.O.	\$199.00
V42E-0000-00000	1 1/2" Cast Iron, Threaded, N.O.	\$199.00
V42G-0000-00000	2" Cast Iron, Threaded, N.O.	\$418.00
V42H-0000-00000	2 1/2" Cast Iron, Threaded, N.O.	\$418.00
V42J-0000-00000	3" Cast Iron, Threaded, N.O.	\$692.00
V42K-3000-00000	4" Cast Iron, Flanged, N.O.	\$1,413.00
V42L-3000-00000	6" Cast Iron, Flanged, N.O.	\$5,115.00

Brass Diaphragm Valves - Normally Open



CAST IRON DIAPHRAGM
FLANGED VALVE

V42B-0100-00000	3/4" Brass, Threaded, N.O.	\$378.00
V42C-0100-00000	1" Brass, Threaded, N.O.	\$378.00
V42D-0100-00000	1 1/4" Brass, Threaded, N.O.	\$571.00
V42E-0100-00000	1 1/2" Brass, Threaded, N.O.	\$571.00
V42G-0100-00000	2" Brass, Threaded, N.O.	\$1,272.00
V42H-0100-00000	2 1/2" Brass, Threaded, N.O.	\$1,272.00
V42J-0100-00000	3" Brass, Threaded, N.O.	\$1,994.00

AquaMatic "V46 Series" Stainless Steel Diaphragm Valves

The AquaMatic V46 valves have the same operational characteristics, and are constructed of 316 Stainless Steel material. These valves are available in 1-inch, 1-1/2-inch and 2-inch sizes, in either threaded or flanged ends. Flanged valves are rated for 150 PSI (10 bar) and threaded valves are rated for 250 PSI (17 bar). With all stainless steel internals and no internal threads, this series is ideal for corrosion resistance applications.

Stainless Steel Diaphragm Valves - Normally Open



CAST IRON DIAPHRAGM
FLANGED VALVE

V46C-02000-03000	1" Stainless Steel, Threaded, N.O.	\$678.00
V46E-0200-03000	1 1/2" Stainless Steel, Threaded, N.O.	\$852.00
V46F-0200-03000	2" Stainless Steel, Threaded, N.O.	\$1,046.00
V46C-32000-03000	1" Stainless Steel, Flanged, N.O.	\$732.00
V46E-3200-03000	1 1/2" Stainless Steel, Flanged, N.O.	\$962.00
V46F-3200-03000	2" Stainless Steel, Flanged, N.O.	\$1,170.00

* Non-Stock Items. See "Terms and Conditions" for details.

AquaMatic K53 Series Valves, 962 Stager

PART NUMBER

DESCRIPTION

Suggested Retail



K53 SERIES

AquaMatic "K53 Series" Noryl Diaphragm Valves

The AquaMatic K53 Series valve is designed for controlling the flow of most fluids including deionized water, salt solutions, and corrosive fluids such as acids and caustics. The rugged construction employs strong corrosion-resistant glass-filled Noryl components. The "Y" pattern design permits high flow with low pressure drop. Separate flow and control chambers provide positive closing without springs. Dual "O" ring design on the shaft prevents leakage between the flow and control chambers and the cap is easily removed for maintenance purposes. True union end design with female socket weld connections provide easy installation and servicing. End adapters must be ordered separately.

NORYL DIAPHRAGM VALVES - NORMALLY OPEN (Order end adapters separately)

K531-X200-14000	1" Noryl, N.O.	\$300.00
K534-X200-14000	1½" Noryl, N.O.	\$469.00
K535-X200-14000	2" Noryl, N.O.	\$842.00
K537-X200-14000	3" Noryl, N.O.	\$1,414.00

END ADAPTERS (FOR NORYL DIAPHRAGM VALVES)

PVC female socket weld connectors. Connector kits consist of 2 each of the sockets. One kit needed per valve.

K531-060	1" PVC Socket Adapter Kit	\$20.95
K534-060	1½" PVC Socket Adapter Kit	\$30.50
K535-060	2" PVC Socket Adapter Kit	\$42.00
K537-060	3" PVC Socket Adapter Kit	\$50.00



K53 SERIES

AquaMatic 962 Stager Controls

The AquaMatic 962 Stager Controls combine an AquaMatic stager with an Autotrol 962 Series electronic control, mounted and pre-wired in a NEMA rated enclosure.

The Series 962 electronic controls provide sophisticated, demand-based water conditioning by combining a microprocessor with a flow meter to electronically monitor the amount of water used. Time-based and/or external signal initiation is also available as a standard feature. This fully programmable series of controls provide the ability to fine-tune the operation to meet the application requirements.

E948-00F1-S000B	Softener Controller, Simplex	\$2,245.00
E948-01F1-S000B	Filter Controller, Simplex	\$2,245.00
E951-09F1-S000B	Softener Controller, Twin Parallel - 2 Req.	\$3,205.00
E958-TAF1-WS00C	Softener Controller, Twin Alternating	\$4,205.00



962 STAGER CONTROL

AquaMatic "540 Series" Ejectors

The AquaMatic 540 Series PVC ejectors are available in 1/2" through 2" with female NPT threads or female socket ends for US pipe. Specific applications are brine draw, acid draw, or caustic draw. This economical ejector is engineered to draw two parts of regenerant fluid for each three parts of water.

The injectors listed below are "threaded," for "socket" adapters add "S" to the part number. For example, 540-1 (threaded) and 540S-1 (socket). The pricing for threaded and socket is the same for each size.

540-1	1/2" Threaded, Black	\$109.00
540-2	1/2" Threaded, Brown	\$109.00
540-3	1/2" Threaded, Red	\$109.00
540-4	1/2" Threaded, White	\$109.00
540-5	1/2" Threaded, Blue	\$109.00
541-1	3/4" Threaded, Red	\$130.00
541-2	3/4" Threaded, White	\$130.00
541-3	3/4" Threaded, Blue	\$130.00
542-1	1" Threaded, Red	\$160.00
542-2	1" Threaded, White	\$160.00
542-3	1" Threaded, Blue	\$160.00



EJECTORS

* Non-Stock Items. See "Terms and Conditions" for details.

Ejectors, Parts Kits for Aquamatic Valves

PART NUMBER	DESCRIPTION	Suggested Retail
-------------	-------------	------------------

EJECTORS (Continued)

544-1	1½" Threaded, Red	\$210.00
544-2	1½" Threaded, White	\$210.00
544-3	1½" Threaded, Blue	\$210.00
544-4	1½" Threaded, Yellow	\$210.00
544-5	1½" Threaded, Orange	\$210.00
546-1	2" Threaded, Red	\$322.00
546-2	2" Threaded, White	\$322.00
546-3	2" Threaded, Blue	\$322.00
546-4	2" Threaded, Yellow	\$322.00
546-5	2" Threaded, Orange	\$322.00

AquaMatic Parts Kits For AquaMatic Diaphragm Valves

The AquaMatic 540 Series PVC ejectors are available in 1/2" through 2" with female NPT threads or female socket ends for US pipe. Specific applications are brine draw, acid draw, or caustic draw. This economical ejector is engineered to draw two parts of regenerant fluid for each three parts of water.

The injectors listed below are "threaded," for "socket" adapters add "S" to the part number. For example, 540-1 (threaded) and 540S-1 (socket). The pricing for threaded and socket is the same for each size.



424-RA

PARTS KITS FOR STEEL VALVES - DIAPHRAGM AND SEAL KIT

421-RA	3/4" & 1" Valve, Diaphragm and Seal Kit	\$43.00
424-RA	1¼" & 1½"	\$49.00
425-RA	2"	\$67.00
426-RA	2" & 2½"	\$79.00
427-RA	3"	\$108.00
428-RA	4"	\$151.00
429-RA	6"	\$730.00

PARTS KITS FOR STEEL VALVES - INTERNAL PARTS KIT

421-RF	3/4" & 1" Valve, Internal Parts Kit	\$80.00
424-RF	1¼" & 1½"	\$117.00
425-RF	2"	\$191.00
426-RF	2" & 2½"	\$265.00
427-RF	3"	\$360.00
428-RF	4"	\$585.00
429-RF	6"	\$2,129.00

PARTS KITS FOR NORYL VALVES - DIAPHRAGM AND SEAL KIT

531-RAE	1" Valve, Diaphragm and Seal Kit	\$46.00
534-RAE	1½"	\$70.00
535-RAE	2"	\$97.00
537-RAE	3"	\$132.00

PARTS KITS FOR NORYL VALVES - INTERNAL PARTS KIT

K531-RF	1" Valve, Internal Parts Kit	\$117.00
K534-RF	1½"	\$186.00
K535-RF	2"	\$293.00
K537-RF	3"	\$497.00

* Non-Stock Items. See "Terms and Conditions" for details.

Erie Valves, Dema Solenoid Valves

PART NUMBER

DESCRIPTION

Suggested Retail

Erie 541/542 Non-Electric, Semi-Automatic Controls

Designed for non-electric applications, these valves automatically cycle and return to service. Manual on, Automatic off! Regeneration cycles are adjustable up to 2 hours with an easy-to-use twist timer. The drain line flow control is adjustable from 0 to 5 gpm on the 3-cycle water softener valve and 0 to 8 gpm on the 2-cycle backwash only valve. The drain line flow must be adjusted when the valve is installed in the home. Distributor opening is 1.050" and drain connection is 1/2" FIPT. Brine connection on water softener valve is 1/4" FIPT. Softener valves feature soft water brine tank refill and upflow brining. Top distributor basket recommended. Tube adapter kit required for hook-up. No cover needed.



E541-030-SOFT

E541-030-SOFT	Non-Electric Softener Valve	\$283.00
E542-030-FILTER	Non-Electric Backwash Only Valve	\$277.00
E541-252-1	3/4" Copper Tube Adapter Kit For 541/542	\$21.85

Dema Solenoid Valves

Dema Solenoid Valves are constructed to insure long, trouble-free life. They employ proven design features for reliable performance on all applications. There are two basic types of solenoid valves, Normally Closed (N.C.) and Normally Open (N.O.). Normally Closed valves open when the coil is energized and close when the coil is de-energized. Normally Open valves close when the coil is energized and open when the coil is de-energized. Normally Closed valves are the most commonly used in water treatment. Valves are rated for 200°F. fluid and 120° ambient. These valves may be mounted horizontal, on their side or in a vertical line. Standard voltage is 120 volts, 24 volts is also available.



E542-030-FILTER

NORMALLY CLOSED - THREADED (FIPT)

A414P-120	1/2" N. C. 120 Volt	\$146.00
A416P-120	3/4" N. C. 120 Volt	\$220.00
A418P-120	1" N. C. 120 Volt	\$290.00

NORMALLY OPEN - THREADED (FIPT)

0414P-120	1/2" N. O. 120 Volt	\$244.00
0416P-120	3/4" N. O. 120 Volt	\$272.00
0418P-120	1" N. O. 120 Volt	\$391.00



A416P-120

* Non-Stock Items. See "Terms and Conditions" for details.