



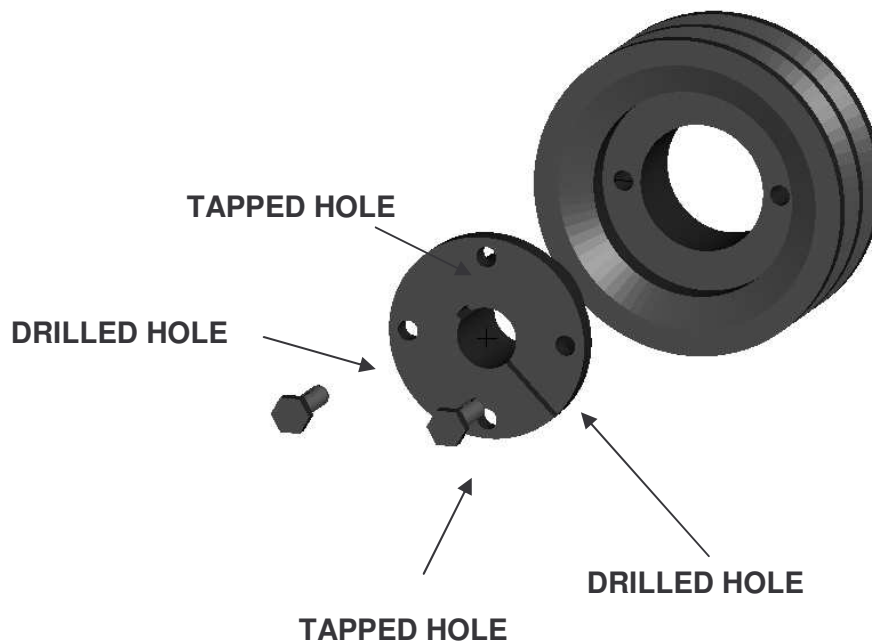
# DEINES MANUFACTURING CORPORATION

## **MODEL 48 SLI DECK SUPPLEMENT**

## **PARTS AND SERVICE MANUAL**

**DEINES MANUFACTURING CORPORATION**  
**306 WEST HIGHWAY 4**  
**RANSOM, KS 67572**  
**800-624-6774**  
[martyj@gbta.net](mailto:martyj@gbta.net)

# GEAR BOX PULLEY INSTALLATION AND REMOVAL



## TO INSTALL GEARBOX PULLEY ON GEARBOX SHAFT:

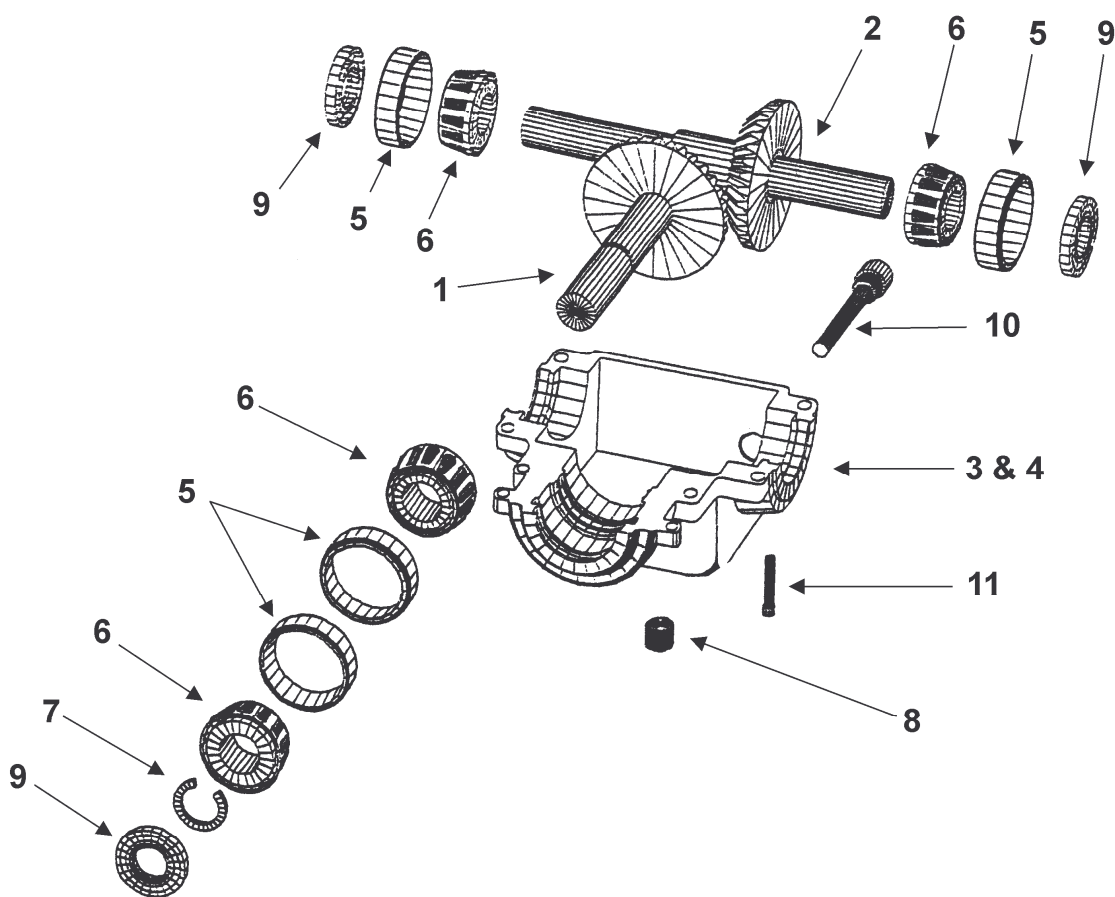
1. Align drilled holes in bushing flange with tapped holes in sheave hub.
2. Insert capscrews through drilled holes in bushing flange and thread loosely in tapped holes in the sheave.
3. Position assembly on shaft and tighten capscrews progressively and uniformly.
4. Torque specifications for a 1/4-20 grade 5 bolt is a maximum of 8 foot pounds. Do not over torque.

## TO REMOVE:

1. Remove capscrews and thread in tapped holes in bushing flange. Tighten progressively until bushing is free from sheave taper.
2. Remove assembly from shaft.
3. **Do not** use a puller on this type of sheave.

# DECK MAINTENANCE FOR ALL MODELS

AREA OF MAINTENANCE	HOURS	NOTES:
Gearbox Superior	8	Check lubricant every 8 hours. A vented dipstick plug is located on the top of the gearbox. The oil level should be at the fill line on the dipstick tube. If the oil level is low add 80w90 gear oil. CAUTION! DO NOT OVERFILL. Tighten the dipstick finger tight. Over tightening this dipstick will damage your gearbox housing.
Blade Spindle Housing	40	Use one stroke of a lubricator with multipurpose grease. This prevents moisture from accumulating in the housing.
Castor Wheel Forks	8	Use two strokes of a lubricator with multi purpose grease.
Castor Wheel Stem (the pneumatic tire)	8	Use three strokes of a lubricator with multi purpose grease.
Castor Wheel Fork & Stem Adjustment	8	Check clip and pin to see that clip is secure to prevent fork or stem from falling out of the deck arm.



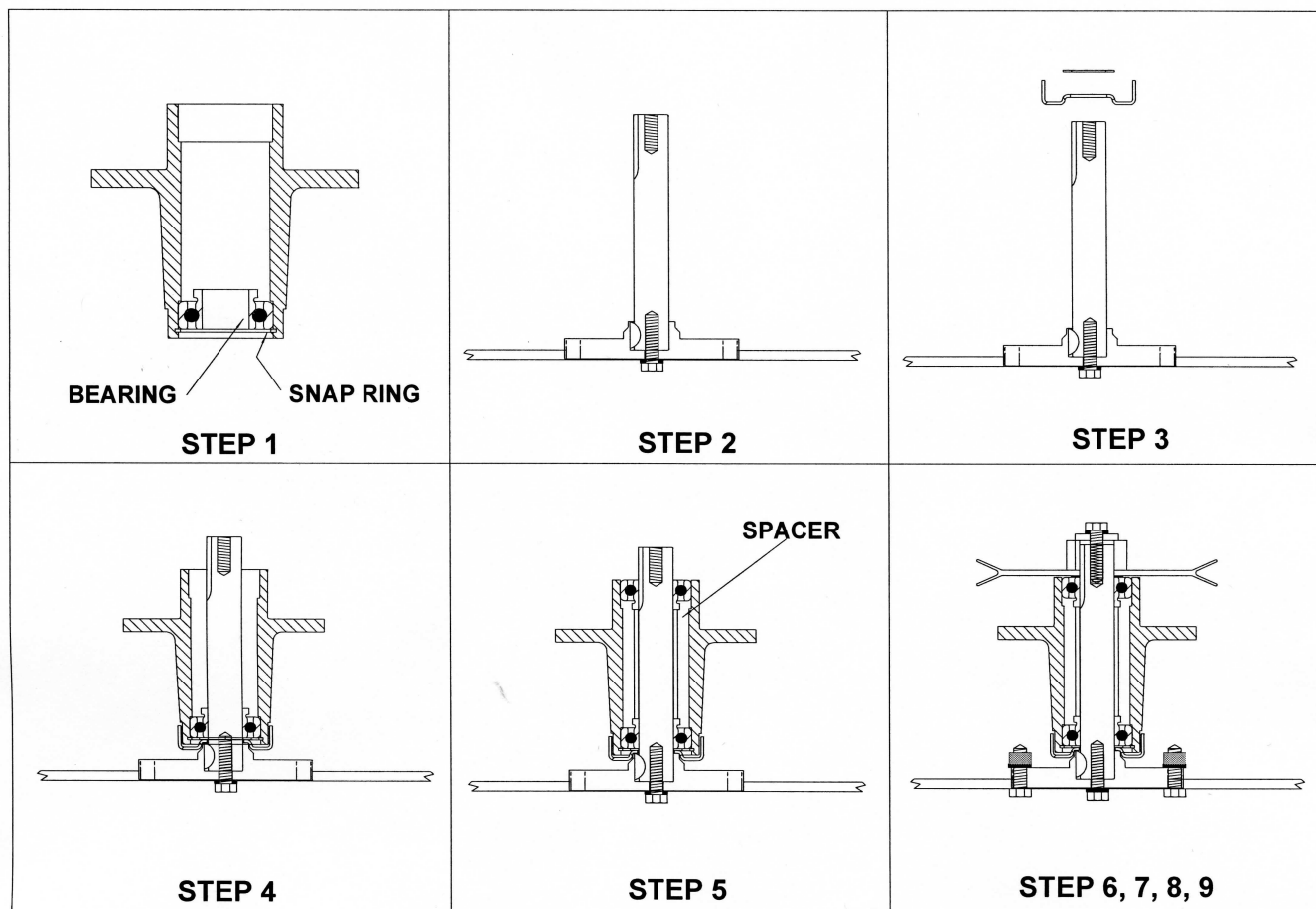
## SUPERIOR GEARBOX PARTS EXPLOSION

MODEL # R100-9AAC-A0485

REF. NO.	PART NO.	DESCRIPTION	REQ'D.
1	R100-8B00-A0500	PINION SHAFT WITH GEAR	1
2	R100-8B00-A0502	CROSSHAFT WITH GEAR	1
3	R100-003M-A0427	CASTING WITH TAPPED HOLES	1
4	R100-004M-A0503	CASTING WITH THRU HOLES	1
5	300-227A	BEARING CUP	4
6	300-227	BEARING CONE	4
7	203293	RETAINING RING	1
8	200300	PIPE PLUG	4
9	109873	SEAL	4
10	IP3021	DIPSTICK	1
11	103125	SOCKET HEAD CAP SCREW	8

USE 80W90 MULTIPURPOSE OIL IN THE SUPERIOR GEARBOX.  
USE THE DIPSTICK TO DETERMINE OIL FILL LEVEL.

# SPINDLE ASSEMBLY INSTRUCTIONS

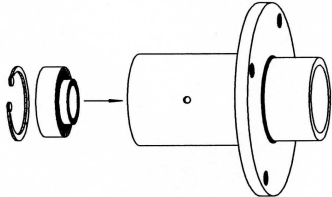
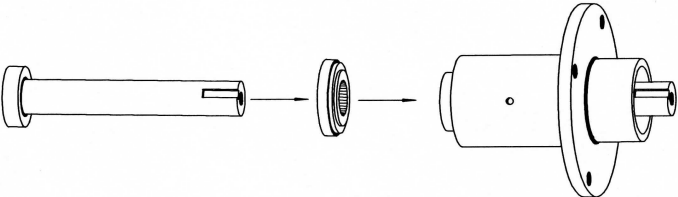
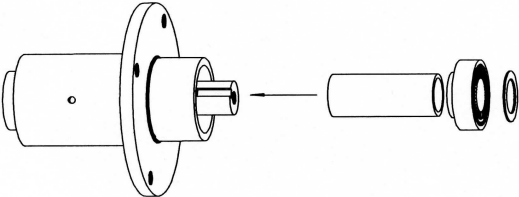
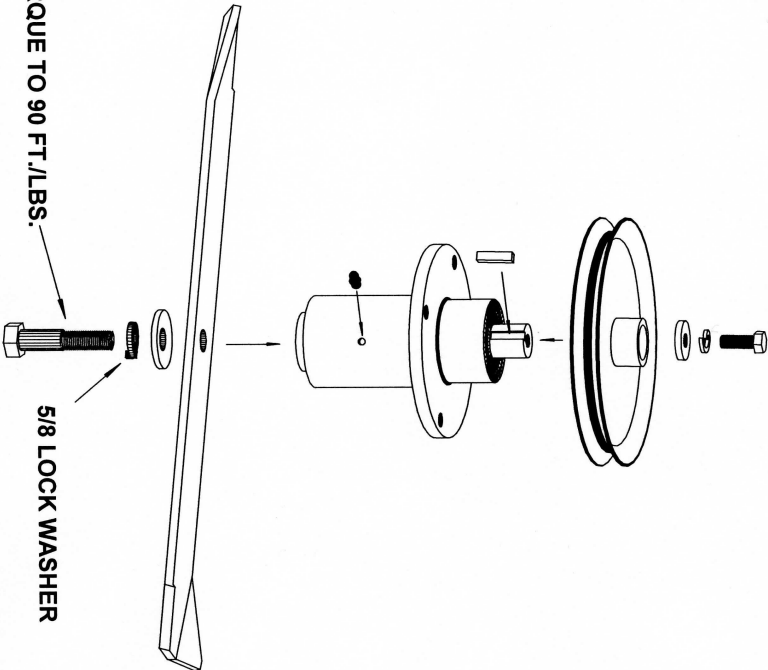


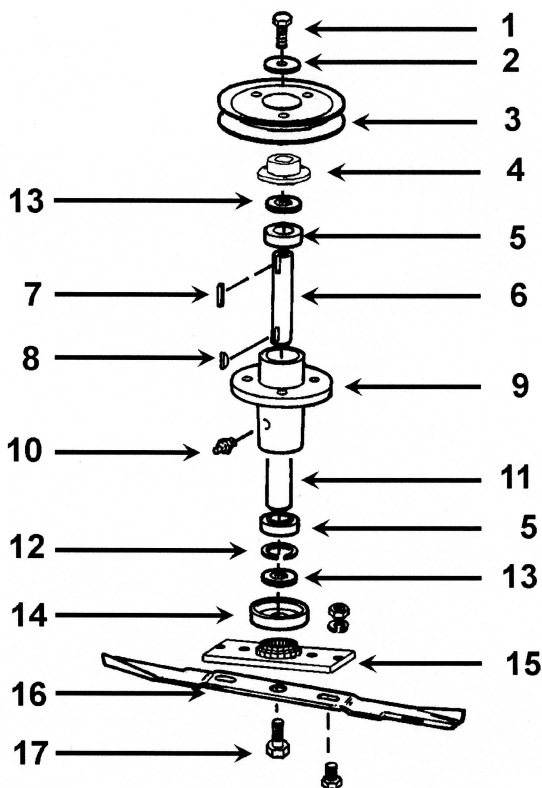
## PRIOR TO SERIAL# Y1909

1. Place bottom bearing in housing and secure with snap ring.
2. Assemble shaft, blade saddle, woodruff key, blade, lock washer, and bolt. Tighten bolt and draw shaft into bottom of the blade saddle.
3. Place trash shield and machine bushing over shaft and against blade saddle.
4. Slide the above shaft assembly in bearing that is in the hub.
5. Slide spacer over the shaft and press the bearing into top side of the hub. Again be sure to place hub of bearing toward center of the hub.
6. Place machine bushing on shaft and against the bearing.
7. Slide the pulley onto the shaft using the square key.
8. With bolt, nut and washer secure the pulley to the shaft and clamp the rotating assembly together.
9. Install set screws in pulley using locktite. Install bolts, lock washers and nuts on the two remaining holes in the blade.

**60 SPINDLE ASSEMBLY INSTRUCTIONS**

AFTER SERIAL # Y1909

STEP 1	STEP 2	STEP 3	STEP 4
			
PRESS THE BOTTOM BEARING INTO THE HOUSING AND SECURE WITH THE SNAP RING	PLACE THE TRASH SHIELD WASHER OVER THE SHAFT AND SLIDE THE SHAFT INTO THE BEARING.	SLIDE THE SPACER OVER THE SHAFT AND PRESS THE BEARING ONTO THE SHAFT. THEN PLACE THE MACHINE BUSHING OVER THE SHAFT.	PLACE THE SQUARE KEY INTO THE KEY SEAT ON THE SHAFT AND SLIDE THE PULLEY ONTO THE SHAFT. SECURE THE PULLEY TO THE SHAFT WITH THE HEAVY WASHER, LOCK WASHER AND THE BOLT. BOLT THE BLADE TO THE BOTTOM OF THE SHAFT WITH THE 5/8" BOLT AND SPECIAL WASHER AND 5/8" LOCK WASHER.

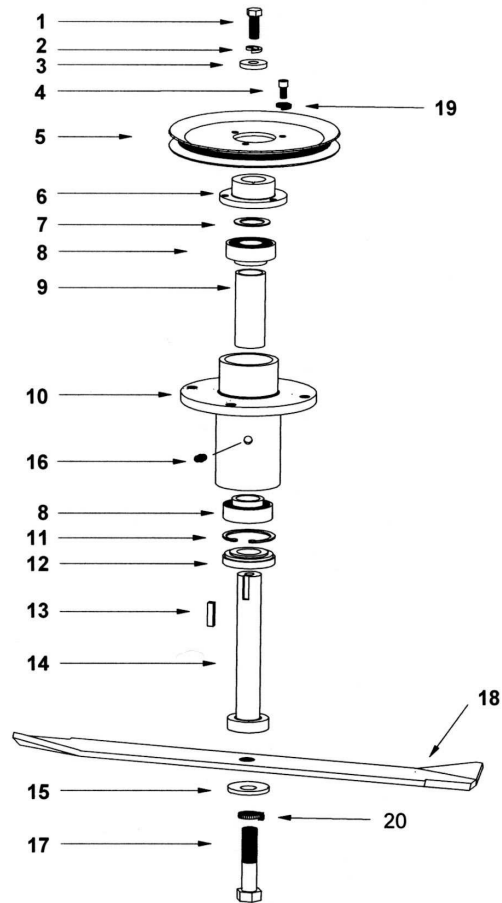


### 48 SPINDLE ASSEMBLY

REF.	PART	DESCRIPTION	QUANTITY
1	300-466	3/8-24 X 1 HHCS	2
2	300-173	WASHER	2
3	400-264	PULLEY	2
4	400-263	HUB	2
5	400-363	BEARING	4
6	400-261	SHAFT	2
7	300-284	KEY	2
8	400-324	KEY	2
9	400-362	HOUSING	2
		3/8 X 2 CARRIAGE BOLT	8
		3/8 LOCKWASHER	8
		3/8 NUT	8
10	300-212A	ZERK	2
11	400-366	SPACER	2
12	400-257	SNAP RING	2
13	300-278	MACHINE BUSHING	4
14	300-607	SHIELD	2
15	300-745	SADDLE	2
		3/8 X 1 1/4 HHCS	4
		3/8 LOCKWASHER	4
		3/8 NUT	4
16	400-184	BLADE	2
17	300-466	3/8 - 24 X 1 HHCS	2
		3/8 LOCKWASHER	2

# 48 SPINDLE ASSEMBLY

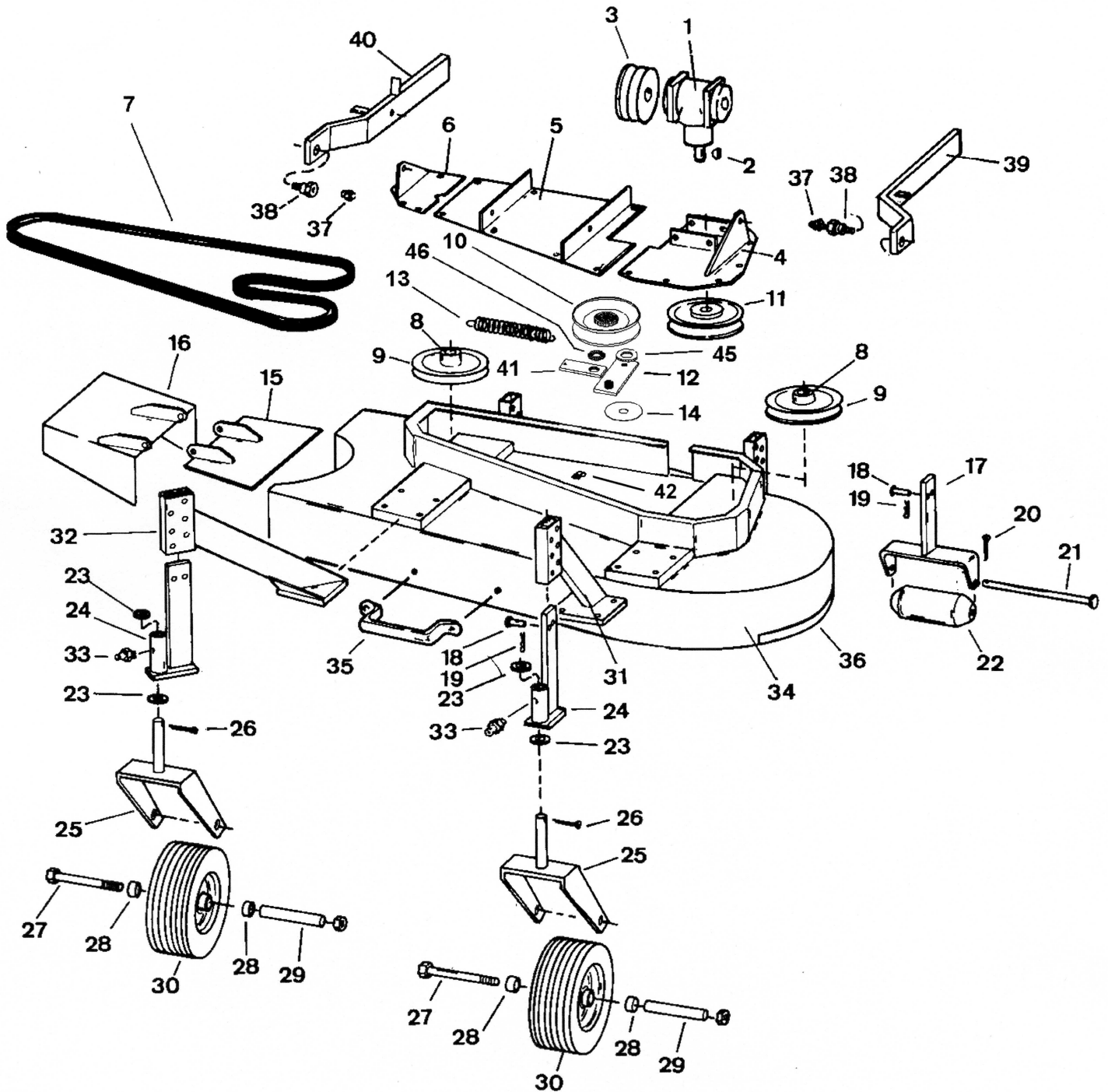
## SINGLE BOLT SPINDLE



REF. #	PART NUMBER	DESCRIPTION	QUANTITY
1	300-466	3/8-24 X 1 HHCS	1
2	300-480	3/8 LOCK WASHER	1
3	300-173	WASHER	1
4	300-407	SOCKET HEAD CAP SCREW	3
NOT SHOWN	300-437	SET SCREW	2
5	400-264	PULLEY	1
6	400-263	SPINDLE HUB	1
7	300-278	MACHINE BUSIHING	1 OR MORE
8	400-363	BEARING	2
9	400-366	SPACER	1
10	400-464	SPINDLE HOUSING	1
11	400-257	SNAP RING	1
12	400-465	SPINDLE SHIELD WASHER	1
13	300-288	KEY	1
14	400-466	SPINDLE SHAFT	1
15	400-468	WASHER	1
16	300-212A	ZERK	1
17	400-469	BLADE BOLT	1
18	300-663	BLADE	1
19	300-431	1/4 LOCK WASHER	3
20	300-517	5/8 LOCKWASHER	1
	400-473	COMPLETE SPINDLE, LESS BLADE	
	400-473-48	COMPLETE SPINDLE WITH BLADE	



## 48 DECK PARTS



## 48 DECK PARTS

REF.	PART	DESCRIPTION	QUANTITY	REF.	PART	DESCRIPTION	QUANTITY
1	300-695	GEARBOX	1	28	400-234	BEARING	4
		5/16 X 1 HHCS	4	29	300-117	SPACER	2
		5/16 LOCKWASHER	4	30	300-247	WHEEL&TIRE	2
2	300-289A	KEY	2		400-212A	REPLACEMENT TIRE	
3	400-179	PULLEY	1		400-233	REPLACEMENT WHEEL	
4	400-160	LEFT SHIELD	1	31	300-274	LH CASTOR ARM	1
		5/16 X 1 HHCS	7	32	300-273	RH CASTOR ARM	1
		5/16 LOCKWASHER	7			3/8 X 1 3/4 HHCS	8
5	400-161	MIDDLE SHIELD	1			3/8 LOCKWASHER	8
		5/16 X 3/4 HHCS	8			3/8 NUT	8
		5/16 LOCKWASHER	8	33	300-212B	GREASE FITTING	2
6	400-159	RIGHT SHIELD	1			(LH BOLT)	
		5/16 X 1 HHCS	5	34	400-311	DECK HOUSING	1
		5/16 LOCKWASHER	5	35	400-998	HANDLE	1
7	300-679	DECK BELT	1			1/4 X 3/4 HHCS	2
8	400-263	PULLEY HUB	2			1/4 LOCKWASHER	2
9	400-264	SPINDLE PULLEY	2			1/4 NUT	2
	300-407	SHCS	6	36	100-280	RUB BAR	1
		1/4 LOCKWASHER	6			5/16 X 3/4 HHCS	2
		3/16 FLATWASHER	6			5/16 LOCKWASHER	2
10	700-534	VEE-IDLER	1			5/16 NUT	2
	300-585	5/8 - 18 X 1 1/2	1	37	300-212B	GREASE FITTING	2
		5/8 LOCKWASHER	1	38	300-326	PUSH ARM BOLT	2
	300-195A	SHIM WASHER	4		300-513	2-WAY LOCKNUT	2
	300-195	SHIM WASHER	1	39	400-698	LH PUSHARM	1
11	300-234	PULLEY	1	40	400-699	RH PUSHARM	1
		5/16 X 5/16 SHSS	2	41	300-735	IDLER LINKAGE	1
12	300-685	IDLER ARM	1	42	300-455	FENDER NUT	20
13	300-687	SPRING	1	45	400-121	WAVY WASHER	1
		5/16 X 1 1/4 HHCS	1	46	300-525	MACHINE BUSHING	1
		5/16 NUT	2			NOT SHOWN	
		5/16 WASHER	1		100-489	WEAR PLATE	1
14	300-706	FRICTION WASHER	2				
15	400-185	END PLATE	1				
		3/8 X 3/4 HHCS	3				
		3/8 LOCKWASHER	3				
		3/8 NUT	3				
16	400-168	FOOT GUARD	1				
		1/4 X 3/4 HHCS	2				
		1/4 LOCKNUT	2				
17	300-243	ROLLER BRACKET	2				
18	300-203	GAUGE PIN	4				
19	300-202	CLIP	4				
20	300-279	KEY	2				
21	300-201	ROLLER PIN	2				
22	100-132	ROLLER	2				
23	300-195A	SHIM WASHER	4				
24	300-395	CASTOR STEM	2				
25	300-391	CASTOR FORK	2				
26	200-238	ROLL PIN	2				
27	300-264	AXLE BOLT	2				
		1/2 NUT	2				

# DEINES MANUFACTURING CORP. LIMITED WARRANTY

Deines Manufacturing Corp., P.O. Box 266, Ransom, KS. 67572, proudly warrants to the original purchaser all products and components manufactured by Deines to be free of defects in material and workmanship.

Deines Manufacturing Corp. does not warrant trade accessory items (batteries, engines, generators, transmission, gear boxes, etc.) which are warranted by their respective manufacturers.

Deines Manufacturing Corp. will, at its option, replace or repair without charge to the purchaser for materials or labor any component or product manufactured by Deines found upon examination by any Deines Authorized Distributor or Dealer or by Deines at its plant in Ransom, KS. to be defective in material and/or workmanship.

To obtain warranty service the component, or product must be returned to an Authorized Distributor or Dealer or to the Deines Plant, TRANSPORTATION PREPAID, accompanied by a letter stating the warranty claim. Upon receipt of a Warranty Claim Letter, Deines will within ten business days commence performance of its obligations under this Warranty.

This Warranty will commence upon the date of delivery and will extend as follows: one year for Industrial and/or Commercial applications; one year for Residential applications.

THIS WARRANTY WILL NOT TAKE EFFECT unless the Warranty Registration Card is signed and returned to the Deines Manufacturing Corp. within ten days from delivery date.

This warranty is void if the component or product is modified in any manner which Deines concludes after inspection adversely affects the reliability of the component or product; if the component or product has been repaired or serviced by anyone other than an Authorized Distributor or Dealer or the Deines Plant; if the component or product is damaged because not operated in accordance with application with applicable instructions or because of accident, misuse or abuse; if the component or product is damaged because not properly maintained as set forth in applicable instructions.

This EXPRESS WARRANTY IS IN LIEU OF ALL OTHER EXPRESS WARRANTIES. Deines neither assumes nor authorizes any other person, natural or corporate, to assume for it any other obligations or liability in connection with or with respect to any component or product.

EXCEPT TO THE EXTENT PROHIBITED BY APPLICABLE LAW, ALL IMPLIED WARRANTIES MADE BY DEINES IN CONNECTION WITH ANY COMPONENT OR PRODUCT MANUFACTURED BY IT INCLUDING WARRANTIES OF MERCHANTABILITY OR FITNESS FOR ANY PARTICULAR PURPOSE ARE LIMITED IN DURATION TO THE WARRANTY PERIODS SET FORTH IN PARAGRAPH FORTH ABOVE, AND NO WARRANTIES EXPRESS OR IMPLIED, INCLUDING WARRANTIES OF ABOVE, AND NO WARRANTIES WHETHER EXPRESS OR IMPLIED, INCLUDING WARRANTIES OF MERCHANTABILITY AND FITNESS, SHALL APPLY AFTER SAID APPLICABLE PERIOD HAS EXPIRED.

DEINES SHALL UNDER NO CIRCUMSTANCES BE LIABLE FOR ANY DIRECT, INCIDENTAL, CONSEQUENTIAL OR SPECIAL DAMAGES AND/OR EXPENSES.

The sale of this product is not subject to any implied warranties of merchantability and there are no warranties which extend beyond the description of the face hereof.

This warranty gives you specific legal rights. You also have implied warranty rights. In the event of a problem with this warranty service or performance, you may be able to go to a small claims court, a State Court, or a Federal District Court.