



Yes, you can.®



vacare® Mirage™

service manual



Introduction

- This manual provides basic details to enable the Invacare® *MIRAGE*™ Wheelchair to be maintained. It is not intended to be a comprehensive maintenance guide/policy, but is intended for use by competent personnel to enable the chair to be adequately maintained.

- The wheelchair is manufactured by:

INVACARE Ltd
South Road
Bridgend Industrial Estate
Bridgend
Mid-Glamorgan
CF31 3PY

Sales Telephone: 01656 647327
Sales Fax: 01656 649016
Technical Services Fax: 01656 753299
Email: uk@invacare.com
Web: <http://www.invacare.com>

- For TECHNICAL ADVICE, repairs, servicing, contact Technical Services.
For SPARE PARTS orders contact Sales.
- Quote the following details at all times:
 - Part Number (see Spare Parts Catalogue)
 - Description
 - Quantity required
 - Serial Number
 - Chair Type

Policy

INVACARE Ltd Policy is as follows:

- Repairs to any component other than those detailed in this manual are not covered. Repairs to any tube metal work is not generally permitted without express permission of INVACARE Ltd. All fasteners i.e. bolts, Nyloc nuts, and any fastener showing damage must be renewed.
- Under no circumstances attempt to repair a crash damaged chair. Contact Technical Services for further Information.
- Alterations to the wheelchair which occur as a result of incorrectly or improperly executed maintenance or overhaul work lead to the exclusion of all liability on the side of INVACARE.
- We reserve the right to make any alterations on the grounds of technical improvements.
- Information about operation or about general maintenance and care work should be taken from the wheelchair Operating Manual.

Failure to comply with the above absolves INVACARE Ltd of liability.

Note: Certain components will require removal to carry out maintenance. With the exception of fasteners, those components should be refitted.

Notes on transport

- If the wheelchair has to be shipped back to the manufacturer for major repairs, you should always use the original packaging for transport.
- You should also include as accurate a fault description as possible.

Information Symbols



Note: This symbol identifies general information which indicates special points or simplifications in dismantling / reassembly.



CAUTION: It is imperative that you observe any safety instructions identified with this symbol.



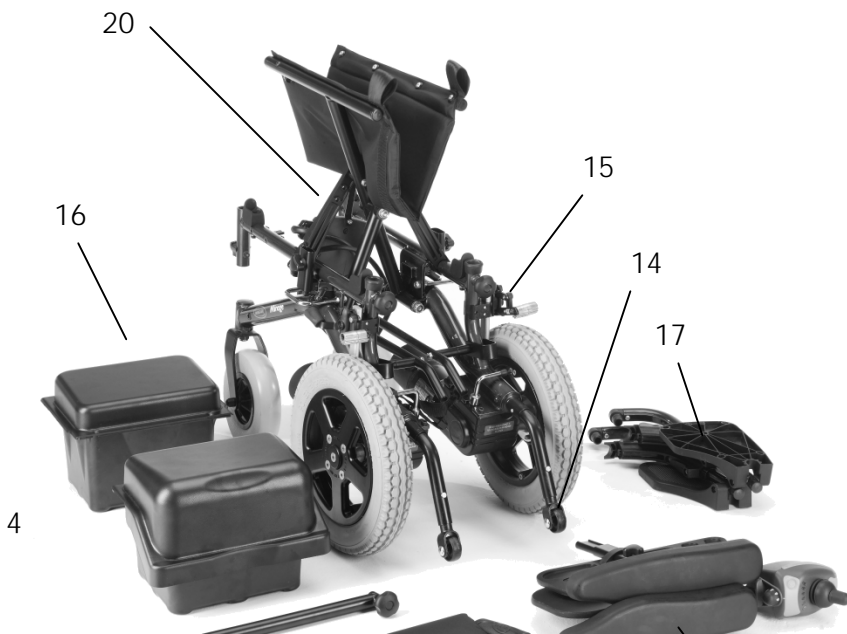
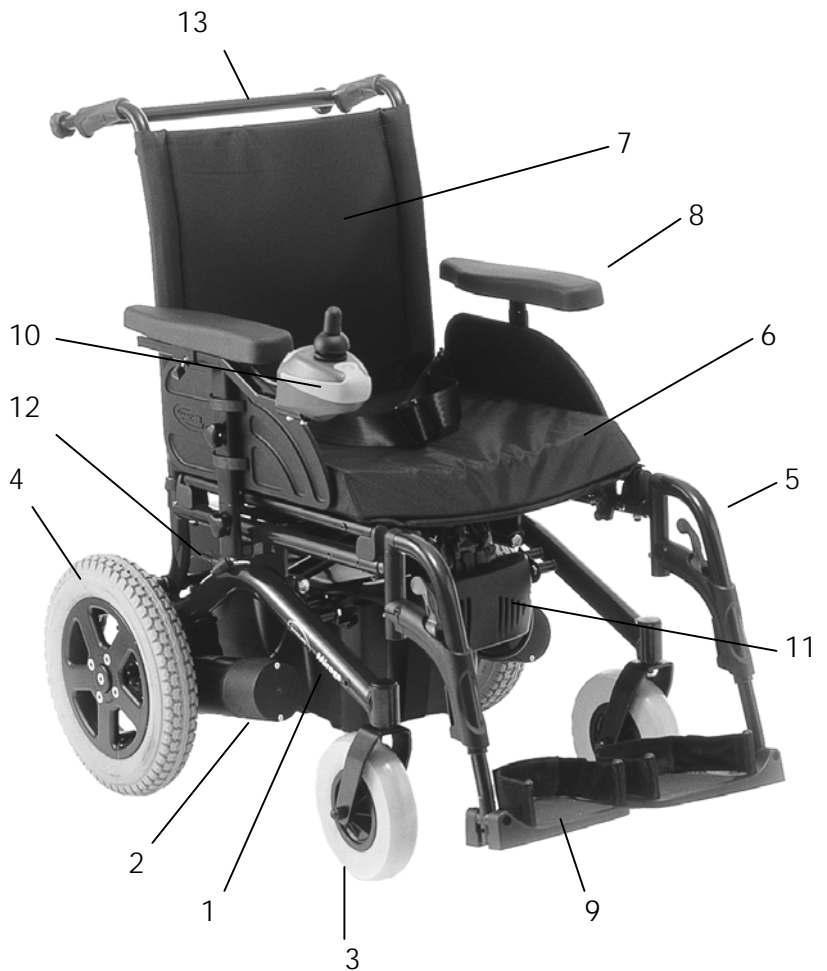
This symbol identifies service work or tools required.

Contents

	Section	Page
1	Layout of Modules, Components and Controls	4
2	Safety and Assembly Instructions	5
3	Tools Required	6
4	Armrests	7
5	Legrests	9
6	Upholstery, Seat and Back	11
7	Castor Wheel and Fork	12
8	Rear Wheel	14
9	Frame and Chassis	16
10	Motor Assembly	18
11	Gearbox Assembly	20
12	Control System	22
13	Batteries and charger	24
14	Mechanical Brakes	26
15	Fault Diagnostics	27
16	Servicing Requirements	32

1 Layout of Modules components and controls

- 1 Main Frame
- 2 Motor Gearbox
- 3 Front Castor Wheel
- 4 Rear Drive Wheel
- 5 Legrest
- 6 Seat
- 7 Backrest
- 8 Armrest
- 9 Footplate
- 10 Shark Remote
- 11 Shark Power Module
- 12 Battery Boxes
- 13 Back Brace



- 14 Anti Tipper Wheels
- 15 Mechanical Brakes
- 16 Batteries (Removed)
- 17 Legrests (Removed)
- 18 Armrests (Removed)
- 19 Backrest (removed)
- 20 Folded Chassis

2 Safety and assembly instructions

These safety instructions are intended to prevent accidents at work and it is imperative that they are observed.

2.1 Before any inspection or repair work

Read and observe this repair manual and the associated operating manual.



Caution:

- Please note the heavy weight of some components. This applies especially to the removal of drive units and batteries.
 - The wheelchair must be switched off before removal of voltage-carrying components.
 - To do this, disconnect the batteries or remove them.
 - When making measurements on voltage-carrying components, avoid short-circuiting the contacts.
 - Danger of fire and combustion!
-

2.2 During dismantling/reassembly

Mark all current settings for the wheelchair (seat, armrests, backrest etc.), and the cable connecting plugs associated, before any removals. This makes reassembly easier.



Caution:

- Prop up the wheelchair with appropriate supports before starting the disassembly or assembly.
 - Never use standard nuts instead of self-locking nuts. .
-



Note:

- All plugs are fitted with mechanical latches which prevent release of the connecting plugs during operation.
 - To release the connecting plugs the latches must be pressed in.
 - When reassembling ensure that the latches are correctly engaged.
-

2.3 Before operation / after completion of work:



Caution:

- Check all fixings for tight fit.
 - Only operate wheelchair with correct tyre pressure.
 - Check electrical components for correct functioning, incorrect polarity of cables can result in damage to the electronics.
 - As a last check, always carry out a trial run.
-

3 Tools Required

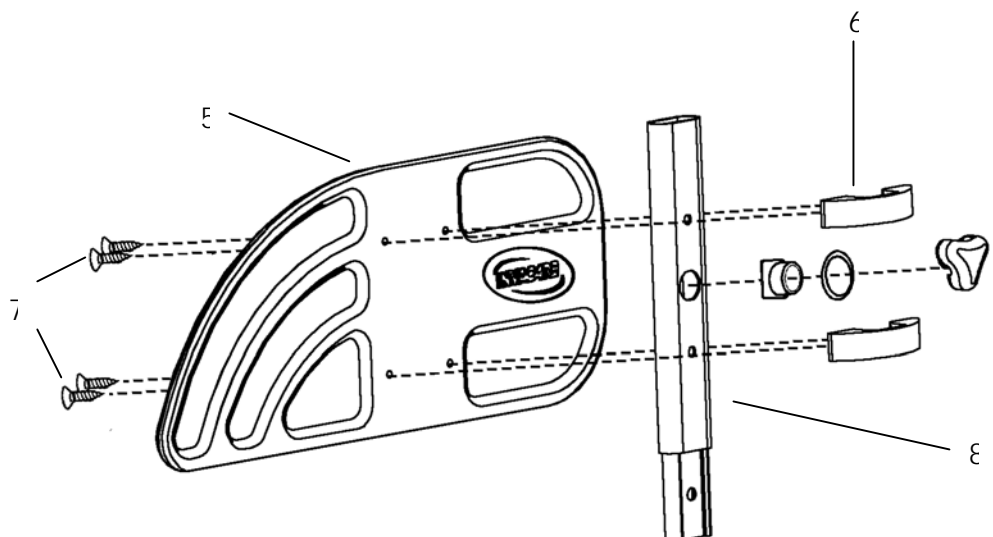
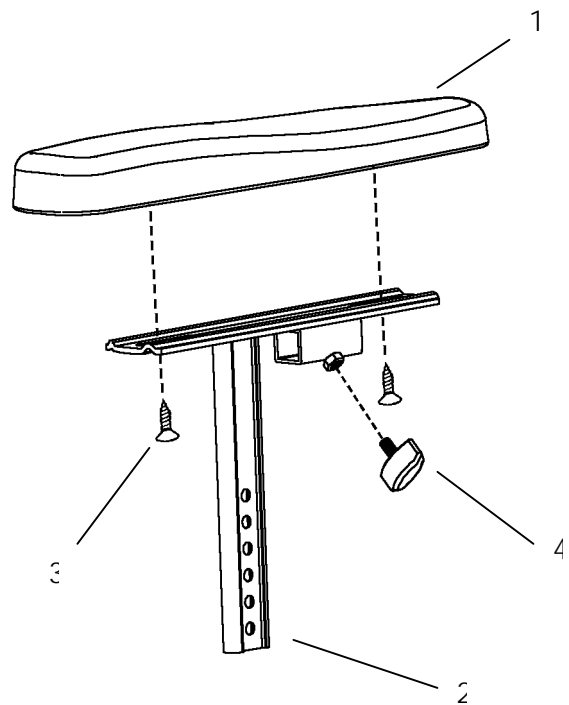
The following list gives the basic tools required to perform the maintenance procedures as illustrated in this manual.

- 1 - Open Ended Spanner (7mm)
- 2 - Open End Spanner (8mm)
- 2 - Open End Spanner (10mm)
- 1 - Open End Spanner (11mm)
- 2 - Open End Spanner (13mm)
- 2 - Open Ended Spanner (17mm)
- 1 - Combination Spanner (19mm)
- 1 - Socket / Wrench (Shallow) (19mm)
- 1 - Cross Point Screwdriver (No 2)
- 1 - Cross Point Screwdriver (No 1)
- 1 - Flat Bladed Screwdriver (No 1)
- 1 - Nylon Mallet
- 1 - Torque Wrench
- 1 - Hex Wrench - (3mm)
- 1 - Hex Wrench - (4mm)
- 1 - Hex Wrench - (5mm)
- 1 - Knife
- 1 - Pressure Gauge
- 1 - Pump
- 1 - Drift
- 1 - Vice
- 1 - Valve Remover
- 1 - Multimeter
- 1 - Soldering Iron
- 1 - Pin Hammer
- 1 - Punch
- 1 - Pair Pliers
- 1 - Battery Discharge Tester
- 1 - HHP - Programmer
- 1 - Shark Programming Adapter
- 1 - Safety Goggles

4 Armrests

Armrest Top - Parts

- 1 Armpad
- 2 Armrest top assembly
- 3 Armpad screws
- 4 Hand wheel



Armrest Lower - Parts

4.1 Tools Required:

1. No 2 Cross Point Screwdriver
2. Flat Headed Screwdriver

4.2 Inspection:

1. Check that the skirt guard (5) is fixed and not physically damaged. If the panel is loose retighten the fixing screws (7), install a new panel if necessary.
2. Check for armpad (1) wear or damage. Replace if necessary.
3. Check for corrosion or paint damage to the bracketry and replace affected parts where necessary.

4.3 Disassembly / Assembly

1. Release the hand wheels (11) by rotating anti-clockwise.
2. Remove the top and lower armrest assemblies.



Armrest Top Assembly

1. Remove the hand wheel (4).
2. Release the screws (3) with a No2 Cross Point Screwdriver to remove the armpad.



Armrest Lower Assembly

1. Remove screws (7) with a Cross Point Screwdriver and take away skirt guard (5) and clamps (8).
2. Remove hand wheel (11).
3. Push fixing nut (9) into tube, to release plastic ring and remove both from armrest lower tube.

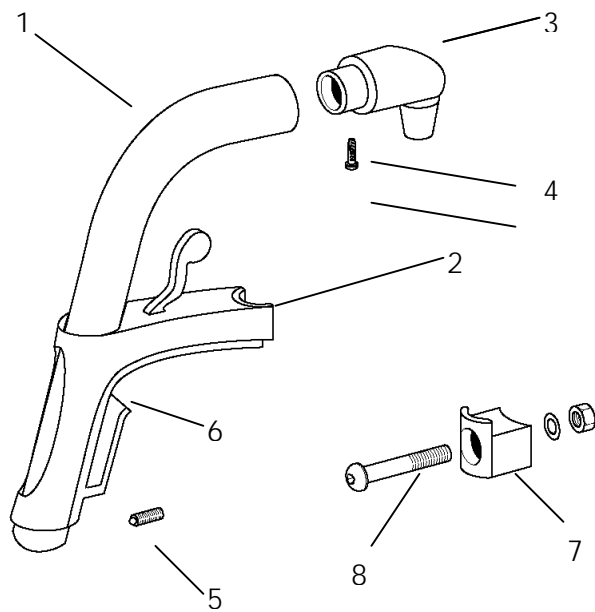
4. Repeat step 3, for armrest socket fixing nut.

To re-assemble reverse the above steps taking care not to over tighten the fixing screws.

5 Legrests

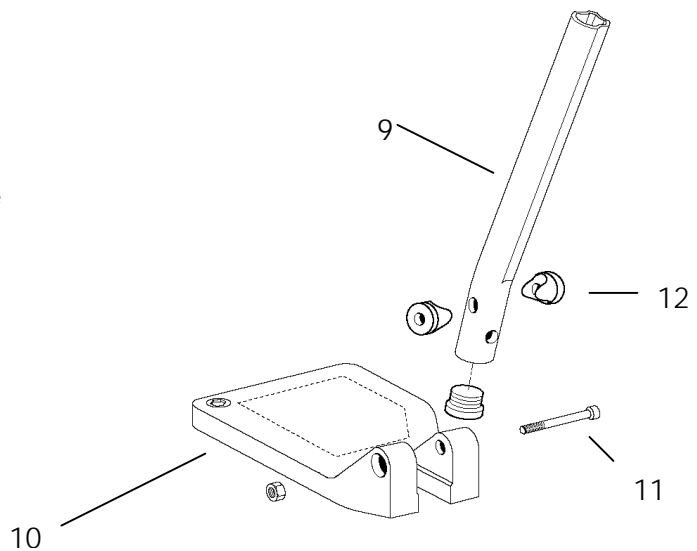
Legrest Hanger - Parts

- 1 Hanger tube
- 2 Hanger support Assy
- 3 Hanger pivot
- 4 Screw
- 5 Screw
- 6 Screw
- 7 Hanger Lock
- 8 Hanger Lock screw and nut



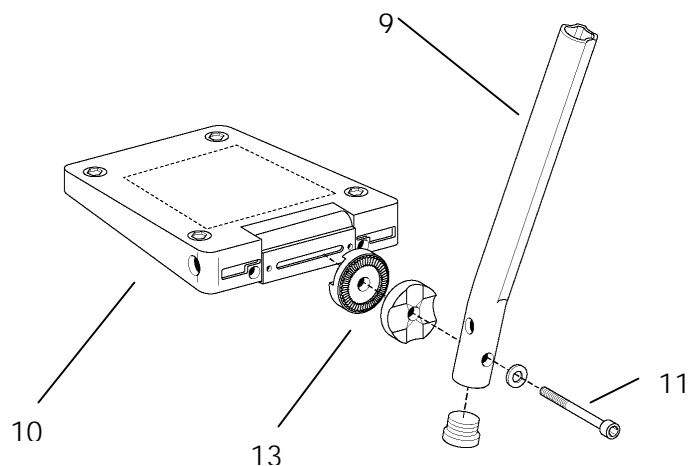
Standard Footplate - Parts

- 9 Lower footplate tube
- 10 Footplate
- 11 Screw
- 12 Spacers



Adjustable Footplate – Parts

13 Adjustment Fixings



5.1 Tools Required:

- No 2 Cross Point Screwdriver
- 5mm Hex Wrench
- 10mm open ended spanner
- Mallet

5.2 Inspection:

1. Check that the footplate fits securely and operates correctly.
2. Check the operation of the footplate extension, clamping and adjustment screw (5).
3. Check the legrest for damage.
4. Check the hanger lock for damage or excessive wear (7).

5.3 Disassembly / Assembly

1. Operate the legrest release mechanism and remove from the wheelchair.
2. Release the height adjustment screw (5) and slide the lower footplate tube from the hanger. Use a mallet to gently tap the footplate if the tube will not move.

Hanger

1. Remove screws (5) and (6) using a 5mm Hex Wrench.
2. Slide Hanger support assembly (2) over the end of the hanger tube (1). Gently tap with a mallet if it will not move.
3. Remove screw (4) with a No 2 Cross Point screwdriver and slide out hanger pivot (5)

**Note:**

It is NOT possible to disassemble the Hanger support (2).

**Footplates (Standard and Adjustable)**

1. Remove screw (11) using a 5mm Hex Wrench.
2. Separate the footplate (10) from the lower legrest tube (9).
3. Take care not to damage the spacers (12) or adjustment fixings (13) if fitted.

**Hanger Locks**

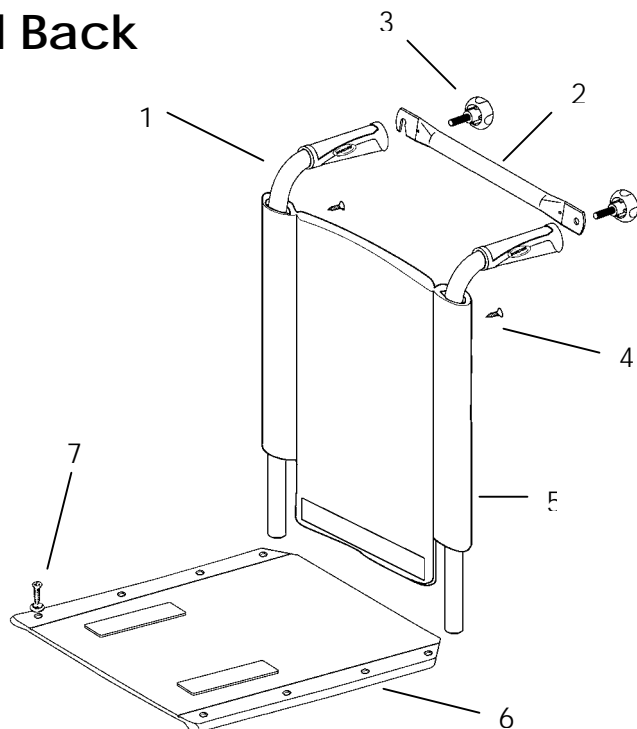
1. Remove fixing screw and nut (8) using a 10mm spanner.
2. Remove Hanger (7) Lock from wheel chair.

To re-assemble reverse the above steps taking care not to over tighten the fixing screws.

6 Upholstery Seat and Back

Parts

- | | |
|---|-----------------|
| 1 | Backpost |
| 2 | Push Bar |
| 3 | Hand wheel |
| 4 | Screw |
| 5 | Back Upholstery |
| 6 | Seat Upholstery |
| 7 | Screw |

**6.1 Tools Required:**

- No 2 Cross Point Screwdriver

6.2 Inspection:

1. Check that the upholstery (5) (6) does not excessively sag, is unevenly stretched, worn or torn. Pay particular attention to buckles and straps inside tension adjustable back upholstery.
2. Check that all stitches are in good condition.
3. Check that all screws and washers (4) (7) are in good condition and are not burred.

6.3 Disassembly / Assembly



1. Release the hand wheels (3) by rotating anti-clockwise and remove push bar (2).

Note:

- Remove backrest from the wheelchair at this point if not already removed.
-

2. Remove screws (7) in order to remove seat upholstery (6). Pay attention to the fixing position for a Lapbelt (if fitted).

3. Remove screws (4) and slide off back upholstery. If a tension adjustable back is fitted, remove the back cushion first which is held on by hook and loop fastening strip.

Note:

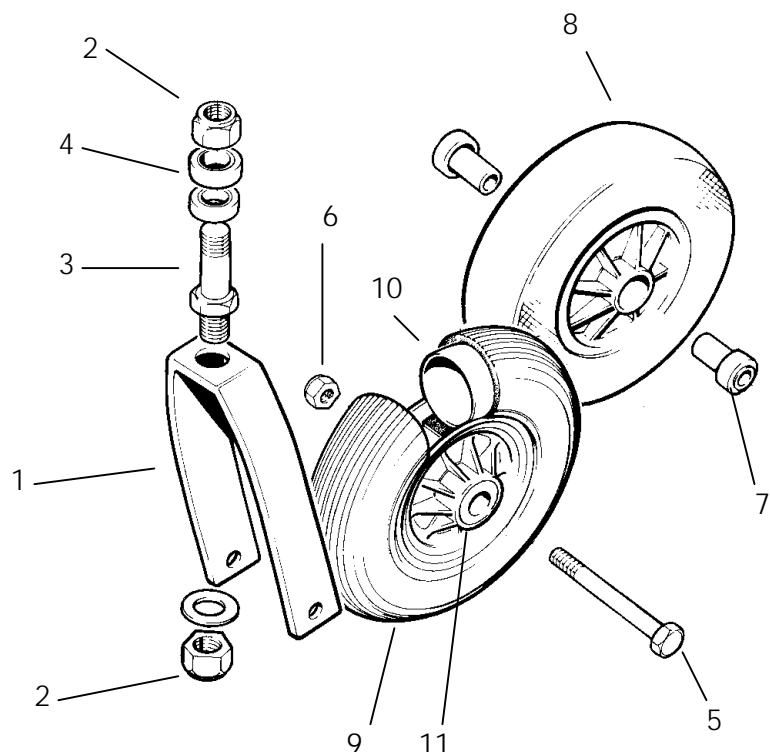
- If a recliner back is fitted, it may be necessary to remove the gas spring and lower section of the back post to completely disassemble the upholstery
-

To re-assemble reverse the above steps, ensuring that the fixing holes in the upholstery and tubes are aligned. Take care not to over tighten the fixing screws.

7 Castor Wheels and Forks

Parts

- | | |
|----|--------------|
| 1 | Castor Fork |
| 2 | Nut |
| 3 | Fork stem |
| 4 | Bearings |
| 5 | Axle bolt |
| 6 | Axle nut |
| 7 | Bearing |
| 8 | Castor wheel |
| 9 | Tyre |
| 10 | Inner tube |
| 11 | Hub centre |



7.1 Tools Required:

- 19mm Open Ended Spanner
- 19mm Socket / Wrench
- 13mm Open Ended Spanner x 2
- Flat Bladed Screwdriver
- Mallet
- Pressure Gauge
- Pump
- Drift

7.2 Inspection

1. Check castor wheels are not buckled or physically damaged. Replace if required.
2. Check that the wheel bearings (7) run freely without excessive play.
3. Check that the castor wheel and fork nuts (2) are tight.
4. Check that the castor forks (1) are bent or damaged.
5. Check the crown/castor fork bearings (4) for wear and correct adjustment.
6. Check tyres for wear and correct inflation. Both wheels should show the same degree of wear (see side of tyre pressure rating). For tyre fitment see rear tyre section.

7.3 Disassembly



1. Remove castor socket cap with flat bladed screw driver, hold the lower fork stem nut (2) secure with 19mm spanner and remove the upper fork stem nut (2).
2. Gently tap the threaded end to the fork stem (3) with a mallet taking care not to damage the threads. Remove the castor fork assemblies
3. Lever out the top fork bearing (4) carefully, using the fork stem as a lever. Take care not to damage the threads.
4. Remove the lower fork bearing (4) using a drift and a mallet, tapping gently to avoid damaging the bearing.
5. To remove the castor wheels undo the axle nut (6) with a 13mm spanner using a second spanner at the other end of the axle bolt (5) to lock against rotation. Remove the axle bolt and remove the wheel from the fork.
6. Remove the bearings (7) by hand.

7.4 Assembly



1. To reassemble the wheel reverse step 5 & 6, but adjust tightness of nut until the wheel runs freely to a gradual halt.



Note:

- If the wheel stops abruptly, loosen the castor axle nut.

- If the wheel wobbles (side play), tighten the castor axle nut enough to allow free spinning without side play.

2. Insert the fork stem bearings (4) using a mallet and drift across the bearing to prevent damage.
3. Start at the bottom and place the threaded end of the fork stem (3) through both bearings (4) and into the castor fork socket.
4. Locate fork stem nut (2) on the threaded end of the stem and tighten with a 19mm spanner just enough to allow the fork to swivel freely.
5. To check for correct tightness, perform the following test:
 - Tip chair backwards and rest the push handles on the floor (remove the battery boxes first).
 - Raise castor wheel towards ceiling, then gently push downward to either side. The wheel and fork should freely rotate down and hang straight towards the floor after a pendulum-type swing.



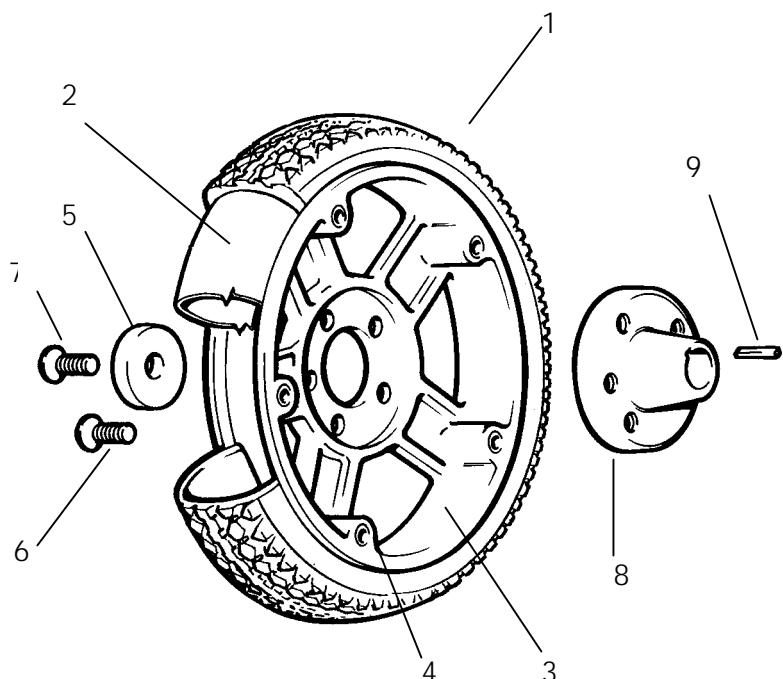
Note:

- If the wheel stops angled to one side, loosen the fork stem nut slightly.
- If the wheel continues to swing to both sides (like a pendulum), tighten the fork stem nut slightly.
- Check the bearings for excessive play by gently rocking the fork assembly.

8 Rear Wheel

Parts

- 1 Tyre
- 2 Inner Tube
- 3 Inner Rim
- 4 Outer rim
- 5 Screws
- 6 Washer
- 7 Wheel Bolts
- 8 Motor shaft
- 9 Bolt
- 8 Wheel Hub



8.1 Tools Required:

1. 5mm Hex Wrench
2. Mallet
3. Pressure Gauge
4. Pump
5. Vice
6. Valve Remover
7. Flat Bladed Screwdriver
8. Torque Wrench

8.2 Inspection

1. Check wheel is not buckled or physically damaged. Replace if required.
2. Check tyres for wear and correct inflation, both wheels should allow the same degree of wear (see side of tyre for pressure rating).

8.3 Disassembly



Caution:

- Take care while supporting the wheelchair in order to remove the wheel.
 - The Batteries should be removed before continuing with this procedure.
-



1. Jack up one of the gearboxes to lift one wheel off the floor.
2. Remove the four Wheel Bolts (6) securing the Wheel to the Wheel Hub (8) using a 5mm Hex Wrench. Remove the Wheel.
3. Deflate the tyre (1), locate, loosen and remove Socket Head Cap Screws (4) securing the two halves of the Wheel Rims (3) together using a 5mm Hex Wrench.



Caution:

- Ensure the tyre is fully deflated before attempting to separate to the two halves of the Wheel Rims.
-

4. Remove the tyre (1) and tube (2).
5. To remove the Wheel Hub from the Axle Shaft locate loosen and remove the Motor shaft Bolt (7) and washer (5) that secures the Wheel Hub to the Axle Shaft using a 5mm Hex Wrench.
6. Gently tap the end of the Axle Shaft with a mallet and pull the hub (8) off the gear box shaft (take care not to loose the key (9) located in the gearbox shaft).

8.4 Assembly



1. Re-fit the Wheel Hub (8) to the gearbox shaft ensuring alignment of the keyway of the wheel centre to the key (9) fitted to gearbox shaft. Gently tap the wheel centre with a mallet until the threads can be seen inside the shaft.
2. Fit the motor shaft bolt (7) using a 5mm Hex Torque Wrench, ensuring that the washer (5) has been fitted, to the gearbox shaft.

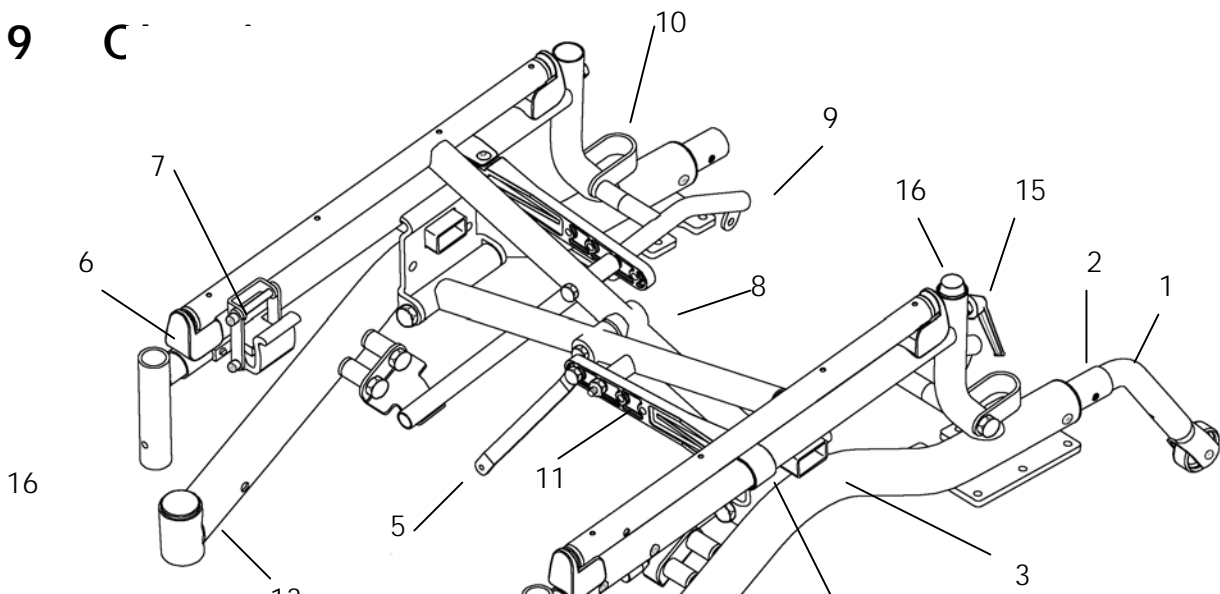
Note:

- Torque rating of rear wheel bolt = 35 – 40Nm.
-

3. Locate tyre (1) and tube (2) to the face of the inside Rim (3) that has the hole for the valve to sit in, slightly inflate the tube.
4. Locate the other half of the Wheel Rim (3) in position, insert Socket Cap Screws (4) in position and proceed to tighten the screws. Ensure the inner tube is not trapped between the Wheel Rim halves.
5. Tighten securely Socket Head Cap Screws (4) using a 5mm Hex Wrench.
6. Inflate to the correct pressure as indicated on the Tyre Side Wall.
7. Position Wheel on Wheel Hub, locate and tighten the four Wheel Bolts (6) using a 5mm Torque Hex Wrench

Note:

- Torque rating of rear wheel bolt = 35 – 40Nm.
-



Parts :

1	Anti Tipper	9	Battery Rail
2	Anti Tipper Socket	10	Rear Tie Down Clamp
3	Side Frame LH	11	Seat Stay
4	Hanger Bracket	12	Plastic Side Frame
Fittings			
5	Control Module Bracket	13	Side Frame RH
6	Seat Saddle	14	U Bracket
7	Seat Clamp	15	Handwheel
8	X-Brace (Seat Frame)	16	Backrest Insert

9.1 Tools Required:

- 8mm Open Ended Spanner x 2
- 10mm Open Ended Spanner x 2
- 13mm Open Ended Spanner x 2
- 17mm Open Ended Spanner x 2
- 4mm Hex Wrench
- 5mm Hex Wrench
- Flat Bladed Screwdriver
- Mallet

9.2 Inspection

1. Check all tubing for misalignment, damage or bending of the frame or crossbar assembly.
2. Check that no misalignment is present at the castor mount area (castor fork and socket).
3. Check all brazed/welded joints for fractures or damage. Check the paint finish for damage.
4. Check the crossbar assembly is not damaged (pivot bolt should not be over-tightened).
5. Check that the chair folds easily and that the crossbar pivots and folding mechanisms operate correctly.

9.3 Disassembly

Note:



- Remove batteries, backrest, legrest and armrest before proceeding with the following. It is optional to remove the wheels or motors before proceeding with the following.

- See Section 11 for information on how to remove motor gearbox.

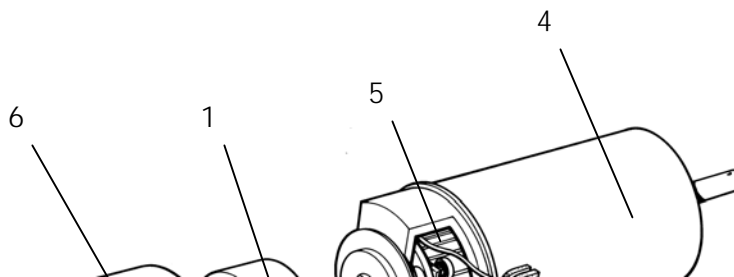


1. Push buttons on the side of anti tipper socket (2) and remove anti tipper (1).
2. The anti tipper bottom section may be removed from the tube by using 2 x 8mm open ended spanners and completely removing the bolt.
3. The anti tipper sockets (2) can be removed by using a 10mm open ended spanner and a 4mm Hex Wrench. Completely remove the bolt and slide out anti tipper socket from the side frames (3 and 13).
4. Remove hand wheel (15) and withdraw backrest insert (16)
5. If the seat clamp (7) is locked, unlock both right and left hand side and fold wheelchair frame.
6. Remove the Hanger Bracket (4). Use a 10mm open ended spanner and 5mm Hex Wrench to completely remove the 2 socket head screws in the side frames and the bottom section of the seat clamp (7). Use a 4mm Hex Wrench and a 10mm open ended spanner to remove the front seat saddle (6). Slide hanger bracket out from the side frame.
7. Use a flat blade screw driver to carefully lever out the plastic frame fittings (12).
8. Locate X Brace (8) and seat stays (11).
9. Using a 4mm Hex Wrench and 10mm open ended spanner, remove the bolts which clamp the U brackets (14), seat stay (11) and side frames (13 and 3). Remove the U bracket (14).
10. Locate the Large Bolts at the bottom of each side of the X Brace (8). Remove the bolts using 2 x 17mm open ended spanners.
11. Remove the X Brace (8) from the side frames (3 and 13).
12. The X Brace (8) may be further disassembled.
 - Push the bearings out from the short bottom tubes of the X Brace.
 - The Seat Stays (11) may be removed by using 2 x 10mm open ended spanners and removing the bolt and spacer which supports them.
 - The X Brace centre pivot may be disassembled by using 2 x 13mm open ended spanners and removing the bolt and spacers.
 - Remove the Seat Clamp (7) by using a 10mm open ended spanner and 5mm Hex Wrench.
13. The battery rails (9) can be removed by using 2 x 13mm open ended spanner (at the rear) and a 13mm open spanner at the front positions. Completely withdraw the rear bolt to remove the rear tie down clamp (10) and spacers.
14. The rear seat saddles (6) can be removed using a 10mm open ended spanner and 4mm Hex Wrench.

9.4 Assembly

To re-assemble reverse the above steps, ensuring that all fixing holes in are aligned. Take care not to over tighten the fixing screws.

10 Motor



Parts :

- 1 Electro
Magnetic Brake
- 2 Brush
- 3 Connector
- 4 Motor Complete
- 5 Commutator
- 6 Motor Fnd Can

10.1 Tools Required

- No 1 Cross Point Screwdriver
- Flat Headed Screwdriver
- Soldering Iron
- Multimeter
- 3mm Hex Wrench

10.2 Inspection



1. Check motor assembly for damage.
2. Set multimeter to continuity test. Test continuity of motor leads (3) and electro-magnetic brake leads (3). Brake resistance should read 50ohms - 80 ohms.
3. Check all joints for bad connection, cracked or dry solder joints and oxidation.
4. Check that all the brushes (2) can move freely in the brush guides with no obstruction (this can be easily done by pulling on the free brush feeder wire).
5. Check that all the brushes (2) are not chipped, cracked or worn.
6. Check that the brush (2) spring is positioned to the centre of the brush body to apply even force. Also check the brush spring tensions.
7. Check the condition of the brush (2) feeder wire and check that the termination screws are secure.
8. Visually inspect the commutator (5) for carbon deposits and remove with a soft brush.

Note:



- Ensure all the segments of the commutator are not bridged with conductive materials (i.e. Carbon or Copper)
-

10.3 Disassembly

Caution



- Disconnect the battery and the motor from the power module before proceeding with this instruction.
-



1. Remove the motor end (6) via the two cross point screws using a No 1 cross point screw driver.
2. Remove the two/three electro magnetic brake (1) fixing screws and remove the brake.
3. Remove the brush (2) feeder wire termination screws, release the brush springs and remove the brushes (2).

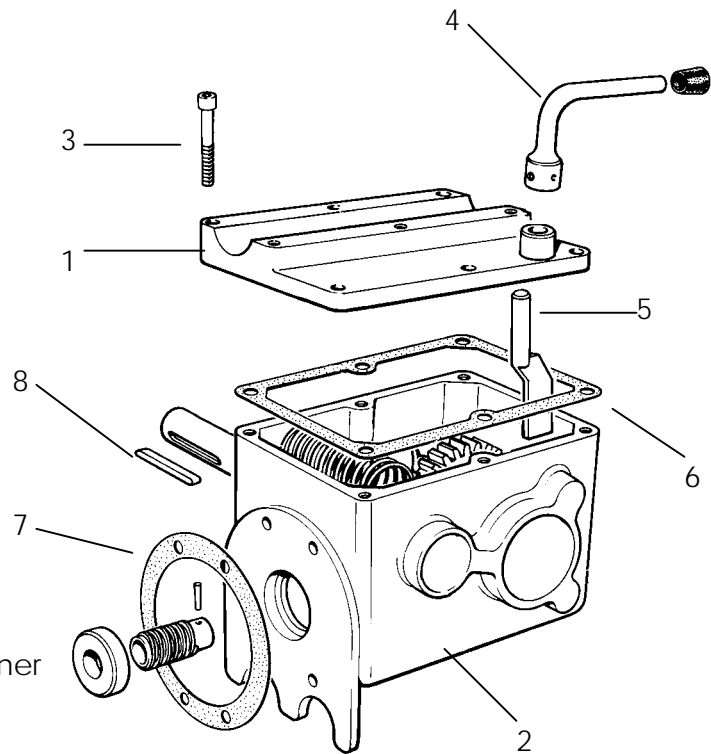
10.4 Assembly

1. To reassemble reverse the steps 1 to 3, taking care not to damage the brushes and ensuring correct alignment of the electro-magnetic brake.
2. Should there be fitting, scoring or wear then replace the Motor Unit.

11 Gearbox

Parts :

- 1 Gearbox Top
- 2 Gearbox Housing
- 3 Screws
- 4 Clutch Lever Upper
- 5 Clutch Lever Lower
- 6 Gearbox Top
- Gasket
- 7 Motor / Gearbox
- 8 Gasket



11.1 Tools Required

- 5mm Hex Wrench
- 8mm Open Ended Spanner
- Pin Hammer
- Punch
- Pliers
- Vice

11.2 Inspection

1. Check casing for cracks or damage or leakages.
2. Check Gearbox for noises (gears and bearings).
3. Check the declutching lever (4) and mechanism engages and disengages correctly.
4. Check that the output shaft of the gearbox is not damaged or bent. Remove the rear wheel and inspect the key (8) and keyway for wear and correct fitting.

11.3 Disassembly

Caution:



- Before proceeding with this instruction, remove the batteries from the wheelchair.
- Remove the rear wheel from the gearbox (See Section 8).



1. Unplug the motor from the Power Module. Loosen and remove the six Screws (3) which hold the motor gearbox to the side frames of the wheelchair using a 5mm Hex Wrench.

2. Remove the motor gearbox and then locate and remove the remaining two screws (3) from gearbox lid (1). The lower housing of the gearbox (2) will now detach from gearbox top.
3. To dismantle the declutching lever upper (4) and lower (5) parts, knock out the fixing pin using a pin hammer and punch, separate the two halves.
4. To detach the gearbox from the motor, degrease the gearbox, remove the four fixing screws with an 8mm spanner, taking care not to deface or damage any gear teeth. Separate the gearbox and motor assembly.

11.4 Assembly



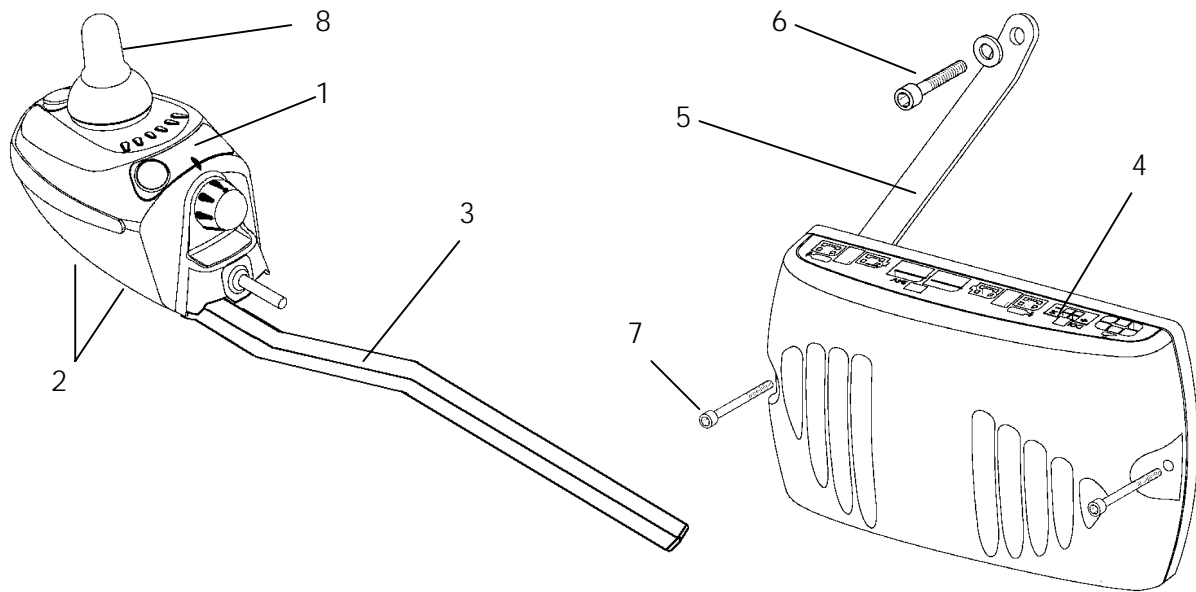
1. To reassemble reverse steps 2 to 5 ensuring correct motor to gearbox alignment is achieved.
2. Replace both gaskets (6 and 7) and re-pack the gearbox with 'Shell Albida' Grease (approx. 200g)

Note:



- To aid assembly it may be necessary to hold the gearbox housing (2) or gearbox top (1) in a vice. Take care not to damage the parts.
-

12 Control System



Parts :

1 Shark Joystick Remote
Bracket
2 Screws
3 Control Arm

5 Power Module
6 Screw
7 Screw

12.1 Tools Required

- 3mm Hex Wrench
- 5mm Hex Wrench
- 7mm Open Ended Spanner
- 8mm Open Ended Spanner
- 10mm Open Ended Spanner

12.2 Inspection

1. Check for any physical damage to the outer case of Joystick Remote (1) and Power Module (5).
2. Inspect the rubber gaiter around the joystick knob (8) for any cracks, splits or perishing. This would enable water or moisture to access the unit. This may cause damage to the controller.

3. Check speed control knob is secure and its action is free and easy in rotation.
4. Check the wire harness from the joystick remote (1) is free from damage.

12.3 Disassembly

Caution:



- Before any work is carried out on the control system, ensure the Shark Power Module (4) is unplugged from the Batteries, and the Batteries are disconnected.



Joystick Remote

1. Unplug the shark remote (1) from shark power module (4).
2. Depending on the type of control arm (3) fitted to the wheelchair, remove the screws (2) using either a 5mm Hex Wrench or 8mm Open Ended Spanner. Remove Joystick Remote
3. Remove the Joystick Knob (8) by firmly pulling upwards (if required).



Power Module

1. Unplug the remaining connectors from the power Module.
2. Remove screws (7) using a 3mm Hex Wrench and a 7mm Open Ended Spanner in one position. The Power Module is now free.
3. To remove the power module bracket (5) from the wheelchair seat stays (see section 9) remove screw (6) using a 5mm Hex Wrench 10mm open ended spanner.

12.4 Assembly

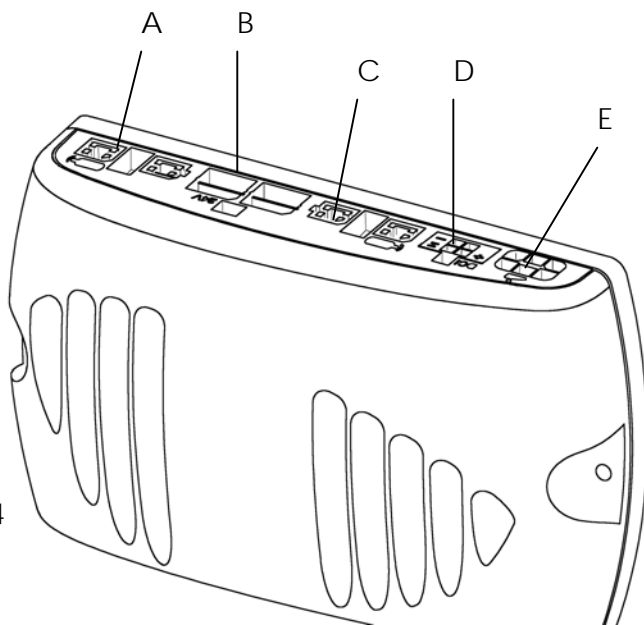
1. To re-assemble reverse the above steps, ensuring that all fixing holes are aligned. Take care not to over tighten the fixing screws.



Note:

- When fitting the joystick remote screws (2) be sure not to use a torque in excess of 2 NM.

12.5 Power Module Connector Orientation

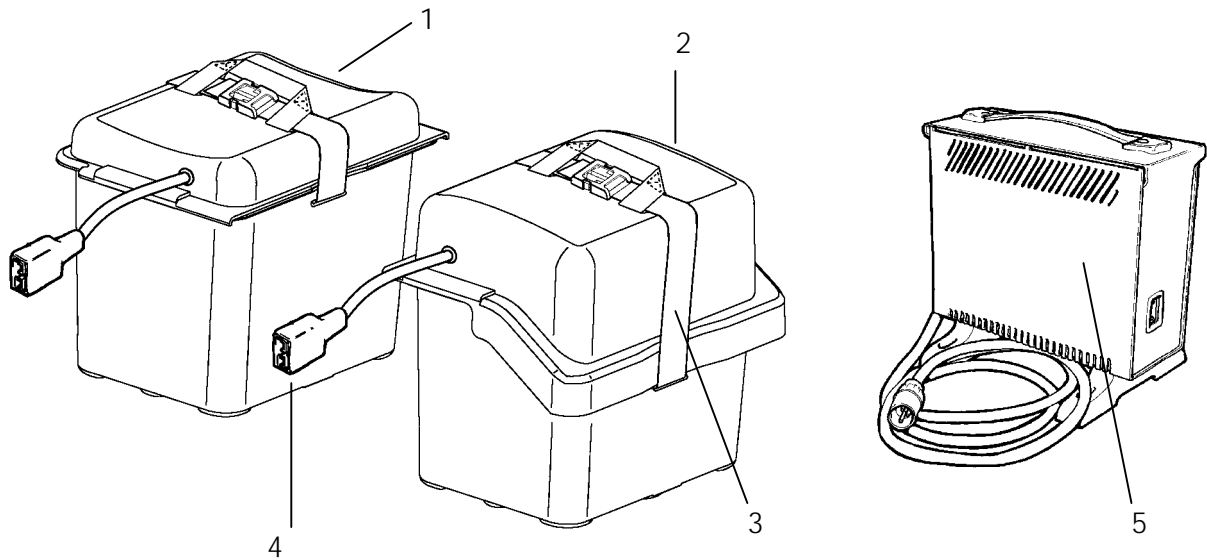


Position :

- | | |
|---|------------------------------|
| A | Motor Cable (LH Motor) |
| B | Battery Cable |
| C | Motor Cable (RH Motor) |
| D | NOT USED |
| E | Shark Joystick Remote Cable. |

All connectors are polarized and may only be fitted in one possible position

13 Batteries and Charger



Parts:

1	Front Battery Box	4	Battery Box Connector
2	Rear Battery Box	5	Charger
3	Battery Box Straps	6	Fuse / Breaker (not Shown)

13.1 Tools Required

- Pliers
- Flat Bladed Screwdriver
- 10mm Open Ended Spanner
- 11mm Open ended Spanner
- No 1 Cross Point Screwdriver
- Multimeter
- Battery Discharger
- Safety Goggles

13.2 Inspection

Caution



- Safety goggles should be worn at all times while working on batteries

- **Shock Hazard** – take care not to allow any metallic items such as tools or jewellery touch between the battery terminals.
-



1. Check that the battery box case, leads, sockets, and batteries are not damaged.
2. Measure the battery voltages, the values must be the same +/- 0.2v. If not replace the batteries.
3. For the battery charger operate, the battery voltage must be shown above 8v each. If not the batteries must be removed and charged with an unregulated charger until the voltage reaches 9v. Re-connect the batteries and charge through a complete charge cycle (this may or may not recover the batteries, if not replace the batteries).
4. On completion of charge the battery voltage must read 14.20v (+/-) at 20°C or combined 28.4v.

13.3 Disassembly

1. Unplug the battery leads (4), and remove the battery wire harness (see section 12) if still present.
2. Undo the battery straps (3)
3. Unclip the battery box lids, remove the battery caps, and with a 10mm / 11mm spanner, undo the battery terminals. Remove the batteries from the cases.

13.4 Assembly

To re-assemble, reverse steps 1 to 3 and charge the battery fully.



Caution:

- Take care of the battery polarities. Never cross polarities and always refit battery caps. If any wires or insulation is damaged, ALWAYS replace before use.
-

13.5 Inspection – Battery Charger

1. Check the charger case for physical damage.
 2. Check the input and output leads and plugs for damage, cuts and wear.
 3. Check that the charging, charge complete and power on lamps are operating correctly.
 4. With an ammeter or a multimeter set to amp (range 10A) test the charging current.
-

Note:



- Ammeters must be connected in series with the battery circuit.
 - The current reading should read approximately 7amp at charge start and 0.2 amps at complete charge.
-

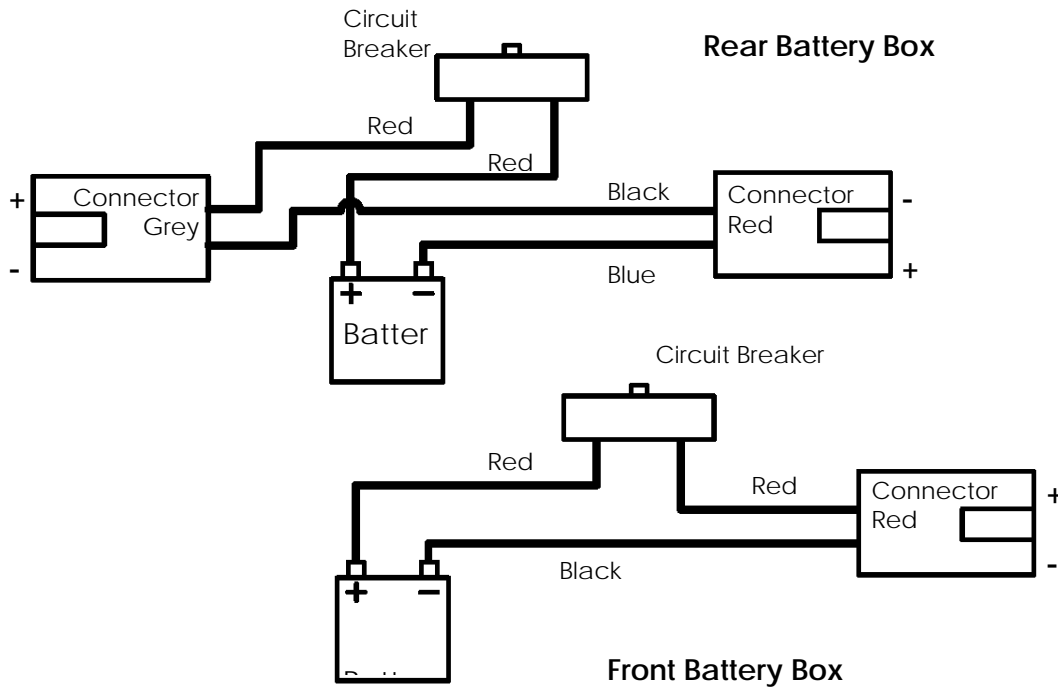
5. With a voltmeter or a multimeter, set to volts (range 30v) test the charging voltage at the battery supply (red + blue - ve wires). The reading should increase to 28.4v during charging.
-



Note:

- The battery charger is a sealed unit. Under no circumstances should it be opened.

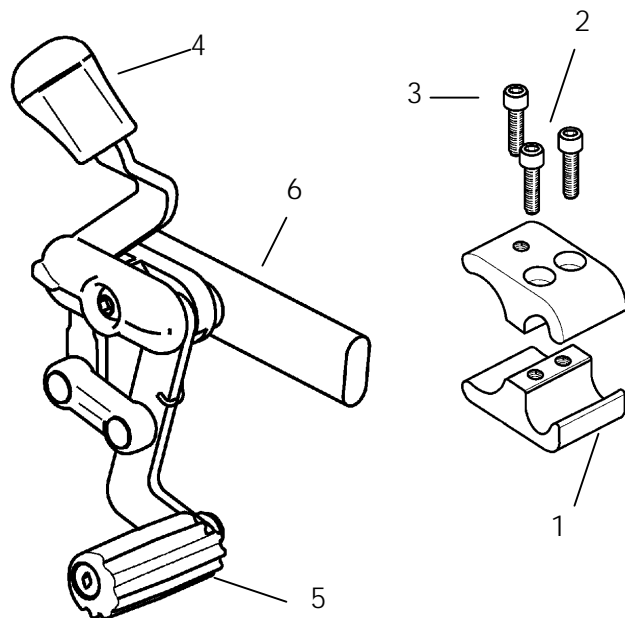
13.6 Battery Wiring Diagram



14 Mechanical Brakes

Parts :

- 1 Clamp
- 2 Screws
- 3 Anti Rotation Screw
- 4 Handgrip
- 5 Brake Shoe
- 6 Brake fixing Rail



14.1 Tools Required

- 5mm Hex Wrench
- 4mm Hex Wrench

14.2 Inspection

1. Check that the brake mechanism has no excessive looseness, is not worn or damaged.

2. Check that the brake shoe is positioned correctly to provide maximum surface area contact on the tyre tread, and gives the positive brake hold.



Note:

- The distance between the brake shoe and tyre should be 30-35mm approximately

14.3 Disassembly



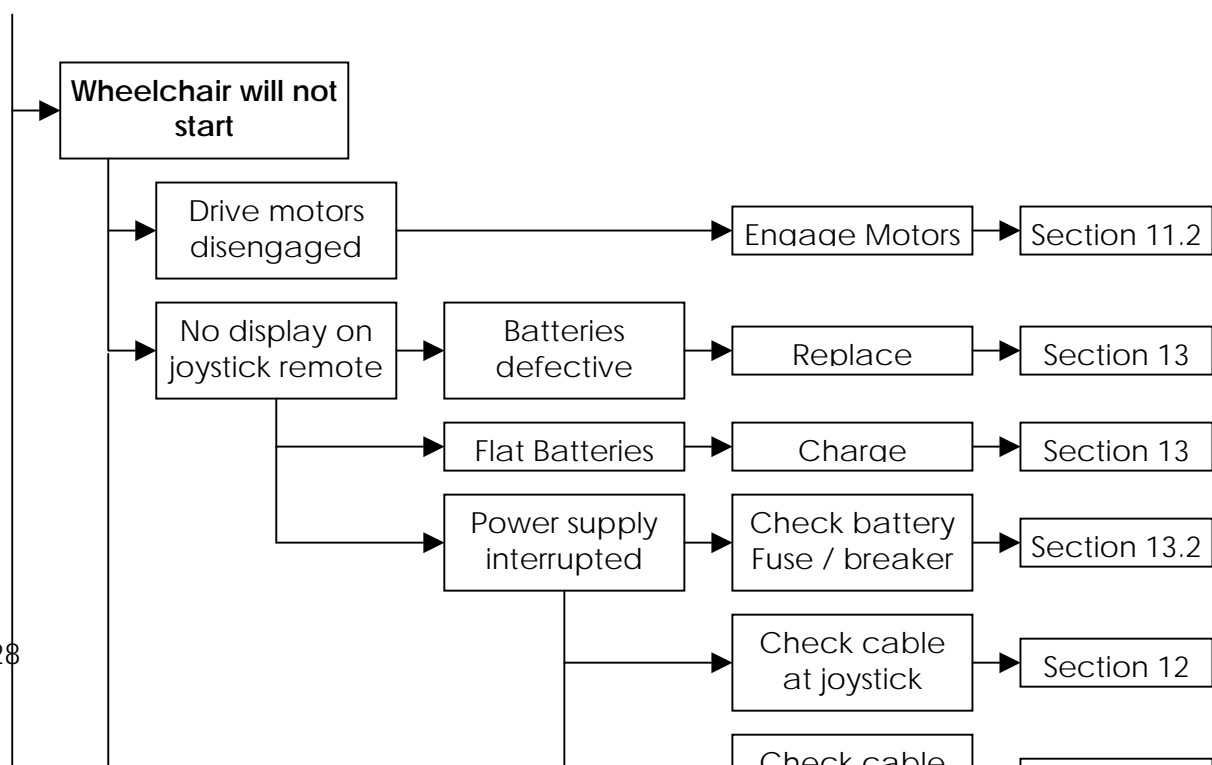
1. Loosen and remove the Anti Rotation screw (3) with a 4mm Hex Wrench.
2. Remove the Brake and Clamp (1) by loosening the clamp screws (2) with a 5mm Hex Wrench.
3. Remove the Brake from the clamp and side frame.
4. Use a 5mm Hex Wrench to remove the brake shoe (5) from the brake assembly.
5. Use a 4mm Hex Wrench to remove the brake assembly from the brake fixing rail (6).
6. To remove the handgrip (4), pull upwards firmly.

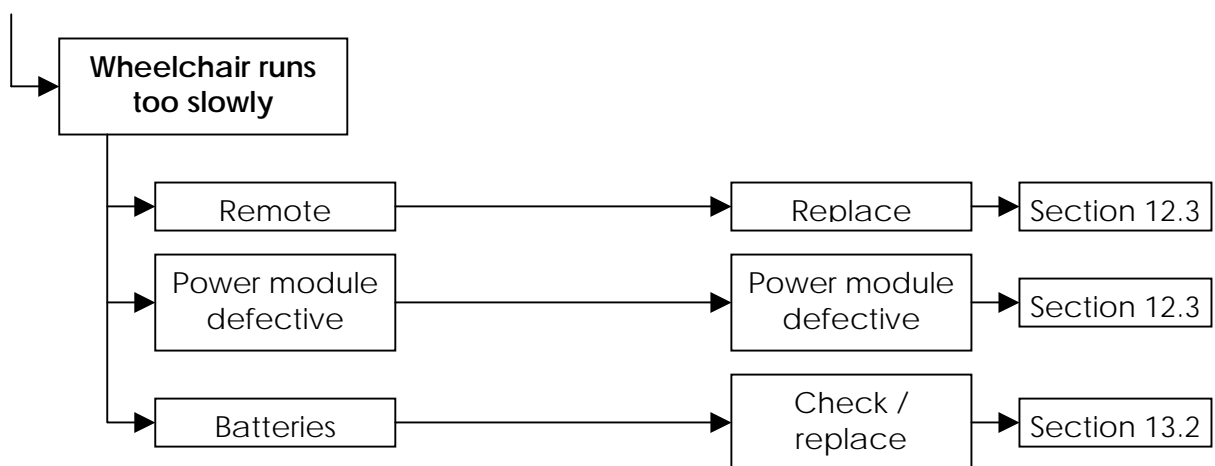
14.4 Assembly

1. To re-assemble reverse steps 1 to 6 above.
2. Ensure the brakes give a positive hold on the tyre. If the handgrip (4) has been removed, refit it with a suitable adhesive.

15 Fault Diagnostics

15.1 General Drive Faults





15.2 General Trouble Shooting

Symptom

ON/OFF button pressed to ON,

Check / Action

- Are the battery cables connected

Joystick lights do not light up
wheelchair does not move.

?

- Is the joystick cable connected ?
- Are the batteries disconnected ?
- Are the batteries completely flat ?
- Is the fuse / circuit breaker open ?

ON/OFF lights up, wheelchair does
not move or behaves erratically.

- Are one or both motors disengaged (freewheel mode) ?
- Is the Shark remote in Lock Mode? (See user guide).

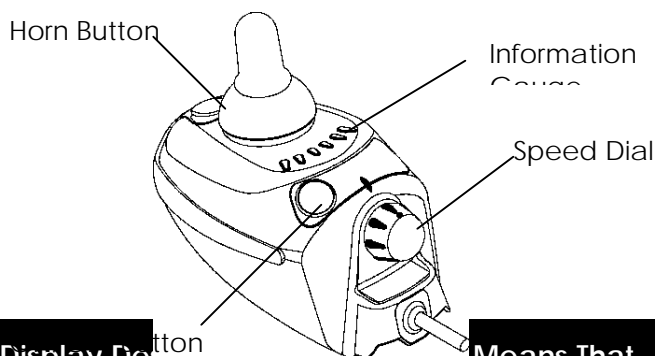
Battery Charge indicator shows
low battery. Wheelchair moves
slowly and does not respond well
to joystick movement.

- Are the batteries discharged to the critical level ?

Batteries will not accept charge.

- Possible charger fault ?
- Batteries are no longer serviceable ?

15.3 Shark Remote Information Gauge



The following table gives the
basic status of the Shark
remote.

Refer to the Information
Gauge for the relevant flash

Display Description	This Means That	Notes
All LED's off	Power is off	
All LED's on steady	Power is ON	Less LED's imply a reduced battery charge/
Left red LED flashing	Battery charge is low	Charge batteries as soon as possible.
Right to Left LED chase	Shark is being brought out of lock mode	To unlock shark, press the horn button twice within 10 seconds.
Left to right LED chase alternating with steady display	Shark is in programming, inhibit or charge mode	The steady LED's indicate the current state of battery charge.
Right green LED is	Speed Limit Mode	

flashing		
All LED's flashing slowly	Out of neutral at power up condition detected	Release the joystick back to neutral
All LED's flashing quickly	FAULT mode	See table below.

15.4 Shark Diagnostics Display

The Flash code from the Shark information gauge is shown below. The number of flashes are indicated with all LED's on for the relevant number of flashes followed by a pause, then Flash again.

Flash Code	Description	Notes
1	User Fault	Possible stall timeout or user error Release the joystick and try again
2	Battery fault	Check the batteries and cabling Try charging the batteries Batteries may require replacing
3	Left Motor Fault (M2)	Check the left motor connections and cabling.
4	Right Motor Fault (M1)	Check the right motor connections and cabling.
5	Left Park Brake Fault	Check the left park brake connections and cabling.
6	Right Park Brake Fault	Check the right park brake connections and cabling
7	Shark Control Unit Fault	Check the Shark communications bus wiring. Replace the control unit
8	Shark Power Module Fault	Check Shark connections and wiring Replace the power module
9	Shark Communications Fault	Check Shark connections and wiring Replace the Shark control unit
10	Unknown Fault	Check all connections and wiring Consult a service agent
11	Incompatible Control Unit	Wrong type of control unit connected. Ensure the branded power module matches that of the

		control unit.
--	--	---------------

For further details and in depth information refer to the Shark Installation Guide **GBK80047**

15.5 Hand Held Programmer (HPP) Diagnostics

Fault Code	Description	Sub Code	Notes
1	User Fault	00	Possible stall timeout or user error Release the joystick and try again
2	Battery fault	00	Batteries are too low to drive with or voltage is too high or low
3	Left Motor Fault (M2) ✓ Note : <i>00 & 01 change motor</i> <i>02 - 08 change power module</i>	00	Left motor short circuit
		01	Left motor open circuit
		02	Left motor connection fault (short to B-)
		03	Motor terminal connected to B+
		04	Left motor voltage consistency fault (probably fault with power module electronics).
		05	Left motor bridge fault (probably fault with power module electronics).
		06	Too many hardware current limit events
		07	Current measurement offset out of range.
		08	Hardware current limit fault
4	Right Motor Fault (M1) ✓ Note : <i>00 & 01 change motor</i> <i>02 - 08 change power module</i>	00	Right motor short circuit
		01	Right motor open circuit
		02	Right motor connection fault (short to B-)
		03	Motor terminal connected to B+
		04	Right motor voltage consistency fault (probably fault with power module electronics).
		05	Right motor bridge fault (probably fault with power module electronics).
		06	Too many hardware current limit

			events
		07	Current measurement offset out of range.
		08	Hardware current limit fault
5	Left Park Brake Fault	00	Left park brake-drive time test failed
		01	Left park brake output enabled when chair idle
		02	Left park brake output did not enable when entering drive
		03	Left park brake fault during power up test
		04	Left park brake feedback low during drive (park brake short circuit)
6	Right Park Brake Fault	00	Right park brake-drive time test failed
		01	Right park brake output enabled when chair idle
		02	Right park brake output did not enable when entering drive
		03	Right park brake fault during power up test
		04	Right park brake feedback low during drive (park brake short circuit)
7	Shark Control Unit Fault	00	Local remote fault (electronics, power button fault etc).
		01	Joystick fault at remote
		02	Speed pot fault at remote.
8	Power Module Fault	00	Power Module Fault
		01	RAM fault
		02	ROM fault
		03	CPU fault
		04	EEPROM fault
		05	Watchdog fault
		06	Stack fault
		07	Software fault
		08	Power up testing fault
		09	Relay fault or Pre-charge fault
		0A	Bridge fault or Disable all fault

		0B	Electronics fault
		0C	Calibration settings fault
9	Shark Communications Fault	00	Loss of communications between remote and power module
		01	Limp mode due to unreliable communications
10	Unknown Fault	00	Catch all fault output
11	Incompatible Control Unit	00	Wrong type of control unit connected.

For further details and in depth information refer to the Shark Installation Guide
GBK80047

16 Servicing Requirements

INVACARE recommends that routine servicing be carried out at six monthly intervals. The routine service
 Consists of the following:

16.1 Motors ✓

- Inspect plugs for physical damage.
- Inspect insulation for cracks and splits.
- Check and clean brake. Resistance = Approx. 50 - 80 Ohms.
- Inspect and clean brushes and commutator.
- Check action and operation of clutch mechanism.

16.2 Controller and Joystick Remote ✓

- Check for physical damage to outer casings.
- Inspect joystick shroud and gaiter for cracks and splits.
- Check all switch operations, and LED's.
- Check joystick lead and plug ends for signs of cracks, wear or physical damage.
- Check diagnostics to assure no faults present on systems. (Check information gauge, if flashing refer to section 15 diagnostics).

16.3 Frame and Chassis ✓

- Inspect all fixtures and fittings for tightness and integrity.
- Check front and rear wheel/axle bolts are tight.
- Ensure that all upholstery screws are present and tight. Check surface of screw head for sharp edges. Clean seat and back

upholstery.

16.4 Batteries



- Check batteries for any signs of physical damage.
- Check terminals for cracks or blackness.



Note:



- Should batteries become suspect, use battery discharge tester by Astra-Tech (Model DC39) to test capacity and runtime.
-

16.5 Battery Charger



- Check for physical damage of casing.
- Check all LED's are operational.
- For testing the battery charger, see section 13 Batteries and Charger.



INVACARE®INTERNATIONAL:

Belgium & Luxemburg: Autobaan 14 · B-8210 Loppem

Danmark: Sdr. Ringvej 39 · DK-2605 Brøndby

Deutschland, Österreich, Switzerland & East Europe:

Dehmer Straße 66 · D-32549 Bad Oeynhausen

España: c/ Areny · s/n Polígon Industrial de Celrà · E-17460 Celrà (Girona)

France: Les Roches · F-37230 Fondettes

Italia: Via dei Pini 62 · I-36016 Thiene (VI)

Nederland: Celsiusstraat 46 · NL-6716 BZ Ede

Norge: Grensesvingen 9 · N-0603 Oslo

Portugal: Rua Senhora de Campanhã 105 · P-4369-001 Porto

Sverige & Suomi: Fagerstagatan 9 · P.O. Box 66 · S-163 91 Spånga

United Kingdom & Eire: South Road · Bridgend Industrial Estate · Bridgend CF31 3PY · UK



MIRAGE-V-01-UK 0104

1441763