

BenchMark[®] Series

Single Point Bench Scales

Installation and Service Manual



RICE LAKE[®]
WEIGHING SYSTEMS
To be the best by every measure[®]

Contents

- 1.0 Introduction..... 1**
 - 1.1 Safety..... 1
 - 1.2 10" x 10" and 12" x 12" SL Models 2
 - 1.3 12", 18" and 24" Models 3
 - 1.4 12" x 18" Stainless Steel..... 3
 - 1.5 Specifications..... 4
 - 1.5.1 10" x 10" and 12" x 12" SL Models..... 4
 - 1.5.2 12" x 18" Stainless Steel Model..... 4
 - 1.5.3 12", 18" and 24" Models..... 4
- 2.0 Installation..... 5**
 - 2.1 Leveling Scale 5
 - 2.2 Connecting the Load Cell Cable..... 5
 - 2.3 Grounding the Scale Base 5
- 3.0 Calibration 6**
- 4.0 Troubleshooting Guide..... 7**
- 5.0 Load Cell Replacement..... 8**
 - 5.1 10"x10" and 12"x12" SL Models 8
 - 5.2 12", 18", and 24" Models 9
 - 5.3 Load Cell Replacement Table..... 10
 - 5.4 Installing Protective Clamshells..... 11
- 6.0 Replacement Parts 12**
 - 6.1 10" x 10" and 12" x 12" SL and SL/HE Series 12
 - 6.2 12" x 12" and 12" x 18" Models, Mild Steel 14
 - 6.3 12" x 18" Model, Stainless Steel..... 16
 - 6.4 18" x 18", 18" x 24" and 24" x 24" Models, Mild and Stainless Steel 18
- BenchMark Series Limited Warranty 20**
- For More Information..... 21**



Technical training seminars are available through Rice Lake Weighing Systems. Course descriptions and dates can be viewed at www.ricelake.com/training or obtained by calling 715-234-9171 and asking for the training department.



Rice Lake continually offers web-based video training on a growing selection of product-related topics at no cost. Visit www.ricelake.com/webinars.

1.0 Introduction

Congratulations on choosing a scale from the BenchMark™ series, the highest-quality single-point benchtop scale available. The following types of NTEP-approved BenchMark scales are available:



Authorized distributors and their employees can view or download this manual from the Rice Lake Weighing Systems distributor site at: www.ricelake.com

- The light-capacity SL series featuring stainless steel construction in 10"x10" and 12"x12" platforms with capacities from 5 lb to 100 lb.
- A mid-range model with a 12"x18" platform and a cover and frame that are constructed of stainless steel. This model is available in capacities from 50 lb to 100 lb.
- The medium-capacity series is constructed with stainless steel covers, and mild steel—or optional stainless steel—frame construction. This series is available in sizes from 12" x 12" up to 24" x 24" in capacities from 30 lb to 1,000 lb. This manual covers each scale series.

One exciting feature of the BenchMark series is its ability to be converted into a checkweigher. By adding the neck and head from a CW-80 CheckWeigher to your BenchMark scale, the features of a checkweigher are available to you. Contact your Rice Lake Weighing Systems distributor for more information.

1.1 Safety

Safety Symbol Definitions:



Indicates a potentially hazardous situation that, if not avoided could result in death or serious injury, and includes hazards that are exposed when guards are removed.



Indicates information about procedures that, if not observed, could result in damage to equipment or corruption to and loss of data.

General Safety



Do not operate or work on this equipment unless you have read and understand the instructions and warnings in this Manual. Failure to follow the instructions or heed the warnings could result in injury or death. Contact any Rice Lake Weighing Systems dealer for replacement manuals. Proper care is your responsibility.



Failure to heed may result in serious injury or death.

DO NOT allow minors (children) or inexperienced persons to operate this unit.

DO NOT operate without all shields and guards in place.

DO NOT jump on the scale.

DO NOT use for purposes other than weight taking.

DO NOT place fingers into slots or possible pinch points.

DO NOT use any load bearing component that is worn beyond 5% of the original dimension.

DO NOT use this product if any of the components are cracked.

DO NOT exceed the rated load limit of the unit.

DO NOT make alterations or modifications to the unit.

DO NOT remove or obscure warning labels.

Before opening the unit, ensure the power cord is disconnected from the outlet.

Keep hands, feet and loose clothing away from moving parts.

1.2 10" x 10" and 12" x 12" SL Models

All seven models of the 10" x 10" and 12"x12" SL series have stainless steel covers and frame systems. All models use a single point load cell. The 10, 20, 30, 50, and 100 lb models come standard with a potted single point load cell that offers extra protection against water infiltration but is not designed for washdown use. The 30, 50, and 100 lb models can also be supplied with an RL1140 stainless steel load cell. Extra load cell protection is also available in optional stainless steel "clamshells" which enclose the load cell. See Section 5.0 for information about clamshell installation. All load cells come with 10 feet of cable.

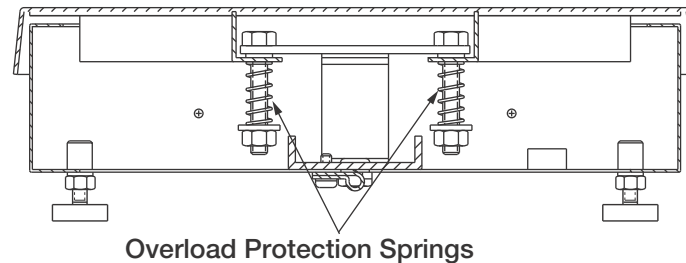


Figure 1-1. Overload Springs

The SL series scales use a sensitive 4-point, spring-plate suspension to minimize shock and overload damage susceptible of light-capacity scales. The system uses a bolt and an overload protection spring at each of four loading points beneath the top cover (see Figure 1-1). Each spring is set for a specific tension so that it will compress to prevent overload damage. If a potentially damaging load is placed on a corner of the scale, the spring at that corner compresses. When the spring compresses, the load is taken off the load cell. This eliminates the possibility of overloading the load cell. Likewise, if a load more than 150% of total capacity is placed anywhere on the deck, the springs will compress and remove the load from the load cell.

In addition to the overload protection spring, the SL models incorporate a load cell overload protection screw beneath the load cell to help prevent overload damage.

To protect the load cell from being accidentally forced upward and damaged by improperly lifting the scale by the spider, a lift up protection screw is incorporated into the design (see Figure 1-2).

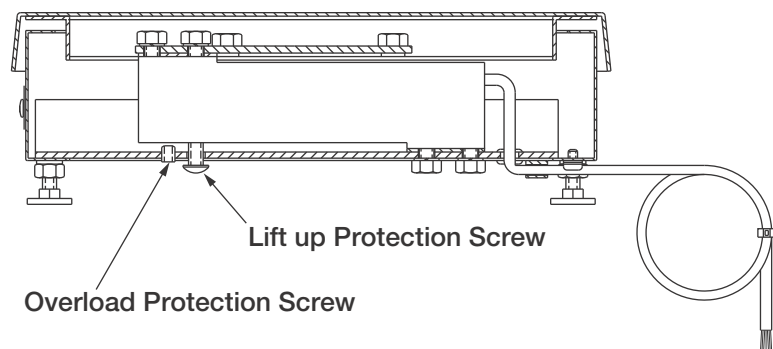


Figure 1-2. Lift up Protection Screw

1.3 12", 18" and 24" Models

Larger models in the series use mild steel frames and stainless steel deck covers for light washdown with a damp sponge. All models are available with mild steel or optional stainless steel underbody frame construction. The standard load cell is a single point load cell. Options include a stainless steel RL1140 load cell for 12" x 12" and 12" x 18" models and protective stainless steel clamshells for all models using a single point load cell. All load cells come with 10 feet of cabling.

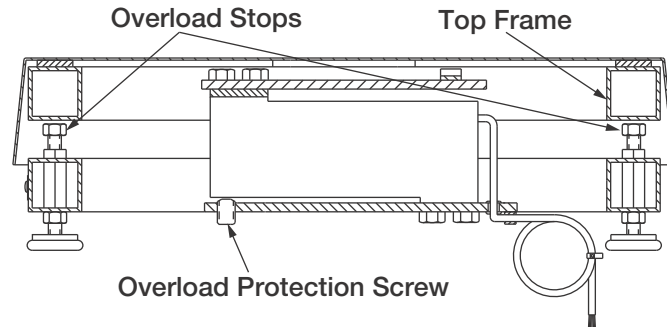


Figure 1-3. 12" x 12" With Overloads

These medium-capacity bench scales provide overload protection for the load cell by positive stops located beneath each corner of the top frame (see Figure 1-3). These stops are set at the factory for 100% of scale capacity. Additional overload protection is provided by an overload screw beneath the load cell to help prevent shock damage.

1.4 12" x 18" Stainless Steel

The 12" x 18" model has a stainless steel cover and underbody frame to meet USDA requirements and make it ideal for washdown use. The 12" x 18: comes standard with a single point load cell; a stainless steel load cell is optional for both the 50 lb and 100 lb models. Extra load cell protection is available with the optional stainless steel "clamshell" that encloses the load cell. See Section 5.0 for information about clamshell installation. All load cells come with 10 feet of cabling.

These medium capacity bench scales provide overload protection with positive stops located beneath each corner of the top frame. These stops are set at the factory for 100% of scale capacity. Additional overload protection is provided by an overload screw beneath the load cell to help prevent shock damage.

1.5 Specifications

1.5.1 10" x 10" and 12" x 12" SL Models

Load Cell: Potted single point
(5 lb is not potted)
Potted single point, stainless steel load cell
cell optional on 30, 50, and 100 lb models

Rated Output: 0.91 mV/V
Maximum Overload: 200%
Overload Protection: Spring loaded spider
Cable Length: 10 ft. (3 m) – 6 wire shielded
Output Impedance (ohms): 350Ω
Compensated
Temperature Range: -10°C/14°F to +50°C/122°F
Safe Temperature Range: -30°C/-22°F to +70°C/158°F
Dimensions/Capacities:

Size	Capacity	Height
10" x 10" / 254mm x 254mm	5 lb / 2.3 kg	3.15" / 80 mm
	10 lb / 4.5 kg	3.15" / 80 mm
	20 lb / 9.1 kg	3.15" / 80 mm
	30 lb / 13.6 kg	3.15" / 80 mm
12" x 12" / 305mm x 305mm	30 lb / 15 kg	3.25" / 92 mm
	50 lb / 25 kg	3.25" / 92 mm
	100 lb / 50 kg	3.25" / 92 mm

Table 1-1. 10" x 10" and 12" x 12" SL Model Sizes

1.5.2 12" x 18" Stainless Steel Model

Load Cell: Potted single point
Potted single point, stainless steel load cell
optional on 50 lb and 100 lb models

Rated Output: 0.91 mV/V
Maximum Overload: 200%
Overload Protection: 5 point, independently adjusted
Cable Length: 10 ft. (3 m) – 6 wire shielded
Output Impedance (ohms): 350Ω
Compensated
Temperature Range: -10°C/14°F to +50°C/122°F
Safe Temperature Range: -30°C/-22°F to +70°C/158°F
Dimensions/Capacities:

Size	Capacity	Height
12" x 18" / 305mm x 457mm	50 lb / 25 kg	4.00" / 102mm
	100 lb / 50 kg	4.00" / 102mm

Table 1-2. 12" x 18" Stainless Steel Model Sizes

1.5.3 12", 18" and 24" Models

Load Cell: 12"x12" and 12"x18":
Potted single-point
18"x18", 18"x24" and 24"x24":
Overload Protection: 5 point, independently adjusted
Cable Length: 10 ft. (3 m) – 6 wire shielded
Rated Output: 0.91 mV/V
Output Impedance: 350Ω
Maximum Overload: 200%
Compensated
Temperature Range: -10°C/14°F to +50°C/122°F
Safe Temperature Range: -30°C/-22°F to +70°C/158°F
Dimensions/Capacities:

Size	Capacity	Height
12" x 12" / 305mm x 305mm	30 lb / 13.6 kg	3.62" / 92mm
	50 lb / 25 kg	
	100 lb / 50 kg	
12" x 18" / 305mm x 457mm	50 lb / 25 kg	3.62" / 92mm
	100 lb / 50 kg	
18" x 18" / 457mm x 457mm	50 lb / 25 kg	5.25" / 133mm
	100 lb / 50 kg	
	150 lb / 75 kg	
	200 lb / 100 kg	
	250 lb / 125 kg	
	300 lb / 150 kg	
	500 lb / 250 kg	
	1000 lb / 500 kg	
18" x 24" / 457mm x 610mm	50 lb / 25 kg	5.25" / 133mm
	100 lb / 50 kg	
	150 lb / 75 kg	
	200 lb / 100 kg	
	250 lb / 125 kg	
	300 lb / 150 kg	
	500 lb / 250 kg	
	1000 lb / 500 kg	
24" x 24" / 610mm x 610mm	100 lb / 50 kg	5.25" / 133mm
	150 lb / 75 kg	
	200 lb / 100 kg	
	250 lb / 125 kg	
	300 lb / 150 kg	
	500 lb / 250 kg	
	1000 lb / 500 kg	
	kg	

Table 1-3. 12", 18, and 24" Model Sizes

2.0 Installation

2.1 Leveling Scale

Remove the scale from the shipping container and place it in the desired location. Lift off the deck cover and locate the bubble level. Adjust the four corner feet until the scale is level and all feet contact the support surface so the scale does not rock. Lock the jam nuts on the feet when the final level is correct.

2.2 Connecting the Load Cell Cable

All models come with 10 feet of color-coded load cell cable.



Important Do not cut this cable. The load cell is temperature-compensated for an exact cable length of 10 feet.

See your indicator manual to determine the proper load cell cable input connectors. Use the following color codes to wire the load cell cable.

For 6-wire operation:

6-Wire Color Code	Function
Red	- Signal
White	+ Signal
Green	+ Excitation
Black	- Excitation
Blue	+ Sense
Brown	- Sense
Yellow or Bare	Shield

Table 2-1. Load Cell Wiring - 6 Wire

For 4-wire operation:

4-Wire Color Code	Function
Red	- Signal
White	+ Signal
Green and Blue*	+ Excitation
Black and Brown*	- Excitation
Yellow or Bare	Shield

*** Connect Sense and Excitation wires together if using 4-wire system without sense leads.**

Table 2-2. Load Cell Wiring - 4 Wire

2.3 Grounding the Scale Base

Bench scales can build up a static electricity charge during weighing operations. If powerful enough, this charge can travel through the load cell cable to the indicator. To prevent this, all bench scales should be adequately grounded so that static charges and transient electrical surges can drain directly to ground. Recommended practice is to connect the scale base to an AC ground circuit using at least #12 wire. All BenchMark scales have either a grounding screw or a hole for such a grounding screw located on the bottom of the lower frame for this purpose.

3.0 Calibration

It is recommended that the scale be “exercised” by loading it to near capacity 2 or 3 times before calibration to be certain that everything is seated. To calibrate your BenchMark:

1. With no load on scale, place the indicator in its calibration mode and perform a zero calibration.
2. Place test weights on platform equal to 70%–100% of scale’s capacity. If several weights are used, they distribute them evenly around the platform.
3. Perform a span calibration.
4. Remove the test weights and check the zero reading. If necessary, repeat the calibration process.

See the indicator manual for the specific indicator calibration procedure.

4.0 Troubleshooting Guide

Use the following troubleshooting tips for the Benchmark scale if necessary.

Symptom	Probable Cause	Remedy
No display	Power disconnected	Connect power
	Cable cut or disconnected	Repair cable
	Signal leads incorrectly wired at indicator	Connect according to the manual
Display starts at zero	Incorrect load cell cable connections	Connect according to the manual
	Faulty indicator	Service indicator
Erratic Weight display	Vibration near the scale	Remove the source of the vibration, or adjust digital averaging of indicator to minimize erratic display
	Scale not level	Level the scale
	Water damage to the load cell or cable	Replace the load cell
	Faulty indicator	Service the indicator
	Loose load cell screws	Tighten to correct torque
	Faulty load cell	Test and replace if necessary
Consistently low weight	Indicator not properly adjusted to zero	Zero indicator correctly
	Scale deck cover binding	Obtain adequate clearance
	Overload stops set too high	Reset the stops correctly
	Indicator not calibrated for scale	Calibrate the scale
	Faulty load cell	Test and replace if necessary

Table 4-1. Benchmark Troubleshooting Table

5.0 Load Cell Replacement

5.1 10"x10" and 12"x12" SL Models

1. Unplug AC power from indicator and disconnect load cell cable from indicator.
2. Lift off scale top cover.
3. Locate two upper load cell screws. Use 7/16" wrench to unscrew and remove those two load cell screws.

! Important Do not remove four spring-loaded screws that attach load plate to spider assembly.

4. Lift off load plate/spider assembly as a unit.
5. Remove spacer between load plate and load cell and set it aside.

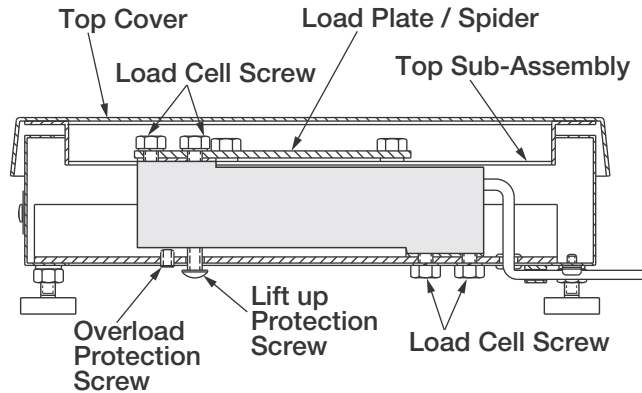


Figure 5-1. Load Cell Mount Diagram

6. Turn scale over and back off overload protection screw one complete turn. Completely unscrew and remove lift up protection screw.
7. Use 7/16" wrench to unscrew and remove two lower load cell screws. The load cell and cable can now be removed from scale. Do not lose shim beneath load cell.
8. Thread cable of replacement load cell through rubber grommet. Position load cell on shim and screw in two lower load cell screws. Torque to 80 in-lb.
9. Replace lift up protection screw by screwing it in until it lightly bottoms, then back it off 1/4 turn.
10. Turn scale right side up. Position spacer on load cell, then place load plate/spider assembly into position. Screw in two upper load cell screws. Torque to 80 in-lb.
11. Using an accurate caliper, check compressed spring length on four overload springs (Figure 5-2). If necessary, adjust spring length to specifications shown in Table 5-1. Replace top cover and re-level scale if necessary.
12. Connect load cell cable to indicator.
13. Recalibrate scale as described in Section 3.0.
14. Adjust overload protection screw on bottom of scale by loading scale to 125% capacity. Place this weight on top cover, centered on platform. Use a hex wrench to screw in overload protection screw until it touches load cell, then back off 1/6 turn. Recheck calibration.

Scale Model	Spring Length "H"
10 x 10 - 5 Lb	1.06
10 x 10 - 10 Lb	.94
10 x 10 - 20 Lb	.97
10 x 10 - 30 Lb	1.43
12 x 12 - 30 Lb	1.43
12 x 12 - 50 Lb	1.12
12 x 12 - 100 Lb	1.16

Table 5-1. Overload Spring Length

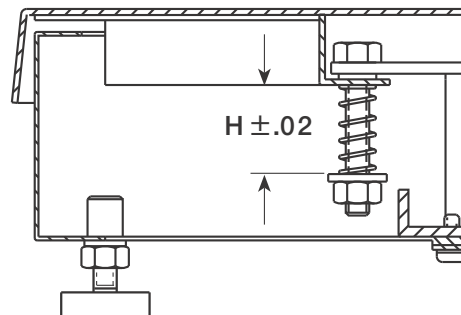


Figure 5-2. Spring Height

5.2 12", 18", and 24" Models

1. Unplug AC power from indicator and disconnect load cell cable from indicator.
2. Lift off scale top cover. Locate upper load cell screws. Depending on model of scale, there will be either two or four upper load cell screws. Unscrew and remove those load cell screws. Lift off top spider. Remove spacer plate and set it aside.

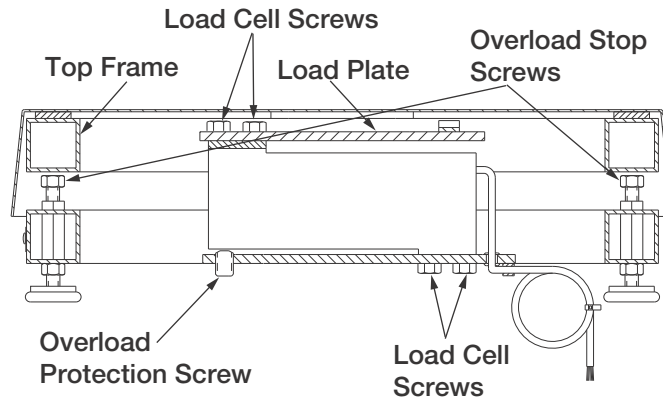


Figure 5-2. 12" x 12" Load Cell Mount

3. Loosen four overload stop screws and turn each screw in one turn to provide ample clearance for the new load cell. Turn scale over and back off overload protection screw one complete turn to provide clearance.
4. Unscrew and remove lower load cell screws. Depending on model of scale, there will be either two or four lower load cell screws.
5. Remove bottom shim beneath load cell and set it aside.
6. Remove load cell and cable from scale.
7. Thread cable of replacement load cell through rubber grommet.
8. Position bottom shim directly beneath load cell and screw in lower load cell screws. Torque to 80 in-lbs for 12" x 12" and 12" x 18" scales, to 120 in-lb for 18" x 18", 18" x 24", and 24" x 24" scales.
9. Turn scale right side up. Position spacer plate on load cell, then place top spider into position.
10. Screw in four upper load cell screws. Torque to 80 in-lbs for 12" x 12" and 12" x 18" scales, to 120 in-lb for 18" x 18", 18" x 24", and 24" x 24" scales.
11. Connect load cell cable to indicator.
12. Recalibrate scale as described in Section 3.0 of this manual.
13. Adjust overload protection screw on bottom of scale by loading scale to 125% capacity. Place this weight on top cover, centered on platform. Use a hex wrench to screw in overload protection screw until it touches the load cell, then back off 1/6 turn. Recheck calibration.
14. To reset corner overload stop screws, load top spider over one corner with approximately 30% of scale capacity. Adjust screw under that corner to just touch top frame. Place a drop of a non-permanent, high-strength locking compound such as LOCTITE[®] on the thread. Back screw off slightly so it is not touching.

5.3 Load Cell Replacement Table

The following table illustrates the load cell replacement numbers used with the Benchmark scales.

SL Series			
Deck Size	Capacity	Load Cell	P/N
10 x 10	2 lb	Load Cell, RL1042-3 kg	40956
10 x 10	5 lb	Load Cell, RL1042-5 kg	40957
10 x 10	10 lb	Load Cell, RL-SP4-10 kg	91726
10 x 10	20 lb	Load Cell, RL-SP4-20 kg	91728
10 x 10	30 lb	Load Cell, RL-SP4-30 kg	91729
12 x 12	30 lb	Load Cell, RL-SP4-30 kg	91729
12 x 12	50 lb	Load Cell, RL-SP4-50 kg	91730
12 x 12	100 lb	Load Cell, RL-SP4-100 kg	91732
SL/HE Series			
10 x 10	5 or 10 lb	Load Cell, RLPC6-10 kg	87027
10 x 10 / 12 x 12	20 or 30 lb	Load Cell, RLPC6-20 kg	87028
12 x 12	50 lb	Load Cell, RLPC6-50 kg	87029
12 x 12	100 lb	Load Cell, RLPC6-100 kg	87030
Mild Steel/Stainless Steel			
12 x 12	30 lb	Load Cell, RL-SP4-30 kg (Mild Steel Only)	91729
12 x 12, 12 x 18	50 lb	Load Cell, RL-SP4-50 kg	91730
12 x 12, 12 x 18	100 lb	Load Cell, RL-SP4-100 kg	91732
18 x 18, 18 x 24	50 lb	Load Cell, RLPMW16 50 kg	91684
18 x 18, 18 x 24, 24 x 24	100 lb	Load Cell, RLPMW16 100 kg	91687
18 x 18, 18 x 24, 24 x 24	150 lb	Load Cell, RLPMW16 150 kg	91688
18 x 18, 18 x 24, 24 x 24	200 lb	Load Cell, RLPMW16 200 kg	91689
18 x 18, 18 x 24, 24 x 24	250 lb	Load Cell, RLPMW16 250 kg	91690
18 x 18, 18 x 24, 24 x 24	300 lb	Load Cell, RLPMW16 300 kg	91691
18 x 18, 18 x 24, 24 x 24	500 lb	Load Cell, RLPMW16 500 kg	91692
18 x 18, 18 x 24, 24 x 24	1000 lb	Load Cell, RLPMW12 1000 kg	91683
Mild Steel/Stainless Steel, Potted			
18 x 18, 18 x 24	50 lb	Load Cell, RL1250-N5 50 kg	32849
18 x 18, 18 x 24, 24 x 24	100 lb	Load Cell, RL1250-N5 100 kg	32855
18 x 18, 18 x 24, 24 x 24	150 lb	Load Cell, RL1250-N5 150 kg	32854
18 x 18, 18 x 24, 24 x 24	200 lb	Load Cell, RL1250-N5 200 kg	32853
18 x 18, 18 x 24, 24 x 24	250 lb	Load Cell, RL1250-N5 250 kg	32852
18 x 18, 18 x 24, 24 x 24	300 lb	Load Cell, RL1250-N5 300 kg	32851
18 x 18, 18 x 24, 24 x 24	500 lb	Load Cell, RL1250-N5 500 kg	32850
HE Series			
12 x 18, 18 x 18, 18 x 24	50 lb	Load Cell, RLPC-6 50 kg	87029
12 x 18, 18 x 18, 18 x 24, 24 x 24	100 or 150 lb	Load Cell, RLPC-6 100 kg	87030
18 x 18, 18 x 24, 24 x 24	200 lb	Load Cell, RLPC-6 200 kg	87031
18 x 18, 18 x 24, 24 x 24	250 or 300 lb	Load Cell, RLPCBC-60 250 kg	87024
18 x 18, 18 x 24, 24 x 24	500 lb	Load Cell, RLPCBC-60 500 kg	87025
18 x 18, 18 x 24, 24 x 24	1000 lb	Load Cell, RLPCBC-60 1000 kg	87026

Table 5-2. Load Cell Replacement Parts

5.4 Installing Protective Clamshells

Stainless steel enclosures called clamshells are available to provide extra protection for the load cell of every BenchMark scale. All clamshells are pre-drilled for load cell screws, overload screws, and cables. Any existing load cell shims or spacers are installed inside the clamshells.

1. The lower clamshell fits inside the upper clamshell and is installed first. Position the clamshell so that no part of it touches the load cell, then tighten the lower load cell screws to the specifications given Section 5.1 or Section 5.2.

Important *When installing the upper clam shell, position it so there is clearance on all sides to prevent any binding problems with the lower clam shell.*

2. Tighten the upper load cell screws to the required torque.
3. When installation is complete, reset all overload protection screws as described in Section 5.1 or Section 5.2.
4. Calibrate the scale according to the procedure described in Section 3.0.

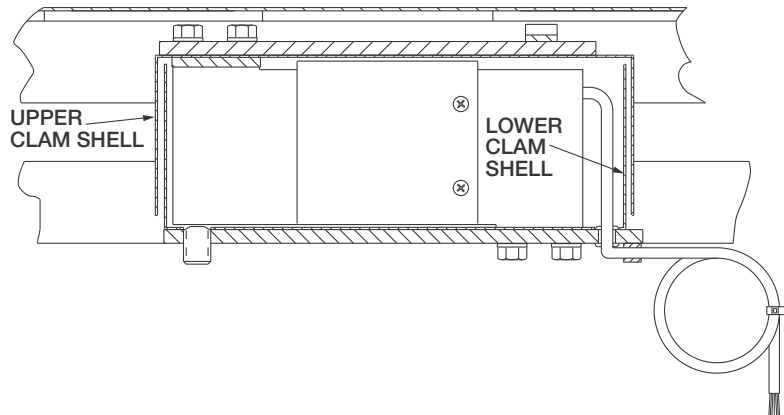


Figure 5-3. Clamshell Enclosure

6.0 Replacement Parts

6.1 10" x 10" and 12" x 12" SL and SL/HE Series

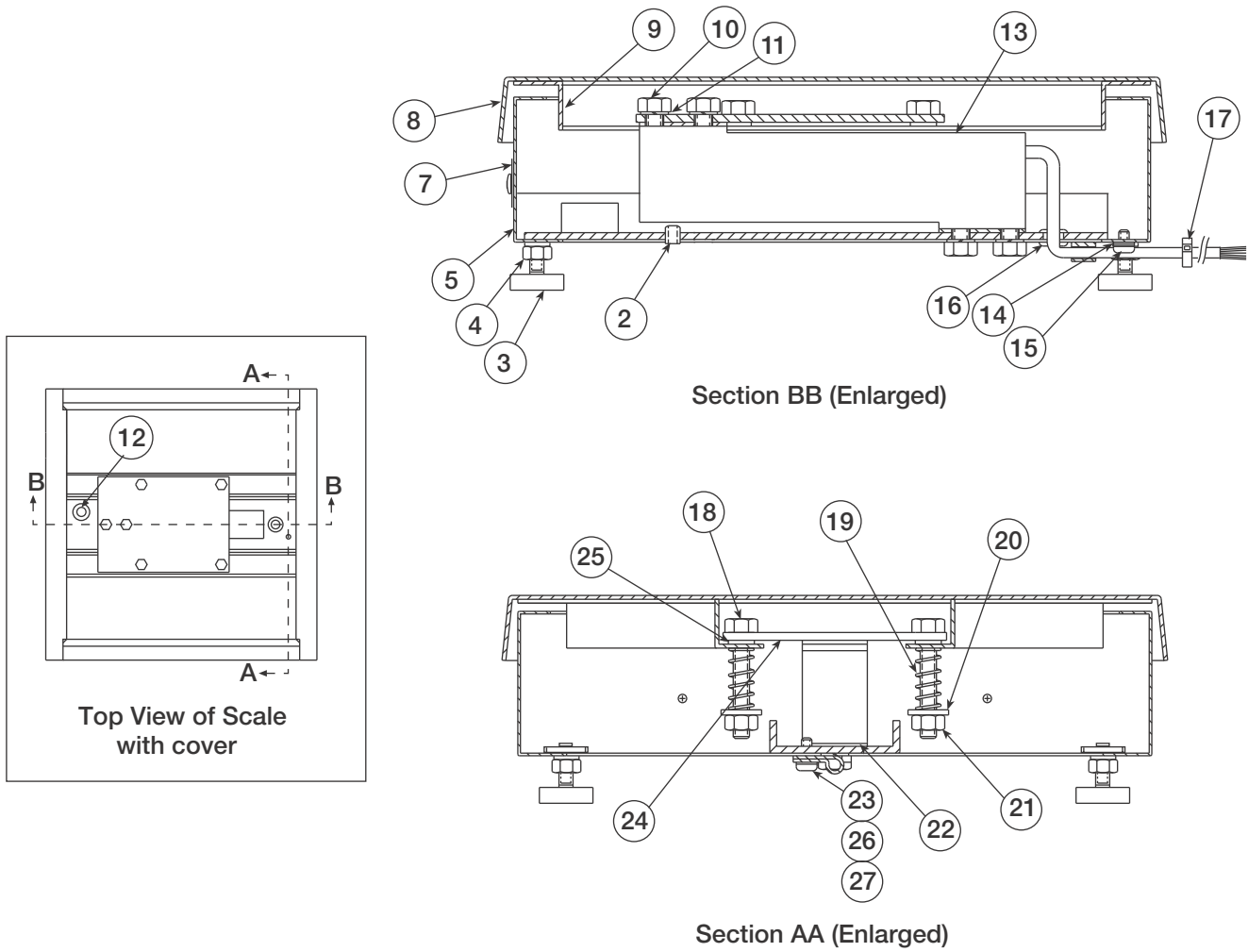


Figure 6-1. 10 x 10 and 12 x 12 SL and SL/HE Parts Illustration

Item	Part No.	Description	Qty.
2	14920	Screw, Overload Protection, 8 -32UNC x 1/4, SS	1
3	35128	Foot, 1/4 - 20 NC x 1 3/16 SS	4
4	14645	Jam Nut, Foot 1/4 - 20, SS	4
5	19086	Bottom Subassembly, (2 lb – 30 lb, 10 in x 10 in)	1
	35066	Bottom Subassembly, (30 lb – 100 lb, 12 in x 12 in)	1
7	52342	Label, Bench Scale	1
8	19091	Cover, Top, 10 x 10 SS	1
	35069	Cover, Top, 12 x 12 SS	1
9	19088	Spider, Top, 10 x 10	1
	35068	Spider, Top, 12 x 12	1
10	15148	Lockwasher 1/4 SS	4
11	21948	Screw, Load Cell, 1/4 - 20 x 5/8 SS	4
12	15410	Bubble Level, Plastic, 15 mm	1
13		Load cell (see Table 5-2)	1
14	15132	Lockwasher, #8, SS	1
15	14857	Pan Head Screw, 8 - 32 x 1/4 SS	1
16	15408	Rubber Grommet, 3/16 ID x 1/2 OD	1
17	16141	Cable Tie, 8"	1
18	14984	Cap screw (2 lb-20 lb models)	4
	21947	Cap screw (30 lb model)	4
	35199	Cap screw (50 lb-100 lb models)	4
19	15412	Spring, overload (2 lb model)	4
	21945	Spring, overload (5 lb model)	4
	15416	Spring, overload (10 lb model)	4
	21946	Spring, overload (20 lb model)	4
	21944	Spring, overload (30 lb model)	4
	35086	Spring, overload (50 lb model)	4
	35200	Spring, overload (100 lb model)	4
20	15149	Flat Washer, 1/4 type A, SS	4
21	14634	Nut, Nylon Insert, 1/4-20, SS	4
22	19089	Load Cell Shim, SS	1
23	15409	Plastic Wire Clamp	1
24	19090	Load Plate, (2 lb – 30 lb, 10 in x 10 in)	1
	35067	Load Plate, (30 lb – 100 lb, 12 in x 12 in)	1
25	15150	Washer, Rubber	4
26	15138	Washer, #8, SS	1
27	14862	Screw, 8 - 32 x 3/8 SS	1

Table 6-1. 10 x 10 and 12 x 12 SL and SL/HE Parts List

6.2 12" x 12" and 12" x 18" Models, Mild Steel

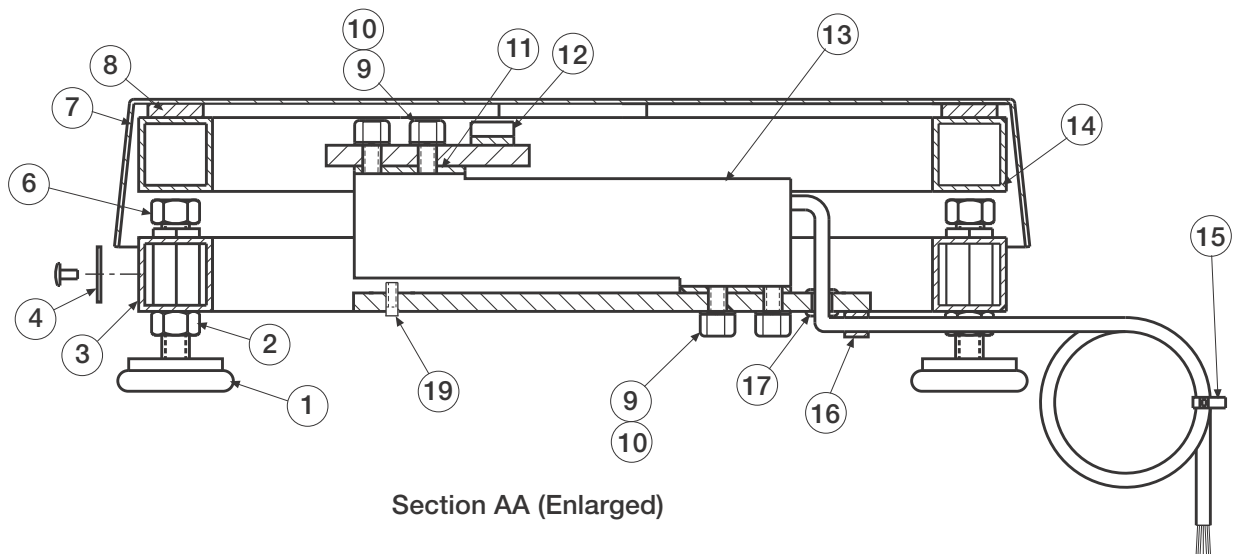
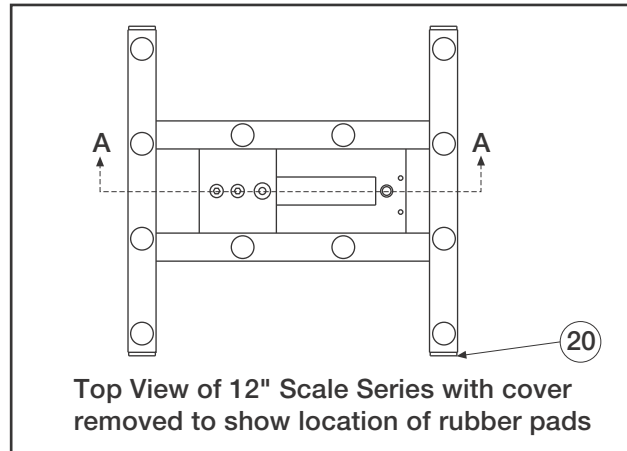


Figure 6-2. 12" x 12" and 12" x 18" Mild Steel Parts Illustration

Item	Part No.	Description	Qty.
1	35128	Foot, 1/4-20 NC x 1 3/16	4
2	14645	Jam Nut, Foot	4
3	32993	Frame, Bottom, 12" X 12"	1
	32992	Frame, Bottom, 12" X 18"	1
4	52342	Label, Bench Scale	1
6	14739	Bolt, Overload, 12" X 12"	4
7	19092	Cover, Top, 12" X 12"	1
	19093	Cover, Top, 12" X 18"	
8	26408	Bumper, Round Self Adhesive	12
9	15147	Washer, Locking, 1/4	4
10	14962	Screw Cap, 12" X 18"	4
11	19089	Spacer, Load Cell	1
12	15410	Spirit Level Bubble, Plastic	1
13		Load Cell, (see Table 5-2)	1
14	19132	Frame, Top, 12" X 12"	1
	19134	Frame, Top, 12" X 18"	1
15	16141	Cable Tie	1
16	15409	Plastic Wire Clamp	1
17	15418	Rubber Grommet, 3/16 X 1/2 od	1
19	14918	Overload Protection Screw, 8-32 X 1/4	1
20	19139	Square Insert Guide	8

Table 6-2. 12" x 12" and 12" x 18" Mild Steel Parts List

6.3 12" x 18" Model, Stainless Steel

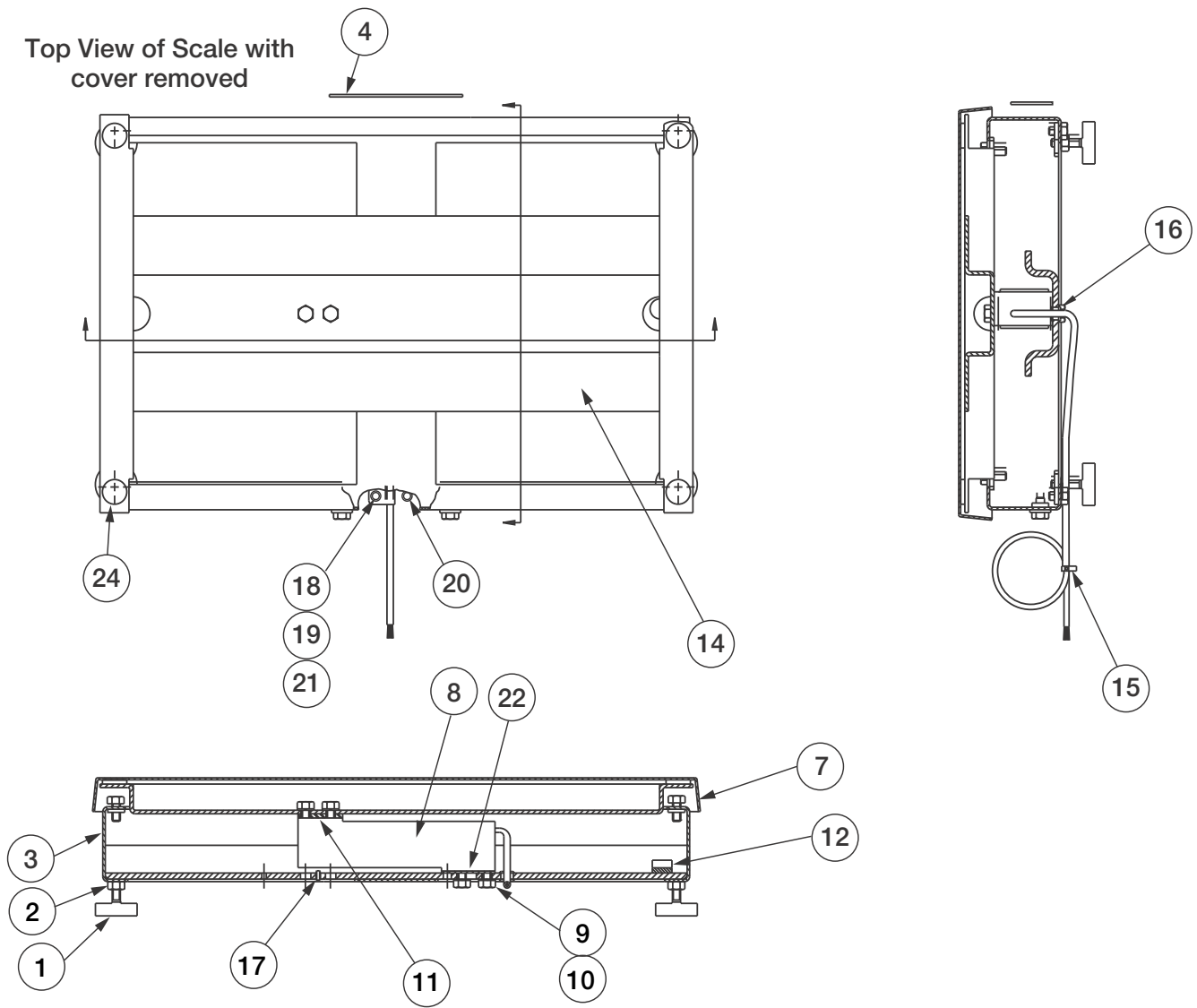


Figure 6-3. 12" x 18" Stainless Steel Parts Illustration

Item	Part No.	Description	Qty.
1	35128	Foot, Bench Scale, 1/4-20 NC	4
2	14645	Nut, Jam, 1/4-20 NC, Hex	4
3	32795	Bottom Sub-assembly	1
4	52342	Label, Bench Scale	1
7	32957	Top Cover, 12" X 18"	1
8		Load Cell, (See Table 5-2)	1
9	15148	Washer, Lock, 1/4 Regular	4
10	14963	Screw, Cap, 1/4-20 NC X 3/4	4
11	35082	Shim, Load Cell	1
12	15410	Level, Spirit Bubble	1
14	32797	Spider Top, 12" x 18"	1
15	16141	Cable Tie, 8" Nylon	1
16	15418	Grommet, Rubber	1
17	14920	Screw, Set, 8-32 NC x 1/4, Hex	1
18	15409	Clamp, Cable, No. 8 Hole	1
19	15138	Washer, Plain, Std No. 8	1
20	15132	Washer, Lock, No. 8, Type A	1
21	14862	Screw, Mach, 8-32 NC x 3/8	1
22	19089	Shim, Load Cell	1
24	26408	Bumper, Self Adhesive	4

Table 6-3. 12" x 18" Stainless Steel Parts List

6.4 18" x 18", 18" x 24" and 24" x 24" Models, Mild and Stainless Steel

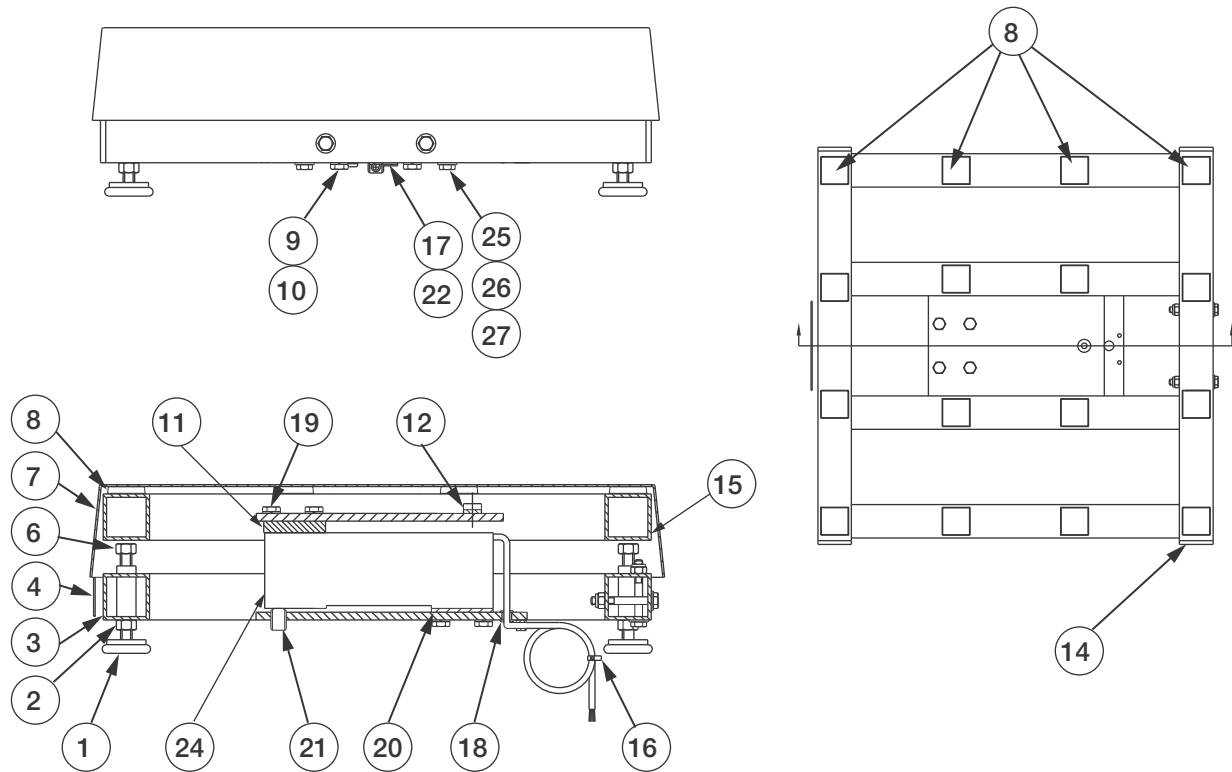


Figure 6-4. 18" x 18", 18" x 24" and 24" x 24" Models Parts Illustration

Item	Part No.	Description	Qty.
1	19141	Foot, 3/8-16 X .78	4
2	14649	Jam Nut, Foot Ms	4
	14653	Jam Nut, Foot Ss	4
3	49766	Frame Bottom, 18" X 18", MS (RL1260/PMW16 Load Cell)	1
	49768	Frame Bottom, 18" X 18", SS (RL1260/PMW16 Load Cell)	1
	49770	Frame Bottom, 18" X 24", MS (RL1260/PMW16 Load Cell)	1
	49772	Frame Bottom, 18" X 24", SS (RL1260/PMW16 Load Cell)	1
	49774	Frame Bottom, 24" X 24", MS (RL1260/PMW16 Load Cell)	1
	49776	Frame Bottom, 24" X 24", SS (RL1260/PMW16 Load Cell)	1
	19108	Frame Bottom, 18" X 18", MS (RL1250 Load Cell)	1
	19109	Frame Bottom, 18" X 18", SS (RL1250 Load Cell)	1
	19110	Frame Bottom, 18" X 24", MS (RL1250 Load Cell)	1
	19111	Frame Bottom, 18" X 24", SS (RL1250 Load Cell)	1
	19112	Frame Bottom, 24" X 24", MS (RL1250 Load Cell)	1
	19114	Frame Bottom, 24" X 24", SS (RL1250 Load Cell)	1
4	52342	Label Roll, 4" X 1.25"	1
6	14742	Bolt, 3/8-16 NC X 1, Hex Head	4
7	19094	Cover, Top, 18" X 18"	1
	19095	Cover, Top, 18" X 24"	1
	19096	Cover, Top, 24" X 24"	1

Table 6-4. 18" x 18", 18" x 24" and 24" x 24" Models Parts List

Item	Part No.	Description	Qty.
8	26407	Bumper, Self Adhesive	20
9	15153	Washer, Lock, 5/16 Regular, MS	8
	15154	Washer, Lock, 5/16 Regular, SS	8
10	26668	Screw, Cap, 5/16-18 NC x 3/4, Hex, MS	4
	26669	Screw, Cap, 5/16-18 NC x 3/4, Hex, SS	4
	26667	Screw, Cap, 5/16-18 NC x 1, hex, MS	4
	26670	Screw, Cap, 5/16-18 NC x 1, hex, SS	4
11	49785	Plate, Washer, MS (RL1260/RLPMW16 load cell)	1
	49786	Plate, Washer, SS (RL1260/RLPMW16 load cell)	1
	19102	Plate, Washer, MS (RL1250 load cell)	1
	19103	Plate, Washer, SS (RL1250 load cell)	1
12	15410	Level, Spirit Bubble	1
14	19140	Insert, Glide, Square	8
15	49765	Frame, Top, 18" x 18", MS (RL1260/RLPMW16 Load Cell)	1
	49767	Frame, Top, 18" x 18", SS (RL1260/RLPMW16 Load Cell)	1
	19116	Frame, Top, 18" x 18", MS (RL1250 Load Cell)	1
	19117	Frame, Top, 18" x 18", SS (RL1250 Load Cell)	1
	19118	Frame, Top, 18" x 24", MS (RL1250 Load Cell)	1
	19119	Frame, Top, 18" x 24", SS (RL1250 Load Cell)	1
	49769	Frame, Top, 18" x 24", MS (RL1260/RLPMW16 Load Cell)	1
	49771	Frame, Top, 18" x 24", SS (RL1260/RLPMW16 Load Cell)	1
	49773	Frame, Top, 24" x 24", MS (RL1260/RLPMW16 Load Cell)	1
	49775	Frame, Top, 24" x 24", SS (RL1260/RLPMW16 Load Cell)	1
	19120	Frame, Top, 24" x 24", MS (RL1250 Load Cell)	1
	19121	Frame, Top, 24" x 24", SS (RL1250 Load Cell)	1
	16	16141	Cable, Tie, 8" Nylon
17	15409	Clamp, Cable, No. 8 Hole	1
18	15418	Grommet, Rubber	1
	49788	Screw, Cap, 5/16-18 NC X 1 1/4, Hex, MS (RL1260 Load Cell)	4
	49789	Screw, Cap, 5/16-18 NC X 1 1/4, Hex, SS (RL1260 Load Cell)	4
	26667	Screw, Cap, 5/16-18 NC X 1, Hex, MS (RL1250 Load Cell)	4
	26668	Screw, Cap, 5/16-18 NC X 3/4, Hex, MS (RL1250 Load Cell)	4
	26669	Screw, Cap, 5/16-18 NC X 3/4, Hex, SS (RL1250 Load Cell)	4
20	49787	Shim Plate (RL1260/RLPMW16 Load Cell)	1
	22264	Shim Plate (RL1250 Load Cell)	1
21	15045	Screw, Set, 1/2-20 NF X 1/2, Hex, MS	1
	15047	Screw, Set, 1/2-20 NF X 1/2, Hex, SS	1
22	14858	Screw, Mach, 8-32 NC X 5/16, MS	1
	14862	Screw, Mach, 8-32 NC X 3/8, SS	1
24	32849	Load Cell, (See Table 5-2)	1
25	35316	Screw, Cap, 1/4-20 NC X 2, Hex, MS	1
	35199	Screw, Cap, 1/4-20 NC X 2, Hex, SS	1
26	15145	Washer, Plain, 1/4 Type A, MS	1
	15149	Washer, Plain, 1/4 Type A, SS	1
27	14635	Nut, Lock, 1/4-20 NC, Hex, MS	1
	14634	Nut, Lock, 1/4-20 NC, Hex, SS	1

Table 6-4. 18" x 18", 18" x 24" and 24" x 24" Models Parts List

BenchMark Series Limited Warranty

Rice Lake Weighing Systems (RLWS) warrants that all RLWS equipment and systems properly installed by a Distributor or Original Equipment Manufacturer (OEM) will operate per written specifications as confirmed by the Distributor/OEM and accepted by RLWS. All systems and components are warranted against defects in materials and workmanship for two years.

RLWS warrants that the equipment sold hereunder will conform to the current written specifications authorized by RLWS. RLWS warrants the equipment against faulty workmanship and defective materials. If any equipment fails to conform to these warranties, RLWS will, at its option, repair or replace such goods returned within the warranty period subject to the following conditions:

- Upon discovery by Buyer of such nonconformity, RLWS will be given prompt written notice with a detailed explanation of the alleged deficiencies.
- Individual electronic components returned to RLWS for warranty purposes must be packaged to prevent electrostatic discharge (ESD) damage in shipment. Packaging requirements are listed in a publication, "Protecting Your Components From Static Damage in Shipment," available from RLWS Equipment Return Department.
- Examination of such equipment by RLWS confirms that the nonconformity actually exists, and was not caused by accident, misuse, neglect, alteration, improper installation, improper repair or improper testing; RLWS shall be the sole judge of all alleged nonconformities.
- Such equipment has not been modified, altered, or changed by any person other than RLWS or its duly authorized repair agents.
- RLWS will have a reasonable time to repair or replace the defective equipment. Buyer is responsible for shipping charges both ways.
- In no event will RLWS be responsible for travel time or on-location repairs, including assembly or disassembly of equipment, nor will RLWS be liable for the cost of any repairs made by others.

THESE WARRANTIES EXCLUDE ALL OTHER WARRANTIES, EXPRESSED OR IMPLIED, INCLUDING WITHOUT LIMITATION WARRANTIES OF MERCHANTABILITY OR FITNESS FOR A PARTICULAR PURPOSE. NEITHER RLWS NOR DISTRIBUTOR WILL, IN ANY EVENT, BE LIABLE FOR INCIDENTAL OR CONSEQUENTIAL DAMAGES.

RLWS AND BUYER AGREE THAT RLWS'S SOLE AND EXCLUSIVE LIABILITY HEREUNDER IS LIMITED TO REPAIR OR REPLACEMENT OF SUCH GOODS. IN ACCEPTING THIS WARRANTY, THE BUYER WAIVES ANY AND ALL OTHER CLAIMS TO WARRANTY.

SHOULD THE SELLER BE OTHER THAN RLWS, THE BUYER AGREES TO LOOK ONLY TO THE SELLER FOR WARRANTY CLAIMS.

No terms, conditions, understanding, or agreements purporting to modify the terms of this warranty shall have any legal effect unless made in writing and signed by a corporate officer of RLWS and the Buyer.

© Rice Lake Weighing Systems, Inc. Rice Lake, WI USA. All Rights Reserved.

RICE LAKE WEIGHING SYSTEMS • 230 WEST COLEMAN STREET • RICE LAKE, WISCONSIN 54868 • USA

For More Information

Web Site

- Frequently Asked Questions (FAQs) at
 - <http://www.ricelake.com/faqs.aspx>

Contact Information

Hours of Operation

Knowledgeable customer service representatives are available 6:30 a.m. - 6:30 p.m. Monday through Friday and 8 a.m. to 12 noon on Saturday. (CST)

Telephone

- Sales/Technical Support 800-472-6703
- Canadian and Mexican Customers 800-321-6703
- International 715-234-9171

Immediate/Emergency Service

For immediate assistance call toll-free 1-800-472-6703 (Canadian and Mexican customers please call 1-800-321-6703). If you are calling after standard business hours and have an urgent scale outage or emergency, press 1 to reach on-call personnel.

Fax

Fax Number 715-234-6967

E-mail

- US sales and product information at
 - prodinfo@ricelake.com
- International (non-US) sales and product information at
 - intlsales@ricelake.com

Mailing Address

Rice Lake Weighing Systems
230 West Coleman Street
Rice Lake, WI 54868 USA



230 W. Coleman St. • Rice Lake, WI 54868 • USA
U.S. 800-472-6703 • Canada/Mexico 800-321-6703
International 715-234-9171

www.ricelake.com
m.ricelake.com

© Rice Lake Weighing Systems

February 18, 2010 PN 22125 Rev B