



SERVICE BULLETIN

Classification: HA11-004	Reference: NTB11-048	Date: May 5, 2011
-----------------------------	-------------------------	----------------------

2004 – 2011 TITAN AND ARMADA DRIVER SIDE AIR MIX DOOR MOTOR REPLACEMENT

APPLIED VEHICLE: 2004 – 2011 Titan (A60)
2004 – 2011 Armada (TA60)

IF YOU CONFIRM

- The air mix door motor (driver) needs to be replaced for any reason,

ACTIONS

- Remove the Instrument Panel (IP) to gain access to the air mix door motor (driver).
- Replace the motor with the one listed in the Parts Information.
- Use the Procedure Tips in this bulletin as a job aid in combination with the Service Manual for replacement of the air mix door motor (driver).

NOTE: The step/tips in this bulletin are not intended to be complete details for replacement of the driver side air mix door motor. They are only helpful additions (tips) to be used in combination with the Service Manual.

PARTS INFORMATION:

DESCRIPTION	PART #	QUANTITY
Air Mix Door (Driver)	27743 – ZP00A	1

CLAIMS INFORMATION

Submit a Primary Part (PP) type line claim using the following claims coding.

DESCRIPTION	PFP	OP CODE	FRT
RPL Driver Side Air Mix Door Actuator	27743 – ZS00A	TC32AA	(1)

(1) Refer to the current Nissan Warranty Flat Rate Manual and use the Indicated FRT.

Nissan Bulletins are intended for use by qualified technicians, not 'do-it-yourselfers'. Qualified technicians are properly trained individuals who have the equipment, tools, safety instruction, and know-how to do a job properly and safely. NOTE: If you believe that a described condition may apply to a particular vehicle, DO NOT assume that it does. See your Nissan dealer to determine if this applies to your vehicle.

PROCEDURE TIPS (for driver side air mix door motor replacement)

- Use the Service Manual for the step-by-step replacement information.
- Review the Tips in this bulletin, and apply them at the appropriate place in your work flow.

IMPORTANT:

- Follow all cautions, warnings, and notes in the Service Manual when working on or near a Supplemental Restraint System (SRS), such as an air bag.
- Use covers as needed to protect interior surfaces.

Tip 1. Removal of the Heater and Cooling unit assembly is not needed. The air mix door motor can be accessed with the Instrument Panel (IP) removed.

- **Do not** drain the engine coolant or disconnect the heater hoses.
- **Do not** discharge the A/C system or disconnect any refrigerant lines.

Tip 2. Complete removal of the center console is not needed.

- **Do not** remove the shift selector assembly.
- Remove all mounting screws for the center console and move/slide the console back about 3 inches.



Figure 1

Tip 3. Removal of the steering column assembly is not needed.

- **Do not** remove the steering column mounting bolts.
- **Do not** remove the tilt motor and sensor.
- Remove steering wheel.
- Remove combination switch and spiral cable.



Figure 2

Tip 4. Removal of the speakers (center and both outer) is not needed.

- Refer to IP exploded view on page 6.
- The center speaker electrical connector can be disconnected once the display unit is removed.
- The left side outer speaker electrical connector can be disconnected by reaching through the instrument cluster opening after the cluster is removed.
- The right side outer speaker electrical connector can be disconnected by reaching through the glove box opening after the glove box is removed.

Tip 5. If equipped, the GPS sensor and harness must be removed / disconnected before removing the IP.

- GPS sensor is located at the front center of the IP under the defroster grill.
- Remove the two mounting bolts from the GPS sensor.

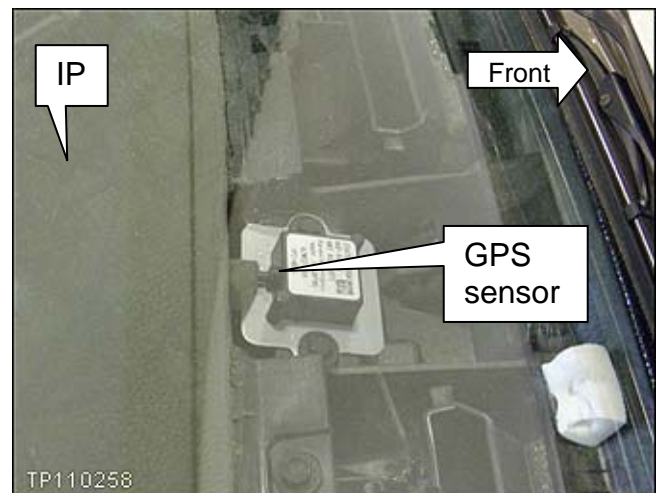


Figure 3

- With the display unit removed, unclip the GPS harness from the IP.

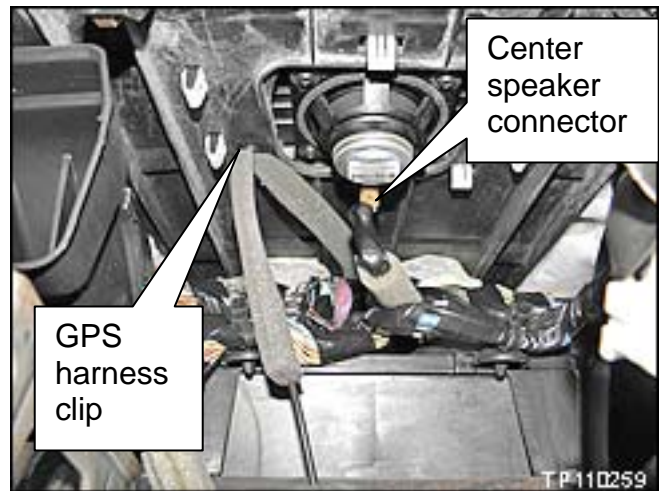


Figure 4

Tip 6. Mark the location of the 9 front IP mounting screws (see Figure 5). This will help with reassembly.

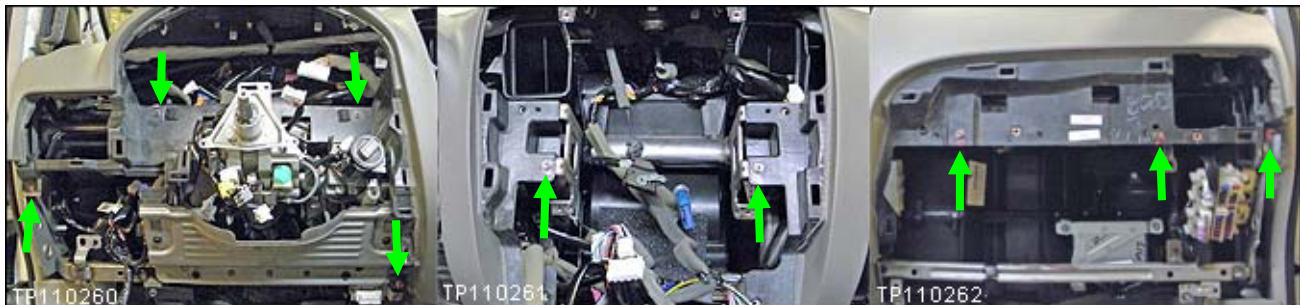


Figure 5

Tip 7. After removing the IP:

- **Do not** disconnect/remove the IP wiring harness.
- **Do not** unbolt/remove the steering member (dash support tube).

Tip 8. Remove passenger side (right side) demister duct and ventilator duct (see Figure 6).



Figure 6

- Removing ducts will allow access to the air mix door motor (driver). See Figure 7.

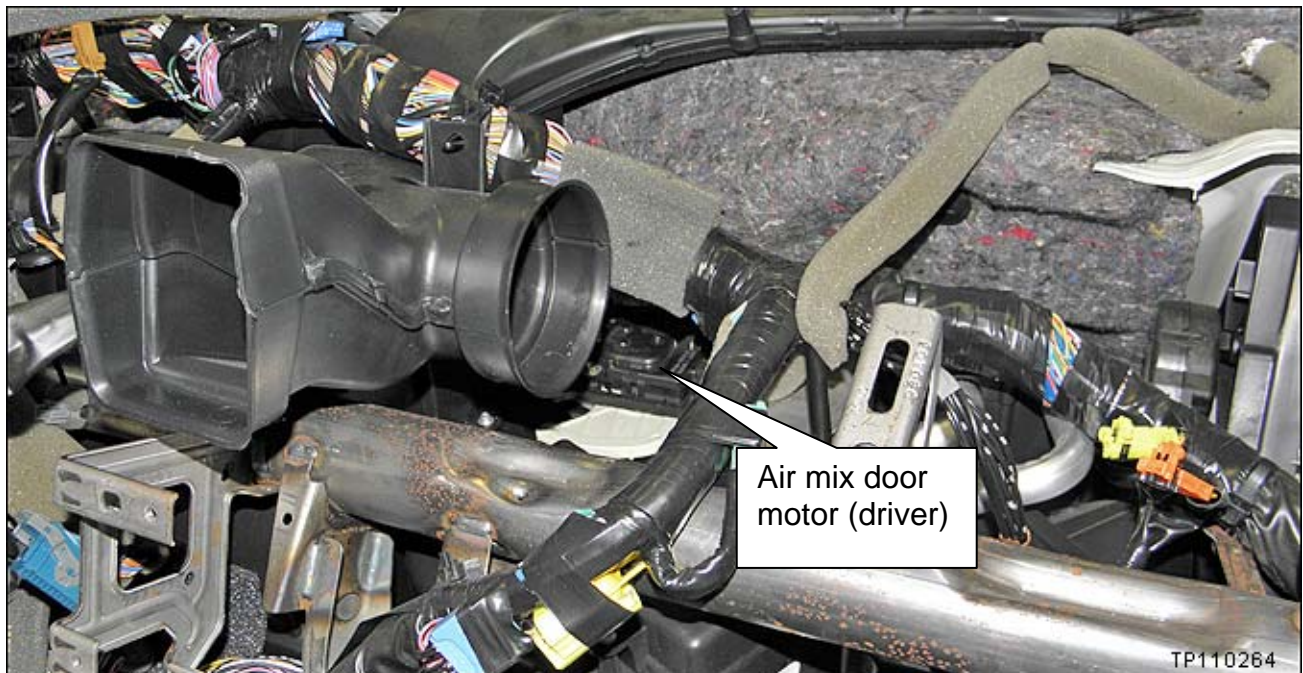


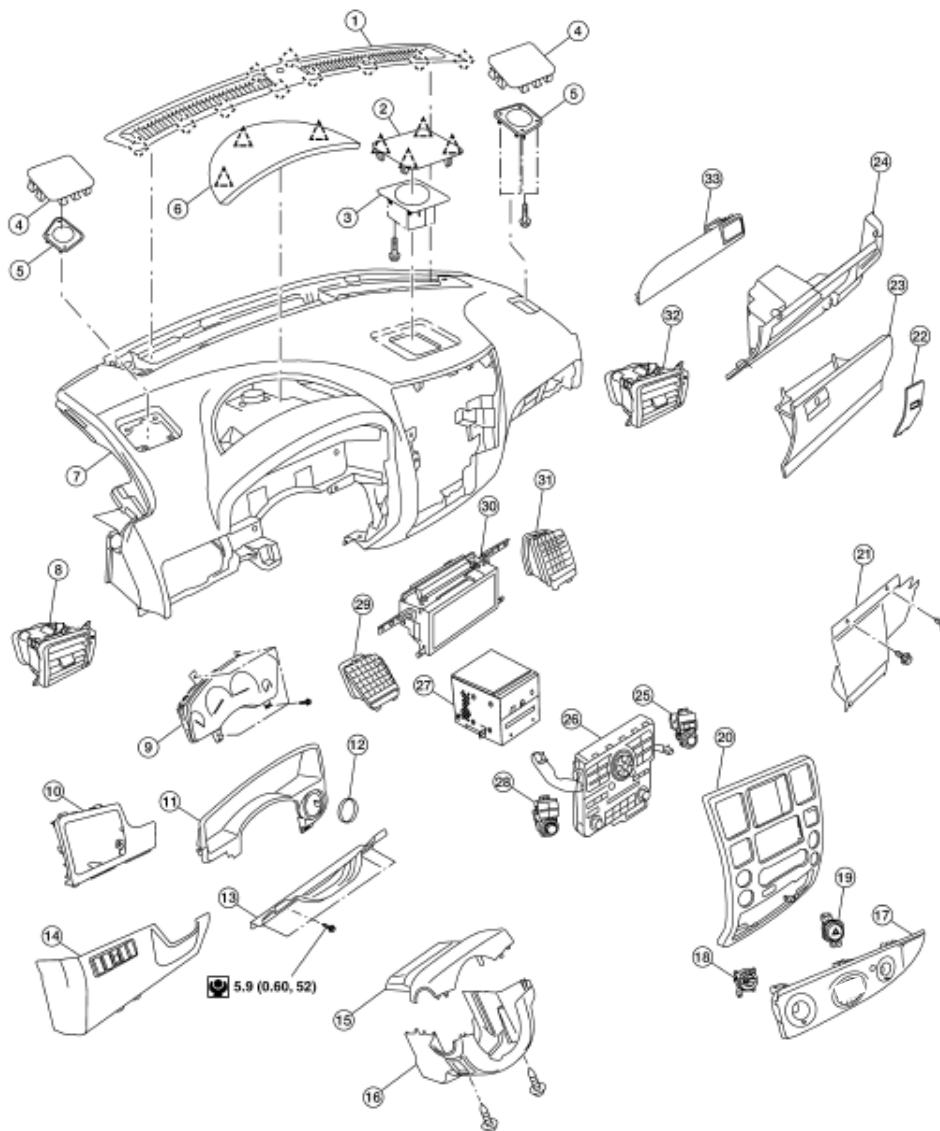
Figure 7

INSTRUMENT PANEL ASSEMBLY

Exploded View

WFOCD:0000000051471

SEC. 680



AWJ14023603

- | | | |
|--------------------------------------|-----------------------------------|---------------------------------|
| 1. Defroster grille | 2. Center speaker grille | 3. Speaker center |
| 4. Speaker grille outer | 5. Speaker outer | 6. Instrument panel upper cover |
| 7. Instrument panel and pad assembly | 8. Side ventilator assembly LH | 9. Combination meter |
| 10. Instrument upper panel LH | 11. Cluster lid A | 12. Key cylinder escutcheon |
| 13. Lower knee protector | 14. Instrument lower panel LH | 15. Steering column cover upper |
| 16. Steering column cover lower | 17. Cluster lid C lower | 18. 4WD switch (if equipped) |
| 19. Hazard switch | 20. Cluster lid C | 21. Instrument lower cover RH |
| 22. Fuse access cover | 23. Glove box | 24. Instrument lower panel RH |
| 25. Audio switch RH | 26. A/C and AV switch assembly | 27. Audio unit |
| 28. Audio switch LH | 29. Center ventilator assembly LH | 30. Display assembly |
| 31. Center ventilator assembly RH | 32. Side ventilator assembly RH | 33. Instrument upper panel RH |
- Metal clip
 Clip