



Internal Use Only

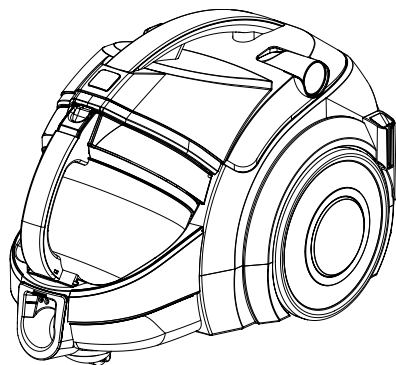
Website <http://biz.lgservice.com>

VACUUM CLEANER SERVICE MANUAL

MODEL : VK9820NHB
VK9820NHC

CAUTION

BEFORE SERVICING THE UNIT, READ THE
"SAFETY PRECAUTIONS" IN THIS MANUAL.



P/NO : MFL57157905

September, 2008
Printed in Korea

CONTENTS

SAFETY PRECAUTIONS.....	3
CAUTIONS	3
DESCRIPTION.....	4
SPECIFICATIONS	4
DISASSEMBLY	5~6
TROUBLE SHOOTING GUIDE.....	7~9
SCHEMATIC DIAGRAM.....	10
CIRCUIT DIAGRAM.....	11
EXPLODED VIEW	12~15
REPLACEMENT PARTS LIST.....	16~21

SAFETY PRECAUTIONS

BEFORE OPERATING THIS VACUUM CLEANER, READ THIS SERVICE MANUAL THOROUGHLY, AND OBSERVE EACH POINT CAREFULLY.

1. Motor filter(Air Cleaner)

- 1) This filter is reusable.
- 2) Never use the vacuum cleaner without filter. It may damage the motor.
- 3) When the light of body is on, wash the motor filter with water.
- 4) Even if the light is not on, wash the motor filter at least once 6 months.

NOTE : Reusing of the motor filter.

- Never wash the filter in a washing machine or in a dishwasher.
- Never use hot water for washing the filter.
- Reuse the filter after drying it completely in the shade for a day.
- Do not dry near fire or direct sunray.

2. Exhaust filter(HEPA filter)

- 1) This filter is reusable HEPA filter.
- 2) For clean air, filter must be assembled.
- 3) Dean the exhaust filter with water once a year.
- 4) When the light of body is on, clean the exhaust filter.

NOTE : Reusing of the exhaust filter.

- Do not wash filter with water.
- Do not brush the filter. This will cause permanently damage allowing dust to by-pass the filter.

3. Avoid suction such materials as :

- 1) Liquid or wet dust :
Clogs the ventilation holes, reduces the suction power significantly and harms the motor.
- 2) Inflammable liquids such as benzene, alcohol or solvents.
- 3) Burning objects such as cigarette butts.
- 4) Bulky objects such as vinyl, paper etc.
- 5) Sharp objects such as needles, pins, metal, glass particles etc.

4. Attachments

- Nozzle : for cleaning wooden floor, the room floor and carpet.
- Crevice Tool : for cleaning any crevice, inside corners or window frames. However, do not use the crevice tool more than 20 minutes because it may cause harm to the motor.
- Dusting brush : for cleaning clothes curtains.

5. Close supervision is necessary when this vacuum cleaner is used by or near children. Children's carelessness may cause damage to the cleaner or injure persons.

6. Air exhausted from the vacuum cleaner is normally warm. But if extraordinarily hot air is exhausted, check if the telescopic tube, hose or clean filter is clogged or not.

7. Electric shock could occur if used outdoors or on wet surfaces.

CAUTIONS

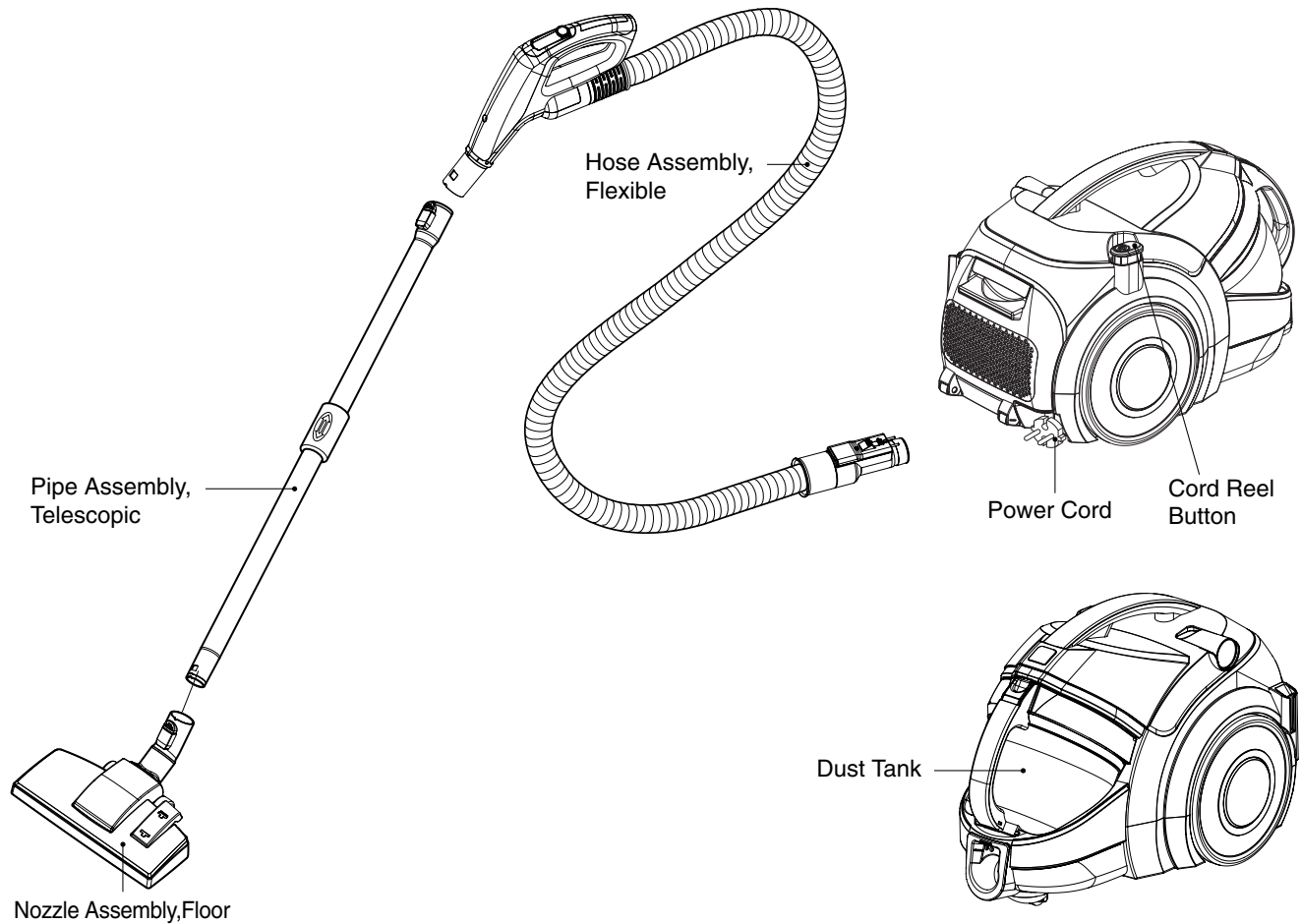
BEFORE ATTEMPTING TO SERVICE OR ADJUST ANY PART OF THE VACUUM CLEANER, DISCONNECT THE ELECTRICAL POWER SUPPLY CORD FROM THE WALL OUTLET.

1. Motor exchange

- 1) Separate the Body Cover and Body Base by unfastening the screws.
- 2) After disconnecting the lead wires, replace the old motor with a new one.

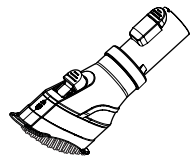
2. In case of exchanging other parts. refer to the exploded view.

DESCRIPTION



CANISTER

ATTACHMENTS



BRUSH ASSEMBLY, DUST



NOZZLE, CREVICE

SPECIFICATIONS

- **MODEL** : REFER TO THE COVER PAGE
- **POWER SOURCE** : ON RATING PLATE
- **POWER CONSUMPTION** : ON RATING PLATE
- **POWER CONTROL** :
 - **MAIN** : SLIDE KNOB CONTROL (F/HOSE)
- **CORD LENGTH** : 9m
- **HOSE LENGTH** : 1.8 m
- **NET WEIGHT** : 6.4 kg
- **PACKING WEIGHT** : 10.5 kg
- **NET DIMENSION** : 492 × 290 × 330 (D × W × H)

- **PACKING DIMENSION** : 650 × 330 × 367 (D × W × H)
- **ATTACHMENTS**
 - HOSE ASSEMBLY, FLEXIBLE.....1EA
 - PIPE ASSEMBLY, TELESCOPIC1EA
 - NOZZLE ASSEMBLY, FLOOR.....1EA
 - BRUSH ASSEMBLY, DUST1EA
 - NOZZLE, CREVICE.....1EA

• This specifications are subject to change according to the buyer's request.

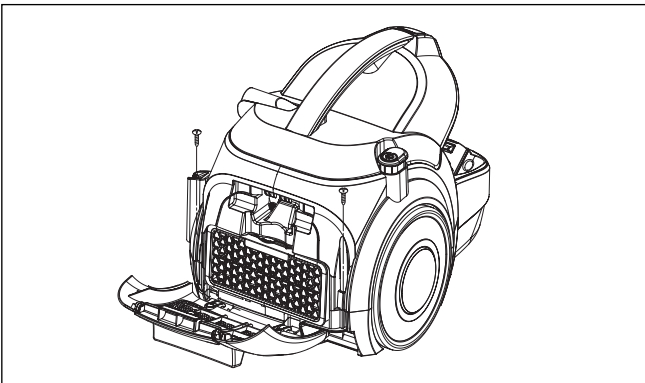
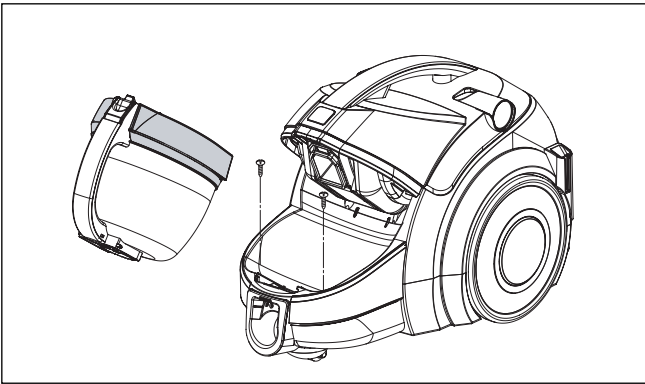
DISASSEMBLY

NOTE : Before attempting to service or adjust any part of the vacuum cleaner, disconnect the electrical power supply cord from the wall outlet.

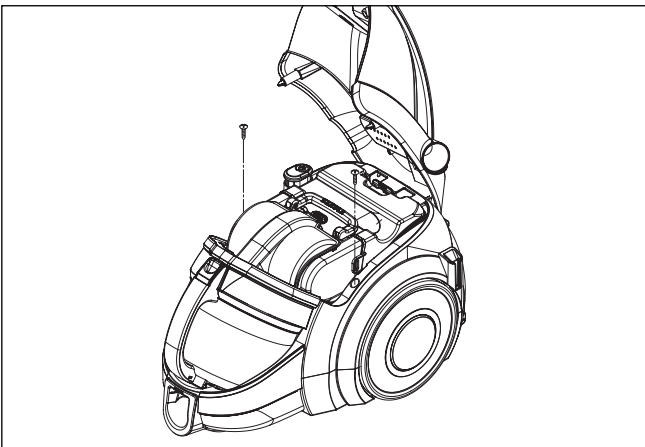
- Almost all of the parts of this vacuum cleaner can be disassembled with a screw driver and each connecting component easily fits each other. Disassemble one by one referring to the exploded view.
- If possible, don't disassemble except for the necessary parts. It is not necessary to disassemble the parts that are not detailed in the exploded view.

1. Body Cover Assembly Replacement

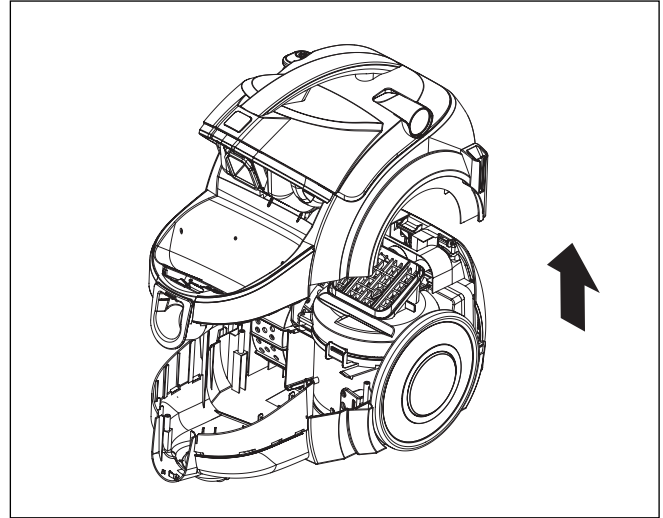
- 1) Remove the dust tank from the set.
Remove the five screws fastening the sub cover.



- 2) Remove the one screws fastening the body base.

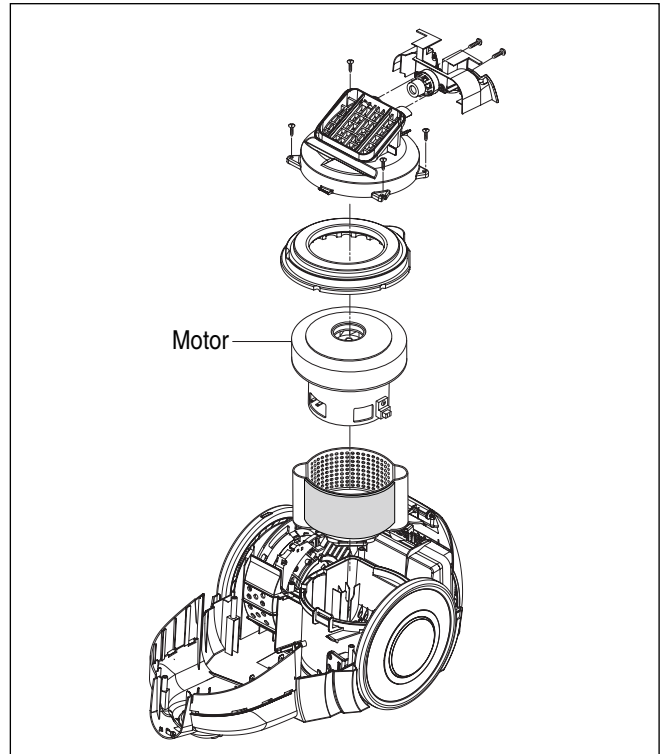


- 3) Disassemble the body cover, raising the body cover.
Pull out the two lead wire housing.



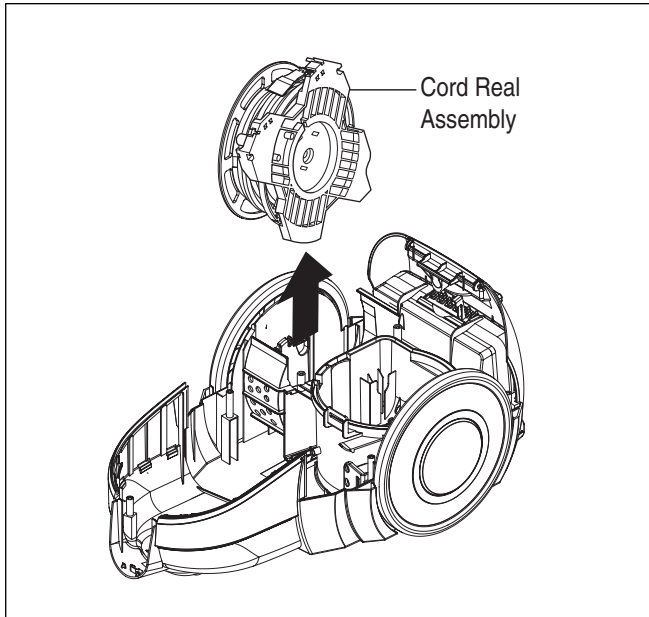
2. Motor Assembly Replacement

- 1) Remove the four screws fastening the motor cover.
- 2) Unlock the two hooks.
- 3) Pull out the motor and disconnect the lead wires from it.



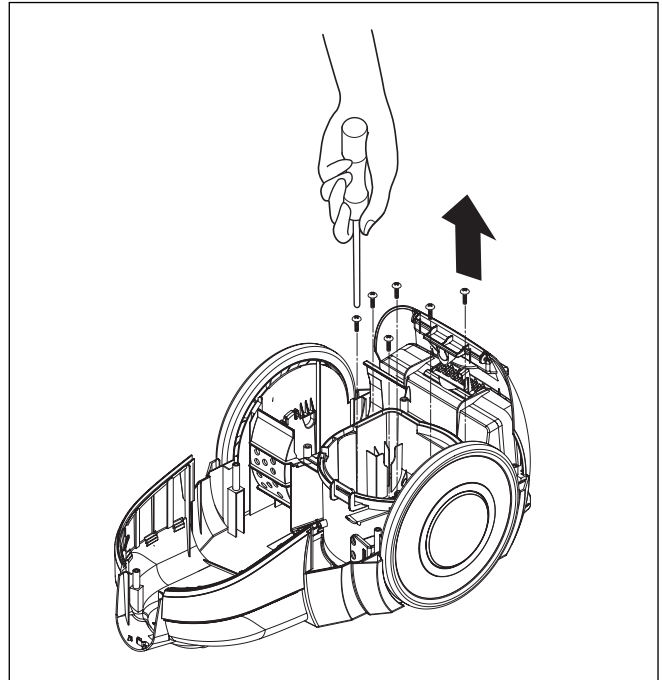
3. Cord Reel Assembly Replacement

- 1) Lift the cord reel assembly from body base.



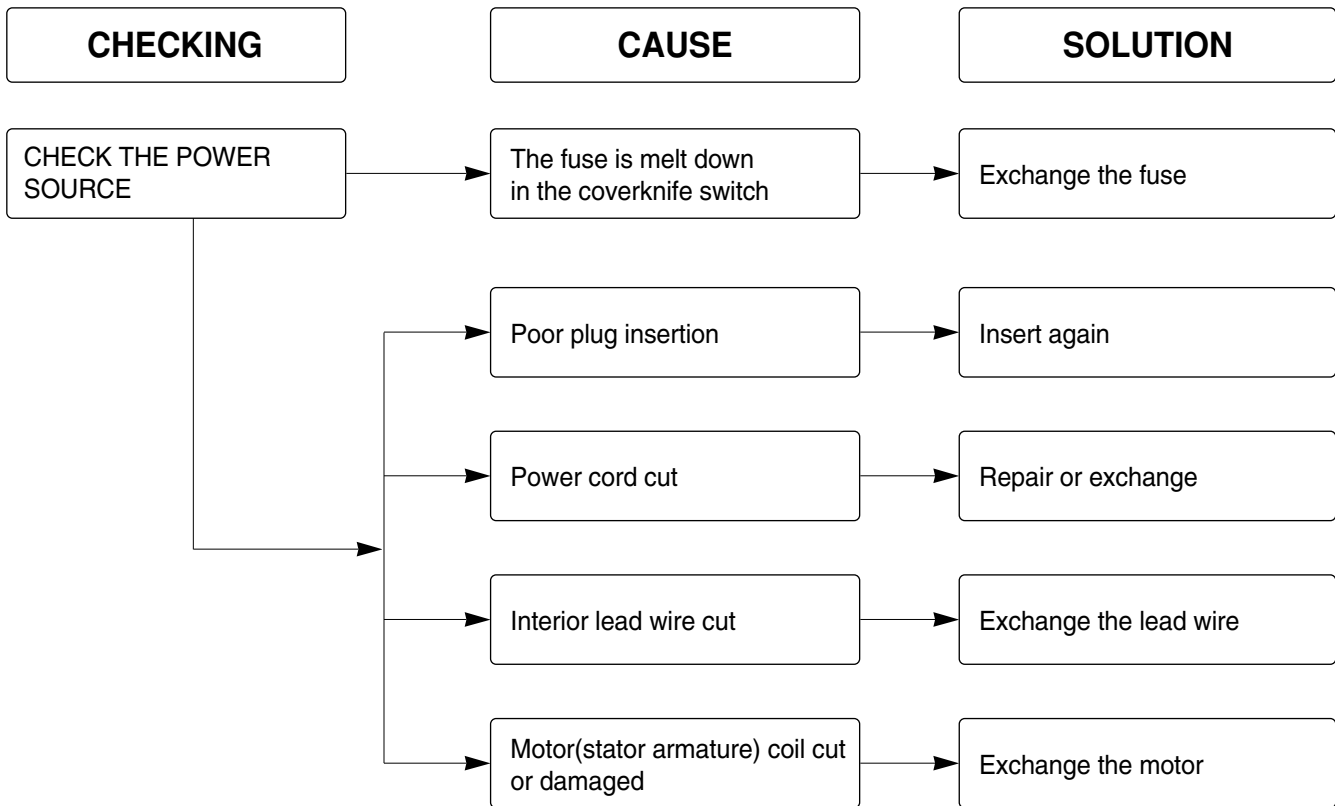
4. Disassembly of Motor Housing.

- 1) Remove the two screws fastening the body base.
- 2) Remove the one screw fastening the body base.

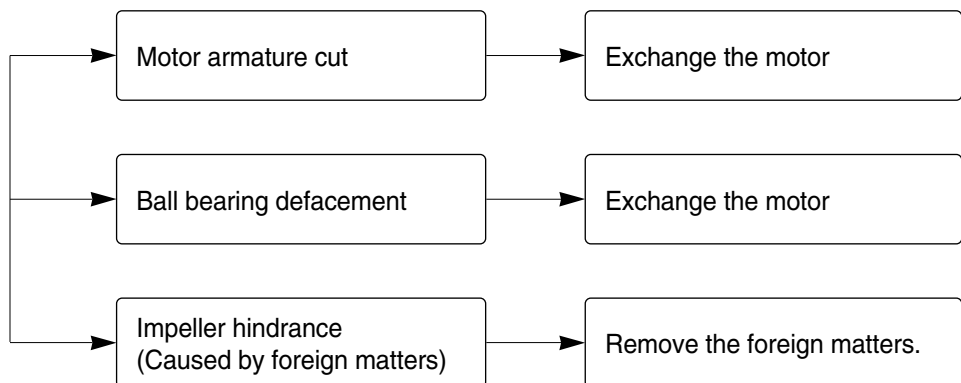


TROUBLE SHOOTING GUIDE

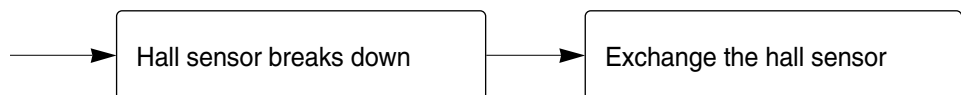
1. SWITCH ON BUT MOTOR DOES NOT TURN.



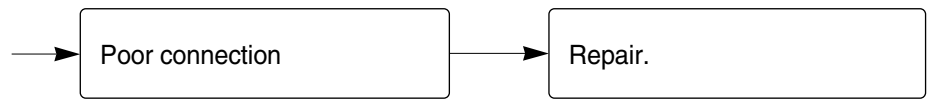
2. SWITCH ON, MOTOR DOES NOT TURN BUT BUZZES.



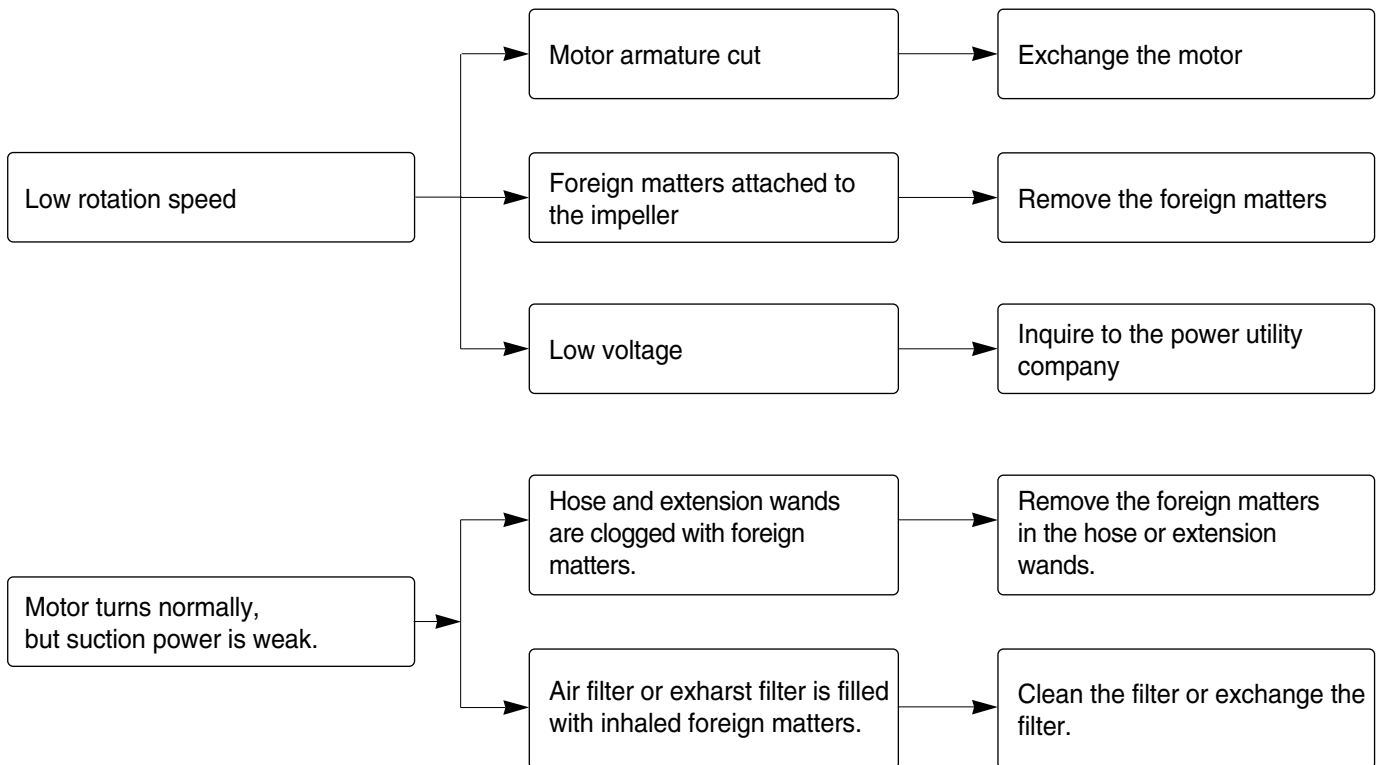
3. SWITCH ON, MOTOR TURNS DOWN AND BUZZES.



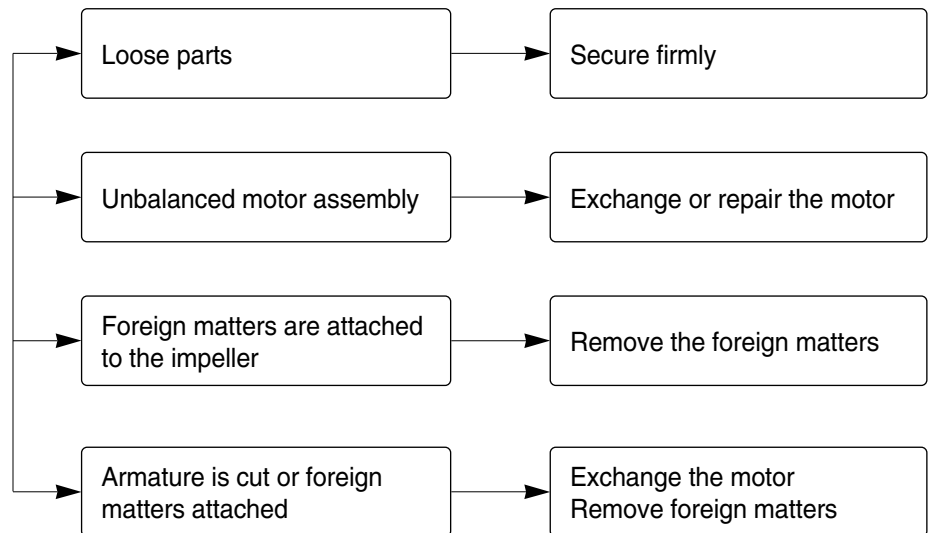
4. SWITCH OFF BUT MOTOR TURNS



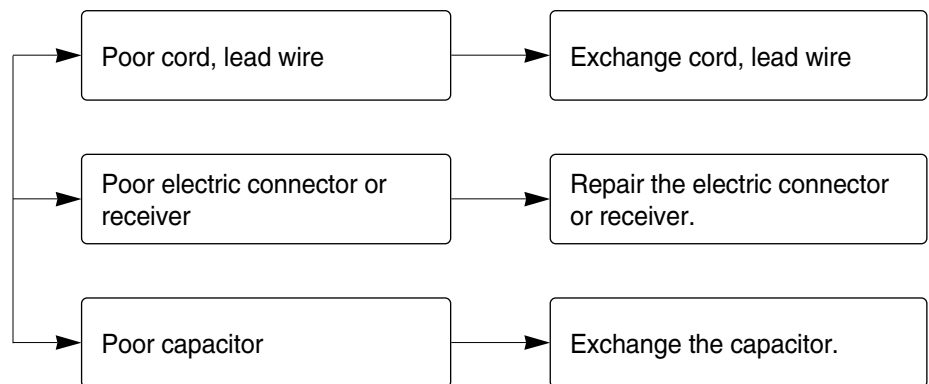
5. WEAK SUCTION POWER



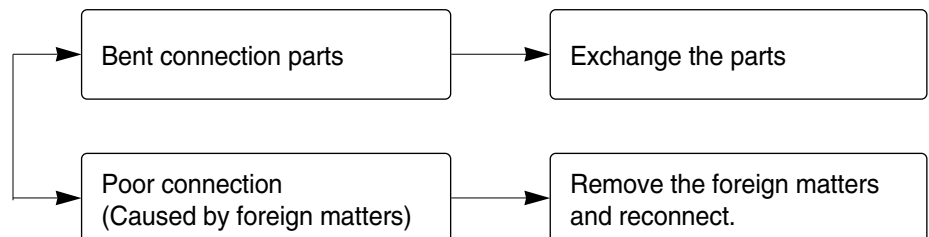
6. VIBRATION NOISES



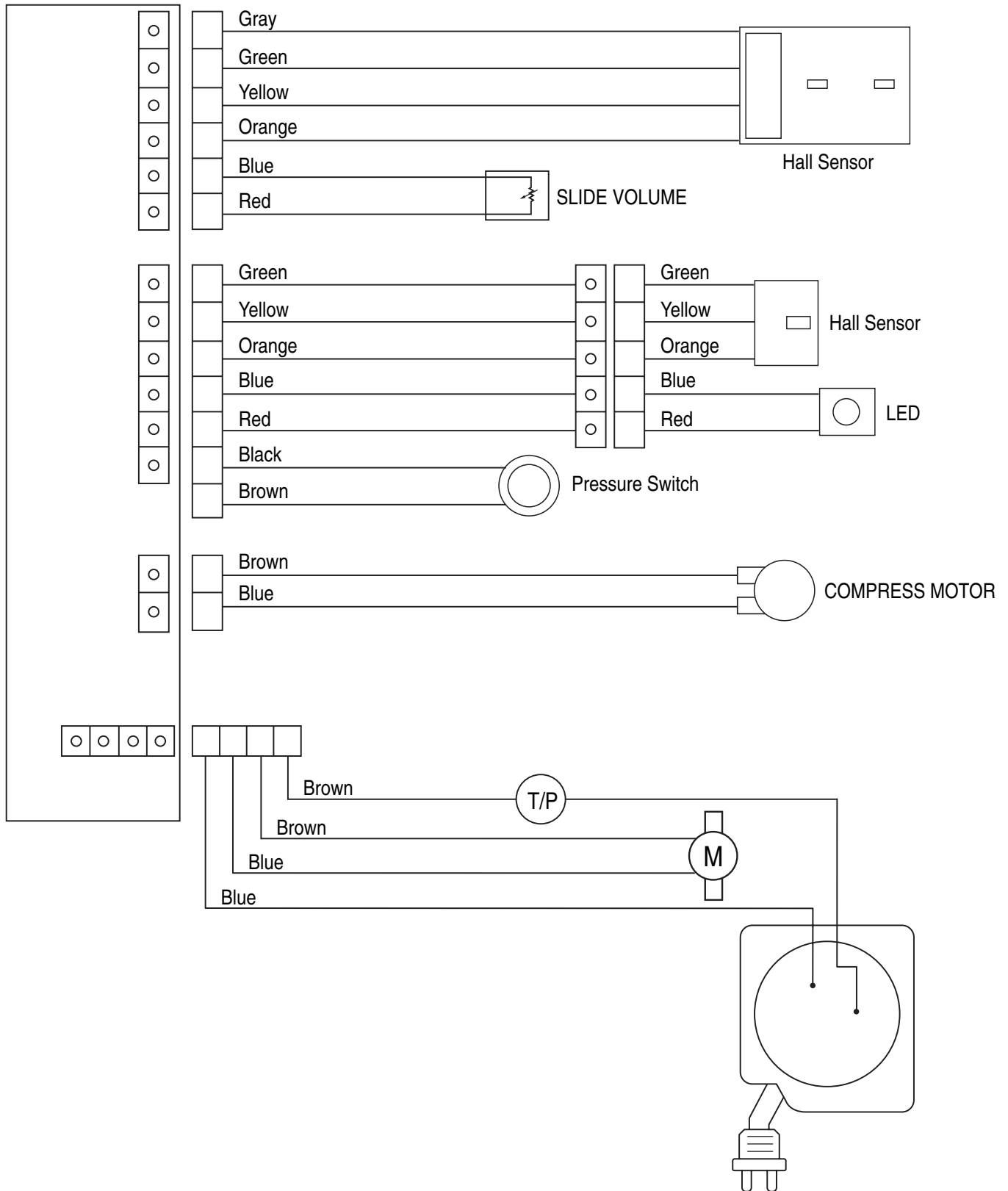
7. RADIO, TV RECEPTION DISTURBANCE



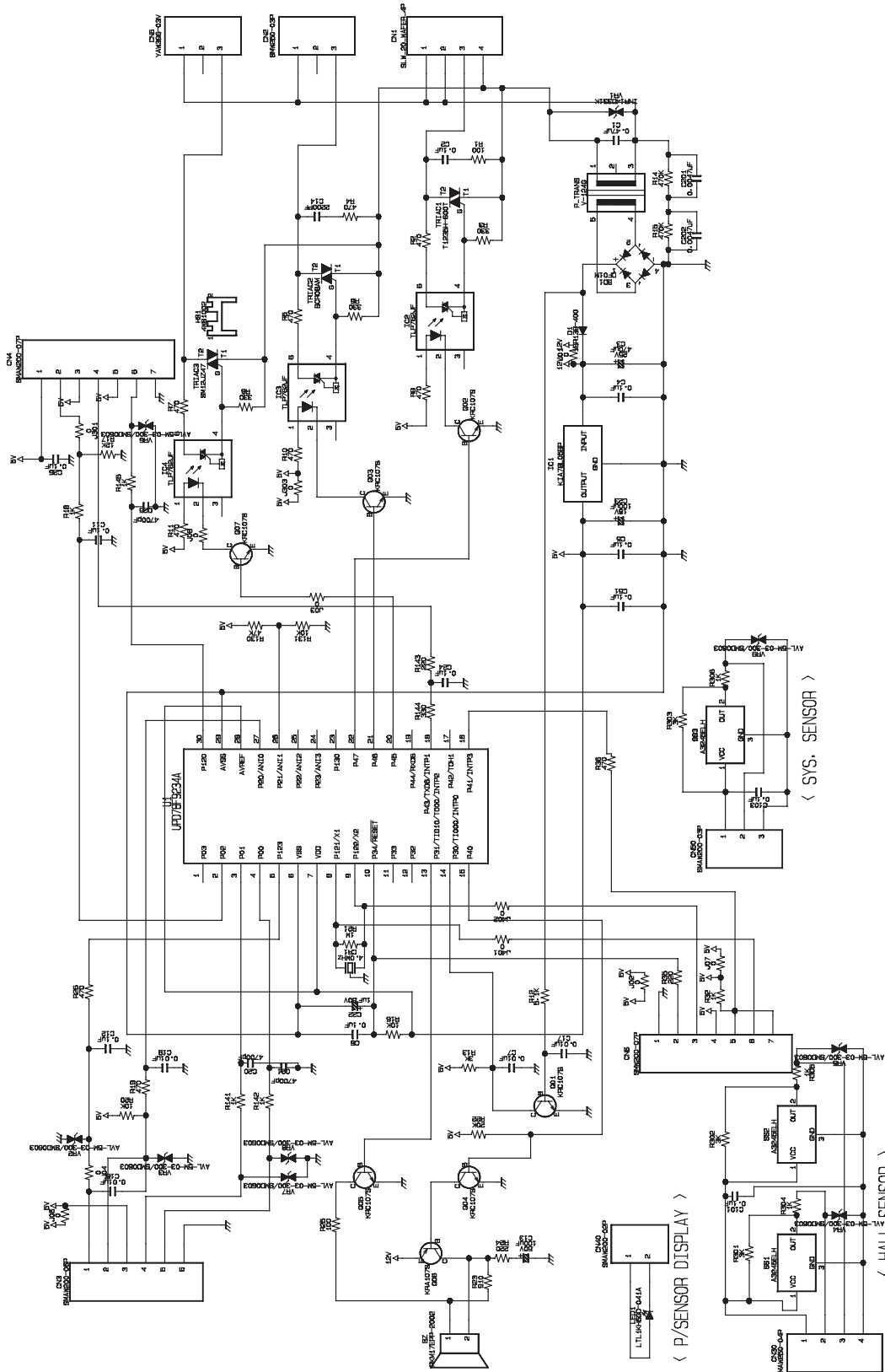
8. IMPROPER TUBE OF NOZZLE CONNECTION



SCHEMATIC DIAGRAM



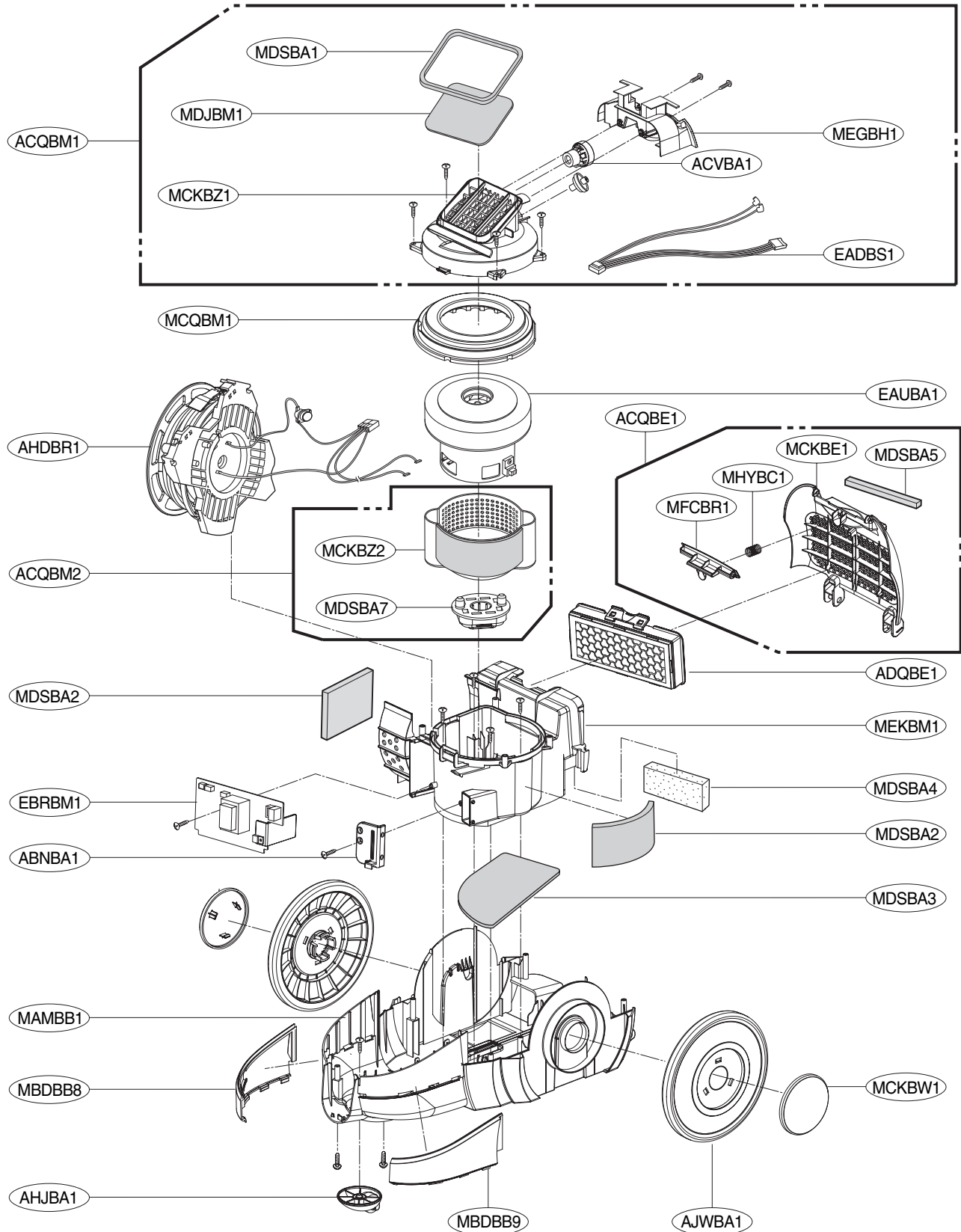
CIRCUIT DIAGRAM



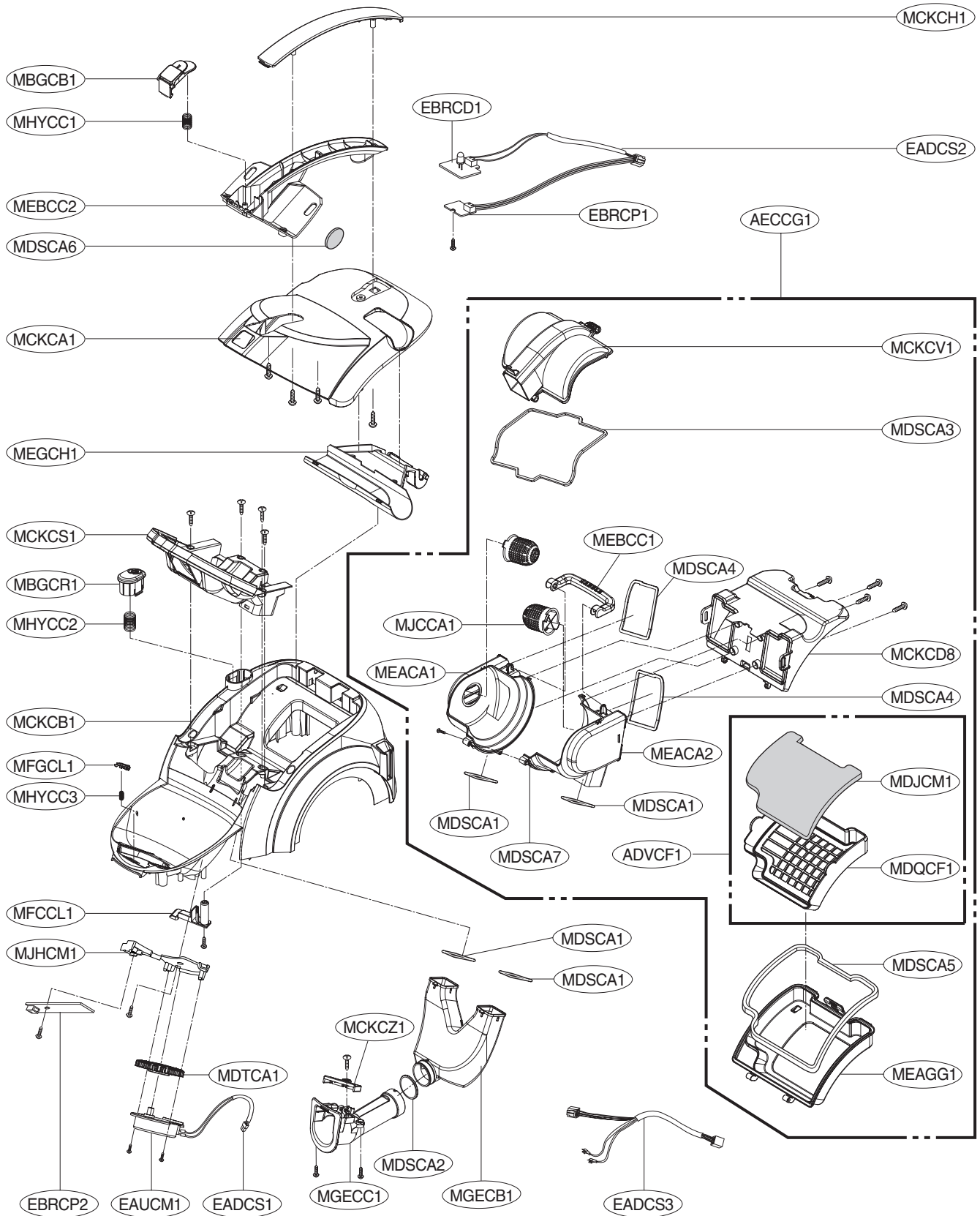
EXPLODED VIEW

BASE ASSEMBLY, BODY

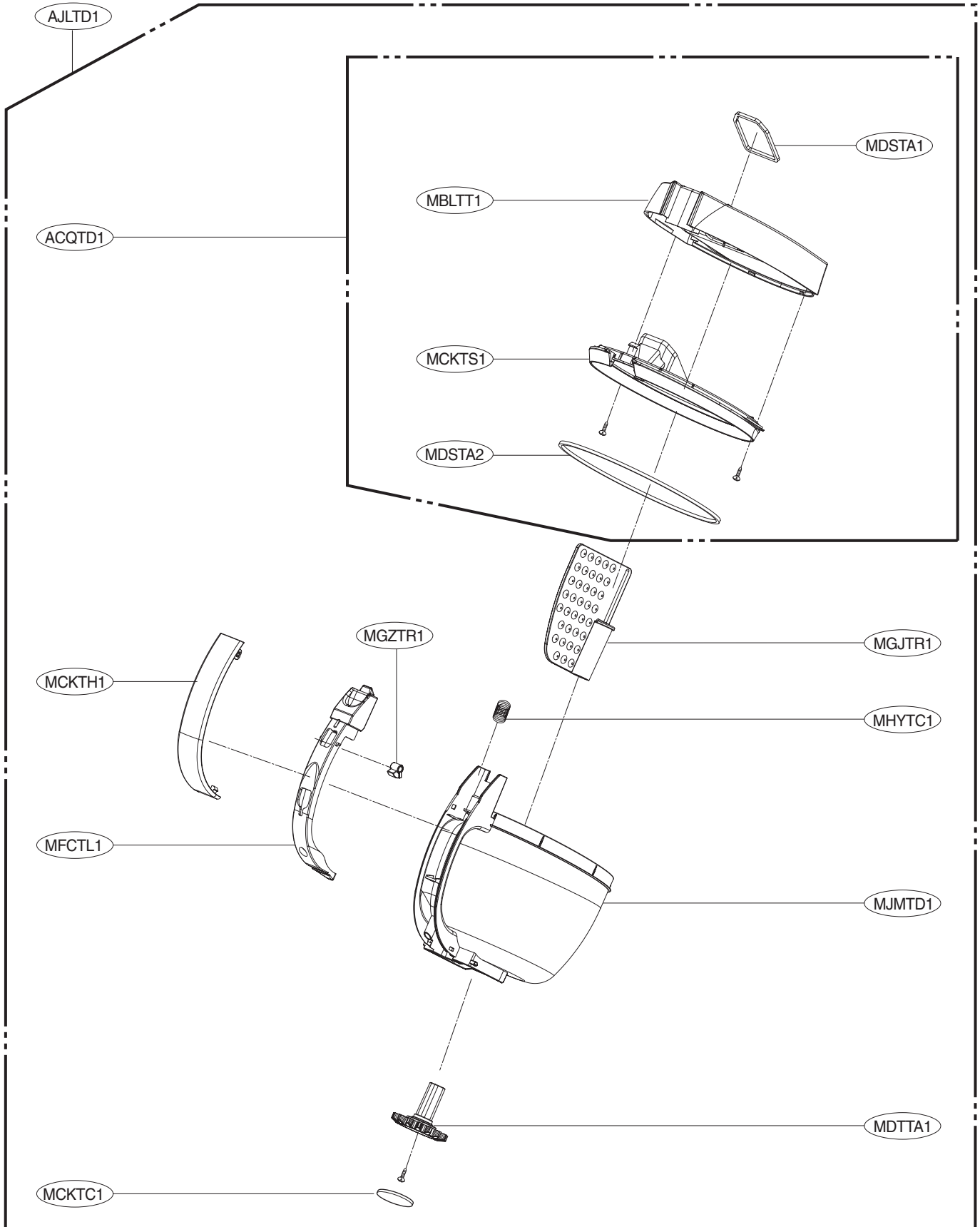
VK9820NHB(VK9820NHA.ABLQLGU)
VK9820NHC(VK9820NHA.ABKQLGU)



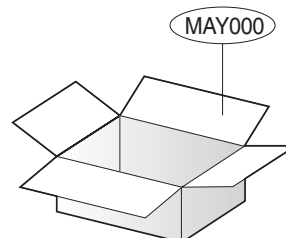
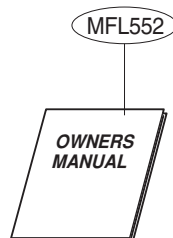
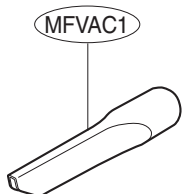
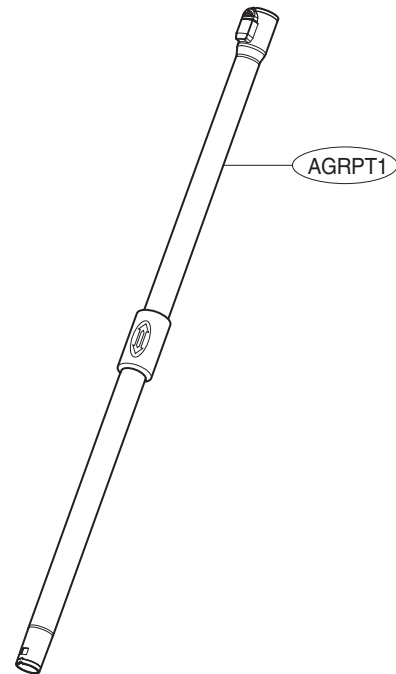
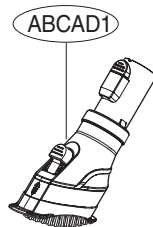
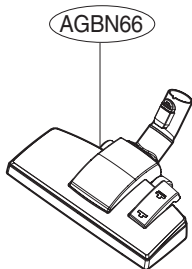
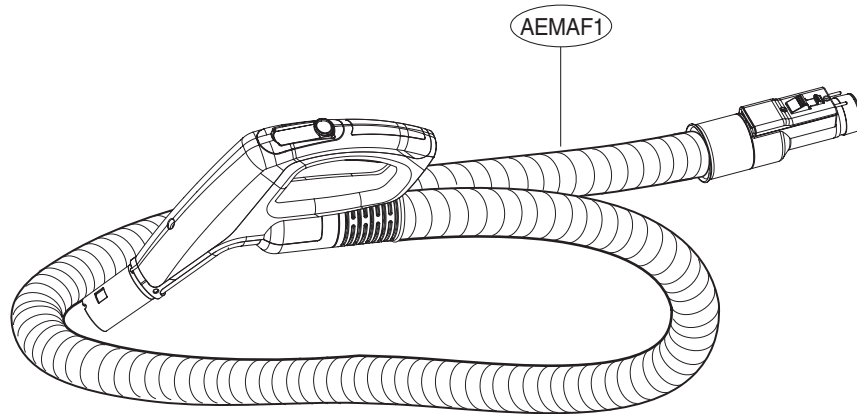
COVER ASSEMBLY, BODY



TANK ASSEMBLY, DUST



ACCESSORIES



REPLACEMENT PARTS LIST

VK9820NHB(VK9820NHA.ABLQLGU)

LOC. NO.	PART NO.	DESCRIPTION	SVC	COMMENT(REMARK)
ABCAD1	ABC65852301	Brush Assembly,Dust	R	
ABNBA1	ABN31571101	Cap Assembly	R	
ACQBE1	ACQ65857001	Cover Assembly,Exhaust	R	
ACQBM1	ACQ65856701	Cover Assembly,Motor	R	
ACQBM2	3551FI3745H	Cover Assembly,Motor	R	
ACQTD1	ACQ65888502	Cover Assembly,Dust	R	
ACVBA1	4901FI3435U	Damper Assembly	R	
ADQBE1	ADQ56691101	Filter Assembly,Exhaust	R	
ADVCF1	ADV65858101	Frame Assembly,Filter	R	
AECG1	AEC65858001	Guide Assembly,Air	R	
AEMAF1	AEM65868510	Hose Assembly,Flexible	R	
AGBN66	AGB65854301	Nozzle Assembly,Floor	R	
AGRPT1	AGR70487601	Pipe Assembly,Telescopic	R	
AHDBR1	AHD57008804	Reel Assembly	R	
AHJBA1	AHJ65857901	Roller Assembly	R	
AJLTD1	AJL65856603	Tank Assembly,Dust	R	
AJWBA1	AJW31561709	Wheel Assembly	R	
EADBS1	EAD56276701	Harness,Single	R	
EADCS1	6631FI3155Q	Harness,Single	R	
EADCS2	EAD56276703	Harness,Single	R	
EADCS3	EAD56276702	Harness,Single	R	
EAUBA1	EAU39812801	Motor Assembly,AC,Vacuum Cleaner	R	
EAUCM1	6549W1S011N	Motor, AC Synchronous	R	
EBRBM1	EBR41525303	PCB Assembly,Main	R	
EBRCD1	EBR51747701	PCB Assembly,Display	R	
EBRCP1	EBR41525602	PCB Assembly,Sub	R	
EBRCP2	EBR41525601	PCB Assembly,Sub	R	
MAMBB1	MAM49987301	Base,Body	R	
MAY000	MAY58921502	Box	R	
MBDBB8	MBD50004001	Bumper,Body	R	
MBDBB9	MBD50004801	Bumper,Body	R	
MBGCB1	MBG53465602	Button,Release	R	
MBGCR1	MBG47790802	Button,Cord Reel	R	
MBLTT1	MBL53527702	Cap,Tank	R	
MCKBE1	MCK53530401	Cover,Exhaust Filter	R	
MCKBW1	MCK33920604	Cover,Wheel	R	
MCKBZ1	MCK53530001	Cover,Motor Housing	R	
MCKBZ2	3550FI1824A	Cover,Motor	R	
MCKCA1	MCK53457206	Cover,Decor	R	

R : SERVICE PARTS

LOC. NO.	PART NO.	DESCRIPTION	SVC	COMMENT(REMARK)
MCKCB1	MCK50008501	Cover,Body	R	
MCKCD8	MCK53458201	Cover,Decor	R	
MCKCH1	MCK53466201	Cover,Handle	R	
MCKCS1	MCK53467501	Cover,Body(Sub)	R	
MCKCV1	MCK53457701	Cover,Guide	R	
MCKCZ1	3550FI3802A	Cover,Terminal	R	
MCKTC1	MCK47375601	Cover,Sensor	R	
MCKTH1	MCK53527901	Cover,Handle	R	
MCKTS1	MCK53527802	Cover,Dust	R	
MCQBM1	MCQ47798401	Damper,Motor Mount	R	
MDJBE1	MDJ49556601	Filter,Exhaust	R	
MDJBM1	MDJ50005201	Filter,Motor Safety	R	
MDJCM1	MDJ54988501	Filter,Motor Safety	R	
MDQCF1	MDQ53516501	Frame,Filter	R	
MDSBA1	MDS49556114	Gasket	R	
MDSBA2	MDS49531401	Gasket	R	
MDSBA3	MDS55182701	Gasket	R	
MDSBA4	MDS55183101	Gasket	R	
MDSBA5	MDS49556801	Gasket	R	
MDSBA7	MCQ53269001	Damper,Sealing	R	
MDSCA1	MDS54997501	Gasket	R	
MDSCA2	MDS49556113	Gasket	R	
MDSCA3	MDS49556112	Gasket	R	
MDSCA4	MDS54988301	Gasket	R	
MDSCA5	MDS49556109	Gasket	R	
MDSCA7	MDS49556104	Gasket	R	
MDSTA1	MDS54998101	Gasket	R	
MDSTA2	MDS54985701	Gasket	R	
MDTCA1	MDT35353701	Gear	R	
MDTTA1	MDT47375501	Gear	R	
MEACA1	MEA53464101	Guide,Air	R	
MEACA2	MEA53461601	Guide,Air	R	
MEAGG1	MEA53465501	Guide,Filter	R	
MEBCC1	MEB53467201	Handle,Carrier	R	
MEBCC2	MEB53464705	Handle,Carrier	R	
MEGBH1	MEG53530101	Holder,Cover	R	
MEGCH1	MEG53466105	Holder,Fixing	R	
MEKBM1	MEK50003401	Housing,Motor	R	
MFCBR1	MFC53530202	Lever,Release	R	

R : SERVICE PARTS

LOC. NO.	PART NO.	DESCRIPTION	SVC	COMMENT(REMARK)
MFCCL1	MFC53516201	Lever,Bottom	R	
MFCTL1	MFC53528001	Lever,Release	R	
MFGCL1	MFG53516303	Locker,Connector	R	
MFL552	MFL57001301	Manual,Owners	R	
MFVAC1	MFV55007301	Nozzle,Crevise	R	
MGEGB1	MGE53468001	Pipe,Bending	R	
MGECC1	MGE53467801	Pipe,Connector	R	
MGJTR1	MGJ53529801	Plate,Rotation	R	
MGZTR1	MGZ47799901	Ring,Guide	R	
MHYBC1	4970FI4230K	Spring,Coil	R	
MHYCC1	MHY37941602	Spring,Coil	R	
MHYCC2	4970FI4511Y	Spring,Coil	R	
MHYCC3	4970FI4694M	Spring,Coil	R	
MHYTC1	4970FI4511X	Spring,Coil	R	
MJCCA1	MJC47358301	Strainer,Inner	R	
MJHCM1	MJH47371601	Supporter,Motor	R	
MJMTD1	MJM53522001	Tank,Dust	R	

R : SERVICE PARTS

REPLACEMENT PARTS LIST

VK9820NHC(VK9820NHA.ABKQLGU)

LOC. NO.	PART NO.	DESCRIPTION	SVC	COMMENT(REMARK)
ABCAD1	ABC65852302	Brush Assembly,Dust	R	
ABNBA1	ABN31571101	Cap Assembly	R	
ACQBE1	ACQ65857002	Cover Assembly,Exhaust	R	
ACQBM1	ACQ65856702	Cover Assembly,Motor	R	
ACQBM2	3551FI3745H	Cover Assembly,Motor	R	
ACQTD1	ACQ65888506	Cover Assembly,Dust	R	
ACVBA1	4901FI3435U	Damper Assembly	R	
ADQBE1	ADQ56691101	Filter Assembly,Exhaust	R	
ADVCF1	ADV65858101	Frame Assembly,Filter	R	
AECG1	AEC65858001	Guide Assembly,Air	R	
AEMAF1	AEM65868503	Hose Assembly,Flexible	R	
AGBN66	AGB65854302	Nozzle Assembly,Floor	R	
AGRPT1	AGR70487602	Pipe Assembly,Telescopic	R	
AHDBR1	AHD57008804	Reel Assembly	R	
AHJBA1	AHJ65857902	Roller Assembly	R	
AJLTD1	AJL65856609	Tank Assembly,Dust	R	
AJWBA1	AJW31561708	Wheel Assembly	R	
EADBS1	EAD56276701	Harness,Single	R	
EADCS1	6631FI3155Q	Harness,Single	R	
EADCS2	EAD56276703	Harness,Single	R	
EADCS3	EAD56276702	Harness,Single	R	
EAUBA1	EAU39812801	Motor Assembly,AC,Vacuum Cleaner	R	
EAUCM1	6549W1S011N	Motor, AC Synchronous	R	
EBRBM1	EBR41525303	PCB Assembly,Main	R	
EBRCD1	EBR51747701	PCB Assembly,Display	R	
EBRCP1	EBR41525602	PCB Assembly,Sub	R	
EBRCP2	EBR41525601	PCB Assembly,Sub	R	
MAMBB1	MAM49987302	Base,Body	R	
MAY000	MAY58921502	Box	R	
MBDBB8	MBD50004002	Bumper,Body	R	
MBDBB9	MBD50004802	Bumper,Body	R	
MBGCB1	MBG53465602	Button,Release	R	
MBGCR1	MBG47790803	Button,Cord Reel	R	
MBLTT1	MBL53527705	Cap,Tank	R	
MCKBE1	MCK53530402	Cover,Exhaust Filter	R	
MCKBW1	MCK33920604	Cover,Wheel	R	
MCKBZ1	MCK53530001	Cover,Motor Housing	R	
MCKBZ2	3550FI1824A	Cover,Motor	R	
MCKCA1	MCK53457203	Cover,Decor	R	

R : SERVICE PARTS

LOC. NO.	PART NO.	DESCRIPTION	SVC	COMMENT(REMARK)
MCKCB1	MCK50008502	Cover,Body	R	
MCKCD8	MCK53458201	Cover,Decor	R	
MCKCH1	MCK53466201	Cover,Handle	R	
MCKCS1	MCK53467502	Cover,Body(Sub)	R	
MCKCV1	MCK53457701	Cover,Guide	R	
MCKCZ1	3550FI3802A	Cover,Terminal	R	
MCKTC1	MCK47375601	Cover,Sensor	R	
MCKTH1	MCK53527901	Cover,Handle	R	
MCKTS1	MCK53527806	Cover,Dust	R	
MCQBM1	MCQ47798401	Damper,Motor Mount	R	
MDJBE1	MDJ49556601	Filter,Exhaust	R	
MDJBM1	MDJ50005201	Filter,Motor Safety	R	
MDJCM1	MDJ54988501	Filter,Motor Safety	R	
MDQCF1	MDQ53516501	Frame,Filter	R	
MDSBA1	MDS49556114	Gasket	R	
MDSBA2	MDS49531401	Gasket	R	
MDSBA3	MDS55182701	Gasket	R	
MDSBA4	MDS55183101	Gasket	R	
MDSBA5	MDS49556801	Gasket	R	
MDSBA7	MCQ53269001	Damper,Sealing	R	
MDSCA1	MDS54997501	Gasket	R	
MDSCA2	MDS49556113	Gasket	R	
MDSCA3	MDS49556112	Gasket	R	
MDSCA4	MDS54988301	Gasket	R	
MDSCA5	MDS49556109	Gasket	R	
MDSCA7	MDS49556104	Gasket	R	
MDSTA1	MDS54998101	Gasket	R	
MDSTA2	MDS54985701	Gasket	R	
MDTCA1	MDT35353701	Gear	R	
MDTTA1	MDT47375501	Gear	R	
MEACA1	MEA53464101	Guide,Air	R	
MEACA2	MEA53461601	Guide,Air	R	
MEAGG1	MEA53465501	Guide,Filter	R	
MEBCC1	MEB53467201	Handle,Carrier	R	
MEBCC2	MEB53464703	Handle,Carrier	R	
MEGBH1	MEG53530102	Holder,Cover	R	
MEGCH1	MEG53466103	Holder,Fixing	R	
MEKBM1	MEK50003402	Housing,Motor	R	
MFCBR1	MFC53530202	Lever,Release	R	

LOC. NO.	PART NO.	DESCRIPTION	SVC	COMMENT(REMARK)
MFCCL1	MFC53516201	Lever,Bottom	R	
MFCTL1	MFC53528001	Lever,Release	R	
MFGCL1	MFG53516302	Locker,Connector	R	
MFL552	MFL57001301	Manual,Owners	R	
MFVAC1	MFV55007302	Nozzle,Crevise	R	
MGEGB1	MGE53468001	Pipe,Bending	R	
MGECC1	MGE53467802	Pipe,Connector	R	
MGJTR1	MGJ53529801	Plate,Rotation	R	
MGZTR1	MGZ47799901	Ring,Guide	R	
MHYBC1	4970FI4230K	Spring,Coil	R	
MHYCC1	MHY37941602	Spring,Coil	R	
MHYCC2	4970FI4511Y	Spring,Coil	R	
MHYCC3	4970FI4694M	Spring,Coil	R	
MHYTC1	4970FI4511X	Spring,Coil	R	
MJCCA1	MJC47358301	Strainer,Inner	R	
MJHCM1	MJH47371601	Supporter,Motor	R	
MJMTD1	MJM53522001	Tank,Dust	R	

R : SERVICE PARTS

