



INSTRUCTIONS

-J03408

REV. 08-06-2004

Kit Number 53948-04

BOBTAIL REAR FENDER RACK KIT

General

This kit fits all 2004 and later XL (Sportster®) model motorcycles equipped with a Bobtail Rear Fender Kit and Installation Kit, H-D Part Number 69714-04A.

NOTE

Maximum luggage rack weight capacity is ten pounds (4.5 Kg).

WARNING

Do not exceed luggage rack weight capacity. Exceeding weight capacity can affect stability and handling, which could result in death or serious injury. (00373b)

See the Service Parts list for kit contents.

NOTE

A Service Manual for your model motorcycle is available from any Harley-Davidson dealer.

Additional Parts Required

For motorcycles with earlier Installation Kit 69714-04 installed, a Bracket Service Kit (H-D Part Number 60124-04) is also needed. This kit contains stronger brackets necessary to support the weight of this rack, and is available separately from any Harley-Davidson dealer.

NOTE

The Installation Kit can be determined by the following:

- The earlier license-plate brackets in Kit 69714-04 are black powder-coated.
- The later, **stronger** license-plate brackets found in Kit 69714-04A or 60124-04 have a yellow chromate finish.

Installation

1. Refer to the applicable Service Manual and remove the seat. Remove the seat retention nut and retainer from the rear fender and discard them.
2. Refer to the Service Manual and remove the tail lamp lens and bulb.

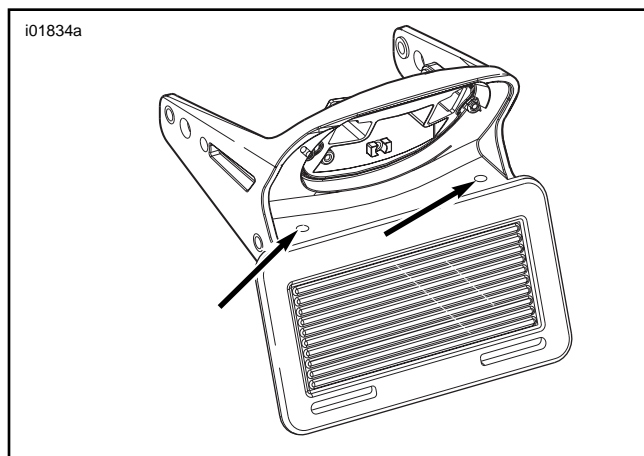


Figure 1. Rear Fender Rack Mounting Holes

NOTE

Cover the rear fender with a clean shop towel to prevent scratching. Damage to the finish could result.

3. Place the fender rack into position as follows:
 - a. Hold the carrier portion vertical and slide the rear mounting base onto the flat license plate bracket (see Figure 2).
 - b. Tilt the rack forward until the front mounting tab is centered over the seat retention nut hole.
 - c. Center the rear mounting base on the license plate bracket.
4. See Figure 1. Mark the position of the two rack mounting holes on the license bracket at the arrows.
5. Remove the fender rack and drill two small pilot holes in the marked locations.
6. From the underside of the license plate bracket, enlarge the two holes to 5/16" (8 mm) diameter.
7. See the Service Parts illustration. Reach from the rear and insert the seat retainer (11) into the hole in the fender from the underside, lining up the tab with the notch in the hole.
8. Install the protective tape (10) on the outside of the rear fender, surrounding the hole. Place the seat tab spacer (9) over the tape.

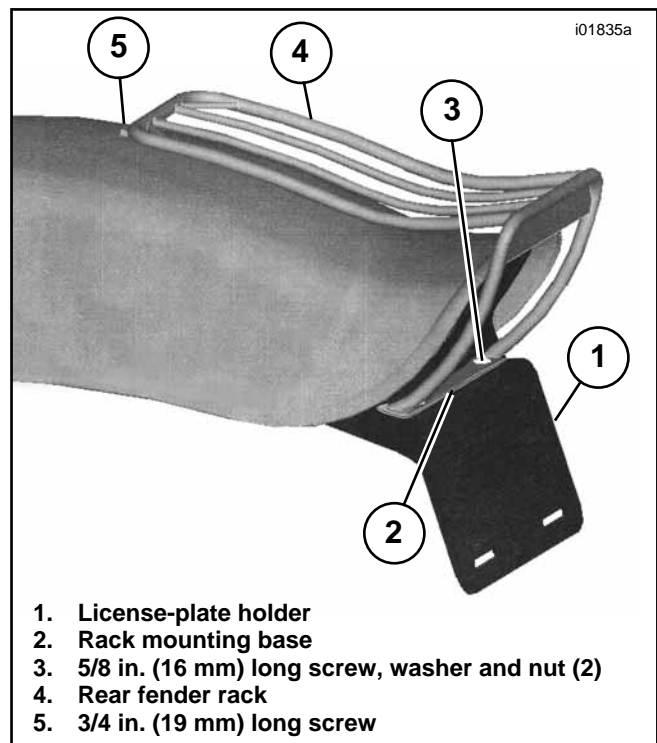


Figure 2. Installed Rear Fender Rack

9. **If a two-up seat is installed**, re-install the seat but do not install the mounting screw.
If a solo seat is installed, place the thick spacer washer (7) over the seat retention nut.
10. See Figure 2. Position the luggage rack on the license plate bracket as described in step 3.
11. Lower the front mounting tab of the rack over the seat rear mounting tab or spacer washer. Place the chrome flat washer (6) over the front rack mounting tab.
12. Insert the 3/4" (19 mm) long chrome socket head screw (5) through the chrome washer (6), the rack front tab, and the spacer or seat tab. Thread the screw into the retainer, but do not tighten.
13. Insert the two 5/8" (16 mm) long chrome socket head screws (2) through the rear rack mounting holes and the holes in the license plate bracket. Position the flat washers (3) and nuts (4) onto the screws from the underside, and tighten to 14 **in-lbs** (2 Nm).
14. Secure the rack and the front socket head screw to the retention nut. Tighten to 12 ft-lbs (16.3 Nm).

⚠ WARNING

After installing seat, pull upward on front of seat to be sure it is in locked position. While riding, a loose seat can shift causing loss of control, which could result in death or serious injury. (00070a)

15. Remove the protective shop towels.
16. Refer to the Service Manual and reinstall the tail light bulb and lens.

⚠ WARNING

Be sure that all lights and switches operate properly before operating motorcycle. Low visibility of rider can result in death or serious injury. (00316a)

17. Turn the ignition switch to the **IGN** position and check for proper tail lamp operation.

In Use

NOTE

Maximum luggage rack weight capacity is ten pounds (4.5 Kg).

⚠ WARNING

Do not exceed luggage rack weight capacity. Exceeding weight capacity can affect stability and handling, which could result in death or serious injury. (00373b)



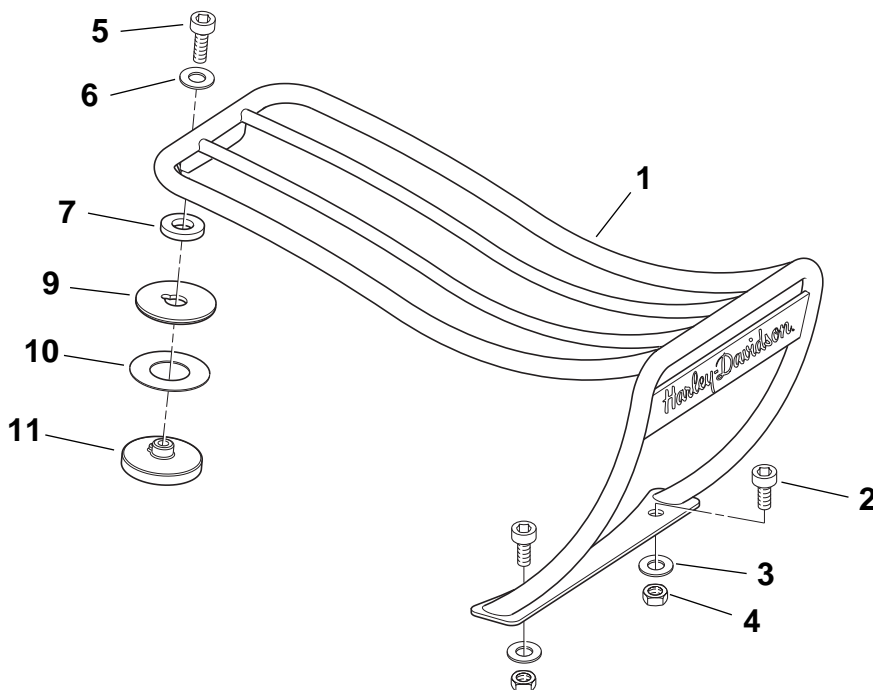
Service Parts

Part No. 53948-04

Date 08/04

Bobtail Rear Fender Rack

i02680



Item	Description	Part No.	Item	Description	Part No.
1	Rack, Bobtail fender	Not sold separately	6	Flat washer, 1/4" (chrome).	6339
2	Screw, socket head, 1/4"-20 x 5/8" (chrome) (2)	94311-91T	7	Washer, thick (for solo seat only)	6397B
3	Flat washer, 1/4" (2)	6703	8	Seat tab retainer kit	59787-03
4	Hex nut, 1/4"-20 (2)	7688		Retainer kit includes:	
5	Screw, socket head, 1/4"-20 x 3/4" (chrome)	94312-91T	9	Spacer, seat tab	Not sold separately
			10	Protective tape	Not sold separately
			11	Retainer, seat tab	Not sold separately