



INSTRUCTIONS

-J01924

REV. 11-8-00

Kit Number 90126-00

DYNA SADDLEBAG KIT

General

This saddlebag kit is designed to fit 1996 and later Dyna Model Motorcycles, except 2000 and 2001 FXDX and 2001 FXDXT.

See Service Parts Pages for kit contents.

WARNING

Additional weight can affect motorcycle stability, handling characteristics and safe operating speed. Do not exceed 7 lbs (3.2 Kg) maximum load in each saddlebag. Evenly distribute weight between each saddlebag. Improper loading may lead to instability which could result in an accident and death or serious injury.

Installation

NOTE

A Service Manual for your vehicle is available at your Harley-Davidson Dealer.

1. Remove seat.

WARNING

To protect against shock and accidental start-up of vehicle, disconnect the negative battery cable before proceeding. Inadequate safety precautions could result in death or serious injury.

WARNING

Always disconnect the negative cable first. If the positive cable should contact ground with the negative cable installed, the resulting sparks may cause a battery explosion resulting in death or serious injury.

2. Disconnect battery cables, negative cable first.
3. On FXDS-Conv models, follow instructions in Service Manual and remove existing saddlebags and mounting hardware.

Remove Turn Signals

4. Refer to the Appendix covering Amp Electrical Connectors in applicable Service Manual and locate left and right signal wiring at turn signal connector under seat. Unplug connector and following instructions in Service Manual, remove terminals from connector.
5. On 1996 to 1998 Models, pull turn signal wires through clips (if present), and fender.

On 1999 and later models, perform the following:

- a. Remove two screws securing tail/stop lamp lens assembly and remove lens assembly.

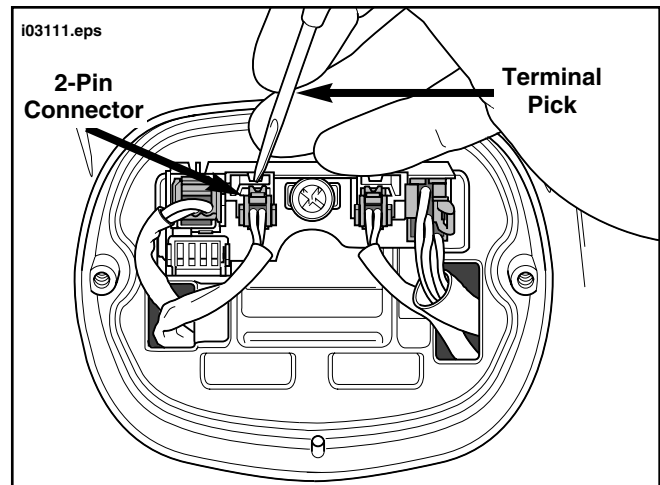


Figure 1. Disconnect Turn Signals (2000 Shown)

- b. See Figure 1. Disconnect left and right turn signal (2-Place) connectors from sockets. Cut wires at connector as close to terminal end as possible. Discard connectors and terminals.
 - c. Gently pull turn signal wiring out (from tail/stop lamp assembly, and from clip under rear of fender).
6. See Figure 2. Remove rear turn signals according to the following:

FXD, 1999 FXDX, FXDL and FXDWG. Remove signal lamp assembly by removing bolt inside rear fender. Remove lamp housing from bracket and pull wiring through bracket. Repeat for the opposite side. Discard lamp brackets.

FXDS-CONV. Unscrew the lamp housing from the turn signal bar and pull wiring through fender and bar. Repeat for the opposite lamp. Remove nuts under fender securing turn signal bar. Discard bar.

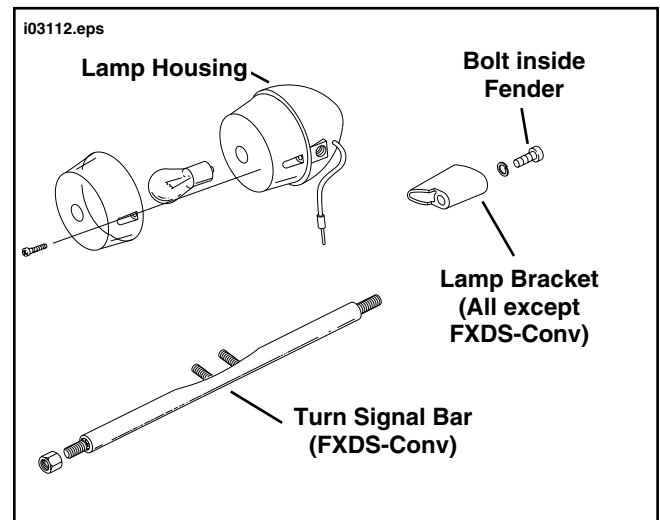


Figure 2. Rear Turn Signal Mounting Hardware

Install Saddlebag Support

NOTE

When performing Steps 7 through 23 completely perform procedures for one side before continuing to the opposite side. This will ensure fender will remain supported during installation.

- See Figure 3. Remove remaining bolt (from inside fender) securing strut to fender.

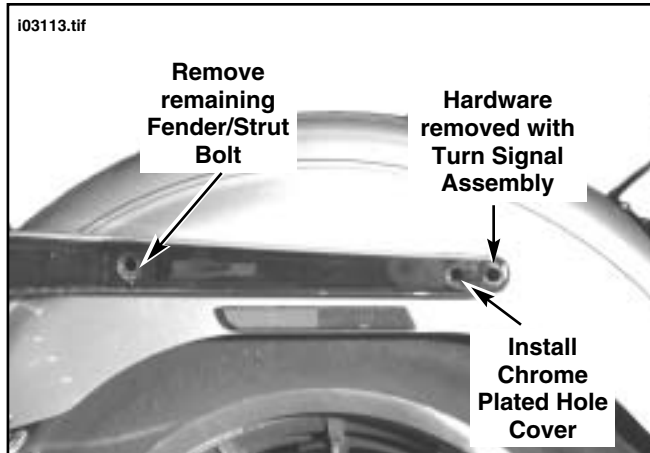


Figure 3. Remove Remaining Strut Hardware

- Obtain chrome plated hole cover (P/N 56239-93) and press into hole of original turn signal wire entrance location. Repeat for the opposite side.

NOTE

Before proceeding to the next step, determine which of the following cases pertains to your installation and install accordingly.

Case 1. Installing kit onto stock motorcycle.

Case 2. Installing kit onto stock motorcycle with non-stock, wide seat.

Case 3. Installing kit onto motorcycle with detachable docking points.

- See Figure 4. Obtain left saddlebag support.

Case 1. Apply Loctite 243 (blue, provided in kit) onto threads of two bolts (P/N 4164). Install washers (P/N 6701) onto bolts. From the inside of the fender, place bolt and washer through hole in fender and strut. Secure bolt into threads of saddlebag support.

Case 2. Apply Loctite 243 (blue, provided in kit) onto threads of two bolts (P/N 4164). Install washers (P/N 6701) onto bolts. From the inside of the fender, place bolt and washer through hole in fender and strut. Place spacer (P/N 91414-00) between strut cover and saddlebag support. Secure bolt into threads of saddlebag support.

Case 3. Apply Loctite 243 (blue, provided in kit) onto threads of two bolts (P/N 4218). Install washers (P/N 6701) onto bolts. From the inside of the fender, place bolt and washer through hole in fender and strut. Place detachable docking point between strut cover and saddlebag support. Secure bolts into threads of saddlebag support.

- If installing 3 inch (Standard Style) Signal Lamps, proceed to step 11.

If installing 2-3/8 inch (Deuce Style) Signal Lamps, proceed to step 12.

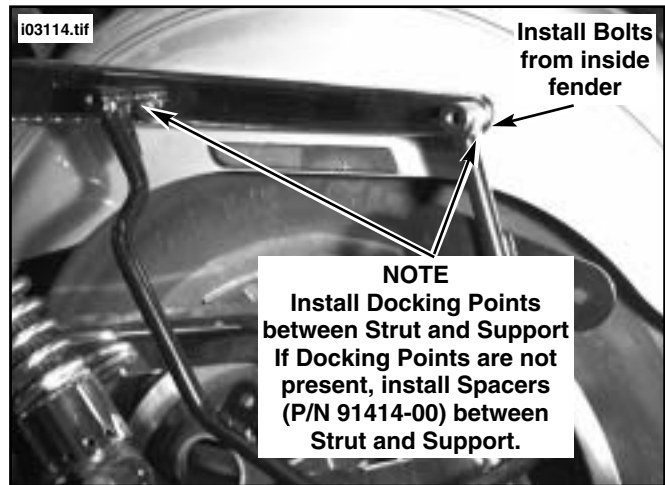


Figure 4. Install Saddlebag Support

- Standard Style Signal Lamp:** See Figure 5. Obtain left signal lamp housing removed previously and left turn signal relocation bracket (P/N 90139-00). Remove conduit and cut wiring 12 inches from entrance to lamp housing. Remove conduit and cut wiring 12 inches from entrance to lamp housing. Cut a 1 inch section off conduit and slide it over wiring up to the entrance of the lamp housing. Moisten wires with wet paper towel or rag and insert wires through relocation bracket as shown until wires exit from opposite end of tube. Slide conduit down to protect wiring at wire entrance of relocation bracket.

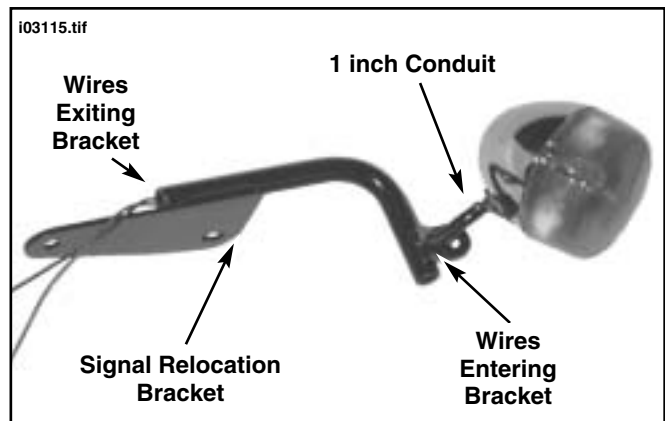


Figure 5. Install Wiring and Conduit into Bracket

See Figure 6. Apply LOCTITE 243 (Blue) to screw (P/N 3538). Using screw and lock washer (P/N 7042), attach lamp to signal relocation bar as shown. Tighten securely. Repeat step 11 for the opposite signal.

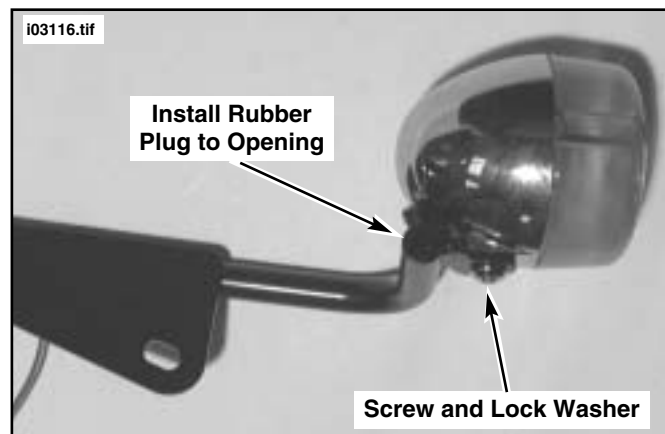


Figure 6. Installing 3 inch Turn Signals (Standard Style)

12. **Deuce Style Signal Lamps:** See Figure 5. Obtain left signal lamp housing and left turn signal relocation bracket (P/N 90139-00) Cut wiring 12 inches from entrance to lamp housing. Moisten wires with wet paper towel or rag and insert wires through relocation bracket as shown until wires exit from opposite end of tube.

See Figure 7. Apply LOCTITE 243 (Blue) to screw (P/N 4092). Using screw, lock washer (P/N 7042) and spacer (P/N 65849-01), attach lamp to signal relocation bar as shown. Spacer should be installed between signal and signal relocation bar. Tighten securely. Repeat step 12 for the opposite signal.

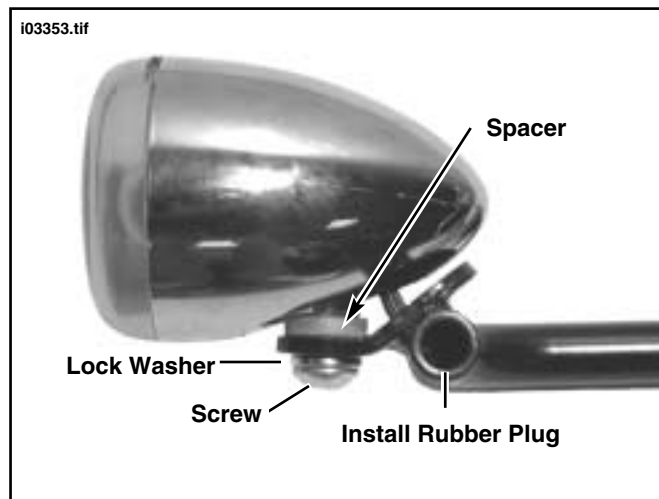


Figure 7. Installing 2-3/8 inch Turn Signals (Deuce Style)

13. Install small black rubber plug (P/N 53644-00) to cover opening of tube on bracket. Repeat for opposite side.
14. See Figure 8. Obtain Wiring Harness and two Sealed Butt Connectors from kit. Following instructions in Service Manual under "Installing Sealed Butt Connectors", match wire colors and splice wiring from turn signal to harness. Slide conduit from harness over Butt Splices and approximately 2 inches into bracket tube.

NOTE

Cutting one of the wires slightly shorter before installing connectors will "Stagger" the location of the butt splices and make sliding conduit over wiring much easier.

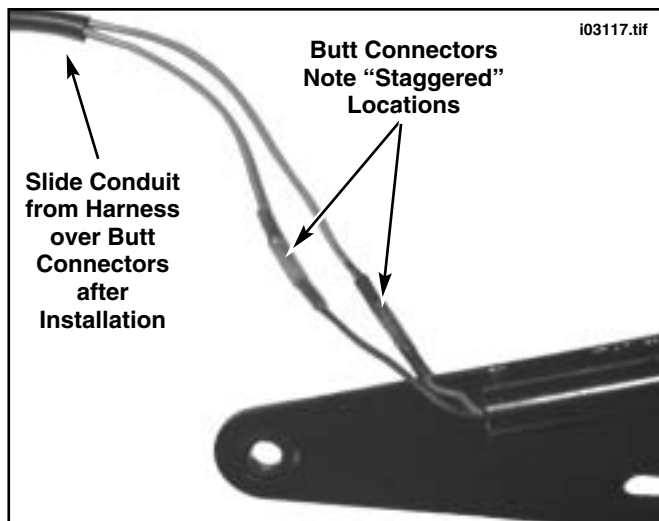


Figure 8. Install Wiring Harness

15. See Figure 9. Obtain three adhesive backed wire harness retaining clips (P/N 10102). Remove adhesive and install clip under fender strut in front of rear shock as shown in upper portion of Figure 8. Install two remaining clips under fender strut at locations shown in lower portion of Figure 8.

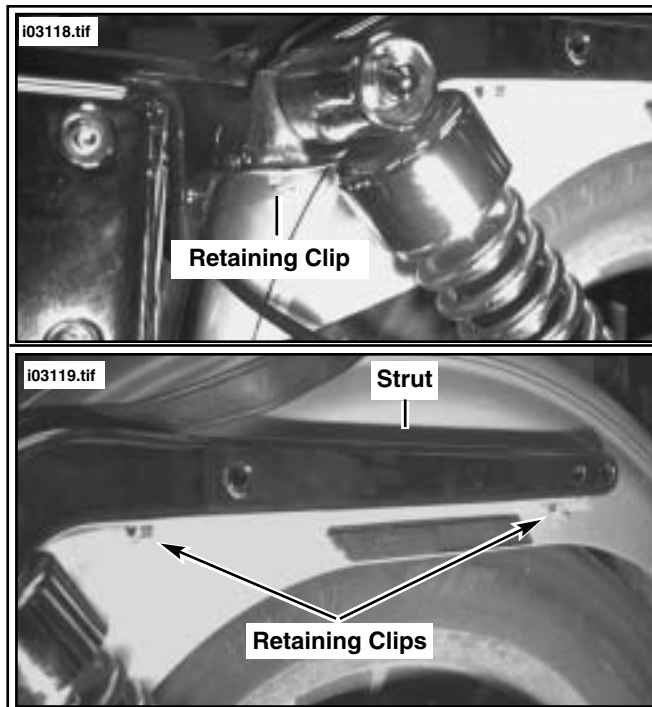


Figure 9. Install Wire Harness Retaining Clips

16. See Figure 10. Obtain left saddlebag, 3 small grommets (P/N 90148-00) and 2 large grommets (P/N 11447). Install the large grommets to the upper two holes and 3 small grommets to lower 3 holes in the saddlebag assembly as shown.
17. Install two large spacers (P/N 90149-00) into the upper grommets and three small spacers (P/N 90186-00) into the lower grommets as shown.

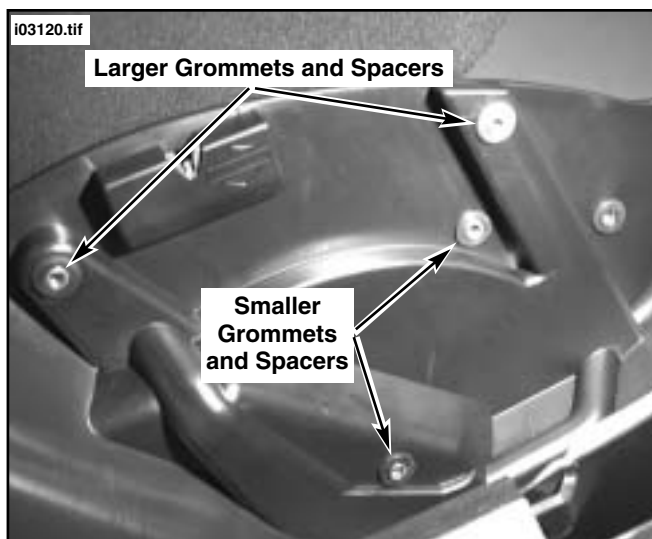


Figure 10. Install Grommets and Spacers

18. See Figure 11. Obtain two large screws (P/N 4098) and four large flat washers (P/N 6416). Install saddlebag to support with screw through washer and grommet (in saddlebag), then through washer (P/N 6416) and into threaded portion of saddlebag support. Repeat for the remaining screw and two washers. Do not tighten completely at this time.
19. Obtain screw P/N 4219, washer P/N 6333 and flange nut P/N 7531 and secure bottom portion of saddlebag to support.
20. Obtain left turn signal assembled previously. Insert screws (P/N 4219) and washers (P/N 6333) into saddlebag, then into left turn signal bracket and through saddlebag support. Install flange nuts (P/N 7531).
21. Return to all screws and flange nuts installed in Steps 18 through 20 and tighten all hardware securely.
22. Return to left side wiring harness and route harness along bottom of strut and insert into retaining clips installed in Step 15. Adjust, if necessary, then bend clip tabs to capture wiring in place.

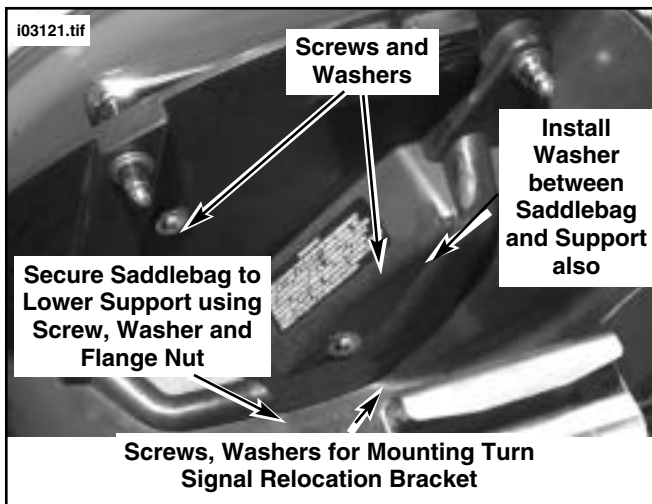


Figure 11. Install Saddlebag to Support

23. See Figure 12. Continue routing wiring harness under front of strut in front of fender and through middle boxed area of frame to Connector [7].

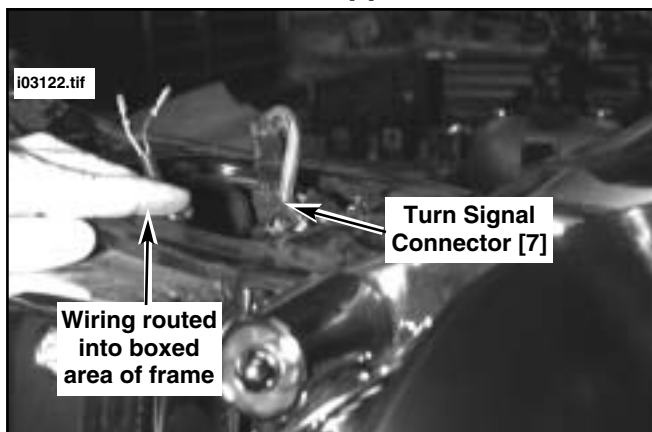


Figure 12. Route Wiring to Connector [7]

24. Follow instructions in the Service Manual to install pin terminals to cavities in Turn Signal Connector [7].
25. Repeat Steps 7 through 24 for the right saddlebag.

If Necessary, install Amber Reflectors to Saddlebags

NOTE

In the next step, red reflectors are pre-installed to meet the US and Canadian requirements. Amber reflectors are provided and can be installed to meet the requirements of markets other than the US or Canada.

WARNING

Federal Motor Vehicle Safety Standard (FMVSS) 108 requires all motorcycles to be equipped with side reflectors. Install, or have Dealer install, the reflectors supplied with this kit. Visibility is a major concern to motorcyclists. Failure to install all side reflectors could result in an accident and death or serious injury.

26. If amber reflectors need to be installed, perform the following: See Figure 13. Locate reflector mounting location under the Harley-Davidson Logo. Gently pry out existing reflector.



Figure 13. Install Reflectors

27. Use isopropyl alcohol to thoroughly clean the area, then let dry completely. Remove adhesive backing and install amber reflector. Repeat for opposite saddlebag. Let adhesive cure for 24 hours.
28. Connect battery cables, positive cable first.

WARNING

Always connect the positive battery cable first. If the positive cable should contact ground with the negative cable installed, the resulting sparks may cause a battery explosion which could result in death or serious injury.

29. Install seat.

WARNING

After installing seat, pull upward on front of seat to be sure it is locked in position. If seat is loose, it could shift position during vehicle operation causing loss of control of vehicle and death or serious injury.

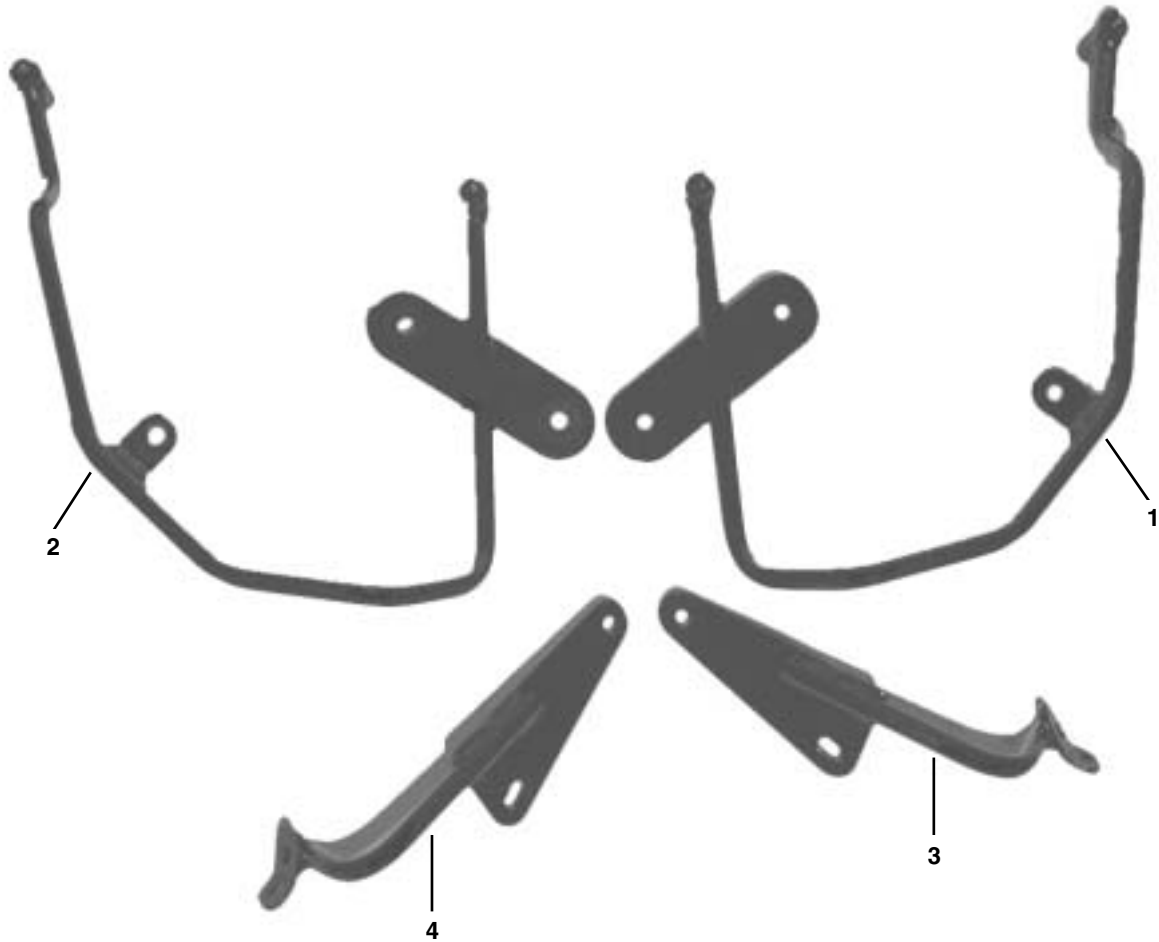
WARNING

Check for proper turn signal lamp operation before riding motorcycle. Visibility is a major concern for motorcyclists. Failure to have proper turn signal lamp operation could result in death or serious injury.

30. Check turn signals for proper operation.



103124.tif



Mounting Bracket Kit 90150-00

Item	Description	Part Number
1	Bracket, mounting right hand	90136-00
2	Bracket, mounting left hand	90137-00
3	Bracket, turn signal mounting right	90138-00
4	Bracket, turn signal mounting left	90139-00



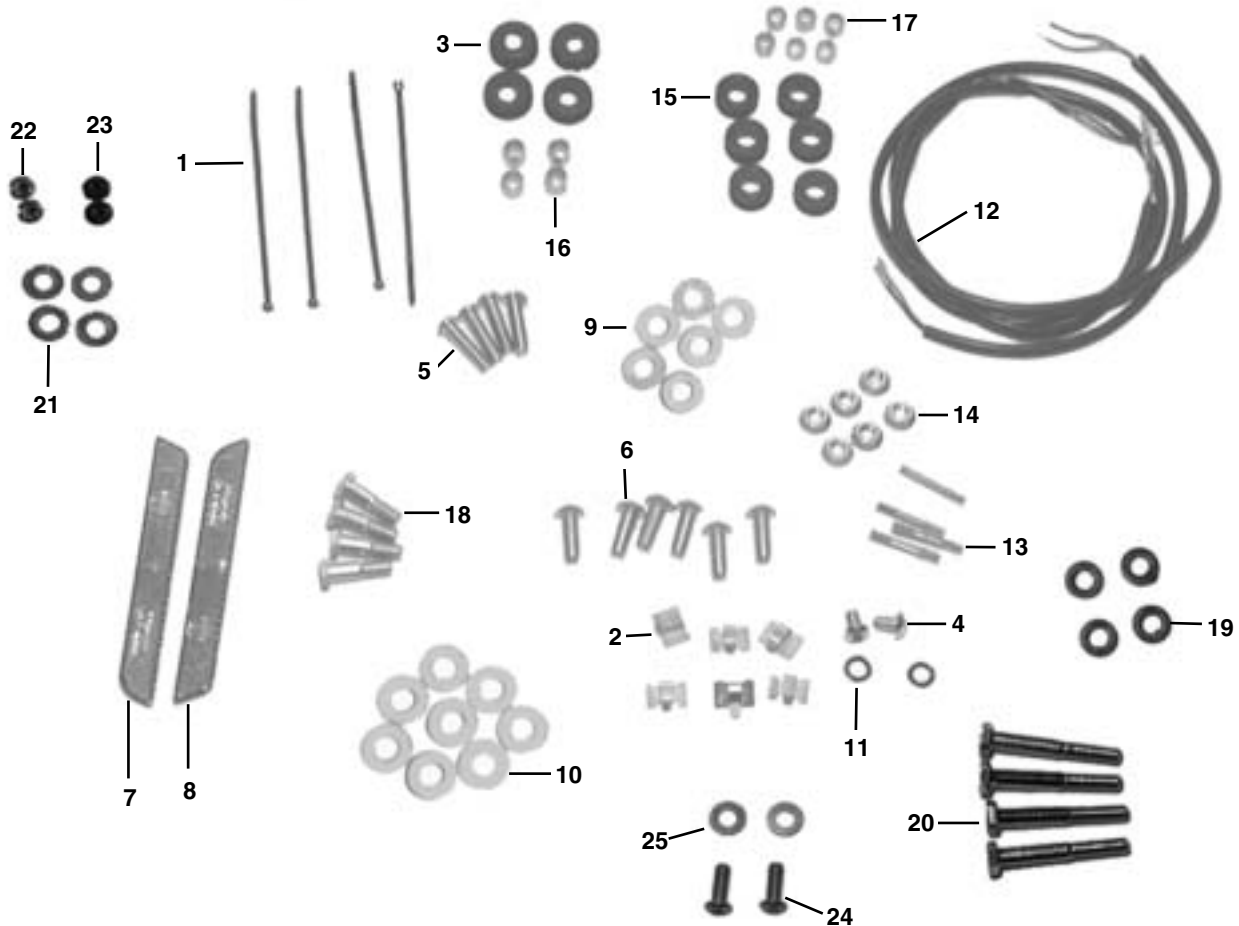
Service Parts

Part No. 90126-00

Date 11/00

Dyna Fiberglass Saddlebag Kit

i03125a.tif



Hardware Kit 90106-00A

Item	Description/Qty	Part Number	Item	Description/Qty	Part Number
1	Cable strap (4)	10065	14	Nut, flange locking (6)	7531
2	Clip, adhesive (6)	10102	15	Grommet (6)	90148-00
3	Grommet (4)	11447	16	Spacer (4)	90149-00
4	Screw hex socket button (2)	3538	17	Spacer (6)	90186-00
5	Screw, button socket head (4)	4098	18	Screw, hex head (4)	4164
6	Screw, hex socket button head (6)	4219	19	Spacer (4)	91414-00
7	Reflector, amber right hand	59289-92	20	Screw, hex head (4)	4218
8	Reflector, amber left hand	59290-92	21	Washer (4)	6701
9	Washer, plain (6)	6333	22	Hole plug cover, chrome (2)	56239-93
10	Washer, plain (8)	6416	23	Plug, black rubber (2)	53644-00
11	Lockwasher, hi collar (2)	7042	24	Screw, 5/16x18x1 (2)	4092
12	Harness, turn signal wire (2)	70550-00	25	Spacer, .150 inch (2)	65849-01
13	Connector, sealed butt (4)	70585-93	26	Loctite 243 (.5 ml) (not shown)	94635-98



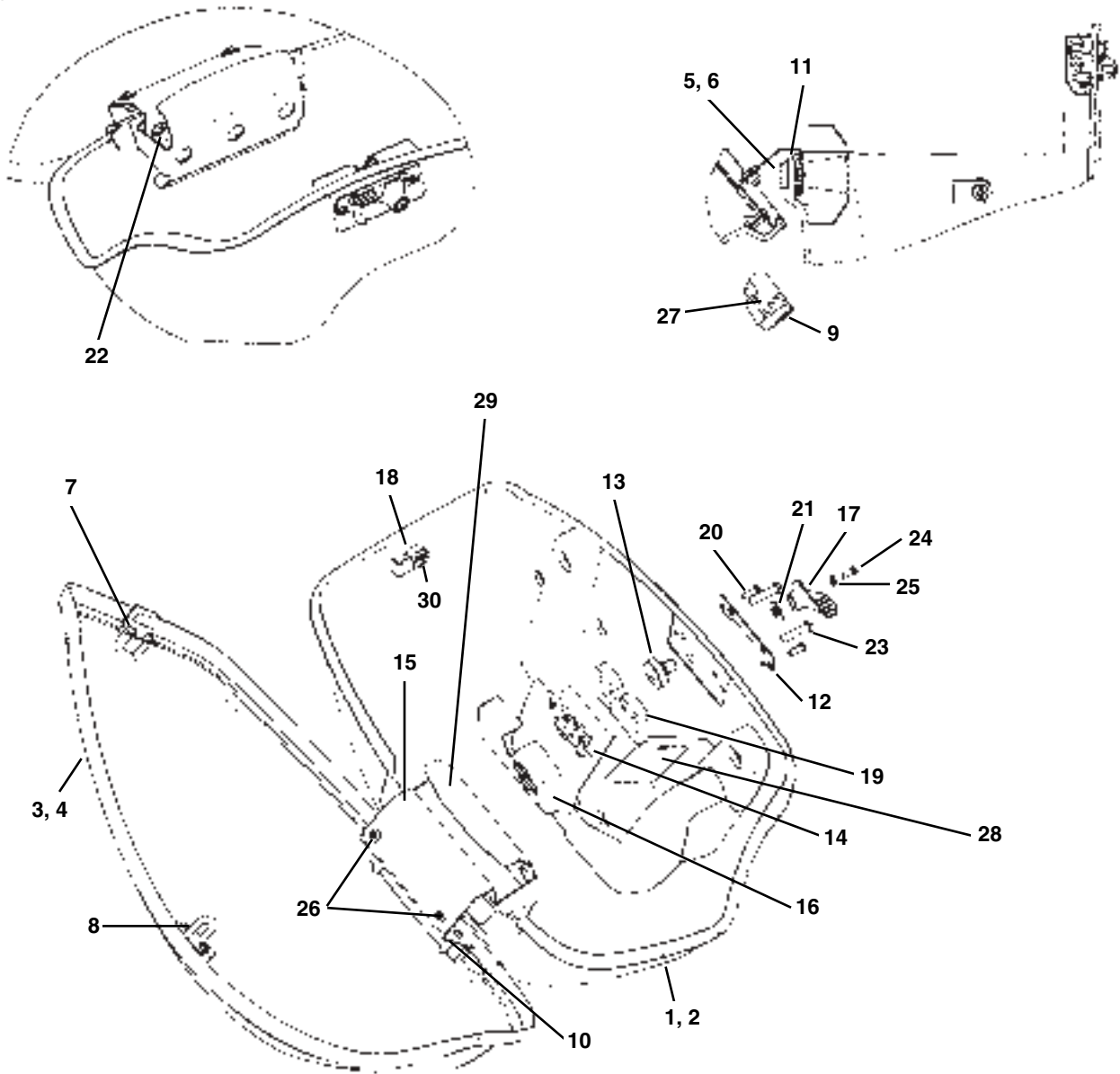
Service Parts

Part No. 90126-00

Date 11/00

Dyna Fiberglass Saddlebag Kit

i03126.tif



Saddlebag (Left) P/N 90147-00
Saddlebag (Right) P/N 90141-00

Saddlebag Assembly

Item	Description (Qty.)	Part No.	Item	Description (Qty.)	Part No.
1	Saddlebag bottom, right hand	90127-00	15	Hinge assembly	90151-00
2	Saddlebag bottom, left hand	90128-00	16	Cover, latch	91391-00
3	Saddlebag lid, right hand	90129-00	17	Lever, latch	91386-00
4	Saddlebag lid, left hand	90134-00	18	Lock assembly (1 of 2)	90168-00A
5	Reflector, red right hand	59287-92	19	Cam block	91389-00
	Reflector, amber right hand	59289-92	20	Screw, #10-16x1/2 self tap (9)	5233
6	Reflector, red left hand	59288-92	21	Washer, non metallic	91387-00
	Reflector, amber left hand	59290-92	22	Nut, keps #10-32 (3)	7629
7	Plate, cam lock	91393-00	23	Screw, M6-6Hx25 (2)	1396
8	Keeper, latch	91392-00	24	Screw, #8-32	4241
9	Medallion, H-D	90167-00	25	Washer, flat #8	6182W
10	Plate, lid hinge mount	90158-00	26	Screw, button head 1/4-20x1/2 (2)	936
11	Plate, base hinge mount	90188-00	27	Gasket	90174-00
12	Plate, latch backing	90159-00	28	Label saddlebag	90248-00
13	Cam, latch lever	91390-00	29	Plate, hinge cover	91375-00
14	Latch assembly	90166-00	30	Screw, 1/4-20x1/4	1397