

NORBLAST[®]

ABRASIVE BLASTING EQUIPMENT



by **NOREXCO[®]**



NORBLAST®

ABRASIVE BLASTING EQUIPMENT



NOREXCO® A LEADING MANUFACTURER
NORBLAST® ABRASIVE BLASTING MACHINES
NORBLAST® SELECTION CHARTS
NORBLAST® KITS AND ACCESSORIES

5
6
7
8



NORBLAST® OPERATING INSTRUCTIONS
NORBLAST® AIR AND ABRASIVE CONSUMPTION CHART
NORBLAST® SPARE PART DRAWINGS

9
9
10



NORBLAST® MANUAL ABRASIVE METERING VALVES
NORBLAST® REMOTE CONTROLS FOR ALL BLASTING MACHINES

11
12-13



NORBLAST® ABRASIVE BLASTING HOSE AND COUPLINGS
NORBLAST® ABRASIVE BLASTING NOZZLE HOLDERS

14
15



NORBLAST® VENTURI ALUMINIUM NOZZLES
NORBLAST® VENTURI SILICON NITRIDE NOZZLES
NORBLAST® PUSH-IN AND ANGLE NOZZLES

16
16
17



NORBLAST® BLASTING HELMETS
NORBLAST® VORTEX AIR CONDITIONING UNIT
NORBLAST® BLASTING SUITS
NORBLAST® AIR FILTER

18
19
19
20



NORFLEX® AIR HOSES AND VENTILATION DUCTING
NORBLAST® RECOVERY HOSE
NORBLAST® AIR OPERATED SHUT OFF VALVES
NORBLAST® ABRASIVE BLASTING ACCESSORIES

21
22
22
23



NORBLAST® PORTABLE DUST FREE BLASTING NOB6
NORBLAST® INTERNAL PIPE CLEANER NOB1 – NOB2
NORBLAST® INTERNAL PIPE CLEANER NOB3

23
24
25



NORBLAST® SOFT SYSTEMS
NORSAB® SOFTGOM BLASTING POWDERS
NORBLAST® MINIMAX
NORBLAST® SOFT 17 L SYSTEM
NORBLAST® SOFT 60 L SYSTEM

26
26
27
28
29



NORCOOL® AIR AFTERCOOLERS
AIRPLUS® COMPRESSORS

30
30



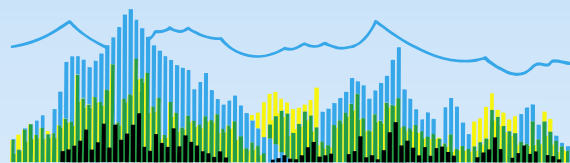
NORBLAST® ALLBLAST PRO+ WETBLASTING SYSTEM

31



NORBLAST® BULK BLASTING AND RECOVERY SYSTEMS

32



NOREXCO®



DENMARK - GERMANY - FRANCE - SPAIN

NOREXCO®
IN EUROPE



Welcome to the world of NOREXCO® ! With a solid experience and know-how of the blasting markets and techniques, NOREXCO® is one of the world-wide leaders in the manufacturing of Abrasive Blasting Equipment.

NORBLAST® Abrasive Blasting Machines are manufactured to the highest international standards and are used on production sites throughout the world for surface preparation. On shipyards, offshore platforms, metal industry, wood industry, building sites, ... NORBLAST® Abrasive Blasting Machines have been developed by NOREXCO® to withstand the toughest conditions and to fulfil the most demanding requirements.

All models are equipped with concave head for easy filling and reserve supply of abrasive, automatic pop-up valve, heavy gauge pressure vessel tested to the toughest international standards, conical bottom to ensure an easy flow of abrasives and inspection trap for access to the interior of the blasting chamber.

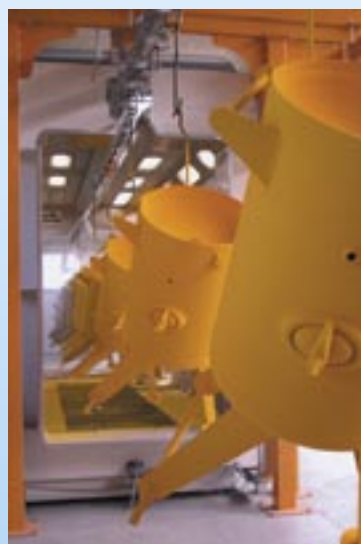
Through the manufacturing process, all components are clearly identified thanks to a state-of-the-art traceability system. All weldings are performed with automated robots and are thoroughly checked and documented. Hydraulic tests are performed on every tank for pressure control, in accordance with the latest CE regulations relative to pressure type equipment, therefore guarantying the highest possible level of performance and reliability.

Each NORBLAST® Abrasive Blasting Tank is then sandblasted and powder-coated, offering the best possible finish, the highest quality and the longest lifetime.

NORBLAST® Abrasive Blasting Equipment : the absolute choice for QUALITY, RELIABILITY AND SAFETY.

Technical specifications

Temperature range	:	-10° / +50° C
Working pressure	:	0 – 12 bar
Test Pressure	:	17,16 bar





NORBLAST® ABRASIVE BLASTING MACHINES

NORBLAST® Abrasive Blasting Machines can be mounted in a variety of versions, with various kits and accessories, in order to meet the exact requirements of the operator. Please refer to the NORBLAST® selection charts on the following pages in order to compose the NORBLAST® sandblasting system corresponding to your application.

MANUAL ABRASIVE BLASTING MACHINES



NOB17CE



NOB35CE



NOB60CE



NOB100CE



NOB200CE



NOB280CE



NOB300CE

All **NORBLAST® Abrasive Blasting Machines** are manufactured according to the CE regulations in application and are delivered with a CE test and conformity certificate.

Please note that the European Regulations impose the use of a remote control on all sandblasting units used within the European Union. Manual Sandblasting units can therefore only be used outside the E.U., in countries allowing the use of such equipment.

Further information can be obtained from your local dealer or nearest NOREXCO® Company.

REF.	DESCRIPTION	DIMENSIONS		WEIGHT	PIPE WORK
		Ø	HEIGHT		
NOB17CE	MANUAL Abrasive Blast Machine 17 ltrs Single chamber	260 mm	805 mm	32 kg	1 1/2"
NOB35CE	MANUAL Abrasive Blast Machine 35 ltrs Single chamber	320 mm	800 mm	48 kg	1 1/2"
NOB60CE	MANUAL Abrasive Blast Machine 60 ltrs Single chamber	365 mm	1140 mm	70 kg	1 1/4"
NOB100CE	MANUAL Abrasive Blast Machine 100 ltrs Single chamber	510 mm	1130 mm	96 kg	1 1/4"
NOB200CE	MANUAL Abrasive Blast Machine 200 ltrs Single chamber	610 mm	1445 mm	160 kg	1 1/4"
NOB280CE	MANUAL Abrasive Blast Machine 280 ltrs Single chamber	610 mm	1740 mm	168 kg	1 1/4"
NOB300CE	MANUAL Abrasive Blast Machine 300 ltrs Double chamber/1 outlet - Two outlets can be supplied on request	610 mm	1800 mm	190 kg	1 1/4"

Above references are for manual **NORBLAST®** Sandblasting machines.

ABRASIVE BLASTING MACHINES **NORBLAST®**



REMOTE CONTROLLED ABRASIVE BLASTING MACHINES



Each **NORBLAST® Abrasive Blasting Machine** can be mounted in several different versions in order to perfectly meet your needs and requirements. All NORBLAST® machines are suitable for connection to NORBLAST® pneumatic or electro-pneumatic remote control systems.

First, please refer to the **Sandblasting Unit selection chart** below in order to select the type of metering valve and the type of remote control which you wish to have mounted on your unit, choosing between a classic NOB2039 or a split NOB2040, either in pneumatic or electric version.















Then, select the hose kit and moisture separator kit which you need.

Finally, select the sandblasting nozzle you would like to use and the optional accessories : helmet kit, top cover, filter screen, Vortex air conditioning and separate air filter.

Your **NORBLAST® Abrasive Blasting Machine** will be mounted according to your choice and delivered to you ready to operate, in perfect accordance with your needs.

Please note that all NORBLAST® Abrasive Blasting Machines delivered within the European Union are delivered in standard with safety valves, per the E.U. regulations.

NORBLAST® Abrasive Blasting Machines are available on request as stationary units, as well as skid based units. Should you at any time have a specific requirement for a special, non standard blasting unit, please do not hesitate to contact NOREXCO®. We will be pleased to develop a unit per your specifications.

			METERING VALVES				
CAPACITY	REMOTE CONTROLS		NOB1003 	NOB1004 	NOB1005 	NOB1007 	NOB1530 
17l	NOB2039		NOB17CE-2	NOB17CE-1			
35l	NOB2039		NOB35CE-2	NOB35CE-1			
60l	NOB2039				NOB60CE-1	NOB60CE-2	NOB60CE-3
	NOB2040				NOB60CE-4	NOB60CE-5	NOB60CE-6
100l	NOB2039				NOB100CE-1	NOB100CE-2	NOB100CE-3
	NOB2040				NOB100CE-4	NOB100CE-5	NOB100CE-6
200l	NOB2039				NOB200CE-1	NOB200CE-2	NOB200CE-3
	NOB2040				NOB200CE-4	NOB200CE-5	NOB200CE-6
	NOB2039 electric				NOB200CE-7	NOB200CE-8	NOB200CE-9



MOISTURE SEPARATOR KITS TOP COVERS AND FILTER SCREENS



Moisture separator



Top cover
Filter screen

	Type of moisture separator kits	Top cover	Filter screen
	NQ1125	NQ1130	
17 L	NOB9879	NOB1020	NOB1021
60 L		NOB9881	NOB1024
100 L		NOB9881	NOB1026
200 L		NOB9881	NOB1028

NORFLEX® EXTRA SANDBLASTING HOSE KITS



Complete hose with remote control handle. Nozzle to be ordered separately.

	Sandblasting hose diameter	Remote control handle	10m	Length 20m	40m
17 L	13 mm - NS1013	Pneumatic	NOB9919		
35 L		Without	NOB9918		
60 L	25 mm - NS1025	Pneumatic	NOB9862	NOB9864	
100 L		Without	NOB9963	NOB9865	
200 L		Pneumatic	NOB9852	NOB9854	NOB9856
200 L	32 mm - NS1032	Without	NOB9853	NOB9855	NOB9857
		Electric	NOB9870	NOB9871	NOB9872

NORBLAST® SANDBLASTING NOZZLES



Choice of NORBLAST® blasting nozzles

17 L	All nozzles with 3/4" thread, serie NY	
35 L		
60 L	All nozzles with 50 mm thread, series AX, OX, SX, NX, UA	
100 L	All nozzles with 50 mm thread, series AX, OX, SX, NX, UA	
200 L	All nozzles with 50 mm thread, series AX, OX, SX, NX, UA	

NORBLAST® SANDBLASTING HELMET KITS



Choice of NORBLAST® blasting helmets

	Helmet type	Length 10 m	Length 20 m	Length 40 m
	NOB4500	NOB9831	NOB9832	NOB9833
	NOB4100	NOB9834	NOB9835	NOB9836

ADDITIONAL ACCESSORIES



Air filter



"Vortex" air conditioner

Filters	"Vortex" air conditioning
 NOB4201, NOB4202 NOB4204	 NOB4180



You have chosen NORBLAST®. We would like to congratulate you. Your NORBLAST® equipment will offer you reliability and performance for years to come. However, it is important that you read this service manual carefully in order to operate your equipment correctly.

INSTALLATION AND PREPARATION

Compressed air supply is the most critical part of any blasting operation. The results will be obtained in direct proportion to the volume and pressure passing through the blasting nozzle. To obtain the best results, use pressures of 6-7 bars / 90-105 psi for blasting of steel and 3-4 bars / 45-60 psi for blasting masonry structures. The volume of air is also of the utmost importance and is directly related to the size of nozzle used. The following Air Flow and Abrasive Consumption Chart can assist you in ensuring that the compressor to be used is of the correct size.

AIR AND ABRASIVE CONSUMPTION CHART

NOZZLE		NOZZLE PRESSURE BAR / PSI					
mm-inch		3.5/50	4.2/60	5.0/70	5.6/80	6.3/90	7.0/100
2.4 - 3/32	0.22/8.2	0.26/9.5	0.3/11	0.34/12	0.37/13.5	0.4/14.6	Required air m ³ min/cfm
	23	27	30	33	36	38	Required abrasive kg/hour
	2.5	2.5	2.5	3	3	3.5	Required h.p.
3.2 - 1/8	0.3/11	0.36/13	0.42/15	0.47/17	0.51/18.5	0.55/20	Required air m ³ min/cfm
	30	35	40	46	51	56	Required abrasive kg/hour
	2.5	3	3.5	4	4.5	5	Required h.p.
4.8 - 3/16	0.72/26	0.83/30	0.92/33	1.05/38	1.14/41	1.25/45	Required air m ³ min/cfm
	68	78	89	98	108	120	Required abrasive kg/hour
	6	7	8	9	10	10	Required h.p.
6.4-1/4	1.3/47	1.5/54	1.7/61	1.9/68	2.1/74	2.5/90	Required air m ³ min/cfm
	122	142	161	185	204	239	Required abrasive kg/hour
	10	12	14	15	16	18	Required h.p.
8.0-5/16	2.2/77	2.5/89	2.9/101	3.3/113	3.6/126	4.2/150	Required air m ³ min/cfm
	213	243	275	305	336	409	Required abrasive kg/hour
	18	20	22	25	28	30	Required h.p.
9.5-3/8	3.0/108	3.6/126	4.0/143	4.6/161	5.0/173	5.6/200	Required air m ³ min/cfm
	303	348	393	436	478	545	Required abrasive kg/hour
	24	28	32	36	39	44	Required h.p.
11.0-7/16	4.1/147	4.8/170	5.5/194	6.1/217	6.8/240	7.4/260	Required air m ³ min/cfm
	407	469	535	596	522	750	Required abrasive kg/hour
	33	38	44	49	54	57	Required h.p.
12.7-1/2	5.5/195	6.3/224	7.1/252	7.9/280	8.8/309	9.9/350	Required air m ³ min/cfm
	527	607	687	764	844	1000	Required abrasive kg/hour
	44	50	56	63	69	75	Required h.p.

Use this Chart as a guide - Individual performance may vary

It is always recommended to place your compressor as close as possible to the blasting machine. This will ensure minimum pressure loss. Also use large diameter air hose between the compressor and the blasting machine. When placing the compressor, make sure prevailing winds blow the dust away from the compressor.

OPERATION FOR NORBLAST® UNITS EQUIPPED WITH REMOTE CONTROL

1. Connect air hose to air inlet.
2. Connect blasting hose to blast hose inlet.
3. Connect the air hose of the blasting helmet to the lower valve on the remote control.
4. Close the upper valve on the remote control (depressurisation valve for the sandblasting unit).
5. Co□
6. Con□.
The blue hose must be connected to the nipple with the biggest inner orifice.
7. Fill the blasting tank with abrasive, using a NORBLAST® strainer to avoid impurities entering the blasting tank.
8. Star□.
Air will start flowing out of the orifice of the remote control handle.
If a □
continuous air leak during the whole job.
9. Put the nozzle in place on the nozzle holder, using an appropriate gasket.
10. Connect the blasting helmet to the supply hose by using the quick coupling. Put on the helmet and adjust the air flow with the valve lo□.
11. Press on the remote control handle. The air leak at the handle will stop and the blasting unit will pressurise.
Adjust t□
flow is correctly adjusted. Do not use more abrasives than absolutely necessary, as this will cause excessive dust, higher blasting costs and a premature wear of the nozzle.
12. To stop blasting, release the remote control handle. The blasting unit will automatically depressurise. It is also possible to depressurise the blasting unit while the blaster is blasting. To do so, open the upper valve located on the remote control of the blasting unit.

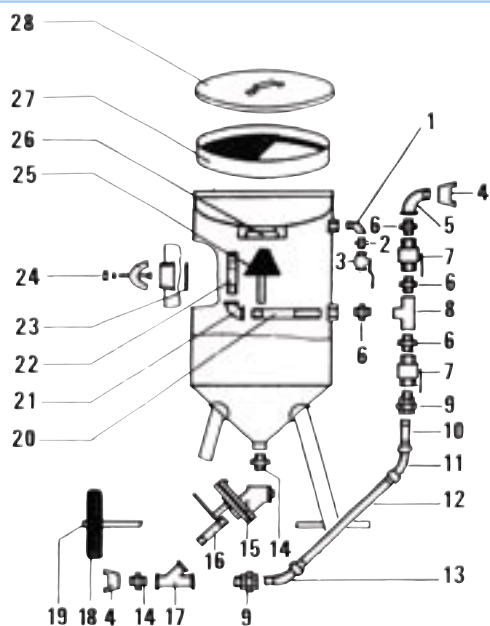


NORBLAST®

SPARE PART DRAWINGS

NORBLAST® CLASSIC NOB60 - 100 - 200 - 280

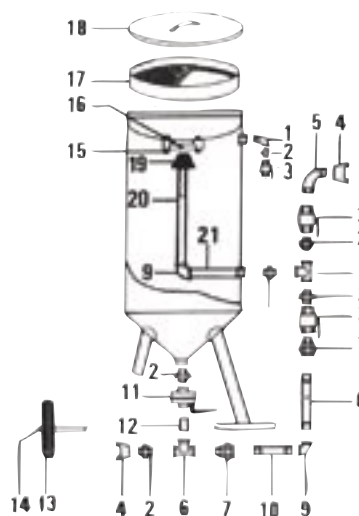
Fig. 1



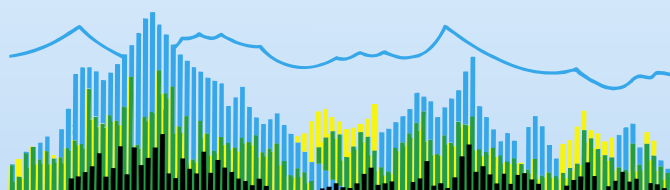
REP.	REF	DESCRIPTION
1	NOB1050	Elbow 1" MxF
2	NOB1051	Nipple 1" MxM
3	NOB1052	Air valve 1" FxF
4	OX1010	Quick coupler 1 1/4"
5	NOB1054	Elbow 1 1/4" MxF
6	NOB1055	Nipple 1 1/4"x1 1/4" MxM
7	NOB1056	Air valve 1 1/4" FxF
8	NOB1057	T-fitting 1 1/4"
9	NOB1058	Union 1 1/4" MxF
10	NOB1059	Tube 1 1/4" - 40 mm MxM for NOB 60-100
	NOB1062	Tube 1 1/4" - 200 mm MxM for NOB200-280
11	NOB1064	Elbow 1 1/4" FxF
12	NOB1065	Tube 1 1/4" - 250 mm MxM for NOB 60
	NOB1066	Tube 1 1/4" - 315 mm MxM for NOB100
	NOB1067	Tube 1 1/4" - 415 mm MxM for NOB200-280
13	NOB1068	Elbow 1 1/4" MxF
14	NOB1069	Nipple 1 1/4" MxM rubber
15	NOB1005	Abrasive metering valve 1 1/4"
16	NOB1070	Nipple 1 1/4" MxM rubber
17	NOB1071	Y-fitting 1 1/4" rubber
18	NOB1072	Wheel for NOB 60
	NOB1073	Wheel for NOB100
	NOB1074	Wheel for NOB200-280
19	NOB1075	Ring
20	NOB1076	Tube 1 1/4" - 140 mm MxM for NOB 60
	NOB1077	Tube 1 1/4" - 215 mm MxM for NOB100
	NOB1078	Tube 1 1/4" - 275 mm MxM for NOB200-280
21	NOB1079	Elbow 1 1/4" x 1" FxF
22	NOB1080	Nipple 1" - 150 mm for NOB60
	NOB1081	Nipple 1" - 230 mm for NOB100
	NOB1082	Nipple 1" - 230 mm for NOB200
	NOB1083	Nipple 1" - 430 mm for NOB280
23	NOB1084	Packing
24	NOB1085	Inspection trap complete
25	NOB1086	Pop-up valve
26	NOB1087	O-Ring
	NOB1088	Special O-Ring
27	NOB1025	Filter for NOB 60
	NOB1027	Filter for NOB100
	NOB1029	Filter for NOB200-280
28	NOB1024	Cover for NOB 60
	NOB1026	Cover for NOB100
	NOB1028	Cover for NOB200-280

NORBLAST® CLASSIC NOB17

Fig. 2



REP.	REF	DESCRIPTION
1	NOB1031	Elbow 1/2" MxF
2	NOB1032	Nipple 1/2" MxM
3	NOB1033	Air valve 1/2" FxF
4	NOB1034	Quick coupler 1/2"
5	NOB1035	Elbow 1/2" MxM
6	NOB1036	T-fitting 1/2"
7	NOB1037	Union
8	NOB1038	Tube 1/2" - 200 mm MxM for NOB17
9	NOB1040	Elbow 1/2" FxF
10	NOB1041	Tube 1/2" - 100 mm MxM for NOB17
11	NOB1003	Abrasive metering valve 1/2"
12	NOB1043	Tube 1/2" MxM
13	NOB1044	Wheel
14	NOB1045	Ring
15	NOB1046	Bolt
16	NOB1047	O-Ring for NOB25
	NOB1053	O-Ring for NOB17
17	NOB1021	Filter for NOB17
	NOB1023	Filter for NOB25
18	NOB1020	Cover for NOB17
	NOB1022	Cover for NOB25
19	NOB1048	Pop-up valve for NOB25
	NOB1049	Pop-up valve for NOB17
20	NOB1089	Tube 1/2" - 210 mm for NOB17
	NOB1090	Tube 1/2" - 210 mm for NOB25
21	NOB1091	Tube 1/2" - 90 mm for NOB17
	NOB1092	Tube 1/2" - 100 mm for NOB25



NOREXCO®

MANUAL ABRASIVE METERING VALVES NORBLAST®



NORBLAST® Manual Abrasive Metering Valves can be installed on any existing blasting systems, regardless of the brand. Mounting kits have been designed to facilitate the installation.



NOB1005

Metering valve 1"1/4.
General purpose for
NOB60-100 200-280-300



NOB1007

Metering valve
1"1/4
For reusable abrasive on all units except NOB17-35



NOB1530

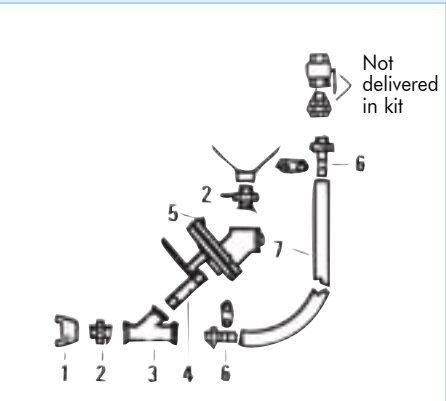
Air operated metering
valve 1"1/4



NOB1003

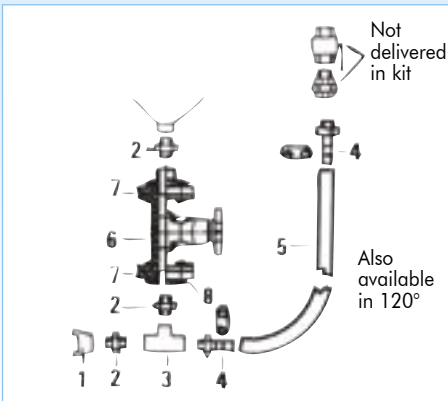
Metering valve 1/2"
General purpose
for NOB17-25-35

NORBLAST® COMPLETE MOUNTING KITS



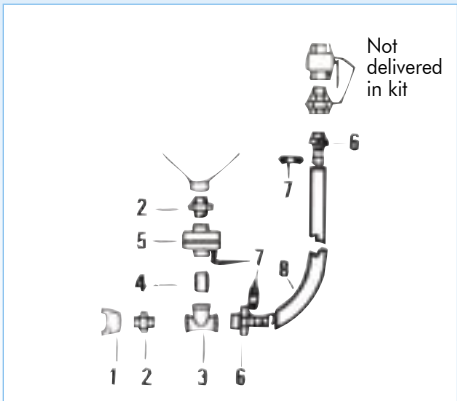
KIT NOB1105

REP.	QTY.	REF.	DESCRIPTION
1	1	OX1010	Quick coupler
2	2	NOB1069	Nipple 1"1/4 MxM rubber
3	1	NOB1071	Y-piece 1"1/4 rubber
4	1	NOB1070	Nipple 1"1/4 MxM rubber
5	1	NOB1005	Metering valve
6	2	NOB1494	Hose coupling 1"1/4M with clamp
7	1	NOB1094	Hose 1"1/4 - 1M



KIT NOB1106

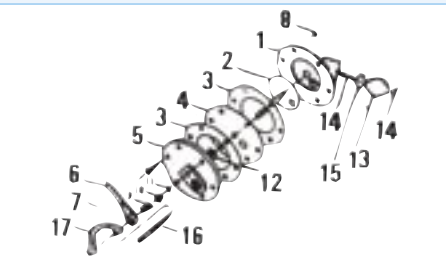
REP.	QTY.	REF.	DESCRIPTION
1	1	OX1010	Quick coupler
2	3	NOB1069	Nipple 1"1/4 MxM rubber
3	1	NOB1093	T-union 1"1/4 rubber
4	2	NOB1494	Hose coupling 1"1/4M w/clamp
5	1	NOB1094	Hose 1"1/4 - 1M
6	1	NOB1007	Metering valve
7	2	NOB1138	Flange 1"1/4
8	8	NOB1157	Bolts



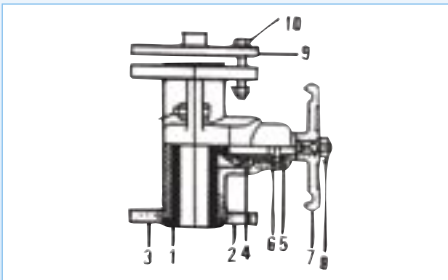
KIT NOB1108

REP.	QTY.	REF.	DESCRIPTION
1	1	NOB1034	Quick coupler 1/2"
2	2	NOB1032	Nipple 1/2" MxM
3	1	NOB1036	T-union 1/2"
4	1	NOB1043	Pipe 1/2" MxM
5	1	NOB1003	Metering valve 1/2"
6	2	NW9146	Hose coupling 1/2" M
7	2	NOB1096	Clamp
8	1	NOB1097	Hose 1/2" - 1M

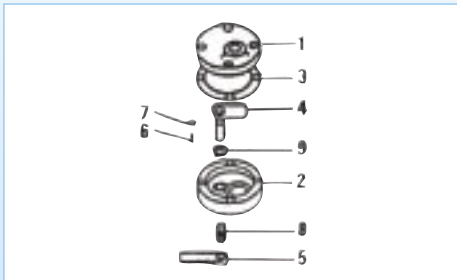
SPARE PARTS FOR NORBLAST® ABRASIVE METERING VALVES



REP.	REF.	DESCRIPTION
1	NOB1139	Upper body
2	NOB1140	Valve separation
3	NOB1141	Gasket
4	NOB1142	Disc
5	NOB1143	Lower body
6	NOB1144	Handle
7	NOB1145	Pin
8	NOB1146	Bolt
9	NOB1147	Spring
10	NOB1148	Gland
11	NOB1149	Packing
12	NOB1150	Gasket
13	NOB1151	Inspection plate
14	NOB1152	Nut/Bolt
15	NOB1153	O-Ring
16	NOB1154	Pin
17	NOB1155	Gauge



REP.	REF.	DESCRIPTION
1	NOB1129	Rubber liner yellow
	NOB1110	Rubber liner red
2	NOB1130	Housing
3	NOB1131	Housing
4	NOB1132	Reducer
5	NOB1133	Regulating screw
6	NOB1134	O-Ring
7	NOB1135	Knob
8	NOB1137	Nut
9	NOB1138	Flange 1"1/4
10	NOB1157	Bolt/nut
NOB1530 spares	NOB1103	Mounting kit for NOB1530
	NOB1138	Flange 1 1/4"
	NOB1228	Elbow 1/4" MxF
	NAB2695	Plug 1/4" M
	NOB1110	Rubber liner red
	NOB1129	Rubber liner yellow



REP.	REF.	DESCRIPTION
1	NOB1120	Top casting
2	NOB1121	Body
3	NOB1122	Gasket
4	NOB1123	Plate with stem
5	NOB1124	Handle
6	NOB1125	Pin
7	NOB1126	O-Ring
8	NOB1127	Spring
9	NOB1128	Washer



Safety regulations imposed in many countries throughout the world consider manual sand abrasive blasting as hazardous and impose blasting systems to be equipped with remote controls, giving the operator maximum safety.

NORBLAST® Remote Control Systems are all equipped with so called "deadman handles".

To start the blasting machine, the operator must press down the "deadman handle", thereby allowing the air inlet valve to open and the air outlet to close. This will enable to start blasting. Should the operator, at any time, want to stop blasting, he releases his hold on the handle, which immediately will close the air inlet valve and open the exhaust valve, thus depressurising the blasting machine. Should any incident occur to the operator and he releases his grip on the "deadman handle", the blasting machine will stop immediately, thus avoiding injuries.

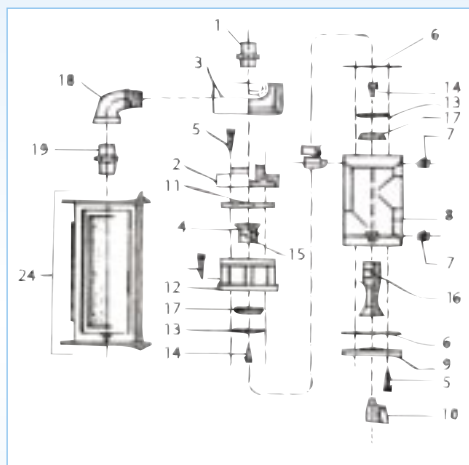
Two types of remote control systems are available :

Pneumatically operated remote control system. To be used when the length of the blasting hose does not exceed 40 meters, as otherwise the delay from releasing the "deadman handle" until the closing of the air valve will be too long.

Electrically operated remote control system. To be used when the length of the blasting hose exceeds 40 meters, or if the operator prefers the accuracy and speed of these systems. In certain fields, such as refineries or any area where explosive hazards exist, these systems cannot be used.

IMPORTANT : NORBLAST® Remote Control Systems can be installed on any existing blasting units, regardless of the brand.

NORBLAST® TRADITIONAL REMOTE CONTROL



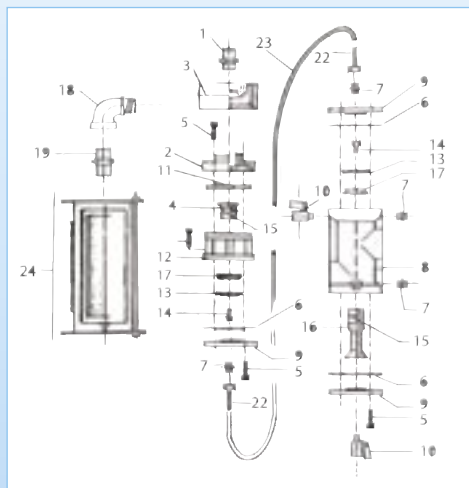
REPAIR KIT NOB2070

REP.	REF.	QTY	DESCRIPTION
6	NOB2049	2	Gasket
11	NOB2052	1	Diaphragm
13	NOB1054	2	Piston seal
15	NOB2056	3	O-Ring

REP.	REF.	DESCRIPTION
1	NOB2045	Nipple 3/4" MxM
2	NOB2046	Manifold
3	NOB2047	Top cover
4	NOB2048	Cylinder
5	NOB1222	Screw 8x25
6	NOB2049	Gasket
7	NM8010	Nipple 1/4" MxM
8	NOB2050	Valve housing
9	NOB2051	Bottom cover
10	NOB1231	Ball valve 1/4"
11	NOB2052	Diaphragm
12	NOB2053	Cylinder housing
13	NOB2054	Piston seal
14	NOB2055	Piston screw 8x15
15	NOB2056	O-Ring
16	NOB2057	Inlet valve
17	NOB2058	Piston
18	NOB2065	Union elbow 3/4" FxM
19	NOB2059	Nipple 3/4" MxM
22	NR6006	Coupling
23	TA1003	Air hose*
24	NOB2035	Silencer with couplings

* Length to be specified

NORBLAST® SPLIT REMOTE CONTROL



REPAIR KIT NOB2071

REP.	REF.	QTY	DESCRIPTION
6	NOB2049	2	Gasket
11	NOB2052	1	Diaphragm



NOB2000 Pneumatic remote control handle

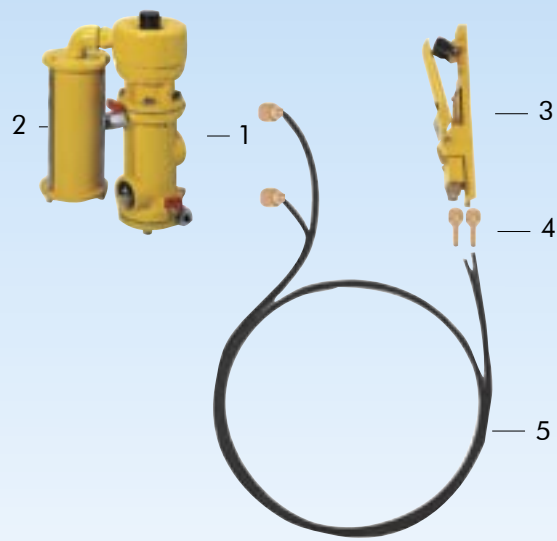


NOB2020 Electric remote control handle

REMOTE CONTROLS FOR ALL BLASTING MACHINES **NORBLAST®**

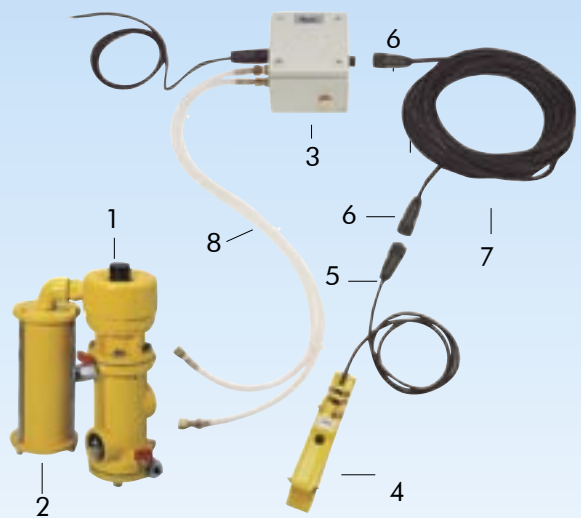


PNEUMATIC REMOTE CONTROL



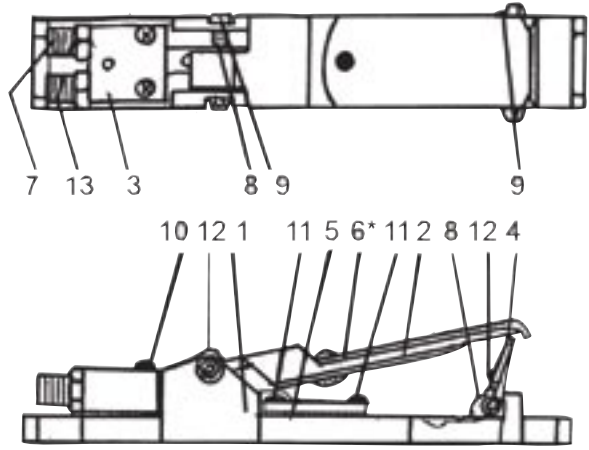
REP.	REF.	DESCRIPTION
1	NOB2030	Remote control
2	NOB2035	Silencer with couplings
3	NOB2000	Remote control handle pneumatic
4	NR6006	Couplings 1/4" F
5	TA1024	Twin air hose 1/4" - specify length

ELECTRIC 12/24V REMOTE CONTROL



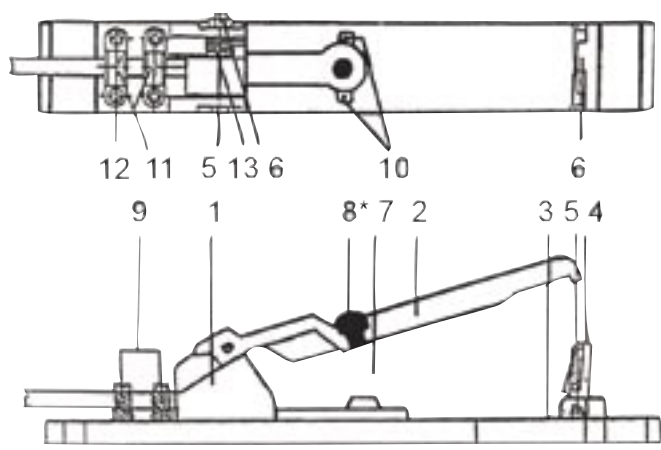
REP.	REF.	DESCRIPTION
1	NOB2030	Remote control
2	NOB2035	Silencer with couplings
3	NOB1275	Control box complete 12 V
	NOB1276	Control box complete 24 V
4	NOB2020	Remote control handle electric
5	NOB1262	Plug M
6	NOB1263	Plug F
7	NOB1264	Electric cable - specify length
8	NOB1265	Twin air hose - 1 m - Coupled 1/4" F

NOB2000



REP.	REF.	DESCRIPTION
-	NOB2000	Remote control handle pneumatic
1	NOB2001	Body
2	NOB2002	Lever
3	NOB2003	Manifold
4	NOB2004	Safety lock
5	NOB2005	Gasket
6	NOB2006	Rubber insert rounded side downwards
7	NM8039	Nipple 1/8x1/4 MxM
8	NOB2007	Spring
9	NOB2008	Screw 5x40
10	NOB2009	Screw 4x25
11	NOB2010	Screw 4x10
12	NOB2011	Lock nut
13	NM8040	Nipple 1/8x1/4 MxM 1.5 mm

NOB2020



REP.	REF.	DESCRIPTION
-	NOB2020	Remote control handle electric
1	NOB2001	Body
2	NOB2002	Lever
3	NOB2007	Spring
4	NOB2004	Safety lock
5	NOB2008	Screw 5x40
6	NOB2011	Lock nut
7	NOB2012	Micro switch with cable
8	NOB2006	Rubber insert rounded side upwards
9	NOB2014	Hinge
10	NOB2015	Pin 3-2
11	NOB2016	Clamp
12	NOB2010	Screw 4x10
13	NOB2017	Spring



NORBLAST® ABRASIVE BLASTING HOSE



REFERENCE	Ø INT. MM / INCH	Ø EXT. MM	WORKING PRESSURE BAR / PSI	MIN. BURST PRESSURE BAR / PSI	WEIGHT G / M
NS1013	13 / 1/2"	27	17 / 255	70 / 1050	400
NS1019	19 / 3/4"	32	16 / 240	65 / 975	650
NS1025	25 / 1"	39	14 / 210	55 / 825	800
NS1032	32 / 1 1/4"	48	13 / 195	50 / 750	1170
NS1038	38 / 1 1/2"	56	10 / 150	42 / 630	1300

It is recommended to use NORFLEX® Extra 1 1/4" – 32mm blasting hose on the following equipment : NOB100 – 200 – 280 – 300. On the NOB 60, use 1 1/4" – 32 mm or 1" – 25 mm hose.

On NORBLAST® NOB 17 units, use NORFLEX® Extra hose with an inside diameter of 3/4" – 19 mm. However 1/2" – 13 mm hose can also be used for smaller jobs where the hose does not exceed 10 to 15 meters.

Please refer to the blasting hose selection chart on page 8 to order the complete hose kit suited for your blasting machine.

Always place your blasting hose in a straight line. Sharp curves will create rapid and premature wear.

NORBLAST® ABRASIVE BLASTING HOSE COUPLINGS



REF.	HOSE Ø INT.	HOSE Ø EXT.	MATERIAL	DESCRIPTION
OX1005	-	-	Cast iron	Quick coupler 1" F
OX1010	-	-	Cast iron	Quick coupler 1 1/4" F
OX1011	-	-	Polyamide	Quick coupler 1 1/4" (for OX1014)
OX1006	13 mm - 1/2"	27 mm	Aluminium	Coupling for OX1005 - 1"M
OX1014	19 mm - 3/4"	32 mm	Polyamide	Quick coupler (for OX1011)
OX1015	25 mm - 1"	39 mm	Cast iron	Quick coupler
OX1016	32 mm - 1 1/4"	48 mm	Cast iron	Quick coupler
OX1017	38 mm - 1 1/2"	56 mm	Cast iron	Quick coupler
OX1020	-	-	Rubber	Gasket for OX1005
OX1021	-	-	Rubber	Gasket for OX1010 - 1015 - 1016 - 1017

Only externally fitted quick couplings should be used on blasting hose.

These couplings are all externally fitted and held in place with screws penetrating the wall of the hose. Make sure that the screws do not penetrate the hose completely or this could create air leaks.

All couplings have replaceable gaskets, ensuring complete air seal. Check every day for wear. Replace if needed.



NORBLAST® ABRASIVE BLASTING NOZZLE HOLDERS



OX1030



OX1034



OX1031



OX1042



OX1032



OX1043



OX1



OX2



OX3



OX4



OX5



OX6

REF.	Ø INT. HOSE	Ø EXT. HOSE	THREAD SIZE	MATERIAL
OX1030	13 mm - 1/2"	27 mm	3/4"	Aluminium
OX1034	19 mm - 3/4"	32 mm	3/4"	Aluminium
OX1031	25 mm - 1"	39 mm	1 1/4"	Aluminium
OX1042	25 mm - 1"	39 mm	50 mm coarse	Aluminium
OX1032	32 mm - 1 1/4"	48 mm	1 1/4"	Aluminium
OX1043	32 mm - 1 1/4"	48 mm	50 mm coarse	Aluminium
OX1	13 mm - 1/2"	27 mm	3/4"	Polyamide
OX2	13 mm - 1/2"	25 mm	28 mm coarse	Polyamide
OX3	19 mm - 3/4"	32 mm	50 mm coarse	Polyamide
OX4	25 mm - 1"	39 mm	50 mm coarse	Polyamide
OX5	32 mm - 1 1/4"	48 mm	50 mm coarse	Polyamide
OX6	38 mm - 1 1/2"	56 mm	50 mm coarse	Polyamide
OX1019	Gasket for nozzle holders OX1 - OX1030			
OX1022	Gasket for nozzle holders OX1031 - OX1042			
OX1023	Gasket for nozzle holders OX1032 - OX1043 - OX3 - OX4 - OX5 - OX6			
NOB1098	Screw for nozzle holder and hose coupling			

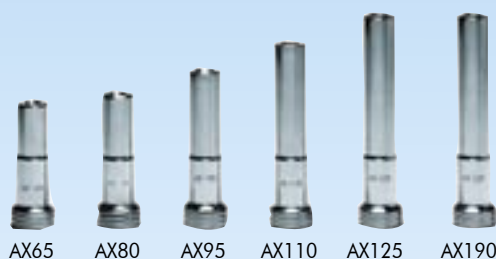
Always make sure that the hose is square cut to fit properly into the nozzle holder, and the same manner for the hose couplings.

These nozzle holders are all externally fitted and held in place with screws penetrating the wall of the hose. Make sure that the screws do not penetrate the hose completely or this could create air leaks.

All nozzle holders have replaceable gaskets, ensuring complete air seal. Check every day for wear. Replace if needed.



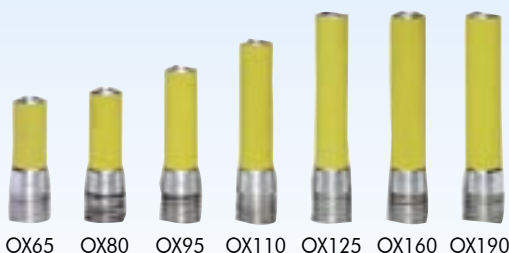
AX SERIE Long Venturi Tungsten Carbide Aluminium Nozzles



REF.	Ø INCH / MM	LENGTH MM	INLET DIAMETER INCH / MM	THREAD
AX 65	1/4" / 6.3 mm	135	1 1/4" / 32 mm	50 mm
AX 80	5/16" / 8.0 mm	145	1 1/4" / 32 mm	50 mm
AX 95	3/8" / 9.5 mm	170	1 1/4" / 32 mm	50 mm
AX110	7/16" / 11.0 mm	200	1 1/4" / 32 mm	50 mm
AX125	1/2" / 13.0 mm	230	1 1/4" / 32 mm	50 mm
AX190	3/4" / 19.0 mm	230	1 1/4" / 32 mm	50 mm

Can be supplied with 1" inlet Ø, flanges and 1 1/4" NPT thread upon request.

OX SERIE Long Venturi Tungsten Carbide Aluminium / Rubber Protected Nozzles



REF.	Ø INCH / MM	LENGTH MM	INLET DIAMETER INCH / MM	THREAD
OX65	1/4" / 6.3 mm	135	1 1/4" / 32 mm	50 mm
OX80	5/16" / 8.0 mm	145	1 1/4" / 32 mm	50 mm
OX95	3/8" / 9.5 mm	170	1 1/4" / 32 mm	50 mm
OX110	7/16" / 11.0 mm	200	1 1/4" / 32 mm	50 mm
OX125	1/2" / 13.0 mm	230	1 1/4" / 32 mm	50 mm
OX160	5/8" / 16.0 mm	230	1 1/4" / 32 mm	50 mm
OX190	3/4" / 19.0 mm	230	1 1/4" / 32 mm	50 mm

Can be supplied with 1" inlet Ø, flanges and 1 1/4" NPT thread upon request.

SX SERIE Long Silicon Nitride Nozzles Special Thermoplastic Jacket



REF.	Ø INCH / MM	LENGTH MM	INLET DIAMETER INCH / MM	THREAD
SX40	3/16" / 4.8 mm	117	1" / 25 mm	50 mm
SX60	1/4" / 6.3 mm	143	1" / 25 mm	50 mm
SX80	5/16" / 8.0 mm	152	1 1/4" / 32 mm	50 mm
SX95	3/8" / 9.5 mm	174	1 1/4" / 32 mm	50 mm
SX110	7/16" / 11.0 mm	203	1 1/4" / 32 mm	50 mm
SX125	1/2" / 12.5 mm	230	1 1/4" / 32 mm	50 mm

NX SERIE Short Venturi Tungsten Carbide Aluminium Nozzles



REF.	Ø INCH / MM	LENGTH MM	INLET DIAMETER INCH / MM	THREAD
NX40	3/16" / 4.8 mm	84	1" / 25 mm	50 mm
NX60	1/4" / 6.3 mm	84	1 1/4" / 32 mm	50 mm
NX80	5/16" / 8.0 mm	84	1 1/4" / 32 mm	50 mm
NX95	3/8" / 9.5 mm	84	1 1/4" / 32 mm	50 mm
NX110	7/16" / 11.0 mm	84	1 1/4" / 32 mm	50 mm
NX125	1/2" / 13.0 mm	84	1 1/4" / 32 mm	50 mm

Can be supplied with 1" inlet Ø, flanges and 1 1/4" NPT thread upon request.

NY SERIE Short Venturi Tungsten Carbide Aluminium Nozzles



REF.	Ø INCH / MM	LENGTH MM	INLET DIAMETER INCH / MM	THREAD
NY30	1/8" / 3.2 mm	45	1/2" / 13 mm	3/4" NPT
NY40	3/16" / 4.8 mm	45	1/2" / 13 mm	3/4" NPT
NY60	1/4" / 6.3 mm	45	1/2" / 13 mm	3/4" NPT
NY80	5/16" / 8.0 mm	45	1/2" / 13 mm	3/4" NPT
NY95	3/8" / 9.5 mm	45	1/2" / 13 mm	3/4" NPT
NY125	1/2" / 13.0 mm	45	1/2" / 13 mm	3/4" NPT

Can be supplied upon request with coarse thread.

ABRASIVE BLASTING NOZZLES **NORBLAST®**



UX SERIE Push-in Venturi Tungsten Carbide Aluminium Nozzles



REF.	Ø INCH / MM	LENGTH MM	INLET DIAMETER MM	HOSE Ø
UX8025	5/16" / 8.0 mm	115	20 mm	25 mm
UX9525	3/8" / 9.5 mm	115	20 mm	25 mm
UX8032	5/16" / 8.0 mm	115	24 mm	32 mm
UX9532	3/8" / 9.5 mm	115	24 mm	32 mm

UA SERIE Tungsten Carbide Angle Nozzles



REF.	Ø INCH / MM	LENGTH MM	INLET DIAMETER MM	THREAD
UA401	1x3/16" / 4.8 mm	80	20 mm	50 mm
UA403	3x3/16" / 4.8 mm	80	20 mm	50 mm
UA601	1x1/4" / 6.0 mm	80	20 mm	50 mm
UA603	3x1/4" / 6.0 mm	80	20 mm	50 mm
UA801	1x5/16" / 8.0 mm	80	20 mm	50 mm
UA803	3x5/16" / 8.0 mm	80	20 mm	50 mm
UA951	1x3/8" / 9.5 mm	80	20 mm	50 mm
UA953	3x3/8" / 9.5 mm	80	20 mm	50 mm

Can be supplied with 1 1/4" NPT thread upon request.
Other sizes can also be supplied.

It is the utmost importance to select the right nozzle for the right job. Make sure to consult the Air and Abrasive Consumption Chart on page 9, in order to ensure that sufficient air supply is available.

Use only Venturi nozzles, which are easily recognisable by their large inlet diameter tapered gradually into the orifice diameter and then flaring out at the outlet end.

The velocity of the abrasives at the outlet is normally in excess of 700 km / hour and has the highest concentration of impact of any type of nozzles. All NORBLAST® nozzles are of Venturi type.

Two factors are important when selecting a nozzle :

1. Orifice size : considering that sufficient air volume and pressure are available, one should always select the largest size nozzle possible. The following example will illustrate the importance of air pressure measured at the nozzle :

Nozzle blasting at 100 psi (7 bar) = 100 % of area
 Nozzle blasting at 80 psi (5.6 bar) = 66 % of area
 Nozzle blasting at 60 psi (4.2 bar) = 50 % of area

2. Length of nozzles : always use the longest size nozzle available to ensure the highest impact.

Short type nozzles (less than 90 mm) should only be used for smaller, easy to blast surfaces or in very confined areas in order to give more operator ease.

IMPORTANT : always consult the "Air and Abrasive Consumption Chart" on page 9.

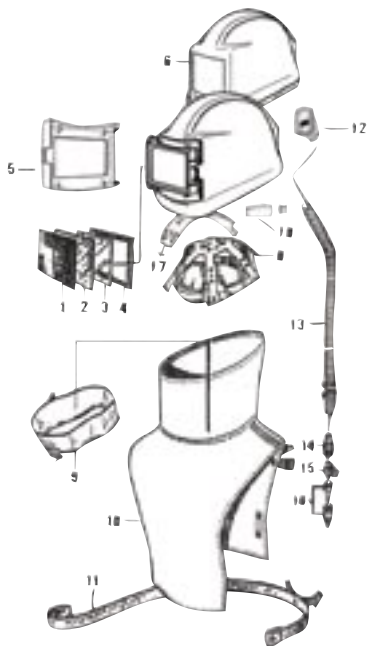
NORBLAST® = QUALITY AND SERVICE



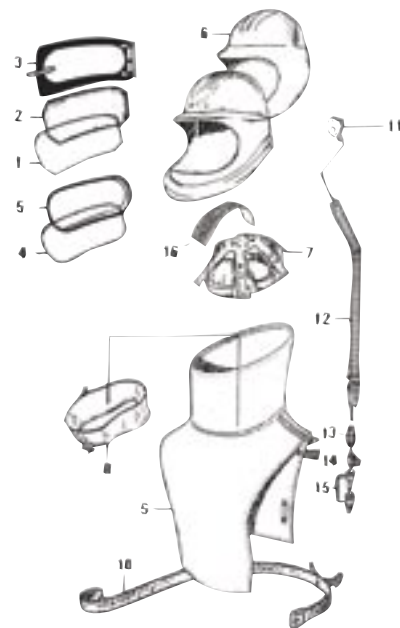
NOB4500



NOB4100



REP.	REF.	DESCRIPTION
	NOB4500	Helmet complete as illustrated
1	NOB4010	Wire mesh screen
2	NOB4011	Glass window
3	NOB4012	Polyester window
4	NOB4013	Window gasket
5	NOB4514	Window frame
6	NOB4515	Rubber helmet cover
8	NOB4017	Head band
9	NOB4018	Neck bib
10	NOB4019	Cape - black
11	NOB4020	Waist belt
12	NOB4521	Adapter
13	NOB4522	Hose with fittings
14	NOB4023	Silencer
15	NOB4024	Regulator
16	NOB4025	Quick coupler
17	NOB4538	Airflow indicator
18	NOB4541	Window clip (hook + hinge)



REP.	REF.	DESCRIPTION
	NOB4100	Helmet complete as illustrated
1	NOB4026	Acetate window
2	NOB4027	Wire mesh screen
3	NOB4028	Window frame
4	NOB4029	Polyester window
5	NOB4030	Window gasket
6	NOB4031	Rubber Helmet cover
7	NOB4017	Head-band
8	NOB4018	Neck bib
9	NOB4019	Cape - black
10	NOB4020	Waist-belt
11	NOB4021	Adapter
12	NOB4022	Hose with fittings
13	NOB4023	Silencer
14	NOB4024	Regulator
15	NOB4025	Quick coupler
16	NOB4038	Airflow indicator

"VORTEX" UNIT AND BLASTING SUITS NORBLAST®



"VORTEX" AIR CONDITIONING UNIT

The **NORBLAST® VORTEX** system converts a supply of compressed air into hot or cold streams. The proportion of hot or cold air temperature can be adjusted by a control valve and by the inlet air pressure.

The **NORBLAST® VORTEX** system is particularly suitable as personal air conditioning for blasting helmets and air hoods.

REF.	DESCRIPTION
NOB4180	NORBLAST® VORTEX air conditioning system complete including silencer, control valve and coupling.



OPERATING INSTRUCTIONS

When the air is cold

Connect the Vortex tube on the airhood (1).

Remove the silencer, control valve and coupling from the breathing air hose (2) and connect this hose with a hose clip (3) on the socket (9) at the hot outlet of the Vortex tube.

Maximum volume but minimal heating is obtained when the control valve (8) is closed.

Minimum volume but maximum heating is obtained when the control valve (8) is opened.

When the air is hot

Connect the Vortex tube on the airhood (1).

Interchange white cap (10) from the cold to the hot outlet.

ATTENTION : do not interchange the silencer (5) of the cold and hot outlet.

Turn the elbow (7) of the air inlet 180°.

Remove silencer, control valve and coupling (4) from the breathing hose (2) and connect this hose with a hose clip (3) to the hexagonal part of the Vortex tube control valve (8).

Cool air temperature : maximum volume but minimum cooling is developed when the control valve is closed. When the control valve is opened, cooler air is produced but at a reduced volume.

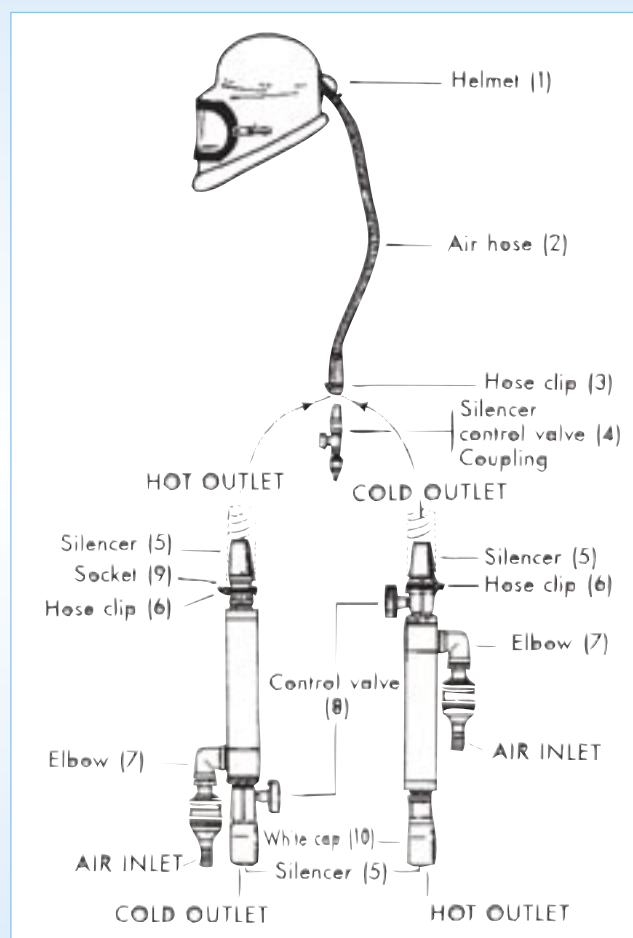
General

Increasing the inlet pressure increases the performance of the Vortex tube.

After making any control valve adjustments, allow at least one minute for the temperature change to occur, then re-adjust again if required.

Humid air may cause problems by freezing the silencer on the cold outlet.

An air filter type **NOB4200** should be installed at the air supply compressor, in order to remove objectionable odours, oil vapours, condensed moisture or any other matter. (Refer to page 20.)



NORBLAST® BLASTING SUITS

NOREXCO® offers a complete range of blasting suits from light weight reinforced cotton to more resistant and protective leather suits. Please select your size and fabric from the chart below.

TYPE OF FABRIC			
SIZE	Leather / Cotton	Nylon / Cotton	Reinforced Cotton
M	NOB7010	NOB7030	NOB7040
L	NOB7011	NOB7031	NOB7041
XL	NOB7012	NOB7032	NOB7042
XXL	NOB7013	NOB7033	NOB7043





NORBLAST® Airline Filters are designed to remove particle matter as well as oil, oil mist, odours and excess moisture from compressed air. By the utilisation of a multi-stage filtration process, the filters effectively trap and remove air impurities with little pressure drop. The special guard designed by NOREXCO® provides an efficient protection of the filter on all the different job sites.

Warning : the air filter does not remove carbon monoxide (CO) or other toxic vapours.

The multi-stage filtering process :

Compressor-supplied air enters through the 1" inlet port and starts the filtration process upward through multiple layers of filtering material. Once filtered, it exits into the adjoining air supply hose.

Stage 1 Vortex action of the incoming air in the outer cylinder removes particles, water and oil.

Stage 2 Oil, vapour and water are absorbed by activated alumina.

Stage 3 Odours are removed by activated charcoal.

Stage 4 Particles are removed by 100% polyester fibre.

Stage 5 Respiratory felt at final stage removes the last particles.

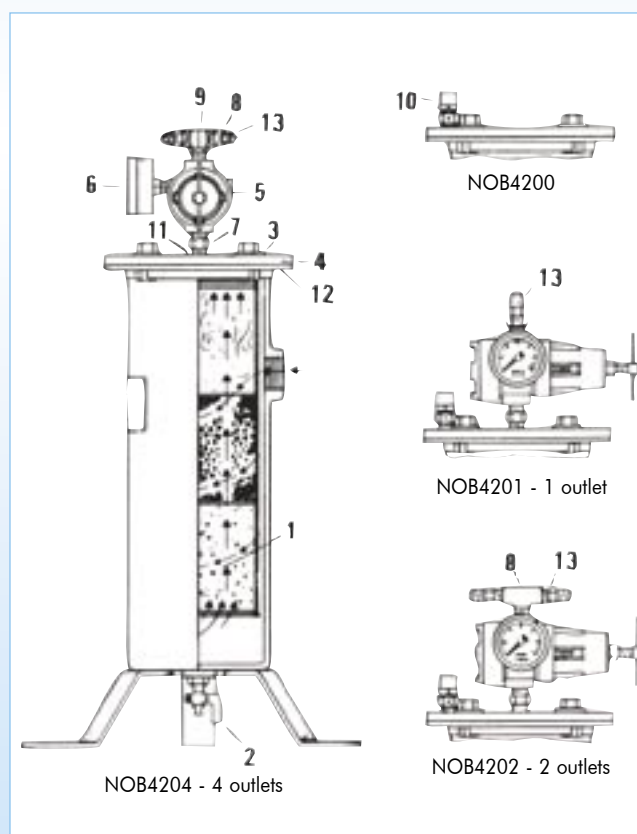
Filter cartridge replacement :

The filter cartridge should be inspected weekly or more often depending on usage and number of outlets, and replaced if the following signs are noticed :

- Contamination or visible discoloration of the filter cartridge (visible only when the filter is disassembled).
- The presence of moisture at the outlet fitting(s).
- After a period of three months of continued use (based on 40 hours per week).
- NOTE : filters with multiple outlets require more frequent changes.
- The outlet pressure falls below 80 psi – 5.5 bar.



REP. REF.	DESCRIPTION
NOB4200	This model is an in-line air filter with no pressure regulator or gauge. It delivers 100 CFM (2.83m ³ /min.) of air at the maximum recommended pressure of 100 PSI. An externally mounted regulator can be used with the filter.
NOB4201	Filter complete with 1 outlet - air regulator - gauge
NOB4202	Filter complete with 2 outlets - air regulator - gauge
NOB4204	Filter complete with 4 outlets - air regulator - gauge
1 NOB4210	Air filter cartridge
2 NOB1231	Air petcock 1/4" NPT
3 NOB4216	Manifold cover
4 NOB4217	Gasket
5 NQ1145	Air regulator all models 3/8"
6 NQ1025	Gauge
7 NM8012	Nipple 3/8" - 3/8" NPT MxM
8 NM8409	T 3/8" MxMxM
9 NM8407	Cross 3/8" NPSM MxFxFx
10 NAB2695	Plug 1/4" M
11 NG5113	Bushing 1" NPT M x 3/8" NPSM F
12 NOB4219	O-Ring
13 NM8043	Nipple 3/8" - 3/8" BSP M
14 NOB1232	Valve 3/8" FxF
TA1004	Air hose 3/8" for helmets - specify length
NR6009	Coupling 3/8" NPSM - for TA1004



SPECIFICATIONS	NOB4200	NOB4201 (1 outlet)	NOB4202 (2 outlets)	NOB4204 (4 outlets)
Air flow	100 CFM (2.83 m ³ /min)	0.15 CFM (0-0.42 m ³ /min)	0.30 CFM (0-0.85 m ³ /min)	0.60 CFM (0-1.70 m ³ /min)
Maximum pressure	100 PSI / 7 bar	100 PSI / 7 bar	100 PSI / 7 bar	100 PSI / 7 bar
Outlet connection	1" NPSM F	3/8" BSP M	3.8" BSP M	3/8" BSP M
Inlet connection	Claw coupling	Claw coupling	Claw coupling	Claw coupling
Tank diameter	140 mm	140 mm	140 mm	140 mm
Height with guard	760 mm	760 mm	760 mm	760 mm
Weight	11,3 kg	12 kg	12,1 kg	12,3 kg



NORFLEX® air hoses for the blasting industry are of high quality and meet all safety standards. NORFLEX® air hoses ensure a long-life under difficult working conditions.

NORFLEX® AIR HOSE FOR HELMETS AND AIR CONTROLS



PVC hose, reinforced and very flexible. Ideal for blasting helmets and air controls.

REF.	Ø MM/INCH	Ø EXT. MM	WORKING PRESSURE	PACKING
TA1003	6 / 1/4"	12	18 bar / 270 psi	50 m
TA1004	10 / 3/8"	16	15 bar / 225 psi	50 m



TA1024 - Rubber hose colour blue / red
TA1025 - Polyurethane hose colour blue / blue

NORFLEX® TWIN AIR HOSE FOR REMOTE CONTROLS

REF.	Ø MM/INCH	Ø EXT. MM	WORKING PRESSURE	PACKING
TA1024	6 / 1/4"	2x11.0	18 bar / 270 psi	40 m
TA1025	6 / 1/4"	2x9.5	20 bar / 300 psi	40 m

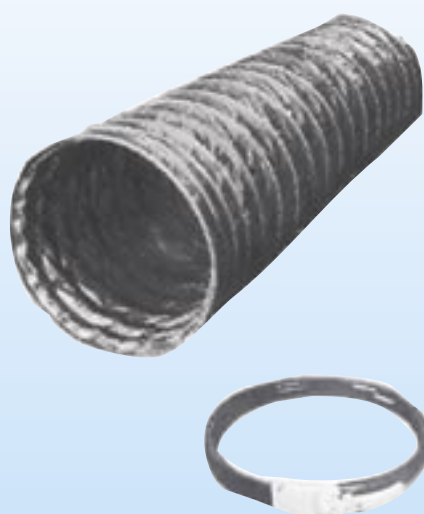
NORFLEX® HEAVY DUTY AIR HOSE



All purpose heavy duty air hose for paint spray and blasting equipment.

REF.	Ø MM/INCH	Ø EXT. MM	WORKING PRESSURE	PACKING
TA1007	10 / 3/8"	17	15 bar / 225 psi	40 m
TA1008	13 / 1/2"	21	15 bar / 225 psi	40 m
TA1009	19 / 3/4"	29	15 bar / 225 psi	40 m
TA1010	25 / 1"	36	15 bar / 225 psi	40 m
TA1011	32 / 1 1/4"	46	20 bar / 300 psi	40 m
TA1012	38 / 1 1/2"	52	20 bar / 300 psi	20 m
TA1013	51 / 2"	67	20 bar / 300 psi	20 m
TA1014	76 / 3"	96	20 bar / 300 psi	20 m
TA1015	102 / 4"	122	20 bar / 300 psi	20 m

NORFLEX® VENTILATION DUCTING



NORFLEX® ventilation ducting is a multi-function ducting in double faced heavy duty PVC. Plastic coated wire spirals welded inside all ducting ensure a maximum flexibility and a long-life. Transport is easy as ducting can be piled flat. Easily assembled with quick release joints. Suitable for all forced auxiliary ventilation, dehumidification and suction.

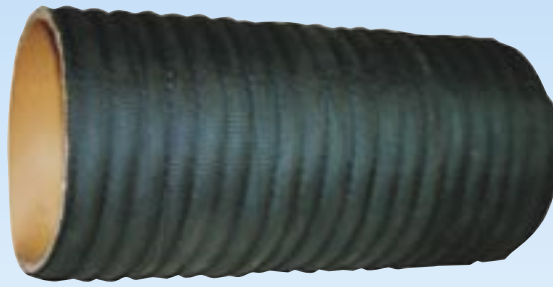
REF.	Ø EXT. MM	BEND RAD. MM	PRESSURE BAR	SUCTION BAR	WEIGHT KG/M
TA1030	150	105	0.64	0.05	1.100
TA1031	200	140	0.55	0.05	1.200
TA1032	250	175	0.45	0.03	1.350
TA1033	300	210	0.35	0.03	1.440
TA1034	400	280	0.25	0.03	2.050
TA1035	500	350	0.20	0.03	3.300
TA1040	Quick release joint for Ø 150				
TA1041	Quick release joint for Ø 200				
TA1042	Quick release joint for Ø 250				
TA1043	Quick release joint for Ø 300				
TA1044	Quick release joint for Ø 400				
TA1045	Quick release joint for Ø 500				
TA1058	Repair kit				

- Delivered in 5m, 7.5m and 10m length.
- Pitch of 150 mm (also available as an option with 75 mm pitch)
- Larger diameters upon request
- Specifications at 20° C.



NORBLAST® RECOVERY HOSE / AIR OPERATED SHUT OFF VALVES

NORFLEX® ABRASIVE RECOVERY HOSE



NORFLEX® Abrasive Recovery Hose is a flexible, light-weight hose, specially designed for clean-up systems and for fast abrasive removal and storage after blast cleaning operations. It is also suitable for handling other abrasive dry materials such as gravel, sand, cement and plastic pellets...

Manufactured with an inside tube in natural rubber, highly resistant to abrasion, and reinforced with high strength synthetic helix wires. Two copper wires ensure the discharge of static electricity. Outside cover in black corrugated rubber.

REF.	Ø INT. MM/INCH	WEIGHT KG/M	TEMPERATURE
NA1005	51 / 2"	1.65	— 40°C + 70°C
NA1006	76 / 3"	2.6	— 40°C + 70°C
NA1007	102 / 4"	3.6	— 40°C + 70°C
NA1008	127 / 5"	4.8	— 40°C + 70°C
NA1009	152 / 6"	6.9	— 40°C + 70°C

Other diameters upon request. Also available in ultra-light version.

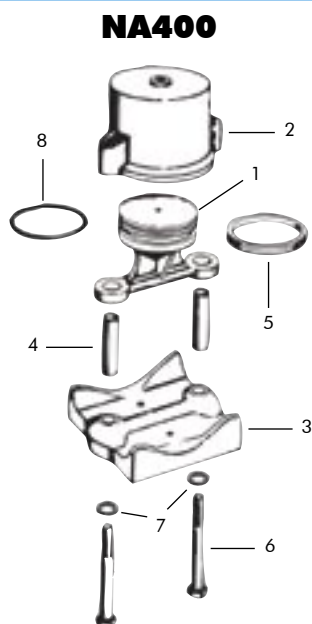
NORBLAST® PINCH VALVE



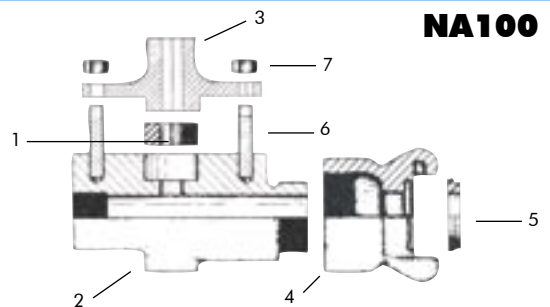
NORBLAST® Pinch Valve shuts air and abrasive supply by pinching abrasive blast hose.

NORBLAST® Pinch Valve are used extensively around the world on all Bulk Blasting units.

REP.	REF.	DESCRIPTION
	NA400	Valve complete
1	NA333	Piston
2	NA334	Housing
3	NA335	Base
4	NA336	Sleeve
5	NA337	Scraper
6	NA338	Bolt
7	NA339	Washer
8	NA340	O-Ring



NORBLAST® METERING VALVE



REP.	REF.	DESCRIPTION
	NA100	Metering valve complete
1	NA104	Washer
2	NA105	Metering valve base
3	NA106	Cover
4	NA107	Coupling
5	NA108	Washer
6	NA109	Stud 1/2"
7	NA110	Nut



CHECK VALVES



REF.	DESCRIPTION
NOB1402	Check valve 1/2"
NOB1401	Check valve 1 1/4"
NOB1400	Check valve 1 1/2"

WATER INJECTOR



REF.	DESCRIPTION
NOB1115	Water injector

SAFETY AIR RELIEF VALVES



All above safety air relief valves are delivered with lead seal, in accordance with European Safety Regulations.

REF.	DESCRIPTION
NOB1615	Air relief valve 1/4" – 8 bar
NOB1616	Air relief valve 1/4" – 10 bar
NOB1617	Air relief valve 3/8" – 10 bar
NOB1618	Air relief valve 3/8" – 12 bar
NOB1619	Air relief valve 1/2" – 10 bar
NOB1620	Air relief valve 1/2" – 12 bar
NOB1621	Air relief valve 1" – 10 bar
NOB1622	Air relief valve 1" – 12 bar
NOB1623	Air relief valve 1 1/4" – 10 bar
NOB1624	Air relief valve 1 1/4" – 12 bar
NOB1633	Air relief valve 3/8" – 8 bar

MOISTURE SEPARATORS



REF.	DESCRIPTION
NQ1125	Air filter 1/2"
NQ1227	Air filter 1"
NQ1130	Air filter 1 1/4"
NQ1129	Air filter 1 1/2"
NQ1140	Auto drain conversion kit

BLASTING LAMPS



REF.	DESCRIPTION
NOB4050	Blast light 20 W / 12 V complete
NOB4053	Blast light 20 W / 24 V complete
NOB4051	Light bulb 20 W for NOB4050
NOB4054	Light bulb 20 W for NOB4053
NOB4052	Antistatic lens
NOB1264	Electric cable 12 V - specify length
NOB1262	Electric plug 12 V male
NOB1263	Electric plug 12 V female

Fully insulated rubber housing and easy to mount directly on the nozzle holder. Halogen lamp 20 W - 12 Volt means safe operating. Antistatic plastic lens and lamp can be changed without tools. Delivered complete with 3 m cable, light-bulb and fixing clamp.

NORBLAST® 6

NORBLAST® 6 is a lightweight portable dustfree unit for vacuum blasting. With no moving parts, NORBLAST® 6 needs only compressed air and reusable abrasives, such as steel shot, grit, aluminium oxide, silicone carbides or glass beads.

NORBLAST® 6 will blast any surface and at the same time evacuate dust and grindings by means of vacuum suction. Abrasive materials will be recycled and reused.

NORBLAST® 6 will improve your working environment since the air will be free from abrasives and dust.

NORBLAST® 6 is a very handy tool under cramped conditions. The nozzle head is encased in a rubber cowl, which is applied at right angles to the surface. Specially designed end-fittings are available for angled surfaces, pipes, edges, welds, bolt heads, etc.

Flexible hose with dust collector and hood available.



TECHNICAL SPECIFICATIONS

Weight	3 kg + 2 kg abrasive
Air pressure	6-7 bar / 90-100 psi
Air consumption	1.5 m ³ min. / 50-60 cfm
Capacity	2-5 m ³ / hour - welding seams approx. 5 m per minute
Blast pattern	Approximately 1 1/4" - 32 mm wide
Action mode	360° swivel head, use at any angle

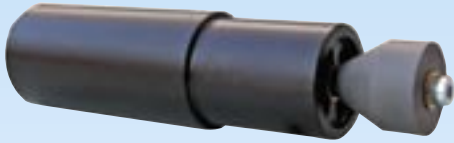
REF. DESCRIPTION

NOB6	NORBLAST® 6 complete delivered in plywood case. Supplied with various blast heads and dust bag, 5 m dust extension hose and nozzle in tungsten carbide.
-------------	---



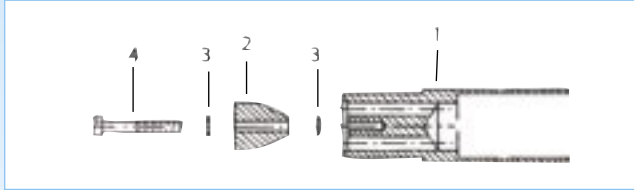
NORBLAST® INTERNAL PIPE CLEANERS NOB1/NOB2

NORBLAST® 1 - INTERNAL PIPE CLEANER 33 mm - 75 mm / 1 1/4" - 3"



The **NORBLAST® 1** is used for direct mounting on 1/2" hose. For use in pipes with inside diameters from 33 mm to 75 mm / 1 1/4" to 3".

Move the internal pipe cleaner by pulling the hose. A deflection tip divides the abrasive into a circular pattern hitting the surface at an angle of 45°. Ideal for very light duty occasional jobs.

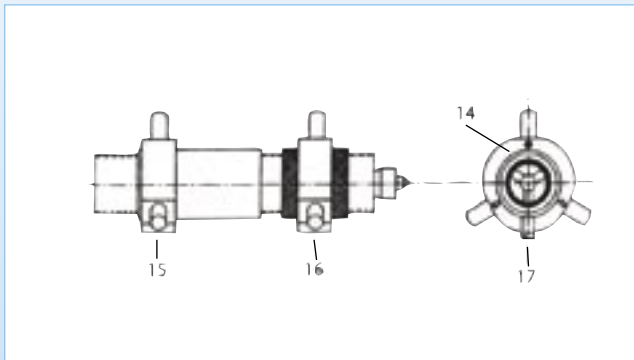
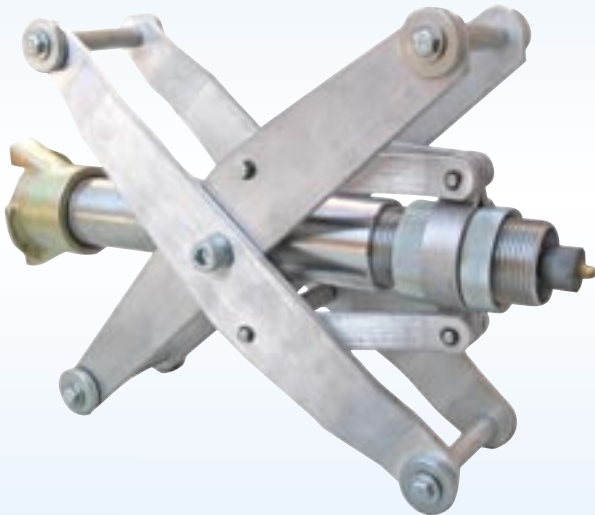


REP.	REF.	DESCRIPTION
-	NOB1	Internal pipe cleaner complete
1	NOB1434	Housing
2	NOB1442	Deflecting tungsten carbide tip
3	NOB1436	Washer
4	NOB1437	Bolt

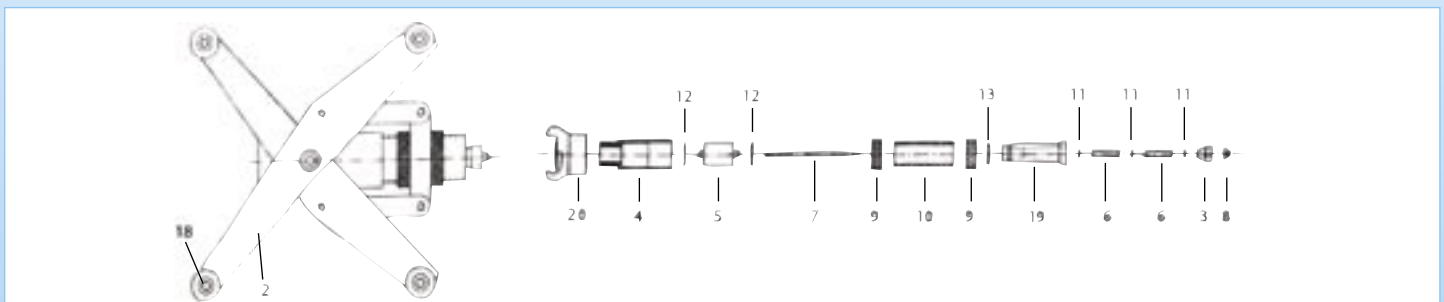
NORBLAST® 2 - INTERNAL PIPE CLEANER 75 mm - 300 mm / 3" - 12"

The **NORBLAST® 2** is used for internal pipe blasting on pipes varying from 75 mm to 300 mm / 3" to 12".

Move the internal pipe cleaner by pulling the hose. A deflection tip divides the abrasive into a circular pattern hitting the surface at an angle of 45°. Use 1 1/4" I.D. blast hose.



REP.	REF.	DESCRIPTION
-	NOB2	Internal pipe cleaner complete
1	NOB1440	Complete centering collar device
2	NOB1441	Centering carriage
3	NOB1442	Deflection tip tungsten carbide
4	NOB1443	Body
5	NOB1444	Support
6	NOB1445	Sleeve
7	NOB1446	Rod
8	NOB1447	Nut
9	NOB1448	Lock nut
10	NOB1449	Sleeve
11	NOB1450	Washer
12	NOB1451	Gasket
13	NOB1452	O-Ring
14	NOB1453	Bolt
15	NOB1454	Front collar
16	NOB1455	Rear collar
17	NOB1456	Bolt
18	NOB1457	Wheel
19	NOB1458	Nozzle 13 mm
19	NOB1459	Nozzle 16 mm
20	OX1010	Coupling





NORBLAST® 3 - INTERNAL PIPE CLEANER 200 mm - 900 mm / 8" - 36"



The **NORBLAST® 3** is used for internal pipe blasting on pipes varying from 200 mm to 900 mm / 8" to 36".

Two specially designed nozzles propel the unit's rotating head while blasting abrasive at high velocity into the pipe.

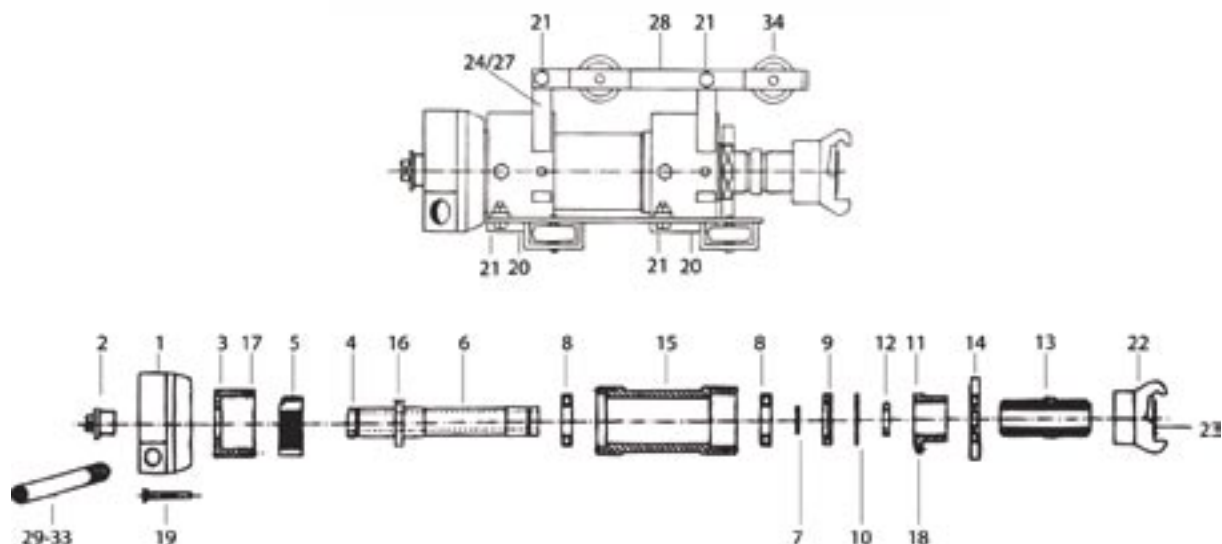
Since cleaning requirements vary, a range of different nozzles is available.

Use 1 ¼" abrasive blast hose.

Nozzles to be ordered separately.

REP.	REF.	DESCRIPTION
-	NOB3	Internal pipe cleaner complete without nozzle
1	NOB1465	Nozzle head
2	NOB1466	Plug
3	NOB1467	Housing
4	NOB1468	Pin
5	NOB1469	Brake
6	NOB1470	Tube
7	NOB1471	Ring
8	NOB1472	Bearing
9	NOB1473	Seal
10	NOB1474	Seal leather
10	NOB1475	Seal Teflon
11	NOB1476	Coupling
12	NOB1477	Washer TC
13	NOB1478	Nipple - rubber lined
14	NOB1479	Lock ring
15	NOB1480	Housing
16	NOB1481	Bolt

REP.	REF.	DESCRIPTION
17	NOB1482	Bolt
18	NOB1483	Bolt
19	NOB1484	Bolt
20	NOB1485	Carriage collar
21	NOB1486	Bolt
22	OX1010	Coupling
23	OX1021	Gasket
24	NOB1487	Leg 580 - 890 mm
25	NOB1488	Leg 380 - 580 mm
26	NOB1489	Leg 260 - 380 mm
27	NOB1490	Leg 210 - 260 mm
28	NOB1491	Arm with wheels
29	NY60	Nozzle 1/4" - 6 mm length 45 mm
30	NY80	Nozzle 5/16" - 8 mm length 45 mm
31	NY80/80	Nozzle 5/16" - 8 mm length 80 mm
32	NY95/100	Nozzle 3/8" - 9,5 mm length 100 mm
33	NY95	Nozzle 3/8" - 9,5 mm length 45 mm
34	NOB1492	Wheel
35	NOB1493	Centering carriage complete





NORBLAST®

SOFT SYSTEMS NORSAB® POWDERS

The **NORBLAST® SOFT systems** have been developed by NOREXCO® in order to respond to the ever increasing demand for soft blasting and cleaning, especially in urban environments.

This innovating concept enables to ecologically clean all types of surfaces, while fully respecting the integrity of the support. Dry soft blasting and wet blasting, depending on the models, offer an excellent solution to such problems as graffiti removal, cleaning of historical monuments, renovation of old buildings, renovation of old wood structures, cleaning of fragile surfaces, etc... The possibilities offered by the NORBLAST® SOFT systems are almost unlimited !

The **NORBLAST® SOFT systems** are available in several different versions, with capacities ranging from 17 to 100 L in order to perfectly meet the requirements of each job. Whether it is for small touch-up jobs or for larger scale cleaning, NOREXCO® has a NORBLAST® SOFT system for you.

Please consult the following pages for full details.

The **NORBLAST® SOFT systems** will offer their highest performances when used with soft blasting powders of the NORSAB® SOFTGOM range. Please refer to the following chart to select the powder for your application.



NORSAB® SOFTGOM BLASTING POWDERS

NORSAB® SOFTGOM is a new range of soft blasting powders developed specifically by NOREXCO® in order to guaranty an optimum result with the NORBLAST® 17 SOFT, NORBLAST® 60 SOFT and NORBLAST® MINIMAX.

The packaging in 20 kg buckets makes the NORSAB® SOFTGOM powders easy to use and protects them from humidity. Due to their extremely fine texture, the NORSAB® SOFTGOM powders should only be used with totally clean and dry air. The air delivered by the compressor should at least be processed through an air after cooler before supplying the soft blasting system.



REF.	DESCRIPTION
NORSAB® SOFTGOM 100	White, neutral product, environmental-friendly. Low level of abrasion.
NORSAB® SOFTGOM 200	Dark grey, neutral product, environmental-friendly. Moderate level of abrasion.
NORSAB® SOFTGOM 201	Light grey, neutral product, environmental-friendly. Higher level of abrasion.



Minimax NORBLAST®



NORBLAST® Minimax is a new generation of sandblasting systems specially designed for small maintenance jobs. Thanks to the reduced size and lightweight design, it offers fast and effective operation in virtually any condition.

NORBLAST® Minimax is fitted with a pressure regulator for working air pressure adjustment, in order to regulate the abrasive velocity at the nozzle output, resulting in more or less aggressiveness on the surface.

The finish is unbeatable, especially with the usage of media chosen in the **NORSAB® Softgom** range.

NORBLAST® Minimax must be used with an air compressor offering a delivery of at least 24m³/h. If the nozzle chosen is above 3mm, the compressor delivery will have to be higher. The quality of the air supplied to the unit is critical. Too much moisture in the compressed air will result in irregular abrasive flow or abrasive outlet clogging. Refer to the instruction manual for further information.

NORBLAST® Minimax is the ideal tool for occasional sandblasting jobs on any kind of surfaces.

Possibilities offered by this unit are extremely wide and everybody has been, is or will be in need of a **NORBLAST® Minimax**.

Key advantages of the NORBLAST® Minimax :
MULTI-FUNCTION / EFFICIENCY / SIMPLICITY / LIGHTWEIGHT



REFERENCE	DESCRIPTION
MX9	9 litres powder coated aluminium body fitted with air pressure regulator, remote control, moisture separator, abrasive metering valve, 3M complete working hose with gun and 3mm nozzle. The tank capacity and design allow a usage without any request of periodical test and certification.

TECHNICAL SPECIFICATIONS	
Capacity	9 l
Dimensions : Length	300 mm
Width	300 mm
Height	600 mm
Weight	12 kg



NORBLAST® 17 SOFT is a dry cleaning and soft blasting unit developed to ecologically clean all types of surfaces while fully respecting the integrity of the support. The use of the NORSAB® SOFTGOM 100 soft blasting powder, specially developed by NOREXCO®, will fully optimise the performances of the NORBLAST® 17 SOFT.

NORBLAST® 17 SOFT is the ideal system for cleaning a very wide range of surfaces such as natural stone, brick, concrete, wood, copper, bronze, aluminium, etc...

It is particularly recommended to eliminate graffiti and to remove old paints on almost all types of surfaces found on small and medium sized job sites.

NORBLAST® 17 SOFT can operate at pressures from 0.5 to 7 bars, according to the jobs and to the output delivered by the compressor. At low pressures, NORBLAST® 17 SOFT offers the possibility of performing very fine work, opening up a whole new world of possible applications.

NORBLAST® 17 SOFT IS THE BEST SOLUTION FOR CLEANING SMALL SURFACES WITHOUT DAMAGING THEM AND WITHOUT USING ANY CHEMICAL PRODUCTS.

Key advantages :

- Very fine work at low pressure
- Working hose of small diameter, therefore very flexible and easy to use
- Low air consumption
- Total respect of the surface by using the NORSAB® SOFTGOM 100 soft blasting powder.
- Very user-friendly. Very compact and lightweight unit.
- Functions with a compressor delivering 30 m³ / h for 3 bars of effective working pressure.
- Excellent result with the screw-type compressor AIRPLUS®APV55 (not included, available as an option).



TECHNICAL SPECIFICATIONS

Blasting unit :

Capacity	17 l
Dimensions :	
Length	500 mm
Width	700 mm
Height	800 mm
Weight	49 kg

Air after cooler :

Admissible delivery	1 200 l/ min - 72 m ³ /h
Delivery ventilator	500 m ³ /h
Diameter in / out	1" - 1/2
Dimensions :	
Length	650 mm
Width	250 mm
Height	700 mm
Weight	19 kg

REFERENCE

DESCRIPTION

NOB17SOFT

17 liter unit, equipped with an air pressure regulator, remote control, moisture separator, metering valve, 10 m work hose complete with a 3 mm nozzle.

Pneumatically operated air after cooler with moisture separator on the output, 3 m hose to connect to the blasting unit and 5 m hose to connect to the compressor.



NORBLAST® 60 SOFT is a cleaning and soft-blasting unit. It can blast wet and dry and is specially developed to ecologically clean all types of surfaces, while perfectly respecting the integrity of the support.

The combined use of an air aftercooler successfully limits the condensation and formation of humidity inside the tank, therefore enabling the use of extremely fine soft abrasive powders.

A range of special soft blasting abrasive powders has been developed by NOREXCO®. Please refer to the NORSAB® SOFTGOM range in order to optimise the performances of your NORBLAST® SOFT system.

NORBLAST® 60 SOFT is the ideal system for cleaning and decontaminating a very wide range of surfaces such as natural stone, brick, concrete, wood, tiles, copper, bronze, aluminium, stainless steel, etc...

It is particularly recommended to clean stone, brick or concrete facades, to remove varnishes on wood, to eliminate graffiti and to remove old paints on all types of surfaces found on medium sized job sites.

NORBLAST® 60 SOFT can operate at pressures from 0.5 to 7 bars, according to the jobs and to the output delivered by the compressor. The compressor (not included) to be used in conjunction with a **NORBLAST® 60 SOFT** should have a delivery of at least 130 m³ / hour (Type AIRPLUS® APV130), the ideal being at least 180 m³ / h.

TECHNICAL SPECIFICATIONS

Blasting unit :

Capacity	60 l
Dimensions :	
Length	700 mm
Width	700 mm
Height	1140 mm
Weight	75 kg

Air after cooler :

Admissible delivery	3 000 l / min - 180 m ³ /h
Delivery ventilator	2980 m ³ /h
Diameter in / out	1" - 1/2"
Dimensions :	
Length	750 mm
Width	220 mm
Height	780 mm
Weight	30 kg

At low pressures, **NORBLAST® 60 SOFT** offers the possibility of performing very fine work, opening up a whole new world of possible applications.

NORBLAST® 60 SOFT IS THE BEST SOLUTION FOR CLEANING SURFACES WITHOUT DAMAGING THEM AND WITHOUT USING ANY CHEMICAL PRODUCTS.

Key advantages :

- Soft Blasting dry or wet
- Simple connection to a standard water supply for wet blasting
- Low water consumption (15 l / h)
- Very simple start-up and operating
- Possibility of very fine work at low pressure
- System including an air aftercooler, enabling the use of very fine soft blasting powders, while limiting the risks of condensation in the tank.
- Total respect of the surfaces with use of soft blasting powders selected in the NORSAB® SOFTGOM range
- Very compact and lightweight unit
- Possibility of working with an AIRPLUS® APV130 compressor, delivering 130 m³/h for 3 bars of effective working pressure.
- Environment-friendly.



REFERENCE

DESCRIPTION

NOB60SOFT

60 liter unit, equipped with an air pressure regulator, remote control, moisture separator, metering valve, 20 m work hose complete with a 6mm special water induction nozzle and water supply hose. Pneumatically operated air after cooler with moisture separator on the output, 5 m hose to connect to the blasting unit and 10 m hose to connect to the compressor.



NORCOOL® AIR COOLED AFTERCOOLERS

The compressed air discharged by a compressor contains a considerable quantity of water vapour. If not removed, much of it will condense in the distribution system, sandblasting tank or air operated equipment.

The NORCOOL® aftercoolers are specially designed to eliminate a significant proportion of the water contained in the compressed air.

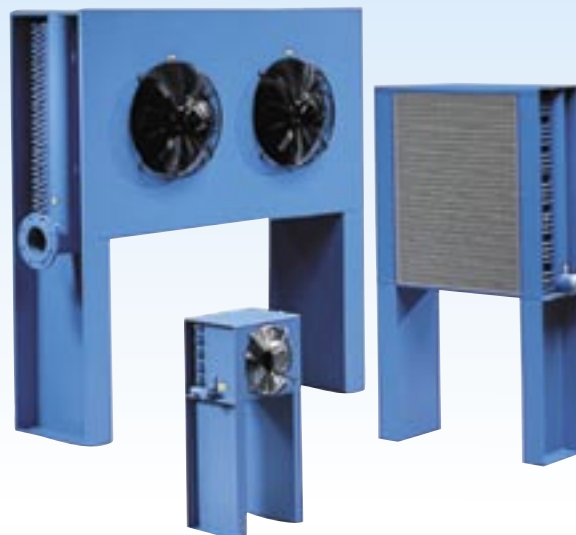
Compressed air flows through the tubes of the heat exchanger in counter-flow of the ambient air stream blown across by the fan. As the compressed air cools, a part of the water vapour condenses.

The condensed water is precipitated out of the aftercooler in the moisture separator where it is discharged from the system.

Electric or pneumatic driven fans are available on each model.

REFERENCE	CAPACITY		WEIGHT	
	m ³ /H	L/mn	CFM	kg
NC100E - NC100P	216	3.600	100	26
NC160E - NC160P	324	5.400	160	39
NC250E - NC250P	510	8.500	250	40
NC360E - NC360P	720	12.000	360	86
NC560E - NC560P	960	16.000	560	88
NC700E - NC700P	1.200	20.000	700	90
NC750E - NC750P	1.500	25.000	750	135
NC1000E	1.800	30.000	1.000	135
NC1600E	2.700	45.000	1.600	135
NC1750E	3.000	50.000	1.750	140
NC2100E	3.600	60.000	2.100	155
NC2800E	4.800	80.000	2.800	165

E=Electric P=Pneumatic / **MAXIMUM WORKING PRESSURE : 16 BARS**



AIRPLUS® COMPRESSORS

AIRPLUS® APV55 and APV130 are job-site compressors using lubricated screws and a gasoline engine. They offer an incomparable lifetime and a very high level of efficiency compared to the piston-type compressors that are generally used for applications requiring compressors with low or medium deliveries.

AIRPLUS® APV55 and APV130 are perfectly suited for the air supply of all the texture coating equipment of the NORTEX® range, as well as the soft blasting systems of the NORBLAST® SOFT range. The gasoline engine offers full autonomy on all types of job sites.

AIRPLUS® APV55 and APV130 also offer the following key advantages : mounting on base frame with over-sized wheels, handling frame and safety guards to fully protect all the sensitive parts of the compressor, high quality components.

AIRPLUS® APV55 and APV130 are the best choice for building companies looking for mobile compressors, easy to move around and designed to meet their exact requirements.

SPECIFICATIONS	APV55	APV130
True delivery	55 m ³ /h	130 m ³ /h
Regulation	6 / 8 bars pneumatic	6 / 8 bars electric
Back-up tank	5 l	20 l
Gasoline Engine	11 HP HONDA 4-stroke	24 HP HONDA 4-stroke
Consumption	2.5 l/h	6.5 l/h
Electric start-up	yes	yes
Key-type start-up	yes	yes
Start-up battery	yes	yes
Charge alternator	yes	yes
Safety check for lack of oil	yes	yes
Dimensions :		
Length	1000 mm	1000 mm
Width	600 mm	650 mm
Height	700 mm	800 mm
Weight	110 kg	160 kg





The new **ALLBLAST® PRO+** developed by NOREXCO® replaces the old ALLBLAST® range. Based on a solid know-how in the abrasive blasting market, as well as its experience acquired with the first generation of ALLBLAST® since 1995, NOREXCO® has improved and further developed the concept in an astonishing way.

Highly efficient, the ALLBLAST® PRO+ considerably reduces the amount of dust generated during blasting.

Very simple to operate and to adjust, the ALLBLAST® PRO+ is extremely reliable and will with no doubt enable you to successfully accomplish all your blasting jobs.

All types of non soluble abrasives and aggregates can be used, with a wide range of granulate rates. Weather conditions are not an issue : work can be done even in rainy conditions and operating is possible down to 0°C.

Entirely pneumatic, therefore requiring no electrical power supply, the ALLBLAST® PRO+ can be used on a wide variety of jobs, including very sensitive jobs such as refineries, petroleum storage tanks, offshore dwelling platforms, historical monuments, etc...

Offering an improved adjustment and far more possibilities than the older generation, together with an extreme simplification of the handling functions, the ALLBLAST® PRO+ is the on-site solution for the most demanding companies.



Key advantages :

- Fine dusts are reduced by more than 95%.
- Water and abrasive mixed inside the tank.
- Reduced consumption of abrasive.
- Highly reduced water consumption and possibility of adjustment.
- Reduced operating and maintenance.
- Silent system, with a reduced sound level.
- Reduced maintenance.
- Entirely pneumatic system; no electrical supply needed.
- Easy disassembly of metering valve and quick access to lower outlet.
- Blasting pot entirely galvanised, inside and outside, then powder-coated.

REFERENCE DESCRIPTION

NABN100CE

100 liter unit complete, equipped with top cover, filter screen, two air hoses Ø 19mm with couplings, valve and coupling for water supply, air filter, control box, overflow purge valve, pressure relief system, metering valve and piloting switch, 20 m work hose complete Ø 25mm with control hose and connecting plug, nozzle SX95, nozzle holder, visor with ear and eye protection.

TECHNICAL SPECIFICATIONS

Capacity	100 l
Dimensions : Length	1100 mm
Width	850 mm
Height	1300 mm
Weight	158 kg

ASK YOUR DEALER FOR THE COMPLETE SEPARATE ALLBLAST® PRO+ DOCUMENTATION.



NORBLAST®

BULK BLASTING AND RECOVERY

NORBLAST® BULK BLASTING SYSTEMS

NOREXCO® is one of the world leaders in bulk blasting. Mobile trailer-mounted or stationary units from 4-46 tons, either single or double chambers, and with 2-8 operators, permit large-scale blasting on big work sites such as shipyards, the petrochemical industry, oil industry and any building site which requires a high production rate.

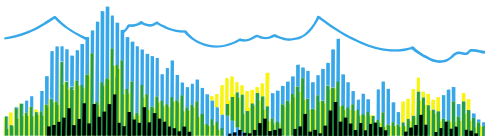
Operation costs can be considerably reduced and the abrasive materials handled in bulk, eliminating numerous shut down periods, thus increasing the production rate.

NORBLAST® bulk blast systems can be designed to suit your requirements.

NORBLAST® VACUUM RECOVERY SYSTEMS

NOREXCO® manufactures a wide range of recovery systems with capacities from 4-12 tons/hour and with efficiency up to 28" of mercury. In conjunction with specially designed collection tanks, even the toughest job site becomes accessible with ease. All types of spent abrasives can be handled as well as any type of transfer of abrasives from one point to another. All systems are designed to remove large quantities from even the deepest tanks into collection tanks, always keeping the job site clean.

ASK NOREXCO® FOR FURTHER DETAILS



NOREXCO®

NOREXCO S.A.

16, rue des Chasseurs Z.I. Internationale
74100 VILLE-LA-GRAND - FRANCE

Tel. +33 450 38 37 36 - Fax +33 450 92 88 44

www.norexco.com - e-mail : norexco.france@norexco.com

YOUR DEALER :

TECHNICAL INFORMATION SUBJECT TO CHANGE WITHOUT NOTICE - COPYRIGHT REPRODUCTION PROHIBITED