

2013 Product Catalog



THE PAPER CUT RESOURCE CENTER FOR THE DEALER CHANNEL

ACDI**ProServices**[®]

 **Convergent Solutions**

ACDI is a Certified PaperCut Authorized Solution Center servicing all of North and South America.

ACDI offers world-class customer service and dynamic technical support for print, scan, fax, and copy management applications. We are a well organized team with over 18 years of experience in designing, manufacturing, and supporting hundreds of dealer partners. We're considered the market resource, and undeniable leader with a broad range of experience in management solutions and cost recovery.

As a Certified PaperCut Authorized Solution Center, ACDI provides:

- Free Consulting: configuration strategy
- Remote and on-site web demonstrations
- Remote and on-site installation assistance
- Professional Services: training, application icon branding
- Dealer program with personalized assistance
- NFR License with remote assistance and training for your IT staff
- Manufacturer of hardware devices for cost recovery
- Convergent Solutions: software and hardware bundle discounts
- PaperCut application technical support
- ACDI dealer program includes same online PaperCut discount on all orders
(Software/Hardware/Pro Services)



PaperCutMF™
A U T H O R I Z E D
A U T H O R I Z E D S O L U T I O N C E N T E R

Download and read the BLI Solutions report.

http://www.acd-inc.com/buyerslab/papercut_bli_report.pdf

Our ACDI powered by PaperCut logo is a symbol representing ACDI as the leading PaperCut distributor for North America. We service the OEM, Dealer & IT Services Channels. Our services include, sales and technical support, training, licenses, and remote and on-site installations. ACDI is also a leading manufacturer of cost recovery solutions, including card readers, kiosks, coin-ops, and much more.

For almost two decades, ACDI has partnered with copier dealers and print software companies to provide solutions for higher education, professional, and commercial markets.

We offer assistance with installations, telephone support, and site development for all of our customers. Our experience enables us to design solutions that are essential in meeting the demands of your copy and print management needs.

Our sales and marketing teams will assist your organization in designing, creating, and implementing efficient and effective support options. We utilize cutting edge technology and various channels including: print material, video training, WebX training, new software release events, trade show collateral, and on-site meetings to keep your team of professionals up-to-date. Market specific and OEM specific custom material is available upon request.



Markets





Powered by **PaperCut**

Education

cost recovery solutions powered by **PaperCutMF™**



ACDI | The Facts.

We sell, install, train and support every aspect of PaperCut®. All under one roof, we call this **ACDI Convergent Solutions**. Over 50,000 organizations in 100 countries rely on PaperCut to control costs and centrally manage their printer, copier, and MFD use.

At the core of PaperCut MF is the ability to interface directly with MFD hardware to track off-the-glass functions such as copy, scan, fax and secure print release.



"IF THE UNITED STATES CUT ITS OFFICE PAPER USE BY ROUGHLY 10%, GREENHOUSE GAS EMISSIONS WOULD FALL BY 1.6 MILLION TONS. THIS IS THE EQUIVALENT OF TAKING 280,000 CARS OFF THE ROAD FOR A YEAR."

www.greenpressinitiative.org/documents/stateofindustrysummary.pdf

The Benefits.

From browser access for students and staff to mixed platform support (Windows, Macintosh, Linux, and Novell), PaperCut can handle the unique challenges of campus networks. Flexible group level controls including monitoring, quotas, charging, print job filtering, and hold/release queues allow you to precisely manage your print resources.

Rules based printing

You can set an upper document size to stop unusually large print jobs. Other filters include a maximum number of copies, color, and duplex printing. There is even a filter to stop “double submitted” jobs caused by accidentally clicking the Print icon twice.

The Result: 30% to 40% reduction in paper usage.

Secure release and “Follow me” printing

In a standard printing environment, a user's jobs are sent directly to the printer for immediate printing. This results in wasted paper and toner when printing is forgotten and not collected. It also presents a security risk if those forgotten jobs were sensitive or confidential. PaperCut print release provides a simple solution that places jobs in a holding state until the user authenticates and releases the job at the printer.

The Result: Complete security and reduction of unwanted print waste including paper, toner, and wear on machinery.



The Benefits.

Automatically convert print jobs to grayscale and duplex.

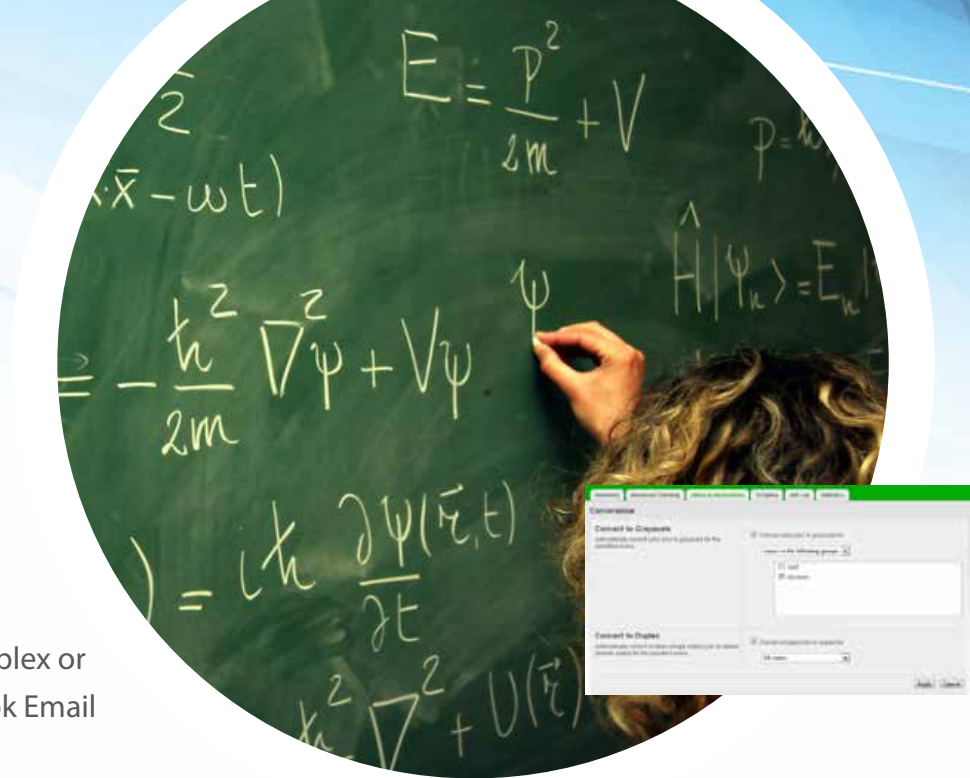
Previously PaperCut could only disallow all single sided and color printing jobs on a printer, but now jobs can be automatically converted to duplex and/or grayscale. For instance, always force students, faculty, and staff to print duplex or use conditional scripting to automatically convert all Outlook Email messages to grayscale.

The Result: 10% to 30% reduction in paper output.

Track your school or universities printing and copying usage with real-time reporting.

Upon completion of each copy session (when the user presses end) the details of the copy transaction are logged into PaperCut in real-time. Provision for network failure is provided enabling session replay from memory. Administrators have access to the same PaperCut reporting and management features as they would have for a standard printer.

The Result: Determine which copiers are used most and pinpoint areas where savings can be increased. Resulting in a greater return on investment.



The Benefits.

Print from anywhere with PaperCut's embedded Web Print solutions.

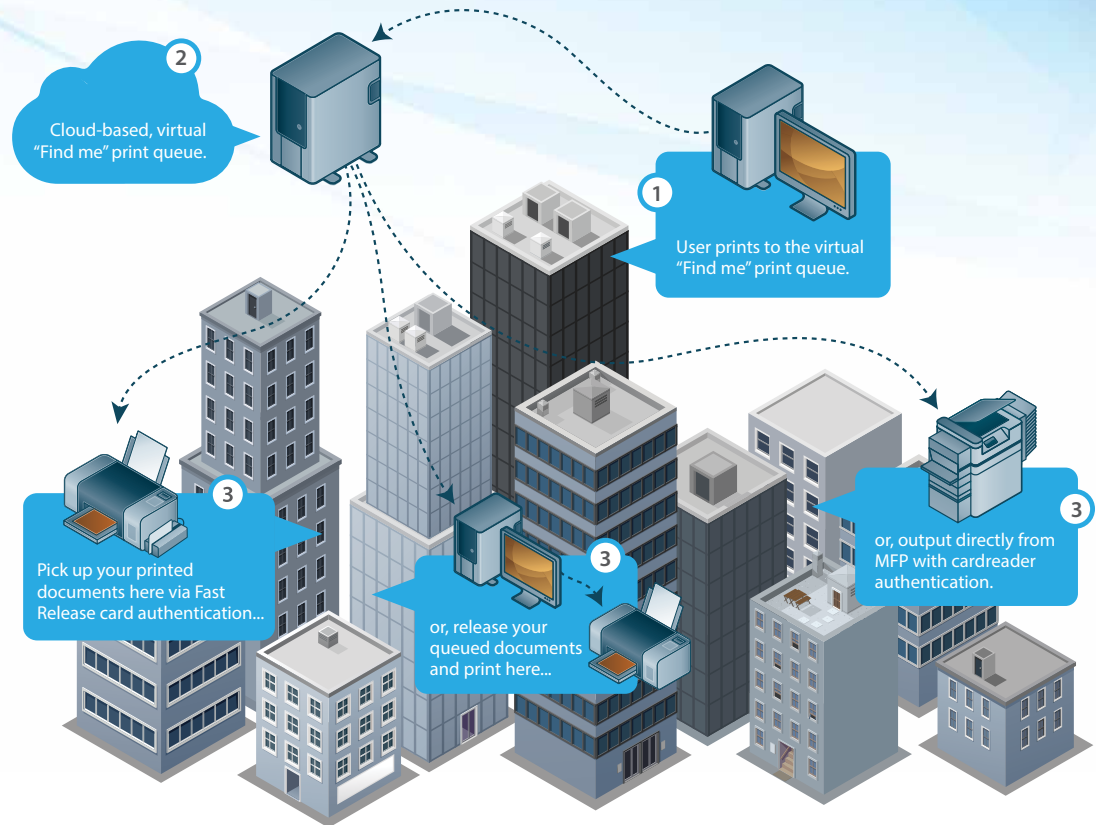
As a core feature of PaperCut, Web Print enables printing from user-owned devices without the overhead of installing printer drivers and managing server authentication. Web Print is PaperCut's unique and industry leading solution to manage the growing need for printing from wireless device.

The Result: 20% to 30% reduction in IT costs.

Your solution will be ready to work when you are.

As a preferred PaperCut Authorized Solution Center, ACDI is dedicated to developing custom software and hardware solutions for its clients. But solutions are only as good as the people who stand behind it. That is why we offer ACDI ProServices, our most comprehensive level of support, yet.

The Result: A reduction in "the cost of doing business."



The Benefits.

More ways for students to pay

- Manual payment (data entered via web)
- Campus cards
- Top-up Cards (a voucher system you can run yourself – no extra costs)
- Online payment gateways: PayPal, Cybersource, Authorize.net and many others
- Cash payment hardware: Dedicated pay boxes, Kiosks, and Coin/Note boxes at release stations



The Result: *complete student satisfaction and a reduction in IT and support staff.*

Embedded Software

For printing, PaperCut authenticates and tracks print jobs at the server layer before they pass to the MFD. To track off-the-glass device usage such as copying usage the authentication and tracking steps need to be done on the device itself. Where possible this is accomplished using embedded software. The embedded software runs on the MFD and works with the PaperCut Server to bring the same experience offered with printing to direct device usage.

The Result: *100% | The percentage of print and copy jobs that can be accurately charged to the correct person, department or pay center.*

Case Study

For John Brown University (JBU), PaperCut is not only slashing print costs, but supporting rationalization of the number of devices across campus and centralization of consumables purchasing.

The Challenge

JBU had two existing print management systems in place and a wide variety of print devices in use. A project to introduce new Toshiba MFPs seemed an ideal time to upgrade print management to allow usage tracking and charge-back. JBU wanted to:

- Move away from departments purchasing their own print supplies, centralizing procurement for better pricing and easier management
- Update its six year old approach to print management
- Introduce a pay-as-you-go model for student printing, and streamline departmental charge-back for faculty members.

The Solution

JBU performed in-depth trial evaluations of PaperCut and two other print management solutions. They selected PaperCut for its high performance in critical areas including:

- Ease of use
- Simple and fast deployment
- Strong integration into MFPs including the new Toshiba devices
- Open API
- Fast RO

School and University Solution

Software:

PaperCut MF®

Hardware (online):

Alpha Touch Terminal

RSX1000 Series (revalue station)

ACD3080 (community card dispenser)

EX2000 (coin-op)

Hardware (offline):

ACD3000 (card reader)

ACD3180 (card dispenser/encoder)

KPE (card encoder)

EX2000 Series (coin-op)

Stands & Accessories:

7000EFS Series Stand

ACDL-114

LCKDwn Kit

CR80-Debit Card

In implementing PaperCut, JBU IT staff reevaluated its approach to print policies – overdue after six years without change! PaperCut was first rolled out to support the new Toshiba MFPs, and then extended to cover print management for staff and faculty, then to students. PaperCut needed to support a range of client devices including Windows and Macintosh desktops and laptops, some connected to an Active Directory domain and some running in a multi-user, single sign-on environment.

How PaperCut Helped

Faculty and staff now have their printing charged to their department at a per-page rate. This automated and simple charge-back removes the need for departments to purchase their own print consumables for cost allocation – instead, purchasing is now centralized through the IT department.

Students have a print quota assigned per semester, and then must add to their balance through the PaperCut Pay Stations if required.

For IT staff, replacing two print management solutions with PaperCut provides simpler administration. The PaperCut implementation covers more devices than the previous solutions, and is future-proof as the university's fleet of devices changes.

“PaperCut has been rock solid and its intuitive web interface has made management a breeze. Deployment was simple and painless and updates require little more than a double-click of the mouse.”

Jeremiah Proctor,

Technical Support Specialist II, John Brown University



Powered by **PaperCut**

Professional

cost recovery solutions powered by **PaperCutMF™**

The Benefits.

*Within the legal environment, PaperCut is well suited to integrate with the most popular legal billing software solutions, such as **PCLaw, ProLaw, Juris, Timeslips, and Tabs3.***

Import to PaperCut

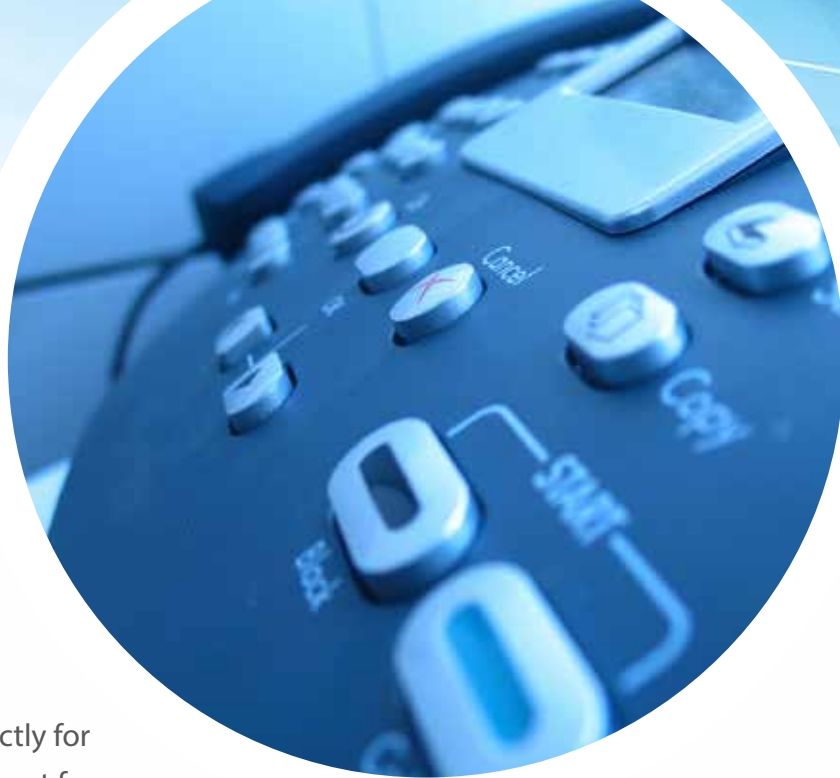
PaperCut requires a tab delimited file. This can be created directly for import or an application can be created to take an existing export from the billing software and convert it to the required format.

The Result: *10% to 30% reduction in labor, IT and workforce costs.*

Export to PaperCut

PaperCut provides a large number of useful reports for shared account use. These reports even include invoicing type reports. Some customers prefer to have the data exported from PaperCut to import back into their billing software. PaperCut easily creates a .CSV file that can be readily imported into your accounting software.

The Result: *10% to 30% reduction in labor costs. Resulting in a greater return on investment.*



The Benefits.

Automatically convert print jobs to grayscale and duplex.

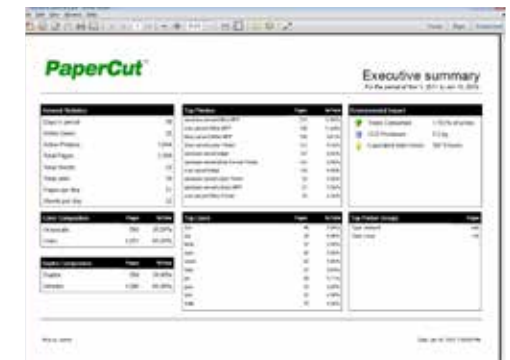
Previously PaperCut could only disallow all single sided and color printing jobs on a printer, but now jobs can be automatically converted to duplex and/or grayscale. For instance always force staff to print duplex or use conditional scripting to automatically convert all Outlook email messages to grayscale.

The Result: 10% to 30% reduction in paper output.

Track your firms printing and copying usage with real-time reporting.

On the completion of each copy session (when the user presses end) the details of the copy transaction are logged into PaperCut in real-time. Provision for network failure is provided enabling session replay from memory. Administrators have access to the same PaperCut reporting and management features as they would have for a standard printer.

The Result: Determine which copiers are used most and pinpoint areas where savings can be increased. Resulting in a greater return on investment.



The Benefits.

Print from anywhere with PaperCut's embedded Web Print solutions.

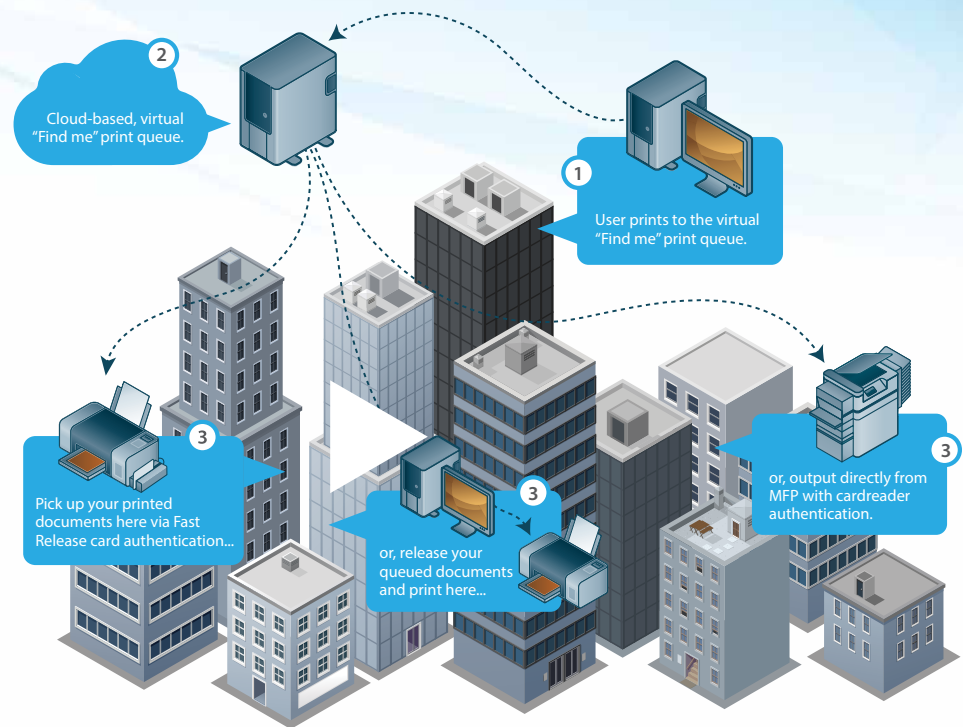
Web Print is PaperCut's unique and industry leading solution to manage the growing need for printing from a laptop, wireless devices and anonymous users. As a core feature of PaperCut, Web Print enables printing from user-owned devices without the overhead of installing printer drivers and managing server authentication.

The Result: 20% to 30% reduction in IT costs.

Secure print release & find-me printing

In a standard printing environment, a user's jobs are sent directly to the printer/MFP for immediate printing. This results in wasted paper and toner when printing is forgotten and not collected. It also presents a security risk if those forgotten jobs were sensitive or confidential. PaperCut print release provides a simple solution that places jobs in a holding state until the user authenticates and releases the job at the printer.

The Result: Complete security and reduction of unwanted print waste including paper, toner and wear on machinery.





Your solution will be ready to work when you are.

As a preferred PaperCut Authorized Solution Center, ACDI is dedicated to developing custom software and hardware solutions for its clients. But solutions are only as good as the people who stand behind it. That is why we offer ACDI ProServices, our most comprehensive level of support, yet.

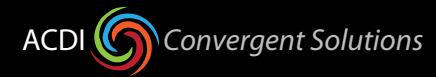
The Result: *A reduction in "the cost of doing business."*

Guarantee that your clients are billed for every print, copy, fax and scan.

PaperCut's advanced client software empowers users to allocate print jobs to specific accounts, allowing you to recover costs from clients, projects and/or departments. A pop-up window actively prompts users to allocate print jobs to specific client accounts.

- Clients or accounts
- Project or phase
- Client/matter
- Department or cost center

The Result: *100% of print and copy jobs will be accurately billed to the correct client or department.*



Law Solution

Hardware:

Alpha Touch Terminal

Software:

PaperCut MF®

Stands & Accessories:

ACDL-114 (paper drawer lock)



Powered by **PaperCut**



Commercial

cost recovery solutions powered by **PaperCutMF™**



EX2000 Advantages

- Multiple Price Lines for B&W & color copies.
- Offline pin accounts for Staff, Service, programming settings, or printing reports.
- Editable text on display screens.
- Multiple copies in one session with full escrow refund or one copy minimum.
- Accepts nickels, dimes, quarters and dollar coins. Also \$1, 5, 10, 20 and major credit cards.
- Comprehensive reporting. (Online and Offline)
- Supports Foreign Currency.
- Interfaces with pay-for-print solutions. (Print management software required)
- Includes pricing signage, service manual and installation instructions.
- Can be card revaluing station.
- Wall mount or optional pedestal.

The EX2000 Series is a true workhorse. With next-generation technology built in and industry leading versatility, the EX2000 is a must-have in any retail print and copy solution. It makes copy and print control easy and affordable.

The EX2000 series offers multiple price lines allowing you to charge different prices for color and black & white prints and copies. Offline PIN accounts for staff and service make programming settings and printing reports a snap. The EX2000 accepts a multitude of currency options and interfaces with pay-for-print, print management software solutions, empowering your clients and your bottom line.



Cost Recovery

10 Reasons to use PaperCut

Cut Waste and Your Carbon Footprint

Encourage responsible printing with PaperCut MF quotas and print policies, cutting paper and toner costs and power usage.

Apply Print Policies

Enterprise-Wide With PaperCut MF, printing requests are intercepted at the print server to control jobs according to policies that encourage or enforce good behavior.

Offer Driver-less Web Printing

Simplify printing with Web Print, a unique PaperCut MF feature that allows end users to print wireless from laptops and netbooks with no driver installation or server authentication.

Enable Find-Me / Secure

Print Release PaperCut MF protects confidential documents and slashes the volume of unclaimed printouts by ensuring users release print jobs at the point of printing.

Monitor and Report on Usage

Real-time monitoring and reports address all areas of print/ copy/fax/scan management, ranging from detailed page logs to summaries by user, department, device or environmental impact.



WHY PAPER CUT?

MONITORING AND CONTROL IS THE KEY TO REDUCING YOUR ORGANIZATION'S PRINT COSTS AND ENVIRONMENTAL IMPACT. PAPER CUT IS THE SOLUTION SELECTED BY OVER 50,000 ORGANIZATIONS IN OVER 100 COUNTRIES. AS A MODERN, CROSS-PLATFORM SOLUTION DESIGNED FOR NETWORKS OF ALL SIZES, PAPER CUT IS A RICH FEATURE, WEB BASED BROWSER CONSOLE FOR BOTH USERS AND ADMINISTRATORS.

Deploy Simply

An installation wizard installs server software and then proceeds to automatically detect printers and multi-function devices on your network.

Administer Centrally, Manage Easily

PaperCut MF provides browser-based administration access from any network location, providing advanced administration and configuration options in an intuitive user interface.

Integrate with Your Intranet and Other Systems

A customizable web interface ensures you can easily integrate with your intranet site, and a fully documented API and scripting interface let you integrate PaperCut MF with other IT systems.

Scale Up Effortlessly

Modern software design and architecture provides scalability for networks of all sizes, from five to 500,000 users.

Maximize Uptime and Availability

PaperCut MF delivers a robust approach to maintaining service by clustering at the print spooler, application server and database (for cluster-aware databases), as well as automatic fail-over protection against single points of failure.



THE SWIPER

THE SWIPER IS A COST EFFECTIVE CREDIT CARD READER THAT INTERFACES WITH ALMOST EVERY COPIER AND MFP IN THE MARKET TODAY. CLIENTS AND CUSTOMERS WITH THE NEED TO PRINT AND COPY WHILE OUT ON THE ROAD OR AFTER BUSINESS HOURS WILL LOVE THE EASE OF USE AND THE SECURITY OF VIEWING THEIR TRANSACTIONS VIA A BROWSER.

How it works

PaperCut works by intercepting printer usage at the server level, calculating the cost, and deducting it from a central account associated with a user, department, group or client account. Administrators can define quotas by scheduling credit allocation at defined intervals. In a pay for print environment users can add funds to accounts using a variety of online payment systems to implement a self-managing user-pays system solution selected by over 50,000 organizations in over 100 countries. As a modern, cross-platform solution designed for networks of all sizes, PaperCut is a rich feature, web based browser console for both users and administrators. Most importantly it is a cost-effective solution with a proven return on investment.

Easy to deploy and administer

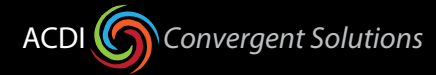
PaperCut is hardware vendor and operating system neutral. It works on all major printer brands and supports standards including PCL and Postscript. Unlike other solutions PaperCut is a full cross-platform system supporting all major operating systems including mixed environments. Would you like to host some printers on Windows and others on Apple, Linux or Novell?

Advanced User Management

- Automatic User Import
- Account Creation Rules
- Internal Users
- Detailed Logging
- Monitor Load & Error Events

Define Printing Cost

- Page-level Color Detection
- Advanced Filtering & Restrictions
- Local & Server Printers
- Secure Printing & Print Release Stations



Commercial Solution

Hardware:

EX2000 Series (Coin-op)

SWIPER (Visa®, MasterCard®, Discover® and American Express®)

Software:

PaperCut MF®

Stands & Accessories:

Sidekick

7000EFS Series Stand

ACDL-114

LCKDwn Kit

Software



Eliminates waste, encourages responsible behavior and enables user and department accountability for print usage. PaperCut MF includes embedded software that runs on your copier/MFD to enable tracking, control and secure print release directly from the device's panel.

PaperCut MF is suitable for sites of any size, with a cross-platform and vendor-neutral approach to technology and device support. PaperCut's solutions are currently in use in over 50,000 sites worldwide and translated into 20 languages, making PaperCut MF a product you can trust with a high return-on-investment.

- *Track all MFDs / Printers*
- *Secure Print Release*
- *Control and Report Use*
- *Recover Costs*
- *Enforce Print Policy*
- *Minimize Waste*
- *Web Print*

INTUITIVE AND EASY TO USE

PaperCut MF is regarded as the simplest system of its type to deploy and manage. System administrators have full access to administration and configuration via a familiar web interface. It offers:

- User directory (eg. Active Directory and others) integration and automatic user account creation
- Secure print release and Find-Me printing
- Administrator dashboard with real-time status updates
- Print Archiving: Review job content visually
- Optional client and account billing
- Ability to encourage responsible use via popup notifications



DETAILED REPORTING

PaperCut includes over 80 one-click reports available for online viewing, printing or export. Reports address all areas ranging from detailed page logs to summaries by user, department, device or environmental impact. Administrators can create ad-hoc reports by applying filter conditions and reports can be emailed to specified people on a regular schedule.

WEB BASED ADMINISTRATION

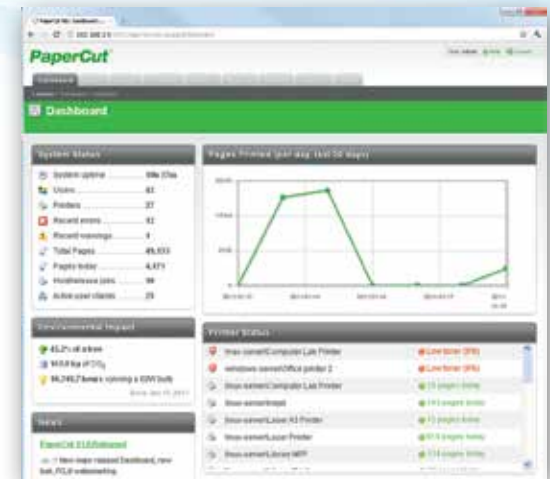
PaperCut MF provides “out of the box” browser-based administration access from any network location enabling centralized management of every user and device. Web technologies make cross-platform support easy as there is no need for additional software to be installed and no web server configuration. A key feature of the administration interface is the dashboard tab – an easy-to-read single page view of the printing environment for administrators. The Dashboard page utilizes a number of gadgets to present key real time information such as system activity and status updates, along with trend information and statistics from past activity such as number of pages printed and environmental impact measures.

POWERFUL JOB SCRIPTING

Advanced scripting can be used to define and finely tune your printing policy, and support your organization in eliminating waste and changing user behavior.

With PaperCut you can:

- Automatically route large jobs to detected high volume printers
- Discourage printing of emails via popup print policy warnings
- Convert jobs to grayscale and duplex
- Discourage or disable color printing by user group
- Least cost routing (suggest more cost effective devices based on conditions)
- Allow free printing (e.g. during class times)
- Define action by job attribute, user / group, period of day, device feature / type.



SECURE PRINT RELEASE

PaperCut's Find-Me printing feature enables users to print to a global virtual queue. Jobs are paused and only printed when the user releases the job at any compatible MFD/prINTER:

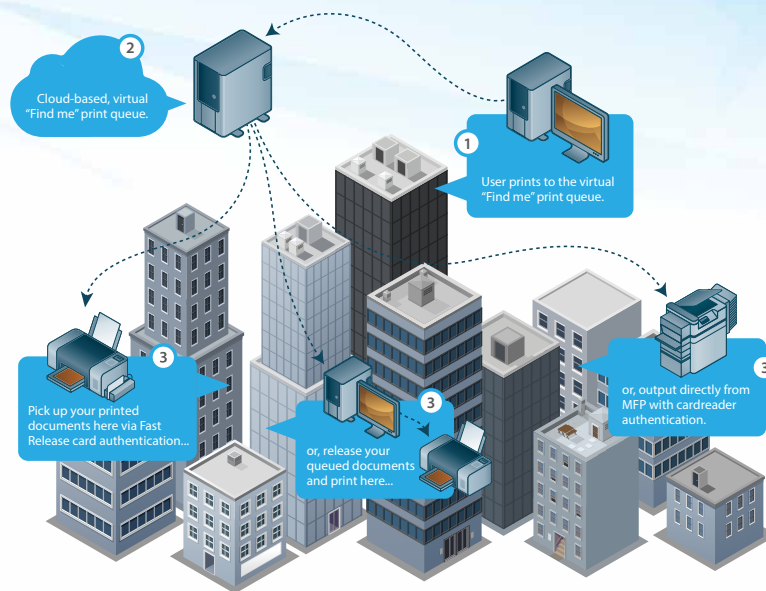
- Improved document security and convenience.
- Reduce IT administrators need to manage multiple print drivers and queues for both workstations and notebooks.
- Find-Me printing minimizes waste and has been shown to reduce printing output by up to 20% in busy office environments.
- Support for multiple release methods ranging from auto release on authentication to active release job-by-job.

SECURE DEVICE ACCESS

Today's MFDs are smarter. They have touch screens and the ability to run software directly on the device's panel. PaperCut leverages this technology to bring new features to each device.

One of the key features is user authentication – only allowing device access to authorized users. At the simplest level users can authenticate with network user-name and password via an on-screen keyboard. In addition many environments will implement ID card authentication. Card numbers can be extracted from your network's user directory or a database (e.g. door access control system), alternatively users can self-associate their card on first- use.

Card types include magnetic stripe, proximity (HID, Mifare & Legic) and bar codes, and PaperCut supports many brands of USB card readers including RFIdeas, Elatec and OmniKey. Off the shelf standard USB and network card readers are available from leading suppliers. PaperCut have a global network of hardware experts (Authorized Solutions Centers) should you require technical assistance, advice or on-site support of both software and hardware.



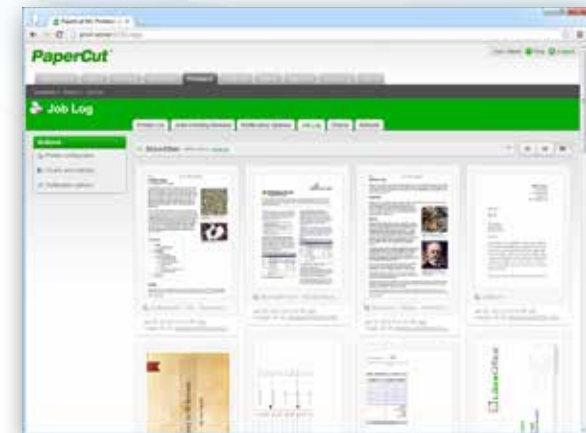
PRINT ARCHIVING & WATERMARKING

PaperCut administrators can utilise these features to ensure users are answerable to their printing. PaperCut's Print Archiving empowers approved administrators to browse and review the content of print activity within their environment. Alongside the powerful tracking and reporting functionality built into PaperCut, this gives system administrators a wide range of auditing functions.

Watermarking can automatically add a user-name or other metadata to the bottom of every page e.g. to indicate the document owner. Watermarking may include a unique digital signature which allows you to track document origin to enhance security and encourage responsible printing.

IPAD, MOBILE AND DRIVERLESS WEB PRINTING

The introduction of iPads, mobile devices, tablets, netbooks and BYO devices have brought a new set of challenges to the printing landscape. PaperCut can help solve these problems with native iPad print support and web based driverless printing – core features in PaperCut. Users of these devices have access to the full range of features including authenticating, account selection and 'find-me' printing in a simple user interface.



PAYMENT GATEWAYS

Give end users the ability to make payments into their PaperCut account using payment gateways.

Payment gateways allow third party systems to connect to PaperCut in a supported manner. Common gateways include leading providers like PayPal and Authorize.Net which allow real-time online payments via credit card. PaperCut also supports closed or internal payment systems such as a main college funds account. Hardware gateways are available to support a range of cash loaders, self-service kiosks and bill and coin boxes. For hardware, please refer to a PaperCut MF Authorized Solution Center.

USER WEB INTERFACE

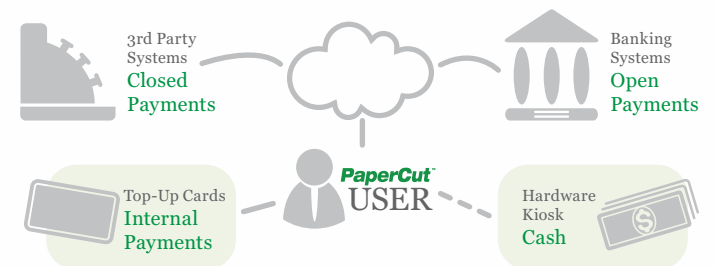
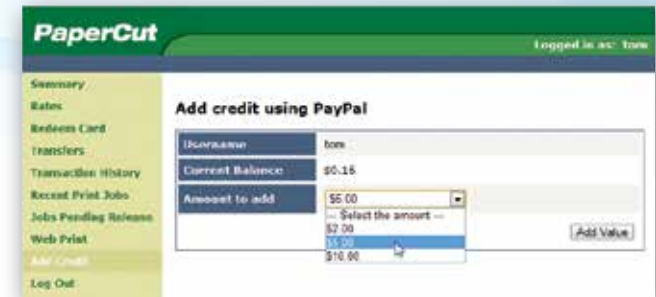
End users have access to a set of web tools to track their own activity in real-time, query their account balances, and view their transactions – without the need for intervention from administrators. The end user interface is fully customizable, so you can design a look and feel to match your website or intranet pages.

MANAGING QUOTAS

Users can operate in either credit or debit, with defined account rules including how and how often an account is credited. Use network groups to define how additional quota/credit is assigned. Use network groups to define how additional quota/credit is assigned; for example, allow a specific group of users to accumulate their quota while others operate on a “use it or lose it” basis.

PRE-PAID/TOP-UP CARDS

PaperCut MF comes with a simple to implement voucher system for purchasing additional print credit. Administrators can print out a batch of single-use cards with a pre-defined value. Users redeem cards by entering the card's unique code on a web page.



SCALABILITY:

- Suitable for networks of 5 to 500,000+ users

ARCHITECTURE:

- Single server or multi-server environments
- Monitor locally attached printers
- Client software is optional
- Available in 20+ languages and currency formats world-wide

LICENSING:

- Enterprise-wide license: unlimited printers, servers, and workstations
- Licensed based on number of end users, plus a per-device license for MFD's running embedded software
- Premium Upgrade Assurance included for first 12 months

OPEN SYSTEMS:

- Open documented database schema
- XML Web Services API with sample code

SUPPORTED SERVER OPERATING SYSTEMS:

- Microsoft Windows Server (any edition including 64-bit and server core)
- Mac OS X Server (10.6 or higher)
- Linux (any modern distribution)
- Novell OES Linux and iPrint

SUPPORTED USER DIRECTORY SERVICES:

- Active Directory (native integration including nested groups and OU's)
- OpenDirectory

- eDirectory
- LDAP
- NIS, PAM, Samba, and others.

SUPPORTED WORKSTATION OPERATING SYSTEMS:

- Microsoft Windows (any edition)
- Mac OS X (10.5 and above)
- Linux (any modern distribution)
- Unix Workstation (Java required to run client software)

MFDS/PRINTERS:

- Almost all major digital laser, inkjet and wide format devices supported
- Supported print languages: PCL, PCL6, HPGL, Postscript, PCL-GUI, Ricoh RPCS, Epson ESC, QPDL, various GDI printers and many languages that don't even have names

SUPPORTED DATABASE SERVERS:

- Self managing internal database: suitable for up to 5,000 end users
- Microsoft SQL Server 2000/2005/2008/2012 (either 32 or 64 bit)
- Microsoft SQL Express 2005/2008/2012 (free from Microsoft)
- PostgreSQL 7.1 or higher
- MySQL 5.0 or higher
- Oracle 9.2 or higher

SUPPORTED CLUSTER ENVIRONMENTS:

- Microsoft Failover Server
- Microsoft Cluster Server
- Veritas Cluster Server
- Linux HA

ENCRYPTION:

- SSL encryption used for sensitive client server communication.

Print and Internet Quota charging, tracking and monitoring application designed to promote the responsible use of IT resources. It's a premium cross-platform solution specifically designed to meet the needs of schools, universities and other organizations. Implementations range from silent monitoring, quota control to user-pays systems.

PaperCut NG leads the way with innovative features, cross-platform support, source code access and enterprise level scalability.

HOW DOES IT WORK?

PaperCut NG works by intercepting printer usage at the Server level, calculating the usage cost, and deducting it from a central account associated with the User's login.

Administrators may define a quota by scheduling credit allocation at specific intervals. Alternatively, integrating hardware via PaperCut MF and using the Top-Up/Pre-Paid Card tool to create a self-managing User-pays System. Printer usage is calculated on a cost-per-page basis with advanced charging options available for color, different page sizes and double-sided printing. In a business environment, PaperCut NG is often implemented in "silent mode" where only managers are made aware of usage or is used to track at the client/project/cost center level.

In a school or university environment, PaperCut is run in a visible "restricted" mode. Users, exceeding their credit, are automatically denied access to the resources. Staff members are granted access to shared accounts to track printing by department or faculty.

HOW MUCH PAPER ARE YOU USING?

That sounds like an easy question, but many organizations simply have no idea of the volume of paper used for printing. If you do know, do you know where it goes? PaperCut NG can arm you with information not just about overall printing volumes, but volume by printer, group/department, user and many other factors. So next time the question is asked, "where does all the money we spend on printing go?", the answer is a few clicks away.

HOW MUCH PAPER CAN YOU SAVE?

There are many ways to implement PaperCut, so the amount saved will depend on which features and strategy you choose to implement. The following table gives an indication of the typical amount of paper saved by implementing each strategy.

We have also created a simple-to-use ROI Calculator to calculate your savings

http://www.acd-inc.com/papercut_roi.php

Support



ACDI ProServices is our top-of-the-line support package. ProServices offers everything you will need to ensure that your investment is up and running all-day, every-day.

PaperCut gets an average of 6 to 8 upgrades a year and you will have access to all of them; it doesn't matter if they are major or minor. With Upgrade Assurance, a nice support package on its own, you get phone, email and remote login support. With ProServices, you get all of that and more.

Everyone has different needs and no two situations are the same. When problems arise, on-site support can save you thousands of dollars. We travel to your location, listen to you, diagnose the issue and don't leave until you are up and running again.

Planning on make a few changes? Our consultation services will work with you to answer your questions and help you make those hard descisions. With our vast knowledge of the industry, we can help you avoid the unforeseen pitfalls. Our customization services are available when you are looking for a solution that isn't right out of the box. ACDI can customize a software and hardware plan that is cost-effective and just right for your needs.

	ProServices	Upgrade Assurance
Upgrades	✓	✓
Phone Support	✓	✓
Email Support	✓	✓
Remote Login	✓	✓
On-site Support	✓	✗
Consulting Services	✓	✗
Customization	✓	✗
Third-party Support	✓	✗

Hardware



EX2000 SERIES MULTI-VEND

The EX 2000 Series is the most reliable and aesthetically pleasing unit on the market today. With its unmatched functionality, it is the solution for all your print and copy needs. Printing reports has never been easier. You can output directly from the EX2000 to the MFP it's attached to, without the need for a separate printer. They are compatible with most copiers on the market today. Control your overhead by reducing your paper and equipment costs with the EX2000.



EX2000 Series Multi-Vend



7000EFS: standard base



ACDL-114: paper drawer lock

Size and weight

- Height: 27.25"
- Width: 13"
- Depth: 5.5"
- Weight: 45-55 lbs

Display

- 2x16 backlit LCD
- Alphanumeric
- Editable text on screen

Processor

- EXTechnology control board
- Multiple prices: differentiates between b/w, color, and premium paper sizes (on most copier models)
- Field programmable (copier models selected via external keypad)

Internal Components

- Coinco 3-tube changer
- (Optional) Coinco 4 or 6-tube changer
- Coinco bill stacker: \$1's, \$5's, \$10's & \$20's
- Euro Coinco 3-tube changer and bill stacker

Capacities

- Nickels: 86, Dimes: 125, Quarters: 95
- Bills: 500
- Cashbox: approximately \$500 in change
- 100 User codes

Power

- 24VAC

External buttons and controls

- 10 digit numeric keypad
- Forward, Backward, Enter, Eject
- Coin return
- 2-bypass keys

Sensors

- Use exact change (when coin-tubes are low)
- Minimum copy vend (requires a "vended" copy before making change)
- Auto detect coin count

Copy system requirements

- Copier interface: H20-"Copier OEM"
- Smart interface required on select models

Print system requirements

- Pay-for-print software
- Annual License
- Release Station interface Software

Environments

- University Library
- Public Library
- Court House
- Grocery Store
- Convenience Store
- Copy Shop

Languages

- Supports English

In the Box

- EX2000 Series coin-op
- H20-Copier OEM (copy harness)
- Stand (optional)
- Power Supply
- 3 sets of keys (door, cashbox, bypass)
- Price decals & Owner's manual

Configuration Options

- EX2000: coins only
- EX2000B: coins & bills
- EX2000BC: coins, bills & stored-value cards
- EX2000CCB: coins, bills & credit cards (Visa, MC, AMEX, Disc)
- EX2000SW: coins & account cards
- EX2000SWB: coins, bills & account cards

Stands & Accessories

- 7000EFS: standard base
- 7000LEFS: standard base and coin-op security plate
- 7000LP: coin-op security plate (requires 7000EFS)
- 2015PD: pedestal style base
- ACDL-114: paper drawer lock
- Extractor Software: manage coin-op meters from central PC
- Phantom Print: print reports directly to MFP (requires Ethernet connection)

Assembly & Warranty

- Made in USA
- Standard 2 Year Warranty
- Extended Warranty (optional)

EZVEND SERIES MULTI-VEND

We have extended the EX Technology into our line of EZVend series control solutions for greater performance and enhanced reporting at an affordable price. The EZVend is designed to accept coins and/or dollar bills. Users will take pleasure in the external service keys that provide a simple yet intuitive menu system for configuration and setup. Plus, they are compatible with most copiers on the market today.



EZVend Series Multi-Vend



7000EFS: standard base



ACDL-114: paper drawer lock

Size and weight

- Height: 27.25"
- Width: 13"
- Depth: 5.5"
- Weight: 45lbs

Display

- 2x16 backlit LCD
- Alphanumeric
- EXTechnology control board (simplified)

Processor

- EXTechnology control board
- Single price only
- Field programmable (copier models selected via external keypad)

Internal Components

- Coinco 4-tube changer
- (Optional) Coinco 6-tube
- Coinco bill stacker: \$1's & \$5's
- Euro Coinco 3-tube changer and bill stacker

Capacities

- Nickels: 86
- Dime: 125
- Quarters: 95
- Bills: 500
- Cashbox: approximately \$500 in change

Power

- 24VAC

External buttons and controls

- Forward, Backward, Up, Eject
- Coin return
- Bypass

Sensors

- Use exact change (when coin-tubes are low)
- Minimum copy vend (requires a "vended" copy before making change)

Copy system requirements

- Copier interface: H10-"Copier OEM"

Print system requirements

- Not available

Environments

- University Library
- Public Library
- Court House
- Grocery Store
- Convenience Store
- Copy Shop

Languages

- Supports English

In the Box

- EZVend Series coin-op
- H10-Copier OEM (copy harness)
- Stand (optional)
- Power Supply
- 3 sets of keys (door, cashbox, bypass)
- Price decals & Owner's manual

Configuration Options

- EZVend100: Coins only
- EZVend200: Coins & \$1's - \$5's

Stands & Accessories

Wall mount or optional base

- 7000EFS: standard base
- 7000LEFS: standard base and coin-op security plate
- 7000LP: coin-op security plate (requires 7000EFS)
- 2015PD: pedestal style base
- ACDL-114: paper drawer lock
- Extractor Software: manage coin-op meters from central PC
- Phantom Print: print reports directly to MFP (requires Ethernet connection)

Assembly & Warranty

- Made in USA
- Standard 2 Year Warranty
- Extended Warranty (optional)

THE SWIPER

Invite The Swiper into your environment and you'll see a total transformation in the disposition of your customers. The Swiper provides a comfortable, easy to use method for paying for copies and prints. If coin and bill collection is a burden to you, implement The Swiper and its paperless solution to relieve the strain of manual cash collection and reconciliation. With the Swiper, all the transactions are captured wirelessly and visible online by registering your account. Complete transparency and automated reporting is worth the investment alone, not to mention the convenience given to your customers. It accepts all the major credit cards: Visa, American Express, Discover, and MasterCard. In addition to being overly user friendly and easy to use, The Swiper is without moving parts, which means its reliability is unmatched in the industry today. Simply swipe your card and begin making copies; it's that easy!



The Swiper



Sidekick-1000: stand



ACDL-114: paper drawer lock

Size and weight

- Height: 5"
- Width: 6"
- Depth: 7.5"
- Weight: 6 lbs

Display

- 2x16 backlit LCD
- Alphanumeric
- Optional register display

Processor

- EXTechnology control board
- Multiple prices: differentiates between b/w, color, and premium paper sizes (on most copier models)
- Field programmable (copier models selected via external keypad)
- Wireless "Cell Phone" processing: DOES NOT use Ethernet or phone line connection

Capacities

- Reads Visa, MC, Amex, AMEX
- ATM Cards
- Bank Debit Cards
- Gift Cards

Power

- 24VAC

External buttons and controls

- Credit card swipe
- Bypass

Copy system requirements

- Copier interface: H20-"Copier OEM"
- Smart interface required on select models

Print system requirements

- Pay-for-print software
- Release Station interface Software

Environments

- University Library
- Public Library
- Court House
- Grocery Store
- Convenience Store
- Copy Shop
- Hotel Business Center
- Real estate agency

Languages

- Supports English

In the Box

- SWIPER
- H20-Copier OEM (copy harness)
- Stand (optional)
- Power Supply
- 2 Bypass keys
- Owner's manual

Configuration Options

- Swiper: accepts Visa, MC, AMEX, Disc

Stands & Accessories

- Sidekick-1000: stand
- ACDL-114: paper drawer lock
- SKT-40: Receipt printer

Assembly & Warranty

- Made in USA
- Standard 2 Year Warranty
- Extended Warranty (optional)

ACD3000

Cost recovery is more critical today than ever before. One simple way to generate savings and a possible revenue stream is to implement a card system. The ACD3000 Series debit card reader utilizes ACDI's own EXTechnology to setup individual price lines for each controllable MFP function. Business centers, libraries and universities can combine the ACD3000 with print management software to have a complete self-contained, customized solution.



ACD3000



Sidekick-1000: Stand



Extractor Software

Size and weight

- Height: 5"
- Width: 4.75"
- Depth: 7.25"
- Weight: 5lbs

Display

- 2x16 backlit LCD
- Alphanumeric
- Editable text on screen

Processor

- EXTechnology control board
- Multiple prices: differentiates between b/w, color, and premium paper sizes (on most copier models)
- Field programmable (copier models selected via external keypad)
- Editable text display

Internal Components

- Internal mag stripe reader

Capacities

- Reads CR80 cards, black core, mag stripe, tracks 2, 4, & 5.5 Left
- Reads CR50 cards, black core, mag stripe, center track
- 100 User codes

Power

- 16VAC

External buttons and controls

- 10 digit numeric keypad
- Forward, Backward, Enter, Eject

Copy system requirements

- Copier interface: H20-"Copier OEM"

Print system requirements

- Pay-for-print software
- Release Station interface software

Environments

- University Library
- Public Library
- UPS Store
- Copy Shop

Languages

- Supports English

In the Box

- ACD3000
- H20-Copier OEM (copy harness)
- Stand (optional)
- Power Supply
- 2 keys
- 1 cleaning card
- Documentation

Configuration Options

- ACD3000

Stands & Accessories

- Sidekick-1000: Stand
- ACDL-114: paper drawer lock
- Extractor Software: manage coin-op meters from central PC
- Phantom Print: print reports directly to MFP (requires Ethernet connection)

Assembly & Warranty

- Made in USA
- Standard 2 Year Warranty
- Extended Warranty (optional)

ACD3180

The ACD3180 Card Dispenser/Encoder is a convenient way of purchasing new copy cards or recharging existing ones. By simply inserting cash or swiping a major credit card, you will be armed with a fully active copy card that can be used to pay for copies and prints. The ACD3180 leverages technology that virtually eliminates the need for staff intervention and increases productivity.



ACD3180



KPE3000



CR80 Copy Card



3000PD Pedestal Stand

Size and weight

- Height: 20"
- Width: 17.75"
- Depth: 10.5"
- Weight: 70lbs

Display

- 2x16 backlit LCD
- Alphanumeric

Processor

- EXTechnology control board
- Field programmable
- Editable text display

Internal Components

- UCR1000 (card reader/encoder)
- Coinco bill stacker: \$1's, \$5's, \$10's & \$20's
- Credit Card reader (Optional)

Capacities

- Holds approximately 290 cards
- Bill stacker holds 500 bills
- Visa, MC, AMEX, Discover (Optional)

Power

- 24VAC

External buttons and controls

- High security lock
- Dispense button

Copy system requirements

- Does not Apply (only used for dispensing/programming cards)

Print system requirements

- Does not Apply (only used for dispensing/programming cards)

Environments

- University Library
- Public Library
- Court House
- Grocery Store
- Convenience Store
- Copy Shop

Languages

- Supports English

In the Box

- ACD3180
- Power Cord
- 1 Barrel Key
- Owner's manual

Configuration Options

- 3180-B: bills only
- 3180-CCB: credit cards and bills

Stands & Accessories

- Wall mount
- 3000PD - Pedestal stand
- CR80 Copy Card
- CopyMate KPE
- SKT-40: Receipt printer

Assembly & Warranty

- Made in USA
- Standard 2 Year Warranty
- Extended Warranty (optional)

KPE3000

The KPE3000 is part of our “stored-value” card system which provides control and convenience to administrators for encoding new cards and for adding or subtracting value from existing cards. Cards may also be encoded with Cash Value or Units. PIN access provides security, preventing unauthorized access. Each machine is equipped with a step-by-step procedural guide that is visible while entering transactions, enabling your staff to move through the service mode with ease.



KPE3000



CR80 Copy Card

Size and weight

- Height: 5"
- Width: 4.75"
- Depth: 7.25"
- Weight: 5lbs

Display

- 1x16 backlit LCD
- Alphanumeric

Processor

- EXTechnology Control Board

Internal Components

- PCS3500

Capacities

- Encode in cash value
- Encode in units
- Three group codes

Power

- 24V External (US)

External buttons and controls

- Keypad differs

Copy system requirements

- Does not Apply (only used for| programming cards)

Print system requirements

- Does not Apply (only used for| programming cards)

Environments

- University Library
- Public Library
- UPS Store
- Copy Shop

Languages

- Supports English

In the Box

- KPE
- 2 Super Cards
- Power Supply
- Owner's manual
- Keys for housing

Configuration Options

- KPE

Stands & Accessories

- CR80 Copy Cards

Assembly & Warranty

- Made in USA
- Standard 2 Year Warranty
- Extended Warranty (optional)

CR80 COPY CARDS

CR80 Copy Cards are the cards used with our “stored-value” card system. They are mag stripe cards that have a value, allowing a patron to make copies and/or prints. The value is stored on the card, not within a database. Therefore, if the cards are lost or stolen, the value cannot be retrieved. Choose the ACDI brand, CopyMate (illustration shown), or design your own card; ACDI offers both!

Card specifics

HighCo, 4000 Oersted, black core

Size

standard credit card dimensions, 30 millimeters thick.

Available mag stripe positions

Track IV (standard), Track II, Track 5.5 Left





CPAD TERMINAL

CPad is a high resolution 7" touch screen that interfaces with your copier, and brings all of PaperCut's core functionality to almost any copier.

CPad works by locking the copier until the user has authenticated by one of the various configurable authentication methods. Users interact with the Cpad via a rich touch screen, offering an intuitive interface. Copying is tracked and reported to the PaperCut central server in real time.

For secure print release and PaperCut "find me" printing, users are presented with an on-screen list of print jobs and may release their jobs with one touch. CPad supports all advanced features such as card readers, self-association/ registration of cards and account selection via keyword/ID search. The CPad delivers a high level of functionality for any environment.

CPad Terminal



At a glance

Now you can take control of copy costs and print management on almost any multi function device using the Cartadis CPad terminal with PaperCut MF. With CPad you can enforce copy & print quotas that encourage users to think before they print. The CPad can turn almost any device into a papercut machine while environmental impact reporting gives you facts on usage.

- MFP manufacturer independent
- Easily transferred between devices
- CPad has the core functionality of PaperCut
- Secure Print Release and PaperCuts "find me" printing
- Charging to shared accounts/departments management
- Supports multiple authentication methods
- Swipe Card Authentication
- Username/Password Combination
- ID Number / Code

Features & Specifications

- High resolution 7" color touch screen
- Real-time responsive touch interface
- Built-in dual port ethernet hub Ethernet 10/100 Base-T
- Dual USB ports for card readers and other supported hardware
- External power supply
- True 2.6 Linux operating system
- 128 MB Flash disk, 64 MB RAM
- Multiple USB card readers supported; HID, mifare and others.
- Cable locking cover reduces risk of disconnection.
- Dimensions: 188 x 127 x 37 mm
- User interface configurable to promote your organizations corporate brand



PROX SERIES

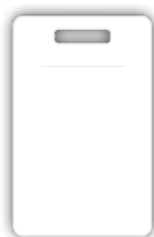
Prox Series card readers are designed for customers seeking to leverage their existing card system for applications beyond physical security. Engineered to work with nearly all proximity technologies, Prox Series readers provide error-free identification for over 300 million physical access proximity cards worldwide. Featuring plug-n-play functionality, no required software, and embedded configurable flash memory, the reader is ready to integrate with nearly all operating systems, applications, and embedded controllers.

The USB model emulates a keyboard and keystrokes the card's ID and/or site code to the cursor's location on the screen. The reader can be configured to add keystrokes before and after the card's data. The serial version, available in RS-232, Ethernet, or USB Virtual Com, delivers the card's data in ASCII.

Prox Series



Prox Bracket Kit



ProxCard II HID 1326 Clamshell Card

Applications

- PC/LAN access control
- Application log-on
- Employee identification
- Time and attendance
- Form filler to existing software applications
- PLC and embedded controllers
- Hoteling, meeting attendance, visitor management
- Secure printing
- Point of sale

Easy Interface:

Since there is no software deployed, the plug-n-play reader designs are truly easy to integrate into your existing application. The USB models connect directly to USB ports and send data as keystrokes. The RS-232 model connects to a serial port and sends data as ASCII. The Ethernet model comes with free software to redirect the IP address to virtual COM port on Windows® PCs. The USB Virtual COM model emulates a virtual serial device.

Compatibility:

Compatible with Windows CE®, Windows 2000®, Windows XP®, Windows Vista®, Windows 7®, Macintosh®, the Solaris™ operating system, Sun Ray™ thin clients, and Linux. (Free configuration software requires Windows® operating system.)

Information and Productivity

Eliminates errors associated with individual identification.

Versatile Mounting Options

The standard housing can be placed anywhere on the desktop. Featuring an articulated cable, it can easily be mounted on kiosks, monitors, time clocks, and more. Optional base and mounting brackets expand placement options. Other form factors allow for easy, unobtrusive placement.

Ports/Styles

USB, USB Dongle Reader, RS-232, PCMCIA, Ethernet, Keyboard, OEM bare board

Desktop Unit Colors

- Black & Pearl

Supported Cards—Partial List

- | | |
|------------------------|-----------|
| ■ HID | ■ Casi |
| ■ Indala | ■ Pyramid |
| ■ Kantech ioProx | ■ AWID |
| ■ Cardax | ■ Deister |
| ■ G-Prox II | ■ Keri |
| ■ Honeywell / NexWatch | |
| ■ EM / Rosslare | |
| ■ HiTag | |

Typical Maximum Read Range

1.0" – 3.0" (2.5 – 7.6cm) dependent upon proximity card type and environmental conditions

Desktop

Dimensions: 3 3/8" x 2" x 0.6" except for Indala, Pyramid

Desktop Weight 0.45 lbs (204g)

Power Supply and Interface

USB self-powered; RS-232 model: several power options exist

Indicators Tri-state LED, beeper

Transmit frequency 125 kHz

Operating Temperature Range

-22° to 150°F (-30° to 65°C)

Operating Humidity Range

5% to 95% relative humidity, non-condensing

Storage temperature range

-40° to 185°F (-40° to 85°C)

Interface RS-232 DB9, USB or Ethernet

Certifications

FCC, United States; CE Mark Europe, C-TICK, RoHS, Industry Canada



ID SERIES

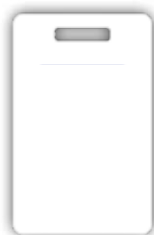
The ID Series contact-less smart card readers eliminates the need for manual entry, providing error-free identification. ID Series is compatible with nearly all 13.56 MHz contact-less cards/tags/labels. This reader allows users to use their building access card or other 13.56 MHz tags for other forms of identification and security throughout the workplace. The plug-n-play reader comes with flash memory, allowing the user to quickly configure the output to meet the user's needs.

As a card enrollment or ID badge reader/tester, the USB model emulates a keyboard and will keystroke the card's data to the cursor's location on the screen. The reader can be configured to add keystrokes before or after the card's data. The serial version, available in RS-232, Ethernet, or USB Virtual COM, delivers the card's data in ASCII.

ID Series



Prox Bracket Kit



ProxCard II HID 1326 Clamshell Card

Applications

- PC/LAN access control
- Employee identification
- Time and attendance
- PLC and embedded controllers
- Hoteling, meeting attendance, visitor management
- Secure printing
- Point of sale

Easy Interface:

Since there is no software deployed, the plug-n-play reader designs are truly easy to integrate into your existing application. The USB models connect directly to USB ports and send data as keystrokes. The RS-232 model connects to a serial port and sends data as ASCII. The Ethernet model comes with free software to redirect the IP address to virtual COM port on Windows® PCs. The USB Virtual COM model emulates a virtual serial device.

Compatibility:

Compatible with Windows CE®, Windows 2000®, Windows XP®, Windows Vista®, Windows 7®, Macintosh®, the Solaris™ operating system, Sun Ray™ thin clients, and Linux. (Free configuration software requires Windows® operating system.)

Information and Productivity

Eliminates errors associated with individual identification.

Versatile Mounting Options

The standard housing can be placed anywhere on the desktop. Featuring an articulated cable, it can easily be mounted on kiosks, monitors, time clocks, and more. Optional base and mounting brackets expand placement options. Other form factors allow for easy, unobtrusive placement.

Ports/Styles

USB, USB Dongle Reader, RS-232, PCMCIA, Ethernet, Keyboard, OEM bare board

Desktop Unit Colors

- Black & Pearl

Supported Cards—Partial List

- HID iclass
- ISO14443A
- ISO15693
- Legic
- Sony FeliCa
- Xceed ID

Typical Maximum Read Range

- 2.0" – 4.0" (5.0 – 10.0 cm) with PVC ID cards
- 1.0" – 1.5" (2.5 – 3.8 cm) with labels or tags
- 1.0" – 2.0" (2.5 – 5.0 cm) with MIFARE card

Desktop

Dimensions: 3.4" x 2" x 0.6"

Desktop Weight 0.45 lbs (204g)

Power Supply and Interface

USB self-powered; RS-232 model; 5V supplied by PS2. Keyboard pass-thru connector

Indicators Tri-state LED, beeper

Transmit frequency 13.56 kHz

Operating Temperature Range

-22° to 150°F (-30° to 65°C)

Operating Humidity Range

5% to 95% relative humidity, non-condensing

Storage temperature range

-40° to 185°F (-40° to 85°C)

Interface RS-232 DB9, USB or Ethernet

Certifications

FCC, United States; CE Mark Europe, C-TICK, RoHS, Industry Canada



ALPHA TOUCH SCREEN

The Alpha touch screen controller (Alpha) works with leading market software products to control document output in office, school, and library environments. Just plug the Alpha into your network to communicate with your central accounts database, which tracks activity at all your office machines.

Patrons can log-in using an account name or number or swipe a number of card options for access. This enables the copier or MFD and charges the job to the patron's account.

Alpha Touch Screen



Network

- Integrated 2 port 10/100 Ethernet
- DHCP, DNS Server compliant
- Remote upgrade utility

Interfaces

- 320 x 240 touch screen pane
- Copier interface attaches to all major equipment brands
- Optional input reader devices include Mifare®, Prox® and iClass® from HID and a variety of barcode symbologies
- Combination reader options include ABA card and barcode, ABA card and Mifare®, ABA card and HID and also barcode with various Mifare or HID proximity readers

Options

- Barcode scanner mounting
- Sturdy pedestal, includes neat cable routing system to prevent damage

Benefits

- Touch screen display enables easy access to print jobs and a better user interface
- Debug mode allows screen contrast adjustment, copier interface test, PING to server and card reader test
- Robust ABS case is ideal for public access environment
- One low cost device enables tracking of color, duplex and different media size output from most modern multi function devices
- PCase design prevents access to the cables in the back of the unit
- The Alpha eliminates proprietary debit cards and enables an online, accounts-based system that automatically tracks activity at all output devices in a single database
- Unlike direct printing or debit card solutions, users pick up print jobs wherever and whenever they choose - The printing follows the user!
- With our remote access, your equipment can be updated easily and with no disruption to you.

RSX1000 ONLINE ACCOUNT REVALUE STATION

A feature-rich, online revalue station designed to streamline money management in an account-based environment. It's wide-ranging versatility allows users to add value to copy cards or online accounts, quickly and securely. The RSX1000 offers a gamut of cashless and currency options and eliminates staff intervention.



RSX1000



Size and weight

- Height: 60"
- Width: 20"
- Depth: 23"
- Weight: 175 lbs

Display

- 21.5" Widescreen Optical TouchScreen monitor
- Full HD 1080p display (1920 x 1080p)

Computer

- Windows 7 Professional PC

Internal Components (optional)

- Credit Card ePort terminal
- Mag-stripe swipe reader
- Proximity Reader/Scanner
- Barcode Reader/Scanner
- Coinco bill stacker: \$1's, \$5's, \$10's & \$20's
- Custom vending microcontroller
- Internal stored value card reader
- Card Dispenser

Capacities

- 4GB2 Dual Channel DDR3 SDRAM at 1333MHz
- 320GB3 SATA hard drive (7200RPM)
- Bills: 500
- Cards: 290

Power

- 120VAC

External buttons and controls

- Intuitive 21.5" Widescreen Optical TouchScreen monitor

Sensors

- Auto detect card level
- \$ Bill acceptor level

Print system requirements

- Compatible with multiple pay-for-print software solutions
- Print Release Station configuration

Environments

- University Library
- Public Library
- Court House
- Business Centers
- Corporate setting

Languages

- Supports English

In the Box

- RSX1000 Series Revalue Station
- Power Supply
- Keys
- Lockdown anchor kit
- Setup Instructions

Configuration Options

- RSX1000-SW: Revalues ABA Mag-stripe with \$ bills
- RSX1000CC-SW: Revalues ABA Mag-stripe with \$ bills and credit cards
- RSX1000-Prox: Revalues Proximity cards with \$ bills
- RSX1000CC-Prox: Revalues Proximity cards with \$ bills and credit cards
- RSX1000-Bar: Revalues Barcoded cards with \$ bills
- RSX1000CC-Bar: Revalues Barcoded cards with \$ bills and credit cards

Stands & Accessories

- Signage banner

Assembly & Warranty

- Made in USA
- Standard 2 Year Warranty
- Extended Warranty (optional)

VIRTUAL CASH CONTROLLER

The Virtual Cash Controller (VCC) works with leading market software products to control document output in office, school, and library environments. Just plug the VCC into your network to communicate with your central accounts database, which tracks activity at all your office machines. Patrons can key their account number into the VCC or swipe any ABA magnetic stripe card (student ID, library card, grocery store card) and scan a proximity card or barcode. This enables the copier or other device and charges the job to the patron's account.



Virtual Cash Controller



Network

- Integrated 2 port 10/100 Ethernet
- DHCP, DNS Server compliant
- Remote upgrade utility

Interfaces

- 16 key numeric keypad
- ABA track 2 Magnetic card reader
- Copier interface attaches to all major equipment brands
- 2 x 20 easy to read liquid crystal display
- Optional input reader devices include Mifare®, Prox® and iClass® from HID and a variety of barcode symbologies
- Combination reader options include ABA card and barcode, ABA card and Mifare®, ABA card and HID and also barcode with various Mifare or HID proximity reader

Options

- Wall mount bracket
- Sturdy pedestal, includes neat cable routing system to prevent damage
- Alpha numeric overlay for name based login Wall mount bracket
- Sturdy pedestal, includes neat cable routing system to prevent damage
- Alpha numeric overlay for name-based login

Benefits

- Robust ABS case is ideal for public access environment
- One low cost device enables tracking of color, duplex and different media size output from most modern multi function devices
- Patrons are granted secure access to unattended devices at your facility.
- The VCC helps eliminate proprietary debit cards and migrate to an online, accounts-based system that automatically tracks activity at all your printers and copiers in a single database.
- Unlike direct printing or debit card solutions, users can pick up their print jobs wherever and whenever they choose—in a different building, after class, on their way home. The printing follows the user!
- You don't need to wait for product upgrades to arrive—with our remote access, your equipment can be updated easily and with no disruption to you.



COPYMATE CONTROLLER

The CopyMate series of controllers provide simple and cost effective control of copiers and stencil duplicators. Users simply enter an authorized code or account number and the CopyMate allows operation of the copier and records the total amount of copies made, saving the information for later retrieval.

CopyMate Controller



Size and weight

- Height: 2.0"
- Width: 14.5"
- Depth: 6.5"
- Weight: 6lbs

Display

- 2x16 backlit LCD
- Alphanumeric

Processor

- CopyMate control board
- Single price: tracks b&w copies

Capacities

- Reads ABA Stripe cards, tack 1 & 2

Power

- 12VAC

External buttons and controls

- 16 digit numeric keypad
- Add, Enter, Clear, Delete

Copy system requirements

- Copier interface: H10-"Copier OEM"

Environments

- Law Firm
- K-12 Public School
- Architecture Firm

Languages

- Supports English

In the Box

- CopyMate Controller
- Power Supply
- Setup Instructions

Configuration Options

- CopyMate900: stores up to 900 account codes
- CopyMate2500: stores up to 2500 account codes
- CopyMate SW2500: accepts cards and account codes
- CopyMate SD: designed for stencil duplicators, stores 2000 accounts

Stands & Accessories

- CD Extractor Software
- MB2500 Bracket
- Transfer cable: copies data from one unit to another

Assembly & Warranty

- Made in USA
- Standard 2 Year Warranty
- Extended Warranty (optional)

REMOTE E-COUNTER

Looking to control copiers from the checkout counter or service desk? The Remote E-Counter is the most practical solution on the market! Enable the copier with the on/off toggle switch, and watch the counter as it increases with each copy. Upon checkout, simply push the reset button and you are ready for your next customer.

Dimensions

1.5" x 3" x 1.5"

Shipping Weight

2.5 lbs.

Power Requirements

5VAC or 25VAC





SECURITY SOLUTIONS

7000-EFS

The 7000EFS is a secure base stand for various models of coin-ops. The hardened steel base elevates your coin-op to a user-friendly height. The 7000EFS also works in conjunction with the 7000LP, sliding up through the bottom of the locking plate; This tamper-proof solution makes it a pleasurable and secure experience for the end-user.

7000-lp

The 7000LP is a locking security plate made of hardened steel and designed to slip over the 7000-EFS secure base stand.

ACD-114

Paper tray lock fits almost all copiers and MFPs. Protect against unauthorized access to your paper stock with the Paper Drawer Tray Lock.

7000-lefs

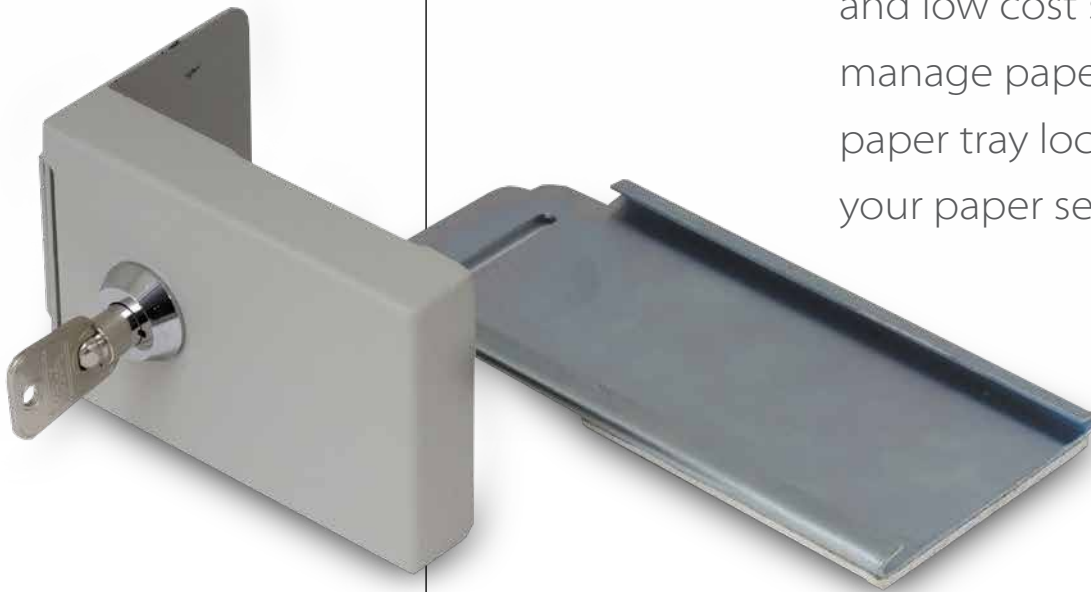
The 7000-LEFS is a low cost, easily installed coin-op security solution. It is designed for both left and right side mounts, ensuring compatibility with most copiers.

ProxBracket Kit

"L" shaped universal bracket to attach a Prox reader to a copier. The kit comes with mounting screws, adhesive and a cord management system.

ACDL114 PAPER DRAWER LOCK

The ACDL-114 Paper tray lock fits most all copiers and MFPs and protects against unauthorized access to your paper stock. The Paper Drawer Lock is a convenient and low cost solution to paper tray security. Do you manage paper stock for multiple copiers? Multiple paper tray locks can be keyed alike – one key for all your paper security needs.

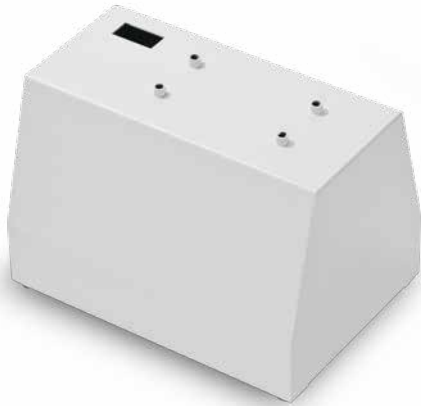


Dimensions | 6" x 6"

Shipping Weight | 3lbs.

No tools are required for installation

PEDESTALS



7000 EFS for EX2000 Series

For EZVend and EX2000

Height: 9"

Weight: 14lbs



2015 PD Pedestal for 1500 & 2000

For EZVend and EX2000

Height: 12"

Weight: 17lbs



3000 PD Pedestal for 3180 & 3080

Height: 28"

Weight: 24lbs

SIDEKICK PEDESTAL

The CopyMate® Sidekick provides a sleek and secure mount for your ACDI device. If you're concerned about compatibility, don't be; this stand is compatible with all ACDI Readers and Account Management devices.

These mounts are engineered in compliance with the American Disabilities Act and are capable of being wall-mounted. Cables are completely hidden from view for a clean trouble-free look.



RSX1000

The TSPC-1105 and RSXStand provide a sleek and secure mount for your RSX1000 devices.

These mounts are engineered in compliance with the American Disabilities Act and are capable of being wall-mounted. Cables are completely hidden from view for a clean trouble-free look.

TSPC-1105

- Preloaded Touch Screen PC, Pay and Release Station

RSXStand

- Stand for Touch Screen PC; TSPC-1105



ACDI | Warranty

TERMS

Net 30: In order to receive Net 30 terms a credit application must be filled out. A late fee of 1.5% will be applied monthly if payment has not been received within the time frame of this term.

Cash On Delivery (C.O.D.): Total cost paid upon delivery of order. Ask for C.O.D. total. New customers will be asked to pay C.O.D. or with a credit card on their first purchase order.

Installation Material: Each unit includes a service manual and installation instructions. This material will normally answer any questions concerning the operation of the unit. If the service technician needs help, it is only a phone call away.

3% CWO on Web.

TOLL-FREE SUPPORT

ACDI was founded on the belief that we must be responsive and efficient in order to be competitive. We know that your business cannot be competitive if your products have excessive downtime. We provide a toll-free technical support line in order to help make your installations simple and cost effective. ACDI technicians will help with all phases from pre-installation advice to converting our equipment to an upgraded copier.

WARRANTY AND ALTERATION/ATTACHMENT DISCLAIMER

All products manufactured by Access Control Devices, Inc. (ACDI) carry a full two-year warranty. If our equipment fails during the two-year warranty due to defects in material or workmanship, ACDI will repair or replace the defective part. ACDI provides a toll-free support line for your convenience. Technicians may call this number for support regardless of your warranty status. ACDI technicians will provide troubleshooting guidelines over the phone and arrange for replacement parts if necessary. Replacement parts will be considered sales if the defective parts are not returned within 30 days.

ACDI | Warranty

An alteration is defined as any change to a copier, computer, laser printer, reader-printer or other device that deviates from the original physical, mechanical, electrical or electronic interconnection of a machine of ACDI's manufacturer to any other device that is sold, serviced, supplied or installed by the original equipment manufacturer ("OEM") of the machine.

An alteration to a machine may be made by a purchaser or lessee of ACDI's products with prior written notice by the customer to the OEM's supplier and service organization. This should be done to ensure that continued service support will be provided if an alteration is made to the machine. An attachment can be made to virtually any machine via an OEM approved attachment means. The correct attachment means should be confirmed in writing with the OEM machine supplier.

The customer is responsible for making any such alteration or attachment using an ACDI product or device, for its use and the results obtained and to pay all charges related to the alteration or attachment that would affect "Maintenance Service" by the OEM supplier and service organization. The customer is responsible for removal of any alteration or attachment and to restore a rented or leased machine to its normal, unaltered condition prior to its return to the rental or lease supplier, or upon notice from the OEM supplier and service organization that the alteration or attachment creates a safety hazard or renders maintenance of the machine impractical. See alteration attachment disclaimer for additional terms and conditions. ****Extended warranty available upon request.

NOTE

- Within 30 days of purchase, any repaired unit/part will be shipped overnight at ACDI's expense.
- Items 31-90 days from date of purchase - any repaired unit/part will be shipped ground track at ACDI's expense.
- Items 91 days or more from date of purchase - any repaired unit/part will be shipped ground track at customer's expense.

The customer assumes responsibility to the OEM supplier and service organization for all charges for maintenance and other service activities, or for loss of or damage to a machine, caused by: 1) use of ACDI attachments, 2) alterations as defined above.

It is understood that ACDI shall not be liable for any incidental or consequential damages. ACDI's liability and the customer's exclusive remedy for any cause of action arising from the use of ACDI of the purchase price for the goods, with respect to which damages are claimed. All claims of whatever nature shall be deemed waived unless made in writing within (30) days of the customer's receipt of the goods.

The background of the page is an abstract composition of overlapping, semi-transparent blue geometric shapes, primarily triangles and polygons, creating a sense of depth and movement. The colors range from deep navy blue to a very light, almost white, sky blue.

Access Control Devices Incorporated

7428 Lindsey Road | Little Rock AR 72206

Phone: 800.990.2234 | Fax: 501.664.8085