

WHIRLPOOL ELECTRICAL APPLIANCES COMPANY LIMITED

SERVICE INFO MANUAL

MODEL: JQ280/IX/AU

SKU No.: 8587 280 53791

DATE: 2014.02.27

REVISION: 0

CONTENTS

1. INTRODUCTION SAFETY
2. TECHNICAL DATA
3. WIRING DIAGRAM
4. EXPLODED VIEW
5. SPARE PART LIST

1. INTRODUCTION SAFETY

INTRODUCTION

Before leaving the factory each oven is carefully checked.
It must, however, be installed and used correctly.

Despite all the steps taken to make the oven safe, the safety is dependent on the correct installation and the fact the user understands how to use and maintain the oven.

The information in this section should be used as a reminder that the oven is safe and that anyone who uses it must first read the instructions for use in order to be able to use the oven correctly and obtain best results.

SAFETY

To avoid injury to yourself and damage to the appliance always work to the following rules when servicing an oven.

Always disconnect the plug from the mains before starting work.

If there is no plug switch off the electric supply at the control box.

When you have finished servicing an oven before you reconnect it to the mains, make sure that:

- all the internal connections are correct
 - the wires are insulated and not touching the door or the cabinet or anything sharp
 - all the earth connections are electrically and mechanically sound
 - do not modify or anyway interfere with the safety devices built-in to the oven
- make sure that each replacement part you use conforms to the manufacturer's specifications

Do not start a repair if you have any doubt as to your ability to complete it.

CAUTION – MICROWAVE RADIATION

PERSONNEL SHOULD NOT BE EXPOSED TO THE MICROWAVE ENERGY WHICH MAY RADIATE FROM THE MAGNETRON, WAVEGUIDE OR ANTENNA IF THEY ARE IMPROPERLY USED OR CONNECTED. ALL INPUT AND OUTPUT MICROWAVE CONNECTIONS, WAVEGUIDES, FLANGES AND GASKETS MUST BE SECURE.

NEVER OPERATE THE DEVICE WITHOUT A MICROWAVE ENERGY ABSORBING LOAD ATTACHED.

NEVER LOOK INTO AN OPEN WAVEGUIDE OR ANTENNA WHILE THE DEVICE IS ENERGIZED.

NEVER OPERATE AN OVEN WITH CABINET OFF WITHOUT MEASURING THE MICROWAVE LEAKAGE AROUND MAGNETRON AND VISIBLE MICROWAVE CONNECTIONS (WELDING JOINTS).

Do not operate the oven if the following conditions exist:

- the door does not close firmly against the door support because of the door being warped or the hinged damaged.
- the door trims or seals are damaged.
- if there is any visible damage to the oven.
- if the door does not close properly.

Avoid operating the oven if known components in the interlock system, oven door or microwave generating assemble are known defective. They must be replaced.

WARNING – HIGH VOLTAGE

IT IS POSSIBLE TO COME IN CONTACT WITH LETHAL HIGH VOLTAGE WHEN WORKING WITH HV TRANSFORMER, HV CAPACITOR AND MAGNETRON. THEREFORE NEVER TRY TO MEASURE THE HIGH VOLTAGE. ALWAYS TAKE UTMOST CARE WHEN PERFORMING ELECTRIC MEASUREMENTS INSIDE THE OVEN.

2. TECHNICAL DATA

Dimensions of cabinet

Height	333	mm
Width	548	mm
Depth	525	mm

Dimensions of cavity

Height	225	mm
Width	353	mm
Depth	340	mm
Cavity volume	27	L
Turntable diameter	310	mm

Weight

Net	21.2	kg
Gross	24.9	kg

Electrical

Voltage	240	V
Frequency	50	Hz

Power

Output power MW	950	W
Grill	1050	W
Forced Air	1350	W
Input power MW	2100	W

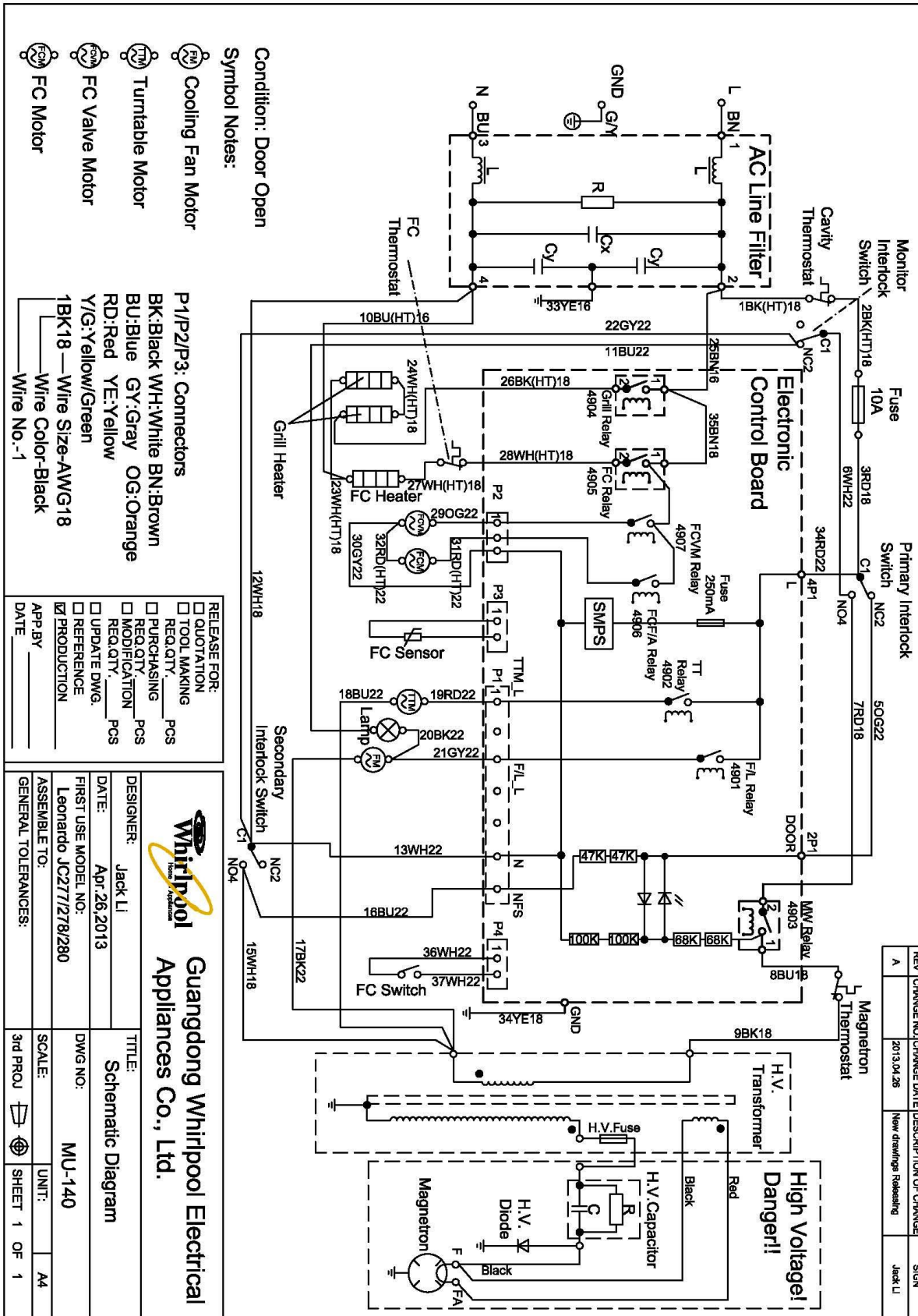
Power level

950W
750W
650W
500W
350W
160W
90W

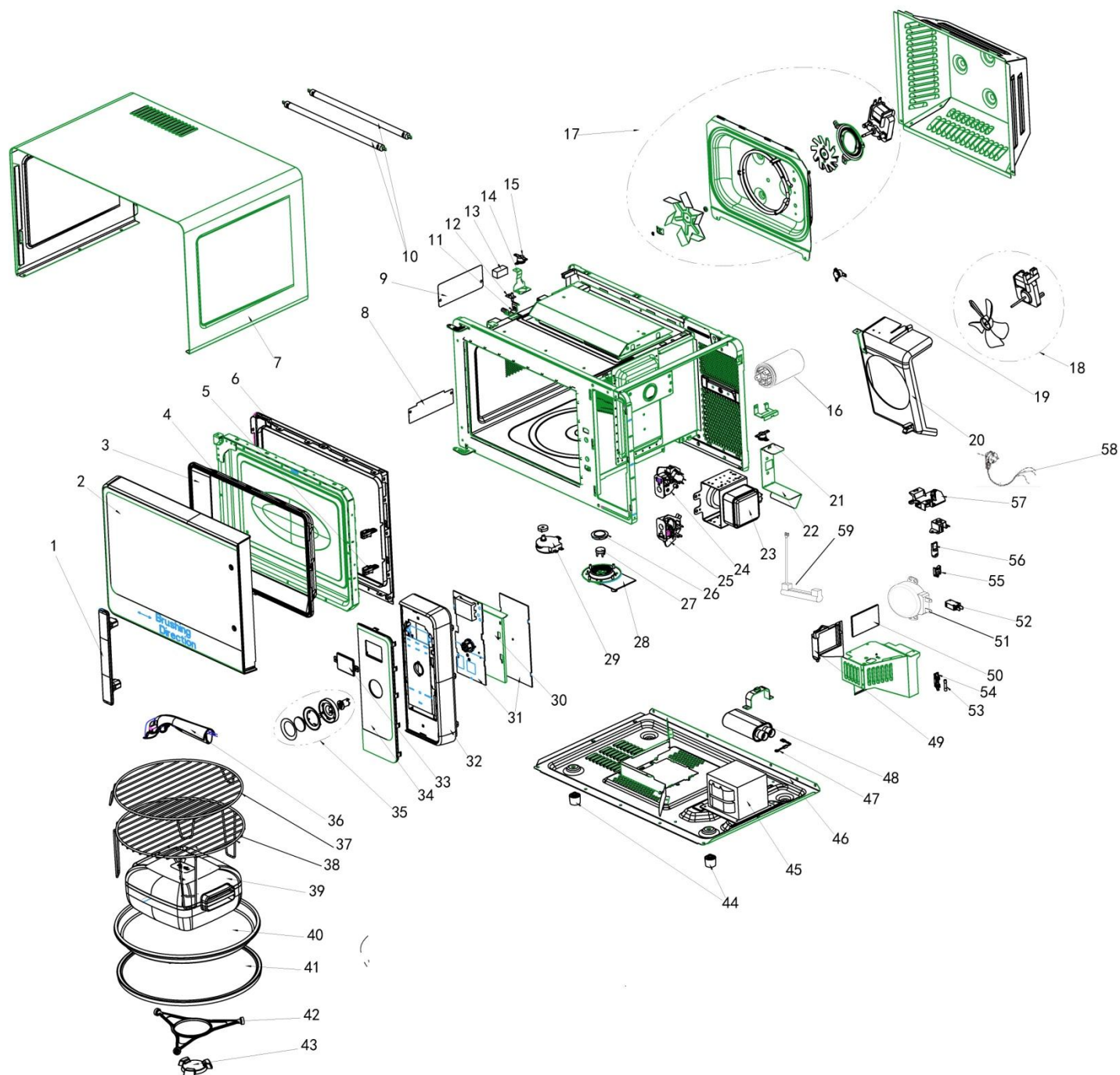
Timer

90 min

3. WIRING DIAGRAM



4. EXPLODED VIEW



5. SPARE PART LIST

Item no.	Description	Service part no.	Item no.	Description	Service part no.
1	Handle assy	W10692732	31	UIB and ACU PCBA assy	W10540703
2	Door frame outer assy (including door glass)	W10673343	32	Control panel	W10561354
3	Steam protection plate	W10484027	33	Lens	W10558143
4	Metal door assy (including inner glass)	W10560675	34	Panel cover assy (with touch PCBA)	W10691564
5	Door hook	W10495333	35	Knob assy	W10692729
6	Door inner frame	W10484046	36	Handle to crisp plate	W10461761
7	Outer wrapping	W10505717	37	Leonardo FC Grid	W10440082
8	Mica plate	W10538878	38	Grill grid(27L)	W10440081
9	Mica plate	461965700901	39	Steamer	W10660054
10	Quartz heater	W10510210	40	Crisp plate	461968977481
11	Temperature sensor clip	461964413481	41	Glass tray	461965690701
12	FC temperature sensor	W10543634	42	TT ring Trad Chef	461964191283
13	Sponge	461965701271	43	TT driver Trad Chef	461964208731
14	TCO holder	W10538647	44	Oven foot	461964139202
15	Cavity Thermostat 165°C	461964800271	45	H.V Transformer (package)	W10615912
16	Filter	461964885341	46	Bottom plate	W10481580
17	FC assy	W10482576	47	High Voltage Diode	W10492278
18	Cooling Fan motor and Fan wheel assy	W10613013	48	HV capacitor	461964655155
19	FC thermostat 165°C	461964800131	49	Valve door	W10524090
20	Fan housing	W10482579	50	Lamp glass	461965696951
21	Magnetron thermostat 130°C	W10479652	51	TT motor for valve	W10466418
22	Magnetron air guide	W10566565	52	Microwave switch for valve	461964833701
23	Magnetron (package)	461965733151	53	Main Fuse	W10439111
24	Interlock assy upper	W10692741	54	FUSE HOLDER	461964882181
25	Interlock assy lower	W10692743	55	Wire saddle clip	461964153021
26	silicon rubber	W10483113	56	Halogen Lamp	W10439824
27	weight sensor button	W10483120	57	Valve switch holder	W10537775
28	Weight Sensor assembly	W10558145	58	Power cord	W10646373
29	TT motor	W10466418	59	HV fuse	W10523675
30	Fire protection plate	W10484025			

Revision Log

Revision	Description	Revised by	Revision Date
0	Original Revision	Carrie Ou	2014.2.27