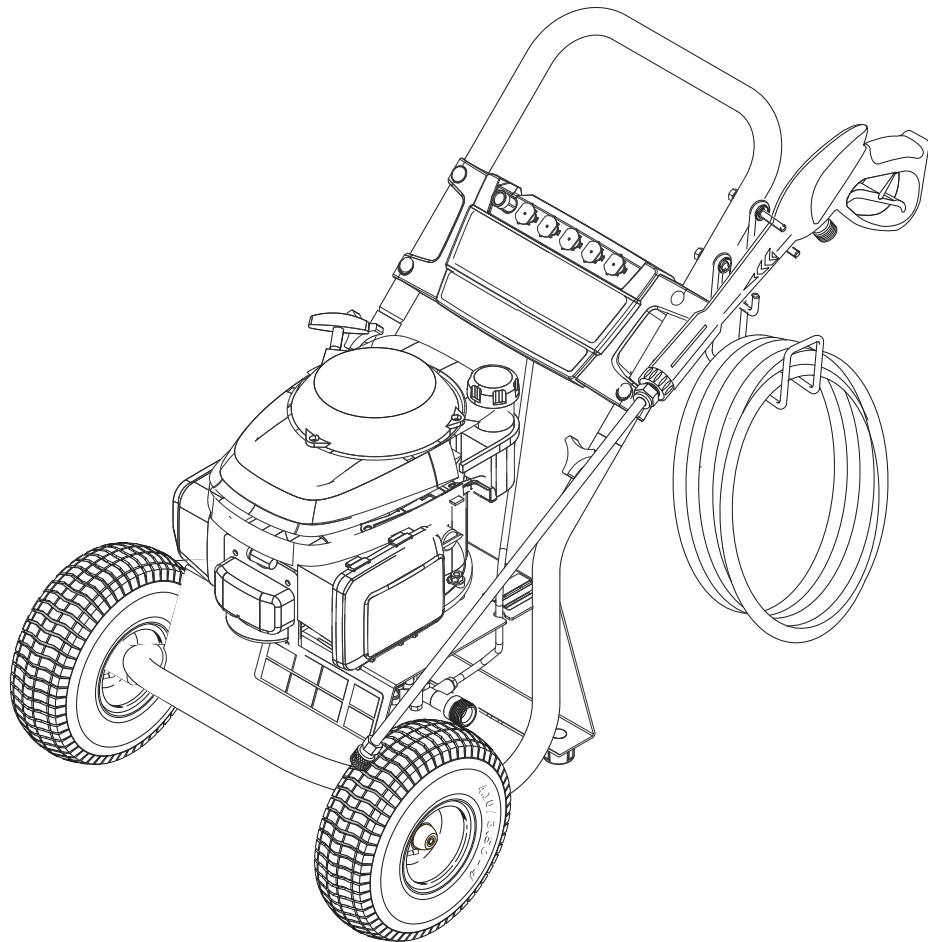


SERVICE MANUAL



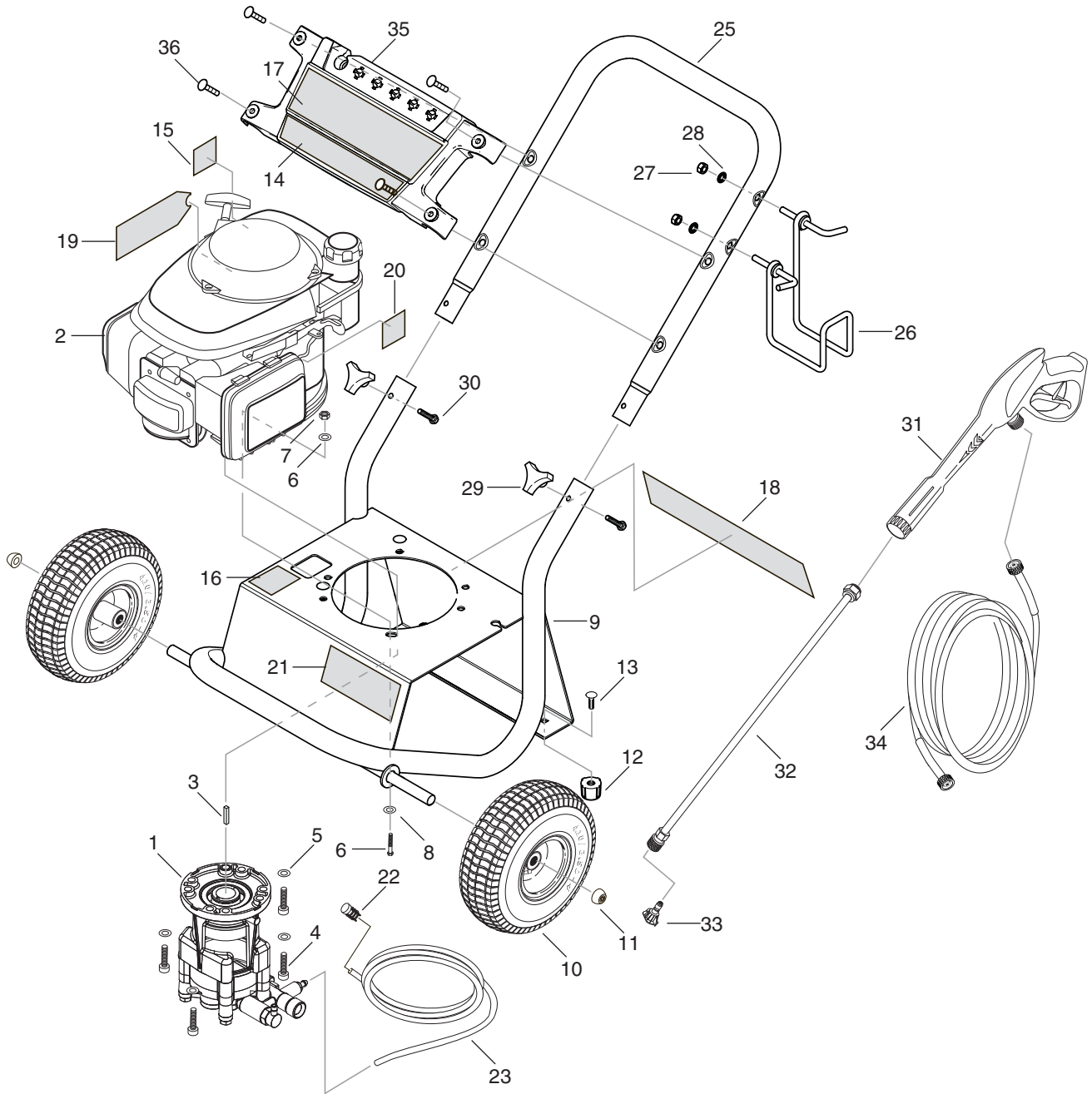
MODEL #
RG-232637

ORDER #
1.107-235.0

CONTENTS

Exploded View	4
Exploded View Parts List	5
Legacy Axial Pump	6-7
Troubleshooting	8
Preventive Maintenance	9
Oil Change Record	10

EXPLODED VIEW



EXPLODED VIEW PARTS LIST

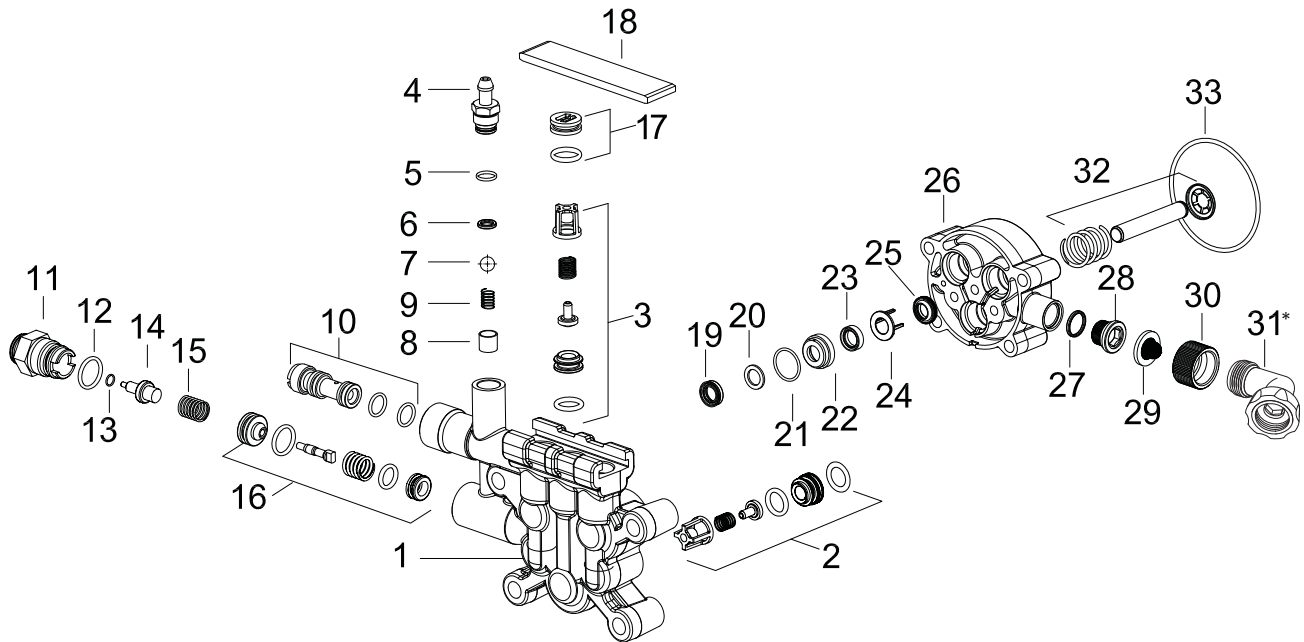
ITEM	PART NO.	DESCRIPTION	QTY
1	8.920-004.0	Pump, Legacy Axial 2.6 GPM 3000PSI	1
2	9.194-077.0	Engine Honda GC160	1
3	9.194-881.0	Key SQR 3/16" x 1 47/64"	1
4	9.196-033.0	5/16-24 UNF X 1.75 Socket Head Cap Screw	4
5	9.802-813.0	Washer, 5/16" Split Ring Lock, Zinc	4
6	9.186-010.0	5/16-18 X 1-1/2 GR 5 HHCS Zinc	4
7	9.802-776.0	Nut, 5/16-18, ESNA	4
8	8.718-980.0	Washer, 5/16" Flat, SAE (780452)	8
9	9.115-099.0	Powder Coated-P1 Frame Black Wrinkle	1
10	9.802-270.0	Wheel & Tire Assy, 10" Steel Rim W/Tube	2
11	9.182-506.0	Cap Black Plastic, 5/8"	2
12	9.183-405.0	Rubber Dampener 5/16"-18	2
13	9.196-308.0	5/16-18 X 1/2 Carriage Bolt	2
14	8.753-553.0	Label, Rate Specs, Low	1
15	8.751-096.0	Label, Regulation 4442.6	1
16	9.801-587.0	Rating Plate, RG-232637	1
17	8.750-881.0	Shark, Label Name Plate	1

ITEM	PART NO.	DESCRIPTION	QTY
18	8.783-035.0	Label, Operation Warnings Trilingual	1
19	9.138-313.0	Caution Engine Oil Tag	1
20	9.138-373.0	Open/Closed Sticker-(GCV 160)	1
21	9.138-377.0	Quick Start Instruction Guide Sticker	1
22	5.731-652.0	Filter with weight	1
23	6.388-216.0	Hose DN 5	1
24	9.180-004.0	▲ Motor Oil, SAE-10W 30, 20 oz.	
25	9.140-153.0	Powder Coated Handle	1
26	9.142-015.0	Hanger LT Side	1
27	9.802-786.0	Nut, 5/16, Hex, NC	2
28	9.198-003.0	5/16 Internal L/W .332 ID X .620	2
29	8.767-003.0	1/4-20 Star Knob	2
30	9.196-307.0	1/4-20 x 1-1/2 GR 2 Hex Bolt	2
31	9.112-012.0	AI Bit 101 Trigger Gun	1
32	9.112-533.0	Lance-AL Quick Connect-Male 3000 psi	1
33	8.751-356.0	Kit, Nozzle (035)	1
	8.712-337.0	▲Nozzle, 0003, Red	1
	8.712-338.0	▲Nozzle, 0015, Yellow	1
	8.712-339.0	▲Nozzle, 0025, Green	1
	8.712-340.0	▲Nozzle, 0040, White	1
	8.712-398.0	▲Nozzle, Black, Soaper	1
34	8.753-423.0	Hose, HP 5ft, 3600PSI M22	1
35	9.134-022.0	Name plate	1
36	9.196-049.0	Nylon Rivet	1

▲ Not Shown

PUMP EXPLODED VIEW AND PARTS LIST

8.920-004.0



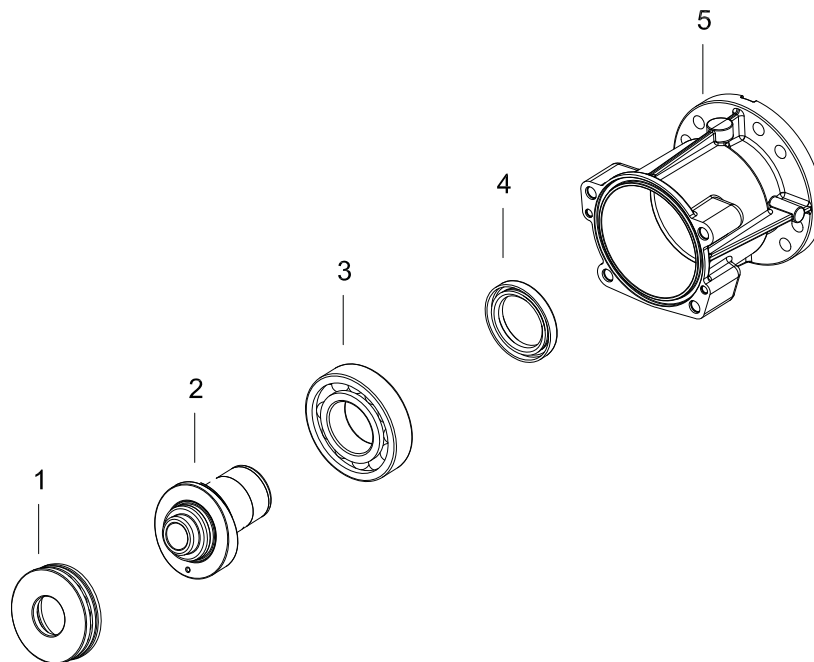
ITEM	PART #	DESCRIPTION	QTY
1	8.762-010.0	Cylinder Head	1
2	9.175-004.0	Valve Assy Horizontal	3
3	2.884-916.0	Valve Complete (Kit 3)	1
4	5.443-448.0	Nipple Chemistry	1
5	6.362-451.0	O-Ring Seal 8.0 x 1.0	1
6	6.362-175.0	O-Ring Seal, 5.28 x 1.78	1
7	7.401-909.0	Sphere 7 G40 - 1.4401	1
8	5.110-714.0	Sleeve	1
9	5.332-258.0	Helical Spring	1
10	9.139-372.0	Nozzle, INS 020/021 Pump	1
11	9.184-018.0	Outlet-Thermal Valve	1
12	6.362-480.0	O-Ring Seal, 12.42 x 1.78	1
13	7.362-507.0	O-Ring Seal 8 x 2 NBR 90	1
14	6.413-403.0	Thermo Valve Tin Coated	1

ITEM	PART #	DESCRIPTION	QTY
15	5.332-290.0	Helical Spring	1
16	9.175-005.0	Unloader Assembly	1
17	4.132-007.0	Drain Plug Replacement	1
18	5.003-062.0	Plate	1
19	9.177-301.0	Hich Pressure Seal	3
20	9.177-310.0	Back Ring	3
21	6.362-833.0	O-Ring Seal 12.5 x 1.73	3
22	9.155-011.0	Housing Low Pressure Seal	3
23	6.363-058.0	Grooved Ring	3
24	9.134-016.0	Spacer	3
25	6.365-393.0	Oil Sealing 12.20x4/6	3
26	9.133-007.0	Piston Guide	1
27	6.362-390.0	O-Ring Seal 15.6 x 1.8	1
28	9.134-019.0	Male Adapter	1
29	9.181-005.0	Filter Seal	1
30	9.155-013.0	Female House Conn	1
31	8.751-121.0	◆Gooseneck, Hose Adapter (For pump guard or Filters)	1
32	9.139-370.0	Spare Part List, Piston	1
33	6.362-471.0	O-Ring Seal 80.0x3.0 NBR70	1

◆Not Included

PUMP EXPLODED VIEW PARTS LIST (CONT)

8.920-004.0 Housing View



ITEM	PART #	DESCRIPTION	QTY
1	9.166-016.0	Grooved Ball Bearing	1
2	9.135-018.0	Swash Plate Hor.	1
3	9.165-356.0	Ball Bearing No 6207	1
4	9.177-314.0	Radial Seal 35 x 52 x 7	1
5	9.135-016.0	Oil Housing	1

TROUBLESHOOTING

PROBLEM	POSSIBLE CAUSE	SOLUTION
ENGINE OPERATES FOR 15 MINUTES THEN STOPS	Not enough gas or engine oil	Fill tank with gas. Check oil level.
	Vapor lock developed by heat of day	Keep gas tank full to avoid vapor locking.
	Obstruction in fuel filter	Clean or replace fuel filter.
ENGINE LACKS POWER	Dirty air filter	Replace air filter.
ENGINE FALTERS	Choke is opened too soon	Move choke to halfway position until engine runs smoothly.
WATER DRIPPING FROM UNDER PUMP	Piston packing worn	Call local distributor.
	O-Ring plunger retainer worn	Call local distributor.
	Cracked piston	Call local distributor.
OIL DRIPPING	Oil seal worn or damaged	Call local distributor.
WATER LEAKING FROM PUMP PROTECTOR	Spray gun closed with machine running 5 minutes or longer	Open spray gun or turn off machine.
	Excess water supply pressure	Place a pressure regulator at end of 50' garden hose.
NO DETERGENT	Detergent suction tube not properly connected to machine	Check connection.
	Detergent is too thick	Dilute detergent. For best results, use manufacturers detergent.
	Detergent filter valve is at lowest setting	Set detergent filter valve to a higher setting.
	Filter on detergent suction tube is clogged	Run warm water through filter to remove debris.
	Damaged or clogged detergent suction tube	Remove obstruction or replace detergent suction tube.
	A high pressure nozzle is attached.	Replace with black detergent nozzle.
	Discharge nozzle is obstructed	Blow out or remove debris with fine needle.
GARDEN HOSE CONNECTION LEAKS	Loose fittings	Tighten fittings.
	Missing/worn rubber washer	Insert new washer.
SPRAY WAND LEAKS	Spray wand not properly attached	Slide the spray wand into the gun. Turn the wand collar clockwise onto the spray gun threads until tight.
	Broken o-ring	Call local distributor and order an o-ring.
PUMP IS NOISY	Pump is sucking air	Check that hoses and fittings are air tight. Turn off machine and purge pump by squeezing trigger gun until a steady flow of water emerges through nozzle.

PREVENTATIVE MAINTENANCE

This pressure washer was produced with the best available materials and quality craftsmanship. However, you as the owner have certain responsibilities for the correct care of the equipment. Attention to regular preventative maintenance procedures will assist in preserving the performance of your equipment. Contact your dealer for maintenance. Regular preventative maintenance will add many hours to the life of your pressure washer. Perform maintenance more often under severe conditions. Check pump oil and engine oil level before first use of your new pressure washer.

MAINTENANCE SCHEDULE		
Engine Oil	Inspect	Daily
	Change	First month or 20 hours. Every 100 hours or every 6 months after first month
	Filter	Every 50 hours
Air Cleaner/Filter	Inspect	Every 50 hours
	Clean	Monthly
Engine Fuel Filter		500 hours or 6 months
Spark Plug Maintenance		300 hours or annually
Clean Fuel Tank(s)		Annually
Replace Fuel Lines		Annually
Replace High Pressure Nozzle		Every 6 months
Replace Quick Connects/O-Rings		Annually/As needed
Clean Water Screen/Filter		Weekly
Replace HP Hose		Annually (if there are any signs of wear)

OIL CHANGE RECORD

Check pump oil and engine oil level before first use of your new pressure washer.

Date Oil Changed Month/Day/Year	Estimated Operating Hours Since Last Oil Change

Date Oil Changed Month/Day/Year	Estimated Operating Hours Since Last Oil Change

Form #9.801-589.0 • RG-232637 • Revised 06/14

Printed in U.S.A. or Mexico