

OUTDOOR POWER EQUIPMENT

CONQUEROUTDOORS



 **YAMAHA**
Revs Your Heart



CONQUER OUTDOORS

IT TAKES SOMETHING SPECIAL TO EARN THE NAME YAMAHA. YOU HAVE TO BE TOUGH, DURABLE, POWERFUL AND PREPARED TO SHOW UP EVERY DAY; WHETHER IT'S FOR WORK OR PLAY. AND WHEN YOU BEAR THE YAMAHA NAME, YOU DON'T JUST SHOW UP FOR THE GAME, YOU SHOW UP TO WIN! WITH NEW, REVISED PRICING, YAMAHA POWER PRODUCTS ARE NOW MORE AFFORDABLE THAN EVER.

FOR OVER 35 YEARS, YAMAHA HAS BEEN ONE OF THE MOST TRUSTED NAMES IN POWER EQUIPMENT. WE UNDERSTAND THE NEEDS OF PEOPLE JUST LIKE YOU, AND MAKE IT CONVENIENT TO PRODUCE POWER, WHENEVER AND WHEREVER YOU NEED IT.



3-YEAR LIMITED WARRANTY*
Yamaha offers a standard 3-year limited warranty on all generators. Standard. No extra fees. At Yamaha we stand behind our products, providing you peace of mind.

* 3-year limited warranty on all generators for personal or commercial use (except EF1000IS, 2-year for commercial). Water pumps and pressure washer receive 3-year warranty for personal use and 1-year for commercial. See dealer for details. Due to Yamaha's ongoing commitment to product improvement, we reserve the right to change without notice.

LEGEND OF ICONS

LOOK FOR THESE ICONS TO SEE THE FEATURES AND BENEFITS OF EACH MODEL.



INVERTER

Pure sine wave as clean as or cleaner than commercial power to operate products with built-in microcomputers.



ECONOMY CONTROL

On synchronous generators, the economy control switch (when turned on) lowers the engine rpm when there is no load to conserve fuel and reduce noise. When a load is applied, the engine rpm automatically returns to full rpm.

On inverters, the engine rpm is matched to the connected load (i.e. the higher the load, the higher the engine rpm). The Economy Control system is also known as Smart Throttle on inverters.



SMART THROTTLE

On inverters, the Smart Throttle system automatically varies engine rpm to precisely match the load, resulting in improved fuel economy and reduced noise.



4-STROKE OHV AIR-COOLED ENGINE

Precise valve actuation and heavy-duty design offer improved efficiency, increased reliability and quiet operation.



FUEL GAUGE

Allows the operator to monitor the fuel level without removing the filler cap.



BRUSHLESS ALTERNATOR

Reduces maintenance requirements, produces clean output and provides years of worry-free service.



AUTO DECOMPRESSION SYSTEM

Automatically reduces engine compression to provide a light recoil starter pull for effortless manual starting.



AC NON-FUSE THERMAL BREAKER

Protects the AC circuit in case of an overload for added durability and peace of mind.



OIL WATCH WARNING SYSTEM

Automatically shuts off engine when oil level is low and cannot be re-started until oil is added, preventing engine damage and costly repairs, while enhancing long-term durability.



AUTO CHOKE

Ensures easy engine starting regardless of the conditions.



POWER METER

Easy to read and indicates the amount of power being used and the amount available.



12-VOLT DC OUTPUT

Provides recharging capability for 12-volt batteries (charging cables included).



AC VOLTMETER

Provides easy-to-read voltage output for added convenience.



ELECTRIC START

Effortless starting.



RUGGED FULL ROLLOVER FRAME

For added durability, also doubles as carrying handles.



SILENT TYPE

An acoustically-designed sound reduction system, with moulded casing and noise-absorbing glass wool construction for quieter operation.



HOUR METER

Displays the amount of running time accumulated to indicate servicing or refuelling intervals.

BECAUSE WITH A GENERATOR, SIZE MATTERS

WHEN PURCHASING A GENERATOR, IT’S IMPORTANT THAT YOU SELECT ONE THAT’S CAPABLE OF MEETING YOUR ENERGY REQUIREMENTS. YOU MUST MATCH THE GENERATOR’S RATED OUTPUT TO THE MAXIMUM ANTICIPATED POWER TO BE USED. THIS SECTION WILL ASSIST YOU IN ESTIMATING YOUR POWER REQUIREMENTS.

DID YOU KNOW?

GENERATOR’S MAXIMUM AC OUTPUT

The maximum output of a Yamaha generator in wattage is represented by the model name of the generator. For example, our EF1000iS outputs a maximum of 1,000 watts. The generator can operate at its maximum output for approximately 20 to 30 minutes.

GENERATOR’S RATED AC OUTPUT

The rated, or running, output of a generator is the amount of current it can supply during continuous long-term operation. The rated output of a Yamaha generator is approximately 10% less than its maximum output. For example, our EF1000iS has a rated output of 900 watts.

GENERATOR’S SURGE OUTPUT

The starting requirements of devices utilizing electric motors, for example an air compressor, a sump pump, etc., may be significantly higher than the actual wattage required during continuous operation. This must be considered when estimating your power needs.

Most small universal motors such as drills, small saws, blenders, etc., require some additional current during start-up. In most cases, Yamaha generators will allow for a short period of “over generation” power (less than 3 seconds) to help with the initial start-up.

DETERMINING YOUR ENERGY NEEDS

If you are unaware of the power requirements of the devices you will be using with your Yamaha Generator, refer to the Application Chart on the opposite page. This guide will help you find the approximate amount of power you may need. For accurate power requirements, also check the appliances with a load tester (see Accessories on page 15) or contact the appliance manufacturer.

TAKE IT STEP-BY-STEP

Follow these steps when determining your energy needs:

1. Identify the wattage requirements for what you want to power. The power requirement for the tool or appliance can be found on its identification plate or in its Owner’s Manual. If the power requirement is given in amps, multiply the amps by volts to derive the required watts. Amps x Volts = Watts
2. Add up the required watts of all the tools and appliances you expect to operate simultaneously. Manufacturer’s devices may use more or less than the listed wattage. Add a 10% correction factor to your total to help overcome this uncertainty.
3. The total watts derived in step 2 is the size of Yamaha generator you need. For example, if you only intend to use a coffeemaker, a toaster and a 100-watt light bulb simultaneously, as shown in Sample Chart beside, the combined maximum power requirement would be 2,050 watts plus 10%. A generator that can produce a continuous rated output of 2,255 watts would be the EF2600 or EF2800i.

Sample Chart

DEVICE/ APPLICATION	RUNNING WATTAGE
Coffeemaker	850
Toaster	1,100
Light Bulb (100W)	100
10% Correction Factor	205
TOTAL	2,255



APPLICATION CHART

APPLIANCES	APPROX. RUNNING WATTAGE	APPROX. STARTING WATTAGE
DVD Player	25	25
Radio	100	100
Portable Fan	150	200
Laptop Computer	250	250
Television	350	350
Dehumidifier	500	700
Small Refrigerator	500	1,000
Microwave	700	950
Coffeemaker	850	850
Clothes Iron	1,250	1,250
Kettle or Toaster	1,100 – 1,600	1,100 – 1,600
Washing Machine	750	2,300
Clothes Dryer: Gas	700	1,800
Clothes Dryer: Electric	5,750	1,800
Refrigerator or Freezer	700	2,200
Sump Pump (1/3 horsepower)	800	1,300
Electric Range Oven	2,100	2,100

HEATING & COOLING	APPROX. RUNNING WATTAGE	APPROX. STARTING WATTAGE
WATER HEATER, ROOM HEATER, FURNACE FAN, GAS OR FUEL OIL FURNACE		
1/8 horsepower	300	500
1/6 horsepower	500	750
1/4 horsepower	600	1,000
2/5 horsepower	700	1,400
3/5 horsepower	875	2,350
CENTRAL AIR CONDITIONER		
10,000 BTU	1,500	2,200
20,000 BTU	2,500	3,300
24,000 BTU	3,800	4,950
32,000 BTU	5,000	6,500
40,000 BTU	6,000	6,700
RV AIR CONDITIONER		
13,500 BTU	1,800	2,800

WORKSHOP	APPROX. RUNNING WATTAGE	APPROX. STARTING WATTAGE
Jigsaw	300	450
Circular Saw	800 – 1,800	1,200 – 3,000
Table Saw	1,500 – 1,800	3,000 – 4,500
Chain Saw	900	1,200
Disc Grinder	2,000	4,000
Electric Weed Trimmer	500	800
Power Hand Drill	350 – 600	350 – 600
Electric Welder (100 Amps)	3,600	3,600
Shop Vacuum	900	900
Air Compressor		
1/2 horsepower	1,000	2,000
1 horsepower	1,500	4,500
1 1/2 horsepower	2,200	6,000
Air Conditioner (13,500 BTU)	1,800	2,800
Refrigerator or Freezer	700	2,200
Sump Pump (1/2 horsepower)	1,050	2,050
Electric Range Oven	2,100	2,100

Values are estimated for reference only, check your equipment or appliance for actual power requirements.

Do not connect any generator to any building’s electrical system unless an isolation switch has been installed by a licensed electrician and all connections comply with all applicable laws and codes.

/// INVERTERS

CLEAN, QUIET AND LIGHTWEIGHT. INVERTERS CLEAN POWER BY PRODUCING A PURE SINE WAVE THAT'S OFTEN MORE REFINED THAN THE POWER YOU GET FROM A HOUSEHOLD OUTLET. THIS SINE WAVE IS COMPATIBLE WITH TODAY'S MICROPROCESSOR DRIVEN COMPUTERS, SOPHISTICATED ELECTRONICS, APPLIANCES AND TOOLS.



EF1000iS

The ultimate in lightweight, portable electricity – quiet, durable and convenient.

- Pulse Width Modulation provides super “clean” power
- Yamaha’s Noise Block means ultra quiet performance
- Smart Throttle automatically adjusts engine speed to match the load, saving fuel
- Auto Warm-up ensures consistent power delivery during cold start-ups
- Yamaha’s Oil Watch Warning System helps prevent engine damage
- 12 Volt DC output and cables for charging RV, auto and marine batteries
- On-off fuel petcock lets you shut off the gas to run the carb dry for storage
- Suitcase-style handle and light weight make the EF1000iS very portable

Ideal for: Radio, TV, Microwave



EF2000iS/EF2000iS Camo

Ingenuous portability that’s powerful and versatile enough to make your campsite more comfortable or rescue your home in a blackout.

- Pulse Width Modulation provides super “clean” power
- Non-fuse circuit breaker prevents over load damage
- Yamaha’s Noise Block System for ultra quiet performance
- Smart Throttle automatically adjusts engine speed to match the load and saves fuel
- Auto Warm-up ensures consistent power delivery during cold start-ups
- Yamaha’s Oil Watch Warning System helps prevent engine damage
- 12 Volt DC output and cables for charging RV, auto and marine batteries
- USFS approved spark arrestor protects “Mother Nature”

Ideal for: Iron, Electric Grill, Kettle



EF2400iSHC

The EF2400iSHC inverter combines light weight and the latest technology to produce the highest output in its class – enough juice to power up most 13,500-BTU RV air conditioners.

- Ultra reliable, gas-sipping 4-stroke engine for excellent reliability
- High Current output means superior motor starting capability and improved air conditioner starting
- Lightweight, yet rugged aluminium die-cast frame and compact design mean easy portability
- Fuel gauge allows fuel level to be seen at-a-glance
- Smart Throttle adjusts the engine speed to precisely match the load
- Engine speed at full load (2,400 watts) is only 3,400 rpm
- Oil Watch Warning System prevents engine damage caused by low oil
- Cast iron cylinder liner means longer engine life & consistent performance

Ideal for: Circular Saw, 1/3 HP Garage Door Opener, Belt Sander

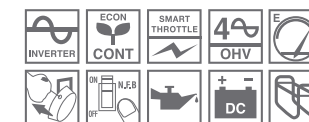


EF2800i

It’s super light, extremely compact and delivers high output. Long operating times with fewer stops to refuel!

- Provides up to 21 amps of continuous power on a single twist lock receptacle
- The EF2800i weighs just 29 kg / 64 lb making it the lightest generator in class
- Pulse Width Modulation makes the EF2800i perfect for powering computers & sophisticated electronics
- Noise suppressor reduces electrical interference with TVs and radios
- Smart Throttle adjusts the engine speed to precisely match the load, saving fuel
- AC non-fuse thermal circuit breaker for added durability and peace of mind
- Oil Watch Warning system prevents engine damage caused by low oil
- Over 7 hours of continuous run time at rated output

Ideal for: Electric Range Oven, 10,000-BTU Air Conditioner, Demolition Hammer



EF3000iSE/EF3000iSEB

Strengthening the core of our inverter lineup is the Yamaha EF3000iSE.

- Electric starting with recoil back-up & maintenance-free T.C. ignition
- 13-litre fuel tank means up to 8 hours of continuous run time at rated output
- Includes Yamaha’s advanced features such as Smart Throttle, Noise Block, Oil Watch Warning System & Auto Warm-up
- Ergonomic design with easy-access controls
- Super quiet operation ranges from 54.5 dB at idle to 61 dB at 3/4 load
- 12 Volt DC output, and battery charging cables included
- Four wheels with parking brake

The **EF3000iSEB** has all the same features as the EF3000iSE, plus:

- Yamaha-exclusive Boost Technology senses when extra power is needed and boosts the output for up to 10 seconds, ample time to give air conditioners, power tools and equipment that extra boost of power they need to start.

Ideal for: Refrigerator, Freezer, 10,000-BTU Air Conditioner



EF4500iSE

The EF4500iSE is designed for maximum fuel efficiency and minimum noise, qualities which make it the ultimate RV accessory.

- 357 cc, 4-stroke engine runs at a low 2,600 rpm for reduced fuel consumption
- Super quiet operation; 65 dB at idle to 68 dB at 3/4 load
- Electric starting and auto choke make starting easy
- Power Meter indicates the amount of power being used and what’s available
- Hour Meter displays the accumulated running time to monitor servicing
- Other features include Smart Throttle, Oil Watch Warning System and spark arrestor
- 4-wheels with parking brake and twin bar body for transport and anti-theft security

Ideal for: Water Heater, Refrigerator, 20,000-BTU Air Conditioner

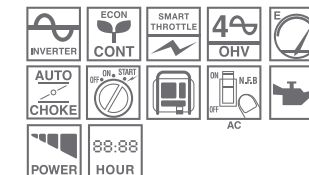


EF6300iSDE

Our most powerful inverter yet, the EF6300iSDE is a fully enclosed modern design making it practically silent!

- Dual voltage provides the versatility of 120 or 240 volt operation
- Electric starting with manual back-up and auto choke for easy starting
- Pulse Width Modulation for powering computers & sophisticated electronics
- Oil Watch Warning System prevents engine damage caused by low oil
- Smart Throttle adjusts the engine speed to precisely match the load, saving fuel
- Power Meter & Hour Meter displays
- Over 5 hours of continuous operation at rated load
- Optional wireless remote start works up to 20 metres or 66 feet away

Ideal for: Clothes Dryer, Average Air Compressor, Disc Grinder





PREMIUM GENERATORS

AFFORDABLE POWER ANYTIME. ANY PLACE. IF YOU'RE GOING TO BE POWERING LIGHTS, A SPACE HEATER OR USE SIMPLE POWER TOOLS AND COST IS A FACTOR, THEN A YAMAHA PREMIUM GENERATOR IS WHAT YOU'RE LOOKING FOR.



EF2600

Power home appliances in an emergency, tools like a 1/2 horsepower sump pump or a space heater. Its quiet dependability offers unrivalled performance and peace of mind.

- Reliable & efficient, 4-stroke, 171 cc, single cylinder, air-cooled engine
- Damper Winding alternator reduces wave form distortion for cleaner power
- Brushless alternator is maintenance-free, for ultra reliable operation
- Auto-decompression system & transistor controlled ignition means easy starting
- 12-litre tank provides 9 hours of continuous operation at rated load.
- Rugged full rollover frame for added durability and protection
- Mechanical governor maintains engine speed for consistent AC output.
- Oil Watch Warning system prevents engine damage caused by low oil

Ideal for: Chain Saw, ½ hp Sump Pump, Vacuum Cleaner



EF4000D

For the cottage or for the job site.

- Dual voltage provides the versatility of 120 or 240 volt operation
- Damper Winding alternator reduces wave form distortion for cleaner power
- Brushless alternator is maintenance-free, for ultra reliable operation
- Reliable & efficient, 4-stroke, 357 cc, single cylinder, air-cooled engine
- Economy Control System reduces engine speed when there is no load
- Oil Watch Warning system prevents engine damage caused by low oil
- Mechanical governor maintains engine speed for consistent AC output
- Over 9 hours of continuous run time at rated output

Ideal for: 12" Concrete Cutter, Freezer, Belt Sander



EF5200DE

Unbeatable combination of power and performance in a quiet, compact design.

- Dual voltage provides the versatility of 120 or 240 volt operation
- Automatic Voltage Regulator (AVR) means accurate power delivery
- Brushless alternator is maintenance-free, for ultra reliable operation
- AC non-fuse thermal circuit breaker prevents damage from over loading
- Electric starting with manual back-up & transistor controlled ignition
- Cast iron cylinder liner for longer engine life & consistent performance
- Economy Control System reduces engine speed when there is no load
- Oil Watch Warning system prevents engine damage caused by low oil

Ideal for: Clothes Dryer, Water Heater, Refrigerator



EF5500DE

Great value with the same legendary quality and performance.

- New Yamaha MZ360 engine
- Transistor controlled ignition
- Electric starting and auto choke
- Damper Winding alternator reduces wave form distortion for cleaner power
- Eight hours run time at full load - 13% longer than previous model
- Rugged wheels with fold-down locking handles
- Cast iron cylinder lining
- Oil Watch Warning System prevents engine damage caused by low oil
- Fuel gauge allows fuel level to be seen at-a-glance
- Battery is standard on the EF5500DE
- Digital volt & hour meter
- Economy Control System reduces engine speed when there is no load

Ideal for: Construction Sites, Power Equipment, Central Air Conditioner

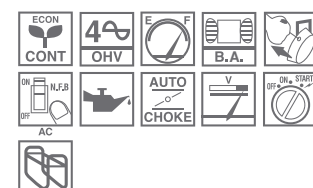


EF6600DE

Convenient, powerful and efficient for home or commercial use.

- Dual voltage provides the versatility of 120 or 240 volt operation
- Economy Control System reduces engine speed when there is no load
- Electric starting with manual back-up and automatic choke for easy starting
- Oil Watch Warning system prevents engine damage caused by low oil
- Automatic Voltage Regulator (AVR) regulates power delivery
- AC non-fuse thermal circuit breaker prevents damage from over loading
- Cast iron cylinder liner means longer engine life & consistent performance

Ideal for: Disc Grinder, Air Compressor, Washing Machine

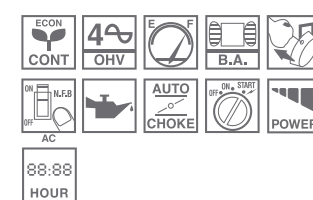


EF7200DE

Introducing the all new EF7200DE gas powered generator. This versatile dual 120/240 volt unit is ideal for emergency backup power for home, cottage or business.

- New Yamaha MZ360 engine
- Transistor controlled ignition
- Electric starting backed up by manual recoil with auto decompression
- Auto choke for easy, no hassle starting
- Dual 120 & 240 volt output makes the EF7200DE very versatile
- Folding handle and lift hook for improved portability
- Never flat, non-pneumatic tires mounted to rugged steel axles
- Digital volt & hour meter
- Economy Control System reduces engine speed when there is no load
- Oil Watch Warning system prevents engine damage caused by low oil

Ideal for: Central Air Conditioning, Electric Range Oven, Table Saw, Electric Chainsaw



EF12000DEX

Our highest output gasoline-powered 120 / 240-volt generator.

- 653 cc, twin cylinder, 4-stroke engine with electric starting & auto choke
- Dual voltage provides the versatility of 120 & 240 volt operation
- Economy Control System reduces engine speed when there is no load
- Oil Watch Warning system prevents engine damage caused by low oil
- AC non-fuse thermal circuit breaker prevents damage from over loading
- Noise suppressor reduces electrical interference with TVs and radios
- Power Meter & Hour Meter displays
- USFS-approved spark arrestor protects "Mother Nature"

Ideal for: Washing Machine, Clothes Dryer, Water Heater



EDL7000SDE

The EDL7000SDE is primarily designed for commercial applications, but because of its compact size and reduced noise levels, it can also be used for emergency power backup and off grid applications too.

- Powered by Z482 vertical type diesel engine; 479cc, liquid-cooled (rad with cooling fan), twin cylinder, 4-stroke with electronic ignition
- Dual 120 & 240 volt output
- Run time at rated load is 10 hours
- 200 hour oil change cycle
- Warning lights for low battery, low oil pressure and coolant temperature
- Large opening maintenance hatch for easy access to oil filter, air filter, fuel filter, battery etc.
- 28 litre fuel tank for extended run times
- Heavy duty lifting hook and fork lift slots

Ideal for: Off-grid Applications, Construction Sites, Back-up Power



EDL11000SDE

If lower running costs and easier maintenance access are important to your business, farm, job site or off grid application, then check out extensive range of features the EDL11000SDE offers.

- Powered by D722 vertical type diesel engine; 719cc, liquid-cooled (rad with cooling fan), three cylinder, 4-stroke with electronic ignition
- Compact and lightweight design.
- Smallest and lightest in its class
- Dual 120 & 240 volt output
- Run time at rated load is 7 hours
- Dual Ground Fault Interrupter Circuit receptacles for added safety
- 200 hour oil change cycle
- Warning lights for low battery, low oil pressure and coolant temperature
- Large opening maintenance hatch for easy access to oil filter, air filter, fuel filter, battery etc.
- 28 litre fuel tank means extended run times

Ideal for: Off-grid Applications, Construction Sites, Back-up Power





/// PRESSURE WASHER

THE YAMAHA PW3028 PRESSURE WASHER. ENGINEERED TO NOT JUST MEET, BUT TO BEAT THE COMPETITION. FOR DURABILITY, QUALITY, CONVENIENCE, AND OF COURSE PERFORMANCE; THIS IS WHAT HAPPENS WHEN YAMAHA DECIDES TO BUILD A PRESSURE WASHER.



PW3028	
Engine	MZ200, 192 cc, air-cooled, OHV, single-cylinder, 4-stroke, EPA & CARB approved
Starting Method	Manual recoil with auto decompression
Length	610 mm (24")
Width	660 mm (26")
Height (handle up/handle down)	915 mm (41.5") / 635 mm (25")
Dry Weight	43.5 kg (96 lb)
Gas Tank Capacity	5.5 litres (1.2 imp. gal.)
Run Time	1.5 - 2 hours on full tank
Nozzles	5-in-1 integrated: 25°, 40°, soap jet, soap fan & low-pressure 800 psi
Hose	9.1-m / 30-ft high-pressure braided steel with protective cover
Tires	13 x 5 x 6" (non-pneumatic – never flat)
PSI	3,000
GPM	2.8
Warranty	3-year residential, 1-year commercial



5-in-1 Integrated Nozzle with Protective Rubber Over-Mould



Powerful 3000 PSI spray



Durable Quick Connect Brass Fittings



/// SNOWBLOWERS

DURABLE, EASY-TO-USE WORK HORSES. DESIGNED TO GET THE JOB DONE QUICKLY AND EFFICIENTLY. WHEN PERFORMANCE AND RELIABILITY COUNT, YOU CAN ALWAYS DEPEND ON YAMAHA SNOWBLOWERS.

NEW!



SPECIFICATIONS	YT624EJ	YS1028J	YT1232ED
Clearing Width	615 mm (24")	715 mm (28")	815 mm (32")
Clearing Height	440 mm (17")	510 mm (20")	570 mm (22.4")
Blowing Capacity	35 tons/hr	60 tons/hr	76 tons/hr
Maximum Blowing Distance	15 m (49')	17 m (55')	19 m (62')
Drive	Dual 130 mm (5.1") rubber tracks	Dual 130 mm (5.1") rubber tracks	Dual 180 mm (7.1") rubber tracks
Transmission	Hydrostatic	Hydrostatic	Hydrostatic
Auger Type	Dual stage with shear bolts	Dual stage with shear bolts	Dual stage with shear bolts
Auger Diameter	310 mm (12.2")	350 mm (13.8")	400 mm (15.7")
Auger Drive	Belt	Electromagnetic	Belt
Chute Rotation	Electric	Electric	Electric
Chute Radius	220°	220°	230°
Engine Type	4-Stroke, OHV, air-cooled	4-Stroke, OHV, air-cooled	4-Stroke, OHV, air-cooled
Displacement	171 cc	296 cc	357 cc
Horsepower	6.0 hp	10.0 hp	12.0 hp
Starting System	Electric	Electric	Electric
Ignition	TCI	TCI	TCI
Fuel Capacity	4.5 litres (1 imp. gal)	6.7 litres (1.5 imp. gal)	6.7 litres (1.5 imp. gal)
Wet Weight	114 kg (251 lb)	169 kg (373 lb)	246 kg (542 lb)
Dimensions	1468 x 621 x 1108 mm (57.8 x 24.4 x 43.6")	1560 x 730 x 1105 mm (61.4 x 28.7 x 43.5")	1707 x 830 x 1360 mm (67.2 x 32.7 x 53.5")
Warranty	3-year residential, 3-year commercial	3-year residential, 3-year commercial	3-year residential, 3-year commercial



All Yamaha snowblowers come equipped with a steel chute lined with plastic to reduce snow sticking and build up, a bright utility light, and rubber tracks for superior traction.

WATER PUMPS

DEPENDABLE POWER, MAXIMUM EFFICIENCY, YAMAHA QUALITY. YAMAHA WATER PUMPS ARE POWERED BY 4-STROKE OHV AIR-COOLED ENGINES, WHICH ARE SMALLER, MORE POWERFUL AND CONSUME LESS FUEL THAN COMPARABLE ENGINES. THE SELF-PRIMING CENTRIFUGAL PUMPS DELIVER UP TO 102 FEET OF TOTAL HEAD, 23 FEET OF SUCTION HEAD AND ARE CAPABLE OF MOVING UP TO 980 LITRES PER MINUTE. YAMAHA PUMPS. COMPACT, PORTABLE, ECONOMICAL AND RELIABLE.



SPECIFICATIONS	YP20GY	YP30GY
Type	Self-priming, centrifugal	Self-priming, centrifugal
Size	50 mm (2")	80 mm (3")
Maximum Capacity	600 litres/min (132 gal/min)	980 litres/min (216 gal/min)
Total Head	30 m (98.5 ft)	31 m (102 ft)
Suction Head	7 m (23 ft)	7 m (23 ft)
Maximum Discharge Pressure	3 kg/cm ² (42.7 psi)	3.1 kg/cm ² (44.1 psi)
Priming Time	120 sec @ 5 m (16.4 ft)	120 sec @ 5 m (16.4 ft)
Engine Type	4-Stroke, OHV, air-cooled	4-Stroke, OHV, air-cooled
Displacement	123 cc	171 cc
Horsepower	4 hp @ 4,000 rpm	5.5 hp @ 4,000 rpm
Engine Starting	Recoil	Recoil
Ignition	TCI	TCI
Fuel Capacity	4.5 litres (1 imp. gal)	4.5 litres (1 imp. gal)
Dry Weight	27 kg (59.4 lb)	30 kg (66 lb)
Dimensions	502 x 393 x 454 mm (19.8 x 15.5 x 17.9")	518 x 397 x 466 mm (20.4 x 15.6 x 18.3")
Warranty	3-year residential, 1-year commercial	3-year residential, 1-year commercial

- Self-priming centrifugal pump, powered by Yamaha's tough 4-stroke, 123 cc OHV engine, can move up to 600 litres per minute through its two-inch port.
- Quieter, more powerful and more fuel-efficient than comparable engines
 - 171 cc OHV 4-stroke pumps up to 980 litres per minute – or 58,800 litres per hour! – through its three-inch port.

MUST HAVE FOR

- D.I.Y. open/closing pools and spas
- Irrigation
- Draining flooded worksites
- Peace of mind for isolated homes and cottages

STANDARD FEATURES

- Cast-iron impeller for long life, and heavy-duty carbon-ceramic seals for greater durability and reduced abrasion
- Low Oil Warning System with automatic engine shut-off
- Recoil start with auto decompression
- Standard N.P.T. fittings ensure easy hose connections
- Sturdy, wraparound steel-tube frame for added protection
- Electronic ignition for easy starting
- Large muffler and air cleaner assembly provide extremely quiet operation
- Die-cast aluminum pump housings mean lighter carrying weight

WATER PUMP & GENERATOR

ACCESSORIES

1

2

3

4

5

6

7

8A

8B

8C

1a. YP30GY 3" SUCTION HOSE ASSEMBLY (20-ft)
ACC-03003-11-00 **\$170.95**

b. YP20GY 2" SUCTION HOSE ASSEMBLY (20-ft)
ACC-03002-11-00 **\$106.95**

c. YP20GY 2" DISCHARGE HOSE ASSEMBLY (50-ft)
ACC-03002-21-00 **\$85.95**

d. YP30GY 3" DISCHARGE HOSE ASSEMBLY (50-ft)
ACC-03003-21-00 **\$138.95**

2a. YP20GY 2" CAMLOCK GASKET
ACC-03002-41-00 **\$0.95**

b. YP30GY 3" CAMLOCK GASKET
ACC-03003-41-00 **\$1.95**

3a. YP30GY 3" SUCTION STRAINER (Round Hole type)
ACC-03003-31-00 **\$24.95**

b. YP20GY 2" SUCTION STRAINER (Round Hole type)
ACC-03002-31-00 **\$20.95**

c. YP20GY 2" PUMP ADAPTER
ACC-ALA20-00-00 **\$6.95**

c. YP30GY 3" PUMP ADAPTER
ACC-ALA30-00-00 **\$10.95**

d. YP20GY 2" CAMLOCK COUPLING
ACC-ALC20-00-00 **\$14.95**

d. YP30GY 3" CAMLOCK COUPLING
ACC-ALC30-00-00 **\$22.95**

4. WATER PUMP KIT
Includes Suction Hose Assembly, Discharge Hose, and Suction Strainer.

- Fits YP20GY
ACC-PUMP2-IN-KT **\$212.95**
- Fits YP30GY
ACC-PUMP3-IN-KT **\$332.95**

5. NOZZLE KITS
Fog nozzle to fit the Discharge Hose Assembly, sold separately. (may not be exactly as shown)

- Fits YP20GY
1.5" step down fog nozzle to fit the 2" discharge hose.
ACC-NOZZL-KT-12 **\$63.95**
- Fits YP30GY
2" fog nozzle for the 2" discharge hose.
ACC-NOZZL-KT-22 **\$113.95**
- Fits YP30GY
2" step down fog nozzle to fit the 3" discharge hose.
ACC-NOZZL-KT-23 **\$135.95**

6. FOOT VALVES
Keeps the continuous presence of suction (prime) within the pump so it does not require priming after each use. Can be used in a well or a body of water. Made of painted malleable iron.

- Fits YP20GY 2" Foot Valve
ACC-FV200-00-00 **\$49.95**
- Fits YP30GY 3" Foot Valve
ACC-FV300-00-00 **\$84.95**

7. UNIVERSAL WHEEL KIT
Innovative bracket concept allows for maximum adjustability to encompass a variety of frame sizes. Durable pneumatic tires and easy lift handle positioning for balanced manoeuverability. Powder-painted black Sandtex®. Comes with all hardware and instructions for easy installation. (May not be exactly as shown)

- Fits EF2600, EF4000D, EF5200DE, EF6600DE, YP20GY, YP30GY
GEN-WHEEL-01-KT **\$182.95**

8. GENERATOR & WATER PUMP COVERS
Protect your investment during storage with a cover made from premium SurLast® polyester fabric. This UV-resistant material fights fading while protecting your equipment from the elements. A special urethane coating lets moisture escape from underneath while remaining water-repellent. The cover is mold and mildew-resistant, as well as tear and abrasion-resistant for durability.

WITHOUT WHEEL KITS

a. Fits EF2000iS
GEN-COVER-20-00 **\$48.95**

- Fits EF2400iSHC, EF2600, EF2800i, YP20GY, YP30GY

GEN-COVER-26-00 **\$42.95**

- Fits EF3000iSE, EF3000iSEB

GEN-COVER-30-01 **\$40.95**

- Fits EF4500iSE, EF6300iSDE

ACC-GNCVR-45-01 **\$82.95**

- Fits EF5200DEH, EF6600DEJ

GEN-COVER-52-66 **\$37.95**

b. Fits EF1000iS
GEN-COVER-10-00 **\$31.95**

WITH WHEEL KITS

c. Fits EF4000D, EF4600A, EF4600DE, EF5200DE, EF6600DE
ACC-GNCVR-46-01 **\$69.95**

/// WATER PUMP, GENERATOR & SNOWBLOWER

ACCESSORIES



1. HOUR METERS
Yamaha's Engine Meters help you keep track of your engine's operating hours. Fits all 4-stroke Yamaha gasoline generators and pumps.

a. DELUXE HOUR METER & TACHOMETER
Features pre-programmed service intervals at 10 hours (initial) and every 50 hours thereafter. A flash alert displays for a 2-hour period upon reaching the specified interval. Includes hour meter and tachometer functions.
ENG-METER-4C-02 \$79.95

b. STANDARD HOUR METER
Has hour meter function only (no service alerting function). Installs in minutes.
ENG-HOURS-00-01 \$49.95

2. REMOTE STARTER
(33-ft Cable Length)
Extra convenience for getting your Yamaha generator up and running when you need to.
• Fits EF4600DEX, EF5200DE, EF5200DEC, EF6200PDEX, EF6600DE, EF7200DE
7VW-Y8720-A0-00 \$218.95
• Fits EF4500iSE, EF6300iSDE
7XF-Y8600-10-00 \$287.95

3. WIRELESS REMOTE EXTERNAL ANTENNA
Internal antenna is perfect for operation up to 75 feet away, for longer range use, up to 300 feet unobstructed.
• Fits EF3000iSE, EF3000iSEB
ACC-GNRST-30-10 \$76.95

4. WIRELESS REMOTE
This convenient remote start kit allows you to start and stop your Yamaha EF3000iSE or EF3000iSEB generator remotely. Features include fully automatic starting using the wireless remote start/stop switch on the easy-to-carry key fob transmitter. Start Kit automatically activates the choke when needed, so you can even start a cold generator with ease. Panel-mounted key switch can still be used to start the generator when desired. Internal antenna is perfect for operation up to 75 feet away; for longer range use, up to 300 feet unobstructed, order the Optional External Antenna, sold separately. QuickStart Remote Start Kit connects into a connector already in place on the generator's wiring harness, and mounts securely inside the generator using an existing mounting bolt.
• Fits EF3000iSE, EF3000iSEB
ACC-GNRST-50-00 \$541.95

5. RELIANCE CONTROLS AMP/WATT APPLIANCE LOAD TESTER
Gives quick, accurate readout of watts or amps used by 120-volt AC electrical devices (1,875 watts maximum) such as: refrigerators, dehumidifiers, space heaters, holiday lighting, coffeemakers, hair dryers and much more. Has a 26" cord to reach remote electrical outlets. Easy amps/watts slide switch. This tester is also perfect for matching appliance loads to generator power output.
ACC-OSS58-40-44 \$50.95

6. SCEPTER ECO® JERRY CAN
Features self-venting spouts, child-resistant closures and a handle that allows for easier pouring.
5-litre
ACC-07081-0A-B5 \$9.95

7. SNOWBLOWER COVERS
When not in use, protect your Yamaha Snowblower with this durable polyester cover.
• Fits YT624E/DJ
90798-1Y340-00 \$90.95
• Fits YT1232ED
90798-1Y342-00 \$102.95

8. DRIFT CUTTER
Helps cut through tall banks and drifts bringing the snow down to the blowers level to maximize clearing time. Nuts (95702-08500-00 - 4) & Bolts (95822-08020-00 - 4) are required for installation, sold separately.
• Fits YT624E, YT624EDJ
7RV-R1552-00-NJ \$37.95

/// PRESSURE WASHER

ACCESSORIES



durability and longer performance life. Includes 800-psi nozzle for safe cleaning of delicate surfaces. Works with many gas-powered pressure washers up to 4,500 psi.
ACC-31055-00-13 \$28.95

3. WAND EXTENSION KIT
Extend the length of your pressure washer wand by 36" for easier reaching. Includes quick-connect adapter to transform any thread nozzle into a quick-connect nozzle. Works with many gas-powered pressure washers up to 4,500 psi.
ACC-31053-00-13 \$52.95

4. TELESCOPING POLE
Adjustable height extends between 7' to 16.5'. Quick-connect capable for easy attaching. Angled wand tip for more direct contact with high surfaces. Works with many gas-powered pressure washers up to 4,200 psi.
ACC-31044-00-13 \$211.95

5. REPLACEMENT WAND
Ideal upgrade for old or worn-out spray wands. Quick-connect capable for easy attaching of all quick-connect accessories. Works with many gas-powered washers up to 4,500 psi.
ACC-31049-00-13 \$33.95

6. SURFACE CLEANER
Cleans larger surfaces up to 4 times faster than a standard nozzle. Rotating nozzles provide streak-free, even cleaning. Attaches easily to any quick-connect capable pressure washer. Recommended for many gas-powered washer up to 3,300 psi.
ACC-31056-00-13 \$98.95

7. STEEL-BRAIDED HOSE
Steel-braided construction for durability and long life. Quick-connect capable for easy attaching. 30' for more reach than standard hoses. Links to existing hoses for longer reach. Recommended for many gas-powered washers up to 3,300 psi.
ACC-31057-00-13 \$133.95

8. GARDEN HOSE ADAPTER KIT
Quick-connect adapter for your garden hose. Snap your garden hose directly into your pressure washer pump. Recommended for use with many gas-powered washers up to 4,500 psi.
ACC-31054-00-13 \$10.95

9. GUTTER CLEANER
Fast and effective gutter cleaning. Two high-pressure water jets blast debris out and away. Directs debris and water away from the user for clean, dry operation. Quick-connect capable for easy attachment. Recommended for many gas-powered washers up to 3,300 psi. Recommended for use with extension wands.
ACC-31051-00-13 \$50.95

10. CAT PUMPS OIL
Premium-grade oil promotes better performance and longer pump life. Anti-corrosion technology keeps your pump conditioned and protected. Anti-wear stabilizers for reliable performance day after day.
ACC-31045-00-13 \$20.95

11. MULTI-PURPOSE GREASE
General purpose aluminum-complex grease resists melting and running under extreme temperature application, excellent for wheel bearings, steering and chasis lube points. Use where specified in the service manual to use grease "B". 453 g
ACC-MLTPR-GR-00

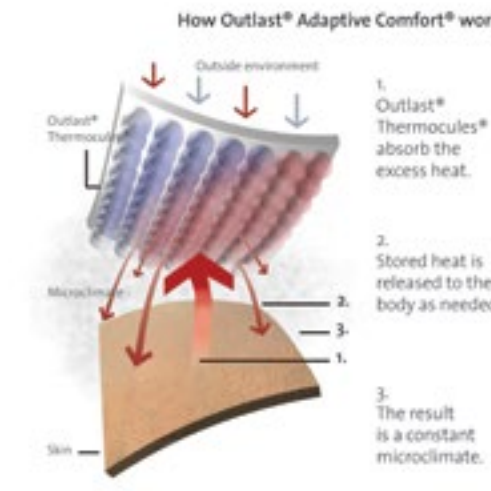
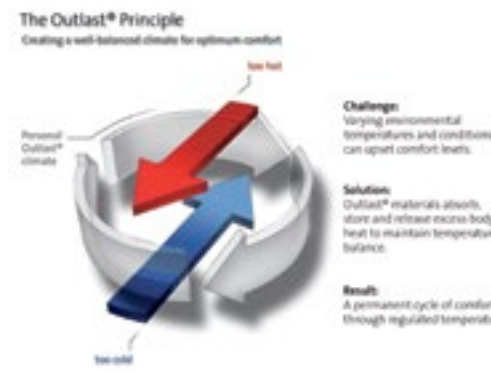
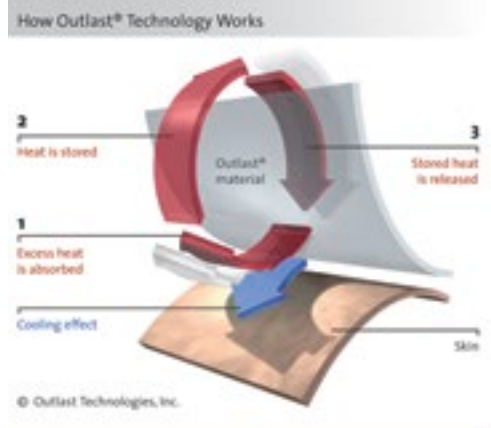
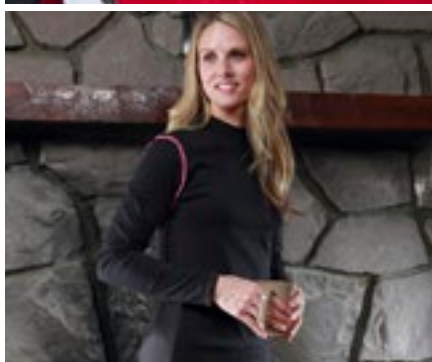
1. TURBO NOZZLE
Cleans up to 50% faster than a standard nozzle. Delivers 0° rotating spray pattern for faster cleaning. Works with many gas-powered pressure washers up to 4,200 psi.
ACC-31048-00-13 \$93.95

2. NOZZLE KIT
Includes 0°, 25°, 40°, soap, and 800 psi nozzles for cleaning a variety of surfaces. Heavy-duty electro polish finish for more

/// COLD-WEATHER APPAREL WHAT IS OUTLAST®



Yamaha is known for innovation and providing features that customers want. This is why we are bringing Outlast technology to you through select Yamaha gear. Outlast is a temperature regulating technology developed for NASA astronauts and an industry exclusive available through your local Yamaha dealer. Outlast lets any fabric absorb, store and release heat, which keeps you comfortable all day. Simply put, apparel with Outlast regulates your temperature, keeping you cooler when you're warm and warmer when you're cool no matter what conditions you endure. Check out our full line of apparel – from base layers to outerwear – with Outlast technology, and gear up for the most comfortable outdoor experience ever.



PROTECTION THAT KEEPS THE DAY RUNNING SMOOTHLY

YAMALUBE QUALITY CARE PRODUCTS



Yamaclean® Instant Detailer

This waterless wash and detailer cleans, shines and protects virtually any surface on your Yamaha. Its organic polymer leaves a natural shine with a protective anti-static finish.



Yamaclean Pro-Wash Spray

Biodegradable vehicle spray that removes grime and soil. Rinses clean and keeps your vehicle looking new.

YAMALUBE ADDITIVES



Ring Free Plus

Removes carbon and protects fuel system metals from ethanol fuel corrosion. 100 ml travel size treats 19 L of gas.



Fuel Stabilizer & Conditioner PLUS

Helps resist phase separation, deters ethanol corrosion and keeps stored fuel fresh. 100 ml travel size treats 19 L of gas.

YAMALUBE MAINTENANCE



External Engine Cleaner

This powerful engine degreaser and cleaner removes grease, mud and grime. Safe on most rubber, plastic and painted surfaces.



Combustion Chamber Cleaner

Used to remove carbon and other contaminants from the cylinders, pistons, rings, intake tracts and valves.

/// YAMALUBE® PRODUCTS FOR POWER EQUIPMENT



Full-Synthetic Four-Stroke
SAE 15W-50
Blended from fully-synthetic base oils and fortified with synthetic esters to provide the absolute highest performance and protection.



Semi-Synthetic Four-Stroke
SAE 5W-40
Contains a special blend of synthetic and mineral base stocks to lubricate and protect your Yamaha under the added stress of low speed hauling and climbing.

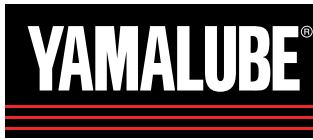


Performance Four-Stroke
SAE 5W-30
Blended specifically for your Yamaha with additives and base oils designed to give year-round performance, from cool to warm climates. Designed with hardworking detergents to keep the engine cleaner longer.



Performance Four-Stroke
SAE 10W-40
Blended with premium-quality mineral base stocks. It provides stable clutch performance and film strength protecting your engine from the wear and tear of daily use.

YAMALUBE OIL



DO YOU YAMALUBE?

Using car oil in your Yamaha can lead to long term damage and reduced engine performance. Trust the oil that is engineered by the same people who built your Yamaha. Yamalube – quality lubricants specifically formulated for your Yamaha.

INVERTERS
/// SPECIFICATIONS



		EF1000iS	EF2000iS	EF2400iSHC	EF2800i	EF3000iSE	EF3000iSEB	EF4500iSE	EF6300iSDE
GENERATOR	Type	Inverter	Inverter	Inverter	Inverter	Inverter	Inverter	Inverter	Inverter
	Maximum AC output (watts)	1,000	2,000	2,400	2,800	3,000	3,000	4,500	6,300
	Rated AC output (watts) - continuous use	900	1,600	2,000	2,500	2,800	2,800	4,000	5,500
	Maximum AC current (amps)	8.3 @ 120 volts	16.7 @ 120 volts	20 @ 120 volts	23 @ 120 volts	25 @ 120 volts	25 @ 120 volts	37 @ 120 volts	52.5 @ 120 V & 26.3 @ 240 V
	Rated AC current (amps) - continuous use	7.5 @ 120 volts	13.3 @120 volts	16.7 @ 120 volts	20.8 @120 volts	23.3 @120 volts	23.3 @120 volts	33.3 @120 volts	45.8 @ 120 V / & 22.9 @ 240 V
	AC voltage & rated AC frequency	120 V / 60 Hz	120 V / 60 Hz	120 V / 60 Hz	120 V / 60 Hz	120 V / 60 Hz	120 V / 60 Hz	120 V / 60 Hz	120 & 240 V / 60 Hz
	DC Output (Volt/Amp)***	12V / 6.5 A	12V / 6.5 A	12V / 6.5 A	12V / 8.3 A	12V / 8.3 A	12V / 8.3 A	NA	NA
	Neutral	Floating	Bonded	Floating	Floating	Floating	Floating	Bonded	Bonded
ENGINE	Engine model	Yamaha MZ50	Yamaha MZ80	Yamaha MZ175	Yamaha MZ175	Yamaha MZ175	Yamaha MZ175	Yamaha MZ360	Yamaha MZ360
	Engine type	50 cc, air-cooled (fan), OHV, 2-valve, single	79 cc, air-cooled (fan), OHV, 2-valve, single	171 cc, air-cooled (fan), OHV, 2-valve, single	171 cc, air-cooled (fan), OHV, 2-valve, single	171 cc, air-cooled (fan), OHV, 2-valve, single	171 cc, air-cooled (fan), OHV, 2-valve, single	357 cc, air-cooled (fan), OHV, 2-valve, single	357 cc, air-cooled (fan), OHV, 2-valve, single
	Fuel / tank capacity / type	Gas / 2.5 litres / 87 octane	Gas / 4.2 litres / 87 octane	Gas / 6 litres / 87 octane	Gas / 11.2 litres / 87 octane	Gas / 13 litres / 87 octane	Gas / 13 litres / 87 octane	Gas / 17 litres / 87 octane	Gas / 17 litres / 87 octane
	Ignition / starting	TCI / Recoil	CDI / Recoil	TCI / Recoil	CDI / Recoil	TCI / Electric & Recoil	TCI / Electric & Recoil	TCI / Electric	TCI / Electric
	Engine oil capacity	0.32 L	0.42 L	0.6 L	0.6 L	0.6 L	0.6 L	1.3 L	1.3 L
	Continuous operation @ rated output	4.3 hrs**	4.2 hrs**	5 hrs	7.6 hrs**	8 hrs**	8 hrs**	7.4 hrs	5.1 hrs**
	Noise level @ 3/4 load @ 7 meters	48.5 - 60.5 dB**	51.5 - 61 dB**	54.5 - 61 dB	65 - 68 dB**	54.5 - 61 dB**	54.5 - 61 dB**	65 - 68 dB	58 - 64 dB**
GENERAL	Unit dimensions (L x W x H)	450 x 240 x 380 mm (17.7 x 9.4 x 15")	490 x 280 x 455 mm (13.3 x 11 x 17.9")	527 x 419 x 461 mm (20.7 x 16.5 x 18.1")	487 x 395 x 425 mm (19.2 x 15.6 x 16.7")	680 x 445 x 555 mm (26.8 x 17.5 x 21.9")	680 x 445 x 555 mm (26.8 x 17.5 x 21.9")	780 x 616 x 692 mm (30.7 x 24.3 x 27.2")	780 x 616 x 692 mm (30.7 x 24.3 x 27.2")
	Unit dry weight (no fuel)	13 kg / 29 lb	21 kg / 46 lb	34 kg / 76 lb	30.5 kg / 67 lb	68 kg / 150 lb	69 kg / 152.1 lb	100 kg / 220 lb	102 kg / 225 lb
UNIT FEATURES	Yamaha's Pulse Width Modulation Inverter System	•	•	•	•	•	•	•	•
	Electronic + Non-fuse circuit breaker system	•	•	•	•	•	•	•	•
	Dual Voltage (120 & 240 volts)								•
	Auto Choke							•	•
	Auto Warm-up	•	•	•	•	•	•		
	Economy Control System / Smart Throttle	•	•		•	•	•		•
	Pilot lamps (AC output)	•	•	•	•	•	•	•	•
	Warning lamps (Overload / Low Oil)	•	•	•	•	•	•	•	•
	Power meter							•	•
	Hour meter							•	•
	Oil Watch Warning System	•	•	•	•	•	•	•	•
	Fuel level gauge		•	•	•	•	•	•	•
	Fuel petcock (on - off)	•	•	•	•	•	•	•	•
	Noise Block (silent type "body" design)	•	•	•		•	•	•	•
	Spark arrestor	•	•	•		•	•	•	•
	Yamaha Boost Technology (YBT)						(10-second)		
	Twist lock, single 3-prong receptacle				•	•	•	•	•
ACCESSORIES	DC battery charge cord included	•	•	•	•	•	•		
	Wheel kit					4-wheels (std)	4-wheels (std)	4-wheels (std)	4-wheels (std)
	Remote starter					optional	optional	optional	optional
WARRANTY	Personal use	3-year limited	3-year limited	3-year limited	3-year limited	3-year limited	3-year limited	3-year limited	3-year limited
	Commercial use	2-year limited	3-year limited	3-year limited	3-year limited	3-year limited	3-year limited	3-year limited	3-year limited



3-YEAR LIMITED WARRANTY*

Yamaha offers a standard 3-year limited warranty on all generators. Standard. No extra fees. At Yamaha we stand behind our products, providing you peace of mind.

* 3-year limited warranty on all generators for personal or commercial use (except EF1000iS, 2-year for commercial). Water pumps and pressure washer receive 3-year warranty for personal use and 1-year for commercial. See dealer for details. Due to Yamaha's ongoing commitment to product improvement, we reserve the right to change without notice.

* Refer to generator output specification for maximum available amperage

** Economy control system : ON

*** Refer to owner's manual for proper use of DC output

PREMIUM
/// SPECIFICATIONS



	EF2600	EF4000D	EF5200DE	EF5500DE	EF6600DE	EF7200DE	EF12000DEX	EDL7000DE	EDL11000DE	
GENERATOR	Type	Generator - brushless w/ Damper Winding	Generator - dual voltage & brushless w/ Damper Winding	Generator - dual voltage & brushless	Generator - dual voltage & brushless w/ Damper Winding	Generator - dual voltage & brushless	Generator - dual voltage & brushless	Generator - dual voltage (brush type, AVR)	Generator - dual voltage & brushless	Generator - dual voltage & brushless
	Maximum AC output (watts)	2,600	4,000	5,200	5,500	6,600	7,200	12,000	7,000	11,000
	Rated AC output (watts) - continuous use	2,300	3,500	4,500	4,500	6,000	6,000	9,500	6,500	10,000
	Maximum AC current (amps)	21.7 @ 120 volts	33 @ 120 volts / 17 @ 240 volts	43.3 @ 120 volts / 21.7 @ 240 volts	44 @ 120 volts / 36 @ 240 volts	55 @ 120 volts / 27.5 @ 240 volts	60 @ 120 volts / 30 @ 240 volts	100 @ 120 volts / 50 @ 240 volts	N/A	N/A
	Rated AC current (amps) - continuous use	19.2 @ 120 volts	29 @ 120 volts / 15 @ 240 volts	37.5 @ 120 volts / 18.8 @ 240 volts	22.9 @ 120 volts / 18.75 @ 240 volts	50 @ 120 volts / 25 @ 240 volts	50 @ 120 volts / 25 @ 240 volts	79.2 @ 120 volts / 39.6 @ 240 volts	54.2 @ 120 volts / 27.1 @ 240 volts	83.3 @ 120 volts / 41.7 @ 240 volts
	AC voltage & rated AC frequency	120 V / 60 Hz	120 - 240 V / 60 Hz	120 - 240 V / 60 Hz	120 - 240 V / 60 Hz	120 - 240 V / 60 Hz	120 - 240V / 60 Hz	120 - 240 V / 60 Hz	120 - 240 V / 60 Hz	120 - 240 V / 60 Hz
	Neutral	Bonded	Bonded	Bonded	Bonded	Bonded	Bonded	Bonded	Bonded	Bonded
ENGINE	Engine model	Yamaha MZ175	Yamaha MZ360	Yamaha MZ360	Yamaha MZ360	Yamaha MZ360	Yamaha MZ360	V-Twin, 4-stroke	Z482	D722
	Engine type	171 cc, air-cooled (fan), OHV, 2-valve, single	357 cc, air-cooled (fan), OHV, 2-valve, single	357 cc, air-cooled (fan), OHV, 2-valve, single	357 cc, air-cooled (fan), OHV, 2-valve, single	357 cc, air-cooled (fan), OHV, 2-valve, single	357 cc, air-cooled (fan), OHV, 2-valve, single	653 cc, air-cooled (fan), OHV, 2-valve, twin	479 cc, liquid-cooled (rad & fan), 2-valve, twin	719 cc, liquid-cooled (rad & fan), 2-valve, triple
	Fuel / tank capacity / type	Gas / 12 litres / 87 octane	Gas / 25 litres / 87 octane	Gas / 25 litres / 87 octane	Gas / 26 litres / 87 octane	Gas / 21 litres / 87 octane	Gas / 26 litres / 87 octane	Gas / 44 litres / 87 octane	Diesel / 28 litres / No.2-D or No.1-D	Diesel / 28 / No.2-D or No.1-D
	Ignition / starting	TCI / Recoil	TCI / Recoil	TCI / Electric / Recoil	TCI / Electric / Recoil	TCI / Electric / Recoil	TCI / Electric / Recoil	TCI / Electric	Electric starting / Electronic ignition	Electric starting / Electronic ignition
	Engine oil quantity	0.6 L	1.1 L	1.1 L	1.1 L	1.1 L	1.1 L	1.55 L	2.2 L	3.4 L
	Continuous operation @ rated output	9 hrs	9.4 hrs	8.3 hrs	9 hrs	6.6 hrs	8 hrs	8 hrs	10 hrs	7 hrs
	Noise level @ 3/4 load @ 7 meters	68 dB	72.5 dB	74 dB	74 dB	74 dB	74.5 dB	80 dB	66.5 dB	69 dB
GENERAL	Unit dimensions (L x W x H)	510 x 415 x 425 mm (20.1 x 16.3 x 16.7")	670 x 510 x 527 mm (26.4 x 20.1 x 20.8")	894 x 510 x 527 mm (35.2 x 20.1 x 20.8") with battery	800 x 721 x 739 mm (31.5 x 28.4 x 29.1")	894 x 520 x 527 mm (35.2 x 20.5 x 20.7")	1070 x 720 x 800 mm (42.1 x 28.3 x 31.5")	826 x 758 x 856 mm (32.5 x 29.8 x 33.7")	1066 x 618 x 698 mm (42 x 24.3 x 27.5")	1281 x 618 x 698 mm (50.4 x 24.3 x 27.5")
	Unit dry weight (no fuel)	43 kg / 93 lb	81 kg / 179 lb	91 kg / 201 lb	106.1 kg / 234 lb	93 kg / 205 lb	106 kg / 234 lb	149 kg / 328.5 lb	235 kg / 518 lb	295 kg / 650 lb
UNIT FEATURES	Brush type	Brushless	Brushless	Brushless	Brushless	Brushless	Brushless	Brush type	Brushless	Brushless
	Electronic + Non-fuse circuit breaker system	•	•	•	•	•	•	•	•	•
	Volt meter	•	•	•	•	•	•	•	•	•
	Dual voltage		•	•	•	•	•	•	•	•
	Auto Choke			•	•	•	•	•		
	Auto Warm-up									
	Economy Control System		•	•	•	•	•	•		
	Pilot lamps (AC output)					•		•		•
	Low Oil Warning Light		•	•		•		•		
	Hour meter				•		•	•	•	•
	Oil Watch Warning System	•	•	•	•	•	•	•	•	•
	Fuel level gauge	•	•	•	•	•	•	•	•	•
	Fuel petcock (on - off)	•	•	•	•	•	•	•	•	•
	Noise Block (silent type "body" design)									
	Spark arrestor									
Yamaha Boost Technology (YBT)										
Twist lock, single 3-prong receptacle	•	•	•	•	•	•	•	•	•	
ACCESSORIES	Wheel kit	2-wheels (optional)	2-wheels (optional)	2-wheels (optional)	2-wheels (std)	2-wheels (optional)	2-wheels (std)	4-wheels (std, not shown)		
	Remote starter							Optional		
WARRANTY	Personal use	3-year limited	3-year limited	3-year limited	3-year limited	3-year limited	3-year limited	3-year limited	3-year limited	3-year limited
	Commercial use	3-year limited	3-year limited	3-year limited	3-year limited	3-year limited	3-year limited	3-year limited	3-year limited	3-year limited

/// YAMAHA-MOTOR.CA



CONQUER OUTDOORS

Due to Yamaha's ongoing commitment to product development, features and specifications may be subject to change without notice. Models used herein are not as exactly as shown. Yamaha recommends that you read your owner's manual completely before operating your generator, water pump or pressure washer. To ensure optimum performance, check the maximum wattage output of the generator selected against the maximum wattage requirement of the tool or appliance to be used. For the most up-to-date product information, visit your local Yamaha dealer.

Yamaha Motor Canada Ltd. reserves the right, at any time, to discontinue or change specifications, prices, designs, features, accessories or equipment without incurring any obligation or liability. Although the content of this brochure is believed to be accurate at time of printing, precision cannot be guaranteed. Some images depicted herein may include optional equipment or are sold separately. Prices are based on Manufacturer's Suggested Retail Prices. Dealers are at liberty to set their own pricing. Taxes and installation of accessories are not included in prices shown. See your Yamaha dealer for the most up-to-date and accurate information.

This document contains many of the valuable trademarks and service marks owned and used by Yamaha throughout the world. This document may also contain references to other company, brand, and product names that may be the trademarks/service marks of their respective owners. These company, brand, and product names are used herein for identification purposes only, and references to any names, marks, products or services of third parties do not constitute or imply endorsement, sponsorship or recommendation of the third party or the products or services.

Yamaha Motor Canada Ltd. 480 Gordon Baker Road, Toronto, ON M2H 3B4



Printed in Canada 10/14
MKG-15PPE-FL-01

