



SC100

SATELLITE CONTROLLER



MODEL 3187

SERVICE
&
PARTS
MANUAL

TABLE OF CONTENTS

SERVICE MANUAL	1
Specifications	2
Electrical	2
Weight	2
Dimensions	2
Factory Options	2
Introduction	2
Component Identification	3
Unpacking.....	4
Pre-Installation Requirements	4
Grounding (Earthing) & Electrical	5
Assembly & Installation	6
Controller	14
Programming	14
Default Configuration.....	15
For FF-2000 Food (32°F to 41°F)	
Settings Only	16
Set Price.....	17
Test Vend.....	17
Display Working Motors.....	18
Accounting	18
POP Display Window	19
Door Lock & Keys	19
Schematic	20

PARTS MANUAL.....	23
Order Information.....	24
Minimum Order.....	24
Payment.....	24
To Order By Mail.....	24
To Order by FAX.....	24
To Order by Phone.....	25
To Order On The Web.....	25
Returns	25
Limitation of Liability	25
Questions	25
Final Assembly.....	26
Cabinet Parts	27
Small Parts Package	28
Service Package	28
Controller Panel Assembly	29
Door Parts	30
Coin Insert Assembly.....	32
Coin Mech - Options.....	33
Validator - Card Reader - Options	33

Please find the identification plate located on the backside of the cabinet, and record the model and serial numbers on the space below.

MODEL NUMBER: _____

SERIAL NUMBER: _____

The model and serial numbers will aid us in providing you with correct and efficient service or parts information for your machine should that need arise.

SERVICE MANUAL

SPECIFICATIONS

Model 3187 For Indoor Use Only

ELECTRICAL

- 115V, 1.2 Amps, 60 Hz
- (220V Option)

WEIGHT

- 175 Pounds [79.4 kg]

DIMENSIONS

- Cabinet Width: 11-1/8" [28.3 cm]
- Door Width: 12" [30.5 cm]
- Depth: 33-3/8" [84.8 cm]
- Height: 72" [183 cm]

FACTORY OPTIONS

- POP Option
- Language Option
- Coin Mech Option
- Validator Option

INTRODUCTION

This manual contains instructions, service and installation guidelines for the SC100 Satellite Controller.

All programming of vend functions, pricing and features are done at the controller. Changes can be made without any additional accessories or remote parts.

Selections can be priced individually from \$.05 to \$99.95 in five cent increments (U.S. currency). When adapted to accept international or foreign, the maximum vend price will be 255 times the smallest denomination of coin being accepted.

Cash accountability records Total Cash transactions and Total Vend cycles performed by the vendor. Information for individual selections, complete rows or total machine can be compiled and used for inventory and ordering records.

Electrical malfunctions are recorded and displayed when the machine is placed in Service Mode. Non-functional motors or selections will continue to operate if other motors become non-functional.

Each SC100 Satellite Controller has the capability of supporting a "satellite" vending machine, such as a Can Vendor, Food Merchandiser

(Menu Mart II), or Cold/Frozen Satellite Food Vendor. The satellite vendor utilizes the SC100 Satellite Controller's existing controller, coin mechanism, bill validator

If you have any questions pertaining to the information in the manual, replacement parts or the operation of the vendor, then you should contact your local distributor or:

VendNet™

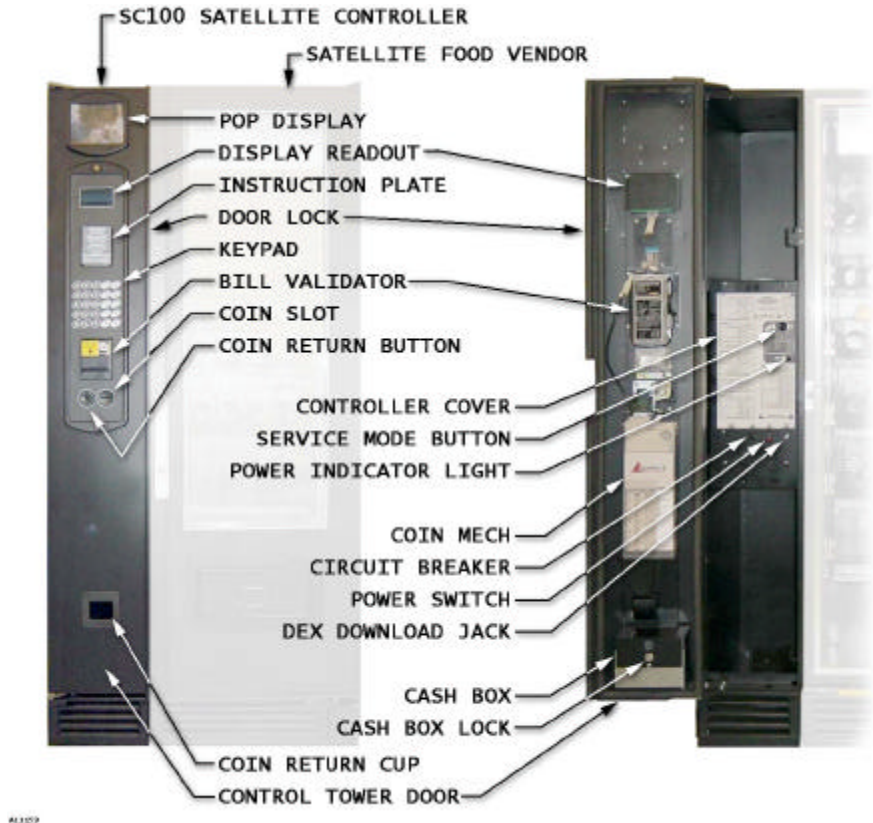
165 North 10th Street
Waukee, Iowa 50263
United States of America

Phone: (515) 274-3641
Parts Fax: (515) 987-4447
Sales Fax: (515) 274-0390
Email: vendnet@vendnetusa.com
Website: <http://www.vendnetusa.com>

and keypad to perform the vend functions. For details on the satellite vendor, refer to the service manual pertaining to the specific vendor.

This manual should be read thoroughly in order to become familiar with the functions and features of the SC100. The initial set-up of a vending machine is a very important step of insuring that the equipment operates in a trouble-free manner. Following the instructions at the initial installation of the machine will avoid service problems and minimize set-up time.

COMPONENT IDENTIFICATION



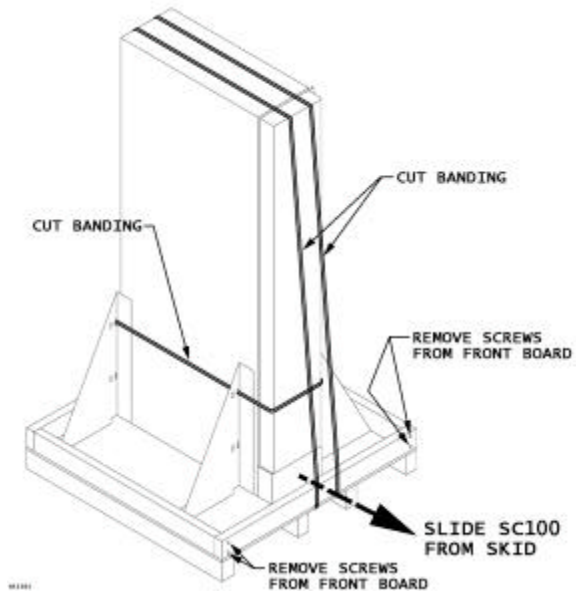
UNPACKING

This machine was thoroughly inspected before leaving the factory and the delivering carrier has accepted this vendor as their responsibility. **Note any damage or irregularities at the time of delivery and report them to the carrier.** Request a written inspection report from the claims inspector to file any claim for damage. File the claim with the carrier (not the manufacturer) within 15 days after receipt of the machine.

Carefully remove the outside packing material so as not to damage the finish or exterior of the machine. Inspect the machine for concealed shipping damage. Report any damage hidden by shipping material directly to the delivering carrier on a hidden damage report.

Record the model number and serial number of the vendor for your records. These numbers can be found on the Serial Plate on the rear of the cabinet and/or inside the SC100. Refer to these numbers on all correspondence and inquiries pertaining to SC100.

Cut the plastic banding around the SC100. Remove the screws from the front board of the shipping skid. Slide the SC100 forward to remove from the skid.



PRE-INSTALLATION REQUIREMENTS

The SC100 and the Satellite Food Vendor in its place of operation should be no further than nine feet (9 ft.) from the power outlet or receptacle. The doors must open fully without interference. Most satellite units must have at least six inches (6" in.) of space between the back of the vendor and any wall or obstruction for proper air circulation. All leg levelers must touch the floor. The vendor must be level for proper operation and acceptance of coins through the coin mechanism.

Retrieve the keys to the SC100 from the coin return cup. Open the outer door and remove all internal packing material.

Consult local, state and federal codes and regulations before installation of the vendor.

GROUNDING (EARTHING) & ELECTRICAL

Before connecting the vendor, the integrity of the main electrical supply must be checked for correct polarity, presence of ground (earth) and correct voltage. These checks should be repeated at six (6) month intervals with the routine safety electrical testing of the vendor itself.

To verify that the receptacle is properly grounded and polarized, insert one probe of a Multi-Meter (set to check AC line voltage) or a test light in the ground terminal (hole) and the other probe into the hot terminal of the outlet.

If the receptacle is not properly grounded or polarized, you should contact a licensed electrician to correctly polarize and/or ground the receptacle to ensure safe operation.

A noise suppressor (line filter) has been installed in this machine to compensate for any mains signal noise that could interfere with the normal operation of the controller.

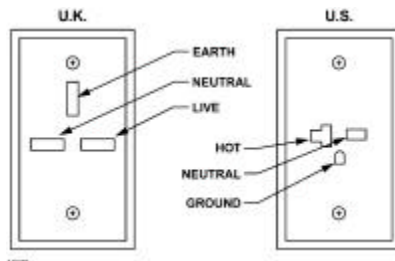


Figure 1. 230 Volt Outlets

For proper operation of any equipment utilizing electronically controlled components, the equipment should be placed on an isolated or dedicated noise-free circuit, properly polarized and grounded.

Refer to **Specifications** on page 2 to determine circuit amperage and protection.

Shown in **Figure 2** are two properly grounded and polarized wall outlets. **Figure 1** shows two 230-volt wall outlets. **Figure 1** shows a 115-volt, two-wire outlet with a three-plug adapter in place.

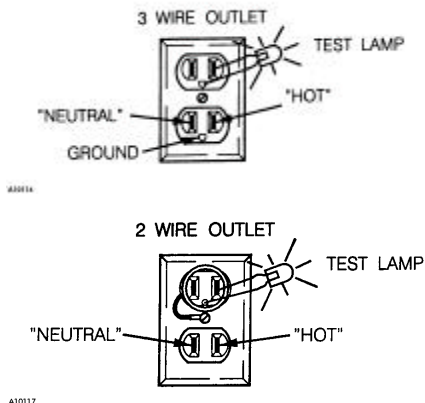


Figure 2 115 Volt Outlets

ASSEMBLY & INSTALLATION

SAFETY & WARNING

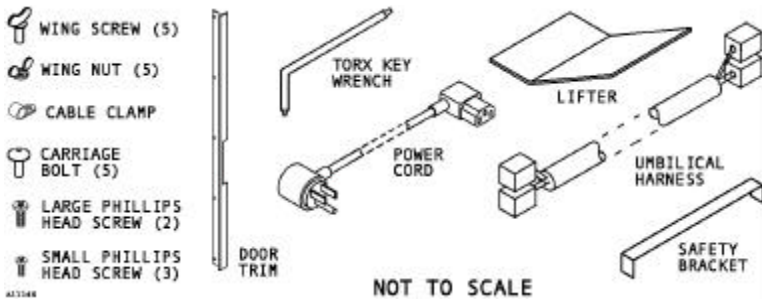
Always disconnect power before servicing.

1 TOOLS NEEDED

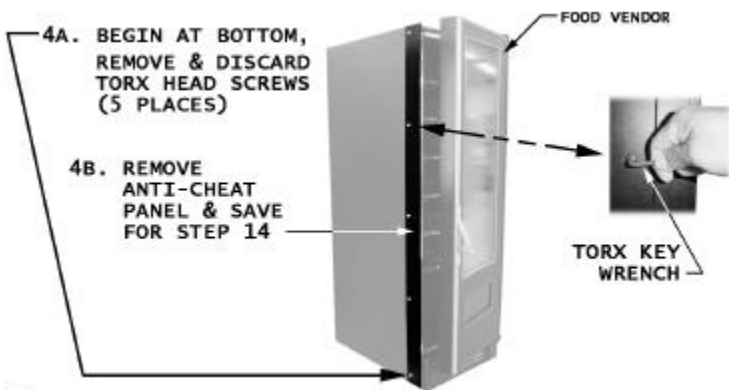
- Phillips Screw Driver

- 2 **DO NOT** CONNECT POWER TO THE SC100.
DO NOT CONNECT POWER TO THE SATELLITE FOOD VENDOR.

- 3 REMOVE NEW DOOR TRIM & SAFETY BRACKET FROM INSIDE THE SC100 IDENTIFY CONTENTS OF SMALL PARTS PACKAGE.

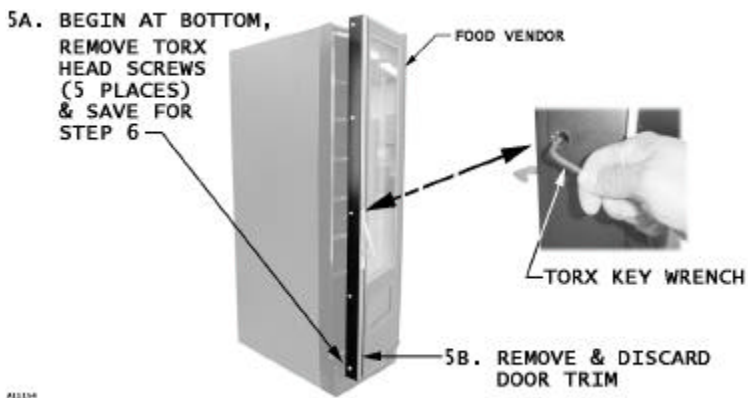


**4 REMOVE ANTI-CHEAT PANEL FROM FOOD VENDOR
(ANTI-CHEAT PANEL WILL BE RE-USED ON STEP 14).**



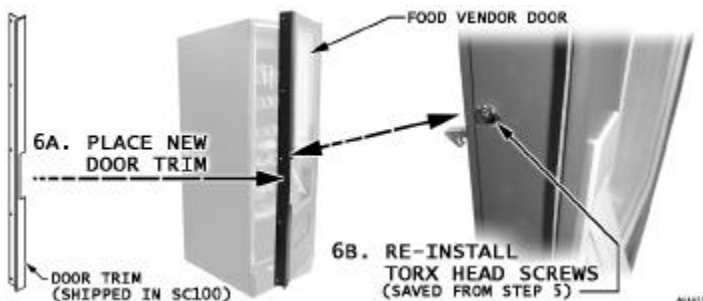
413103

**5 REMOVE DOOR TRIM FROM FOOD VENDOR
(DOOR TRIM IS NO LONGER NEEDED).**

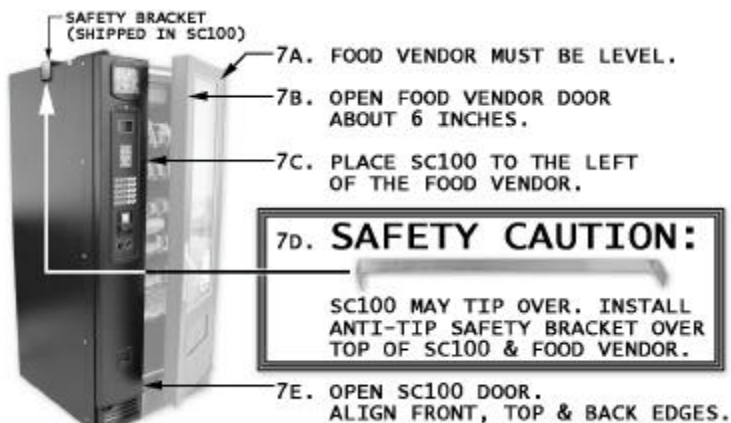


413104

6 INSTALL NEW DOOR TRIM ON FOOD VENDOR DOOR
(NEW DOOR TRIM SHIPPED INSIDE SC100).



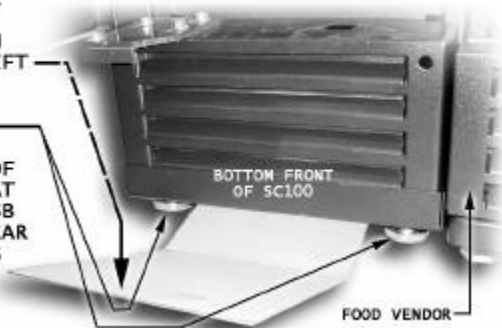
7 POSITION SC100 TO FOOD VENDOR. INSTALL SAFETY BRACKET.



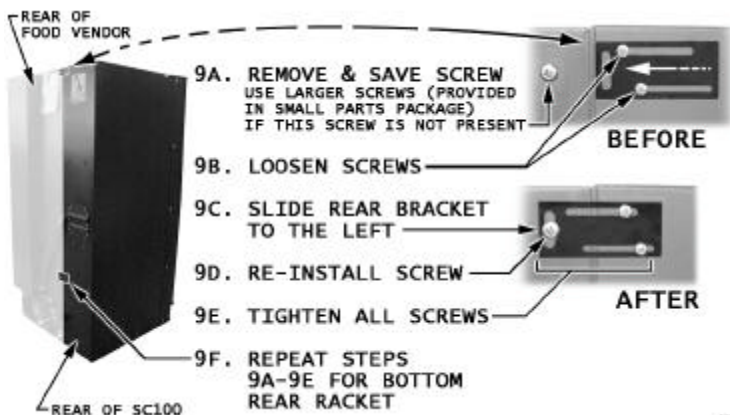
8 ADJUST SC100 FRONT & REAR LEG LEVELERS.

**SC100 MUST BE LEVEL AT THE TOP,
STABLE AND ALIGNED WITH FOOD VENDOR**

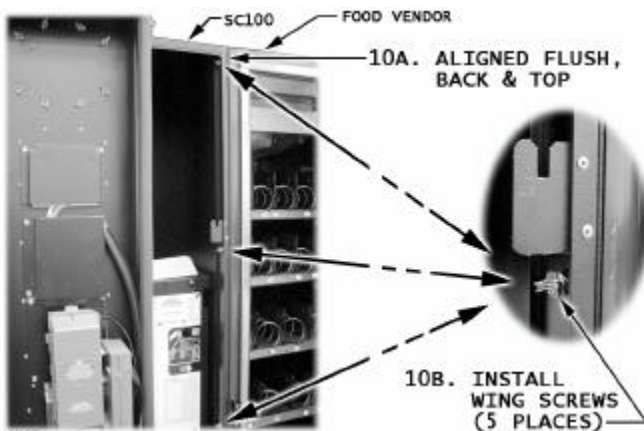
- 8A. SLIDE LIFTER UNDER SC100, THEN STEP ON LIFTER TO LIFT
- 8B. ADJUST LEG LEVELERS
- 8C. GO TO REAR OF SC100, REPEAT STEPS 8A & 8B TO ADJUST REAR LEG LEVELERS



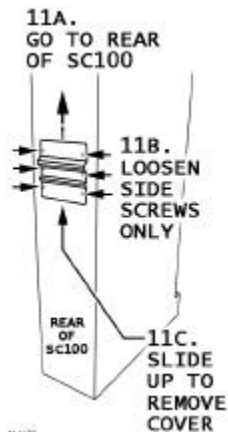
9 ATTACH BOTH TOP & BOTTOM BRACKETS (LOCATED AT REAR OF SC100).



10 SECURE SC100 TO FOOD VENDOR.



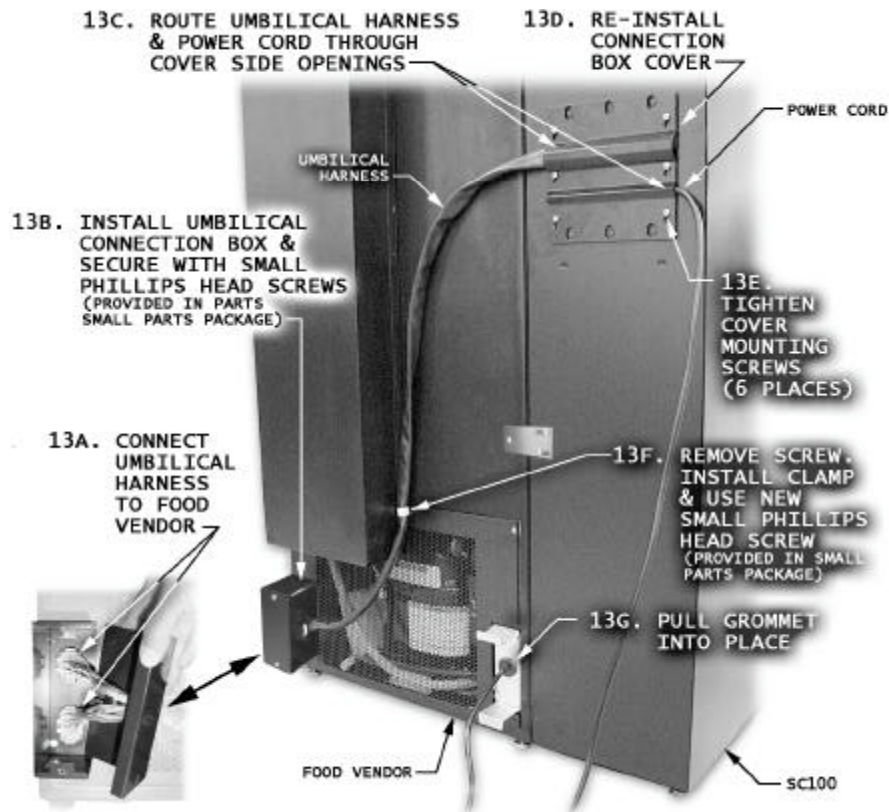
11 REMOVE COVER.



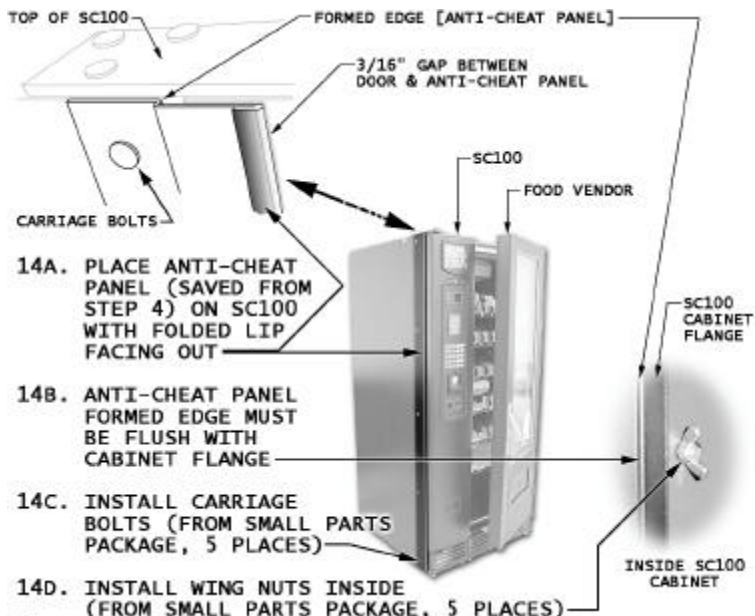
12 CONNECT UMBILICAL HARNESS & POWER CORD TO SC100.



13 CONNECT UMBILICAL HARNESS TO FOOD VENDOR & INSTALL CLAMP. RE-INSTALL SC100 COVER.



14 INSTALL ANTI-CHEAT PANEL TO LEFT SIDE OF SC100.



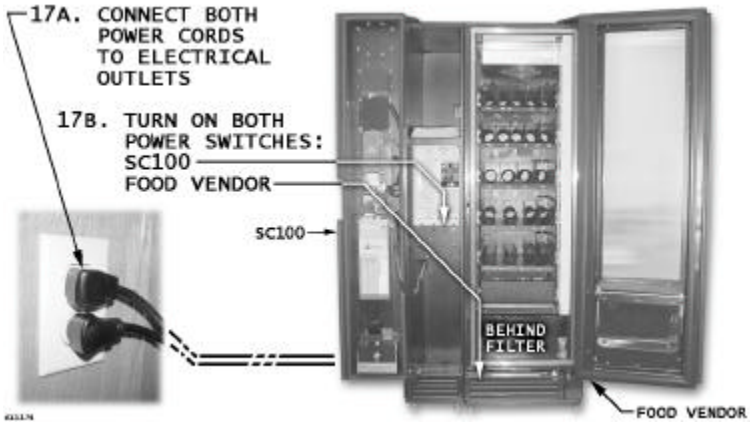
15 CLOSE DOORS.



16 INSTALL CLAMP AND COVER.



17 CONNECT POWER TO SC100 & FOOD VENDOR.
TURN ON POWER TO BOTH.



18 PROGRAMMING.

Continue with price setting and other controller programming instructions on page 14. Refer to Food Vendor service manual for product loading instructions.

Important!

The **SC100** is factory programmed for a **FF2000 Frozen Satellite Food Vendor** Model 3182.

If the **Frozen Satellite Food Vendor** is to be used for vending of cold food [32°F to 41°F] or slackening frozen food [soft freeze] (15° an below) OR if connecting to a different satellite vendor, then the **SC100** must be reprogrammed. Follow **DEFAULT CONFIGURATION** programming instructions on page 14. Refer to Satellite Food Vendor service manual for product loading information.

CONTROLLER

The Controller is located behind the controller cover. The Service Mode button is located on the right side of the controller and can be accessed through a hole in the cover.



Figure 3. Service Mode Button

PROGRAMMING

Also refer to attached installation instructions 4212876 for programming instructions. For additional controller Instructions refer to Service Manual Addendum 4212619.

IMPORTANT

The SC100 is factory programmed (configured) for a FF2000 Frozen Satellite Food Vendor Model 3182.

If the Frozen Satellite Food Vendor is to be used for vending of cold food or slack food products OR if connecting to a different satellite vendor, then the SC100 must be reprogrammed. Refer to default configuration instructions on this section.


DEFAULT CONFIGURATION

Note: Setting defaults will change all pricing to \$.50 (10 x least coin) and **OPTICS** will need to be reset if iVend™ is present.

STEP	DISPLAY
1. Press Service Mode Button <input type="checkbox"/> .	<i>DI AGNOSE</i>
2. Press <input type="checkbox"/> , <input type="checkbox"/> , <input type="checkbox"/> .	<i>MENU 3</i>
3. Press <input type="checkbox"/> , <input type="checkbox"/> .	<i>DEFAULT</i>
4. Press <input type="checkbox"/> . If satellite is CF-1000 Model 3162 then press <input type="checkbox"/> or <input type="checkbox"/> until FOOD (32°F to 41°F) is displayed. If satellite is FF-2000 Model 3182 then press <input type="checkbox"/> or <input type="checkbox"/> until FOOD (32°F to 41°F), or SLACK (15°F and below), or FROZEN (0°F and below) is displayed. NOTE: <i>CF-1000 Model 3162 can only be set to FOOD (32°F to 41°F).</i> <i>FF-2000 Model 3182 can be set to FOOD (32°F to 41°F), SLACK (15°F and below) or FROZEN (0°F and below).</i>	 <i>SNACK</i> * <i>COMBO</i> * <i>CHI LLED</i> * <i>CLO FRONT*</i> <i>FOOD</i> * <i>SLACK</i> * <i>FROZEN</i> *
6. Press <input type="checkbox"/> to save.	<i>DEFAULT</i>
7. Press Service Mode Button <input type="checkbox"/> .	(Sales Mode)

FOR FF-2000 FOOD (32°F TO 41°F) SETTINGS ONLY

If FF-2000 Model 3182 is to be used for vending cold food (32°F to 41°F) products, then default configuration must be set to **FOOD** (32°F to 41°F) [see **DEFAULT CONFIGURATION** on page 15] and set **SENSOR2** as follows:

STEP	DISPLAY
1.	Press Service Mode Button  <i>DIAGNOSE</i>


	Press A , B , A . <i>MENU 3</i>
2.	Press B , C , C . <i>SHUTDOWN</i>
	Press C , B , C , C . <i>SENSOR2</i>

3.	Press B . <i>OFF</i>



4.	If <i>ON</i> is displayed, go to step 6 . If <i>OFF</i> is displayed, then press B twice to turn to <i>ON</i> *.
5.	Press D to save. <i>ON</i>

6.	Press C . <i>SET POINT</i>
7.	Press B . <i>33F</i>
8.	Press C repeatedly until <i>-20F</i> displays. <i>-20F</i>



9.	Press D to save. <i>SET POINT</i>

10.	Press Service Mode Button  . <i>(Sales Mode)</i>

SET PRICE

STEP	DISPLAY
1. Press Service Mode Button  .	<i>DIAGNOSE</i>
2. Press A , B , C .	<i>PRICE</i>
Press B , B .	<i>SELECT --</i>
3. Press selection letter and number on keypad OR press starting row letter and ending row letter of selections on keypad <i>Example:</i> Press H 1 for selection <i>H1</i> or press H L for selection rows <i>H through L</i> .	<i>SELECT H1</i>
4. Press D .	<i>A1\$000. 50</i>
5. Press number keys on keypad to set price for selection(s).	
6. Press D to save.	<i>SELECT --</i>
7. Repeat steps 3 through 6 for other selections.	
8. Press Service Mode Button  .	(Sales Mode)

TEST VEND

STEP	DISPLAY
1. Press Service Mode Button  .	<i>DIAGNOSE</i>
2. Press A , A , B .	<i>TEST VEND</i>
Press B .	<i>SELECT --</i>
3. Press selection letter and number on keypad OR press beginning and ending row letters of selections on keypad. <i>Example</i> Press A 1 for selection <i>A1</i> or press A C for selection rows <i>A-B-C</i> .	<i>SELECT A1</i>
4. Press D .	<i>A1\$000. 50</i>
<i>The selection and price will display with the test vend. A triple beep indicates that the selection did not properly vend.</i>	<i>SELECT --</i>
5. Repeat steps 3 through 4 for other selections.	
6. Press Service Mode Button  .	(Sales Mode)

DISPLAY WORKING MOTORS

STEP	DISPLAY
1. Press Service Mode Button <input type="checkbox"/>	<i>DIAGNOSE</i>
2. Press <input type="checkbox"/> <input type="checkbox"/> <input type="checkbox"/>	<i>MOTORS 000</i>
3. Press Service Mode Button <input type="checkbox"/>	(Sales Mode)

ACCOUNTING

To display and clear reset-able sales and vend counters.

STEP	DISPLAY
1. Press Service Mode Button <input type="checkbox"/>	<i>DIAGNOSE</i>
2. Press <input type="checkbox"/> <input type="checkbox"/> <input type="checkbox"/>	<i>HIST SALES</i>
3. Press <input type="checkbox"/> <input type="checkbox"/>	<i>RES SALES</i>
4. Press <input type="checkbox"/> to view Total Sales since last reset or else go to step 6.	<i>\$000000.00</i>
5. Press <input type="checkbox"/>	<i>RES SALES</i>
6. Press <input type="checkbox"/>	<i>RES COUNT</i>
7. Press <input type="checkbox"/> to view Total Vends since last reset or else go to step 9.	<i>00000000</i>
8. Press <input type="checkbox"/>	<i>RES COUNT</i>
9. Press <input type="checkbox"/> <input type="checkbox"/> <input type="checkbox"/>	<i>SET RANGE</i>
10. Press <input type="checkbox"/> <input type="checkbox"/>	<i>RANGEVENDS</i>
11. Press <input type="checkbox"/>	<i>CLEAR</i>
12. To clear all reset-able values press <input type="checkbox"/>	<i>CLEARED</i>
13. Press Service Mode Button <input type="checkbox"/>	(Sales Mode)

POP DISPLAY WINDOW

If necessary, the POP (point of purchase) Display Window graphic can be replaced. To replace the graphic, open the SC100 door and find the wing nuts located behind the Display Window. Remove the wing nuts. Remove the Display Window Bezel and replace the graphic. Re-install the Display Window Bezel.



Figure 4. Replacing Display Window Graphic

DOOR LOCK & KEYS

A door lock is provided to allow locking of the SC100 door separate from the satellite. This allows some security of the money in the SC100.

The door lock keys are normally shipped inside the coin cup. Turn the key clockwise to lock or counter-clockwise to unlock.

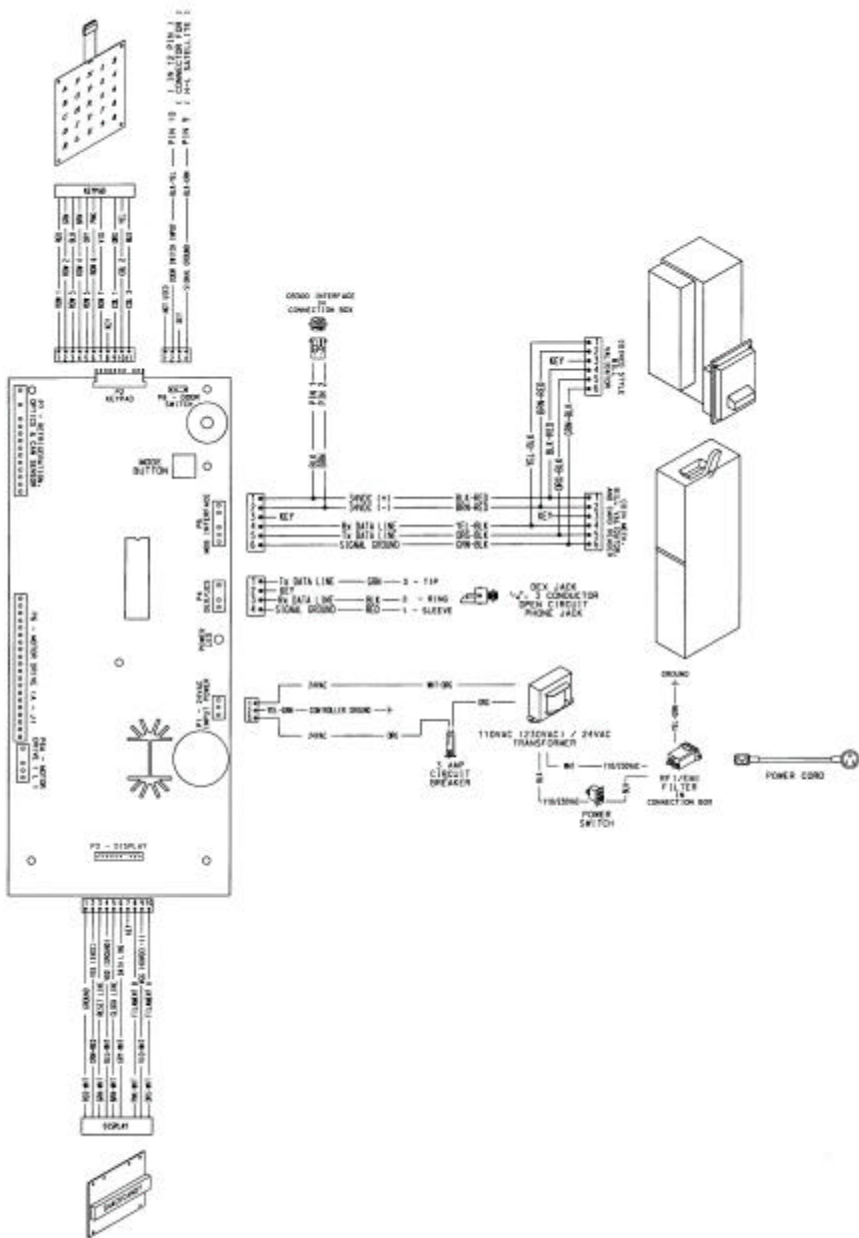
IMPORTANT

The SC100 door key must be removed before closing the satellite food vendor door.



Figure 5. Door Lock

SCHEMATIC



PARTS MANUAL

ORDER INFORMATION

You may order parts from your distributor or from VendNet™. If you have any questions when placing your order, please call and we will be happy to assist you. Please provide the following information when placing your order:

- Quantity required
- Part number
- Description of part
- Vending machine model number
- Vending machine serial number
- Shipping and billing address
- Preferred method of shipment
- Customer account number

Note:

When "right" and "left" are used with a part name, it is taken to mean that the person is facing the machine with the door closed.

MINIMUM ORDER

You may wish to inquire on prices of parts and minimum order amount at the time of your order. If you order less than the minimum, please check our catalog for other parts you may require to bring your order up to the minimum amount.

VendNet™ reserves the right to change these requirements without notice.

PAYMENT

Several payment options are available:

- MASTER CARD
- VISA
- OPEN ACCOUNT (with approved credit)
- DISCOVER
- C.O.D.

TO ORDER BY MAIL

Order forms are available upon request or you may use your own purchase order form. You may mail your order for replacement parts by providing the necessary information as requested above to:

VendNet™
165 North 10th Street
Waukee, IA 50263-0488
USA

TO ORDER BY FAX

You may FAX your order for replacement parts by providing the necessary information as requested above to VendNet™:

1-515-987-4447

TO ORDER BY PHONE

You may call in your order for replacement part by providing the necessary information as requested above to VendNet™ Parts Department.

USA	1-888-259-9965
Canada	1-800-858-4730
Other	1-515-274-3641

TO ORDER ON THE WEB

You may go online and place an order through the internet:

<http://www.vendnetusa.com>

<http://www.vendnet.ws>

RETURNS

A restocking charge of 20% will apply to merchandise accepted by VendNet™ for return, except items processed as warranty. A Return Form clearly stating the reason for return must accompany all items returned. Return Forms are available upon request from VendNet™. Returns are to be shipped freight prepaid to:

VendNet™
165 North 10th Street
Waukee, IA 50263-0488

LIMITATION OF LIABILITY

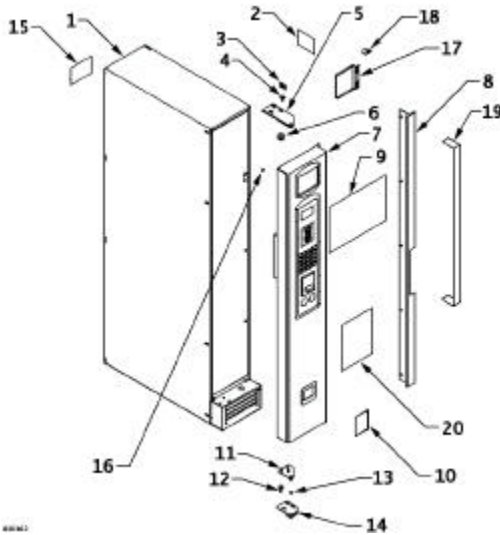
VendNet™ shall not be liable for any injury, loss or damage, whether direct, incidental or consequential arising out of the use of or the inability to use any part, parts or products sold by VendNet™. The remedies of the buyer set forth herein are exclusive, and the liability of VendNet™. With respect to any contract or sale or anything done in connection herewith, whether in contract, in tort, under any warranty, or otherwise, shall not, except as expressly provided herein, exceed the price of the part, parts or products on which such liability is based. Any statements or representations about the parts or product, other than those contained herein, do not constitute warranties and shall not be relied on by the buyer and shall have no force of effect unless contained in a written agreement signed by officers of VendNet™.

QUESTIONS

If you have any questions:

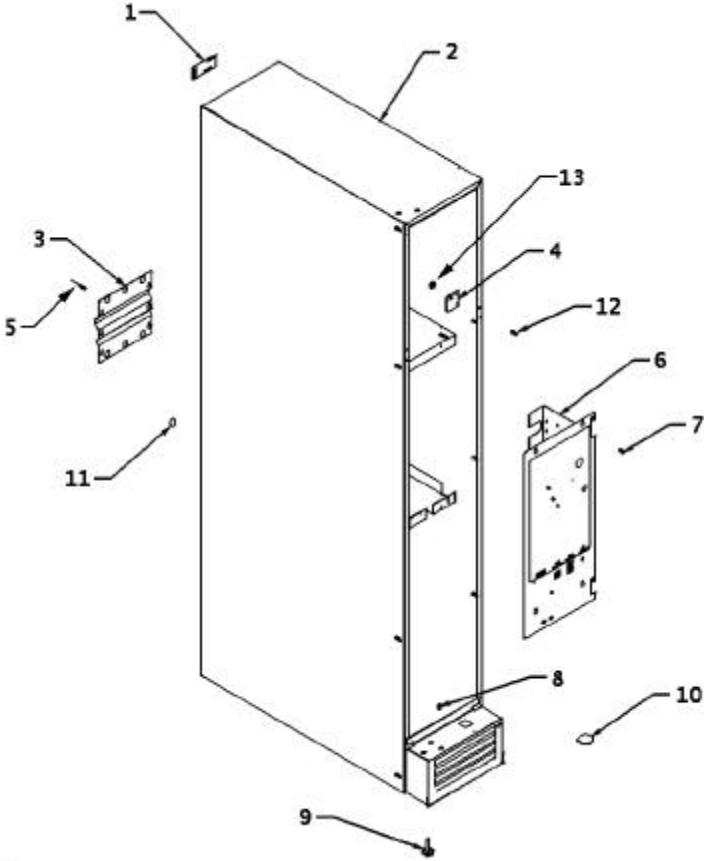
- Check our website at www.vendnetusa.com or www.vendnet.ws
- Send an email to vendnet@vendnetusa.com
- Or please call VendNet™ by phone and ask for the Parts Department.
We will be happy to assist you.

FINAL ASSEMBLY



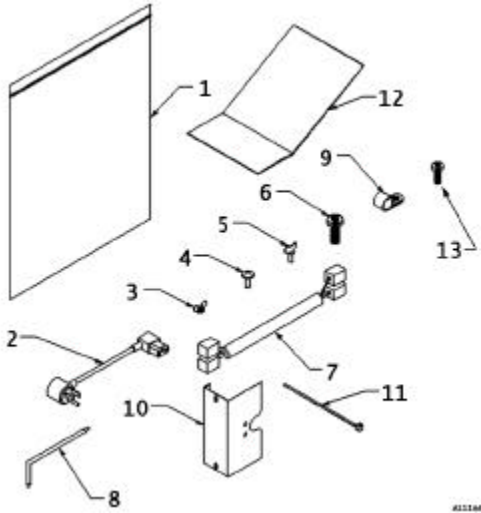
ITEM	PART NUMBER	QTY	DESCRIPTION
1	(see page 27)	1	Cabinet Parts
2	4212877	1	Build Card
3	4200032.000	1	American Flag Decal
4	4050099	3	5/16 - 18 x 3/4 Carriage Bolt
5	1216225.000xxx	1	Top Hinge Weld (specify color)
6	8810015	3	5/16 - 18 Flange Nut
7	(see page 30)	1	Door Parts
8	1216224	1	Side Trim Assembly
	4212831.000330	1	Side Trim, Wrinkle Black
	4212832.000309	1	Side Trim Retainer, Smooth Black
	4203263.500	5.5 ft.	1/4 x 1/2 Foam Tape
	7320289.000	9	6 - 32 x 1/4 Phillips Pan Head Screw
9	4212876	1	Installation Instructions
10	4060638	1	Key Bag
11	1216235.000xxx	1	Bottom Hinge Weld (specify color)
12	4201239	3	1/4 -20 x 3/4 Hex Head Cap Screws
13	4025757	2	1/4 ID Hinge Spacer
14	1216242.000xxx	1	Bottom Hinge (specify color)
15	4212913	1	Lift From Satellite Label
16	8800956	3	8 - 32 Hex Nut
17	4212942.000309	1	Door Harness Cover, Smooth Black
18	7090002.713	2	3/4" Wire Clamp
19	4213014	1	Safety Bracket
20	4213039	1	Unlocking Instructions

CABINET PARTS

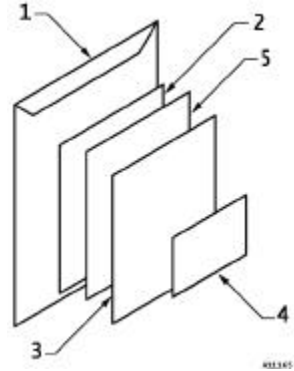


ITEM	PART NUMBER	QTY	DESCRIPTION
1	4212837.000330	4	Back Retaining Plate, Wrinkle Black
2	1214538.000xxx	1	Cabinet Weld (specify color)
3	4212844.000330	1	Connection Box Cover, Wrinkle Black
4	4212858.000330	1	Lock Stop, Wrinkle Black
5	4050667	2	1/8 Pop Rivet
6	(see page 29)	1	Controller Panel Assembly
7	8800636	22	8 - 18 x 1/2 Phillips Pan Head Screw
8	4212937.016	3	1/4 Nut-sert
9	4212842	4	1/4 - 20 x 1-1/2 Leg Leveler
10	7250135.000	2	1 - 3/8" Hole Plug
11	7250135.001	4	1/2" Hole Plug
12	4050247	2	8 - 32 x 1/2 Phillips Pan Head Machine Screw
13	8800956	2	8 - 32 Hex Nut with External Lock Washer

SMALL PARTS PACKAGE



SERVICE PACKAGE



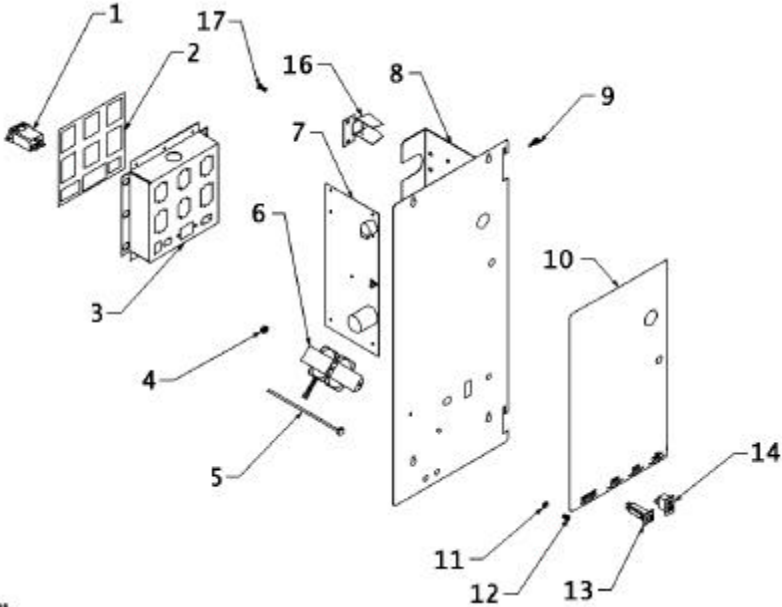
SMALL PARTS PACKAGE

ITEM	PART NUMBER	QTY	DESCRIPTION
1	8358425.1	1	10 x 13 x .002 Zip Loc Bag
2	4212825	1	Power Cord - Domestic
3	4050530	5	1/4 - 20 Wing Nut
4	4050393	5	1/4 - 20 x 3/4 Carriage Bolt
5	4212899	5	1/4 - 20 x 1/2 Wing Bolt
6	7200469.014	2	1/4 - 20 x 1/2 Phillips Round Head Machine Screw
7	4212826	1	Umbilical Harness
8	4212910	1	T27 TORX Long Arm Key
9	4060134	1	1" Cable Clamp
10	4212933	1	Umbilical Bracket Cover
11	4033712.000309	1	Cable Tie
12	4212976	1	Machine Lifter, Smooth Black
13	8800636	3	8 - 18 x 1/2 Phillips Pan Head Screw

SERVICE PACKAGE

ITEM	PART NUMBER	QTY	DESCRIPTION
1	4020697	1	Envelope
2	4206816	1	Safety Manual
3	4212875	1	Service & Parts Manual
4	4202750	1	Warranty Card
5	4212619	1	Service Manual Addendum

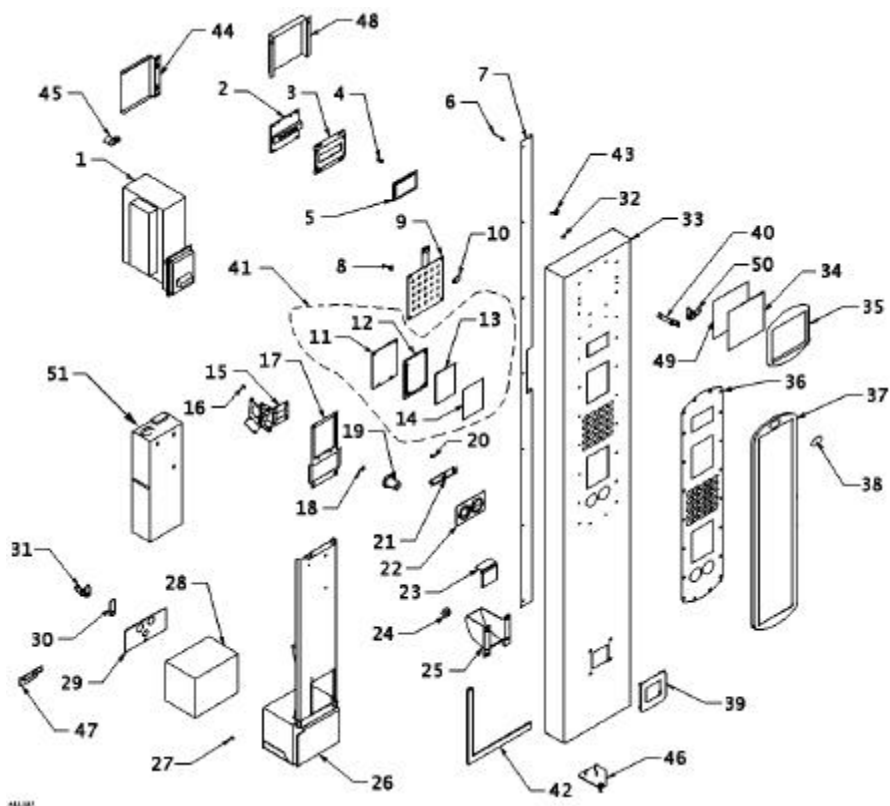
CONTROLLER PANEL ASSEMBLY



A31288

ITEM	PART NUMBER	QTY	DESCRIPTION
1	4212490.001	1	RFI Filter IEC Socket
2	4212823	1	Connection Box Label
3	4212822.000309	1	Connection Box, Smooth Black
4	8800956	2	8 - 32 Hex Nut
5	4033712	5	Cable Tie
6	4206570.000	1	Transformer, 110/24 VAC
	4206570.001	1	Transformer, 230/24 VAC
7	4209893	1	SM6 Control Board
8	1216223.000309	1	Controller Panel Weld, Smooth Black
9	4206879	7	3/8" Standoff
10	4212829	1	Control Panel Label
11	4050585	2	#8 External Tooth Lock Washer
12	4050240	2	#8 - 32 x 3/8 Phillips Pan Head Machine Screw
13	4203467.003	1	3 Amp Circuit Breaker
14	4202088	1	Switch - Rocker
15	4212830	1	Control Panel Harness (not shown)
16	4212977.000309	1	Mode Button Hood, Smooth Black
17	8800636	2	8 - 18 x 1/2 Phillips Pan Head Screw

DOOR PARTS

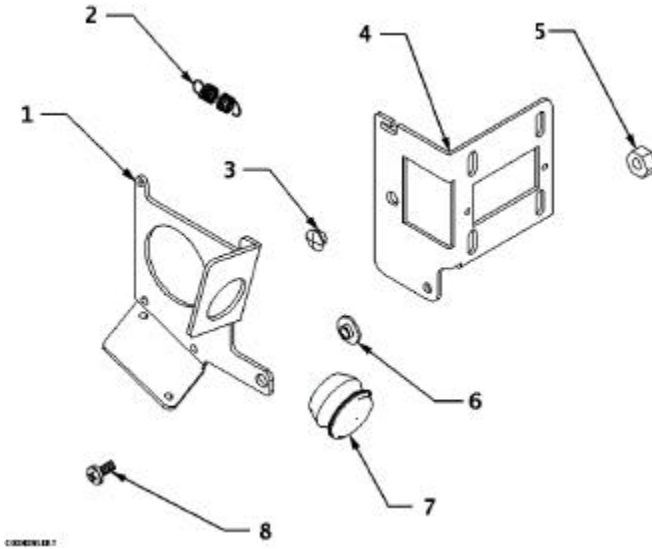


ITEM	PART NUMBER	QTY	DESCRIPTION
1	(see page 33)	1	Validator
2	4200660	1	Display
3	4210239.001309	1	Display Mount, Smooth Black
4	4206879	4	3/8 Standoff
5	4202841.009	1	Readout Window, Blue
6	4050667	7	1/8" Pop Rivet
7	4212833.000330	1	Door Retainer, Wrinkle Black
8	8800956	24	8 - 32 Hex Nut
9	1215547.000	1	Key Pad Assembly
	4210951	1	Keypad 5x5 SM6
	4210952.000309	1	Keypad Back Plate
10	4210978	25	Ellipse Button

DOOR PARTS

ITEM	PART NUMBER	QTY	DESCRIPTION
11	4201907.001309	1	Validator Plate, Smooth Black
12	4209639	1	Validator Filler
13	4209656.001309	1	POP Plate, Smooth Black
14	4210396.007	1	Filler Decal - English
15	(see page 32)	1	Coin Insert Assembly (1216187)
16	4050423	4	8 - 18 x 3/8 Phillips Pan Head Screw
17	4210954.000309	1	Insert Mount, Smooth Black
18	4209188	1	Snap Pin
19	4203187	1	Coin Return Button
20	4201942	2	6 - 20 x 3/16 Phillips Pan Head Screw
21	1212097.000950	1	Coin Chute Weld
22	4203186.004	1	Coin Insert - 1-1/8 Black (USA)
	4203186.005	1	Coin Insert - 1-3/8 Black (European)
23	4203208	1	Coin Cup Door
24	4050747	4	¼ Stamped Hex Nut
25	4203207	1	Coin Cup
26	1216233.000309	1	Mech Mount Weld, Smooth Black
27	8800636	3	8 - 18 x ½ Phillips Pan Head Screw
28	1215474	1	Coin Box Weld
29	4212892.000309	1	Coin Box Lock Plate, Smooth Black
30	4212891.000950	1	Coin Box Lock Cam
31	4060366.001	1	Coin Box Lock
32	7320289.000	30	6 - 32 x ¼ Phillips Pan Head Screw
33	1214543.000xxx	1	Door Weld (specify color)
34	4212890	1	POP Window
35	4212889.000330	1	POP Bezel, Wrinkle Black
36	4211227.001	1	Selection Decal / 2-hole
37	4211230.000330	1	Selection Bezel, Wrinkle Black
38	4212012	1	Logo Decal
39	4203209	1	Coin Cup Bezel
40	4212881.000950	1	Lock Cam
41	1215919.003	1	English Instruction Installation
42	4210935	18	Gasket (feet)
43	4201874.000	8	#8 Wing Nut
44	4212942.000309	1	Door Harness Cover, Smooth Black
45	7090002.713	2	¾" Wire Clamp
46	1216235.000xxx	1	Bottom Door Hinge Weld (varies by color)
47	4212109	1	Coin Box Handle
48	4211419.000309	1	Display Cover, Smooth Black
49	4213003	1	POP Artwork
50	4060318	1	Lock
51	(see page 33)	1	Coin Mech

COIN INSERT ASSEMBLY



ITEM	PART NUMBER	QTY	DESCRIPTION
	1216187	1	Coin Return Lever Mech
1	4212655.000950	1	Coin Return Lever
2	4021020	1	Spring
3	4209184	1	Snap Plug
4	4212653.000950	1	Coin Return Mount
5	4050511	1	8 - 32 Lock Nut
6	4030100	1	Bushing
7	4212657	1	Tubing Hole Plug
8	4050240	1	8 - 32 x 3/8 Phillips Pan Head Machine Screw

**COIN MECH -
OPTIONS**



**VALIDATOR - CARD READER -
OPTIONS**



COIN MECH - OPTIONS

ITEM	PART NUMBER	QTY	DESCRIPTION
	4200419.GX	1	Coin Mech, Coinco 9302GX
	4200419.CGX	1	Coin Mech, Coinco 9302CGX, Canada
	4206699.001	1	Coin Mech, Coinco GBP-G801 Global
	4206699.026	1	Coin Mech, Coinco MXP-G703/MDB
	4206699.037	1	Coin Mech, Jofemar E/MDB Mexico
	4206699.039	1	Coin Mech, Mars CM MDB TRC6512 D
	4206699.042	1	Coin Mech, Jofemar J200 E/MDB
	4206699.061	1	Coin Mech, Coinco DOP-F701 4 Tube
	4206699.075	1	Coin Mech, Conlux MDB CM CCM5G-4, 5 Tube (5¢ 10¢ 25¢ 25¢ \$1)
	4206699.077	1	Coin Mech, Conlux MDB CM CCM5G-1, 5 Tube (5¢ 10¢ 25¢ 25¢ 25¢)

VALIDATOR - CARD READER - OPTIONS

ITEM	PART NUMBER	QTY	DESCRIPTION
	4205536.024	1	Validator, Coinco BA32F
	4205536.061	1	Validator, Conlux NBM 3120 MDB
	4205536.063	1	Validator, Cash Code Costa Rica
	4205536.124	1	Validator, Coinco MAG32SA
	4205536.129	1	Card Reader, Cash Code MX5-MCP-ST43-ML
	4207996.007	1	Validator, Mars Val VN2502

The contents of this publication are presented for informational purposes only, and while every effort has been made to ensure their accuracy, they are not to be construed as warranties or guarantees, express or implied, regarding the products or services described herein or their use or applicability. We reserve the right to modify or improve the designs or specifications of such products at any time without notice.



VendNet™
165 North 10th Street
Waukee, Iowa 50263-0488
United States of America



	USA & Canada	International
Service	(800) 833-4411	(515) 274-3641
Parts	(888) 259-9965	
Email	vendnet@vendnetusa.com	
Web Site	www.vendnetusa.com	