

STATIONARY COMPACTORS

345HD

This 3-yard stationary compactor features a 50" x 60" clear top opening to accommodate larger items.

Features a larger clear top opening than our best selling 2 yard stationary compactor. With a 50" X 60" opening, the 345 series accommodates larger items at an attractive price. Combine that with our Guardian control system with automatic maintenance scheduler and you have an efficient, powerful, long-lasting stationary compactor.



Value Added Benefits

Reduced maintenance costs

- Guardian control system with AMS (automatic maintenance scheduler) alerts you when basic maintenance is due
- 1/2" thick ram face extends life of compactor and reduces maintenance costs

Increased safety

- Watch Dog timers prevent the power unit from overheating
- 24-volt operator controls mean the system is safer than 110-volt systems and uses less energy

Standard features included at no additional charge

- Full Container Light alerts you when trash is ready for pickup (others charge extra for this standard feature)
- No charge multi-cycle timer improves efficiency and increases compaction
- Low temperature oil feature works well in hot or cold climates*
- Internal power unit protects against inclement weather and tampering
- NEMA 4 control panel protects against windblown dust, splashing water and hose directed water
- 1 3/8" ratchet binders have 1" thick hooks to connect up to receiver containers rated at 70,000 lbs.

Ease of ownership

- Purchase, rental and leasing programs available

Warranty

- 3-1-1 warranty is a 3 year structural, 1 year parts and 1 year labor warranty

* Use of an oil heater is recommended in extreme cold conditions.



24 volt Guardian control system is UL listed



Internal power unit is protected from weather and tampering

NOTE: Remote power unit also available

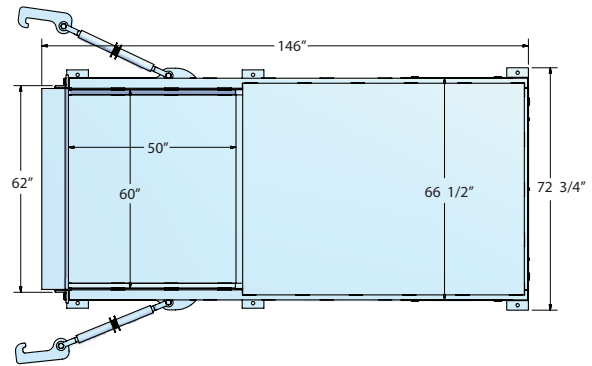
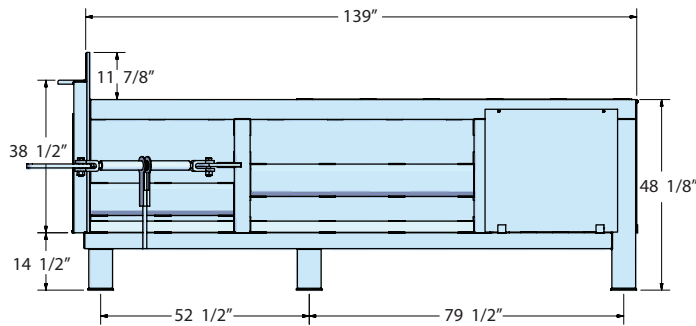


Tel: 877.468.9278
sales@wastequip.com
www.wastequip.com



STATIONARY COMPACTORS

345HD & 345XHD



Features

Standard

- 1/2" thick ram floor
- 57 second cycle time
- Heavy duty breaker bar 8" x 8" x 1" angled steel
- Full container light
- Low temperature oil
- Multi-cycle timer
- Operational and service manual
- NEMA 4 control panel protects against wind-blown dust, splashing water and hose directed water
- Primed and painted in several colors

Options

- Advance warning light
- Pressure gauge - color coded
- Guide rails with stops
- Oil heater
- Photo electric eye
- Odor control system
- Cart dumper
- Biodegradeable oil



Replacement parts
available online at
www.partsplace-inc.com

Specifications

345HD-WQ

Charge Box	Wastequip rating	3 cu. yds.
	Wastec rating	2.00 cu. yds.
	Clear top opening	50" Length x 60" Width
	Compactor weight with power unit	5,500 lbs.
Ram	Ram height	30 1/2"
	Ram penetration	14.00"
	Face plate	1/2" steel with 3/4" stiffener plates
	Base plate	3/8" steel with 3" channels at 24" spacing
	Top plate	1/4" steel with 3" channels at 12" spacing
	Side plates	1/4" steel formed plate
Compactor Head	Floor	1/2" plate with formed channels at 12" spacing
	Sides	1/4" plate with 5" x 3" top tube and formed horizontal and vertical stiffeners
	Breaker bar	8" x 8" x 1" angle
	Top deck	12 gauge top deck sheet standard with diagonal tube bracing for stability
Electrical	Electric motor, fan cooled	10 hp
	Voltage	208/230/460, 3 phase 60 Hz
	Power box	UL rated, TEFC housing
	Automated cycle operation	Turn key switch-ram extends, retracts & stops automatically
Hydraulic Performance	Pump	14.1 gpm
	Pump type	Fixed gear
	Hydraulic oil tank	25 gallon reservoir
	Cylinder bore/rod/stroke	6" bore, 2.5" rod, 55" stroke
	Normal ram face pressure	48,040 lbs at 1,700 psi
	Maximum ram face pressure	56,520 lbs at 2,000 psi
	Normal ram psi	26.4 psi
	Maximum ram psi	31.0 psi
	Cubic yard per hour	105
	Power unit location	Integral
	Cycle time	57 seconds

Standard Color Choices*



* Colors shown are as accurate as printing allows. The actual color is subject to variation from the printed color sample. Color choices vary by plant location. Please contact your local sales representative for available colors. Custom colors are available upon request and are subject to an additional charge.



Wastequip is the leading North American manufacturer of waste and recycling equipment for collecting, processing and transporting recyclables and solid or liquid waste.

August 2010 © Wastequip, all rights reserved. Specifications subject to improvement without notice. Equipment displayed should be operated by properly trained personnel. Operators should become familiar with OSHA, ANSI and any other applicable standards or laws for using this equipment. Improper use, misuse, or lack of maintenance could cause injury to people and/or property. Photos used in the literature are illustrative only. We assume no liability or responsibility for proper training/operation of equipment not manufactured by Wastequip. We reserve the right to make changes at any time without notice. Information contained within this literature is intended to be the most accurate available at time of printing.

WQP026-082010