



INSTRUCTIONS

-J04730

REV. 2015-10-05

FL ADJUSTABLE RIDER BACKREST MOUNTING HARDWARE KIT

GENERAL

Kit Number

52596-09A

Models

For model fitment information, see the P&A Retail Catalog or the Parts and Accessories section of www.harley-davidson.com (English only).

Installation Requirements

Separate purchase of an FL Adjustable Rider Backrest Kit is required for installation of this kit. See a Harley-Davidson Dealer.

WARNING

The rider's safety depends upon the correct installation of this kit. If the procedure is not within your capabilities or you do not have the correct tools, have a Harley-Davidson dealer perform the installation. Improper installation of this kit could result in death or serious injury. (00308a)

NOTE

This instruction sheet references service manual information. A service manual for your model motorcycle is required for this installation. One is available from a Harley-Davidson Dealer.

Kit Contents

See Figure 13 and Table 1.

REMOVAL

1. See the service manual. Remove seat. Save hardware.
2. See the service manual. Remove left side cover.
3. See Figure 1. Remove nuts (1). Leave washers (2) and studs (3) in place.

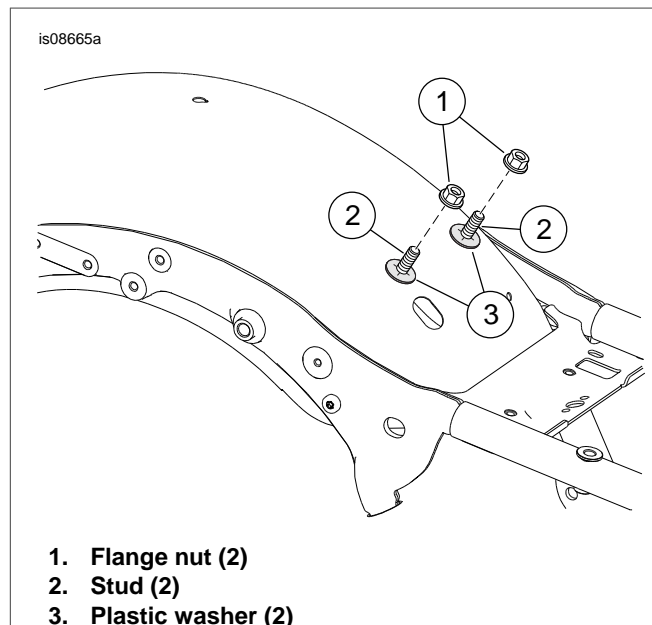


Figure 1. Mounting Hardware

4. See Figure 2. Remove spark plug wire clip (1).

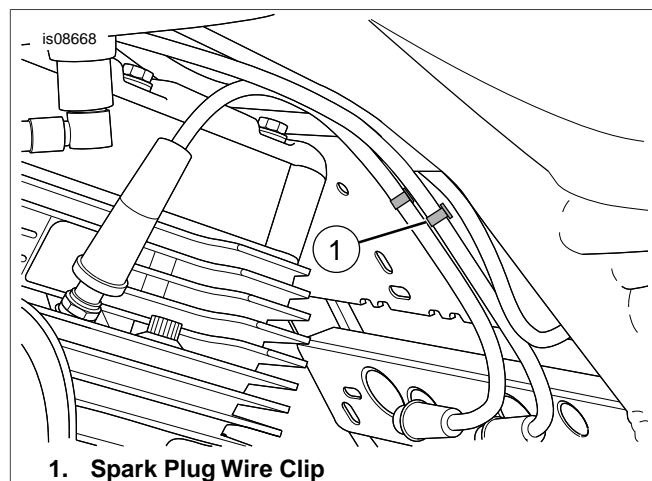


Figure 2. Spark Plug Wire Clip

5. **Models with Mid-Frame Air Deflectors:** Remove upper left side mounting hardware.

INSTALLATION

1. See Figure 3. Install clip nut (1) in mounting hole (2). Align clip with alignment hole (3).

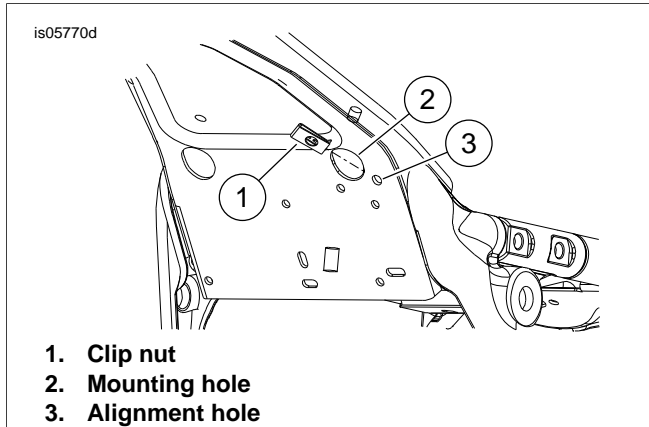


Figure 3. Install Clip Nut

2. See Figure 4. Attach bracket (2) to mounting base (3). Install screw (1) and nut (4) as shown. Leave fasteners loose.

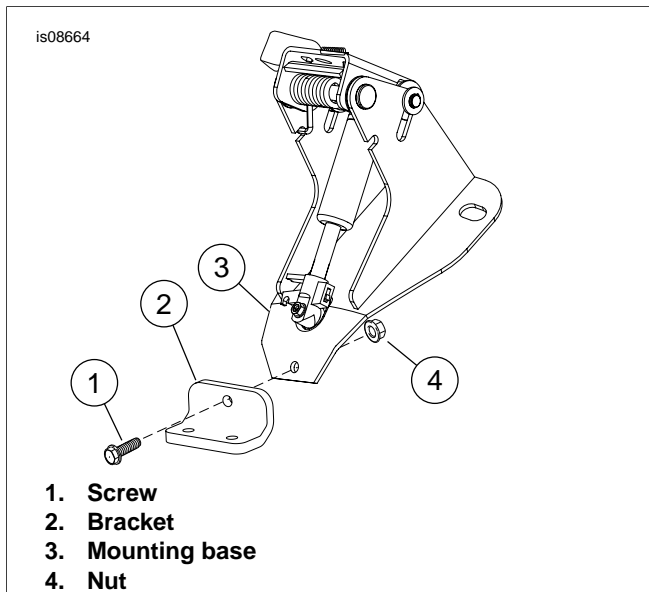


Figure 4. Install bracket

3. See Figure 5. Set mounting bracket (1) over studs and plastic washer See Figure 1. Install screws and nuts (2) as shown. Leave fasteners loose. Verify electrical connector moves freely.
4. Install washers (4) and nuts (6). Tighten to 60-96 **in-lbs** (7-11 Nm).
5. Tighten screws and nuts (2) 6-8 ft-lbs (8-11 Nm).

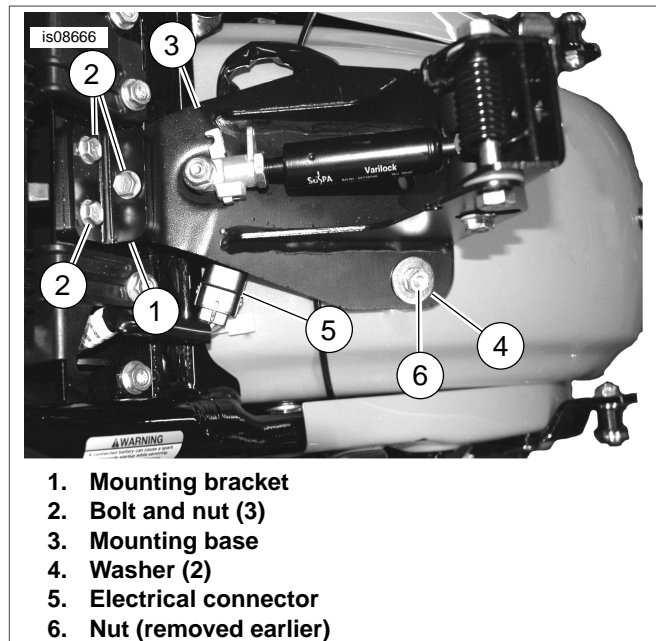


Figure 5. Install Backrest Bracket

6. See Figure 13. Install actuator handle (13) with cable to actuator handle bracket (12) so the cable is pointing down when installed. Secure with screws (9) and nuts (11).
7. **Models without Mid-Frame Air Deflector** See Figure 6. Slide the flat side of the actuator assembly (1) behind the spark plug wires. Verify the hook/bent tab on the bracket engages with the cross-member plate. Install screw (4) and washer (5). Tighten screw to 45-55 **in-lbs** (5.1-6.2 Nm).

Models with Mid-Frame Air Deflector See Figure 7. Slide the flat side of the actuator assembly (1) behind the spark plug wires. Verify the hook/bent tab on the bracket engages with the cross-member plate. Install screw (4) and washer (5). Tighten screw to 25-35 **in-lbs** (2.8-3.9 Nm).

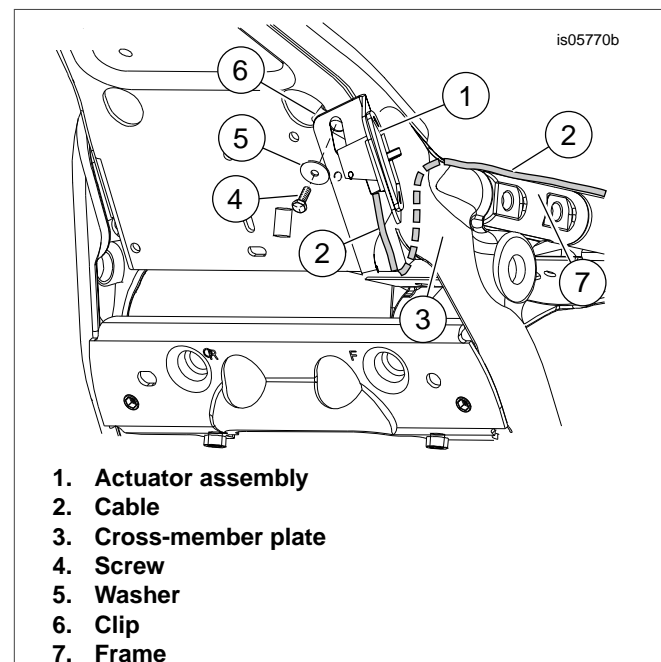


Figure 6. Install Actuator Assembly

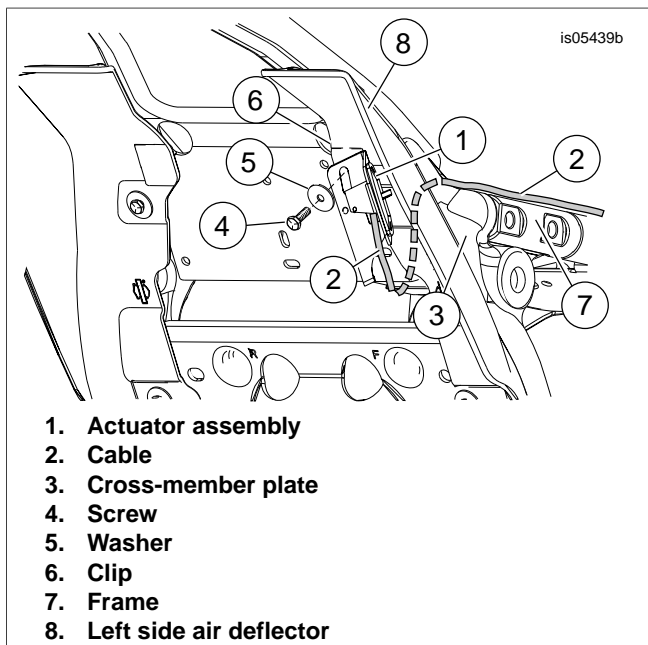


Figure 7. Installing Actuator Assembly with Mid-Frame Air Deflector

8. Clean an area on the adjustment handle bracket in the approximate location where the spark plug wire clip was removed. Use a solution of 50% alcohol and 50% water.
9. See Figure 13. Install wire guide (8) onto the bracket. Route the spark plug wire through the clip. Fold clip to secure the spark plug wire.
10. See Figure 8. Route the cable (2) under cross-member. Continue routing cable (2) between fuse/electrical box (4) and frame (5) to the top of the rear fender and to the backrest bracket.

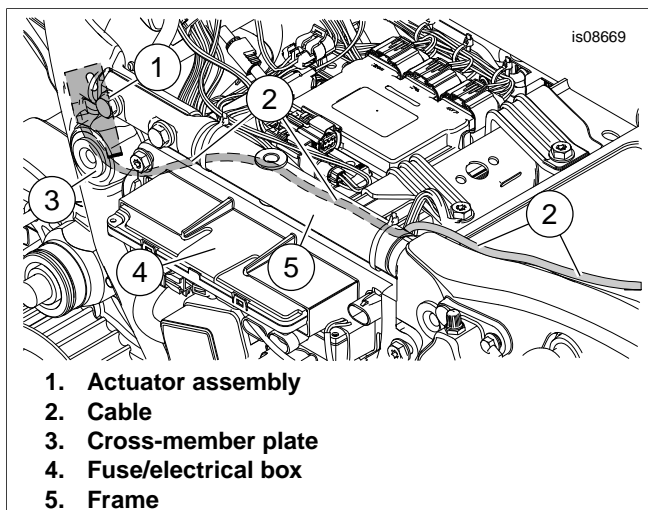


Figure 8. Cable Routing

11. See Figure 9. Attach the release cable (1) to the backrest mounting bracket (2) as shown. Carefully secure the cable to the shaft of the gas spring (4) with the provided cable strap (3). Do not over-tighten the cable strap.

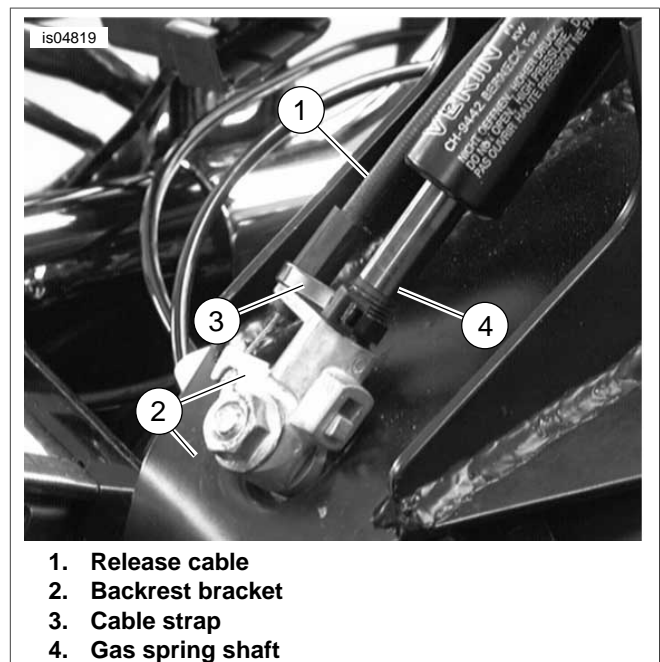


Figure 9. Attach Cable to Backrest Bracket

SEAT PROTECTOR INSTALLATION

NOTE

The purpose of the seat protector is to prevent premature wear between the backrest mechanism and the underside of the seat. If the seat protector is placed too low in the seat opening, the backrest mechanism, when pushed forward, may snag the upper edge of the protector and be difficult to return upright.

1. Temporarily install the seat over the backrest mechanism.
2. Install but do not tighten the seat mounting hardware.
3. Install the rider backrest following the instructions under BACKREST INSTALLATION.
4. See Figure 13. Obtain seat protector (16).
5. Apply masking tape to seat protector as an aid to locate the protector in the seat.
 - a. Apply masking tape to the smooth, non-adhesive side of the seat protector.
 - b. Extend masking tape 2 in (5.1 cm) past each edge of the shorter side of the seat protector.
6. Insert the seat protector from above between the rear of the seat opening and the backrest mechanism all the way to the edge with the tape. Do not tape protector to seat now.
7. See Figure 12. With the backrest and seat in place, push the backrest to the fully forward position (3). The backrest mechanism presses against the underside of the seat and against the inserted seat protector.
8. With backrest mechanism fully forward, adjust the seat protector so the upper-most edge is positioned roughly 1/2 in (13 mm) above the rear edge of the mechanism within the seat pocket.
9. Temporarily adhere the masking tape to the seat to retain the determined position.

10. Keeping the seat protector taped in place, remove seat and place upside down on a smooth, clean surface.
11. Mark or otherwise indicate the location of the edges of the seat protector on the underside of the seat.
12. Remove the protector from the seat and the masking tape from the protector.

NOTE

To keep the inserted backrest from snagging the protector when the backrest is being installed, slightly roll the top-most edge of the seat protector that is nearest the pillion portion of the seat.

13. See Figure 10. Note the shape of the surface the seat protector (2) covers and gently form the protector to better fit the seat contours (1).
14. Note the location of the seat protector and clean a roughly four in square area with soapy water or alcohol.
15. Remove adhesive liner from seat protector and place the seat protector over the intended location.
16. Press from middle of seat protector outward to remove air bubbles trapped between protector and seat.
17. Allow 24 hours for adhesive to cure before getting wet or placing in extreme temperatures.

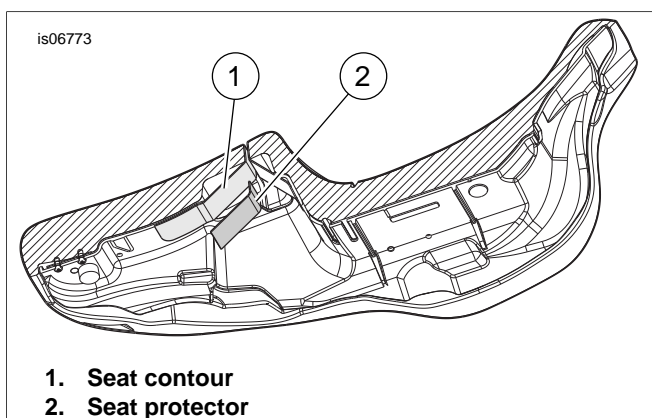


Figure 10. Underside of Seat

SEAT INSTALLATION

1. See the service manual. Install seat and grab strap (if equipped) with the previously removed hardware.
2. See the service manual. Install seat. After installing seat, pull up on the seat to verify that it is secure.

BACKREST INSTALLATION

1. See Figure 11. Press on lever on backrest bracket as shown. Insert backrest and press gently until it snaps into place.

⚠ WARNING

After installing backrest, pull upward to be sure it is locked in position. While riding, a loose backrest can shift causing loss of control, which could result in death or serious injury. (00386a)

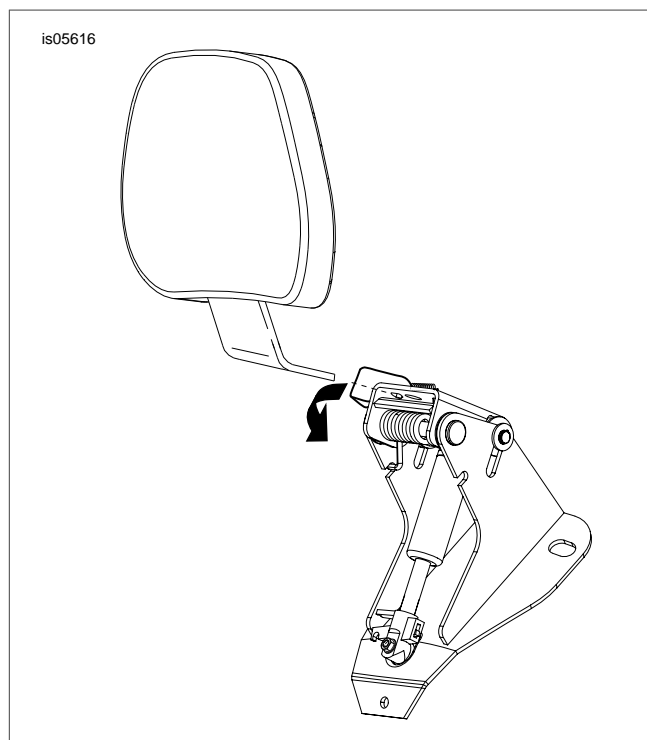


Figure 11. Installing Backrest

OPERATION

⚠ WARNING

After installing backrest, pull upward to be sure it is locked in position. While riding, a loose backrest can shift causing loss of control, which could result in death or serious injury. (00386a)

1. See Figure 12. The adjustment handle is used to move the backrest pad into the forward and rearward positions.
2. To adjust the backrest pad forward or rearward (2), push the handle. Leaning back against the backrest pad helps adjust it rearward. Keeping your weight off of the backrest pad while pushing the handle causes the backrest to come to its full forward position. Releasing the handle locks the backrest into place.
3. To adjust the backrest pad up and down (1), pull the knob on rear of pad. Move the backrest up or down into the desired position then release when the pad is in the desired position.

NOTE

Be careful when pushing the seat to the full forward mounting position (3). Pushing the seat forward too far could tear the seat material.

4. The backrest pad may be pushed forward against seat (3) as shown to ease in getting off and on the motorcycle without activating the release handle.

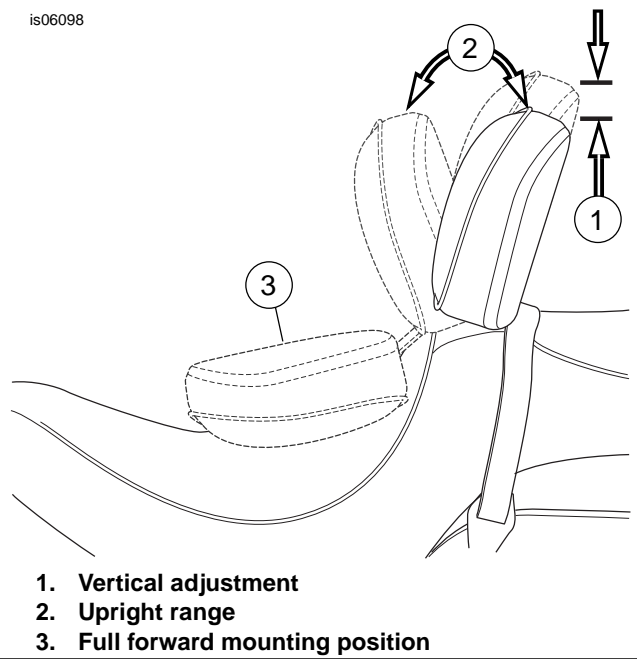


Figure 12. Backrest Postions

SERVICE PARTS

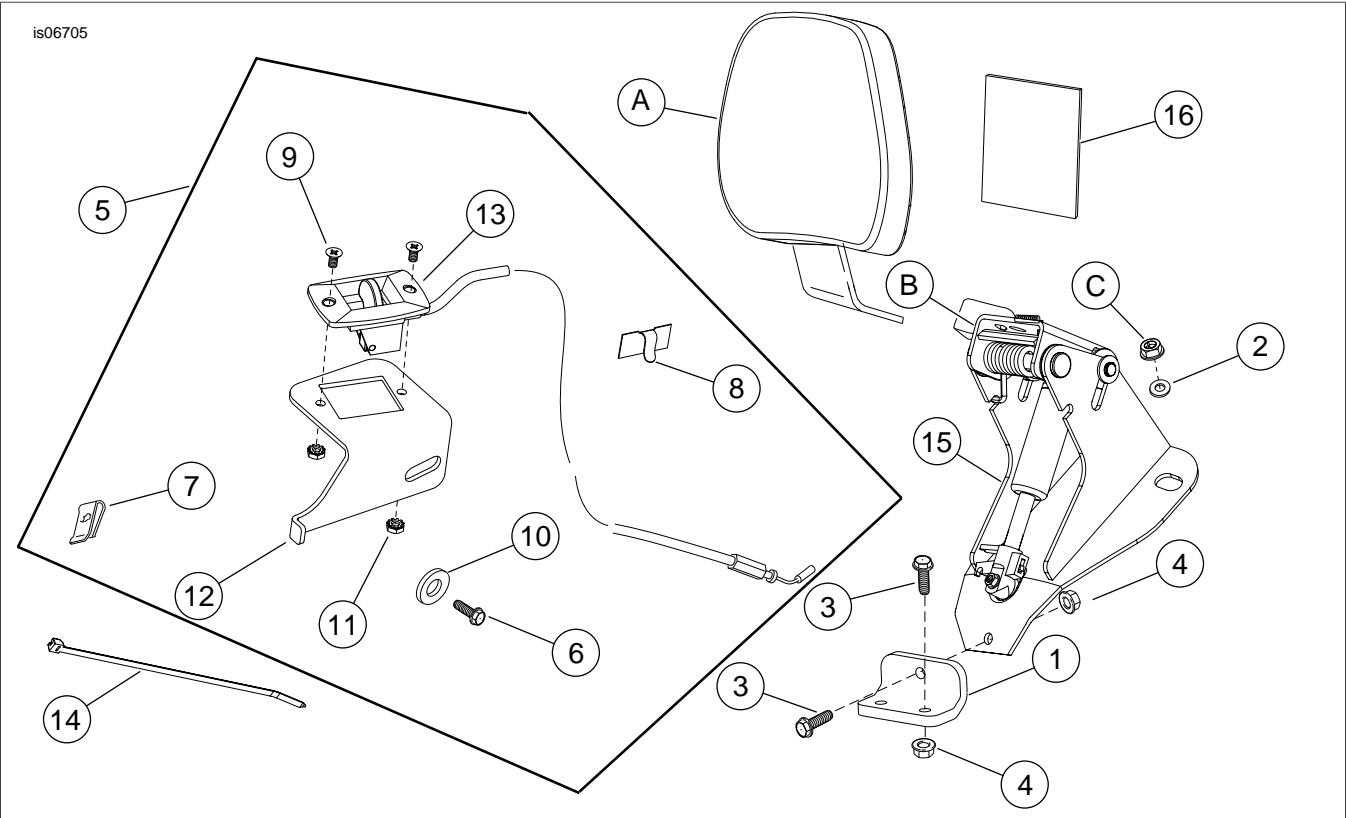


Figure 13. Service Parts: FL Adjustable Rider Backrest Mounting Hardware Kit

Table 1. Service Parts Table: Adjustable Rider Backrest

Item	Description (Quantity)	Part Number
1	Mounting bracket	52590-09
2	Washer (2)	6223
3	Screw, 1/4-20 x 3/4 inch (3)	3574
4	Nut, locking flange, 1/4-20 (3)	7716
5	Actuation handle kit (includes Items 6 through 13)	52365-09
6	• Screw, 1/4-20 x 3/4 inch	3574
7	• Clip nut	8108
8	• Wire guide	10102
9	• Screw (2)	2933
10	• Washer	6036
11	• Lock nut (2)	7838
12	• Actuator bracket handle	Not Sold Separately
13	• Actuator handle with cable	Not Sold Separately
14	• Cable strap	Not Sold Separately
15	Backrest mounting base	52482-01A
16	Seat protector, adhesive backed, 3 1/2 x 3 inch	52300017
Items referenced in text, but not included in kit:		
A	Backrest pad	Sold Separately
B	Pivot bracket repair kit (includes pivot bracket, lever, spring and hardware)	52342-09
C	Stock nut	