

MOOG

VIDEOLARM

© 2011, Moog Videolarm, Inc. All Rights Reserved



PB24M24/58

MIMO Wireless Solutions

www.videolarm.com

Installation and Operation Instructions for the following models:

- PB24M24 Rugged outdoor wireless box, with a 220/110Vac input and 24Vac output for camera, fuse protected with a wireless 2.4GHz MIMO transmitter. Directional antenna. Pole mounting clips included.
- PB24M58 Rugged outdoor wireless box, with a 220/110Vac input and 24Vac output for camera, fuse protected with a wireless 5.8GHz MIMO transmitter. Directional antenna. Pole mounting clips included.

Before attempting to connect or operate this product, please read these instructions completely.

81-IN5465
4-16-2012

IMPORTANT SAFEGUARDS

- 1 Read these instructions.
- 2 Keep these instructions.
- 3 Heed all warnings.
- 4 Follow all instructions.
- 5 Do not use this apparatus near water.
- 6 Clean only with damp cloth.
- 7 Do not block any of the ventilation openings. Install in accordance with the manufacturers instructions.
- 8 Cable Runs- All cable runs must be within permissible distance.
- 9 Mounting - This unit must be properly and securely mounted to a supporting structure capable of sustaining the weight of the unit.

Accordingly:

- a. The installation should be made by a qualified installer.
 - b. The installation should be in compliance with local codes.
 - c. Care should be exercised to select suitable hardware to install the unit, taking into account both the composition of the mounting surface and the weight of the unit.
- 10 Do not install near any heat sources such as radiators, heat registers, stoves, or other apparatus (including amplifiers) that produce heat.
 - 11 Do not defeat the safety purpose of the polarized or grounding-type plug. A polarized plug has two blades with one wider than the other. A grounding type plug has two blades and a third grounding prong. The wide blade or the third prong are provided for your safety. When the provided plug does not fit into your outlet, consult an electrician for replacement of the obsolete outlet.
 - 12 Protect the power cord from being walked on or pinched particularly at plugs, convenience receptacles, and the point where they exit from the apparatus.
 - 13 Only use attachment/ accessories specified by the manufacturer.
 - 14 Use only with a cart, stand, tripod, bracket, or table specified by the manufacturer, or sold with the apparatus. When a cart is used, use caution when moving the cart/ apparatus combination to avoid injury from tip-over.
 - 15 Unplug this apparatus during lightning storms or when unused for long periods of time.
 - 16 Refer all servicing to qualified service personnel. Servicing is required when the apparatus has been damaged in any way, such as power-supply cord or plug is damaged, liquid has been spilled or objects have fallen into the apparatus, the apparatus has been exposed to rain or moisture, does not operate normally, or has been dropped.

Be sure to periodically examine the unit and the supporting structure to make sure that the integrity of the installation is intact. Failure to comply with the foregoing could result in the unit separating from the support structure and falling, with resultant damages or injury to anyone or anything struck by the falling unit.

UNPACKING

Unpack carefully. Electronic components can be damaged if improperly handled or dropped. If an item appears to have been damaged in shipment, replace it properly in its carton and notify the shipper.

Be sure to save:

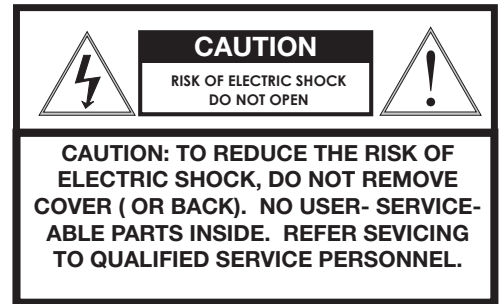
- 1 **The shipping carton and packaging material. They are the safest material in which to make future shipments of the equipment.**
- 2 **These Installation and Operating Instructions.**

SERVICE

If technical support or service is needed, contact us at the following number:

TECHNICAL SUPPORT
AVAILABLE 24 HOURS
1 - 800 - 554 -1124

SAFETY PRECAUTIONS



The lightning flash with an arrowhead symbol, within an equilateral triangle, is intended to alert the user to the presence of non-insulated "dangerous voltage" within the product's enclosure that may be of sufficient magnitude to constitute a risk to persons.

Este símbolo se piensa para alertar al usuario a la presencia del "voltaje peligroso no-aislado" dentro del recinto de los productos que puede ser un riesgo de choque eléctrico.

Ce symbole est prévu pour alerter l'utilisateur à la présence "de la tension dangereuse" non-isolée dans la clôture de produits qui peut être un risque de choc électrique.

Dieses Symbol soll den Benutzer zum Vorhandensein der nicht-Isolier "Gefährdungsspannung" innerhalb der Produkteinschließung alarmieren die eine Gefahr des elektrischen Schlages sein kann.

Este símbolo é pretendido alertar o usuário à presença "di tensão perigosa non-isolada" dentro do cerco dos produtos que pode ser um risco de choque elétrico.

Questo simbolo è inteso per avvertire l'utente alla presenza "di tensione pericolosa" non-isolata all'interno della recinzione dei prodotti che può essere un rischio di scossa elettrica.



The exclamation point within an equilateral triangle is intended to alert the user to presence of important operating and maintenance (servicing) instructions in the literature accompanying the appliance.

Este símbolo del punto del exclamation se piensa para alertar al usuario a la presencia de instrucciones importantes en la literatura que acompaña la aplicación.

Ce symbole de point d'exclamation est prévu pour alerter l'utilisateur à la présence des instructions importantes dans la littérature accompagnant l'appareil.

Dieses Ausruf Punktsymbol soll den Benutzer zum Vorhandensein de wichtigen Anweisungen in der Literatur alarmieren, die das Gerät begleitet.

Este símbolo do ponto do exclamation é pretendido alertar o usuário à presença de instruções importantes na literatura que acompanha o dispositivo.

Questo simbolo del punto del exclamation è inteso per avvertire l'utente alla presenza delle istruzioni importanti nella letteratura che accompagna l'apparecchio.



Limited Warranty for Moog Videolarm Products

Moog Videolarm warrants these products to be free from defects in material or workmanship as follows:

PRODUCT CATEGORY	PARTS \ LABOR
All Enclosures and Electronics*	Five (5) Years
Poles/PolEvators™/CamEvator	Three (3) Years
Warrior Series™/Q-View™/IR Illuminators	Five (5) Years
SView Series™	Five (5) Years **6 months if used in auto scan/tour operation
Controllers	Five (5) Years
Power Supplies	Five (5) Years
EcoKit	Three (3) Years
Accessory Brackets	Five (5) Years
Liberty Dome	Three (3) Years
*DeputyDome™, NiteTrac™, Igloo Dome, PurgeDome™	Three (3) Years **6 months if used in auto scan/tour operation

During the labor warranty period, to repair the Product, Purchaser will either return the defective product, freight prepaid, or deliver it to Moog Videolarm Inc. Decatur GA. The Product to be repaired is to be returned in either its original carton or a similar package affording an equal degree of protection with a RMA # (Return Materials Authorization number) displayed on the outer box or packing slip. To obtain a RMA# you must contact our Technical Support Team at 800.554.1124, extension 101. Moog Videolarm will return the repaired Product freight prepaid to Purchaser. Moog Videolarm is not obligated to provide Purchaser with a substitute unit during the warranty period or at any time. After the applicable warranty period, Purchaser must pay all labor and/or parts charges.

The limited warranty stated in these product instructions is subject to all of the following terms and conditions.

TERMS AND CONDITIONS

1. NOTIFICATION OF CLAIMS: WARRANTY SERVICE: If Purchaser believes that the Product is defective in material or workmanship, then written notice with an explanation of the claim shall be given promptly by Purchaser to Moog Videolarm. All claims for warranty service must be made within the warranty period. If after investigation Moog Videolarm determines the reported problem was not covered by the warranty, Purchaser shall pay Moog Videolarm for the cost of investigating the problem at its then prevailing per incident billable rate. No repair or replacement of any Product or part thereof shall extend the warranty period of the entire Product. The specific warranty on the repaired part only shall be in effect for a period of ninety (90) days following the repair or replacement of that part or the remaining period of the Product parts warranty, whichever is greater.

2. EXCLUSIVE REMEDY: ACCEPTANCE: Purchaser's exclusive remedy and Moog Videolarm's sole obligation is to supply (or pay for) all labor necessary to repair any Product found to be defective within the warranty period and to supply, at no extra charge, new or rebuilt replacements for defective parts.

3. EXCEPTIONS TO LIMITED WARRANTY: Moog Videolarm shall have no liability or obligation to Purchaser with respect to any Product requiring service during the warranty period which is subjected to any of the following: abuse, improper use, negligence, accident, lightning damage or other acts of God (i.e., hurricanes, earthquakes), modification, failure of the end-user to follow the directions outlined in the product instructions, failure of the end-user to follow the maintenance procedures recommended by the International Security Industry Organization, written in product instructions, or recommended in the service manual for the Product. Furthermore, Moog Videolarm shall have no liability where a schedule is specified for regular replacement or maintenance or cleaning of certain parts (based on usage) and the end-user has failed to follow such schedule; attempted repair by non-qualified personnel; operation of the Product outside of the published environmental and electrical parameters, or if such Product's original identification (trademark, serial number) markings have been defaced, altered, or removed. Moog Videolarm excludes from warranty coverage Products sold AS IS and/or WITH ALL FAULTS and excludes used Products which have not been sold by Moog Videolarm to the Purchaser. All software and accompanying documentation furnished with, or as part of the Product is furnished "AS IS" (i.e., without any warranty of any kind), except where expressly provided otherwise in any documentation or license agreement furnished with the Product. Any cost associated with removal of defective product and installation of replacement product is not included in this warranty.

4. PROOF OF PURCHASE: The Purchaser's dated bill of sale must be retained as evidence of the date of purchase and to establish warranty eligibility.

DISCLAIMER OF WARRANTY

EXCEPT FOR THE FOREGOING WARRANTIES, Moog Videolarm HEREBY DISCLAIMS AND EXCLUDES ALL OTHER WARRANTIES, EXPRESS OR IMPLIED, INCLUDING, BUT NOT LIMITED TO ANY AND/OR ALL IMPLIED WARRANTIES OF MERCHANTABILITY, FITNESS FOR A PARTICULAR PURPOSE AND/OR ANY WARRANTY WITH REGARD TO ANY CLAIM OF INFRINGEMENT THAT MAY BE PROVIDED IN SECTION 2-312(3) OF THE UNIFORM COMMERCIAL CODE AND/OR IN ANY OTHER COMPARABLE STATE STATUTE. Moog Videolarm HEREBY DISCLAIMS ANY REPRESENTATIONS OR WARRANTY THAT THE PRODUCT IS COMPATIBLE WITH ANY COMBINATION OF NON-Moog Videolarm PRODUCTS OR NON-Moog Videolarm RECOMMENDED PRODUCTS PURCHASER MAY CHOOSE TO CONNECT TO THE PRODUCT.

LIMITATION OF LIABILITY

THE LIABILITY OF Moog Videolarm, IF ANY, AND PURCHASER'S SOLE AND EXCLUSIVE REMEDY FOR DAMAGES FOR ANY CLAIM OF ANY KIND WHATSOEVER, REGARDLESS OF THE LEGAL THEORY AND WHETHER ARISING IN TORT OR CONTRACT, SHALL NOT BE GREATER THAN THE ACTUAL PURCHASE PRICE OF THE PRODUCT WITH RESPECT TO WHICH SUCH CLAIM IS MADE. IN NO EVENT SHALL Moog Videolarm BE LIABLE TO PURCHASER FOR ANY SPECIAL, INDIRECT, INCIDENTAL, OR CONSEQUENTIAL DAMAGES OF ANY KIND INCLUDING, BUT NOT LIMITED TO, COMPENSATION, REIMBURSEMENT OR DAMAGES ON ACCOUNT OF THE LOSS OF PRESENT OR PROSPECTIVE PROFITS OR FOR ANY OTHER REASON WHATSOEVER.



Electrical Specifications



English

Input Power: 120VAC/240VAC 1A/.5A Power Consumption: 1Amp (120Watts) at 120VAC Power Output: 96VA at 24VAC 52Watts Heater/Blower 32Watts Camera Power

An all pole main switch with a contact of at least 3mm in each pole shall be incorporated in the electrical installation of the building.

Tools Required: .150" Flathead Screwdriver 7/16 Wrench or Socket 9/16 Wrench or Socket



Español

Energía De Entrada: 120 Consumo De Energía de VAC/240VAC 1A/.5A: 1Amp (120 vatios) en 120 VAC de salida de energía: VA 96 en 24 VAC 52 vatios de Heater/Blower 32 vatios de energía de la cámara fotográfica

Todo el interruptor principal del poste con un contacto de por lo menos 3m m en cada poste será incorporado en la instalación eléctrica del edificio.

Herramientas Requeridas: destornillador de cabeza llana del 150"7/16 llave de la llave o del zócalo 9/16 o zócalo



Français

Puissance D'entrée : 120 Puissance D'Énergie de VAC/240VAC 1A/.5A : 1Amp (120 watts) à 120 VCA de rendement de puissance : VA 96 à 24 VCA 52 watts de Heater/Blower 32 watts de puissance d'appareil-photo

Un tout le commutateur principal de poteau avec un contact au moins de 3mm dans chaque poteau sera incorporé dans l'installation électrique du bâtiment.

Outils Requis : tournevis à tête plate de 150"7/16 clé de clé ou de douille 9/16 ou douille



Deutsch

Zugeführte Energie: 120 VAC/240VAC 1A/.5A Leistungsaufnahme: 1Amp (120 Watt) bei 120 VAC Abgabeleistung: VA 96 bei 24 VAC 52 Watt Heater/Blower 32 Watt Kamera-Energie

Ein aller Pfostenhauptschalter mit einem Kontakt von 3mm mindestens in jedem Pfosten wird in der elektrischen Installation des Gebäudes enthalten.

Werkzeuge Erforderten: 150"Flachkopfschraubenzieher 7/16 Schlüssel-oder Einaßung 9/16 Schlüssel oder Einaßung



Portuguese

Poder De Entrada: 120 Consumo De Potência de VAC/240VAC 1A/.5A: 1Amp (120 watts) em 120 VAC de saída de poder: VA 96 em 24 VAC 52 watts de Heater/Blower 32 watts de poder da câmera

Todo o interruptor principal do pólo com um contato ao menos de 3mm em cada pólo será incorporado na instalação elétrica do edifício.

As Ferramentas Requereram: chave de fenda flathead do 150"7/16 de chave da chave ou do soquete 9/16 ou soquete



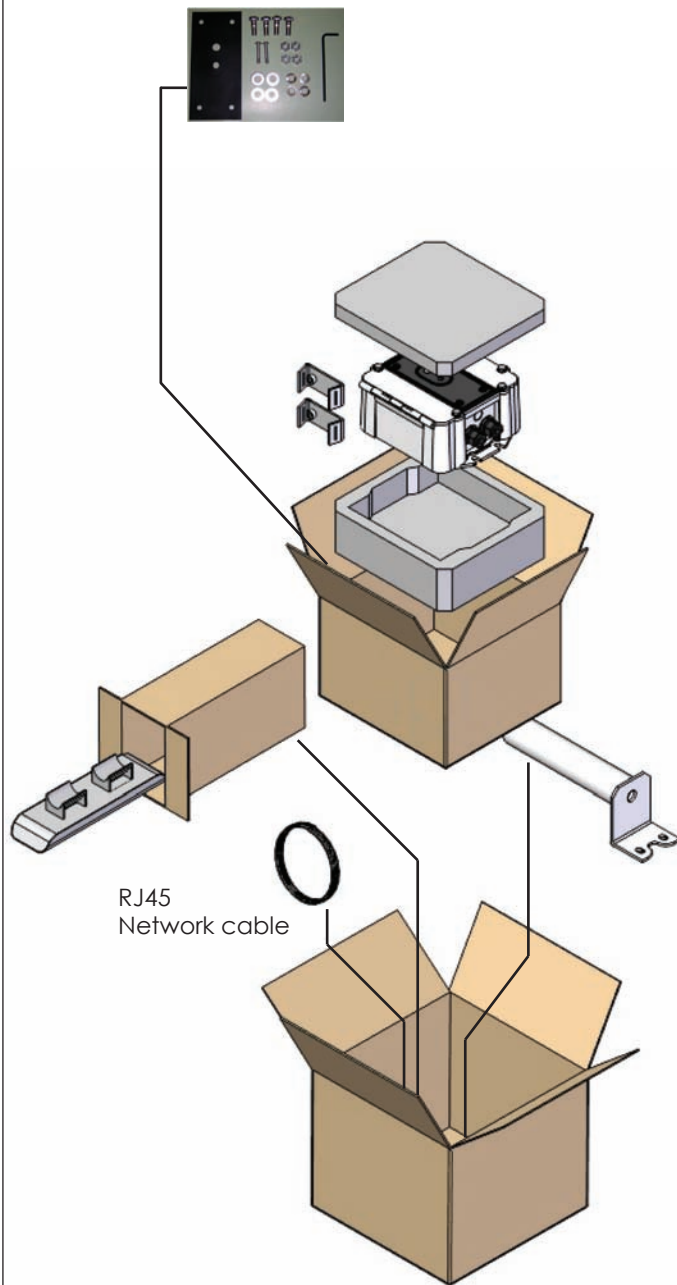
Italiano

Alimentazione in ingresso Di Entrada: 120 Assorbimento di corrente Di energia di VAC/240VAC 1A/.5A: 1Amp (120 watt) a 120 VCA di uscita di alimentazione: VA 96 a 24 VCA 52 watt di Heater/Blower 32 watt di alimentazione della macchina fotografica

Tutto l'interruttore principale del palo con un contatto almeno di 3mm in ogni palo sarà compreso nell'installazione elettrica della costruzione.

Attrezzi Richiesti: cacciavite a testa piatta del 150"7/16 di chiave dallo zoccolo o dalla chiave 9/16 o zoccolo

Contents of Box



RJ45 Network cable

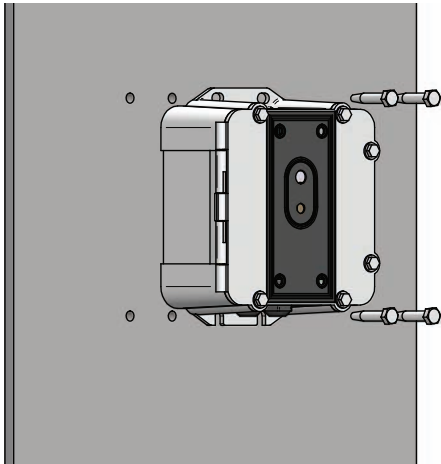
GENERAL INSTRUCTIONS (Mechanical):

Tools Required (minimum)

.150" Flat head Screwdriver
7/16" Wrench or Socket
9/16" Wrench or Socket

Installing the Power Box

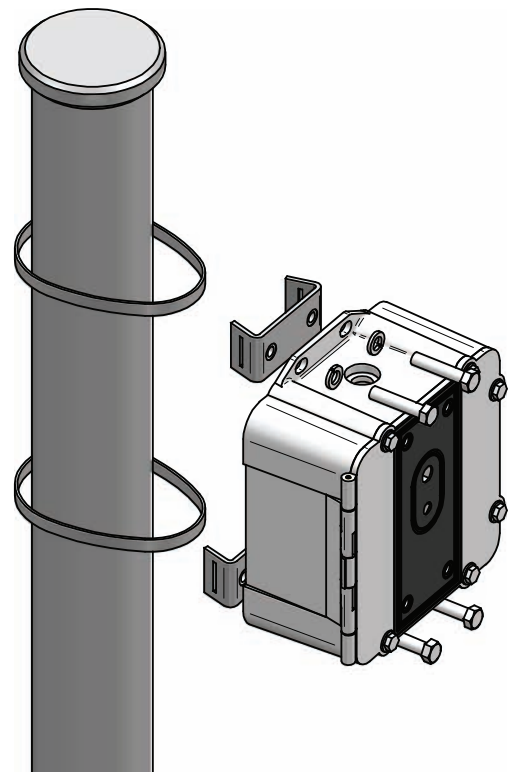
1



Wall Mounting: Attach unit securely with (4) 5/16" - 3/8" or 8mm hardware (not supplied).

- A template is provided in the instructions with the 2 x 8 bolt pattern required for the mounting of this product.
- Each fastener should be able to withstand a minimum pull out force of 600 lbs. (272kg)

2



The power box may be pole mounted with the pole support clips.

3 Connecting Housing to the Power Box

- Open packet assembly.
- Special 3/8" bolts are provided and designed to mount either the WM20G or the WM10 (Standard Fusion Dome and Rugged Housing wall mount bracket) to the Power box.
- Assemble wall mount bracket and housing as shown in the next block.
- Push the cable assembly connectors through either of the (2) holes provided.

Cubierta de conexión a la caja de la energía

- Abra el montaje de paquete.
- Pernos del Special 3/8 rugoso estándar se proporcionan y se diseñan los" para montar el WM20G o el WM10 (la bóveda de la fusión y pared de la cubierta monta el soporte) a la caja de la energía.
- Monte el soporte y la cubierta del montaje de la pared según las indicaciones del bloque siguiente.
- Empuje los conectores del montaje de cable con cualquiera (2) de los agujeros proporcionados.

Logement se reliant dans la boîte de puissance

- Ouvrez le paquet.
- Boulons du Special 3/8 raboteux standard des » sont fournis et conçu pour monter le WM20G ou le WM10 (le dôme de fusion et mur de logement montent la parenthèse) dans la boîte de puissance.
- Assemblez la parenthèse et le logement de bâti de mur suivant les indications du prochain bloc.
- Poussez les connecteurs de câble équipé par l'un ou l'autre (2) des trous fournis.

AnschlieBengehäuse zum Energien-Kasten

- Öffnen Sie Paketierung.
- Schraubbolzen des Special 3/8" sind, um entweder das WM20G oder das WM10 (Standardbringen schmelzverfahrens-Haube und schroffes Gehäusewand Haltewinkel), an zum Energienkasten anzubringen zur Verfügung gestellt und entworfen.
- Bauen Sie Wandeinfassungshaltewinkel und-gehäuse wie in dem folgenden Block gezeigt zusammen.
- Drücken Sie die Kabelverbindungsstücke durch irgendeiner der (2) bereitgestellte Löcher.

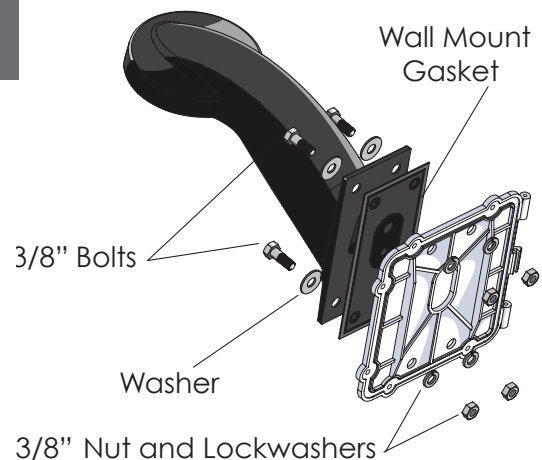
Carcaça de conexão à caixa do poder

- Abra o conjunto de pacote.
- Parafusos do Special 3/8 áspero padrão os" são fornecidos e projetados montar o WM20G ou o WM10 (a abóbada da fusão e parede da carcaça monta o suporte) à caixa do poder.
- Monte o suporte e a carcaça da montagem da parede segundo as indicações do bloco seguinte.
- Empurre os conectores do conjunto de cabo com qualquer um (2) dos furos fornecidos.

Alloggiamento di collegamento alla scatola di potere

- Apra l'assemblea di pacchetto.
- I bulloni dello Special 3/8 robusto standard., sono forniti e destinati per montare il WM20G o il WM10 (la cupola di fusione e parete dell'alloggiamento monta la staffa) alla scatola di potere.
- Montati la staffa e l'alloggiamento del supporto della parete secondo le indicazioni del blocco seguente.
- Spinga i connettori dell'assemblea di cavo attraverso o del (2) fori forniti.

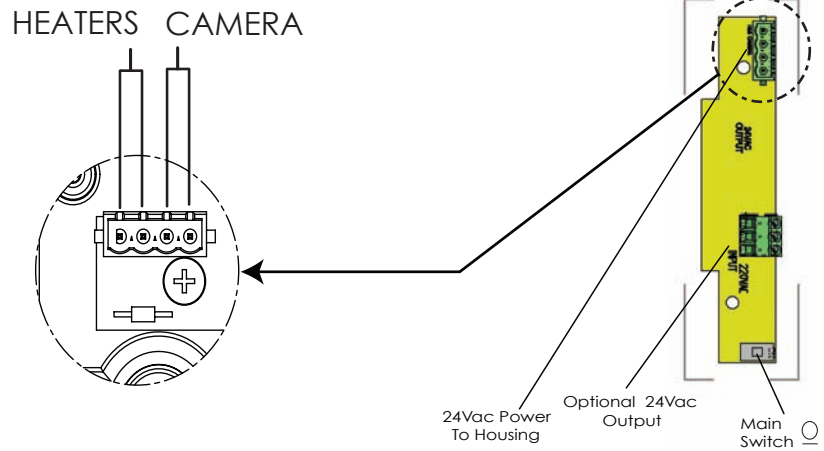
4



The wall mount bracket must be attached using the gasket as shown.

- **IMPOTANT!** Unit will not seal properly unless installed as shown above. Do not attempt to use power box without installing wall mount gasket.
- **NOTE:** Housing and complete Power Box are not shown in illustration for clarity only.

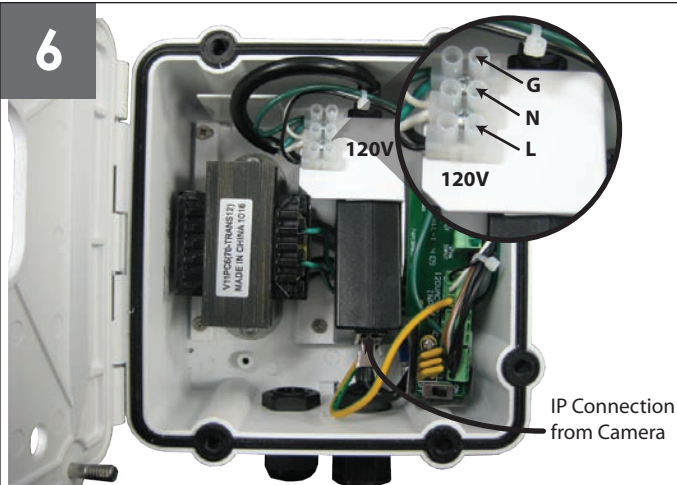
5 OUTPUT: (24VAC)



Internal resettable fuses are supplied for the main 24VAC output lines. Do not connect heaters to camera output. The PB24 is not designed for 3 phase or 208V systems.

- Los fusibles restaurables internos se proveen para las líneas de salida principales 24VAC. No conecte los calentadores con la salida de la cámara fotográfica. El PB24 no se diseña para 3 fases o sistemas 208V.
- Des fusibles réglables internes sont fournis pour les lignes de la sortie 24VAC principales. Ne reliez pas les réchauffeurs au rendement d'appareil-photo. Le PB24 n'est pas conçu pour 3 phases ou systèmes 208V.
- Interne rückstellbare Sicherungen werden für die Haupt-24VAC Ertragskurven geliefert. Schließen Sie Heizungen nicht an Kameraausgang an. Das PB24 ist nicht für 3 Phase oder Systeme 208V bestimmt.
- Os fusíveis resettable internos são fornecidos para as linhas de saída 24VAC principais. Não conecte calefatores à saída da câmera. O PB24 não é projetado para 3 fases ou sistemas 208V.
- I fusibili resettable interni sono forniti per le linee di uscita principali 24VAC. Non colleghi i riscaldatori all'uscita della macchina fotografica. Il PB24 non è progettato per 3 fase o sistemi 208V.

6



Connect IP cable from camera.

- Conecte el cable del IP de la cámara.
- Reliez le câble d'IP de l'appareil-photo.
- Schließen Sie IP-Kabel von der Kamera an.
- Conecte o cabo do IP da câmera.
- Collegli il cavo del IP dalla macchina fotografica.

7



Attach the client (transmitter) on wall or pole with the adapter supplied.

- Ate el cliente (transmisor) en la pared o el poste con el adaptador suministrado.
- Attachez le client (émetteur) sur le mur ou le poteau avec l'adaptateur fourni.
- Bringen Sie den Klienten (Übermittler) auf Wand oder Pfosten mit dem gelieferten Adapter an.
- Una o cliente (transmissor) na parede ou o pólo com o adaptador fornecido.
- Attacchi il cliente (trasmettitore) sulla parete o il palo con l'adattatore fornito.

8



Connect IP cable between power.

- Conecte el cable del IP entre la energía.
- Reliez le câble d'IP entre la puissance.
- Schließen Sie IP-Kabel zwischen Energie an.
- Conecte o cabo do IP entre o poder.
- Collegli il cavo del IP fra potere.

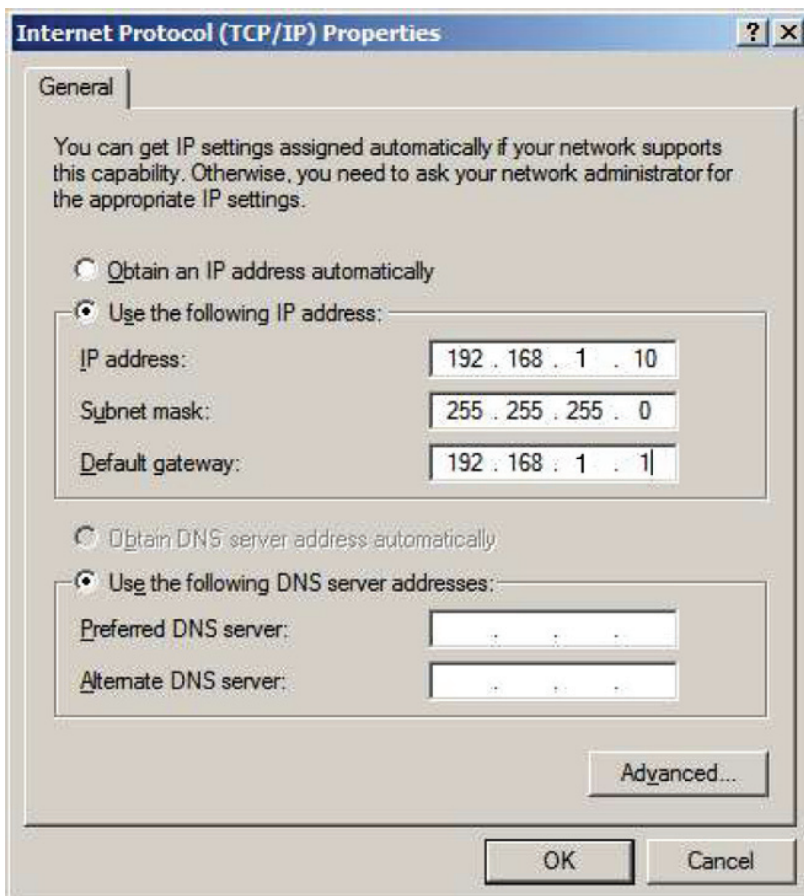
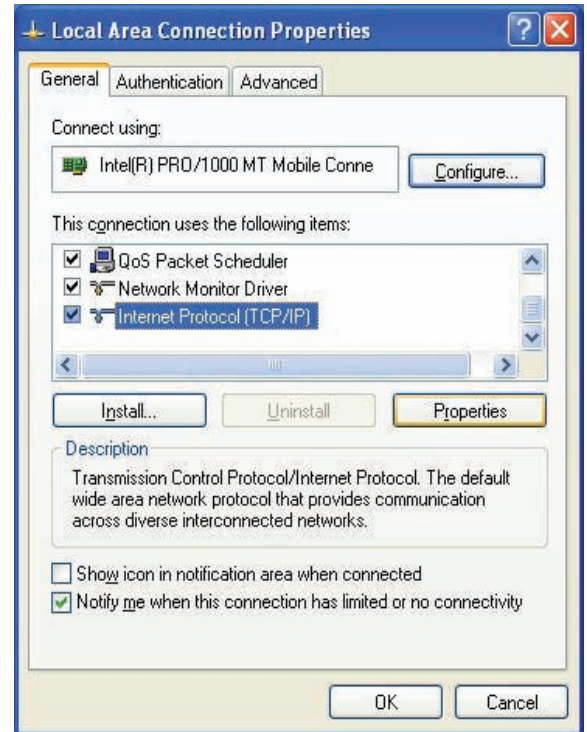
Configure the Wireless

1

Pre-configuring PC Setup

Prior to the PB24M Series configuration, a computer with its Local Area Connection set to a static IP address is required to pre-configure the device (i.e. 192.168.1.XX).

In order to do so, select the “Start” menu, “Control Panel” and then “Network Connections”. Right click on the “Local Area Connection” icon, choose “Properties”, and double click on the item “Internet Protocol (TCP/IP)” from the list as shown in the diagram on the right.



An ‘Internet Protocol (TCP/IP) Properties’ screen will pop up. Set it as shown on the left.

Click the “OK” button to confirm the change. Now you are ready to start the first time configuration of the PB24M Series.

2

- Connect to the PB24M24/58 by opening a web browser and connecting to <http://192.168.1.100>.

Login to the device using **videolarm** for the username and **camera** for the password.

Click on the **Network** tab on the configuration page.

Note that a static IP address of **192.168.1.100** has been assigned to the unit as default.

The default IP address, subnet mask, and gateway can all be changed from this screen if needed.

Click in the corresponding box and enter in the required IP setting, then click the **Change** button in the bottom right hand corner of the window.

The screenshot shows the 'Network Settings' page in a web browser. The 'Network Role' section has 'Network Mode' set to 'Bridge' and 'Disable Network' set to 'None'. Under 'Network Settings', 'Bridge IP Address' is set to 'Static' with an IP of '192.168.2.1', a netmask of '255.255.255.0', and a gateway of '0.0.0.0'. Other fields for DNS and protocols are also visible. At the bottom right, there is a 'Change' button.

NOTE - Connection to the PB24M24/58 **will be lost** if the IP address is changed at this time. A connection will need to be made to the new IP address that has just been assigned in order to view the configuration page again.

2.1 Wireless Configuration

Click on the Wireless tab on the configuration page.

Note that the Wireless mode for this unit is set to **Station** and the default SSID for the wireless network is set to **videolarm**.

The default SSID can be changed by clicking on the Select button next to the SSID box.

A **new** window will appear that will show **all** of the wireless networks within range of the device.

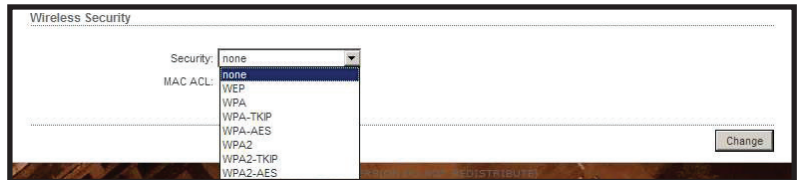
Select the required SSID (if it was changed in the previous steps), and click on the **Select** button at the bottom right hand corner of the window.

The screenshot shows the 'Basic Wireless Settings' page. 'Wireless Mode' is set to 'Station' and the SSID is 'videolarm'. Other settings include 'Country Code' as 'United States', 'IEEE 802.11 Mode' as 'B/G/N mixed', and 'Channel Width' as 'Auto 20/40 MHz'. There is a 'Select...' button next to the SSID field. At the bottom right, there is a 'Change' button.

2.2 Wireless Security Options

Encryption for the wireless link is **also** set from the **main** Wireless configuration page.

Select the Encryption method that is desired and enter the appropriate encryption key. Note that this same key will need to be entered in **all** devices connecting to the wireless network.



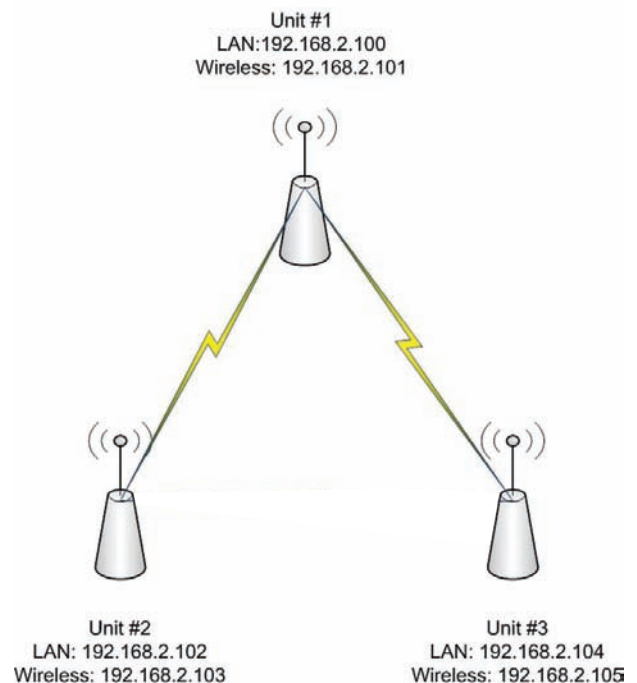
Click the **Change** button in the bottom right hand corner to apply the security settings.

3 Adding Multiple PB24M Series Devices to a Wireless Network

By default each PB24M Series is configured with the IP address of 192.168.1.100. If there is more than one PB24M Series on the wireless network, then you will need to change the default IP addresses on each additional device. For example Unit 1 could retain the default IP address of 192.168.1.100. Unit 2 would need to have its address changed, so it could have 192.168.1.101 assigned to the Network Configuration. Unit 3 could have addresses of 192.168.1.102, and so on for each additional device.

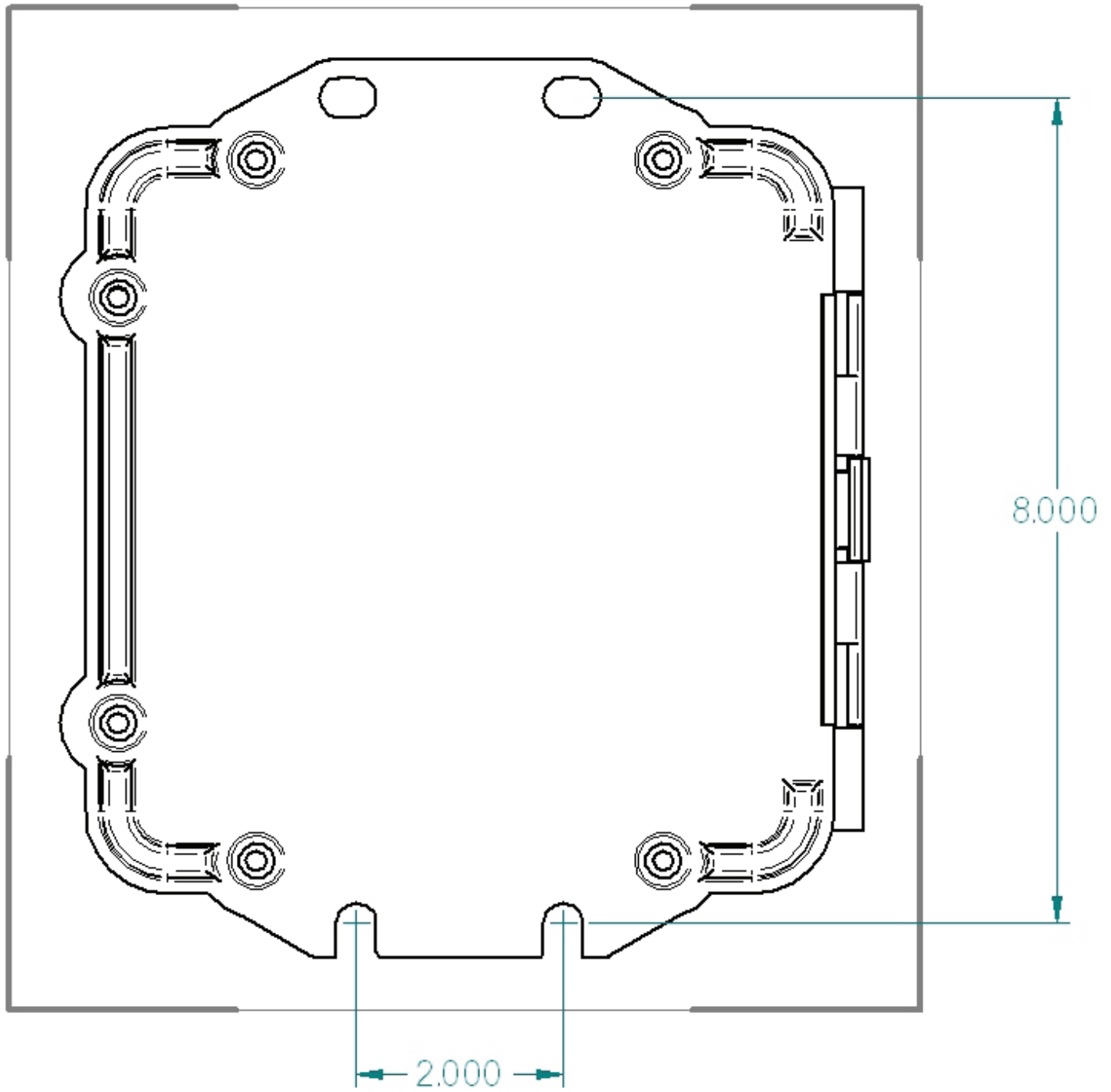
NOTE – When configuring multiple PB24M Series devices for the first time, make sure that only one device is powered on at a time. Powering on two devices with a default configuration will cause IP address conflicts on a network since each of the devices will have the same addresses assigned to their interfaces.

PB24M58 IP CONFIGURATION



3.1 Changing the Default SSID

The default SSID for the PB24M Series is Videolarm. If the SSID needs to be changed from the default, then the SSID must be changed on **ALL** wireless devices in the network on all PB24M Series devices.



Wireless IP & Mac Address Form

For your convenience and future reference, the following form has been included to record your wireless surveillance systems IP and Mac addresses. Once completed, remove the form from instruction packet and place in a secure place or inside the Moog Videolarm wireless product. The information recorded will prove beneficial when servicing or expanding your wireless system.

Camera #	IP Address	Mac Address	Location	Password	Notes
1	192.168.1.101	00-65-29-12-12	Parking1	Root	Megapixl Cam
1					
2					
3					
4					
5					
6					
7					
8					
9					
10					
11					
12					

Wireless #	IP Address	Mac Address	Location	BSSID	Mode
1	192.168.1.1	00-08-d3-12-d2	Parking1	Videolarm	Client ch 11
1					
2					
3					
4					
5					
6					
7					
8					
9					
10					
11					
12					

Product Registration/Warranty

Thank you for choosing Moog Videolarm. We value your patronage and are solely committed to providing you with the highest quality products available and superior customer service.

Should a problem arise, rest assure that Moog Videolarm stands behind its products by offering impressive warranty plans: 3 Years on all Housings, Poles, Power Supplies, and Accessories and 5 Years on camera systems (SView, QView, Warriors), and InfraRed Illuminators.



Register Your Products Online

Take a few moments and validate your purchase via the Online Product Registration Form at
www.videolarm.com/productregistration.jsp

Register your recent Moog Videolarm purchases and benefit from the following:

- Simple and Trouble-Free RMA process
- Added into customer database to receive product updates / news
- Eliminate the need to archive original purchase documents:
Receipts, Purchase Orders, etc...