

3-8-3 System Setup

Modifications of system parameters are supported by diverse dialog pages and windows on the system setup desktop:

- **General** - Date, Time, Clinic Name, Language, Screen saver, etc.
- **User Settings** - to save User programs, 3D/4D programs, Auto Text, Doppler 2D Refresh, etc.
- **Peripherals** - to adjust assignment of **PRINT** keys, Foot Switch, selection of Save Destination, etc.
- **Option** - shows which options are installed in the system
- **Service** - enter the password to get access to the Service Tools functions
- **Backup** - Save/Load User Settings Only, Save/Load/Delete Full Backup
- **Network** - to set up all DICOM, Sonoview and Network configuration nodes
- **System Info** - shows which Software/Hardware version is installed in the system

To invoke the Setup procedure:

- 1.) Touch the **UTILITIES** key on the Touch Panel.
- 2.) Touch the **SYSTEM SETUP** key in the "Utilities" menu to activate the setup desktop screen.

In general operations are done with the trackball and the trackball keys (mouse emulation).



Trackball (mouse position):
positions the pointing device (arrow) on the desktop



left trackball key (left mouse button):
sets, fixates markers and activates pages/buttons etc. marked by the pointing device



upper trackball key (right mouse button):
no function in system desktop



right trackball key (left mouse button):
sets, fixates markers and activates pages/buttons etc. marked by the pointing device

3-8-3-1 How to enter Date and Time

Select the GENERAL page in the System Setup see: [Figure 3-50](#).

- 1.) Select the "Date Format" (only one can be active).
- 2.) Click the DATE/TIME button to activate a sub dialog window to enter date, time and time zone.
- 3.) Click the TIME FORMAT button to activate a sub dialog window to choose the preferred time format.
- 4.) Click SAVE&EXIT to save Settings and exit System Setup.

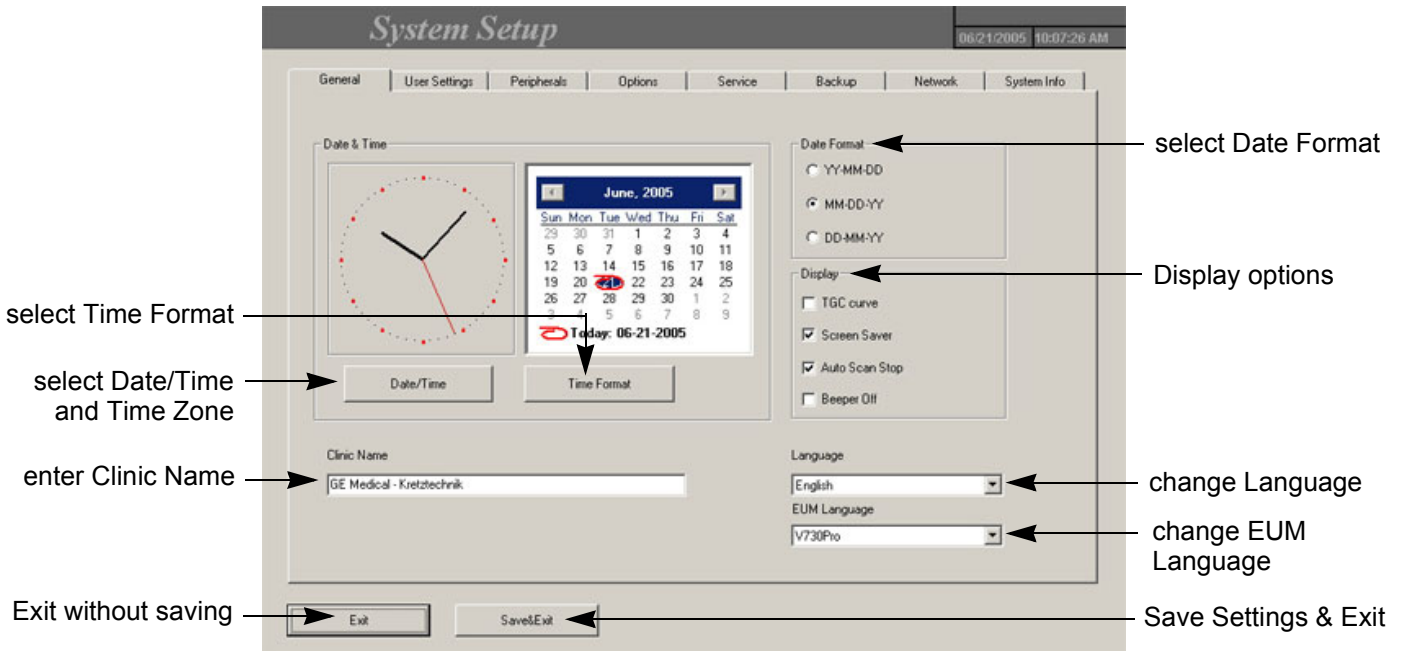


Figure 3-50 System Setup - General page

3-8-3-2 How to enter Hospital Name

Select the GENERAL page in the System Setup see: [Figure 3-50](#).

- 1.) Select the text box to enter a new "Clinic Name" with the keyboard.
 - 2.) Click SAVE&EXIT to save Settings and exit System Setup.
- The clinic name will be copied into the Hospital ID in the information header.

3-8-3-3 How to change Language and the EUM Language

Select the GENERAL page in the System Setup see: [Figure 3-50](#).

- 1.) Select the desired language from the pop-up menu.
- 2.) Click SAVE&EXIT to save Settings and exit System Setup.

NOTE: After changing the language the system has to reboot.

3-8-3-4 How to change Touch Panel Scheme

Select the USER SETTING page in the System Setup.

- 1.) Select the desired color scheme display of the Touch Panel from the pop-up menu.
- 2.) Click SAVE&EXIT to save Settings and exit System Setup.