

Service  
Service  
**Service**



# Service Manual

**TABLE OF CONTENTS**

	Chapter
Technical Specification.....	1
Safety Instructions.....	2
Instruction for Use.....	3
Mechanical Instructions.....	4
Troubleshooting & Service tips.....	5
Overall block diagram.....	6
Overall wiring diagram.....	7
Electrical diagram.....	8
Component layout.....	9
Service part list.....	10
Revision list.....	11

©Copyright 2005 Philips Consumer Electronics B.V. Eindhoven, The Netherlands  
All rights reserved. No part of this publication may be reproduced, stored in a  
retrieval system or transmitted, in any form or by any means, electronics,  
mechanical, photocopying, or otherwise without the prior permission of Philips

3141 785 30561

# 1.0 TECHNICAL SPECIFICATION and SERVICE HINT

## General

Dimensions (WxLxH):	19 x 14.6 x 2.9 cm 7.48 x 5.75 x 1.14 inches
Weight:	1kg / 2.2 lb
Power supply:	DC 9V 2.2A
Power consumption:	≤20W
Operating temp. range:	0 - 50°C (32 ~ 122°F)
Laser wavelength:	650nm
Video system:	NTSC / PAL / AUTO
Frequency response:	20Hz ~ 20KHz ± 1dB
Signal/noise ratio:	≥85dB
Audio distortion + noise:	≤80(1KHz)
Channel separation:	≥85dB
Dynamic range:	≥80dB
Output	
Audio out (analog audio):	Output level: 2V ± 10%
Load impedance:	10KΩ
Video out Output level:	1Vp - p ± 20%
Load impedance:	75Ω
Current consumption	

DC-IN SUPPLY (9.0V)	
Battery Charging Current	1.2A typ.
BATT. SUPPLY (7.2V)	
Power Off	0A
Playback with TFT on	<1.2A typ.
Playback without TFT on	<600mA
Battery playtime	>2.5hrs

Headphone out (headphone output load 2x16ohm)

Maximum output power:	>10mW
Frequency response:	20Hz - 20kHz
SNR (A-wght):	80dB typ.
THD (1kHz):	<1%
Left-Right Channel Separation:	32dB typ.
Left-Right Channel Balance:	1dB

Supported disc type

DVD video discs:



Video CD:



Audio CD:



In addition, this unit can play DVD+R & DVD+RW and CD-R & CD-RW that contains audio titles or MP3 or JPEG files.

You cannot play disc other than the above listed. (CVD, CD-ROM, CD-Extra, CD-G and CD-I discs cannot be played on this DVD player)

Software upgrades

For the best performance of your DVD Portable. Check [www.philips.com/support](http://www.philips.com/support) for latest software upgrades available.

To check the software version of your DVD Portable.

1. Press the SETUP key to enter the setup menu.
2. Press RETURN and then press 1, 2 and 3 on the remote control.
3. The display will show the software version as the date of which the software was built on the bottom of the screen. E.g. 050303

Procedure on how to upgrade the software of the DVD Portable

1. Download the latest software from the Philips support site.
2. Unzipped the files and then burn it onto a CD ROM then playback the CD ROM on the DVD Portable.

Pixel specification

≤ 4 (max. 0 bright dots and 3 dark dots)

## 2.0 SAFETY INSTRUCTIONS

### **(GB)** WARNING

All ICs and many other semi-conductors are susceptible to electrostatic discharges (ESD). Careless handling during repair can reduce life drastically. When repairing, make sure that you are connected with the same potential as the mass of the set via a wrist wrap with resistance. Keep components and tools also at this potential.

### **ESD**



### **(NL)** WAARSCHUWING

Alle IC's en vele andere halfgeleiders zijn gevoelig voor electrostatische ontladingen (ESD). Onzorgvuldig behandelen tijdens reparatie kan de levensduur drastisch doen verminderen. Zorg ervoor dat u tijdens reparatie via een polsband met weerstand verbonden bent met hetzelfde potentiaal als de massa van het apparaat. Houd componenten en hulpmiddelen ook op ditzelfde potentiaal.

### **(F)** ATTENTION

Tous les IC et beaucoup d'autres semi-conducteurs sont sensibles aux décharges statiques (ESD). Leur longévité pourrait être considérablement écourtée par le fait qu'aucune précaution n'est prise à leur manipulation. Lors de réparations, s'assurer de bien être relié au même potentiel que la masse de l'appareil et enfiler le bracelet serti d'une résistance de sécurité. Veiller à ce que les composants ainsi que les outils que l'on utilise soient également à ce potentiel.

### **(D)** WARNUNG

Alle ICs und viele andere Halbleiter sind empfindlich gegenüber elektrostatischen Entladungen (ESD). Unsorgfältige Behandlung im Reparaturfall kann die Lebensdauer drastisch reduzieren. Veranlassen Sie, dass Sie im Reparaturfall über ein Pulsarmband mit Widerstand verbunden sind mit dem gleichen Potential wie die Masse des Gerätes. Bauteile und Hilfsmittel auch auf dieses gleiche Potential halten.

### **(I)** AVVERTIMENTO

Tutti IC e parecchi semi-conduttori sono sensibili alle scariche statiche (ESD). La loro longevità potrebbe essere fortemente ridotta in caso di non osservazione della più grande cauzione alla loro manipolazione. Durante le riparazioni occorre quindi essere collegato allo stesso potenziale che quello della massa dell'apparecchio tramite un braccialetto a resistenza. Assicurarsi che i componenti e anche gli utensili con quali si lavora siano anche a questo potenziale.

### **(GB)**

Safety regulations require that the set be restored to its original condition and that parts which are identical with those specified, be used.

"Pour votre sécurité, ces documents doivent être utilisés par des spécialistes agréés, seuls habilités à réparer votre appareil en panne".

### **(NL)**

Veiligheidsbepalingen vereisen, dat het apparaat bij reparatie in zijn oorspronkelijke toestand wordt teruggebracht en dat onderdelen, identiek aan de gespecificeerde, worden toegepast.



### **(F)**

Les normes de sécurité exigent que l'appareil soit remis à l'état d'origine et que soient utilisés les pièces de rechange identiques à celles spécifiées.

### **(GB)** Warning !

Invisible laser radiation when open. Avoid direct exposure to beam.

### **(D)**

Bei jeder Reparatur sind die geltenden Sicherheitsvorschriften zu beachten. Der Originalzustand des Geräts darf nicht verändert werden; für Reparaturen sind Original-Ersatzteile zu verwenden.

### **(S)** Varning !

Osynlig laserstrålning när apparaten är öppnad och spärrar är urkopplad. Beträkta ej strålen.

### **(I)**

Le norme di sicurezza esigono che l'apparecchio venga rimesso nelle condizioni originali e che siano utilizzati i pezzi di ricambio identici a quelli specificati.

### **(SF)** Varoitus !

Avatussa laitteessa ja suojalukituksen ohitettaessa olet alltiina näkymättömälle laserisäteilylle. Älä katso säteeseen!

"After servicing and before returning set to customer perform a leakage current measurement test from all exposed metal parts to earth ground to assure no shock hazard exist. The leakage current must not exceed 0.5mA."

### **(DK)** Advarse !

Usynlig laserstrålning ved åbning når sikkerhedsafbrydere er ude af funktion. Undgå udsættelse for strålning.

## 2.1 ESD PROTECTION

- レンズには絶対に触れないでください。
- DO NOT TOUCH THE LENS.
- LINSE NICHT BRÜHREN.
- NE PAS TOUCHER LA LENTILLE.

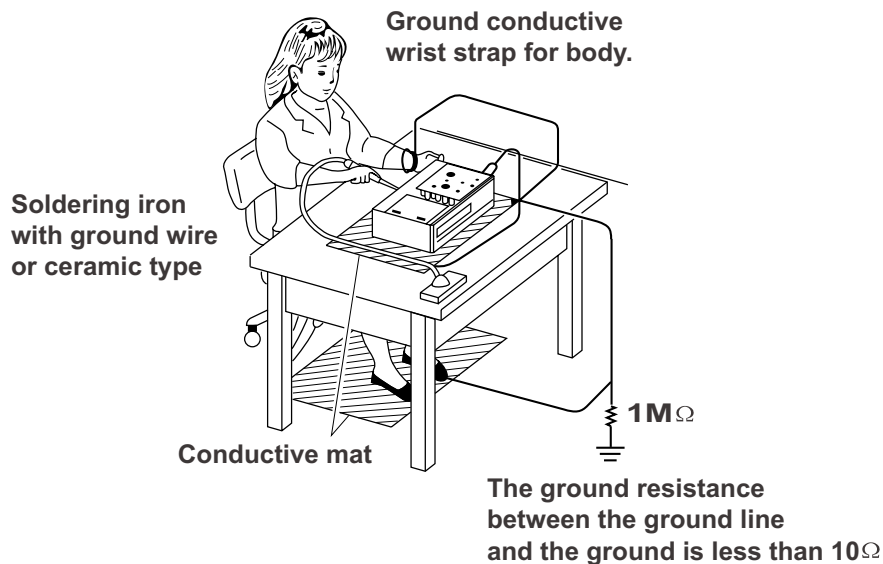
When the power supply is being turned on, you may not remove this laser cautions label. If it removes, radiation of laser may be received.

### PREPARATION OF SERVICING

Pickup Head consists of a laser diode that is very susceptible to external static electrocity.

Although it operates properly after replacement, if it was subject to electrostatic discharge during replacement, its life might be shortened. When replacing, use a conductive mat, soldering iron with ground wire, etc. to protect the laser diode form damage by static electricity.

And also, the LSI and IC are same as above.



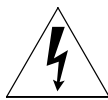
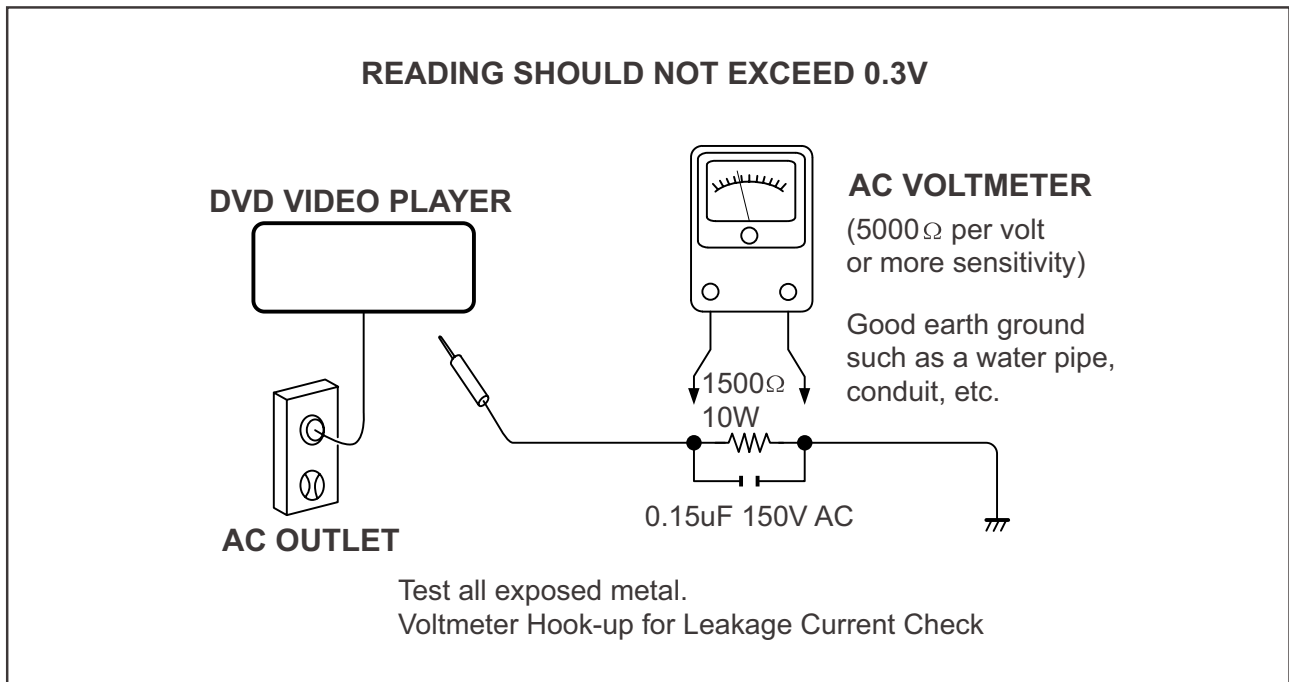
## SAFTY NOTICE

### SAFTY PRECAUTIONS

#### LEAKAGE CURRENT CHECK

Plug the AC line cord directly into a 120V AC outlet (do not use an isolation transformer for this check). Use an AC voltmeter, having  $5000\Omega$  per volt or more sensitivity. Connect a  $1500\Omega$  10W resistor, paralleled by a  $0.15\mu\text{F}$  150V AC capacitor between a known good earth ground (water pipe, conduit, etc.) and all exposed metal parts of cabinet (antennas, handle bracket, metal cabinet screwheads, metal overlays, control shafts, etc.).

Measure the AC voltage across the  $1500\Omega$  resistor. The test must be conducted with the AC switch on and then repeated with the AC switch off. The AC voltage indicated by the meter may not exceed 0.3V. A reading exceeding 0.3V indicates that a dangerous potential exists, the fault must be located and corrected. Repeat the above test with the DVD VIDEO PLAYER power plug reversed. NEVER RETURN A DVD VIDEO PLAYER TO THE CUSTOMER WITHOUT TAKING NECESSARY CORRECTIVE ACTION.



The lightning flash with arrowhead symbol, within an equilateral triangle, is intended to alert the user to the presence of uninsulated "dangerous voltage" within the product's enclosure that may be of sufficient magnitude to constitute a risk of electric shock to persons.

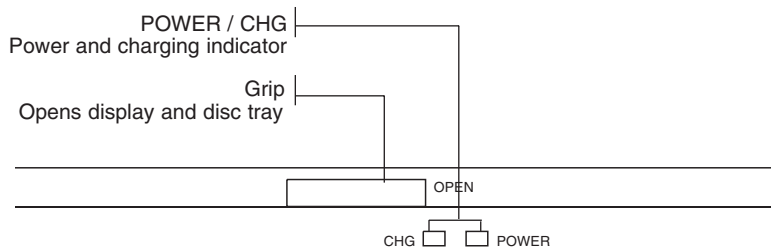


The exclamation point within an equilateral triangle is intended to alert the user to the presence of important operating and maintenance (servicing) instructions in the literature accompanying the appliance.

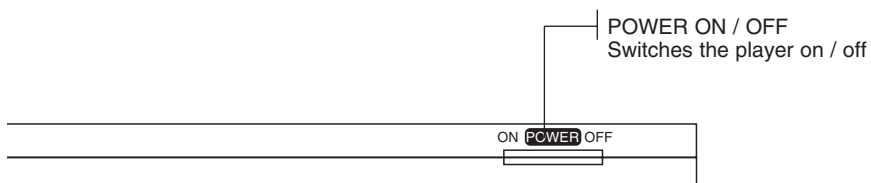
### 3.0 INSTRUCTIONS FOR USE

English

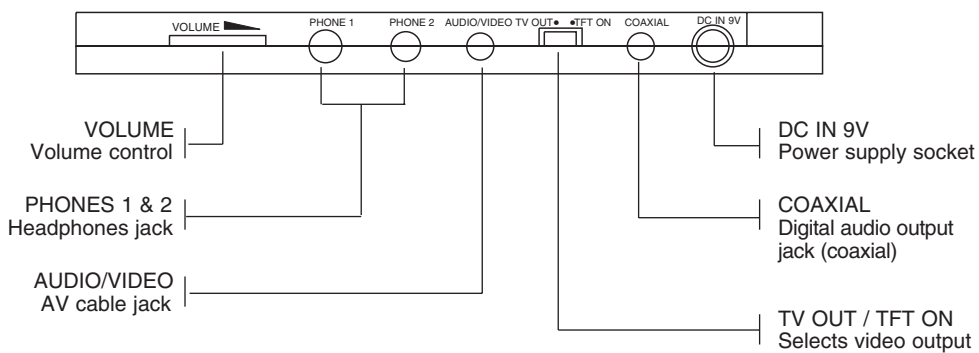
#### Front of player



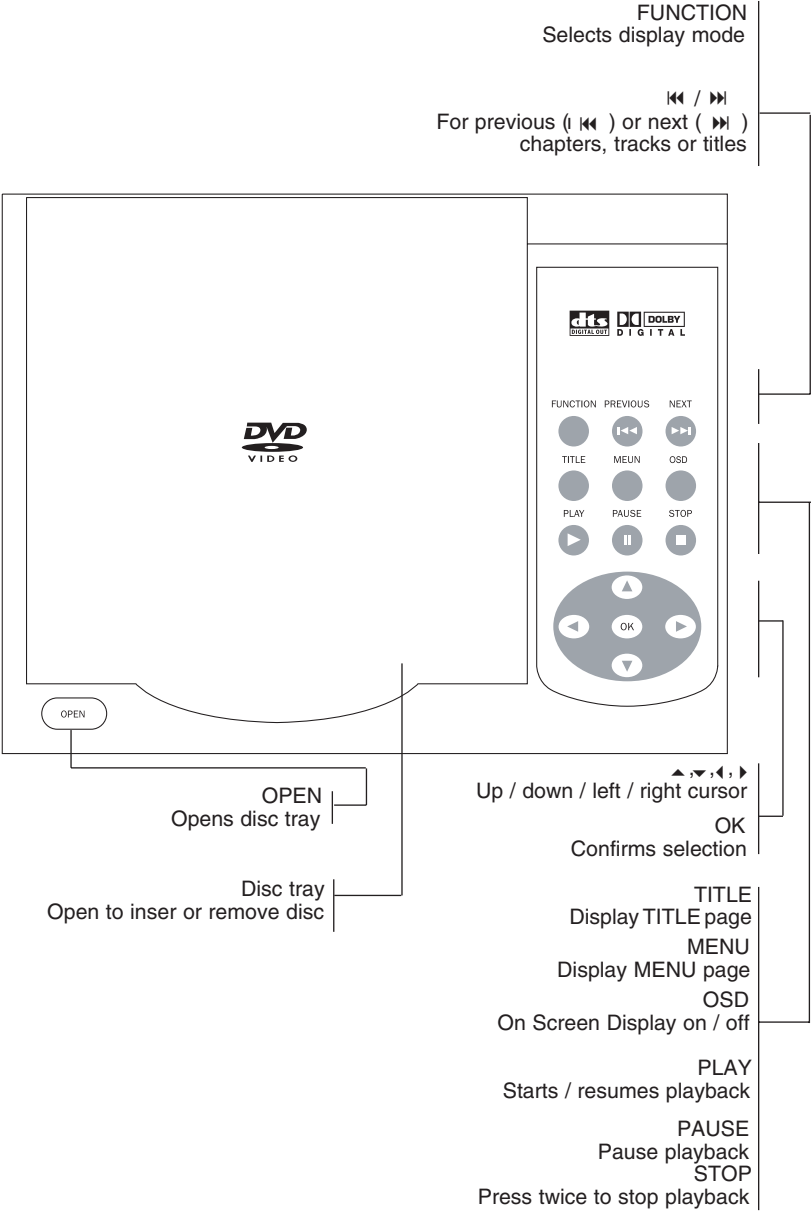
#### Left of player



#### Right of player



# Disc tray



## Remote control

OSD  
On Screen Display on / off

LANGUAGE  
Language selector

AUDIO  
Audio language selector

SCAN  
Playback of the first 10 seconds of each chapter / index on the disc

BOOKMARK  
Selects bookmark options

MENU  
Displays MENU page

TITLE  
Displays TITLE page

⏮  
Previous chapter, track or title

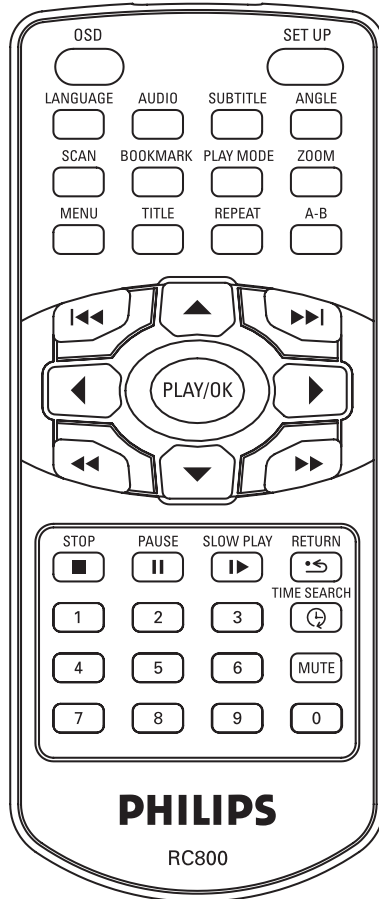
⏪  
Search backward

PLAY / OK  
Confirms selection and starts playback

STOP  
Press twice to stop playback

PAUSE  
Pause playback

0-9  
Numerical keypad



SETUP  
Enters SETUP menu

SUBTITLE  
Subtitle language selector

ANGLE  
Selects DVD camera angle

PLAY MODE  
Selects play order options

ZOOM  
Enlarges / chapter / video image

REPEAT  
Repeats chapter / title / disc

A - B  
To repeat or loop a sequence in a title

⏭  
Next chapter, track or title

⏩  
Search forward

⬆, ⬇, ⬅, ⬇  
Up / down / left / right cursor

SLOW PLAY  
Slow motion / Frame by frame playback

RETURN  
For VCD menu page

TIME SEARCH  
Searches by time

MUTE  
Muting player volume



## 4.0 Mechanical instructions

### 1. Back View as Fig.1

Remove screws to Disassemble the base

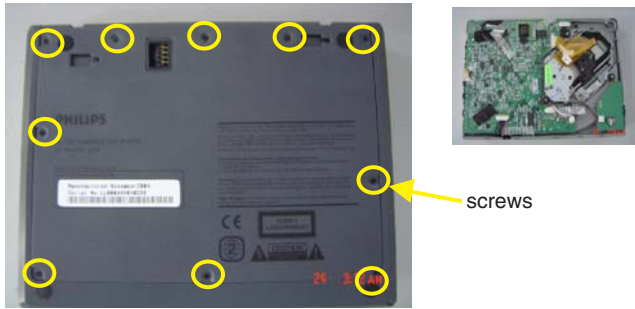


Fig.1

### 2. Soldered short pattern for laser diode as Fig.2

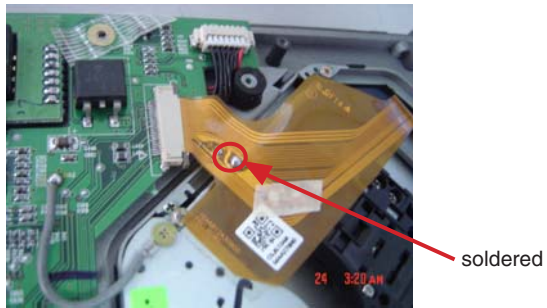


Fig.2

### 3. Disassemble the DVD drive and main board as Fig.3,4

Disconnect the DVD drive and main board

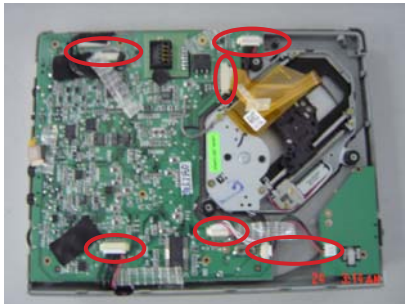


Fig.3

Disassemble the key board and other parts



Fig.4

### 5. Remove top cover as Fig.5



Fig.5

### 6. Disassemble the IF board and HV board as Fig.6



Fig.6

### 7. Detach the LCD TFT as Fig.7

Take off the screws to remove LCD TFT



Fig.7

## 5.0 TROUBLESHOOTING & SERVICE TIPS

### 5.1 Procedure to change regioncode

1. Power on player and open DVD Door.
2. Press <Set Up> at Remote Control. In <Set Up Menu> select <Preferences>.
3. For PET700 - Press successively 2 5 2 3 1 5.◀.▼.
4. Display will show <Region Code 2> for Europe:
5. Press key to input preference region code (see below table).
6. Switch off and re-switch on the product.
7. Verify Region code change done.

Region Code	Region
1	USA
2	EUROPE
3	ASIA PACIFIC
4	AUSTRALIA, NEW ZEALAND, LATAM
5	RUSSIA, INDIA
6	CHINA

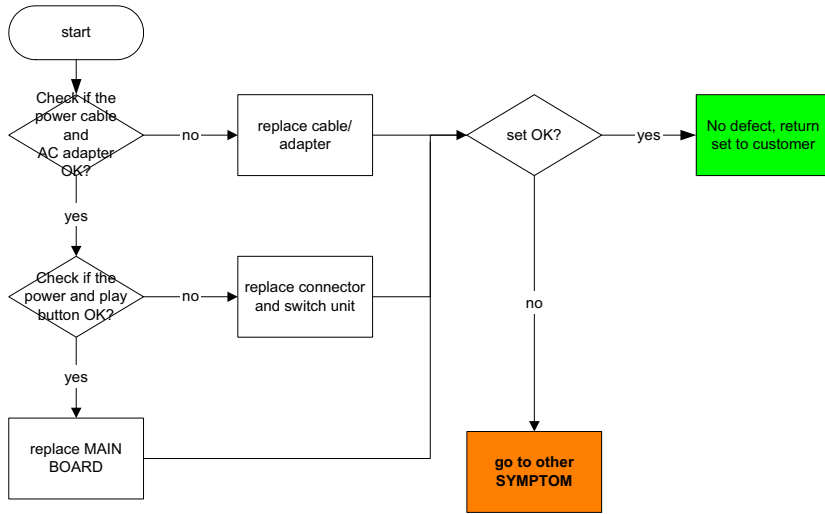
#### REMARKS:

1. Password is **CONFIDENTIAL**.

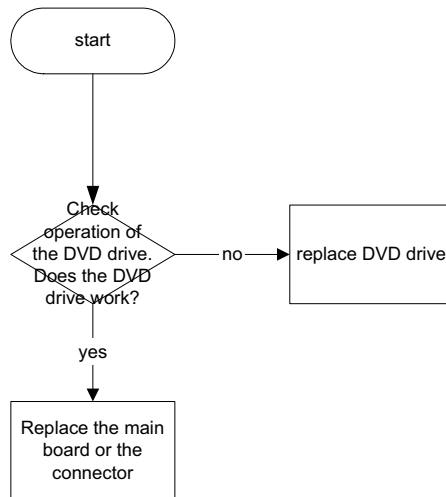
2. Region code is printed on product type plate. Due to DVD legislation region codes different to assigned region may not be released.

## 5.0 TROUBLESHOOTING & SERVICE TIPS

### SYMPTOM: NO POWER, NO GREEN LED

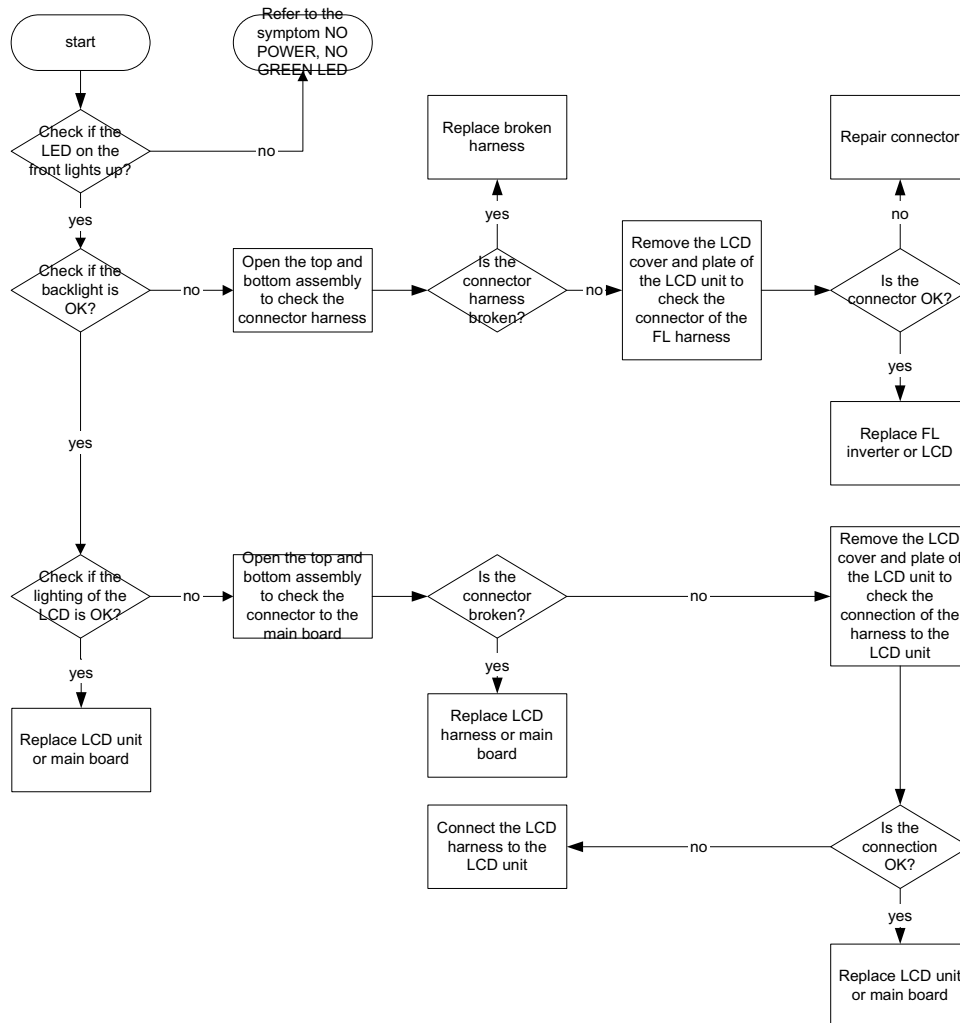


### SYMPTOM: NO IMAGE OR SOUND COMES OUT FROM THE EXTERNAL OUTPUT

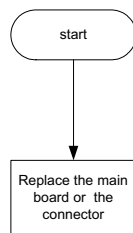


## 5.0 TROUBLESHOOTING & SERVICE TIPS

### SYMPTOM: THE INITIAL SCREEN IS NOT DISPLAYED ON THE LCD

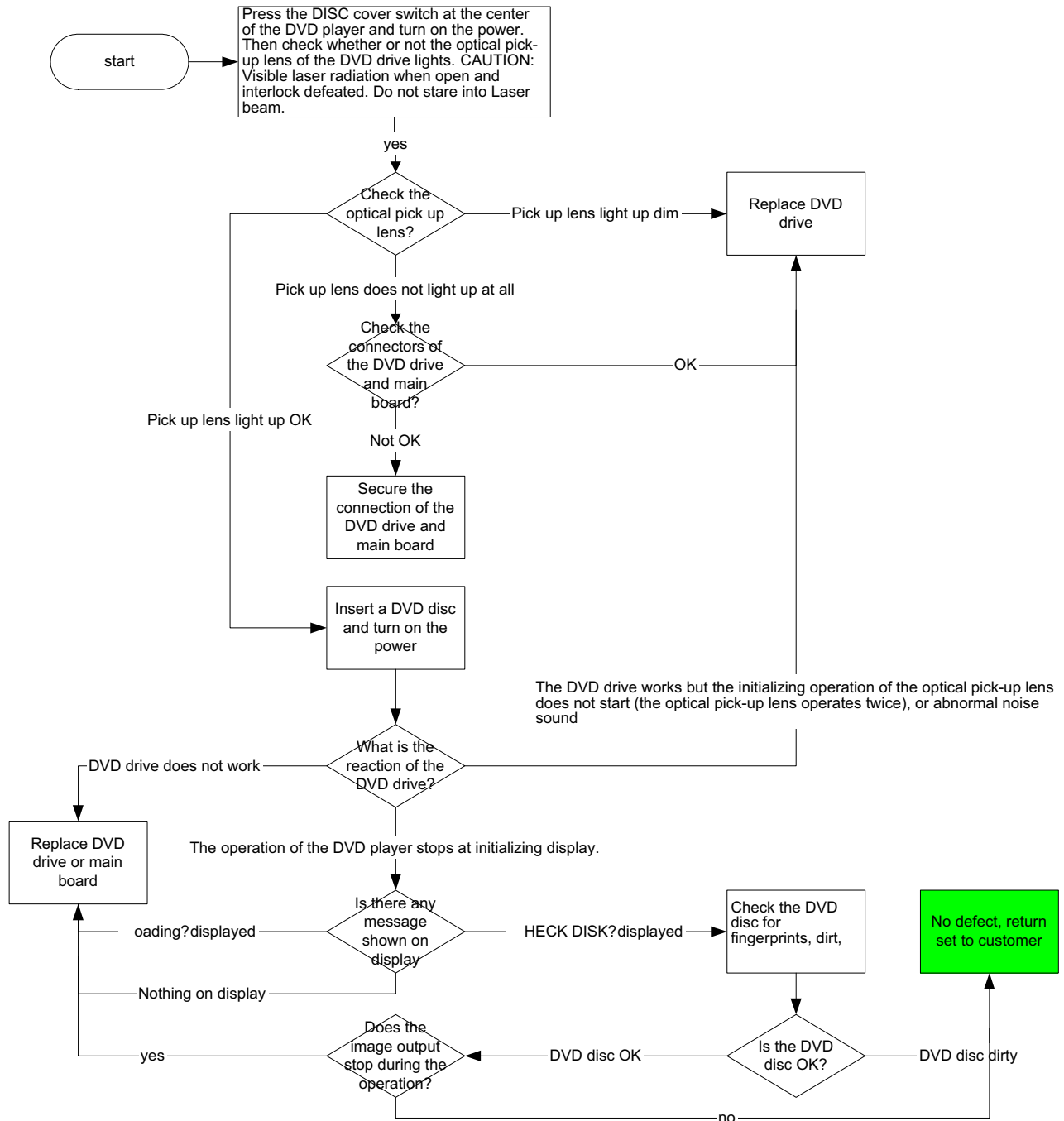


### SYMPTOM: NO IMAGE OR SOUND COMES OUT FROM THE EXTERNAL INPUT



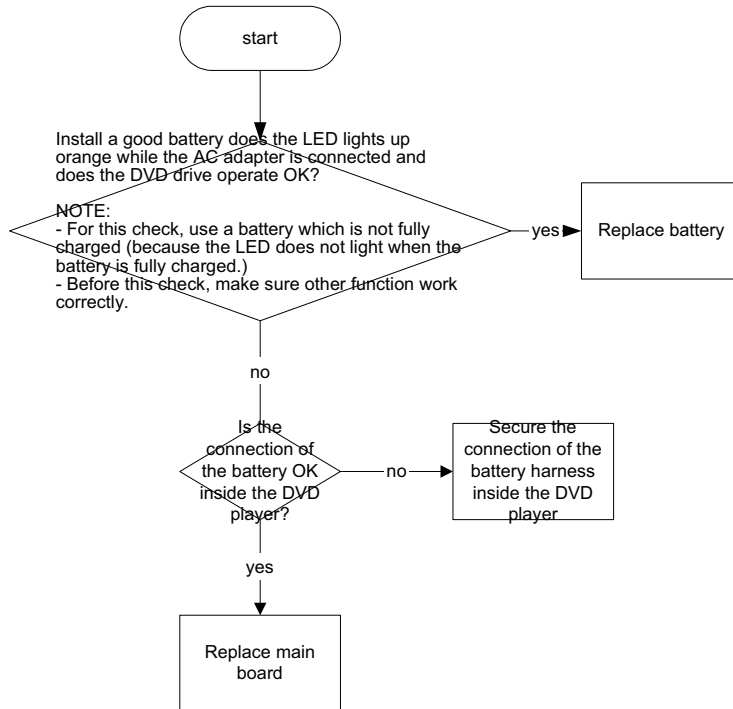
## 5.0 TROUBLESHOOTING & SERVICE TIPS

### SYMPTOM: THE DVD DRIVE DOES NOT WORK

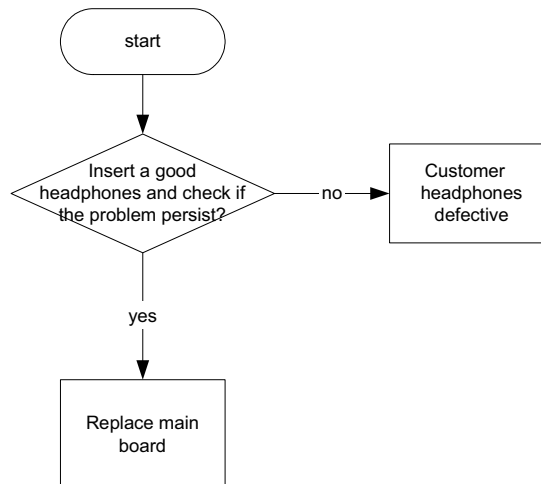


## 5.0 TROUBLESHOOTING & SERVICE TIPS

### SYMPTOM: THE DVD DRIVE DOES NOT OPERATE WITH BATTERY

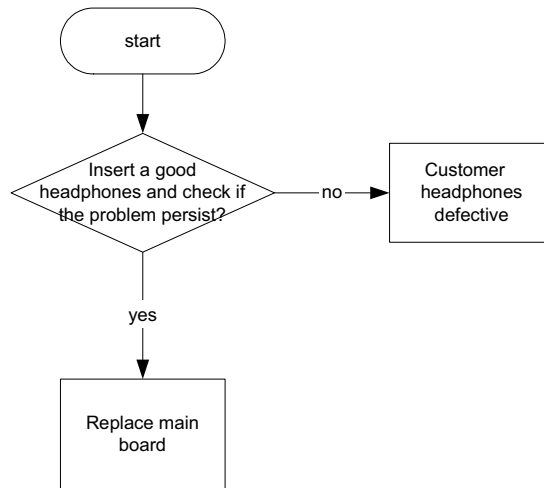


### SYMPTOM: NO SOUND COMES FROM THE HEADPHONES

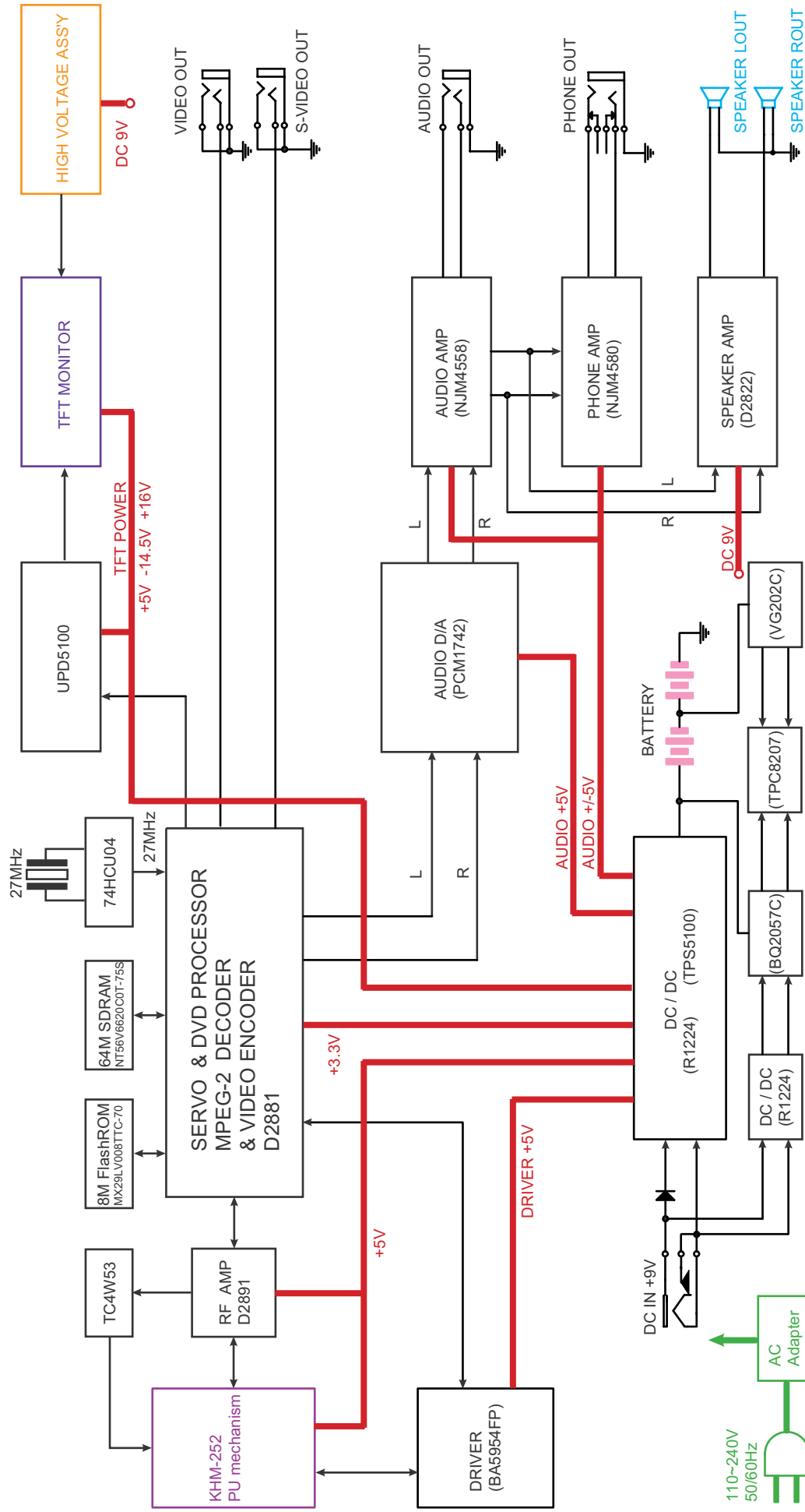


## 5.0 TROUBLESHOOTING & SERVICE TIPS

### SYMPTOM: NO SOUND COMES FROM THE HEADPHONES

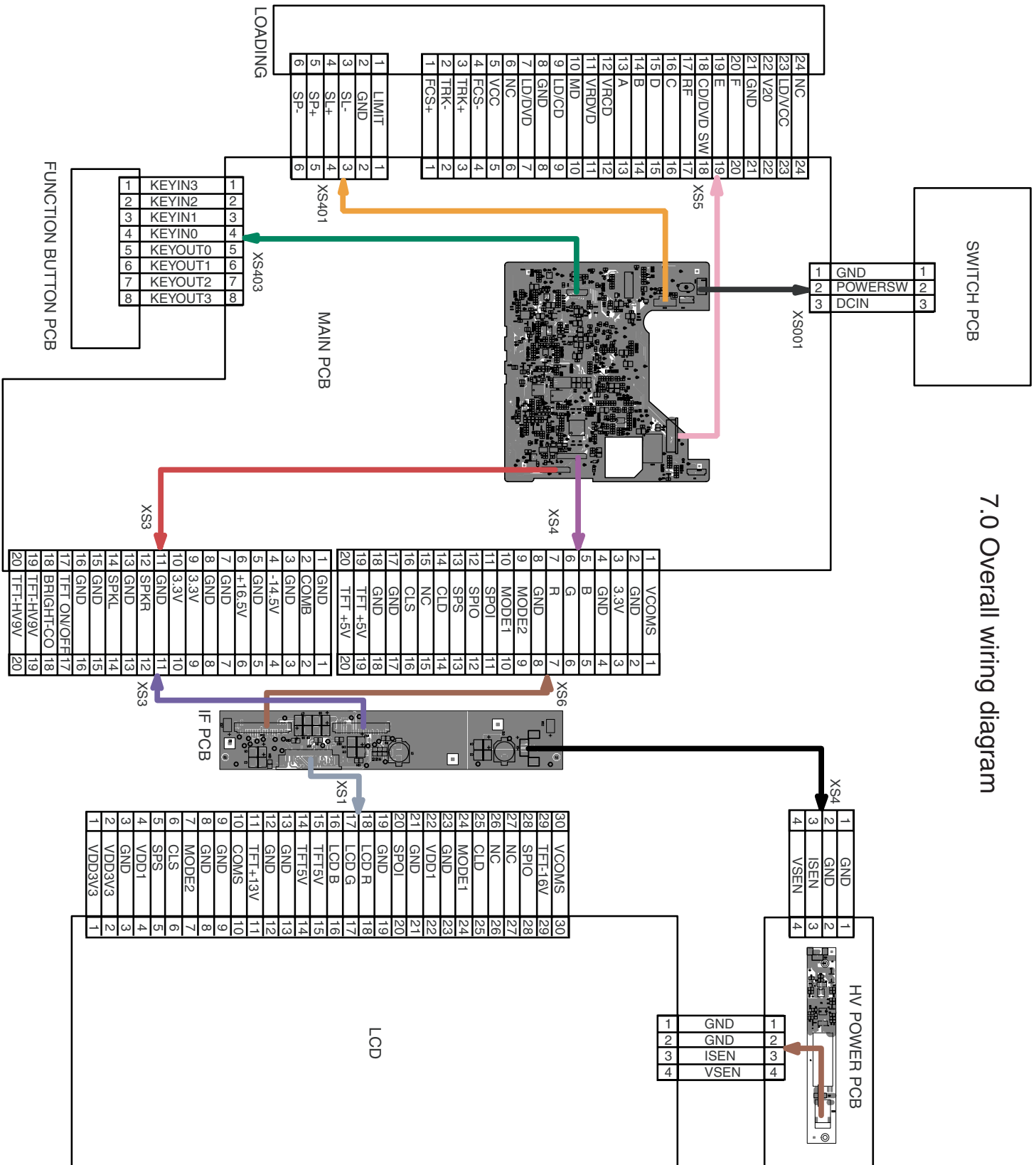


# 6.0 OVERALL BLOCK DIAGRAM



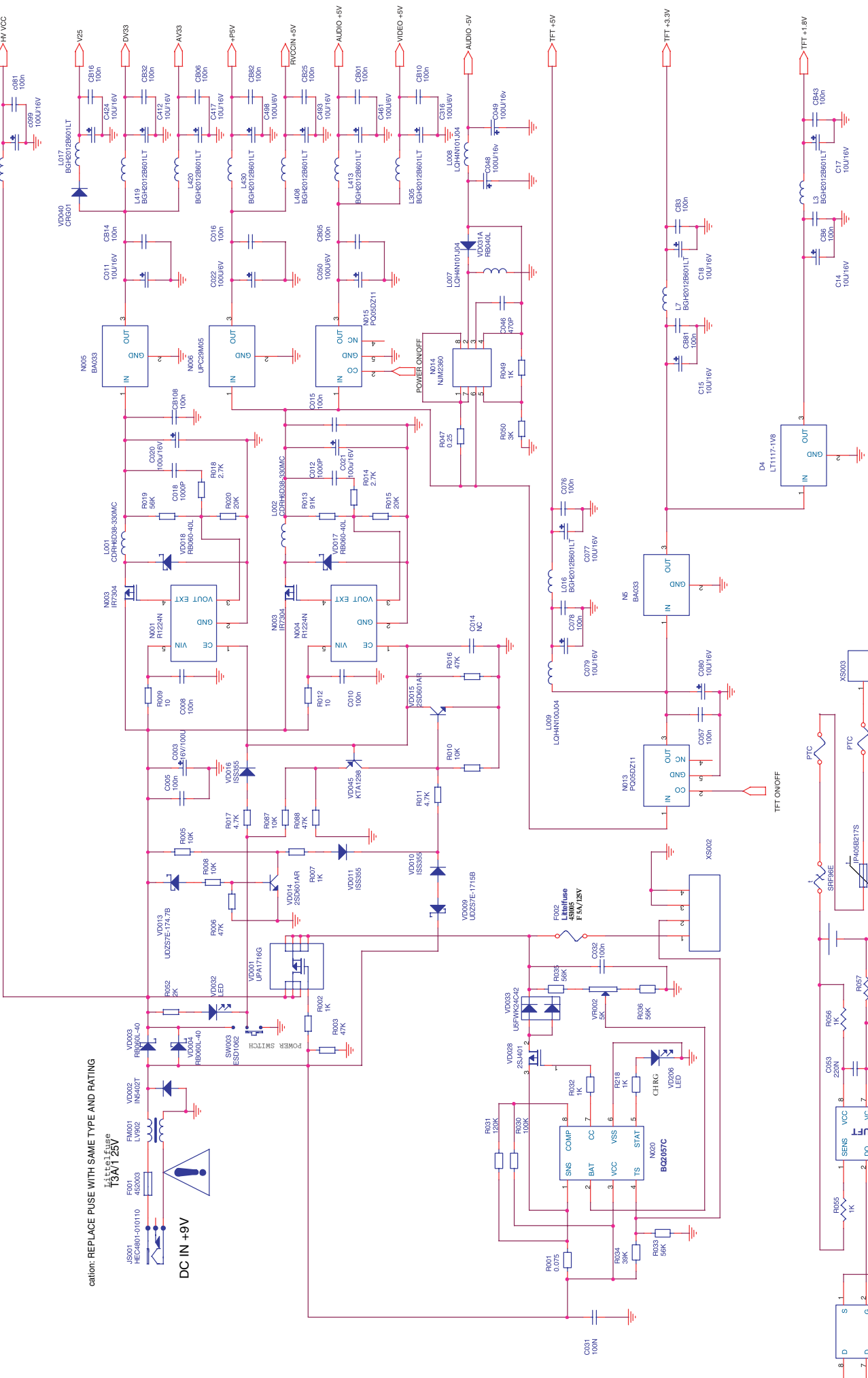


# 7.0 Overall wiring diagram

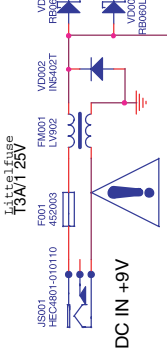


8.0 ELECTRICAL DIAGRAM

DC POWER CIRCUIT DIAGRAM

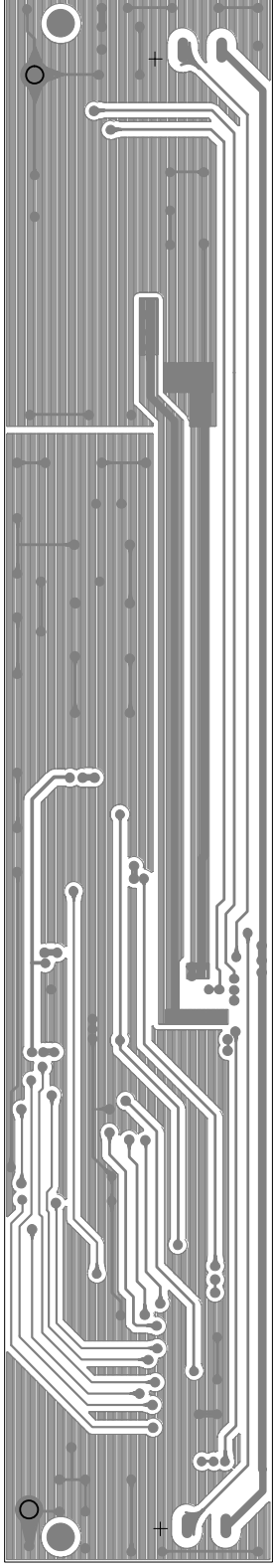
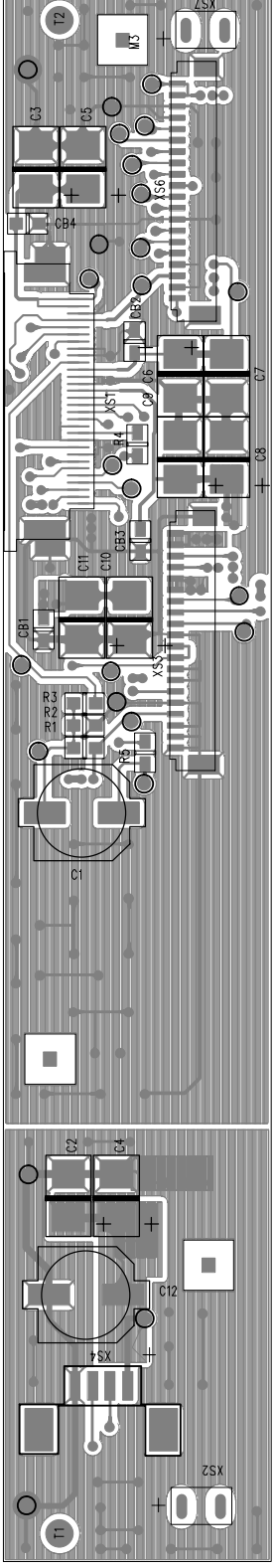


caution: REPLACE FUSE WITH SAME TYPE AND RATING

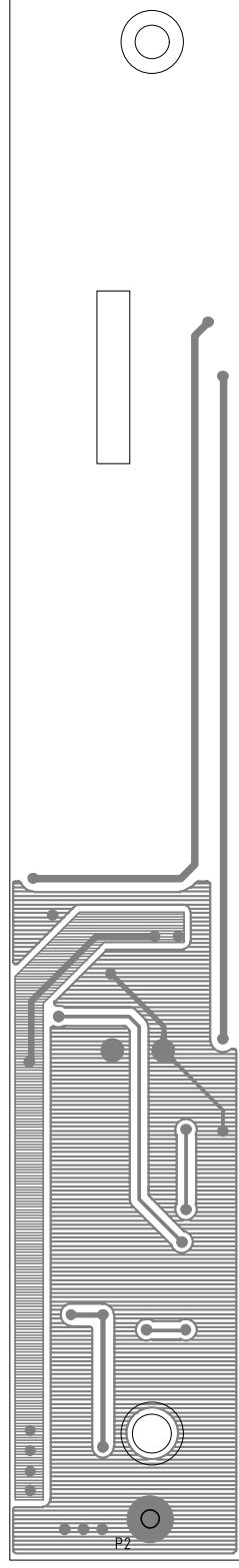
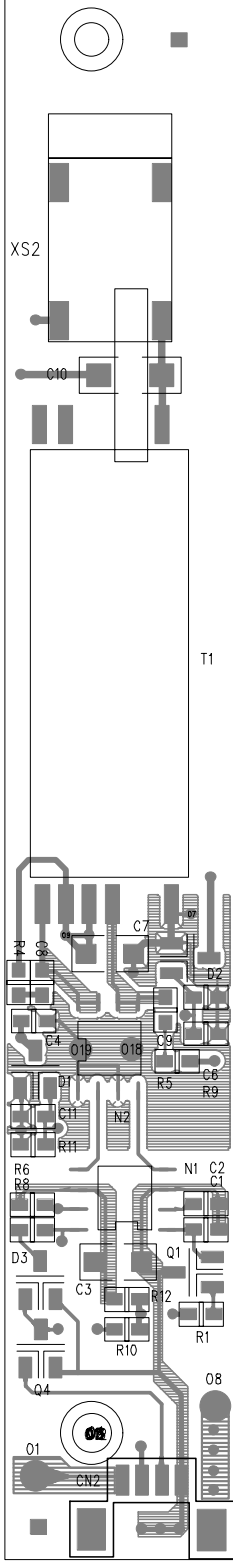


1.3A 1.25V

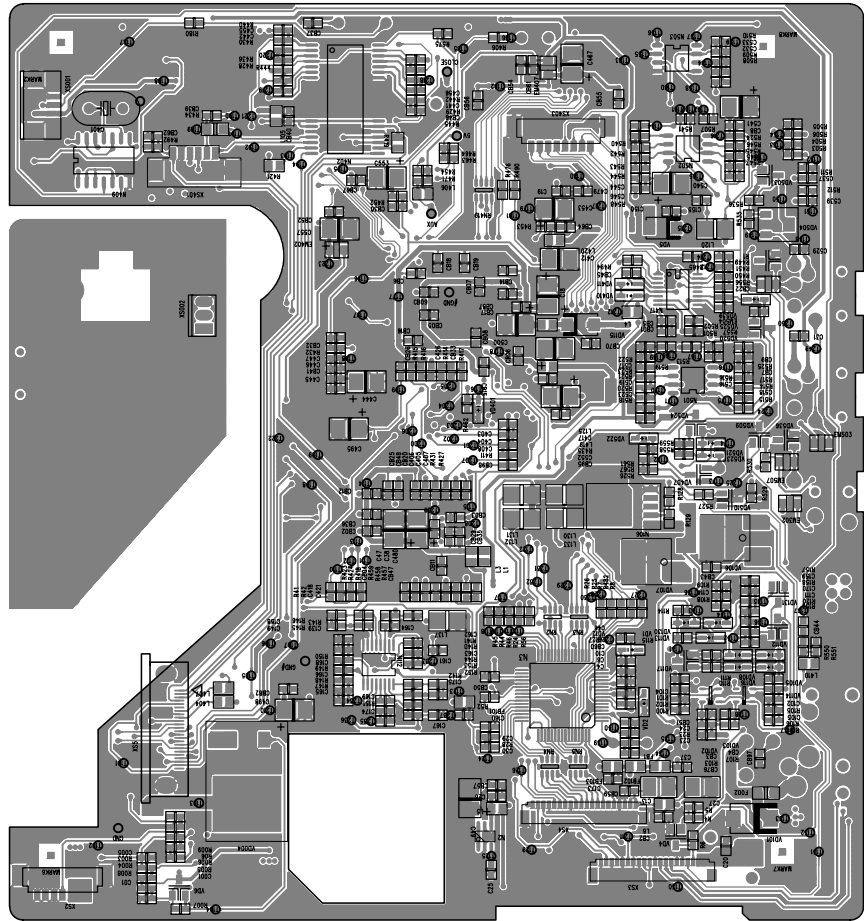
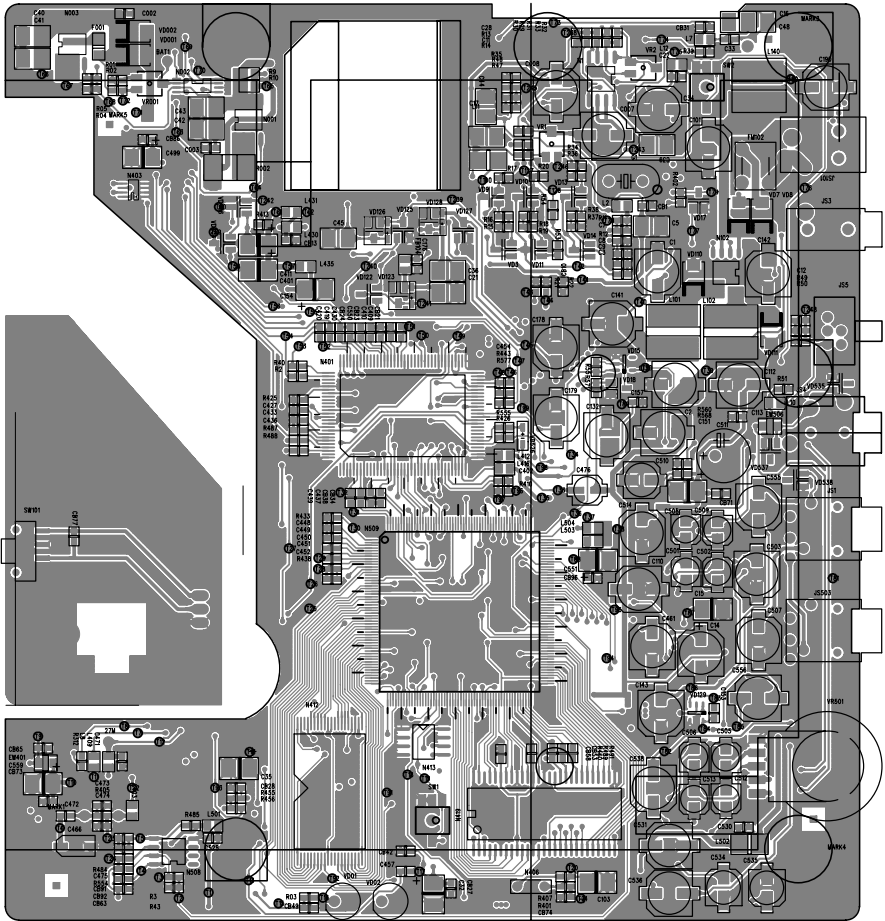




DVD1731T-AS HV PCB BOARD DIAGRAM



9.0 COMPONENT LAYOUT DVD1650H HV PCB BOARD DIAGRAM



PET700 MAIN BOARD DIAGRAM

## 10. SERVICE PART LIST


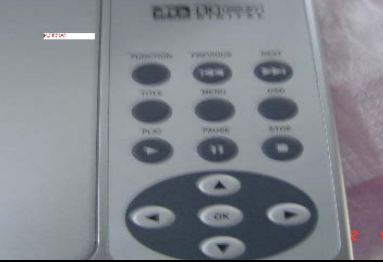
### Service parts list on PET700

Service 12NC	Model	Accessory description	Photo
99400000722	PET700	BATTERY	
994000002875	PET700	IF PCB ASS'Y	
994000002876	PET700	MAIN PCB ASS'Y	
994000002877	PET700	FUNCTION PCB ASS'Y	
994000002878	PET700	HV PCB ASS'Y	
994000002879	PET700	TFT LCD	
99400000724	PET700	REMOTE CONTROL	
994000002891	PET700	20 PIN HARNESS (LE105)	
994000002892	PET700	20 PIN HARNESS (L140)	

## 10. SERVICE PART LIST

99400000726	PET700	AV CABLE	
994000002893	PET700	SPEAKER	
99400000727	PET700	TRAVEL BAG	
994000002894	PET700	DV23 LOADER	
99400000725	PET700/00/05/44	CAR CIGARTE ADAPTOR	
99400000728	PET700/05	ADPV18A ADAPTOR /05	
99400000723	PET700/00	ADPV18A ADAPTOR /00	
994000002897	PET700/44	ADPV18A ADAPTOR /44	
994000002156	PET700/75	ADPV18A ADAPTOR /75	

## 10. SERVICE PART LIST

994000002881	PET700	TOP COVER	
994000002882	PET700	DISPLAY FRAME	
994000002883	PET700	MIDDLE CABINET	
994000002884	PET700	BOTTOM CABINET	
994000002885	PET700	BASE COVER	
994000002886	PET700	DOOR	
994000002988	PET700	CONTROL KEY PAD	
994000002895	PET700	DOOR SPRING	
994000002887	PET700	OPEN BUTTON SPRING	
994000002888	PET700	TOP COVER LOCK SPRING	



## 11.0 REVISION LIST

Version 1.0 (3141 785 30560)

Initial release PET700/00/05/44/75

Version 1.1 (3141 785 30561)

Chapter 10:

Service parts list adapted with new parts and revised 12NC as listed below

- Added photo on speaker (994000002893)
- Deleted DVD mark (994000002889)
- Added the new part control key pad (994000002988)