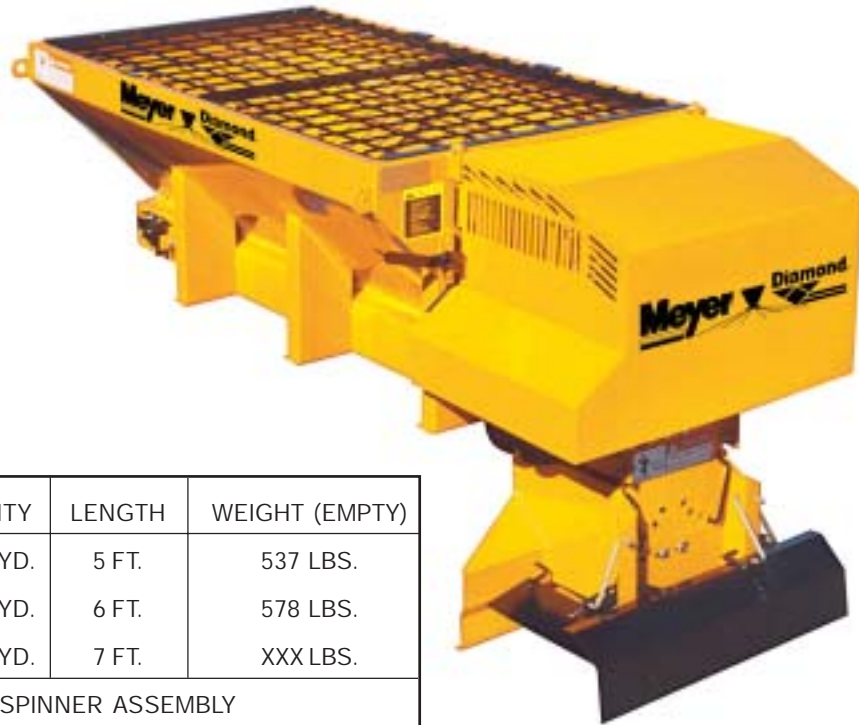




# INSTALLATION <sup>and</sup> OPERATING INSTRUCTION MANUAL

LOW PROFILE PV SERIES  
INSERT HOPPER SPREADER  
5 FT. 6FT. 7FT.



PART NO.	CAPACITY	LENGTH	WEIGHT (EMPTY)
62567 (STEEL)	.56 CU. YD.	5 FT.	537 LBS.
62577 (STEEL)	.68 CU. YD.	6 FT.	578 LBS.
62578 (STEEL)	.80 CU. YD.	7 FT.	XXX LBS.
62573 (STEEL)	SPINNER ASSEMBLY		

## INCLUDED IN THIS MANUAL

<b>Safety Instructions</b> .....	<b>2</b>
<b>Spreader Mounting Instructions</b> .....	<b>3</b>
<b>Operating Instructions</b> .....	<b>6</b>
<b>Maintenance</b> .....	<b>9</b>
<b>Parts Drawings and Parts Lists</b> .....	<b>10</b>
<b>Name Plate Information</b> .....	<b>18</b>
<b>Warranty</b> .....	<b>Back Page</b>

# THE BEST SAFETY DEVICE IS A CAREFUL OPERATOR!

## SAFETY ALERT SYMBOL



THIS SYMBOL MEANS **ATTENTION!**  
**BECOME ALERT!**  
**YOUR SAFETY IS INVOLVED!**

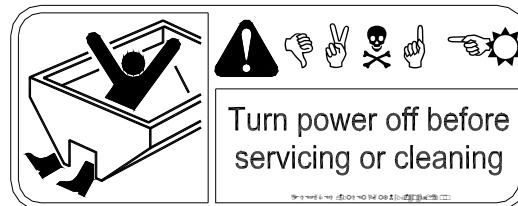
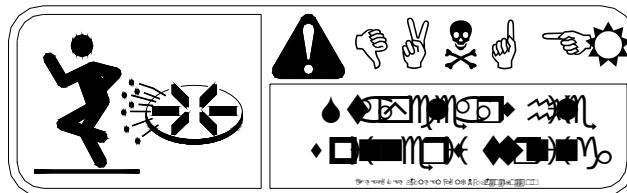
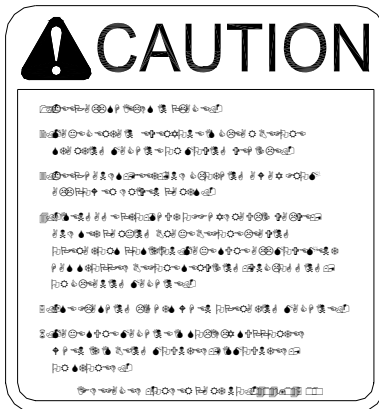
PLEASE READ AND UNDERSTAND COMPLETELY BEFORE DOING!

## SAFE EQUIPMENT INSTALLERS and OPERATORS:



**TURN OFF ALL POWER BEFORE PERFORMING ANY SERVICE OPERATIONS**

- FOLLOW RECOMMENDED OPERATING PROCEDURES.
- KEEP EQUIPMENT IN SAFE OPERATING CONDITION AT ALL TIMES.
- RECOGNIZE AND AVOID HAZARDS WHILE OPERATING, SERVICING AND MAINTAINING EQUIPMENT.



**NOTICE: INSTRUCTIONAL MATERIAL AND PARTS LISTS INCLUDED IN THIS MANUAL ARE SUBJECT TO CHANGE WITHOUT NOTICE.**

# INSTALLATION AND ASSEMBLY INSTRUCTIONS

## INSTALLATION INSTRUCTIONS:

The Meyer and Diamond LPV Series Spreaders can mount and store as a single unit. Meyer and Diamond LPV Series Spreaders will mount on most medium and heavy duty pick-up trucks.

## WARNING

**THE SPREADER UNIT MUST BE SECURELY FASTENED TO THE VEHICLE. FAILURE TO NOT PROPERLY RESTRAIN THE UNIT COULD PERMIT THE UNIT TO BREAK FREE FROM THE TRUCK AND CREATE A POTENTIAL FOR A LIFE THREATING ACCIDENT.**

**DO NOT OVERLOAD THE VEHICLE.** It is quite possible to overload the vehicle by improperly mounting or over loading the spreader. This could result in dangerous stability and braking problems. Always consult and follow the truck manufacturer's instructions.

## WARNING

**BEFORE BEGINNING ANY INSTALLATION ON THIS UNIT,** disconnect the spreader battery negative cable if already installed.

1. Place the Spreader in the rear of truck with the engine/hydraulic motor to the rear of the truck. Center the spreader (side to side) in the truck. The spreader should extend past the rear of the outer most part of the truck (i.e: truck bed, bumper) approximately 18 inches.

## CAUTION

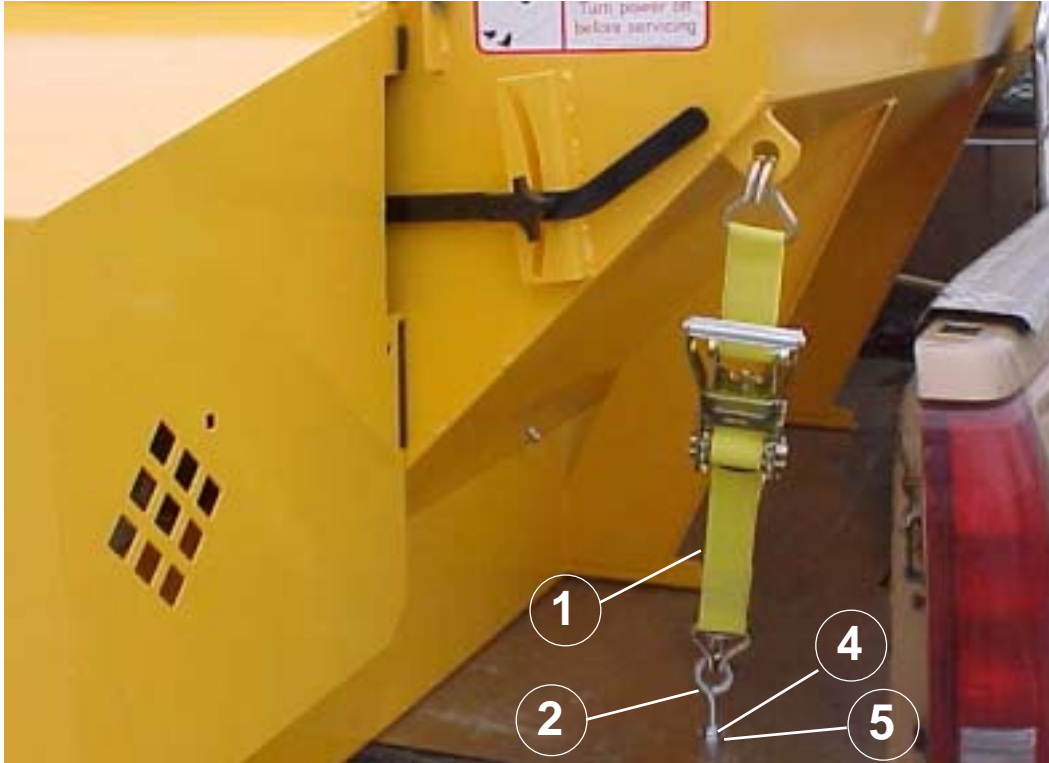
**INSURE THAT THE SPREADER CANNOT TIP WHEN THE SPINNER ASSEMBLY IS ATTACHED**

### SPINNER ASSEMBLY

- a. Raise engine shroud. (If engine driven model)
  - b. Slide the spinner frame assembly into the rear of the longitudinal with the spinner back plate toward the rear.
  - c. Bolt the spinner to the longitudinals and engine plate using the six (6) 3/8-16 x 3/4" carriage bolts, 3/8" flatwashers, lockwashers, and 3/8" nuts from hardware bag located in the shipping carton.
  - d. Install roller chain between the gear box sprocket and the spinner sprocket. Make sure sprockets are in line with each other. The roller chain is tightened first by loosening all four (4) 3/8" bolts on the back plate; then pull the entire bearing/shaft assembly in such a way to achieve the proper amount of chain tension. Make sure the spinner shaft is straight up and down before re-tightening.
2. Reposition the spreader in the truck, just short of making contact with the rearmost part of the truckbed, bumper, pintle hook etc. Bolt the unit to the truck using a minimum of four (4) 3/8" - grade 5 bolts and corresponding washers and locknuts. The spreader is designed to sit flat on the bed of the truck, supported by the longitudinals/sides.

**DO NOT SUPPORT THE SPREADER BY THE BODY JACKS ALONE!! UNIT IS NOT DESIGNED FOR CHASSIS MOUNT APPLICATIONS!**

# HOLD DOWN KIT



## PARTS LIST FOR HOLD DOWN KIT

ITEM	PART NUMBER		QTY.	DESCRIPTION
	<b>62562</b>	<b>0002-306-00</b>	<b>1</b>	<b>HOLD DOWN KIT</b>
1	62602	04068-038-00	4	• Ratchet/Strap
2	62603	04048-504-02	4	• Bolt, 1/2" Eye
N/S	20307	04003-804-06	4	• Locknut, 1/2-13 Nylon Insert ZP
4	62604	04003-801-11	4	• Nut, 12-13 Hex ZP
5	62605	04004-002-16	8	• Flatwasher, 3/4" U.S.S. ZP
6	20355	04004-002-10	8	• Flatwasher, 1/2" U.S.S.ZP

Parts indented are included in the assembly under which they are indented.

## INSTALLATION INSTRUCTIONS



### CAUTION!

READ ALL OF THE INSTALLATION INSTRUCTIONS BEFORE STARTING.

Before starting, verify that this mounting method is acceptable to the vehicle manufacturer.

Attach the hold down at each corner of hopper as shown. Locate and drill four .531 (17/32") diameter holes for eye-bolts in the truck bed (position may vary from that shown). Straps must be positioned at opposing angles so that spreader cannot slide forward or rearward. Mount eye-bolts as shown, with locknuts and flatwashers on the bottom side. Assemble ratchet/strap to eye-bolts. Tighten hold downs evenly. **Do not over tighten, damage will result to the spreader or the truck.**

# INSTALLATION INSTRUCTIONS ELECTRIC THROTTLE CONTROLS

(FACTORY INSTALLED ACTUATORS)



## WARNING

**Before beginning any installation on this unit, disconnect the PV Spreader battery negative cable (if already installed).**

1. Spreaders with factory installed throttle controls do not require installer hookup to the engine. The actuator has been installed and tested at the factory.
2. Raise the engine shroud. The installer will have to remove the ties securing the coiled actuator cable to the top of the engine.
3. The throttle actuator cable plugs into the in-cab control panel after being routed from the cab of the vehicle to the rear of the mounted spreader.
4. Select a suitable location in the cab of the vehicle to mount the throttle control box.  
**(Do not mount at this time.)**



## WARNING

**Consult vehicle manufacturer for acceptable mounting locations. Improperly mounting the control box could interfere with the air bag(s) and the other functions of the occupant protection systems, such as knee bolsters!**

5. After the location of the control panel is determined, the cable must be routed to the front of the spreader. Route the cable under the cab and up to the front of the spreader securing as needed. Allow enough cable for the control panel to be mounted in the cab.
6. The routed cable must be clear of all moving or hot parts on the spreader or the vehicle. Secure the cable with the ties provided. Excess cable must be coiled up and secured.
7. Mount the control panel (with the screws supplied).
8. For a permanent cable mount, a mounting bracket is supplied.
9. Attach the positive battery cable (each end should have a red rubber boot) to the positive terminal on the solenoid and to the terminal of the battery. Make sure these protective boots are covering the positive terminal post on the battery and on the solenoid.



## WARNING

**Use safety glasses or other face protection against possible battery explosion. Do not smoke and avoid other sources of ignition.**

10. Connect the negative battery terminal to the engine mount bolt. When finished, make sure all wires are away from moving parts and lower engine shroud.
11. Plug cable from spreader into socket mounted on truck.



## WARNING

**Never operate machine with engine shroud in upright position. Never climb into the hopper while the engine is operating or capable of being operated. Serious injury or death might occur.**

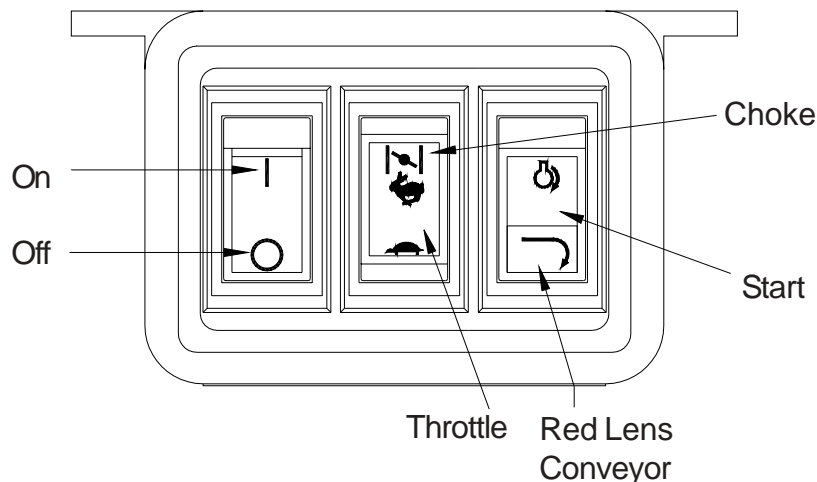
**NOTE:** Read and fully understand the owners manual supplied by the engine manufacturer before operating this equipment. Not doing so, endangers your safety and the warranty of the engine.

# OPERATION

## **WARNING**

**BEFORE OPERATING THE CONTROL PANEL - MAKE SURE THAT NO ONE IS INSIDE THE HOPPER OR NEAR THE SPINNER.**

1. **Manual Throttle:** All gasoline engine models come with a control panel. If your spreader is a manual throttle model, look at your control panel. It will have (3) controls mounted on it. The one on the far left is the start button. The right toggle is the electric clutch control. When the switch is in the "OFF" position, the electric clutch is disengaged and the conveyor and spinner will stop. In the "ON" position, conveyor and spinner will operate. The middle control is the throttle. Your engine is equipped with a semi- automatic choke. To activate the choke, pull the throttle cable all the way out. To remove the choke function when engine is warm, push throttle cable in, to desired engine RPM.
2. **Electric Throttle Control Panel Switch Functions**  
(Sequence of Operations)



- A. **ON/OFF** System power activated (ready to start). Spreader engine is not running. Spreader conveyor is not engaged.
- B. **START** (Engine only)
  1. Open fuel shut off valve on engine.
  2. **On** On switch depressed.
  3. **Choke** (cold engine ) Hold down for 5 seconds to move the throttle actuator to the choke position.  
**Note: Choking a warm engine may not be necessary.**
  4. **Start** Hold down until engine starts.
  5. **Turtle** Decreases throttle speed - adjust as engine warms up. Will stop the choke function.  
**Rabbit** Increases throttle speed.

## OPERATION CONT.

- C. **TO ENGAGE Spreader Conveyor,**
1. Push CONVEYOR switch only after you are sure no one is in the hopper or near the spinner! This lights up the red indicator light, if light does not light, take care to verify that the light is not malfunctioning.
- D. **TO CONTROL Conveyor Speed,**
1. Hold RABBIT to increase speed. NOTE: Do not hold switch in HI position after the desired RPM is achieved or you will choke and/or stall the engine.
  2. Hold TURTLE to decrease speed.
- E. **TO DISENGAGE Spreader Conveyor,**
1. Tap START switch momentarily so that red indicator light goes out. Do not fully depress the START switch, only half way is needed. Only the conveyor stops, the engine continues to run.
- F. **TO TURN ENGINE OFF** (with or without conveyor running),
1. Depress TURTLE on throttle control to reduce setting to idle (this prevents engine flooding and hard starting).
  2. Push OFF position on the ON/OFF switch.

**NOTE: OFF can be pushed at anytime during spreader operation to cut power to the unit . However, you should normally use steps under F above.**

(Once the off switch is depressed - the starting procedure must be followed for engine re-start.)

- G. Do not attempt to start the engine with the conveyor engaged. (CONVEYOR switch light will be lit to indicating its' being on.)
- H. Close fuel shutoff valve on engine if unit is to be transported while not running.



## WARNING

1. As with all power equipment, safety is the number one concern.
2. Do not operate this equipment until you fully understand how it functions.
3. Before starting engine, be sure that no one is near the rear of the unit and that no one is inside the unit!
4. Do not start the engine or engage the conveyor (which is interconnected to the spinner); until everyone is clear from moving parts and flying material from the spinner.



## SPREADER OPERATION

- A. Start the engine and engage the clutch. The amount of material spread, depends on engine speed and gate opening. Decreasing RPM and/or gate height will decrease amount spread; the inverse holds true also. Notice that the electric clutch can be engaged or disengaged at any time and at any engine RPM. However, since engagement time and torque is almost instantaneous, to prevent premature spinner chain failure and chain tension loss, it is recommended that the electric clutch be engaged at the lowest possible RPM without stalling the engine.

**Before loading the spreader the first time, start and stop the conveyor several times to break in the clutch.**



## WARNING

**ALWAYS STAND AT A SAFE DISTANCE AWAY FROM THE SPINNER WHILE OPERATING ALWAYS WEAR EYE PROTECTION WHEN OUTSIDE OF THE TRUCK CAB WHILE SPREADER IS RUNNING.**

- B. Spread pattern depends on baffle settings and spinner RPM.
1. Speeding up or slowing down the engine will increase or decrease spread pattern width.
  2. Internal baffle adjustments will move the spread pattern to the right or left.
  3. External baffle adjustments will block spreading to the right or left side.

DESIRED SPREAD PATTERN	BAFFLE SETTING	
	INTERNAL	EXTERNAL
Centered Behind Truck	Both Down	All Three UP
Behind Truck and Left	RH - Down LH - Up	RH - Down LH - Up
Behind Truck and Right	RH - Up LH - Down	RH - Up LH - Down
Windrow Behind Truck	RH - Down LH - Down	All - Down

4. External Baffles can be lowered to an intermediate position to baffle down the particles that may otherwise leave the spinner at a high trajectory.



## MAINTENANCE



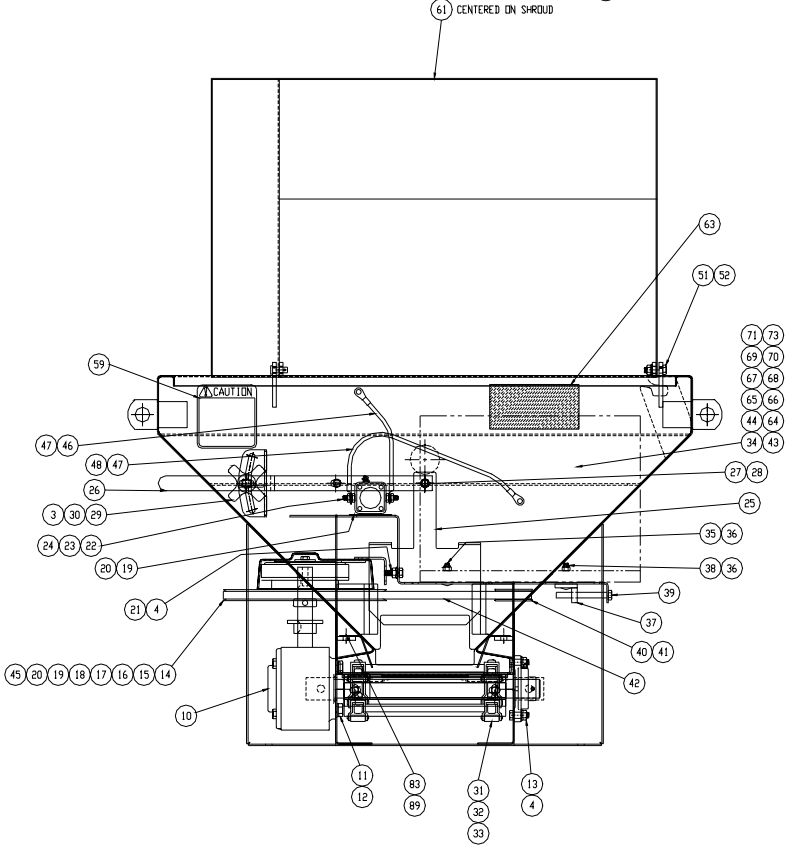
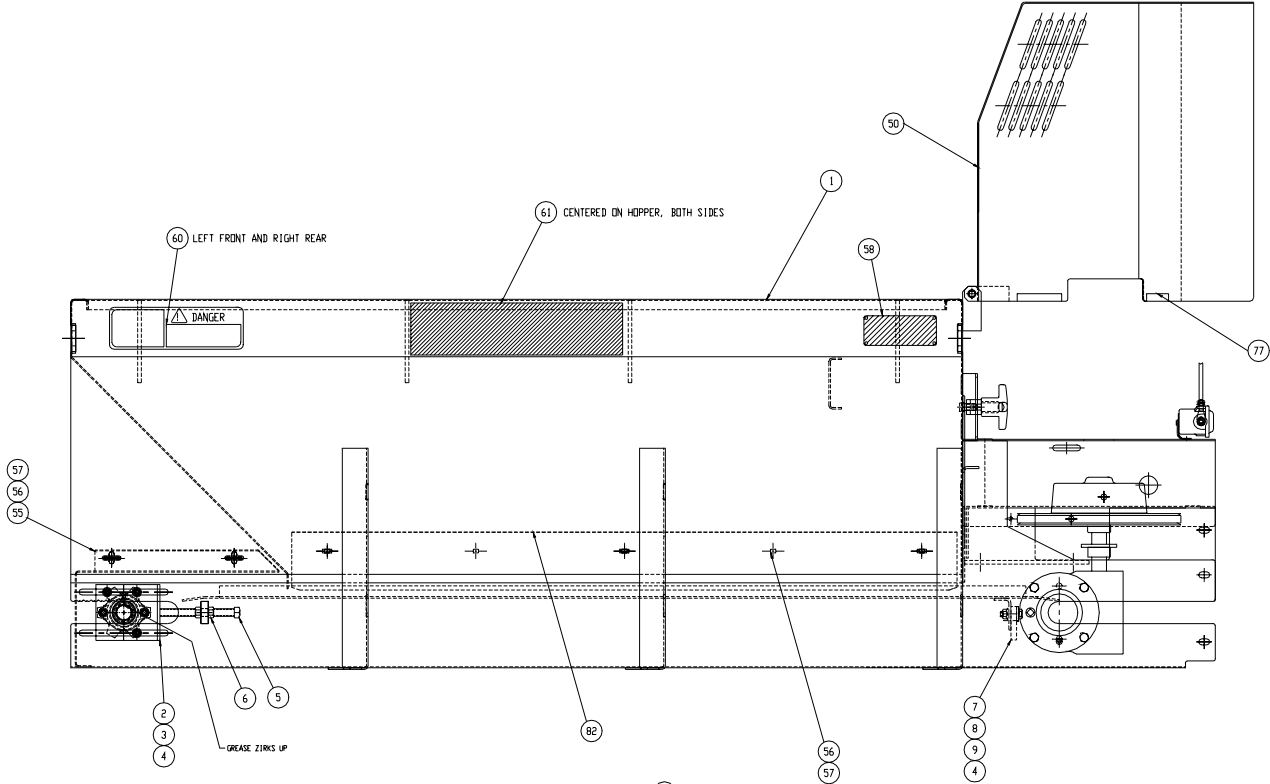
# WARNING

**DO NOT ATTEMPT TO LIFT THE SPREADER BY THE CENTER LIFT OR CORNER LIFT HOOKS WITH MATERIAL IN THE SPREADER.**

**BEFORE BEGINNING ANY MAINTENANCE ON SPREADER, DISCONNECT SPREADER BATTERY LEADS.**

1. Grease idler bearings on idler shaft take-up assembly, outboard bearing on gearbox output shaft, and spinner bearings every ten hours of operation.
2. Grease input shaft bearing on gearbox every fifty hours of operation. **CAUTION!** Over greasing may cause seal damage. The gearbox must be filled to oil level plug with SAE 90 gear type lubricant. Keep breather plug clean.
3. Drag chain slack on V-boxes should be checked periodically and taken up if distance between center line of front sprocket and point where chain contacts lower flange on longitudinal is less than eight (8) inches. **CAUTION!** Over tightening conveyor chain can cause serious drive train problems. Above distance must not exceed (20) inches.
4. If the spreader is equipped with a gasoline engine, it should be maintained per engine manufacturer's instruction. (Instructions and parts book is enclosed.)
5. V-belt tension must be maintained. The v-belt can be tightened by loosening engine hold-down bolts and sliding engine as required. **CAUTION!** Over tightening may damage gearbox.
6. Roller chain tension must be maintained. It is adjusted by loosening the spinner mounting bearings and sliding the bearings. Make sure the spinner shaft is straight up and down before retightening. Oil chain often and at end of season.
7. When the box is not in use, it should be washed out. If the box is put in storage, all surfaces should be oiled or painted after washing.
8. If chain becomes stuck or "froze" to the floor to the point where the clutch cannot pull the load, never attempt to free chain using a pipe wrench or any other tool on the output shaft. The gearbox is designed to accept torque from input shaft only. Trying to turn output shaft will strip the gears, thus voiding the warranty.

# LOW PROFILE PV ENGINE DRIVEN HOPPER ASSEMBLY



# PARTS LIST FOR LPV ENGINE DRIVEN HOPPER ASSEMBLIES

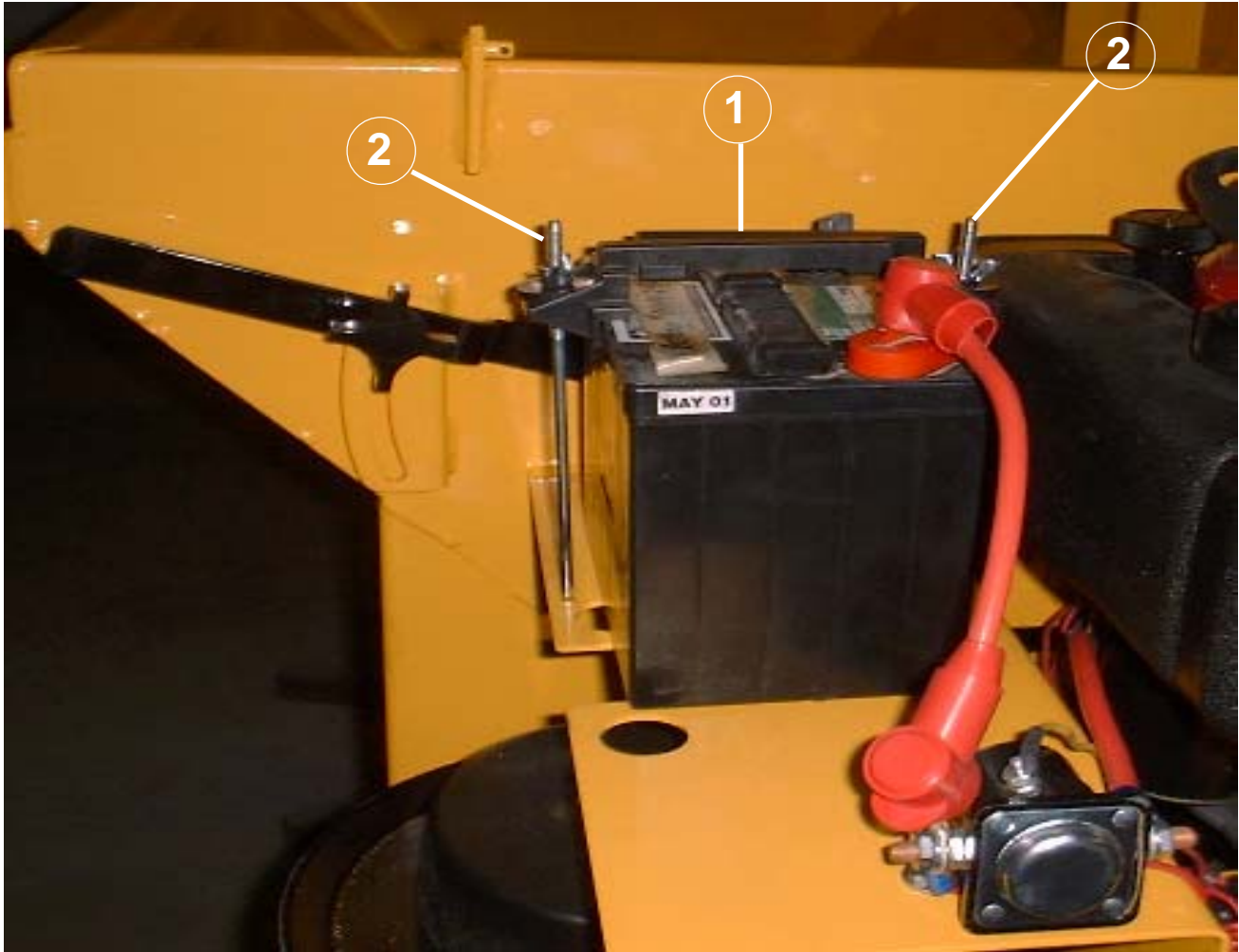
(Carbon Steel)

ITEM	PART NUMBER		QTY.	DESCRIPTION
1	60206	00117-302-01	1	Weldment, 5 Ft. Hopper
	62607	00117-302-02	1	Weldment, 6 Ft. Hopper
	62608	00117-302-03	1	Weldment, 7 Ft. Hopper
2	62609	00117-303-01	1	Assembly, Idler Shaft
3	62610	04003-033-02	7	Bolt, 3/8-16 X 1" Car. GR5 ZP
4	62611	04003-806-02	15	Nut, 3/8-16 Serrated Flange ZP
5	62338	04006-004-01	2	Setscrew, 1/2" x 5" Sq. HD
6	62612	04003-802-05	4	Nut, 1/2-13 Hex Jam ZP
7	62613	04076-120-00	1	Wiper, Chain
8	62614	00117-305-01	1	Bar, Chain Wiper
9	62615	04003-033-04	2	Bolt, 3/8-16 X 1 1/4" Car. GR5 ZP
10	62616	00117-306-00	1	Assembly, Gearbox (20:1 Superior)
11	62617	04003-005-14	4	Bolt, 1/2-13 X 3/4" HH GR5 ZP
12	20329	04004-001-09	4	Lockwasher, 1/2" Med. Split ZP
13	20050	04003-003-04	2	Bolt, 3/8-16 X 1 1/4 HH GR5 ZP
14	61161	04070-020-00	1	Pulley, Driven
15	61167	04138-017-00	1	Clutch, Electric
16	20027	04003-002-04	1	Bolt, 5/16-18 X 1" HH GR5 ZP
17	61168	04622-008-00	1	Cover, Clutch
18	62618	00117-307-00	1	Retainer, Clutch
19	62619	04003-001-05	4	Bolt, 1/4-20 X 1" HH GR5 ZP
20	62187	04003-806-05	4	Nut, 1/4-20 Serrated Flange ZP
21	20049	04003-003-03	1	Bolt, 3/8-16 X 1" HH GR5 ZP
22	61179	04146-005-00	1	Solenoid, Grounded
23	62046	04638-039-04	2	16-14 Ga. 5/16" Ring Terminal
24	62188	04638-043-02	2	16-14 Ga. Butt Connectors
25	62620	00117-308-01	1	Weldment, Feedgate
26	62621	00117-309-01	1	Handle, Feedgate
27	61231	04010-002-02	2	Pin, 3/32" x 1" Cotter, SS
28	20354	04004-002-09	2	Flatwasher, 7/16" U.S.S. ZP
29	61169	04624-001-01	1	Hand Knob
30	20355	04004-002-10	1	Flatwasher, 1/2" U.S.S. ZP
31	62622	04043-054-00	1	Weldment, Drag Chain, 5 Ft.
	62623	04043-054-01	1	Weldment, Drag Chain, 6 Ft.
	62624	04043-054-02	1	Weldment, Drag Chain, 7 Ft.
32	62625	04043-036-00	2	Pin, Connector
33	62626	04043-037-00	2	Pin, Cotter
34	62208	04145-063-00	1	Engine, 10.5 HP I/C
35	62627	04003-032-08	2	Bolt, 5/16-18 x 1 1/2" Car. GR5 ZP
36	62628	04003-804-01	4	Locknut, 5/16-18 Nylon Insert ZP
37	62629	00117-310-01	1	Weldment, Belt Tension
38	62630	04003-032-09	2	Bolt, 5/16-18 X 1 3/4" Car. GR5 ZP
39	62631	04003-003-62	1	Bolt, 3/8-16 X 3 1/2" HH GR5 ZP
40	62397	04031-007-00	1	Key, 1/4" Sq. X 1"
41	61177	04070-021-00	1	Pulley, Driver
42	61162	04071-016-00	1	V-Belt
43	62632	04110-006-03	1	Elbow 3/8" 90 Degree Street
44	62633	04120-078-01	1	Hose, 3/8" x 13" (1) Wire
45	62634	04003-081-04	3	Screw. 5/16-18 X 3/4 Soc. Cap
46	61213	04616-067-02	1	Cable, Starter
47	62106	04067-033-00	3	Boot, Alternator Cable
48	62635	04616-067-05	1	Cable, Starter
50	62636	00117-312-01	1	Weldment, Shroud

# PARTS LIST FOR LPV ENGINE DRIVEN HOPPER ASSEMBLIES

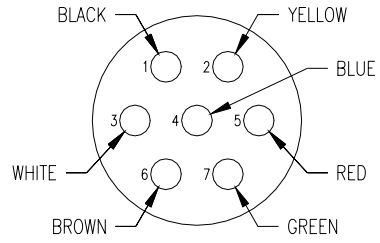
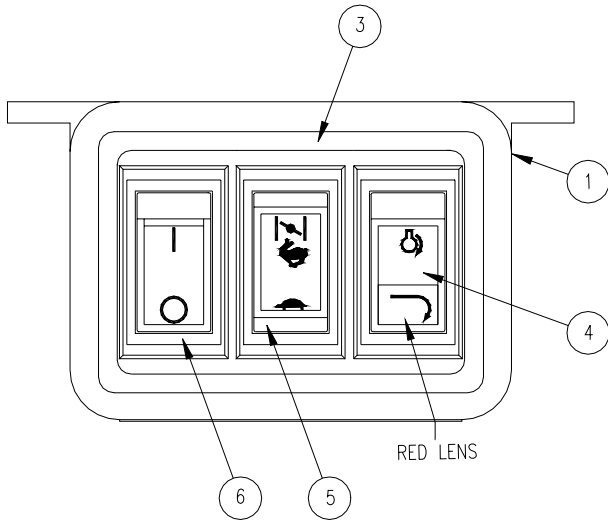
(Carbon Steel) Continued

ITEM	PART NUMBER		QTY.	DESCRIPTION
51	62637	04003-003-51	1	Bolt, 3/8-16 x 1 1/4" HH SS
52	62638	04003-804-08	1	Locknut, 3/8-16 Nylon Insert, SS
55	62639	00117-313-01	1	Cover, Front
56	62640	04003-032-06	14/18	Bolt, 5/16-18 X 3/4" Car. SS
57	62641	04003-806-13	14/18	Nut, 5/16-18 Ser. Flange SS
58	62008	04049-214-00	1	Decal, Serial (w/Pat. Nos.)
59	62007	04049-045-00	1	Decal, Caution
60	62009	04049-182-00	2	Decal, Danger (Conveyor)
61	62642	04049-367-00	3	Decal, Meyer/Diamond Snow/Ice
62	62643	04049-362-00	1	Decal. Fuel Shut-Off
63	62644	04049-357-00	1	Decal Engine Warranty
64	62645	00117-257-00	1	Bracket, Actuator, Briggs & Stratton
65	62646	04003-127-01	2	Screw, #10-32 PPH Machine
66	62647	04150-043-00	1	Assembly, Actuator
67	62648	00117-256-00	1	Linkage, Throttle
68	62649	04003-069-01	3	Screw, #8-32 X 3/4" Phillips Rd. SS
69	62650	04003-804-28	3	Locknut, #8-32 Nylon Insert SS
70	62651	04004-002-59	3	Flatwasher, #8, SS
71		04540-003-00	.250	Engine Oil 5W30
72	62652	04607-027-00	1	Clamp, Cushioned 1/2" SS
73	62653	00115-655-00	1	Cable, 8 Pin (Rear Half)
75	62654	00117-342-00	1	Shipping Carton
76	62655	00117-339-01	1	Assembly, Spinner, w/o Baffles
77	62656	04093-021-00	1 Ft.	Trim, Vinyl
78	N/A	XXXX-XXX-XX	-	
79	62657	04003-033-14	4	Bolt, 3/8-16 X 4" Car. GR2
80	20353	04004-002-08	4	Flatwasher, 3/8" U.S.S. ZP
81	62658	04616-097-01	1	Cable, Ground, Black, 6 Ga., 17"
82	62659	00117-351-01	2	Chainguard, 5'
	62660	00117-351-02	2	Chainguard, 6'
	62661	00117-351-03	2	Chainguard, 7'
83	62662	00117-352-01	2	Shield, Sprocket
84	62663	00117-361-03	1	Screen, 5', 3" Mesh, 1/4" Wire (5 Ft. Unit)
	62664	00117-361-01	2	Screen, 3', 3" Mesh, 1/4" Wire (6 Ft. Unit)
	62665	00117-361-02	1	Screen, 4', 3" Mesh, 1/4" Wire (7 Ft. Unit)
85	61182	00104-810-00	1	Weld, Baffle, R.H.
86	61181	00104-811-00	1	Weld, Baffle, L.H.
87	61183	00104-835-00	1	Weld, Baffle, Rear
88	62666	04093-031-00	1	Trim, Seal 24"
89	62667	04002-066-05	4	Screw, 1/4-20 X 3/4" HWH TEKS/3SS

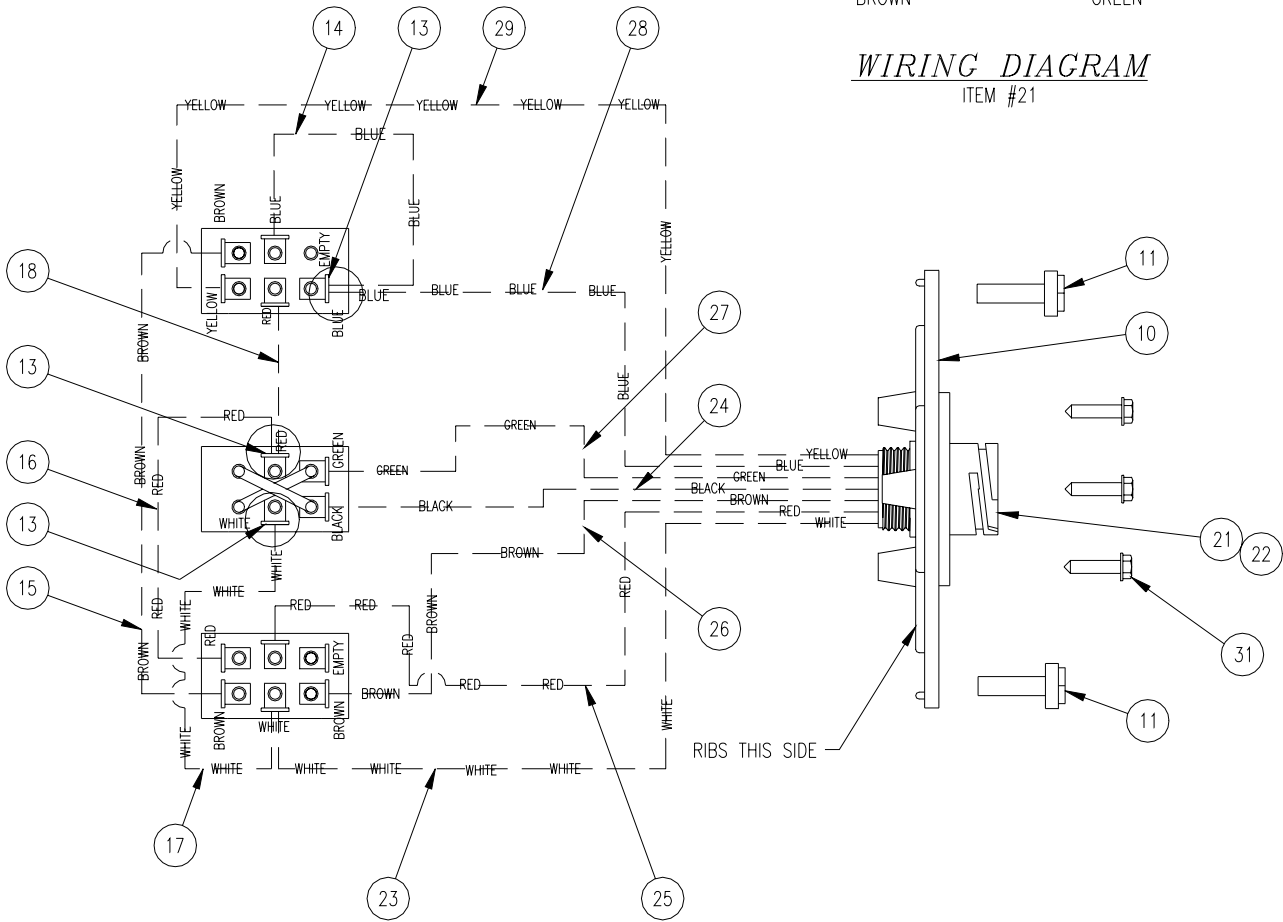


## PARTS LIST FOR BATTERY HOLD DOWN

ITEM	PART NUMBER		QTY.	DESCRIPTION
1	62668	04604-022-00	1	Cross Bar Hold Down
2	62669	04604-023-00	1	J-Bolt Battery Hold Down



**WIRING DIAGRAM**  
ITEM #21



## PARTS LIST FOR CONTROL PANEL ASSEMBLY

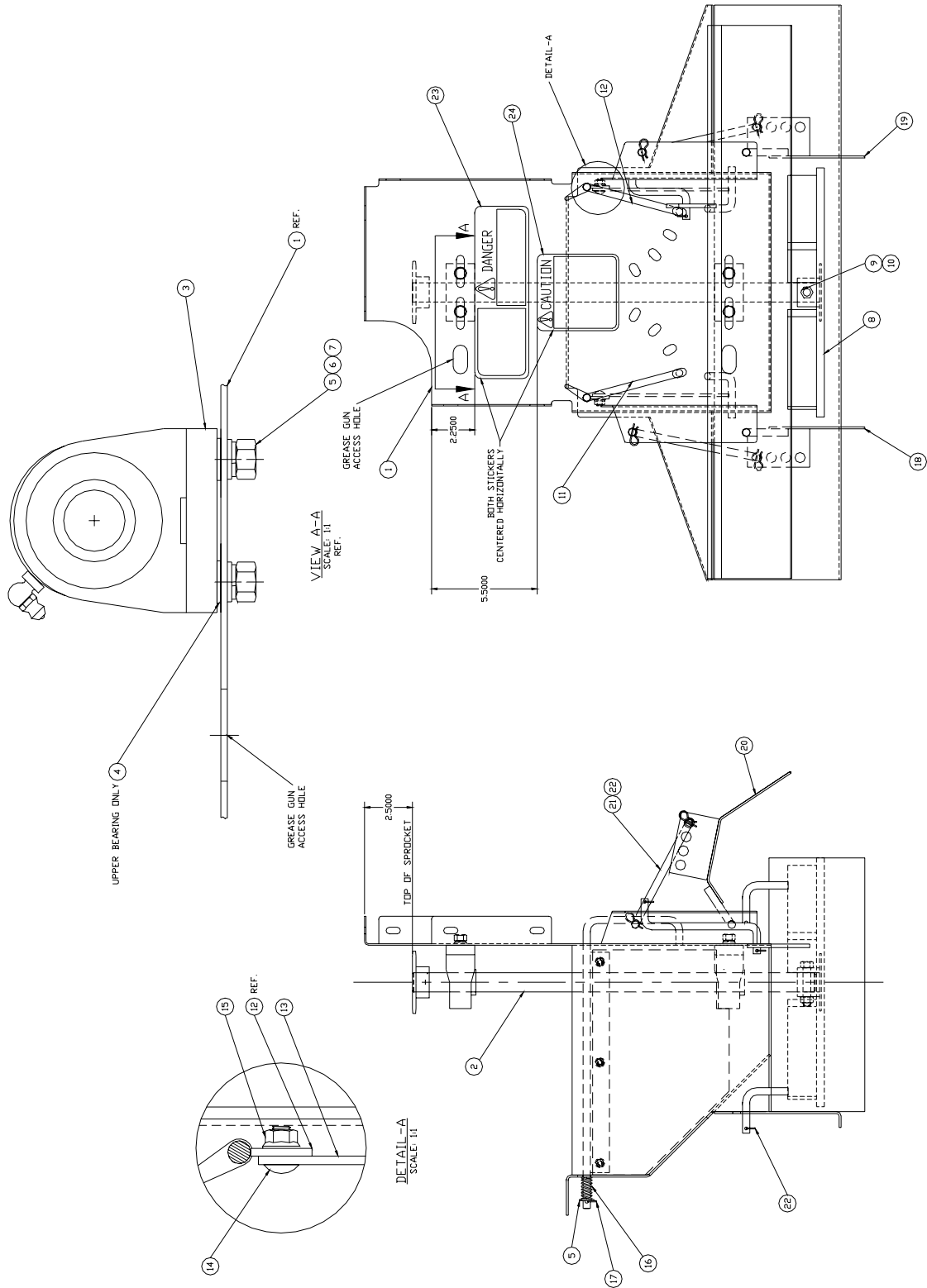
ITEM	PART NUMBER		QTY.	DESCRIPTION
	<b>62334</b>	<b>00115-662-00</b>	<b>1</b>	<b>CONTROL PANEL</b>
1	62150	04622-038-00	1	• Enclosure
2	62151	04640-026-00	2	• Panel, End
3	62152	04640-027-00	1	• Panel, Middle
4	62153	00114-161-00	1	• Switch, START/CONV
5	62154	00114-162-00	1	• Switch, Choke HI/LO
6	62155	00114-163-00	1	• Switch, ON/OFF
7	62156	04638-039-16	3	• Conn., double M/FM
10	62158	04638-039-16	1	• Enclosure, Back Panel
11	62159		4	• Screw, #8 x 1/2 SM SLT HWH ZP
14	62161		1	• Jump Wire, 14 Ga., BLUE 3"
15	62162		1	• Jump Wire, 14 Ga., BROWN 5.5"
16	62163		1	• Jump Wire, 14 Ga., RED 4"
17	62164		1	• Jump Wire, 14 GA., BROWN 3"
18	62165		1	• Jump Wire, 14 Ga., RED 3"
21	62671	04638-102-00	1	• Receptical, Sq. Flange
22	62672	04638-105-00	7	• Connector, Socket, 14 Ga., Tin
23	62673	04616-016-00	.333 Ft.	• Wire, 14 Ga., White Insulated
24	62674	04616-037-00	.333 Ft.	• Wire, 14 Ga., Black Insulated
25	62675	04616-039-00	.333 Ft.	• Wire, 14 Ga., Red Insulated
26	62676	04616-022-00	.333 Ft.	• Wire, 14 Ga., Brown Insulated
27	62677	04616-040-00	.333 Ft.	• Wire, 14 Ga., Green Insulated
28	62678	04616-021-00	.333 Ft.	• Wire, 14 Ga., Blue Insulated
29	62679	04616-038-00	.333 Ft.	• Wire, 14 Ga., Yellow Insulated
30	62680	04638-045-06	7	• Terminal Insulated Disc. Female
31	62177		4	• Screw, #4-40 x 1/2 Slit Rd HD
<b><u>32</u></b>	<b><u>62178</u></b>		<b><u>4</u></b>	<b><u>• Nut, #4-40 Hex ZP</u></b>
<b><u>33</u></b>	<b><u>62179</u></b>		<b><u>4</u></b>	<b><u>• Lockwasher, #4 Med Split ZP</u></b>
	62519	NOT SHOWN:	1	• Cable, 7 Pin (Front Half)

Parts indented are included in the assembly under which they are indented.



# LPV SPINNER ASSEMBLY

62573 (00117-339-01)



## PARTS LIST FOR LPV SPINNER ASSEMBLY

ITEM	PART NUMBER		QTY.	DESCRIPTION
	<b>62573</b>	<b>00117-339-00</b>	<b>1</b>	<b>SPINNER ASSEMBLY COMPLETE</b>
1	62682	00117-316-01	1	• Weldment, Spinner Body
2	62683	00117-317-00	1	• Assembly, Spinner Shaft
3	62684	00117-314-03	2	• Block, Spacer, Bearing
4	62685	04004-004-02	2	• Lockwasher, 3/8" Int./Ext. TH, SS
5	20050	04003-003-04	4	• Bolt, 3/8-16 X 1 1/4 HH GR 5 ZP
6	20353	04004-002-08	6	• Flatwasher, 3/8" U.S.S. ZP
7	20329	04004-001-07	4	• Lockwasher, 3/8" Med Split ZP
8	62205	04622-033-00	1	• Disc, Poly Spinner
9	62686	04003-003-06	1	• Bolt, 3/8 -16 X 2" HH GR. 5 ZP
10	62687	04003-807-09	1	• Locknut, 3/8-16 Cen. Lock ZP
11	62333	00115-580-01	1	• Weldment, Handle L.H.
12	62331	00115-545-01	1	• Weldment, Handle R.H.
13	62688	00117-315-01	2	• Plate, Baffle
14	62689	04003-031-07	6	• Bolt, 1/4-20 X 5/8" Car. SS
15	62690	04003-806-15	6	• Nut, 1/4-20 Serrated Flange, SS
16	62358	04091-028-00	2	• Spring, Compression
17	62691	04010-016-01	2	• Pin, 1/8" X 1" Cotter SS
18	61181	00104-811-00	1	• Weld, Baffle, L.H.
19	61182	00104-810-00	1	• Weld, Baffle, R.H.
20	61183	00104-835-00	1	• Weld, Baffle, Rear
21	62313	00115-150-00	3	• Bar, Link, S3
22	61232	04011-001-01	12	• Keeper, Hairpin Small
23	62006	04049-044-00	1	• Decal, Danger Spinner
24	62007	04049-045-00	1	• Decal, Caution

Parts indented are included in the assembly under which they are indented.

## NAME PLATE INFORMATION

- When ordering parts or requesting information or assistance, always include the information listed below.
- The Model Number and Serial Number for the Spreader are shown on the Name Plate.
- The space below is provided as a convenient place to record these numbers; just fill in the blanks.

Model No. \_\_\_\_\_

Serial No. \_\_\_\_\_

Date Purchased \_\_\_\_\_

Purchased From \_\_\_\_\_

Phone No. For Service \_\_\_\_\_

**CALL YOUR AUTHORIZED MEYER OR DIAMOND DISTRIBUTOR  
FOR PARTS AND SERVICE**

**MEYER PRODUCTS (216) 486-1313  
FAX (216) 486-1321  
email: [info@meyerproducts.com](mailto:info@meyerproducts.com)**

**DIAMOND EQUIPMENT (207) 563-2226  
FAX (207) 563-2229  
email: [info@diamondplows.com](mailto:info@diamondplows.com)**

ONE YEAR WARRANTY

Meyer Products promises to the consumer to repair or, at Meyer Products' option, to replace any part of this Meyer Spreader except expendable parts such as pins, spreader fins, and other normal wear items, which proves to be defective in workmanship or material under normal use for a period of one year from the date of delivery to the original purchaser. During this one year, Meyer Products will provide, to the consumer, through its Distributor / Sub-Distributor network, all parts necessary to correct such defects free of charge. Labor costs incurred for any repairs on this piece of equipment will be the responsibility of the consumer. Faulty parts will be repaired or replaced by the Distributor / Sub-Distributor where that particular piece of equipment was purchased. Any cost incurred in returning the product to the Distributor / Sub-Distributor is the responsibility of the consumer.

The gasoline engine used in this product is covered by its own warranty as provided by the engine manufacturer. A copy of this warranty is included with the engine.

EXCLUSIONS

IN NO EVENT SHALL MEYER PRODUCTS BE LIABLE FOR SPECIAL, INCIDENTAL OR CONSEQUENTIAL DAMAGES OR FOR DAMAGES RESULTING FROM LACK OF NECESSARY MAINTENANCE, FROM MISUSE, ABUSE, ACTS OF GOD, ALTERATION OF THE MEYER PRODUCT, OR FROM USE OF PARTS OR HYDRAULIC FLUID NOT SUPPLIED BY MEYER PRODUCTS. USE OF THE MEYER SNOWPLOW FOR ANY PURPOSE OTHER THAN PLOWING SNOW IS ONE EXAMPLE OF AN ABUSE AND MISUSE OF THE PRODUCT.

WARRANTY SERVICE

In order to obtain service under this warranty, the consumer must return this Meyer product to the Distributor / Sub-Distributor from whom the product was purchased or to any other Meyer Products Distributor / Sub-Distributor, transportation and freight charges prepaid. Only Meyer Products Distributor / Sub-Distributors are authorized to perform the obligations under these warranties. For the address and telephone number of the Distributor / Sub-Distributor nearest you, check the telephone directory or you may write to the warrantor at the address below.

GENERAL

It is the responsibility of the consumer to establish the warranty period by verifying the original delivery date. A bill of sale, cancelled check or some other appropriate payment record may be kept for that purpose. It is recommended, but not required, that the consumer verify the original delivery date by immediately returning the attached Warranty Registration Card. No person is authorized to change this warranty or to create any warranty other than that set forth herein. This warranty gives you specific legal rights and you may also have other rights which vary from state to state.

Meyer Products  
18513 Euclid Avenue  
Cleveland, Ohio 44112  
Phone (216) 486-1313  
Fax (216) 486-3073  
E-Mail info@meyerproducts.com

Diamond Equipment  
6 Angell Lane  
Damariscotta, Maine 04543-9801  
Phone (207) 563-2226  
Fax (207) 563-2229  
E-Mail info@diamondplows.com

In order to validate this warranty, please complete this card and mail it.

Name: \_\_\_\_\_

Address: \_\_\_\_\_

\_\_\_\_\_

Spreader Model: \_\_\_\_\_ Serial No.: \_\_\_\_\_

Installation Date: \_\_\_\_\_ Purchased From: \_\_\_\_\_

**Meyer**  
**HOPPER SPREADERS**  
**Diamond**



Diamond Equipment  
 6 Angell Lane  
 Damariscotta, Maine 04543-9801  
 Phone (207) 563-2226  
 Fax (207) 563-2229  
 E-Mail info@diamondplows.com

Meyer Products  
 18513 Euclid Avenue  
 Cleveland, Ohio 44112  
 Phone (216) 486-1313  
 Fax (216) 486-3073  
 E-Mail  
 info@meyerproducts.com

PART NO.	CAPACITY	LENGTH	WEIGHT (EMPTY)
62567 (STEEL)	.56 CU. YD.	5 FT.	537 LBS.
62577 (STEEL)	.68 CU. YD.	6 FT.	578 LBS.
62578 (STEEL)	.80 CU. YD.	7 FT.	XXX LBS.
62573 (STEEL)	SPINNER ASSEMBLY		

Postage  
 Required

**Meyer Products**  
 18513 Euclid Avenue  
 Cleveland, Ohio 44112-1084