

Service manual



ORIGINAL GRINDER

Your local Dealer

.....
.....

S / EN
Rev. 120323

1.	Contents	2
2.	Introduction	3
3.	Warnings and regulations	3-4
4.	Basic rules	4
5.	Technical data	4
6.	Overview of grinder	5
7.	Installation and start-up	6-7
8.	Adjust coffee amount	8
9.	Grinder care	8
10.	Cleaning with GRINDZ cleansing agent (once a month)	9
11.	Maintenance and care of grinder	10 - 5
12.	Dimension sketch	16
13.	Spare part list	17-18
14.	Exploded view	19-20

Original Grinder

Congratulations on choosing an Original coffee grinder.

The Original coffee grinder fits all Crem International AB's 1.8 litre pots and 2.2 - 2.5 litre thermos brewers.

Crem International AB is certified in accordance with ISO 9001 and ISO 14001, ensuring that its products have the lowest possible environmental impact.

Warnings and safety regulations:

Read this manual before using the coffee grinder for the first time.

Only qualified personnel should install the machine.

Check that all parts are free of defects. If they are not, stop installation and contact your dealer.

Keep this manual in a safe place.

-Check that the voltage in the power outlet matches the information on the grinder's label.

The grinder is designed exclusively for grinding roasted coffee beans.

The grinder should only be used for its intended use, that is, grinding roasted coffee beans. All other uses are considered unsuitable and therefore dangerous.

The manufacturer cannot be held liable for any damage caused by unsuitable, improper or unreasonable use.

Nor is the manufacturer liable for personal injuries or damages caused by the machine when is used in a way other than the manner described in the manual. Likewise, the manufacturer cannot be held liable if maintenance or safety regulations are neglected.

The warranty will become void if the machine is used in a way other than the manner described in the manual.

The machine may only be operated by an adult.

- The user must be an adult. The grinder may not be used by children or other unsuitable individuals.
- The user must observe the safety regulations applicable in the user's country. He/she must also use common sense.
- The user, installer or service technician must inform the manufacturer of any defects or wear that may jeopardise the machine's original safety.
- The installer must check the conditions at the place of use, to ensure hygienic and safe use for the user and customers.
- The manufacturer is responsible for the machine components, and the buyer for ensuring that trained personnel use the grinder.

The manufacturer has taken every possible measure to guarantee the user's safety, but variable installation or transport conditions may cause unpredictable and uncontrollable situations. Therefore, it is important to try to avoid any hidden dangers, in particular the following:

- The packaging material can cause cuts and other injuries if handled carelessly. Do not allow children or inappropriate individuals to handle the material.
- Any errors or defects must be reported immediately to an authorised installer or technician.
- Only authorised personnel may repair the grinder.

4. Basic rules.

Original Grinder

- Do not pull on the power cord or machine to pull the plug from the wall outlet.
- Do not allow children or inappropriate individuals to use the grinder.
- Disconnect from power source before cleaning or other maintenance.
- Switch off the grinder in case of error or poor function. Contact an authorised service technician and ask that only original spare parts be used. Failure to do so may make the damage worse.
- Do not leave the grinder connected to a power source when it is not necessary. Unplug the device when it is not in use.
- Make sure that the ventilation slots on the grinder are not blocked and that water or other liquids cannot get inside.
- If the power cord is damaged, have it replaced immediately.

Warning! - when the machine is operating.

Never put a spoon, fork or other item in the grinder when it is in use.

Never immerse the motor or any other part of the grinder in water.

5. Technical data.

Original Grinder

Dimensions:

Height: 570 mm

Width: 215 mm

Depth: 390 mm

Weight: 12 Kg

Bean container capacity: 2.5 Kg. coffee beans

Electrical Specifications: 230V/60Hz

Power: 450 W



7.1. Installation of grinder.

Place the grinder on a flat, waterproof surface.

**7.2. Electrical connection of grinder.**

Connect the grinder to an earthed **230V10A** wall outlet.

Warning! The machine must be connected to an earthed power outlet.

Always observe the rules in effect in the user's country.

- Use of extension cord or other forms of loose connections is not advisable.

The grinder is often used in rooms where there is water and humidity, and therefore it must be properly insulated.

7.3. Fill the grinder with coffee beans.

7.3.1. Lift the bean container's lid (A), and fill with freshly roasted coffee beans.

7.3.2. Use only coffee beans without additives like fragrance oils and sugar.

A



7.4. Start the grinder.

7.4.1. Turn on the grinder by pressing the ON/OFF button (B).

7.4.2. The display (C) shows the current coffee portion setting.

7.4.3. You can select preset coffee portions by pressing on the buttons (D) or (E).

(See the recommendations in chap. 7.5. Coffee portions).

7.4.4. Insert a filter in the filter holder and place the filter holder under the coffee dispenser. Use only Crem International AB-recommended paper filters. For 90 mm filter holders, filter 110100 when ordering, and 110 mm filter holders, filter 110110 when ordering.

7.4.5. BEGIN the grinding by pressing button (G).

**7.5. Coffee portions: (Default settings)**

Recommended portions for Crem International AB coffee machines, Original and Cater.

Important! To prevent brewing problems, never exceed 150 grams.

The display shows:	4	=	35 grams
	6	=	55 grams
	8	=	75 grams
	10	=	95 grams
	12	=	115 grams
	14	=	130 grams



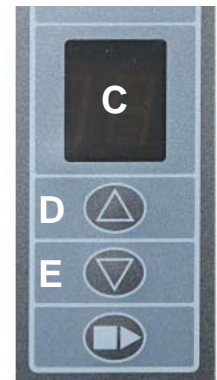
Note: Coffee portions 4 - 12 for 1.8 litre pots/thermoses.
Coffee portions 12 - 14 for 2.2 litre and 2.5 litre thermoses.

8. Adjust coffee amount.

Original Grinder

8. Adjust coffee amount.

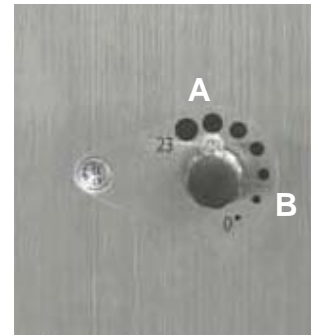
- 8.1. Press buttons (D) and (E) simultaneously for 6 seconds.
- 8.2. The display (C) shows the current time setting for grinding.
- 8.3. You can now choose to increase or decrease the time 15 = 1.5 seconds for grinding, by pressing the buttons (D) or (E). This means that you increase or decrease the amount of coffee grounds.



8.4. Adjusting coffee grind.

Preset grinding of coffee is 10.

Push the knob and turn counterclockwise (A) for coarser grind or clockwise (B) for finer grinding.



9. Grinder care.

Original Grinder

- 9.1. **External cleaning of grinder.**
To clean the exterior of the machine, use a soft rag and liquid detergent that is non-abrasive.
- 9.2. **Cleaning the bean container.**
Make sure that the bean container is completely empty.
Clean with a dry non-abrasive cloth.



Cleaning with GRINDZ™ cleansing agent

We recommend that you clean your espresso grinder once a month using our GRINDZ™ cleansing agent.

10. Cleaning with GRINDZ cleansing agent Ordering: Item number **E1001001**

- 10.1.** Run the grinder empty of beans.
- 10.2.** Pour the recommended dose of GRINDZ (35-40g) into the cap and pour it in the empty bean container.
- 10.3.** Start cleaning by pressing button (G) (see photo).
- 10.4.** When the cleaning process has finished, we recommend running the machine with a dose of coffee beans, to clean the coffee dispenser until there is no longer any trace of cleansing agent.



1. Safety.

Please read and observe the following service instructions carefully. Non-observance can result in damage to the grinder as well as in healththreatening risks for the user.

2. Safety instructions.

- The grinder is only allowed to be used to grind whole coffee beans. Ground coffee is never allowed to be filled into the input-shaft.
- Do not carry out any modifications or changes on the grinder. In case for non-observance, the manufacturer shall be liable for resulting damain no case whatsoever.
- Never put your fingers or objects into the rotating grinding mechanism inside the input-shaft.
- The grinder must not be operated when turning parts are accessible!
- Make sure, that the power cannot be turned on when working on the built-in grinder!
- In order to avoid damages, do not use power tools or cordless electric screwdrivers for any work on the grinder.
- Do not leave the grinder connected to a power source when it is not necessary. Unplug the device when it is not in use.
- The grinder is designed exclusively for grinding roasted coffee beans. The grinder should only be used for its intended use, that is, grinding roasted coffee beans. All other uses are considered unsuitable and therefore dangerous.
- The manufacturer cannot be held liable for any damage caused by unsuitable, improper or unreasonable use.
- All installations shall been done by an qualifi ed personnel.
- Disconnect from power source before cleaning or other maintenance.

3. Periodic maintenance.

- Clean silicon outlet, grinding house and grinding discs.
- Cleaning of grinder using GRINDZ cleaning tablets.
- In case of blockage: cleaning, if necessary detaching of rotating carrier.
- The grinder housing and spout should be inspected for coffee residues and obvious damages. In case of too much coffee residues around the spout, check if the silicone flapper inside the spout is in place.

4. Dismantling of the grinder:**Do as follows:**

- 4.1.** Run the grinder empty from beans.

Note! Disconnect from power source before dismantling the grinder.

- 4.2.** Loosen upper plate, (4 pcs screws), fig. A.
4.3. Loosen bean container lid, (2 pcs allen screws), fig. B.
4.4. Loosen the bean container (8 pcs screws), fig. C.

Fig. A.



Fig. B.



Fig. C.

- 4.5.** Remove bean container. Remove all coffee residues from the spout and the grinder housing by grinding through all coffee beans and using a vacuum cleaner to remove all residues.



4. Dismantling of the grinder: continued:

- 4.6.** Remove the adjusting knob by loosening the cover and nut (1), fig. D.
- 4.7.** Loosen adjusting knob holder (2) and screw (3), fig. E.
- 4.8.** Loosen the grinder power connector, fig. F.
- 4.9.** Disassemble the grinder by removing the outlet (5), screws (4) and nut, 2 pcs. fig. G.

Fig. D.



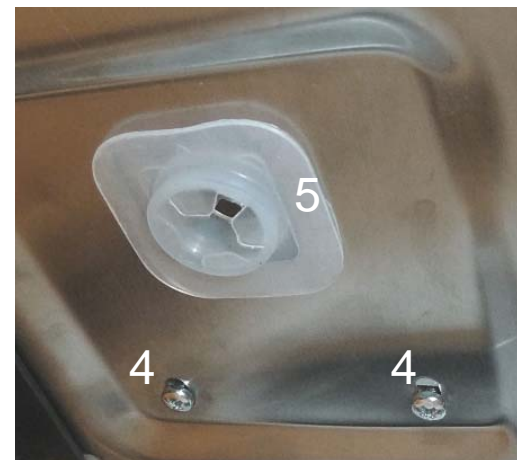
Fig. E.



Fig. F.



Fig. G.



- 4.10.** Lift out the grinder for the care, maintenance, replacement of the grinding discs.

5. Periodic maintenance.

Grinding house, outlet, and silicone disc.

Cleaning grinder house. Do as follows:

- 5.1. Remove the screws (A) in the grinder housing. Fig.1.
- 5.2. Carefully detach the grinding housing.

Note its position for correct reassembly.
Do not alter the adjustment of the grinding discs.



Fig.1.

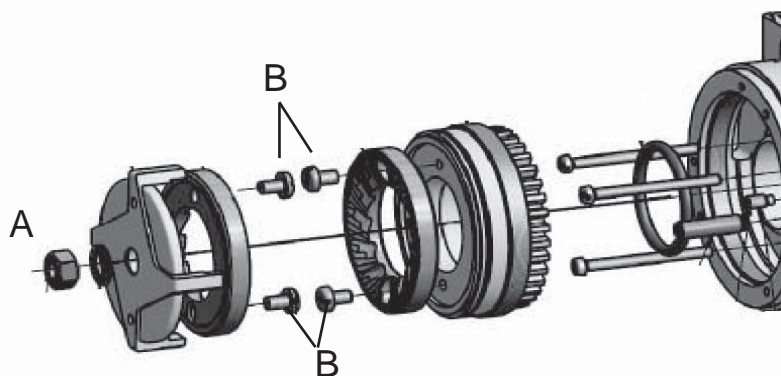
- 5.3. Clean the inside of the grinder housing and the outside of the disc carrier with a soft brush.
Check the correct position of the silicon flapper and the spout.
- 5.4. When reassembling the grinder housing, again check for the correct position and do not alter the grind adjustment of the discs. Fasten the three screws.

6. Removing the rotating carrier.

**After 50000 cups or 600 kg coffee beans the grinding discs should be exchanged to guarantee constant grinding capacity and accurate dosing.
Remove the grinder as chapter 4 describes.**

- 6.1. Remove the grinder casing and the rotating carrier.
Loosen the left threaded nut by turning it clockwise (A) fig. 2.
- 6.2. Remove the worn-out grinding discs by detaching the slotted screws. (B) fig. 2.

Fig. 2.



Removing the rotating carrier. (continued).

- 6.3. Clean the surfaces of the seats and the new discs.
In case of coffee residues left between disc carrier and new disc, the discs will not run parallel and the grinding performance will deteriorate.
- 6.4. Mount the new rotating grinding disc. NOTE! The grind adjustment has to be modified after changing the discs. **See chapter for basic adjustment.**
7. **Basic adjustment of the grinding finess.(trained personnel only)**
- 7.1. Press the adjustment screw while turning it clockwise until the milling blades touch. Check that they are touching by turning the container manually. The blades are touching when you hear a scratching sound.

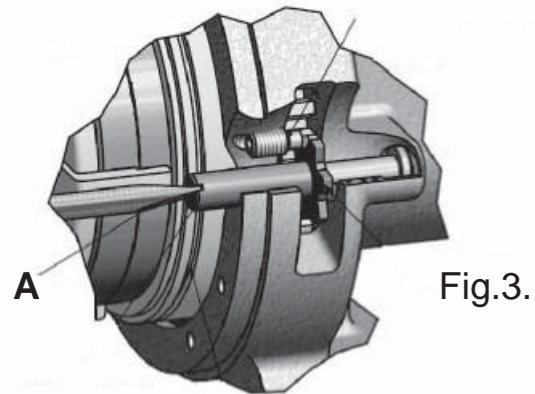


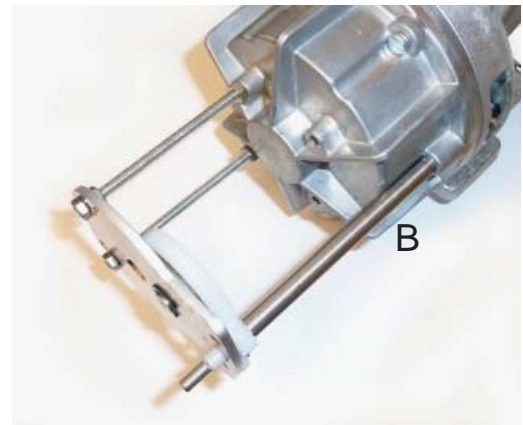
Fig.3.

- 7.2. Press and turn the adjustment screw counterclockwise 2 notches for the basic setting (A) fig. 3. (Ca 0,5mm)
- 7.3. Set the value to 0 as Fig.4 shows. Reassemble the grinder housing, again check for the correct position and do not alter the grind adjustment of the discs. Fasten the three screws.

Fig 4.



Fig 5.



Removing the rotating carrier. (continued).

- 7.4. Reassemble the grinder as Chapter 4 shows.
- 7.5. Set the value to 10 as fig.7 shows.

Fig. 6.



Fig. 7.



- 7.6. Press and simultaneously turn the adjustment knob anticlockwise for coarser coffee grounds.
- 7.7. Press and simultaneously turn the adjustment knob clockwise for finer coffee grounds.
- 7.8. After performing the grind adjustment, run 2 -3 cups of coffee through in order to achieve the current settings.

8. Exchange of the silicone flapper in the spout.

If the silicon flapper is damaged or out of place it has to be replaced respectively refitted to the housing.

Proceed as follows:

- 8.1 If possible: remove coffee residues (close bean container, grind empty, vacuum cleaner).
- 8.2 Loosen the set screw (A) at the front of the grinder housing. Fig.8.

Fig. 8.

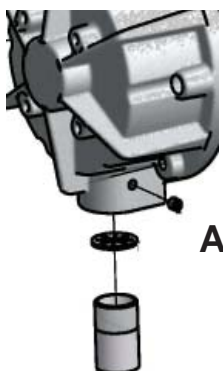
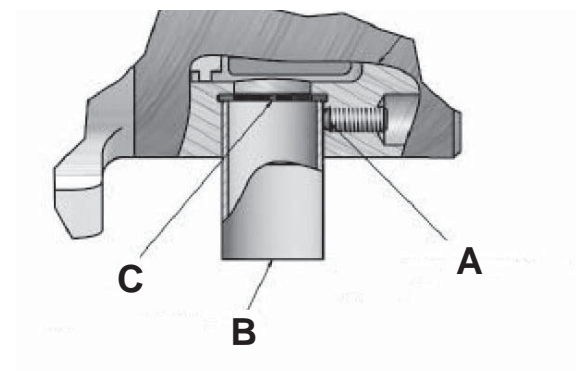
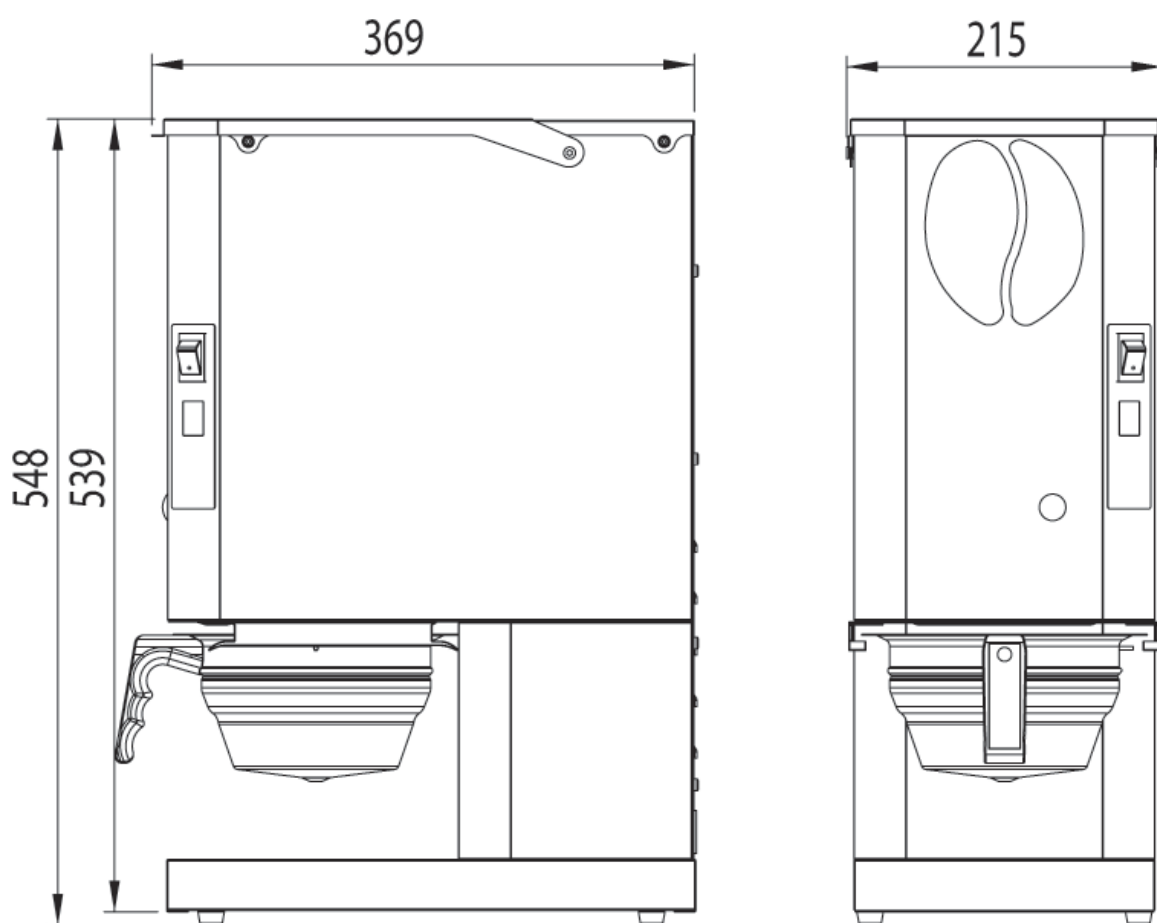


Fig. 9.

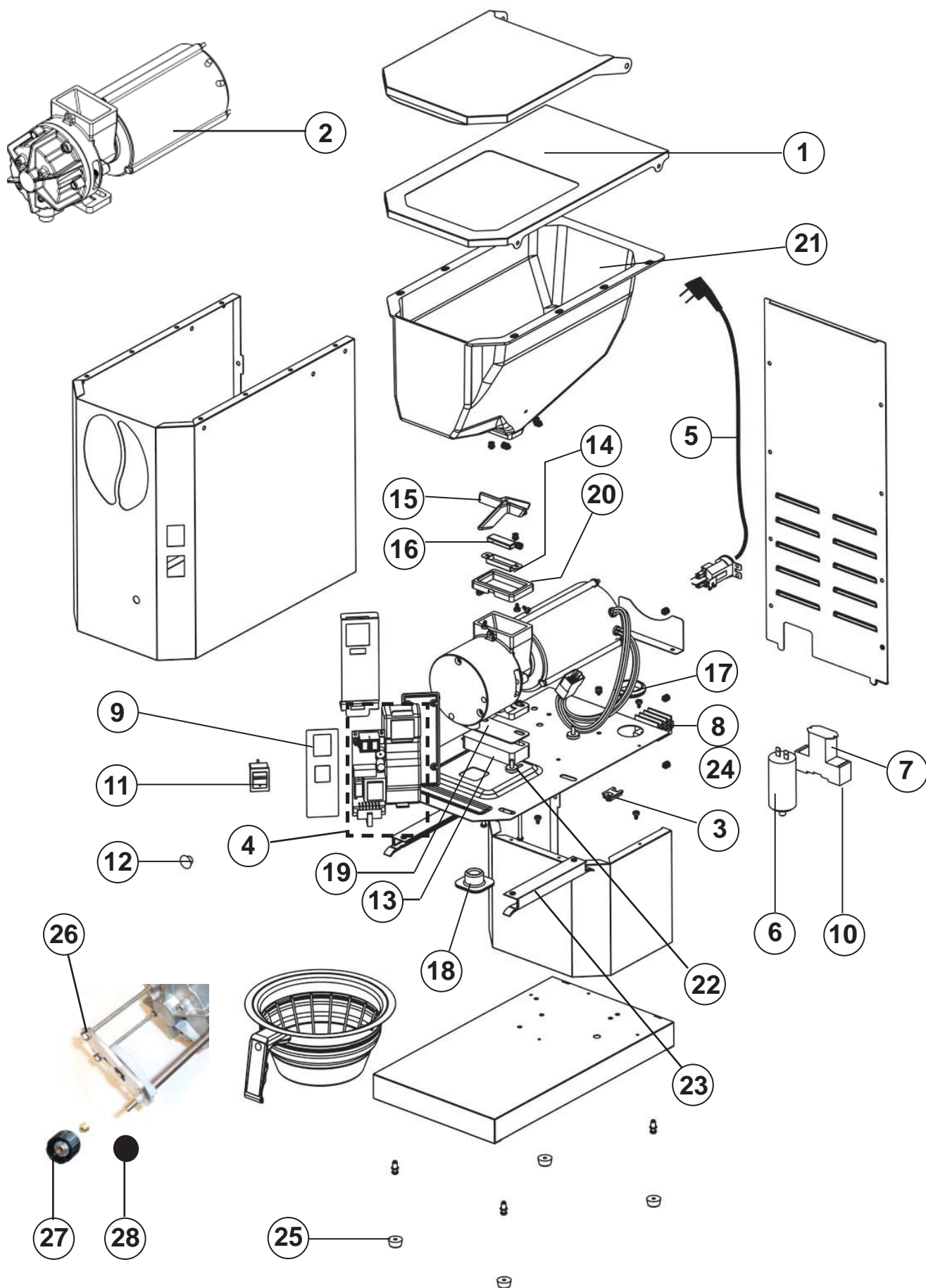


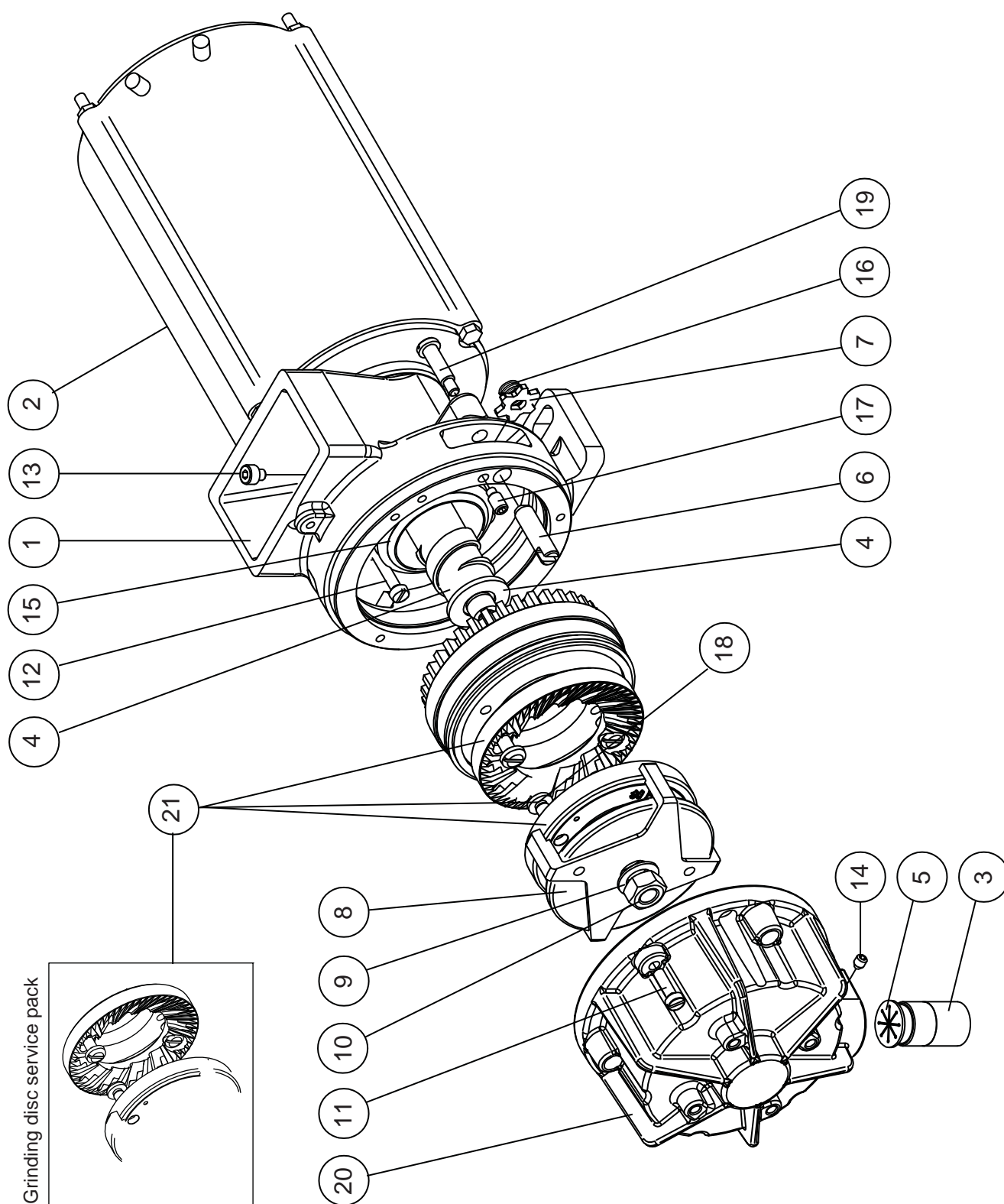
- 8.3 Carefully pull out the spout. (B). Fig.9.
- 8.4 Take out silicone flapper (C) which is placed in a groove inside the spout bore, put in the new silicone flapper.
- 8.5 Reassembling the spout (B) by bringing pressure on the spout and lock with set screw (A) to make sure that the silicone flapper (C) will be fixed correctly. Fig.9.



Description:	Article number.	Pos.no.	Amount/unit
Chassie	300039	1	1
Grinder	1604752	2	1
Socket to V7 Relay Grinder	160247	3	1
Electronic card PCB	1031647	4	1
Power Cable Fixed	160522	5	1
Capacitance	832392	6	1
Relay Grinder 230V	160245	7	1
Connector PA80	160351	8	1
Membrane switch	1603854	9	1
Socket to Relay 230V	160246	10	1
Rocket switch	1608017	11	1
Rubber Plug,10mm(Black)	1505076	12	1
Nylon Base	1264009	13	1
Metal Plate for Finger Protection 2333	1364002	14	1
Finger Protection	1364001	15	1
Magnetic Vitality	1608281	16	1
Rubber trp 40 TRP	1204651	17	1
Outlet Tube Sealing Silicon	1561003	18	1
Base Silicon Grinder Silicon	1561002	19	1
Sealing Rubber Silicon	1561004	20	1
Bean Hopper 2.2-2.5kg Acrylic	1105517	21	1
Nylon Bushing	1561005	22	1
Nylon Slide Guide Nylon	1264013	23	1
Gable for connector	160352	24	1
Feet	1203202	25	4
Adjusting Kit	710553	26	1
Knob 20 mm	1608131	27	1
Cap for knob	1608132	28	1

Description:	Article number.	Pos.no.	Amount/unit
Bean inlet housing CPL. EK21	83230939	1	
Motor 200-230V/50/60Hz	83230921	2	
Coffee outlet spout	83243642	3	
Conveying screw EK21	83230928	4	
Silicone flapper for grinder	83243641	5	
Adjustment shaft	83243677	6	
Adjustment pinion	83307991	7	
Grinding disc carrier	83230926	8	
Washer, 10x16x1	83251601	9	
Hexagon nut left-hand thread M8L A2	83251043	10	
Slotted head screw, M4x14	83250408	11	
Cylinder screw, M4x50	83250822	12	
Allen screw, M4x4	83250823	13	
Allen set screw, DIN916-M4x5	83250743	14	
O-Ring 35x4	83255509	15	
Pressure spring	83243678	16	
Allen set screw, DIN916-M5x10	83250742	17	
Pan head screw	83250614	18	
Slotted pan head screw, M4x16	83250821	19	
Grinder housing	83100914	20	
Grinding disc set EK21 (service pack)	83306715	21	





ORIGINAL GRINDER



FOR SERVICE

Your local Dealer

.....

.....

.....

CREM International AB
Box 10, Viksgränd 2, SE-670 40 Åmotfors, Sweden
Tel: +46 (0)570-477 00, Fax: +46 (0)570-47719
E-mail: info.se@creminternational.com www.creminternational.com

Item no. 1740036-01