



sewoo

SEWOO TECH CO.,LTD.

Doosung BD, 689-20, Geumjung-dong, Gunpo-si, Gyeonggi-do, 425-862 South Korea
TEL : +82-31-459-8200 FAX : +82-31-459-8880
www.miniprinter.com



MODEL : LK-P31

MOBILE PRINTER

Table of Contents

1. Unpacking	2
2. Product overview	3
3. Usage and Installation	4
3-1. Control panel usage	4
3-2. Battery Installation	5
3-3. Battery removal	6
3-4. Battery charging	7
3-5. Battery charger usage	8
3-6. Roll paper installation	9
3-7. Printer Case Usage	10
3-8. Self test	11
4. Peripherals connection	13
4-1. Bluetooth connection	13
4-2. Interface cable connection	14
5. Printer specification	15
5-1. Specification	15
6. Certification	17



Disposal of Old Electrical&Electronic Equipment(Applicable in the European Union and other European countries with separate collection systems)

This symbol on the product or on its packaging indicates that this product shall not be treated as household waste.

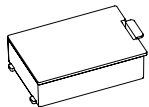
Instead it shall be handed over to the applicable collection point for the recycling of electrical and electronics equipment. For more detailed information about recycling of this product, please contact your local city office, your household waste disposal service or the shop where you purchased the product.

1. Unpacking

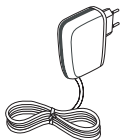
Standard



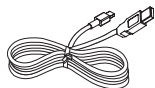
Printer



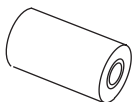
Battery



Charger



USB Cable Shielded



Roll paper



CD

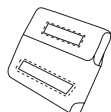


Quick Manual

Optional



Battery Holder (Cradle)



Case Usage

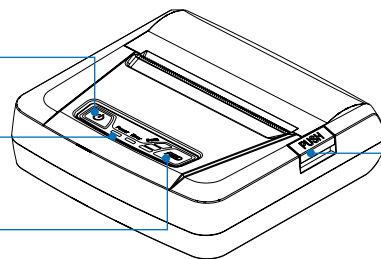
2. Product overview

Front

Power switch

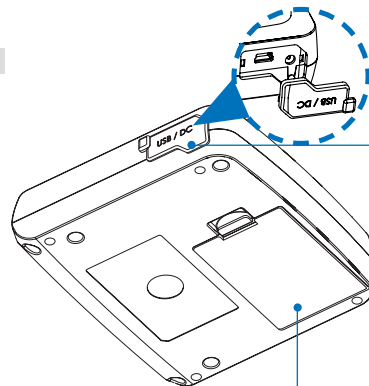
Control Panel

Paper feed button



Open Button

Rear

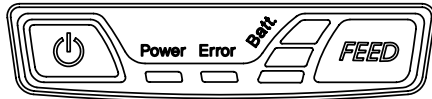






USB / DC JACK

Battery

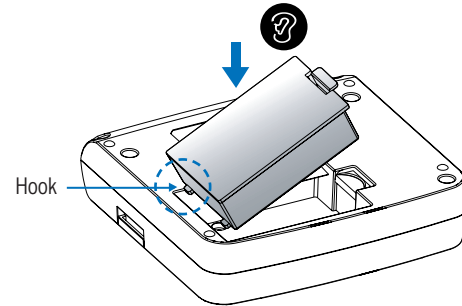
3. Usage and Installation

3-1 Control panel usage



Button	Name	function
	Power button	This button is used to turn the printer on and off. When the printer is off, press this button for approximately 3 seconds and it will turn on the power. When you press this button in a state that the printer is on, the printer will turn off.
	Paper Feed Button	Paper output can be done manually by pressing this button. Additionally, self-testing and Hexadecimal Dumping can be processed.. 1. Refer to "3-10" for self test information. 2. Refer to the service manual regarding Hexadecimal Dumping.
	Battery Status Lamp	1. If the Batt, LED are Lit, the battery is fully charged. 2. If you can hear beeping sound and LED light is turned off, it means that the battery is at the lowest level. 3. If the battery is not charged at all, the printer turns off automatically.
	Error Lamp	If the red light is turned on, it means there is no paper roll or the paper cover is open.

3-2 Battery Installation



1. Align battery hook as shown in the picture
2. Push the battery into the printer until it locks in place.

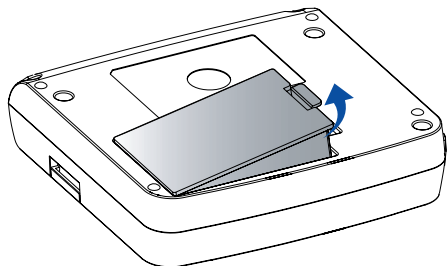
NOTE

As the battery is not charged at the time of your purchase, charge the battery prior to using the printer (Battery charger or Cradle can be used to charge)

CAUTION

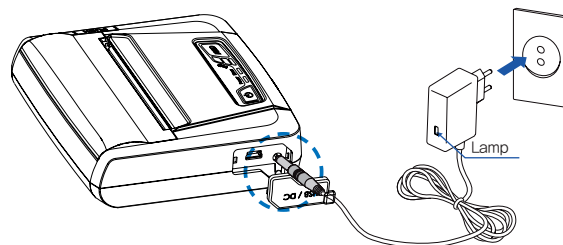
Risk of explosion if battery is replaced by an incorrect type.
Dispose of used batteries according to the instructions

3-3 Battery removal



After putting up the belt clip, remove the battery holding it up as shown above.

3-4 Battery charging



1. Be sure that the printer is turned off
2. After open the DC JACK cover, insert DC JACK into the printer.
3. Plug the power code to electrical outlet.

3-4-1 The status of lamp in charging

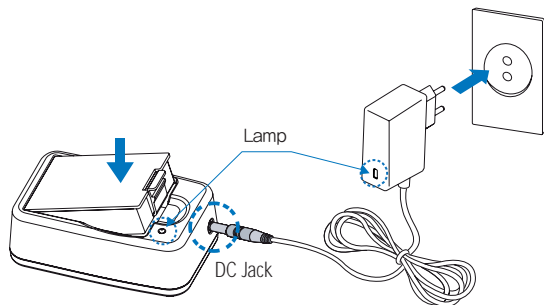
Status	charging	charging complete
Charging Lamp	Red	Green

NOTE

1. Unless the exclusive charger is used provided by the manufacturer, the printer can be damaged, and the manufacturer is not liable for the consequential damage.
2. Before removing the battery, make sure that power is turned off.
3. Printer does not work in the status of being connected with charger only.
4. The battery should be installed to operate printer.
5. While charging, do not turn on the power.
6. Do not operate the print while charging the battery.
7. Do not connect the charger while the printer is operated.

3-5 Battery charger usage

Optional



1. Insert the battery into the battery holder as shown above
2. Connect the DC JACK to the power electrical outlet.
3. Plug the power code into the electrical outlet.
4. Once the charging is completed, remove the battery from the holder.

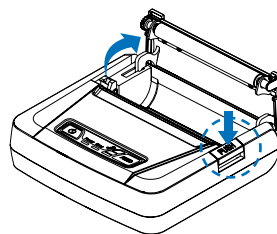
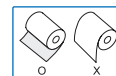
3-5-1 The status of lamp in charging

Status	charging	charging complete
Charging Lamp	Red	Green

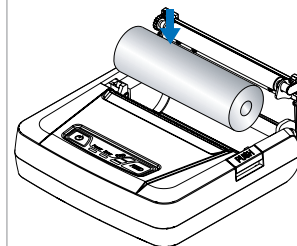
NOTE

In the case the battery is not fixed properly in the holder, the red lamp will be blinking. Then, extract and reinsert the battery.

3-6 Roll paper installation

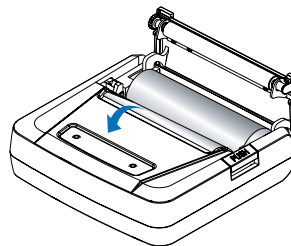


Press the PUSH button to open the paper cover

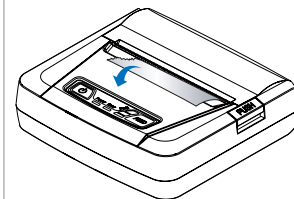


Insert the paper in the right direction

1
2
3
4



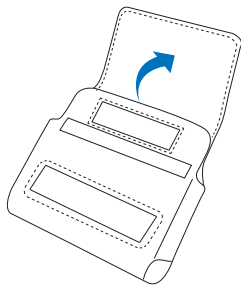
Pull a short length of paper out of the printer and close the cover.



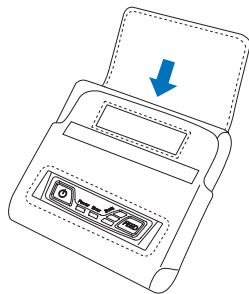
Tear off the additional paper using tear bar.

3-7 Printer Case Usage

Optional

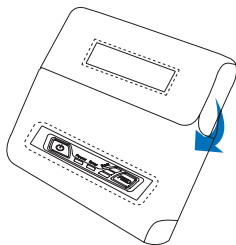


Open the Velcro.

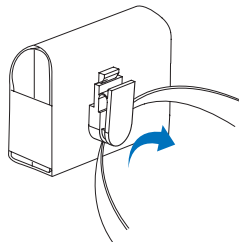


Put the printer into the case following the direction as shown in the picture.

1 2
3 4

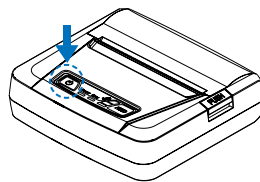


Close the Velcro.

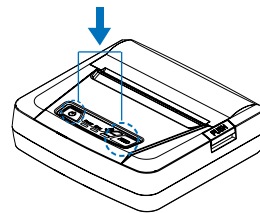


Fix this case to the belt with using the belt buckle.

3-8 Self Test



Turn off the power pressing the power button for approximately 3 seconds.

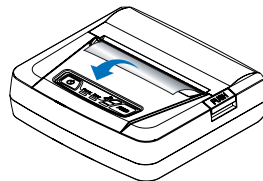


While you are pressing the FEED button, press the power button

1 2
3

NOTE

1. To print ASCII pattern additionally, press the Feed button once more
2. After printing ASCII pattern, the self test will be finished automatically.
3. If the Feed button is not pressed to print ASCII pattern, self test will be finished automatically after 30 seconds.



The printout is produced.

The sample of self test printout



When the printer is installed initially or when you face a problem, you can run the self test and check the information about

-Control Circuit, Mechanism, Print Quality, ROM Version

After checking with self-test and no issues are found, you can examine other devices and software. This function is working independent of devices and software.

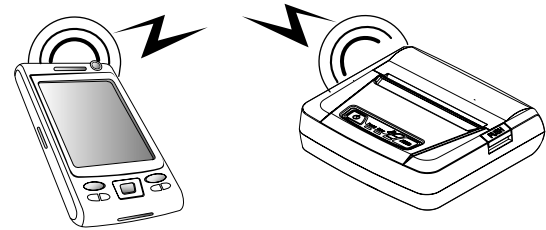
● Motor protection from being overheated

The motor should be stopped and cooled about more than 30 seconds after continuous printing 1.5 meter

4. Peripherals connection

This printer can communicate with Peripherals device via Bluetooth and cables.

4-1 Bluetooth Connection

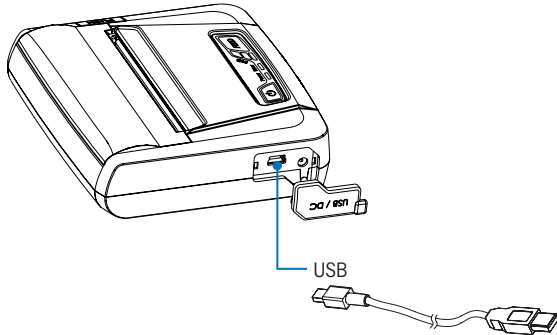


1. Printer can be connected to the PDA and PC which can do wireless communication.
2. By using Bluetooth function supported in PC, printer can be connected.

☑ NOTE

Refer to the Bluetooth Manual for more details on connection.

4-2 Interface Cable Connection



1. Connect USB into the cable connector on the printer.

NOTE

Use the cable offered by the manufacturer (USB)

2. Connect the interface cable into the USB port of the device (PDA, PC, etc.)

5. Pritner Specification

5-1 Specification

Printing Method	Direct Thermal	
Printing Speed	60mm/sec	
Resolution	203 DPI X 203 DPI	
Character	Font A (12X24), Font B (9X17)	
Character per line	Font A : 48pt , Font B : 64pt	
Character set	ALPHA NUMERIC Character, Extension Character	
Barcode	EAN-8, EAN-13, Code39, ITF, UPC-A,UPC-E, Codabar, Code93, Code128, PDF 417(2D), QR Code(2D)	
Emulation	ESC/POS Command compatible	
Driver	Windows printer driver(7, XP, 2000, 2003, VISTA, 32 & 64bit), Windows(CE 4.2 & 5.0 / Mobile 5.0-), Linux printer driver, Symbian, Blackberry, Android(2.1-)	
Sensor	Paper End Sensor , Cover Open Sensor , Black Mark Sensor	
Paper	paper type	Thermal Paper
	width	79.5mm+/-0.5mm
	thickness	Max.0.06mm ~0.09mm
	External Diameter	Max. ϕ 25mm+/-0.5mm
	Internal Diameter	8.5mm +/-0.5mm
Reliability	TPH	50km
	Battery	Continuous Printing 40~50min Standby: 10hours
Communications	USB, Bluetooth Class2	
Battery Charger	input	AC100~240V, 50/60Hz
	output	8.4V , 800~1400mA

Battery	Battery type	Li-ion
	output	7.4V, 1130mAh
	Charging time	2~3hours
Size	W X D X H(mm)	110 X 105 X 30
	W X D X H"	4.33 X 4.13 X 1.18
Weight		310g(with Battery)
Environmental sealing		IP42
Temperature	operation	-10 ~ 50°C
	storage	-20 ~ 60°C
Humidity	operation	35 ~ 95%
	storage	10 ~ 95%
BT	Frequency	2402 ~2480 MHz
	Number of Channels	79
	Channel Spacing	1 MHz
	Type of Modulation	GFSK (1Mbps)

6. Certification

FCC Information

This device complies with part 15 of the FCC Results. Operation is subject to the following two conditions:

- (1) This Device may not cause harmful interface, and
- (2) This device must accept any interference received, including interference that may cause undesired operation.

This Class [B] digital apparatus complies with Canadian ICES-003.
Cet appareil numérique de la classe [B] est conforme a la norme NMB-003 du Canada.

Operation is subject to the following two conditions: (1) this device may not cause harmful interference, and (2) this device must accept any interference received, including interference that may cause undesired operation of the device.

NOTE

This equipment has been tested and found to comply with the limits for CLASS B digital device, pursuant to Part 15 of FCC Rules. These limits are designed to provide reasonable protection against harmful interference when the equipment is operated in a commercial environment. This equipment generates, uses and can radiate radio frequency energy and, if not installed and used in accordance with the instructions, may cause harmful interference to radio communications. However, there is no guarantee that interference will not occur in a particular installation. If this equipment does cause harmful interference to radio or television reception, which can be determined by turning the equipment off and on, the user is encouraged to try correct the interference by one or more of the following measures:

- 1.1. Reorient or relocate the receiving antenna.
- 1.2. Increase the separation between the equipment and receiver.
- 1.3. Connect the equipment into an outlet on a circuit different from that to which receiver is connected.
- 1.4. Consult the dealer or experienced radio/TV technician for help.

WARNING

Changes or modifications not expressly approved by the manufacturer could void the user's authority to operate the equipment.